



**EUROPEAN NETWORK OF  
ECONOMIC POLICY RESEARCH INSTITUTES**

*WORKING PAPER NO. 18/MARCH 2003*

**CONVERGENCE IN SOCIAL PROTECTION  
ACROSS EU COUNTRIES, 1970-1999**

---

**SIMÓN SOSVILLA-RIVERO  
JOSÉ A. HERCE  
JUAN-JOSÉ DE LUCIO**

ISBN 92-9079-420-8

*AVAILABLE FOR FREE DOWNLOADING FROM THE ENEPRI WEBSITE ([HTTP://WWW.ENEPRI.ORG](http://www.enepri.org))*

© COPYRIGHT 2003, SIMÓN SOSVILLA-RIVERO, JOSÉ A. HERCE AND JUAN-JOSÉ DE LUCIO

# CONVERGENCE IN SOCIAL PROTECTION ACROSS EU COUNTRIES, 1970-1999

*ENEPRI WORKING PAPER No. 18*

SIMÓN SOSVILLA-RIVERO

JOSÉ A. HERCE

JUAN-JOSÉ DE LUCIO \* \*

---

## ABSTRACT

This paper examines the degree of convergence in social protection registered in the European Union during the 1970-99 period. To that end, we use Eurostat data and study the long-run properties of the data set using time series analysis. Our results indicate that there is no evidence of long-run convergence in Social Protection expenditure to GDP ratios. However, we do find evidence of catching-up with respect both to Germany and the EU average for all countries belonging to EU12, except for Greece.

JEL Codes: F42, H53, O52.

Key words: Social Protection Expenditure, Convergence, European Union.

---

---

\* Simón Sosvilla-Rivero is with FEDEA and Universidad Complutense de Madrid; José A. Herce is with FEDEA and Universidad Complutense de Madrid; and Juan-José de Lucio is at the Universidad de Alcalá de Henares.

The authors wish to thank Dieter Biehl for very useful comments and suggestions, Daniele Franco and Teresa Bento for providing them with part of the data set used in this paper, Pierre Perron for kindly making available the RATS programmes for unit root test with breaks and Javier Alonso for excellent research assistance.

# CONVERGENCE IN SOCIAL PROTECTION ACROSS EU COUNTRIES, 1970-1999

## *ENEPRI WORKING PAPER NO. 18*

SIMÓN SOSVILLA-RIVERO

JOSÉ A. HERCE

JUAN-JOSÉ DE LUCIO

---

### **I Introduction**

The issue of social policy coordination has regularly been present in the agenda of the European Union (EU), although it has never been granted the high profile that economic policy coordination has enjoyed. One powerful reason for such interest has been to ease higher labour mobility across countries, since the safety net system is considered to be an important disincentive to job mobility (see e.g. OECD, 1990). Also the idea of a social Europe has been present since the founding Treaties were signed. On the other hand, member states have always claimed that social policies that involve enormous economic resources are not to be harmonised given the present real economic differences among countries, leaving aside other arguments about the proper jurisdictional level from which to conduct social policy altogether.

Yet, beyond actual moves towards social policy coordination at a EU scale, every country looks, more or less informally, at each other as a reference. One could thus wonder whether, given global resources (for instance GDP), converging population structures, lifestyles or welfare programmes would progressively lead towards similar standards in benefits relative to those resources (i.e. the benefits-to-GDP ratio).

This paper examines the degree of convergence in social protection across the EU countries. To that end, we apply time-series unit root-based tests to Eurostat social protection data covering the 1970-99 period. The rest of the paper is organised as follows. In Section II we present the basic data and trends on social protection ratios and in Section III we outline the econometric methodology. Section IV reports the empirical results, while some concluding remarks are offered in Section V.

### **II Trends in social protection ratios across the EU**

Data on social protection for EU countries have been available from 1970 onwards through the ESSPROS system for most of the current EU-15 member states since the mid-1980s.<sup>1</sup> In this study we use data concerning the ratio of social protection expenditure to GDP for the EU-12 countries through the period 1970-99. Data for the period 1970-79 for Spain, Greece, Portugal and Italy were lacking in the ESSPROS data base and had to be derived from national figures on social transfers projecting backwards regression results between social transfers and social protection figures computed for the period 1980-99. This procedure allowed us to complete our data set for EU-12.

It can be seen in Figures 1.a and 1.b that social protection expenditures have followed similar patterns in every country with certain exceptions however. For most of the countries social expenditure has been growing even as a percentage of their GDP despite general stabilisation in the period from 1983 to 1989

---

<sup>1</sup> In the ESSPROS classification system, up to 8 different expenditure functions are included: Sickness/healthcare, Disability, Old age, Survivors, Family/children, Unemployment, Housing and Social exclusion. See Eurostat (1996) for further detail as for the precise definitions and Eurostat (2001) for complete data on expenditure and receipts.

and a marked decrease in many countries since around 1995. For the six member states out of EU-12 that had the highest expenditure ratios in 1999, there has been a narrowing of expenditure ratios around 28% of GDP in 1999 up from around 20% 30 years ago (Figure 1.a). In what concerns the six other countries with the lowest expenditure ratios, there has been some more variability across time but ratios in 1999 varied around 22% while, in 1970, they were located around 12% with a larger variation (Figure 1.b).

Figure 1.a. Social protection expenditure over GDP in EU-12 (in %) 1970-99  
Countries with high social protection ratios (as of 1999)

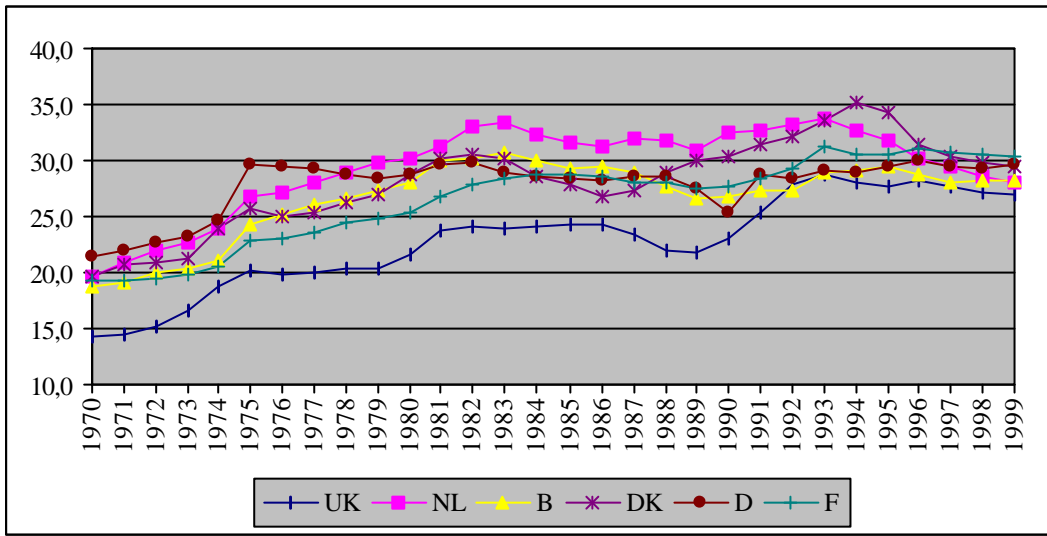
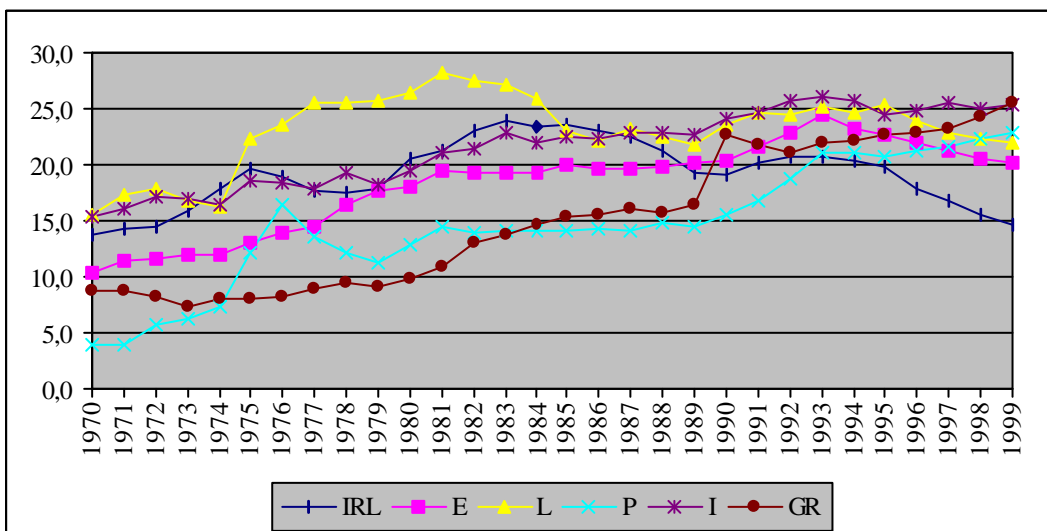


Figure 1.b Social protection expenditure over GDP in EU-12 (in %) 1970-99  
Countries with low social protection ratios (as of 1999)

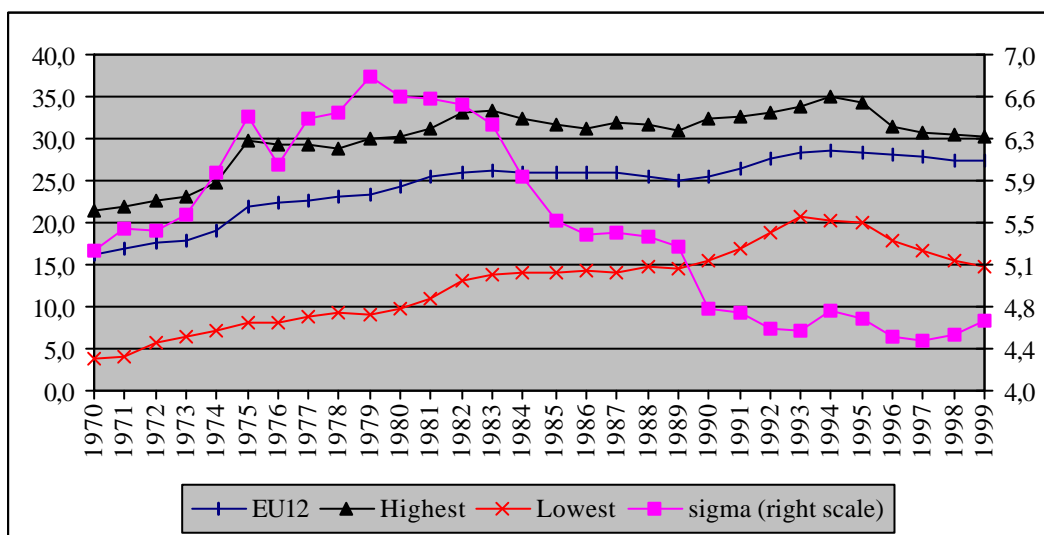


On average (EU-12, Figure 1.c), social protection expenditure rose from 16.3% of GDP in 1970 to 27.5% in 1999 although, as already mentioned, the ratio decreased in the second half of the 1980s and 1990s when GDP was growing rather fast.

Simply computing the standard deviation of the distribution of social protection ratios for the different countries year by year (renamed *sigma* in Figure 1.c) one observes that, in general, dispersion was increasing though the 1970s, dramatically diminishing though the 1980s and oscillating downwards in the 1990s. As a raw measure of general convergence in social protection expenditure, thus, the standard deviation tells us a mixed story.

Shown also in Figure 1.c are the highest and lowest ratios for every year in the period. As one could expect, the series depicted do not correspond to any single country all through the years, as can be seen in Figures 1.a and 1.b. These patterns however tell us clearly that the EU-12 (weighted) average has been dominated by the evolution of social protection expenditure in the countries with higher ratios all though the period due to their larger size.

Figure 1.c Social protection expenditure over GDP in EU-12 (in %) 1970-99  
Summary indicators



### III Time-series convergence

Consider two countries *A* and *B*, and denote their Social Protection Benefits (SPB) to GDP ratios as respectively  $sp^A$  and  $sp^B$ . How are these series evolving along time with respect to each other? Following Bernard and Durlauf (1995 and 1996) and Oxley and Greasley (1995), we can distinguish between *catching-up* and *long-run convergence*.

Catching-up implies that the difference between the two series ( $sp^A - sp^B$ ) is a stochastic variable with a non zero mean, suggesting that the deviation between the series, even if expected to decrease, would not disappear. Formally, assuming two dates,  $t$  and  $t+T$ , and that  $sp_t^A > sp_t^B$  the definition of catching-up implies that

$$(1) \quad E\{sp_{t+T}^A - sp_{t+T}^B | I_t\} < sp_t^A - sp_t^B$$

where  $I_t$  denotes all the information available at  $t$ . Therefore, a stochastic trend in the difference between the two time series would violate the definition (1), although the presence of a deterministic trend, in itself, would not. A sufficient condition for catching-up would be the existence of stochastic cointegration between both variables. Note that this concept of “weak convergence” or “catching-up” could be appropriate in our context, since convergence in SPB/GDP ratios could be an ongoing process.

Conversely, long-run convergence is a more demanding level of convergence, since it implies both the absence of a unit root in the difference between the series  $sp^A$  and  $sp^B$  and a time trend in the deterministic process (i. e., the absence of both stochastic and deterministic trend). Long-run convergence can be formally defined as follows:

$$(2) \quad \lim_{t \rightarrow \infty} E \left\{ sp_{t+T}^A - sp_{t+T}^B \mid I_t \right\} = 0$$

In this case, a sufficient condition for convergence would imply both stochastic and deterministic cointegration between the two series.

As can be seen, statistical tests of catching-up and long-run convergence hinge on the time-series properties of  $(sp_t^A - sp_t^B)$ . These properties are characterised by the order of integration of the deviation from their deterministic paths (Nelson and Plosser, 1982). To that end, we make use of the widely used Augmented Dickey Fuller tests (see Said and Dickey, 1984):

$$(3) \quad \Delta(sp_t^A - sp_t^B) = \mathbf{m} + \mathbf{a} (sp_{t-1}^A - sp_{t-1}^B) + \mathbf{b}t + \sum_{i=1}^k c_i \Delta(sp_{t-i}^A - sp_{t-i}^B) + \mathbf{e}_t$$

Three cases may arise:

- i) if the difference  $(sp_t^A - sp_t^B)$  is not stationary, that would mean that there is no convergence and the SPB/GDP ratios in the two countries will diverge,
- ii) if the difference is stationary, there would be long-run convergence, and
- iii) if the difference is stationary around a trend, it would imply catching-up.

In addition, we consider the existence of a structural break over the period when testing for a unit root.

Following Perron (1989, 1997), we allow for the possibility of a one-time structural change in the trend function occurring at time  $T_b$ . Three situations are considered: a change in the intercept, a change in both the intercept and the slope, and a change in the slope. Regarding the transition to the new trend path, and following Perron (1989), two models are evaluated: the “additive outlier model” (AOM) and the “innovational outlier model” (IOM). While the AOM specifies that the change to the new trend function occurs instantaneously (with no further effect on future observations), in the IOM that change takes place gradually (feeding back into the process dynamics).

In the case of the IOM, the unit-root test is performed using the  $t$ -statistic for testing  $\mathbf{a} = 1$  in the following regressions:

$$(4) \quad \text{IOM-1: } sp_t^A - sp_t^B = \mathbf{m} + \mathbf{b}t + \mathbf{q} DU_t + \mathbf{d} D(T_b)_t + \mathbf{a}(sp_{t-1}^A - sp_{t-1}^B) + \sum_{i=1}^k c_i \Delta(sp_{t-i}^A - sp_{t-i}^B) + \mathbf{e}_t$$

$$(5) \quad \text{IOM-2: } sp_t^A - sp_t^B = \mathbf{m} + \mathbf{b}t + \mathbf{q} DU_t + \mathbf{g} DT_t + \mathbf{d} D(T_b) + \mathbf{a}(sp_{t-1}^A - sp_{t-1}^B) + \sum_{i=1}^k c_i \Delta(sp_{t-i}^A - sp_{t-i}^B) + \mathbf{e}_t$$

$$(6) \quad \text{IOM-3: } sp_t^A - sp_t^B = \mathbf{m} + \mathbf{b}t + \mathbf{g}DT_t + \mathbf{a}(sp_{t-1}^A - sp_{t-1}^B) + \sum_{i=1}^k c_i \Delta(sp_{t-i}^A - sp_{t-i}^B) + \mathbf{e}_t$$

where  $D(T_b)_t = 1$  if  $t = T_b + 1$  (0 otherwise);  $DU_t = 1$  if  $t > T_b$  (0 otherwise); and  $DT_t = (t - T_b)$  if  $t > T_b$  (0 otherwise). In equation (4) we allow for a one-time change in the intercept of the trend function, while in equation (5) we allow for both a change in the intercept and in the slope of the trend function, whereas in equation (6) there is a change in the slope of the trend function.

Regarding the AOM, the following two-step procedure is used. First, the series is detrended using the following regressions:

$$(7) \quad \text{AOM-1: } sp_t^A - sp_t^B = \mathbf{m} + \mathbf{b}t + \mathbf{q}DU_t + (s\tilde{p}_t^A - s\tilde{p}_t^B)$$

$$(8) \quad \text{AOM-2: } sp_t^A - sp_t^B = \mathbf{m} + \mathbf{b}t + \mathbf{q}DU_t + \mathbf{g}DT_t + (s\tilde{p}_t^A - s\tilde{p}_t^B)$$

$$(9) \quad \text{AOM-3: } sp_t^A - sp_t^B = \mathbf{m} + \mathbf{b}t + \mathbf{g}DT_t + (s\tilde{p}_t^A - s\tilde{p}_t^B)$$

where  $(s\tilde{p}_t^A - s\tilde{p}_t^B)$  is accordingly defined as the detrended series. As can be seen, in equation (7) we allow for a one-time change in the intercept of the trend function, in equation (8) we allow for both the change in the intercept and the slope of the trend function to take place simultaneously, and in equation (9) we allow for a change only in the slope of the trend function.

For models IOM-1 and IOM-2, the test is then performed using the  $t$ -statistic for testing  $\mathbf{a} = 1$  in the regression:

$$(10) \quad s\tilde{p}_t^A - s\tilde{p}_t^B = \mathbf{a} \left( s\tilde{p}_{t-1}^A - s\tilde{p}_{t-1}^B \right) + \sum_{j=0}^k d_j D(T_b)_{t-j} + \sum_{i=1}^k c_i \left( s\tilde{p}_t^A - s\tilde{p}_t^B \right) + \mathbf{e}_t$$

while for model IOM-3, the second step is of the form:

$$(11) \quad s\tilde{p}_t^A - s\tilde{p}_t^B = \mathbf{a} \left( s\tilde{p}_{t-1}^A - s\tilde{p}_{t-1}^B \right) + \sum_{i=1}^k c_i \Delta \left( s\tilde{p}_{t-i}^A - s\tilde{p}_{t-i}^B \right) + \mathbf{e}_t$$

Note that in regressions (4) to (11), the break date ( $T_b$ ) and the truncation lag ( $k$ ) are treated as unknown. Therefore, to carry out the test procedure, we need to consider a method to choose  $T_b$  and  $k$ . In order to select the break date endogenously, we consider the procedure whereby  $T_b$  is selected as the value, for all possible break points, which minimises the test statistic for testing  $\alpha=1$  in the appropriate autocorrelation specification (see Zivot and Andrews, 1992). Regarding the truncation lag parameter ( $k$ ), we use a general-to-specific recursive approach based on the value of the  $t$ -statistic on the coefficient associated with the last lag in the estimated autocorrelation (see Perron, 1989).<sup>2</sup>

<sup>2</sup> That is, start with a large  $k_{\max}$  and then estimate the model with  $k_{\max}$  lags. If the coefficient of the last included lag is significant at the 10% level, select  $k = k_{\max}$ . Otherwise, reduce the order of lags by one until the coefficient on the last included lag is significant.

#### IV Has there been time series convergence in social protection expenditure in the EU?

As mentioned above, in this paper we have used harmonised data on social protection benefits (SP) and Gross Domestic Product (GDP) collected by EUROSTAT. We then look at the SP/GDP ratio. Our sample covers the period 1970-99 (the latest available), and the countries under study are the EU-12 countries (i.e. Belgium, Denmark, France, Germany, Greece, Ireland, Italy, Luxembourg, the Netherlands, Portugal, Spain and the United Kingdom) that formed the Union before the last enlargement.

Given the central role of Germany in the European Union (see, e.g. Bajo-Rubio et al., 2001), to test for unit roots we apply the Augmented Dickey-Fuller tests to the difference of Social Protection/GDP ratios with respect to Germany. In Table 1 the statistics are reported for the levels and first differences, where the lag length ( $k$ ) is optimally chosen using the sequential procedure suggested by Perron (1989), with the maximum lag length ( $k_{\max}$ ) set to 5.<sup>3</sup> As one can see, for all the series the null hypothesis of a unit root cannot be rejected at conventional significance level. These results suggest that there has not been (long-run or strong) convergence between these countries and Germany.

Table 1. Augmented Dickey-Fuller unit root tests <sup>a,b,c</sup>  
Difference of Social Protection/GDP ratios with respect to Germany (1970-1999)

| Variable    | I(2) vs. I(1)        |                     |               | I(1) vs. I(0)        |                     |               |
|-------------|----------------------|---------------------|---------------|----------------------|---------------------|---------------|
|             | $\tau_{\tau}$<br>(1) | $\tau_{\mu}$<br>(2) | $\tau$<br>(3) | $\tau_{\tau}$<br>(1) | $\tau_{\mu}$<br>(2) | $\tau$<br>(3) |
| Belgium     | -3.98*               | -3.96**             | -4.01**       | -1.53                | -1.62               | -1.60         |
| Denmark     | -3.60*               | -3.61*              | -3.65**       | -2.20                | -1.59               | -1.60         |
| France      | -3.64*               | -3.72**             | -3.69**       | -2.32                | -0.90               | -1.17         |
| Greece      | -4.14*               | -3.92**             | -3.80**       | -3.11                | -0.33               | -0.86         |
| Ireland     | -3.82*               | -3.40*              | -3.11**       | -0.59                | -0.40               | 0.77          |
| Italy       | -3.60*               | -3.58*              | -3.63**       | -2.39                | -1.09               | -0.68         |
| Luxembourg  | -3.80*               | -3.71**             | -3.75**       | -1.66                | -1.73               | -0.20         |
| Netherlands | -3.69*               | -3.21*              | -3.29**       | -0.18                | -1.19               | -1.05         |
| Portugal    | -5.73**              | -5.70**             | -4.78**       | -2.51                | -0.32               | -1.41         |
| Spain       | -3.59*               | -3.58*              | -3.64**       | -2.47                | -1.53               | -0.64         |
| UK          | -4.33*               | -4.44**             | -4.49**       | -2.74                | -1.38               | -1.25         |

Notes:

- The optimum lag length is selected as suggested by Perron (1989).
- (1), (2) and (3) denote the Augmented Dickey-Fuller statistics with an intercept and trend, with an intercept, and without an intercept, respectively.
- \* and \*\* denote significance at the 5% and 1% levels, respectively, using Mackinnon's (1991) extended tabulations of critical values.

Next, the test by Perron (1997) and Vogelsang and Perron (1994) is applied to the difference of Social Protection/GDP ratio between these countries and Germany. This test allows us to distinguish between series that are I(1) and series that are stationary around a trend with a structural change. In the former case there will not be convergence, while in the latter case we will find catching-up or weak convergence.

<sup>3</sup> Test results remain qualitatively the same when the maximum lag length  $k_{\max}$  is set to 10. They are not reported to economise on space.



After visual inspection of the data, it was decided to apply the following models to each country: Innovational Outlier Model 2 (IOM-2) (i.e. a gradual change in both the intercept and the slope of the trend function) for Belgium, France, Greece, Ireland, Italy, Spain and the United Kingdom; Additive Outlier Model 2 (AOM-2) (i.e. an instantaneous change in both the intercept and the slope of the trend function) for Denmark and the Netherlands; and Additive Outlier Model 3 (AOM-3) (i.e. a change in the slope of the trend function without any sudden change in the level at the time of the break) for Luxembourg and Portugal.

Table 2. Perron unit root test<sup>a,b</sup>

*Difference in Social Protection/GDP ratio with respect to Germany (1970-1999)*

| Country-model        | Break date<br>$T_b$ | Truncation<br>lag $k$ | Pre-break<br>slope $\hat{b}$ | Intercept<br>change $\hat{q}$ | $\hat{g}^c$      | $\hat{a}^d$ | $t_{\hat{a}}^d$ |
|----------------------|---------------------|-----------------------|------------------------------|-------------------------------|------------------|-------------|-----------------|
| Belgium<br>IOM-2     | 1981                | 4                     | 1.02<br>(5.31)               | 18.04<br>(6.05)               | -1.23<br>(-5.68) | -0.56       | -6.17***        |
| Denmark<br>AOM-2     | 1987                | 5                     | 0.14<br>(2.74)               | 0.73<br>(2.65)                |                  | -0.25       | -5.25**         |
| France<br>IOM-2      | 1990                | 4                     | 0.48<br>(5.92)               | 12.47<br>(4.44)               | -0.58<br>(-5.05) | 0.04        | -6.41***        |
| Greece<br>IOM-2      | 1989                | 4                     | 0.92<br>(5.96)               | 22.36<br>(4.22)               | -0.87<br>(-3.51) | -0.12       | -4.07           |
| Ireland<br>IOM-2     | 1988                | 4                     | 0.35<br>(5.04)               | 25.56<br>(6.86)               | -1.22<br>(-7.04) | -0.15       | -6.98**         |
| Italy<br>IOM-2       | 1988                | 4                     | 0.52<br>(5.50)               | 17.74<br>(4.92)               | -0.76<br>(-4.66) | -0.15       | -5.97**         |
| Luxembourg<br>AOM-3  | 1985                | 4                     | 0.19<br>(2.84)               |                               | -0.63<br>(-2.83) | 0.12        | -5.41**         |
| Netherlands<br>AOM-2 | 1986                | 5                     | 0.39<br>(5.52)               | 17.18<br>(6.37)               |                  | 0.07        | -5.89***        |
| Portugal<br>AOM-3    | 1985                | 0                     | 0.20<br>(4.19)               |                               | 0.41<br>(4.69)   | 0.05        | -5.01***        |
| Spain<br>IOM-2       | 1990                | 4                     | 0.65<br>(7.29)               | 28.44<br>(6.90)               | -1.21<br>(-7.28) | -0.27       | -6.49***        |
| UK<br>IOM-2          | 1988                | 4                     | 0.42<br>(4.70)               | 6.87<br>(2.34)                |                  | -1.24       | -5.51**         |

Notes:

- a. \*, \*\* and \*\*\* denote significance at the 10%, 5% and 1% levels, respectively (see Perron 1994).
- b. t-ratios in parentheses.
- c. Estimate of the change in the slope of the trend function in models IOM-2 and AOM-3. For model IOM-1, it is the estimate of the change in the intercept of the trend function.
- d. Estimated parameters related to the estimate of the sum of the autoregressive coefficient ( $\hat{a}$ ) and its associated  $t$ -statistics of the above estimates for testing  $\mathbf{a} = 1$  ( $t_{\hat{a}}$ ).

Table 2 presents the empirical results of these tests for each country with the corresponding model of the selected trend function. Columns 1 and 2 give, respectively, the date of break in the trend function and the value of the truncation lag parameter  $k$  in the autoregression. Columns 3, 4 and 5 present key estimated parameters of the autoregressions along with their  $t$ -statistics in parentheses:  $\hat{b}$  is the estimate of the initial (pre-break) slope of the trend function,  $\hat{q}$  is the estimate of the change in the intercept of

the trend function in the case of models IOM-2 and AOM-2, and  $\hat{g}$  is the estimate of the change in the slope of the trend function in models IOM-2, AOM-2 and AOM-3. Columns 6 and 7 present the key estimated parameters related to the estimate of the sum of the autoregressive coefficient ( $\hat{a}$ ) and its associated  $t$ -statistics for testing  $a=1$  ( $t_{\hat{a}}$ ).

As can be seen in Table 2, we reject the null hypothesis of the unit root for all countries considered, except for Greece. Therefore, we find evidence of weak convergence or catching-up with respect to Germany for 10 of our 11 countries.

It should be noted that the break date for most countries tends to lie around 1988 to 1990, with few exceptions. In 1990, German reunification took place just before the deep recession of the early 1990s. Regarding the exceptions social protection ratios in Belgium and Luxembourg started to catch-up with that of Germany after having been well above it until, respectively, 1981 and 1985. In Portugal, however, this catching-up process started in 1985, just before its accession to the EU, from a much lower position.

Since the time-series version of catching-up captures a version of cross-sectional test of convergence (see Oxley and Greasley, 1995), our results are in line with those presented in Alonso *et al.* (1998), where the traditional indicators (**b**-convergence and **s**-convergence) suggest a certain degree of convergence in social protection benefits for a panel of 11 EU countries during the 1966-94 period.

As a further test, we also consider the difference of Social Protection/GDP ratios with respect to the EU average. In Table 3, we report the results from the Augmented Dickey-Fuller tests. As shown, for all the series the null hypothesis of a unit root cannot be rejected at conventional significance level. These results suggest that there has not been (long-run or strong) convergence between these countries and the EU average.

Table 3. Augmented Dickey-Fuller unit root tests <sup>a,b,c</sup>  
Difference of Social Protection/GDP ratios with respect to EU-12 average (1970-1999)

| Variable    | I(2) vs. I(1)        |                     |               | I(1) vs. I(0)        |                     |               |
|-------------|----------------------|---------------------|---------------|----------------------|---------------------|---------------|
|             | $\tau_{\tau}$<br>(1) | $\tau_{\mu}$<br>(2) | $\tau$<br>(3) | $\tau_{\tau}$<br>(1) | $\tau_{\mu}$<br>(2) | $\tau$<br>(3) |
| Belgium     | -4.25*               | -3.97**             | -4.05**       | -1.66                | -1.30               | -0.72         |
| Denmark     | -4.08*               | -4.00**             | -4.09**       | -2.81                | -2.51               | -1.05         |
| France      | -4.50**              | -4.60**             | -4.46**       | -2.29                | -1.08               | 0.09          |
| Germany     | -4.09*               | -4.18**             | -4.21**       | -2.19                | -1.09               | -0.95         |
| Greece      | -4.21*               | -3.76**             | -3.69**       | -2.80                | -0.31               | -0.81         |
| Ireland     | -3.66*               | -3.23*              | -3.11**       | -0.89                | -1.06               | -0.94         |
| Italy       | -3.60*               | -3.27*              | -3.33**       | -2.08                | -1.60               | -0.53         |
| Luxembourg  | -3.64*               | -3.35*              | -3.33**       | -1.83                | -0.89               | -0.35         |
| Netherlands | -3.88*               | -3.46*              | -3.42**       | 0.14                 | -0.25               | -0.56         |
| Portugal    | -5.56**              | -5.57**             | -5.10**       | -2.31                | -1.13               | -1.45         |
| Spain       | -3.86*               | -3.43*              | -3.19*        | -2.22                | -1.90               | -0.35         |
| U.K.        | -3.71*               | -3.34*              | -3.25**       | -2.28                | -1.63               | -1.26         |

Notes:

- The optimum lag length is selected as suggested by Perron (1989).
- (1), (2) and (3) denote the Augmented Dickey-Fuller statistics with an intercept and trend, with an intercept, and without an intercept, respectively.
- \* and \*\* denote significance at the 5% and 1% levels, respectively, using Mackinnon's (1991) extended tabulations of critical values.

Visual inspection of the differences of Social Protection/GDP ratio between individual countries and the EU average suggest applying the following models to each country: Innovational Outlier Model 1 (IOM-1) (i. e., a gradual change in the intercept of the trend function) for France, Ireland and Italy; Innovational Outlier Model 2 (IOM-2) (i.e. a gradual change in both the intercept and the slope of the trend function) for Belgium, Denmark, Germany, Greece, Netherlands, Portugal and Spain; and Additive Outlier Model 3 (AOM-3) (i.e. a change in the slope of the trend function without any sudden change in the level at the time of the break) for Luxembourg and the United Kingdom. In Table 4 we present the empirical results obtained when applying the tests proposed by Perron (1997) and Vogelsang and Perron (1994). It must be noted that, for model IOM-1,  $\hat{g}$  is now the estimate of the change in the intercept of the trend function.

Table 4. Perron unit root test<sup>a,b</sup>

*Difference in Social Protection/GDP ratio with respect to the EU-12 average (1970-1999)*

| Country Model     | Break date $T_b$ | Truncation lag $k$ | Pre-break slope $\hat{b}$ | Intercept change $\hat{q}$ | $\hat{g}^c$      | $\hat{a}^d$ | $t_{\hat{a}}^d$ |
|-------------------|------------------|--------------------|---------------------------|----------------------------|------------------|-------------|-----------------|
| Belgium IOM-2     | 1995             | 4                  | 0.61<br>(2.81)            | -14.60<br>(-2.81)          |                  | 0.57        | -5.37**         |
| Denmark IOM-2     | 1992             | 5                  | 0.08<br>(2.77)            | 18.26<br>(3.99)            | -0.61<br>(-3.72) | -0.83       | -5.61***        |
| France IOM-1      | 1989             | 3                  | 0.13<br>(3.11)            | -1.11<br>(-3.13)           |                  | 0.13        | -4.81**         |
| Germany IOM-2     | 1990             | 4                  | -0.34<br>(-6.09)          | -13.02<br>(-4.80)          | 0.55<br>(5.14)   | -0.14       | -5.51***        |
| Greece IOM-2      | 1989             | 0                  | 0.12<br>(4.38)            | -8.66<br>(3.66)            | 0.31<br>(3.41)   | 0.84        | -2.39           |
| Ireland IOM-1     | 1992             | 2                  | -0.09<br>(2.95)           | -4.49<br>(6.22)            |                  | 0.56        | -4.87**         |
| Italy IOM-1       | 1991             | 3                  | 0.17<br>(4.74)            | -1.71<br>(-3.16)           |                  | 0.46        | -4.71**         |
| Luxembourg AOM-3  | 1977             | 4                  | 0.63<br>(4.15)            |                            | -0.95<br>(-5.36) | 0.11        | -4.09**         |
| Netherlands IOM-2 | 1990             | 5                  | 0.30<br>(3.79)            | 14.90<br>(3.22)            | -0.73<br>(-3.64) | -0.21       | -5.94***        |
| Portugal IOM-2    | 1985             | 5                  | -0.49<br>(-6.95)          | -29.31<br>(-10.26)         | 1.70<br>(10.61)  | -1.34       | -9.77***        |
| Spain IOM-2       | 1990             | 4                  | 0.34<br>(6.19)            | 20.43<br>(5.95)            | -0.83<br>(-6.15) | -0.69       | -6.28***        |
| UK AOM-3          | 1988             | 4                  | 0.06<br>(2.49)            |                            | 0.16<br>(2.40)   | -0.23       | -4.95**         |

Notes:

- a. \*, \*\* and \*\*\* denote significance at the 10%, 5% and 1% levels, respectively (see Perron 1994).
- b. t-ratios in parentheses.
- c. Estimate of the change in the slope of the trend function in models IOM-2 and AOM-3. For model IOM-1, it is the estimate of the change in the intercept of the trend function.
- d. Estimated parameters related to the estimate of the sum of the autoregressive coefficient ( $\hat{a}$ ) and its associated t-statistics of the above estimates for testing  $\mathbf{a} = 1$  ( $t_{\hat{a}}$ ).

As shown, we reject the null hypothesis of the unit root for all countries considered, except for Greece. Therefore, we find evidence of weak convergence or catching-up with respect to the EU-12 average for 11 of our 12 countries.

As before, the break date for most countries with respect to the EU-12 average tends to lie around the date of German reunification, although with a wider country variation than in the case where the German social protection ratio was chosen as the benchmark. As a matter of fact, the German and the EU-12 social protection ratios virtually converged in 1990.

## **V Concluding remarks**

This paper has examined the degree of convergence in social protection registered in the EU during the 1970-99 period. To that end, we study the long-run properties of time series of social protection benefits, applying unit root tests that allow for endogenously determined changes in the deterministic trends to data from Eurostat for the 12 member countries that formed the European Union before the enlargement to Austria, Finland and Sweden.

Our results suggest that there is no evidence of long-run or strong convergence (neither with respect to Germany nor with respect to the EU12 average) in Social Protection expenditure to GDP ratios that would imply equalisation of the latter. However we do find evidence of catching-up or weak convergence with respect to both Germany (as a benchmark) and the EU-12 average for all countries, except Greece.

These results, in turn, suggest that some countries have been carrying out a stronger effort as far as social protection is concerned, resulting in their situation converging with that of other countries where social protection expenditure has been much more significant all through the period. This effort can contribute to facilitate factor mobility within Europe and, as we have argued elsewhere, may have implications for the speed of growth in member states and the EU at large (Herce, Sosvilla-Rivero and de Lucio, 2000 and 2001).

## REFERENCES

---

- Alonso, Javier, Miguel A. Galindo, and Simón Sosvilla-Rivero (1998), "Convergence in social protection benefits across EU countries", *Applied Economics Letters*, Vol. 5, pp. 153-155.
- Bajo-Rubio, O., S. Sosvilla-Rivero and F. Fernández-Rodríguez (2001), "Asymmetry in the EMS: New Evidence Based on Non-linear Forecasts", *European Economic Review*, Vol. 45, pp. 451-473.
- Bernard, Andrew B. and Steven N. Durlauf (1995), "Convergence in international output", *Journal of Applied Econometrics*, Vol. 10, pp. 97-108.
- Bernard, Andrew B. and Steven N. Durlauf (1996), "Interpreting tests of convergence hypothesis", *Journal of Econometrics*, Vol. 71, pp. 161-173.
- Eurostat (1996), *Esspros manual 1996*. Eurostat.
- Eurostat (2001), *Social protection expenditures and receipts 1980-1999*. Eurostat.
- Herce, José A., Simón Sosvilla-Rivero and Juan J. de Lucio (2000), "Social Protection Benefits and Growth: Evidence from the European Union", *Applied Economics Letters*, Vol. 7, pp. 255-258.
- Herce, José A., Simón Sosvilla-Rivero and Juan J. de Lucio (2001), "Growth and the Welfare State in the EU: A causality analysis", *Public Choice*, Vol. 109, pp. 55-68.
- Mackinnon, James G. (1991), "Critical values for cointegration test", in Robert F. Engle and Clive W.J. Granger (eds), *Long-run economic relationships* (Oxford: Oxford University Press).
- Nelson, Charles R. and Charles I. Plosser, (1982), "Trends and random walks in macroeconomic time series", *Journal of Monetary Economics*, Vol. 10, pp. 139-162.
- OECD (1990), *Employment Outlook*, Paris: OECD.
- Oxley, Les and David Greasley, (1995), "A time-series perspective on convergence: Australia, UK and USA since 1870", *The Economic Record*, Vol. 71, pp. 259-270.
- Perron, Pierre (1989), "The Great Crash, the oil price shock and the unit root hypothesis", *Econometrica*, Vol. 57, pp. 1361-1401.
- Perron, Pierre (1994), "Trend, unit root and structural change in macroeconomic time series", in B. Bhaskara Rao (ed.), *Cointegration for the applied economist* (London: St. Martin's Press), pp. 113-146.
- Perron, Pierre (1997), "Further evidence on breaking trend functions in macroeconomic variables", *Journal of Econometrics*, Vol. 80, pp. 355-385.
- Said, Said D. and David A. Dickey (1984), "Testing for Unit Root in Autoregressive-Moving Average Models with Unknown Order", *Biometrika*, Vol. 71, pp. 599-607.
- Zivot, Eric and Donald W.K. Andrews (1992), "Further evidence on the Great Crash, the oil price shock and the unit root hypothesis", *Journal of Business and Economic Statistics*, Vol. 10, pp. 251-270.

## TITLES IN THE ENEPRI WORKING PAPER SERIES

---

- No. 19 *Youth Employment in the OECD: Demographic Shifts, Labour Market Institutions and Macroeconomic Shocks*, Juan F. Jimeno and Diego Rodríguez-Palenzuela, March 2003
- No. 18 *Convergence in Social Protection across EU Countries, 1970-1999*, Simón Sosvilla-Rivero, José A. Herce and Juan-José de Lucio, March 2003
- No. 17 *The Impact of the Euro on EMU Trade: The (Early) Effect Is Not so Large*, Sergio de Nardis and Claudio Vicarelli, February 2003
- No.16 *Mutual Recognition in Goods and Services: An Economic Perspective*, Jacques Pelkmans, March 2003
- No. 15 *Estimating the Effects of Fiscal Policy in OECD Countries*, Roberto Perotti, October 2002
- No. 14 *How to Finance Eastern Enlargement of the EU: The Need to Reform EU Policies and the Consequences for the Net Contributor Balance*, Christian Weise, October 2002
- No. 13 *Mutual Recognition, Unemployment and the Welfare State*, Fiorella Kostoris Padoa Schioppa, September 2002
- No. 12 *Internal Migration in Regions of Germany: A Panel Data Analysis*, Ashok Parikh and Michiel Van Leuvensteijn, September 2002
- No. 11 *Interdependent Growth in the EU: The Role of Trade*, María Garcia-Vega and José A. Herce, September 2002
- No. 10 *Equilibrium Rates and Wage Flexibility in Europe*, R.C.M.H. Douven, August 2002
- No. 9 *Midlife Caregiving and Employment: An Analysis of Adjustments in Work Hours and Informal Care for Female Employees in Europe*, C. Katharina Spiess and Ulrike Schneider, February 2002
- No. 8 *Turkey's Performance in Attracting Foreign Direct Investment: Implications of Enlargement*, Henry Loewendahl and Ebru Ertugal-Loewendahl, November 2001
- No. 7 *Is the ECB sufficiently accountable and transparent?* Lorenzo Bini-Smaghi and Daniel Gros, September 2001
- No. 6 *Maastricht and the Choice of Exchange Rate Regime in Transition Countries during the Run-Up to EMU*, György Szapáry, September 2001
- No. 5 *What drove relative wages in France? Structural Decomposition Analysis in a General Equilibrium Framework, 1970-1992*, Sébastien Jean and Olivier Bontout, September 2001
- No. 4 *Foreign Direct Investment and Corporate Income Taxation in Europe*, Agnès Bénassy-Quéré, Lionel Fontagné, and Amina Lahrèche-Révil, April 2001
- No. 3 *European Labour Markets and the Euro: How much flexibility do we really need?*, Michael Burda, March 2001
- No. 2 *Asymmetric Labour Markets in a Converging Europe: Do differences matter?* Ray Barrell and Karen Dury, January 2001
- No. 1 *Fiscal federalism in Western European and selected other countries: Centralisation or decentralisation? What is better for economic growth?*, Ulrich Thiessen, January 2001

## ABOUT ENEPRI

---

The European Network of Economic Policy Research Institutes (ENEPRI) is composed of leading socio-economic research institutes in practically all EU member states and candidate countries that are committed to working together to develop and consolidate a European agenda of research. ENEPRI was launched in 2000 by the Brussels-based Centre for European Policy Studies (CEPS), which provides overall coordination for the initiative.

While the European construction has made gigantic steps forward in the recent past, the European dimension of research seems to have been overlooked. The provision of economic analysis at the European level, however, is a fundamental prerequisite to the successful understanding of the achievements and challenges that lie ahead. ENEPRI aims to fill this gap by pooling the research efforts of its different member institutes in their respective areas of specialisation and to encourage an explicit European-wide approach.

ENEPRI is composed of the following member institutes:

|          |   |
|----------|---|
| CASE     | Center for Social and Economic Research, Warsaw, Poland   |
| CEBR     | Centre for Economic and Business Research, Copenhagen, Denmark                                  |
| CEPII    | Centre d'Etudes Prospectives et d'Informations Internationales, Paris, France                   |
| CEPS     | Centre for European Policy Studies, Brussels, Belgium   |
| CERGE-EI | Centre for Economic Research and Graduate Education, Charles University, Prague, Czech Republic |
| CPB      | Netherlands Bureau for Economic Policy Analysis, The Hague, The Netherlands                     |
| DIW      | Deutsches Institut für Wirtschaftsforschung, Berlin, Germany                                    |
| ESRI     | Economic and Social Research Institute, Dublin, Ireland   |
| ETLA     | Research Institute of the Finnish Economy, Helsinki, Finland                                    |
| FEDEA    | Fundacion de Estudios de Economia Aplicada, Madrid, Spain                                       |
| FPB      | Belgian Federal Planning Bureau, Brussels, Belgium  |
| IE-BAS   | Institute of Economics, Bulgarian Academy of Sciences, Sofia, Bulgaria                          |
| IE-LAS   | Institute of Economics, Latvian Academy of Sciences, Riga, Latvia                               |
| IER      | Institute for Economic Research, Ljubljana, Slovenia  |
| IHS      | Institute for Advanced Studies, Vienna, Austria   |
| ISAE     | Istituto di Studi e Analisi Economica, Rome, Italy  |
| ISCTE    | Instituto Superior de Ciências do Trabalho e da Empresa, Lisbon, Portugal                       |
| ISWE-SAS | Institute for Slovak and World Economy, Bratislava, Slovakia                                    |
| NEI      | New Economy Institute, Vilnius, Lithuania   |
| NIER     | National Institute of Economic Research, Stockholm, Sweden                                      |
| NIESR    | National Institute for Economic and Social Research, London, UK                                 |
| NOBE     | Niezalezny Osrodek Bana Ekonomicznych, Lodz, Poland   |
| PRAXIS   | Center for Policy Studies, Tallinn, Estonia   |
| RCEP     | Romanian Centre for Economic Policies, Bucharest, Romania                                       |
| TÁRKI    | Social Research Centre, Budapest, Hungary   |

This ENEPRI Working Paper series aims at making the research undertaken by the member institutes or in the context of special ENEPRI events known to a wide public. Unless otherwise indicated, the views expressed are attributable only to the author in a personal capacity and not to any institution with which he or she is associated.

ENEPRI publications are partially funded by the European Commission under its Fifth Framework Programme - contract no. HPSE-CT-1999-00004.



**European Network of Economic Policy Research Institutes**

c/o Centre for European Policy Studies

Place du Congrès 1 1000 Brussels Tel: 32(0) 229.39.11 Fax: 32(0) 219.41.51  
Website: <http://www.enepri.org> E-mail: [info@enepri.org](mailto:info@enepri.org)