

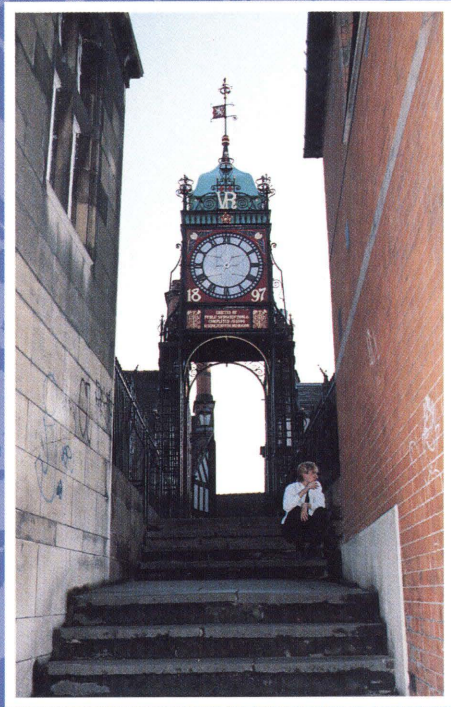
THE NORTH WEST

A REGION
OF THE
EUROPEAN
UNION

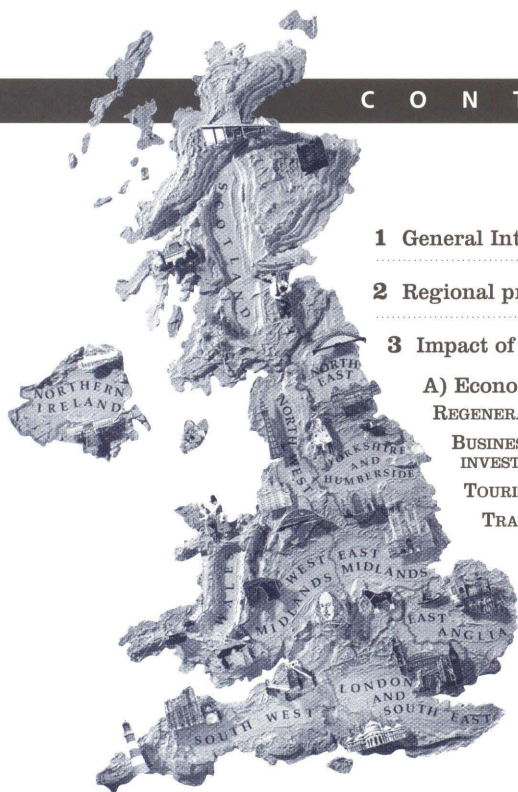
Cheshire, Cumbria, Greater
Manchester, Lancashire, Merseyside



NW



C O N T E N T S



1	General Introduction	3
2	Regional profile	6
3	Impact of EU policies and programmes	8
	A) Economic impact	8
	REGENERATION OF AREAS AND INDUSTRIES	8
	BUSINESS DEVELOPMENT AND OVERSEAS INVESTMENT	10
	TOURISM AND THE ENVIRONMENT	11
	TRANSPORT	12
	RESEARCH AND DEVELOPMENT AND SCIENTIFIC COOPERATION AND ENERGY	13
	RURAL DEVELOPMENT AND AGRICULTURE	14
	CROSS-FRONTIER COOPERATION	15
	B) Social impact	16
	EDUCATIONAL OPPORTUNITIES	16
	TRAINING	16
	SOCIAL SUPPORT MEASURES	17
	C) Cultural impact	19
	RESTORATION OF CULTURAL AND ARCHITECTURAL HERITAGE	19
	INTER-REGIONAL ACTIVITIES - EUROPE WEEKS, TWINNING	20
4	Involvement of local and regional bodies and individuals	21

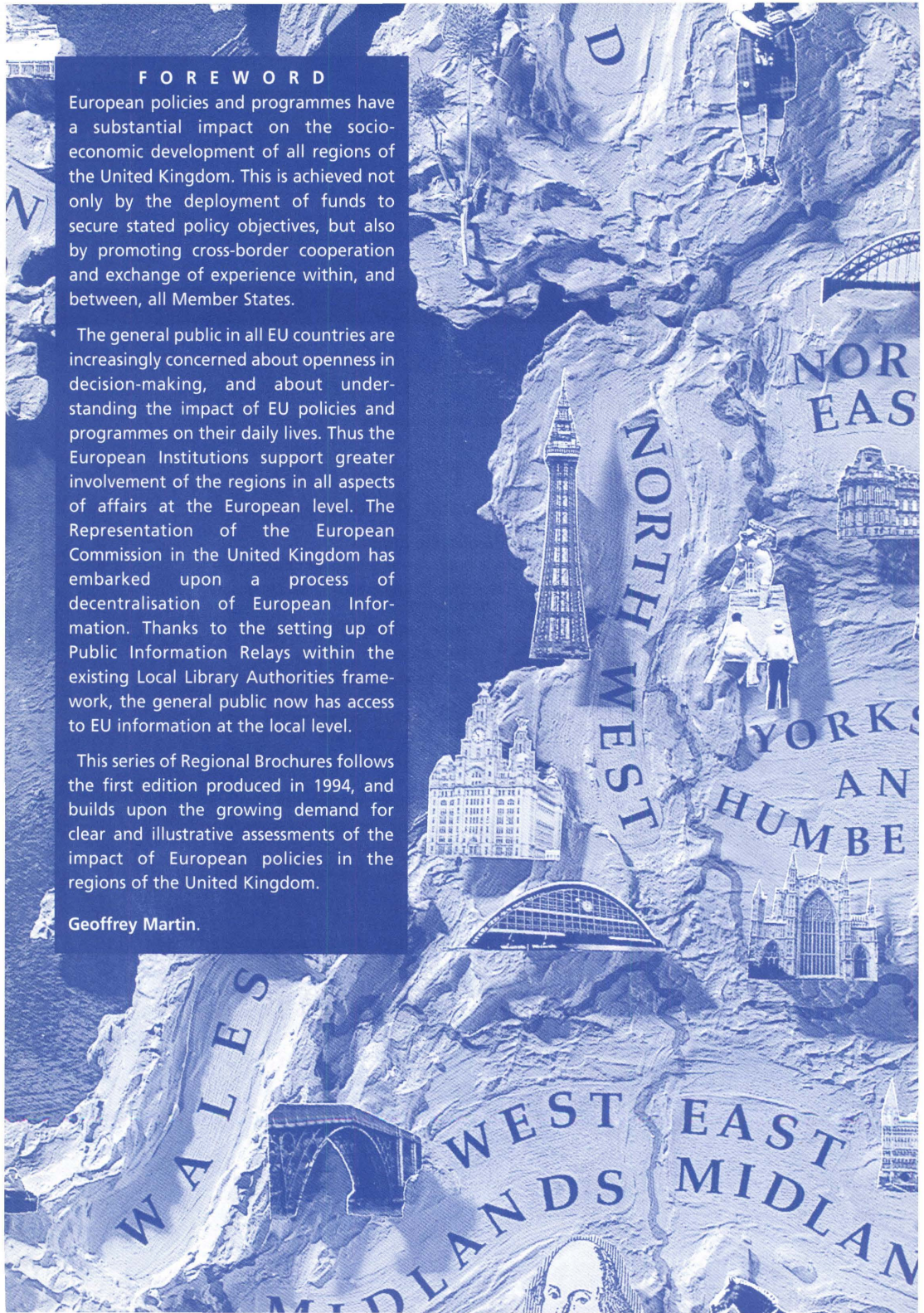
FOREWORD

European policies and programmes have a substantial impact on the socio-economic development of all regions of the United Kingdom. This is achieved not only by the deployment of funds to secure stated policy objectives, but also by promoting cross-border cooperation and exchange of experience within, and between, all Member States.

The general public in all EU countries are increasingly concerned about openness in decision-making, and about understanding the impact of EU policies and programmes on their daily lives. Thus the European Institutions support greater involvement of the regions in all aspects of affairs at the European level. The Representation of the European Commission in the United Kingdom has embarked upon a process of decentralisation of European Information. Thanks to the setting up of Public Information Relays within the existing Local Library Authorities framework, the general public now has access to EU information at the local level.

This series of Regional Brochures follows the first edition produced in 1994, and builds upon the growing demand for clear and illustrative assessments of the impact of European policies in the regions of the United Kingdom.

Geoffrey Martin.



THE EUROPEAN UNION is composed of 15 Member States but it comprises a much greater number of regions whose dynamic diversity is one of the Union's greatest strengths. The current European Union of 15 is clearly very different from the Common Market

1 GENERAL INTRODUCTION

of the original 6. However, its political geography will soon be further changed as negotiations take place over the next few years with Cyprus, Malta and countries in Eastern & Central Europe, the result of which will be a still wider Union. In this radically reshaped Union, the sense of regional identity will be a useful counter-balance to the decision-making by Ministers which national Governments will undertake at the level of the Union itself.

An Inter-Governmental Conference starts in 1996. It will reflect on the current state of the Union and progress made since Maastricht. It will put forward adaptations necessary to carry this reshaped Union forward into the twenty-first century.

The removal of internal frontiers in Europe and the arrangements for completing a Single Market in which there is free movement of people, goods, capital and in the provision of services, has increased the extent of cooperation between regions, be it at the level of the regional or local authorities themselves or through companies and business organisations, or through the educational system and in many other diverse ways. These inter-regional links have grown up throughout the Union, some of them based on Community development programmes



1 GENERAL INTRODUCTION CONTD.

such as INTERREG, while others are of a much simpler kind, based often on long-standing twinning agreements with recent trade-related components added.

As the Union adapts to change, the desire for greater democracy and openness in the way decisions are made at the European level increases. Some discussion is focusing on the future role of national Parliaments where Westminster has a contribution yet to make. A recent development has been the establishment of the Committee of the Regions where European Union matters are appraised from a regional perspective by representatives drawn from the regions themselves.

The broad policies of the European Union affect all its citizens and regions both directly and indirectly. These include the creation of the Single Market, the common trade policies, the Common Agricultural Policy, consumer protection rules, environmental improvement, education and training, social policy including health and safety protection and, of special interest to the regions, the establishment

of Trans-European networks in transport, energy and telecommunications.

There are, of course, certain policies and programmes with a more definite regional perspective. These include the Structural Funds, geared to the poorest regions in the Union and those that have been affected by industrial decline. Many regions have suffered from similar changes in key local industries such as steel, coal, textiles, shipbuilding and the defence sector. Policies have, therefore, been drawn up at the European level to address these problems in a similar way in each country. This is one example of the dynamics which the Union is creating at regional level.

Outside the capital cities and sometimes within the most peripheral regions, much of Europe's scientific and educational resources are based. The development of European-wide policies in these areas has helped forge a vast network of regional links that have become part of the nervous system of the Union as a whole.



In spite of its problems, THE NORTH WEST is now an important contributor to Europe's industrial and cultural prosperity. European policies and programmes increasingly affect the everyday lives of the region's workforce and residents.

Job creation, economic growth and the regeneration and development of disadvantaged areas and groups of people throughout the EU are key objectives. More than £120m was invested in the North

West during 1989-93 to achieve these ends by stimulating small and medium sized companies to grow; tourism; inward investment; improving trans-European transport networks; urban and rural development; encouraging European social and cultural links; adapting to new technologies; retraining people with outdated skills; increasing commercial competitiveness through research and development; and by promoting information technology networking.



Liverpool Town Hall

2 REGIONAL PROFILE

THE NORTH WEST REGION OF ENGLAND comprises the five counties of Cheshire, Cumbria, Greater Manchester, Lancashire and Merseyside. Although the smallest region of the UK, it is extremely diverse. The urban conurbations of Manchester and Merseyside, the UK's industrial backbone, are balanced by greenfield science parks, the rolling countryside of Cheshire and Lancashire and one of the most outstanding areas of natural beauty in Europe - the Lake District in Cumbria. Seven million people also make it the most densely populated region of the UK.

The North West was at the forefront of the industrial revolution and its towns and cities grew wealthy in the early 19th century, a vibrant commercial centre with a world reputation for industrial innovation. However, early industrialisation has left its mark. Much of the area's manufacturing capacity - textiles, coal mining, shipping, engineering and chemicals - is in decline and there are large areas of urban decay caused by past pollution, industrial dereliction and the proximity of poor housing. The end of the Cold War has also created problems in a region heavily involved in the aerospace and defence industries. Yet, well over half the area has a high quality rural environment where agriculture and tourism are major wealth creators. The North West provides 10% of the UK's GDP and 14.1% of manufacturing output.

Cumbria

Cumbria has the region's lowest unemployment rate and although agriculture and tourism are mainstays of the economy, manufacturing is particularly important in the isolated south and west. The County has been adversely affected by major job losses in the nuclear and defence industries while the rural upland areas are also highly vulnerable as a result of declining farm incomes and changes to agricultural subsidies.

Lancashire

Lancashire has diversified its economy relatively successfully from being heavily dependent on textiles and coalmining. High technology firms proliferate, especially in the defence and aerospace industries. However, in the post Cold War era, the economy is again at risk as these industries contract further.



Merseyside

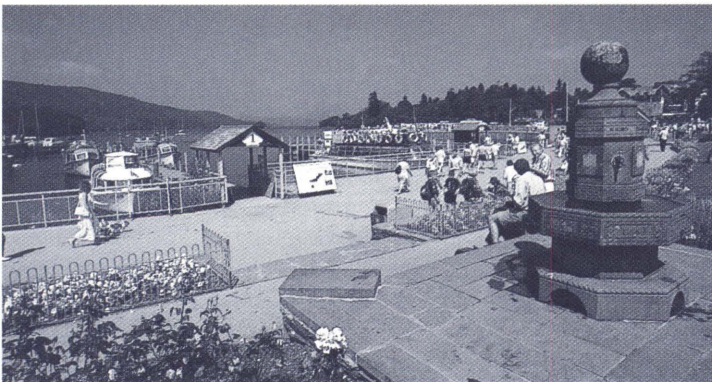
The County has faced a dramatic reversal of fortune, partly due to the decline of the Port of Liverpool as trade has switched to European markets via east coast ports. The urban core of Liverpool, Birkenhead and Bootle have pockets of exceptionally high unemployment, a poor environment and a cycle of dependency and demotivation. Recent projects such as the Freeport, the Albert Dock complex and public and private sector partnerships are reviving the area.

Greater Manchester

In common with other large conurbations, Greater Manchester faces problems of unemployment, social deprivation and population decline. However, Manchester, the regional capital, is building on its strengths to revitalise its economy. It is the largest commercial and financial services centre outside London with excellent universities, an international airport and new infrastructure.

Cheshire

Cheshire has been the most buoyant part of the region showing encouraging growth rates in the population, the creation of new firms and inward investment levels. The airport, excellent communications and a quality environment are likely to make it the most attractive area for future investment. However, chemicals, vehicles and defence industries, all major employers, face an uncertain future.



*Bowness Ferry
Terminal,
Lake Windemere
- Cumbria*



3 IMPACT OF EU POLICIES AND PROGRAMMES

A Economic impact

The EU has had a substantial impact on the region. It has provided financial help for numerous developments.

The major sources of financial aid for the regions are : the European Regional Development Fund (ERDF), the European Social Fund (ESF), the European Agricultural Guidance and Guarantee Fund (EAGGF) and the non-structural funds. These are channelled to designated areas of the EU to alleviate particular problems. Areas are given either Objective 1, 2, 3, 4 or 5b status according to the nature and severity of their needs.

REGENERATION OF AREAS AND INDUSTRIES

The North West is the only region of the UK to receive funding under all objectives of the Structural Funds. EU funds also assist former coal and steel areas, large investments through the European Investment Bank and various education, scientific, research, energy, environmental, cross European link and cultural programmes.

All five counties use EU grants and loans to provide local services to small and medium sized firms to encourage growth and transnational trade. The measures are proving highly successful.

Apart from top-up loans for new and expanding firms, help was given to Lancashire's textile firms to diversify into new, commercially viable markets.

Merseyside is characterised by persistently high unemployment, 70% above the EU average, a GDP 77% of the EU average, declining population and economic activity, loss of job opportunities, especially in manufacturing where they fell by over 40% between 1981 and 1991, and low educational attainment where 28% leave school with no qualifications. In July 1993, Merseyside was granted Objective 1 status to help close this gap in prosperity with the rest of Europe.

Greater Manchester has received European money to remove areas of blight, restore derelict buildings, and improve the town centres of Ashton, Hyde and Radcliffe. East Manchester contains some of the region's most deprived inner city wards and the EU has invested over £5.5m to support projects such as Beswick Centre and the Business Link.

Additional resources have been made available from the EU to a variety of ventures including the Merseyside Special Investment Fund. The largest of its kind in Europe, it was partly financed by the ERDF, the

European Investment Bank, the European Investment Fund and the private sector. It comprises an equity fund, a loans fund and a small firms fund.

Supported by the EU, the Cheshire European Business Development Initiative spurred European awareness, business contacts, joint ventures, trade deals and participation in EU programmes such as EUROPARTENARIAT and the INTERPRISE partnership working with the TECs, Business Links and District Councils.

EU funded projects include:

the Westlakes Science Park, Whitehaven, advance factories in Barrow, managed workspace in Workington and craft workshops in Millom, Cumbria; the Lancashire Business and Innovation Centre; the Wigan Investment Centre, a one-stop shop for business and community advice and support; MIDA Ltd, a film production fund to support the production of feature films on Merseyside; Cariocca Enterprises, new workspace in Ardwick, Greater Manchester, for small and medium sized firms in the black community; the Salford Quays transformation of the former Manchester Docks into a commercial, cultural and tourist centre, creating 4,000 jobs; the Salmon Fields Business Park, Oldham Broadway Business Park, Brookside; the Business Centre and Acorn Centre Managed Workshop Scheme; the trade and economic development links between Cheshire, the Czech Republic and Northern Portugal; and the European Information Points in Ellesmere Port and Chester to help business, the public and County Council services access information and legislation on European affairs. Trafford Park in Greater Manchester was the first, and once the largest, industrial estate in Europe. EU investment between 1987 and 1994 has reclaimed 136 hectares of land, built new roads and attracted 732 new firms creating 15,800 jobs.

A Case Study: Preston Technology Management Centre

The British Aerospace military aircraft factory in Preston closed in 1991 with the loss of 3,000 jobs. Lancashire Enterprises plc co-ordinated a bid for finance from the EU's PERIFRA and KONVER programmes to help defence firms diversify into new markets. This partnership between local government, major defence firms, the TECs and Lancashire Enterprises plc accessed £11m to encourage innovation, establish new investment funds, develop redundant defence industry sites and improve international links. The Preston Technology Management Centre, on the old BAe site, now supports new firms through the transfer of military technologies to civilian applications and provides modern, purpose built, managed workspace.



A Case Study: Cumbria - Westlakes Science and Technology Park, Whitehaven

Ingwell Hall, a 19th century country house set in 30 acres of landscaped ground on the edge of Whitehaven was derelict and in a poor state of repair in the mid 1980's. Since 1989 it has been transformed into the Westlakes Science and Technology Park, playing a vital part in assisting the economic regeneration of West Cumbria. It has been developed by Westlakes Properties, a joint venture between the West Cumbria Development Fund and the Rural Development Commission.

Ingwell Hall has been extensively refurbished and restored and six new two storey pavilions have been built to provide over 40,000 sq ft of modern business facilities and all units have now been fully let. Developed at a cost of £5.5m it has been helped by a grant of £1.54m from the European Regional Development Fund.

In addition the Westlakes Research Institute has been established within the grounds of the Park. It has the aim of becoming recognised as a scientific centre of national and international repute in areas such as Toxicology, Molecular Biology and Cytogenetics.

BUSINESS DEVELOPMENT AND OVERSEAS INVESTMENT

Cheshire is extremely successful in encouraging its small and medium sized firms to trade with other European companies.

Partnerships at local and regional level have participated in programmes such as EUROPARTENARIAT, INTERPRISE, KONVER and DECIDE and used IT networks such as BC-NET, BRE and EuroSYNET to stimulate inter-trading. Cheshire firms signing contracts in Europe as a direct result of these activities include Branlow Ltd, a specialist construction firm from Warrington, Sattcontrol, manufacturers of instrumentation equipment and Northwich based, Roberts Bakery who, surprisingly, successfully export specialist bread and pastries to France. All recognise their competitiveness is linked to EU funding for local support helping them to gain a toehold in European markets.

Competition for inward investment from other regions in Europe is intense. The freeing of Eastern Europe and an enlarged EU are likely to make competition even more fierce. To attract and retain investment, the region needs a suitable portfolio of all types of sites, backed by the funding to bring strategic sites to a marketable position.

EU support for schemes in Cumbria at Derwent Howe, Workington, Furness Business Park and North Shore, Whitehaven, has created 70



hectares of development land and replaced many jobs lost by the closure of old industries. Helped by English Partnerships, Merseyside is developing strategic sites in key locations including Speke-Garston, Hazels Business Park, Atlantic Industrial Estate, Ravenhead Park and Cammell Laird. Links between needs and opportunities are important if Merseyside is to achieve an economic and social revival. A recently launched marketing campaign by the Mersey Partnership will contribute to this.

In Cheshire, EU funds have supported improved access to strategic sites including Chester Business Park which subsequently attracted MBNA International Bank, the largest US investment in the UK in recent years.

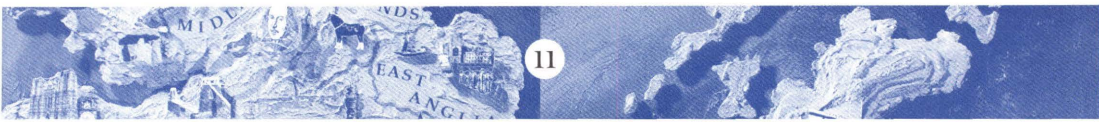
The future success of the North West economy lies in the hands of the region's wealth creators - the firms who export goods and services and those who support these activities. The North West Regional Association and the North West Business Leadership Team, a consortium of large private sector firms, have developed a Regional Economic Strategy. This sets out a vision of the future towards which all private and public sector partnerships in the North West can work. It also sets clear priorities for action and makes the case for UK, European and private sector funding.

Many of the world's leading companies are based in the North West:

Albright and Wilson	Kellogs
British Aerospace	News International
British Nuclear Fuels Ltd	Pilkington
Ciba-Geigy	Pirelli
Eastman Kodak	Rolls-Royce Motor Cars
Ford	Shell Chemicals UK
CEC	Siemens PLC
Heinz	Unilever
ICI	United Biscuits
ICL	Vauxhall
	Zeneca Pharmaceuticals

TOURISM AND THE ENVIRONMENT

One of the region's fastest growing employment sectors is tourism. European funding aims to create further job and cultural opportunities. The Albert Dock in Liverpool has attracted 5 million visitors to the old dock area, second only to the 6.5 million visitors to Blackpool. Many projects also enable to enhance the region's cultural assets (please refer to the section "restoration of cultural and architectural heritage").



The North West has some of the worst and best environments in Europe. Derelict industrial land and polluted rivers, estuaries and canals, mainly a legacy of the region's industrial past, remain serious problems. A poor environment restricts the quality of life for residents and hampers efforts to attract new industry and inward investment.

The Mersey Basin Campaign covers 5,000 sq km around the Mersey Basin and the Ribble Valley towns along the Leeds and Liverpool Canal. Half the 1,700 km of river are classified as bad or poor. Substantial EU funds are being spent to clean up all the river waters so they can support fish by 2010. The EU is also stimulating attractive waterside developments for business, recreation, housing, tourism, protecting heritage and encouraging wildlife such as Wigan Promenade, Canaland Pier 8 in Salford, the aquarium in Maryport, Cumbria and phase 11 of the Dock Museum in Barrow.

An EU funded partnership project is working on pond conservation throughout the North West involving universities in Liverpool, Belgium and the Netherlands.

Future work and funding will be influenced by the national and international agreements and policies in the EU's Fifth Action Programme on the Environment. EU funds are also being sought to help finance all five counties' programmes under Local Agenda 21, the area specific action plans stemming from the Earth Summit in Rio.

TRANSPORT

The North West is geographically some way from the heartland of the EU yet it holds a hub position in the road, rail and air trans European networks. Latest statistics show 77% of the region's exports by volume were destined for Europe. To allow local businesses faster access, the ERDF and European Investment Bank have financed major infrastructure improvements, mainly through loans and guarantees which tend to attract private sector investors.

Manchester Airport is a designated hub on the trans European air network making it the 7th busiest in Europe for international traffic. EU funds have also alleviated the environmental impact through noise reduction and water improvement projects. An application for a second runway was submitted in 1993. Liverpool Airport is also expanding its passenger traffic.

The West Coast Main Line (London - Crewe - Glasgow) including links to Chester, Liverpool and Manchester is in urgent need of modernisation

and upgrading for high speed freight and passenger services, crucial to economic development in the North West. Cumbria, in particular, is disadvantaged by poor communications to the east coast ports and the Channel Tunnel and the lack of a continental freight terminal. Effective lobbying from regional bodies has put the West Coast rail project on the EU's key transport priority list.

Improvements in the regional rail system are a major success such as new links to Manchester Airport, a northern spur to Manchester and a southern spur to Crewe. Electrification of the Hooton to Ellesmere Port and Chester line has greatly enhanced Chester-Ellesmere Port-Liverpool business and leisure links. Chester station has also been considerably redeveloped, making it a far more fitting welcome to visitors to this historic city.

Euroterminals in Liverpool and Manchester and the Channel Tunnel now link the region to Paris in 16 hours and Brussels in under 24 strengthening Liverpool's position as a transshipment point for Europe bound freight from Ireland and North America, rekindling the city's historic role. The Port of Liverpool now handles more freight p.a. than at any time in its history. Rail freight could expand significantly in coming years with freight terminals in Crewe and Warrington and the growth of combined transport services such as road-rail and sea-rail, part of the EU financed network between Ireland, the UK and mainland Europe.

The M62 link road into St Helens has been built but further development of the trans Pennine route is needed to improve the region's link to the Humber and Northern Europe.

£13m from the ERDF co-financed Metrolink, the UK's first on-street Light Rapid Transit system, linking the centre of Manchester with Bury and Altrincham. Such has been the trams' success, plans are well advanced to extend it to the Airport, Trafford Park, Oldham and Rochdale. Other infrastructure improvements such as Manchester's Intermediate Ring Road have helped to attract new investment to the area.

RESEARCH AND DEVELOPMENT AND SCIENTIFIC COOPERATION AND ENERGY

The region has benefitted from a number of EU programmes designed to alleviate problems attendant on economic re-structuring and to promote high quality research and development.

The internationally respected universities, science and technology institutes and business schools in Manchester, Salford, Liverpool and Lancaster attract the highest concentration of students in Western Europe, around 100,000. 40% of all UK computer and science



graduates are from North West universities, creating one of the largest centres of research and development excellence anywhere in the EU.

Close links have developed with partners in the rest of Europe, backed by EU funding through programmes such as COMETT, RACE and ESPRIT. These centres of excellence, part of an extensive network of pan-European partnerships with industry, are helping to maintain the competitiveness of European technology.

Major projects include the Wavertree Technology Park in Merseyside which has secured over 40 high technology and associated companies, employing over 1,500 people. The renovation of the Liverpool Royal Infirmary will create a state of the art technology transfer centre aimed at SME's.

The developing information superhighway brings enormous opportunities for business and commerce and the North West is one of the leading regions in developing the pan-European electronic exchange of information and data. The Inter Regional Information Society Initiative (IRIS) aims to accelerate the information society through services such as worldwide data exchange, telecottaging and video conferencing. In 1994, the North West was selected to take part in an initiative to develop the information society with regions from Germany, France, Greece, Italy and Spain. Its aim is to use information technology to maintain the regions' competitiveness in world markets.

Mersey Travel is the lead partner in a THERMIE funded project called JUPITER to encourage a switch to public transport. The JUPITER network is introducing new, energy efficient buses and evaluating alternative fuels.

RURAL DEVELOPMENT AND AGRICULTURE

Parts of Cheshire, Lancashire and most of Cumbria are dependent on agriculture. The long, slow decline in farm incomes and the shake-up of farm subsidies pose serious threats to rural communities. Again, EU help has been invaluable.

EU funding to develop the rural uplands of Cumbria and Lancashire include a heritage centre in Appleby, an International Design Centre in Sedbergh, a Visitors' Centre at Nenthead in the North Pennines and a Rural Resource Centre in Brampton.

In Cheshire, Reaseheath College of Agriculture, in conjunction with the Eire Agricultural training organisation, promoted a transnational two year project, using Cheshire's expertise, for high technology training in agricultural engineering.



Objective 5b of the Structural Funds is to facilitate the development and structural adjustment of rural areas. The Northern Uplands 5b programme comprises Durham, Cleveland, North Yorkshire, Cumbria and Lancashire (Lancaster, Pendle, The Ribble Valley and Wyre Districts - parts of each in Lancashire). Project themes have been relatively broad and cover the areas of the environment, tourism, site development, small and medium-sized enterprise support and training.

Cumbria - a case study

The Rampgill Visitor Centre, Nenthead is the largest and most important single site associated with the former lead industry of the North Pennines. Mining and smelting have been carried out here for centuries and it was only in 1947 that the site was finally abandoned. Since then over 35ha have remained derelict. The site was listed as a Scheduled Ancient Monument in 1982 and was acquired by Cumbria County Council in 1988. The County Council have devolved responsibility for the conservation, restoration and interpretation of the site to the North Pennines Heritage Trust. A £80,000 grant from the European Regional Development Fund together with £300,000 from Cumbria County Council, Eden District Council, the Rural Development Commission and the Countryside Commission have enabled the North Pennines Heritage Trust to undertake the development of the site into a Visitor Centre. This involves converting former mine buildings into six small craft workshops, offices and a Visitor Centre, scheduled to open in May 1996.

CROSS-FRONTIER COOPERATION

The aim of future EU aid for Merseyside is to achieve economic and social cohesion with other European regions through job creation and increased private sector investment. 25,000 net additional jobs are forecast between 1994 and 1999 with some 370 mecu direct private sector investment and the potential for up to 1.2 - 1.8 becu indirectly. The five priority areas are large firms, small and medium sized companies, research, development and the knowledge base, tourism, culture and the media and the people of Merseyside. A partnership between the Government Office for Merseyside, local authorities, TECs, English Partnership, MDC, higher and further education, the voluntary and private sectors is implementing the programme.

The next programme of EU Structural Funds runs from 1994 to 1999. The axis of the EU is expected to shift to Northern Europe with the integration of the Scandinavian countries and towards the emerging markets of Eastern Europe. Therefore, regional partnerships and co-operation are the best means of ensuring a strong voice in Europe.



B Social impact

EDUCATIONAL OPPORTUNITIES

The North West has a pool of skilled labour but has difficulty in attracting inward investment. Several EU education and training programmes are running in the region to help alleviate these problems and improve skills in unemployment weakspots.

Many schools, colleges and higher education institutions have links with their counterparts in other EU regions. Students from the Graphics Design Department of St Helens College recently exchanged with a college in Munich to illustrate British and German folk stories. Other links with Finland, Sweden and Holland are being developed. The Liverpool Institute of Performing Arts is a major new facility, training people for the performing arts. The City of Learning, a joint public and private initiative is promoting Merseyside as a centre of excellence in all aspects of training and education and is a member of the European Learning Cities Network.

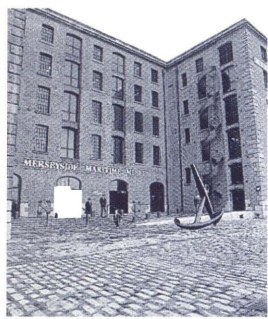
Staff and student exchanges have developed under LINGUA (to improve language training), PETRA (vocational training for young people preparing for working life), FORCE (continued vocational training), TEMPUS (higher education co-operation with Central and Eastern Europe), ERASMUS (improving student mobility) and EUROTECNET (vocational training to overcome technological change). The Youth for Europe programme also allows young people to spend up to three weeks in other EU countries.

TRAINING

Cheshire has also benefited from EU funds to provide vocational guidance, skills training and counselling for employers, young people, the long term unemployed and those with mental and physical disabilities. Community businesses and credit unions have received advice and financial support to meet local social and economic needs.

A Case Study: Merseyside

Blackburne House opened in June 1994, its refurbishment funded by public and private sector money, including £1.4m from the ERDF. It was set up to meet growing demands for the training provided by the Women's Technology Scheme and for a women's resource centre in the city centre.



*Merseyside Maritime
Museum - Liverpool*



The Women's Technology Scheme has earned an international reputation with a 12 year history of success financed by the ESF, Liverpool City Council and the Further Education Funding Council. Its excellence has led to involvement in the European co-ordination of The Inter Regional Information Society Initiative (IRIS) network and continuous requests from other European organisations to enter into partnerships.

Blackburne House has enabled the number of women on full-time training and education courses to increase from 30 to 85 with over 700 others taking short and part-time courses throughout the year. Training focuses on technology, electronics and communications and students receive a training allowance, childcare, personal and professional guidance and counselling. Other facilities include a cafe-bar, sport and health unit, library, nursery and conference room. The building has been carefully renovated by women architects who have sensitively and creatively provided a practical yet, aesthetic environment.

The North West Regional Council of the TUC provides a range of briefings, language translation and education courses in response to the growing impact of Europe on the daily life of the region's workforce.

The TUC Education service runs a number of cross-European, including Central and Eastern Europe, often in conjunction with the AFETT (Association for the European Training of Technology Workers). Most have focused on particular sectors such as changes in the food, banking, audio-visual and vehicle construction industries.

Others have examined key issues such as Works Councils, Total Quality Management and Women in the New Information Technologies. The courses have been attended by partners from the Czech Republic, Denmark, France, Germany, Italy, Ireland and Sweden. Some Education Units have forged their own links with European trade unions under the TUC's auspices. Wigan's Trade Union Education Unit has contacts with the CFDT in Angers, Wigan's French twin town. Blackpool also has links with its twin town's TUC in Bottrop, Germany.

SOCIAL-SUPPORT MEASURES

Eradicating social deprivation is a long term EU objective. In Lancashire, the HORIZON Initiative has allowed college-based learning and supported work placements for people with learning difficulties. EU funds have widened the scope of the work and developed links with other European partners. A local partnership has also provided



counselling, vocational training and wage subsidies for the benefit of less advantaged groups.

Thirty eight locations in Merseyside, covering 35% of the population, have been earmarked for special action through the Pathways Programme which centres on education, training, skills and employment. Three locations in Liverpool, Knowsley and Sefton will be part of the URBAN Community Initiative.

EU funding in Greater Manchester has supported initiatives such as Training for the Chemical Industry, vocational training for the long term unemployed and Electronic Village Halls offering training, teleworking facilities, childcare, advice and meeting space. Some support groups which often face job discrimination such as the Manchester Bangladeshi Association EVH.

Greater Manchester has the region's largest concentration of people and jobs and Manchester itself, is seen as the regional capital. Improving its economy, environment and social conditions will act as a catalyst for the revival of the whole North West. It is at the forefront of new European approaches to urban regeneration. The Moss Side and Hulme URBAN Community Initiative Programme aims to rejuvenate this socially deprived inner city area and create a place people would wish to live, work and invest in. The improvement of social, health, education and security conditions will enable the community to reintegrate with the rest of the conurbation.

Manchester Airport



Cultural impact

RESTORATION OF CULTURAL AND ARCHITECTURAL HERITAGE

The G-Mex centre's success in Manchester has brought new commercial life to the city. Other attractions in Manchester which have benefited from EU assistance include the UK's first indoor cycling velodrome, an international concert hall, Castlefield urban heritage park, and the proposed Millennium Stadium, centrepiece of the city's bid for the 2002 Commonwealth Games. EU support has also gone to the East Lancashire Steam Railway, Wigan Pier, the Ellesmere Port Boat Museum in Cheshire, a new heritage centre in Cumbria's Whitehaven harbour, the UK's first Afro-Caribbean arts complex, the Beatles Tourism Project and the Sefton Palm House. Lancaster's 17th century Judges' Lodgings received the very first grant for a museum project anywhere in Europe.

A Case study: Bridgwater Hall, Manchester

The Bridgwater Hall, Manchester's spectacular new International Concert Hall will open in September 1996, providing a state of the art 2400 seat venue for the Halle Orchestra. It will be the first concert hall in the UK with vibration isolation bearings, to ensure concert-goers are unaware of trains, trams and cars. Replacing the historic Free Trade Hall, to be converted into a hotel, the Bridgwater Hall will enhance the region's reputation for cultural excellence, and will trigger much-needed regenerative activity.

The new hall will host the best performers in the world, accommodating the widest cross-section of interests. It is being built through a partnership on a derelict site adjacent to the Gmex Conference and Convention Centre.

Costing £42million overall, a £14.8 million ERDF grant made the venture possible. The project will create between 1,471 and 1,827 permanent jobs, with a further 660 to 804 induced jobs and 1,154 temporary jobs.

The project has already unlocked further developments such as new offices adjacent and off an arm off the Rochdale Canal to improve the environment in this part of the city. This represents a public/private investment of £100m which will be the springboard for the creative reintegration of adjacent decaying central areas into the economic and social fabric of the Regional Centre.



INTER-REGIONAL ACTIVITIES - EUROPE WEEKS, TWINNING

Many Local Authorities are going through the process of town twinning or looking for opportunities to link up with other Local Authorities in the EU. In many cases it has helped to open up contacts for local businesses looking at European markets and built bridges for the benefits of the wider community in social, educational and cultural fields.

Chester, for example, is now twinned with Sens, a provincial market town an hour's drive south of Paris. Many Sens companies have become interested in doing business with Cestrian firms and Chester City Council recently returned from France with a number of specific enquiries for distribution agents in the North West. The ultimate goal has to be French companies establishing operations in Cheshire and vice versa with French companies being supplied with Cheshire-made products.

Swans on the River

Dee - Chester



4 THE INVOLVEMENT OF LOCAL AND REGIONAL BODIES AND INDIVIDUALS

INFORMATION ON EUROPE can be accessed through a wide network of European Information Centres; European Documentation Centres, local Euro Info Points and other information providers and national coordinators.

The further and higher education sectors are well catered for by their own academic networks whilst the public have access locally through the Public Information Relay Network. Opportunities also exist to access information on Europe through the network of TECs, Business Links and Chambers of Commerce.

i SOURCES OF EUROPEAN UNION INFORMATION

EUROPEAN DOCUMENTATION CENTRES (EDCS)

help universities promote and develop studies in the field of European integration. Some of them receive the complete range of EU documentation, others receive selective documentation. Both enjoy privileged access to EU databases. EDCs also allow access for European information to the public and to students. The EDC network is supported by the European Commission.

The Library
Lancaster University, Bailrigg,
LANCASTER, Lancashire LA1 4YH
Contact: Michael Dunne
Tel: 01524 592 539
Fax: 01524 63806

John Rylands University
Library of Manchester
University of Manchester
Oxford Road, **MANCHESTER**
Greater Manchester M13 9PP
Contact: Dr Hector Blackhurst
Tel: 0161 275 3770
Fax: 0161 275 7488

The Library
Academic Information Services
University of Salford, **SALFORD**
Greater Manchester M5 4WT
Contact: Joanna Wilson

Tel: 0161 745 5846
Fax: 0161 745 5888

CENTRE REFERENCE CENTRES (ERCs)

are based in academic institutions and public libraries. They have small collections of EU publications for reference only. All are open to members of the general public and students. ERCs are, however, not able to offer a specialised consultancy-type service and may direct visitors to another source of information if necessary. The ERC network is supported by the European Commission.

Harris Library
Market place, **PRESTON**
Lancashire PR1 2PP
Contact: Terry Shaw
Tel: 01772 253 191
Fax: 01772 555 527

University of Central Lancashire
The Library, Woodlands Avenue
PRESTON, Lancashire PR1 2TQ
Contact: Ian Sheridan
Tel: 01772 892 284
Fax: 01772 892 960

EURO UNITS

provide a range of European orientated support services to

all providers of vocational training and education. Euro Units have contacts in Government, industry, education and other bodies. Services include: the provision of regional resource and information centres, organisation of conferences, study visits; the development and promotion of initiatives for teaching languages and developing and disseminating of good practice in the Europeanisation of the curriculum.

CENTRA, Chorley,
LANCASHIRE
Tel: 01257 241 428
Fax: 01257 260 357

PUBLIC INFORMATION RELAYS (PIRS)

consist in public libraries who have set up, in partnership with the European Commission, a network to provide the general public with access to EU information on the established policies and programmes of the EU at a local level. They receive some of the information and materials published by EU Institutions and other relevant bodies in printed, and possibly in electronic form.

Tameside Reference Library
Mulberry Street, **ASHTON
UNDER LYNE**, Tameside,
Greater Manchester OL6 6EY
Contact: P. Jones, Reference
& Information Librarian
Tel: 0161 342 2031
Fax: 0161 342 4762

Birkenhead Central Library
Borough Road, **BIRKENHEAD**
Wirral, Merseyside L41 2XB
Contact: Mr R.T. Brocklebank,
Information Services Librarian
Tel: 0151 652 6106
Fax: 0151 653 7320

Central Library
Le Mans Crescent, **BOLTON**
Lancashire BL1 1SE
Contact: Ken Bell,
Central Area Librarian
Tel: 01204 522 311 x 2173
Fax: 01204 363 224

Central Library
Manchester Road, **BURY**
Greater Manchester BL9 0DG
Contact: Alan Boughey,
Reference and Information
Services Librarian
Tel: 0161 705 5871
Fax: 0161 705 5871

Cheshire Libraries and Archives
Ellesmere Port Library
Civic Way, **ELLSMERE PORT**
Cheshire L65 0BG
Contact: Colette Sarson,
Principal Librarian
Tel: 0151 357 7606
Fax: 0151 357 4682

Huyton Library
Derby Road, Huyton,
KNOWSLEY, Merseyside L36 9UJ
Contact: Graham Watson,
Information Services Manager
Tel: 0151 443 3738
Fax: 0151 489 9405

Business and Information
Library

William Brown Street
LIVERPOOL
Merseyside L3 8EW
Contact: Edwin Fleming
Tel: 0151 225 5430
Fax: 0151 207 1342

European Information Unit
Manchester Central Library
St Peter's Square, **MANCHESTER**
Greater Manchester M2 5PD
Contact: Dorothy Connor,
European Information Officer
Tel: 0161 234 1992
Fax: 0161 237 5974

Oldham Library
Union Street, **OLDHAM**
Lancashire OL1 1DN
Contact: Ms J. Hetherington,
Reference Librarian
Tel: 0161 911 4643
Fax: 0161 627 1025

Lancashire County Library
Harris Library, Market Square
PRESTON, Lancashire PR1 2PG
Contact: Terry Shaw
Tel: 01772 204 583
Fax: 01772 555 527

City of Salford
Royston Futter, Vulcan House
Acton Square Crescent
SALFORD,
Greater Manchester M5 4NL
Contact: Robin Culpin,
Principal Libraries and
Information Officer
Tel: 0161 745 7806
Fax: 0161 745 7806

St Helens Central Library
Victoria Square, **ST HELENS**
Merseyside WA10 1DY
Contact: Jill Roughley
Tel: 01744 456 951
Fax: 01744 20836

Stockport Central Library
Wellington Road South
STOCKPORT
Greater Manchester SK1 3RS

Contacts: Lynne Ranson, Head
of Information Services or
Jonathan Massy, Team Librarian
Tel: 0161 474 4522
Fax: 0161 474 7750

Altrincham Library
20 Stamford New Road
Altrincham, **TRAFFORD**
Cheshire WA14 1EJ
Contact: Val Freeman,
Reference Librarian
Tel: 0161 912 5923
Fax: 0161 926 8336

Wigan Library
New Town Hall, Library Street
WIGAN, Greater Manchester
W1N 1DQ
Contact: Julie McDonald,
Information Services Librarian
Tel: 01942 827 625
Fax: 01942 827 640

Workington Library
Cumbria Lane, **WORKINGTON**
Cumbria CA14 2ND
Contact: Trevor Jones,
Senior Librarian
Tel: 01900 603 744 / 6035 311
Fax: 01900 65987

DEPOSITORY LIBRARIES

stock a comprehensive
collection of official EU
documentation which can be
consulted by the general public.
In addition, the material held
by the British Library Document
Supply Centre is available
through the national network
for inter-library lending.

**Liverpool - Business and
Information Library**
Contact: Edwin Fleming
Tel : 0151 225 5430

**Wetherby - British Library
Document Supply Centre**
Contact: Andrew Smith
Tel: 01973 546 044

**LOCAL AUTHORITY
EUROPEAN LIAISON OFFICERS**

are responsible for the coordination of EU general awareness raising activities and/or dissemination of general EU information within the local authority. They may also coordinate their authority's applications for European Union funding.

COUNTY COUNCILS

Cumbria County Council
Carlisle, Cumbria
Contact: Nilima Mistra,
Economic Policy Manager
Tel: 01228 812 286

Cheshire County Council
Chester, Cheshire
Contacts: Helena Muskett;
Marylin Workman
Tel: 01244 602 233/003

Lancashire County Council,
Preston, Lancashire
Contact: Shelagh Powell,
European Liaison Officer
Tel: 01772 263 429

**METROPOLITAN BOROUGH
COUNCILS**

**Tameside Metropolitan
Borough Council,**
Ashton Under Lyne,
Greater Manchester
Contact: Alison Ashworth,
Principal European Liaison Officer
Tel: 0161 342 3535

**Bolton Metropolitan
Borough Council,**
Bolton, Lancashire
Contact: R G Crabtree, Principal
Officer, Strategy and Partnership
Tel: 01204 522 311 x 1049

**Bury Metropolitan Borough
Council,**
Bury, Greater Manchester
Contact: Head of Economic

Development Unit
Tel: 0161 705 5222

**Knowsley Metropolitan
Borough Council,**
Knowsley, Merseyside
Contact: Brian Ham
Tel: 0151 443 3657

**Oldham Metropolitan
Borough Council,**
Oldham, Greater Manchester
Contact: Andrew Fletcher,
Principal Policy Officer
Tel: 0161 911 4187

**Rochdale Metropolitan
Borough Council,**
Rochdale, Greater Manchester
Contact: Gerry Beard, Head of
Economic Affairs
Tel: 01706 864 828

**St Helens Metropolitan
Borough Council,**
St Helens, Merseyside
Contact: John Hawkins
Tel: 01744 456 066

**Sefton Metropolitan
Borough Council,**
Southport, Merseyside
Contact: Paul Spenley,
Principal European Officer
Tel: 0151 934 2179

**Stockport Metropolitan
Borough Council,**
Stockport, Greater Manchester
Contact: William Bradshaw,
Head of Policy Planning
Tel: 0161 474 3011

**Trafford Metropolitan
Borough Council,**
Trafford, Greater Manchester
Contact: Mrs T Marriott,
European Liaison Officer
Tel: 0161 912 4061

**Wirral Metropolitan Borough
Council,** Wallasey, Merseyside
Contact: Ralph Howard,

Assistant Director (Economic
Development)
Tel: 0151 691 8152

**Wigan Metropolitan
Borough Council,**
Wigan, Greater Manchester
Contact: Mrs Ruth Blakeley
Tel: 01942 705 293

DISTRICT/BOROUGH COUNCILS

Hyndburn Borough Council,
Accrington, Lancashire
Contact: Mark Ellison, Principal
Business Development Officer
Tel: 01254 388 111

**Barrow-in-Furness Borough
Council,**
Barrow-in-Furness, Cumbria
Contact: Phil Huck, Economic
Development & European Officer
Tel: 01229 842 269

Blackburn Borough Council,
Blackburn, Lancashire
Contact: Steve Hoyle,
Programme Coordinator
Tel: 01254 585 340

Blackpool Borough Council,
Blackpool, Lancashire
Contact: Stuart Gibson,
Principal Economic
Development Officer
Tel: 01253 699 888

Burnley Borough Council,
Burnley, Lancashire
Contact: Brenda Wilkinson,
European Officer
Tel: 01282 425 011 x 2565

Chorley Borough Council,
Chorley, Lancashire
Contact: Colin Campbell,
Head of Economic
Development & Tourism
Tel: 01257 244 397

Ribble Valley Borough Council,
Clitheroe, Lancashire
Contact: Mrs Pat Ward,



Projects/Economic
Development Officer
Tel: 01200 452 531

**Ellesmere Port & Neston
Borough Council,**

Ellesmere Port, Cheshire
Contact: Nina West, Senior
Economic Development Officer
Tel: 0151 356 6659

South Lakeland District Council,

Kendal, Cumbria
Contact: Martin Jayne, Deputy
Chief Planning Officer
Tel: 01539 733 333 x355

South Ribble Borough Council,

Leyland, Lancashire
Contact: Mr H P Jones, Director
of Development & Housing
Tel: 01772 421 491

Macclesfield Borough Council,

Macclesfield
Contact: A Turzynski, Economic
Development Officer
Tel: 01625 504 670

Wyre Borough Council,

Poulton-Le-Fylde, Lancashire
Contact: Joanne Ford, Assistant
to the Deputy Chief Executive
Tel: 01253 891 000

Preston Borough Council,

Preston, Lancashire
Contact: Mr I Mathieson,
Chief Business & Community
Development Officer
Tel: 01772 266 112

Rossendale Borough Council,

Rossendale, Lancashire
Contact: Arthur Marriott,
Borough Leisure & Industrial
Development Officer
Tel: 01706 217 777

West Lancashire District Council,

Skelmersdale, Lancashire
Contact: Stuart Kitchen,
Economic Development Officer
Tel: 01695 50200

Fylde Borough Council,

St Annes on Sea, Lancashire
Contact: Tracy Morrison,
Assistant Clerk
Tel: 01253 724 152

High Peak Borough Council,

Stockport, Greater Manchester
Contact: Jo Savage,
Policy Assistant
Tel: 01663 751 571

Warrington Borough Council,

Warrington, Cheshire
Contact: Kevin Hoyle,
European Liaison Officer
Tel: 01925 442 332

Halton Borough Council,

Widnes, Cheshire
Contact: Ann Steel,
European Officer
Tel: 0151 424 2061

Vale Royal Borough Council,

Winsford, Cheshire
Contact: Garrick Barton,
External Relations Manager
Tel: 01606 862 862 x 4017

CITY COUNCILS

Carlisle City Council,

Carlisle, Cumbria
Contact: David Beaty, Business
& Employment Manager
Tel: 01228 23411 x 3013

Chester City Council,

Chester, Cheshire
Contact: Mike East, European
Liaison Officer
Tel: 01244 324 324

Lancaster City Council

Lancaster, Lancashire
Contact: Bill Kindon, Principal
Economic Development Officer
Tel: 01524 582 912

Liverpool City Council,

Liverpool, Merseyside
Contact: David Moorcroft,
Senior Coordinator Economic

Development & Europe

Tel: 0151 225 3826

Manchester City Council,

Manchester, Greater Manchester
Contact: Ian McFarlane, Principal
Assistant European Affairs
Tel: 0161 234 3267

Salford City Council,

Salford, Greater Manchester
Contact: Jim Booth, Team
Leader - European Initiatives
Tel: 0161 793 3014

UK MEMBERS OF THE EUROPEAN PARLIAMENT (MEPS) -

There are now 87 MEPs for the UK, who have been elected by universal suffrage for a five year term (1994-1999). Their role is to represent their constituency in the European Parliament, which monitors proposals made by the European Commission and decisions made by the Council of Ministers and can suggest amendments. It also has important powers over the EC budget. MEPs may enquire about any Community legislation by submitting oral and written questions. Finally the Maastricht Treaty gave MEPs new powers of co-decision with the Council of Ministers in certain policy areas.

Cheshire East

Brian Simpson (Labour)
Gilbert Wakefield House
67 Bewsey Street, WARRINGTON,
Cheshire WA2 7JQ
Tel: 01925 654 074
Fax: 01925 240 799

Cheshire West and Wirral

Lyndon Harrison (Labour)
The Euro Office
Watergate Building, Crane Wharf
CHESTER, Cheshire CH1 4JW
Tel: 01244 320 623
Fax: 01244 350 355

Cumbria and Lancashire North

Tony Cunningham (Labour)
Office A, Strawberry How
Business Centre,
Lourton Road, COCKERMOUTH,
Cumbria CA13 9QX
Tel: 01900 826 601
Fax: 01900 827 075

Greater Manchester West

Gary Tittley (Labour)
Euro Office, 16 Spring Lane
Radcliffe, MANCHESTER
Greater Manchester M26 9TQ
Tel: 0161 724 4008
Fax: 0161 724 4009

Greater Manchester East

Glyn Ford (Labour)
46 Stamford Road, MOSSLEY
Lancashire OL5 0BE
Tel: 01457 836 276
Fax: 01457 834 927

Greater Manchester Central

Edward Newman (Labour)
1st Floor, Graphic House
Moseley Road, MANCHESTER
Greater Manchester M19 2LH
Tel: 0161 256 2525
Fax: 0161 257 3000

Lancashire Central

Mark Hendrick (Labour)
Office 11, 20 Queen Street
BLACKPOOL, Lancashire FY1 1PD
Tel: 01253 292 491
Fax: 01253 292 493

Lancashire South

Michael Hindley (Labour)
2nd Floor, Transport House
40-42 Abbey Street, ACCRINGTON
Lancashire BB5 1EB
Tel: 01254 393 103
Fax: 01254 393 379

Merseyside East and Wigan

Terry Wynn (Labour)
European Office, 105
Corporation Street, ST HELENS
Lancashire WA10 1SX
Tel: 01744 451 609

Fax: 01744 29832

Merseyside West

Kenneth Stewart (Labour)
Euro Office, 39 Hale Road
Walton, LIVERPOOL L4 3RL
Merseyside
Tel: 0151 523 2303
Fax: 0151 256 7782

The Peak District

Ms Arlene McCarthy (Labour)
16 North Road, GLOSSOP
Derbyshire SK13 9AS
Tel: 01457 857 300
Fax: 01457 867 339

Staffordshire West and Congleton

Michael Tappin (Labour)
Europa House, 28-30 Hartshill
Road, STOKE-ON-TRENT
Staffordshire ST4 7QU
Tel: 01782 414 771
Fax: 01782 414 805

UK MEMBERS OF THE COMMITTEE OF THE REGIONS RESIDENT IN THIS AREA -

There are 24 UK Members of the Committee of the Regions who are appointed on a political and geographical basis to represent all types of UK local government for a period of four years. Acting as an advisory body, it must be consulted on subjects such as education, youth, culture, public health, transport, etc. It may also take the initiative to give its opinion in other areas of interest to the regions, including agriculture, environmental protection, etc.

Councillor Colin Warbrick

(Conservative)
Trafford Metropolitan Borough
Council, Trafford Town Hall
Stretford, Manchester M32 0YT
Tel : 0161 912 1212
Fax : 0161 848 9738

EUROPEAN INFORMATION CENTRES (EICS) -

provide information on European Union issues to SMEs. EICs receive a continuous flow of information on Europe and have access to EU databases, including Tender Electronic Daily (TED) which carries details of invitations to tender for public works, supply and service contracts. Some EICs also assist companies looking for business partners in the EU through the Business Cooperation Network (BC-Net) - see description below - and advise businesses on their participation in EU activities. The EIC network is supported by the European Commission.

European Information Centre
North West Liverpool Central
Libraries, William Brown Street
LIVERPOOL, Merseyside L3 8EW
Contact: Howard Patterson
Tel: 0151 298 1928
Fax: 0151 207 1342

Manchester Business Link
Churchgate House
56 Oxford Street,
MANCHESTER
Greater Manchester M60 7BL
Contacts: Steve Caroll
or Derek Swan
Tel: 0161 237 4000
Fax: 0161 236 4160

BUSINESS COOPERATION CENTRES NETWORK (BC-NET)

was established by the European Commission to give companies a framework within which to expand into the EU market and the practical means, through specialist support, to develop commercial, financial and technical co-operation at a European level. Its primary task is to help identify, through a

European network of business advisers, other businesses with which they can work. It operates through a network of 600 business advisers, who endeavour to find a partner for any type of business activity, eg mergers, joint ventures, franchises etc. The cost for such a service varies quite considerably. In general, there is an administrative charge and a consultancy fee.

EuroInfoCentre North West
Liverpool Central Libraries
William Brown Street
LIVERPOOL, Merseyside L3 8EW
Contact: Howard Patterson
Tel: 0151 298 1928
Fax: 0151 207 1342

South & East Cheshire TEC
Business Link, PO Box 37,
Dalton Way, **MIDDLEWICH**
Cheshire CW10 0HU
Contact: Mike Collins
Tel: 01606 737 009
Fax: 01606 737 022

Lancashire Enterprises plc
Innovation and Technology
Management Preston Technology
Management Centre
Marsh Lane, **PRESTON**
Lancashire PR1 8UD
Contact: Dennis Langley
Tel: 01772 880 729
Fax: 01772 887 110

INFORMATION CENTRES FOR RURAL AREAS (CARREFOURS) -

the network is an EU initiative designed to provide information on Community policies and measures affecting rural society, promote awareness of rural development and encourage dialogue, partnership and cooperation between members of rural society and regions on common problems

Orbit Carrefour

Old Council Offices,
High Street, Gargstang,
PRESTON, Lancashire PR3 1EB
Tel: 01995 601 207
Fax: 01995 601 208

INNOVATION RELAY CENTRES

promote the EC's research and technological development policy by offering specialist advice to local industry in the identification of partners through the Community Research and Development Information Service (CORDIS), of opportunities for participation in R&D programmes and for the submission of proposals. They provide a range of services to contractors involved in R&D to help them protect, exploit and disseminate the results of their work.

NIMTECH

Alexandra House
Borough Road, ST HELENS
Merseyside WA10 3TN
Contact: Thierry Delange
Tel: 01744 453 366
Fax: 01744 453 377

INTEGRATED REGIONAL GOVERNMENT OFFICES

bring together the regional offices of the Departments of Employment, Environment, Trade and Industry and Transport, pooling their expertise. The role of Government Offices is to work in partnership with the local community to maximise the competitiveness, prosperity and quality of life in the region. They also represent the UK Government in regions. Their European branches provide a secretariat for organisations and individuals on various European programmes including the European Regional Development Fund and the European Agricultural Guidance and

Guarantee Fund, etc. The Scottish Office, Welsh Office and Northern Ireland Office perform similar functions within their area.

Government Office for the North West

Grade 7, Room 2016,
Sunley Tower, Piccadilly Plaza
MANCHESTER
Greater Manchester M1 4BE
Contact: Mr Christopher France
Tel: 0161 952 4378
Fax: 0161 952 4199

Government Office for Merseyside

Executive Officer-Administration
Objective 1 Secretariat
4th floor, Graeme House
Derby Square, LIVERPOOL
Merseyside L2 7SU
Contact: Margaret Mc Beath
Tel: 0151 224 6444
Fax: 0151 224 6472

TRAINING AND ENTERPRISE COUNCILS (TECS)

in England and Wales and Local Enterprise Companies (LECs) in Scotland are independent private companies formed by local business people, working under performance related contracts to the Government. There are 81 TECS covering England and Wales. Their counterparts in Scotland are the 22 LECs. The fundamental aim of every TEC is to foster economic growth and contribute to the regeneration of the community it serves. TEC initiatives include Training for Work, Youth Credits, Modern Apprenticeship, Investors in People, National Vocational Qualifications, Education Business Partnerships, Business Start Up and Business Link.

Chester, Ellesmere Port & Neston and Wirral TEC (CEWTEC),

Birkenhead, Merseyside
Contact: Mr M Zammitt,
European & Enterprise
Development Manager
Tel: 0151 650 0555

Merseyside TEC,

Liverpool, Merseyside
Contact: Ian Lomas, European
Development Officer
Tel: 0151 236 0026

Manchester TEC,

Manchester,
Greater Manchester
Contact: Karen Baildon,
European Development
Co-ordinator
Tel: 0161 236 7222

South and East Cheshire TEC Ltd,

Middlewich, Cheshire
Contact: Mike Collins,
European Liaison Officer
Tel: 01606 737 009

Oldham TEC,

Oldham, Greater Manchester
Contact: Christine Morgan
Tel: 0161 620 0006

Lancashire Area West TEC (LAWTEC),

Preston, Lancashire
Contact: Louise Hale, Strategic
Resourcing Manager
Tel: 01772 792 111

QUALITEC (St Helens) Ltd,

St Helens, Lancashire
Contact: Paul Drew, European
Development Officer
Tel: 01744 24433

Stockport and High Peak TEC,

Stockport, Greater Manchester
Contact: Paul Mooney,
European Development Executive
Tel: 0161 477 8830

North and Mid Cheshire TEC,

Warrington, Cheshire
Contact: Carole Lythall,
European Liaison Officer
Tel: 01925 826 515 or 0800
282 020 (information services)

METROTEC (Wigan) Ltd,

Wigan, Greater Manchester
Contact: Mrs Ellie Hunter,
European Liaison Officer
Tel: 01942 705 295

Cumbria TEC,

Workington, Cumbria
Contact: Pauline Herbert,
European Officer
Tel: 01900 66991

**TRADES UNION CONGRESS
REGIONAL OFFICE**

TUC North West, Transport House
37 Islington, LIVERPOOL L3 8EQ
Contact: Alan Manning,
Secretary
Tel: 0151 298 1225
Fax: 0151 298 1240

**THE NORTH WEST
REGIONAL ASSOCIATION**

aims at promoting the image
and influencing the future
prosperity of the region as well
as acting as a regional voice in
lobbying the UK Government
and European Institution to
represent the best interests of
the North West of England. It
covers the fields of planning,
transportation, economic
development and Europe,
sustainable development and
waste management.

**North West Regional
Association**

New Town Hall, Library Street
PO Box 36, WIGAN
Greater Manchester WN1 1RN
Contact: David Parker
Tel: 01942 827 822
Fax: 01942 827 502

**THE EUROPEAN INFORM-
ATION ASSOCIATION (EIA)**

is an international body of
librarians and information
specialists concerned with
developing, co-ordinating and
improving the provision of infor-
mation on the European Union.

**European Information
Association**

Central Library
St Peter's Square
Manchester M2 5PD
Contact: Catherine Webb
Tel: 0161 228 3691
Fax: 0161 236 6547

THE NORTH
WEST

A Region of The
EUROPEAN UNION



1995 REGIONAL BROCHURES

- 1 **YORKSHIRE AND HUMBERSIDE**
Humberside, North Yorkshire,
South Yorkshire, West Yorkshire
ISBN: 1 86158 002 9
- 2 **THE SOUTH WEST**
Part 1 : Devon and Cornwall
Part 2 : Avon, Dorset, Gloucestershire,
Isle of Scilly, Somerset, Wiltshire
ISBN: 1 86158 003 7
- 3 **THE EAST MIDLANDS**
Derbyshire, Leicestershire,
Lincolnshire, Northamptonshire,
Nottinghamshire
ISBN: 1 86158 004 5
- 4 **THE NORTH WEST**
Cheshire, Cumbria, Greater Manchester,
Lancashire, Merseyside
ISBN: 1 86158 005 3
- 5 **EAST ANGLIA**
Cambridgeshire, Norfolk, Suffolk
ISBN: 1 86158 006 1
- 6 **THE SOUTH EAST**
Part 1: Hampshire, Isle of Wight,
Surrey and West Sussex
Part 2: Berkshire, Buckinghamshire,
Oxfordshire
Part 3: Bedfordshire, Essex,
Hertfordshire
Part 4: East Sussex and Kent
ISBN: 1 86158 007 X
- 7 **THE WEST MIDLANDS**
Hereford and Worcester, Shropshire,
Staffordshire, Warwickshire,
West Midlands
ISBN: 1 86158 008 8
- 8 **THE NORTH EAST**
Cleveland, Durham, Northumberland,
Tyne and Wear
ISBN: 1 86158 009 6
- 9 **LONDON**
ISBN: 1 86158 010 X
- 10 **NORTHERN IRELAND**
ISBN: 1 86158 011 8
- 11 **SCOTLAND**
ISBN: 1 86158 012 6
- 12 **WALES - in English**
ISBN: 1 86158 013 4
- 13 **WALES - in Welsh**
ISBN: 1 86158 014 2

The Regional Brochures have been organised on the basis of the Government's existing standard regions for England. These are the areas covered by the English Regional Associations which, inter alia, are responsible for advising the Secretary of State for the Environment on regional planning guidance. Some of the Regions have been subdivided to reflect their population and/or geographic size. Cumbria has been included in the North West brochure as its European Structural Funds are handled from Manchester, as part of the North West programme.

December 1995

ISBN for complete set: 1 86158 001 0

Designed by: Brandenburger Design, London

Printed by: Cliffe Enterprise

Published by: The Representation of the European Commission in the United Kingdom

Coordinated by: The North West Regional Association

Contributors: David Fletcher, North West Regional Association and Marilyn Workman, Cheshire County Council

Series Editor: Prof Juliet Lodge, Centre for European Studies, University of Leeds

THE NORTH WEST

