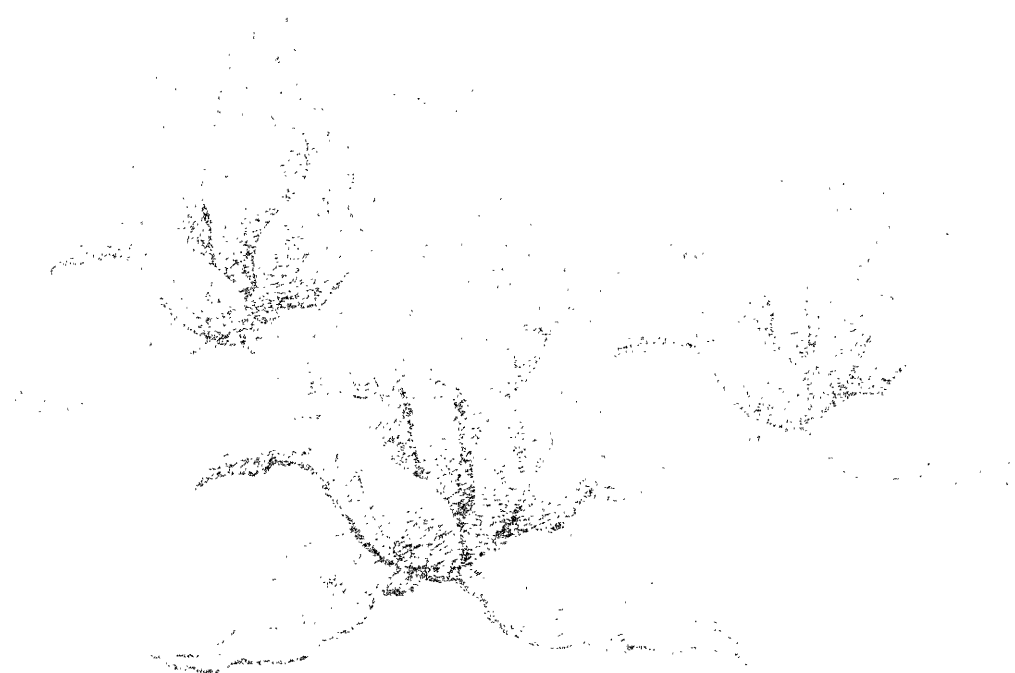


EUROPEAN COMMISSION

# CAP WORKING NOTES

1995



## TOBACCO

DIRECTORATE-GENERAL FOR AGRICULTURE  
Reports, publications, studies and documentation

# **TOBACCO**

# ***1995 edition***

## **EUROPEAN COMMISSION**

Directorate-General for Agriculture  
Reports, publications, studies and documentation

Contact person :           Thierry CLEMENT  
Graphics:                    Maxime ONIDI

130 rue de la Loi, B – 1049 Brussels  
Fax: + 32.2.2957540

---



Cataloguing data can be found at the end of this publication.

Luxembourg: Office for Official Publications of the European Communities, 1995

ISBN 92-827-0034-8

© ECSC-EC-EAEC, Brussels • Luxembourg, 1995

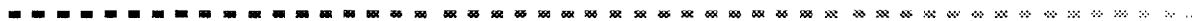
Reproduction is authorized, except for commercial purposes, provided the source is acknowledged.

*Printed in Belgium*



**CONTENTS**

|  | page |
|--|------|
| <b>Introduction</b>  | 5    |
| <b>Description of the mechanisms of the common market organization</b> | 7    |
| <b>The situation of the markets</b>                                    | 11   |
| <b>Council price decisions</b>   | 13   |
| <b>Statistical tables</b>  | 15   |



## INTRODUCTION

The information in this document is arranged in three parts:

- the «analysis» part describes the market situation and the mechanisms of the market organization in the product;
- the «statistics» part gives most of the tables appearing for the product in the annual report on the agricultural situation in the European Union;
- the «Council decisions» on the agricultural prices provide an indispensable illustration of the Community policy.

\*

\*

\*





.....

## DESCRIPTION OF THE MECHANISMS OF THE COMMON MARKET ORGANIZATION\*

The common organization of the market in raw tobacco entered into force on 29 April 1970 under Council Regulation (EEC) No 727/70, as last amended by Regulation (EEC) No 860/92. The market organization underwent substantial reform in 1992, and a new basic Regulation (Council Regulation (EEC) No 2075/92) replaced the 1970 one. It was last amended by Regulation (EC) No 3290/94.

The organization applies to all Community tobacco. The numerous varieties of raw tobacco belong to the following types:

- flue cured (e.g. Virginia);
- light air cured (e.g. Burley);
- dark air cured (e.g. Paraguay);
- fire cured (e.g. Kentucky);
- sun cured (e.g. Erzegovina);
- Basmas;
- Katerini;
- Kaba Koulak (classic).

Expenditure on tobacco accounted for 3.2% of total EAGGF Guarantee Section expenditure in 1994.

There is no marketing year for raw tobacco. Tobacco harvested in a given year is sometimes marketed several years later, which is why the term "harvest" is used in this market organization.

---

\* Translated from *Avant-projet de budget général des Communautés européennes pour l'exercice 1996*.

## 1. Economic background

The Community harvest of raw tobacco totalled 337 968 tonnes in 1993, 17% less than in 1992 (408 500t). The area under tobacco totalled 167 200 hectares in 1993. For the 1994 harvest, the areas under contract totalled 148 100 hectares, and the harvest is expected to be close to the guarantee threshold, i.e. 350 000 tonnes.

The Community's rate of self-sufficiency is around 60%.

As regards trade, exports amounted in 1993 to 209 700 tonnes, compared with 200 400 tonnes in 1992. Imports totalled around 417 000 tonnes in 1993 (527 000 tonnes in 1992).

## 2. Operation of the market

### 2.1. Price arrangements

From 1993 onwards, no institutional price has been set by the Council. On the other hand, the Council has fixed eight levels of premium corresponding to the eight types of tobacco varieties described above.

### 2.2. Specific market instruments

#### 2.2.1. *Import and export arrangements*

In the raw tobacco sector, the common customs tariff affords only limited protection at the frontiers with regard to imports. The system of premiums is intended to compensate for the difference between the purchase price for Community tobacco and the cost price of imported tobacco.

As far as exports are concerned, the new arrangements do not include export refunds. However, for earlier harvests there are still refunds which are granted to cover the difference between the price charged on the world market and Community prices.

#### 2.2.2. *Public storage*

The new basic Regulation does not provide for public storage.



### 2.2.3. *Premiums*

Premiums are paid to tobacco growers via first processors. With effect from the 1994 harvest, the Member States who so choose will have the possibility of paying the aid directly to the producer. To be eligible for the premium, producers and producers' groups must have concluded a cultivation contract. However, for 1993 and 1994, on a transitional basis, the cultivation contract may be replaced by a cultivation declaration if a producers' group wishes to undertake the first processing of its own output itself.

The purpose of the premiums is to guarantee producers a certain level of income, but under the new arrangements the tobacco grower has to take more account of market requirements than in the past.

An additional amount is payable on a transitional basis for flue cured, light air cured and dark air cured varieties grown in Belgium, France and Germany.

To bring supply more into line with market requirements as regards quality, the basic Regulation provides for special aid amounting to 10% of the premium when cultivation contracts are concluded between producers' groups and processors and provided that the contract in question covers the entire production of the producers' group.

### 2.4. **Guarantee thresholds**

The Council decided in 1992, in connection with the agricultural stabilizers, to replace the overall maximum guaranteed quantity, which for the 1992 harvest was 390 000 tonnes (leaf tobacco), by a guarantee threshold of 370 000 tonnes for the 1993 harvest and of 350 000 tonnes from 1994 onwards. This guarantee threshold is broken down by group of varieties and by Member State.

Of the new Member States, Austria has received a guarantee threshold of 600 tonnes which brings that of the Community to 350 600 tonnes.

Exceeding the guarantee threshold, unlike overrun of the maximum guaranteed quantity, which led to a proportional cut in the premium for the variety in question, makes the quantities produced over and above the threshold ineligible for the premium.

## Trend of appropriations\*

(ECU)

| Article                           | Heading                                     | Appropriations<br>1995 | Appropriations<br>1996 |
|-----------------------------------|---|------------------------|------------------------|
| B1-170                            | Refunds on tobacco                          | 21 000 000             | p.m.                   |
| B1-171                            | Premiums for tobacco                        | 1 038 000 000          | 1 022 000 000          |
| B1-172                            | Intervention storage of tobacco             | 1 000 000              | p.m.                   |
| B1-173                            | Conversion premium                          | 45 000 000             | 41 000 000             |
| B1-174                            | Control agencies                            | 16 000 000             | 1 5 000 000            |
| B1-175                            | Community fund for research and information | 11 000 000             | 9 000 000              |
| B1-179                            | Other intervention for tobacco              | p.m.                   | 2 000 000              |
| TOTAL FOR CHAPTER B1-17 (Tobacco) |   | 1 132 000 000          | 1 087 000 000          |

\* For 1995, amounts refer to approved appropriations; for 1996, requested appropriations.

## THE SITUATION OF THE MARKETS\*

In 1993, world production of tobacco remained stable in relation to the 1992 harvest (+ 0.3%), totalling 8.32 million tonnes. With 41.4% of world production, China remains by far the world's biggest producer, followed by the United States, Brazil and India. The European Union, with only 4% of world production, is in fifth place: in 1993 its production of leaf tobacco totalled 337 968 tonnes, which was less than in 1992, when the harvest accounted for 5% of world production.

Despite this stabilization in production, prices continued to fall this year on the markets on Malawi and Zimbabwe, which are considered indicative of world price trends. This downward trend in prices (particularly for flue-cured and light air-cured varieties), which had already begun in 1992, is the result of several years of growing world production and stocks.

World tobacco consumption continues to grow (+ 2.7% between 1992 and 1993). This increase is even more marked in many developing countries, while consumption in the developed countries is tending to drop.

Community tobacco exports amounted to 209 738 tonnes in 1993, the main exports being of the oriental varieties, sought after for their aromatic qualities, and the dark air-cured varieties which have a market in certain low-income countries. The European industry used about 620 821 tonnes of baled tobacco, of which 417 430 tonnes (67.2%) were imported.

The 17% drop in Community production of raw tobacco in relation to 1992 is the direct result of the application, for the first time in 1993, of the reform of the common organization of the market in raw tobacco, adopted in mid-1992. This reform establishes a quota scheme by Member State and group of varieties (there are now 8 groups of varieties, instead of the 34 groups under the old system), and puts an end to intervention and export refunds.

The total quota was set at 370 000 tonnes for 1993 and Community production fell short by 8%. This reconduction is significant for certain varieties such as flue-cured in Greece, which, having escalated to 71 526 tonnes in 1992 as a result of speculation, fell to 37 921 tonnes in 1993, i.e. a reduction of 47%. A comparable trend can be seen in the production of hybrid Guedertheimer and Forchheimer Havana in Italy, which is down 30% in relation to 1992.

The Commission has continued to implement the reform, preparing accompanying measures and strengthening control measures.

---

\* Extract from *The agricultural situation in the European Union. 1994 report.*



## COUNCIL PRICE DECISIONS\*

At its meeting of 22 June 1995, the Council fixed, for the 1995 harvest, the following premiums, supplementary amounts and guarantee thresholds:

### Premiums for leaf tobacco from the 1995 harvest

|        | I<br>Flue<br>cured | II<br>Light air<br>cured | III<br>Dark air<br>cured | IV<br>Fire<br>cured | V<br>Sun<br>cured | VI<br>Basma | VII<br>Katerini | VIII<br>Kaba<br>Koulak |
|--------|--------------------|--------------------------|--------------------------|---------------------|-------------------|-------------|-----------------|------------------------|
| ECU/kg | 2,70965            | 2,16748                  | 2,16748                  | 2,38362             | 2,16748           | 3,75415     | 3,18541         | 2,27615                |

### Supplementary amounts

| Variety   | ECU/kg |
|---|--------|
| Badischer Geudertheimer, Pereg, Korso   | 0,4238 |
| Badischer Burley E and hybrids thereof  | 0,6786 |
| Virgin D and hybrids thereof, Virginia and hybrids thereof  | 0,3876 |
| Paraguay and hybrids thereof, Dragon vert and hybrids thereof, Philippin, Petit Grammont (Flobecq), Semois, Appel terre | 0,3163 |
| Nijkerk   | 0,1847 |
| Misionero and hybrids thereof, Rio Grande and hybrids thereof   | 0,2016 |

---

\* *Official Journal of the European Communities* No L 148, 30.6.1995, p. 40.

Guarantee thresholds for 1995

|          | I<br>Flue<br>cured | II<br>Light<br>air<br>cured | III<br>Dark<br>air<br>cured | IV<br>Fire<br>cured | V<br>Sun<br>cured | Other       |                 |                  | Total<br>(tonnes) |
|----------|--------------------|-----------------------------|-----------------------------|---------------------|-------------------|-------------|-----------------|------------------|-------------------|
|          |                    |                             |                             |                     |                   | VI<br>Basma | VII<br>Katerini | VIII<br>K.Koulak |                   |
| Italy    | 48 000             | 46 500                      | 17 400                      | 6 900               | 14 000            |             |                 |                  | 132 800           |
| Greece   | 30 700             | 12 400                      |                             |                     | 15 700            | 26 100      | 22 250          | 19 550           | 126 700           |
| Spain    | 29 000             | 2 470                       | 10 800                      | 30                  |                   |             |                 |                  | 42 300            |
| Portugal | 5 500              | 1 200                       |                             |                     |                   |             |                 |                  | 6 700             |
| France   | 8 430              | 7 000                       | 12 170                      |                     |                   |             |                 |                  | 27 600            |
| Germany  | 3 000              | 4 500                       | 4 500                       |                     |                   |             |                 |                  | 12 000            |
| Belgium  |                    | 200                         | 1 700                       |                     |                   |             |                 |                  | 1 900             |
| Austria  | 30                 | 570                         |                             |                     |                   |             |                 |                  | 600               |
|          | 124 660            | 74 840                      | 46 570                      | 6 930               | 29 700            | 26 100      | 22 250          | 19 550           | 350 600           |

## STATISTICAL TABLES \*

## Imports and exports of raw tobacco

EUR 12

(1000 t)

|                          | 1991  |       |       | 1992  |       |       | 1993  |       |       |
|--------------------------|-------|-------|-------|-------|-------|-------|-------|-------|-------|
|                          | Intra | Extra | Total | Intra | Extra | Total | Intra | Extra | Total |
| 1                        | 2     | 3     | 4     | 5     | 6     | 7     | 8     | 9     | 10    |
| <b>A. Imports</b>        |       |       |       |       |       |       |       |       |       |
| Flue cured Virginia      | 23,4  | 255,2 | 278,6 | 28,2  | 244,0 | 272,2 | :     | 192,7 | 192,7 |
| Light air cured Burley   | 17,5  | 61,6  | 79,1  | 19,1  | 69,4  | 88,5  | :     | 54,9  | 54,9  |
| Light air cured Maryland | 0,1   | 1,7   | 1,8   | 0,0   | 1,1   | 1,1   | :     | 1,5   | 1,5   |
| Fire cured Kentucky      | 2,5   | 8,6   | 11,1  | 2,3   | 11,2  | 13,5  | :     | 8,6   | 8,6   |
| Other fire cured tobacco | 0,9   | 9,0   | 9,9   | 0,7   | 8,2   | 8,9   | :     | 8,2   | 8,2   |
| Light air cured (other)  | 6,9   | 5,9   | 12,8  | 6,4   | 5,3   | 11,7  | :     | 5,0   | 5     |
| Sun cured                | 24,9  | 26,8  | 51,7  | 23,1  | 34,5  | 57,6  | :     | 27,0  | 27    |
| Dark air cured           | 7,8   | 44,6  | 52,4  | 7,5   | 47,2  | 54,7  | :     | 35,9  | 35,9  |
| Flue cured (other)       | 10,4  | 22,7  | 33,1  | 10,9  | 21,4  | 32,3  | :     | 19,6  | 19,6  |
| Other tobacco            | 16,4  | 11,2  | 27,6  | 11,5  | 10,2  | 21,7  | :     | 5,3   | 5,3   |
| Tobacco refuse           | 31,2  | 80,4  | 111,6 | 26,2  | 74,6  | 100,8 | :     | 58,6  | 58,6  |
| Total                    | 142,0 | 527,7 | 669,7 | 135,9 | 527,1 | 663,0 | :     | 417,3 | 417,3 |
| <b>B. Exports</b>        |       |       |       |       |       |       |       |       |       |
| Flue cured Virginia      | 30,0  | 25,0  | 55,0  | 30,7  | 23,1  | 53,8  | :     | 17,2  | 17,2  |
| Light air cured Burley   | 27,7  | 33,1  | 60,8  | 18,4  | 27,7  | 46,1  | :     | 24,3  | 24,3  |
| Light air cured Maryland | 0,2   | 0,8   | 1,0   | 0,2   | 1,0   | 1,2   | :     | 1,3   | 1,3   |
| Fire cured Kentucky      | 2,6   | 2,5   | 5,1   | 1,9   | 2,3   | 4,2   | :     | 2,9   | 2,9   |
| Other fire cured tobacco | 2,3   | 1,8   | 4,1   | 1,3   | 2,9   | 4,2   | :     | 1,7   | 1,7   |
| Light air cured (other)  | 0,2   | 0,0   | 0,2   | 0,1   | 0,0   | 0,1   | :     | 0,0   | 0,0   |
| Sun cured                | 23,2  | 72,7  | 95,9  | 22,3  | 78,6  | 100,9 | :     | 88,8  | 88,8  |
| Dark air cured           | 9,1   | 54,8  | 63,9  | 6,7   | 34,1  | 40,8  | :     | 30,0  | 30,0  |
| Flue cured (other)       | 7,9   | 8,5   | 16,4  | 7,0   | 9,5   | 16,5  | :     | 20,8  | 20,8  |
| Other tobacco            | 14,5  | 7,0   | 21,5  | 10,3  | 7,0   | 17,3  | :     | 10,8  | 10,8  |
| Tobacco refuse           | 23,6  | 4,5   | 28,1  | 20,0  | 13,3  | 33,3  | :     | 11,9  | 11,9  |
| Total                    | 141,3 | 210,7 | 352,0 | 118,9 | 199,5 | 318,4 | :     | 209,7 | 209,7 |

Source: Eurostat.

\* Extract from *The agricultural situation in the European Union. 1994 report.*

## Area, yield and production of leaf tobacco, by groups of varieties

|                                 |                 | Area    |               |               |                     |                     |
|---------------------------------|-----------------|---------|---------------|---------------|---------------------|---------------------|
|                                 |                 | ha      |               |               | % TAV               |                     |
|                                 |                 | 1985    | 1992 $\times$ | 1993 $\times$ | $\frac{1992}{1985}$ | $\frac{1993}{1992}$ |
|                                 |                 | 3       | 4             | 5             | 6                   | 7                   |
| I Flue cured                    | EUR 12          | 29 489  | 72 528        | 51 847        | 13,7                | -28,5               |
|                                 | BR Deutschland  | 424     | 912           | 1 041         | 11,6                | 14,1                |
|                                 | Elláda          | 164     | 28 796        | 12 362        | 109,2               | -57,1               |
|                                 | España          | 5 626   | 13 800        | 12 410        | 13,7                | -10,1               |
|                                 | France          | 2 647   | 3 560         | 3 963         | 4,3                 | 11,3                |
|                                 | Italia          | 19 274  | 23 561        | 19 984        | 2,9                 | -15,2               |
|                                 | Portugal        | 1 354   | 1 899         | 2 087         | 5,0                 | 9,9                 |
| II Light air cured              | EUR 12          | 34 477  | 29 624        | 26 267        | -2,1                | -11,3               |
|                                 | BR Deutschland  | 1 069   | 1 717         | 1 547         | 7,0                 | -9,9                |
|                                 | Elláda          | 9 926   | 5 213         | 3 664         | -8,8                | -29,7               |
|                                 | España          | 3 248   | 2 906         | 1 930         | -1,6                | -33,6               |
|                                 | France          | 1 815   | 2 560         | 2 619         | 5,0                 | 2,3                 |
|                                 | Italia          | 17 974  | 16 936        | 16 175        | -0,8                | -4,5                |
|                                 | Portugal        | 445     | 292           | 332           | -5,8                | 13,7                |
| III Dark air cured              | EUR 12          | 44 253  | 23 282        | 21 257        | -8,8                | -8,7                |
|                                 | Belgique/België | 543     | 417           | 400           | -3,7                | -4,1                |
|                                 | BR Deutschland  | 1 495   | 1 172         | 1 205         | -3,4                | 2,8                 |
|                                 | España          | 15 530  | 3 070         | 3 252         | -20,7               | 5,9                 |
|                                 | France          | 10 406  | 5 598         | 4 515         | -8,5                | -19,3               |
|                                 | Italia          | 16 279  | 13 025        | 11 885        | -3,1                | -8,8                |
| IV Fire cured                   | EUR 12          | 6 577   | 3 463         | 3 435         | -8,8                | -0,8                |
|                                 | España          | :       | 6             | 11            | $\times$            | 83,3                |
|                                 | France          | :       | 1             | :             | $\times$            | $\times$            |
|                                 | Italia          | 6 577   | 3 456         | 3 424         | -8,8                | -0,9                |
| V Sun cured                     | EUR 12          | 46 967  | 27 382        | 17 239        | -7,4                | -37,0               |
|                                 | Elláda          | 25 897  | 19 255        | 9 304         | -4,1                | -51,7               |
|                                 | Italia          | 21 070  | 8 127         | 7 935         | -12,7               | -2,4                |
| VI, VII, VIII Special sun cured | EUR 12          | 62 692  | 49 047        | 47 169        | -3,4                | -3,8                |
|                                 | Elláda          | 62 692  | 49 047        | 47 169        | -3,4                | -3,8                |
| Raw tobacco                     | EUR 12          | 224 455 | 205 326       | 167 214       | -1,3                | -18,6               |
|                                 | Belgique/België | 543     | 417           | 400           | -3,7                | -4,1                |
|                                 | BR Deutschland  | 2 988   | 3 801         | 3 793         | 3,5                 | -0,2                |
|                                 | Elláda          | 98 679  | 102 311       | 72 499        | 0,5                 | -29,1               |
|                                 | España          | 24 404  | 19 782        | 17 603        | -3,0                | -11,0               |
|                                 | France          | 14 868  | 11 719        | 11 097        | -3,3                | -5,3                |
|                                 | Italia          | 81 174  | 65 105        | 59 403        | -3,1                | -8,8                |
|                                 | Portugal        | 1 799   | 2 191         | 2 419         | 2,9                 | 10,4                |

NB: Classification of tobacco varieties as set out in the Annex to Regulation (EEC) No 2075/92, 30.6.1992

Source: EC Commission, Directorate-General for Agriculture.



|   | Yield     |        |        |                     |                     | Production |         |         |                     |                     |
|---|-----------|--------|--------|---------------------|---------------------|------------|---------|---------|---------------------|---------------------|
|   | 100 kg/ha |        |        | % TAV               |                     | t          |         |         | % TAV               |                     |
|   | 1985      | 1992 x | 1993 x | $\frac{1992}{1985}$ | $\frac{1993}{1992}$ | 1985       | 1992 x  | 1993 x  | $\frac{1992}{1985}$ | $\frac{1993}{1992}$ |
| 8 | 9         | 10     | 11     | 12                  | 13                  | 14         | 15      | 16      | 17                  |                     |
|   | 21,8      | 23,0   | 23,9   | 0,8                 | 4,0                 | 64 387     | 167 040 | 124 129 | 14,6                | -25,7               |
|   | 17,9      | 18,0   | 17,1   | 0,1                 | -5,1                | 758        | 1 640   | 1 777   | 11,7                | 8,4                 |
|   | 22,9      | 24,8   | 30,7   | 1,2                 | 23,5                | 375        | 71 526  | 37 921  | 111,7               | -47,0               |
|   | 17,2      | 21,9   | 22,2   | 3,5                 | 1,7                 | 9 677      | 30 158  | 27 569  | 17,6                | -8,6                |
|   | 22,0      | 18,5   | 20,1   | -2,4                | 8,2                 | 5 834      | 6 602   | 7 951   | 1,8                 | 20,4                |
|   | 23,3      | 22,7   | 23,6   | -0,3                | 4,0                 | 44 831     | 53 517  | 47 193  | 2,6                 | -11,8               |
|   | 21,5      | 18,9   | 8,2    | -1,8                | -56,5               | 2 912      | 3 597   | 1 718   | 3,1                 | -52,2               |
|   | 28,4      | 27,0   | 27,1   | -0,7                | 0,4                 | 97 765     | 79 859  | 71 086  | -2,8                | -11,0               |
|   | 27,7      | 25,0   | 20,4   | -1,5                | -18,3               | 2 962      | 4 290   | 3 158   | 5,4                 | -26,4               |
|   | 30,6      | 25,2   | 31,5   | -2,7                | 25,0                | 30 341     | 13 127  | 11 530  | -11,3               | -12,2               |
|   | 18,1      | 23,0   | 24,3   | 3,5                 | 5,7                 | 5 879      | 6 681   | 4 689   | 1,8                 | -29,8               |
|   | 22,9      | 20,0   | 23,4   | -2,0                | 17,1                | 4 163      | 5 113   | 6 125   | 3,0                 | 19,8                |
|   | 29,7      | 29,5   | 27,7   | -0,1                | -6,0                | 53 385     | 49 890  | 44 775  | -1,0                | -10,3               |
|   | 23,3      | 26,0   | 24,4   | 1,6                 | -6,1                | 1 035      | 758     | 809     | -4,4                | 6,7                 |
|   | 18,9      | 23,0   | 21,4   | 2,8                 | -6,8                | 83 530     | 53 481  | 45 524  | -6,2                | -14,9               |
|   | 38,6      | 33,8   | 37,6   | -1,9                | 11,2                | 2 097      | 1 409   | 1 503   | -5,5                | 6,7                 |
|   | 29,4      | 27,0   | 26,6   | -1,2                | -1,3                | 4 393      | 3 160   | 3 206   | -4,6                | 1,5                 |
|   | 16,7      | 23,3   | 26,0   | 4,9                 | 11,7                | 25 900     | 7 156   | 8 466   | -16,8               | 18,3                |
|   | 24,5      | 22,4   | 26,5   | -1,3                | 18,2                | 25 520     | 12 567  | 11 980  | -9,6                | -4,7                |
|   | 15,7      | 22,4   | 17,1   | 5,2                 | -23,5               | 25 620     | 29 189  | 20 369  | 1,9                 | -30,2               |
|   | 18,3      | 18,8   | 19,5   | 0,4                 | 3,6                 | 12 038     | 6 513   | 6 690   | -8,4                | 2,7                 |
|   | x         | 18,3   | 19,1   | x                   | 4,1                 | :          | 11      | 21      | x                   | 90,9                |
|   | x         | x      | x      | x                   | x                   | :          | 0       | :       | x                   | x                   |
|   | 18,3      | 18,8   | 19,5   | 0,4                 | 3,5                 | 12 038     | 6 502   | 6 669   | -8,4                | 2,6                 |
|   | 14,9      | 15,1   | 18,6   | 0,2                 | 23,3                | 70 008     | 41 263  | 32 042  | -7,3                | -22,3               |
|   | 15,3      | 15,2   | 20,1   | -0,1                | 32,3                | 39 730     | 29 305  | 18 740  | -4,3                | -36,1               |
|   | 14,4      | 14,7   | 16,8   | 0,3                 | 13,9                | 30 278     | 11 958  | 13 302  | -12,4               | 11,2                |
|   | 12,4      | 12,2   | 13,3   | -0,3                | 9,1                 | 78 029     | 59 628  | 62 563  | -3,8                | 4,9                 |
|   | 12,4      | 12,2   | 13,3   | -0,3                | 9,1                 | 78 029     | 59 628  | 62 563  | -3,8                | 4,9                 |
|   | 18,1      | 19,9   | 20,5   | 1,4                 | 3,0                 | 405 757    | 407 784 | 342 034 | 0,1                 | -16,1               |
|   | 38,6      | 33,8   | 37,6   | -1,9                | 11,2                | 2 097      | 1 409   | 1 503   | -5,5                | 6,7                 |
|   | 27,2      | 23,9   | 21,5   | -1,8                | -10,3               | 8 113      | 9 090   | 8 141   | 1,6                 | -10,4               |
|   | 15,0      | 17,0   | 18,0   | 1,7                 | 6,3                 | 148 475    | 173 586 | 130 754 | 2,3                 | -24,7               |
|   | 17,0      | 22,2   | 23,1   | 3,9                 | 4,1                 | 41 456     | 44 006  | 40 745  | 0,9                 | -7,4                |
|   | 23,9      | 20,7   | 23,5   | -2,0                | 13,3                | 35 517     | 24 282  | 26 056  | -5,3                | 7,3                 |
|   | 20,5      | 23,2   | 22,3   | 1,8                 | -4,0                | 166 152    | 151 056 | 132 308 | -1,4                | -12,4               |
|   | 21,9      | 19,9   | 10,4   | -1,4                | -47,4               | 3 947      | 4 355   | 2 527   | 1,4                 | -42,0               |



European Commission

**TOBACCO**

Luxembourg: Office for Official Publications of the European Communities, 1995

1995 – 17 p., 21 x 29,7 cm

ISBN 92-827-0034-8

Venta • Salg • Verkauf • Πωλήσεις • Sales • Vente • Vendita • Verkoop • Venda • Myynti • Försäljning

BELGIQUE / BELGIË

**Moniteur belge/  
Belgisch Staatsblad**  
Rue de Louvain 42/Leuvenseweg 42  
B-1000 Bruxelles/B-1000 Brussel  
Tél. (02) 512 00 26  
Fax (02) 511 01 84

**Jean De Lannoy**  
Avenue du Roi 202/Koningslaan 202  
B-1060 Bruxelles/B-1060 Brussel  
Tél. (02) 538 51 69  
Fax (02) 538 08 41

Autres distributeurs/  
Overige verkooppunten:

**Librairie européenne/  
Europese boekhandel**  
Rue de la Loi 244/Wetstraat 244  
B-1040 Bruxelles/B-1040 Brussel  
Tél. (02) 231 04 35  
Fax (02) 735 08 60

Document delivery:

**Credoc**  
Rue de la Montagne 34/Bergstraat 34  
Boite 11/Bus 11  
B-1000 Bruxelles/B-1000 Brussel  
Tél. (02) 511 69 41  
Fax (02) 513 31 95

DANMARK

**J. H. Schultz Information A/S**  
Herstedvang 10-12  
DK-2620 Albertslund  
Tlf 43 63 23 00  
Fax (Sales) 43 63 19 69  
Fax (Management) 43 63 19 49

DEUTSCHLAND

**Bundesanzeiger Verlag**  
Postfach 10 05 34  
D-50445 Köln  
Tel. (02 21) 20 29-0  
Fax (02 21) 2 02 92 78

GREECE/ΕΛΛΑΔΑ

**G.C. Eleftheroudakis SA**  
International Bookstore  
Nikis Street 4  
GR-10563 Athens  
Tel. (01) 322 63 23  
Fax 323 98 21

ESPAÑA

**Mundi-Prensa Libros, SA**  
Castelló, 37  
E-28001 Madrd  
Tel. (91) 431 33 99 (Libros)  
431 32 22 (Suscripciones)  
435 36 37 (Dirección)  
Fax (91) 575 39 98

**Boletín Oficial del Estado**

Trafalgar, 27-29  
E-28071 Madrd  
Tel (91) 538 22 95  
Fax (91) 538 23 49

Sucursal:

**Librería Internacional AEDOS**  
Consejo de Ciento, 391  
E-08009 Barcelona  
Tel. (93) 488 34 92  
Fax (93) 487 76 59

**Librería de la Generalitat  
de Catalunya**

Rambra dels Estudis, 118 (Palau Moja)  
E-08002 Barcelona  
Tel. (93) 302 68 35  
Tel. (93) 302 64 62  
Fax (93) 302 12 99

FRANCE

**Journal officiel  
Service des publications  
des Communautés européennes**  
26, rue Desaix  
F-75727 Paris Cedex 15  
Tél. (1) 40 58 77 01/31  
Fax (1) 40 58 77 00

IRELAND

**Government Supplies Agency**  
4-5 Harcourt Road  
Dublin 2  
Tel. (1) 66 13 111  
Fax (1) 47 52 760

ITALIA

**Licosa SpA**  
Via Duca di Calabria 1/1  
Casella postale 552  
I-50125 Firenze  
Tel. (055) 64 54 15  
Fax 64 12 57

GRAND-DUCHÉ DE LUXEMBOURG

**Messageries du livre**  
5, rue Raiffeisen  
L-2411 Luxembourg  
Tél. 40 10 20  
Fax 49 06 61

NEDERLAND

**SDU Servicecentrum Uitgeverijen**  
Postbus 20014  
2500 EA 's-Gravenhage  
Tel (070) 37 89 880  
Fax (070) 37 89 783

ÖSTERREICH

**Manz'sche Verlags-  
und Universitätsbuchhandlung**  
Kohlmarkt 16  
A-1014 Wien  
Tel (1) 531 610  
Fax (1) 531 61-181

Document delivery:

**Wirtschaftskammer**  
Wiedner Hauptstraße  
A-1045 Wien  
Tel. (0222) 50105-4356  
Fax (0222) 50206-297

PORTUGAL

**Imprensa Nacional — Casa da Moeda, EP**  
Rua Marquês Sá da Bandeira, 16-A  
P-1099 Lisboa Codex  
Tel (01) 353 03 99  
Fax (01) 353 02 94/384 01 32

**Distribuidora de Livros  
Bertrand, Ld.<sup>a</sup>**

**Grupo Bertrand, SA**  
Rua das Terras dos Vales, 4-A  
Apartado 37  
P-2700 Amadora Codex  
Tel. (01) 49 59 050  
Fax 49 60 255

SUOMI/FINLAND

**Akateeminen Kirjakauppa**  
Akademiska Bokhandeln  
Pohjoisesplanadi 39 / Norra esplanaden 39  
PL / PB 128  
FIN-00101 Helsinki / Helsingfors  
Tel. (90) 121 4322  
Fax (90) 121 44 35

SVERIGE

**BTJ AB**  
Traktorvägen 11  
Box 200  
S-221 00 Lund  
Tel. (046) 18 00 00  
Fax (046) 18 01 25

UNITED KINGDOM

**HMSO Books (Agency section)**  
HMSO Publications Centre  
51 Nine Elms Lane  
London SW8 5DR  
Tel. (0171) 873 9090  
Fax (0171) 873 8463

ICELAND

**BOKABUD  
LARUSAR BLÖNDAL**  
Skólavörðustíg, 2  
IS-101 Reykjavík  
Tel. 551 56 50  
Fax 552 55 60

NORGE

**NIC Info a/s**  
Boks 6512 Etterstad  
0606 Oslo  
Tel. (22) 57 33 34  
Fax (22) 68 19 01

SCHWEIZ/SUISSE/SVIZZERA

**OSEC**  
Stampfenbachstraße 85  
CH-8035 Zurich  
Tel (01) 365 54 49  
Fax (01) 365 54 11

BÄLGARIJA

**Europress Klassica BK Ltd**  
66, bd Vitoshka  
BG-1463 Sofia  
Tel./Fax (2) 52 74 75

ČESKÁ REPUBLIKA

**NIS ČR**  
Havelskova 22  
CZ-130 00 Praha 3  
Tel./Fax (2) 24 22 94 33

HRVATSKA

**Mediatrade**  
P. Hatza 1  
HR-4100 Zagreb  
Tel./Fax (041) 43 03 92

MAGYARORSZÁG

**Euro-Info-Service**  
Európá Ház  
Margitsziget  
H-1138 Budapest  
Tel./Fax (1) 111 60 61, (1) 111 62 16

POLSKA

**Business Foundation**  
ul. Krucza 38/42  
PL-00-512 Warszawa  
Tel (2) 621 99 93, 628 28 82  
International Fax&Phone (0-39) 12 00 77

ROMÂNIA

**Euromedia**  
65, Strada Dionisie Lupu  
RO-70184 Bucuresti  
Tel./Fax 1-31 29 646

RUSSIA

**CCEC**  
9,60-letiya Oktyabrya Avenue  
117312 Moscow  
Tel/Fax (095) 135 52 27

SLOVAKIA

**Slovak Technical  
Library**  
Nám. slobody 19  
SLO-812 23 Bratislava 1  
Tel. (7) 52 204 52  
Fax (7) 52 957 85

CYPRUS

**Cyprus Chamber of Commerce  
and Industry**  
Chamber Building  
38 Grivas Dhigenis Ave  
3 Deligiorgis Street  
PO Box 1455  
Nicosia  
Tel (2) 44 95 00, 46 23 12  
Fax (2) 36 10 44

MALTA

**Miller Distributors Ltd**  
PO Box 25  
Malta International Airport LQA 05 Malta  
Tel. 66 44 88  
Fax 67 67 99

TÜRKIYE

**Pres AS**  
Dunya Infotel  
TR-80050 Tünel-Istanbul  
Tel. (1) 251 91 90/251 96 96  
Fax (1) 251 91 97

ISRAEL

**Roy International**  
17, Shimon Hatarssi Street  
P.O. B. 13056  
61130 Tel Aviv  
Tel (3) 546 14 23  
Fax (3) 546 14 42

Sub-agent for the Palestinian Authority:

**INDEX Information Services**  
PO Box 19502  
Jerusalem  
Tel (2) 27 16 34  
Fax (2) 27 12 19

EGYPT/  
MIDDLE EAST

**Middle East Observer**  
41 Sherif St  
Cairo  
Tel/Fax (2) 393 97 32

UNITED STATES OF AMERICA/  
CANADA

**UNIPUB**  
4611-F Assembly Drive  
Lanham, MD 20706-4391  
Tel. Toll Free (800) 274 48 88  
Fax (301) 459 00 56

CANADA

Subscriptions only  
Uniquement abonnements

**Renouf Publishing Co. Ltd**  
1294 Algoma Road  
Ottawa, Ontario K1B 3W8  
Tel (613) 741 43 33  
Fax (613) 741 54 39

AUSTRALIA

**Hunter Publications**  
58A Gipps Street  
Collingwood  
Victoria 3066  
Tel (3) 9417 53 61  
Fax (3) 9419 71 54

JAPAN

**Procurement Services Int. (PSI-Japan)**  
Kyoku Dome Postal Code 102  
Tokyo Kojimachi Post Office  
Tel. (03) 32 34 69 21  
Fax (03) 32 34 69 15

Sub-agent:

**Kinokuniya Company Ltd  
Journal Department**  
PO Box 55 Chitose  
Tokyo 156  
Tel. (03) 34 39-0124

SOUTH and EAST ASIA

**Legal Library Services Ltd**  
Orchard  
PO Box 0523  
Singapore 9123  
Tel. 243 24 98  
Fax 243 24 79

SOUTH AFRICA

**Safto**  
5th Floor, Export House  
Cnr Maude & West Streets  
Sandton 2146  
Tel. (011) 883-3737  
Fax (011) 883-6569

ANDERE LANDER  
OTHER COUNTRIES  
AUTRES PAYS

**Office des publications officielles  
des Communautés européennes**  
2, rue Mercier  
L-2985 Luxembourg  
Tél. 29 29-1  
Télex PUBOF LU 1324 b  
Fax 48 85 73, 48 68 17



OFFICE FOR OFFICIAL PUBLICATIONS  
OF THE EUROPEAN COMMUNITIES

L - 2985 Luxembourg

ISBN 92-827-0034-8



9 789282 700341 >