



The MED Programmes Handbook
Your Guide to
Euro-Mediterranean Partnership



The EU and its
Mediterranean
Neighbours





The peoples around the shores of the Mediterranean are bound together by shared history, by cultural exchanges in the past and present, by trading links, by common challenges and problems and by their vision for further economic and social development.

Until recently, co-operation between the European Union and the southern and eastern Mediterranean has been essentially economic and commercial. The Mediterranean partners send more than 50 per cent of their exports to Europe. Trade is accompanied by the movement of people. Around 10 million immigrants living in the European Union (EU) are from the Mediterranean partners (MP)*.

Immigration flows are resulting in new multi-racial societies on all sides of the Mediterranean whose future harmony depends on mutual understanding, tolerance and respect. Without these qualities the path to greater prosperity and stability will be thorny. The European Union recognises that economic and commercial development also have social and cultural dimensions and that these must be nurtured and fostered. Conscious of its ties with the southern and eastern Mediterranean, the European Union reviewed its relationship with the Mediterranean partners and launched in 1990 its New Mediterranean Policy, backed by substantial financial resources.

The New Mediterranean Policy has created new possibilities for co-operation between civil societies in the EU and MP. It has set up programmes which contribute to the establishment of mutual confidence between peoples and help to generate common responses to common challenges.

The MED Programmes of the European Union seek to mobilise the most important groups in all civil societies - local authorities, universities, business and the media - and foster contact, understanding and co-operation between them. The programmes do not work through national governments but through decentralised multi-lateral co-operation at regional and local level. In other words, direct links are formed between people, groups or organisations that share common interests and purposes in the EU and Mediterranean partners and among the partners themselves.

The MED Programmes give financial support to the creation of decentralised networks for the exchange of know-how and experience between the European Union and Mediterranean partners.

This process has been given added impetus by the move to create a Euro-Mediterranean Partnership which aims to create a zone of peace and stability and a Euro-Mediterranean economic area based on free trade and substantially increased economic and financial co-operation.

This Partnership has been given major political impetus by the decisions of the European Council successively at Corfu (June 1994), Essen (December 1994) and Cannes (June 1995).

*) The Mediterranean partners are Algeria, Cyprus, Egypt, Israel, Jordan, Lebanon, Malta, Morocco, Palestinian Territories, Syria, Tunisia, Turkey.



QUESTIONS AND ANSWERS

1 What is decentralised co-operation?

"Decentralised" means not working through the political centre, i.e. the national governments, but forming direct links ("networks") between people, groups or organisations that share common interests and purposes.

In this way know-how and experience can be exchanged directly and effectively and personal links are encouraged.

2 Which countries are involved?



The EU countries are:

Austria, Belgium, Denmark, Finland,
France, Germany, Greece, Ireland,
Italy, Luxembourg, Netherlands, Portugal,
Spain, Sweden, United Kingdom.

The Mediterranean partners are:

Algeria, Cyprus, Egypt, Israel,
Jordan, Lebanon, Malta, Morocco,
Palestinian Territories, Syria, Tunisia,
Turkey.

3 What is a MED Programme?

A MED Programme provides a framework within which projects are realised. Each project forms part of a "co-operation network". At present there are four MED Programmes operating: MED-URBS involving town councils and local authorities, MED-CAMPUS involving universities and similar institutions, MED-MEDIA involving media professionals, and MED-INVEST concerning small and medium-sized businesses.

Further programmes are in the planning stages, taking into account other priority areas identified within the Euro-Mediterranean partnership, such as the transfer of technology (see below on MED-TECHNO) and non-profit making organisations working with particular groups in society (women, the young unemployed and the long-term unemployed).

4 Who can participate in the MED Programmes?

The programmes are open to people, groups or organisations seeking to work with others from the same field and exchange experience, ex-

pertise and information. They work in networks on common projects. Eligible partners are defined in each programme description.



QUESTIONS AND ANSWERS

5 What is a network?

A network is a group of people or organisations working together on a project. Each network must include participants from the European Union countries and from the MP.

"Networking" means being active together within the network, with each partner being encouraged to take initiatives and cooperate closely with the other partners. Each network has a leading partner who submits the project and will be the contractor if the project is chosen.

Networks are encouraged to become self-sufficient and to continue working together when the projects end.

In addition there is an overall network of all participants in a MED Programme such as MED-MEDIA or MED-URBS. They can all be kept in contact with one another through the database facilities of the MED Programmes. A quarterly publication MED NEWS is issued with a view to keeping all participants in touch.

6 How do projects get started?

Each year, a "Call for proposals" for projects to be realised within the MED Programmes is published in the Official Journal of the European Communities. The applicants may then submit their proposals.

Each call for proposals specifies the following:

- the objectives of the programme,
- definition of participants,
- project fields,
- priorities (such as balanced co-operation between EU and MP; financial and technical feasibility),
- financing of projects,
- selection procedures and criteria,
- submission of application,
- final date for submission.

7 Where can I get advice on developing a project?

Each programme has a Technical Assistance Office (TAO) which helps to bring the networks into being and keep them going. Before a project is submitted the TAO can:

- identify partners,
- give advice on drawing up a work programme and a budget,
- offer help on methods.

The Technical Assistance Office addresses can be found on the MED Programme pages. Once the call for proposals is published and you have worked out a project, the TAO can provide the application form.

8 How do I submit the application?

You will need to complete the project application form provided by the TAO. Each application form requests the following:

- project description,
- project schedule,
- budget.





QUESTIONS AND ANSWERS

9 How are the projects selected?

The European Commission consults a Committee of Experts from the EU and the Mediterranean partners who identify the projects to be selected according to the priorities drawn up by the European Union.

Each MED Programme has its own Committee of Experts. The final decision is taken by the European Commission.

10 How long does a project run?

Projects can run for a duration of two years (MED-MEDIA and MED-URBS) or three years (MED-CAMPUS) giving scope for development and for continuation of other network activity beyond the duration of the project.

Each year the European Commission will review the progress of the project and decide whether and what level financing should be continued.

11 Who signs the contract?

Following selection of a project, the contract is signed between: (1) the leading partner of the project; (2) the ARTM; and (3) the European Commission.

The ARTM is the Transmediterranean Networks Agency which has day to day responsibility for the financial administration of the MED Programmes.

12 How is the project financed?

The total cost of a project is covered by the European Commission up to a maximum of 80% per project with a ceiling specified in the application form. The funds are allocated by the Commission to the networks via the ARTM. With multi-annual projects, the continuation of co-

financing depends on the progress of the project, which is reviewed annually. The TAOs of the different MED Programmes are there to give technical advice at any stage of the project. Financial and administrative questions should be addressed to ARTM.

13 What are my obligations?

- Fulfil the terms of the contract.
- Participate in meetings organised by the Commission for the networks.
- Report regularly and provide all the necessary information.

14 How is the project reviewed?

Each project is regularly reviewed by the TAO and by the European Commission. The financial support for the network is provided in three instalments each year, depending on the progress of the project, and is paid to the leading partner. The first instalment is due after the

signing of the contract. In addition, each project may be evaluated by the Commission at any time, may be subject to a financial audit by independent experts and must make its reports available to the European Court of Auditors on request.

MED-MEDIA

Quality media, whether press, radio or television, contribute to political, economic, social and cultural development.

The MED-MEDIA Programme aims to increase trans-Mediterranean co-operation between professionals by setting up media networks of high technical and professional standards. This enables media professionals in the Mediterranean partners to benefit from the experience and know-how of their counterparts in the EU. It also permits media professionals to experience and understand the political, cultural and everyday conditions in their partners' countries through regular contacts.



MED-MEDIA in action

MED-MEDIA helps create or strengthen decentralised co-operation networks between media professionals, institutions and organisations.

As well as raising professional media standards and improving working conditions in the Mediterranean partners, MED-MEDIA aims to foster mutual understanding and to encourage long-term contacts among media professionals. It began with a pilot phase in 1993-94 supporting 31 projects. In 1995, a total of 35 projects were selected.

Projects can involve co-productions, training, professional exchanges, seminars and workshops and distribution.

Who can take part?

MED-MEDIA is open to networks of media professionals (working for the press, radio or television), public media institutions and private media organisations in the EU and Mediterranean partners. Each network must involve participants from at least one MP and at least two from different EU countries. There is strong encouragement for networks with more than one MP participant.

Projects must involve direct, hands-on co-operation between MP and EU media professionals. An example is Hanan Ashrawi's film 'A Woman of Her Time'. This film is an intimate portrait of Hanan Ashrawi, Palestinian spokeswoman, human rights activist and leading player in the drama of a newly-born state.



MED-MEDIA

Financing

Each network with its project is co-financed up to a maximum of 80% of total costs by the European Commission. This maximum should not exceed 200,000 ECU per year. The table of statistics shows how MED-MEDIA operated in 1994 and 1995. From 1996, projects will be financed for a two-year period, with an evaluation at the end of the first year. As a result of this evaluation, the European Commission may decide not to continue co-financing certain projects, or to change the financial plan for the second year. For further general information on network financing, see Nos. 12 and 14 in the Question and Answer section.

	1994	1995
Financial allocation in million ECU	5.0	6.1
No. of proposals received	60	250
No. of networks selected	31	35
No. of network leaders from EU	27	27
No. of networks leaders from MP	4	8
Total no. of media bodies involved	202	206

Selection

Soon after the closing date of the relevant call for proposals, the European Commission will consult a group of experts made up of senior representatives of EU and Mediterranean partners media institutions (Committee of Experts). Selection of projects is based on compliance with the following objectives:

- the project helps to achieve the aims of the MED-MEDIA Programme,
- the project shows effective and balanced co-operation between EU and MP,
- the project is financially and technically feasible.

Overall, the Commission will try to achieve a geographical balance between projects.

The address for application forms and for details of the requirements for full proposals is:

The European Commission

MED-MEDIA

200 rue de la Loi

B - 1049 Brussels

Tel: +32 - 2 - 299 09 32

Fax: +32 - 2 - 299 02 04



MED-URBS

The MED-URBS Programme aims to help improve the quality of life in Mediterranean partners' cities and to help strengthen local democracy, by stimulating decentralised co-operation among local authorities in the European Union and the Mediterranean partners.

MED-URBS in action

MED-URBS sets up trans-Mediterranean networks of decentralised co-operation for the exchange of experience and know-how in the field of urban management and development. The networks comprise local authorities in the EU and its Mediterranean partners .

MED-URBS was launched in 1992. In 1995 a total of 48 networks were selected.

The priority areas of the programme are urban management, urban social and economic development, and urban environment.



Who can take part

MED-URBS is open to municipalities or local authorities of the EU and Mediterranean partners. A network in this programme consists of at least four partners, two from the MP and two from the EU. Mediterranean partners are especially encouraged to be project leaders.

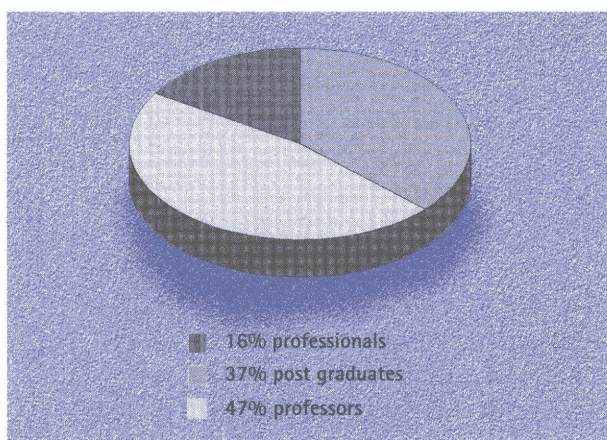
Projects must serve the needs of local communities in the MP and must be supervised and carried out by municipal staff. Projects may involve feasibility studies, training of technical municipal staff, newsletters and publications, preparation and use of data bases, creation of documentation centres, promotion of economic co-operation with other bodies. Some examples are:

- **INSER MED II:** to stimulate urban, social and economic development by organising training courses for local administrators from Mediterranean partners, training for unemployed youth and the creation of a handicraft centre.
- **INTEGRATED WATER MANAGEMENT:** to implement an integrated system for the purification of waste water and to develop a purification strategy favorising the socio-economic development of by-products by integrating them into local development.
- **LOT-NETWORK:** to organise, in the field of local taxation, management and organisation courses, cost accounting for public services with the aim of improving local financial resources.



MED-CAMPUS

The MED-CAMPUS Programme aims to foster co-operation in higher education by sponsoring collaborative projects involving campuses and enterprises on all sides of the Mediterranean. MED-CAMPUS also seeks to enhance understanding between the EU and its Mediterranean partners on a cultural level.



Type of student 1993-1994

MED-CAMPUS in action

MED-CAMPUS helps to create or strengthen networks of universities and other higher education institutions which will operate as channels for pooling experience and for transferring know-how from the EU to the Mediterranean partners and among these partners. For the academic year 1994/95 103 networks were selected.

There are three main types of MED-CAMPUS actions:

Action 1: "Training the trainers", which aims to improve the technique and methods of higher education staff in the MP. The priority fields for action here are environmental technology and legislation, energy conservation, new techno-

logies, management, language teaching and translating, mass media and communications, banking techniques and financial markets.

Example: Training the teachers in "Population-Development-Environment" in the Maghreb. The project aims at the development of training co-operation between European and Maghreb universities in current scientific problems and multi-disciplinary activities.

Action 2: Continuous training of managers (both administrative and technical managers) of public administration and private companies. The priority fields for action are the environment, tourism, higher education, sanitary and social services, local government and municipalities, overall quality in enterprises, small and medium-sized enterprises (SMEs). This type of training is aimed at professionals, but post-graduates in search of employment may also be eligible (up to 20% of all participants).

Example: Training of small business entrepreneurs in SME management. The project aims to set up interdisciplinary programmes to train entrepreneurs from Turkey, Israel and other Middle Eastern partners in the effective use of technology in SME management.

Action 3: Euro-Mediterranean post-university training. This action is aimed at young Masters graduates in the Mediterranean partners and offers a unique Masters-level course on problems specific to the Mediterranean in the fields of a) Euro-Mediterranean political, legal and socio-economic relations; b) environment; c) information and communications technologies.



MED-CAMPUS

Who can take part?

Action 1 networks require at least two universities from different Mediterranean partners and 2 universities from EU countries.

Action 2 networks require at least two universities from different Mediterranean partners and two universities from EU countries. At least one public or private enterprise must be part of the network.

Action 3 courses must be located in one of the Mediterranean partner countries. The universities participate as institutions, with at least three from MP and 3 from EU countries. The courses must be given by a multinational team of highly qualified teachers, who will be selected after a call for applications. This type of action will begin in 1996.

	1993	1994	1995
Financial allocation in million ECU	6.5	8.0	9.0
No. of proposals received	200	260	274
No. of networks selected	60	83	103
No. of network leaders from EU	45	57	61
No. of network leaders from MP	15	26	42
Total no. of institutions involved	200	250	293



Financing

The duration of networks in the MED-CAMPUS Programme follows the academic year. The projects will be financed up to 80% of total project cost. The EC's contribution is a maximum of 200,000 ECU for action 1 and 2 and 500,000 ECU for action 3. The table of statistics shows how MED-CAMPUS operated in its first three years. For further general information on network financing, see Nos. 12 and 14 in the Question and Answer section.

Selection

After the closing date of the relevant call for proposals, a Committee of Experts from the academic world will work with the European Commission in evaluating and selecting projects for participation in the MED-CAMPUS Programme. Selection of projects is based on the following criteria:

- the scientific and academic content of the project,
- coherence between the project's aims and the aims of the MED-CAMPUS Programme,
- the overall feasibility of the project.

The address for application forms and for details of the requirements for full proposals is:

The European Commission

MED-CAMPUS

200 rue de la Loi

B - 1049 Brussels

Tel: +32 - 2 - 295 56 43

Fax: +32 - 2 - 299 02 04





MED-INVEST

Small and medium-sized enterprises (SMEs) have proved to be the life blood of the European Union economy and promise to be crucial for the development of employment in industry and services in the MP.

The MED-INVEST Programme aims to foster the development of SMEs in the Mediterranean partners and provide them with the technical resources they need in order to be competitive and to establish and maintain contact with one another.

MED-INVEST in action

The pilot phase of MED-INVEST began in 1992 and has been extended to the end of 1995. The consolidated stage will be launched in 1996.

Currently, MED-INVEST comprises two sections:

Section A is concerned with extending European Union Programmes to the Mediterranean Partners by setting up professional contacts that are likely to result in co-operation schemes. The emphasis here is on partnership between enterprises.

The four actions involved at present are:

EUROPARTENARIAT MED-INVEST which allows southern and eastern Mediterranean SMEs to join the EUROPARTENARIAT launched in 1987. This promotes closer ties between business directors by means of targeted meetings. In the first two years, MED-INVEST enabled about 1,000 businesses in the MP to take part in these events. Meetings in 1995 are taking place in Dortmund and Lisbon.

MEDPARTENARIAT, a new initiative based on the EUROPARTENARIAT model. The difference is that the European SMEs go to the Mediterranean partners. Events have taken place and are planned in Turkey, Morocco and Israel, with the host countries preparing and coordinating the meetings.

MEDINTERPRISE extends the EU Interprise Programme. Several Mediterranean partners combine at regional or national level with the regions of at least two EU countries to open up the way for effective co-operation between companies. Companies involved in technology, commerce, finance and the environment are in the forefront, and already activities have taken place in Tunisia, Turkey, Morocco, Cyprus and Lebanon. Further activities are being prepared.

BC-NET and BRE: The BC-NET network (Business Co-operation Network) allows SMEs to identify other businesses seeking to cooperate on an inter-regional basis. Its database has now been extended to include some of the Mediterranean partners.

The BRE (Bureau de Rapprochement des Entreprises) is also based on a decentralised network of correspondents and seeks to bring businesses into contact with one another.

The BRE/BC-NET correspondents are now operating in most Mediterranean countries. MED-INVEST enables BRE and BC-NET systems to be set up in countries where they are not yet available, or to reinforce existing structures.





MED-INVEST

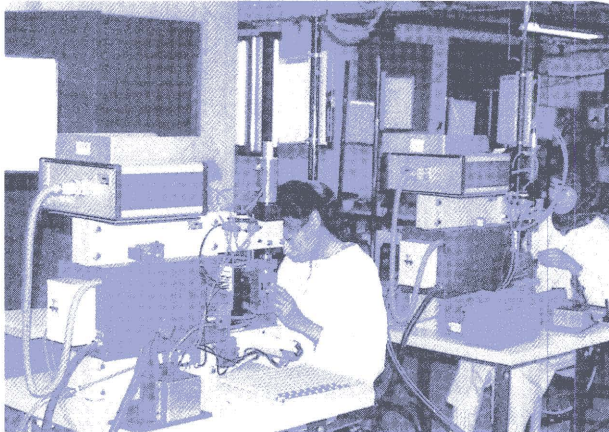
Section B involves experimental projects designed to provide instruments which support the growth and development of existing companies or the creation of new companies in the MP. In Section B there are currently seven pilot actions under way:

- 1 Access to Credit: specialist financial companies in the MP offer businesses new financial instruments and play an advisory financial role, supported by the European Investment Bank and the EC Investment Partners (ECIP) Programme.
- 2 Exports: MED-INVEST creates or strengthens specialist export management companies in the Mediterranean partners.
- 3 Service Centres: The MED-INVEST Service Centres operate locally and provide SMEs with high quality expertise in new technology, marketing, organisation, communication, human resources management, financial engineering, quality improvement, exports etc.
- 4 Development Agencies located in the MP help in the economic promotion of an area in order to attract investment and job creation schemes.
- 5 Business Creation: MED-INVEST organises project competitions with the collaboration of groups of businesses, professional bodies or development agencies located in the MP. In this way new businesses have access to advice and specific funding.
- 6 Grants and Training: top level business professionals and experts receive grants to set up planned instruments in a country other than their own. They will then be responsible for transposing and adapting this experience in their own country when the consolidated phase of MED-INVEST is established.
- 7 Audits and Studies: MED-INVEST funds specific actions which analyse needs, identify conditions, look for operators and define new projects as MED-INVEST approaches its consolidated phase.





MED-INVEST



The address for application forms and for details of the requirements for full proposals is:

The European Commission
MED-INVEST
200 rue de la Loi
B - 1049 Brussels
Tel: +32 - 2 - 295 56 43
Fax: +32 - 2 - 299 02 04

There has been great interest in the activities generated by MED-INVEST, and the level of response means that increased financial support for the programme will be needed in the consolidated phase from 1996.

Some changes are currently being made to the programme, with the aim of maintaining and extending the actions under Section A and diversifying the tools of Section B. These changes are connected with measures aimed at supporting the economic transition of the MP during the period of 1995-1996. Information will be available from the addresses given.

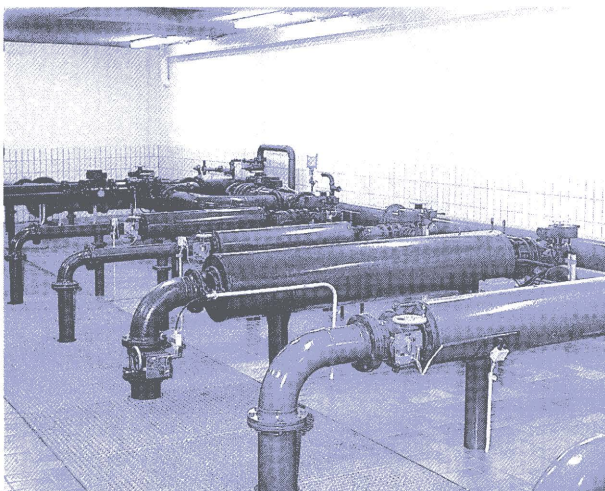


MED-TECHNO

The MED-TECHNO Programme aims to improve the application of efficient technologies in the MP countries by supporting co-operation and exchange of expertise between MP and European Union countries. At the same time, the programme seeks to stimulate co-operation between different MP facing similar challenges, encouraging them to develop common approaches.

MED-TECHNO 96

This initiative will focus on the treatment and reuse of municipal and/or industrial waste water as an additional source of water in the Mediterranean Partner. There will be emphasis on making use of renewable energy sources for this purpose. The technological development aspects of waste water treatment and re-use will take priority, but research elements may also be included in the proposed work. Each action should include technology assessment, socio-economic and prospective studies required for evaluating how successfully the proposed approach can be implemented.



Types of action in MED-TECHNO 96

Type 1: Joint Development Projects on laboratory or small pilot project scale, including:

- adaptation of existing technologies and development of innovative solutions;
- selection and training of appropriate personnel for the implementation and monitoring of the project;
- socio-economic and environmental assessment, examination of cost-benefits and application potential, evaluation of possible barriers (including national legislation) and consideration of long-term impact and consequences.

Joint Development Projects will run for a period of up to 36 months.

Type 2: Networks of scientists, technical experts, industries, public administration and authorities, non-governmental organisations and other institutions which are active in the field indicated (in research and development or practical application).

The networks should intensify the exchange and discussion of practical experience and scientific/technical know-how, with the aim of identifying approaches and technologies which could help solve specific problems targeted by the network. Major political or technical obstacles to the successful application of existing technologies are to be identified, and ways and means to overcome these obstacles are to be proposed.



MED-TECHNO

The networks should prepare specific joint activities and should have the potential to continue after the project support by the EU ends.

Networks will be supported for 12 to 24 months.

Type 1 or Type 2 may include training activities, with the trained personnel returning to their institution of origin and applying the acquired knowledge for the benefit of the project. Training periods should be limited to 12 months for Joint Projects and 6 months for networks.



Who can take part?

Type 1: Joint Development Projects require one independent team from a Mediterranean Partner and two independent teams established in two different EU countries.

Type 2: Networks require at least three independent teams from MP and at least three from EU countries. For general information on networks and networking, see the Question and Answer section, No. 5.

Financing

Type 1: Financial support from the EU will normally not exceed 50% of the total cost of a Joint Development Project. Universities and similar institutions in the EU and all types of institutions in the MP will be reimbursed on the basis of up to 100% of allowable additional costs. Private institutions in the EU may receive up to 50% of their total allowable costs. The EU contribution to a single project will not exceed 250,000 ECU per year; infrastructures will only be financed to a strict minimum.

Type 2: The EU will not participate in the costs of development and research carried out by the network participants, but will reimburse up to 100% of networking costs (that is, meetings, travel, scientific support, short term exchanges and training of scientific or technical personnel etc.).

The overall budget of a network (including support studies) should normally not exceed 100,000 ECU per year.



MED-TECHNO

Invitation to express interest in MED-TECHNO 96

All research and technological development institutions (public and private), municipalities and industries based in the EU or MP and concerned with the treatment of waste water from small or medium-sized municipalities (up to 250,000 inhabitants) and small and medium-sized enterprises (up to 500 employees and up to 10 million ECU annual turnover) were invited to express their interest in proposing a Joint Development Project or a network (see above, Types 1 and 2) in the field indicated. The participation of potential users of the results (e.g. municipal water authorities, small and medium-sized enterprises) based in the MP is particularly encouraged.

Important dates

The first call for proposals (see No. 6 in the Question and Answer section) for MED-TECHNO 96 will probably be issued by the end of 1995, followed by a time of about one month for the submission of proposals. The proposals will be evaluated under the responsibility and co-ordination of the European Commission, assisted by independent experts from EU and MP. Contract negotiation is scheduled to begin in January/February 1996, so that the first contract can probably begin in April 1996.

In the future the Commission intends to organise multi-annual MED-TECHNO activities and extend the sectors covered by the programme.

The address for application forms for expressions of interest and for details of the requirements for full proposals is:

The European Commission

MED-TECHNO

200 rue de la Loi

B - 1049 Brussels

Tel: +32 - 2 - 295 53 72

Fax: +32 - 2 - 299 02 04





MED-MIGRATION

The MED-MIGRATION Programme aims to promote cooperation and the development of partnership relations among local communities in the European Union, local communities in Mediterranean Partners and organisations concerned with migrants and migration.

MED-MIGRATION 96

This initiative will focus on the creation or strengthening of transmediterranean cooperation networks amongst EU and MP local communities and organisations involving migrants. There will be emphasis on the transfer of experience (both positive and negative) and know-how in coping with migration and on the promotion of migrants' potential for their place of origin and their destination. Challenges and problems of migration must be identified, but also the resources represented by migrants should be mobilised.



Fields of activity

Projects should involve one or more of the following fields:

- forming a company,
- migrants' savings,
- investments,
- social integration of young people,
- maternal and child health,
- housing rehabilitation,
- socio-administrative reception,
- improvement of the urban and everyday living environment,
- social integration of women,
- employment creation.

Other fields may however also be supported by the European Commission.

The projects should be organised as a network (for general information on networks and networking, see the Question and Answer section, No. 5) linking local EU communities and local MP communities and/or organisations concerned with migration.

Types of action

The types of action supported may be surveys or audits; knowledge transfer and exchange of experience; seminars or colloquiums; professional training; databases; publications; participation of the population in community life.

Who can take part

The MED-MIGRATION Programme is open to networks with at least two EU and one MP partner.





MED-MIGRATION

Financing

Each network selected is financed by the European Commission up to 80% of the total budget envisaged. If a proposal has a multi-annual work programme, its progress is reviewed by the European Commission annually and continuing support will depend on this review. For further general information on financing, see the Question and Answer section, Nos. 12 and 14.

Selection

Soon after the closing date of the relevant call for proposals the European Commission will consult with a Committee of Experts in the field of migration (from both EU and MP) and select the projects to be financed.

Selection of projects will be based on compliance with the following objectives:

- the project helps to achieve the aims of the MED-MIGRATION Programme,
- the project's results will have impact particularly in other MP,
- the project shows effective and balanced co-operation amongst the partners,
- the project is financially feasible.

Overall, the Commission will try to ensure a geographical balance between projects.

Useful address:

[The European Commission](#)

MED-MIGRATION

200 rue de la Loi

B - 1049 Brussels

Tel: +32 - 2 - 295 07 30

Fax: +32 - 2 - 299 02 04





FULL LIST OF ADDRESSES

Commission Offices

Algeria	16035 Alger, Hydra 7 rue Larbi Alik Fax: +213 - 2 - 69 19 47	Palestinian Territories	97200 Jerusalem 31 Nablus Road Fax: +972 - 2 - 28 16 21
Cyprus	137 Nicosia Irish Tower 8th Floor 2 Agapinor Str. P.O. Box 3480 Fax: + 357 - 2 - 36 89 26	Syria	Damascus Chakib Arslane Street Abou Roumaneh P.O. Box 11269 Fax: +936 - 11 - 42 06 83
Egypt	Cairo Zamalek 6, Ibn Zanki Street Fax: +20 - 2 - 340 03 85	Tunisia	1082 Tunis Cité el Mahrajene B.P. 143 21, Av. Jugurtha Fax: +216 - 1 - 78 82 01
Israel	64731 Tel Aviv The Tower 3, Daniel Frish Street Fax: +972 - 3 - 695 19 83	Turkey	06700 Ankara Köroglu Caddesi 88 4th floor Gazi Osman Pasa Fax: +90 - 4 - 137 79 40
Jordan	Amman Shmeisani P.O. Box 926.794 Fax: +962 - 6 - 68 67 46	ARTM	92-94, Square Eugene Plasky 1040 Brussels Belgium Tel: +32 - 2 - 736 00 11 Fax: +32 - 2 - 736 00 33
Lebanon	Jounieh Mont Liban Centre Saint Paul P.O. Box 1640 Fax: +961 - 9 - 93 71 54	MED-URBS:	Angela Jenkins
Malta	Ta'xbiex Malta GC Villa "The Vine" Ta'xbiex Seafront 51 Fax: +356 - 34 48 97	MED-CAMPUS:	Bernard De Groe
Morocco	Rabat 2 bis Av. de Meknès B.P. 1302 Fax: +212 - 7 - 76 11 56	MED-INVEST / MED-MEDIA:	Amira El Rass
		MED-MIGRATION:	Claire Terlinden



FULL LIST OF ADDRESSES

TAOs

MED-URBS / MED-MIGRATION:

CUD / CCRE
 Mohamed Boussraoui
 22, rue d'Alsace
 92300 Levallois Perret / France
 Tel: +33 - 1 - 47 39 83 25
 Fax: +33 - 1 - 42 70 37 99

MED-CAMPUS:

ISMERI EUROPA
 Federico Bussi
 39, Via G.G. Belli
 00193 Roma / Italy
 Tel: +39 - 6 - 321 22 46
 Fax: +39 - 6 - 321 33 06

MED-INVEST:

FERE Consultants
 Francois de Lavergne
 15, rue Barrault
 75013 Paris / France
 Tel: +33 - 1 - 45 65 41 79
 Fax: +33 - 1 - 45 80 01 72

MED-MEDIA:

TVE
 Mark Harvey
 Prince Albert Road
 London NW1 4RZ / UK
 Tel: +44 - 71 - 483 38 48
 Fax: +44 - 71 - 586 77 19

European Commission

DG IB-A-1
 200 rue de la Loi
 1049 Brussels
 Fax: +32 - 2 - 299 02 04

MED-URBS AND MED-TECHNO:

Mrs. Sandra Kramer
 Tel: +32 - 2 - 295 53 72

MED-MIGRATION:

Mrs. Myriam Pikaar
 Tel: +32 - 2 - 299 07 30

MED-CAMPUS AND MED-INVEST:

Mr. Jacques Giraudon
 Tel: +32 - 2 - 295 66 43

MED-MEDIA:

Mrs. Nicola Frank and Mrs. Judith Neisse
 Tel: +32 - 2 - 299 09 32

LIST OF ABBREVIATIONS

ARTM	Transmediterranean Networks Agency	EU	European Union
BC-NET	Business Cooperation Network	MP	Mediterranean Partner(s)
BRE	Bureau de Rapprochement des Entreprises	SMEs	Small and medium-sized enterprises
EC	European Commission	TAO	Technical Assistance Office

Author: Dr. R. A. Selle, Heidelberg

Translation: Wagner & Geßner, Heidelberg

Production: tecteam, Dortmund

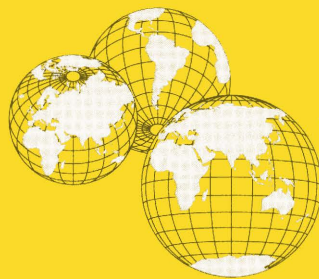
Printing: Druckerei Schmidt, Lünen

Date of manuscript: August 1995

Printed: October 1995

© Copyright: European Commission - DG IB - External Relations





European Commission
DG IB – External Relations
rue de la Loi 200
B-1049 Brussels