

COMMISSION OF THE EUROPEAN COMMUNITIES

COM(78) 6 final

Brussels, 16 January 1978

Modified
Proposal for a
COUNCIL REGULATION (EEC)

defining for 1978 measures for conservation and
management of fishery resources by the establishment
of quotas

(see COM(77) 524 final)

(presented by the Commission to the Council)

Modified

PROPOSAL FOR A
COUNCIL REGULATION (EEC)

defining for 1978 measures for conservation
and management of fishery resources by the
establishment of quotas.

THE COUNCIL OF THE EUROPEAN COMMUNITIES,

Having regard to the Treaty establishing the European Economic Community,

Having regard to Regulation (EEC) N° /77 from the Council, of
establishing a Community system for the conservation and management of fishery
resources(1)

Having regard to the proposal from the Commission,

Whereas the Community system for the conservation and management of fishery
resources provides for conservation measures which may include restrictions on
fishing in particular by limits on catches to ensure protection of fishing
grounds and stocks allowing a balanced exploitation of fishery resources in the
interests of both fishermen and consumers;

Whereas for each species for which it becomes necessary to limit catches, it is
therefore important to fix a total allowable catch for each stock or group of
stocks to preserve fishing possibilities in the years to come;

Whereas the overall catch that may be taken by the Member States has to be shared
equitably; that for the distribution it is therefore important to take into
account the vital needs and the economic development possibilities to coastal
populations particularly dependant on fishing and related industries;

HAS ADOPTED THIS REGULATION :

Article 1

The total allowable catch per stock or group of stocks and proportions
available to the Community in waters subject to the sovereignty or jurisdiction
of the Member States and to Community regulation on fishery shall be for 1978
as laid down in Annex I to this Regulation.

Article 2

Each Member State may fish the individual quotas laid down in Annex I
to this Regulation.

(1)

Article 3

This Regulation shall enter into force on

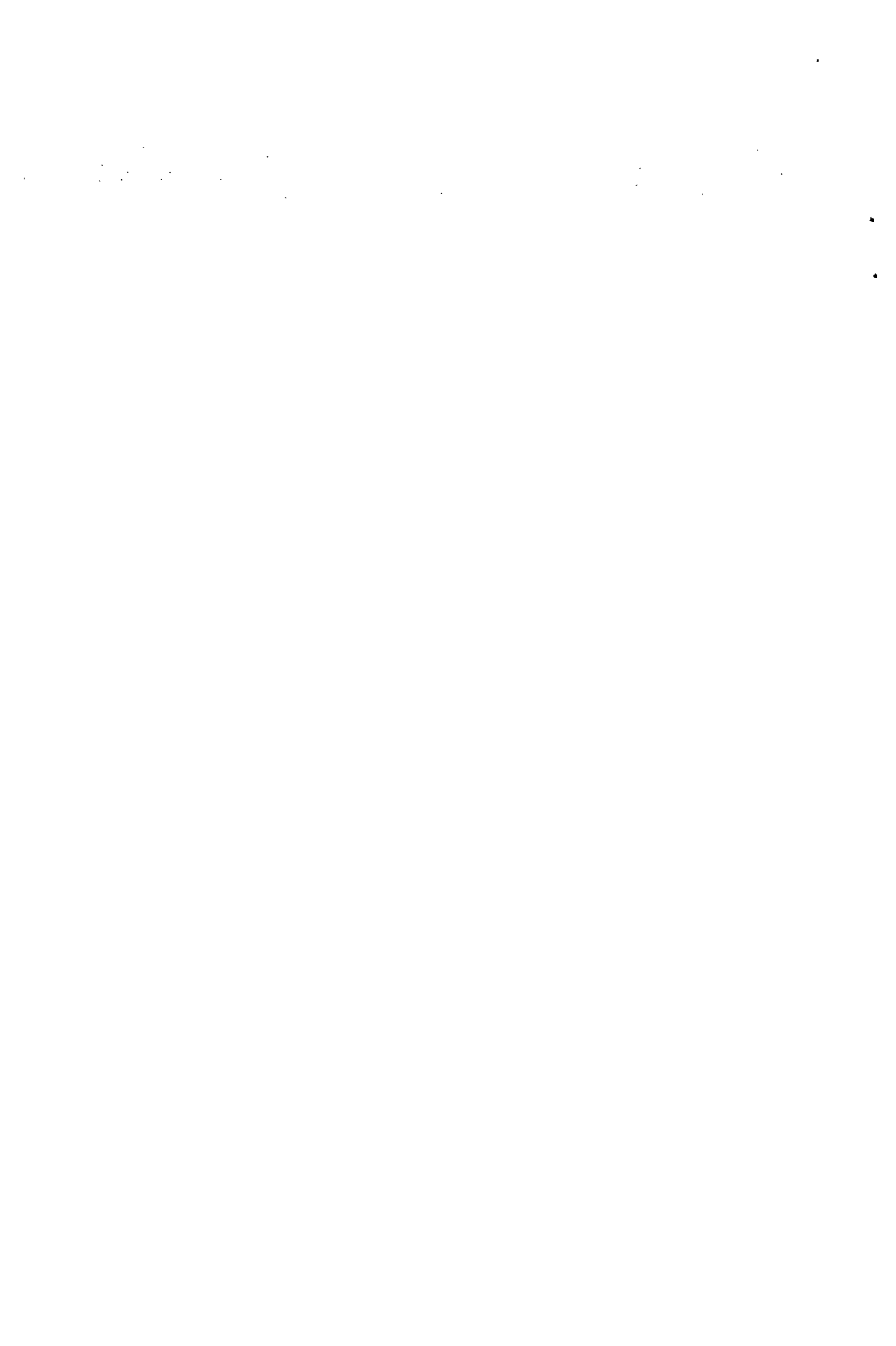
This Regulation shall be binding in its entirety and directly applicable in all Member States.

Done at Brussels,

For the Council,
The President.

COM(78) 6 final.

ANNEXE I (Revision 2)
16 January 1978



ANNEXE I

TAC OU CAPTURE TOTALE POUR 1976 - TACS

POUR 1978 PAR STOCK ET PAR SECTEUR - ALLOCATIONS AUX E.M. POUR 1978

Espèce	Division du CIEM	TAC ou capture *1 1976 (en tonnes)	TAC total 1978 (en tonnes)	Allocations aux E.M. 1978
Cabillaud	IV	236 000	220 000	197 944
Cabillaud	VI a	17 368 *1	19 000	18 958
Cabillaud	VI b	1 563 *1	1 299	118
Cabillaud	VII a	10 178 *1	8 600	8 600
Cabillaud	VII sauf VII a	8 383 *1	11 400	11 400
Cabillaud	III b, c, d	219 330 *1	444 000	60 400
Cabillaud	XIV	12 663 *1	0	0 *2
Cabillaud	ICNAF I	45 100	0	0 *2
Eglefin	IV	206 250 *1	106 000	89 610
Eglefin	VI a	18 755 *1	10 400	10 400
Eglefin	VI b	43 243 *1	2 000	1 995
Eglefin	VII	5 035 *1	8 000	8 000
Lieu noir	IV	266 313 *1	200 000	152 000
Lieu noir	VI a + VI b	40 778 *1	30 000	30 000
Lieu noir	VII	4 985 *1	4 880	4 880
Merlan	IV	189 000 *1	161 000	146 276
Merlan	VI a + VI b	24 115 *1	16 600	16 600
Merlan	VII	31 019 *1	30 000	30 000

* 1 : Niveau de capture (pas de TAC)

* 2 : Without prejudice to special allocations to be fished exclusively by Greenland coastal fishermen (3,000 tons in CIEM XIV and 25,000 tons in ICNAF I).

Espèce	Division du CIEM	TAC ou capture *1 1976 (en tonnes)	TAC total 1978 (en tonnes)	Allocations aux E.M. 1978
Plie	IV	99 900	95 000	91 795
Plie	VII d + VII e	3 340	3 100	3 044
Plie	VII f	640	400	394
Plie	VII a	4 150	4 000	4 000
Plie	VII b + VII c	142 *1	265	265
Plie	VII g - k	823 *1	928	928
Plie	VIII	185 *1	189	189
Plie	VII a	1 567 *1	1 681	1 681
Sole	IV	12 500	10 000	10 000
Sole	VII d + VII e	1 450	1 500	1 474
Sole	VII f	700	600	592
Sole	VII a	1 670	1 400	1 392
Sole	VII b,c	50 *1	50	50
Sole	VII g - k	1 018 *1	1 028	1 028
Sole	VIII	3 068 *1	3 068	3 068
Sole	VI a	50 *1	46	46
Maquereau	IV + III a	311 076 *1	190 000	30 604
Maquereau	VI, VII et VIII	477 721 *1	360 000	330 000
Sprat	IV	650 000	450 000	346 350
Sprat	III b, c, d	188 411 *1	184 000	11 000
Chinchard	IV+III a, VI, VII et VIII	272 570 *1	250 000	230 000
Merlu	IV, VI, VII, VIII	68 024	37 250	24 810

* 1 : Niveau de capture (pas de TAC)

Espèce	Division du CIEM	TAC ou capture *1 1976 (en tonnes)	TAC total 1978 (en tonnes)	Allocations aux E.M. 1978 *6
Tacaud norvégien	IV	500 000 *1	500 000	272 000
Merlan bleu (poutassou)	IV + VI	pas de données	600 000	500 000
Baudroie	VI, VII et VIII	28 780 *1	21 340	19 340
Cardine	VI, VII et VIII	22 916 *1	11 785	10 285
Lançon	IV	400 000 (environ)	500 000	420 000
Squid etc.	VI, VII, VII	-	-	5 800 *6
Rascasse	XIV	113 651 *1	90 000	43 000 *2 *7
Rascasse	ICNAF I	12 000 *1	13 000	11 500 *7
Flétan noir	XIV	20 000 *3	20 000	20 000
Flétan noir	ICNAF 0-I	20 000	25 000	24 500
Grenadier de roche	ICNAF 0-I	13 500	8 000	8 000
Crevettes	ICNAF 0-I	49 673 *1	40 000 *4	22 000
Crevettes	Guyane Française	*5	3 000	*5

* 1 : Niveau de capture (pas de TAC)

* 2 : 20,500 tons only allocated in 1978.

* 3 : 1975 catch.

* 4 : TAC is for area outside 12 miles from Greenland baselines; 18,000 tons of TAC is reserved exclusively for Greenland coastal fishermen. Only Greenland coastal fishermen may fish shrimps within 12 miles from Greenland baselines. Minimum landing size 40 mm.

* 5 : Not yet available.

* 6 : Where no TAC for 1978 is indicated the allocation figure is the expected catch level in 1978.

* 7 : A member State which enjoys a quota for this stock shall not be prevented from use of the quota because of an inevitable by-catch of cod for which it has no allocation. However, such by-catch shall not exceed 10% of the redfish catch.

Espèce	Division du CIEM	TAC ou capture *1 1976 (en tonnes)	TAC total 1978 (en tonnes)	Allocations aux E.M. 1978
Hareng	IV, VII d	160 000	0	0
Hareng	VII g, h, j, k (*2)(except Bantry Bay)	1/7/1975 - 30/6/76 25 000 1/7/1976 - 30/6/77 16 800	0	0
Hareng	VII j (Bantry Bay only)	?	2 500	2 500
Hareng	VII a (*3) (Mourne)	6 594 *1	0	0
Hareng	(*3) VII a (Manx + offshore Mourne)	11 573 *1	12 500	12 500
Hareng	VII b,c (*4)	20 372 *1	14 010	14 010
Hareng	VI a (*5)	136 000	64 000	54 600
Hareng	VII e, f	1 479 *1	0	0
Hareng	III b, c, d	372 442 *1	173 800	35 800

*1 : Indicates catch level (no TAC available)

*2 : Augmented by the zone delimited - to the north by latitude 52° 30' North
to the south by latitude 52° 00' North
to the west by the coast of Ireland
to the east by the coast of the United Kingdom

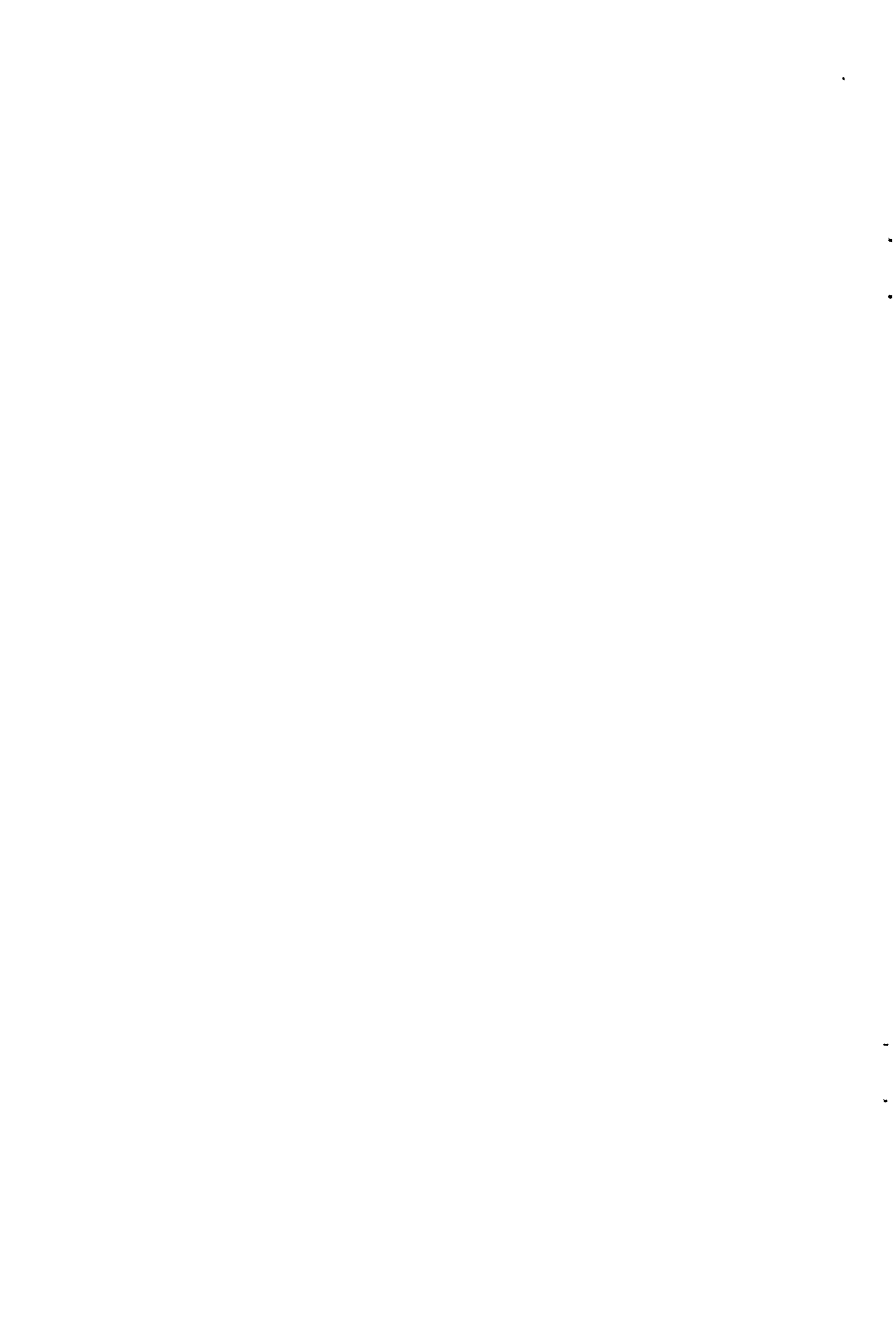
* 3: Diminished by the zone delimited under (2).

* 4: Except for Donegal Bay.

* 5: Donegal Bay included.

ANNEX 2 (Revision 2)

16 January 1978.



STOCK			Member State	Quota 1978
Species	Geographical Regions	ICES Division		
COD	North Sea	IV	Belgium	9 489
			Denmark	28 865
			Fed.Rep.Germany	26 282
			France	15 350
			Ireland	
			Italy	
			Luxembourg	
			Netherlands	22 138
			United Kingdom	95 820
			Available for Member States	
			EEC Total	197 944
COD	West of Scotland	VIa	Belgium	80
			Denmark	
			Fed.Rep.Germany	1
			France	6 293
			Ireland	1 905
			Italy	
			Luxembourg	
			Netherlands	12
			United Kingdom	10 667
			Available for Member States	
			EEC Total	18 958

STOCK			Member State	Quota 1978
Species	Geographical Regions	ICES Division		
COD	Rockall	VIb	Belgium	1
			Denmark	
			Fed. Rep. Germany	
			France	3
			Ireland	
			Italy	
			Luxembourg	
			Netherlands	
			United Kingdom	114
			Available for Member States	
			EEC Total	118
COD	Irish Sea	VII a	Belgium	135
			Denmark	
			Fed. Rep. Germany	
			France	1 013
			Ireland	5 795
			Italy	
			Luxembourg	
			Netherlands	45
			United Kingdom	1 613
			Available for Member States	
			EEC Total	8 600

STOCK			Member State	Quota 1978
Species	Geographical Regions	ICES Division		
COD	West-South Ireland Bristol Channel English Channel	VII except VII a	Belgium	414
			Denmark	2 090
			Fed. Rep. Germany	
			France	7 713
			Ireland	790
			Italy	
			Luxembourg	
			Netherlands	64
			United Kingdom	329
			Available for Member States	
			EEC Total	11 400
STOCK			Member State	Quota 1978
Species	Geographical Regions	ICES Division		
COD	Baltic	III b, c, d	Belgium	
			Denmark	43 800
			Fed. Rep. Germany	16 600
			France	
			Ireland	
			Italy	
			Luxembourg	
			Netherlands	
			United Kingdom	
			Available for Member States	
			EEC Total	60 400

STOCK			Member State	Quota 1978
Species	Geographical Regions	ICES Division		
COD	E. Greenland	XIV	Belgium	
			Denmark	* 3 000
			Fed.Rep.Germany	
			France	
			Ireland	
			Italy	
			Luxembourg	
			Netherlands	
			United Kingdom	
			Available for Member States	
			EEC Total	
			COD	W. Greenland
Denmark	* 25 000			
Fed.Rep.Germany				
France				
Ireland				
Italy				
Luxembourg				
Netherlands				
United Kingdom				
Available for Member States				
EEC Total	25 000			

* Special allocation to be fished exclusively by Greenland coastal fishermen.

STOCK			Member State	Quota 1978
Species	Geographical Regions	ICES Division		
HADDOCK	North Sea	IV	Belgium	1 145
			Denmark	11 666
			Fed.Rep.Germany	2 385
			France	3 848
			Ireland	
			Italy	
			Luxembourg	
			Netherlands	3 218
			United Kingdom	67 348
			Available for Member States	
			EEC Total	89 610
HADDOCK	West of Scotland	VI a	Belgium	24
			Denmark	7
			Fed.Rep.Germany	16
			France	1 612
			Ireland	1 000
			Italy	
			Luxembourg	
			Netherlands	16
			United Kingdom	7 725
			Available for Member States	
			EEC Total	10 400

STOCK			Member State	Quota 1978
Species	Geographical Regions	ICES Division		
HADDOCK	Rockall	VI b	Belgium	24
			Denmark	
			Fed. Rep. Germany	
			France	3
			Ireland	
			Italy	
			Luxembourg	
			Netherlands	
			United Kingdom	1 968
			Available for Member States	
			EEC Total	1 995
			HADDOCK	Irish Sea, Bristol Channel, West and South Ireland, English Channel
Denmark				
Fed. Rep. Germany	4			
France	6 707			
Ireland	1 010			
Italy				
Luxembourg				
Netherlands	22			
United Kingdom	196			
Available for Member States				
EEC Total	8 000			

STOCK			Member State	Quota 1978
Species	Geographical Regions	ICES Division		
SAITHE	North Sea	IV	Belgium	200
			Denmark	22 000
			Fed.Rep.Germany	56 300
			France	27 000
			Ireland	
			Italy	
			Luxembourg	
			Netherlands	7 000
			United Kingdom	39 500
			Available for Member States	
			EEC Total	152 000
SAITHE	West of Scotland and Rockall	VI a + b	Belgium	60
			Denmark	1
			Fed.Rep.Germany	324
			France	18 528
			Ireland	781
			Italy	
			Luxembourg	
			Netherlands	347
			United Kingdom	9 959
			Available for Member States	
			EEC Total	30 000

STOCK			Member State	Quota 1978
Species	Geographical Regions	ICES Division		
SAITHE	Irish Sea Bristol Channel West and South Ireland English Channel	VII	Belgium	28
			Denmark	4
			Fed. Rep. Germany	
			France	2 608
			Ireland	1 742
			Italy	
			Luxembourg	
			Netherlands	94
			United Kingdom	405
			Available for Member States	
			EEC Total	4 880
			Belgium	
			Denmark	
			Fed. Rep. Germany	
			France	
			Ireland	
			Italy	
			Luxembourg	
			Netherlands	
			United Kingdom	
			Available for Member States	
			EEC Total	

STOCK			Member State	Quota 1978
Species	Geographical Regions	ICES Division		
WHITING	North Sea	IV	Belgium	3 406
			Denmark	39 473
			Fed.Rep.Germany	2 518
			France	24 857
			Ireland	
			Italy	
			Luxembourg	
			Netherlands	12 732
			United Kingdom	63 290
			Available for Member States	
			EEC Total	146 276
WHITING	West of Scotland and Rockall	VI a + b	Belgium	9
			Denmark	
			Fed.Rep.Germany	1
			France	2 196
			Ireland	4 056
			Italy	
			Luxembourg	
			Netherlands	153
			United Kingdom	10 185
			Available for Member States	
			EEC Total	16 600

STOCK			Member State	Quota 1978
Species	Geographical Regions	ICES Division		
WHITING	Irish Sea, Bristol Channel, West-South Ireland, English Channel	VII	Belgium	291
			Denmark	15
			Fed.Rep.Germany	
			France	14 184
			Ireland	10 847
			Italy	
			Luxembourg	
			Netherlands	141
			United Kingdom	4 522
			Available for Member States	
			EEC Total	30 000
			Belgium	
			Denmark	
			Fed.Rep.Germany	
			France	
			Ireland	
			Italy	
			Luxembourg	
			Netherlands	
			United Kingdom	
			Available for Member States	
			EEC Total	

STOCK			Member State	Quota 1978
Species	Geographical Regions	ICES Division		
PLAICE	North Sea	IV	Belgium	4 469
			Denmark	18 236
			Fed.Rep.Germany	4 469
			France	1 997
			Ireland	
			Italy	
			Luxembourg	
			Netherlands	37 805
			United Kingdom	24 819
			Available for Member States	
			EEC Total	91 795
PLAICE	English Channel	VII d, e	Belgium	140
			Denmark	
			Fed.Rep.Germany	
			France	1 745
			Ireland	
			Italy	
			Luxembourg	
			Netherlands	
			United Kingdom	1 159
			Available for Member States	
			EEC Total	3 044

STOCK			Member State	Quota 1978
Species	Geographical Regions	ICES Division		
PLAICE	Bristol Channel	VII f	Belgium	63
			Denmark	
			Fed.Rep.Germany	
			France	81
			Ireland	
			Italy	
			Luxembourg	
			Netherlands	
			United Kingdom	250
			Available for Member States	
			EEC Total	394
PLAICE	Irish Sea	VII a	Belgium	140
			Denmark	
			Fed.Rep.Germany	
			France	130
			Ireland	1 476
			Italy	
			Luxembourg	
			Netherlands	76
			United Kingdom	2 178
			Available for Member States	
			EEC Total	4 000

STOCK			Member State	Quota 1978
Species	Geographical Regions	ICES Division		
PLAICE	West Ireland	VII b,c	Belgium	
			Denmark	
			Fed.Rep.Germany	
			France	9
			Ireland	256
			Italy ¹	
			Luxembourg	
			Netherlands	
			United Kingdom	
			Available for Member States	
			EEC Total	265
PLAICE	South Ireland	VII g - k	Belgium	248
			Denmark	-
			Fed.Rep.Germany	-
			France	277
			Ireland	300
			Italy	
			Luxembourg	
			Netherlands	87
			United Kingdom	16
			Available for Member States	
			EEC Total	928

STOCK			Member State	Quota 1978
Species	Geographical Regions	ICES Division		
PLAICE	Bay of Biscay	VIII	Belgium	4
			Denmark	
			Fed.Rep.Germany	
			France	184
			Ireland	
			Italy	
			Luxembourg	
			Netherlands	1
			United Kingdom	
			Available for Member States	
			EEC Total	189
PLAICE	West of Scotland	VI a	Belgium	1
			Denmark	
			Fed.Rep.Germany	
			France	44
			Ireland	548
			Italy	
			Luxembourg	
			Netherlands	
			United Kingdom	1 088
			Available for Member States	
			EEC Total	1 681

STOCK			Member State	Quota 1978
Species	Geographical Regions	ICES Division		
SOLE	North Sea	IV	Belgium	960
			Denmark	384
			Fed.Rep.Germany	320
			France	224
			Ireland	
			Italy	
			Luxembourg	
			Netherlands	7 360
			United Kingdom	752
			Available for Member States	
			EEC Total	10 000
SOLE	English Channel	VII d,e	Belgium	155
			Denmark	
			Fed.Rep.Germany	
			France	900
			Ireland	
			Italy	
			Luxembourg	
			Netherlands	
			United Kingdom	419
			Available for Member States	
			EEC Total	1 474

STOCK			Member State	Quota 1978
Species	Geographical Regions	ICES Division		
SOLE	Bristol Channel	VII f	Belgium	343
			Denmark	
			Fed.Rep.Germany	
			France	86
			Ireland	
			Italy	
			Luxembourg	
			Netherlands	
			United Kingdom	163
			Available for Member States	
			EEC Total	592
SOLE	Irish Sea	VII a	Belgium	624
			Denmark	
			Fed.Rep.Germany	
			France	130
			Ireland	40
			Italy	
			Luxembourg	
			Netherlands	208
			United Kingdom	390
			Available for Member States	
			EEC Total	1 392

STOCK			Member State	Quota 1978
Species	Geographical Regions	ICES Division		
SOLE	West Ireland	VII b,c	Belgium	
			Denmark	
			Fed.Rep.Germany	
			France	18
			Ireland	32
			Italy	
			Luxembourg	
			Netherlands	
			United Kingdom	
			Available for Member States	
			EEC Total	50
SOLE	South Ireland	VII g, k	Belgium	638
			Denmark	
			Fed.Rep.Germany	
			France	184
			Ireland	162
			Italy	
			Luxembourg	
			Netherlands	33
			United Kingdom	11
			Available for Member States	
			EEC Total	1 028

STOCK			Member State	Quota 1978
Species	Geographical Regions	ICES Division		
SOLE	Bay of Biscay	VIII	Belgium	26
			Denmark	
			Fed.Rep.Germany	
			France	2 968
			Ireland	
			Italy	
			Luxembourg	
			Netherlands	74
			United Kingdom	
			Available for Member States	
			EEC Total	3 068
SOLE	West of Scotland	VI a	Belgium	
			Denmark	
			Fed.Rep.Germany	
			France	
			Ireland	32
			Italy	
			Luxembourg	
			Netherlands	
			United Kingdom	14
			Available for Member States	
			EEC Total	46

STOCK			Member State	Quota 1978
Species	Geographical Regions	ICES Division		
MACKEREL	North Sea	IV + III a	Belgium	354
			Denmark	23 247
			Fed.Rep.Germany	346
			France	3 139
			Ireland	
			Italy	
			Luxembourg	
			Netherlands	2 534
			United Kingdom	984
			Available for Member States	
			EEC Total	30 604
MACKEREL	Western West of Scotland Irish Sea Bristol Channel West and South Ireland Bay of Biscay	VI + VII + VIII	Belgium	17
			Denmark	20 000
			Fed.Rep.Germany	25 000
			France	56 134
			Ireland	25 000
			Italy	
			Luxembourg	
			Netherlands	30 000
			United Kingdom	173 849
			Available for Member States	
			EEC Total	330 000

STOCK			Member State	Quota 1978
Species	Geographical Regions	ICES Division		
Sprat	North Sea	IV	Belgium	100
			Denmark	186 344
			Fed.Rep.Germany	24 559
			France	100
			Ireland	
			Italy	
			Luxembourg	
			Netherlands	1 500
			United Kingdom	133 747
			Available for Member States	
			EEC Total	346 350
Sprat	Baltic	III b,c,d	Belgium	
			Denmark	8 200
			Fed.Rep.Germany	2 800
			France	
			Ireland	
			Italy	
			Luxembourg	
			Netherlands	
			United Kingdom	
			Available for Member States	
			EEC Total	11 000

STOCK			Member State	Quota 1978
Species	Geographical Regions	ICES Division		
Horse Mackerel	North Sea, West Scotland, Irish Sea Bristol Channel West and South Ireland Bay of Biscay	IV, VI, VII + VIII	Belgium	
			Denmark	
			Fed.Rep.Germany	
			France	
			Ireland	
			Italy	
			Luxembourg	
			Netherlands	
			United Kingdom	100 000
			Available for Member States	130 000
			EEC Total	230 000
			Belgium	
			Denmark	
			Fed.Rep.Germany	
			France	
			Ireland	
			Italy	
			Luxembourg	
			Netherlands	
			United Kingdom	
			Available for Member States	
			EEC Total	

STOCK			Member State	Quota 1978
Species	Geographical Regions	ICES Division		
Hake	North Sea West of Scotland Irish Sea Bristol Channel West - South Ireland Bay of Biscay	IV, VI VII, VIII	Belgium	344
			Denmark	933
			Fed.Rep.Germany	81
			France	19552
			Ireland	500
			Italy ¹	1000
			Luxembourg	
			Netherlands	66
			United Kingdom	2334
			Available for Member States	
			EEC Total	24810
			Denmark	
			Fed.Rep.Germany	
			France	
			Ireland	
			Italy	
			Luxembourg	
			Netherlands	
			United Kingdom	
			Available for Member States	
			EEC Total	

STOCK			Member State	Quota 1978
Species	Geographical Regions	ICES Division		
NORWAY POUT	North Sea		Belgium	-
			Denmark	252 000
			Fed.Rep.Germany	-
			France	-
			Ireland	-
			Italy	-
			Luxembourg	-
			Netherlands	-
			United Kingdom	20 000
			Available for Member States	-
			EEC Total	272 000
			Belgium	-
			Denmark	-
			Fed.Rep.Germany	-
			France	-
			Ireland	-
			Italy	-
			Luxembourg	-
			Netherlands	-
			United Kingdom	-
			Available for Member States	-
			EEC Total	-

STOCK			Member State	Quota 1978
Species	Geographical Regions	ICES Division		
Blue Whiting	North Sea	IV, VI	Belgium	
			Denmark	
			Fed.Rep.Germany	
			France	
			Ireland	
			Italy	
			Luxembourg	
			Netherlands	
			United Kingdom	
			Available for Member States	500 000
			EEC Total	500 000
			Belgium	
			Denmark	
			Fed.Rep.Germany	
			France	
			Ireland	
			Italy	
			Luxembourg	
			Netherlands	
			United Kingdom	
			Available for Member States	
			EEC Total	

STOCK			Member State	Quota 1978
Species	Geographical Regions	ICES Division		
Monk	West of Scotland, Irish Sea, English Channel, West and South Ireland Bay of Biscay	VI, VII, VIII	Belgium	555
			Denmark	-
			Fed.Rep.Germany	6
			France	12 669
			Ireland	100
			Italy	-
			Luxembourg	-
			Netherlands	27
			United Kingdom	5 983
			Available for Member States	-
			EEC Total	19340
			Denmark	-
			Fed.Rep.Germany	-
			France	-
			Ireland	-
			Italy	-
			Luxembourg	-
			Netherlands	-
			United Kingdom	-
			Available for Member States	-
			EEC Total	-

STOCK			Member State	Quota 1978
Species	Geographical Regions	ICES Division		
Megrim	West of Scotland, Irish Sea, British Channel West, South Ireland, Bay of Biscay	VI + VII + VIII	Belgium	153
			Denmark	-
			Fed.Rep.Germany	-
			France	7.324
			Ireland	500
			Italy	-
			Luxembourg	-
			Netherlands	2
			United Kingdom	2.306
			Available for Member States	-
			EEC Total	10.285
			Belgium	
			Denmark	
			Fed.Rep.Germany	
			France	
			Ireland	
			Italy	
			Luxembourg	
			Netherlands	
			United Kingdom	
			Available for Member States	
			EEC Total	

STOCK			Member State	Quota 1978
Species	Geographical Regions	ICES Division		
SANDEEL	North Sea	IV	Belgium	
			Denmark	400.000
			Fed.Rep.Germany	
			France	
			Ireland	
			Italy	
			Luxembourg	
			Netherlands	
			United Kingdom	20.000
			Available for Member States	
			EEC Total	420.000
			Belgium	
			Denmark	
			Fed.Rep.Germany	
			France	
			Ireland	
			Italy	
			Luxembourg	
			Netherlands	
			United Kingdom	
			Available for Member States	
			EEC Total	

STOCK			Member State	Quota 1978		
Species	Geographical Regions	ICES Division				
Squid poulpe cuttle fish	West of Scotland Irish Sea English Channel, West and South Ireland, Bay of Biscay	VI, VII, VIII	Belgium			
			Denmark			
			Fed. Rep. Germany			
			France			
			Ireland			
			Italy	5.800*		
			Luxembourg			
			Netherlands			
			United Kingdom			
			Available for Member States			
			EEC Total	5.800		
					Belgium	
					Denmark	
		Fed. Rep. Germany				
		France				
		Ireland				
		Italy				
		Luxembourg				
		Netherlands				
		United Kingdom				
		Available for Member States				
		EEC Total				

* Expected catch
Level in 1978

STOCK			Member State	Quota 1973
Species	Geographical Regions	ICES Division		
Redfish	E. Greenland	XIV	Belgium	
			Denmark	* 500
			Fed. Rep. Germany	20 000
			France	
			Ireland	
			Italy ¹	
			Luxembourg	
			Netherlands	
			United Kingdom	
			Available for Member States	22 500
			EEC Total	43 000
Redfish	W. Greenland	ICNAF 0 - 1	Belgium	
			Denmark	* 5 000
			Fed. Rep. Germany	6 500
			France	
			Ireland	
			Italy	
			Luxembourg	
			Netherlands	
			United Kingdom	3
			Available for Member States	
			EEC Total	11 500

* To be fished exclusively by Greenland Coastal fishermen.

STOCK			Member State	Quota 1978
Species	Geographical Regions	ICES Division		
Greenland Halibut	E. Greenland	XIV	Belgium	-
			Denmark	-
			Fed.Rep.Germany	20 000
			France	-
			Ireland	-
			Italy	-
			Luxembourg	-
			Netherlands	-
			United Kingdom	-
			Available for Member States	-
			EEC Total	20 000
Greenland Halibut	W. Greenland	ICNAF 0 - 1	Belgium	-
			Denmark	* 8 500
			Fed.Rep.Germany	16 000
			France	-
			Ireland	-
			Italy	-
			Luxembourg	-
			Netherlands	-
			United Kingdom	-
			Available for Member States	-
			EEC Total	24 500

* To be fished exclusively by Greenland Coastal fish.

STOCK			Member State	Quota 1978
Species	Geographical Regions	ICES Division		
Roundnose Grenadier	W. Greenland	ICNAF 0 - 1	Belgium	
			Denmark	* 2 000
			Fed.Rep.Germany	6 000
			France	
			Ireland	
			Italy	
			Luxembourg	
			Netherlands	
			United Kingdom	
			Available for Member States	
			EEC Total	8 000
			Belgium	-
			Denmark	
			Fed.Rep.Germany	
			France	
			Ireland	
			Italy	
			Luxembourg	
			Netherlands	
			United Kingdom	
			Available for Member States	
			EEC Total	-

* To be fished exclusively by Greenland Coastal fishermen.

STOCK			Member State	Quota 1978
Species	Geographical Regions	ICES Division		
Shrimps	W. Greenland	ICNAF 0 - 1	Belgium	
			Denmark	18 000 3 000)
			Fed.Rep.Germany	
			France	1 000
			Ireland	
			Italy	
			Luxembourg	
			Netherlands	
			United Kingdom	
			Available for Member States	
			EEC Total	21 000
Shrimps	French Guyana		Belgium	
			Denmark	
			Fed.Rep.Germany	
			France	
			Ireland	
			Italy	
			Luxembourg	
			Netherlands	
			United Kingdom	
			Available for Member States	Information not yet available
			EEC Total	

* To be fished exclusively by Greenland Coastal fishermen

STOCK			Member State	Quota 1978
Species	Geographical Regions	ICES Division		
Herring	North Sea Eastern English Channel	IV, VIId	Belgium	
			Denmark	
			Fed.Rep.Germany	
			France	
			Ireland	
			Italy	
			Luxembourg	
			Netherlands	
			United Kingdom	
			Available for Member States	-
EEC Total	0			
Herring	Celtic Sea	VII g-h * (but Bantry Bay excluded)	Belgium	-
			Denmark	-
			Fed.Rep.Germany	-
			France	-
			Ireland	-
			Italy	-
			Luxembourg	
			Netherlands	-
			United Kingdom	-
			Available for Member States	-
EEC Total	0			

* Augmented by zone bounded : - to north by latitude 52°30' N;
- to south by latitude 52°00' N; - to west by coast of Ireland; --
- to east by coast of U.K.

STOCK			Member State	Quota 1978
Species	Geographical Regions	ICES Division		
Herring	Southwest Ireland	VII j (Bantry Bay only)	Belgium	-
			Denmark	-
			Fed.Rep.Germany	-
			France	-
			Ireland	2 500
			Italy	-
			Luxembourg	-
			Netherlands	-
			United Kingdom	-
			Available for Member States	2 500
			EEC Total	
Herring	Irish Sea (Mourne Stock)	VIIa ^{*1}	Belgium	-
			Denmark	-
			Fed.Rep.Germany	-
			France	-
			Ireland	-
			Italy	-
			Luxembourg	-
			Netherlands	-
			United Kingdom	-
			Available for Member States	-
			EEC Total	0

*1 VIIa is diminished by the area added to the Celtic Sea as on page 39. Reference is to Mourne stock within 12 miles of coast of Ireland and Northern Ireland.

STOCK			Member State	Quota 1978
Species	Geographical Regions	ICES Division		
Herring	Irish Sea Manx + Mourne (offshore)	VIIa ‡	Belgium	-
			Denmark	-
			Fed.Rep.Germany	-
			France	366
			Ireland	2 146
			Italy	-
			Luxembourg	-
			Netherlands	715
			United Kingdom	9 273
			Available for Member States	-
			EEC Total	12 500
Herring	West Ireland (except Donegal Bay)	VII b,c	Belgium	-
			Denmark	-
			Fed.Rep.Germany	10
			France	-
			Ireland	10 000
			Italy	-
			Luxembourg	-
			Netherlands	4 000
			United Kingdom	-
			Available for Member States	-
			EEC Total	14 010

‡ VIIa is diminished by the area added to the Celtic Sea as on page 39. Reference is to herring caught round the Isle of Man, and in summer between the Isle of Man and the coast of Northern Ireland outside 12 miles.

STOCK			Member State	Quota 1978
Species	Geographical Regions	ICES Division		
Herring	West of Scotland (Donegal Sea included)	VI a	Belgium	-
			Denmark	200
			Fed.Rep.Germany	3 700
			France	1 200
			Ireland	7 500
			Italy	-
			Luxembourg	
			Netherlands	3 000
			United Kingdom	39 000
			Available for Member States	-
			EEC Total	54 600
Herring	Western English Channel Bristol Channel	VII e,f	Belgium	
			Denmark	
			Fed.Rep.Germany	
			France	
			Ireland	
			Italy	
			Luxembourg	
			Netherlands	
			United Kingdom	
			Available for Member States	
			EEC Total	0

STOCK			Member State	Quota 1978
Species	Geographical Regions	ICES Division		
Herring	Baltic	III b,c,d	Belgium	-
			Denmark	20 200
			Fed.Rep.Germany	15 600
			France	-
			Ireland	-
			Italy	-
			Luxembourg	-
			Netherlands	-
			United Kingdom	-
			Available for Member States	-
			EEC Total	35 800

BACKGROUND DOCUMENTATION

Revision 2 - 16 January 1978



Espèce COD

STOCK

Région IV

Simulation de calcul de quotas de captures

Anciens quotas 78 Ajustement Nouveaux quotas 78 TAC = 220 000

	Anciens quotas 78	Ajustement	Nouveaux quotas 78				
Belgique	13 489	- 4 000	9 489				
Danemark	36 865	- 8 000	28 865				
Allemagne	22 282	+ 4 000	26 282				
France	15 350		15 350				
Irlande							
Italie							
Luxembourg							
Pays-Bas	24 138	- 2 000	22 138				
Royaume-Uni	85 820	+ 10 000	95 820				
Total des EM de la Communauté	197 944	0	197 944				
Féroës							
Finlande							
Islande							
Norvège							
Portugal							
Espagne							
Suède							
Autres							
Total des Pays tiers	22 056		22 056				
TOTAL	220 000		220 000				

Special Needs

NORTH BRITAIN
IRELAND

STOCK

Espèce : COD
Région : VI a

Simulation de calcul de quotas de captures

TAC = 19 000

	1976	APPLY 1978 TAC	IRELAND 1,67x1975	1978 QUOTA		
Belgique	71	78	76	80		
Danemark						
Allemagne	1	1	1	1		
France	5 611	6 138	5 985	6 293		
Irlande	1 341	1 467	1 905	1 905		
Italie						
Pays-Bas	11	12	12	12		
Royaume-Uni 1	10 230	11 191	10 911	10 667		
2						
E.H. de la Commun.	17 265	18 887	18 890	18 958		
<u>Reciprocal</u> <u>3rd Countries</u>						
1						
2						
3						
4						
<u>Sub Total</u>	39	43	42	42		
<u>Non Recip.</u> <u>Countries</u>						
1						
2						
3						
4						
<u>Sub Total</u>	64	70	68			
TOTAL	17 368	19 000	19 000	19 000		

Special Needs
STOCK

Espèce :
 Région :

Simulation de calcul de quotas de captures

TAC = 1 299

	1976 catch	1978 quota					
Belgique	1	1					
Danemark							
Allemagne							
France	4	3					
Irlande							
Italie							
Pays-Bas							
Royaume-Uni 1	138	114					
2							
<u>E.M. de la Commun.</u>	143	118					
<u>Reciprocal</u>							
<u>3rd Countries</u>							
1							
2							
3							
4							
<u>Sub Total</u>	22	18					
<u>Non Recip.</u>							
<u>Countries</u>							
1							
2							
3							
4							
<u>Sub Total</u>	1 398	1 163					
TOTAL	1 563	1 299					

Special Needs

Ireland

STOCK

Espèce : Cod
 Région : VII^a

Simulation de calcul de quotas de captures

TAC = 8 600

	1976 catch	1975 Irish catch	1978 quota			
Belgique	257		135			
Danemark						
Allemagne						
France	1938		1013			
Irlande	4815	3477	5795			
Italie						
Pays-Bas	87		45			
Royaume-Uni 1	3081		1613			
2						
E.M. de la Commun.	10178		8600			
<u>Reciprocal</u>						
<u>3rd Countries</u>						
1						
2						
3						
4						
<u>Sub Total</u>						
<u>Non Recip.</u>						
<u>Countries</u>						
1						
2						
3						
4						
<u>Sub Total</u>						
TOTAL	10 178		8600			

Special Needs

Ireland

STOCK

Espèce :

COD

Région :

VII except VII^aSimulation de calcul de quotas de captures

TAC = 11 400

	1976 capture	1975 capture d'Irlande	1978 quota			
Belgique	296		414			
Danemark	1 506		2 090			
Allemagne						
France	5 544		7 713			
Irlande	506	474	790			
Italie						
Pays-Bas	48		64			
Royaume-Uni 1	234		329			
2						
E.M. de la Commun.	8 134		11 400			
<u>Reciprocal</u> <u>3rd Countries</u>						
<u>1</u>						
<u>2</u>						
<u>3</u>						
<u>4</u>						
<u>Sub Total</u>						
<u>Non Recip.</u> <u>Countries</u>						
<u>1</u>	40					
<u>2</u>	208					
<u>3</u>						
<u>4</u>						
<u>Sub Total</u>	248					
TOTAL	8 382		11 400			

Espèce COD

6.

STOCK

Région III b, c, d

Simulation de calcul de quotas de captures

Quota
1978

i							
Belgique							
Danemark	43 800						
Allemagne	16 600						
France							
Irlande							
Italie							
Luxembourg							
Pays-Bas							
Royaume-Uni							
Total des EM de la Communauté	60 400						
Féroës							
Finlande							
Islande							
Norvège							
Portugal							
Espagne							
Suède							
Autres							
Total des Pays tiers							
TOTAL							

Espèce COD

7.

STOCK

Région XIV

Simulation de calcul de quotas de captures

TAC : 0

Belgique							
Danemark	*3 000						
Allemagne							
France							
Irlande							
Italie							
Luxembourg							
Pays-Bas							
Royaume-Uni							
Total des EM de la Communauté							
Féroës							
Finlande							
Islande							
Norvège							
Portugal							
Espagne							
Suède							
Autres							
Total des Pays tiers							
TOTAL							

* Special allocation to be fished exclusively by Greenland coastal fishermen.

Espèce CODSTOCKRégion ICNAF ISimulation de calcul de quotas de captures

TAC : 0

Belgique							
Danemark	* 25 000						
Allemagne							
France							
Irlande							
Italie							
Luxembourg							
Pays-Bas							
Royaume-Uni							
Total des EM de la Communauté							
Féroës							
Finlande							
Islande							
Norvège							
Portugal							
Espagne							
Suède							
Autres							
Total des Pays tiers							
TOTAL							

* Special allocation to be fished exclusively by Greenland coastal fishermen.

Espèce HADDOCKSTOCKRégion IVSimulation de calcul de quotas de captures

Anciens quotas 78 Ajustement Nouveaux quotas 78 TAC = 106 000

	Anciens quotas 78	Ajustement	Nouveaux quotas 78				
Belgique	1 145		1 145				
Danemark	19 666	- 8 000	11 666				
Allemagne	2 385		2 385				
France	3 848		3 848				
Irlande							
Italie							
Luxembourg							
Pays-Bas	5 218	- 2 000	3 218				
Royaume-Uni	57 348	+ 10 000	67 348				
Total des EM de la Communauté	89 610	0	89 610				
Fércès							
Finlande							
Islande							
Norvège							
Portugal							
Espagne							
Suede							
Autres							
Total des Pays tiers	16 390		16 390				
TOTAL	106 000		106 000				

Special Needs

NORTH BRITAIN
IRELAND

STOCK

1 } Espèce : HADDOCK

} Région : VI a

Simulation de calcul de quotas de captures

TAC = 10 400

	1976 CATCH	APPLY 1978 TAC	IRELAND 1.67x1975	1978 QUOTAS			
Belgique	45	25	24	24			
Danemark	13	7	7	7			
Allemagne	30	17	16	16			
France	3 026	1 678	1 612	1612			
Irlande	1 115	618	1 000	1000			
Italie							
Pays-Bas	30	17	16	16			
Royaume-Uni 1	13 963	7 743	7 441	7725			
2							
E.H. de la Commun.	18 222	10 105	10 116	10400			
<u>Reciprocal</u>							
<u>3rd Countries</u>							
1							
2							
3							
4							
<u>Sub Total</u>							
<u>Non Recip.</u>							
<u>Countries</u>							
1							
2							
3							
4							
<u>Sub Total</u>	533	295	284				
TOTAL	18 755	10 400	10 400				

STOCK			Member State	Quota 1978
Species	Geographical Regions	ICES Division		
PLAICE	North Sea	IV	Belgium	4 469
			Denmark	22 236
			Fed.Rep.Germany	4 469
			France	1 997
			Ireland	
			Italy	
			Luxembourg	
			Netherlands	33 805
			United Kingdom	24 819
			Available for Member States	
			EEC Total	91 795
PLAICE	English Channel	VII d, e	Belgium	140
			Denmark	
			Fed.Rep.Germany	
			France	1 745
			Ireland	
			Italy	
			Luxembourg	
			Netherlands	
			United Kingdom	1 159
			Available for Member States	
			EEC Total	3 044

Special Needs

IRELAND

STOCK

{ Espèce : HADDOCK
 { Région : VII

Simulation de calcul de quotas de captures

TAC = 8 000

	1976 catch	1975 Irish catch	1978 quota			
Belgique	42		61			
Danemark						
Allemagne	3		4			
France	4 621		6 707			
Irlande	479	605	1 010			
Italie						
Pays-Bas	15		22			
Royaume-Uni 1	135		196			
2						
E.H. de la Commun.	5 295		8 000			
<u>Reciprocal</u>						
<u>3rd Countries</u>						
1						
2						
3						
4						
<u>Sub Total</u>						
<u>Non Recip.</u>						
<u>Countries</u>						
1						
2						
3						
4						
<u>Sub Total</u>	184					
TOTAL	5 479		8 000			

Special needs NORTH BRITAIN

Espèce SAITHESTOCKRégion IVSimulation de calcul de quotas de captures TAC = 200 000

	1976 catch	Apply 1978 TAC		1978 quotas	Adjust- ments	New quotas 1978	
Belgique	120	80		151	+ 49	200	
Danemark	47 634	31 691		44 165	- 22 165	22 000	
Allemagne	38 455	25 584		42 756	+ 13 544	56 300	
France	32 552	21 657		38 617	- 11 617	27 000	
Irlande							
Italie							
Luxembourg							
Pays-Bas	6 094	4 054		7 431	- 431	7 000	
Royaume-Uni	19 332	12 862		18 880	+ 20 620	39 500	
Total des EM de la Communauté	144 187	95 928		152 000	0	152 000	
Féroës							
Finlande							
Islande							
Norvège							
Portugal							
Espagne							
Suède							
Autres							
Total des Pays tiers	156 426	104 072				48 000	
TOTAL	300 613	200 000				200 000	

Espèce LIEU NOIRSTOCKRégion VI a + bSimulation de calcul de quotas de captures

Anciens quotas 78 Ajustement Nouveaux quotas 78 Adjust-ments TAC = 30 000

	Anciens quotas 78	Ajustement	Nouveaux quotas 78	Adjust-ments	TAC = 30 000		
Belgique	40			+ 20	60		
Danemark	1			-	1		
Allemagne	216			+ 108	324		
France	12 352			+ 6 176	18 528		
Irlande	521			+ 260	781		
Italie							
Luxembourg							
Pays-Bas	231			+ 116	347		
Royaume-Uni	6 639			+ 3 320	+ 9 959		
Total des EM de la Communauté	20 000			10 000	30 000		
Féroës							
Finlande							
Islande							
Norvège							
Portugal							
Espagne							
Suède							
Autres							
Total des Pays tiers							
TOTAL							

Special Needs

IRELAND

STOCK

Espèce :

SAITHE

Région :

VII

Simulation de calcul de quotas de captures

TAC = 4 880

	1976 Catch	1975 Irish Catch	1978 Quota				
Belgique	30		28				
Danemark	5		4				
Allemagne							
France	2 923		2 608				
Irlande	1 362	1 045	1 742				
Italie							
Pays-Bas	106		94				
Royaume-Uni 1	455		405				
2							
E.M. de la Commun	4 881		4 880				
<u>Reciprocal</u>							
<u>3rd Countries</u>							
1							
2							
3							
4							
<u>Sub Total</u>							
<u>Non Recip.</u>							
<u>Countries</u>							
1							
2							
3							
4							
<u>Sub Total</u>	109						
TOTAL	4 900	.	4 880				

Espèce

MERLAN

STOCKRégion

IV

Simulation de calcul de quotas de captures

Anciens quotas 78 Ajustements Nouveaux quotas 78 TAC = 161 000

Belgique	3406		3 406				
Danemark	65 473	- 26 000	39 473				
Allemagne	2 518		2 518				
France	24 857		24 857				
Irlande							
Italie							
Luxembourg							
Pays-Bas	12 732		12 732				
Royaume-Uni	37 290	+ 26 000	63 290				
Total des EM de la Communauté	146 276	0	146 276				
Féroës							
Finlande							
Islande							
Norvège							
Portugal							
Espagne							
Suède							
Autres							
Total des Pays tiers	14 724		14 724				
TOTAL	161 000		161 000				

Special Needs

IRELAND
NORTH BRITAINSTOCK

Espèce : WHITING

Région : VI a + b

Simulation de calcul de quotas de captures

TAC = 16 600

	1976 CATCH	APPLY 1978 TAC	IRELAND 1.67x1975	1978 QUOTAS			
Belgique	14	10	9	9			
Danemark	-	-	-	-			
Allemagne	1	1	1	1			
France	3 665	2 514	2 196	2196			
Irlande	3 255	2 239	4 056	4056			
Italie							
Pays-Bas	255	175	153	153			
Royaume-Uni 1	16 920	11 639	10 166	10185			
2							
E.H. de la Commun.	24 100	16 578	16 581	16600			
<u>Reciprocal</u> <u>3rd Countries</u>							
1							
2							
3							
4							
<u>Sub Total</u>	2	1	1				
<u>Non Recip.</u> <u>Countries</u>							
1							
2							
3							
4							
<u>Sub Total</u>	31	21	18				
TOTAL	24 133	16 600	16 600				

Special Needs

Ireland

STOCK

Espèce : Whiting

Région : VII

Simulation de calcul de quotas de captures

TAC = 25 000

	capture 1976	1975 capture d'Irlande	1978 quota	Adjust- ments	New 1978 quota		
Belgique	365		215	+ 76	291		
Danemark	13		11	+ 4	15		
Allemagne							
France	17 761		10 481	+ 3 703	14 184		
Irlande	7 035	6 500	10 847	-	10 847		
Italie							
Pays-Bas	177		104	37	141		
Royaume-Uni 1							
2	5 663		3 342	+ 1 180	4 522		
E.H. de la Commun.	31 019		25 000	+ 5 000	30 000		
<u>Reciprocal</u> <u>3rd Countries</u>							
<u>1</u>							
<u>2</u>							
<u>3</u>							
<u>4</u>							
<u>Sub Total</u>							
<u>Non Recip.</u> <u>Countries</u>							
<u>1</u>							
<u>2</u>							
<u>3</u>							
<u>4</u>							
<u>Sub Total</u>							
TOTAL	31 019		25 000				

Special Needs

NO SCOTTISH
CATCHSTOCK

Espèce :

PLAICE

Région :

IV

Simulation de calcul de quotas de captures

TAC = 95 000

	1976 Catch			Total		
Belgique	4 574			4 469		
Danemark	25 612			22 236		
Allemagne	3 654			4 469		
France	497			1 997		
Irlande						
Italie						
Pays-Bas	46 457			33 805		
Royaume-Uni 1	27 099			24 819		
2						
E.H. de la Commun.	107 893			91 795		
<u>Reciprocal</u> <u>3rd Countries</u>						
<u>1</u>						
<u>2</u>						
<u>3</u>						
<u>4</u>	26					
<u>Sub Total</u>	26					
<u>Non Recip.</u> <u>Countries</u>						
<u>1</u>						
<u>2</u>						
<u>3</u>						
<u>4</u>						
<u>Sub Total</u>	40					
TOTAL	107 959			3 205		

Special Needs

STOCK

Espèce :

PLAICE

Région :

VII d+e

Simulation de calcul de quotas de captures

TAC = 3 100

	1976 Catch	1976 NEAFC Quota Key	1975 Irish Catch	1978 Quota			
Belgique	152	150		140			
Danemark							
Allemagne							
France	1 762	1 880		1 745			
Irlande	0	0	0				
Italie							
Pays-Bas							
Royaume-Uni 1	688	1 250		1 159			
2							
E.M. de la Commun.	2 602	3 310		3 044			
<u>Reciprocal</u>							
<u>3rd Countries</u>							
<u>1</u>							
<u>2</u>							
<u>3</u>							
<u>4</u>							
<u>Sub Total</u>		60		56			
<u>Non Recip.</u>							
<u>Countries</u>							
<u>1</u>							
<u>2</u>							
<u>3</u>							
<u>4</u>							
<u>Sub Total</u>							
TOTAL	2 602	3 370		3 100			

Special Needs

STOCK

Espèce :

PLAICE

Région :

VII f

Simulation de calcul de quotas de captures

TAC = 400

	1976 Catch	1976 NEAFC Quota Key	1975 Irish Catch	1978 Quota		
Belgique	79	100		63		
Danemark						
Allemagne						
France	98	130		81		
Irlande	0		0			
Italie						
Pays Bas						
Royaume-Uni 1	137	400		250		
2						
E.M. de la Commun.	314			394		
<u>Reciprocal</u>						
<u>3rd Countries</u>						
1						
2						
3						
4						
<u>Sub Total</u>		10		6		
<u>Non Recip.</u>						
<u>Countries</u>						
1						
2						
3						
4						
<u>Sub Total,</u>						
TOTAL	314	640		400		

Special Needs

IRELAND

STOCK

Espèce :

PLAICE

Région :

VIIa

Simulation de calcul de quotas de captures

TAC = 4 000

	1976 catch	Irish capture 1975	1978 quotas			
Belgique	135		140			
Danemark						
Allemagne						
France	126		130			
Irlande	866	884	1 476			
Italie						
Pays-Bas	73		76			
Royaume-Uni 1.	2 100		2 178			
2						
E.H. de la Commun.	3 300		4 000			
<u>Reciprocal</u> <u>3rd Countries</u>						
<u>1</u>						
<u>2</u>						
<u>3</u>						
<u>4</u>						
<u>Sub Total</u>						
<u>Non Recip.</u> <u>Countries</u>						
<u>1</u>						
<u>2</u>						
<u>3</u>						
<u>4</u>						
<u>Sub Total</u>						
TOTAL	3 300					

Special Needs

Ireland

STOCK

Espèce :

Plaice

Région :

VII b;c

Simulation de calcul de quotas de captures

TAC = 265

	1976 catch	1975 Irish catch	1978 TAC				
Belgique							
Danemark							
Allemagne							
France	9		9				
Irlande	133	153	256				
Italie							
Pays-Bas							
Royaume-Uni 1							
2							
E.M. de la Commun.	142		265				
<u>Reciprocal</u>							
<u>3rd Countries</u>							
1							
2							
3							
4							
<u>Sub Total</u>							
<u>Non Recip.</u>							
<u>Countries</u>							
1							
2							
3							
4							
<u>Sub Total</u>							
TOTAL	142		265				

Special Needs

IRELAND

STOCK

Espèce : PLAICE

Région : VII g - k

Simulation de calcul de quotas de captures

TAC = 928

	1976 Catch	1975 Irish Catch	1978 Quota			
Belgique	248		248			
Danemark						
Allemagne						
France	277		277			
Irlande	195	180	300			
Italie						
Pays-Bas	87		87			
Royaume-Uni 1	16		16			
2						
<u>E.M. de la Commun.</u>	823		928			
<u>Reciprocal</u>						
<u>3rd Countries</u>						
1						
2						
3						
4						
<u>Sub Total</u>						
<u>Non Recip.</u>						
<u>Countries</u>						
1						
2						
3						
4						
<u>Sub Total</u>						
TOTAL	823		928			

Special Needs

STOCK

Espèce :

Flaice

Région :

VIII

Simulation de calcul de quotas de captures

TAC = 189

	1976 catch	1978 quota					
Belgique	4	4					
Danemark							
Allemagne							
France	184	184					
Irlande							
Italie							
Pays-Bas	1	1					
Royaume-Uni 1							
2							
<u>E.M. de la Commun.</u>	189	189					
<u>Reciprocal</u>							
<u>3rd Countries</u>							
1							
2							
3							
4							
<u>Sub Total</u>							
<u>Non Recip.</u>							
<u>Countries</u>							
1							
2							
3							
4							
<u>Sub Total</u>							
TOTAL	189	189					

Special Needs

STOCK

Espèce :

PLAICE

Région :

VIa

Simulation de calcul de quotas de captures

TAC = 1681

	1976 catch	1975 Irish catch	1978 Quotas				
Belgique	1		1				
Danemark							
Allemagne							
France	44		44				
Irlande	463	328	548				
Italie							
Pays-Bas							
Royaume-Uni 1	1 059	942	1 088				
2							
E.H. de la Commun.	1 567		1681				
<u>Reciprocal</u>							
<u>3rd Countries</u>							
<u>1</u>							
<u>2</u>							
<u>3</u>							
<u>4</u>							
<u>Sub Total</u>							
<u>Non Recip.</u>							
<u>Countries</u>							
<u>1</u>							
<u>2</u>							
<u>3</u>							
<u>4</u>							
<u>Sub Total</u>							
TOTAL							

Espèce SOLESTOCKRégion IVTAC = 10 000 (ancien TAC
8 000)Simulation de calcul de quotas de capturesAnciens Ajuste- Nouveaux
quotas 78 ment quotas 78

Belgique	768	+ 192	960				
Danemark	384		384				
Allemagne	320		320				
France	224		224				
Irlande	-		-				
Italie	-		-				
Pays-Bas	5 888	1 472	7 360				
Royaume-Uni	384	368	752				
Autres E.M.	32	- 32	-				
Total des EM de la Communauté	8 000	2 000	10 000				
Féroës							
Finlande							
Islande							
Norvège							
Portugal							
Espagne							
Suède							
Autres							
Total des Pays tiers							
TOTAL							

Special Needs

STOCK

Espèce :
 Région :

Simulation de calcul de quotas de captures

TAC = 1 500

	1976 Catch	1976 NEAFC Quota Key	1978 Quota			
Belgique	207	150	155			
Danemark						
Allemagne						
France	951	870	900			
Irlande						
Italie						
Pays-Bas						
Royaume-Uni 1	664	405	419			
2						
E.M. de la Commun.	1 822	1 425	1 474			
<u>Reciprocal</u>						
<u>3rd Countries</u>						
1						
2						
3						
4						
<u>Sub Total</u>		25	26			
<u>Non Recip.</u>						
<u>Countries</u>						
1						
2						
3						
4						
<u>Sub Total</u>						
TOTAL	1 822	1 450	1 500			

Special Needs

STOCK

Espèce :

SOLE

Région :

VII f

Simulation de calcul de quotas de captures

TAC = 600

	1976 Catch	1976 NEAFC Quota Key	1978 Quota				
Belgique	416	400	343				
Danemark							
Allemagne							
France	16	100	86				
Irlande							
Italie							
Pays-Bas							
Royaume-Uni 1	88	190	163				
2							
E.M. de la Commun.	520	690	592				
<u>Reciprocal</u>							
<u>3rd Countries</u>							
1							
2							
3							
4							
<u>Sub Total</u>		10	8				
<u>Non Recip.</u>							
<u>Countries</u>							
1							
2							
3							
4							
<u>Sub Total</u>							
TOTAL	520	700	600				

Special Needs

Ireland

STOCK

Espèce : SOLE

Région : VII a

Simulation de calcul de quotas de captures

TAC = 1 400

	1976 Catch	1976 NEAFC Quota	Key	1975 Irish Catch	1978 Quota			
Belgique	674	720			624			
Danemark								
Allemagne								
France	72	150			130			
Irlande	74	100		24	40			
Italie								
Pays-Bas	381	240			208			
Royaume-Uni 1	262	450			390			
2								
E.M. de la Commun	1 463	1 660			1 392			
<u>Reciprocal</u> <u>3rd Countries</u>								
1								
2								
3								
4								
<u>Sub Total</u>		10			8			
<u>Non Recip.</u> <u>Countries</u>								
1								
2								
3								
4								
<u>Sub Total</u>								
TOTAL	1 463	1 670			1 400			

Special Needs

Ireland

STOCK

Espèce :

SOLE

Région :

VII b, c

Simulation de calcul de quotas de captures

TAC = 50

	1976 Catch	1975 Irish Catch	1978 Quota				
Belgique							
Danemark							
Allemagne							
France	6		18				
Irlande	44	19	32				
Italie							
Pays-Bas							
Royaume-Uni 1							
2							
E. M. de la Commun.	50		50				
<u>Reciprocal</u>							
<u>3rd Countries</u>							
1							
2							
3							
4							
<u>Sub Total</u>							
<u>Non Recip.</u>							
<u>Countries</u>							
1							
2							
3							
4							
<u>Sub Total</u>							
TOTAL	50		50				

Special Needs IRELAND
STOCK

Espèce : SOLE
Région : VII g - k

Simulation de calcul de quotas de captures

TAC = 1 028

	1976 Catch	1975 Irish Catch	1978 Quota				
Belgique	638		638				
Danemark							
Allemagne							
France	184		184				
Irlande	152	97	162				
Italie							
Pays-Bas	33		33				
Royaume-Uni 1	11		11				
2							
E.M. de la Commun.	1 018		1 028				
<u>Reciprocal</u>							
<u>3rd Countries</u>							
1							
2							
3							
4 AUTRES							
<u>Sub Total</u>							
<u>Non Recip.</u>							
<u>Countries</u>							
1							
2							
3							
4							
<u>Sub Total</u>							
TOTAL	1 018		1 028				

Special Needs

STOCK

Espèce :

SOLE

Région :

VIII

Simulation de calcul de quotas de captures

TAC = 3 068

	1976 catch	1978 quota				
Belgique	25	26				
Danemark						
Allemagne						
France	2968	2968				
Irlande						
Italie						
Pays-Bas	74	74				
Royaume-Uni 1						
2						
E.M. de la Commun.	3068	3068				
<u>Reciprocal</u>						
<u>3rd Countries</u>						
1						
2						
3						
4						
<u>Sub Total</u>						
<u>Non Recip.</u>						
<u>Countries</u>						
1						
2						
3						
4						
<u>Sub Total</u>						
TOTAL	3068	3068				

Special Needs

STOCK

Espèce :

SOLE

Région :

Via

Simulation de calcul de quotas de captures

TAC = 46

	1976 catch	1975 Irish catch	1978 Quota				
Belgique							
Danemark							
Allemagne							
France							
Irlande	38	19	32				
Italie							
Pays-Bas							
Royaume-Uni 1	12	8	14				
2							
E.H. de la Commun.	50		46				
<u>Reciprocal</u>							
<u>3rd Countries</u>							
1							
2							
3							
4							
<u>Sub Total</u>							
<u>Non Recip.</u>							
<u>Countries</u>							
1							
2							
3							
4							
<u>Sub Total</u>							
TOTAL							

Special Needs

NORTH BRITAIN

STOCK

Espèce : MACKEREL

Région : IV + III

Simulation de calcul de quotas de captures

TAC = 190 000

	1976 CATCH	APPLY 1978 TAC	1978 QUOTAS			
Belgique	292	178	354			
Danemark	27 995	17 100	23 247			
Allemagne	285	174	346			
France	2 607	1 592	3 139			
Irlande	-	-	-			
Italie	-	-	-			
Pays-Bas	2 163	1 321	2 534			
Royaume-Uni 1	1 278	781	984			
2						
E.H. de la Commun.	34 620	21 146	30 604			
<u>Reciprocal</u>						
<u>3rd Countries</u>						
1						
2						
3						
4						
<u>Sub Total</u>	272 638	166 528	159 396			
<u>Non Recip.</u>						
<u>Countries</u>						
1						
2						
3						
4						
<u>Sub Total</u>	3 808	2 326				
TOTAL	311 066	190 000	190 000			

Espèce MAQUEREAUXSTOCKRégion VI,VII,VIIISimulation de calcul de quotas de captures

Captures 76 Quotas 78

TAC 360 000
(ancien TAC 239 000)

Belgique	10	17					
Danemark		20 000					
Allemagne	391	25 000					
France	33 556	56 134					
Irlande	14 395	25 000					
Italie							
Luxembourg							
Pays-Bas	15 007	30 000					
Royaume-Uni	28 388 57 417	173 849					
Total des EM de la Communauté	149 164	330 000					
Feroës	5 644						
Finlande							
Islande							
Norvège	4 131						
Portugal							
Espagne	30 000						
Suède	38						
Autres							
Total des Pays tiers	39 813	30 000					
TOTAL	188 977	350 000					

Espèce SPRATSTOCKRégion IVSimulation de calcul de quotas de captures

Anciens quotas 78 Ajustement Nouveaux quotas 78 TAC = 450 000

Belgique	3 331	- 3 231	100				
Danemark	198 052	-11 708	186 344				
Allemagne	24 559		24 559				
France	3 331	- 3 231	100				
Irlande							
Italie							
Luxembourg							
Pays-Bas	3 330	- 1 830	1 500				
Royaume-Uni	63 747	+60 000	133 747				
Total des EM de la Communauté	296 350	0	346 350				
Féroës							
Finlande							
Islande							
Norvège							
Portugal							
Espagne							
Suède							
Autres							
Total des Pays tiers	103.650		103 650				
TOTAL	400 000		440 000				

Espèce SPRATSTOCKRégion III b, c, dSimulation de calcul de quotas de capturesQuota
1978

Belgique							
Danemark	8 200						
Allemagne	2 800						
France							
Irlande							
Italie							
Luxembourg							
Pays-Bas							
Royaume-Uni							
Total des EM de la Communauté	11 000						
Féroës							
Finlande							
Islande							
Norvège							
Portugal							
Espagne							
Suède							
Autres							
Total des Pays tiers							
TOTAL							

Espèce CHINCHARDSTOCKRégion IV-VI-VII-VIIISimulation de calcul de quotas de capturesAnciens
quotas
78Nouveaux
quotas
78

TAC = 250 000

Belgique							
Danemark							
Allemagne							
France							
Irlande							
Italie							
Luxembourg							
Pays-Bas							
Royaume-Uni		100 000					
Total des EM de la Communauté	230 000	230 000					
Féroës							
Finlande							
Islande							
Norvège							
Portugal							
Espagne							
Suède							
Autres							
Total des Pays tiers	20 000	20 000					
TOTAL	250 000	250 000					

Espèce HAKESTOCKRégion IV-VI-VII-VIIISimulation de calcul de quotas de captures

Anciens quotas 78 Ajustement Nouveaux quotas 78

TAC = 37 250

Belgique	344		344				
Danemark	933		933				
Allemagne	81		81				
France	18 552	+ 1 000	19 552				
Irlande	200	+ 300	500				
Italie	-	+ 1 000	1 000				
Luxembourg							
Pays-Bas	66		66				
Royaume-Uni	2 074	+ 260	2 334				
Total des EM de la Communauté	22 250	2 560	24 810				
Fondés							
Finlande							
Islande							
Norvège							
Portugal							
Espagne							
Suède							
Autres							
Total des Pays tiers	15 000		12 440				
TOTAL	37 250		37 250				

Special Needs

STOCK

Espèce : NORWAY POUT
 Région : IV

Simulation de calcul de quotas de captures

TAC = 500 000

	1975/1976 CATCH			1978 QUOTAS			
Belgique							
Danemark	248 000			252 000			
Allemagne							
France							
Irlande							
Italie							
Pays-Bas							
Royaume-Uni 1	20 000			20 000			
2							
E.H. de la Commun.	268 000			272 000			
<u>Reciprocal</u>							
<u>3rd Countries</u>							
<u>1</u>							
<u>2</u>							
<u>3</u>							
<u>4</u>							
<u>Sub Total</u>	232 000			228 000			
<u>Non Recip.</u>							
<u>Countries</u>							
<u>1</u>							
<u>2</u>							
<u>3</u>							
<u>4</u>							
<u>Sub Total</u>							
TOTAL	500 000			500 000			

Special Needs

STOCK

Espèce : Blue Whiting

Région : IV and VI

Simulation de calcul de quotas de captures

TAC = 500 000

	1978 TAC					
Belgique						
Danemark						
Allemagne						
France						
Irlande						
Italie						
Pays-Bas						
Royaume-Uni 1						
2						
E.M. de la Commun.	500 000 disponible					
<u>Reciprocal</u>						
<u>and Countries</u>						
1						
2						
3						
4						
Sub Total	100 000					
<u>Non Recip.</u>						
<u>Countries</u>						
1						
2						
3						
4						
Sub Total						
TOTAL	500 000					

Espèce MONKSTOCKRégion VI,VII,VIIISimulation de calcul de quotas de capturesAnciens
quotas
78Ajuste-
mentsNouveaux
quotas
78

TAC = 21 340 (i.e. + 20%)

Belgique	555		555				
Danemark							
Allemagne	6		6				
France	12 669		12 669				
Irlande	8	+ 92	100				
Italie							
Luxembourg							
Pays-Bas	27		27				
Royaume-Uni	2 517	+ 3 466	5 983				
Total des EM de la Communauté	15 782		19 340				
Féroës							
Finlande							
Islande							
Norvège							
Portugal							
Espagne							
Suède							
Autres							
Total des Pays tiers	2 000		2 000				
TOTAL	17 782		21 340				

Espèce MEGRIMstockRégion VI,VII,VIIIsimulation de calcul de quotas de captures

Anciens quotas 78 Ajustements Nouveaux quotas 78 TAC = 11 785 (i.e. + 20 %)

Belgique	153		153				
Danemark							
Allemagne							
France	7 324		7 324				
Irlande	339	+ 161	500				
Italie							
Luxembourg							
Pays-Bas	2		2				
Royaume-Uni	503	+ 1 803	2 306				
Total des EM de la Communauté	8 321		10 285				
Féroës							
Finlande							
Islande							
Norvège							
Portugal							
Espagne							
Suède							
Autres							
Total des Pays tiers	1 500		1 500				
TOTAL	9 821		11 785				

Espèce LANCONSTOCKRégion IVSimulation de calcul de quotas de captures

Captures 76 Anciens quotas 78 Nouveaux quotas 78 TAC = 500 000
 (ancien TAC : 400 000)

Belgique						
Danemark	424 747		400 000			
Allemagne						
France						
Irlande						
Italie						
Luxembourg						
Pays-Bas						
Royaume-Uni	18 696		20 000			
Total des EM de La Communauté	443 443	320 000	420 000			
Féroés	8 073					
Finlande						
Islande						
Norvège	44 391					
Portugal						
Espagne						
Suède						
Autres						
Total des Pays tiers	52 464	80 000	80 000			
TOTAL	495 907	400 000	500 000			

Espèce SQUID, POULPES, CUTTLE
FISH

STOCK

Région VI-VII-VIII

Simulation de calcul de quotas de captures

Capture
76

Possibilité
de capture
78

Belgique							
Danemark							
Allemagne							
France							
Irlande							
Italie	0	5 800					
Luxembourg							
Pays-Bas							
Royaume-Uni							
Total des EM de la Communauté							
Féroës							
Finlande							
Islande							
Norvège							
Portugal							
Espagne							
Suède							
Autres							
Total des Pays tiers							
TOTAL							

Espèce REDFISHStockRégion XIVSimulation de calcul de quotas de captures

1978

TAC = 43 000

Belgique							
Danemark		* 500					
Allemagne		20 000					
France							
Irlande							
Italie							
Luxembourg							
Pays-Bas							
Royaume-Uni							
Total des EM de la Communauté	non-alloué	22 500 <u>20 500</u> 43 000					
Féerøys							
Finlande							
Islande							
Norvège							
Portugal							
Espagne							
Suède							
Autres							
Total des Pays tiers							
TOTAL							

* Reserved for Greenland coastal fishermen.

Espèce REDFISHSTOCKRégion 0 - 1Simulation de calcul de quotas de captures

1978

TAC = 11 500

Belgique							
Danemark		* 5 000					
Allemagne		6 500					
France							
Irlande							
Italie							
Luxembourg							
Pays-Bas							
Royaume-Uni							
Total des EM de la Communauté		11 500					
Féroës							
Finlande							
Islande							
Norvège							
Portugal							
Espagne							
Suède							
Autres							
Total des Pays tiers							
TOTAL							

* Reserved for Greenland coastal fishermen.

Espèce GREENLAND HALIBUTStockRégion XIVSimulation de calcul de quotas de captures

1978

TAC 20 000

Belgique							
Danemark							
Allemagne		20 000					
France							
Irlande							
Italie							
Luxembourg							
Pays-Bas							
Royaume-Uni							
Total des EM de la Communauté		20 000					
Féroës							
Finlande							
Islande							
Norvège							
Portugal							
Espagne							
Suède							
Autres							
Total des Pays tiers							
TOTAL							

Espèce GREENLAND HALIBUTSTOCKRégion 0 - ISimulation de calcul de quotas de captures

TAC 25 000

1978

Belgique							
Danemark		* 8 500					
Allemagne		16 000					
France							
Irlande							
Italie							
Luxembourg							
Pays-Bas							
Royaume-Uni							
Total des EM de la Communauté		24 500					
Féroës							
Finlande							
Islande							
Norvège							
Portugal							
Espagne							
Suède							
Autres		500					
Total des Pays tiers		25 000					
TOTAL							

* Reserved to Greenland coastal fishermen.

Espèce ROUNDNOSE GRENADEstockRégion 0 - 1Simulation de calcul de quotas de captures

1978

TAC = 8 500

Belgique							
Danemark		* 2 000					
Allemagne		6 000					
France							
Irlande							
Italie							
Luxembourg							
Pays-Bas							
Royaume-Uni							
Total des EM de La Communauté		8 000					
Féroës							
Finlande							
Islande							
Norvège							
Portugal							
Espagne							
Suede							
Autres		500					
Total des Pays tiers		500					
TOTAL		8 500					

* Reserved to Greenland coastal fishermen.

Espèce SHRIMPSSTOCKRégion 0 - ISimulation de calcul de quotas de captures

TAC : 40 000

1978

Belgique							
Danemark		18 000 3 000					
Allemagne							
France		1 000					
Irlande							
Italie							
Luxembourg							
Pays-Bas							
Royaume-Uni							
Total des EM de la Communauté		22 000					
Féroës							
Finlande							
Islande							
Norvège							
Portugal							
Espagne							
Suède							
Autres		1 000					
Total des Pays tiers		17 000					
TOTAL		40 000					

Espèce SHRIMPSSTOCKRégion French GuyanaSimulation de calcul de quotas de captures

TAC = 3 000

Belgique							
Danemark							
Allemagne							
France							
Irlande							
Italie							
Luxembourg							
Pays-Bas							
Royaume-Uni							
Total des EM de la Communauté							
Feroës							
Finlande							
Islande							
Norvège							
Portugal							
Espagne							
Suède							
Autres							
Total des Pays tiers							
TOTAL	3 000						

Special Needs

0

STOCK

Espèce : Herring

Région : IV + VII d

Simulation de calcul de quotas de captures

TAC = 0

Belgique							
Danemark							
Allemagne							
France							
Irlande							
Italie							
Pays-Bas							
Royaume-Uni 1							
2							
E.H. de la Commun.							
<u>Reciprocal</u>							
<u>3rd Countries</u>							
1							
2							
3							
4							
<u>Sub Total</u>							
<u>Non Recip.</u>							
<u>Countries</u>							
1							
2							
3							
4							
<u>Sub Total</u>							
TOTAL							

Special Needs

0

STOCK

Espèce : HERRING

Région : VII g - k .except
Bantry Bay

Simulation de calcul de quotas de captures

TAC = 0

Belgique							
Danemark							
Allemagne							
France							
Irlande							
Italie							
Pays-Bas							
Royaume-Uni 1							
2							
E.H. de la Commun.							
<u>Reciprocal</u>							
<u>3rd Countries</u>							
1							
2							
3							
4							
<u>Sub Total</u>							
<u>Non Recip.</u>							
<u>Countries</u>							
1							
2							
3							
4							
<u>Sub Total</u>							
TOTAL							

Espèce HARENGSTOCKRégion Bantry Bay
VII jSimulation de calcul de quotas de captures

Anciens quotas 78 Ajustements Nouveaux quotas 78 TAC = 1596 (i.e. +20%)

Belgique							
Danemark							
Allemagne							
France							
Irlande	1 330	+ 1 170	2 500				
Italie							
Luxembourg							
Pays-Bas							
Royaume-Uni							
Total des EM de la Communauté	1 330	+ 1 170	2 500				
Féroës							
Finlande							
Islande							
Norvège							
Portugal							
Espagne							
Suède							
Autres							
Total des Pays tiers							
TOTAL							

Special Needs

STOCK

Espèce : HERRING

Région : VII a (Mourne)

Simulation de calcul de quotas de captures

TAC = 0

Belgique							
Danemark							
Allemagne							
France							
Irlande							
Italie							
Pays-Bas							
Royaume-Uni 1							
2							
E.H. de la Commun.							
<u>Reciprocal</u>							
<u>3rd Countries</u>							
1							
2							
3							
4							
<u>Sub Total</u>							
<u>Non Recip.</u>							
<u>Countries</u>							
1							
2							
3							
4							
<u>Sub Total</u>							
TOTAL							

Special Needs

Ireland

STOCK

Espèce : Herring

Région : VII a (Manx + offshor
Mourne)Simulation de calcul de quotas de captures

TAC = 12 500

	capture 1976		capture 1975 d'Irlande		1978 quota	
	Manx		Manx		Manx	
Belgique						
Danemark						
Allemagne						
France	599				366	
Irlande	2 146		2 406		2 146	
Italie						
Pays-Bas	1 169				715	
Royaume-Uni 1	15 164				9 273	
2						
E.H. de la Commun.	19 078				12 500	
<u>Reciprocal</u>						
<u>3rd Countries</u>						
<u>1</u>						
<u>2</u>						
<u>3</u>						
<u>4</u>						
<u>Sub Total</u>						
<u>Non Recip.</u>						
<u>Countries</u>						
<u>1</u>						
<u>2</u>						
<u>3</u>						
<u>4</u>						
<u>Sub Total</u>						
TOTAL	19 078				12 500	

Espèce HARENGSTOCKRégion VII b,cSimulation de calcul de quotas de captures

Anciens quotas 78 Ajustements Nouveaux quotas 78 TAC = 14 000 (ancien TAC = 10 000)

Belgique	-	-	-				
Danemark	-	-	-				
Allemagne	1	+ 9	10				
France							
Irlande	9 293	+ 707	10 000				
Italie	-		-				
Luxembourg							
Pays-Bas	706	+ 3 294	4 000				
Royaume-Uni	-		-				
Total des EM de la Communauté	10 000	+ 4 000	14 010				
Féroës							
Finlande							
Islande							
Norvège							
Portugal							
Espagne							
Suède							
Autres							
Total des Pays tiers							
TOTAL							

Special Needs

North Britain

STOCK

Espèce : HERRING

Région : VIa

Simulation de calcul de quotas de captures

TAC = 64 000

	1977 quota	apply to 1978 TAC	Ireland 1975 x 1,67				
Belgique							
Danemark	200	203	200				
Allemagne	3 700	3 765	3 700				
France	1 200	1 221	1 200				
Irlande	6 400	6 512	7 500				
Italie							
Pays-Bas	3 000	3 052	3 000				
Royaume-Uni 1	39 000	39 682	39 000				
2							
E.H. de la Commun.	53 500	54 435	54 600				
<u>Reciprocal</u>							
<u>3rd Countries</u>							
<u>1</u>							
<u>2</u>							
<u>3</u>							
<u>4</u>							
<u>Sub Total</u>	9 400	9 565	9 400				
<u>Non Recip.</u>							
<u>Countries</u>							
<u>1</u>							
<u>2</u>							
<u>3</u>							
<u>4</u>							
<u>Sub Total</u>							
TOTAL	62 900	64 000	64 000				

Special Needs
STOCK

Espèce :
Région :

Simulation de calcul de quotas de captures

TAC =

Belgique							
Danemark							
Allemagne							
France							
Irlande							
Italie							
Pays-Bas							
Royaume-Uni 1							
2							
E.H. de la Commun.							
<u>Reciprocal</u>							
<u>3rd Countries</u>							
1							
2							
3							
4							
<u>Sub Total</u>							
<u>Non Recip.</u>							
<u>Countries.</u>							
1							
2							
3							
4							
<u>Sub Total</u>							
<u>TOTAL</u>							

Espèce HARENGSTOCKRégion III b, c, dSimulation de calcul de quotas de capturesQuota
1978

Belgique							
Danemark	20 200						
Allemagne	15 600						
France							
Irlande							
Italie							
Luxembourg							
Pays-Bas							
Royaume-Uni							
Total des EM de la Communauté	35 800						
Féroës							
Finlande							
Islande							
Norvège							
Portugal							
Espagne							
Suède							
Autres							
Total des Pays tiers							
TOTAL							

