

COM(87) 602
19 November 1987

REPORT

by the Statistical Office of the European Communities

on trends in public service remuneration

Joint Index - Specific Indicator

(Article 65 of the Staff Regulations)

per July 1st, 1987

<u>List of tables</u>	Page
A. Graphic. Change in real terms of civil servants' remuneration (Specific Indicator)	103
B. Cost-of-living trends in Member States (Joint Index)	104
C. Change in total compensation of employees in central governments	105
D. Details of the calculation of the cost-of-living index	109
E. Table of weightings for the computation of the Community average	110
F. Nominal changes in civil servants' remuneration in the national public services of Member States	111
G. Changes in real terms of civil servants' remuneration in the national public services of Member States	112
H. Graphic. Changes in real terms in remuneration in the different categories	113
J. Synopsis of the joint index in Member States	177
K. Tables of chapter III Trends in the total emoluments paid by the central administrations of the Member States (control indicator)	185
L. Comparison of changes in gross and net salaries	209

<u>Table of contents</u>	Page
Introduction	102
Summary	103
Chapter I. Trends in public service remuneration in the Member States (Specific Indicator)	106
1. General observations	107
2. Summary of results for the Community	110
3. Calculation of the indicator for individual Member States	
a. Germany	114
b. France	118
c. Italy	122
d. Netherlands	126
e. Belgium	130
f. Luxembourg	134
g. United Kingdom	141
h. Ireland	148
i. Denmark	154
k. Greece	159
l. Spain	164
m. Portugal	168
Chapter II. Trends in the cost of living (Joint Index)	175
1. General observations	176
2. Summary of results	177
3. Calculation of the index for individual Member States	178
Chapter III. Trends in the total emoluments paid by the central administrations of the Member States (Control Indicator)	185
Chapter IV. Statistical commentaries	207
<u>Annexes:</u> <u>List of annexes</u>	300
Reports by the Member States on trends in remunerations	302
Summary report of the meeting of the Working Party "Joint Index - Art. 65 of the Staff Regulations"	449

Introduction

In accordance with Art. 65 of the Staff Regulations of officials of the European Communities, the Statistical Office hereby presents its report on the joint index for the period July 1st, 1986 - June 30th, 1987.

Under the Council Decision of 15.12.1981 laying down the method of annually adjusting the remuneration of officials (1981 method), adjustments are made on the basis of the following two determining factors and one control variable:

- trends in the salaries of national civil servants (specific indicator),
- trends in the cost of living of Community officials (joint index),
- trends in the total emoluments paid by the central administrations of the Member States (control indicator),

and statistical commentaries on those trends are to be supplied.

The Statistical Office has accordingly divided this report into four chapters. Wherever necessary in the report, the Statistical Office has provided technical details of the calculation procedure.

All of the calculations in this report are based on the data provided by the departments responsible in the Member States.

The Italian delegation indicated at the meeting of the working party in March that a retroactive increase of civil servants' pay had been decided concerning the reference period 1985/1986. As the Italian Treasury has not yet sent to the Commission data concerning these corrections, it will be necessary to present at a later stage a corrigendum to the 1985/1986 annual report. This corrigendum could have an effect on the remuneration of European civil servants for the period July 1985 - June 1986.

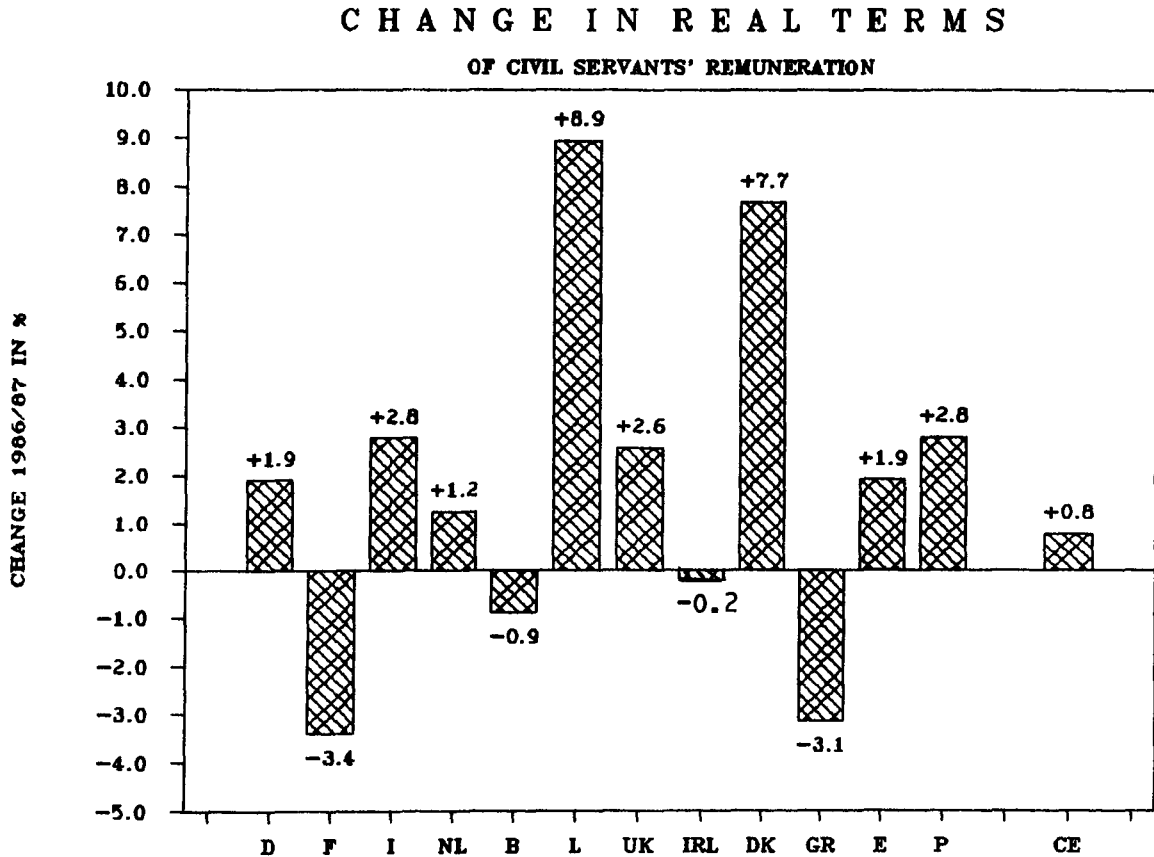
The Working Party, which comprises experts from the various statistical offices, has held one meeting this year. The summary report on the meeting is attached.

Summary

1. Trends in the salaries of national civil servants (specific indicator)

The table below shows the price-adjusted trend in the net earnings of civil servants in the central administrations of the Member States during the period 1.7.1986 - 30.6.1987. The Community average is 100,8.

Table A.



The specific indicator was calculated on the basis of the data supplied to the Statistical Office of the European Community by the departments responsible in the Member States.

The calculation of the specific indicator for each individual Member State is also given in four tables in Chapter I.3.

The calculation procedure is described in detail in Chapter I.1.

There was no intermediate rounding-off in the calculation of the values, but values are shown rounded off in the tables for the sake of clarity.

2. Cost-of-living trends (joint index)

The trends in the cost of living for European officials in the Member States during the period 1st July 1986 and 30th June 1987 were calculated in conjunction with the statistical offices of the Member States. The table below gives the values for the various places of employment within the Community. The joint index for Brussels for the reference period is 102,1.

Table B

Cost-of-living trends for a European civil servant (joint index)
for the period between July 1st, 1986 and June 30th, 1987

Germany	100,9
France	103,8
Italy - Rome	104,6
- Varese	106,2
Netherlands	99,9
Belgium/Luxembourg	102,1
United Kingdom	104,8
Ireland	102,8 *
Denmark	103,4 *
Greece	118,1 *
Spain	104,9 *
Portugal	109,4 *

* National Index

Details of the calculation of this index are given in Chapter II.1.

3. Trends in the total emoluments paid by the central administrations of the Member States (control indicator)

The table below compares the values calculated in Chapter III for the index of per capita emoluments in the national central administrations with the specific indicator.

The differences between the two indicators are examined in Chapter IV.

Table C.

Evolution of total emoluments and the specific indicator
(gross/real) for the period 1986/1987

	Total emoluments (Central government)	Specific Indicator
Germany	+ 2,0	+ 2,6
France	+ 0,3	- 4,0
Italy	+ 2,3	+ 3,7
Netherlands	+ 2,9	+ 0,6
Belgium	+ 0,8	- 1,6
Luxembourg	+ 1,5	+ 5,5
United Kingdom	+ 2,3	+ 0,8
Ireland	+ 2,3	+ 1,5
Denmark	+ 2,0	+ 3,7
Greece	+ 3,0	- 7,8
Spain	+ 1,0	+ 2,7
Portugal	+ 2,7	+ 2,8
COMMUNITY	+ 1,5	+ 0,5

C H A P T E R I

**Trends in public service remuneration
in the Member States**

(Specific Indicator)

Chapter I - Trends in public service remuneration in the Member States
(Specific Indicator)

I.1. General observations on the calculation of the specific indicator

The specific indicator has been calculated for many years using a virtually unchanged procedure based mainly on Council Decisions. How the indicator should be used in practice was decided by the Working Party "Joint Index - Art. 65 of the Staff Regulations" and by the Council's Working Party on the Staff Regulations, or through tacit approval of the procedure proposed by the Statistical Office.

All calculations are based on the information supplied by the national authorities of the Member States to the Statistical Office on the salaries paid to civil servants in the central administrations.

The information contains data on the salaries paid to all of the main grades, giving the starting salary and final salary for each grade on 30 June or 1 July of the year in question.

The gross salary and net salary are quoted for a single official and a married official with a wife and two dependent children.

The information supplied by the Member States is set out in an annex.

The different steps of the calculation of the Specific Indicator for each Member State are presented in four tables in Chapter I.3.

Table 1 shows data supplied by Member States in a standardized form.

From these data the Statistical office calculates a salary trend index for each of the cases involved (Table 2).

From the details of table 1 has been established an average of salaries by grade and family stand and an overall average of both factors.

From these averages by grade and family situation has been calculated a weighted average of salaries by category. The number of civil servants serving per grade has been used as weighting. Indices of these averages by category are shown in table 4, line 1 to 4.

From the averages by category EUROSTAT calculates a weighted average of salaries of all civil servants. The number of civil servants by category is taken as weighting factor. Comparison of values with corresponding values of the previous year gives the Index of the overall evolution of civil servants' pay, which is called the "Specific Indicator" in the Council's decision of 15.12.81 on the Method (Table 4, line 5).

For comparison purposes another weighted average of all civil servants is established in which the number of officials of the European Institution is used as weighting. Indices of these values are given in line 6 of table 4.

All of the above-mentioned indices are calculated for gross and net earnings both as a nominal index and as a real index, the nominal index being deflated by the cost-of-living index. In other words, four separate indices are calculated for each of the values mentioned earlier:

trends in gross earnings: at current prices
trends in gross earnings: at constant prices

trends in net earnings: at current prices
trends in net earnings: at constant prices

The cost-of-living indices supplied by the national statistical offices are used to deflate the figures produced (see the table of cost-of-living indices given below).

To calculate the Community average the indices for each Member State are weighted by the total emoluments paid by the central administrations as taken from the national accounts.

Table D

Consumer price index trends in the Member States
between July 1st, 1986 and July 1st, 1987

	*		* Average *			* Average Index per 1.7.1987		

Germany	*	June 1986	121.1		June 1987	121.3		
Base 1980	*	July 1986	120.5	120.8	July 1987	121.3	121.3	100.4
	*							
France	*	June 1986	161.9		June 1987	167.2		
Base 1980	*	July 1986	162.1	162.0	July 1987	167.6	167.4	103.3
	*							
Italy	*	June 1986	106.2		June 1987	110.6		
Base 1985	*	July 1986	106.2	106.2	July 1987	110.9	110.8	104.3
	*							
Netherlands	*	June 1986	123.0		June 1987	122.0		
Base 1980	*	July 1986	121.8	122.4	July 1987	121.9	122.0	99.6
	*							
Belgium	*	June 1986	131.45	131.5	June 1987	133.65	133.7	101.7
Base 1981	*							
	*							
Luxembourg	*	July 1986	104.15	104.2	July 1987	103.81	103.8	99.7
Base 1984	*							
	*							
United Kingdom	*	June 1986	385.8		June 1987	402.0		
Base 1974	*	July 1986	384.7	385.3	July 1987	401.6	401.8	104.3
	*							
	*							
Ireland	*	May 1986	126.9	126.9	May 1987	130.5	130.5	102.8
Base 1982	*							
	*							
Denmark	*	March 1986	148.0		March 1987	155.9		
Base 1980	*	April 1986	151.8	149.9	April 1987	156.5	156.2	104.2
	*							
Greece	*	June 1986	208.7		June 1987	246.4		
Base 1982	*	July 1986	207.6	208.2	July 1987	242.7	244.6	117.5
	*							
Spain	*	June 1986	129.9		June 1987	136.3		
Base 1983	*	July 1986	131.3	130.6	July 1987	137.7	137.0	104.9
	*							
Portugal	*	June 1986	711.3		June 1987	774.3		
Base 1976	*	July 1986	711.1	711.2	July 1987	776.8	775.6	109.0
	*							
	*							

Table E

Table of weightings for the computation of a Community average

COUNTRY	Base: Total emoluments in central government %
Germany	25,7
France	24,6
Italy	14,1
Netherlands	3,6
Belgium	4,4
Luxembourg	0,2
United Kingdom	17,6
Ireland	0,7
Denmark	1,7
Greece	0,7
Spain	5,5
Portugal	1,2
TOTAL	100,0

I.2. Specific indicator - Summary results for the Community

Table G shows the change in real terms of the net salaries of civil servants in Member States and the Community average. It gives the change for all civil servants together and for the four categories separately.

Table F presents the equivalent nominal indices.

Values of both tables are derived from the respective Table 4 calculated for individual Member States in chapter I.3.

Table G

Changes in real terms of civil servants' remuneration
in the national public service
between July 1, 1986 and June 30, 1987

		* A *	* B *	* C *	* D *	* Total * pond.nat	* Total * pond.com.

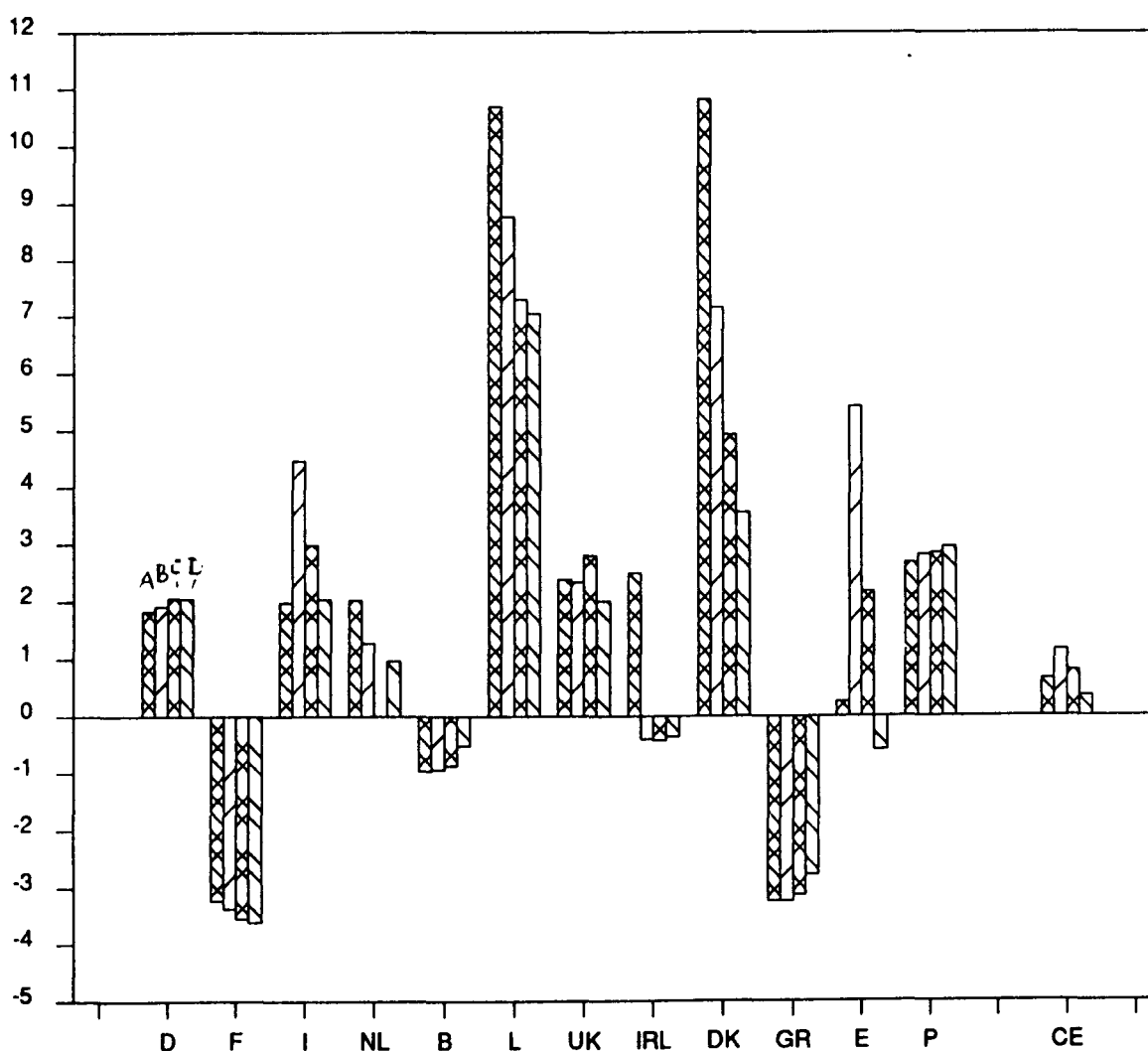
DEUTSCHLAND	gross	* 102.7 *	* 102.6 *	* 102.6 *	* 102.6 *	* 102.6 *	* 102.6 *
	net	* 101.8 *	* 101.9 *	* 102.1 *	* 102.1 *	* 101.9 *	* 101.9 *
FRANCE	gross	* 96.0 *	* 96.1 *	* 96.0 *	* 96.2 *	* 96.0 *	* 96.0 *
	net	* 96.8 *	* 96.6 *	* 96.5 *	* 96.4 *	* 96.6 *	* 96.7 *
ITALIA	gross	* 102.6 *	* 105.7 *	* 104.0 *	* 102.9 *	* 103.7 *	* 103.7 *
	net	* 102.0 *	* 104.5 *	* 103.0 *	* 102.0 *	* 102.8 *	* 102.8 *
NEDERLANDE	gross	* 100.8 *	* 100.7 *	* 0.0 *	* 100.5 *	* 100.6 *	* 100.7 *
	net	* 102.0 *	* 101.3 *	* 0.0 *	* 101.0 *	* 101.2 *	* 101.7 *
BELGIQUE/BELGIE	gross	* 98.4 *	* 98.4 *	* 98.4 *	* 98.9 *	* 98.4 *	* 98.4 *
	net	* 99.0 *	* 99.1 *	* 99.1 *	* 99.5 *	* 99.1 *	* 99.1 *
LUXEMBOURG	gross	* 106.4 *	* 105.3 *	* 104.4 *	* 104.9 *	* 105.5 *	* 105.9 *
	net	* 110.7 *	* 108.8 *	* 107.3 *	* 107.1 *	* 108.9 *	* 109.6 *
UNITED KINGDOM	gross	* 100.3 *	* 100.7 *	* 100.9 *	* 101.2 *	* 100.8 *	* 100.6 *
	net	* 102.4 *	* 102.3 *	* 102.8 *	* 102.0 *	* 102.6 *	* 102.5 *
IRELAND	gross	* 105.3 *	* 101.1 *	* 101.1 *	* 101.1 *	* 101.5 *	* 103.4 *
	net	* 102.5 *	* 99.6 *	* 99.6 *	* 99.6 *	* 99.8 *	* 101.0 *
DANMARK	gross	* 103.7 *	* 103.5 *	* 103.6 *	* 103.9 *	* 103.7 *	* 103.7 *
	net	* 110.8 *	* 107.2 *	* 104.9 *	* 103.6 *	* 107.7 *	* 107.8 *
HELLAS	gross	* 91.8 *	* 91.7 *	* 92.2 *	* 93.4 *	* 92.2 *	* 92.0 *
	net	* 96.8 *	* 96.8 *	* 96.9 *	* 97.2 *	* 96.9 *	* 96.8 *
ESPAÑA	gross	* 101.0 *	* 106.6 *	* 102.8 *	* 100.1 *	* 102.7 *	* 102.3 *
	net	* 100.3 *	* 105.4 *	* 102.2 *	* 99.4 *	* 101.9 *	* 101.6 *
PORTUGAL	gross	* 102.6 *	* 102.8 *	* 102.8 *	* 103.0 *	* 102.8 *	* 102.7 *
	net	* 102.7 *	* 102.8 *	* 102.8 *	* 103.0 *	* 102.8 *	* 102.8 *

COMMUNITY	gross	* 100.2 *	* 101.0 *	* 100.6 *	* 100.4 *	* 100.5 *	* 100.5 *
	net	* 100.7 *	* 101.2 *	* 100.8 *	* 100.4 *	* 100.8 *	* 100.8 *

From the illustration below it can be seen there is no uniform trend for the categories of civil servants in the Member States. In two Member States B - grades are clearly favoured above other grades. In two other Member States there is a small non-linear element for the higher grades. At the Community average the differences in evolution between categories are insignificant.

Table H.

Changes in salaries for the categories A, B, C and D (in %) net in real term - between July 1st, 1986 and June 30th, 1987



1. National civil servants' pay
Minimum/mean/maximum per grade
a. Year 1987

grade	single						married, two children					
	min	gross mean	max	min	net mittel	mean	min	gross mean	max	min	net mean	max
A: B9	13046			7294			13585			9098		
B6	11098			6437			11638			8135		
B3	9309			5631			9839			7208		
A16	5335	6682	8478	3723	4392	5248	5874	7221	9018	4871	5730	6764
A15	4825	5989	7543	3460	4053	4807	5364	6529	8082	4524	5300	6238
A13	4232	5151	6104	3139	3629	4109	4772	5690	6644	4102	4749	5372
B: A13	4334	5151	6104	3197	3629	4109	4873	5690	6644	4177	4749	5372
A11	3673	4308	5048	2822	3183	3577	4242	4877	5618	3713	4186	4708
A9	2929	3454	3953	2363	2691	2983	3498	4024	4522	3134	3543	3926
C: A9	2956	3419	3917	2380	2670	2963	3525	3988	4487	3155	3515	3899
A7	2649	2985	3343	2177	2400	2624	3211	3547	3905	2910	3171	3450
A5	2473	2581	2852	2056	2131	2312	3057	3165	3435	2790	2874	3085
D: A5	2365	2581	2852	1980	2131	2312	2949	3165	3435	2705	2874	3085
A3	2266	2430	2635	1909	2027	2167	2871	3035	3240	2644	2772	2932
A1	2108	2263	2418	1795	1908	2019	2713	2869	3024	2521	2643	2763

b. Year of comparison 1986

grade	single						married, two children					
	min	gross mean	max	min	net mittel	mean	min	gross mean	max	min	net mean	max
A: B9	12647			7127			13173			8893		
B6	10759			6287			11285			7957		
B3	9024			5502			9550			7054		
A16	5181	6484	8221	3644	4295	5127	5706	7009	8747	4759	5699	6614
A15	4683	5810	7312	3385	3964	4696	5209	6336	7838	4416	5176	6096
A13	4110	4999	5921	3073	3551	4018	4636	5524	6446	4002	4635	5247
B: A13	4208	4999	5921	3128	3551	4018	4734	5524	6446	4075	4635	5247
A11	3569	4183	4899	2761	3114	3499	4125	4739	5455	3622	4087	4596
A9	2844	3353	3835	2308	2631	2917	3400	3909	4391	3058	3453	3827
C: A9	2869	3317	3799	2323	2608	2896	3425	3873	4355	3077	3426	3798
A7	2573	2898	3244	2126	2342	2563	3122	3447	3793	2841	3093	3364
A5	2400	2505	2766	2006	2079	2256	2971	3075	3337	2722	2804	3008
D: A5	2296	2505	2766	1933	2079	2256	2866	3075	3337	2641	2804	3008
A3	2200	2359	2557	1862	1977	2115	2792	2951	3149	2583	2707	2860
A1	2047	2197	2348	1753	1860	1969	2639	2790	2940	2463	2580	2698

Bundesrepublik Deutschland

2. Change in civil servants' pay
Minimum/mean/maximum per grade
a. Index at current prices

grade	single						married, two children					
	min	gross mean	max	min	net mittel	mean	min	gross mean	max	min	net mean	max
A: B9	103.2			102.3			103.1				102.3	
B6	103.2			102.4			103.1				102.2	
B3	103.2			102.3			103.0				102.2	
A16	103.0	103.1	103.1	102.1	102.3	102.4	102.9	103.0	103.1	102.4	100.5	102.3
A15	103.0	103.1	103.2	102.2	102.2	102.4	103.0	103.0	103.1	102.4	102.4	102.3
A13	103.0	103.0	103.1	102.1	102.2	102.3	102.9	103.0	103.1	102.5	102.5	102.4
B: A13	103.0	103.0	103.1	102.2	102.2	102.3	102.9	103.0	103.1	102.5	102.5	102.4
A11	102.9	103.0	103.0	102.2	102.2	102.2	102.8	102.9	103.0	102.5	102.4	102.4
A9	103.0	103.0	103.1	102.4	102.3	102.3	102.9	102.9	103.0	102.5	102.6	102.6
C: A9	103.0	103.1	103.1	102.5	102.4	102.3	102.9	103.0	103.0	102.5	102.6	102.7
A7	103.0	103.0	103.1	102.4	102.5	102.4	102.9	102.9	103.0	102.4	102.5	102.6
A5	103.0	103.0	103.1	102.5	102.5	102.5	102.9	102.9	102.9	102.5	102.5	102.6
D: A5	103.0	103.0	103.1	102.4	102.5	102.5	102.9	102.9	102.9	102.4	102.5	102.6
A3	103.0	103.0	103.1	102.5	102.5	102.5	102.8	102.8	102.9	102.4	102.4	102.5
A1	103.0	103.0	103.0	102.4	102.6	102.5	102.8	102.8	102.9	102.4	102.4	102.4

b. Index at constant prices
(Consumer Price Index: 100.4)

grade	single						married, two children					
	min	gross mean	max	min	net mittel	mean	min	gross mean	max	min	net mean	max
A: B9	102.7			101.9			102.7				101.9	
B6	102.7			102.0			102.7				101.8	
B3	102.7			101.9			102.6				101.8	
A16	102.5	102.6	102.7	101.7	101.8	101.9	102.5	102.6	102.7	101.9	100.1	101.8
A15	102.6	102.7	102.7	101.8	101.8	101.9	102.6	102.6	102.7	102.0	102.0	101.9
A13	102.5	102.6	102.7	101.7	101.8	101.8	102.5	102.6	102.6	102.1	102.0	102.0
B: A13	102.6	102.6	102.7	101.8	101.8	101.8	102.5	102.6	102.6	102.1	102.0	102.0
A11	102.5	102.6	102.6	101.8	101.8	101.8	102.4	102.5	102.6	102.1	102.0	102.0
A9	102.6	102.6	102.7	102.0	101.9	101.8	102.5	102.5	102.6	102.1	102.2	102.2
C: A9	102.6	102.7	102.7	102.0	102.0	101.9	102.5	102.5	102.6	102.1	102.2	102.2
A7	102.5	102.6	102.6	102.0	102.1	102.0	102.4	102.5	102.5	102.0	102.1	102.1
A5	102.6	102.6	102.7	102.1	102.1	102.1	102.5	102.5	102.5	102.1	102.1	102.1
D: A5	102.6	102.6	102.7	102.0	102.1	102.1	102.5	102.5	102.5	102.0	102.1	102.1
A3	102.6	102.6	102.6	102.1	102.1	102.0	102.4	102.4	102.5	101.9	102.0	102.1
A1	102.6	102.6	102.6	102.0	102.2	102.1	102.4	102.4	102.4	101.9	102.0	102.0

Bundesrepublik Deutschland

3. Change in civil servants' pay

Average per grade

a. Index at current prices

grade	single		married, two children		both	
	gross	net	gross	net	gross	net
A: B9	103.2	102.3	103.1	102.3	103.1	102.3
B6	103.2	102.4	103.1	102.2	103.1	102.3
B3	103.2	102.3	103.0	102.2	103.1	102.3
A16	103.1	102.3	103.0	101.7	103.0	102.0
A15	103.1	102.3	103.1	102.4	103.1	102.3
A13	103.0	102.2	103.0	102.4	103.0	102.3
B: A13	103.0	102.2	103.0	102.4	103.0	102.3
A11	103.0	102.2	102.9	102.5	103.0	102.4
A9	103.0	102.3	102.9	102.6	103.0	102.5
C: A9	103.1	102.4	103.0	102.6	103.0	102.5
A7	103.0	102.4	102.9	102.5	103.0	102.5
A5	103.1	102.5	102.9	102.5	103.0	102.5
D: A5	103.1	102.5	102.9	102.5	103.0	102.5
A3	103.0	102.5	102.9	102.4	102.9	102.5
A1	103.0	102.5	102.8	102.4	102.9	102.4

b. Index at constant prices

grade	single		married, two children		both	
	gross	net	gross	net	gross	net
A: B9	102.7	101.9	102.7	101.9	102.7	101.9
B6	102.7	102.0	102.7	101.8	102.7	101.9
B3	102.7	101.9	102.6	101.8	102.7	101.8
A16	102.6	101.8	102.6	101.3	102.6	101.5
A15	102.7	101.9	102.6	102.0	102.7	101.9
A13	102.6	101.8	102.6	102.0	102.6	101.9
B: A13	102.6	101.8	102.6	102.0	102.6	101.9
A11	102.6	101.8	102.5	102.0	102.5	101.9
A9	102.6	101.9	102.5	102.1	102.6	102.0
C: A9	102.6	102.0	102.6	102.2	102.6	102.1
A7	102.6	102.0	102.5	102.1	102.5	102.0
A5	102.6	102.1	102.5	102.1	102.6	102.1
D: A5	102.6	102.1	102.5	102.1	102.6	102.1
A3	102.6	102.1	102.4	102.0	102.5	102.0
A1	102.6	102.1	102.4	102.0	102.5	102.0

Bundesrepublik Deutschland

4. Change in civil servants' pay
Average per category
a. Index at current prices

category	single		married, two children		both	
	gross	net	gross	net	gross	net
A	103.1	102.3	103.1	102.2	103.1	102.3
B	103.0	102.2	103.0	102.4	103.0	102.3
C	103.1	102.4	103.0	102.6	103.0	102.5
D	103.1	102.5	102.9	102.5	103.0	102.5
Total-	103.1	102.3	103.0	102.4	103.1	102.3
Pond.nat :						
Total-	103.1	102.3	103.0	102.4	103.0	102.4
Pond.com :						

b. Index at constant prices

category	single		married, two children		both	
	gross	net	gross	net	gross	net
A	102.7	101.9	102.6	101.8	102.7	101.8
B	102.6	101.8	102.6	102.0	102.6	101.9
C	102.6	102.0	102.5	102.2	102.6	102.1
D	102.6	102.1	102.5	102.1	102.6	102.1
Total-	102.7	101.9	102.6	101.9	102.6	101.9
Pond.nat :						
Total-	102.7	101.9	102.6	102.0	102.6	101.9
Pond.com :						

1. National civil servants' pay
Minimum/mean/maximum per grade
a. Year 1987

grade	single						married, two children					
	min	gross		min	net		min	gross		min	net	
		mean	max		mittel	mean		mean	max		mean	max
A:			25,866			18,995			26,860			23,160
Univer-	7,261	12,035	18,822	6,489	9,994	14,571	8,096	13,020	19,816	8,096	12,321	17,997
sitaire	6,649	9,470	14,304	6,002	8,155	11,573	7,484	10,370	15,298	7,484	9,991	14,277
B:												
Secon-	5,120	6,609	8,819	4,747	5,969	7,673	5,958	7,444	9,697	5,958	7,444	9,420
daire												
C:			6,432			5,827			7,267			7,267
Profes-	4,657	5,332	5,998	4,400	4,924	5,477	5,495	6,113	6,833	5,495	6,113	6,833
sionel												
D:												
Pri-	4,369	4,831	5,312	4,188	4,519	4,907	5,206	5,669	6,094	5,206	5,669	6,094
maire												

b. Year of comparison 1986

grade	single						married, two children					
	min	gross		min	net		min	gross		min	net	
		mean	max		mittel	mean		mean	max		mean	max
A:			26,083			18,876			27,067			23,179
Univer-	7,321	12,136	18,980	6,509	9,989	14,539	8,148	13,113	19,965	7,983	12,391	18,031
sitaire	6,705	9,550	14,424	6,028	8,171	11,481	7,532	10,442	15,409	7,532	10,049	14,344
B:												
Secon-	5,161	6,665	8,893	4,772	5,997	7,687	5,991	7,492	9,764	5,991	7,392	9,439
daire												
C:			6,486			5,853			7,313			7,231
Profes-	4,695	5,376	6,048	4,401	4,952	5,502	5,524	6,205	6,875	5,524	6,205	6,823
sionel												
D:												
Pri-	4,403	4,831	5,355	4,196	4,497	4,934	5,233	5,660	6,185	5,233	5,660	6,185
maire												

France

=====

2. Change in civil servants' pay
Minimum/mean/maximum per grade
a. Index at current prices

grade	single						married, two children					
	min	gross mean	max	min	net mittel	mean	min	gross mean	max	min	net mean	max
A:			99.2			100.6			99.2			99.9
Univer-	99.2	99.2	99.2	99.7	100.1	100.2	99.4	99.3	99.3	101.4	99.4	99.8
sitaire	99.2	99.2	99.2	99.6	99.8	100.8	99.4	99.3	99.3	99.4	99.4	99.5
B:												
Secon-	99.2	99.2	99.2	99.5	99.5	99.8	99.4	99.4	99.3	99.4	100.7	99.8
daire												
C:												
Profes-	99.2	99.2	99.2	100.0	99.4	99.5	99.5	98.5	99.4	99.5	98.5	100.1
sionel			99.2			99.6			99.4			100.5
D:												
Pri-	99.2	100.0	99.2	99.8	100.5	99.5	99.5	100.2	98.5	99.5	100.2	98.5
maire												

b. Index at constant prices
(Consumer Price Index: 103.3)

grade	single						married, two children					
	min	gross mean	max	min	net mittel	mean	min	gross mean	max	min	net mean	max
A:			96.0			97.4			96.0			96.7
Univer-	96.0	96.0	96.0	96.5	96.8	97.0	96.2	96.1	96.1	98.1	96.2	96.6
sitaire	96.0	96.0	96.0	96.4	96.6	97.5	96.2	96.1	96.1	96.2	96.2	96.3
B:												
Secon-	96.0	96.0	96.0	96.3	96.3	96.6	96.2	96.2	96.1	96.2	97.5	96.6
daire												
C:												
Profes-	96.0	96.0	96.0	96.8	96.2	96.3	96.3	95.3	96.2	96.3	95.3	96.9
sionel			96.0			96.3			96.2			97.3
D:												
Pri-	96.0	96.8	96.0	96.6	97.2	96.2	96.3	96.9	95.4	96.3	96.9	95.4
maire												

France

=====

3. Changes in civil servants' pay

Average per grade

a. Index at current prices

grade	single		married, two children		both	
	gross	net	gross	net	gross	net
A:	99.2	100.6	99.2	99.9	99.2	100.2
Univer- sitaine	99.2	100.1	99.3	100.0	99.2	100.0
	99.2	100.2	99.3	99.5	99.2	99.8
B:						
Secon- daire	99.2	99.6	99.4	100.0	99.3	99.8
C:						
Profes- sionel	99.2	99.6	99.4	100.5	99.3	100.1
	99.2	99.6	99.1	99.4	99.2	99.5
D:						
Pri- maire	99.5	99.9	99.4	99.4	99.4	99.6

b. Index at constant prices

grade	single		married, two children		both	
	gross	net	gross	net	gross	net
A:	96.0	97.4	96.0	96.7	96.0	97.0
Univer- sitaine	96.0	96.8	96.1	96.8	96.0	96.8
	96.0	97.0	96.1	96.2	96.0	96.6
B:						
Secon- daire	96.0	96.4	96.2	96.8	96.1	96.6
C:						
Profes- sionel	96.0	96.3	96.2	97.3	96.1	96.8
	96.0	96.4	95.9	96.2	96.0	96.3
D:						
Pri- maire	96.3	96.7	96.2	96.2	96.2	96.4

France

=====

4. Change in civil servants' pay

Average per category

a. Index at current prices

category	single		married, two children		both	
	gross	net	gross	net	gross	net
A:	99.2	100.2	99.3	99.8	99.2	100.0
B:	99.2	99.6	99.4	100.0	99.3	99.8
C:	99.2	99.6	99.2	99.7	99.2	99.7
D:	99.5	99.9	99.4	99.4	99.4	99.6
Total (pond.nat.)	99.2	99.8	99.3	99.8	99.2	99.8
Total (pond.comm.)	99.2	100.0	99.3	99.8	99.2	99.9

b. Index at constant prices

category	single		married, two children		both	
	gross	net	gross	net	gross	net
A:	96.0	97.0	96.1	96.6	96.0	96.8
B:	96.0	96.4	96.2	96.8	96.1	96.6
C:	96.0	96.4	96.0	96.5	96.0	96.5
D:	96.3	96.7	96.2	96.2	96.2	96.4
Total (pond.nat.)	96.0	96.6	96.1	96.6	96.0	96.6
Total (pond.comm.)	96.0	96.7	96.1	96.6	96.0	96.7

1. National civil servants' pay
Minimum/maximum per grade
a. Year 1987

cate- gory	grade	single				married, two children			
		gross		net		gross		net	
		min	max	min	max	min	max	min	max
A:	Dirigente general	4,213,843	4,750,829	2,822,809	3,133,586	4,213,843	4,750,829	2,868,809	3,179,586
	Dirigente super.	3,528,585	4,083,119	2,413,396	2,744,548	3,528,585	4,083,119	2,459,396	2,790,548
	I. Dirigente	2,627,588	3,353,994	1,874,755	2,304,599	2,627,588	3,353,994	1,920,755	2,350,599
	Direttore a.Div. VIII:	1,846,352	2,054,893	1,362,132	1,498,124	1,965,632	2,114,173	1,527,412	1,603,404
	Direttore Sezioni VII:	1,670,863	1,844,196	1,246,707	1,359,740	1,790,143	1,963,476	1,411,987	1,525,021
B:	Segretario princ. VI:	1,560,272	1,679,439	1,173,907	1,251,617	1,709,552	1,798,719	1,369,187	1,416,897
C:	Coadiutore princ. V:	1,470,329	1,574,329	1,114,723	1,182,543	1,619,609	1,693,609	1,310,003	1,347,823
	Coadiutore IV:	1,411,332	1,506,665	1,075,945	1,138,113	1,560,612	1,655,945	1,271,225	1,333,393
D:	Comesso Capo III:	1,343,517	1,425,850	1,031,270	1,084,961	1,492,797	1,575,130	1,226,550	1,280,241
	Comesso II:	1,311,063	1,389,063	1,009,952	1,060,818	1,460,343	1,538,343	1,205,232	1,256,097

b. Year of comparison 1986

cate- gory	grade	single				married, two children			
		gross		net		gross		net	
		min	max	min	max	min	max	min	max
A:	Dirigente general	4,133,427	4,670,413	2,773,530	3,089,533	4,133,427	4,670,413	2,819,530	3,135,533
	Dirigente super.	3,457,511	4,012,045	2,369,841	2,700,994	3,457,511	4,012,045	2,415,841	2,746,994
	I. Dirigente	2,558,485	3,258,467	1,838,189	2,251,077	2,558,485	3,258,467	1,884,189	2,297,077
	Direttore a.Div. VIII:	1,655,602	1,872,266	1,236,881	1,378,171	1,755,122	1,911,786	1,380,710	1,463,019
	Direttore Sezioni VII:	1,520,158	1,702,159	1,147,602	1,266,288	1,619,678	1,801,679	1,291,431	1,410,117
B:	Segretario princ. VI:	1,413,971	1,533,138	1,077,696	1,155,406	1,543,491	1,632,658	1,251,014	1,299,235
C:	Coadiutore princ. V:	1,342,627	1,448,360	1,030,659	1,099,609	1,472,147	1,577,880	1,203,977	1,272,927
	Coadiutore IV:	1,301,850	1,397,762	1,003,774	1,066,320	1,431,370	1,527,282	1,177,092	1,239,638
D:	Comesso Capo III:	1,257,849	1,345,556	974,640	1,031,835	1,387,369	1,475,076	1,147,958	1,205,153
	Comesso II:	1,220,307	1,298,307	950,012	1,000,877	1,349,827	1,427,827	1,123,330	1,174,195

Italia

=====

2. Change in civil servants' pay

Minimum/maximum per grade

a. Index at current prices

cate- gory	grade	single				married, two children			
		gross		net		gross		net	
		min	max	min	max	min	max	min	max
A:	Dirigente general	101.9	101.7	101.8	101.4	101.9	101.7	101.7	101.4
	Dirigente super.	102.1	101.8	101.8	101.6	102.1	101.8	101.8	101.6
	I. Dirigente	102.7	102.9	102.0	102.4	102.7	102.9	101.9	102.3
	Direttore a. Div. VIII:	111.5	109.8	110.1	108.7	112.0	110.6	110.6	109.6
	Direttore Sezioni VII:	109.9	108.3	108.6	107.4	110.5	109.0	109.3	108.1
B:	Segretario princ. VI:	110.3	109.5	108.9	108.3	110.8	110.2	109.4	109.1
C:	Coadiutore princ. V:	109.5	108.7	108.2	107.5	110.0	107.3	108.8	105.9
	Coadiutore IV:	108.4	107.8	107.2	106.7	109.0	108.4	108.0	107.6
D:	Commesso Capo III:	106.8	106.0	105.8	105.1	107.6	106.8	106.8	106.2
	Commesso II:	107.4	107.0	106.3	106.0	108.2	107.7	107.3	107.0

b. Index at constant prices

(Consumer Price Index: 104.3)

cate- gory	grade	single				married, two children			
		gross		net		gross		net	
		min	max	min	max	min	max	min	max
A:	Dirigente general	97.8	97.5	97.6	97.3	97.8	97.5	97.6	97.2
	Dirigente super.	97.9	97.6	97.7	97.4	97.9	97.6	97.6	97.4
	I. Dirigente	98.5	98.7	97.8	98.2	98.5	98.7	97.8	98.1
	Direttore a. Div. VIII:	106.9	105.2	105.6	104.2	107.4	106.0	106.1	105.1
	Direttore Sezioni VII:	105.4	103.9	104.2	103.0	106.0	104.5	104.8	103.7
B:	Segretario princ. VI:	105.8	105.0	104.5	103.9	106.2	105.6	104.9	104.6
C:	Coadiutore princ. V:	105.0	104.2	103.7	103.1	105.5	102.9	104.3	101.5
	Coadiutore IV:	104.0	103.4	102.8	102.3	104.5	104.0	103.6	103.1
D:	Commesso Capo III:	102.4	101.6	101.5	100.8	103.2	102.4	102.5	101.9
	Commesso II:	103.0	102.6	101.9	101.6	103.7	103.3	102.9	102.6

Italia

=====

3. Change in civil servants' pay
Average per grade
a. Index at current prices

cate- gory	grade	single		married, two children		both	
		gross	net	gross	net	gross	net
A	Dirigente general	101.8	101.6	101.8	101.6	101.8	101.6
	Dirigente super.	101.9	101.7	101.9	101.7	101.9	101.7
	I. Dirigente	102.8	102.2	102.8	102.2	102.8	102.2
	Direttore a.Div. VIII:	110.6	109.4	111.3	110.1	110.9	109.8
	Direttore Sezioni VII:	109.1	108.0	109.7	108.7	109.4	108.4
B:	Segretario princ. VI:	109.9	108.6	110.5	109.2	110.2	109.0
C:	Coadiutore princ. V:	109.1	107.8	108.6	107.3	108.8	107.6
	Coadiutore IV:	108.1	107.0	108.7	107.8	108.4	107.4
D:	Commesso Capo III:	106.4	105.5	107.2	106.5	106.8	106.0
	Commesso II:	107.2	106.1	108.0	107.1	107.6	106.7

b. Index at constant prices

cate- gory	grade	single		married, two children		both	
		gross	net	gross	net	gross	net
A:	Dirigente general	97.6	97.4	97.6	97.4	97.6	97.4
	Dirigente super.	97.7	97.5	97.7	97.5	97.7	97.5
	I. Dirigente	98.6	98.0	98.6	98.0	98.6	98.0
	Direttore a.Div. VIII:	106.0	104.9	106.7	105.6	106.4	105.2
	Direttore Sezioni VII:	104.6	103.5	105.2	104.2	104.9	103.9
B:	Segretario princ. VI:	105.4	104.2	105.9	104.8	105.7	104.5
C:	Coadiutore princ. V:	104.6	103.4	104.2	102.9	104.4	103.1
	Coadiutore IV:	103.6	102.6	104.3	103.3	104.0	103.0
D:	Commesso Capo III:	102.0	101.1	102.8	102.2	102.4	101.7
	Commesso II:	102.8	101.8	103.5	102.7	103.2	102.3

Italia

=====

4. Change in of civil servants' pay

Average per category

a. Index at current prices

category	single		married, two children		both	
	gross	net	gross	net	gross	net
A	106.8	106.0	107.3	106.6	107.0	106.4
B	109.9	108.6	110.5	109.2	110.2	109.0
C	108.2	107.1	108.7	107.7	108.5	107.4
D	106.9	105.9	107.6	106.9	107.3	106.4
Total (pond.nat.)	107.8	106.8	108.4	107.5	108.1	107.2
Total (pond.com.)	107.8	106.8	108.4	107.5	108.1	107.2

b. Index at constant prices

category	single		married, two children		both	
	gross	net	gross	net	gross	net
A	102.4	101.7	102.9	102.3	102.6	102.0
B	105.4	104.2	105.9	104.8	105.7	104.5
C	103.8	102.7	104.2	103.3	104.0	103.0
D	102.5	101.5	103.2	102.5	102.9	102.0
Total (pond.nat.)	103.4	102.4	103.9	103.1	103.7	102.8
Total (pond.com.)	103.4	102.5	103.9	103.1	103.7	102.8

1. National civil servants' pay
Minimum/maximum per grade
a. Year 1987

grade	single					married, two children				
	min	gross		net		min	gross		net	
		max	min	max	min	mean	max	min	mean	max
A:	153	8937.00	11093.76	4678.96	5374.46	9187.04	11343.80	5231.30	5963.20	
	150	7017.84	8698.32	3878.80	4589.20	7267.88	8948.36	4438.77	5128.24	
	130	5081.40	6505.92	3079.69	3635.30	5331.44	6755.96	3554.38	4118.84	
B:	114	4338.36	5638.68	2770.19	3283.74	4588.40	5888.72	3198.23	3793.71	
	89	3451.68	4425.84	2343.65	2824.28	3701.72	4675.88	2771.98	3252.22	
	57	2609.39	3532.68	1919.36	2382.53	2859.43	3782.72	2309.61	2802.85	
C:	45	2376.39	3367.44	1786.20	2303.75	2626.43	3617.48	2160.45	2727.80	
	32	2332.39	3196.80	1763.33	2220.98	2582.43	3446.84	2134.68	2636.66	
	18	2286.39	3029.40	1740.09	2140.67	2536.43	3279.44	2108.84	2548.00	
D:	18	2286.39	3029.40	1740.09	2140.67	2536.43	3279.44	2108.84	2548.00	
	1	2151.39	2537.39	1670.95	1879.13	2401.43	2787.43	2033.21	2264.28	

b. Year of comparison 1986

grade	single					married, two children				
	min	gross		net		min	gross		net	
		max	min	max	min	mean	max	min	mean	max
A:	153	8895.62	11042.40	4575.22	5275.70	9151.53	11298.30	5133.32	5864.70	
	150	6985.35	8658.05	3806.26	4493.54	7241.25	8913.95	4366.56	5033.64	
	130	5057.87	6475.80	3029.07	3573.72	5313.78	6731.70	3506.17	4059.12	
B:	114	4318.28	5612.57	2740.05	3226.18	4574.18	5868.48	3170.85	3737.55	
	89	3435.70	4405.35	2319.65	2781.14	3691.60	4661.25	2752.28	3211.74	
	57	2609.39	3516.32	1909.32	2357.51	2865.29	3772.23	2305.63	2794.18	
C:	45	2376.39	3351.85	1776.60	2278.69	2632.29	3607.75	2157.21	2707.36	
	32	2332.39	3182.00	1754.18	2197.96	2588.29	3437.90	2131.99	2618.21	
	18	2286.39	3015.37	1731.45	2119.31	2542.29	3271.28	2106.66	2531.14	
D:	18	2286.39	3015.37	1731.45	2119.31	2542.29	3271.28	2106.66	2531.14	
	1	2151.39	2537.39	1663.79	1867.93	2407.29	2793.29	2031.71	2259.54	

Nederland

=====

2. Change in civil servants' pay
Minimum/maximum per grade
a. Index at current prices

grade	min	single		net		married, two children		gross		net	
		gross	max	min	max	min	max	min	mean	max	mean
A: 153	100.5	100.5	102.3	101.9	100.4	100.4	101.9	101.7			
150	100.5	100.5	101.9	102.1	100.4	100.4	101.7	101.9			
130	100.5	100.5	101.7	101.7	100.3	100.4	101.4	101.5			
B: 114	100.5	100.5	101.1	101.8	100.3	100.3	100.9	101.5			
89	100.5	100.5	101.0	101.6	100.3	100.3	100.7	101.3			
57	100.0	100.5	100.5	101.1	99.8	100.3	100.2	100.3			
C: 45	100.0	100.5	100.5	101.1	99.8	100.3	100.2	100.8			
32	100.0	100.5	100.5	101.0	99.8	100.3	100.1	100.7			
18	100.0	100.5	100.5	101.0	99.8	100.2	100.1	100.7			
D: 18	100.0	100.5	100.5	101.0	99.8	100.2	100.1	100.7			
1	100.0	100.0	100.4	100.6	99.8	99.8	100.1	100.2			

b. Index at constant prices
(Consumer Price Index: 99.6)

grade	min	single		net		married, two children		gross		net	
		gross	max	min	max	min	max	min	mean	max	mean
A: 153	100.8	100.8	102.6	102.2	100.8	100.8	102.3	102.1			
150	100.8	100.8	102.3	102.5	100.7	100.8	102.0	102.3			
130	100.8	100.8	102.0	102.1	100.7	100.7	101.7	101.8			
B: 114	100.8	100.8	101.5	102.2	100.7	100.7	101.2	101.9			
89	100.8	100.8	101.4	101.9	100.6	100.7	101.1	101.6			
57	100.4	100.8	100.9	101.4	100.2	100.6	100.5	100.7			
C: 45	100.4	100.8	100.9	101.5	100.1	100.6	100.5	101.1			
32	100.4	100.8	100.9	101.4	100.1	100.6	100.5	101.1			
18	100.4	100.8	100.9	101.4	100.1	100.6	100.5	101.0			
D: 18	100.4	100.8	100.9	101.4	100.1	100.6	100.5	101.0			
1	100.4	100.4	100.8	101.0	100.1	100.2	100.4	100.6			

Nederland

=====

3. Change in civil servants' pay

Average per grade

a. Index at current prices

grade	single		married, two children		both	
	gross	net	gross	net	gross	net
A: 153	100.5	102.1	100.4	101.8	100.4	101.9
150	100.5	102.0	100.4	101.8	100.4	101.9
130	100.5	101.7	100.3	101.4	100.4	101.6
B: 114	100.5	101.5	100.3	101.2	100.4	101.3
89	100.5	101.3	100.3	101.0	100.4	101.2
57	100.3	100.8	100.1	100.2	100.2	100.5
C: 45	100.3	100.9	100.1	100.5	100.2	100.7
32	100.3	100.8	100.1	100.4	100.2	100.6
18	100.3	100.8	100.0	100.4	100.1	100.6
D: 18	100.3	100.8	100.0	100.4	100.1	100.6
1	100.0	100.5	99.8	100.1	99.9	100.3

b. Index at constant prices

grade	single		married, two children		both	
	gross	net	gross	net	gross	net
A: 153	100.8	102.4	100.8	102.2	100.8	102.3
150	100.8	102.4	100.7	102.2	100.8	102.3
130	100.8	102.1	100.7	101.8	100.8	101.9
B: 114	100.8	101.8	100.7	101.6	100.8	101.7
89	100.8	101.7	100.7	101.4	100.7	101.5
57	100.6	101.2	100.4	100.6	100.5	100.9
C: 45	100.6	101.2	100.4	100.9	100.5	101.0
32	100.6	101.2	100.4	100.8	100.5	101.0
18	100.6	101.2	100.4	100.8	100.5	100.9
D: 18	100.6	101.2	100.4	100.8	100.5	100.9
1	100.4	100.9	100.1	100.5	100.3	100.7

Nederland
=====

4. Change in of civil servants' pay
Average per category
a. Index at current prices

cate- gory :	single		married, two children		both	
	gross	net	gross	net	gross	net
A	100.5	101.8	100.4	101.5	100.4	101.7
B	100.4	101.1	100.2	100.7	100.3	100.9
-						
C+D	100.3	100.8	100.0	100.4	100.1	100.6
Total (pond.nat.)	100.3	101.1	100.2	100.7	100.3	100.9
Total (pond.com.)	100.4	101.5	100.3	101.2	100.4	101.4

b. Index at constant prices

cate- gory :	single		married, two children		both	
	gross	net	gross	net	gross	net
A	100.8	102.2	100.7	101.9	100.8	102.0
B	100.8	101.5	100.6	101.1	100.7	101.3
-						
C+D	100.6	101.2	100.4	100.8	100.5	101.0
Total (pond.nat.)	100.7	101.4	100.5	101.1	100.6	101.2
Total (pond.com.)	100.8	101.9	100.7	101.6	100.7	101.7

=====

1. National civil servants' pay
Minimum/maximum per grade
a. Year 1987

cate- gory	grade	single				married, two children			
		gross		net		gross		net	
		min	max	min	max	min	max	min	max
16/1	Directeur General	139,480	183,558	73,086	90,344	139,480	183,558	84,832	102,091
A: 13/2	Directeur	84,005	128,083	48,917	68,320	84,005	128,083	61,163	80,066
10/1	Secrétaire -								
10/5	d'administration	62,901	99,496	39,488	56,076	62,901	99,496	51,734	68,323
24/1	Chef d'admin.	54,820	81,467	35,820	47,727	55,420	81,467	48,386	59,974
B: 22/4	Sous-chef bureau	48,063	72,251	32,432	43,924	49,275	72,251	45,361	56,170
20/1	Redacteur	40,918	67,175	28,727	41,440	42,119	67,175	41,634	53,687
34/1	Commis chef	44,067	58,760	30,375	37,718	45,268	58,760	43,293	49,965
C: 32/1	Commis principal	38,666	51,615	27,502	34,219	39,867	52,216	40,247	46,802
30/1	Commis	37,936	50,277	27,087	33,540	38,952	50,878	39,693	46,123
44/1	Agent en chef								
D: 42/3	Chef huissier	39,345	47,848	27,868	32,314	40,547	49,049	40,664	45,270
40/2	Huissier	37,936	44,108	27,087	30,412	37,805	45,309	39,078	43,330

*****1a*****

b. Year of comparison 1986

cate- gory	grade	single				married, two children			
		gross		net		gross		net	
		min	max	min	max	min	max	min	max
16/1	Directeur General	139,480	183,558	72,622	89,677	139,480	183,558	84,119	101,173
A: 13/2	Directeur	84,005	128,083	48,662	67,888	84,005	128,083	60,659	79,384
10/1	Secrétaire -								
10/5	d'administration	62,901	99,496	39,300	55,780	62,901	99,496	51,296	67,776
24/1	Chef d'admin.	54,820	81,467	35,652	47,479	55,420	81,467	47,966	59,475
B: 22/4	Sous-chef bureau	48,063	72,251	32,259	43,711	49,275	72,251	44,947	55,707
20/1	Redacteur	40,918	67,175	28,533	41,241	42,119	67,175	41,227	53,237
34/1	Commis chef	44,067	58,760	30,177	37,540	45,268	58,760	42,854	49,536
C: 32/1	Commis principal	38,666	51,615	27,310	34,069	39,867	52,216	39,843	46,403
30/1	Commis	37,786	50,277	26,831	33,381	38,952	50,878	39,269	45,718
44/1	Agent en chef								
D: 42/3	Chef huissier	39,345	47,406	27,676	31,927	40,547	48,607	40,259	44,604
40/2	Huissier	37,786	43,666	26,831	29,964	37,805	44,867	38,637	42,678

*****1b*****

Belgique

2. Change in civil servants' pay
Minimum/maximum per grade
a. Index at current prices

cate- gory	grade	single				married, two children			
		gross		net		gross		net	
		min	max	min	max	min	max	min	max
16/1	Directeur General	100.0	100.0	100.6	100.7	100.0	100.0	100.8	100.9
A: 13/2	Directeur	100.0	100.0	100.5	100.6	100.0	100.0	100.8	100.9
10/1	Secrtaire -								
10/5	d'administration	100.0	100.0	100.5	100.5	100.0	100.0	100.9	100.8
24/1	Chef d'admin.								
B: 22/4	Sous-chef bureau	100.0	100.0	100.5	100.5	100.0	100.0	100.9	100.8
20/1	Redacteur	100.0	100.0	100.7	100.5	100.0	100.0	101.0	100.8
34/1	Commis chef	100.0	100.0	100.7	100.5	100.0	100.0	101.0	100.9
C: 32/1	Commis principal	100.0	100.0	100.7	100.4	100.0	100.0	101.0	100.9
30/1	Commis	100.4	100.0	101.0	100.5	100.0	100.0	101.1	100.9
44/1	Agent en chef								
D: 42/3	Chef huissier	100.0	100.9	100.7	101.2	100.0	100.9	101.0	101.5
40/2	Huissier	100.4	101.0	101.0	101.5	100.0	101.0	101.1	101.5

*****2a*****

b. Index at constant prices
(Consumer Price Index: 101.7)

cate- gory	grade	single				married, two children			
		gross		net		gross		net	
		min	max	min	max	min	max	min	max
16/1	Directeur General	98.4	98.4	99.0	99.1	98.4	98.4	99.2	99.2
A: 13/2	Directeur	98.4	98.4	98.9	99.0	98.4	98.4	99.2	99.2
10/1	Secrtaire -								
10/5	d'administration	98.4	98.4	98.8	98.9	98.4	98.4	99.2	99.1
24/1	Chef d'admin.								
B: 22/4	Sous-chef bureau	98.4	98.4	98.9	98.8	98.4	98.4	99.3	99.2
20/1	Redacteur	98.4	98.4	99.0	98.8	98.4	98.4	99.3	99.2
34/1	Commis chef	98.4	98.4	99.0	98.8	98.4	98.4	99.4	99.2
C: 32/1	Commis principal	98.4	98.4	99.0	98.8	98.4	98.4	99.4	99.2
30/1	Commis	98.7	98.4	99.3	98.8	98.4	98.4	99.4	99.2
44/1	Agent en chef								
D: 42/3	Chef huissier	98.4	99.3	99.0	99.5	98.4	99.2	99.3	99.8
40/2	Huissier	98.7	99.3	99.3	99.8	98.4	99.3	99.5	99.9

*****2b*****

Belgique

=====

3. Change in of civil servants' pay

Average per grade

a. Index at current prices

cate- gory	grade	single		married, two children		both	
		gross	net	gross	net	gross	net
	16/1 Directeur General	100.0	100.7	100.0	100.9	100.0	100.8
A:	13/2 Directeur	100.0	100.6	100.0	100.8	100.0	100.7
	10/1 Secrétaire -						
	10/5 d'administration	100.0	100.5	100.0	100.8	100.0	100.7
	24/1 Chef d'admin.	100.0	100.5	100.0	100.9	100.0	100.7
B:	22/4 Sous-chef bureau	100.0	100.5	100.0	100.9	100.0	100.7
	20/1 Rédacteur	100.0	100.6	100.0	100.9	100.0	100.8
	34/1 Commis chef	100.0	100.6	100.0	100.9	100.0	100.8
C:	32/1 Commis principal	100.0	100.6	100.0	100.9	100.0	100.8
	30/1 Commis	100.2	100.7	100.0	101.0	100.1	100.9
	44/1 Agent en chef						
D:	42/3 Chef huissier	100.5	101.0	100.5	101.3	100.5	101.1
	40/2 Huissier	100.7	101.2	100.5	101.3	100.6	101.3

*****3a*****

b. Index at constant prices

cate- gory	grade	single		married, two children		both	
		gross	net	gross	net	gross	net
	16/1 Directeur General	98.4	99.0	98.4	99.2	98.4	99.1
A:	13/2 Directeur	98.4	98.9	98.4	99.2	98.4	99.1
	10/1 Secrétaire -						
	10/5 d'administration	98.4	98.9	98.4	99.2	98.4	99.0
	24/1 Chef d'admin.	98.4	98.8	98.4	99.2	98.4	99.0
B:	22/4 Sous-chef bureau	98.4	98.9	98.4	99.2	98.4	99.1
	20/1 Rédacteur	98.4	98.9	98.4	99.2	98.4	99.1
	34/1 Commis chef	98.4	98.9	98.4	99.3	98.4	99.1
C:	32/1 Commis principal	98.4	98.9	98.4	99.3	98.4	99.1
	30/1 Commis	98.5	99.0	98.4	99.3	98.4	99.2
	44/1 Agent en chef						
D:	42/3 Chef huissier	98.9	99.3	98.8	99.6	98.8	99.5
	40/2 Huissier	99.1	99.6	98.9	99.7	99.0	99.6

*****3b*****

Belgique

=====

4. Change in civil servants' pay
Average per category
a. Index at current prices

category	single		married, two children		both	
	gross	net	gross	net	gross	net
A:	100.0	100.5	100.0	100.8	100.0	100.7
B:	100.0	100.5	100.0	100.9	100.0	100.7
C:	100.0	100.6	100.0	100.9	100.0	100.8
D:	100.5	101.0	100.5	101.3	100.5	101.2
Total (pond. nat.)	100.1	100.6	100.0	100.9	100.0	100.8
Total (pond. com.)	100.0	100.6	100.0	100.9	100.0	100.8

*****4a*****

b. Index at constant prices

category	single		married, two children		both	
	gross	net	gross	net	gross	net
A:	98.4	98.9	98.4	99.2	98.4	99.0
B:	98.4	98.9	98.4	99.2	98.4	99.1
C:	98.4	98.9	98.4	99.3	98.4	99.1
D:	98.9	99.3	98.8	99.6	98.9	99.5
Total (pond. nat.)	98.4	98.9	98.4	99.3	98.4	99.1
Total (pond. com.)	98.4	98.9	98.4	99.2	98.4	99.1

*****4b*****

=====

1. National civil servants' pay

Minimum/maximum per grade

a. Year 1987

grade	single				married, two children			
	gross		net		gross		net	
	min	max	min	max	min	max	min	max
A: 17	136,195	193,459	80,916	103,787	148,362	205,626	116,538	144,168
16	126,909	183,864	77,301	99,948	139,076	196,031	111,314	140,063
15	117,623	164,053	73,687	92,080	129,790	176,220	105,965	131,103
14	111,432	159,410	71,296	90,222	123,475	171,577	102,225	128,800
13	99,051	159,410	66,272	90,222	110,352	171,577	94,110	128,800
12	94,408	126,909	64,279	77,301	105,430	139,076	90,946	111,314
B: 13	99,051	144,243	66,272	84,153	110,352	156,410	94,110	120,941
12	89,765	131,552	62,200	79,109	100,694	143,719	87,881	113,925
11	82,336	122,266	58,708	75,495	93,265	134,433	82,930	108,675
10	74,907	112,051	54,966	71,529	85,836	124,132	77,252	102,598
9	67,478	112,051	50,995	71,529	78,407	124,132	71,459	102,598
8	62,835	92,551	48,371	63,419	73,764	103,480	67,769	89,699
7	57,264	79,550	45,052	57,376	68,193	90,479	63,273	80,815
8bis	65,621	104,932	49,931	68,693	76,550	116,585	70,004	98,025
C: 8	62,835	96,265	48,371	65,054	73,764	107,398	67,769	92,242
7	54,478	85,122	43,379	60,061	65,407	96,051	60,965	84,804
6	50,454	75,526	40,855	55,325	61,383	86,455	57,635	77,724
4	47,049	69,335	38,652	51,997	57,978	80,264	54,754	72,931
D: 6	50,454	78,312	40,855	56,714	61,383	89,241	57,635	79,870
5	47,668	75,526	39,049	55,325	58,597	86,455	55,287	77,724
4	46,430	69,335	38,256	51,997	57,359	80,264	54,231	72,931
3	43,025	62,526	35,991	48,199	53,954	73,455	51,355	67,522
2	41,787	53,240	35,159	42,618	52,716	64,169	50,183	59,944
1	37,453	48,597	32,141	39,677	48,382	59,526	46,081	56,072

b. Year of comparison 1986

grade	single				married, two children			
	gross		net		gross		net	
	min	max	min	max	min	max	min	max
A: 17	133,516	179,034	75,092	92,133	145,522	191,040	108,643	128,470
16	124,413	169,930	71,704	88,696	136,419	181,936	104,215	124,805
15	115,310	156,275	68,266	83,599	127,316	168,281	99,545	119,003
14	109,241	142,620	66,013	78,442	121,126	154,626	96,181	112,974
13	97,103	133,516	61,225	75,092	108,260	145,522	88,894	108,643
12	87,999	124,413	57,619	71,704	98,792	136,419	83,168	104,215
B: 13	97,103	133,516	61,225	75,092	108,260	145,522	88,894	108,643
12	87,999	124,413	57,619	71,704	98,792	136,419	83,168	104,215
11	80,717	115,310	54,559	68,266	91,510	127,316	78,571	99,545
10	73,434	102,565	51,312	63,435	84,227	114,049	73,755	92,224
9	66,151	95,282	47,894	60,547	76,944	106,329	68,799	87,762
8	61,599	90,730	45,589	58,735	72,392	101,523	65,342	84,857
7	53,406	77,986	41,130	53,317	64,199	88,779	58,988	76,769
8bis	64,330	97,103	47,042	61,225	75,123	108,260	67,424	88,894
8	61,599	90,730	45,589	58,735	72,392	101,523	65,342	84,857
C: 7	53,406	77,986	41,130	53,317	64,199	88,779	58,988	76,769
6	49,461	74,041	38,803	51,626	60,254	84,834	55,887	74,148
4	43,696	67,972	35,231	48,796	54,489	78,765	51,244	70,042
D: 6	49,461	74,041	38,803	51,626	60,254	84,834	55,887	74,148
5	46,730	71,310	37,140	50,386	57,523	82,103	53,678	72,335
4	43,696	67,972	35,231	48,796	54,489	78,765	51,244	70,042
3	40,055	61,296	32,856	45,438	50,848	72,089	48,261	65,114
2	36,717	52,192	30,656	40,407	47,510	62,585	45,254	58,046
1	32,468	47,641	27,817	37,717	43,261	58,434	41,233	54,420

Luxembourg

=====

2. Change in civil servants' pay

Minimum/maximum per grade

a. Index at current prices

grade	single				married, two children			
	gross		net		gross		net	
	min	max	min	max	min	max	min	max
17	102.0	108.1	107.8	112.6	102.0	107.6	107.3	112.2
16	102.0	108.2	107.8	112.7	101.9	107.7	106.8	112.2
A: 15	102.0	105.0	107.9	110.1	101.9	104.7	106.4	110.2
14	102.0	111.8	108.0	115.0	101.9	111.0	106.3	114.0
13	102.0	119.4	108.2	120.1	101.9	117.9	105.9	118.6
12	107.3	102.0	111.6	107.8	106.7	101.9	109.4	106.8
13	102.0	108.0	108.2	112.1	101.9	107.5	105.9	111.3
12	102.0	105.7	108.0	110.3	101.9	105.4	105.7	109.3
11	102.0	106.0	107.6	110.6	101.9	105.6	105.5	109.2
B: 10	102.0	109.2	107.1	112.8	101.9	108.8	104.7	111.2
9	102.0	117.6	106.5	118.1	101.9	116.7	103.9	116.9
8	102.0	102.0	106.1	108.0	101.9	101.9	103.7	105.7
7	107.2	102.0	109.5	107.6	106.2	101.9	107.3	105.3
8bis	102.0	108.1	106.1	112.2	101.9	107.7	103.8	110.3
8	102.0	106.1	106.1	110.8	101.9	105.8	103.7	108.7
C: 7	102.0	109.2	105.5	112.6	101.9	108.2	103.4	110.5
6	102.0	102.0	105.3	107.2	101.9	101.9	103.1	104.8
4	107.7	102.0	109.7	106.6	106.4	101.9	106.8	104.1
6	102.0	105.8	105.3	109.9	101.9	105.2	103.1	107.7
5	102.0	105.9	105.1	109.8	101.9	105.3	103.0	107.5
D: 4	106.3	102.0	108.6	106.6	105.3	101.9	105.8	104.1
3	107.4	102.0	109.5	106.1	106.1	101.9	106.4	103.7
2	113.8	102.0	114.7	105.5	111.0	101.9	110.9	103.3
1	115.4	102.0	115.5	105.2	111.8	101.9	111.8	103.0

b. Index at constant prices
(Consumer Price Index: 99.7)

grade	single				married, two children			
	gross		net		gross		net	
	min	max	min	max	min	max	min	max
A: 17	102.3	108.4	108.1	113.0	102.3	108.0	107.6	112.6
16	102.3	108.6	108.2	113.1	102.3	108.1	107.2	112.6
15	102.3	105.3	108.3	110.5	102.3	105.1	106.8	110.5
14	102.3	112.1	108.4	115.4	102.3	111.3	106.6	114.4
13	102.3	119.8	108.6	120.5	102.3	118.3	106.2	118.9
12	107.6	102.3	111.9	108.2	107.1	102.3	109.7	107.2
B: 13	102.3	108.4	108.6	112.4	102.3	107.8	106.2	111.7
12	102.3	106.1	108.3	110.7	102.3	105.7	106.0	109.7
11	102.3	106.4	108.0	111.0	102.3	105.9	105.9	109.5
10	102.3	109.6	107.5	113.1	102.2	109.2	105.1	111.6
9	102.3	118.0	106.8	118.5	102.2	117.1	104.2	117.3
8	102.3	102.3	106.4	108.3	102.2	102.3	104.1	106.1
7	107.6	102.3	109.9	108.0	106.6	102.2	107.6	105.6
C: 8bis	102.3	108.4	106.5	112.6	102.2	108.0	104.2	110.6
8	102.3	106.4	106.4	111.1	102.2	106.1	104.1	109.1
7	102.3	109.5	105.8	113.0	102.2	108.5	103.7	110.8
6	102.3	102.3	105.6	107.5	102.2	102.2	103.5	105.2
4	108.0	102.3	110.1	106.9	106.8	102.2	107.2	104.5
D: 6	102.3	106.1	105.6	110.2	102.2	105.5	103.5	108.1
5	102.3	106.3	105.5	110.2	102.2	105.6	103.3	107.8
4	106.6	102.3	108.9	106.9	105.6	102.2	106.2	104.5
3	107.8	102.3	109.9	106.4	106.5	102.2	106.8	104.0
2	114.2	102.3	115.1	105.8	111.3	102.2	111.3	107.6
1	115.7	102.3	115.9	105.5	112.2	102.2	112.1	103.4

Luxembourg

=====

3. Change in civil servants' pay
Average per grade
a. Index at current prices

grade	single		married, two children		both	
	gross	net	gross	net	gross	net
17	105.5	110.5	105.2	110.0	105.3	110.2
16	105.6	110.5	105.3	109.8	105.4	110.1
A. 15	103.7	109.2	103.5	108.5	103.6	108.8
14	107.5	111.8	107.0	110.5	107.3	111.0
13	112.1	114.8	111.1	112.8	111.6	113.6
12	104.2	109.5	104.0	107.9	104.1	108.6
13	105.5	110.3	105.1	108.9	105.3	109.5
12	104.2	109.3	103.9	107.7	104.0	108.3
11	104.4	109.3	104.1	107.6	104.2	108.3
B. 10	106.2	110.2	105.9	108.4	106.1	109.1
9	111.2	113.0	110.5	111.2	110.8	111.9
8	102.0	107.2	101.9	104.8	102.0	105.8
7	104.1	108.5	103.7	106.1	103.9	107.1
8bis	105.6	109.6	105.3	107.5	105.5	108.3
8	104.4	108.7	104.2	106.5	104.3	107.4
C. 7	106.2	109.5	105.5	107.4	105.9	108.3
6	102.0	106.4	101.9	104.1	101.9	105.0
4	104.2	107.9	103.7	105.3	104.0	106.3
6	104.3	107.9	103.8	105.7	104.0	106.6
5	104.4	107.8	103.9	105.6	104.1	106.5
D. 4	103.7	107.4	103.3	104.8	103.5	105.9
3	104.1	107.5	103.6	104.9	103.9	105.9
2	106.9	109.4	105.8	106.6	106.3	107.8
1	107.4	109.6	106.1	106.8	106.7	107.9

b. Index at constant prices

grade	single		married, two children		both	
	gross	net	gross	net	gross	net
17	105.8	110.8	105.5	110.3	105.7	110.5
16	105.9	110.9	105.6	110.1	105.8	110.4
A: 15	104.1	109.5	103.9	108.8	104.0	109.1
14	107.9	112.2	107.3	110.8	107.6	111.4
13	112.4	115.2	111.5	113.2	111.9	114.0
12	104.5	109.8	104.3	108.3	104.4	108.9
13	105.8	110.7	105.5	109.2	105.6	109.8
12	104.5	109.6	104.3	108.0	104.4	108.7
11	104.7	109.6	104.4	107.9	104.5	108.6
B: 10	106.6	110.6	106.2	108.7	106.4	109.5
9	111.6	113.4	110.9	111.5	111.2	112.3
8	102.3	107.5	102.2	105.2	102.3	106.1
7	104.5	108.8	104.1	106.5	104.2	107.4
8bis	106.0	109.9	105.7	107.8	105.8	108.7
8	104.8	109.1	104.5	106.9	104.6	107.8
C: 7	106.6	109.9	105.9	107.7	106.2	108.6
6	102.3	106.7	102.2	104.4	102.3	105.4
4	104.6	108.2	104.1	105.6	104.3	106.7
6	104.6	108.2	104.2	106.1	104.4	107.0
5	104.7	108.2	104.2	105.9	104.4	106.8
D: 4	104.0	107.8	103.6	105.2	103.8	106.2
3	104.5	107.9	104.0	105.2	104.2	106.3
2	107.2	109.8	106.1	107.0	106.6	108.1
1	107.8	109.9	106.5	107.1	107.0	108.3

Luxembourg

=====

4. Change in civil servants' pay

Average per category

a. Index at current prices

category :	single		married, two children		both	
	gross	net	gross	net	gross	net
A :	106.2	110.9	105.8	109.9	106.0	110.3
B :	105.1	109.5	104.8	107.6	104.9	108.4
C :	104.3	108.3	104.0	106.0	104.1	107.0
D :	104.9	108.2	104.3	105.7	104.5	106.7
Total :	105.3	109.6	104.9	107.9	105.1	108.6
(Pond.nat.)						
Total :	105.8	110.1	105.4	108.7	105.6	109.3
(Pond.com.)						

b. Index at constant prices

category :	single		married, two children		both	
	gross	net	gross	net	gross	net
A :	106.6	111.3	106.2	110.3	106.4	110.7
B :	105.5	109.9	105.1	108.0	105.3	108.8
C :	104.6	108.6	104.3	106.4	104.4	107.3
D :	105.2	108.5	104.6	106.0	104.9	107.1
Total :	105.7	110.0	105.3	108.2	105.5	108.9
(Pond.nat.)						
Total :	106.1	110.5	105.7	109.0	105.9	109.6
(Pond.com.)						

United Kingdom

1. National civil servants' pay
Minimum/mean/maximum per grade
a. Year 1987

grade	single						married, two children					
	gross			net			gross			net		
	min	mean	max	min	mittel	mean	min	mean	max	min	mean	max
Grade 2 :	43264		45349	25698		26570	43264		45349	26452		27376
Grade 3 :	33725	35289	36852	21345	22115	22856	33725	35289	36852	22030	22800	23570
Grade 5 :	24739	26849	28215	16746	17889	18629	24739	26849	28215	17363	18506	19246
Grade 7 :	14927	18970	20292	10322	13201	14151	14927	18970	20292	10692	13571	14521
A.T. :	7635	8267	9854	5578	5989	7022	7635	8267	9854	5948	6359	7392
SEO :	12134	14187	15251	8505	9841	10533	12134	14187	15251	8875	10210	10903
HEO :	9831	11404	12448	7007	8030	8709	9831	11404	12448	7377	8400	9079
EO :	5550	8914	9854	4222	6410	7022	5550	8914	9854	4592	6780	7392
CO :	3664	6554	7091	3068	4875	5224	3664	6554	7091	3388	5245	5594
Sen Sec. :	8387	9377	9909	6067	6711	7057	8387	9377	9909	6437	7081	7427
Sec. :	6607	7459	7846	4909	5464	5715	6607	7459	7846	5279	5834	6085
Typist :	4964	5657	6363	3940	4291	4751	4964	5657	6363	4310	4661	5120
CA :	3314	5388	5799	2900	4116	4384	3314	5388	5799	3126	4486	4754
SPT0 :	12313	14221	15309	8621	9863	10570	12313	14221	15309	8991	10233	10940
PT0 :	7930	9934	10474	5770	7074	7425	7930	9934	10474	6140	7444	7795
Tech.Gr.1 :	6388	7379	8370	4767	5412	6056	6388	7379	8370	5137	5781	6426
Msgr. :	5106	5366	5686	4035	4102	4310	5106	5366	5686	4405	4472	4680
P.Kpr :	5832	5939	6141	4405	4475	4606	5832	5939	6141	4775	4845	4976
Driver :	6003			4516		4,319	6003		5,841	4886		4,702
Craftsman :	6461			4814			6461			5187		

b. Year of comparison 1986

grade :	single						married, two children					
	min	gross mean	max	min	net mittel	mean	min	gross mean	max	min	net mean	max
Grade 2 :	40000		42000	23794		24680	40000		42000	24520		25406
Grade 3 :	31000	32500	34000	19549	20288	21027	31000	32500	34000	20209	20948	21687
Grade 5 :	23730	25754	27065	15751	16847	17558	23730	25754	27065	16321	17441	18152
Grade 7 :	14318	18197	19465	9667	12346	13232	14318	18197	19465	10050	12728	13615
A.T. :	7324	7930	9452	5255	5637	6597	7324	7930	9452	5638	6020	6980
SEO :	11639	13609	14629	7977	9220	9863	11639	13609	14629	8360	9603	10246
HEO :	9430	10939	11941	6584	7536	8168	9430	10939	11941	6966	7918	8550
EO :	5250	8551	9452	3947	6029	6597	5250	8551	9452	4329	6412	6980
CO :	3306	6093	6671	2786	4478	4843	3306	6093	6671	3054	4861	5226
Sen Sec. :	8045	8995	9505	5710	6309	6631	8045	8995	9505	6093	6692	7014
Sec. :	6307	7155	7526	4613	5148	5382	6307	7155	7526	4996	5531	5765
Typist :	4664	5357	6063	3670	4014	4460	4664	5357	6063	4033	4397	4842
CA :	3055	4925	5357	2684	3840	4014	3055	4925	5357	2880	4223	4397
SPT0 :	11745	13581	14480	8044	9202	9769	11745	13581	14480	8427	9585	10152
PT0 :	7420	9360	9869	5316	6539	6861	7420	9360	9869	5698	6922	7243
Tech.Gr.1 :	6148	7102	8056	4513	5115	5717	6148	7102	8056	4896	5498	6100
Msgr. :	4806	5066	5386	3763	3831	4032	4806	5066	5386	4145	4213	4415
P.Kpr :	5532	5639	5841	4125	4192	4319	5532	5639	5841	4507	4575	4702
Driver :	5703			4232		4044.00	5703		5510	4615		4419.00
Craftsman :	6116			4493			6116			4876		

United Kingdom

=====

2. Change in civil servants' pay

Minimum/mean/maximum per grade

a. Index at current prices

grade	single						married, two children					
	min	gross mean	max	min	net mittel	mean	min	gross mean	max	min	net mean	max
Grade 2	108.2		108.0	108.0		107.7	108.2		108.0	107.9		107.8
Grade 3	108.8		108.4	109.2		108.7	108.8		108.4	109.0		108.7
Grade 5	104.3	104.3	104.2	106.3	106.2	106.1	104.3	104.3	104.2	106.4	106.1	106.0
Grade 7	104.3	104.2	104.2	106.8	106.9	106.9	104.3	104.2	104.2	106.4	106.6	106.7
A.T.	104.2	104.2	104.3	106.1	106.2	106.4	104.2	104.2	104.3	105.5	105.6	105.9
SE0	104.3	104.2	104.3	106.6	106.7	106.8	104.3	104.2	104.3	106.2	106.3	106.4
ME0	104.3	104.3	104.2	106.4	106.6	106.6	104.3	104.3	104.2	105.9	106.1	106.2
E0	105.7	104.2	104.3	107.0	106.3	106.4	105.7	104.2	104.3	106.1	105.7	105.9
CO	110.8	107.6	106.3	110.1	108.9	107.9	110.8	107.6	106.3	110.9	107.9	107.0
Sen Sec.	104.3	104.2	104.3	106.3	106.4	106.4	104.3	104.2	104.3	105.6	105.8	105.9
Sec.	104.8	104.2	104.3	106.4	106.1	106.2	104.8	104.2	104.3	105.7	105.5	105.6
Typist	106.4	105.6	104.9	107.4	106.9	106.5	106.9	105.6	104.9	106.9	106.0	105.7
CA	108.5	109.4	108.3	108.0	107.2	109.2	108.5	109.4	108.3	108.5	106.2	108.1
SPT0	104.8	104.7	105.7	107.2	107.2	108.2	104.8	104.7	105.7	106.7	106.8	107.8
PT0	106.9	106.1	106.1	108.5	108.2	108.2	106.9	106.1	106.1	107.8	107.5	107.6
Tech.Gr.1	103.9	103.9	103.9	105.6	105.8	105.9	103.9	103.9	103.9	104.9	105.1	105.3
Msgr.	106.2		105.6	107.2		106.9	106.2		105.6	106.3		106.0
P.Kpr	105.4		105.1	106.8		106.6	105.4		105.1	105.9		105.8
Driver	105.3			106.7			105.3			105.9		
Craftsman	105.6			107.1			105.6			106.4		

b. Index at constant prices
(Consumer Price Index: 104.3)

grade :	single						married, two children					
	min	gross		min	net		min	gross		min	net	
		mean	max		mittel	mean		mean	max		mean	max
Grade 2	103.7		103.5	103.6		103.2	103.7		103.5	103.4		103.3
Grade 3	104.3		103.9	104.7		104.2	104.3		103.9	104.5		104.2
Grade 5	100.0	100.0	100.0	101.9	101.8	101.7	100.0	100.0	100.0	102.0	101.7	101.7
Grade 7	100.0	100.0	100.0	102.4	102.5	102.5	100.0	100.0	100.0	102.0	102.2	102.3
A.T.	100.0	100.0	100.0	101.8	101.9	102.1	100.0	100.0	100.0	101.2	101.3	101.5
SEO	100.0	100.0	100.0	102.2	102.3	102.4	100.0	100.0	100.0	101.8	101.9	102.0
HEO	100.0	100.0	100.0	102.0	102.2	102.2	100.0	100.0	100.0	101.5	101.7	101.8
EO	101.4	100.0	100.0	102.6	101.9	102.1	101.4	100.0	100.0	101.7	101.4	101.5
CO	106.3	103.1	101.9	105.6	104.4	103.4	106.3	103.1	101.9	106.4	103.5	102.6
Sen Sec.	100.0	100.0	100.0	101.9	102.0	102.0	100.0	100.0	100.0	101.3	101.5	101.5
Sec.	100.4	100.0	100.0	102.0	101.8	101.8	100.4	100.0	100.0	101.3	101.1	101.2
Typist	102.0	101.3	100.6	102.9	102.5	102.1	102.5	101.3	100.6	102.5	101.6	101.4
CA	104.0	104.9	103.8	103.6	102.8	104.7	104.0	104.9	103.8	104.1	101.9	103.7
SPTO	100.5	100.4	101.4	102.8	102.8	103.7	100.5	100.4	101.4	102.3	102.4	103.3
PTO	102.5	101.8	101.8	104.1	103.7	103.8	102.5	101.8	101.8	103.3	103.1	103.2
Tech.Gr.1	99.6	99.6	99.6	101.3	101.4	101.6	99.6	99.6	99.6	100.6	100.8	101.0
Msgr.	101.9		101.2	102.8		102.5	101.9		101.2	101.9		101.6
P.Kpr	101.1		100.8	102.4		102.3	101.1		100.8	101.6		101.5
Driver	100.9			102.3			100.9			101.5		
Craftsman	101.3			102.7			101.3			102.0		

United Kingdom

3. Change in civil servants' pay
Average per grade
a. Index at current prices

grade	single		married, two children		both	
	gross	net	gross	net	gross	net
Grade 2	108.0	107.7	108.0	107.8	108.0	107.7
Grade 3	108.5	108.8	108.5	108.7	108.5	108.8
Grade 5	104.2	106.1	104.2	106.1	104.2	106.1
Grade 7	104.2	106.9	104.2	106.6	104.2	106.8
A.T.	104.2	106.2	104.2	105.6	104.2	105.9
SEO	104.3	106.8	104.3	106.4	104.3	106.6
HEO	104.2	106.6	104.2	106.2	104.2	106.4
EO	104.3	106.4	104.3	105.9	104.3	106.2
CO	106.5	108.0	106.5	107.2	106.5	107.6
Sen Sec.	104.3	106.4	104.3	105.9	104.3	106.2
Sec.	104.3	106.2	104.3	105.5	104.3	105.8
Typist	105.4	106.8	105.5	106.0	105.5	106.4
CA	108.7	108.2	108.7	107.5	108.7	107.9
SPT0	105.4	107.9	105.4	107.5	105.4	107.7
PT0	106.1	108.2	106.1	107.6	106.1	107.9
Tech.Gr.1	103.9	105.9	103.9	105.3	103.9	105.6
Msgr.	105.7	107.0	105.7	106.1	105.7	106.5
P.Kpr	105.2	106.7	105.2	105.8	105.2	106.3
Driver	105.3	106.7	105.3	105.9	105.3	106.3
Craftsman	105.6	107.1	105.6	106.4	105.6	106.8

b. Index at constant prices

grade	single		married, two children		both	
	gross	net	gross	net	gross	net
Grade 2	103.6	103.3	103.6	103.3	103.6	103.3
Grade 3	104.0	104.3	104.0	104.3	104.0	104.3
Grade 5	100.0	101.8	100.0	101.7	100.0	101.7
Grade 7	100.0	102.5	100.0	102.3	100.0	102.4
A.T.	100.0	101.9	100.0	101.3	100.0	101.6
SEO	100.0	102.4	100.0	102.0	100.0	102.2
HEO	100.0	102.2	100.0	101.8	100.0	102.0
EO	100.0	102.0	100.0	101.5	100.0	101.8
CO	102.1	103.5	102.1	102.7	102.1	103.1
Sen Sec.	100.0	102.0	100.0	101.5	100.0	101.8
Sec.	100.0	101.8	100.0	101.2	100.0	101.5
Typist	101.1	102.4	101.2	101.7	101.1	102.0
CA	104.2	103.7	104.2	103.1	104.2	103.4
SPT0	101.1	103.5	101.1	103.0	101.1	103.3
PT0	101.8	103.8	101.8	103.2	101.8	103.5
Tech.Gr.1	99.6	101.6	99.6	101.0	99.6	101.3
Msgr.	101.3	102.5	101.3	101.7	101.3	102.1
P.Kpr	100.8	102.3	100.8	101.5	100.8	101.9
Driver	100.9	102.3	100.9	101.5	100.9	101.9
Craftsman	101.3	102.7	101.3	102.0	101.3	102.4

United Kingdom

4. Change in civil servants' pay
Average per category
a. Index at current prices

category	single		married, two children		both	
	gross	net	gross	net	gross	net
A	104.7	106.9	104.7	106.7	104.7	106.8
B	105.0	107.0	105.0	106.4	105.0	106.7
C	105.3	107.5	105.3	107.0	105.3	107.2
D	105.5	106.9	105.5	106.0	105.5	106.4
Total	105.1	107.2	105.1	106.7	105.1	107.0
(pond.nat.)						
Total	104.9	107.1	104.9	106.7	104.9	106.9
(pond.com.)						

b. Index at constant prices

category	single		married, two children		both	
	gross	net	gross	net	gross	net
A	100.3	102.5	100.3	102.3	100.3	102.4
B	100.7	102.6	100.7	102.1	100.7	102.3
C	100.9	103.1	101.0	102.6	100.9	102.8
D	101.2	102.5	101.2	101.6	101.2	102.0
Total	100.8	102.8	100.8	102.3	100.8	102.6
(pond.nat.)						
Total	100.6	102.7	100.6	102.3	100.6	102.5
(pond.com.)						

1. National civil servants' pay
Minimum/mean/maximum per grade
a. Year 1987

category	grade	single			married, two children		
		min	gross mean	max	min	gross mean	max
A: Secretary	A	3187.58	3187.58	3187.58	1503.55	1503.55	1503.55
Assistant Secy	d	2209.67	2382.17	2468.33	1108.63	1178.29	1213.09
Principal	i	1772.33	1924.33	2076.42	932.01	993.39	1054.81
Assistant Princ		1368.67	1522.58	1625.33	768.99	831.44	872.64
Admin. Officer		836.67	1122.08	1374.08	561.50	673.31	771.17
B: HEO		1143.92	1274.58	1374.08	681.66	731.68	771.17
EO		577.33	894.17	1143.92	430.47	586.09	681.66
C: Staff Officer		913.75	996.67	1056.92	593.58	625.31	648.37
Clerical Off.		501.17	683.42	913.67	384.07	487.76	593.55
Clerical Assis.		490.92	611.92	727.00	377.83	451.55	508.73
D: Head messenger		744.58	788.25	838.50	517.19	538.20	562.38
Paperkeeper		652.33	741.92	748.42	472.80	515.91	519.04
Messenger		643.75	680.58	687.08	468.67	486.39	489.52
A: Secretary		3229.35	3229.35	3229.35	1748.52	1748.52	1748.52
Assistant Secy		2251.44	2423.94	2510.10	1353.59	1423.26	1458.05
Principal		1814.10	1966.10	2118.19	1176.97	1238.36	1299.78
Assistant Princ		1410.44	1564.35	1667.10	985.77	1063.09	1114.70
Admin. Officer		878.44	1163.85	1415.85	684.12	858.00	988.49
B: HEO		1185.69	1316.35	1415.85	871.30	938.97	988.49
EO		619.10	935.94	1185.69	526.12	719.15	871.30
C: Staff Officer		955.52	1038.44	1098.69	731.08	781.59	818.30
Clerical Off.		542.94	725.19	955.44	482.58	590.76	731.03
Clerical Assis.		521.02	642.02	757.10	474.20	540.09	610.20
D: Head messenger		774.68	818.35	868.60	620.91	647.51	678.12
Paperkeeper		682.43	772.02	778.52	564.71	619.29	623.25
Messenger		673.85	710.68	717.18	559.48	581.92	585.88

b. Year of comparison 1986

category	grade	gross			single	gross		
		min	mean	max		min	mean	max
A:	Secretary	3063.83	3063.83	3063.83	1458.55	1458.55	1458.55	
	Assistant Secr.:	2123.83	2289.58	2372.50	1078.94	1145.87	1179.36	
	Principal	1612.16	1750.41	1888.75	872.30	928.13	984.00	
	Assistant Princ:	1252.83	1393.83	1487.83	727.18	784.13	822.09	
	Admin. Officer :	804.16	1078.50	1320.75	547.84	659.29	754.61	
B:	HEO	1099.50	1225.08	1320.75	667.37	716.14	754.61	
	EO	554.91	859.50	1099.50	418.18	574.60	667.37	
C:	Staff Officer	878.25	957.91	1015.83	582.16	612.84	635.15	
	Clerical Off. :	481.66	656.91	878.16	373.38	476.62	582.13	
	Clerical Assis.:	471.91	588.08	698.75	367.41	438.47	496.86	
D:	Head messenger	715.67	757.75	806.33	505.04	525.39	548.89	
	Paperkeeper	627.00	713.25	720.00	462.16	503.87	507.13	
	Messenger	618.75	654.16	660.75	457.23	475.29	478.48	

married, two children

A:	Secretary	3105.60	3105.60	3105.60	1703.52	1703.52	1703.52
	Assistant Secr.:	2165.60	2331.35	2414.27	1323.90	1390.84	1424.33
	Principal	1653.93	1792.18	1930.52	1113.06	1173.10	1228.96
	Assistant Princ:	1294.60	1435.60	1529.60	932.55	1003.38	1050.61
	Admin. Officer :	845.93	1120.27	1362.52	666.33	834.13	966.67
B:	HEO	1141.27	1266.85	1362.52	846.98	918.67	966.67
	EO	596.68	901.27	1141.27	513.86	700.17	846.98
C:	Staff Officer	920.02	999.68	1057.60	711.64	760.37	795.80
	Clerical Off. :	523.43	698.68	919.93	476.34	576.25	711.59
	Clerical Assis.:	502.01	618.18	728.85	468.02	526.91	594.60
D:	Head messenger	745.77	787.85	836.43	604.95	630.69	660.41
	Paperkeeper	657.10	743.26	750.10	550.71	603.47	607.60
	Messenger	648.85	684.26	690.85	545.66	567.33	571.35

tab1bc

2. Change in civil servants' pay
 Minimum/mean/maximum per grade
 a. Index at current prices

category	grade	gross			single	gross		
		min	mean	max		min	mean	max
A:	Secretary	104.0	104.0	104.0		103.1	103.1	103.1
	Assistant Secr.	104.0	104.0	104.0		102.8	102.8	102.9
	Principal	109.9	109.9	109.9		106.8	107.0	107.2
	Assistant Princ.	109.2	109.2	109.2		105.7	106.0	106.1
	Admin. Officer	104.0	104.0	104.0		102.5	102.1	102.2
B:	HEO	104.0	104.0	104.0		102.1	102.2	102.2
	EO	104.0	104.0	104.0		102.9	102.0	102.1
C:	Staff Officer	104.0	104.0	104.0		102.0	102.0	102.1
	Clerical Off.	104.1	104.0	104.0		102.9	102.3	102.0
	Clerical Assis.	104.0	104.1	104.0		102.8	103.0	102.4
D:	Head messenger	104.0	104.0	104.0		102.4	102.4	102.5
	Paperkeeper	104.0	104.0	103.9		102.3	102.4	102.3
	Messenger	104.0	104.0	104.0		102.5	102.3	102.3

b. Index at constant prices
 (Consumer Price Index: 102.8)

category	grade	gross			single	gross		
		min	mean	max		min	mean	max
A:	Secretary	101.2	101.2	101.2		100.2	100.2	100.2
	Assistant Secr.	101.2	101.2	101.2		99.9	100.0	100.0
	Principal	106.9	106.9	106.9		103.9	104.1	104.2
	Assistant Princ.	106.2	106.2	106.2		102.8	103.1	103.2
	Admin. Officer	101.2	101.2	101.2		99.7	99.3	99.4
B:	HEO	101.2	101.2	101.2		99.3	99.4	99.4
	EO	101.2	101.2	101.2		100.1	99.2	99.3
C:	Staff Officer	101.2	101.2	101.2		99.1	99.2	99.3
	Clerical Off.	101.2	101.2	101.2		100.0	99.5	99.1
	Clerical Assis.	101.2	101.2	101.2		100.0	100.1	99.6
D:	Head messenger	101.2	101.2	101.1		99.6	99.6	99.6
	Paperkeeper	101.2	101.2	101.1		99.5	99.6	99.5
	Messenger	101.2	101.2	101.1		99.7	99.5	99.5

Ireland

=====

2bis Change in of civil servants' pay

Minimum/mean/maximum per grade

a. Index at current prices

category	grade	gross			married, two children		
		min	mean	max	min	mean	max
A:	Secretary	104.0	104.0	104.0	102.6	102.6	102.6
	Assistant Secr.:	104.0	104.0	104.0	102.2	102.3	102.4
	Principal	109.7	109.7	109.7	105.7	105.6	105.8
	Assistant Princ:	108.9	109.0	109.0	105.7	106.0	106.1
	Admin. Officer :	103.8	103.9	103.9	102.7	102.9	102.3
B:	HEO	103.9	103.9	103.9	102.9	102.2	102.3
	EO	103.8	103.8	103.9	102.4	102.7	102.9
C:	Staff Officer :	103.9	103.9	103.9	102.7	102.8	102.8
	Clerical Off. :	103.7	103.8	103.9	101.3	102.5	102.7
	Clerical Assis.:	103.8	103.9	103.9	101.3	102.5	102.6
D:	Head messenger :	103.9	103.9	103.8	102.6	102.7	102.7
	Paperkeeper :	103.9	103.9	103.8	102.5	102.6	102.6
	Messenger :	103.9	103.9	103.8	102.5	102.6	102.5

b. Index at constant prices

(Consumer Price Index:

102.8)

category	grade	gross			married, two children		
		min	mean	max	min	mean	max
A:	Secretary	101.1	101.1	101.1	99.8	99.8	99.8
	Assistant Secr.:	101.1	101.1	101.1	99.4	99.5	99.5
	Principal	106.7	106.7	106.7	102.8	102.7	102.8
	Assistant Princ:	105.9	106.0	106.0	102.8	103.0	103.2
	Admin. Officer :	101.0	101.0	101.0	99.8	100.0	99.4
B:	HEO	101.0	101.0	101.0	100.0	99.4	99.4
	EO	100.9	101.0	101.0	99.6	99.9	100.0
C:	Staff Officer :	101.0	101.0	101.0	99.9	100.0	100.0
	Clerical Off. :	100.9	100.9	101.0	98.5	99.7	99.9
	Clerical Assis.:	100.9	101.0	101.0	98.5	99.7	99.8
D:	Head messenger :	101.0	101.0	101.0	99.8	99.8	99.8
	Paperkeeper :	101.0	101.0	100.9	99.7	99.8	99.7
	Messenger :	101.0	101.0	100.9	99.7	99.7	99.7

Ireland

=====

3. Change in civil servants' pay

Average per grade

a. Index at current prices

cate- gory	grade	single		married, two children		both	
		gross	net	gross	net	gross	net
A: Secretary	:	104.0	103.1	104.0	102.6	104.0	102.8
Assistant Secr.:		104.0	102.8	104.0	102.3	104.0	102.5
Principal	:	109.9	107.0	109.7	105.7	109.8	106.3
Assistant Princ.:		109.2	106.0	109.0	105.9	109.1	106.0
Admin. Officer	:	104.0	102.3	103.9	102.6	104.0	102.4

B: HEO	:	104.0	102.2	103.9	102.4	104.0	102.3
EO	:	104.0	102.3	103.8	102.7	103.9	102.5

C: Staff Officer	:	104.0	102.0	103.9	102.8	104.0	102.4
Clerical Off.:		104.0	102.3	103.8	102.3	103.9	102.3
Clerical Assis.:		104.0	102.7	103.8	102.2	103.9	102.4

D: Head messenger	:	104.0	102.4	103.9	102.7	103.9	102.6
Paperkeeper	:	104.0	102.3	103.8	102.6	103.9	102.5
Messenger	:	104.0	102.4	103.8	102.5	103.9	102.5

b. Index at constant prices

cate- gory	grade	single		married, two children		both	
		gross	net	gross	net	gross	net
A: Secretary	:	101.2	100.2	101.1	99.8	101.1	100.0
Assistant Secr.:		101.2	100.0	101.1	99.5	101.1	99.7
Principal	:	106.9	104.1	106.7	102.8	106.8	103.4
Assistant Princ.:		106.2	103.1	106.0	103.0	106.1	103.0
Admin. Officer	:	101.2	99.4	101.0	99.7	101.1	99.6

B: HEO	:	101.2	99.4	101.0	99.6	101.1	99.5
EO	:	101.2	99.5	101.0	99.9	101.1	99.7

C: Staff Officer	:	101.2	99.2	101.0	99.9	101.1	99.6
Clerical Off.:		101.2	99.5	100.9	99.5	101.1	99.5
Clerical Assis.:		101.2	99.9	101.0	99.4	101.1	99.6

D: Head messenger	:	101.1	99.6	101.0	99.8	101.1	99.7
Paperkeeper	:	101.1	99.5	101.0	99.8	101.1	99.6
Messenger	:	101.2	99.6	101.0	99.7	101.1	99.6

Ireland

=====

4. Change in of civil servants' pay

Average per category

a. Index at current prices

category	single		married, two children		both	
	gross	net	gross	net	gross	net
A	108.4	105.6	108.2	105.2	108.3	105.4
B	104.0	102.2	103.9	102.6	104.0	102.4
C	104.0	102.5	103.8	102.3	103.9	102.4
D	104.0	102.4	103.8	102.6	103.9	102.5
Total (Pond.nat.)	104.5	102.7	104.3	102.7	104.4	102.7
Total (Pond.com.)	106.4	104.0	106.2	103.8	106.3	103.9

b. Index at constant prices

category	single		married, two children		both	
	gross	net	gross	net	gross	net
A	105.4	102.7	105.2	102.3	105.3	102.5
B	101.2	99.4	101.0	99.7	101.1	99.6
C	101.2	99.7	101.0	99.5	101.1	99.6
D	101.1	99.5	101.0	99.7	101.1	99.6
Total (Pond.nat.)	101.6	99.8	101.4	99.8	101.5	99.8
Total (Pond.com.)	103.5	101.1	103.3	100.9	103.4	101.0

1. National civil servants' pay
Average per grade
a. Year 1987

Category	grade	LR:	single		married, two children		both		
			gross	net	gross	net	gross	net	
A1	Departmentchef	40:	588,939	228,545	588,939	248,053	588,939	238,299	
	Departmentchef	39:	554,250	221,612	554,250	238,053	554,250	229,833	
	Direktor m.fl.	39:	521,272	207,398	521,272	226,906	521,272	217,152	
	Afdelingchef	38:	418,534	176,768	418,534	195,126	418,534	185,947	
	Ambassador	38:	382,399	166,828	382,399	184,128	382,399	175,478	
	Konsulent	36:	331,533	149,000	331,533	167,823	331,533	158,412	
	Konsulent	36:	349,839	154,090	349,839	173,402	349,839	163,746	
	Konsulent	36:	353,707	155,056	353,707	174,564	353,707	164,810	
	Eksp. Sekr.	31+	34:	281,890	133,867	283,470	153,963	282,680	143,915
	Andre	:		365,926	159,407	366,351	178,861	366,139	169,134
A2	Civilingeniører	:	274,274	130,120	275,975	150,655	275,125	140,388	
	Eksp. Sekr.	:	239,469	119,057	242,550	140,058	241,010	129,558	
	Redaktør	:							
	Andre	:		236,964	118,279	240,177	139,378	238,571	128,829
B1:	Inspectorer m.fl.	29:	227,971	115,761	232,163	137,777	230,067	126,769	
	Bogholdere	25:	209,651	110,539	214,420	131,717	212,036	121,128	
	Bogholdere	21:	204,362	108,294	209,157	129,490	206,760	118,892	
	Fuldmaegtig	20:	198,556	106,500	203,398	127,178	200,977	116,839	
	Kancellist	17:	184,709	100,599	189,572	120,809	187,141	110,704	
	Overassistent	15:	176,663	97,360	181,527	116,967	179,095	107,164	
	Andre	:		206,344	108,030	210,728	128,880	208,536	118,455
	Andre	:							
B2:	Kontorfuldmaegtig	:	197,324	106,095	202,175	126,755	199,750	116,425	
	Overassistent	:	177,790	97,772	182,654	117,490	180,222	107,631	
	Andre	:	192,222	103,167	197,010	123,681	194,616	113,424	
C1:	Konstruktører	20:							
	Assistenten m.fl.	09:	158,567	89,429	163,431	108,157	160,999	98,793	
	Assistenten	07:	160,798	91,245	165,583	109,127	163,191	100,186	
	Assistenten	07:							
C2:	Andre	:							
	Faglaerte Arbejder	:							
	Assistenten	:	162,325	91,100	167,189	109,995	164,757	100,548	
	Tekniske Medarb.	:	151,204	85,890	156,068	104,607	153,636	95,249	
	Kontorassistenter	:	141,757	82,221	146,621	100,017	144,189	91,119	
D1:	Andre	:							
	Betjentformand	10:	164,843	92,033	169,707	111,182	167,275	101,608	
	Betjentformand	08:	163,443	91,903	168,307	110,610	165,875	101,257	
	Betjente	05:							
	Betjente	03:	146,279	84,158	151,143	102,194	148,711	93,176	
D2:	Andre	:	168,291	93,413	173,148	112,692	170,720	103,053	
	Ikke-faglaerte Arb	:	146,660	84,494	151,524	102,431	149,092	93,463	
	Rengøringsassist.	:	142,370	82,496	147,234	100,298	144,802	91,397	
	Andre	:	104,106	64,109	108,887	81,530	106,497	72,820	

b. Year of comparison 1986

Cate- gory	grade	LR:	single		married, two children		both	
			gross	net	gross	net	gross	net
A1:	Departmentchef	40:	547,244	191,928	548,044	203,483	547,644	197,706
	Departmentchef	39:	514,879	183,412	515,679	194,967	515,279	189,190
	Direktor m.fl.	39:	484,158	175,351	484,958	186,906	484,558	181,129
	Afdelingchef	38:	382,223	148,623	383,023	160,178	382,623	154,401
	Ambassador	38:	353,622	141,135	354,422	152,690	354,022	146,913
	Konsulent	36:	307,208	128,918	308,008	140,473	307,608	134,696
	Konsulent	36:	324,419	133,456	325,219	145,011	324,819	139,234
	Konsulent	36:	328,420	134,811	329,302	146,518	328,861	140,665
	Eksp.Sekr.	31+ 34:	259,490	116,323	262,007	129,578	260,749	122,951
	Andre	:	321,513	132,684	323,187	145,114	322,350	138,899
A2:	Civilingeniorer	:	251,939	114,206	254,986	128,007	253,463	121,107
	Eksp.Sekr.	:	223,278	106,641	227,483	121,614	225,381	114,128
	Redaktor	:						
	Andre	:	222,110	106,134	226,350	121,106	224,230	113,620
B1:	Inspectorer m.fl.	29:	212,045	103,950	217,044	119,703	214,545	111,827
	Bogholdere	25:	193,720	98,937	199,272	115,245	196,496	107,091
	Bogholdere	21:	190,289	97,794	195,855	114,123	193,072	105,959
	Fuldmægtig	20:	183,357	95,572	188,969	111,939	184,163	103,756
	Kancellist	17:	172,792	91,958	178,419	108,348	175,606	100,153
	Overassistent	15:	163,647	88,654	169,271	105,033	166,459	96,844
	Andre	:	183,633	95,079	189,025	111,226	186,329	103,153
B2:	Kontorfuldmægtig	:	181,504	95,031	187,125	111,407	184,315	103,219
	Overassistent	:	165,177	89,233	170,808	105,630	167,993	97,432
	Andre	:	183,430	95,353	189,007	111,721	186,219	103,537
C1:	Konstruktører	20:						
	Assistenten m.fl.	09:	146,381	82,434	152,007	98,819	149,194	90,627
	Assistenten	07:	143,550	81,407	149,174	97,786	146,362	89,597
	Assistenten	07:						
	Andre	:						
C2:	Faglaerte Arbejder	:						
	Assistenten	:	150,169	83,783	155,791	100,161	152,980	91,972
	Tekniske Medarb.	:	132,816	76,279	138,454	92,699	135,635	84,489
	Kontorassistenter	:	129,921	76,501	135,553	92,901	132,737	84,701
	Andre	:						
D1:	Betjentformand	10:	155,427	85,690	161,051	102,069	158,239	93,880
	Betjentformand	08:	147,466	82,814	153,090	99,193	150,278	91,004
	Betjente	05:						
	Betjente	03:	133,368	77,738	138,992	94,117	136,180	85,928
	Andre	:	145,889	82,197	151,509	98,571	148,699	90,384
D2:	Ikke-faglaerte Arb	:	140,023	80,136	145,647	96,515	142,835	88,326
	Rengøringsassist.	:	132,417	77,389	138,041	93,768	135,229	85,579
	Andre	:	96,660	60,501	102,221	76,814	99,441	68,658

Danmark

=====

3. Change in civil servants' pay
Average per grade
a. Index at current prices

Cate- gory	grade	LR:	single		married, two children		both	
			gross	net	gross	net	gross	net
A1:	Departmentchef	40:	107.6	119.1	107.5	121.9	107.5	120.5
	Departmentchef	39:	107.6	120.8	107.5	122.1	107.6	121.5
	Direktor m.fl.	39:	107.7	118.3	107.5	121.4	107.6	119.9
	Afdelingchef	38:	109.5	118.9	109.3	121.8	109.4	120.4
	Ambassador	38:	108.1	118.2	107.9	120.6	108.0	119.4
	Konsulent	36:	107.9	115.6	107.6	119.5	107.8	117.6
	Konsulent	36:	107.8	115.5	107.6	119.6	107.7	117.6
	Konsulent	36:	107.7	115.0	107.4	119.1	107.6	117.2
	Eksp.Sekr.	31+ 34:	108.6	115.1	108.2	118.8	108.4	117.1
	Andre	:	113.8	120.1	113.4	123.3	113.6	121.8
A2:		:						
	Civilingeniorer	:	108.9	113.9	108.2	117.7	108.5	115.9
	Eksp.Sekr.	:	107.3	111.6	106.6	115.2	106.9	113.5
	Redaktor	:						
	Andre	:	106.7	111.4	106.1	115.1	106.4	113.4
B1:	Inspectorer m.fl.	29:	107.5	111.4	107.0	115.1	107.2	113.4
	Bogholdere	25:	108.2	111.7	107.6	114.3	107.9	113.1
	Bogholdere	21:	107.4	110.7	106.8	113.5	107.1	112.2
	Fuldmaegtig	20:	108.3	111.4	107.6	113.6	108.0	112.6
	Kancellist	17:	106.9	109.4	106.3	111.5	106.6	110.5
	Overassistent	15:	108.0	109.8	107.2	111.4	107.6	110.7
	Andre	:	112.4	113.6	111.5	115.9	111.9	114.8
B2:		:						
	Kontorfuldmaegtig	:	108.7	111.6	108.0	113.8	108.4	112.8
	Overassistent	:	107.6	109.6	106.9	111.2	107.3	110.5
	Andre	:	104.8	108.2	104.2	110.7	104.5	109.5
C1:	Konstruktorer	20:						
	Assistenten m.fl.	09:	108.3	108.5	107.5	109.4	107.9	109.0
	Assistenten	07:	112.0	112.1	111.0	111.6	111.5	111.8
	Assistenten	07:						
	Andre	:						
C2:		:						
	Faglaerte Arbejder	:						
	Assistenten	:	108.1	108.7	107.3	109.8	107.7	109.3
	Tekniske Medarb.	:	113.8	112.6	112.7	112.8	113.3	112.7
	Kontorassistenter	:	109.1	107.5	108.2	107.7	108.6	107.6
	Andre	:						
D1:	Betjentformand	10:	106.1	107.4	105.4	108.9	105.7	108.2
	Betjentformand	08:	110.8	111.0	109.9	111.5	110.4	111.3
	Betjente	05:						
	Betjente	03:	109.7	108.3	108.7	108.6	109.2	108.4
	Andre	:	115.4	113.6	114.3	114.3	114.8	114.0
D2:		:						
	Ikke-faglaerte Arb	:	104.7	105.4	104.0	106.1	104.4	105.8
	Rengoringsassist.	:	107.5	106.6	106.7	107.0	107.1	106.8
	Andre	:	107.7	106.0	106.5	106.1	107.1	106.1

b. Index at constant prices
(Consumer Price Index: 104.2)

Category	grade	LR:	single		married, two children		both	
			gross	net	gross	net	gross	net
A1:	Departmentchef	40:	103.3	114.3	103.1	117.0	103.2	115.7
	Departmentchef	39:	103.3	116.0	103.1	117.2	103.2	116.6
	Direktor m.fl.	39:	103.3	113.5	103.2	116.5	103.2	115.1
	Afdelingchef	38:	105.1	114.1	104.9	116.9	105.0	115.6
	Ambassador	38:	103.8	113.4	103.5	115.7	103.7	114.6
	Konsulent	36:	103.6	110.9	103.3	114.7	103.4	112.9
	Konsulent	36:	103.5	110.8	103.2	114.8	103.4	112.9
	Konsulent	36:	103.4	110.4	103.1	114.3	103.2	112.4
	Eksp.Sekr.	31+ 34:	104.3	110.4	103.8	114.0	104.0	112.3
	Andre	:	109.2	115.3	108.8	118.3	109.0	116.9
A2:		:						
	Civilingeniører	:	104.5	109.3	103.9	112.9	104.2	111.2
	Eksp.Sekr.	:	102.9	107.1	102.3	110.5	102.6	108.9
	Redaktør	:						
	Andre	:	102.4	106.9	101.8	110.4	102.1	108.8
B1:	Inspectorer m.fl.	29:	103.2	106.9	102.7	110.5	102.9	108.8
	Bogholdere	25:	103.9	107.2	103.3	109.7	103.6	108.5
	Bogholdere	21:	103.1	106.3	102.5	108.9	102.8	107.7
	Fuldmaegtig	20:	103.9	106.9	103.3	109.0	103.6	108.1
	Kancellist	17:	102.6	105.0	102.0	107.0	102.3	106.1
	Overassistent	15:	103.6	105.4	102.9	106.9	103.3	106.2
	Andre	:	107.8	109.0	107.0	111.2	107.4	110.2
B2:		:						
	Kontorfuldmaegtig	:	104.3	107.1	103.7	109.2	104.0	108.2
	Overassistent	:	103.3	105.2	102.6	106.7	103.0	106.0
	Andre	:	100.6	103.8	100.0	106.2	100.3	105.1
C1:	Konstruktører	20:						
	Assistenten m.fl.	09:	104.0	104.1	103.2	105.0	103.6	104.6
	Assistenten	07:	107.5	107.6	106.5	107.1	107.0	107.3
	Assistenten	07:						
	Andre	:						
C2:		:						
	Faglaerte Arbejder	:						
	Assistenten	:	103.7	104.3	103.0	105.4	103.4	104.9
	Tekniske Medarb.	:	109.3	108.1	108.2	108.3	108.7	108.2
	Kontorassistenter	:	104.7	103.1	103.8	103.3	104.2	103.2
	Andre	:						
D1:	Betjentformand	10:	101.8	103.1	101.1	104.5	101.4	103.9
	Betjentformand	08:	106.4	106.5	105.5	107.0	105.9	106.8
	Betjente	05:						
	Betjente	03:	105.3	103.9	104.4	104.2	104.8	104.1
	Andre	:	110.7	109.1	109.7	109.7	110.2	109.4
D2:		:						
	Ikke-faglaerte Arb	:	100.5	101.2	99.8	101.8	100.2	101.5
	Rengoringsassist.	:	103.2	102.3	102.4	102.6	102.8	102.5
	Andre	:	103.4	101.7	102.2	101.9	102.8	101.8

Danmark
=====

4. Change in of civil servants' pay
Average per category
a. Index at current prices

category	:	single		married, two children		both	
		gross	net	gross	net	gross	net
A	:	108.4	113.6	107.8	117.1	108.1	115.5
B	:	108.2	110.5	107.5	112.6	107.8	111.7
C	:	108.3	108.8	107.5	109.8	107.9	109.3
D	:	108.7	107.7	107.8	108.1	108.2	107.9
Total (pond.nat.)	:	108.4	111.1	107.7	113.2	108.0	112.2
Total (pond.com.)	:	108.3	111.2	107.7	113.4	108.0	112.4

b. Index at constant prices

category	:	single		married, two children		both	
		gross	net	gross	net	gross	net
A	:	104.0	109.0	103.5	112.4	103.7	110.8
B	:	103.8	106.1	103.2	108.1	103.5	107.2
C	:	104.0	104.4	103.2	105.4	103.6	104.9
D	:	104.3	103.3	103.4	103.7	103.9	103.6
Total (pond.nat.)	:	104.0	106.6	103.3	108.6	103.7	107.7
Total (pond.com.)	:	104.0	106.7	103.3	108.8	103.7	107.8

=====

1. National civil servants' pay

Average per grade

a. Year 1987

grade	single		married, two children	
	gross	net	gross	net
3 :	125,085	97,973	131,357	105,143
4 :	120,884	95,277	127,257	102,629
7 :	108,491	87,201	115,208	94,998
A: 10 :	96,601	79,113	103,600	87,341
12 :	89,004	73,815	96,180	82,292
13 :	85,322	71,185	92,582	79,800
15 :	78,107	65,996	85,604	74,904
4 :	127,671	99,573	133,900	106,694
5 :	123,453	96,918	129,757	104,156
6 :	119,279	94,238	125,681	101,659
B 9 :	106,963	86,164	113,760	94,034
12 :	95,186	78,119	102,213	86,402
16 :	80,423	67,667	87,832	76,480
17 :	77,773	65,068	84,436	74,054
18 :	73,306	62,442	81,100	71,655
9 :	117,476	93,066	123,933	100,572
12 :	105,250	84,996	112,051	92,948
14 :	97,401	79,631	104,380	87,836
C 17 :	86,139	71,727	93,385	80,320
20 :	75,388	63,946	83,075	73,049
22 :	68,325	58,678	76,519	68,167
23 :	64,826	55,984	73,271	65,348
18 :	94,841	77,828	101,874	86,130
19 :	89,173	73,857	96,352	82,345
22 :	78,471	66,184	85,959	79,088
D 23 :	73,092	62,219	80,905	71,454
25 :	66,149	56,991	74,492	66,357
26 :	62,743	54,251	71,364	63,650
27 :	57,575	49,991	66,527	59,449

b. Year of comparison 1986

grade	single		married, two children		
	gross	net	gross	net	
A	3 :	116,868	86,053	123,184	93,164
	4 :	112,762	83,647	119,246	90,993
	7 :	100,665	76,435	107,354	84,085
	10 :	89,055	69,118	95,856	77,052
	12 :	81,954	64,519	88,866	72,596
	13 :	78,435	62,149	85,113	70,167
	15 :	71,625	57,562	78,639	65,884
B	4 :	119,515	87,532	125,862	94,642
	5 :	115,306	85,140	121,601	92,294
	6 :	111,193	82,730	117,527	90,048
	9 :	99,213	75,536	105,701	83,117
	12 :	87,670	68,224	94,501	76,213
	16 :	73,494	58,822	80,539	67,167
	17 :	70,138	56,541	77,298	64,980
	18 :	66,635	54,090	74,119	62,842
C	9 :	109,434	81,703	115,789	89,037
	12 :	97,705	74,604	104,265	82,281
	14 :	90,074	69,785	96,819	77,658
	17 :	79,197	62,670	86,115	70,823
	20 :	69,084	55,809	76,008	64,121
	22 :	62,356	51,100	69,756	59,875
	23 :	58,818	48,567	66,984	57,933
D	18 :	87,341	68,023	94,176	76,023
	19 :	81,867	64,477	88,790	72,562
	22 :	71,672	57,607	78,761	65,981
	23 :	66,576	54,060	73,876	62,690
	25 :	60,047	49,455	67,833	58,533
	26 :	56,880	47,182	64,853	56,447
	27 :	52,174	43,748	60,321	52,521

Greece

=====

3. Change in of civil servants' pay
Average per grade
a. Index at current prices

grade	single		married, two children	
	gross	net	gross	net
A 3 :	107.0	113.9	106.6	112.9
4 :	107.2	113.9	106.7	112.8
7 :	107.8	114.1	107.3	113.0
10 :	108.5	114.5	108.1	113.4
12 :	108.6	114.4	108.2	113.4
13 :	108.8	114.5	108.8	113.7
15 :	109.0	114.7	108.9	113.7
B 4 :	106.8	113.8	106.4	112.7
5 :	107.1	113.8	106.7	112.9
6 :	107.3	113.9	106.9	112.9
9 :	107.8	114.1	107.6	113.1
12 :	108.6	114.5	108.2	113.4
16 :	109.4	115.0	109.1	113.9
17 :	110.9	115.1	109.2	114.0
18 :	110.0	115.4	109.4	114.0
C 9 :	107.3	113.9	107.0	113.0
12 :	107.7	113.9	107.5	113.0
14 :	108.1	114.1	107.8	113.1
17 :	108.8	114.5	108.4	113.4
20 :	109.1	114.6	109.3	113.9
22 :	109.6	114.8	109.7	113.8
23 :	110.2	115.3	109.4	112.8
D 18 :	108.6	114.4	108.2	113.3
19 :	108.9	114.5	108.5	113.5
22 :	109.5	114.9	109.1	113.9
23 :	109.8	115.1	109.5	114.0
25 :	110.2	115.2	109.8	113.4
26 :	110.3	115.0	110.0	112.8
27 :	110.4	114.3	110.3	113.2

b. Index at constant prices
(Consumer Price Index: 0)

grade	single		married, two children		
	gross	net	gross	net	
A	3 :	91.1	96.9	90.8	96.1
	4 :	91.2	96.9	90.8	96.0
	7 :	91.7	97.1	91.3	96.2
	10 :	92.3	97.4	92.0	96.5
	12 :	92.4	97.4	92.1	96.5
	13 :	92.6	97.5	92.6	96.8
	15 :	92.8	97.6	92.7	96.8
B	4 :	90.9	96.8	90.6	96.0
	5 :	91.1	96.9	90.8	96.1
	6 :	91.3	97.0	91.0	96.1
	9 :	91.8	97.1	91.6	96.3
	12 :	92.4	97.5	92.1	96.5
	16 :	93.1	97.9	92.8	96.9
	17 :	94.4	98.0	93.0	97.0
	18 :	93.6	98.3	93.1	97.1
C	9 :	91.4	97.0	91.1	96.1
	12 :	91.7	97.0	91.5	96.1
	14 :	92.0	97.1	91.8	96.3
	17 :	92.6	97.4	92.3	96.5
	20 :	92.9	97.5	93.0	97.0
	22 :	93.3	97.7	93.4	96.9
	23 :	93.8	98.1	93.1	96.0
D	18 :	92.4	97.4	92.1	96.4
	19 :	92.7	97.5	92.4	96.6
	22 :	93.2	97.8	92.9	102.0
	23 :	93.4	98.0	93.2	97.0
	25 :	93.8	98.1	93.5	96.5
	26 :	93.9	97.9	93.7	96.0
	27 :	93.9	97.3	93.9	96.3

Greece

=====

4. Change in of civil servants' pay

Average per category

a. Index at current prices

cate- gory	single		married, two children		both	
	gross	net	gross	net	gross	net
A	108.0	114.2	107.7	113.2	107.8	113.7
B	108.0	114.2	107.6	113.2	107.8	113.7
C	108.5	114.3	108.2	113.3	108.3	113.8
D	109.9	114.9	109.6	113.7	109.7	114.2
Total- Pond.nat	108.4	114.3	108.1	113.3	108.3	113.8
Total- Pond.com	108.3	114.3	107.9	113.2	108.1	113.7

b. Index at constant prices

cate- gory	single		married, two children		both	
	gross	net	gross	net	gross	net
A	92.0	97.2	91.6	96.3	91.8	96.8
B	91.9	97.2	91.5	96.3	91.7	96.8
C	92.3	97.3	92.1	96.4	92.2	96.8
D	93.5	97.8	93.3	96.8	93.4	97.2
Total- Pond.nat	92.3	97.3	92.0	96.4	92.2	96.9
Total- Pond.com	92.1	97.3	91.9	96.4	92.0	96.8

ESPAÑA

1. National civil servants' pay
Minimum/mean/maximum per grade
a. Year 1987

grade	single						married, two children					
	gross			net			gross			net		
	min	mean	max	min	mittel	mean	min	mean	max	min	mean	max
A 30	3,439,496	5,125,676	6,848,704	2,596,032	3,680,102	4,809,897	3,451,196	5,137,376	6,860,404	2,651,487	3,730,686	4,830,021
29	3,114,188	4,987,342	6,224,956	2,339,039	3,602,224	4,360,798	3,125,888	4,999,042	6,236,656	2,391,240	3,654,847	4,380,922
28	2,648,576	4,595,691	6,039,460	1,997,691	3,358,684	4,227,241	2,660,276	4,607,391	6,051,160	2,045,354	3,412,513	4,247,365
27	2,706,752	4,559,409	5,739,640	2,044,232	3,324,334	4,068,767	2,718,452	4,571,109	5,751,340	2,092,476	3,372,535	4,089,008
26	2,314,784	4,116,967	5,482,900	1,753,805	3,052,299	3,936,176	2,326,484	4,128,667	5,494,600	1,821,512	3,090,158	4,011,480
25	2,368,796	3,903,910	4,733,836	1,797,555	2,905,128	3,429,207	2,380,496	3,915,610	4,745,536	1,866,342	2,943,362	3,497,137
24	2,180,360	3,305,562	4,548,328	1,666,725	2,484,509	3,290,076	2,192,060	3,317,262	4,560,028	1,731,860	2,524,695	3,356,151
23	2,137,748	3,245,666	4,275,220	1,631,783	2,441,230	3,170,749	2,149,448	3,257,366	4,286,920	1,696,066	2,483,710	3,234,328
22	2,095,124	3,279,265	4,331,552	1,596,832	2,467,302	2,945,441	2,106,824	3,290,965	4,343,252	1,660,262	2,509,648	2,966,267
21	2,052,596	3,163,517	4,241,628	1,561,959	2,392,034	2,797,300	2,064,296	3,175,217	4,253,328	1,624,539	2,435,370	2,818,126
20	2,013,344	3,100,643	4,183,640	1,529,772	2,340,043	2,869,849	2,025,044	3,112,343	4,146,340	1,591,567	2,382,271	2,890,675
19	0	0	0	0	0	0	0	0	0	0	0	0
17	1,934,792	2,896,474	3,529,888	1,504,055	2,192,367	2,632,143	1,946,492	2,908,174	3,541,588	1,564,513	2,233,032	2,652,969
15	1,882,424	2,920,363	3,356,320	1,460,066	2,204,232	2,530,323	1,894,124	2,932,063	3,368,020	1,519,477	2,245,135	2,584,946
11	1,777,712	2,737,451	3,337,360	1,372,108	2,066,932	2,515,344	1,789,412	2,749,151	3,349,060	1,429,424	2,106,007	2,569,778
B 24	1,856,794	2,831,289	3,610,497	1,483,141	2,160,754	2,717,334	1,868,494	2,842,989	3,622,197	1,542,039	2,200,911	2,738,160
23	1,910,738	2,546,076	3,529,557	1,506,166	1,954,040	2,654,200	1,922,438	2,557,776	3,541,257	1,566,143	2,008,653	2,675,026
22	1,543,846	2,551,434	3,486,933	1,235,703	1,960,963	2,655,823	1,555,546	2,563,134	3,498,633	1,304,014	2,016,747	2,711,752
21	1,501,318	2,816,330	3,407,937	1,199,554	2,143,437	2,593,416	1,513,018	2,828,030	3,419,637	1,266,590	2,191,842	2,648,556
20	1,462,066	2,397,391	3,351,117	1,195,431	1,844,525	2,548,528	1,473,766	2,409,091	3,362,817	1,261,523	1,902,092	2,603,100
19	1,760,138	2,714,927	3,258,873	1,379,662	2,079,979	2,475,656	1,771,838	2,726,627	3,270,573	1,436,627	2,125,603	2,529,304
18	1,409,698	2,348,395	3,187,305	1,149,871	1,812,408	2,419,117	1,421,398	2,360,095	3,199,005	1,214,392	1,869,963	2,472,050
17	1,383,514	2,087,087	3,191,013	1,127,091	1,629,064	2,422,046	1,395,214	2,098,787	3,102,715	1,190,827	1,681,996	2,475,016
16	1,357,342	2,239,194	2,942,613	1,104,322	1,735,784	2,255,236	1,369,042	2,250,894	2,954,313	1,167,272	1,792,956	2,305,840
15	1,331,146	2,469,117	3,053,265	1,081,531	1,899,206	2,313,225	1,342,846	2,480,817	3,064,965	1,143,695	1,953,397	2,364,818
14	1,304,974	1,541,764	3,001,365	1,058,761	1,248,807	2,272,224	1,316,674	1,553,464	3,013,065	1,120,141	1,304,628	2,323,298
13	1,278,790	2,445,644	3,014,277	1,061,557	1,881,900	2,282,425	1,290,490	2,457,344	3,025,977	1,135,290	1,934,564	2,333,628
12	1,252,594	1,711,026	2,868,345	1,038,243	1,367,534	2,195,822	1,264,294	1,722,726	2,880,045	1,110,927	1,423,806	2,245,682
11	1,226,434	2,305,880	2,935,521	1,014,960	1,778,136	2,249,563	1,238,134	2,317,580	2,947,221	1,086,599	1,836,799	2,300,095
10	1,200,250	2,391,909	2,935,737	991,657	1,847,479	2,249,736	1,211,950	2,403,609	2,947,437	1,062,248	1,906,269	2,300,270
9	1,238,482	2,339,080	2,896,257	1,025,683	1,807,072	2,218,152	1,250,182	2,350,780	2,907,957	1,097,803	1,866,406	2,268,291
8	1,174,066	1,382,213	1,953,576	968,353	1,121,429	1,564,438	1,185,766	1,393,913	1,965,276	1,037,896	1,174,595	1,625,271
C 15	1,158,050	1,410,717	1,592,856	971,878	1,168,957	1,295,142	1,169,750	1,422,417	1,604,556	1,040,782	1,223,187	1,364,923
14	1,131,878	1,278,848	1,801,488	948,585	1,071,764	1,454,464	1,143,578	1,290,548	1,813,188	1,016,442	1,130,841	1,512,256
13	1,105,694	1,284,850	1,647,600	925,282	1,084,710	1,341,674	1,117,394	1,296,550	1,659,300	992,090	1,147,794	1,413,098
12	1,079,498	1,211,405	1,627,704	912,762	1,019,151	1,324,762	1,091,198	1,223,105	1,639,404	978,640	1,079,200	1,395,590
10	1,027,154	1,149,830	1,556,460	865,653	964,563	1,264,205	1,038,854	1,161,530	1,568,160	929,437	1,022,256	1,332,895
8	1,000,970	1,119,032	1,379,076	842,087	937,152	1,141,010	1,012,670	1,130,732	1,390,776	904,824	993,613	1,204,612
7	987,878	1,112,403	1,365,984	850,062	931,252	1,129,620	999,578	1,124,103	1,377,684	912,509	987,448	1,192,830
6	974,786	1,094,147	1,616,100	838,017	925,214	1,314,899	986,486	1,105,847	1,627,800	899,941	980,677	1,385,378
D 8	933,350	1,066,366	1,368,357	807,988	909,036	1,139,777	945,050	1,078,066	1,380,057	868,254	963,390	1,203,057
7	920,258	1,038,416	1,330,065	795,943	883,566	1,106,463	931,958	1,050,116	1,341,765	855,686	936,802	1,168,595
5	894,074	1,012,424	1,190,481	780,795	860,488	1,008,834	905,774	1,024,124	1,202,181	830,549	912,685	1,079,034

b. Year of comparison 1986

grade	single						married, two children					
	gross			net			gross			net		
	min	mean	max	min	mittel	mean	min	mean	max	min	mean	max
A 30	3,269,314	4,878,812	6,521,770	2,467,356	3,538,233	4,580,272	3,281,014	4,890,512	6,533,470	2,509,409	3,579,262	4,588,696
29	2,965,893	4,736,317	5,900,674	2,292,518	3,449,711	4,192,090	2,977,593	4,748,017	5,912,374	2,312,934	3,499,602	4,200,631
28	2,519,734	4,314,224	5,729,314	1,984,729	3,176,613	4,066,997	2,531,434	4,325,924	5,741,014	2,002,174	3,225,970	4,075,538
27	2,572,402	4,407,444	5,213,818	1,984,729	3,222,843	3,742,823	2,584,102	4,419,144	5,225,518	2,045,889	3,268,736	3,803,736
26	2,204,542	3,811,100	5,214,730	1,708,808	2,845,220	3,743,498	2,216,242	3,822,800	5,226,430	1,762,727	2,861,114	3,804,420
25	2,251,114	3,591,752	4,260,046	1,730,511	2,695,492	3,164,833	2,262,814	3,603,452	4,271,746	1,785,362	2,714,012	3,216,560
24	2,076,526	3,117,412	4,217,326	1,587,349	2,344,573	3,131,939	2,088,226	3,129,112	4,229,026	1,638,708	2,382,308	3,183,238
23	2,035,942	3,054,091	4,056,670	1,554,070	2,297,278	3,008,234	2,047,642	3,065,791	4,068,370	1,604,617	2,337,127	3,057,927
22	1,995,346	3,054,118	3,742,714	1,560,689	2,309,219	2,803,915	2,007,046	3,065,818	3,754,414	1,570,517	2,349,168	2,813,041
21	1,954,846	2,979,228	3,275,566	1,543,155	2,267,282	2,472,295	1,966,546	2,990,928	3,287,266	1,592,314	2,305,850	2,514,411
20	1,917,454	3,143,181	3,644,458	1,495,259	2,370,227	2,727,275	1,929,154	3,154,881	3,656,158	1,543,670	2,411,029	2,736,401
19	0	0	0	0	0	0	0	0	0	0	0	0
17	1,842,646	2,740,103	3,359,542	1,432,421	2,076,289	2,538,636	1,854,346	2,751,803	3,371,242	1,479,336	2,113,166	2,581,592
15	1,792,774	2,855,952	3,129,574	1,407,014	2,169,360	2,356,961	1,804,474	2,867,652	3,141,274	1,452,932	2,207,396	2,397,617
11	1,693,042	2,586,955	3,176,698	1,323,684	1,954,162	2,394,189	1,704,742	2,598,655	3,188,398	1,350,676	1,989,509	2,435,316
B: 24	1,765,902	2,685,445	3,091,985	1,410,446	2,065,315	2,348,532	1,777,602	2,697,145	3,103,685	1,455,826	2,105,136	2,388,812
23	1,819,740	2,388,866	2,930,273	1,434,446	1,835,614	2,250,082	1,831,440	2,400,566	2,941,973	1,480,902	1,887,823	2,288,862
22	1,470,318	2,452,556	3,184,469	1,206,265	1,893,656	2,421,595	1,482,018	2,464,256	3,196,169	1,260,904	1,945,349	2,462,799
21	1,429,818	2,193,703	2,715,173	1,171,030	1,703,787	2,078,002	1,441,518	2,205,403	2,726,873	1,224,454	1,761,448	2,114,631
20	1,392,426	2,200,729	3,184,841	1,138,499	1,711,546	2,421,888	1,404,126	2,212,429	3,196,541	1,190,801	1,762,539	2,463,097
19	1,421,082	2,255,081	2,858,657	1,163,429	1,755,380	2,192,790	1,432,782	2,266,781	2,870,357	1,216,592	1,795,502	2,230,853
18	1,342,554	2,107,371	2,762,981	1,095,110	1,642,344	2,116,249	1,354,254	2,119,071	2,774,681	1,145,917	1,698,696	2,153,356
17	1,317,618	1,919,291	3,028,553	1,073,416	1,516,061	2,298,421	1,329,318	1,930,991	3,040,253	1,123,474	1,563,754	2,338,066
16	1,292,649	2,112,053	2,713,121	1,088,001	1,640,672	2,076,361	1,304,394	2,123,753	2,724,821	1,111,459	1,693,656	2,112,969
15	1,267,746	2,065,103	2,403,017	1,065,798	1,602,030	1,852,308	1,279,446	2,076,803	2,414,717	1,127,389	1,653,812	1,910,079
14	1,242,822	1,403,091	2,378,093	1,033,200	1,144,710	1,832,119	1,254,522	1,414,791	2,389,793	1,093,793	1,196,912	1,889,392
13	1,217,886	2,039,060	2,353,157	1,021,423	1,577,893	1,811,921	1,229,586	2,050,760	2,364,857	1,044,599	1,628,503	1,868,695
12	1,192,938	1,408,602	2,434,337	988,803	1,141,111	1,877,677	1,204,638	1,420,302	2,446,037	1,047,401	1,192,450	1,936,075
11	1,168,014	1,589,555	2,303,285	966,620	1,276,690	1,771,525	1,179,714	1,601,255	2,314,985	1,024,222	1,310,045	1,827,302
10	1,143,078	1,498,236	2,278,349	944,427	1,212,762	1,774,110	1,154,778	1,509,936	2,290,049	1,001,032	1,263,582	1,829,505
9	1,194,942	1,976,450	2,427,773	990,586	1,556,850	1,872,360	1,206,642	1,988,150	2,439,473	1,049,265	1,606,507	1,930,627
8	1,118,142	1,296,771	1,858,168	922,234	1,074,135	1,487,949	1,129,842	1,308,471	1,869,868	977,841	1,101,822	1,535,174
C: 15	1,102,896	1,340,280	1,514,054	925,591	1,110,557	1,230,960	1,114,596	1,351,980	1,525,754	980,588	1,161,552	1,286,678
14	1,119,972	1,276,375	1,708,202	940,789	1,071,689	1,378,904	1,131,672	1,288,075	1,719,902	996,469	1,109,473	1,423,130
13	1,053,036	1,222,879	1,564,970	891,746	1,032,319	1,274,238	1,064,736	1,234,579	1,576,670	944,866	1,092,086	1,331,484
12	1,028,088	1,175,342	1,549,670	869,293	989,407	1,261,233	1,039,788	1,187,042	1,561,370	921,415	1,046,963	1,318,020
10	978,228	1,092,281	1,370,090	843,984	925,707	1,135,992	989,928	1,103,981	1,381,790	894,345	970,716	1,187,625
8	953,292	1,072,569	1,311,926	821,043	907,605	1,085,390	964,992	1,084,269	1,323,626	870,406	961,374	1,135,277
7	940,824	1,060,311	1,298,390	809,572	896,836	1,099,581	952,524	1,072,011	1,310,090	858,437	950,231	1,123,095
6	928,356	1,037,142	1,292,354	798,102	877,302	1,094,209	940,056	1,048,842	1,304,054	846,468	929,782	1,117,663
D: 8	888,892	1,019,726	1,302,861	778,398	869,295	1,085,217	900,592	1,031,426	1,314,561	816,296	921,080	1,134,833
7	876,424	988,615	1,263,585	766,802	841,408	1,076,319	888,124	1,000,315	1,275,285	822,090	891,950	1,137,743
5	851,488	964,856	1,133,601	743,612	838,453	960,633	863,188	976,556	1,145,301	797,652	888,269	1,016,858

2. Change in civil servants' pay
Minimum/mean/maximum per grade
a. Index at current prices

grade :	single						married, two children					
	min	gross mean	max	min	net mittel	mean	min	gross mean	max	min	net mean	max
A: 30 :	105.2	105.1	105.0	105.2	104.0	105.0	105.2	105.0	105.0	105.7	104.2	105.3
29 :	105.0	105.3	105.5	102.0	104.4	104.0	105.0	105.3	105.5	103.4	104.4	104.3
28 :	105.1	106.5	105.4	100.7	105.7	103.9	105.1	106.5	105.4	102.2	105.8	104.2
27 :	105.2	103.4	110.1	103.0	103.1	108.7	105.2	103.4	110.1	102.3	103.2	107.5
26 :	105.0	108.0	105.1	102.6	107.3	105.1	105.0	108.0	105.1	103.3	108.0	105.4
25 :	105.2	108.7	111.1	103.9	107.8	108.4	105.2	108.7	111.1	104.5	108.5	108.7
24 :	105.0	106.0	107.8	105.0	106.0	105.0	105.0	106.0	107.8	105.7	106.0	105.4
23 :	105.0	106.3	105.4	105.0	106.3	105.4	105.0	106.2	105.4	105.7	106.3	105.8
22 :	105.0	107.4	105.0	102.3	106.8	105.0	105.0	107.3	105.0	105.7	106.8	105.4
21 :	105.0	106.2	114.2	101.2	105.5	113.1	105.0	106.2	114.2	102.0	105.6	112.1
20 :	105.0	98.6	105.2	102.3	98.7	105.2	105.0	98.7	105.2	103.1	98.8	105.6
19 :	100.0	100.0	100.0	100.0	100.0	100.0	100.0	100.0	100.0	100.0	100.0	100.0
17 :	105.0	105.7	105.1	105.0	105.6	103.7	105.0	105.7	105.1	105.8	105.7	102.8
15 :	105.0	102.3	107.2	103.8	101.6	107.4	105.0	102.2	107.2	104.6	101.7	107.8
11 :	105.0	105.8	105.1	103.7	105.8	105.1	105.0	105.8	105.0	105.8	105.9	105.5
B: 24 :	105.1	105.4	116.8	105.2	104.6	115.7	105.1	105.4	116.7	105.9	104.5	114.6
23 :	105.0	106.6	120.5	105.0	106.5	118.0	105.0	106.5	120.4	105.8	106.4	116.9
22 :	105.0	104.0	109.5	102.4	103.6	109.7	105.0	104.0	109.5	103.4	103.7	110.1
21 :	105.0	128.4	125.5	102.4	125.8	124.8	105.0	128.2	125.4	103.4	124.4	125.2
20 :	105.0	108.9	105.2	105.0	107.8	105.2	105.0	108.9	105.2	105.9	107.9	105.7
19 :	123.9	120.4	114.0	118.6	118.5	112.9	123.7	120.3	113.9	118.1	118.4	113.4
18 :	105.0	111.4	115.4	105.0	110.4	114.3	105.0	111.4	115.3	106.0	110.1	114.8
17 :	105.0	108.7	105.4	105.0	107.5	105.4	105.0	108.7	105.3	106.0	106.1	105.9
16 :	105.0	106.0	108.5	101.5	105.8	108.6	105.0	106.0	108.4	105.0	105.9	109.1
15 :	105.0	119.6	127.1	101.5	118.5	124.9	105.0	119.5	126.9	101.4	118.1	123.8
14 :	105.0	109.9	126.2	102.5	109.1	124.0	105.0	109.8	126.1	102.4	109.0	123.0
13 :	105.0	119.9	128.1	103.9	119.3	126.0	105.0	119.8	128.0	108.7	118.8	124.9
12 :	105.0	121.5	117.8	105.0	119.8	116.9	105.0	121.3	117.7	106.1	119.4	116.0
11 :	105.0	145.1	127.4	105.0	139.3	127.0	105.0	144.7	127.3	106.1	140.2	125.9
10 :	105.0	159.6	128.9	105.0	152.3	126.8	105.0	159.2	128.7	106.1	150.9	125.7
9 :	103.6	118.3	119.3	103.5	116.1	118.5	103.6	118.2	119.2	104.6	116.2	117.5
8 :	105.0	106.6	105.1	105.0	104.4	105.1	104.9	106.5	105.1	106.1	106.6	105.9
C: 15 :	105.0	105.3	105.2	105.0	105.3	105.2	104.9	105.2	105.2	106.1	105.3	106.1
14 :	101.1	100.2	105.5	100.8	100.0	105.5	101.1	100.2	105.4	102.0	101.9	106.3
13 :	105.0	105.1	105.3	103.8	105.1	105.3	104.9	105.0	105.2	105.0	105.1	106.1
12 :	105.0	103.1	105.0	105.0	103.0	105.0	104.9	103.0	105.0	106.2	103.1	105.9
10 :	105.0	105.3	113.6	102.6	104.2	111.3	104.9	105.2	113.5	103.9	105.3	112.2
8 :	105.0	104.3	105.1	102.6	103.3	105.1	104.9	104.3	105.1	104.0	103.4	106.1
7 :	105.0	104.9	105.2	105.0	103.8	102.7	104.9	104.9	105.2	106.3	103.9	106.2
6 :	105.0	105.5	125.1	105.0	105.5	120.2	104.9	105.4	124.8	106.3	105.5	124.0
D: 8 :	105.0	104.6	105.0	103.8	104.6	105.0	104.9	104.5	105.0	106.4	104.6	106.0
7 :	105.0	105.0	105.3	103.8	105.0	102.8	104.9	105.0	105.2	104.1	105.0	102.7
5 :	105.0	104.9	105.0	105.0	102.6	105.0	104.9	104.9	105.0	104.1	102.7	106.1

b. Index at constant prices
(Consumer Price Index:

- 167 -
104.9)

grade :	single						married, two children					
	min	gross mean	max	min	net mittel	mean	min	gross mean	max	min	net mean	max
A 30 :	100.3	100.2	100.1	100.3	99.2	100.1	100.3	100.1	100.1	100.7	99.4	100.3
29 :	100.1	100.4	100.6	97.3	99.5	99.2	100.1	100.4	100.6	98.6	99.6	99.4
28 :	100.2	101.5	100.5	96.0	100.8	99.1	100.2	101.5	100.5	97.4	100.8	99.3
27 :	100.3	98.6	104.9	98.2	98.3	103.6	100.3	98.6	104.9	97.5	98.4	102.5
26 :	100.1	103.0	100.2	97.8	102.3	100.2	100.1	103.0	100.2	98.5	103.0	100.5
25 :	100.3	103.6	105.9	99.0	102.7	103.3	100.3	103.6	105.9	99.7	103.4	103.6
24 :	100.1	101.1	102.8	100.1	101.0	100.1	100.1	101.1	102.8	100.7	101.0	100.5
23 :	100.1	101.3	100.5	100.1	101.3	100.5	100.1	101.3	100.4	100.8	101.3	100.8
22 :	100.1	102.4	100.1	97.5	101.9	100.1	100.1	102.3	100.1	100.8	101.8	100.5
21 :	100.1	101.2	108.9	96.5	100.6	107.9	100.1	101.2	108.8	97.3	100.7	106.8
20 :	100.1	94.0	100.3	97.5	94.1	100.3	100.1	94.0	100.3	98.3	94.2	100.7
19 :	95.3	95.3	95.3	95.3	95.3	95.3	95.3	95.3	95.3	95.3	95.3	95.3
17 :	100.1	100.8	100.2	100.1	100.7	98.8	100.1	100.7	100.1	100.8	100.7	98.0
15 :	100.1	97.5	102.2	98.9	96.9	102.3	100.1	97.5	102.2	99.7	97.0	102.8
11 :	100.1	100.9	100.1	98.8	100.8	100.2	100.1	100.8	100.1	100.9	100.9	100.6
B 24 :	100.2	100.5	111.3	100.2	99.7	110.3	100.2	100.5	111.3	101.0	99.7	109.3
23 :	100.1	101.6	114.8	100.1	101.5	112.4	100.1	101.6	114.7	100.8	101.4	111.4
22 :	100.1	99.2	104.4	97.7	98.7	104.5	100.1	99.2	104.3	98.6	98.8	105.0
21 :	100.1	122.4	119.7	97.7	119.9	119.0	100.1	122.2	119.5	98.6	118.6	119.4
20 :	100.1	103.8	100.3	100.1	102.7	100.3	100.1	103.8	100.3	101.0	102.9	100.7
19 :	118.1	114.8	108.7	113.0	113.0	107.6	117.9	114.7	108.6	112.6	112.9	108.1
18 :	100.1	106.2	110.0	100.1	105.2	109.0	100.1	106.2	109.9	101.0	104.9	109.4
17 :	100.1	103.7	100.4	100.1	102.4	100.5	100.1	103.6	100.4	101.0	102.5	100.9
16 :	100.1	101.1	103.4	96.8	100.9	103.5	100.1	101.0	103.4	100.1	100.9	104.0
15 :	100.1	114.0	121.1	96.7	113.0	119.0	100.1	113.9	121.0	96.7	112.6	118.0
14 :	100.1	104.8	120.3	97.7	104.0	118.2	100.1	104.7	120.2	97.6	103.9	117.2
13 :	100.1	114.3	122.1	99.1	113.7	120.1	100.1	114.2	122.0	103.6	113.2	119.0
12 :	100.1	115.8	112.3	100.1	114.2	111.5	100.0	115.6	112.2	101.1	113.8	110.6
11 :	100.1	138.3	121.5	100.1	132.8	121.1	100.0	138.0	121.4	101.1	133.7	120.0
10 :	100.1	152.2	122.8	100.1	145.2	120.9	100.0	151.7	122.7	101.2	143.8	119.9
9 :	98.8	112.8	113.7	98.7	110.6	112.9	98.8	112.7	113.6	99.7	110.8	112.0
8 :	100.1	101.6	100.2	100.1	99.5	100.2	100.0	101.6	100.2	101.2	101.6	100.9
C 15 :	100.1	100.3	100.3	100.1	100.3	100.3	100.0	100.3	100.3	101.2	100.4	101.1
14 :	96.3	95.5	100.5	96.1	95.3	100.6	96.3	95.5	100.5	97.2	97.2	101.3
13 :	100.1	100.2	100.4	98.9	100.2	100.4	100.0	100.1	100.3	100.1	100.2	101.2
12 :	100.1	98.3	100.1	100.1	98.2	100.1	100.0	98.2	100.1	101.2	98.3	100.9
10 :	100.1	100.4	108.3	97.8	99.3	106.1	100.0	100.3	108.2	99.1	100.4	107.0
8 :	100.1	99.5	100.2	97.8	98.4	100.2	100.0	99.4	100.2	99.1	98.5	101.2
7 :	100.1	100.0	100.3	100.1	99.0	97.9	100.0	100.0	100.2	101.3	99.1	101.2
6 :	100.1	100.6	119.2	100.1	100.5	114.6	100.0	100.5	119.0	101.4	100.5	118.2
D 8 :	100.1	99.7	100.1	99.0	99.7	100.1	100.0	99.6	100.1	101.4	99.7	101.1
7 :	100.1	100.1	100.3	99.0	100.1	98.0	100.0	100.1	100.3	99.2	100.1	97.9
5 :	100.1	100.0	100.1	100.1	97.8	100.1	100.0	100.0	100.1	99.3	97.9	101.2

ESPAÑA

3. Change in civil servants' pay
Average per grade
a. Index at current prices

grade	single		married, two children		both	
	gross	net	gross	net	gross	net
A: 30	105.1	104.7	105.1	105.0	105.1	104.9
29	105.3	103.7	105.3	104.1	105.3	103.9
28	105.7	103.8	105.7	104.3	105.7	104.1
27	106.7	105.4	106.6	104.8	106.7	105.1
26	106.1	105.4	106.1	105.9	106.1	105.6
25	108.9	107.1	108.9	107.7	108.9	107.4
24	106.6	105.3	106.6	105.7	106.6	105.5
23	105.6	105.6	105.6	105.9	105.6	105.8
22	105.8	105.0	105.8	106.0	105.8	105.5
21	109.1	107.5	109.1	107.3	109.1	107.4
20	102.8	102.2	102.8	102.6	102.8	102.4
19	100.0	100.0	100.0	100.0	100.0	100.0
17	105.3	104.7	105.3	104.5	105.3	104.6
15	104.9	104.4	104.9	104.8	104.9	104.6
11	105.3	105.0	105.3	105.7	105.3	105.3
B: 24	110.0	109.2	110.0	108.9	110.0	109.1
23	111.9	110.8	111.8	110.5	111.8	110.6
22	106.7	106.0	106.6	106.4	106.7	106.2
21	121.9	119.9	121.8	119.7	121.8	119.8
20	106.4	106.0	106.3	106.5	106.4	106.2
19	118.3	116.1	118.3	116.2	118.3	116.2
18	111.8	110.9	111.7	111.2	111.8	111.0
17	106.3	105.9	106.3	106.4	106.3	106.2
16	106.9	106.0	106.8	107.1	106.9	106.6
15	119.5	117.1	119.4	116.4	119.4	116.8
14	116.4	114.2	116.3	113.6	116.3	113.9
13	120.1	118.5	120.0	119.0	120.1	118.7
12	115.8	114.8	115.7	114.5	115.8	114.6
11	127.8	125.6	127.6	125.5	127.7	125.6
10	132.7	129.4	132.5	128.7	132.6	129.1
9	115.6	114.3	115.5	114.1	115.6	114.2
8	105.5	104.9	105.5	106.2	105.5	105.5
C: 15	105.2	105.2	105.1	105.8	105.1	105.5
14	102.6	102.5	102.6	103.7	102.6	103.1
13	105.1	104.8	105.1	105.5	105.1	105.1
12	104.4	104.4	104.4	105.1	104.4	104.7
10	108.5	106.5	108.4	107.6	108.5	107.1
8	104.8	103.8	104.8	104.6	104.8	104.2
7	105.1	103.7	105.0	105.5	105.0	104.6
6	113.1	111.1	113.0	112.9	113.0	112.0
D: 8	104.9	104.5	104.8	105.7	104.8	105.1
7	105.1	103.8	105.1	103.8	105.1	103.8
5	105.0	104.2	104.9	104.4	105.0	104.3

b. Index at constant prices

grade	single		married, two children		both	
	gross	net	gross	net	gross	net
A: 30	100.2	99.8	100.2	100.1	100.2	100.0
29	100.4	98.9	100.4	99.3	100.4	99.1
28	100.8	99.0	100.8	99.4	100.8	99.2
27	101.7	100.5	101.7	99.9	101.7	100.2
26	101.1	100.4	101.1	100.9	101.1	100.7
25	103.9	102.1	103.8	102.6	103.8	102.4
24	101.6	100.4	101.6	100.7	101.6	100.6
23	100.7	100.7	100.6	101.0	100.7	100.8
22	100.9	100.1	100.9	101.0	100.9	100.6
21	104.0	102.4	104.0	102.2	104.0	102.3
20	98.0	97.5	98.0	97.8	98.0	97.6
19	95.3	95.3	95.3	95.3	95.3	95.3
17	100.4	99.8	100.3	99.6	100.3	99.7
15	100.0	99.5	100.0	99.9	100.0	99.7
11	100.4	100.1	100.4	100.8	100.4	100.4
B: 24	104.9	104.1	104.8	103.8	104.9	104.0
23	106.6	105.6	106.6	105.3	106.6	105.4
22	101.7	101.0	101.7	101.4	101.7	101.2
21	116.2	114.3	116.1	114.1	116.1	114.2
20	101.4	101.1	101.4	101.5	101.4	101.3
19	112.8	110.7	112.7	110.8	112.8	110.7
18	106.6	105.7	106.5	106.0	106.5	105.8
17	101.4	101.0	101.3	101.4	101.3	101.2
16	101.9	101.1	101.9	102.1	101.9	101.6
15	113.9	111.6	113.8	111.0	113.8	111.3
14	111.0	108.9	110.9	108.3	110.9	108.6
13	114.5	112.9	114.4	113.4	114.4	113.2
12	110.4	109.5	110.3	109.1	110.3	109.3
11	121.8	119.7	121.6	119.7	121.7	119.7
10	126.5	123.4	126.3	122.7	126.4	123.0
9	110.2	108.9	110.1	108.8	110.2	108.8
8	100.6	100.0	100.6	101.2	100.6	100.6
C: 15	100.3	100.3	100.2	100.9	100.2	100.6
14	97.8	97.7	97.8	98.9	97.8	98.3
13	100.2	99.9	100.2	100.6	100.2	100.2
12	99.5	99.5	99.5	100.2	99.5	99.8
10	103.4	101.5	103.4	102.6	103.4	102.1
8	99.9	98.9	99.9	99.7	99.9	99.3
7	100.1	98.9	100.1	100.6	100.1	99.7
6	107.8	105.9	107.7	107.6	107.8	106.8
D: 8	100.0	99.7	99.9	100.7	100.0	100.2
7	100.2	98.9	100.2	99.0	100.2	99.0
5	100.1	99.4	100.0	99.5	100.1	99.5

E S P A \ A

4. Change in civil servants' pay
Average per category
a. Index at current prices

cate- gory :	single		married, two children		both	
	gross	net	gross	net	gross	net
A :	106.0	105.0	105.9	105.3	105.9	105.2
B :	111.9	110.5	111.8	110.7	111.9	110.6
C :	107.9	106.6	107.8	107.8	107.8	107.2
D :	105.0	104.2	104.9	104.4	105.0	104.3
Total- Pond.n:	107.7	106.6	107.7	107.2	107.7	106.9
Total- Pond.c:	107.3	106.3	107.3	106.8	107.3	106.5

b. Index at constant prices

cate- gory :	single		married, two children		both	
	gross	net	gross	net	gross	net
A :	101.0	100.1	101.0	100.4	101.0	100.3
B :	106.7	105.3	106.6	105.5	106.6	105.4
C :	102.8	101.6	102.7	102.7	102.8	102.2
D :	100.1	99.3	100.0	99.5	100.1	99.4
Total- Pond.n:	102.7	101.7	102.7	102.1	102.7	101.9
Total- Pond.c:	102.3	101.3	102.3	101.8	102.3	101.6

1. National civil servants' pay
Minimum/mean/maximum per grade
a. Year 1987

grade	single						married, two children					
	min	gross mean	max	min	net mittel	mean	min	gross mean	max	min	net mean	max
A: DG	122,350		134,017	112,896		123,628	124,590		136,257	115,136		125,868
DS	106,950		118,617	98,729		109,461	109,190		120,857	100,969		111,701
CD	100,417		112,084	92,720		103,452	102,657		114,324	94,960		105,692
C	99,483		111,150	91,860		102,592	101,723		113,390	94,100		104,832
D	89,800		101,467	82,952		93,684	92,040		103,707	85,192		95,924
E	81,050		92,717	74,905		85,637	83,290		94,957	77,145		87,877
F	75,100		86,767	69,431		80,163	75,340		89,007	71,671		82,403
G	72,067		83,734	66,641		77,373	74,307		85,974	68,881		79,613
H	66,350		78,017	61,384		72,116	68,590		80,257	63,624		74,356
I	63,900		75,567	59,129		69,861	66,140		77,807	61,369		72,101
J	57,367		69,034	53,120		63,852	59,607		71,274	55,360		66,092
B: H	66,350		78,017	61,384		72,116	68,590		80,257	63,624		74,356
I	63,900		75,567	59,129		69,861	66,140		77,807	61,369		72,101
J	57,367		69,034	53,120		63,852	59,607		71,274	55,360		66,092
K	55,033		66,700	50,973		61,705	57,273		68,940	53,213		63,945
L	51,767		63,434	47,968		58,700	54,007		65,674	50,208		60,940
M	48,617		60,284	45,071		55,803	50,857		62,524	47,311		58,043
C: H	66,350		78,017	61,384		72,116	68,590		80,257	63,624		74,356
J	57,367		69,034	53,120		63,852	59,607		71,274	55,360		66,092
L	51,767		63,434	47,968		58,700	54,007		65,674	50,208		60,940
M	48,617		60,284	45,071		55,803	50,857		62,524	47,311		58,043
N	48,033		59,700	44,534		55,266	50,273		61,940	46,774		57,506
Q	42,083		53,750	39,061		49,793	44,323		55,990	41,301		52,033
S	38,700		50,367	35,949		46,681	40,940		52,607	38,189		48,921
D: L	51,767		63,434	47,968		58,700	54,007		65,674	50,208		60,940
N	48,033		59,700	44,534		55,266	50,273		61,940	46,774		57,506
O	45,700		57,367	42,388		53,120	47,940		59,607	44,628		55,360
Q	42,083		53,750	39,061		49,793	44,323		55,990	41,301		52,033
R	40,567		52,234	37,666		48,398	42,807		54,474	39,906		50,638
S	38,700		50,367	35,949		46,681	40,940		52,607	38,189		48,921
T	37,067		48,734	34,416		45,178	39,307		50,974	36,656		47,418
U	35,550		47,217	33,052		43,784	37,790		49,457	35,292		46,024

b. Year of comparison 1986

grade	min	single				married, two children				
		gross mean	max	min	net mittel	gross mean	min	gross max	net mean	max
A:	DG	109,647	119,797	101,165	110,500	111,647	121,797	103,165	112,500	
	DS	95,763	105,913	88,392	97,730	97,763	107,913	90,392	99,730	
	CD	89,930	100,080	83,026	92,364	91,930	102,080	85,026	94,364	
	C	89,113	99,263	82,277	91,612	91,113	101,263	84,277	93,612	
	D	80,363	90,513	74,227	83,564	82,363	92,513	76,227	85,564	
	E	72,547	82,697	67,037	76,373	74,547	84,697	69,037	78,373	
	F	67,180	77,330	62,101	71,499	69,180	79,330	64,101	73,499	
	G	64,497	74,647	59,632	68,970	66,497	76,647	61,632	70,970	
	H	59,363	69,513	54,910	64,247	61,363	71,513	56,910	66,247	
	I	57,147	67,297	52,872	62,208	59,147	69,297	54,872	64,208	
	J	51,313	61,463	47,506	56,842	53,313	63,463	49,506	58,842	
B:	H	59,363	69,513	54,910	64,247	61,363	71,513	56,910	66,247	
	I	57,147	67,297	52,872	62,208	59,147	69,297	54,872	64,208	
	J	51,313	61,463	47,506	56,842	53,313	63,463	49,506	58,842	
	K	49,213	59,363	45,574	54,910	51,213	61,363	47,574	56,910	
	L	46,297	56,447	42,891	52,228	48,297	58,447	44,891	54,228	
	M	43,497	53,647	40,314	49,653	45,497	55,647	42,314	51,653	
C:	H	59,363	69,513	54,910	64,247	61,363	71,513	56,910	66,247	
	J	51,313	61,463	47,506	56,842	53,313	63,463	49,506	58,842	
	L	46,297	56,447	42,891	52,228	48,297	58,447	44,891	54,228	
	M	43,497	53,647	40,314	49,653	45,497	55,647	42,314	51,653	
	N	42,913	53,063	39,779	49,114	44,913	55,063	41,779	51,114	
	Q	37,663	47,813	34,949	44,287	39,663	49,813	36,949	46,287	
	S	34,630	44,780	32,159	41,497	36,630	46,780	34,159	43,497	
D:	L	46,297	56,447	42,891	52,228	48,297	58,447	44,891	54,228	
	N	42,913	53,063	39,779	49,114	44,913	55,063	41,779	51,114	
	O	40,813	50,963	37,848	47,183	42,813	52,963	39,848	49,183	
	Q	37,663	47,813	34,949	44,287	39,663	49,813	36,949	46,287	
	R	36,263	46,413	33,661	42,998	38,263	48,413	35,661	44,998	
	S	34,630	44,780	32,159	41,497	36,630	46,780	34,159	43,497	
	T	33,113	43,263	30,765	40,100	35,113	45,263	32,765	42,100	
	U	31,713	41,863	29,500	38,845	33,713	43,863	31,500	40,845	

PORTUGAL

2. Change in civil servants' pay
Minimum/mean/maximum per grade
a. Index at current prices

grade	single					married, two children						
	min	gross mean	max	min	net mittel	mean	min	gross mean	max	min	net mean	max
A: DG	111.6		111.9	111.6		111.9	111.6		111.9	111.6		111.9
DS	111.7		112.0	111.7		112.0	111.7		112.0	111.7		112.0
CD	111.7		112.0	111.7		112.0	111.7		112.0	111.7		112.0
C	111.6		112.0	111.6		112.0	111.6		112.0	111.7		112.0
D	111.7		112.1	111.8		112.1	111.7		112.1	111.8		112.1
E	111.7		112.1	111.7		112.1	111.7		112.1	111.7		112.1
F	111.8		112.2	111.8		112.1	108.9		112.2	111.8		112.1
G	111.7		112.2	111.8		112.2	111.7		112.2	111.8		112.2
H	111.8		112.2	111.8		112.2	111.8		112.2	111.8		112.2
I	111.8		112.3	111.8		112.3	111.8		112.3	111.8		112.3
J	111.8		112.3	111.8		112.3	111.8		112.3	111.8		112.3
B: H	111.8		112.2	111.8		112.2	111.8		112.2	111.8		112.2
I	111.8		112.3	111.8		112.3	111.8		112.3	111.8		112.3
J	111.8		112.3	111.8		112.3	111.8		112.3	111.8		112.3
K	111.8		112.4	111.8		112.4	111.8		112.3	111.9		112.4
L	111.8		112.4	111.8		112.4	111.8		112.4	111.8		112.4
M	111.8		112.4	111.8		112.4	111.8		112.4	111.8		112.4
C: H	111.8		112.2	111.8		112.2	111.8		112.2	111.8		112.2
J	111.8		112.3	111.8		112.3	111.8		112.3	111.8		112.3
L	111.8		112.4	111.8		112.4	111.8		112.4	111.8		112.4
M	111.8		112.4	111.8		112.4	111.8		112.4	111.8		112.4
N	111.9		112.5	112.0		112.5	111.9		112.5	112.0		112.5
Q	111.7		112.4	111.8		112.4	111.7		112.4	111.8		112.4
S	111.8		112.5	111.8		112.5	111.8		112.5	111.8		112.5
D: L	111.8		112.4	111.8		112.4	111.8		112.4	111.8		112.4
N	111.9		112.5	112.0		112.5	111.9		112.5	112.0		112.5
O	112.0		112.6	112.0		112.6	112.0		112.5	112.0		112.6
Q	111.7		112.4	111.8		112.4	111.7		112.4	111.8		112.4
R	111.9		112.5	111.9		112.6	111.9		112.5	111.9		112.5
S	111.8		112.5	111.8		112.5	111.8		112.5	111.8		112.5
T	111.9		112.6	111.9		112.7	111.9		112.6	111.9		112.6
U	112.1		112.8	112.0		112.7	112.1		112.8	112.0		112.7

b. Index at constant prices
(Consumer Price Index: 109.0)

grade		single					married, two children						
		min	gross mean	max	min	net mittel	mean	min	gross mean	max	min	net mean	max
A	DG :	102.3		102.6	102.3		102.6	102.3		102.6	102.3		102.6
	DS :	102.4		102.7	102.4		102.7	102.4		102.7	102.4		102.7
	OD :	102.4		102.7	102.4		102.7	102.4		102.7	102.4		102.7
	C :	102.4		102.7	102.4		102.7	102.4		102.7	102.4		102.7
	D :	102.5		102.8	102.5		102.8	102.5		102.8	102.5		102.8
	E :	102.5		102.8	102.5		102.8	102.5		102.8	102.5		102.8
	F :	102.5		102.9	102.5		102.8	99.9		102.9	102.5		102.8
	G :	102.5		102.9	102.5		102.9	102.5		102.9	102.5		102.9
	H :	102.5		102.9	102.5		102.9	102.5		102.9	102.5		102.9
	I :	102.5		103.0	102.6		103.0	102.5		103.0	102.6		103.0
	J :	102.5		103.0	102.5		103.0	102.5		103.0	102.5		103.0
B	H :	102.5		102.9	102.5		102.9	102.5		102.9	102.5		102.9
	I :	102.5		103.0	102.6		103.0	102.5		103.0	102.6		103.0
	J :	102.5		103.0	102.5		103.0	102.5		103.0	102.5		103.0
	K :	102.5		103.0	102.6		103.1	102.6		103.0	102.6		103.0
	L :	102.5		103.1	102.6		103.1	102.5		103.0	102.6		103.1
	M :	102.5		103.0	102.5		103.1	102.5		103.0	102.5		103.0
C	H :	102.5		102.9	102.5		102.9	102.5		102.9	102.5		102.9
	J :	102.5		103.0	102.5		103.0	102.5		103.0	102.5		103.0
	L :	102.5		103.1	102.6		103.1	102.5		103.0	102.6		103.1
	M :	102.5		103.0	102.5		103.1	102.5		103.0	102.5		103.0
	N :	102.6		103.2	102.7		103.2	102.6		103.2	102.7		103.2
	Q :	102.5		103.1	102.5		103.1	102.5		103.1	102.5		103.1
	S :	102.5		103.1	102.5		103.2	102.5		103.1	102.5		103.1
D	L :	102.5		103.1	102.6		103.1	102.5		103.0	102.6		103.1
	N :	102.6		103.2	102.7		103.2	102.6		103.2	102.7		103.2
	O :	102.7		103.2	102.7		103.2	102.7		103.2	102.7		103.2
	Q :	102.5		103.1	102.5		103.1	102.5		103.1	102.5		103.1
	R :	102.6		103.2	102.6		103.2	102.6		103.2	102.6		103.2
	S :	102.5		103.1	102.5		103.2	102.5		103.1	102.5		103.1
	T :	102.7		103.3	102.6		103.3	102.7		103.3	102.6		103.3
	U :	102.8		103.4	102.7		103.4	102.8		103.4	102.7		103.3

PORTUGAL

3. Change in civil servants' pay
Average per grade
a. Index at current prices

grade	single		married, two children		both	
	gross	net	gross	net	gross	net
A: DG	111.7	111.7	111.7	111.7	111.7	111.7
DS	111.8	111.9	111.8	111.9	111.8	111.9
CD	111.8	111.8	111.8	111.9	111.8	111.9
C	111.8	111.8	111.8	111.8	111.8	111.8
D	111.9	111.9	111.9	111.9	111.9	111.9
E	111.9	111.9	111.9	111.9	111.9	111.9
F	112.0	112.0	110.7	112.0	111.3	112.0
G	112.0	112.0	112.0	112.0	112.0	112.0
H	112.0	112.0	112.0	112.0	112.0	112.0
I	112.1	112.1	112.1	112.1	112.1	112.1
J	112.1	112.1	112.1	112.1	112.1	112.1
B: H	112.0	112.0	112.0	112.0	112.0	112.0
I	112.1	112.1	112.1	112.1	112.1	112.1
J	112.1	112.1	112.1	112.1	112.1	112.1
K	112.1	112.1	112.1	112.1	112.1	112.1
L	112.1	112.1	112.1	112.1	112.1	112.1
M	112.1	112.1	112.1	112.1	112.1	112.1
C: H	112.0	112.0	112.0	112.0	112.0	112.0
J	112.1	112.1	112.1	112.1	112.1	112.1
L	112.1	112.1	112.1	112.1	112.1	112.1
M	112.1	112.1	112.1	112.1	112.1	112.1
N	112.2	112.3	112.2	112.3	112.2	112.3
Q	112.1	112.1	112.1	112.1	112.1	112.1
S	112.2	112.2	112.2	112.2	112.2	112.2
D: L	112.1	112.1	112.1	112.1	112.1	112.1
N	112.2	112.3	112.2	112.3	112.2	112.3
O	112.3	112.3	112.3	112.3	112.3	112.3
Q	112.1	112.1	112.1	112.1	112.1	112.1
R	112.2	112.3	112.2	112.3	112.2	112.3
S	112.2	112.2	112.2	112.2	112.2	112.2
T	112.3	112.3	112.3	112.3	112.3	112.3
U	112.5	112.4	112.5	112.4	112.5	112.4

b. Index at constant prices

grade	single		married, two children		both	
	gross	net	gross	net	gross	net
A:	DG : 102.5	102.5	102.5	102.5	102.5	102.5
	DS : 102.6	102.6	102.6	102.6	102.6	102.6
	CD : 102.6	102.6	102.6	102.6	102.6	102.6
	C : 102.5	102.5	102.5	102.6	102.5	102.5
	D : 102.6	102.7	102.6	102.7	102.6	102.7
	E : 102.6	102.7	102.6	102.7	102.6	102.7
	F : 102.7	102.7	101.5	102.7	102.1	102.7
	G : 102.7	102.7	102.7	102.7	102.7	102.7
	H : 102.7	102.7	102.7	102.7	102.7	102.7
	I : 102.8	102.8	102.8	102.8	102.8	102.8
	J : 102.8	102.8	102.8	102.8	102.8	102.8
B:	H : 102.7	102.7	102.7	102.7	102.7	102.7
	I : 102.8	102.8	102.8	102.8	102.8	102.8
	J : 102.8	102.8	102.8	102.8	102.8	102.8
	K : 102.8	102.8	102.8	102.8	102.8	102.8
	L : 102.8	102.8	102.8	102.8	102.8	102.8
	M : 102.8	102.8	102.8	102.8	102.8	102.8
C:	H : 102.7	102.7	102.7	102.7	102.7	102.7
	J : 102.8	102.8	102.8	102.8	102.8	102.8
	L : 102.8	102.8	102.8	102.8	102.8	102.8
	M : 102.8	102.8	102.8	102.8	102.8	102.8
	N : 102.9	103.0	102.9	102.9	102.9	102.9
	Q : 102.8	102.8	102.8	102.8	102.8	102.8
	S : 102.9	102.9	102.8	102.9	102.9	102.9
D:	L : 102.8	102.8	102.8	102.8	102.8	102.8
	N : 102.9	103.0	102.9	102.9	102.9	102.9
	O : 103.0	103.0	103.0	103.0	103.0	103.0
	Q : 102.8	102.8	102.8	102.8	102.8	102.8
	R : 102.9	103.0	102.9	102.9	102.9	102.9
	S : 102.9	102.9	102.8	102.9	102.9	102.9
	T : 103.0	103.0	103.0	103.0	103.0	103.0
	U : 103.2	103.1	103.1	103.1	103.1	103.1

PORTUGAL

4. Change in civil servants' pay
Average per category
a. Index at current prices

cate- gory	single		married, two children		both	
	gross	net	gross	net	gross	net
A	112.0	112.0	111.9	112.0	111.9	112.0
B	112.1	112.1	112.1	112.1	112.1	112.1
C	112.1	112.1	112.1	112.1	112.1	112.1
D	112.3	112.3	112.3	112.3	112.3	112.3
Total- Pond.nat	112.1	112.1	112.0	112.1	112.1	112.1
Total- Pond.com	112.1	112.1	112.0	112.1	112.0	112.1

b. Index at constant prices

cate- gory	single		married, two children		both	
	gross	net	gross	net	gross	net
A	102.7	102.7	102.6	102.7	102.6	102.7
B	102.8	102.8	102.8	102.8	102.8	102.8
C	102.8	102.8	102.8	102.8	102.8	102.8
D	103.0	103.0	103.0	102.9	103.0	103.0
Total- Pond.nat	102.8	102.8	102.7	102.8	102.8	102.8
Total- Pond.com	102.8	102.8	102.7	102.8	102.7	102.8

C H A P T E R I I

Trends in the cost-of-living

(Joint Index)

Chapter II - Trends in the cost-of-living (Joint Index)

II.1. General observations

The decision of the Council of 15 December 1981 concerning the method of adjusting the remuneration of officials of the Community (Method 1981) explicitly confirmed the procedure previously applied according to which the Statistical Office of the European Community draws up, in agreement with the national statistical departments of the Member States, the Joint Indexes for the various places of employment of the Community.

These Joint Indexes are computed taking in account national price indices for various products and groups of products and a weighting resulting from the household budget survey for officials of the European Community.

II.2 Summary of results

Table J shows a synopsis of the Joint Index of changes in costs of living of the European Community officials in Member States' capitals and in Varese.

Table J

Synopsis of the Joint Index in Member States

Situation 1st of July 1987

1st of July 1986 = 100

COUNTRY	Indices
Germany	100,9
France	103,8
Italy - Rome	104,6
- Varese	106,2
Netherlands	99,9
Belgium/Luxembourg	102,1
United Kingdom	104,8
Ireland	102,8 *
Denmark	104,2 *
Greece	117,5 *
Spain	104,9 *
Portugal	109,0 *

* national indice

SECTION INTER-ORGANISATIONS

Paris, le 2 octobre 1987

ALLEMAGNE

Bonn

INDICES DES PRIX A LA CONSOMMATION PAR GROUPES DE DEPENSES
AU 1er JUILLET 1987, BASE 100 AU 1er JUILLET 1986

(Indices établis par la Section Inter-Organisations
d'Etude des Salaires et des Prix)

Groupes de dépenses	Pondération en 0/00	Indices au 1.7.87 Base 100 au 1.7.86
Indice d'ensemble	1.000	100,9
I Alimentation, boissons, restaurants	212,8	99,4
II Logement et services	202,0	101,5
III Equipement et entretien ménagers	138,0	101,2
IV Services domestiques	8,8	103,7
V Vêtements et chaussures	109,0	101,4
VI Soins personnels	20,2	101,2
VII Soins médicaux	44,7	101,2
VIII Transports	135,6	101,2
IX Distractions et lectures	100,3	101,6
X Divers	28,6	100,1

SECTION INTER-ORGANISATIONS

Paris, le 2 octobre 1987

FRANCE

Paris

INDICES DES PRIX A LA CONSOMMATION PAR GROUPES DE DEPENSES
AU 1er JUILLET 1987, BASE 100 AU 1er JUILLET 1986

(Indices établis par l'INSEE d'après le schéma utilisé par
la Section Inter-Organisations d'Etude des Salaires et des Prix)

Groupes de dépenses	Pondération en 0/00	Indices au 1.7.87 Base 100 au 1.7.86
Indice d'ensemble	1.000	103,8
I Alimentation, boissons, restaurants	270,6	104,3
II Logement et services	237,9	102,3
III Equipement et entretien ménagers	70,4	103,4
IV Services domestiques	36,6	107,6
V Vêtements et chaussures	80,3	104,3
VI Soins personnels	37,2	106,1
VII Soins médicaux	48,7	102,3
VIII Transports	98,7	103,8
IX Distractions et lectures	67,2	104,6
X Divers	52,4	103,0

SECTION INTER-ORGANISATIONS

Paris, le 2 octobre 1987

ITALIE

Rome

INDICES DES PRIX A LA CONSOMMATION PAR GROUPES DE DEPENSES
AU 1er JUILLET 1987, BASE 100 AU 1er JUILLET 1986

(Indices établis par la Section Inter-Organisations
d'Etude des Salaires et des Prix)

Groupes de dépenses	Pondération en 0/00	Indices au 1.7.87 Base 100 au 1.7.86
Indice d'ensemble	1.000	104,6
I Alimentation, boissons, restaurants	272,5	103,3
II Logement et services	154,4	106,0
III Equipement et entretien ménagers	89,9	104,7
IV Services domestiques	47,8	104,7
V Vêtements et chaussures	83,1	106,7
VI Soins personnels	37,9	104,9
VII Soins médicaux	40,3	106,8
VIII Transports	127,6	102,6
IX Distractions et lectures	109,7	105,2
X Divers	36,8	103,7

I T A L I E

V a r e s e

INDICES DES PRIX A LA CONSOMMATION PAR GROUPES DE DEPENSES

AU 1er JUILLET 1987, BASE 100 AU 1er JUILLET 1986

(Calculs effectués par l'OSCE en collaboration avec l'ISTAT)

Groupes de dépenses	Pondération en ⁰ /oo	Indices au 1er juillet 1987 Base 100 au 1er juillet 1986
Indice d'ensemble	1 000	106,15
1. Produits alimentaires, boissons, tabacs	190,11	105,72
2. Articles d'habillement et chaussures	74,50	110,52
3. Logement, chauffage, éclairage	179,80	104,17
4. Articles d'ameublement, de ménage, d'entretien, électroménager	125,29	100,07
5. Dépenses de santé	12,25	109,33
6. Transport et communications	102,26	101,71
7. Loisirs, spectacles, enseignement et culture	78,11	114,29
8. Autres biens et services	157,69	106,20

SECTION INTER-ORGANISATIONS

Paris, le 2 octobre 1987

PAYS-BAS

La Haye

INDICES DES PRIX A LA CONSOMMATION PAR GROUPES DE DEPENSES
AU 1er JUILLET 1987, BASE 100 AU 1er JUILLET 1986

(Indices établis par la Section Inter-Organisations
d'Etude des Salaires et des Prix)

Groupes de dépenses	Pondération en 0/00	Indices au 1.7.87 Base 100 au 1.7.86
Indice d'ensemble	1.000	99,9
I Alimentation, boissons, restaurants	229,2	98,8
II Logement et services	210,1	95,5
III Equipement et entretien ménagers	99,6	101,0
IV Services domestiques	15,7	102,2
V Vêtements et chaussures	107,7	100,7
VI Soins personnels	19,2	102,0
VII Soins médicaux	38,8	103,1
VIII Transports	140,6	105,5
IX Distractions et lectures	107,7	101,2
X Divers	31,4	102,0

L'indice par pondération des groupes ne correspond pas exactement à l'indice d'ensemble : rebasage, arrondis.

SECTION INTER-ORGANISATIONS

Paris, le 2 octobre 1987

ROYAUME-UNI

Londres

INDICES DES PRIX A LA CONSOMMATION PAR GROUPES DE DEPENSES
AU 1er JUILLET 1987, BASE 100 AU 1er JUILLET 1986

(Indices établis par la Section Inter-Organisations
d'Etude des Salaires et des Prix)

Groupes de dépenses	Pondération en 0/00	Indices au 1.7.87 Base 100 au 1.7.86
Indice d'ensemble	1.000	104,8
I Alimentation, boissons, restaurants	260,4	103,4
II Logement et services	206,4	108,3
III Equipement et entretien ménagers	123,6	100,7
IV Services domestiques	10,7	105,3
V Vêtements et chaussures	82,2	102,4
VI Soins personnels	20,8	105,5
VII Soins médicaux	24,2	116,9
VIII Transports	157,1	106,5
IX Distractions et lectures	94,3	101,8
X Divers	20,3	102,1

L'indice par pondération des groupes ne correspond pas exactement à l'indice d'ensemble : rebasage, arrondis.

C H A P T E R I I I

**Trends in the total emoluments paid
by the central administrations of the Member States**

(Control Indicator)

Salaries of sector S61 (central government)

% of each country with respect to the Community

	1971	1972	1973	1974	1975	1976	1977	1978	1979	1980	1981	1982	1983	1984	1985	1986	1987
	EUR 12 = 100																
	ECU																
EUR 12	:	:	:	:	:	:	100,0	100,0	100,0	100,0	100,0	100,0	100,0	:	:	:	:
B	:	:	:	:	:	:	5,1	5,1	5,0	4,6	4,4	4,0	3,8	:	:	:	:
DK	:	:	:	:	:	:	2,2	2,1	2,0	1,7	1,7	1,7	1,7	:	:	:	:
D	:	:	:	:	:	:	30,5	30,3	29,4	27,4	25,8	26,0	26,4	:	:	:	:
GR	:	:	:	:	:	:	0,6	0,6	0,7	0,6	0,7	0,8	0,7	:	:	:	:
E	:	:	:	:	:	:	5,0	5,2	6,1	5,8	5,6	5,4	4,7	:	:	:	:
F	:	:	:	:	:	:	25,0	25,3	24,8	24,7	24,4	24,8	24,4	:	:	:	:
IRL	:	:	:	:	:	:	0,5	0,5	0,5	0,6	0,7	0,7	0,7	:	:	:	:
I	:	:	:	:	:	:	11,6	11,9	12,2	12,9	14,2	14,5	15,8	:	:	:	:
L	:	:	:	:	:	:	0,2	0,2	0,2	0,2	0,2	0,2	0,2	:	:	:	:
NL	:	:	:	:	:	:	4,6	4,6	4,4	4,0	3,6	3,7	3,6	:	:	:	:
P	:	:	:	:	:	:	1,3	1,1	1,0	1,1	1,2	1,2	1,1	:	:	:	:
UK	:	:	:	:	:	:	13,3	13,1	13,7	16,4	17,7	17,2	16,9	:	:	:	:

Salaries of sector S61 (central government)

% of each country with respect to the Community

	1971	1972	1973	1974	1975	1976	1977	1978	1979	1980	1981	1982	1983	1984	1985	1986	1987
	EUR 12 = 100																
	PPS																
EUR 12	:	:	:	:	:	:	100,0	100,0	100,0	100,0	100,0	100,0	100,0	:	:	:	:
B	:	:	:	:	:	:	3,9	3,9	4,0	4,0	4,1	4,0	3,8	:	:	:	:
DK	:	:	:	:	:	:	1,6	1,5	1,5	1,4	1,4	1,5	1,4	:	:	:	:
D	:	:	:	:	:	:	24,0	23,7	23,7	23,5	23,1	22,8	22,6	:	:	:	:
GR	:	:	:	:	:	:	0,8	0,8	0,9	0,9	0,9	0,9	0,9	:	:	:	:
E	:	:	:	:	:	:	7,0	7,2	7,4	7,4	7,2	6,9	6,8	:	:	:	:
F	:	:	:	:	:	:	22,6	23,0	22,8	22,5	22,3	23,2	23,1	:	:	:	:
IRL	:	:	:	:	:	:	0,6	0,6	0,6	0,7	0,7	0,7	0,7	:	:	:	:
I	:	:	:	:	:	:	15,1	15,7	15,9	16,2	17,4	17,3	17,5	:	:	:	:
L	:	:	:	:	:	:	0,2	0,2	0,2	0,2	0,2	0,2	0,2	:	:	:	:
NL	:	:	:	:	:	:	3,9	3,9	3,9	3,8	3,5	3,4	3,3	:	:	:	:
P	:	:	:	:	:	:	2,4	2,1	2,2	2,3	2,2	2,3	2,3	:	:	:	:
UK	:	:	:	:	:	:	18,0	17,4	16,9	17,3	16,9	16,8	17,3	:	:	:	:

Employees in General Government (1000)

Total

Table Nr. 001

	1971	1972	1973	1974	1975	1976	1977	1978	1979	1980	1981	1982	1983	1984	1985	1986	1987	
	1000																	
EUR 12	:	:	:	:	:	:	:	:	:	:	:	:	:	:	:	22288*	22543*	22702*
B	528	547	564	582	596	616	628	658	693	707	712	717	711	718	728	733*	717*	
DK	429	475	499	525	552	570	596	624	661	691	719	746	753	747	754	761	781*	
D	3105	3259	3367	3493	3576	3635	3660	3746	3844	3903	3968	3996	4026	4036	4090	4115*	4123*	
GR	:	:	:	:	:	:	:	:	:	:	:	:	:	:	:	280*	283*	284*
E	:	:	:	:	:	:	:	:	:	1240	1294	1320	1358	1401	1463*	1508*	1598*	
F	2884:	2867	2945	2997	3136	3223	4115	4234	4305	4373	4460	4576	4682	4753	4882	4974	4974*	
IRL	122	125	131	137	142	148	153	158	163	168	173	175	173	174	172	172*	169*	
I	2508	2661	2711	2780	2855	2958	3057	3101	3163	3197	3265	3302	3324	3373	3388	3432*	3511*	
L	13	14	14	15	15	16	16	16	17	17	17	17	17	17*	17*	17*	17*	
NL	589	606	612	624	637	658	676	690	703	714	728	734	733	730'	736	737*	736*	
P	:	:	:	:	:	:	331	351	372	388	406	420	436	412*	414*	418*	426*	
UK	4677	4820	4955	4991	5286	5373	5330	5346	5430	5396	5363	5308	5335	5348	5364	5393	5366*	
EUR 9	14855:	15374	15798	16144	16795	17197	18231	18573	18979	19166	19405	19571	19754	19896*	20131*	20334*	20394*	

Salaries of sector Sc0 (general government)

Total

Table Nr. 002

	1971	1972	1973	1974	1975	1976	1977	1978	1979	1980	1981	1982	1983	1984	1985	1986	1987
	AT CURRENT PRICES																
	National currency																
EUR 12	:	:	:	:	:	:	196612	225217	258293	307600	355151	395353	435905*	468239*	503575*	541966*	577260*
B	142538	168026	194025	232378	283460	323198	355493	391990	426781	471571	518142	549769	559526	589534	622814	643531*	643531*
DK	18798	21863	25496	31283	37233	42909	48136	54391	61650	69515	79950	93853	101183	104318	110350	113819	124973*
D	70760	79520	92600	107660	117020	123430	131760	140520	150540	162660	173000	178070	183590	187230	194380	204020*	212793*
GR	:	:	40079	54319	65545	81115	100581	125700	160430	195560	248200	326540	399200	494700	629375*	731171*	848158*
E	197200	226300	274700	347300	432600	567200	747100	944200	1148198	1488197	1747152	2000072	2364892	2634412	2975000*	3325000*	3690750*
F	84995	94651	107840	128458	154873	182177	252781	293715	334512	387179	448738	528155	588464	642755	693241	734967	754076*
IRL	188548	229040	282539	335868	460347	542311	613931	730268	916927	1181243	1475029	1659663	1821518*	1988298	2123812*	2319239*	2458393*
I	7883	8948	10419	12366	14134	17129	21614	26273	32506	42732	56135	65288	76218	86400	95228	104068	116452*
L	4499	5135	6117	7729	8984	10336	11574	12385	13719	15558	17310	18287	19858	21233	22295	23604*	25397*
NL	15840	18340	21000	24760	28880	32660	35970	39140	41980	44080	45020	46720	46950	46350	46880	47343*	47958*
P	:	:	:	:	:	:	70429	88268	109194	145666	178067	216357	271235	287522*	350852*	437486*	506609*
UK	6928	8064	9188	11354	15806	18041	19470	21639	24784	31165	35500	37972	41432	43840	46426	50767	54371*
EUR 9	68404	78043	90338	108567	131205	150090	178158	204138	233526	276516	319036	354704	389820*	419862	450099*	485179*	515667*

Salaries of sector S60 (general government)

Per wage and salary earner

Table Nr. 020

	1971	1972	1973	1974	1975	1976	1977	1978	1979	1980	1981	1982	1983	1984	1985	1986	1987	
	AT CURRENT PRICES																	
	National currency																	
EUR 12	:	:	:	:	:	:	:	:	:	:	:	:	:	:	:	22594*	24041*	25428*
B	269958	307177	344016	399275	475604	524672	566072	595729	615846	667003	727728	766763	786956	821078	855514	877942*	897533*	
DK	43818	46027	51094	59587	67451	75279	80765	87165	93268	100601	111196	125808	134373	139649	146353	149565	160017*	
D	22789	24400	27502	30822	32724	33956	36000	37512	39162	41676	43599	44562	45601	46390	47526	49580*	51611*	
GR	:	:	:	:	:	:	:	:	:	:	:	:	:	:	:	2247768*	2583645*	2986472*
E	:	:	:	:	:	:	:	:	:	1200159	1350195	1515206	1741452	1880380	2033493*	2204907*	2309606*	
F	29471:	33014	36618	42862	49386	56524	61429	69371	77703	88539	100614	115418	125686	135231	141999	147762	151604*	
IRL	1545	1832	2157	2452	3242	3664	4013	4622	5625	7031	8526	9484	10529*	11427	12348*	13484*	14547*	
I	3143	3363	3843	4448	4951	5791	7070	8472	10277	13366	17193	19772	22930	25615	28107	30323*	33168*	
L	333259	366786	424792	522230	587190	662564	727925	764506	821497	904535	994828	1075706	1168117	1249000*	1311470*	1388470*	1493941*	
NL	26893	30264	34314	39679	45338	49635	53210	56725	59716	61737	61841	63651	64052	63493	63696	64237*	65160*	
P	:	:	:	:	:	:	212776	251476	293532	375428	438589	515136	622099	697869*	847468*	1046618*	1189223*	
UK	1481	1673	1854	2275	2990	3358	3653	4048	4564	5776	6619	7154	7766	8197	8655	9413	10133*	
EUR 9	4605:	5076	5718	6725	7812	8728	9772	10991	12305	14427	16441	18124	19734*	21103*	22358*	23860*	25285*	

Salaries of sector S60 (general government)

Per wage and salary earner

Table Nr. 032

	1971	1972	1973	1974	1975	1976	1977	1978	1979	1980	1981	1982	1983	1984	1985	1986	1987	
	AT 1980 PRICES																	
	National currency																	
EUR 12	:	:	:	:	:	:	:	:	:	:	:	:	:	:	:	14870*	15264*	15605*
B	509132	549677	580261	597277	633534	647436	652051	659009	655521	667003	673768	661626	631622	620417	616966	625049*	629704*	
DK	108568	105453	104804	106315	109500	111242	107905	106597	103276	100601	99236	101860	101438	98971	98830	97495*	100007*	
D	35474	35940	38108	39908	39893	39738	40668	41247	41430	41676	41071	40062	39719	39418	39556	41695*	42605*	
GR	:	:	:	:	:	:	:	:	:	:	:	:	:	:	:	910192*	856842*	872630*
E	:	:	:	:	:	:	:	:	:	1200159	1180765	1157274	1184575	1155613	1154023*	1146614*	1132950*	
F	68426:	72481	75149	77724	80353	83715	83175	86715	87958	88539	89163	91955	91434	91766	91368	92610*	92493*	
IPL	5201	5624	5934	5829	6533	6151	5902	6297	6671	7031	7131	6846	6911*	6980	7240*	7633*	7979*	
I	11683	11747	11930	11414	10792	10691	11044	11724	12356	13366	14576	14461	14601	14642	14700	14955*	15687*	
L	604974	632934	698474	780194	796186	820691	851628	864421	883369	904535	915324	893201	896978	901124*	915525*	966403*	1026032*	
NL	51374	53404	55793	58905	61134	61411	62022	63259	63852	61737	58181	56888	55728	53904	52689	53151*	54403*	
P	:	:	:	:	:	:	425572*	359244*	366921*	375428*	365490*	367960*	345593*	290762*	302667*	334643*	347349*	
UK	4744	5028	5146	5393	5731	5563	5268	5344	5304	5776	5944	5911	6111	6158	6179	6480*	6712*	
EUR 9	11928:	12357	12783	13140	13364	13359	13367	13769	13935	14427	14705	14693	14739*	14725*	14733*	15173*	15551*	

Salaries of sector S60 (general government)

Per wage and salary earner

Table Nr. 034

	1971	1972	1973	1974	1975	1976	1977	1978	1979	1980	1981	1982	1983	1984	1985	1986	1987
	AT 1980 PRICES																
	1980 = 100																
EUR 12	:	:	:	:	:	:	:	:	:	:	:	:	:	:	:	:	:
B	76,3	82,4	87,0	89,5	95,0	97,1	97,8	98,8	98,3	100,0	101,0	99,2	94,7	93,0	92,5	93,7*	94,4*
DK	107,9	104,8	104,2	105,7	108,8	110,6	107,3	106,0	102,7	100,0	98,6	101,3	100,8	98,4	98,2	96,9*	99,4*
D	85,1	86,2	91,4	95,8	95,7	95,4	97,6	99,0	99,4	100,0	98,5	96,1	95,3	94,6	94,9	100,0*	102,2*
GR	:	:	:	:	:	:	:	:	:	:	:	:	:	:	:	:	:
E	:	:	:	:	:	:	:	:	:	100,0	98,4	96,4	98,7	96,3	96,2*	95,5*	94,4*
F	77,3:	81,9	84,9	87,8	90,8	94,6	93,9	97,9	99,3	100,0	100,7	103,9	103,3	103,6	103,2	104,6*	104,5*
IRL	74,0	80,0	84,4	82,9	92,9	87,5	83,9	89,6	94,9	100,0	101,4	97,4	98,3*	99,3	103,0*	108,6*	113,5*
I	87,4	87,9	89,3	85,4	80,7	80,0	82,6	87,7	92,4	100,0	109,0	108,2	109,2	109,5	110,0	111,9*	117,4*
L	66,9	70,0	77,2	86,3	88,0	90,7	94,2	95,6	97,7	100,0	101,2	98,7	99,2	99,6*	101,2*	106,8*	113,4*
NL	83,2	86,5	90,4	95,4	99,0	99,5	100,5	102,5	103,4	100,0	94,2	92,1	90,3	87,3	85,3	86,1*	88,1*
P	:	:	:	:	:	:	113,4*	95,7*	97,7*	100,0*	97,4*	98,0*	92,1*	77,4*	80,6*	89,1*	92,5*
UK	82,1	87,1	89,1	93,4	99,2	96,3	91,2	92,5	91,8	100,0	102,9	102,3	105,8	106,6	107,0	112,2*	116,2*
EUR 9	82,7:	85,7	88,6	91,1	92,6	92,6	92,7	95,4	96,6	100,0	101,9	101,8	102,2*	102,1*	102,1*	105,2*	107,8*

Salaries of sector S60 (general government)

Per wage and salary earner

Table Nr. 035

	1971	1972	1973	1974	1975	1976	1977	1978	1979	1980	1981	1982	1983	1984	1985	1986	1987	
	AT 1980 PRICES																	
	T/T-1 %																	
EUR 12	:	:	:	:	:	:	:	:	:	:	:	:	:	:	:	:	2,6*	2,2*
B	5,0	8,0	5,6	2,9	6,1	2,2	0,7	1,1	-0,5	1,8	1,0	-1,8	-4,5	-1,8	-0,6	1,3*	0,7*	
DK	-0,8	-2,9	-0,6	1,4	3,0	1,6	-3,0	-1,2	-3,1	-2,6	-1,4	2,6	-0,4	-2,4	-0,1	-1,4*	2,6*	
D	8,6	1,3	6,0	4,7	0,0	-0,4	2,3	1,4	0,4	0,6	-1,5	-2,5	-0,9	-0,8	0,3	5,4*	2,2*	
GR	:	:	:	:	:	:	:	:	:	:	:	:	:	:	:	:	-5,9*	1,8*
E	:	:	:	:	:	:	:	:	:	:	-1,6	-2,0	2,4	-2,4	-0,1*	-0,6*	-1,2*	
F	-0,4:	5,9:	3,7	3,4	3,4	4,2	-0,6	4,3	1,4	0,7	0,7	3,1	-0,6	0,4	-0,4	1,4*	-0,1*	
IRL	5,8	8,1	5,5	-1,8	12,1	-5,8	-4,1	6,7	5,9	5,4	1,4	-4,0	1,0*	1,0*	3,7*	5,4*	4,5*	
I	9,2	0,6	1,6	-4,3	-5,4	-0,9	3,3	6,2	5,4	8,2	9,0	-0,8	1,0	0,3	0,4	1,7*	4,9*	
L	6,2	4,6	10,4	11,7	2,0	3,1	3,8	1,5	2,2	2,4	1,2	-2,4	0,4	0,5*	1,6*	5,6*	6,2*	
NL	5,5	4,0	4,5	5,6	3,8	0,5	1,0	2,0	0,9	-3,3	-5,8	-2,2	-2,0	-3,3	-2,3	0,9*	2,4*	
P	:	:	:	:	:	:	:	-15,6*	2,1*	2,3*	-2,6*	0,7*	-6,1*	-15,9*	4,1*	10,6*	3,8*	
UK	4,8	6,0	2,4	4,8	6,3	-2,9	-5,3	1,4	-0,7	8,9	2,9	-0,6	3,4	0,8	0,3	4,9*	3,6*	
EUR 9	5,5:	3,6:	3,4	2,8	1,7	0,0	0,1	3,0	1,2	3,5	1,9	-0,1	0,3*	-0,1*	0,1*	3,0*	2,5*	

Employees in central government (1000)

Total

Table Nr. 037

	1971	1972	1973	1974	1975	1976	1977	1978	1979	1980	1981	1982	1983	1984	1985	1986	1987
	1000																
EUR 12	:	:	:	:	:	:	:	:	:	11239:	11415:	11519:	11523:	11379:	11567:	11612:	11669:
B	361	373	384	394	401	414	417	429	442	445	449	452	446	443	447	449*	446*
DK	120	136	136	137	137	133	134	135	140	146	152	158	159	158	159	160	162*
D	2085	2190	2254	2339	2385	2415	2433	2480	2539	2569	2602	2621	2643	2639	2664	2664*	2664*
GR	:	:	:	:	115	120	127	129	137	150	153	159	165	170	173*	174*	175*
E	:	:	:	:	:	:	:	:	:	709	730	725	677	509	616*	635*	657*
F	2076:	2047	2102	2134	2240	2309	2480	2527	2526	2540	2565	2623	2657	2666	2698	2709	2709*
IRL	61	63	67	70	74	77	79	80	82	85	89	91	89	88	88	91*	89*
I	1638	1664	1719	1718	1739	1794	1852	1809	1823	1831	1880	1914	1927	1970	1983	2009*	2059*
L	10	10	10	11	11	11	11	12	12	12	12	12	12	12*	12*	12*	12*
NL	279	285	283	287	288	292	297	302	307	312	319	321	319	318	321	326*	325*
P	:	:	:	:	:	:	:	:	:	:	:	:	:	:	:	:	:
UK	2026	2049	2065	2157	2369	2417	2409	2414	2433	2440	2464	2443	2429	2406	2406	2383	2371*
EUR 10	:	:	:	:	9759	9982	10239	10317	10441	10530	10685	10794	10846	10870*	10951*	10977*	11012*

Salaries of sector S61 (central government)

Total

Table Nr. 038

	1971	1972	1973	1974	1975	1976	1977	1978	1979	1980	1981	1982	1983	1984	1985	1986	1987
	AT CURRENT PRICES																
	National currency																
EUR 12	:	:	:	:	:	:	117037	133548	151651	178801	205267	226812	248742	:	:	:	:
B	97123	114404	131564	156475	189953	216727	237839	258816	279497	303080	334410	353723	359247	376198	398094	409861*	406582*
DK	8712	9822	10932	12894	15116	15979	17157	18692	20501	20909	24007	27606	29897	31370	32428	32950	35817*
D	49710	55730	64410	74820	81020	85560	91310	97110	103640	111750	118710	121920	125790	128120	132900	137684*	142916*
GR	:	:	:	:	18493	23619	30047	37186	48535	60859	75998	98302	121717	153070	198820	234608*	270972*
E	148600	170300	205200	248800	301900	384500	494000	634600	780700	928167	1044399	1142546	1261234	1247548	1352924*	1464543*	1605139*
F	67472	74854	84921	100398	120098	141093	158640	181862	202905	234387	269241	315233	347381	376977	405315	430963	442168*
IRL	107660	132761	160634	187291	261568	313971	350152	411743	510270	642099	834082	947902	1026390	1119298	1166000*	1270938*	1349736*
I	4752	5211	6142	7389	8364	10272	13235	16170	19423	24831	32725	37885	44723	51490	56797	62058	69505*
L	3322	3786	4575	5721	6590	7641	8500	9117	10084	11445	12699	13388	14620	15707	16945	18800	20285*
NL	6830	7840	8930	10450	12070	13460	14660	15850	16990	18000	18320	18920	19050	18990	19190	19478*	19614*
P	:	:	:	:	:	:	62049	77705	95525	126186	154196	186898	235815	:	:	:	:
UK	3439	3905	4352	5774	7681	8971	9820	10885	12414	15849	17888	19087	20899	21754	23219	24679	26431*
EUR 10	:	:	:	:	80352	92714	106103	121173	137003	161446	185815	205758	226056	243306	261385*	279271*	296156*

Salaries of sector S61 (central government)

Per wage and salary earner

Table Nr. 056

	1971	1972	1973	1974	1975	1976	1977	1978	1979	1980	1981	1982	1983	1984	1985	1986	1987
	AT CURRENT PRICES National currency																
EUR 12	:	:	:	:	:	:	:	:	:	15909:	17982:	19690:	21587:	:	:	:	:
B	269039	306713	342615	397145	473698	523495	570357	603301	632346	681079	744788	782573	805486	849205	890591	912831*	911619*
DK	72600	72221	80382	94117	110336	120143	128037	138459	146436	143212	157941	174721	188031	198544	203950	205938	221093*
D	23842	25447	28576	31988	33971	35429	37530	39157	40819	43499	45623	46517	47594	48549	49887	51683*	53647*
GR	:	:	:	:	160809	196825	236591	288264	354270	405727	496719	618252	737679	900412	1149248*	1348321*	1548411*
E	:	:	:	:	:	:	:	:	:	1309121	1430684	1575926	1862975	2450978	2196305*	2306367*	2443134*
F	32501:	36568	40400	47047	53615	61106	63968	71968	80327	92278	104967	120180	130742	141402	150228	159086	163222*
IRL	1765	2107	2398	2676	3535	4078	4432	5147	6223	7554	9372	10417	11532	12719	13250*	13966*	15166*
I	2901	3132	3573	4301	4810	5726	7146	8939	10654	13561	17407	19794	23209	26137	28642	30890*	33757*
L	339673	374851	442884	536176	601277	682232	743657	783921	848821	951371	1049504	1115666	1218333	1308916*	1412083*	1566666*	1690417*
NL	24480	27509	31555	36411	41910	46096	49360	52483	55342	57692	57429	58941	59718	59717	59782	59748*	60351*
P	:	:	:	:	:	:	:	:	:	:	:	:	:	:	:	:	:
UK	1697	1906	2108	2677	3242	3712	4076	4509	5102	6495	7260	7813	8604	9042	9650	10356	11148*
EUR 10	:	:	:	:	8234	9288	10362	11745	13122	15332	17390	19062	20842	22383*	23869*	25441*	26894*

Salaries of sector 561 (central government)

Per wage and salary earner

Table Nr. 068

	1971	1972	1973	1974	1975	1976	1977	1978	1979	1980	1981	1982	1983	1984	1985	1986	1987
	AT 1980 PRICES																
	National currency																
EUR 12	:	:	:	:	:	:	:	:	:	15909:	16056:	15932:	16078:	:	:	:	:
B	507398	548846	577897	594090	630995	645983	656987	667384	673084	681079	689564	675269	646494	641671	642262	649888*	639587*
DK	179881	165464	164880	167924	179120	177538	171062	169326	162149	143212	140952	141462	141944	140711	137724	134242*	138179*
D	37112	37482	39595	41418	41413	41461	42396	43056	43183	43499	42978	41819	41454	41252	41521	43464*	44286*
GR	:	:	:	:	325315	350992	376974	407186	430562	405727	402493	414632	419594	432585	465367*	447158*	452437*
E	:	:	:	:	:	:	:	:	:	1309121	1251154	1203649	1267237	1506282	1246420*	1199376*	1198451*
F	75460:	80283	82911	85312	87235	90500	86612	89961	90927	92278	93021	95749	95112	95953	96662	99707*	99581*
IPL	5939	6468	6596	6362	7123	6845	6519	7012	7379	7554	7839	7520	7570	7770	7768*	7906*	8318*
I	10783	10940	11091	11036	10485	10571	11163	12369	12810	13561	14757	14477	14779	14940	14979	15235*	15966*
L	616616	646853	728223	801030	815287	845052	870033	886372	912751	951371	965631	926382	935537	944352*	985762*	1090431*	1160970*
NL	46765	48542	51307	54053	56512	57032	57534	58529	59176	57692	54031	52678	51958	50698	49452	49437*	50387*
P	:	:	:	:	:	:	:	:	:	:	:	:	:	:	:	:	:
UK	5436	5727	5849	6346	6214	6149	5878	5953	5930	6495	6519	6456	6771	6792	6890	7129*	7385*
EUR 10	:	:	:	:	14112	14244	14192	14728	14880	15332	15542	15447	15560	15618*	15723*	16194*	16557*

Salaries of sector S61 (central government)

Per wage and salary earner

Table Nr. 070

	1971	1972	1973	1974	1975	1976	1977	1978	1979	1980	1981	1982	1983	1984	1985	1986	1987
	AT 1980 PRICES																
	1980 = 100																
EUR 12	:	:	:	:	:	:	:	:	:	100,0:	100,9:	100,1:	101,1:	:	:	:	:
B	74,5	80,6	84,9	87,2	92,6	94,8	96,5	98,0	98,8	100,0	101,2	99,1	94,9	94,2	94,3	95,4*	93,9*
DK	125,6	115,5	115,1	117,3	125,1	124,0	119,4	118,2	113,2	100,0	98,4	98,8	99,1	98,3	96,2	93,7*	96,5*
D	85,3	86,2	91,0	95,2	95,2	95,3	97,5	99,0	99,3	100,0	98,8	96,1	95,3	94,8	95,5	99,9*	101,8*
GR	:	:	:	:	80,2	86,5	92,9	100,4	106,1	100,0	99,2	102,2	103,4	106,6	114,7*	110,2*	111,5*
E	:	:	:	:	:	:	:	:	:	100,0	95,6	91,9	96,8	115,1	95,2*	91,6*	91,5*
F	81,8:	87,0	89,8	92,5	94,5	98,1	93,9	97,5	98,5	100,0	100,8	103,8	103,1	104,0	104,8	108,0*	107,9*
IRL	78,6	85,6	37,3	84,2	94,3	90,6	86,3	92,8	97,7	100,0	103,8	99,5	100,2	102,9	102,8*	104,7*	110,1*
I	79,5	80,7	81,8	81,4	77,3	78,0	82,3	91,2	94,5	100,0	108,8	106,7	109,0	110,2	110,5	112,3*	117,7*
L	64,8	68,0	76,5	84,2	85,7	88,8	91,5	93,2	95,9	100,0	101,5	97,4	98,3	99,3*	103,6*	114,6*	122,0*
NL	81,1	84,1	88,9	93,7	98,0	98,9	99,7	101,5	102,6	100,0	93,7	91,3	90,1	87,9	85,7	85,7*	87,3*
P	:	:	:	:	:	:	:	:	:	:	:	:	:	:	:	:	:
UK	83,7	88,2	90,0	97,7	95,7	94,7	90,5	91,6	91,3	100,0	100,4	99,4	104,2	104,6	106,1	109,8*	113,7*
EUR 10	:	:	:	:	92,0	92,9	92,6	96,1	97,1	100,0	101,4	100,7	101,5	101,9*	102,6*	105,6*	108,0*

- 198 -

Salaries of sector: S61 (central government)

Per wage and salary earner

Table Nr. 071

	1971	1972	1973	1974	1975	1976	1977	1978	1979	1980	1981	1982	1983	1984	1985	1986	1987
	AT 1980 PRICES																
	T/T-1 %																
EUR 12	:	:	:	:	:	:	:	:	:	:	0,9:	-0,8:	0,9:	:	:	:	:
B	4,4	8,2	5,3	2,8	6,2	2,4	1,7	1,6	0,9	1,2	1,2	-2,1	-4,3	-0,7	0,1	1,2*	-1,6*
DK	0,2	-8,0	-0,4	1,8	6,7	-0,9	-3,6	-1,0	-4,2	-11,7	-1,6	0,4	0,3	-0,9	-2,1	-2,5*	2,9*
D	9,0	1,0	5,6	4,6	0,0	0,1	2,3	1,6	0,3	0,7	-1,2	-2,7	-0,9	-0,5	0,7	4,7*	1,9*
GR	:	:	:	:	:	7,9	7,4	8,0	5,7	-5,8	-0,8	3,0	1,2	3,1	7,6*	-3,9*	1,2*
E	:	:	:	:	:	:	:	:	:	:	-4,4	-3,8	5,3	18,9	-17,3*	-3,8*	-0,1*
F	2,6:	6,4:	3,3	2,9	2,3	3,7	-4,3	3,9	1,1	1,5	0,8	2,9	-0,7	0,9	0,7	3,1*	-0,1*
IRL	2,1	8,9	2,0	-3,6	12,0	-3,9	-4,8	7,6	5,2	2,4	3,8	-4,1	0,7	2,6	0,0*	1,8*	5,2*
I	8,7	1,5	1,4	-0,5	-5,0	0,8	5,6	10,8	3,6	5,9	8,8	-1,9	2,1	1,1	0,3	1,7*	4,8*
L	7,7	4,9	12,6	10,0	1,8	3,7	3,0	1,9	3,0	4,2	1,5	-4,1	1,0	0,9*	4,4*	10,6*	6,5*
NL	7,7	3,8	5,7	5,4	4,5	0,9	0,9	1,7	1,1	-2,5	-6,3	-2,5	-1,4	-2,4	-2,5	0,0*	1,9*
P	:	:	:	:	:	:	:	:	:	:	:	:	:	:	:	:	:
UK	5,3	5,4	2,1	8,5	-2,1	-1,0	-4,4	1,3	-0,4	9,5	0,4	-1,0	4,9	0,3	1,4	3,5*	3,6*
EUR 10	:	:	:	:	:	0,9	-0,4	3,8	1,0	3,0	1,4	-0,6	0,7	0,4*	0,7*	3,0*	2,2*

Final national consumption of households (P3A)

Total

Table Nr. 079

	1971	1972	1973	1974	1975	1976	1977	1978	1979	1980	1981	1982	1983	1984	1985	1986	1987
	PRICE INDICES																
	1980 = 100																
EUR 12	38,4:	40,9:	44,5:	50,9*	58,2*	65,0*	72,8*	79,7*	88,1*	100,0*	112,0*	123,6*	134,2*	143,6*	152,1*	157,5*	163,0*
B	53,0	55,9	59,3	66,8	75,1	81,0	86,8	90,4	93,9	100,0	108,0	115,9	124,6	132,3	138,7	140,5*	142,5*
DK	40,4	43,6	48,8	56,0	61,6	67,7	74,8	81,8	90,3	100,0	112,1	123,5	132,5	141,1	148,1	153,4*	160,0*
D	63,7	67,3	71,7	77,0	81,8	85,2	88,4	90,9	94,5	100,0	106,0	110,9	114,5	117,2	119,7	118,9*	121,1*
GR	29,9	30,9	35,5	43,9	49,4	56,1	62,8	70,8	82,3	100,0	123,4	149,1	175,8	208,1	247,0	301,5*	342,2*
E	26,3	28,5	31,7	37,3	43,1	50,3	62,4	74,4	86,5	100,0	114,3	130,9	147,0	162,7	176,2	192,3*	203,9*
F	43,1	45,5	48,7	55,1	61,5	67,5	73,9	80,0	88,3	100,0	112,8	125,5	137,5	147,4	155,4	159,6*	163,9*
IRL	29,7	32,6	36,3	42,1	49,6	59,6	68,0	73,4	84,3	100,0	119,6	138,5	152,3	163,7	170,6	176,7*	182,3*
I	26,9	28,6	32,2	39,0	45,9	54,2	64,0	72,3	83,2	100,0	118,0	136,7	157,0	174,9	191,2	202,8	211,4*
L	55,1	58,0	60,8	66,9	73,8	80,7	85,5	88,4	93,0	100,0	108,7	120,4	130,2	138,6	143,2	143,7*	145,6*
NL	52,3	56,7	61,5	67,4	74,2	80,8	85,8	89,7	93,5	100,0	106,3	111,9	114,9	117,8	120,9	120,9*	119,8*
P	22,1:	24,1:	25,7:	30,0*	40,0*	40,0*	50,0*	70,0*	80,0*	100,0*	120,0*	140,0*	180,0*	240,0*	280,0*	312,8*	342,4*
UK	31,2	33,3	36,0	42,2	52,2	60,4	69,3	75,7	86,0	100,0	111,4	121,0	127,1	133,1	140,1	145,3*	151,0*

Gross domestic product at market prices (M1)

Per occupied person

Table Nr. 085

	1971	1972	1973	1974	1975	1976	1977	1978	1979	1980	1981	1982	1983	1984	1985	1986	1987
	VOLUME INDICES																
	1980 = 100																
EUR 12	78,7*	82,3*	86,3*	87,7*	87,8*	92,4*	93,9*	96,5*	99,0*	100,0*	101,4*	102,9*	105,1*	107,4*	109,4*	111,3*	113,1*
B	76,8	81,0	84,6	86,9	86,7	92,0	92,5	95,2	96,1	100,0	100,5	103,7	104,5	106,2	107,0	108,5*	110,0*
DK	87,4	90,2	92,3	91,8	92,3	96,6	97,3	97,7	100,0	100,0	100,4	103,0	105,0	106,0	106,7	108,1*	107,5*
D	77,5	81,0	84,2	85,5	86,6	92,1	94,9	97,1	99,7	100,0	100,9	102,0	105,0	107,8	109,8	111,4*	112,4*
GR	72,5	78,6	83,5	80,3	85,1	88,5	90,9	96,6	99,5	100,0	95,0	95,6	95,0	97,3	98,4	99,3*	98,5*
E	67,1	71,8	75,6	79,5	81,8	85,2	88,7	92,8	95,0	100,0	103,2	105,8	108,7	115,1	119,3	120,3*	121,6*
F	76,9	80,9	84,1	86,1	86,9	90,6	92,4	95,9	99,0	100,0	101,0	102,7	103,9	106,5	108,0	110,6*	112,7*
I	71,4	76,4	79,5	81,9	86,2	88,2	93,7	98,0	97,9	100,0	104,3	105,7	105,9	112,2	117,6	120,0*	122,3*
I	78,7	82,1	87,3	89,5	86,2	90,5	91,6	93,5	97,1	100,0	101,1	100,8	100,8	103,6	105,0	107,0	109,7*
L	85,0	88,3	94,3	95,3	88,9	91,1	92,7	96,8	99,3	100,0	98,7	100,5	103,8	109,5	111,9	112,4*	113,9*
NL	79,5	82,8	86,7	90,0	90,5	95,1	97,1	98,8	99,9	100,0	100,8	101,9	105,3	108,3	108,9	109,8*	110,9*
P	77,8*	84,6*	94,7*	96,7*	92,1*	109,5*	98,3*	89,7*	100,6*	100,0*	98,6*	105,1*	102,5*	98,5*	103,0*	107,3*	110,5*
UK	87,7	89,8	94,5	93,4	93,1	97,5	98,5	101,4	102,1	100,0	102,8	105,7	111,0	111,2	113,8	115,9*	118,3*

Gross domestic product at market prices (N1)

Per occupied person

Table Nr. 086

	1971	1972	1973	1974	1975	1976	1977	1978	1979	1980	1981	1982	1983	1984	1985	1986	1987
	Volume change																
	T/T-1 %																
EUR 12	3,4*	4,5*	4,9*	1,7*	0,1*	5,2*	1,7*	2,8*	2,6*	1,0*	1,4*	1,5*	2,1*	2,3*	1,8*	1,8*	1,6*
B	2,6	5,4	4,5	2,6	-0,1	6,0	0,6	2,9	0,9	4,1	0,5	3,2	0,7	1,7	0,7	1,5*	1,3*
DK	2,0	3,1	2,4	-0,6	0,6	4,6	0,8	0,4	2,3	0,0	0,4	2,6	1,9	1,0	0,6	1,3*	-0,6*
D	2,3	4,4	4,0	1,6	1,3	6,3	3,1	2,3	2,7	0,3	0,9	1,1	3,0	2,6	1,9	1,5*	0,9*
GR	6,8	8,4	6,3	-3,8	5,9	4,0	2,6	6,3	3,1	0,5	-5,0	0,6	-0,6	2,5	1,1	1,0*	-0,8*
E	5,2	7,0	5,3	5,2	2,9	4,1	4,1	4,6	2,4	5,2	3,2	2,5	2,7	5,9	3,6	0,9*	1,0*
F	4,9	5,3	3,9	2,3	1,0	4,2	2,0	3,8	3,3	1,0	1,0	1,7	1,2	2,5	1,4	2,4*	1,9*
IPL	3,3	7,0	4,0	3,1	5,3	2,3	6,3	4,6	-0,1	2,1	4,3	1,4	0,2	5,9	4,8	2,1*	1,9*
I	1,7	4,3	6,2	2,6	-3,8	5,0	1,2	2,0	3,8	3,0	1,1	-0,3	0,0	2,7	1,3	1,9	2,6*
L	-0,3	3,8	6,8	1,1	-6,8	2,4	1,8	4,4	2,6	0,7	-1,3	1,9	3,3	5,5	2,2	0,4*	1,3*
NL	3,7	4,2	4,6	3,8	0,6	5,1	2,1	1,7	1,1	0,1	0,8	1,1	3,4	2,8	0,6	0,7*	1,0*
P	6,4*	8,8*	11,9*	2,2*	-4,8*	18,8*	-10,2*	-8,7*	12,1*	-0,6*	-1,4*	6,6*	-2,5*	-3,9*	4,6*	4,1*	3,0*
UK	3,7	2,4	5,2	-1,2	-0,2	4,7	1,0	2,9	0,7	-2,0	2,8	2,8	5,0	0,2	2,4	1,8*	2,1*

Compensation of employees (PIB)

Per wage and salary earner

Table Nr. 088

	1971	1972	1973	1974	1975	1976	1977	1978	1979	1980	1981	1982	1983	1984	1985	1986	1987
	AT CURRENT PRICES																
	National currency																
EUR 12	3885	4345	4981	5876*	6981*	8034*	9125	10290	11613	13297*	15024*	16684*	18361*	19694*	21044*	22348*	23622*
B	235399	268325	303302	358618	417992	484113	526024	565275	596863	651850	694085	751284	796316	842429	879655	901057*	933305*
DK	38670	41739	47221	55917	63729	71155	78064	85208	93254	102616	112058	125395	135608	142573	148845	155238*	166113*
D	18115	19917	22330	24900	26694	28797	30707	32430	34337	36711	38620	40235	41753	43179	44485	46205*	47833*
GR	70015	78893	93002	110651	132801	161188	197680	243732	300829	349369	424496	542431	658139	797750	970941	1099538*	1207989*
E	176605	207330	244681	299252	360655	448358	570712	718521	860769	962532	1116407	1272529	1458074	1646224	1817342	1970857*	2116619*
F	25745	28382	32000	37585	44470	50991	57409	64553	73012	83747	95732	108887	120476	130208	137823	144294*	149547*
IRL	1328	1553	1860	2205	2798	3355	3843	4443	5301	6472	7547	8644	9634	10766	11563	12338*	13117*
I	2476	2750	3288	4014	4855	5870	7125	8279	9758	11954	14650	17020	19749	22008	24249	26115	28320*
L	244983	268857	299520	368100	413328	459407	504988	534688	571215	622213	675108	722469	772659	828561	872321	908594*	948613*
NL	19241	21711	25044	28978	32842	36400	39490	42325	44843	47308	48951	51766	53411	53630	54365	55649*	56762*
P	36013	41930	49461	69019*	92360*	108209*	132051	156588	187925	230369*	279383*	334359*	398862*	454108*	544276*	644127*	726358*
UK	1487	1682	1904	2263	2969	3410	3778	4286	4933	5892	6668	7288	7948	8356	8964	9623*	10287*
EUR 11	3939	4403	5045	5941	7053	8104	9210	10416	11745	13460	15215	16898	18620	20006	21380	22707*	24000*

National currency units: I except I: 1000

Compensation of employees (PIB)

Per wage and salary earner

Table Nr. 095

	1971	1972	1973	1974	1975	1976	1977	1978	1979	1980	1981	1982	1983	1984	1985	1986	1987
	AT 1980 PRICES																
	National currency																
EUR 12	10193:	10659:	11245:	11745*	12098*	12486:	12664*	12922*	13154*	13297*	13541*	13612*	13795*	13895*	13994*	14076*	14288*
B	443371	475741	501548	526756	547720	589076	595480	613527	619430	651850	661623	669410	667040	670157	665814	650606*	655979*
DK	90710	89665	91667	96001	97318	99592	99866	99223	100931	102616	101800	103035	103039	102508	101486	100911*	102916*
D	28132	29369	30958	32248	32619	33958	34911	35346	35983	36711	37128	37060	37243	37778	38076	38366*	38923*
GR	245247	263104	259700	255497	272922	287124	311749	340317	354040	349369	353717	361825	368515	371844	384722	365979*	355027*
E	668554	722073	762069	799485	825768	879743	911727	954947	980353	962532	996960	998642	1025171	1043581	1059451	1032447*	1042659*
F	60305	62604	65491	69212	72213	75216	77521	79981	81926	83747	85623	86457	87346	88052	88011	88088*	88359*
IRL	4372	4506	4683	5233	5529	5476	5539	5793	6080	6472	6427	6363	6373	6702	6853	6953*	7114*
I	9144	9559	10240	10553	10864	11129	11344	11577	11773	11954	12360	12359	12436	12574	12732	12693	12979*
L	452083	468862	467099	491064	562293	555352	604723	608336	614904	622213	624348	604137	599667	605009	616184	605745*	614601*
NL	37126	38305	40533	42966	44188	44949	45721	46475	47384	47308	46387	46265	46861	46057	45594	46599*	47968*
P	151159:	163219:	175697:	205929*	225668*	261247:	255439*	216326*	235904*	230360*	234732*	240209*	228343*	205310*	203587*	205204*	210697*
UK	5037	5262	5563	5753	5938	5932	5769	5878	5907	5892	5980	6068	6301	6362	6449	6673*	6824*
EUR 11	10336	10802	11390	11876	12222	12594	12782	13080	13303	13460	13713	13787	13989	14115	14217	14302*	14516*

National currency units: 1 except I: 1000

Compensation of employees (P10)

Per wage and salary earner

Table Nr. 097

	1971	1972	1973	1974	1975	1976	1977	1978	1979	1980	1981	1982	1983	1984	1985	1986	1987
	AT 1980 PRICES																
	1980 = 100																
EUR 12	76,7:	80,2:	84,6:	88,3*	91,0*	93,9:	95,2*	97,2*	98,9*	100,0*	101,8*	102,4*	103,7*	104,5*	105,2*	105,9*	107,5*
B	68,0	73,0	76,9	80,8	84,0	90,4	91,4	94,1	95,0	100,0	101,5	102,7	102,3	102,8	102,1	99,8*	100,6*
DK	88,4	87,4	89,3	93,6	94,8	97,1	97,3	96,7	98,4	100,0	99,2	100,4	100,4	99,9	98,9	98,3*	100,3*
D	76,6	80,0	84,3	87,8	88,9	92,5	95,1	96,3	98,0	100,0	101,1	101,0	101,5	102,9	103,7	104,5*	106,0*
GR	70,2	75,3	74,3	73,1	78,1	82,2	89,2	97,4	101,3	100,0	101,2	103,6	105,5	106,4	110,1	104,8*	101,6*
E	69,5	75,0	79,2	83,1	85,8	91,4	94,7	99,2	101,9	100,0	103,6	103,8	106,5	108,4	110,1	107,3*	108,3*
F	72,0	74,8	78,2	82,6	86,2	89,8	92,6	95,5	97,8	100,0	102,2	103,2	104,3	105,1	105,1	105,2*	105,5*
IPL	67,6	69,6	72,4	80,9	85,4	84,6	85,6	89,5	94,0	100,0	99,3	98,3	98,5	103,6	105,9	107,4*	109,9*
I	76,5	80,0	85,7	88,3	90,9	93,1	94,9	96,8	98,5	100,0	103,4	103,4	104,0	105,2	106,5	106,2	108,6*
L	72,7	75,4	75,1	78,9	90,4	89,3	97,2	97,8	98,8	100,0	100,3	97,1	96,4	97,2	99,0	97,4*	98,8*
NL	78,5	81,0	85,7	90,8	93,4	95,0	96,6	98,2	100,2	100,0	98,1	97,8	99,1	97,4	96,4	98,5*	101,4*
P	65,6:	70,9:	76,3:	89,4*	98,0*	113,4:	110,9*	93,9*	102,4*	100,0*	101,9*	104,3*	99,1*	89,1*	88,4*	89,1*	91,5*
UK	85,5	89,3	94,4	97,6	100,8	100,7	97,9	99,8	100,2	100,0	101,5	103,0	106,9	108,0	109,4	113,3*	115,8*
EUR 11	76,8	80,3	84,6	88,2	90,8	93,6	95,0	97,2	98,8	100,0	101,9	102,4	103,9	104,9	105,6	106,3*	107,8*

Compensation of employees (PIB)

Per wage and salary earner

Table Nr. 098

	1971	1972	1973	1974	1975	1976	1977	1978	1979	1980	1981	1982	1983	1984	1985	1986	1987
	AT 1980 PRICES																
	T/T-1 %																
EUR 12	4,2:	4,6:	5,5:	4,4:	3,0*	3,2:	1,4:	2,0*	1,8*	1,1*	1,8*	0,5*	1,3*	0,7*	0,7*	0,6*	1,5*
B	5,7	7,3	5,4	5,0	4,0	7,6	1,1	3,0	1,0	5,2	1,5	1,2	-0,4	0,5	-0,6	-2,3*	0,8*
OK	3,7	-1,2	2,2	4,7	1,4	2,3	0,3	-0,6	1,7	1,7	-0,8	1,2	0,0	-0,5	-1,0	-0,6*	2,0*
D	3,3	4,4	5,4	4,2	1,2	4,1	2,8	1,2	1,8	2,0	1,1	-0,2	0,5	1,4	0,8	0,8*	1,5*
GR	6,0	7,3	-1,3	-1,6	6,8	5,2	8,6	9,2	4,0	-1,3	1,2	2,3	1,8	0,9	3,5	-4,9*	-3,0*
E	5,8	8,0	5,5	4,9	3,3	6,5	3,6	4,7	2,7	-1,8	3,6	0,2	2,7	1,8	1,5	-2,5*	1,0*
F	5,4	3,8	4,6	5,7	4,3	4,2	3,1	3,2	2,4	2,2	2,2	1,0	1,0	0,8	0,0	0,1*	0,3*
IRL	3,1	3,1	3,9	11,7	5,6	-0,9	1,1	4,6	5,0	6,4	-0,7	-1,0	0,2	5,2	2,3	1,5*	2,3*
I	5,5	4,5	7,1	3,1	2,9	2,4	1,9	2,1	1,7	1,5	3,4	0,0	0,6	1,1	1,3	-0,3	2,3*
L	8,9	3,7	-0,4	5,1	14,5	-1,2	8,9	0,6	1,1	1,2	0,3	-3,2	-0,7	0,9	1,8	-1,7*	1,5*
NL	5,3	3,2	5,8	6,0	2,8	1,7	1,7	1,6	2,0	-0,2	-1,9	-0,3	1,3	-1,7	-1,0	2,2*	2,9*
P	10,7:	8,0:	7,6:	17,2:	9,6*	15,8:	-2,2:	-15,3*	9,1*	-2,4*	1,9*	2,3*	-4,9*	-10,1*	-0,8*	0,8*	2,7*
UK	1,8	4,5	5,7	3,4	3,2	-0,1	-2,7	1,9	0,5	-0,2	1,5	1,5	3,8	1,0	1,4	3,5*	2,3*
EUR 11	4,1	4,5	5,4	4,3	2,9	3,0	1,5	2,3	1,7	1,2	1,9	0,5	1,5	0,9	0,7	0,6*	1,5*

C H A P T E R I V

Statistical Commentary

Chapter IV - Statistical Commentary

1. As has been the practice in previous reports, the Statistical Office of the European Community has provided a short comment on the statistical aspects of its report on the changes in the cost-of-living of officials in the Community and the salaries of officials in the Member States.

2. Changes in the cost-of-living

In Table D all the details for the calculation of the indices in Member States are brought together. The indices are used for deflating nominal indices.

The procedure has remained unaltered for some years and the resulting values have given rise to no comment regarding methodology.

The rate of increase of prices in most countries last year was already so small that further reduction was possible for the period of reference. Even in countries which showed a rather high inflation last year the rate decreased considerably.

For the third consecutive year no intermediate adjustment was required for Brussels for 1st January 1987.

For the calculation of the common cost-of-living index for European officials the weightings taken from the family budget survey in 1984 have been used. With the exception of rent and household services items, which were taken from a survey covering European officials, all single indices have been supplied by the national statistical offices.

The difference between the Common Index and the national general index is explained by the difference in the weightings.

3. Change in civil servants' remuneration (Specific Indicator)

Civil servants in the majority of Member States got a rather modest nominal increase in salary. As, however, the price increase was very low, after deducting the price index a rather significant positive index came out. In two countries civil servants got a considerable increase of purchasing power and in two other countries civil servants' purchasing power decreased by more than 3 %.

The Community average increase by categories shows more or less the same figures for all four categories. This average results, however, from very different indices within the Member States.

A comparison of the evolution of gross and net remuneration shows - for this year too - a higher increase for net earnings than for gross earnings. The difference is however less significant than it was last year.

The biggest positive difference appears in the two countries which show also the highest increase in general and specially for the higher grades. The reason for this phenomenon seems to be changes in taxation. But low inflation and other reasons may play a role too.

Table L

Comparison of the evolution of gross and net remuneration
(Indices at constant prices)

	Gross	Net	Difference
Germany	2,6	1,9	- 0,7
France	- 4,0	- 3,4	+ 0,6
Italy	3,6	2,8	- 0,8
Netherlands	0,6	1,2	+ 0,6
Belgium	- 1,6	- 0,9	+ 0,7
Luxembourg	5,5	8,9	+ 3,4
United Kingdom	0,8	2,6	+ 1,8
Ireland	1,5	- 0,2	- 1,7
Denmark	3,7	7,7	+ 4,0
Greece	- 7,8	- 7,2	+ 0,6
Spain	2,7	1,9	- 0,8
Portugal	2,8	2,8	± 0,0
Community average	0,5	0,8	+ 0,3

4. Differences in trends between the Specific Indicator and the Control Indicator

As EUROSTAT has explained on several occasions the two indicators are based on quite different survey methods and calculation procedures; therefore these two indicators are not directly comparable.

In view of this fact, the difference formed between the two indicators appears within the limits which were to be expected.