

Consumer price index

Indice des prix à la consommation

7/8 1986 Monthly Mensuel

PRICES : Fall of 0.1% in July and rise of 0.1% in August for EUR 12

After the slight increases in the CPI for the Community (EUR 12) during the first half of the year a decrease of 0.1% was recorded in July. This was a novelty because a decrease in the EC-index had never before been registered.

In August the CPI for EUR 12 went up by 0.1% compared with July. This evolution is largely influenced by the fall in prices of oil products and seasonal food products accompanied by the effects of the summer sales.

For the individual Member States the percentage changes of July over June and of August over July were as follows:

| | July/June | August/July | | July/June | August/July |
|--------------|-----------|-------------|----------------|-----------|-------------|
| Germany (FR) | -0.5 | -0.2 | United Kingdom | -0.3 | +0.3 |
| France | +0.1 | +0.1 | Ireland (A/M) | | +0.2 |
| Italy | 0.0 | +0.2 | Denmark | -0.7 | +0.5 |
| Netherlands | -0.8 | +0.1 | Greece | -0.5 | 0.0 |
| Belgium | 0.0 | +0.1 | Spain | +0.1 | +0.3 |
| Luxembourg | -0.2 | -0.3 | Portugal | 0.0 | +0.1 |

The quarterly index for Ireland rose by 0.2% from mid-May to Mid-August 1986.

The rate of increase over-the-year for EUR 12 was 3.2% in July and 3.3% in August.

For the individual countries the percentage changes over the last 12 months were as follows:

There were reductions in Germany (-0.4%), the Netherlands (-0.3%) and Luxembourg (-0.5%).

Increases were recorded in Belgium (0.8%), France (2.0%), the United Kingdom (2.4%), Ireland (3.1%), Denmark (4.3%), Italy (5.7%), Spain (9.5%), Portugal (11.5%) and Greece (24.7%).

It can be estimated that during the same period (August '85/August '86) prices rose by 1.5% in the USA and by 1.0% in Japan.

The corresponding rates for the non-Community countries for which Eurostat publishes figures are:

| | | | | | |
|-------------|------|---------|------|--------|------|
| Switzerland | 0.7% | Finland | 3.4% | Canada | 4.3% |
| Austria | 1.7% | Sweden | 4.0% | Norway | 8.1% |



DE EUROPÆISKE FÆLLESSKABERS STATISTISKE KONTOR
STATISTISCHES AMT DER EUROPÄISCHEN GEMEINSCHAFTEN
ΣΤΑΤΙΣΤΙΚΗ ΥΠΗΡΕΣΙΑ ΤΩΝ ΕΥΡΩΠΑΪΚΩΝ ΚΟΙΝΟΤΗΤΩΝ
STATISTICAL OFFICE OF THE EUROPEAN COMMUNITIES
OFICINA ESTADÍSTICA DE LAS COMUNIDADES EUROPEAS
OFFICE STATISTIQUE DES COMMUNAUTÉS EUROPÉENNES
ISTITUTO STATISTICO DELLE COMUNITÀ EUROPEE
BUREAU VOOR DE STATISTIEK DER EUROPESE GEMEENSCHAPPEN
SERVIÇO DE ESTATÍSTICA DAS COMUNIDADES EUROPEIAS

L-2920 Luxembourg — Tél. 43011 — Téléx : Comeur Lu 3423
B-1049 Bruxelles, Bâtiment Berlaymont, Rue de la Loi 200 (Bureau de liaison) — Tél. 235 11 11

The information included in this bulletin has been taken from the Cronos data bank, which is accessible via the different host companies. For all information about these host companies contact Eurostat in Luxembourg, tel. 4301-3220. To obtain specifications of the principal characteristics of the series contained in this bulletin contact Luxembourg, tel.

4301-3202 or 4301-3511

Les informations reprises dans ce bulletin sont extraites de la banque de données Cronos, qui est accessible via différents serveurs. Pour toute information concernant ces serveurs s'adresser à l'Eurostat, Luxembourg, tél. 4301-3220. Pour obtenir des précisions sur les caractéristiques principales des séries contenues dans ce bulletin s'adresser à Luxembourg, tél. **4301-3202 ou 4301-3511**

Luxembourg : Office des publications officielles des Communautés européennes, 1986

Reproduction is authorized, except by commercial data-base networks, subject to acknowledgement of the source.
For conditions relating to reproduction by data-base services, application should be made to Eurostat, L-2920 Luxembourg.

La reproduction, autorisée sauf sur réseau informatique commercial, est subordonnée à l'indication de la source.
Toute demande concernant les conditions de reproduction sur réseau informatique devra être envoyée à l'Eurostat, L-2920 Luxembourg.

VERBRAUCHERPREISE
GESAMTINDEX

CONSUMER PRICES
GENERAL INDEX

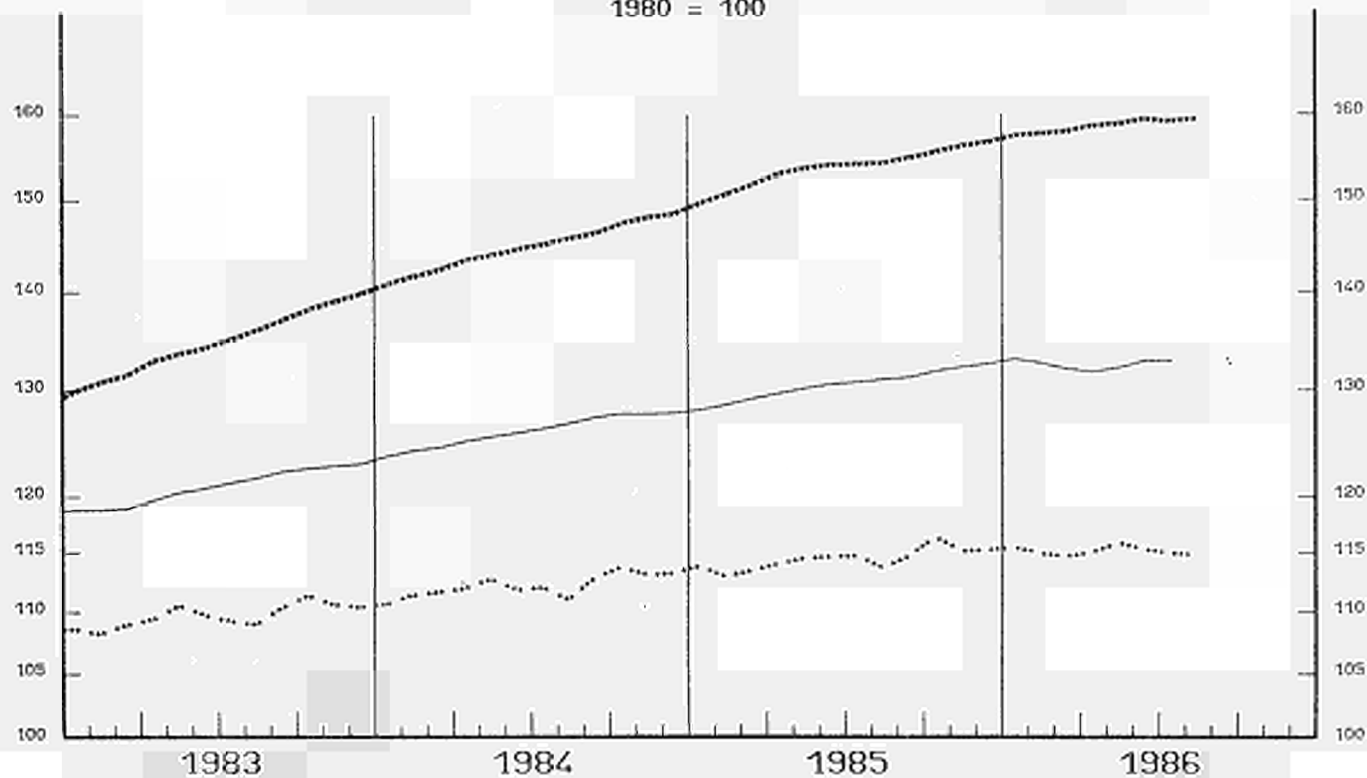
PRIX A LA CONSOMMATION
INDICE GENERAL

— USA

..... EUR 12

..... JAPAN

1980 = 100



EINFACH-LOGARITHMISCHE SKALA

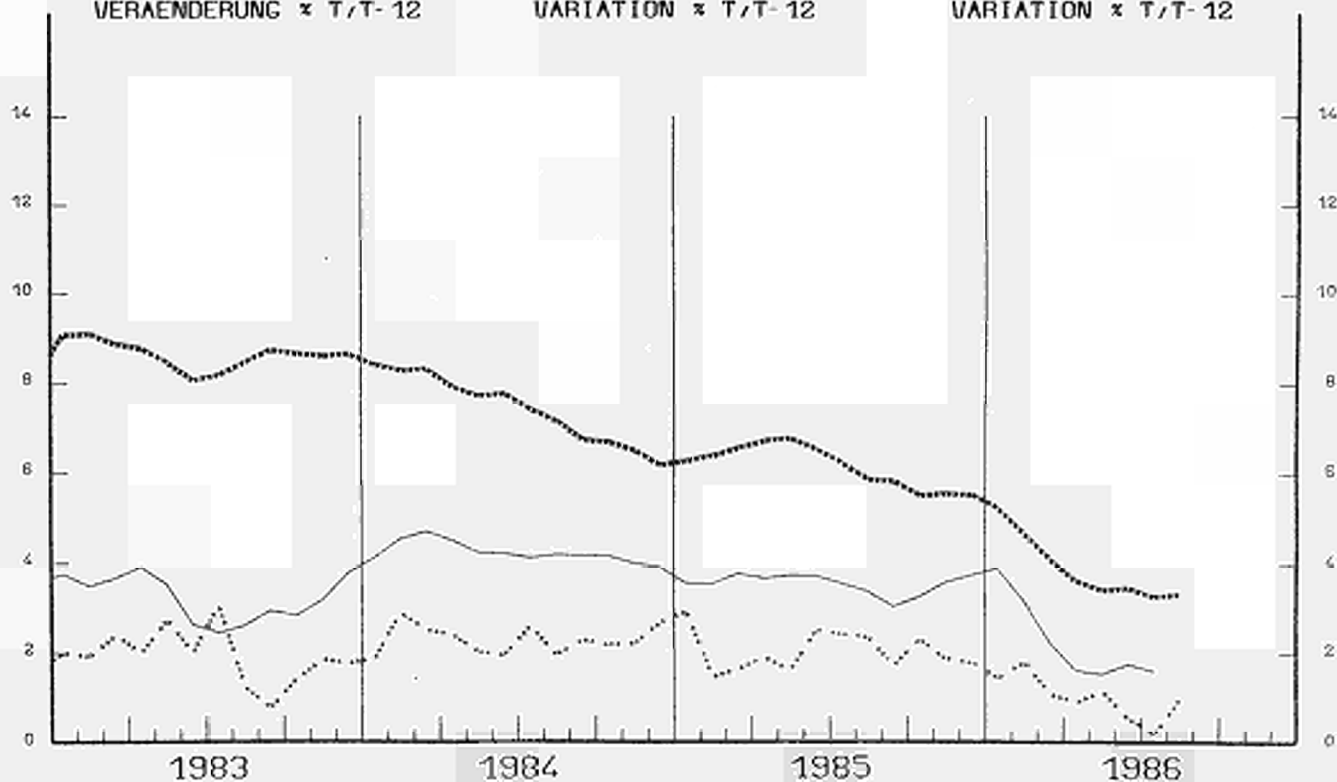
SEMI-LOGARITHMIC SCALE

ECHELLE SEMI-LOGARITHMIQUE

VERÄNDERUNG * T/T-12

VARIATION * T/T-12

VARIATION * T/T-12



CONSUMER PRICES

A

PRIX A LA CONSOMMATION

GENERAL INDEX

INDICE GENERAL

| | EUR 10 | BR DEUTSCH LAND | FRANCE | ITALIA | NEDER= LAND | BELGIQUE BELGIE | LUXEM= BOURG | UNITED KINGDOM | IRELAND | DANMARK | ELLAS | ESPANA | PORTUGAL | EUR 12 | USA | JAPAN |
|---------|--|-----------------------|--------|--------|----------------|--------------------|-----------------|-------------------|------------|---|-----------------|--------|----------|--------|-------|--------|
| | PRICE INDICES | | | | | | | | 1980 = 100 | | INDICES DE PRIX | | | | | |
| 1981 O | 111.7 | 106.3 | 113.4 | 117.8 | 106.7 | 107.6 | 108.1 | 111.9 | 120.4 | 111.7 | 124.5 | 114.6 | 120.0 | 112.1 | 110.3 | 104.9 |
| 1982 O | 123.0 | 111.9 | 126.8 | 137.2 | 112.8 | 117.0 | 118.2 | 121.5 | 141.1 | 123.0 | 150.5 | 131.1 | 147.3 | 124.2 | 117.1 | 107.7 |
| 1983 O | 132.7 | 115.6 | 139.0 | 157.3 | 115.9 | 126.0 | 128.4 | 127.1 | 155.8 | 131.5 | 181.4 | 147.0 | 184.3 | 134.8 | 120.9 | 109.7 |
| 1984 O | 141.2 | 118.4 | 149.3 | 174.3 | 119.6 | 134.0 | 135.7 | 133.4 | 169.2 | 139.8 | 214.6 | 163.6 | 237.5 | 144.8 | 126.1 | 112.1 |
| 1985 O | 149.1 | 121.0 | 158.0 | 190.3 | 122.3 | 140.5 | 141.3 | 141.5 | 178.4 | 146.4 | 256.3 | 178.0 | 284.1 | 153.7 | 130.5 | 114.4 |
| 1985 A | 149.7 | 120.7 | 159.1 | 191.3 | 122.2 | 141.3 | 142.7 | 142.9 | 180.2 | 146.2 | 251.6 | 178.3 | 286.5 | 154.2 | 131.1 | 113.6 |
| 1985 S | 150.2 | 120.9 | 159.3 | 192.3 | 122.8 | 141.5 | 142.7 | 142.8 | : | 147.0 | 264.1 | 180.3 | 286.7 | 154.8 | 131.5 | 114.7 |
| 1985 O | 150.8 | 121.1 | 159.8 | 194.3 | 123.2 | 141.4 | 143.9 | 143.0 | : | 147.4 | 272.9 | 181.0 | 289.7 | 155.5 | 131.9 | 116.3 |
| 1985 N | 151.4 | 121.3 | 160.1 | 195.8 | 123.2 | 141.8 | 144.2 | 143.5 | 180.5 | 148.0 | 279.6 | 182.5 | 294.4 | 156.2 | 132.3 | 115.1 |
| 1985 D | 151.7 | 121.4 | 160.3 | 196.9 | 122.9 | 141.8 | 144.5 | 143.7 | : | 147.9 | 288.8 | 183.2 | 299.4 | 156.6 | 132.6 | 115.2 |
| 1986 J | 152.1 | 121.6 | 160.4 | 197.9 | 122.4 | 142.0 | 144.2 | 144.0 | : | 147.5 | 295.6 | 188.4 | 305.1 | 157.4 | 133.1 | 115.4 |
| 1986 F | 152.1 | 121.3 | 160.0 | 198.7 | 122.6 | 142.1 | 143.6 | 144.5 | 183.3 | 147.4 | 293.5 | 189.3 | 309.2 | 157.6 | 132.7 | 114.9 |
| 1986 M | 152.4 | 121.0 | 160.4 | 199.6 | 122.7 | 141.9 | 142.9 | 144.7 | : | 148.0 | 302.8 | 190.1 | 312.7 | 157.9 | 132.1 | 114.6 |
| 1986 A | 153.0 | 120.9 | 161.0 | 200.0 | 123.2 | 142.4 | 142.7 | 146.1 | : | 151.8 | 307.3 | 190.5 | 316.8 | 158.5 | 131.8 | 115.0 |
| 1986 M | 153.3 | 120.9 | 161.4 | 201.0 | 123.2 | 142.0 | 142.7 | 146.4 | 185.5 | 152.9 | 309.0 | 191.0 | 315.3 | 158.8 | 132.2 | 115.8 |
| 1986 J | 153.6 | 121.1 | 161.9 | 201.8 | 122.7 | 142.2 | 142.6 | 146.3 | : | 152.7 | 314.3 | 192.7 | 316.3 | 159.3 | 132.9 | 115.2 |
| 1986 J | 153.2 | 120.5 | 162.1 | 201.8 | 121.7 | 142.2 | 142.3 | 145.9 | : | 151.7 | 312.6 | 194.7 | 316.2 | 159.1 | 132.9 | 114.9 |
| 1986 A | 153.3 | 120.2 | 162.3 | 202.2P | 121.8 | 142.3 | 141.9 | 146.3 | 185.8 | 152.5 | 312.5 | 195.3 | 319.4 | 159.3 | : | 114.7E |
| | RATE OF INCREASE OVER ONE MONTH (IRELAND 3 MONTHS) | | | | | | | | (T/T-1) | TAUX DE CROISSANCE SUR UN MOIS (IRLANDE 3 MOIS) | | | | | | |
| 85 A/J | 0.0 | -0.3 | 0.1 | 0.3 | 0.0 | 0.0 | -0.4 | 0.3 | 1.5 | -0.1 | 0.3 | 0.2 | 0.8 | 0.1 | 0.2 | -1.0 |
| 85 S/A | 0.3 | 0.2 | 0.1 | 0.5 | 0.5 | 0.2 | 0.0 | -0.1 | : | 0.5 | 5.0 | 1.1 | 0.1 | 0.4 | 0.3 | 1.0 |
| 85 O/S | 0.4 | 0.2 | 0.3 | 1.0 | 0.3 | -0.1 | 0.8 | 0.2 | : | 0.3 | 3.3 | 0.4 | 1.0 | 0.4 | 0.3 | 1.4 |
| 85 N/O | 0.4 | 0.2 | 0.2 | 0.8 | 0.0 | 0.2 | 0.2 | 0.3 | 0.2 | 0.4 | 2.5 | 0.8 | 1.6 | 0.4 | 0.3 | -1.0 |
| 85 D/N | 0.2 | 0.1 | 0.1 | 0.6 | -0.2 | 0.0 | 0.2 | 0.1 | : | -0.1 | 3.3 | 0.4 | 1.7 | 0.3 | 0.2 | 0.1 |
| 86J/85D | 0.2 | 0.2 | 0.1 | 0.5 | -0.4 | 0.1 | -0.2 | 0.2 | : | -0.3 | 2.3 | 2.8 | 1.9 | 0.5 | 0.3 | 0.2 |
| 86 F/J | 0.0 | -0.2 | -0.2 | 0.4 | 0.2 | 0.1 | -0.4 | 0.4 | 1.6 | -0.1 | -0.7 | 0.5 | 1.3 | 0.1 | -0.3 | -0.4 |
| 86 M/F | 0.2 | -0.2 | 0.2 | 0.5 | 0.1 | -0.2 | -0.5 | 0.1 | : | 0.4 | 3.2 | 0.4 | 1.2 | 0.2 | -0.5 | -0.3 |
| 86 A/M | 0.4 | -0.1 | 0.4 | 0.2 | 0.4 | 0.3 | -0.1 | 1.0 | : | 2.6 | 1.5 | 0.2 | 1.3 | 0.4 | -0.2 | 0.3 |
| 86 M/A | 0.2 | 0.0 | 0.2 | 0.5 | 0.0 | -0.2 | 0.0 | 0.2 | 1.2 | 0.7 | 0.5 | 0.2 | -0.5 | 0.2 | 0.3 | 0.7 |
| 86 J/M | 0.2 | 0.2 | 0.3 | 0.4 | -0.4 | 0.1 | -0.1 | -0.1 | : | -0.1 | 1.7 | 0.9 | 0.3 | 0.3 | 0.5 | -0.5 |
| 86 J/J | -0.2 | -0.5 | 0.1 | 0.0 | -0.8 | 0.0 | -0.2 | -0.3 | : | -0.7 | -0.5 | 1.0 | 0.0 | -0.1 | 0.0 | -0.3 |
| 86 A/J | 0.1 | -0.2 | 0.1 | 0.2P | 0.1 | 0.1 | -0.3 | 0.3 | 0.2 | 0.5 | 0.0 | 0.3 | 1.0 | 0.1 | : | -0.2E |
| | RATE OF INCREASE OVER 12 MONTHS | | | | | | | | (T/T-12) | TAUX DE CROISSANCE SUR 12 MOIS | | | | | | |
| 85/84 A | 5.5 | 2.1 | 5.6 | 9.1 | 2.3 | 4.7 | 4.0 | 6.2 | 5.4 | 4.1 | 17.8 | 7.3 | 16.0 | 5.8 | 3.4 | 2.3 |
| 85/84 S | 5.4 | 2.2 | 5.3 | 8.8 | 2.3 | 4.6 | 3.9 | 5.9 | : | 3.9 | 20.1 | 8.3 | 15.8 | 5.8 | 3.2 | 1.7 |
| 85/84 O | 5.1 | 1.8 | 4.9 | 8.9 | 1.9 | 4.0 | 4.0 | 5.4 | : | 3.7 | 21.1 | 8.1 | 16.0 | 5.5 | 3.2 | 2.3 |
| 85/84 N | 5.1 | 1.8 | 4.8 | 8.9 | 1.8 | 4.2 | 4.0 | 5.5 | 4.9 | 3.4 | 22.7 | 8.4 | 16.0 | 5.5 | 3.6 | 1.9 |
| 85/84 D | 5.1 | 1.8 | 4.7 | 8.8 | 1.7 | 4.0 | 4.1 | 5.7 | : | 3.6 | 25.0 | 8.1 | 16.8 | 5.6 | 3.8 | 1.8 |
| 86/85 J | 4.7 | 1.3 | 4.2 | 8.2 | 1.5 | 3.5 | 3.6 | 5.5 | : | 2.8 | 25.0 | 9.2 | 14.2 | 5.3 | 3.9 | 1.4 |
| 86/85 F | 4.0 | 0.7 | 3.4 | 7.3 | 1.3 | 2.5 | 2.6 | 5.1 | 4.6 | 2.1 | 24.4 | 9.0 | 12.6 | 4.6 | 3.2 | 1.8 |
| 86/85 M | 3.4 | 0.1 | 3.0 | 7.0 | 0.7 | 1.5 | 1.5 | 4.2 | : | 1.7 | 24.8 | 8.7 | 12.2 | 4.1 | 2.3 | 1.1 |
| 86/85 A | 3.0 | -0.2 | 2.6 | 6.4 | 0.7 | 1.4 | 0.5 | 3.0 | : | 4.0 | 24.7 | 7.8 | 12.3 | 3.6 | 1.6 | 0.9 |
| 86/85 M | 2.8 | -0.2 | 2.3 | 6.1 | 0.5 | 1.1 | 0.4 | 2.8 | 4.4 | 4.0 | 24.5 | 7.7 | 11.5 | 3.4 | 1.6 | 1.1 |
| 86/85 J | 2.7 | -0.2 | 2.3 | 6.0 | 0.2 | 1.2 | 0.1 | 2.5 | : | 3.9 | 24.4 | 8.9 | 11.7 | 3.4 | 1.7 | 0.5 |
| 86/85 J | 2.4 | -0.5 | 2.0 | 5.8 | -0.4 | 0.7 | -0.6 | 2.4 | : | 3.6 | 24.6 | 9.3 | 11.2 | 3.2 | 1.6 | 0.2 |
| 86/85 A | 2.4 | -0.4 | 2.0 | 5.7P | -0.3 | 0.8 | -0.5 | 2.4 | 3.1 | 4.3 | 24.2 | 9.5 | 11.5 | 3.3 | : | 1.0E |

VERBRAUCHERPREISE
GESAMTINDEX

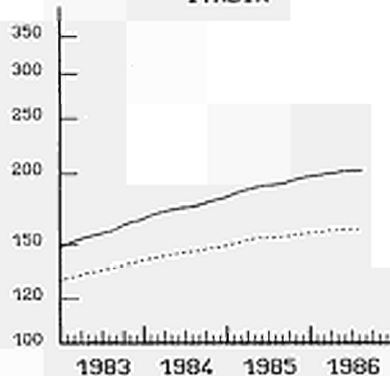
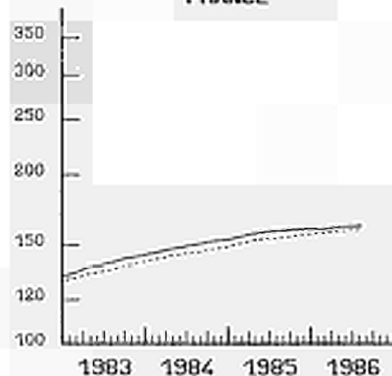
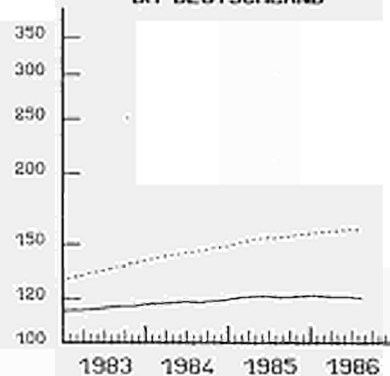
CONSUMER PRICES
GENERAL INDEX
1980 = 100

PRIX A LA CONSOMMATION
INDICE GENERAL

BR DEUTSCHLAND

FRANCE

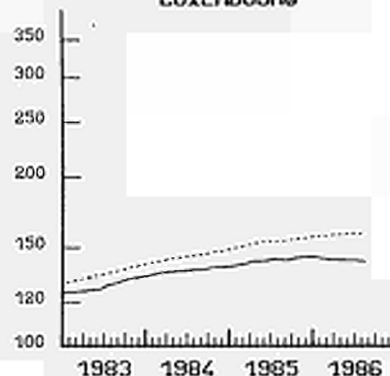
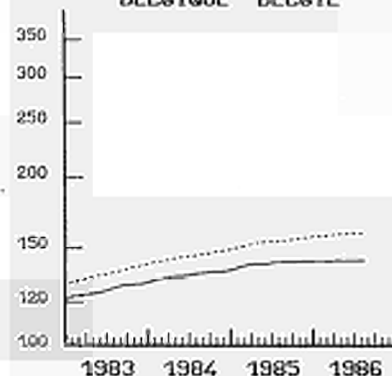
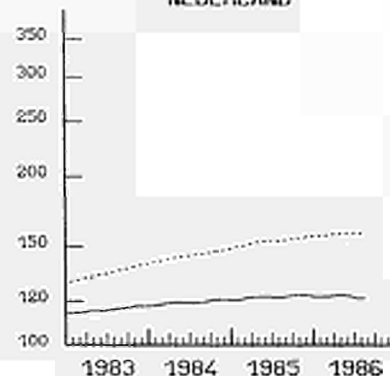
ITALIA



NEDERLAND

BELGIQUE BELGIE

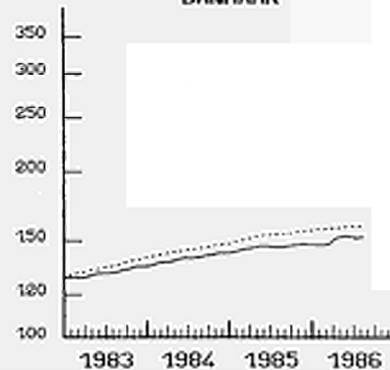
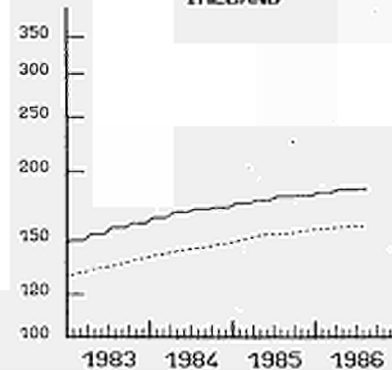
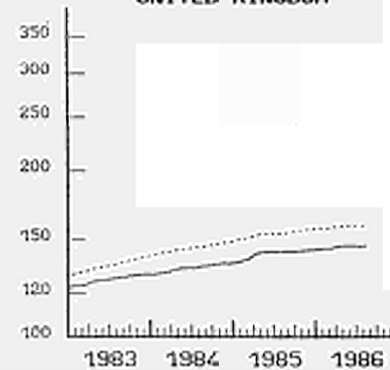
LUXEMBOURG



UNITED KINGDOM

IRELAND

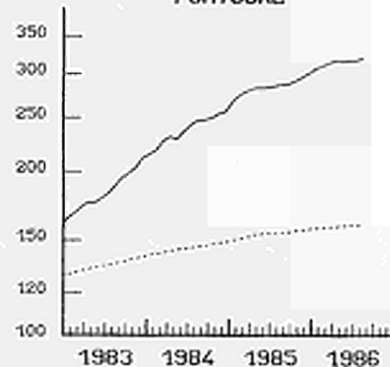
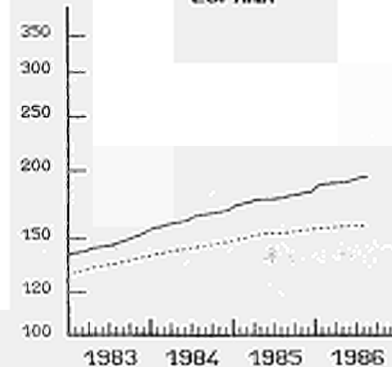
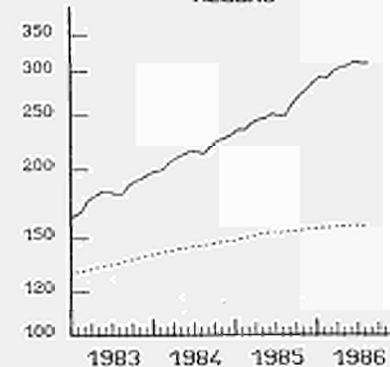
DANMARK



HELLAS

ESPANA

PORTUGAL



EINFACH-LOGARITHMISCHE SKALA

..... EUR 12
SEMI-LOGARITHMIC SCALE

ECHELLE SEMI-LOGARITHMIQUE

CONSUMER PRICES

B

PRIX A LA CONSOMMATION

GENERAL INDEX

INDICE GENERAL

| | SWITZERLAND SUISSE SCHWEIZ | AUSTRIA AUTRICHE OESTERREICH | NORWAY NORVEGE NORGE | SWEDEN SUEDE SVERIGE | FINLAND FINLANDE SUOMI | CANADA CANADA CANADA |
|----------|----------------------------------|------------------------------------|----------------------------|----------------------------|--------------------------------|----------------------------|
| | PRICE INDICES | | | 1980 = 100 | INDICES DE PRIX | |
| 1981 O | 106.5 | 106.8 | 113.6 | 112.1 | 111.9 | 112.5 |
| 1982 O | 112.5 | 112.6 | 126.5 | 121.7 | 122.6 | 124.6 |
| 1983 O | 115.8 | 116.3 | 137.2 | 132.5 | 132.8 | 131.8 |
| 1984 O | 119.2 | 122.9 | 145.7 | 143.2 | 142.2 | 137.6 |
| 1985 O | 123.3 | 126.9 | 154.0 | 153.7 | 150.5 | 143.1 |
| 1985 A | 122.9 | 127.1 | 154.4 | 153.8 | 151.7 | 143.8 |
| 1985 S | 123.3 | 127.2 | 155.9 | 154.5 | 151.9 | 143.9 |
| 1985 O | 123.7 | 127.2 | 156.3 | 155.5 | 152.1 | 144.4 |
| 1985 N | 124.5 | 127.5 | 156.8 | 156.5 | 152.2 | 145.0 |
| 1985 D | 124.6 | 127.8 | 157.3 | 157.1 | 152.3 | 145.7 |
| 1986 J | 124.5 | 129.0 | 158.9 | 158.9 | 153.4 | 146.3 |
| 1986 F | 124.5 | 129.1 | 159.5 | 159.0 | 154.2 | 146.9 |
| 1986 M | 124.7 | 128.9 | 160.5 | 158.7 | 154.5 | 147.2 |
| 1986 A | 124.6 | 128.6 | 161.6 | 159.7 | 155.1 | 147.5 |
| 1986 M | 124.2 | 128.5 | 161.8 | 159.7 | 155.6 | 148.1 |
| 1986 J | 124.2 | 128.9 | 164.6 | 159.7 | 156.4 | 148.4 |
| 1986 J | 123.6 | 129.0 | 166.3 | 160.1 | 156.5 | 149.5 |
| 1986 A | 123.8 | 129.4 | 166.9 | 159.9 | 156.8 | 149.9 |
| | RATE OF INCREASE OVER ONE MONTH | | | (T/T-1) | TAUX DE CROISSANCE SUR UN MOIS | |
| 85 A/J | 0.0 | 0.1 | -0.3 | 0.0 | 0.2 | 0.2 |
| 85 S/A | 0.3 | 0.1 | 1.0 | 0.5 | 0.1 | 0.1 |
| 85 O/S | 0.3 | 0.0 | 0.2 | 0.6 | 0.1 | 0.4 |
| 85 N/O | 0.7 | 0.2 | 0.3 | 0.6 | 0.1 | 0.4 |
| 85 D/N | 0.1 | 0.3 | 0.3 | 0.4 | 0.1 | 0.5 |
| 86 J/85D | -0.1 | 0.9 | 1.0 | 1.1 | 0.7 | 0.5 |
| 86 F/J | 0.0 | 0.1 | 0.4 | 0.1 | 0.5 | 0.4 |
| 86 M/F | 0.1 | -0.2 | 0.6 | -0.2 | 0.2 | 0.2 |
| 86 A/M | -0.1 | -0.2 | 0.7 | 0.6 | 0.4 | 0.2 |
| 86 M/A | -0.3 | -0.1 | 0.1 | 0.0 | 0.3 | 0.5 |
| 86 J/M | 0.0 | 0.3 | 1.7 | 0.0 | 0.5 | 0.2 |
| 86 J/J | -0.5 | 0.1 | 1.0 | 0.3 | 0.1 | 0.8 |
| 86 A/J | 0.2 | 0.3 | 0.4 | -0.1 | 0.2 | 0.3 |
| | RATE OF INCREASE OVER 12 MONTHS | | | (T/T-12) | TAUX DE CROISSANCE SUR 12 MOIS | |
| 85/84 A | 2.9 | 2.6 | 5.6 | 6.9 | 5.8 | 4.0 |
| 85/84 S | 3.3 | 2.9 | 5.8 | 6.7 | 5.3 | 4.0 |
| 85/84 O | 3.0 | 2.7 | 5.6 | 6.9 | 4.9 | 4.2 |
| 85/84 N | 3.1 | 2.6 | 5.7 | 6.9 | 4.9 | 4.0 |
| 85/84 D | 3.3 | 2.8 | 5.6 | 5.6 | 4.9 | 4.4 |
| 86/85 J | 2.2 | 2.9 | 6.0 | 6.2 | 4.5 | 4.4 |
| 86/85 F | 1.3 | 2.5 | 6.1 | 5.3 | 4.6 | 4.1 |
| 86/85 M | 1.0 | 1.8 | 5.5 | 4.3 | 3.8 | 4.1 |
| 86/85 A | 1.0 | 1.4 | 5.8 | 4.6 | 3.7 | 3.9 |
| 86/85 M | 0.7 | 1.5 | 5.6 | 3.4 | 3.0 | 4.1 |
| 86/85 J | 0.8 | 1.5 | 6.7 | 3.8 | 3.3 | 3.7 |
| 86/85 J | 0.5 | 1.5 | 7.4 | 4.1 | 3.4 | 4.2 |
| 86/85 A | 0.7 | 1.7 | 8.1 | 4.0 | 3.4 | 4.3 |

Venta y suscripciones · Salg og abonnement · Verkauf und Abonnement · Πωλήσεις και συνδρομές
Sales and subscriptions · Vente et abonnements · Vendita e abbonamenti
Verkoop en abonnementen · Venda e assinaturas

BELGIOUE/BELGIË

Moniteur belge/Belgisch Staatsblad
Rue de Louvain 40-42/Leuvensestraat 40-42
1000 Bruxelles/1000 Brussel
Tél. 512 00 26
CCP/Postrekening 000-2005502-27

Sous-dépôts/Agentschappen:

**Librairie européenne/
Europese Boekhandel**

Rue de la Loi 244/Wetstraat 244
1040 Bruxelles/1040 Brussel

CREDOC

Rue de la Montagne 34/Bergstraat 34
Bte 11/Bus 11
1000 Bruxelles/1000 Brussel

DANMARK

Schultz EF-publikationer

Møntergade 19
1116 København K
Tlf: (01) 14 11 95
Girokonto 200 11 95

BR DEUTSCHLAND

Bundesanzeiger Verlag

Breite Straße
Postfach 10 80 06
5000 Köln 1
Tel. (02 21) 20 29-0
Fernschreiber:
ANZEIGER BONN 8 882 595
Telecopierer:
20 29 278

GREECE

G.C. Eleftheroudakis SA

International Bookstore
4 Nikis Street
105 63 Athens
Tel. 322 22 55
Telex 219410 ELEF

Sub-agent for Northern Greece:

Molho's Bookstore

The Business Bookshop
10 Tsimiski Street
Thessaloniki
Tel. 275 271
Telex 412885 LIMO

ESPAÑA

Boletín Oficial del Estado

Trafalgar 27
E-28010 Madrid
Tel. (91) 446 60 00

Mundi-Prensa Libros, S.A.

Castelló 37
E-28001 Madrid
Tel. (91) 431 33 99 (Libros)
431 32 22 (Suscripciones)
435 36 37 (Dirección)
Télex 49370-MPLI-E

FRANCE

**Service de vente en France des publications
des Communautés européennes**

Journal officiel
26, rue Desaix
75732 Paris Cedex 15
Tél. (1) 45 78 61 39

IRELAND

Government Publications Sales Office

Sun Alliance House
Molesworth Street
Dublin 2
Tel. 71 03 09

or by post

Stationery Office

St Martin's House
Waterloo Road
Dublin 4
Tel. 68 90 66

ITALIA

Licosa Spa

Via Lamarmora, 45
Casella postale 552
50 121 Firenze
Tel. 57 97 51
Telex 570466 LICOSA I
CCP 343 509

Subagenti:

Libreria scientifica Lucio de Biasio - AEIOU

Via Meravigli, 16
20 123 Milano
Tel. 80 76 79

Libreria Tassi

Via A. Farnese, 28
00 192 Roma
Tel. 31 05 90

Libreria giuridica

Via 12 Ottobre, 172/R
16 121 Genova
Tel. 59 56 93

GRAND-DUCHÉ DE LUXEMBOURG

**Office des publications officielles
des Communautés européennes**

2, rue Mercier
L-2985 Luxembourg
Tél. 49 92 81
Télex PUBOF LU 1324 b
CCP 19190-81
CC bancaire BIL 8-109/6003/200

Messageries Paul Kraus

11, rue Christophe Plantin
L-2339 Luxembourg
Tél. 48 21 31
Télex 2515
CCP 49242-63

NEDERLAND

Staatsdrukkerij- en uitgeverijbedrijf

Christoffel Plantijnstraat
Postbus 20014
2500 EA 's-Gravenhage
Tel. (070) 78 99 11

PORTUGAL

Imprensa Nacional

Av. Francisco Manuel de Melo, 5
P-1000 Lisboa
Tel. 65 39 96

Distribuidora Livros Bertrand Lda.

Grupo Bertrand, SARL

Rua das Terras dos Vales, 4-A
Apart. 37
P-2700 Amadora CODEX
Tel. 493 90 50 - 494 87 88
Telex 15798 BERDIS

UNITED KINGDOM

HM Stationery Office

HMSO Publications Centre
51 Nine Elms Lane
London SW8 5DR
Tel. (01) 211 56 56

Sub-agent:

Alan Armstrong & Associates Ltd

72 Park Road
London NW1 4SH
Tel. (01) 723 39 02
Telex 297635 AAALTD G

SCHWEIZ/SUISSE/SVIZZERA

Librairie Payot

6, rue Grenus
1211 Genève
Tél. 31 89 50
CCP 12-236

UNITED STATES OF AMERICA

**European Community Information
Service**

2100 M Street, NW
Suite 707
Washington, DC 20037
Tel. (202) 862 9500

CANADA

Renouf Publishing Co., Ltd

61 Sparks Street
Ottawa
Ontario K1P 5R1
Tel. Toll Free 1 (800) 267 4164
Ottawa Region (613) 238 8985-6
Telex 053-4936

JAPAN

Kinokuniya Company Ltd

17-7 Shinjuku 3-Chome
Shiniuku-ku
Tokyo 160-91
Tel. (03) 354 0131

Journal Department

PO Box 55 Chitose
Tokyo 156
Tel. (03) 439 0124

Price (excluding VAT) in Luxembourg • Prix publics au Luxembourg (TVA exclue)

| | ECU | BFR | FF | IRL | UKL | USD |
|-------------------------------|-------|-------|-----|-------|------|-----|
| Single copy • Prix par numéro | 2,23 | 100 | 16 | 1,60 | 1,40 | 2 |
| Subscription • Abonnement | 28,96 | 1 300 | 195 | 20,75 | 17 | 24 |



KONTORET FOR DE EUROPÆISKE FÆLLESSKABERS OFFICIELLE PUBLIKATIONER
AMT FÜR AMTLICHE VERÖFFENTLICHUNGEN DER EUROPÄISCHEN GEMEINSCHAFTEN
ΥΠΗΡΕΣΙΑ ΕΠΙΣΗΜΩΝ ΕΚΔΟΣΕΩΝ ΤΩΝ ΕΥΡΩΠΑΪΚΩΝ ΚΟΙΝΟΤΗΤΩΝ
OFFICE FOR OFFICIAL PUBLICATIONS OF THE EUROPEAN COMMUNITIES
OFICINA DE LAS PUBLICACIONES OFICIALES DE LAS COMUNIDADES EUROPEAS
OFFICE DES PUBLICATIONS OFFICIELLES DES COMMUNAUTÉS EUROPÉENNES
UFFICIO DELLE PUBBLICAZIONI UFFICIALI DELLE COMUNITÀ EUROPEE
BUREAU VOOR OFFICIËLE PUBLIKATIES DER EUROPESE GEMEENSCHAPPEN
SERVIÇO DAS PUBLICAÇÕES OFICIAIS DAS COMUNIDADES EUROPEIAS

ISSN 0258-0861