

# Consumer price index

## Indice des prix à la consommation

3  1986 Monthly  Mensuel

**PRICES** : A further slow-down in the Community consumer price index in March 1986 (+0.2%)

The Community (EUR 12) consumer price index (CPI) rose by 0.2% between February and March 1986.

This moderate rise reflects satisfactory trends in most of the Member States with the exception of France (where, after a fall of 0.2% in the previous month, the index rose by 0.3%), Denmark (where the index moved upwards by 0.4% after a fall of 0.1% in February) and Greece (where, after falling in February (-0.7%), prices increased again by 3.2% in March).

Other significant results are a further 0.2% fall in the index in the Federal Republic of Germany (in line with the trend for the previous month) and a marked fall in the index in Luxembourg (-1.0%).

The year-on-year rise in the CPI for EUR 12 between March 1985 and March 1986 was 4.2%, compared with 4.7% in February, 5.3% in January and 5.6% in December 1985. Thus, each month the slow-down of the Community CPI has become more marked.

The year-on-year rates for the Member States and some third countries for the twelve-month period March 1985-march 1986 were as follows (the corresponding figures at March 1985 are given in brackets):

Federal Republic of Germany	+0.1% (+2.5%)	United Kingdom	+4.2% (+6.1%)
Netherlands	+0.7% (+2.5%)	Ireland	+4.6%*(+6.2%)
Belgium	+1.5% (+5.7%)	Italy	+7.2% (+9.4%)
Luxembourg	+1.5% (+3.9%)	Spain	+8.9% (+9.5%)
Denmark	+1.7% (+5.7%)	Portugal	+12.2% (+23.1%)
France	+3.0% (+6.4%)	Greece	+24.8% (+18.1%)
United States	+3.2%* (+3.5%)		
Japan	+2.0%* (+1.4%)		

\* Between February 1985 and February 1986

The CPI for EUR 10 rose by 0.1% between February and March 1986, giving a year-on-year increase of 3.4%.



DE EUROPÆISKE FÆLLESSKABERS STATISTISKE KONTOR  
STATISTISCHES AMT DER EUROPÄISCHEN GEMEINSCHAFTEN  
ΣΤΑΤΙΣΤΙΚΗ ΥΠΗΡΕΣΙΑ ΤΩΝ ΕΥΡΩΠΑΪΚΩΝ ΚΟΙΝΟΤΗΤΩΝ  
STATISTICAL OFFICE OF THE EUROPEAN COMMUNITIES  
OFICINA ESTADÍSTICA DE LAS COMUNIDADES EUROPEAS  
OFFICE STATISTIQUE DES COMMUNAUTÉS EUROPÉENNES  
ISTITUTO STATISTICO DELLE COMUNITÀ EUROPEE  
BUREAU VOOR DE STATISTIEK DER EUROPESE GEMEENSCHAPPEN  
SERVIÇO DE ESTATÍSTICA DAS COMUNIDADES EUROPEIAS

L-2920 Luxembourg — Tél. 43011 — Téléx : Comeur Lu 3423  
B-1049 Bruxelles, Bâtiment Berlaymont, Rue de la Loi 200 (Bureau de liaison) — Tél. 235 11 11

The information included in this bulletin has been taken from the Cronos data bank, which is accessible via the different host companies. For all information about these host companies contact Eurostat in Luxembourg, tel. 4301-3220. To obtain specifications of the principal characteristics of the series contained in this bulletin contact Luxembourg, tel.

**4301-3202 or 4301-3511**

Les informations reprises dans ce bulletin sont extraites de la banque de données Cronos, qui est accessible via différents serveurs. Pour toute information concernant ces serveurs s'adresser à l'Eurostat, Luxembourg, tél. 4301-3220. Pour obtenir des précisions sur les caractéristiques principales des séries contenues dans ce bulletin s'adresser à Luxembourg, tél. **4301-3202 ou 4301-3511**

Luxembourg : Office des publications officielles des Communautés européennes, 1986

Reproduction is authorized, except by commercial data-base networks, subject to acknowledgement of the source.  
For conditions relating to reproduction by data-base services, application should be made to Eurostat, L-2920 Luxembourg.

La reproduction, autorisée sauf sur réseau informatique commercial, est subordonnée à l'indication de la source.  
Toute demande concernant les conditions de reproduction sur réseau informatique devra être envoyée à l'Eurostat, L-2920 Luxembourg.

VERBRAUCHERPREISE

GESAMTINDEX

— USA

CONSUMER PRICES

GENERAL INDEX

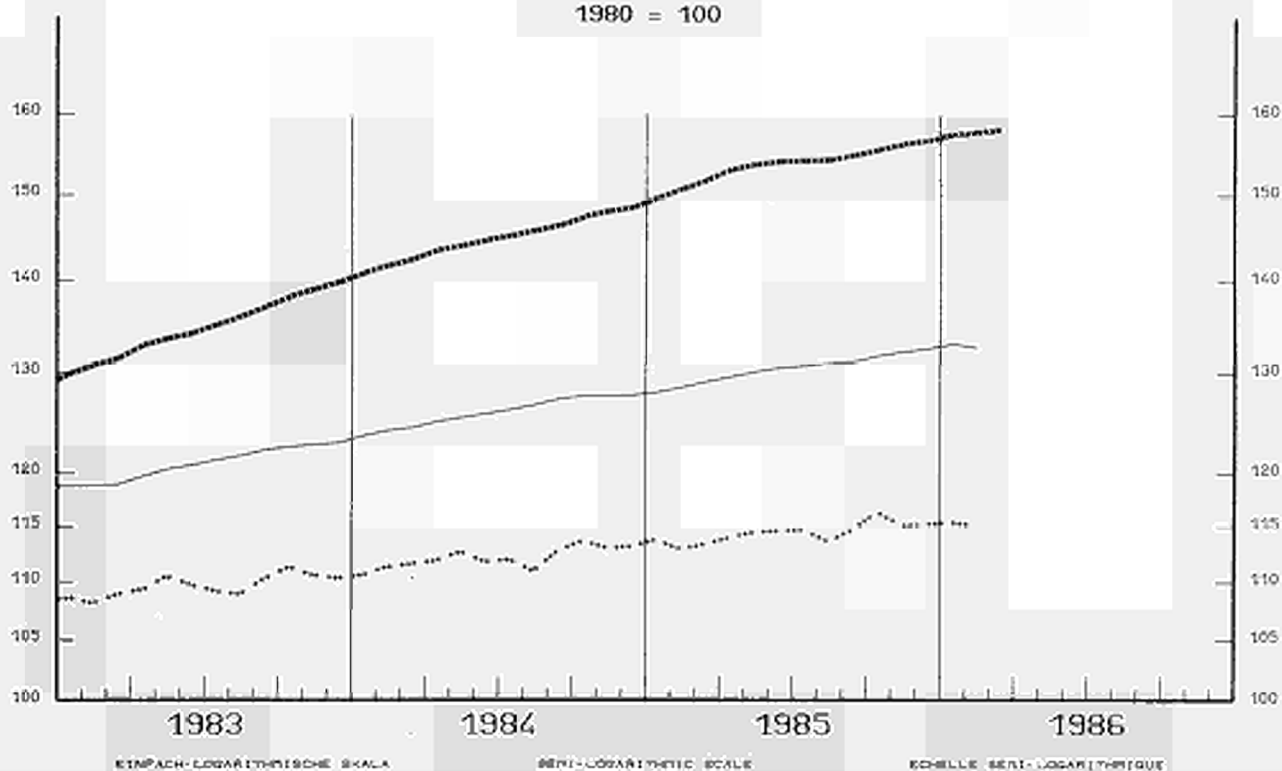
— EUR 12

PRIX A LA CONSOMMATION

INDICE GENERAL

— JAPAN

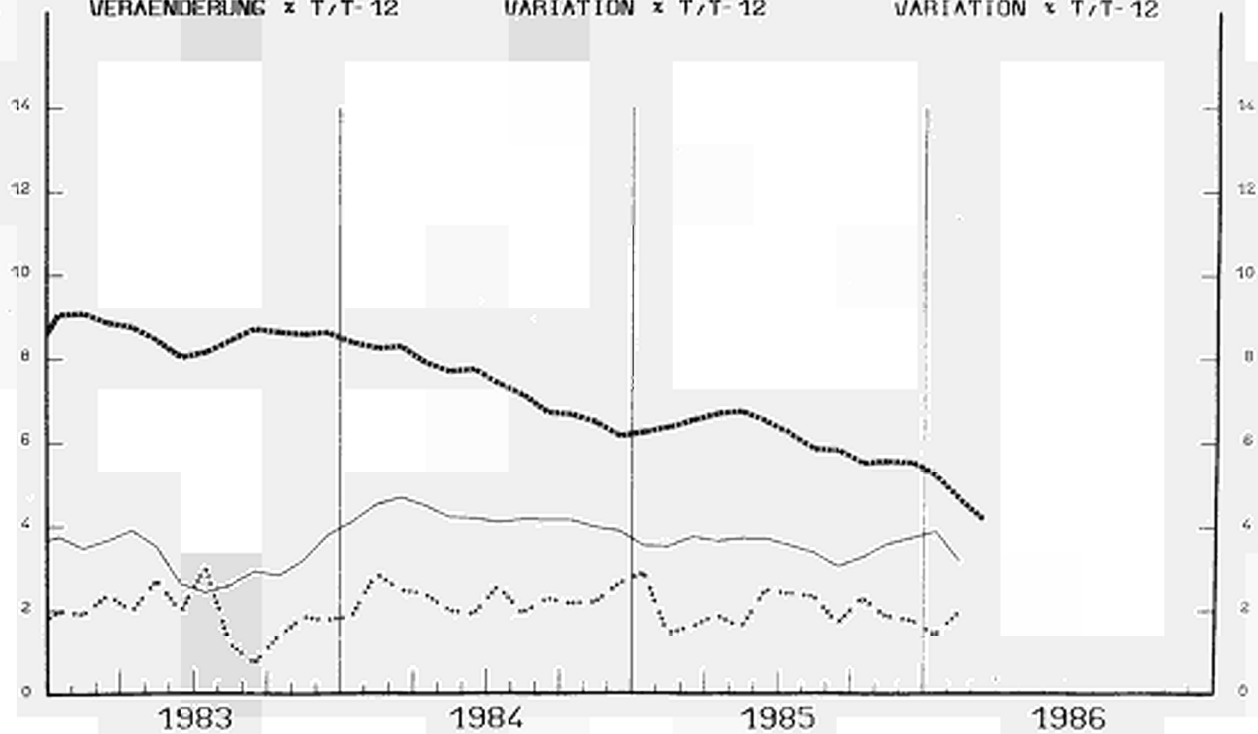
1980 = 100



VERÄNDERUNG × T/T-12

VARIATION × T/T-12

VARIATION × T/T-12



## CONSUMER PRICES

A

## PRIX A LA CONSOMMATION

## GENERAL INDEX

## INDICE GENERAL

	EUR 10	BR DEUTSCH LAND	FRANCE	ITALIA	NEDER= LAND	BELGIQUE BELGIE	LUXEM= BOURG	UNITED KINGDOM	IRELAND	DANMARK	ELLAS	ESPANA	PORTUGAL	EUR 12	USA	JAPAN
	PRICE INDICES								1980 = 100		INDICES DE PRIX					
1981 O	111.7	106.3	113.4	117.8	106.7	107.6	108.1	111.9	120.4	111.7	124.5	114.6	120.0	112.1	110.3	104.9
1982 O	123.0	111.9	126.8	137.2	112.8	117.0	118.2	121.5	141.1	123.0	150.5	131.1	147.3	124.2	117.1	107.7
1983 O	132.7	115.6	139.0	157.3	115.9	126.0	128.4	127.1	155.8	131.5	181.4	147.0	184.3	134.8	120.9	109.7
1984 O	141.2	118.4	149.3	174.3	119.6	134.0	135.7	133.4	169.2	139.8	214.6	163.6	237.5	144.8	126.1	112.1
1985 O	149.1	121.0	158.0	190.3	122.3	140.5	141.3	141.5	178.4	146.4	256.3	178.0	284.1	153.7	130.5	114.4
1985 M	147.3	120.9	155.8	186.6	121.9	139.8	140.7	138.8	:	145.5	242.7	174.9	278.6	151.7	129.2	113.4
1985 A	148.5	121.1	156.9	188.0	122.4	140.3	142.0	141.8	:	146.0	246.5	176.8	282.1	153.0	129.7	114.0
1985 M	149.1	121.2	157.7	189.4	122.5	140.5	142.1	142.4	177.6	147.0	248.2	177.3	282.9	153.6	130.2	114.5
1985 J	149.5	121.3	158.3	190.4	122.4	140.5	142.4	142.7	:	147.0	252.7	177.0	283.2	154.0	130.6	114.6
1985 J	149.6	121.1	158.9	190.8	122.2	141.3	143.2	142.5	:	146.4	250.9	178.0	284.2	154.1	130.8	114.7
1985 A	149.7	120.7	159.1	191.3	122.2	141.3	142.7	142.9	180.2	146.2	251.6	178.3	286.5	154.2	131.1	113.6
1985 S	150.2	120.9	159.3	192.3	122.8	141.5	142.7	142.8	:	147.0	264.1	180.3	286.7	154.8	131.5	114.7
1985 O	150.8	121.1	159.8	194.3	123.2	141.4	143.9	143.0	:	147.4	272.9	181.0	289.7	155.5	131.9	116.3
1985 N	151.4	121.3	160.1	195.8	123.2	141.8	144.2	143.5	180.5	148.0	279.6	182.5	294.4	156.2	132.3	115.1
1985 D	151.7	121.4	160.3	196.9	122.9	141.8	144.5	143.7	:	147.9	288.8	183.2	299.4	156.6	132.6	115.2
1986 J	152.1	121.6	160.4	197.9	122.4	142.0	144.2	144.0	:	147.5	295.6	188.4	305.1	157.4	133.0	115.4
1986 F	152.2	121.3	160.0	199.3	122.6	142.1	144.3	144.5	183.3	147.4	293.5	189.3	309.2	157.6	132.7	115.1
1986 M	152.5P	121.0	160.5	200.1E	122.7	141.9	142.9	144.7	:	148.0E	302.8	190.1	312.7	158.0P	:	:
	RATE OF INCREASE OVER ONE MONTH (IRELAND 3 MONTHS)								(T/T-1)		TAUX DE CROISSANCE SUR UN MOIS (IRLANDE 3 MOIS)					
85 M/F	0.7	0.3	0.7	0.8	0.7	0.8	0.5	0.9	:	0.8	2.9	0.7	1.5	0.7	0.4	0.4
85 A/M	0.8	0.2	0.7	0.8	0.4	0.4	0.9	2.1	:	0.3	1.6	1.1	1.2	0.9	0.4	0.5
85 M/A	0.4	0.1	0.5	0.7	0.1	0.1	0.1	0.5	1.3	0.7	0.7	0.3	0.3	0.4	0.4	0.4
85 J/M	0.3	0.1	0.4	0.5	-0.1	0.0	0.2	0.2	:	0.0	1.8	-0.2	0.1	0.2	0.3	0.1
85 J/J	0.1	-0.2	0.4	0.2	-0.2	0.5	0.5	-0.2	:	-0.4	-0.7	0.6	0.3	0.1	0.2	0.1
85 A/J	0.0	-0.3	0.1	0.3	0.0	0.0	-0.4	0.3	1.5	-0.1	0.3	0.2	0.8	0.1	0.2	-1.0
85 S/A	0.3	0.2	0.1	0.5	0.5	0.2	0.0	-0.1	:	0.5	5.0	1.1	0.1	0.4	0.3	1.0
85 O/S	0.4	0.2	0.3	1.0	0.3	-0.1	0.8	0.2	:	0.3	3.3	0.4	1.0	0.4	0.3	1.4
85 N/O	0.4	0.2	0.2	0.8	0.0	0.2	0.2	0.3	0.2	0.4	2.5	0.8	1.6	0.4	0.3	-1.0
85 D/N	0.2	0.1	0.1	0.6	-0.2	0.0	0.2	0.1	:	-0.1	3.3	0.4	1.7	0.3	0.2	0.1
86J/85D	0.2	0.2	0.1	0.5	-0.4	0.1	-0.2	0.2	:	-0.3	2.3	2.8	1.9	0.5	0.3	0.2
86 F/J	0.1	-0.2	-0.2	0.7	0.2	0.1	0.1	0.4	1.6	-0.1	-0.7	0.5	1.3	0.1	-0.3	-0.3
86 M/F	0.2P	-0.2	0.3	0.4E	0.1	-0.2	-1.0	0.1	:	0.4E	3.2	0.4	1.2	0.2P	:	:
	RATE OF INCREASE OVER 12 MONTHS								(T/T-12)		TAUX DE CROISSANCE SUR 12 MOIS					
85/84 M	5.9	2.5	6.4	9.4	2.5	5.7	3.9	6.1	:	5.7	18.1	9.5	23.1	6.5	3.7	1.6
85/84 A	6.1	2.5	6.5	9.4	2.5	5.5	4.4	6.9	:	5.8	17.7	10.2	22.3	6.7	3.7	1.9
85/84 M	6.1	2.5	6.5	9.5	2.6	5.3	4.2	7.0	5.2	5.5	17.0	9.9	23.8	6.7	3.7	1.6
85/84 J	5.9	2.3	6.4	9.4	2.5	5.1	4.4	7.0	:	4.9	17.2	9.0	20.1	6.4	3.7	2.5
85/84 J	5.8	2.3	6.1	9.4	2.4	5.1	4.7	6.9	:	4.6	16.7	7.9	17.3	6.2	3.6	2.4
85/84 A	5.5	2.1	5.6	9.1	2.3	4.7	4.0	6.2	5.4	4.1	17.8	7.3	16.0	5.8	3.4	2.3
85/84 S	5.4	2.2	5.3	8.8	2.3	4.6	3.9	5.9	:	3.9	20.1	8.3	15.8	5.8	3.2	1.7
85/84 O	5.1	1.8	4.9	8.9	1.9	4.0	4.0	5.4	:	3.7	21.1	8.1	16.0	5.5	3.2	2.3
85/84 N	5.1	1.8	4.8	8.9	1.8	4.2	4.0	5.5	4.9	3.4	22.7	8.4	16.0	5.5	3.6	1.9
85/84 D	5.1	1.8	4.7	8.8	1.7	4.0	4.1	5.7	:	3.6	25.0	8.1	16.8	5.6	3.8	1.8
86/85 J	4.7	1.3	4.2	8.2	1.5	3.5	3.6	5.5	:	2.8	25.0	9.2	14.2	5.3	3.8	1.4
86/85 F	4.1	0.7	3.4	7.7	1.3	2.5	3.1	5.1	4.6	2.1	24.4	8.9	12.6	4.7	3.2	1.9
86/85 M	3.5P	0.1	3.0	7.2E	0.7	1.5	1.5	4.2	:	1.7E	24.8	8.7	12.2	4.1P	:	:

## CONSUMER PRICES

B

## PRIX A LA CONSOMMATION

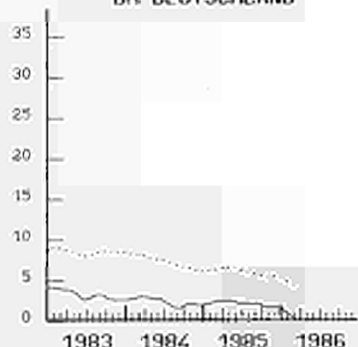
## GENERAL INDEX

## INDICE GENERAL

	SWITZERLAND SUISSE SCHWEIZ	AUSTRIA AUTRICHE OESTERREICH	NORWAY NORVEGE NORGE	SWEDEN SUEDE SVERIGE	FINLAND FINLANDE SUOMI	CANADA CANADA CANADA
	PRICE INDICES			1980 = 100	INDICES DE PRIX	
1981 O	106.5	106.8	113.6	112.1	111.9	112.5
1982 O	112.5	112.6	126.5	121.7	122.6	124.6
1983 O	115.8	116.3	137.2	132.5	132.8	131.8
1984 O	119.2	122.9	145.7	143.2	142.2	137.6
1985 O	123.3	126.9	154.0	153.7	150.5	143.1
1985 M	123.5	126.6	152.1	152.1	148.8	141.4
1985 A	123.4	126.9	152.8	152.7	149.6	142.0
1985 M	123.3	126.6	153.2	154.5	151.0	142.3
1985 J	123.2	127.0	154.3	153.9	151.4	143.1
1985 J	122.9	127.1	154.8	153.8	151.4	143.5
1985 A	122.9	127.1	154.4	153.8	151.7	143.8
1985 S	123.3	127.2	155.9	154.5	151.9	143.9
1985 O	123.7	127.2	156.3	155.5	152.1	144.4
1985 N	124.5	127.5	156.8	156.5	152.2	145.0
1985 D	124.6	127.8	157.3	157.1	152.3	145.7
1986 J	124.5	129.0	158.9	158.9	153.4	146.5
1986 F	124.5	129.1	159.5	159.0	154.2	146.9
1986 M	124.7	:	:	158.7	:	:
	RATE OF INCREASE OVER ONE MONTH			(T/T-1)	TAUX DE CROISSANCE SUR UN MOIS	
85 M/F	0.5	0.5	1.1	0.7	0.9	0.2
85 A/M	-0.1	0.2	0.4	0.4	0.5	0.4
85 M/A	-0.1	-0.3	0.3	1.2	0.9	0.2
85 J/M	-0.1	0.3	0.7	-0.4	0.3	0.6
85 J/J	-0.2	0.1	0.4	-0.1	0.0	0.3
85 A/J	0.0	0.1	-0.3	0.0	0.2	0.2
85 S/A	0.3	0.1	1.0	0.5	0.1	0.1
85 O/S	0.3	0.0	0.2	0.6	0.1	0.4
85 N/O	0.7	0.2	0.3	0.6	0.1	0.4
85 D/N	0.1	0.3	0.3	0.4	0.1	0.5
86J/85D	-0.1	0.9	1.0	1.2	0.7	0.5
86 F/J	0.0	0.1	0.4	0.1	0.5	0.3
86 M/F	0.1	:	:	-0.2	:	:
	RATE OF INCREASE OVER 12 MONTHS			(T/T-12)	TAUX DE CROISSANCE SUR 12 MOIS	
85/84 M	3.9	3.6	5.5	7.9	6.7	3.7
85/84 A	3.6	3.8	5.5	7.7	6.6	3.9
85/84 M	3.8	3.8	5.7	8.2	6.4	3.9
85/84 J	3.4	3.2	5.9	8.1	6.4	4.1
85/84 J	3.3	3.5	5.8	7.7	6.0	3.8
85/84 A	2.9	2.6	5.6	6.9	5.8	4.0
85/84 S	3.3	2.9	5.8	6.7	5.3	4.0
85/84 O	3.0	2.7	5.6	6.9	4.9	4.2
85/84 N	3.1	2.6	5.7	6.9	4.9	4.0
85/84 D	3.3	2.8	5.6	6.2	4.9	4.4
86/85 J	2.2	2.9	5.9	6.2	4.5	4.4
86/85 F	1.3	2.5	6.1	5.3	4.6	4.1
86/85 M	1.0	:	:	4.3	:	:

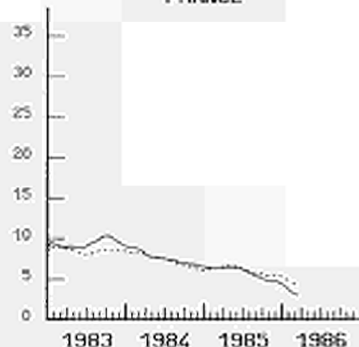
VERBRAUCHERPREISE  
GESAMTINDEX  
VARIATION % T/T-12

BR. DEUTSCHLAND



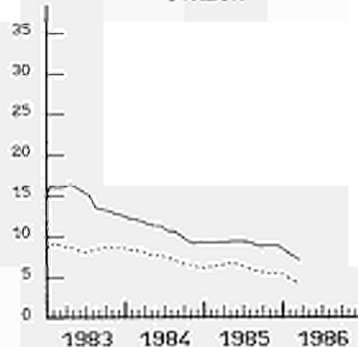
CONSUMER PRICES  
GENERAL INDEX  
VARIATION % T/T-12

FRANCE

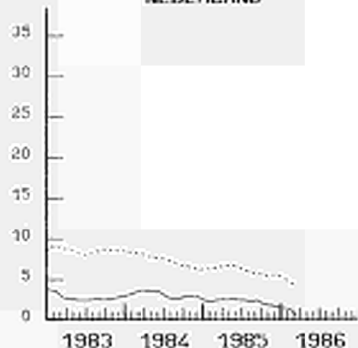


PRIX A LA CONSOMMATION  
INDICE GENERAL  
VARIATION % T/T-12

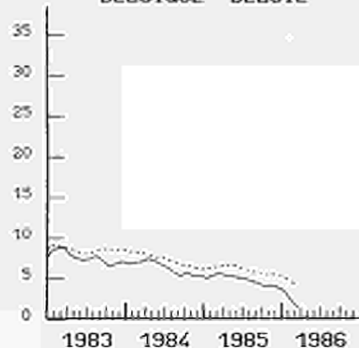
ITALIA



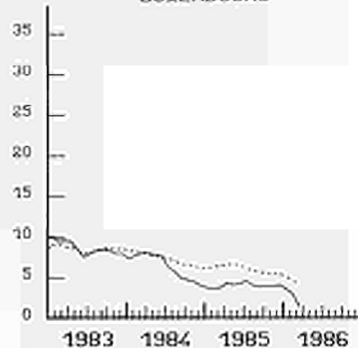
NEDERLAND



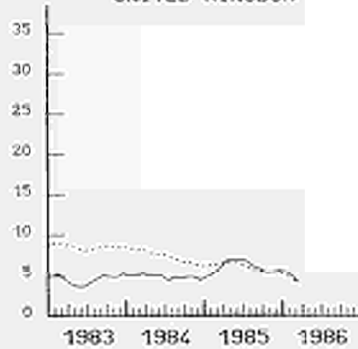
BELGIQUE BELGIE



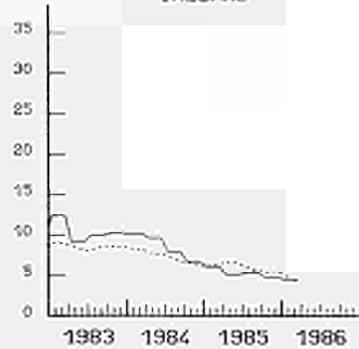
LUXEMBOURG



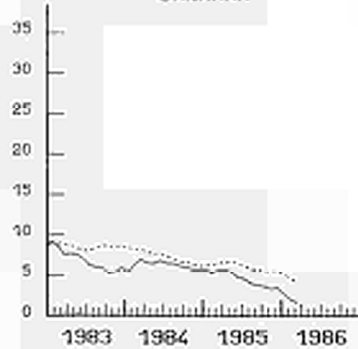
UNITED KINGDOM



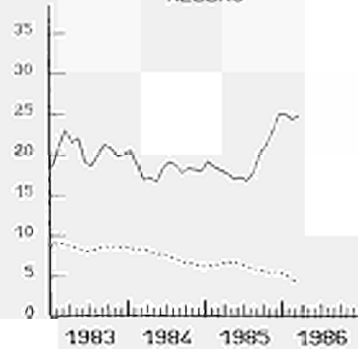
IRELAND



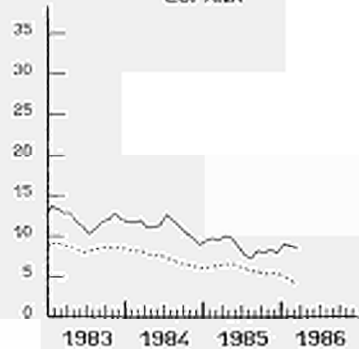
DANMARK



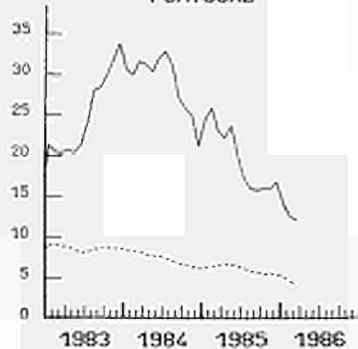
HELLAS



ESPANA



PORTUGAL



EUR 12

**Salg og abonnement · Verkauf und Abonnement · Πωλήσεις και συνδρομές · Sales and subscriptions  
Vente et abonnements · Vendita e abbonamenti · Verkoop en abonnementen**

---

**BELGIQUE / BELGIË**

---

**Moniteur belge / Belgisch Staatsblad**  
Rue de Louvain 40-42 / Leuvensestraat 40-42  
1000 Bruxelles / 1000 Brussel  
Tél. 512 00 26  
CCP/Postrekening 000-2005502-27

Sous-dépôts / Agentschappen:

**Librairie européenne /  
Europese Boekhandel**  
Rue de la Loi 244 / Wetstraat 244  
1040 Bruxelles / 1040 Brussel

**CREDOC**

Rue de la Montagne 34 / Bergstraat 34  
Bte 11 / Bus 11  
1000 Bruxelles / 1000 Brussel

---

**DANMARK**

---

**Schultz Forlag**

Møntergade 21  
1116 København K  
Tlf: (01) 12 11 95  
Girokonto 200 11 95

---

**BR DEUTSCHLAND**

---

**Verlag Bundesanzeiger**

Breite Straße  
Postfach 10 80 06  
5000 Köln 1  
Tel. (02 21) 20 29-0  
Fernschreiber:  
ANZEIGER BONN 8 882 595

---

**GREECE**

---

**G.C. Eleftheroudakis SA**

International Bookstore  
4 Nikis Street  
Athens (126)  
Tel. 322 63 23  
Telex 219410 ELEF

Sub-agent for Northern Greece:

**Molho's Bookstore**

The Business Bookshop  
10 Tsimiski Street  
Thessaloniki  
Tel. 275 271  
Telex 412885 LIMO

---

**FRANCE**

---

**Service de vente en France des publications  
des Communautés européennes**

**Journal officiel**  
26, rue Desaix  
75732 Paris Cedex 15  
Tél. (1) 578 61 39

---

**IRELAND**

---

**Government Publications Sales Office**

Sun Alliance House  
Molesworth Street  
Dublin 2  
Tel. 71 03 09

or by post

**Stationery Office**

St Martin's House  
Waterloo Road  
Dublin 4  
Tel. 68 90 66

---

**ITALIA**

---

**Licosa Spa**

Via Lamarmora, 45  
Casella postale 552  
50 121 Firenze  
Tel. 57 97 51  
Telex 570466 LICOSA I  
CCP 343 509

Subagente:

**Libreria scientifica Lucio de Biasio - AEIOU**

Via Meravigli, 16  
20 123 Milano  
Tel. 80 76 79

---

**GRAND-DUCHÉ DE LUXEMBOURG**

---

**Office des publications officielles  
des Communautés européennes**

5, rue du Commerce  
L-2985 Luxembourg  
Tél. 49 00 81 - 49 01 91  
Télex PUBOF - Lu 1322  
CCP 19190-81  
CC bancaire BIL 8-109/6003/200

**Messageries Paul Kraus**

11, rue Christophe Plantin  
L-2339 Luxembourg  
Tél. 48 21 31  
Télex 2515  
CCP 49242-63

---

**NEDERLAND**

---

**Staatsdrukkerij- en uitgeverijbedrijf**

Christoffel Plantijnstraat  
Postbus 20014  
2500 EA 's-Gravenhage  
Tel. (070) 78 99 11

---

**UNITED KINGDOM**

---

**HM Stationery Office**

HMSO Publications Centre  
51 Nine Elms Lane  
London SW8 5DR  
Tel. 01-211 3935

Sub-agent:

**Alan Armstrong & Associates Ltd**

72 Park Road  
London NW1 4SH  
Tel. 01-723 3902  
Telex 297635 AAALTD G

---

**ESPAÑA**

---

**Mundi-Prensa Libros, S.A.**

Castello 37  
E-28001 Madrid  
Tel. (91) 276 02 53 - 275 46 55  
Telex 49370-MPLI-E

---

**PORTUGAL**

---

**Livraria Bertrand, s.a.r.l.**

Rua João de Deus  
Venda Nova  
Amadora  
Tél. 97 45 71  
Telex 12709-LITRAN-P

---

**SCHWEIZ / SUISSE / SVIZZERA**

---

**Librairie Payot**

6, rue Grenus  
1211 Genève  
Tél. 31 89 50  
CCP 12-236

---

**UNITED STATES OF AMERICA**

---

**European Community Information  
Service**

2100 M Street, NW  
Suite 707  
Washington, DC 20037  
Tel. (202) 862 9500

---

**CANADA**

---

**Renouf Publishing Co., Ltd**

61 Sparks Street (Mall)  
Ottawa  
Ontario K1P 5A6  
Tel. Toll Free 1 (800) 267 4164  
Ottawa Region (613) 238 8985-6

---

**JAPAN**

---

**Kinokuniya Company Ltd**

17-7 Shinjuku 3-Chome  
Shinjuku-ku  
Tokyo 160-91  
Tel. (03) 354 0131

Price (excluding VAT) in Luxembourg • Prix publics au Luxembourg (TVA exclue)

	ECU	BFR	FF	IRL	UKL	USD
Single copy • Prix par numéro	2,23	100	16	1.60	1.40	2
Subscription • Abonnement	28,96	1 300	195	20.75	17	24



KONTORET FOR DE EUROPÆISKE FÆLLESSKABERS OFFICIELLE PUBLIKATIONER  
AMT FÜR AMTLICHE VERÖFFENTLICHUNGEN DER EUROPÄISCHEN GEMEINSCHAFTEN  
ΥΠΗΡΕΣΙΑ ΕΠΙΣΗΜΩΝ ΕΚΔΟΣΕΩΝ ΤΩΝ ΕΥΡΩΠΑΪΚΩΝ ΚΟΙΝΟΤΗΤΩΝ  
OFFICE FOR OFFICIAL PUBLICATIONS OF THE EUROPEAN COMMUNITIES  
OFICINA DE LAS PUBLICACIONES OFICIALES DE LAS COMUNIDADES EUROPEAS  
OFFICE DES PUBLICATIONS OFFICIELLES DES COMMUNAUTÉS EUROPÉENNES  
UFFICIO DELLE PUBBLICAZIONI UFFICIALI DELLE COMUNITÀ EUROPEE  
BUREAU VOOR OFFICIËLE PUBLIKATIES DER EUROPESE GEMEENSCHAPPEN  
SERVIÇO DAS PUBLICAÇÕES OFICIAIS DAS COMUNIDADES EUROPEIAS

ISSN 0258-0861