

Consumer price index

Indice des prix à la consommation

9 1986 Monthly Mensuel

PRICES : Marked increase in September (+0.5%)

For the first time since January 1986, the CPI for the Community as a whole increased significantly between August and September (+0.5%).

The September result was mainly marked by a further escalation of the index for Greece (3.8%) and by big increases for Spain (+1.1%) and Denmark (+0.8%).

The increases for the other countries were as follows: +0.5% in the U.K., +0.4% in France, the Netherlands and Portugal, 0.3% in Italy, Belgium and Luxembourg and 0.2% in Germany (F.R.).

The inflation rate over 12 months for EUR 12 remains fairly stable and was 3.4% (September '86 compared to September '85). This rate was 1.6% for the USA (August '86) and 0.4% for Japan.

For the Member States the rates over 12 months (Sept.'86/Sept.'85) are the following:

Germany (FR)	-0.4%	France	+2.3%	Italy	+5.5%
Netherlands	-0.4%	United Kingdom	+3.0%	Spain	+9.5%
Luxembourg	-0.3%	Ireland	+3.1% (Aug)	Portugal	+11.8%
Belgium	+0.9%	Denmark	+4.6%	Greece	+22.9%

Inflation rates for the non-Community countries, for which Eurostat publishes the CPI are:

Switzerland	+1.7%	Finland	+3.3%
Austria	+1.4%	Sweden	+4.4%
Canada	+4.1%	Norway	+8.6%

N.B.: See also the methodological note on the calculation of the EUR 12 and EUR 10 indices on page 6 of this bulletin.



DE EUROPÆISKE FÆLLESSKABERS STATISTISKE KONTOR
STATISTISCHES AMT DER EUROPÄISCHEN GEMEINSCHAFTEN
ΣΤΑΤΙΣΤΙΚΗ ΥΠΗΡΕΣΙΑ ΤΩΝ ΕΥΡΩΠΑΪΚΩΝ ΚΟΙΝΟΤΗΤΩΝ
STATISTICAL OFFICE OF THE EUROPEAN COMMUNITIES
OFICINA ESTADÍSTICA DE LAS COMUNIDADES EUROPEAS
OFFICE STATISTIQUE DES COMMUNAUTÉS EUROPÉENNES
ISTITUTO STATISTICO DELLE COMUNITÀ EUROPEE
BUREAU VOOR DE STATISTIEK DER EUROPESE GEMEENSCHAPPEN
SERVIÇO DE ESTATÍSTICA DAS COMUNIDADES EUROPEIAS

L-2920 Luxembourg – Tél. 43011 – Télex : Comeur Lu 3423
B-1049 Bruxelles, Bâtiment Berlaymont, Rue de la Loi 200 (Bureau de liaison) – Tél. 235 11 11

The information included in this bulletin has been taken from the Cronos data bank, which is accessible via the different host companies. For all information about these host companies contact Eurostat in Luxembourg, tel. 4301-3220. To obtain specifications of the principal characteristics of the series contained in this bulletin contact Luxembourg, tel.

4301-3202 or 4301-3511

Les informations reprises dans ce bulletin sont extraites de la banque de données Cronos, qui est accessible via différents serveurs. Pour toute information concernant ces serveurs s'adresser à l'Eurostat, Luxembourg, tél. 4301-3220. Pour obtenir des précisions sur les caractéristiques principales des séries contenues dans ce bulletin s'adresser à Luxembourg, tél. **4301-3202 ou 4301-3511**

Luxembourg : Office des publications officielles des Communautés européennes, 1986

Reproduction is authorized, except by commercial data-base networks, subject to acknowledgement of the source.
For conditions relating to reproduction by data-base services, application should be made to Eurostat, L-2920 Luxembourg.

La reproduction, autorisée sauf sur réseau informatique commercial, est subordonnée à l'indication de la source.
Toute demande concernant les conditions de reproduction sur réseau informatique devra être envoyée à l'Eurostat, L-2920 Luxembourg.

VERBRAUCHERPREISE
GESAMTINDEX

CONSUMER PRICES
GENERAL INDEX

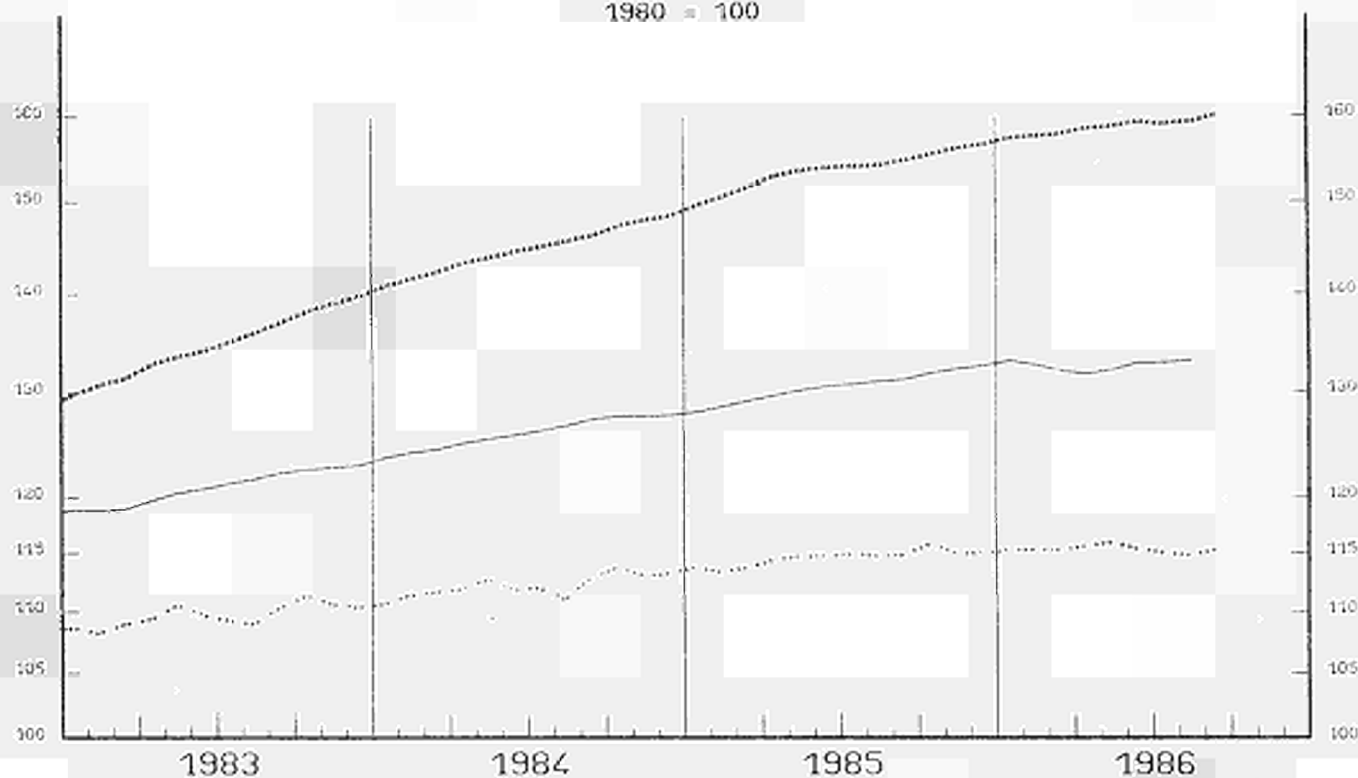
PRIX A LA CONSOMMATION
INDICE GENERAL

— USA

..... EUR 12

... JAPAN

1980 = 100



BEI FACH-LOGARITHMISCHER SKALA

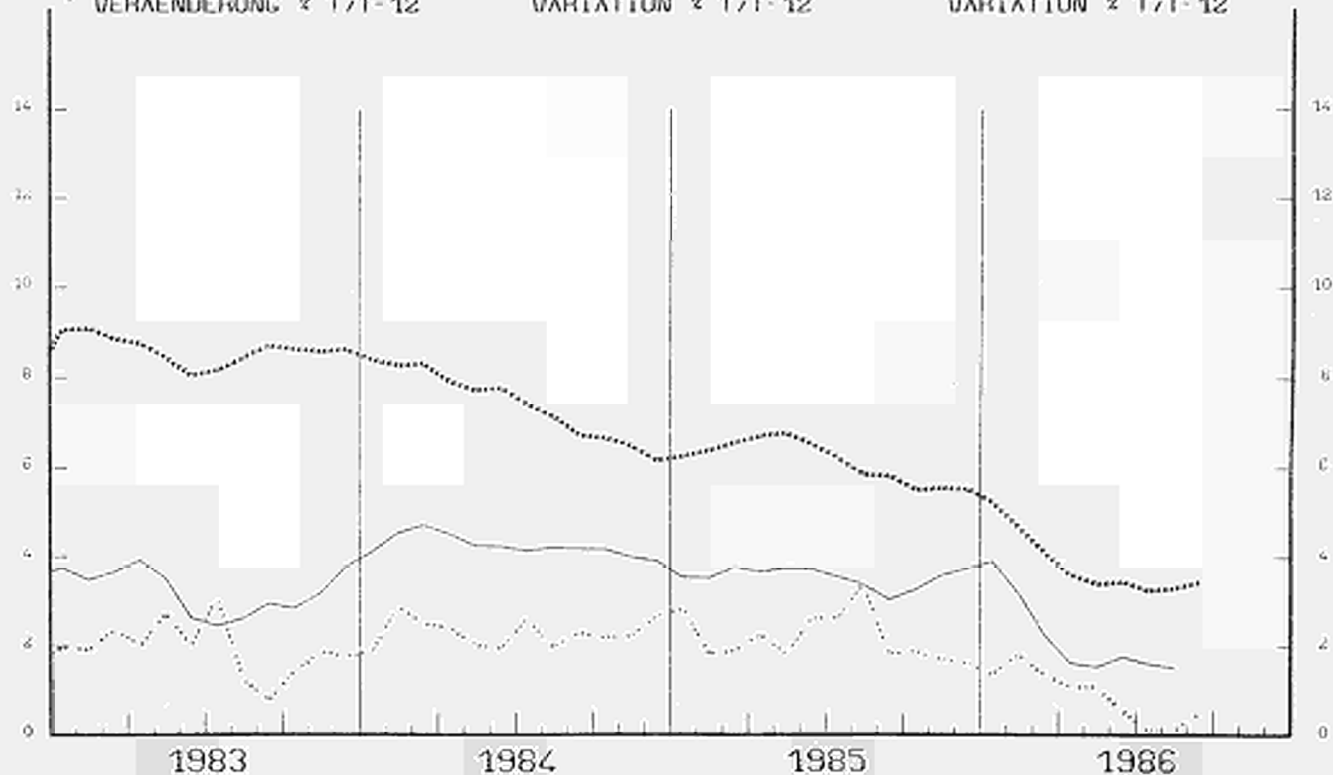
BEI FACH-LOGARITHMISCHER SKALA

BEI FACH-LOGARITHMISCHER SKALA

VERÄNDERUNG × T/T-12

VARIATION × T/T-12

VARIATION × T/T-12



CONSUMER PRICES

A

PRIX A LA CONSOMMATION

GENERAL INDEX

INDICE GENERAL

	EUR 10	BR DEUTSCH LAND	FRANCE	ITALIA	NEDER= LAND	BELGIQUE BELGIE	LUXEM= BOURG	UNITED KINGDOM	IRELAND	DANMARK	ELLAS	ESPANA	PORTUGAL	EUR 12	USA	JAPAN
	PRICE INDICES							1980 = 100		INDICES DE PRIX						
1981 O	111.7	106.3	113.4	117.8	106.7	107.6	108.1	111.9	120.4	111.7	124.5	114.6	120.0	112.1	110.3	104.9
1982 O	123.0	111.9	126.8	137.2	112.8	117.0	118.2	121.5	141.1	123.0	150.5	131.1	147.3	124.2	117.1	107.7
1983 O	132.7	115.6	139.0	157.3	115.9	126.0	128.4	127.1	155.8	131.5	181.4	147.0	184.3	134.8	120.9	109.7
1984 O	141.2	118.4	149.3	174.3	119.6	134.0	135.7	133.4	169.2	139.8	214.6	163.6	237.5	144.8	126.1	112.1
1985 O	149.1	121.0	158.0	190.3	122.3	140.5	141.3	141.5	178.4	146.4	256.3	178.0	284.1	153.7	130.5	114.4
1985 S	150.2	120.9	159.3	192.3	122.8	141.5	142.7	142.8	:	147.0	264.1	180.3	286.7	154.8	131.5	114.8
1985 O	150.8	121.1	159.8	194.3	123.2	141.4	143.9	143.0	:	147.4	272.9	181.0	289.7	155.5	131.9	115.8
1985 N	151.4	121.3	160.1	195.8	123.2	141.8	144.2	143.5	180.5	148.0	279.6	182.5	294.4	156.2	132.3	114.9
1985 D	151.7	121.4	160.3	196.9	122.9	141.8	144.5	143.7	:	147.9	288.8	183.2	299.4	156.6	132.6	115.0
1986 J	152.1	121.6	160.4	197.9	122.4	142.0	144.2	144.0	:	147.5	295.6	188.4	305.1	157.4	133.1	115.2
1986 F	152.1	121.3	160.0	198.7	122.6	142.1	143.6	144.5	183.3	147.4	293.5	189.3	309.2	157.6	132.7	115.3
1986 M	152.4	121.0	160.4	199.6	122.7	141.9	142.9	144.7	:	148.0	302.8	190.1	312.7	157.9	132.1	115.2
1986 A	153.0	120.9	161.0	200.0	123.2	142.4	142.7	146.1	:	151.8	307.3	190.5	316.8	158.5	131.8	115.6
1986 M	153.3	120.9	161.4	201.0	123.2	142.0	142.7	146.4	185.5	152.9	309.0	191.0	315.3	158.8	132.2	115.9
1986 J	153.5	121.1	161.9	201.8	122.7	142.2	142.6	146.3	:	152.7	314.3	192.7	316.3	159.2	132.9	115.3
1986 J	153.3	120.5	162.1	201.8	121.7	142.2	142.3	145.9	:	151.7	312.6	194.7	316.2	159.1	132.9	115.0
1986 A	153.4	120.2	162.3	202.2	121.8	142.3	141.9	146.3	185.8	152.5	312.5	195.3	319.4	159.3	133.1	114.8
1986 S	154.0	120.4	162.9	202.8P	122.3	142.8	142.3	147.0	:	153.7	324.4	197.4	320.5	160.1	:	115.3
	RATE OF INCREASE OVER ONE MONTH (IRELAND 3 MONTHS)							(T/T-1)		TAUX DE CROISSANCE SUR UN MOIS (IRLANDE 3 MOIS)						
85 S/A	0.3	0.2	0.1	0.5	0.5	0.2	0.0	-0.1	:	0.5	5.0	1.1	0.1	0.4	0.3	0.1
85 O/S	0.4	0.2	0.3	1.0	0.3	-0.1	0.8	0.2	:	0.3	3.3	0.4	1.0	0.4	0.3	0.9
85 N/O	0.4	0.2	0.2	0.8	0.0	0.2	0.2	0.3	0.2	0.4	2.5	0.8	1.6	0.4	0.3	-0.8
85 D/N	0.2	0.1	0.1	0.6	-0.2	0.0	0.2	0.1	:	-0.1	3.3	0.4	1.7	0.3	0.2	0.1
86J/85D	0.2	0.2	0.1	0.5	-0.4	0.1	-0.2	0.2	:	-0.3	2.3	2.8	1.9	0.5	0.3	0.2
86 F/J	0.0	-0.2	-0.2	0.4	0.2	0.1	-0.4	0.4	1.6	-0.1	-0.7	0.5	1.3	0.1	-0.3	0.1
86 M/F	0.2	-0.2	0.2	0.5	0.1	-0.2	-0.5	0.1	:	0.4	3.2	0.4	1.2	0.2	-0.5	-0.1
86 A/M	0.4	-0.1	0.4	0.2	0.4	0.3	-0.1	1.0	:	2.6	1.5	0.2	1.3	0.4	-0.2	0.3
86 M/A	0.2	0.0	0.2	0.5	0.0	-0.2	0.0	0.2	1.2	0.7	0.5	0.2	-0.5	0.2	0.3	0.3
86 J/M	0.1	0.2	0.3	0.4	-0.4	0.1	-0.1	-0.1	:	-0.1	1.7	0.9	0.3	0.2	0.5	-0.5
86 J/J	-0.2	-0.5	0.1	0.0	-0.8	0.0	-0.2	-0.3	:	-0.7	-0.5	1.0	0.0	-0.1	0.0	-0.3
86 A/J	0.1	-0.2	0.1	0.2	0.1	0.1	-0.3	0.3	0.2	0.5	0.0	0.3	1.0	0.1	0.2	-0.2
86 S/A	0.4	0.2	0.4	0.3P	0.4	0.3	0.3	0.5	:	0.8	3.8	1.1	0.4	0.5	:	0.4
	RATE OF INCREASE OVER 12 MONTHS							(T/T-12)		TAUX DE CROISSANCE SUR 12 MOIS						
85/84 S	5.4	2.2	5.3	8.8	2.3	4.6	3.9	5.9	:	3.9	20.1	8.3	15.8	5.8	3.2	1.8
85/84 O	5.1	1.8	4.9	8.9	1.9	4.0	4.0	5.4	:	3.7	21.1	8.1	16.0	5.5	3.2	1.8
85/84 N	5.1	1.8	4.8	8.9	1.8	4.2	4.0	5.5	4.9	3.4	22.7	8.4	16.0	5.5	3.6	1.7
85/84 D	5.1	1.8	4.7	8.8	1.7	4.0	4.1	5.7	:	3.6	25.0	8.1	16.8	5.6	3.8	1.6
86/85 J	4.7	1.3	4.2	8.2	1.5	3.5	3.6	5.5	:	2.8	25.0	9.2	14.2	5.3	3.9	1.3
86/85 F	4.0	0.7	3.4	7.3	1.3	2.5	2.6	5.1	4.6	2.1	24.4	9.0	12.6	4.6	3.2	1.8
86/85 M	3.4	0.1	3.0	7.0	0.7	1.5	1.5	4.2	:	1.7	24.8	8.7	12.2	4.1	2.3	1.3
86/85 A	3.0	-0.2	2.6	6.4	0.7	1.4	0.5	3.0	:	4.0	24.7	7.8	12.3	3.6	1.6	1.0
86/85 M	2.8	-0.2	2.3	6.1	0.5	1.1	0.4	2.8	4.4	4.0	24.5	7.7	11.5	3.4	1.6	1.0
86/85 J	2.6	-0.2	2.3	6.0	0.2	1.2	0.1	2.5	:	3.9	24.4	8.9	11.7	3.4	1.7	0.5
86/85 J	2.4	-0.5	2.0	5.8	-0.4	0.7	-0.6	2.4	:	3.6	24.6	9.3	11.2	3.2	1.6	0.1
86/85 A	2.5	-0.4	2.0	5.7	-0.3	0.8	-0.5	2.4	3.1	4.3	24.2	9.5	11.5	3.3	1.6	0.1
86/85 S	2.6	-0.4	2.3	5.5P	-0.4	0.9	-0.3	3.0	:	4.6	22.9	9.5	11.8	3.4	:	0.4

CONSUMER PRICES

B

PRIX A LA CONSOMMATION

GENERAL INDEX

INDICE GENERAL

	SWITZERLAND SUISSE SCHWEIZ	AUSTRIA AUTRICHE OESTERREICH	NORWAY NORVEGE NORGE	SWEDEN SUEDE SVERIGE	FINLAND FINLANDE SUOMI	CANADA CANADA CANADA
	PRICE INDICES			1980 = 100	INDICES DE PRIX	
1981 O	106.5	106.8	113.6	112.1	111.9	112.5
1982 O	112.5	112.6	126.5	121.7	122.6	124.6
1983 O	115.8	116.3	137.2	132.5	132.8	131.8
1984 O	119.2	122.9	145.7	143.2	142.2	137.6
1985 O	123.3	126.9	154.0	153.7	150.5	143.1
1985 S	123.3	127.2	155.9	154.5	151.9	143.9
1985 O	123.7	127.2	156.3	155.5	152.1	144.4
1985 N	124.5	127.5	156.8	156.5	152.2	145.0
1985 D	124.6	127.8	157.3	157.1	152.3	145.7
1986 J	124.5	129.0	158.9	158.9	153.4	146.3
1986 F	124.5	129.1	159.5	159.0	154.2	146.9
1986 M	124.7	128.9	160.5	158.7	154.5	147.2
1986 A	124.6	128.6	161.6	159.7	155.1	147.5
1986 M	124.2	128.5	161.8	159.7	155.6	148.1
1986 J	124.2	128.9	164.6	159.7	156.4	148.4
1986 J	123.6	129.0	166.3	160.1	156.5	149.5
1986 A	123.8	129.3	166.9	159.9	156.8	149.9
1986 S	124.1	129.5	169.2	161.3	156.9	149.9
	RATE OF INCREASE OVER ONE MONTH			(T/T-1)	TAUX DE CROISSANCE SUR UN MOIS	
85 S/A	0.3	0.1	1.0	0.5	0.1	0.1
85 O/S	0.3	0.0	0.2	0.6	0.1	0.4
85 N/O	0.7	0.2	0.3	0.6	0.1	0.4
85 D/N	0.1	0.3	0.3	0.4	0.1	0.5
86J/85D	-0.1	0.9	1.0	1.1	0.7	0.5
86 F/J	0.0	0.1	0.4	0.1	0.5	0.4
86 M/F	0.1	-0.2	0.6	-0.2	0.2	0.2
86 A/M	-0.1	-0.2	0.7	0.6	0.4	0.2
86 M/A	-0.3	-0.1	0.1	0.0	0.3	0.5
86 J/M	0.0	0.3	1.7	0.0	0.5	0.2
86 J/J	-0.5	0.1	1.0	0.3	0.1	0.8
86 A/J	0.2	0.3	0.4	-0.1	0.2	0.3
86 S/A	0.2	0.1	1.4	0.9	0.1	0.0
	RATE OF INCREASE OVER 12 MONTHS			(T/T-12)	TAUX DE CROISSANCE SUR 12 MOIS	
85/84 S	3.3	2.9	5.8	6.7	5.3	4.0
85/84 O	3.0	2.7	5.6	6.9	4.9	4.2
85/84 N	3.1	2.6	5.7	6.9	4.9	4.0
85/84 D	3.3	2.8	5.6	5.6	4.9	4.4
86/85 J	2.2	2.9	6.0	6.2	4.5	4.4
86/85 F	1.3	2.5	6.1	5.3	4.6	4.1
86/85 M	1.0	1.8	5.5	4.3	3.8	4.1
86/85 A	1.0	1.4	5.8	4.6	3.7	3.9
86/85 M	0.7	1.5	5.6	3.4	3.0	4.1
86/85 J	0.8	1.5	6.7	3.8	3.3	3.7
86/85 J	0.5	1.5	7.4	4.1	3.4	4.2
86/85 A	0.7	1.7	8.1	4.0	3.4	4.3
86/85 S	0.7	1.8	8.6	4.4	3.3	4.1

METHODOLOGY

The consumer price indices given here are the national indices which have different names in the different countries. As far as trends are concerned, the general index published by EUROSTAT always corresponds to the general index published by the country concerned. The component items of this general index are groups of national indices aggregated according to a harmonized classification conforming to the ESA (European System of Integrated Economic Accounts). For these groups, the price trends correspond to the trends noted by the national indices for the same classification field.

The field covered by the general index varies according to country: as regards the population concerned (specific income bracket, certain socio-professional categories or total households), the geographical areas used (capital, urban areas, country as a whole, etc.) or differences in treatment of expenditure on rent, health care etc. Finally, there is no uniform method for seasonal adjustments.

A fixed base system is used in some countries, whereas in others a chain system is used (variable weightings). The reference years used at national level for the indices vary according to country. For ease of comparison, EUROSTAT has chosen 1980 as the common year for the presentation of these indices.

CALCULATION OF EUR-10 AND EUR-12 INDICES

The EUR-10 and EUR-12 indices calculated by EUROSTAT are weighted indices.

The weighting used is the proportion of each country in the total consumption of EUR-10 and EUR-12 respectively. The values of this consumption in national currency are converted in purchasing power standards. For this purpose the purchasing power parities of the G.D.P. are used.

The index calculated is of the chain Laspeyres type.

However, the weighting is displaced by three years since the national accounts data become available with a delay of approximately three years. For example: the weighting used for 1986 is that of 1983, for 1980, that of 1977.

Moreover, the national accounts data are often modified, leading to revisions.

In order to avoid continuous corrections in the EUR-10 and EUR-12 indices, EUROSTAT has decided to "freeze" the historical data.

When Member States carry out major revisions in price series for past years, EUR-10 and EUR-12 data will be calculated using the new series.

Venta y suscripciones · Salg og abonnement · Verkauf und Abonnement · Πωλήσεις και συνδρομές
Sales and subscriptions · Vente et abonnements · Vendita e abbonamenti
Verkoop en abonnementen · Venda e assinaturas

BELGIOUE/BELGIË

Moniteur belge/Belgisch Staatsblad
Rue de Louvain 40-42/Leuvensestraat 40-42
1000 Bruxelles/1000 Brussel
Tél. 512 00 26
CCP/Postrekening 000-2005502-27
Sous-dépôts/Agentschappen:
**Librairie européenne/
Europese Boekhandel**
Rue de la Loi 244/Wetstraat 244
1040 Bruxelles/1040 Brussel
CREDOC
Rue de la Montagne 34/Bergstraat 34
Bte 11/Bus 11
1000 Bruxelles/1000 Brussel

DANMARK

Schultz EF-publikationer
Møntergade 19
1116 København K
Tlf: (01) 14 11 95
Girokonto 200 11 95

BR DEUTSCHLAND

Bundesanzeiger Verlag
Breite Straße
Postfach 10 80 06
5000 Köln 1
Tel. (02 21) 20 29-0
Fernschreiber:
ANZEIGER BONN 8 882 595
Telecopierer:
20 29 278

GREECE

G.C. Eleftheroudakis SA
International Bookstore
4 Nikis Street
105 63 Athens
Tel. 322 22 55
Telex 219410 ELEF

Sub-agent for Northern Greece:

Molho's Bookstore
The Business Bookshop
10 Tsimiski Street
Thessaloniki
Tel. 275 271
Telex 412885 LIMO

ESPAÑA

Boletín Oficial del Estado
Trafalgar 27
E-28010 Madrid
Tel. (91) 446 60 00

Mundi-Prensa Libros, S.A.

Castelló 37
E-28001 Madrid
Tel. (91) 431 33 99 (Libros)
431 32 22 (Suscripciones)
435 36 37 (Dirección)
Télex 49370-MPLI-E

FRANCE

**Service de vente en France des publications
des Communautés européennes**
Journal officiel
26, rue Desaix
75732 Paris Cedex 15
Tél. (1) 45 78 61 39

IRELAND

Government Publications Sales Office
Sun Alliance House
Molesworth Street
Dublin 2
Tel. 71 03 09

or by post

Stationery Office
St Martin's House
Waterloo Road
Dublin 4
Tel. 68 90 66

ITALIA

Licosa Spa
Via Lamarmora, 45
Casella postale 552
50 121 Firenze
Tel. 57 97 51
Telex 570466 LICOSA I
CCP 343 509

Subagenti:

Libreria scientifica Lucio de Biasio - AEIOU
Via Meravigli, 16
20 123 Milano
Tel. 80 76 79

Libreria Tassi
Via A. Farnese, 28
00 192 Roma
Tel. 31 05 90

Libreria giuridica
Via 12 Ottobre, 172/R
16 121 Genova
Tel. 59 56 93

GRAND-DUCHÉ DE LUXEMBOURG

**Office des publications officielles
des Communautés européennes**
2, rue Mercier
L-2985 Luxembourg
Tél. 49 92 81
Télex PUBOF LU 1324 b
CCP 19190-81
CC bancaire BIL 8-109/6003/200

Messengeries Paul Kraus
11, rue Christophe Plantin
L-2339 Luxembourg
Tél. 48 21 31
Télex 2515
CCP 49242-63

NEDERLAND

Staatsdrukkerij- en uitgeverijbedrijf
Christoffel Plantijnstraat
Postbus 20014
2500 EA 's-Gravenhage
Tel. (070) 78 99 11

PORTUGAL

Imprensa Nacional
Av. Francisco Manuel de Melo, 5
P-1000 Lisboa
Tel. 65 39 96

**Distribuidora Livros Bertrand Lda.
Grupo Bertrand, SARL**
Rua das Terras dos Vales, 4-A
Apart. 37
P-2700 Amadora CODEX
Tel. 493 90 50 - 494 87 88
Telex 15798 BERDIS

UNITED KINGDOM

HM Stationery Office
HMSO Publications Centre
51 Nine Elms Lane
London SW8 5DR
Tel. (01) 211 56 56

Sub-agent:

Alan Armstrong & Associates Ltd
72 Park Road
London NW1 4SH
Tel. (01) 723 39 02
Telex 297635 AAALTD G

SCHWEIZ/SUISSE/SVIZZERA

Librairie Payot
6, rue Grenus
1211 Genève
Tél. 31 89 50
CCP 12-236

UNITED STATES OF AMERICA

**European Community Information
Service**
2100 M Street, NW
Suite 707
Washington, DC 20037
Tel. (202) 862 9500

CANADA

Renouf Publishing Co., Ltd
61 Sparks Street
Ottawa
Ontario K1P 5R1
Tel. Toll Free 1 (800) 267 4164
Ottawa Region (613) 238 8985-6
Telex 053-4936

JAPAN

Kinokuniya Company Ltd
17-7 Shinjuku 3-Chome
Shinjuku-ku
Tokyo 160-91
Tel. (03) 354 0131

Journal Department
PO Box 55 Chitose
Tokyo 156
Tel. (03) 439 0124

Price (excluding VAT) in Luxembourg • Prix publics au Luxembourg (TVA exclue)

	ECU	BFR	FF	IRL	UKL	USD
Single copy • Prix par numéro	2,23	100	16	1.60	1.40	2
Subscription • Abonnement	28,96	1 300	195	20.75	17	24



KONTORET FOR DE EUROPÆISKE FÆLLESSKABERS OFFICIELLE PUBLIKATIONER
AMT FÜR AMTLICHE VERÖFFENTLICHUNGEN DER EUROPÄISCHEN GEMEINSCHAFTEN
ΥΠΗΡΕΣΙΑ ΕΠΙΣΗΜΩΝ ΕΚΔΟΣΕΩΝ ΤΩΝ ΕΥΡΩΠΑΪΚΩΝ ΚΟΙΝΟΤΗΤΩΝ
OFFICE FOR OFFICIAL PUBLICATIONS OF THE EUROPEAN COMMUNITIES
OFICINA DE LAS PUBLICACIONES OFICIALES DE LAS COMUNIDADES EUROPEAS
OFFICE DES PUBLICATIONS OFFICIELLES DES COMMUNAUTÉS EUROPÉENNES
UFFICIO DELLE PUBBLICAZIONI UFFICIALI DELLE COMUNITÀ EUROPEE
BUREAU VOOR OFFICIËLE PUBLIKATIES DER EUROPESE GEMEENSCHAPPEN
SERVIÇO DAS PUBLICAÇÕES OFICIAIS DAS COMUNIDADES EUROPEIAS

ISSN 0258-0861