

Consumer price index

III 1986 QUARTERLY SUPPLEMENT

CONSUMER PRICE INDICES 1984-1986

This bulletin is an updating of the publication "Consumer price indices 1982-1985".

It contains exactly the same tables, which have been completed up to the month of September 1986.

CONTENTS

PAGE

00 Relative part in % of each group in the weights	3
A. Consumer Prices - General index	4 - 5
B. Food (excl. drinks and meals out)	6 - 7
B.1 Bread and cereals	8
B.2 Meat	9
B.3 Dairy products, eggs oils and fats	10
B.4 Fruits, vegetables, potatoes	11
C. Drinks (home consumption) and tobacco	12-13
C.1 Drinks (home consumption)	14
C.2 Tobacco	15
D. Clothing and footwear (incl. repairs)	16-17
D.1 Clothing (incl. repairs)	18
D.2 Footwear (incl. repairs)	19
E. Rent, heating and lighting	20-21
E.1 Rents and water charges	22
F. Household goods and services	24-25
F.1 Furniture, floorcoverings, household textiles	26
F.2 Household appliances, utensils and services	27
G. Transport and communications	28-29
G.1 Private transport	30
G.2 Public transport	31
G.3 Communications	32
H. Recreation and education, etc.	34-35
H.1 Recreational goods	36
H.2 Recreational services	37
H.3 Books, newspaper and magazines	38
J. Other goods and services	40-41
J.1 Expenditures in hotels, pubs and restaurants	42
K. Energy products	43
L. Historical series 1955-1985 : EC-countries, USA, Canada, Japan	44
M. Historical series 1955-1985 : Switzerland, Austria, Norway, Sweden, Finland	45
N. Table of sources	46-47



DE EUROPÆISKE FÆLLESSKABERS STATISTISKE KONTOR
STATISTISCHES AMT DER EUROPÄISCHEN GEMEINSCHAFTEN
ΣΤΑΤΙΣΤΙΚΗ ΥΠΗΡΕΣΙΑ ΤΩΝ ΕΥΡΩΠΑΪΚΩΝ ΚΟΙΝΟΤΗΤΩΝ
STATISTICAL OFFICE OF THE EUROPEAN COMMUNITIES
OFICINA ESTADÍSTICA DE LAS COMUNIDADES EUROPEAS
OFFICE STATISTIQUE DES COMMUNAUTÉS EUROPÉENNES
ISTITUTO STATISTICO DELLE COMUNITÀ EUROPEE
BUREAU VOOR DE STATISTIEK DER EUROPESE GEMEENSCHAPPEN
SERVIÇO DE ESTATÍSTICA DAS COMUNIDADES EUROPEIAS

L-2920 Luxembourg — Tél. 43011 — Télex : Comeur Lu 3423
B-1049 Bruxelles, Bâtiment Berlaymont, Rue de la Loi 200 (Bureau de liaison) — Tél. 235 11 11

The information included in this bulletin has been taken from the Cronos data bank, which is accessible via the different host companies. For all information about these host companies contact Eurostat in Luxembourg, tel. 4301-3220. To obtain specifications of the principal characteristics of the series contained in this bulletin contact Luxembourg, tel. **4301-3202 or 4301-3511**

Luxembourg : Office des publications officielles des Communautés européennes, 1986

Reproduction is authorized, except by commercial data-base networks, subject to acknowledgement of the source.
For conditions relating to reproduction by data-base services, application should be made to Eurostat, L-2920 Luxembourg.

Printed in Luxembourg

PART RELATIVE EN % DE CHAQUE GROUPE DANS LA PONDERATION

RELATIVE PART IN % OF EACH GROUP IN THE WEIGHTS

		D	F	I	N	B	L	UK	IRL	DK	GR	SP	PORT		
I A	PRODUITS ALIMENTAIRES	14.7	21.8	29.5	16.4	19.3	32.4	18.0	22.3	18.5	27.2	29.8	40.7	FOOD PRODUCTS	1 A
I B	BOISSONS ET TABACS	5.2	4.7	4.5	3.6	4.0	5.2	11.6	7.3	8.0	3.4	3.2	5.2	DRINKS AND TOBACCO	1 B
II	HABILLEMENT ET CHAUSSURES	8.2	8.2	10.2	8.1	8.2	9.5	7.6	8.8	5.5	12.8	8.7	9.4	CLOTHING AND FOOTWEAR	II
III	LOYERS, CHAUFFAGE, ECLAIRAGE	21.3	13.7	7.6	21.6	19.6	10.8*	21.8	9.6	27.3	13.1	18.6	15.5	RENT, FUEL, POWER	III
IV	BIENS ET SERVICE DE MENAGE	9.4	9.2	8.0	8.0	9.5	9.9	8.1	6.5	7.2	8.9	7.4	7.4	HOUSEHOLD GOODS AND SERVICES	IV
V	DEPENSES DE SANTE	4.1	6.9	4.0	11.9	4.0	3.8	0.5	2.3	1.8	4.5	2.4	2.8	HEALTH COSTS	V
VI	TRANSPORT ET COMMUNICATIONS	14.3	15.2	12.6	11.2	15.4	13.5	17.4	16.4	14.9	13.0	14.4	8.3	TRANSPORT AND COMMUNICATIONS	VI
VII	LOISIRS, CULTURE, ENSEIGNEMENT	8.4	6.8	7.9	8.7	8.2	6.2	5.9	8.1	9.2	6.3	7.0	4.3	RECREATION AND EDUCATION	VII
VIII	AUTRES BIENS ET SERVICES	14.4	13.5	15.7	10.5	11.8	8.7	9.1	18.7	7.6	10.8	8.5	6.4	OTHER GOODS AND SERVICES	VIII
	INDICE GENERAL	100.0	100.0	100.0	100.0	100.0	100.0	100.0	100.0	100.0	100.0	100.0	100.0	GENERAL INDEX	
	ANNEE DE REFERENCE	1980	1984	1979	1980	1978/79	1977	1984	1981	1981	1982	1983	1973/74	REFERENCE YEAR	

CONSUMER PRICES

PRIX A LA CONSOMMATION

	EUR10	BR DEUTSCH LAND	FRANCE	ITALIA	NEDER- LAND	BELGIQUE BELGIË	LUXEM- BOURG	UNITED KINGDOM	IRELAND	DANMARK	ELLAS	ESPAÑA	PORTU- GAL	USA	CANADA	JAPAN
					PRICE INDICES	1980 = 100			INDICES DE PRIX							
1982 Ø	123.0	111.9	126.8	137.2	112.8	117.0	118.2	121.5	141.1	123.0	150.5	131.1	147.3	117.1	124.6	107.7
1983 Ø	132.7	115.6	139.0	157.3	115.9	126.0	128.4	127.1	155.8	131.5	181.4	147.0	184.3	120.9	131.8	109.7
1984 Ø	141.2	118.4	149.2	174.3	119.6	134.0	135.7	133.4	169.2	139.8	214.6	163.5	237.5	126.1	137.6	112.1
1985 Ø	149.1	121.0	158.0	190.3	122.3	140.5	141.3	141.5	178.4	146.4	256.3	178.0	284.1	130.5	143.1	114.4
1984 J	137.6	117.5	144.5	167.4	117.8	130.7	134.0	129.9		135.6	198.6	157.6	214.5	123.7	135.2	110.6
1984 F	138.4	117.8	145.4	169.4	118.3	131.6	135.0	130.5	165.1	137.1	199.5	158.2	218.0	124.2	136.0	111.3
1984 M	139.1	117.9	146.4	170.6	118.9	132.2	135.5	130.9		137.6	205.5	159.6	226.3	124.5	136.3	111.6
1984 A	140.0	118.1	147.3	171.9	119.4	133.1	136.0	132.6		138.0	209.5	160.5	230.7	125.1	136.7	111.9
1984 M	140.6	118.2	148.1	173.0	119.4	133.4	136.4	133.1	168.8	139.4	212.2	161.3	228.6	125.5	136.9	112.7
1984 J	141.2	118.6	148.8	174.0	119.4	133.7	136.5	133.4		140.2	215.6	162.5	235.8	125.9	137.5	111.8
1984 J	141.4	118.4	149.8	174.4	119.3	134.4	136.8	133.3		139.9	214.9	165.0	242.3	126.3	138.2	112.0
1984 A	141.9	118.2	150.6	175.3	119.4	135.0	137.1	134.5	170.9	140.5	213.7	166.1	246.9	126.8	138.2	111.0
1984 S	142.5	118.3	151.3	176.7	120.0	135.4	137.3	134.8		141.5	219.9	166.4	247.5	127.4	138.4	112.8
1984 O	143.5	119.0	152.3	178.4	120.9	136.0	138.3	135.6		142.1	225.3	167.4	249.7	127.7	138.6	113.7
1984 N	144.1	119.2	152.8	179.8	121.0	136.1	138.7	136.1	172.1	143.1	227.8	168.3	253.8	127.7	139.5	113.0
1984 D	144.4	119.3	153.1	180.9	120.9	136.4	138.7	135.9		142.8	231.1	169.5	256.2	127.8	139.6	113.2
1985 J	145.3	120.0	153.9	182.9	120.6	137.2	139.1	136.4		143.5	236.4	172.6	267.2	128.1	140.2	113.7
1985 F	146.2	120.5	154.7	185.1	121.0	138.7	140.0	137.5	175.3	144.4	236.0	173.8	274.5	128.6	141.1	113.3
1985 M	147.3	120.9	155.8	186.6	121.9	139.8	140.7	138.8		145.5	242.7	174.9	278.6	129.2	141.4	113.7
1985 A	148.5	121.1	156.9	188.0	122.4	140.3	142.0	141.8		146.0	246.5	176.8	282.1	129.7	142.0	114.4
1985 M	149.1	121.2	157.7	189.4	122.6	140.5	142.1	142.4	177.6	147.0	248.2	177.3	282.9	130.2	142.3	114.7
1985 J	149.6	121.3	158.3	190.4	122.5	140.5	142.4	142.7		147.0	252.7	177.0	283.2	130.6	143.1	114.7
1985 J	149.6	121.1	158.9	190.8	122.2	141.3	143.2	142.5		146.4	250.9	178.0	284.2	130.8	143.5	114.9
1985 A	149.7	120.7	159.1	191.3	122.2	141.3	142.7	142.9	180.2	146.2	251.6	178.3	286.5	131.1	143.8	114.7
1985 S	150.2	120.9	159.3	192.3	122.8	141.5	142.7	142.8		147.0	264.1	180.3	286.7	131.5	144.0	114.8
1985 O	150.8	121.1	159.8	194.3	123.2	141.5	143.9	143.0		147.4	272.9	181.0	289.7	131.9	144.4	115.8
1985 N	151.4	121.3	160.1	195.8	123.2	141.8	144.2	143.5	180.5	148.0	279.6	182.5	294.4	132.3	145.0	114.9
1985 D	151.7	121.4	160.3	196.9	122.9	141.8	144.5	143.7		147.9	288.8	183.2	299.4	132.6	145.7	115.0
1986 J	152.1	121.6	160.4	197.9	122.4	142.0	144.2	144.0		147.5	295.6	188.4	305.1	133.1	146.3	115.2
1986 F	152.1	121.3	160.0	198.7	122.6	142.1	143.6	144.5	183.3	147.4	293.5	189.3	309.2	132.7	146.9	115.3
1986 M	152.4	121.0	160.4	199.6	122.7	141.9	142.9	144.7		148.0	302.8	190.1	312.7	132.1	147.2	115.2
1986 A	153.0	120.9	161.0	200.0	123.2	142.4	142.7	146.1		151.8	307.3	190.5	316.8	131.8	147.5	115.6
1986 M	153.3	120.9	161.4	201.0	123.2	142.0	142.7	146.4	185.5	152.9	309.0	191.0	315.3	132.2	148.1	115.9
1986 J	153.5	121.1	161.9	201.3	122.7	142.2	142.6	146.3		152.7	314.3	192.7	316.3	132.9	148.4	115.3
1986 J	153.2	120.5	162.1	201.3	121.7	142.2	142.3	145.9		151.7	312.6	194.7	316.2	132.9	149.5	115.0
1986 A	153.3	120.2	162.3	201.9	121.8	142.3	141.9	146.3	185.8	152.5	312.5	195.3	319.3	133.1	149.9	114.8
1986 S	154.0	120.4	162.9	202.5	122.4	142.8	142.3	147.1		153.7	324.4	197.3	320.5	133.8	149.9	115.3

VERBRAUCHERPREISE
GESAMTINDEX

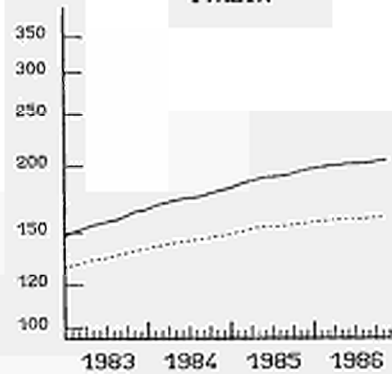
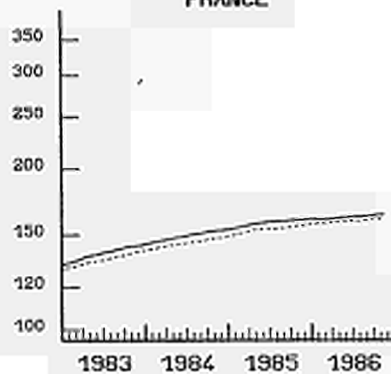
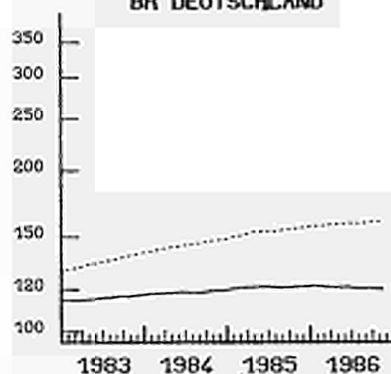
CONSUMER PRICES
GENERAL INDEX
1980 = 100

PRIX A LA CONSOMMATION
INDICE GENERAL

BR DEUTSCHLAND

FRANCE

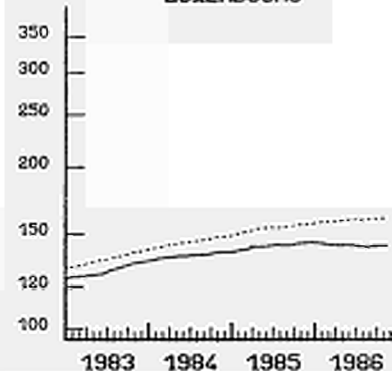
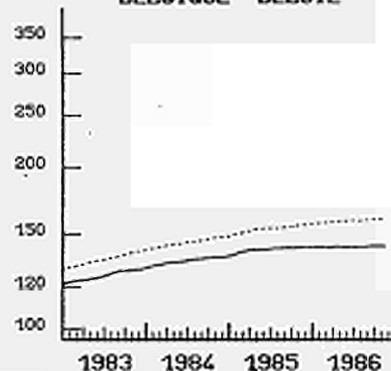
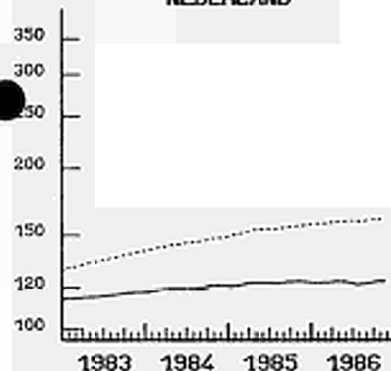
ITALIA



NEDERLAND

BELGIQUE BELGIE

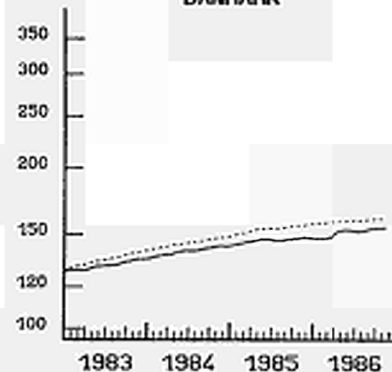
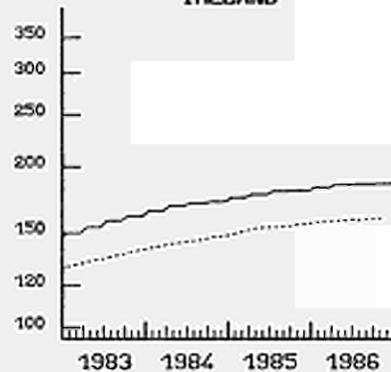
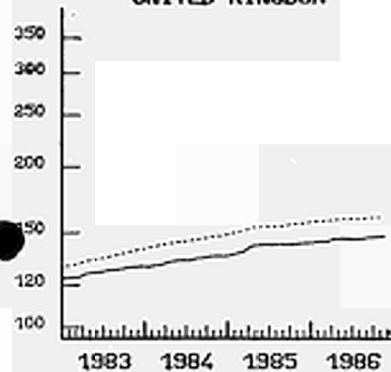
LUXEMBOURG



UNITED KINGDOM

IRELAND

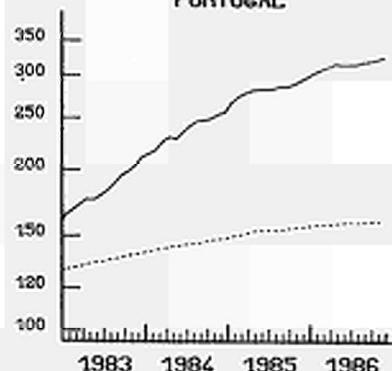
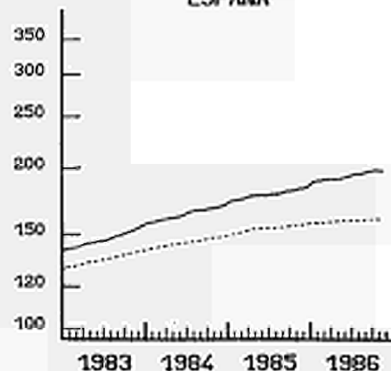
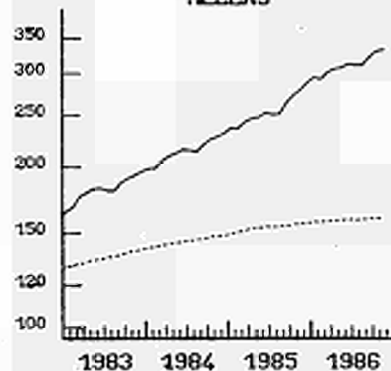
DANMARK



HELLAS

ESPANA

PORTUGAL



EINFACH-LOGARITHMISCHE SKALA

----- EUR 12
SEMI-LOGARITHMIC SCALE

ECHELLE SEMI-LOGARITHRIQUE

B

CONSUMER PRICES

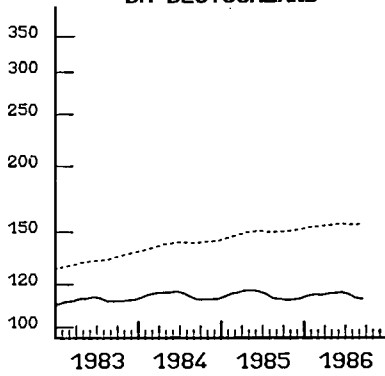
FOOD(EXCL. DRINKS AND MEALS OUT)

PRIX A LA CONSOMMATION

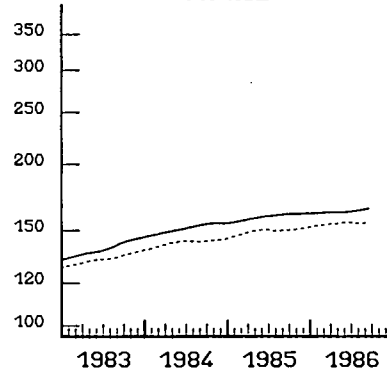
PRODUITS ALIMENTAIRES(SANS BOISSONS ET REPAS A L'EXTERIEUR)

	EUR10	BR LAND	FRANCE	ITALIA	NEDER- LAND	BELGIQUE BELGIE	LUXEM- BOURG	UNITED KINGDOM	IRELAND	DANMARK	ELLAS	ESPANA	PORTU- GAL	USA
	PRICE INDICES				1980 = 100				INDICES DE PRIX					
1982 Ø	124.0	110.3	128.3	133.8	111.7	115.6	119.6	117.0	128.0	123.8	157.5	130.9	149.4	112.2
1983 Ø	132.8	112.1	140.3	149.5	111.8	125.4	129.3	120.7	137.3	130.3	186.1	144.7	189.4	114.6
1984 Ø	142.3	114.2	151.7	163.2	115.2	134.9	138.8	127.4	151.1	141.8	219.9	163.6	251.1	119.0
1985 Ø	149.5	114.4	159.1	177.5	115.9	139.2	143.7	131.4	155.8	147.8	262.7	179.3	295.6	121.6
1984 J	138.4	113.5	146.3	157.0	114.5	130.8	135.6	125.0		136.0	203.5	158.9	229.7	117.6
1984 F	139.5	114.7	147.3	158.6	114.7	131.9	136.4	125.6	146.6	138.0	205.8	157.5	231.2	118.6
1984 M	140.7	115.4	148.4	160.0	115.6	133.8	137.4	126.5		141.0	209.5	158.5	243.6	118.7
1984 A	141.8	115.7	149.2	161.4	115.9	134.9	138.1	127.9		142.0	214.9	158.2	247.3	118.7
1984 M	142.6	115.7	150.0	162.6	115.4	134.9	138.9	128.7	153.9	142.0	220.9	158.7	240.6	118.4
1984 J	143.4	116.3	150.8	163.8	115.3	135.4	139.0	129.2		142.0	225.0	160.8	247.1	118.6
1984 J	143.2	115.4	152.0	164.0	115.1	136.3	139.5	128.4		142.0	218.7	167.1	256.8	119.1
1984 A	143.0	113.7	152.9	164.1	115.1	137.4	140.2	127.7	153.0	143.0	221.7	169.6	263.7	119.7
1984 S	143.0	112.3	153.8	165.3	114.8	136.4	140.0	127.0		144.0	223.2	167.8	262.3	119.5
1984 O	143.6	112.3	154.6	166.3	115.4	136.0	140.7	127.5		144.0	227.2	168.0	262.6	119.6
1984 N	144.0	112.5	154.7	167.2	115.6	135.2	140.6	127.6	151.1	144.0	232.1	168.3	266.8	119.4
1984 D	144.4	112.6	154.5	168.1	115.4	135.5	139.9	128.0		144.0	236.5	170.0	268.7	119.8
1985 J	145.6	113.8	154.9	169.9	115.2	136.7	140.5	129.2		145.0	242.1	175.6	285.2	120.7
1985 F	146.9	115.2	155.7	172.0	115.5	138.0	141.4	129.9	153.5	147.0	245.1	175.9	290.7	121.6
1985 M	148.2	115.8	156.7	173.5	116.7	140.0	141.6	131.1		147.0	252.1	177.2	293.8	121.6
1985 A	149.4	116.7	157.6	175.1	117.3	141.1	142.3	132.4		148.0	255.8	179.2	297.2	121.6
1985 M	150.0	116.8	158.5	176.7	117.4	140.9	143.0	132.6	154.4	148.0	256.2	179.2	295.7	121.3
1985 J	150.6	116.2	159.2	178.7	116.9	140.3	143.2	132.9		149.0	261.0	176.7	294.5	121.5
1985 J	149.9	115.0	159.7	179.1	116.5	139.9	144.8	131.0		148.0	251.9	178.4	294.1	121.6
1985 A	149.6	112.9	160.2	179.1	115.6	139.7	145.0	131.0	157.2	148.0	260.6	178.2	297.7	118.9
1985 S	150.2	112.6	160.9	180.0	115.2	138.9	145.2	131.2		149.0	272.1	181.1	295.9	121.7
1985 O	150.4	112.0	161.0	181.3	114.5	138.2	146.0	131.1		148.0	277.4	181.5	296.2	122.0
1985 N	151.0	112.4	161.0	182.0	114.6	138.3	145.8	131.8	158.3	148.0	285.8	183.3	301.2	122.8
1985 D	151.8	112.9	161.5	183.1	115.0	138.5	145.8	132.6		148.0	292.7	185.6	304.9	123.8
1986 J	152.7	114.0	161.5	184.3	115.3	139.7	145.9	133.3		149.0	297.6	193.1	308.6	124.0
1986 F	153.4	114.8	161.7	185.2	115.8	140.6	145.9	134.3	160.3	149.0	300.1	192.6	313.2	123.8
1986 M	153.8	114.5	162.0	185.6	115.7	141.6	146.1	134.9		150.0	305.2	192.0	316.5	124.1
1986 A	154.4	115.1	162.0	185.6	115.7	142.5	146.7	135.8		150.0	312.9	190.9	322.3	124.1
1986 M	154.8	115.4	162.1	186.7	115.5	142.1	146.8	136.7	162.9	151.0	312.6	191.2	318.4	124.5
1986 J	155.3	115.8	162.4	187.4	114.7	142.0	147.7	137.3		151.0	316.5	195.0	318.7	124.5
1986 J	154.8	114.9	163.1	187.2	114.3	142.0	147.5	135.8		151.0	313.2	199.6	317.7	125.7
1986 A	154.6	113.0	163.9	187.2	113.5	142.5	148.6	136.3	163.8	152.0	316.0	200.7	322.5	126.7
1986 S	155.1	112.6	164.7	188.1	113.5	142.6	148.6	136.1		152.0	325.8	205.4	322.1	126.9

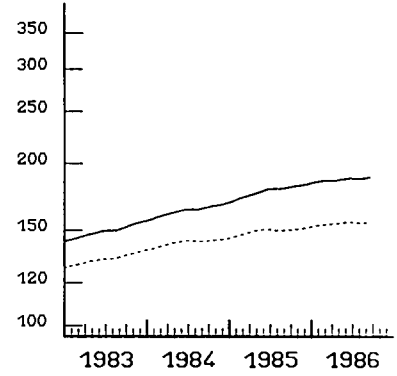
BR DEUTSCHLAND



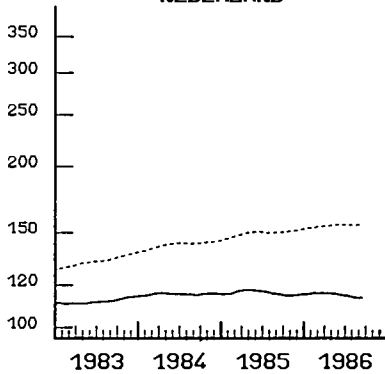
FRANCE



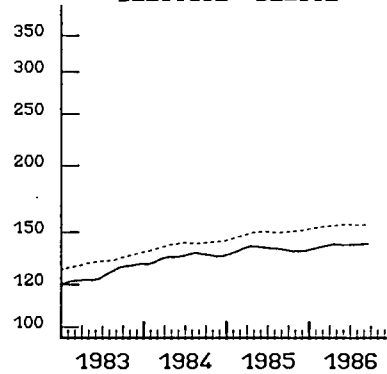
ITALIA



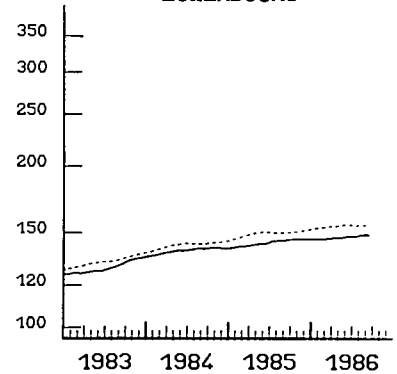
NEDERLAND



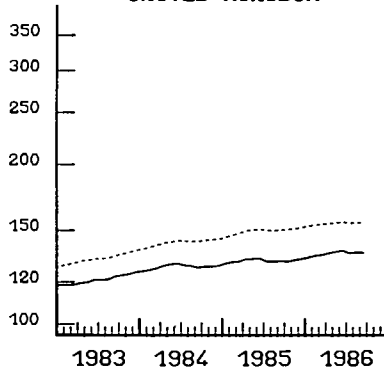
BELGIQUE BELGIE



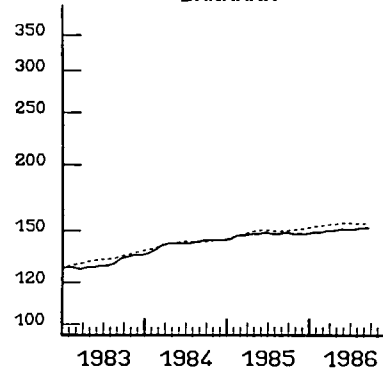
LUXEMBOURG



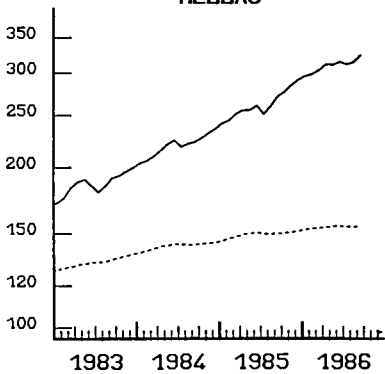
UNITED KINGDOM



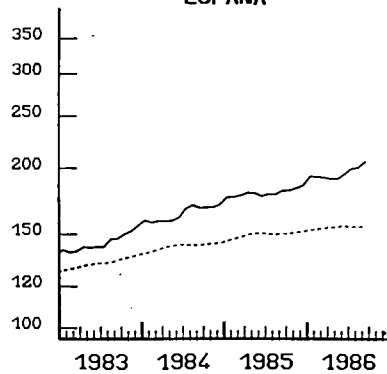
DANMARK



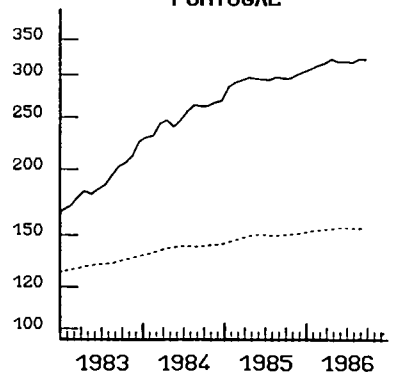
HELLAS



ESPANA



PORTUGAL



EINFACH-LOGARITHMISCHE SKALA

----- EUR 10
SEMI-LOGARITHMIC SCALE

ECHELLE SEMI-LOGARITHMIQUE

CONSUMER PRICES

MEAT (1)

PRIX A LA CONSOMMATION

VIANDES (1)

	EUR10	BR DEUTSCH LAND	FRANCE	ITALIA	NEDER- LAND	BELGIQUE BELGIE	LUXEM- BOURG	UNITED KINGDOM	IRELAND	DANMARK	ELLAS	ESPANA	PORTU- GAL	USA
	PRICE INDICES				1980 = 100				INDICES DE PRIX					
1982 Ø	125.9	112.3	129.6	138.5	114.2	109.7	124.5	118.1	132.4	126.3	171.0	130.0	127.2	105.4
1983 Ø	133.5	113.6	139.0	152.2	114.6	118.2	134.9	118.9	137.8	129.8	205.8	143.1	181.1	107.4
1984 Ø	140.0	112.6	147.3	162.2	113.6	124.0	139.5	123.5	144.7	142.0	234.1	163.8	224.4	107.7
1985 Ø	145.3	113.0	152.6	170.9	114.2	127.2	143.7	125.7	148.3	145.8	272.8	184.8	268.7	106.7
1984 J	137.5	113.1	144.6	159.2	113.2	120.4	138.0	121.5		136.0	218.9	156.3	204.8	107.1
1984 F	137.7	112.7	144.6	160.1	113.2	120.8	138.7	121.5	141.9	139.0	217.4	155.5	204.7	108.5
1984 M	138.2	112.7	145.1	160.7	113.6	121.1	138.8	122.1		140.0	220.0	155.9	212.3	108.0
1984 A	138.7	112.6	145.2	161.3	113.5	121.5	138.5	122.7		141.0	224.4	156.6	218.3	108.1
1984 M	139.2	112.4	145.7	161.4	113.1	121.9	138.8	124.2	146.4	142.0	228.7	158.0	217.3	107.7
1984 J	139.5	112.2	146.7	161.6	113.7	122.2	139.1	123.8		143.0	230.5	157.8	216.8	107.2
1984 J	140.3	112.5	147.9	161.8	114.1	127.1	139.2	123.8		143.0	233.6	163.5	222.5	107.4
1984 A	140.7	112.6	148.5	162.3	114.2	127.0	139.6	123.5	145.2	144.0	238.7	167.6	230.3	108.5
1984 S	141.4	112.7	149.5	163.3	114.1	127.3	139.9	123.8		144.0	243.6	170.5	232.9	107.7
1984 O	142.1	112.6	150.2	164.3	113.8	127.5	141.0	124.1		144.0	249.5	172.9	239.6	107.3
1984 N	142.2	112.6	149.7	165.0	113.2	125.4	141.1	125.0	145.3	144.0	251.4	175.4	246.9	106.9
1984 D	142.5	112.6	149.5	165.7	113.1	125.5	141.0	125.8		144.0	252.8	176.2	246.3	108.4
1985 J	142.8	112.6	149.7	166.8	113.6	125.7	141.5	125.5		144.0	255.0	177.9	255.7	108.8
1985 F	143.2	112.5	150.1	167.9	113.6	126.0	142.0	125.4	147.9	144.0	255.1	174.8	265.3	108.8
1985 M	143.4	112.4	150.2	168.5	113.4	126.4	142.6	125.7		145.0	255.0	171.5	261.9	108.3
1985 A	144.0	112.4	150.9	169.1	113.1	126.8	142.7	126.5		145.0	259.2	173.0	266.4	107.1
1985 M	144.6	112.4	152.0	169.6	113.7	127.1	142.9	126.9	148.4	145.0	260.7	172.8	267.9	105.9
1985 J	145.3	112.5	152.9	170.7	114.3	127.0	143.1	126.6		146.0	269.6	170.6	271.6	105.7
1985 J	145.6	112.6	153.5	171.2	114.7	127.3	143.6	125.4		146.0	274.7	176.7	274.8	105.6
1985 A	146.0	113.7	153.8	171.4	114.6	127.5	144.3	125.3	148.6	147.0	276.5	195.8	277.6	105.0
1985 S	146.5	113.7	154.3	172.5	115.2	127.7	145.0	125.3		147.0	279.1	196.9	272.9	104.7
1985 O	146.8	113.6	154.3	173.4	114.6	127.9	145.5	125.3		147.0	284.7	199.0	268.3	104.9
1985 N	147.4	113.6	154.3	174.1	114.4	128.2	145.5	125.0	148.3	147.0	300.6	204.1	271.9	106.9
1985 D	148.2	113.7	154.9	175.2	114.8	128.6	145.5	126.0		147.0	304.0	205.0	269.7	108.5
1986 J	148.6	113.7	155.0	176.5	114.8	129.0	145.7	126.2		147.0	305.9	209.3	272.4	109.1
1986 F	148.7	113.7	155.1	177.4	114.3	129.3	146.1	126.1	149.2	147.0	300.1	210.7	279.5	107.9
1986 M	148.9	113.4	155.2	178.1	113.9	129.5	146.7	126.5		146.0	302.1	209.1	282.6	107.6
1986 A	149.2	113.4	154.9	178.8	113.5	129.7	146.7	127.4		146.0	302.7	206.2	289.0	106.2
1986 M	149.5	113.1	155.0	179.3	113.5	129.7	146.7	128.2	151.0	146.0	305.1	206.6	291.3	105.9
1986 J	150.1	113.2	155.4	179.6	113.9	129.8	146.8	128.7		147.0	315.5	205.7	289.9	105.7
1986 J	150.3	113.1	155.9	180.1	114.3	129.8	146.8	127.9		146.0	318.6	194.1	292.7	:
1986 A	150.5	113.0	156.3	180.6	113.9	129.7	146.8	127.8	150.1	147.0	320.0	198.6	286.6	:
1986 S	151.0	113.1	157.0	181.8	113.8	129.8	146.7	127.5		147.0	321.9	202.2	283.8	:

1) INCLUDING FROZEN, CANNED
AND MEAT PRODUCTS.

1) Y COMPRIS VIANDE SURGEEE,
EN CONSERVE ET PRODUITS DE VIANDE.

B3

CONSUMER PRICES

DAIRY PRODUCTS, EGGS, OILS AND FATS

PRIX A LA CONSOMMATION

PRODUITS LAITIERS, OEUFS, HUILES, GRAISSES

	EUR10	BR DEUTSCH LAND	FRANCE	ITALIA	NEDER- LAND	BELGIQUE BELGIE	LUXEM- BOURG	UNITED KINGDOM	IRELAND	DANMARK	ELLAS	ESPANA	PORTU- GAL	USA
	PRICE INDICES				1980 = 100				INDICES DE PRIX					
1982 Ø	122.7	109.3	126.1	131.7	110.5	117.7	113.1	118.5	121.6	125.5	155.6	130.9	175.7	107.8
1983 Ø	132.2	111.6	136.0	150.2	111.8	130.2	123.7	121.6	134.1	131.3	184.7	144.3	222.3	109.8
1984 Ø	141.2	114.0	149.7	168.4	113.3	140.0	131.7	127.5	151.6	146.9	174.7	165.9	326.0	114.8
1985 Ø	149.3	113.1	156.3	183.7	113.4	142.2	133.2	133.4	160.7	158.4	216.3	183.7	380.5	112.5
1984 J	137.0	114.2	144.7	161.1	113.8	136.6	131.0	124.7		135.0	161.0	159.0	283.1	120.2
1984 F	137.9	114.6	146.0	163.1	114.1	137.4	131.0	124.6	143.9	136.0	162.9	159.6	291.2	120.8
1984 M	138.9	115.1	147.1	164.2	114.6	139.1	131.8	125.0		146.0	164.1	161.1	295.5	116.9
1984 A	139.7	115.3	148.2	165.6	114.0	139.4	132.3	125.9		146.0	164.6	162.8	295.9	118.7
1984 M	140.3	114.3	148.5	166.7	113.0	138.9	132.1	126.3	149.3	147.0	173.3	163.8	308.0	115.0
1984 J	141.0	113.5	149.1	167.9	112.8	139.0	132.0	128.8		147.0	174.6	164.4	325.8	111.5
1984 J	141.5	113.1	150.1	168.8	113.0	141.6	131.8	128.4		148.0	176.6	164.7	340.7	111.7
1984 A	142.1	112.9	151.0	169.5	113.2	142.1	132.0	128.5	156.6	150.0	179.4	166.7	348.2	111.7
1984 S	143.1	113.3	152.4	171.3	113.1	142.6	131.8	128.8		152.0	181.6	171.0	351.9	112.2
1984 O	143.9	113.7	153.4	173.1	113.2	142.7	131.6	129.1		152.0	183.8	171.2	353.7	112.5
1984 N	144.3	113.7	153.5	174.4	113.2	140.4	131.0	129.4	156.5	152.0	185.1	172.5	358.3	112.4
1984 D	144.5	113.8	152.1	175.5	112.0	140.7	131.8	130.2		152.0	189.2	173.9	359.7	114.0
1985 J	145.5	113.6	151.9	177.1	112.6	141.0	131.1	130.5		157.0	199.7	174.8	380.4	111.4
1985 F	146.3	113.6	152.7	178.8	113.1	141.1	131.1	130.3	159.2	158.0	204.3	176.1	385.8	112.4
1985 M	147.3	113.6	154.1	179.9	114.6	141.8	130.9	131.1		158.0	206.8	177.2	388.9	112.6
1985 A	148.4	113.7	155.1	181.0	114.2	142.0	131.4	134.0		159.0	209.0	178.8	386.5	112.1
1985 M	148.7	113.2	155.5	182.1	113.9	141.6	131.1	134.2	159.8	158.0	212.0	178.7	386.5	111.0
1985 J	149.3	112.9	155.8	183.8	114.0	142.1	130.6	134.1		159.0	215.0	176.1	385.4	110.8
1985 J	149.9	113.0	156.8	184.7	114.0	142.6	134.7	134.5		159.0	216.2	174.8	386.3	112.1
1985 A	150.5	113.0	157.9	185.3	113.8	142.7	135.1	135.0	162.4	159.0	218.7	189.6	389.9	112.2
1985 S	150.6	113.0	158.8	186.5	113.6	142.9	135.4	132.3		159.0	220.2	193.7	390.9	113.9
1985 O	151.2	112.7	158.7	187.6	112.2	142.6	135.5	134.8		159.0	223.2	193.8	390.9	113.6
1985 N	151.7	112.6	158.9	188.4	112.4	142.9	135.3	135.0	161.6	158.0	228.9	194.1	390.8	113.8
1985 D	152.8	112.8	159.2	189.0	112.8	143.2	136.0	135.5		158.0	241.9	196.6	404.0	113.8
1986 J	153.3	112.8	158.9	190.5	112.5	143.4	136.0	135.6		158.0	246.1	201.4	407.1	114.4
1986 F	154.0	112.7	159.3	191.3	112.5	143.5	135.5	137.3	166.4	158.0	249.8	201.6	408.2	113.4
1986 M	154.3	112.6	159.4	192.0	112.0	143.7	135.6	137.9		157.0	251.1	203.1	408.1	113.9
1986 A	154.4	112.2	158.8	192.9	111.8	143.3	136.5	137.8		157.0	253.8	203.5	405.4	113.6
1986 M	154.2	111.8	158.1	193.5	111.1	142.5	135.7	137.3	173.3	156.0	255.7	200.9	396.6	113.3
1986 J	154.1	111.1	157.5	193.6	110.7	142.1	138.5	137.0		156.0	258.9	200.0	397.1	113.2
1986 J	154.2	110.6	158.0	193.8	110.3	142.0	139.0	136.8		155.0	262.6	186.8	396.9	:
1986 A	154.3	110.3	158.4	194.0	110.2	142.0	139.3	136.8	173.4	156.0	263.5	188.9	397.7	:
1986 S	154.6	110.1	158.5	194.6	110.4	142.2	139.1	136.7		157.0	265.0	191.3	401.3	:

CONSUMER PRICES

FRUITS, VEGETABLES, POTATOES

PRIX A LA CONSOMMATION

FRUITS, LEGUMES, POMMES DE TERRE

	EUR10	BR DEUTSCH LAND	FRANCE	ITALIA	NEDER- LAND	BELGIQUE BELGIE	LUXEM- BOURG	UNITED KINGDOM	IRELAND	DANMARK	ELLAS	ESPANA	PORTU- GAL	USA
	PRICE INDICES				1980 = 100				INDICES DE PRIX					
1982 Ø	126.4	111.0	131.1	129.8	112.1	128.2	123.2	123.6	137.0	124.4	154.5	134.8	183.1	118.1
1983 Ø	135.6	112.1	142.5	144.6	109.0	137.9	126.7	128.0	154.4	132.3	173.5	148.4	190.4	118.4
1984 Ø	151.2	117.6	164.1	158.3	117.9	157.1	144.2	140.9	177.6	141.3	215.9	160.2	274.3	128.6
1985 Ø	159.8	110.7	174.6	179.4	117.4	155.2	146.1	140.1	153.2	139.8	243.3	181.5	268.6	132.0
1984 J	145.1	117.0	156.2	148.9	117.8	147.4	139.3	141.1		141.0	195.9	159.5	272.0	126.0
1984 F	148.3	124.7	158.0	150.8	117.6	151.9	141.5	142.8	181.3	146.0	201.8	155.0	278.1	130.1
1984 M	151.9	127.9	160.3	153.8	119.5	159.7	144.8	145.6		151.0	213.2	159.5	321.6	131.0
1984 A	154.6	127.7	162.0	156.5	121.1	164.8	146.8	149.6		150.0	220.4	154.7	340.3	127.8
1984 M	157.0	126.7	163.6	159.5	120.5	163.6	148.6	150.0	205.1	149.0	239.6	153.8	254.3	125.7
1984 J	159.4	127.9	164.9	162.6	119.0	164.8	147.9	149.4		140.0	255.4	163.5	256.7	128.9
1984 J	154.1	123.9	166.7	161.6	116.5	168.2	148.9	144.4		139.0	209.4	186.7	283.8	129.7
1984 A	150.6	112.6	167.8	160.1	116.1	162.3	145.6	139.4	171.4	137.0	206.0	183.0	282.1	132.8
1984 S	147.0	102.7	167.3	160.9	113.2	156.9	142.4	133.2		136.0	198.7	158.7	260.9	129.6
1984 O	148.1	104.6	167.5	160.9	116.4	152.5	141.8	133.4		137.0	208.2	153.2	253.2	129.0
1984 N	149.5	107.1	167.4	161.7	117.9	146.4	141.7	131.7	152.8	135.0	223.2	147.6	241.8	127.6
1984 D	149.5	107.8	167.0	162.8	118.9	147.2	141.3	130.6		134.0	219.2	147.8	247.1	125.5
1985 J	152.6	105.3	169.2	166.0	116.4	150.6	141.4	136.5		135.0	237.0	169.4	266.2	130.0
1985 F	156.9	115.0	171.6	170.1	117.8	159.1	142.4	139.7	156.1	139.0	236.9	180.1	277.3	135.0
1985 M	161.4	118.1	173.9	172.7	122.1	170.2	142.6	144.8		141.0	253.8	192.6	295.8	134.6
1985 A	165.3	130.5	175.3	176.2	124.8	172.8	144.3	145.8		143.0	252.9	195.1	300.8	135.0
1985 M	166.8	135.0	176.8	180.1	124.0	168.2	146.3	146.5	146.9	142.0	245.3	198.3	292.1	133.9
1985 J	167.3	127.9	177.5	183.8	120.6	162.3	146.4	148.5		146.0	253.4	189.7	271.8	133.3
1985 J	158.7	120.2	176.6	183.2	117.9	156.9	150.6	136.4		138.0	193.0	184.2	251.2	133.3
1985 A	155.4	100.7	175.4	181.6	113.6	152.9	148.4	135.1	152.8	139.0	213.4	168.1	244.0	132.2
1985 S	157.6	96.0	175.3	182.3	111.5	146.4	148.3	134.7		140.0	256.0	176.1	240.3	129.6
1985 O	158.1	90.8	174.8	185.0	111.2	141.2	147.8	135.3		139.0	268.3	173.7	256.4	128.5
1985 N	158.5	92.4	174.3	186.0	113.6	140.1	147.2	137.0	157.0	137.0	262.3	172.6	262.2	127.4
1985 D	158.7	96.2	174.7	185.4	114.7	142.1	147.2	140.6		139.0	247.8	177.9	264.7	131.3
1986 J	161.1	102.3	173.8	185.9	114.9	144.7	146.8	142.2		140.0	259.9	190.4	271.7	135.5
1986 F	162.0	105.9	172.4	184.8	114.1	148.1	145.9	144.5	159.6	137.0	265.9	186.1	277.5	130.0
1986 M	162.5	105.6	170.7	183.0	113.9	152.1	144.2	147.2		135.0	277.1	184.8	283.3	129.4
1986 A	165.3	114.7	169.4	181.7	112.1	153.2	142.1	147.4		135.0	300.3	179.3	299.6	133.5
1986 M	167.1	124.7	168.8	183.8	111.7	149.4	141.5	153.0	155.7	135.0	284.1	185.8	288.7	136.4
1986 J	170.4	139.0	169.8	185.9	109.7	147.1	141.3	155.4		138.0	280.1	200.9	286.0	135.8
1986 J	163.2	118.0	171.6	182.9	108.1	146.8	141.4	145.4		139.0	264.4	228.6	270.5	:
1986 A	160.3	106.4	174.2	180.8	106.8	151.0	147.7	147.8	162.4	144.0	249.3	219.4	295.0	:
1986 S	163.6	105.0	177.0	182.2	106.8	151.2	149.2	145.8		145.0	287.0	228.4	294.2	:

C

CONSUMER PRICES

DRINKS(HOME CONSUMPTION)AND TOBACCO

PRIX A LA CONSOMMATION

BOISSONS(CONSOMMATION A DOMICILE)ET TABAC

	EUR10	BR DEUTSCH LAND	FRANCE	ITALIA	NEDER- LAND	BELGIQUE BELGIE	LUXEM- BOURG	UNITED KINGDOM	IRELAND	DANMARK	ELLAS	ESPANA	PORTU- GAL	USA	
	PRICE INDICES								INDICES DE PRIX						
	1980 = 100														
1982	129.3	114.8	131.8	145.8	110.7	119.9	125.4	134.1	161.5	111.6	142.2	128.8	147.0	116.5	
1983	140.9	120.4	143.9	168.8	112.8	131.0	136.9	143.8	185.6	127.2	169.8	144.0	159.1	131.4	
1984	148.9	120.0	152.5	183.2	121.8	138.8	145.6	154.5	198.7	136.7	201.2	156.7	190.5	137.9	
1985	156.1	121.4	157.1	198.1	124.9	146.9	152.0	165.5	210.5	141.5	230.9	170.2	235.9	144.9	
1984	145.2	119.9	150.5	179.0	115.8	135.3	143.2	147.4		133.0	175.2	149.0	172.1	135.7	
1984	146.7	119.9	151.6	180.3	120.2	135.9	143.3	148.6	197.9	134.0	198.8	153.3	173.5	134.1	
1984	147.2	119.9	152.4	181.1	122.2	136.8	145.9	149.2		134.0	199.4	154.1	174.5	136.5	
1984	148.8	119.9	153.8	181.8	122.5	137.3	145.8	153.9		134.0	203.1	154.7	187.2	136.7	
1984	149.4	119.9	155.0	182.2	122.5	137.9	145.7	155.5	199.8	134.0	201.1	155.3	186.7	136.8	
1984	149.7	119.9	155.4	182.7	122.3	138.5	145.7	155.7		138.0	201.1	156.2	190.6	137.6	
1984	149.3	119.9	152.4	183.0	122.3	138.9	145.7	155.7		138.0	201.6	157.0	191.8	139.0	
1984	149.3	120.0	151.1	183.3	122.3	139.3	146.0	156.0	201.4	138.0	205.6	157.8	193.7	139.3	
1984	149.7	120.0	151.4	183.7	122.3	140.5	146.0	157.1		138.0	205.9	158.4	197.8	139.4	
1984	150.1	120.1	151.8	184.2	122.3	141.3	146.3	158.6		139.0	206.2	158.8	201.4	139.8	
1984	150.2	120.1	152.1	184.5	123.1	141.9	146.4	158.3	195.9	140.0	206.3	160.0	205.6	139.7	
1984	151.5	120.1	152.3	192.2	124.2	142.1	146.6	158.4		140.0	210.2	165.5	209.1	139.7	
1985	152.2	120.3	152.6	192.7	124.7	142.5	146.7	159.2		141.0	207.2	162.3	213.1	141.6	
1985	153.0	120.4	153.1	193.4	124.8	143.8	148.9	160.1	208.5	141.0	223.0	163.5	217.0	142.5	
1985	153.4	120.6	153.7	194.2	124.8	144.6	148.8	160.6		141.0	226.8	164.5	219.1	142.8	
1985	154.7	120.7	154.5	194.9	124.8	144.9	151.1	164.5		141.0	231.6	169.5	235.0	143.0	
1985	155.4	120.7	156.8	195.3	124.9	145.1	151.9	165.6	210.1	141.0	231.1	170.0	235.5	143.2	
1985	155.7	120.7	157.7	196.0	124.9	145.7	151.7	165.8		141.0	232.2	170.6	238.4	143.4	
1985	156.2	120.9	158.4	196.5	124.8	147.4	151.7	166.3		142.0	232.8	171.4	241.8	144.9	
1985	156.5	120.9	158.9	196.7	125.0	148.4	152.0	167.1	210.9	142.0	233.2	172.1	240.4	145.5	
1985	157.6	122.9	159.5	197.4	125.1	148.9	152.4	168.2		142.0	233.6	173.3	245.9	146.0	
1985	159.3	122.9	160.0	206.1	125.2	149.8	156.0	169.3		142.0	234.9	173.9	247.6	148.1	
1985	159.6	123.0	160.2	207.0	125.0	150.4	156.2	169.8	212.6	142.0	238.0	175.2	248.7	148.3	
1985	159.7	122.9	160.3	207.3	125.1	151.0	156.9	169.0		142.0	245.9	176.5	248.4	149.2	
1986	160.5	123.0	160.7	207.9	125.3	151.6	157.0	170.0		142.0	257.1	180.9	261.2	150.7	
1986	161.2	123.0	161.2	208.6	125.4	151.8	157.4	171.0	221.7	143.0	273.4	183.6	264.1	151.4	
1986	161.5	123.1	161.8	209.4	125.5	152.0	157.5	171.5		142.0	275.4	192.0	263.9	151.8	
1986	163.6	123.3	163.7	209.9	126.0	152.2	158.9	176.4		150.0	280.8	192.9	263.9	152.1	
1986	163.9	123.8	164.0	210.6	126.1	152.7	159.6	176.3	229.1	151.0	281.7	193.3	266.4	152.2	
1986	164.7	123.8	167.0	211.3	126.2	153.6	162.9	176.8		152.0	281.4	194.1	270.5	152.5	
1986	164.9	123.9	167.4	211.5	126.3	154.1	163.0	177.2		152.0	282.0	194.7	270.3	154.5	
1986	165.1	123.9	167.7	211.8	126.3	154.4	163.1	177.6	229.2	152.0	282.3	195.3	269.5	155.0	
1986	165.3	124.0	168.0	212.2	126.3	154.8	163.3	178.3		152.0	283.3	195.8	272.1	155.2	

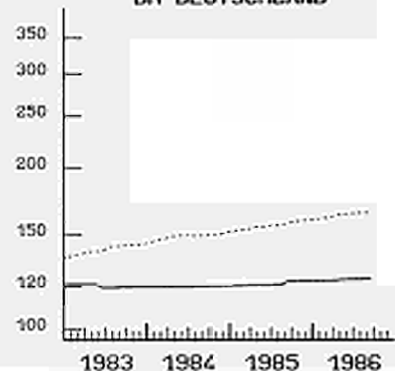
VERDRINKSELN EN
GETRANKEN, TABAK

BOISSONS ET
DRINKS, TOBACCO

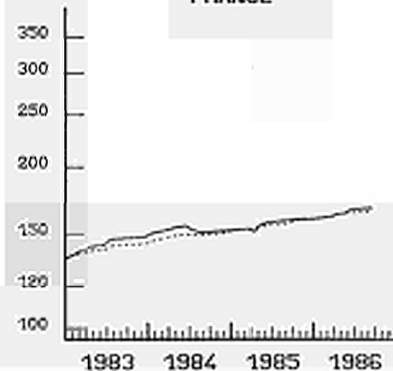
BOISSONS ET TABAC

1980 = 100

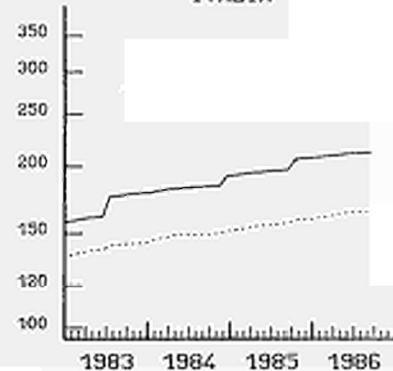
BR DEUTSCHLAND



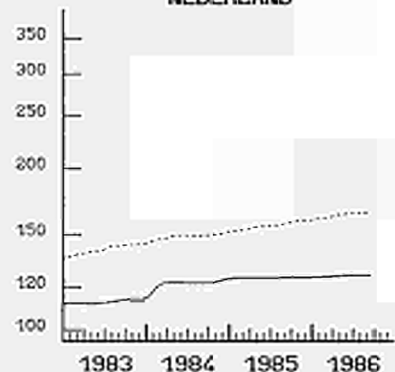
FRANCE



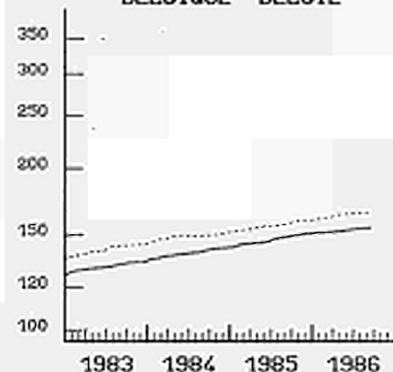
ITALIA



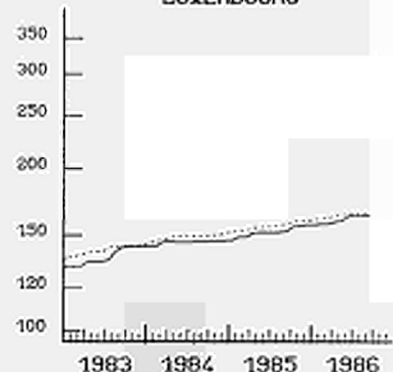
NEDERLAND



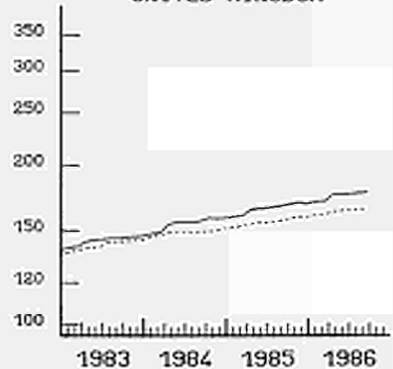
BELGIQUE BELGIE



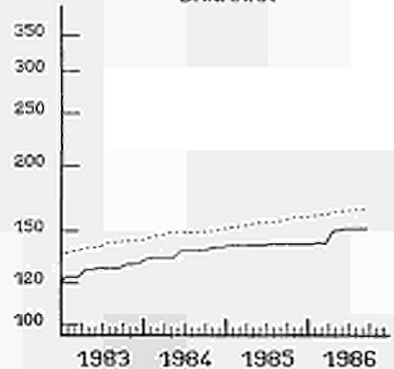
LUXEMBOURG



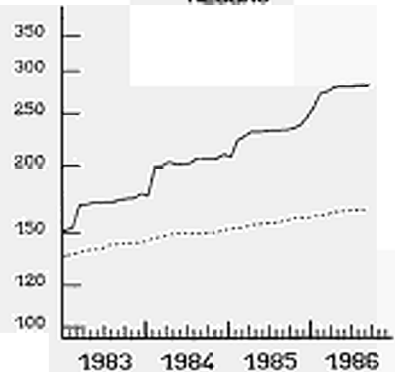
UNITED KINGDOM



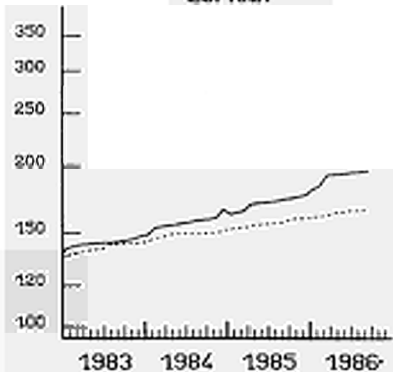
DANMARK



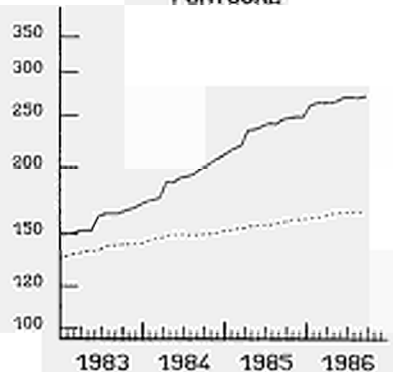
HELLAS



ESPANA



PORTUGAL



EINFACH-LOGARITHMISCHE SKALA

..... EUR 10
SERI-LOGARITHMIC SCALE

ECHELLE SERI-LOGARITHMIQUE

C1

CONSUMER PRICES

DRINKS(HOME CONSUMPTION)

PRIX A LA CONSOMMATION

BOISSONS(CONSOMMATION A DOMICILE)

	EUR10	BR DEUTSCH LAND	FRANCE	ITALIA	NEDER- LAND	BELGIQUE BELGIE	LUXEM- BOURG	UNITED KINGDOM	IRELAND	DANMARK	ELLAS	ESPANA	PORTU- GAL	USA
	PRICE INDICES				1980 = 100				INDICES DE PRIX					
1982 Ø	123.4	112.3	128.9	131.9	110.3	120.7	116.4	130.2	153.4	116.4	149.9	120.6	146.4	111.9
1983 Ø	132.7	114.6	140.7	150.1	109.7	130.5	126.6	140.0	171.8	128.2	170.9	133.8	152.6	116.2
1984 Ø	139.8	115.3	149.0	163.6	114.2	137.1	131.1	148.1	175.5	138.8	197.5	146.5	176.8	119.2
1985 Ø	147.3	116.4	156.9	175.7	115.1	143.7	136.1	164.4	171.1	142.8	231.3	160.7	219.6	123.3
1984 J	136.5	115.2	145.0	157.8	110.6	133.9	130.7	143.7		136.0	186.2	140.7	164.3	117.6
1984 F	137.4	115.2	145.6	159.2	114.4	134.5	130.8	144.8	175.5	137.0	188.9	142.1	166.1	118.0
1984 M	138.1	115.2	146.8	160.7	115.1	135.4	131.0	145.2		137.0	188.9	143.2	167.6	118.5
1984 A	138.9	115.2	147.8	162.1	114.9	135.3	130.9	147.3		137.0	191.3	144.1	169.1	118.8
1984 M	139.4	115.2	148.7	162.8	114.8	135.7	130.8	148.1	177.9	137.0	193.5	144.9	168.4	118.9
1984 J	139.8	115.2	149.3	163.8	114.5	136.4	130.7	148.2		139.0	192.3	146.2	173.5	119.4
1984 J	140.1	115.2	149.7	164.5	114.4	137.0	130.8	148.1		140.0	196.0	147.2	175.1	119.4
1984 A	140.5	115.3	150.2	165.0	114.4	137.5	131.2	148.6	179.6	140.0	200.8	147.9	177.7	119.7
1984 S	141.1	115.3	150.6	165.8	114.4	138.8	131.2	149.9		140.0	207.0	148.7	182.8	119.8
1984 O	141.6	115.4	151.1	166.6	114.1	139.7	131.6	151.7		141.0	207.0	149.3	187.4	120.3
1984 N	141.9	115.4	151.6	167.3	114.4	140.4	131.7	150.8	169.2	141.0	207.7	151.0	192.6	120.1
1984 D	142.2	115.5	151.9	168.2	114.1	140.6	131.9	151.0		141.0	209.9	153.0	197.2	120.2
1985 J	142.7	115.7	152.3	169.2	114.9	141.1	132.0	152.0		142.0	210.3	154.6	202.6	120.4
1985 F	143.4	115.9	153.1	170.6	115.0	141.5	132.2	152.7	169.5	142.0	211.2	156.3	207.7	121.2
1985 M	144.1	116.1	154.1	172.0	115.1	141.9	132.1	153.1		142.0	214.4	157.4	210.2	121.6
1985 A	145.2	116.2	155.2	173.4	115.1	142.2	135.1	156.3		143.0	221.0	158.0	214.1	121.7
1985 M	149.1	116.3	155.8	174.2	115.2	142.5	136.2	184.9	171.5	143.0	226.6	158.7	214.7	122.2
1985 J	149.8	116.4	156.6	175.6	115.1	143.2	135.8	185.7		143.0	232.1	159.6	218.6	122.3
1985 J	150.3	116.5	157.5	176.5	114.9	144.4	138.0	186.0		143.0	235.9	160.6	223.0	122.3
1985 A	147.5	116.7	158.4	177.0	115.1	144.9	136.3	158.7	172.4	143.0	237.3	161.6	221.1	122.9
1985 S	148.1	116.6	159.3	178.2	115.4	145.4	136.8	160.2		143.0	238.8	163.4	228.4	123.1
1985 O	148.8	116.6	160.0	179.4	115.3	145.7	139.0	161.8		143.0	242.4	164.4	230.6	126.8
1985 N	149.1	116.8	160.3	180.5	115.0	145.9	139.3	160.8	171.0	143.0	250.7	166.2	232.1	127.2
1985 D	149.4	116.6	160.4	181.7	115.1	146.1	140.1	160.9		143.0	254.4	167.9	231.7	127.5
1986 J	150.0	116.7	161.0	182.5	115.3	146.6	140.2	161.9		143.0	259.4	174.4	236.5	127.5
1986 F	150.7	116.8	161.8	183.9	115.4	146.8	140.8	162.7	174.9	143.0	268.4	178.4	240.3	127.9
1986 M	151.5	117.0	162.8	185.2	115.6	147.0	140.9	162.9		143.0	283.4	180.6	240.0	128.2
1986 A	152.3	117.3	163.5	186.2	116.3	147.2	142.7	163.4		147.0	287.7	181.9	239.7	128.5
1986 M	152.8	117.4	163.9	187.6	116.4	147.3	143.7	163.8	181.5	149.0	290.3	182.2	242.9	128.5
1986 J	153.4	117.5	164.4	188.9	116.6	147.8	144.2	164.0		150.0	295.4	183.4	248.2	128.9
1986 J	153.9	117.6	164.8	189.4	116.8	148.2	144.3	164.6		151.0	302.1	184.3	247.9	129.0
1986 A	154.0	117.7	165.2	188.9	116.8	148.7	144.4	165.2	181.7	151.0	303.3	185.3	246.7	128.9
1986 S	154.7	117.7	165.8	190.7	116.7	149.0	144.7	166.0		151.0	306.1	185.9	250.1	129.0

CONSUMER PRICES

TOBACCO

PRIX A LA CONSOMMATION

TABACS

	EUR10	BR DEUTSCH LAND	FRANCE	ITALIA	NEDER- LAND	BELGIQUE BELGIE	LUXEM- BOURG	UNITED KINGDOM	IRELAND	DANMARK	ELLAS	ESPANA	PORTU- GAL	USA
		PRICE INDICES				1980 = 100			INDICES DE PRIX					
1982 Ø	136.6	118.9	137.5	160.6	111.3	117.7	130.6	142.5	165.9	106.2	138.7	151.0	148.3	120.2
1983 Ø	152.3	129.6	150.2	188.7	117.6	132.4	143.2	152.0	195.1	126.2	168.9	169.3	179.8	143.6
1984 Ø	163.2	127.5	159.5	204.1	133.9	143.0	156.8	168.6	218.0	133.9	208.3	180.4	232.7	152.7
1985 Ø	171.3	129.5	157.6	222.0	140.4	154.6	166.1	176.5	247.0	140.7	235.6	193.8	287.1	162.1
1984 J	158.9	127.5	161.6	202.9	124.1	138.7	149.6	155.4		130.0	173.2	169.4	196.3	150.2
1984 F	160.7	127.5	163.8	202.9	129.3	139.4	149.6	156.9	216.3	130.0	211.5	180.7	196.3	146.9
1984 M	161.2	127.5	163.8	202.9	133.4	140.1	158.3	157.7		130.0	211.5	180.7	196.3	150.8
1984 A	163.8	127.5	165.8	202.9	134.6	142.3	158.3	168.2		130.0	211.5	180.7	243.8	151.0
1984 M	164.9	127.5	167.8	202.9	134.6	143.1	158.3	171.7	217.6	130.0	211.5	180.7	243.8	151.0
1984 J	165.3	127.4	167.8	202.9	134.6	143.5	158.3	172.7		136.0	211.5	180.7	243.8	152.1
1984 J	163.6	127.5	157.7	202.9	134.6	143.6	158.3	172.4		136.0	211.5	181.2	243.8	154.6
1984 A	162.8	127.5	153.1	202.9	134.6	143.8	158.3	172.2	219.1	136.0	211.5	182.1	244.9	154.9
1984 S	163.0	127.5	153.1	202.9	134.6	144.6	158.3	172.7		136.0	211.5	182.1	245.3	155.0
1984 O	163.3	127.5	153.1	202.9	135.1	145.2	158.3	173.7		137.0	211.5	182.1	246.0	155.3
1984 N	163.6	127.5	153.1	202.9	136.8	145.5	158.3	174.8	219.0	138.0	211.5	182.2	246.0	155.3
1984 D	167.4	127.5	153.1	217.8	140.1	145.7	158.3	174.6		138.0	211.5	182.2	246.0	155.3
1985 J	167.8	127.6	153.1	217.8	140.1	145.8	158.3	175.1		140.0	211.5	181.3	246.0	158.4
1985 F	168.9	127.6	153.1	217.8	140.1	149.4	165.5	176.9	244.6	140.0	237.8	181.3	246.0	159.5
1985 M	169.2	127.8	153.1	217.8	140.1	151.1	165.5	177.4		140.0	237.8	182.2	246.9	159.8
1985 A	170.3	127.8	153.1	217.8	140.1	151.5	165.5	183.0		140.0	237.8	197.8	300.7	159.9
1985 M	166.0	127.8	158.8	217.8	140.1	151.5	165.5	157.1	245.8	140.0	237.8	197.8	300.7	160.0
1985 J	166.2	127.5	160.0	217.8	140.4	151.8	165.5	157.0		140.0	237.8	197.8	300.7	160.3
1985 J	166.5	127.8	160.0	217.8	140.4	154.9	159.8	157.6		140.0	237.8	197.9	300.7	162.9
1985 A	172.3	127.8	160.0	217.8	140.4	157.0	165.5	185.9	246.4	140.0	237.8	197.9	300.7	163.6
1985 S	173.6	133.0	160.0	217.8	140.4	157.7	165.5	186.1		142.0	237.8	197.9	300.7	164.3
1985 O	177.8	133.0	160.0	234.6	140.8	159.7	172.3	186.2		142.0	237.8	197.9	300.7	165.1
1985 N	178.2	133.0	160.0	234.6	140.8	161.4	172.3	187.7	251.4	142.0	237.8	197.9	300.7	165.2
1985 D	178.3	133.0	160.0	234.6	140.8	163.1	172.3	187.8		142.0	237.8	198.4	300.7	166.5
1986 J	179.1	133.0	160.0	235.1	141.1	163.9	172.3	188.1		142.0	256.2	198.4	338.8	169.2
1986 F	179.9	133.0	160.0	235.1	141.1	164.1	172.3	189.5	265.8	142.0	281.5	198.4	338.8	170.1
1986 M	180.2	133.0	160.0	235.1	141.1	164.3	172.3	190.7		142.0	281.5	220.4	338.8	170.6
1986 A	183.2	133.0	164.1	235.1	141.3	164.7	172.3	200.2		154.0	281.5	220.4	339.6	171.0
1986 M	184.4	134.0	164.1	235.1	141.3	165.9	172.3	204.9	273.8	154.0	281.5	220.9	340.2	171.0
1986 J	186.0	134.0	171.8	235.1	141.3	167.9	182.4	205.9		154.0	281.5	220.9	340.2	171.3
1986 J	186.1	134.0	172.3	235.1	141.3	168.3	182.4	205.8		154.0	281.5	220.9	340.4	174.9
1986 A	186.1	134.0	172.3	235.1	141.3	168.4	182.4	206.0	273.8	154.0	281.5	220.9	340.9	175.8
1986 S	186.2	134.0	172.3	235.1	141.3	168.8	182.4	206.2		154.0	281.5	220.9	340.9	176.1

D

CONSUMER PRICES

CLOTHING AND FOOTWEAR(INCL. REPAIRS)

PRIX A LA CONSOMMATION

HABILLEMENT ET CHAUSSURES(Y COMPRIS REPARATIONS)

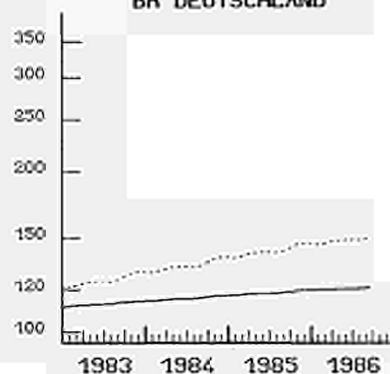
	EUR10	BR DEUTSCH LAND	FRANCE	ITALIA	NEDER- LAND	BELGIQUE BELGIE	LUXEM- BOURG	UNITED KINGDOM	IRELAND	DANMARK	ELLAS	ESPANA	PORTU- GAL	USA
	PRICE INDICES				1980 = 100				INDICES DE PRIX					
1982 Ø	116.8	109.8	120.2	135.9	107.9	110.0	112.8	102.5	126.1	112.0	196.9	128.2	139.4	107.5
1983 Ø	125.0	113.0	132.5	154.3	108.9	116.7	120.0	104.5	132.2	117.6	246.8	143.4	167.0	110.2
1984 Ø	132.9	115.7	145.9	171.9	110.9	123.7	126.0	104.5	142.2	125.8	239.6	159.7	207.7	112.2
1985 Ø	141.5	118.4	157.9	190.4	115.3	132.6	132.1	108.5	151.1	134.3	292.5	174.6	249.6	115.6
1984 J	128.9	114.5	140.0	164.7	104.5	120.3	123.7	102.4		117.0	223.6	152.5	184.0	110.1
1984 F	129.6	114.6	140.8	165.7	107.1	121.1	123.9	103.6	135.7	123.0	211.9	153.2	187.2	110.0
1984 M	130.6	114.9	142.4	167.1	110.5	121.9	124.1	103.7		124.0	223.9	154.9	191.3	111.5
1984 A	131.7	115.1	143.9	169.0	112.8	122.4	125.2	104.0		125.0	228.1	156.7	194.9	111.7
1984 M	132.3	115.5	145.0	169.8	112.7	122.7	125.9	104.6	142.0	125.0	229.3	157.8	197.1	111.5
1984 J	132.4	115.5	145.6	170.3	111.5	123.2	126.1	103.9		125.0	241.0	158.5	199.6	110.7
1984 J	132.1	115.5	146.1	170.7	102.7	123.4	126.1	104.2		120.0	239.4	159.1	200.5	110.2
1984 A	132.2	115.7	146.5	170.8	103.1	123.5	126.2	104.8	144.0	124.0	225.4	159.4	202.2	112.2
1984 S	134.1	116.2	147.6	173.5	111.1	124.8	126.4	105.5		130.0	241.3	161.6	206.4	114.5
1984 O	136.3	116.6	149.5	178.3	118.4	125.7	127.4	105.3		132.0	268.6	165.6	213.2	115.3
1984 N	137.4	117.0	151.5	180.7	119.2	127.2	128.5	105.5	147.0	133.0	270.6	167.6	222.3	115.0
1984 D	137.8	117.0	152.4	182.0	117.1	127.9	128.8	106.4		132.0	271.9	169.4	227.6	113.9
1985 J	137.5	117.2	152.9	182.5	109.6	128.2	128.8	105.8		127.0	272.0	170.4	229.5	112.0
1985 F	137.7	117.4	153.6	183.5	111.3	128.7	129.0	105.3	146.4	131.0	253.5	171.3	232.7	113.1
1985 M	139.4	117.8	154.7	185.3	115.1	130.0	129.1	107.6		134.0	273.6	172.5	236.2	115.1
1985 A	140.4	118.0	155.8	187.8	117.3	131.1	130.5	107.9		135.0	275.4	174.6	239.8	115.4
1985 M	140.8	118.1	156.8	188.7	117.4	131.9	131.7	108.0	151.4	135.0	278.8	175.7	243.7	115.1
1985 J	141.1	118.1	157.5	189.4	116.5	132.5	132.3	107.6		135.0	291.1	176.3	246.2	114.7
1985 J	140.6	118.1	157.9	189.8	107.0	132.7	132.3	107.8		128.0	289.9	176.6	247.7	115.1
1985 A	140.9	118.3	158.3	190.0	108.5	133.0	132.4	108.7	151.6	129.0	270.5	176.9	247.5	115.1
1985 S	142.4	118.8	156.6	192.3	115.8	133.8	132.4	110.1		139.0	294.7	179.7	252.4	117.5
1985 O	145.3	119.1	161.3	196.7	122.5	135.2	134.4	111.0		140.0	336.0	182.0	263.8	118.3
1985 N	146.2	119.7	162.9	198.8	122.7	136.5	135.9	111.3	155.0	140.0	336.9	184.8	274.0	118.4
1985 D	146.3	119.7	163.7	199.6	119.4	137.3	136.5	111.0		139.0	338.2	186.2	281.7	117.2
1986 J	145.4	119.8	164.1	199.5	111.9	137.6	136.5	109.6		130.0	335.1	187.5	285.1	114.9
1986 F	145.9	120.1	164.5	200.5	114.4	137.9	136.6	109.9	154.8	138.0	309.7	188.7	288.0	114.4
1986 M	147.1	120.2	165.3	202.2	119.1	139.1	137.2	110.1		143.0	343.3	191.0	293.7	115.7
1986 A	148.0	120.3	166.5	203.7	122.0	140.2	138.9	110.7		144.0	346.7	192.6	299.2	116.2
1986 M	148.3	120.5	167.4	204.9	122.2	135.3	140.0	110.9	156.1	144.0	347.8	193.4	302.0	115.7
1986 J	148.7	120.5	167.9	205.6	118.8	141.8	140.0	110.7		143.0	370.0	194.4	304.1	114.6
1986 J	148.1	120.6	168.3	206.0	110.5	142.0	140.0	110.4		135.0	358.3	194.8	304.4	113.9
1986 A	148.7	120.7	168.6	206.2	112.5	142.5	140.0	111.8	156.3	139.0	348.2	195.1	304.9	116.0
1986 S	150.2	121.0	169.5	207.5	118.5	144.0	140.2	112.7		151.0	371.7	197.3	314.0	118.9

VERBRAUCHERPREISE
BEKLEIDUNG, SCHUHE

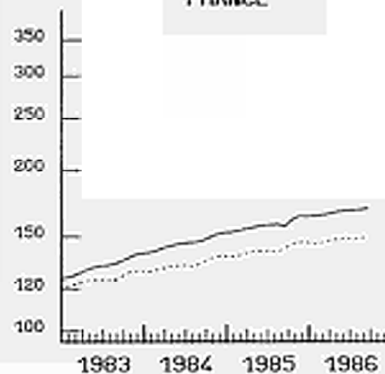
CONSUMER PRICES
CLOTHING, FOOTWEAR
1980 = 100

PIRIX A LA CONSOMMATION
HABILLEMENT, CHAUSSURES

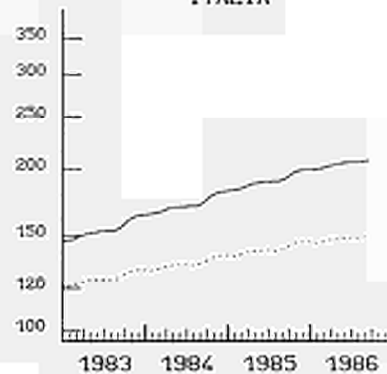
BR DEUTSCHLAND



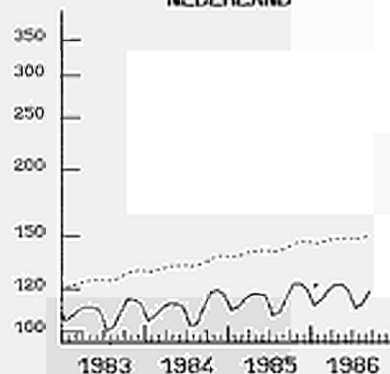
FRANCE



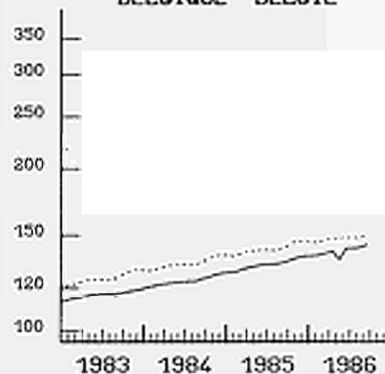
ITALIA



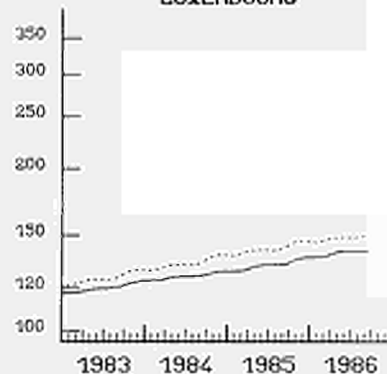
NEDERLAND



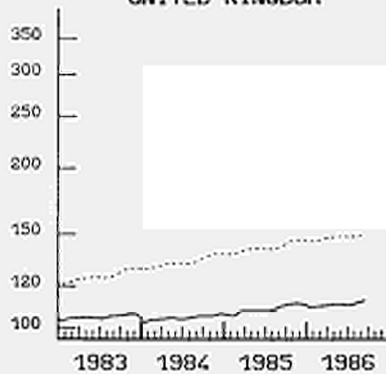
BELGIQUE BELGIE



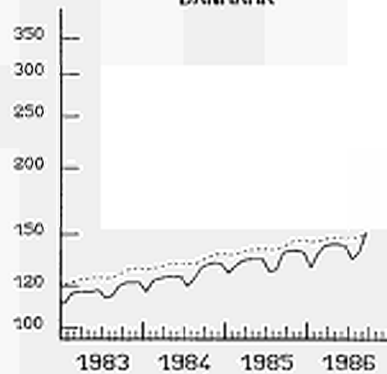
LUXEMBOURG



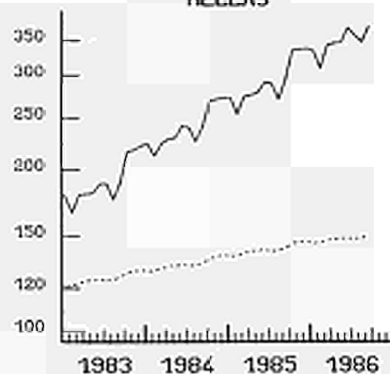
UNITED KINGDOM



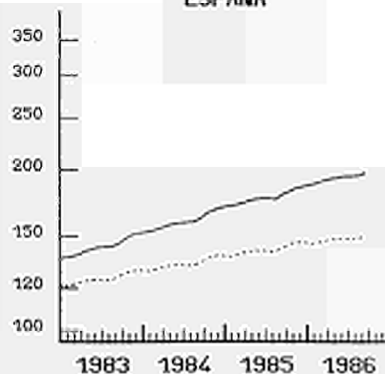
DANMARK



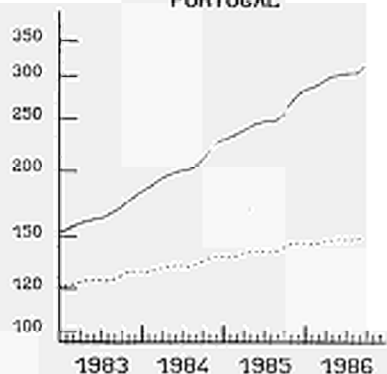
HELLAS



ESPANA



PORTUGAL



EINFACH-LOGARITHMISCHE SKALA

..... EUR 10
SEMI-LOGARITHMIC SCALE

ECHELLE SEMI-LOGARITHMIQUE

D1

CONSUMER PRICES

CLOTHING(INCL. REPAIRS)

PRIX A LA CONSOMMATION

HABILLEMENT(Y COMPRIS REPARATIONS)

	EUR10	BR DEUTSCH LAND	FRANCE	ITALIA	NEDER- LAND	BELGIQUE BELGIE	LUXEM- BOURG	UNITED KINGDOM	IRELAND	DANMARK	ELLAS	ESPANA	PORTU- GAL	USA
	PRICE INDICES				1980 = 100				INDICES DE PRIX					
1982 Ø	116.4	109.9	120.3	137.2	107.9	108.6	111.3	102.9	126.3	111.8	156.7	129.0	143.3	105.5
1983 Ø	124.8	113.1	132.8	155.6	109.7	115.2	117.9	105.2	132.4	117.8	195.1	144.4	171.9	109.0
1984 Ø	133.0	115.5	146.5	173.6	112.1	125.2	123.8	104.9	143.4	126.7	240.7	160.6	210.2	109.2
1985 Ø	144.9	117.9	158.8	192.4	116.7	131.8	130.2	124.4	152.2	135.5	294.1	178.0	260.4	112.8
1984 J	128.7	114.4	140.3	166.3	105.2	118.8	121.4	102.8		116.0	225.7	153.5	191.5	107.1
1984 F	129.2	114.5	141.2	167.5	108.1	119.7	121.7	103.8	135.5	124.0	212.1	154.3	194.7	106.8
1984 M	130.5	114.8	142.9	168.9	111.6	120.4	121.9	103.9		125.0	226.3	156.1	199.3	108.6
1984 A	131.5	114.9	144.5	170.7	114.3	120.9	121.8	104.3		126.0	228.7	157.8	202.9	108.8
1984 M	132.1	115.4	145.6	171.4	114.1	121.2	123.8	105.0	143.4	126.0	230.0	158.7	205.2	108.3
1984 J	132.4	115.4	146.2	171.9	112.7	121.8	124.0	104.1		126.0	241.8	159.4	206.9	107.1
1984 J	132.5	115.4	147.7	172.2	103.6	131.2	124.0	104.7		120.0	240.4	159.9	207.7	106.6
1984 A	132.4	115.5	147.2	172.3	103.9	131.9	124.1	105.2	145.5	125.0	226.8	160.2	209.1	109.1
1984 S	134.4	115.9	148.2	175.1	112.8	132.1	124.4	106.2		131.0	242.3	162.3	214.1	111.9
1984 O	136.8	116.2	150.1	180.1	120.1	132.4	125.3	105.9		134.0	269.4	166.4	221.5	112.7
1984 N	137.7	116.6	152.2	182.7	120.8	125.9	126.7	106.1	149.1	134.0	272.2	168.2	231.8	112.2
1984 D	138.1	116.7	152.3	183.9	118.6	126.8	127.1	107.2		133.0	273.3	170.0	237.8	110.8
1985 J	137.8	116.8	153.7	184.5	110.7	127.1	127.1	106.6		127.0	274.0	170.9	239.8	108.4
1985 F	137.7	117.0	154.4	185.6	112.6	127.7	127.3	105.8	148.1	132.0	252.8	171.8	243.0	109.5
1985 M	139.8	117.4	155.6	187.4	116.6	129.0	127.5	108.5		135.0	275.1	173.1	246.3	111.8
1985 A	140.8	117.5	156.8	189.7	119.1	130.2	128.6	108.8		137.0	276.2	175.3	249.8	112.2
1985 M	141.2	117.7	157.5	190.6	119.0	131.2	129.7	109.0	152.3	137.0	279.2	176.5	253.6	111.6
1985 J	141.7	117.7	158.3	191.4	117.8	131.9	130.3	108.5		137.0	291.7	177.1	256.4	111.0
1985 J	141.2	117.7	158.8	191.8	107.8	132.1	130.3	108.7		128.0	290.6	177.4	257.8	109.7
1985 A	141.1	117.8	159.3	191.9	109.6	132.4	130.4	109.4	152.5	129.0	270.8	177.7	257.6	111.6
1985 S	143.6	118.5	160.6	194.3	117.7	133.2	130.4	111.0		141.0	295.8	180.6	262.7	116.4
1985 O	157.5	118.7	162.3	198.8	124.2	134.6	132.3	172.4		141.0	339.1	182.7	275.4	117.2
1985 N	158.5	119.2	164.0	201.0	124.5	135.9	133.9	172.2	155.9	142.0	340.0	185.5	286.5	118.3
1985 D	158.6	119.2	164.7	201.8	121.0	136.8	134.3	171.9		140.0	344.1	186.9	295.6	115.7
1986 J	146.6	119.2	165.2	201.3	113.3	137.2	134.4	110.4		131.0	338.3	188.3	299.2	112.9
1986 F	146.5	119.6	165.7	202.2	116.0	137.5	134.4	110.3	155.4	140.0	309.4	189.6	302.6	112.3
1986 M	148.6	119.7	166.6	203.9	121.0	138.7	135.3	111.6		145.0	345.3	192.0	308.4	113.7
1986 A	149.5	119.8	167.9	205.5	124.2	140.0	137.1	111.5		147.0	349.4	193.7	314.6	114.2
1986 M	149.9	120.0	168.7	206.4	124.5	140.9	138.1	111.3	156.8	146.0	350.6	194.3	317.8	113.6
1986 J	150.4	120.1	169.2	207.0	120.6	141.6	138.2	111.1		145.0	372.1	195.4	319.7	113.2
1986 J	149.8	120.8	169.5	207.4	112.4	141.8	138.2	110.9		135.0	360.2	195.9	319.9	:
1986 A	149.9	120.2	169.9	207.6	114.3	142.3	138.2	112.3	157.2	140.0	349.6	196.3	320.5	:
1986 S	151.8	120.5	170.8	208.8	120.9	144.0	138.5	113.3		154.0	373.3	198.7	330.8	:

E

CONSUMER PRICES

RENT, HEATING AND LIGHTING (1)

PRIX A LA CONSOMMATION

LOYERS, CHAUFFAGE ET ECLAIRAGE (1) (2)

	EUR10	BR DEUTSCH LAND	FRANCE	ITALIA	NEDER- LAND	BELGIQUE BELGIE	LUXEM- BOURG	UNITED KINGDOM	IRELAND	DANMARK	ELLAS	ESPANA	PORTU- GAL	USA
	PRICE INDICES				1980 = 100				INDICES DE PRIX					
1982 Ø	131.4	114.6	133.1	143.2	121.3	128.8	125.4	144.3	140.6	128.1	150.5	133.7	154.0	119.5
1983 Ø	142.6	118.3	147.0	170.1	128.4	135.6	139.5	155.1	149.7	135.5	171.9	146.7	213.1	122.7
1984 Ø	152.8	122.7	158.6	198.8	134.3	144.2	144.9	162.3	160.9	142.1	196.5	160.0	293.6	127.8
1985 Ø	161.5	126.8	169.2	213.3	139.0	150.6	151.6	172.6	174.4	148.8	230.0	170.2	348.6	133.0
1984 J	148.9	121.3	152.9	193.6	132.6	141.9	141.8	157.0		140.0	179.0	156.2	246.2	125.1
1984 F	149.9	121.6	154.9	195.0	132.6	143.6	145.2	157.5	158.0	140.0	184.2	157.3	261.2	125.7
1984 M	150.3	121.3	156.5	196.1	132.7	142.5	143.3	157.7		139.0	191.4	157.8	288.1	125.9
1984 A	152.2	121.7	157.4	198.7	132.8	143.0	143.7	163.9		139.0	192.8	159.4	288.1	126.6
1984 M	152.2	121.8	157.4	198.2	132.8	143.5	143.8	163.1	159.1	142.0	193.7	159.9	288.1	127.1
1984 J	152.5	122.2	157.7	198.0	132.8	144.0	142.6	163.4		143.0	194.5	160.4	288.1	127.7
1984 J	153.1	122.3	158.9	198.6	135.7	143.2	144.1	163.6		142.0	199.4	160.7	308.1	128.4
1984 A	153.5	122.6	159.6	199.2	135.7	143.6	144.4	163.7	160.1	142.0	202.3	160.9	310.9	129.0
1984 S	154.0	123.4	160.0	199.3	135.7	145.1	144.6	163.7		143.0	204.4	161.2	310.9	129.7
1984 O	155.5	124.7	162.2	203.0	135.9	146.5	148.4	164.1		144.0	204.8	161.6	310.9	129.6
1984 N	155.9	124.7	162.9	203.1	135.9	146.9	148.3	164.6	166.3	146.0	205.3	162.0	310.9	129.5
1984 D	156.0	124.9	163.0	202.7	135.9	146.9	148.2	165.3		145.0	205.9	162.3	310.9	129.6
1985 J	157.7	125.9	165.3	206.7	137.4	149.1	148.5	165.4		146.0	217.0	165.7	323.5	129.9
1985 F	158.7	126.6	166.9	208.9	137.5	151.5	151.0	165.6	171.4	147.0	219.7	167.6	332.7	130.5
1985 M	159.9	127.3	168.6	212.2	137.7	152.7	154.7	166.1		148.0	220.5	168.5	350.2	130.9
1985 A	161.8	126.6	170.5	214.3	137.6	151.2	157.1	173.2		148.0	221.7	169.3	350.9	131.4
1985 M	161.6	126.2	170.1	213.3	137.6	150.0	152.5	173.7	176.1	150.0	223.5	169.7	350.9	132.4
1985 J	161.3	126.0	169.3	212.2	137.6	149.6	152.5	174.6		149.0	224.0	170.3	350.9	133.1
1985 J	161.9	126.3	169.9	212.2	140.5	150.0	153.2	174.9		149.0	225.6	170.8	350.9	133.6
1985 A	161.8	126.6	169.4	211.9	140.5	149.9	147.4	174.7	175.3	148.0	231.5	171.0	350.9	135.6
1985 S	162.4	127.5	169.0	212.9	140.5	151.4	147.5	175.4		149.0	237.2	171.6	350.9	134.4
1985 O	163.2	127.3	170.3	217.7	140.5	150.9	151.7	175.5		150.0	237.8	172.2	350.9	134.6
1985 N	163.8	127.8	170.5	218.8	140.2	151.5	151.8	176.0	175.0	151.0	244.6	172.5	356.8	134.9
1985 D	163.6	127.2	170.1	219.1	140.1	149.7	152.0	176.4		151.0	256.3	172.8	363.9	135.2
1986 J	163.6	126.5	170.0	220.2	140.7	149.0	148.3	176.4		151.0	268.8	176.7	381.7	135.5
1986 F	162.3	125.6	167.7	216.6	140.5	148.2	143.2	176.5	177.4	149.0	270.0	177.8	381.7	135.4
1986 M	162.3	125.4	168.3	216.0	140.1	148.8	137.4	176.5		149.0	268.4	178.4	381.9	135.6
1986 A	163.9	124.9	168.5	216.0	140.1	144.7	133.4	185.1		156.0	271.2	179.1	382.2	136.0
1986 M	163.2	123.9	167.9	216.0	139.7	142.2	130.7	184.5	173.8	158.0	272.1	180.0	368.8	136.2
1986 J	162.5	123.2	166.6	214.7	139.5	141.1	125.5	184.6		156.0	273.9	180.3	368.8	137.2
1986 J	162.2	122.1	169.8	211.9	138.0	139.2	119.7	184.7		154.0	274.7	180.7	368.8	137.3
1986 A	162.9	122.6	171.8	211.9	138.1	139.6	113.7	184.8	171.6	155.0	279.5	180.9	368.8	137.7
1986 S	163.3	122.5	173.2	212.1	137.6	140.0	113.9	185.0		156.0	285.4	181.3	368.8	138.2

- 1) Excluding rents for Luxembourg and Portugal
- 2) Imputed rent of owner occupied dwellings not covered for Ireland

- 1) Sans loyers pour le Luxembourg et le Portugal
- 2) Ne couvre pas les loyers fictifs des habitations occupées par le propriétaire pour l'Irlande

VERBRAUCHSPREISE
MIETE, HEIZUNG, BELEUCHTUNG

CONSUMER PRICES
RENT, FUEL, POWER

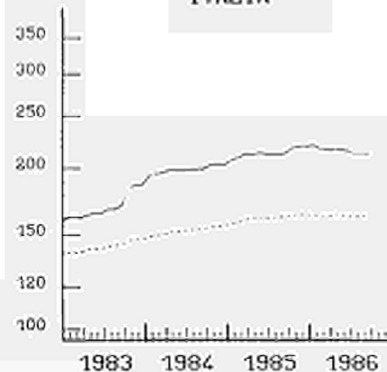
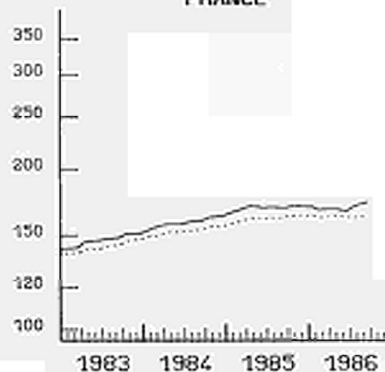
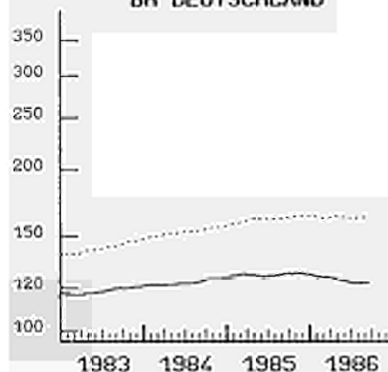
PRIX A LA CONSOMMATION
LOGEMENT, CHAUFFAGE, ECLAIRAGE

1980 = 100

BR DEUTSCHLAND

FRANCE

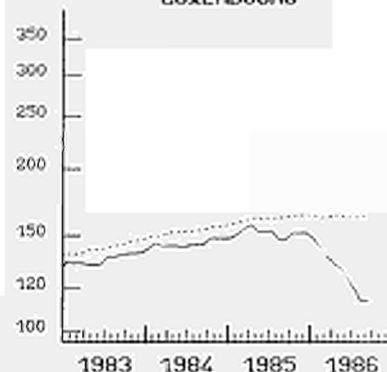
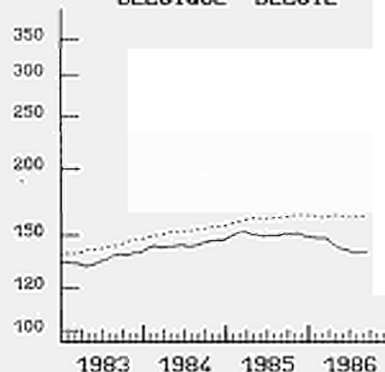
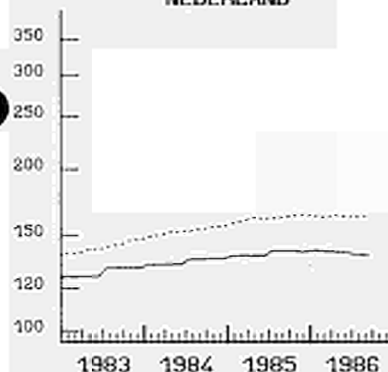
ITALIA



NEDERLAND

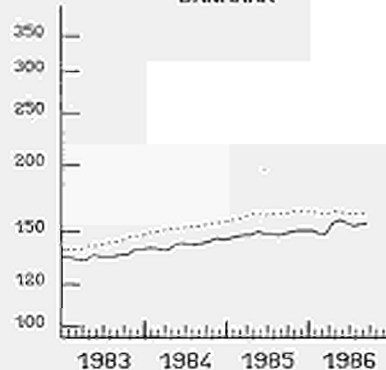
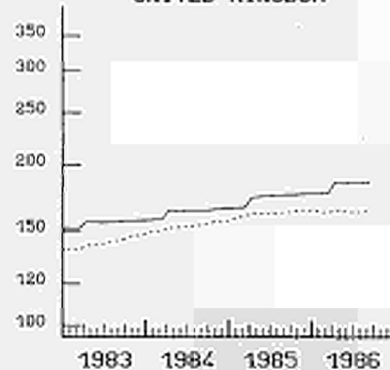
BELGIQUE BELGIE

LUXEMBOURG



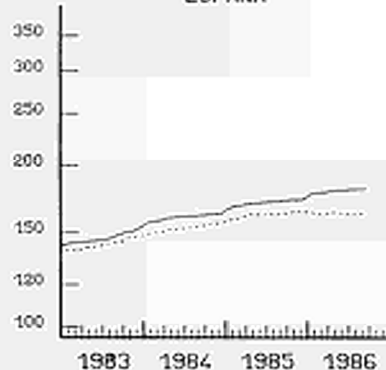
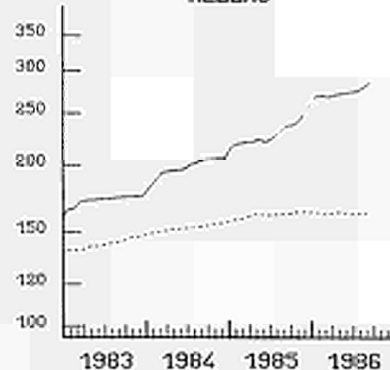
UNITED KINGDOM

DANMARK



HELLAS

ESPANA



EINFACH-LOGARITHISCHE SKALA

..... EUR 10
SERIE-LOGARITHMIC SCALE

ECHELLE SERIE-LOGARITHMIQUE

CONSUMER PRICES

RENTS AND WATER CHARGES (1),(2)

PRIX A LA CONSOMMATION

LOYERS ET CHARGES D'EAU (1),(2)

	EUR10	BR DEUTSCH LAND	FRANCE	ITALIA	NEDER- LAND	BELGIQUE BELGIE	LUXEM- BOURG	UNITED KINGDOM	IRELAND	DANMARK	ELLAS	ESPANA	PORTU- GAL	USA	
	PRICE INDICES							1980 = 100	INDICES DE PRIX						
1982 Ø	128.4	109.7	125.4	135.0	114.6	116.4	:	149.3	125.5	118.3	153.5	125.4	:	119.6	
1983 Ø	140.6	115.6	137.9	160.4	122.4	126.3	:	160.5	134.6	129.5	172.2	136.0	:	122.4	
1984 Ø	153.0	120.0	148.9	196.2	127.9	132.5	:	170.3	148.8	139.8	198.3	146.2	:	128.4	
1985 Ø	162.4	123.9	158.7	207.9	131.9	136.1	:	184.1	156.6	147.0	230.1	154.1	:	135.6	
1984 J	148.3	118.0	144.2	190.9	125.8	128.6	:	162.9		136.0	182.6	141.8	:	125.4	
1984 F	148.6	118.3	145.0	191.1	125.8	130.3	:	163.0	147.2	136.0	184.1	143.5	:	125.7	
1984 M	149.0	118.7	145.8	191.1	125.9	130.5	:	163.0		136.0	188.6	145.0	:	126.2	
1984 A	153.0	119.1	147.5	195.7	125.9	130.5	:	174.2		136.0	189.8	145.5	:	127.0	
1984 M	152.9	119.4	147.8	196.0	126.0	131.0	:	172.2	147.8	141.0	191.4	146.0	:	127.4	
1984 J	153.4	119.8	149.3	196.2	126.0	131.1	:	172.1		141.0	192.7	146.6	:	127.9	
1984 J	154.1	119.9	149.7	197.4	129.8	135.4	:	172.3		141.0	201.1	146.8	:	128.8	
1984 A	154.5	120.4	150.2	197.6	129.8	135.5	:	172.4	148.3	141.0	205.9	147.0	:	129.4	
1984 S	154.7	120.9	150.6	197.6	129.8	136.2	:	172.4		141.0	209.6	147.3	:	130.1	
1984 O	155.7	121.5	152.3	199.9	129.9	136.4	:	172.5		141.0	210.3	147.9	:	130.6	
1984 N	155.8	121.9	152.4	200.2	129.9	132.0	:	172.6	151.8	143.0	211.0	148.4	:	131.0	
1984 D	156.2	122.1	152.6	200.2	130.0	132.1	:	173.5		144.0	212.2	148.7	:	131.4	
1985 J	157.2	122.5	154.6	202.0	130.0	134.3	:	173.6		144.0	218.1	151.3	:	131.8	
1985 F	157.4	122.8	154.8	202.3	130.0	135.4	:	173.6	151.8	144.0	218.7	151.8	:	132.5	
1985 M	157.6	123.2	155.0	202.4	130.0	135.6	:	173.6		144.0	220.8	152.2	:	132.9	
1985 A	161.7	123.4	157.5	204.8	130.1	135.5	:	185.7		144.0	222.8	153.1	:	133.4	
1985 M	162.1	123.6	157.8	205.2	130.1	135.4	:	186.1	157.3	148.0	225.9	153.6	:	134.7	
1985 J	162.6	123.8	158.0	205.2	130.1	135.5	:	187.5		148.0	226.7	154.0	:	135.3	
1985 J	163.8	124.1	159.9	207.7	133.8	136.2	:	187.9		148.0	229.3	154.2	:	136.0	
1985 A	163.9	124.3	160.0	207.9	133.8	136.4	:	187.9	157.9	148.0	229.7	154.4	:	137.0	
1985 S	164.0	124.5	160.2	207.9	133.8	136.6	:	187.9		148.0	234.3	155.0	:	137.3	
1985 O	165.8	124.7	162.0	216.2	133.8	137.0	:	188.0		148.0	235.4	155.8	:	138.1	
1985 N	166.1	124.8	162.1	216.5	133.9	137.3	:	188.3	159.5	150.0	246.8	156.6	:	138.9	
1985 D	166.5	125.0	162.2	216.5	133.9	137.5	:	189.0		150.0	252.2	157.2	:	139.3	
1986 J	167.8	125.3	164.1	220.8	134.0	138.8	:	189.1		150.0	265.4	159.1	:	139.8	
1986 F	168.1	125.6	164.4	221.2	134.0	140.2	:	189.1	160.6	150.0	267.4	160.7	:	140.1	
1986 M	168.2	125.8	164.7	221.4	134.0	140.2	:	189.2		150.0	267.8	162.0	:	140.9	
1986 A	173.7	126.0	166.7	224.1	134.0	140.2	:	206.7		150.0	277.3	163.6	:	142.0	
1986 M	173.9	126.1	166.8	224.5	134.0	140.3	:	206.4	161.3	154.0	278.8	164.3	:	142.3	
1986 J	174.0	126.3	167.0	224.5	134.1	140.3	:	206.4		154.0	281.9	164.6	:	142.6	
1986 J	174.7	126.6	168.2	225.8	137.2	140.9	:	206.5		154.0	283.2	:	:	143.2	
1986 A	174.8	126.8	168.3	226.0	137.2	141.6	:	206.5		154.0	284.4	:	:	143.8	
1986 S	175.0	126.9	168.5	226.2	137.2	141.9	:	206.6		154.0	287.2	:	:	144.7	

- 1) Not available for Luxembourg and Portugal
 2) Imputed rent of owner occupied dwellings not covered for Ireland

- 1) Pas disponible pour le Luxembourg et le Portugal
 2) Ne couvre pas les loyers fictifs des habitations occupées par le propriétaire pour l'Irlande

CONSUMER PRICES

HOUSEHOLD GOODS AND SERVICES

PRIX A LA CONSOMMATION

BIENS ET SERVICES DE MENAGE

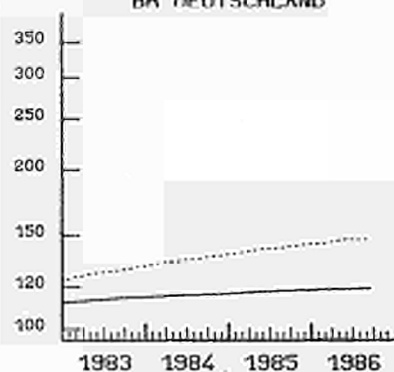
	EUR10	BR DEUTSCH LAND	FRANCE	ITALIA	NEDER- LAND	BELGIQUE BELGIE	LUXEM- BOURG	UNITED KINGDOM	IRELAND	DANMARK	ELLAS	ESPANA	PORTU- GAL	USA
	PRICE INDICES				1980 = 100				INDICES DE PRIX					
1982 Ø	119.5	110.6	125.1	136.6	109.3	108.7	115.3	114.4	132.8	122.7	148.3	127.8	140.1	113.3
1983 Ø	127.8	113.7	136.5	153.1	110.1	118.5	125.4	120.0	144.8	129.8	176.8	143.8	172.1	115.9
1984 Ø	134.9	115.9	146.1	169.0	111.9	125.2	132.7	125.0	154.2	137.8	221.8	159.5	225.5	117.9
1985 Ø	141.5	117.7	154.0	184.1	112.9	131.5	136.8	131.2	158.3	145.3	267.2	173.6	267.5	120.1
1984 J	131.7	115.0	141.8	162.1	111.1	122.3	129.7	122.1		133.0	206.8	152.3	194.0	116.9
1984 F	132.4	115.3	142.5	164.7	111.5	123.1	130.6	123.1	151.4	134.0	196.3	153.8	197.9	116.9
1984 M	133.2	115.5	143.6	165.4	111.7	123.7	131.6	123.3		136.0	213.2	155.5	202.7	117.3
1984 A	133.9	115.7	144.6	166.0	111.9	124.2	132.3	124.4		137.0	216.0	157.1	207.3	117.8
1984 M	134.5	115.8	145.4	167.9	112.1	124.5	132.8	124.7	152.9	137.0	221.1	158.2	211.1	117.8
1984 J	134.8	115.9	146.0	168.4	112.1	125.1	132.9	124.8		138.0	221.5	159.2	215.3	117.8
1984 J	135.1	116.0	146.6	168.8	111.6	125.6	132.9	125.0		138.0	223.4	160.7	220.6	117.6
1984 A	135.4	116.1	147.2	169.9	111.8	125.8	133.2	125.5	155.1	139.0	214.8	161.0	223.9	117.7
1984 S	136.2	116.2	148.0	171.1	111.9	126.3	133.5	126.1		140.0	231.6	162.4	227.0	118.7
1984 O	136.7	116.3	148.7	172.2	112.1	126.5	133.6	126.5		140.0	235.2	163.8	232.4	118.8
1984 N	137.5	116.5	149.2	175.5	112.3	127.4	134.4	126.9	157.4	141.0	238.3	164.8	237.9	118.7
1984 D	137.8	116.5	149.7	176.6	112.3	127.9	134.7	127.1		141.0	243.2	165.5	243.6	118.7
1985 J	138.2	116.7	150.3	176.6	112.1	128.4	134.8	127.3		142.0	246.0	167.0	247.5	118.7
1985 F	138.9	116.9	150.9	179.9	112.4	129.2	135.3	128.1	157.7	143.0	241.2	168.2	250.8	119.7
1985 M	139.7	117.2	151.7	180.6	112.6	129.7	135.4	129.1		144.0	252.5	169.6	256.8	120.0
1985 A	140.4	117.4	152.8	181.3	112.8	130.2	136.4	130.3		145.0	256.4	171.7	260.6	120.5
1985 M	141.1	117.6	153.4	183.5	112.9	130.8	136.7	131.0	157.2	145.0	260.5	172.5	263.4	120.4
1985 J	141.5	117.7	153.9	184.1	113.0	131.4	136.7	131.6		145.0	265.3	173.2	266.5	120.1
1985 J	141.7	117.8	154.4	184.4	112.8	131.8	136.9	131.4		146.0	267.2	174.0	268.8	119.9
1985 A	142.1	118.0	154.8	185.5	113.1	132.3	137.2	132.1	158.5	146.0	257.1	174.4	272.9	120.1
1985 S	142.7	118.1	155.5	186.2	113.2	132.9	137.8	132.7		146.0	276.6	176.5	274.9	120.1
1985 O	143.3	118.2	156.1	187.2	113.4	133.4	138.0	133.1		147.0	284.9	177.8	277.3	120.3
1985 N	144.1	118.5	156.7	189.9	113.5	133.8	138.2	133.8	159.8	147.0	293.3	178.6	281.1	120.6
1985 D	144.3	118.4	157.1	190.3	113.6	134.2	138.2	133.9		147.0	305.3	179.9	282.8	120.7
1986 J	144.7	118.5	157.6	190.2	113.8	134.7	138.8	133.7		148.0	319.0	183.2	284.3	120.9
1986 F	145.3	118.8	158.1	192.6	114.1	135.3	140.5	134.6	160.5	148.0	313.1	185.2	292.6	121.0
1986 M	145.5	118.9	158.9	193.1	114.2	135.8	141.5	132.7		149.0	335.0	188.3	296.1	121.4
1986 A	146.3	119.0	159.8	193.7	114.4	136.3	141.7	134.6		149.0	341.2	189.6	298.5	121.3
1986 M	146.7	118.9	160.4	195.7	114.5	136.8	141.9	134.7	162.0	150.0	343.6	190.2	302.3	121.5
1986 J	147.3	119.0	160.9	196.3	114.5	137.3	142.4	136.1		150.0	347.8	191.5	305.4	121.6
1986 J	147.3	119.1	161.4	196.4	114.4	137.8	142.8	135.3		150.0	345.8	191.9	307.5	121.8
1986 A	147.4	119.2	161.7	196.6	114.5	138.3	143.3	135.4	161.4	150.0	337.8	192.2	309.1	121.8
1986 S	147.9	119.3	162.2	197.2	114.6	138.6	143.7	135.6		151.0	362.6	193.2	312.6	122.3

VERBRAUCHERPREISE
WAREN U. DIENSTEN FÜR DEN HAUSHALT

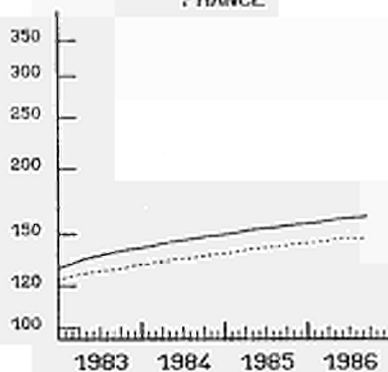
CONSUMER PRICES
HOUSEHOLD GOODS AND SERVICES
1980 = 100

PRIX A LA CONSOMMATION
BIENS ET SERVICES POUR LE MENAGE

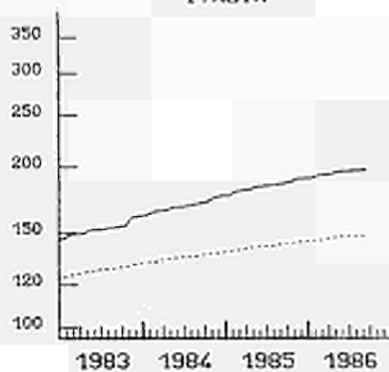
BR DEUTSCHLAND



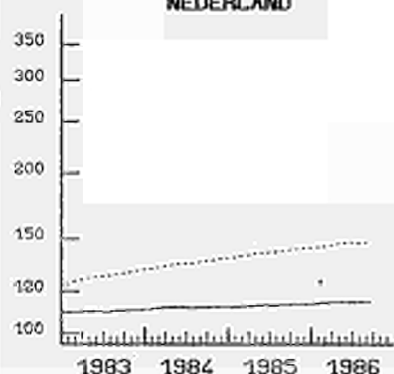
FRANCE



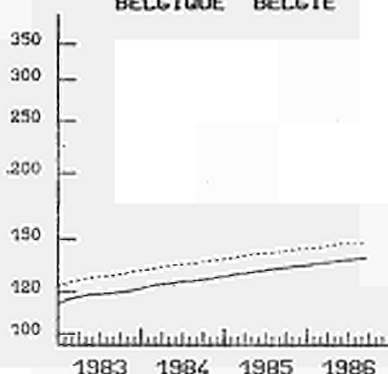
ITALIA



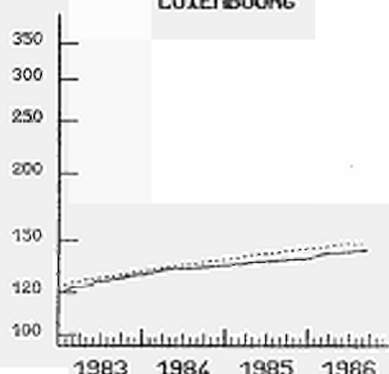
NEDERLAND



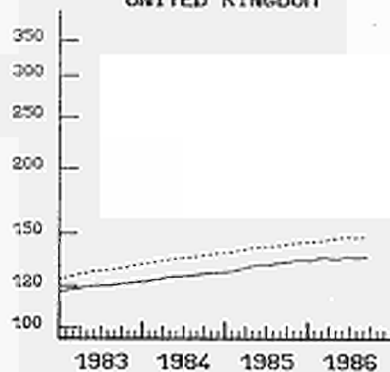
BELGIQUE BELGIE



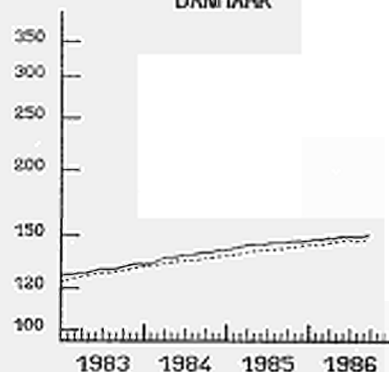
LUXEMBOURG



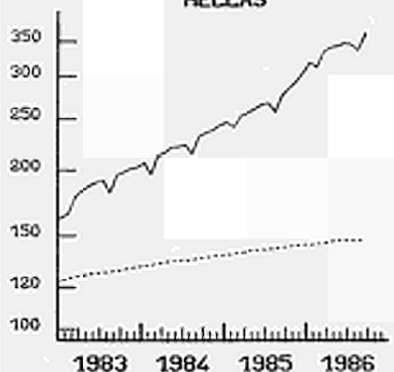
UNITED KINGDOM



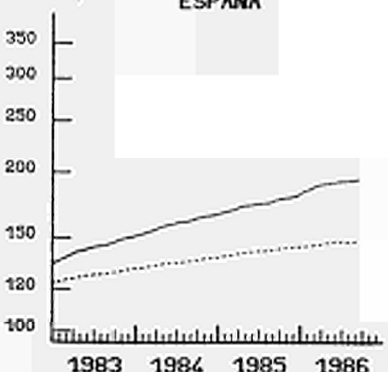
DANMARK



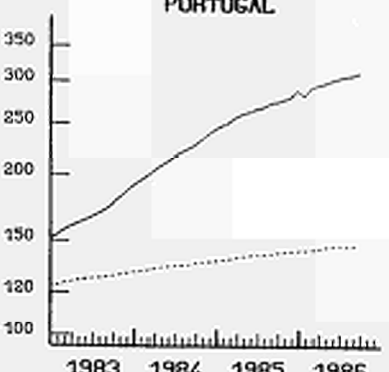
HELLAS



ESPAÑA



PORTUGAL



EINFACH-LOGARITHMISCHE SKALA

..... EUR 10
SEMI-LOGARITHMIC SCALE

ECHELLE SEMI-LOGARITHMIQUE

F1

CONSUMER PRICES

FURNITURE, FLOORCOVERINGS, HOUSEHOLD TEXTILES

PRIX A LA CONSOMMATION

MEUBLES, REVETMENTS DE SOL, TEXTILE DE MENAGE

	EUR10	BR DEUTSCH LAND	FRANCE	ITALIA	NEDER- LAND	BELGIQUE BELGIE	LUXEM- BOURG	UNITED KINGDOM	IRELAND	DANMARK	ELLAS	ESPANA	PORTU- GAL	USA	
	PRICE INDICES							1980 = 100	INDICES DE PRIX						
1982 Ø	117.3	111.7	123.4	136.5	109.7	107.9	115.4	106.5	128.5	120.1	144.7	126.2	149.5	113.6	
1983 Ø	125.4	115.0	134.7	152.8	109.9	116.1	126.2	109.2	138.0	127.5	185.9	141.8	178.5	117.3	
1984 Ø	132.8	117.4	143.9	167.3	111.7	121.8	133.0	114.4	145.9	135.4	225.4	156.4	217.3	120.8	
1985 Ø	139.9	119.4	151.9	181.8	112.7	125.4	137.5	119.4	154.1	143.6	275.3	169.2	255.4	112.2	
1984 J	129.3	116.4	139.8	159.8	111.0	118.0	130.5	111.0		131.3	209.3	149.8	198.3	117.4	
1984 F	129.7	116.8	140.4	163.2	111.3	118.6	131.0	112.6	143.1	132.1	196.2	151.0	201.2	117.9	
1984 M	131.0	117.1	141.6	163.5	111.5	119.1	131.7	113.3		133.7	216.3	152.0	207.1	119.4	
1984 A	131.5	117.3	142.6	164.1	111.9	119.5	132.5	112.7		133.9	219.5	154.2	210.1	120.3	
1984 M	132.4	117.3	143.3	166.8	112.2	119.9	133.0	113.2	144.0	134.7	227.1	155.4	212.1	121.0	
1984 J	132.7	117.4	143.9	166.9	112.1	120.4	133.2	114.5		134.7	225.5	156.4	215.6	120.3	
1984 J	133.1	117.5	144.4	167.1	111.4	124.5	133.3	114.5		135.7	226.7	157.3	219.2	119.5	
1984 A	133.2	117.5	145.0	168.5	111.6	125.1	133.5	116.1	147.2	136.5	213.9	157.7	221.4	120.7	
1984 S	134.4	117.7	145.7	169.0	111.7	125.3	133.6	116.6		137.5	235.3	159.0	223.4	123.8	
1984 O	134.9	117.8	146.1	169.8	112.1	126.1	133.8	115.8		138.3	243.6	160.3	229.0	123.7	
1984 N	135.4	118.0	146.8	174.3	112.1	122.3	134.9	116.4	149.5	138.5	242.3	161.4	233.6	122.9	
1984 D	135.9	118.0	147.4	174.7	112.1	122.7	134.9	116.4		138.5	249.3	162.1	236.7	122.3	
1985 J	136.1	118.3	148.0	174.8	111.6	122.9	135.2	115.6		139.3	251.2	163.1	237.6	111.0	
1985 F	136.7	118.5	148.5	177.9	112.2	123.3	135.8	117.2	151.5	140.3	245.7	164.3	240.1	111.8	
1985 M	137.9	118.9	149.5	178.3	112.3	123.7	135.8	118.0		142.1	261.1	166.0	246.5	112.2	
1985 A	138.8	119.6	150.8	178.8	112.6	124.1	136.8	118.5		142.1	265.8	167.7	247.8	113.8	
1985 M	139.4	119.3	151.5	181.3	112.8	124.5	137.1	119.1	153.8	143.6	269.3	168.5	249.8	113.0	
1985 J	139.9	119.5	151.9	181.6	112.9	125.1	137.4	119.4		143.6	273.8	168.9	253.5	112.7	
1985 J	139.9	119.6	152.4	181.7	112.5	125.3	137.8	118.7		143.8	274.2	169.3	257.5	111.8	
1985 A	140.0	119.7	152.7	183.0	112.7	126.1	138.5	120.0	154.9	144.6	264.5	169.7	259.2	112.4	
1985 S	141.2	119.8	153.4	183.4	112.8	126.6	138.8	120.7		145.6	285.1	171.5	262.5	111.6	
1985 O	142.1	120.0	154.1	184.1	113.1	127.2	138.9	121.3		145.6	296.0	172.9	265.8	112.1	
1985 N	143.1	120.1	154.7	188.0	113.3	127.6	138.9	122.1	156.4	145.8	302.7	173.7	271.1	112.3	
1985 D	143.6	119.9	155.1	188.2	113.3	128.0	138.9	121.9		146.6	314.4	174.4	273.3	112.0	
1986 J	144.1	120.0	155.7	188.9	113.6	128.3	139.9	120.8		146.6	324.7	178.4	280.9	112.3	
1986 F	144.6	120.3	156.2	192.5	113.9	128.7	142.4	122.5	156.7	146.8	316.3	180.5	287.3	112.8	
1986 M	145.8	120.5	157.1	192.9	114.0	129.2	144.3	123.1		147.8	335.0	182.3	288.7	113.9	
1986 A	146.6	120.5	158.0	193.2	114.3	129.7	144.5	124.1		148.3	343.0	183.9	291.9	113.5	
1986 M	147.3	120.2	158.8	195.8	114.4	130.3	144.6	125.3	157.4	148.3	345.9	184.6	295.6	113.6	
1986 J	147.8	120.4	159.4	196.2	114.3	130.7	145.3	125.1		149.3	351.4	186.0	298.7	113.5	
1986 J	147.8	120.4	159.9	196.2	114.1	138.4	145.7	123.3		149.3	346.9	186.5	302.4	:	
1986 A	147.7	120.4	160.2	195.5	114.3	138.9	146.0	123.2	158.2	150.3	341.6	186.9	305.1	:	
1986 S	149.1	120.5	160.7	195.6	114.4	139.2	146.2	124.0		150.5	372.2	187.8	310.8	:	

CONSUMER PRICES

PRIX A LA CONSOMMATION

HOUSEHOLD APPLIANCES, UTENSILS AND SERVICES

APPAREILS, USTENSILES ET SERVICES DE MENAGE

	EUR10	BR DEUTSCH LAND	FRANCE	ITALIA	NEDER- LAND	BELGIQUE BELGIE	LUXEM- BOURG	UNITED KINGDOM	IRELAND	DANMARK	ELLAS	ESPANA	PORTU- GAL	USA
	PRICE INDICES				1980 = 100				INDICES DE PRIX					
1982 Ø	119.8	109.2	126.9	136.6	108.7	109.4	114.5	116.0	135.7	125.0	155.5	129.7	131.2	114.6
1983 Ø	128.7	112.0	138.3	155.3	110.4	120.5	126.1	121.5	149.4	132.1	194.6	146.1	161.1	117.8
1984 Ø	136.1	114.0	148.3	170.1	112.0	131.2	134.7	125.8	159.8	140.3	231.1	163.2	218.7	119.3
1985 Ø	142.7	115.5	156.0	185.6	113.3	136.4	138.4	131.3	161.1	146.9	272.0	179.0	278.0	120.6
1984 J	132.7	113.3	143.9	163.5	111.4	125.5	131.0	123.5		136.1	216.4	155.2	190.7	118.8
1984 F	133.3	113.4	144.6	165.6	111.7	126.6	132.4	124.2	157.0	136.9	208.2	157.0	195.5	119.0
1984 M	134.1	113.6	145.7	166.5	112.0	127.4	133.8	124.1		138.1	222.3	158.3	199.4	119.2
1984 A	134.9	113.8	146.7	167.2	111.9	127.9	134.4	125.8		139.6	225.4	160.5	205.3	119.6
1984 M	135.4	113.9	147.4	168.5	112.0	128.2	134.9	126.0	159.0	139.9	228.3	161.5	210.5	119.3
1984 J	135.7	113.9	148.1	169.3	112.0	128.8	135.0	125.7		140.4	230.9	162.7	215.4	119.4
1984 J	136.5	114.1	148.8	170.0	111.9	135.8	135.0	125.8		140.9	233.5	164.7	222.2	119.0
1984 A	136.8	114.1	149.5	170.8	111.9	136.4	135.1	126.0	160.5	141.4	228.2	165.1	226.5	119.0
1984 S	137.6	114.2	150.3	172.5	112.2	136.9	135.7	126.4		141.7	240.3	166.5	230.5	119.6
1984 O	138.2	114.4	151.2	173.7	112.3	137.4	135.7	127.2		142.4	243.7	168.0	235.9	119.3
1984 N	138.6	114.7	151.7	176.3	112.4	131.6	136.1	127.4	162.7	143.2	246.7	169.0	242.2	119.4
1984 D	138.9	114.6	152.1	176.9	112.5	132.1	136.8	127.6		143.4	249.7	169.6	250.3	119.7
1985 J	139.4	114.7	152.7	177.7	112.8	132.7	136.7	128.0		144.1	253.0	171.7	256.8	120.0
1985 F	140.2	114.9	153.3	181.2	112.7	133.9	137.1	128.3	161.9	144.9	249.8	172.9	260.9	120.7
1985 M	140.8	115.0	153.9	182.1	112.9	134.4	137.4	129.3		145.9	258.2	174.0	266.7	120.6
1985 A	141.5	115.1	154.8	182.8	113.0	135.0	138.2	130.4		146.4	262.4	176.5	272.7	120.9
1985 M	142.2	115.3	155.4	184.9	113.1	135.8	138.7	131.1	159.5	147.0	266.7	177.4	276.3	120.9
1985 J	142.7	115.4	155.9	185.7	113.0	136.4	138.5	131.7		147.1	270.5	178.4	278.9	120.5
1985 J	143.0	115.5	156.4	186.2	113.3	136.9	138.5	131.5		147.1	272.6	179.6	279.9	120.3
1985 A	143.0	115.8	156.9	187.1	113.5	137.4	138.7	132.0	160.9	147.1	250.3	180.1	286.0	120.4
1985 S	144.1	115.9	157.6	188.1	113.7	138.0	138.9	132.6		147.6	281.9	182.6	286.9	120.5
1985 O	144.6	116.0	158.1	189.2	113.9	138.5	139.3	132.9		148.2	288.2	183.8	288.5	120.8
1985 N	145.4	116.4	158.6	191.1	113.9	138.8	139.7	133.6	162.0	148.2	298.9	184.5	291.0	121.0
1985 D	145.9	116.4	159.0	191.6	113.9	139.3	139.7	133.7		148.4	311.5	186.3	291.6	121.2
1986 J	146.3	116.5	159.5	191.2	114.1	139.9	139.9	133.4		148.4	329.5	189.1	288.4	121.0
1986 F	146.8	116.7	159.9	192.9	114.4	140.6	140.5	134.3	163.0	148.6	326.5	191.1	298.5	121.1
1986 M	147.7	116.8	160.7	193.5	114.5	141.2	140.3	135.1		150.2	348.5	195.1	303.7	121.1
1986 A	147.8	116.9	161.4	194.2	114.6	141.6	140.4	133.0		150.7	353.4	196.1	305.5	121.4
1986 M	148.4	117.0	161.9	196.0	114.7	142.2	140.9	133.1	165.0	151.2	356.6	195.6	309.3	121.5
1986 J	149.1	117.2	162.4	196.6	114.7	142.8	141.2	135.4		151.2	359.8	197.8	312.3	121.7
1986 J	149.2	117.2	162.9	197.0	114.8	143.3	141.4	134.6		151.2	360.5	198.3	313.0	:
1986 A	149.2	117.4	163.1	197.6	114.8	144.0	142.2	134.7	163.5	150.4	351.9	198.6	313.7	:
1986 S	149.8	117.5	163.6	198.2	114.8	144.4	143.1	134.6		150.9	370.8	199.8	315.3	:

CONSUMER PRICES

TRANSPORT AND COMMUNICATIONS

PRIX A LA CONSOMMATION

TRANSPORTS ET COMMUNICATIONS

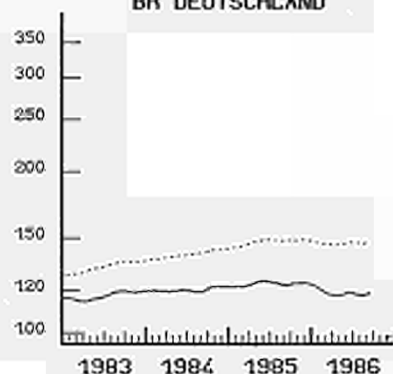
	EUR10	BR DEUTSCH LAND	FRANCE	ITALIA	NEDER- LAND	BELGIQUE BELGIE	LUXEM- BOURG	UNITED KINGDOM	IRELAND	DANMARK	ELLAS	ESPANA	PORTU- GAL	USA
	PRICE INDICES				1980 = 100				INDICES DE PRIX					
1982 B	122.4	112.6	127.1	137.4	112.3	120.7	121.4	120.5	149.7	125.4	131.0	131.4	157.9	116.7
1983 B	132.5	117.1	138.2	160.9	116.5	131.2	131.3	127.5	170.3	133.3	161.0	150.1	210.4	119.5
1984 B	139.7	120.1	148.8	178.1	120.1	134.4	140.4	130.6	183.0	139.5	177.1	165.0	257.9	124.8
1985 B	147.2	123.2	159.9	190.7	123.0	141.3	145.7	136.9	194.3	145.2	206.9	175.8	294.9	128.1
1984 J	136.7	119.7	143.1	172.2	118.5	131.4	139.4	129.2		136.0	166.2	159.9	234.8	122.5
1984 F	137.1	119.7	143.9	173.7	118.8	132.0	140.0	128.5	180.5	138.0	172.2	162.1	242.6	122.4
1984 M	137.3	119.4	144.5	174.6	118.8	132.3	139.7	128.4		138.0	174.2	162.6	242.6	122.9
1984 A	138.0	119.4	145.6	174.7	119.7	133.3	139.4	129.7		139.0	176.6	163.1	243.0	124.0
1984 M	138.7	119.6	146.5	176.2	120.1	133.7	139.6	130.4	181.5	139.0	176.7	164.5	243.0	125.0
1984 J	139.2	120.1	147.0	177.2	120.3	132.4	139.8	131.0		140.0	176.8	165.3	272.0	125.4
1984 J	139.6	119.7	149.6	177.3	120.6	134.1	139.8	130.7		140.0	177.5	165.4	272.1	125.3
1984 A	140.5	119.1	151.8	180.7	120.9	134.9	139.9	131.0	183.6	140.0	178.0	166.5	272.1	125.3
1984 S	140.9	119.4	152.4	181.4	120.8	135.7	140.2	130.8		141.0	180.2	167.1	272.1	125.6
1984 O	142.4	121.8	153.3	182.5	121.5	138.3	142.0	132.2		140.0	180.6	167.4	272.7	126.3
1984 N	142.8	122.0	153.9	183.1	120.7	137.4	142.2	132.8	186.6	142.0	181.8	168.0	272.7	126.6
1984 D	142.9	121.8	154.5	183.7	120.8	137.3	142.5	132.5		141.0	184.2	168.6	272.7	126.5
1985 J	143.6	121.6	155.9	185.1	121.2	137.6	141.9	132.8		142.0	190.8	170.3	289.7	126.0
1985 F	144.2	121.9	156.0	186.5	122.1	139.4	142.0	133.5	190.7	143.0	191.6	171.4	316.5	125.8
1985 M	145.5	122.0	157.9	188.0	123.6	141.1	144.1	135.5		144.0	193.6	172.4	316.5	126.8
1985 A	147.0	123.2	159.6	189.0	123.8	141.9	145.9	137.5		145.0	197.8	173.7	317.7	128.1
1985 M	148.2	124.7	160.6	190.5	124.5	143.0	146.7	138.5	194.9	147.0	197.9	174.2	317.7	128.7
1985 J	148.4	124.7	161.1	191.4	124.1	142.5	147.8	138.4		148.0	199.0	175.5	317.7	128.9
1985 J	148.4	124.1	162.3	191.4	123.6	142.2	147.8	138.2		147.0	199.4	176.8	319.3	128.9
1985 A	148.2	123.2	162.2	192.0	122.9	141.4	146.8	138.1	196.7	146.0	205.4	177.9	319.3	128.4
1985 S	147.9	122.4	161.0	191.7	123.0	141.8	145.5	138.4		145.0	214.7	178.5	319.3	128.0
1985 O	148.0	123.5	160.7	192.2	122.6	141.5	146.6	137.5		145.0	218.6	179.0	321.3	128.5
1985 N	148.4	123.6	160.7	193.7	122.9	141.7	146.4	137.5	194.9	145.0	229.3	181.3	324.9	129.3
1985 D	149.0	123.6	160.3	197.4	122.2	141.1	146.6	137.4		145.0	244.6	178.5	341.6	129.7
1986 J	147.3	122.5	158.9	196.4	121.5	139.6	145.9	133.7		145.0	252.1	180.7	349.1	129.7
1986 F	146.8	120.2	156.3	196.6	120.1	137.4	143.8	137.1	196.3	143.0	252.7	181.7	349.1	127.8
1986 M	146.2	118.1	155.4	197.8	118.3	135.3	140.7	138.0		144.0	253.9	181.4	354.4	124.0
1986 A	145.7	117.3	156.5	198.1	118.7	135.8	137.7	135.6		149.0	255.3	182.9	356.3	121.4
1986 M	146.1	117.5	158.2	198.3	119.2	135.9	137.6	134.7	191.9	151.0	259.5	183.9	354.6	122.4
1986 J	147.3	118.9	159.7	199.1	118.9	136.3	136.7	136.1		152.0	259.5	184.8	354.6	123.5
1986 J	146.9	117.9	160.0	199.3	118.1	135.5	137.5	135.7		152.0	260.6	186.0	355.6	122.0
1986 A	146.5	117.2	158.8	199.7	118.8	134.1	134.2	135.8	190.7	152.0	264.4	186.1	355.6	120.6
1986 S	147.6	118.3	159.2	200.0	119.8	135.5	134.5	137.7		153.0	269.8	186.3	355.6	121.0

VERBRAUCHERPREISE
VERKEHR, NACHRICHTENUEBERMITTLUNG

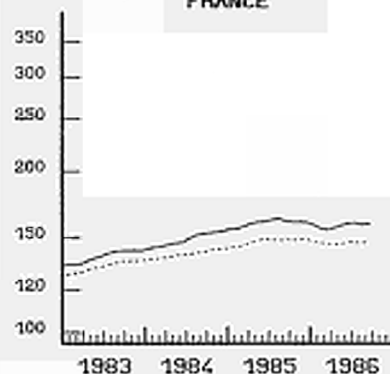
CONSUMER PRICES
TRANSPORT, COMMUNICATIONS
1980 = 100

PIRI A LA CONSOMMATION
TRANSPORTS, COMMUNICATIONS

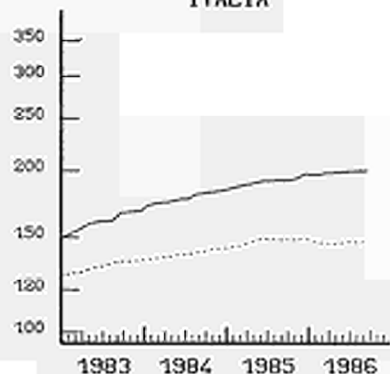
BR DEUTSCHLAND



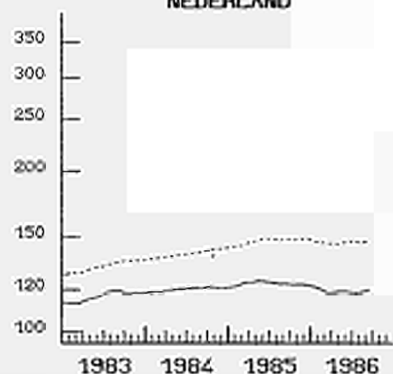
FRANCE



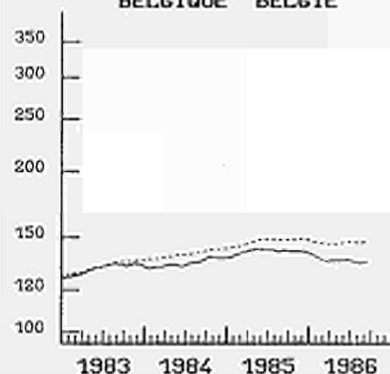
ITALIA



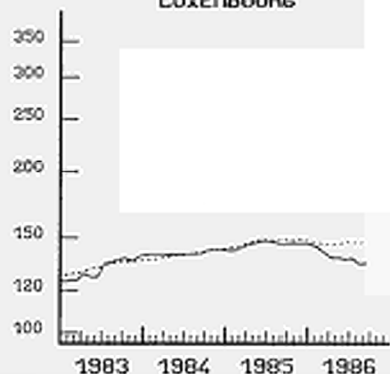
NEDERLAND



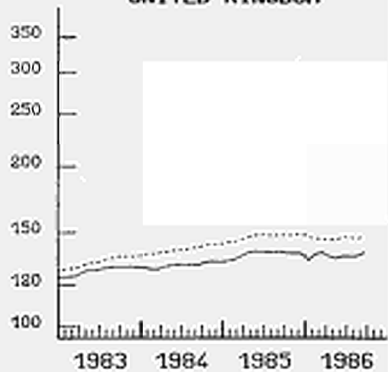
BELGIE BELGIE



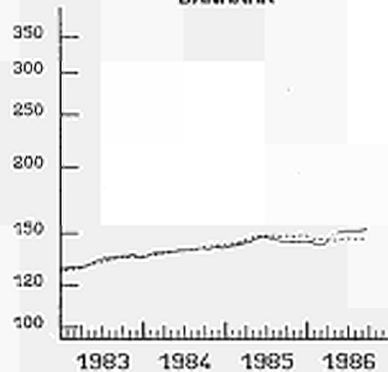
LUXEMBOURG



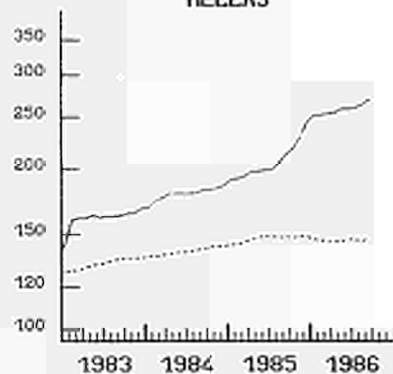
UNITED KINGDOM



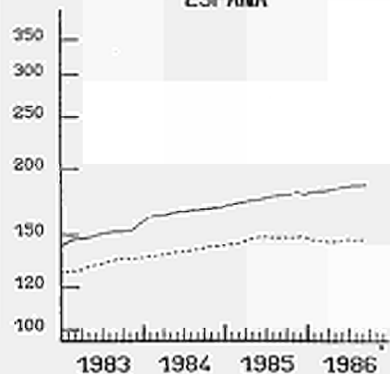
DANMARK



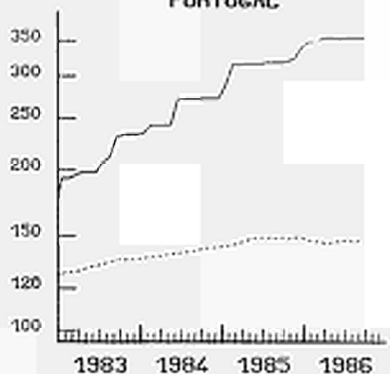
HELLAS



ESPANA



PORTUGAL



EINFACH-LOGARITHMISCHE SKALA

..... EUR 10
SERI-LOGARITHMIC SCALE

ECHELLE SERI-LOGARITHMIQUE

G1

CONSUMER PRICES
PRIVATE TRANSPORTPRIX A LA CONSOMMATION
TRANSPORT PRIVE

	EUR10	BR DEUTSCH LAND	FRANCE	ITALIA	NEDER- LAND	BELGIQUE BELGIE	LUXEM- BOURG	UNITED KINGDOM	IRELAND	DANMARK	ELLAS	ESPANA	PORTU- GAL	USA
	PRICE INDICES				1980 = 100				INDICES DE PRIX					
1982 Ø	121.5	112.4	127.4	136.3	113.7	122.1	:	117.8	150.6	125.1	128.0	125.1	139.5	115.4
1983 Ø	130.9	116.9	138.4	157.0	117.7	132.2	:	125.7	170.8	130.9	156.2	144.0	178.4	117.9
1984 Ø	137.9	120.1	148.9	173.3	121.5	135.7	:	128.7	183.5	136.2	178.8	157.1	208.0	123.0
1985 Ø	145.8	124.1	160.3	186.0	124.7	142.7	:	134.7	194.4	150.2	212.3	166.6	230.7	126.1
1984 J	135.0	119.8	143.1	167.9	120.0	132.6	:	127.4		132.7	167.1	153.8	193.5	120.8
1984 F	135.4	119.7	143.9	169.7	120.3	133.1	:	126.5	180.6	134.8	173.7	154.4	208.4	120.7
1984 M	135.5	119.3	144.6	170.1	120.3	133.3	:	126.3		134.1	177.1	154.9	208.4	121.2
1984 A	136.2	119.4	145.9	170.2	120.9	134.3	:	127.8		134.8	177.4	155.0	209.0	122.3
1984 M	136.9	119.6	146.3	172.0	121.4	134.9	:	128.6	181.7	135.1	178.7	156.7	209.0	123.4
1984 J	137.3	120.0	146.8	172.4	121.5	133.3	:	129.3		136.8	178.6	156.8	209.0	123.7
1984 J	137.9	119.6	149.8	172.5	121.9	135.3	:	129.0		136.8	178.7	156.9	209.3	123.4
1984 A	138.7	119.0	151.5	175.5	122.3	136.3	:	129.2	183.8	137.1	179.0	158.2	209.3	123.4
1984 S	139.1	119.3	152.2	176.3	122.2	137.1	:	129.0		137.8	182.3	158.8	209.3	123.8
1984 O	140.8	122.0	153.3	177.6	123.1	140.3	:	130.6		136.4	183.5	159.3	210.4	124.5
1984 N	141.1	122.0	154.2	178.1	122.0	139.1	:	130.7	187.9	139.1	185.0	159.9	210.4	124.7
1984 D	140.9	121.9	154.7	176.9	122.1	139.0	:	130.2		138.4	185.0	160.8	210.4	124.6
1985 J	142.2	122.3	156.3	180.2	122.6	139.2	:	130.2		147.0	196.2	162.5	225.9	124.1
1985 F	142.8	122.7	156.4	181.7	123.7	140.6	:	130.8	191.4	147.0	197.3	162.8	225.9	123.9
1985 M	144.2	122.9	158.6	183.0	125.5	142.6	:	133.2		147.6	199.4	163.5	225.9	124.8
1985 A	145.8	124.2	160.1	184.4	125.7	143.5	:	135.6		149.3	202.2	164.9	227.5	126.3
1985 M	147.0	125.7	161.1	186.1	126.5	143.3	:	136.7	195.1	150.0	203.4	165.4	227.5	126.8
1985 J	147.2	125.5	161.7	187.1	126.1	144.2	:	136.6		150.7	204.0	165.6	227.5	127.0
1985 J	147.3	124.9	163.2	186.9	125.5	143.9	:	136.3		150.7	204.7	167.0	230.5	126.9
1985 A	146.9	123.9	162.8	187.6	124.5	142.9	:	136.2	196.5	151.7	212.7	168.3	230.5	126.4
1985 S	146.3	123.2	161.2	187.0	124.6	143.3	:	136.0		152.0	220.5	168.9	230.5	125.9
1985 O	146.5	124.5	160.8	187.5	124.1	143.0	:	135.5		152.3	221.3	169.4	234.2	126.3
1985 N	146.7	124.6	160.8	188.1	124.5	143.2	:	135.0	194.8	152.3	236.6	172.0	241.1	127.2
1985 D	147.1	124.6	160.4	192.0	123.6	142.5	:	134.7		151.6	249.2	168.8	241.1	127.6
1986 J	146.1	124.4	158.1	190.4	122.8	140.5	:	134.3		151.6	255.6	171.8	248.9	127.4
1986 F	144.0	121.8	155.1	188.2	121.0	137.5	:	133.7	195.6	152.6	258.8	172.7	248.9	125.3
1986 M	142.4	119.3	153.8	188.4	118.8	134.9	:	132.0		152.9	259.2	171.3	248.9	121.3
1986 A	142.3	118.4	155.0	188.4	119.2	135.5	:	131.3		153.9	259.9	171.7	252.5	118.5
1986 M	142.5	118.6	156.4	188.5	119.8	135.6	:	130.3	189.5	148.4	264.9	172.6	249.1	119.5
1986 J	144.9	120.0	158.3	189.0	119.4	136.1	:	138.1		148.4	266.2	173.7	249.1	118.8
1986 J	143.3	118.9	158.7	189.1	118.3	135.1	:	131.4		147.7	266.2	174.7	250.9	:
1986 A	142.7	118.1	157.0	189.4	119.2	133.5	:	131.5	187.8	148.7	269.1	174.6	250.9	:
1986 S	143.8	119.3	157.5	189.4	120.4	135.1	:	133.8		150.4	273.5	174.8	250.9	:

CONSUMER PRICES
PUBLIC TRANSPORT

PRIX A LA CONSOMMATION
TRANSPORT PUBLIC

	EUR10	BR DEUTSCH LAND	FRANCE	ITALIA	NEDER- LAND	BELGIQUE BELGIE	LUXEM- BOURG	UNITED KINGDOM	IRELAND	DANMARK	ELLAS	ESPANA	PORTU- GAL	USA
	PRICE INDICES				1980 = 100				INDICES DE PRIX					
1982 Ø	128.7	118.7	130.8	139.9	115.6	113.9	116.4	128.4	141.4	136.6	117.9	145.0	192.9	137.5
1983 Ø	147.1	124.0	144.9	177.5	126.9	128.7	128.3	135.6	168.5	157.8	151.4	165.1	267.4	144.1
1984 Ø	158.1	126.5	155.0	201.9	135.2	132.9	143.8	138.0	188.0	173.2	169.2	186.6	349.0	153.0
1985 Ø	167.9	128.9	165.1	214.9	139.4	141.1	150.5	144.9	203.2	179.9	196.8	203.2	464.2	160.0
1984 J	154.1	125.8	150.5	195.6	129.8	130.9	143.6	136.6		170.0	158.0	175.5	301.0	150.3
1984 F	155.0	125.9	151.7	196.5	129.9	133.0	143.6	137.1	186.3	170.0	161.5	181.7	301.0	150.0
1984 M	156.2	126.0	152.2	200.3	129.9	133.0	143.6	137.1		171.0	162.7	182.5	301.0	150.0
1984 A	157.5	126.2	152.4	200.9	135.4	133.0	143.6	138.0		172.0	171.9	184.7	301.0	149.9
1984 M	157.8	125.6	155.0	201.5	136.3	133.0	143.6	138.0	187.4	173.0	168.2	185.2	301.0	150.9
1984 J	158.3	127.6	155.1	201.9	136.9	133.0	143.6	138.1		174.0	168.5	189.2	383.3	153.1
1984 J	158.7	127.5	155.4	202.3	136.9	133.1	143.6	138.1		175.0	171.6	189.3	383.2	154.7
1984 A	159.4	127.7	157.2	202.9	137.1	133.1	143.6	138.6	190.9	174.0	172.6	189.6	383.2	155.3
1984 S	159.5	127.0	157.4	203.5	137.1	133.2	143.6	138.6		174.0	172.6	190.0	383.2	154.8
1984 O	159.4	126.5	157.5	203.7	137.2	133.2	144.3	138.6		175.0	171.1	190.1	383.3	155.4
1984 N	159.6	126.1	157.5	204.8	137.9	133.2	144.3	138.7	187.6	175.0	171.2	190.6	383.3	155.7
1984 D	161.6	126.4	158.6	208.4	137.9	133.3	144.3	138.9		175.0	180.7	190.5	383.3	156.1
1985 J	162.8	127.1	159.4	208.6	137.9	136.5	144.3	143.8		176.0	176.4	192.5	397.1	156.8
1985 F	163.4	127.4	159.8	209.9	138.2	141.4	144.3	143.9	199.8	176.0	176.4	197.1	465.6	156.7
1985 M	164.7	127.7	161.1	212.8	138.1	141.5	144.3	144.0		176.0	178.7	197.6	465.6	156.7
1985 A	166.4	127.7	165.0	213.1	139.4	141.5	144.3	144.7		177.0	188.1	198.9	466.7	158.2
1985 M	167.1	129.4	166.4	213.9	140.0	141.5	153.6	144.9	200.8	180.0	184.9	199.3	466.7	158.3
1985 J	167.8	130.7	166.5	214.7	140.0	141.5	153.6	145.0		182.0	187.5	205.9	466.7	158.7
1985 J	168.1	131.3	166.8	215.2	140.0	141.5	153.6	145.1		182.0	187.5	206.7	466.8	159.9
1985 A	168.2	130.7	166.9	215.3	140.1	141.8	153.6	145.3	207.8	182.0	189.1	207.4	466.8	160.4
1985 S	169.9	129.5	167.1	217.3	140.1	141.5	153.6	145.3		182.0	206.3	207.8	466.8	162.1
1985 O	170.9	128.6	167.2	217.6	140.1	141.7	153.6	145.5		182.0	220.1	208.1	466.7	163.5
1985 N	171.1	128.4	167.2	218.4	139.3	141.7	153.6	145.8	204.4	182.0	220.1	208.5	466.8	164.0
1985 D	174.4	128.8	167.3	222.6	139.7	141.7	153.6	146.0		182.0	246.7	208.8	508.1	164.1
1986 J	175.7	129.6	167.6	221.7	139.6	143.5	155.3	151.9		182.0	244.9	214.5	515.1	166.7
1986 F	178.8	130.2	167.9	235.4	139.6	148.5	155.3	151.3	212.0	182.0	238.4	216.8	515.1	167.8
1986 M	181.7	131.2	168.4	241.9	139.6	148.6	155.3	154.2		182.0	242.1	226.9	530.1	167.4
1986 A	183.6	131.4	170.1	243.8	140.0	148.7	155.3	157.1		182.0	246.6	227.2	530.1	167.8
1986 M	184.9	131.6	174.2	244.9	140.5	148.7	155.3	157.1	213.0	187.0	249.6	227.9	530.4	168.4
1986 J	185.6	132.7	174.6	247.0	140.5	148.7	155.3	157.7		190.0	245.6	228.4	530.4	168.1
1986 J	186.2	133.0	174.6	247.3	140.5	148.8	155.3	157.8		191.0	250.1	230.7	530.4	:
1986 A	186.8	132.1	174.7	249.8	140.6	149.0	155.3	157.8	215.7	189.0	252.0	233.5	530.4	:
1986 S	187.4	131.5	174.8	252.0	140.6	149.0	155.3	157.9		190.0	254.0	233.6	530.4	:

CONSUMER PRICES

COMMUNICATIONS (1)

PRIX A LA CONSOMMATION

COMMUNICATIONS (1)

	EUR10	BR DEUTSCH LAND	FRANCE	ITALIA	NEDER- LAND	BELGIQUE BELGIE	LUXEM- BOURG	UNITED KINGDOM	IRELAND	DANMARK	ELLAS	ESPANA	PORTU- GAL	USA
	PRICE INDICES				1980 = 100				INDICES DE PRIX					
1982 Ø	124.0	102.7	114.3	143.8	101.8	111.9	112.4	135.9	161.1	119.3	182.5	147.1	134.3	120.0
1983 Ø	131.2	104.5	121.4	169.8	103.6	120.7	129.2	134.9	184.4	134.3	203.8	156.7	186.9	127.7
1984 Ø	136.2	104.3	133.9	182.2	103.9	123.7	146.1	139.1	189.8	139.0	206.8	169.5	221.4	138.4
1985 Ø	142.0	104.5	142.1	194.6	104.0	127.2	146.1	147.7	200.4	145.0	209.3	176.0	276.4	143.9
1984 J	133.2	104.5	126.5	171.9	103.9	121.2	146.1	137.8		139.0	206.8	159.4	221.4	135.1
1984 F	133.2	104.5	126.5	171.9	103.9	122.2	146.1	137.8	189.8	139.0	206.8	169.0	221.4	137.6
1984 M	133.2	104.5	126.5	171.9	103.9	123.2	146.1	137.8		139.0	206.8	169.0	221.4	137.0
1984 A	133.3	104.5	126.5	171.9	103.9	124.2	146.1	137.8		139.0	206.8	170.8	221.4	137.3
1984 M	133.8	104.5	130.5	171.9	103.9	124.2	146.1	137.8	189.8	139.0	206.8	170.8	221.4	137.6
1984 J	135.3	104.5	131.5	180.3	103.9	124.2	146.1	137.8		139.0	206.8	170.8	221.4	137.9
1984 J	135.5	104.5	133.3	180.3	103.9	124.2	146.1	137.8		139.0	206.8	170.8	221.4	138.6
1984 A	138.5	103.7	141.2	193.3	103.9	124.2	146.1	137.8	189.8	139.0	206.8	170.8	221.4	138.8
1984 S	138.7	103.7	141.2	193.3	103.9	124.2	146.1	138.5		139.0	206.8	170.8	221.4	139.9
1984 O	138.8	104.1	141.1	193.3	103.9	124.2	146.1	138.5		139.0	206.8	170.8	221.4	140.0
1984 N	140.4	104.2	140.9	193.3	103.9	124.2	146.1	144.7	189.8	139.0	206.8	170.8	221.4	140.8
1984 D	140.8	104.7	140.9	193.3	103.9	124.2	146.1	145.7		139.0	206.8	170.8	221.4	140.3
1985 J	141.2	104.7	140.9	192.5	103.9	124.2	146.1	146.8		145.0	208.9	170.8	255.0	140.6
1985 F	141.3	104.7	140.9	192.5	103.9	126.9	146.1	146.8	189.8	145.0	208.9	170.8	276.8	139.3
1985 M	141.3	104.7	140.9	192.5	103.9	127.3	146.1	146.8		145.0	208.9	177.0	276.8	141.0
1985 A	141.3	104.7	140.9	192.5	104.1	127.3	146.1	146.8		145.0	208.9	177.0	276.8	140.8
1985 M	141.3	104.7	140.9	192.5	104.1	127.3	146.1	146.8	203.9	145.0	208.9	177.0	276.8	141.0
1985 J	141.3	104.7	140.9	192.5	104.1	127.3	146.1	146.8		145.0	208.9	177.0	276.8	144.2
1985 J	141.2	104.3	140.9	192.5	104.1	127.4	146.1	146.8		145.0	208.9	177.1	276.8	145.3
1985 A	141.6	104.3	143.9	192.5	104.1	127.4	146.1	146.8	203.9	145.0	208.9	177.1	276.8	146.1
1985 S	141.6	104.3	143.8	192.5	104.1	127.4	146.1	146.9		145.0	208.9	177.1	276.8	146.3
1985 O	141.6	104.3	143.8	192.5	104.1	128.0	146.1	146.9		145.0	208.9	177.1	276.8	147.0
1985 N	144.9	104.3	143.8	205.3	104.1	128.1	146.1	151.2	203.9	145.0	208.9	177.1	276.8	147.4
1985 D	145.6	104.3	143.8	205.3	104.1	128.2	146.1	152.9		145.0	213.8	177.1	294.1	147.7
1986 J	149.2	104.3	143.8	210.9	104.1	128.8	148.3	154.2		145.0	268.6	161.1	302.1	148.3
1986 F	149.2	104.3	143.7	210.9	104.1	129.4	148.3	154.2	203.9	145.0	268.6	161.3	302.1	147.9
1986 M	149.2	104.3	143.5	210.9	104.1	130.7	148.3	154.2		145.0	268.6	161.3	302.1	148.3
1986 A	149.7	104.3	143.5	213.5	104.1	131.0	148.3	154.2		145.0	268.6	180.5	302.1	149.9
1986 M	149.7	104.3	143.5	213.5	104.1	131.1	148.3	154.2	213.4	145.0	268.6	180.5	302.1	150.3
1986 J	149.7	104.3	143.5	213.5	104.1	131.1	148.3	154.2		145.0	268.6	180.5	302.1	150.7
1986 J	149.6	103.9	143.5	213.5	105.3	131.1	148.3	154.2		145.0	268.6	180.5	302.1	:
1986 A	150.7	103.9	144.8	213.5	105.3	131.1	148.3	154.2	213.4	145.0	290.7	181.4	302.1	:
1986 S	152.0	103.9	144.8	213.5	105.3	131.9	148.3	154.2		145.0	320.6	181.4	302.1	:

H

CONSUMER PRICES

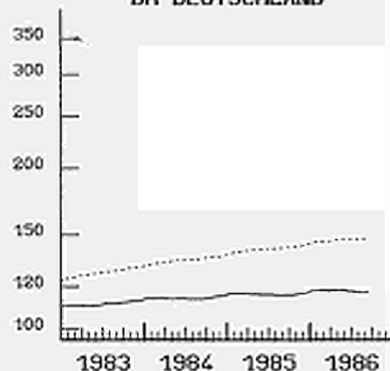
RECREATION AND EDUCATION, ETC

PRIX A LA CONSOMMATION

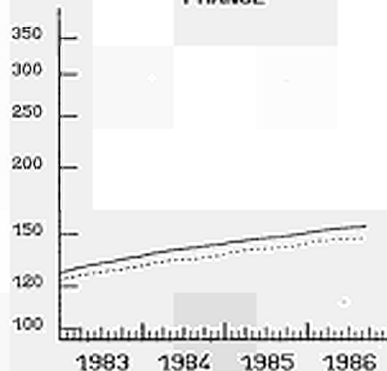
LOISIRS, SPECTACLES ENSEIGNEMENTS ETC

	EUR10	BR DEUTSCH LAND	FRANCE	ITALIA	NEDER- LAND	BELGIQUE BELGIE	LUXEM- BOURG	UNITED KINGDOM	IRELAND	DANMARK	ELLAS	ESPANA	PORTU- GAL	USA	
	PRICE INDICES								INDICES DE PRIX						
	1980 = 100														
1982 Ø	118.2	107.9	122.9	132.1	108.7	111.8	118.1	119.2	141.7	122.4	157.4	130.9	134.8	114.8	
1983 Ø	127.0	111.4	132.7	155.3	112.5	120.8	128.2	125.2	160.6	132.0	195.0	147.3	165.6	120.2	
1984 Ø	134.1	114.2	140.9	172.7	114.6	130.7	136.1	131.0	174.5	139.6	226.1	161.0	213.7	124.2	
1985 Ø	141.1	116.2	147.8	189.6	116.7	137.3	140.5	139.8	183.9	146.2	280.0	175.8	279.2	129.3	
1984 J	131.2	114.2	137.2	164.1	113.8	127.6	133.8	127.5		137.0	209.7	155.3	190.4	121.7	
1984 F	132.1	114.1	138.1	167.7	114.0	128.3	135.1	128.7	169.9	137.0	207.9	155.6	193.9	122.5	
1984 M	132.5	114.3	138.7	168.8	114.0	128.6	135.8	129.2		137.0	212.0	156.2	195.9	122.6	
1984 A	133.3	113.9	139.5	170.8	114.1	129.6	135.6	131.0		138.0	216.8	157.3	210.3	123.6	
1984 M	133.6	113.9	140.2	171.4	114.2	129.5	135.3	131.0	173.6	139.0	219.8	158.5	212.2	123.5	
1984 J	134.1	114.3	140.7	172.2	114.9	130.9	136.5	131.2		140.0	224.5	159.1	213.6	123.9	
1984 J	134.2	113.8	141.2	173.1	115.1	131.3	135.1	131.0		140.0	226.4	160.8	214.1	124.3	
1984 A	134.3	113.7	141.5	173.6	115.2	131.1	135.1	131.3	174.6	140.0	223.9	161.1	215.2	124.9	
1984 S	134.9	113.7	142.1	175.9	114.6	132.2	136.2	131.5		141.0	239.8	165.4	218.5	125.3	
1984 O	135.7	114.3	142.7	176.9	114.9	132.6	137.3	132.6		142.0	241.9	166.6	227.8	125.8	
1984 N	136.5	115.1	143.2	179.1	115.0	133.3	138.5	133.3	180.0	142.0	243.7	167.7	231.0	126.1	
1984 D	136.9	115.4	143.4	179.3	115.1	133.3	138.6	133.9		142.0	247.1	168.1	231.6	126.7	
1985 J	138.3	116.4	144.5	183.2	116.1	135.0	139.2	134.8		144.0	253.3	169.7	232.7	127.1	
1985 F	139.1	116.5	145.2	185.1	116.3	135.6	139.5	136.0	184.0	145.0	253.7	170.5	235.3	129.7	
1985 M	139.6	116.6	145.7	186.2	116.3	135.9	138.7	136.8		145.0	259.8	171.1	239.7	127.7	
1985 A	140.5	116.2	146.4	187.1	116.6	136.2	138.9	140.3		145.0	265.6	173.8	242.1	128.2	
1985 M	140.8	116.0	146.9	187.9	116.7	136.7	140.4	140.7	181.5	146.0	269.9	175.3	257.1	128.4	
1985 J	141.2	116.1	147.3	189.3	116.9	137.1	140.0	140.8		146.0	277.3	175.8	257.9	129.0	
1985 J	141.4	115.9	147.8	189.9	117.2	138.2	140.8	140.7		146.0	283.9	176.2	259.3	129.4	
1985 A	141.5	115.6	148.0	191.1	117.5	138.2	141.4	140.9	183.9	146.0	281.6	176.4	260.6	129.4	
1985 S	141.9	115.7	148.6	191.7	117.3	138.1	140.7	141.4		147.0	298.0	178.7	261.4	129.9	
1985 O	142.4	115.8	149.2	193.4	116.9	138.5	140.9	141.7		148.0	300.9	180.3	273.4	130.7	
1985 N	142.7	116.3	149.8	193.1	116.4	139.0	142.3	141.9	186.4	148.0	304.0	180.8	274.1	131.0	
1985 D	143.5	116.8	150.3	196.7	116.5	139.2	143.2	142.2		148.0	311.5	181.5	274.6	130.7	
1986 J	145.3	117.9	151.3	203.1	117.4	140.6	143.6	143.1		149.0	314.0	188.1	277.2	131.9	
1986 F	145.9	118.1	152.0	204.0	117.9	141.1	143.6	144.3	187.6	150.0	315.0	188.4	284.4	132.5	
1986 M	145.6	118.1	152.7	204.6	117.9	141.6	143.0	141.4		151.0	328.7	188.3	286.2	132.4	
1986 A	146.8	118.1	153.3	205.0	118.0	142.5	141.7	145.7		151.0	328.2	188.8	287.1	132.6	
1986 M	147.0	118.1	153.8	205.6	118.0	142.2	141.9	146.1	192.4	151.0	333.1	189.0	288.6	132.9	
1986 J	147.2	117.9	154.2	205.7	118.0	143.0	142.5	146.3		151.0	341.0	189.4	288.6	133.4	
1986 J	147.0	117.3	154.5	206.7	117.7	143.1	140.5	145.8		152.0	345.1	190.0	289.6	133.6	
1986 A	147.4	117.1	154.8	208.4	117.7	144.0	141.1	146.3	192.9	152.0	341.1	190.2	289.6	133.9	
1986 S	147.8	117.2	155.3	208.6	117.7	145.2	143.4	147.0		153.0	359.8	192.2	290.5	134.1	

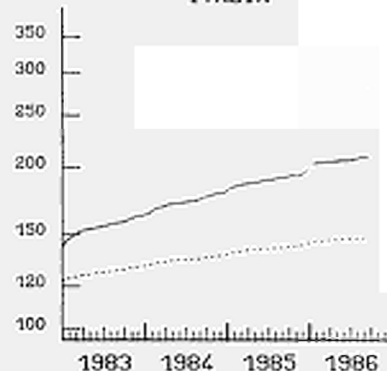
BR DEUTSCHLAND



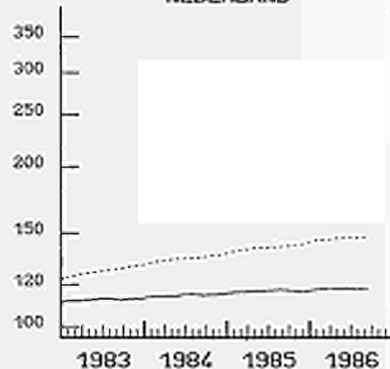
FRANCE



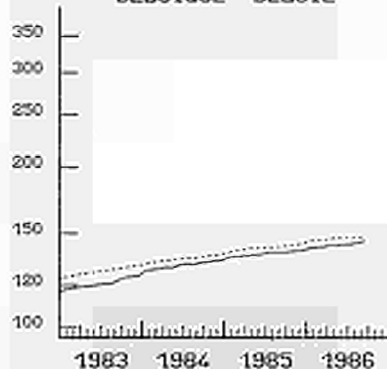
ITALIA



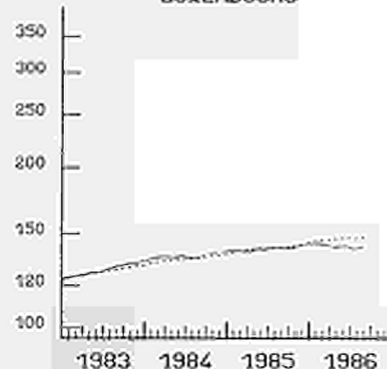
NEDERLAND



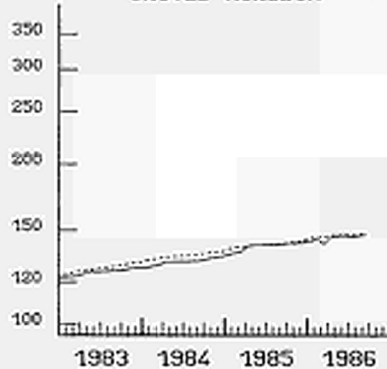
BELGIQUE BELGIE



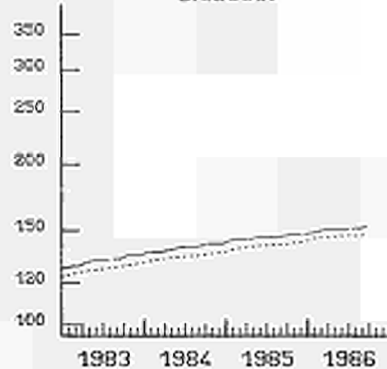
LUXEMBOURG



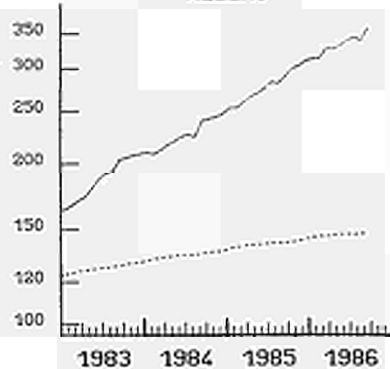
UNITED KINGDOM



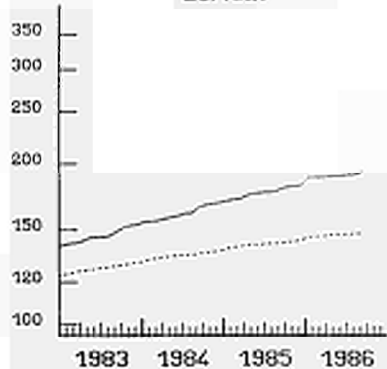
DANMARK



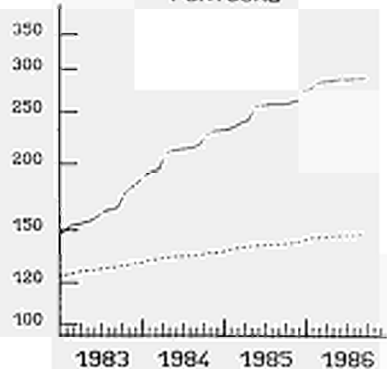
HELLAS



ESPANA



PORTUGAL



..... EUR 10

EINFACH-LOGARITHMISCHE SKALA

SÉRIE-LOGARITHMIC SCALE

ÉCHELLE SÉRIE-LOGARITHMIQUE

H1

CONSUMER PRICES
RECREATIONAL GOODSPRIX A LA CONSOMMATION
ARTICLES RECREATIFS

	EUR10	BR DEUTSCH LAND	FRANCE	ITALIA	NEDER- LAND	BELGIQUE BELGIE	LUXEM- BOURG	UNITED KINGDOM	IRELAND	DANMARK	ELLAS	ESPANA	PORTU- GAL	USA
	PRICE INDICES						1980 = 100	INDICES DE PRIX						
1982 Ø	110.2	104.7	114.2	125.9	105.1	107.4	:	107.7	124.8	118.0	128.8	120.2	:	102.2
1983 Ø	115.8	105.8	121.3	144.0	106.6	116.1	:	112.5	134.2	123.3	171.8	130.9	:	99.7
1984 Ø	120.3	106.5	127.5	157.6	107.0	122.1	:	117.3	140.5	128.5	197.4	141.2	:	96.0
1985 Ø	124.9	107.2	131.7	169.6	107.8	127.1	:	124.2	139.5	133.1	240.6	154.7	:	91.2
1984 J	118.1	106.1	124.8	152.4	106.1	119.9	:	113.9		127.0	188.2	136.1	:	98.8
1984 F	118.9	106.2	125.4	154.1	106.4	120.8	:	116.1	139.4	127.0	179.3	136.3	:	98.4
1984 M	119.1	106.3	125.9	154.5	106.4	120.8	:	115.9		127.0	192.4	137.7	:	97.5
1984 A	119.8	106.3	126.6	156.1	106.3	122.1	:	117.2		127.0	193.3	138.5	:	97.4
1984 M	120.2	106.5	127.4	157.3	106.5	121.6	:	117.4	140.3	128.0	196.2	140.1	:	96.9
1984 J	120.8	106.6	127.8	158.9	107.9	123.3	:	117.7		128.0	197.9	141.1	:	96.0
1984 J	120.5	106.6	128.2	157.5	108.2	122.8	:	117.2		128.0	197.5	141.7	:	95.4
1984 A	120.6	106.6	128.5	158.3	108.2	121.9	:	117.5	140.8	128.0	186.4	142.1	:	95.1
1984 S	120.7	106.6	128.1	158.6	106.9	122.1	:	117.7		129.0	202.2	143.0	:	94.9
1984 O	121.4	106.6	129.1	159.7	107.0	123.1	:	119.0		131.0	204.2	145.3	:	94.5
1984 N	121.8	106.8	129.3	162.0	107.0	123.5	:	118.9	141.4	131.0	209.4	146.0	:	94.1
1984 D	122.1	106.9	129.5	162.3	107.3	123.1	:	119.3		131.0	221.5	146.4	:	93.4
1985 J	122.6	106.9	129.7	163.3	107.4	125.6	:	120.6		131.0	224.7	146.9	:	93.3
1985 F	123.4	106.9	130.0	166.2	107.7	126.2	:	121.9	141.6	132.0	222.0	147.3	:	93.9
1985 M	123.8	107.0	130.4	166.7	107.4	126.6	:	123.1		132.0	225.2	147.7	:	93.7
1985 A	124.3	107.1	130.8	167.4	107.7	127.0	:	123.9		132.0	229.8	151.8	:	93.2
1985 M	124.7	107.2	131.3	168.6	108.0	127.5	:	124.4	138.5	133.0	232.7	155.7	:	92.1
1985 J	124.8	107.3	131.6	168.7	108.2	127.1	:	124.4		133.0	232.5	157.1	:	90.8
1985 J	125.1	107.4	131.9	168.9	108.4	128.5	:	124.7		133.0	235.0	157.6	:	90.8
1985 A	125.3	107.2	132.1	170.3	108.9	128.1	:	125.1	138.6	133.0	222.4	157.7	:	90.4
1985 S	125.6	107.3	132.4	170.8	108.4	126.4	:	125.7		133.0	247.3	158.1	:	89.7
1985 O	125.9	107.3	132.9	173.2	107.7	126.6	:	125.4		135.0	256.5	158.4	:	89.4
1985 N	126.4	107.5	133.4	175.1	106.8	127.7	:	125.5	139.4	135.0	272.3	158.5	:	89.0
1985 D	126.7	107.4	133.9	175.7	106.8	127.5	:	125.9		135.0	287.1	159.7	:	88.5
1986 J	127.0	107.4	134.1	174.3	107.3	129.6	:	126.7		136.0	293.2	163.6	:	88.5
1986 F	127.7	107.6	134.4	175.9	107.8	130.0	:	128.6	139.8	136.0	287.8	164.1	:	88.3
1986 M	127.9	107.6	134.9	176.6	107.8	129.8	:	128.1		136.0	306.5	162.8	:	88.4
1986 A	128.2	107.6	135.3	177.1	107.6	131.3	:	129.0		136.0	297.6	163.4	:	88.5
1986 M	128.3	107.5	135.7	177.7	107.6	130.2	:	128.9	140.8	137.0	308.1	163.7	:	88.0
1986 J	128.5	107.5	136.2	177.7	107.6	130.7	:	129.2		137.0	310.8	163.8	:	87.6
1986 J	128.2	107.4	136.3	177.7	107.0	129.4	:	128.0		137.0	313.5	163.9	:	:
1986 A	128.3	107.4	136.4	178.2	106.8	130.5	:	128.9	140.8	137.0	293.3	164.0	:	:
1986 S	128.8	107.4	136.6	178.4	106.7	131.6	:	129.7		137.0	318.4	164.5	:	:

H2

CONSUMER PRICES
RECREATIONAL SERVICESPRIX A LA CONSOMMATION
SERVICES DE LOISIRS

	EUR10	BR DEUTSCH LAND	FRANCE	ITALIA	NEDER- LAND	BELGIQUE BELGIE	LUXEM- BOURG	UNITED KINGDOM	IRELAND	DANMARK	ELLAS	ESPANA	PORTU- GAL	USA	
	PRICE INDICES							1980 = 100	INDICES DE PRIX						
1982 Ø	122.8	108.1	127.2	128.5	110.3	114.0	:	124.0	134.9	126.8	155.2	130.3	129.5	115.0	
1983 Ø	133.6	113.1	139.9	158.3	115.6	123.9	:	127.8	148.5	141.1	177.3	148.7	160.8	121.7	
1984 Ø	140.8	117.7	149.9	169.0	119.1	138.0	:	131.4	157.1	151.2	205.8	162.7	204.2	128.1	
1985 Ø	150.4	120.0	159.2	187.3	121.5	146.3	:	139.2	166.8	158.8	243.6	174.3	233.8	134.8	
1984 J	138.5	118.3	146.6	164.4	118.4	134.4	:	129.3		148.1	194.6	157.7	192.0	124.9	
1984 F	138.7	117.9	147.1	165.3	118.6	135.0	:	129.4	154.0	148.1	194.8	158.2	197.3	125.5	
1984 M	139.0	118.2	147.5	165.9	118.7	135.6	:	129.3		148.1	195.8	158.5	199.8	125.9	
1984 A	139.8	117.4	148.4	166.1	118.9	136.2	:	131.8		150.3	197.0	160.7	199.0	126.4	
1984 M	139.9	117.1	148.9	166.3	119.0	136.3	:	131.8	156.0	150.9	197.0	162.9	201.7	126.7	
1984 J	140.3	117.9	149.8	166.8	119.1	136.9	:	131.8		150.9	198.3	163.2	202.0	128.0	
1984 J	140.0	116.6	150.1	167.6	119.3	138.1	:	131.9		151.4	200.5	163.5	202.7	128.2	
1984 A	140.1	116.5	150.3	167.9	119.3	138.4	:	131.8	157.0	151.9	201.8	164.0	203.8	128.8	
1984 S	142.1	116.4	151.3	173.0	119.6	140.8	:	132.2		153.3	220.5	165.3	209.0	129.6	
1984 O	143.3	117.6	152.5	174.0	119.5	140.8	:	132.4		153.9	222.9	165.1	211.0	130.3	
1984 N	144.0	118.9	153.1	175.2	119.6	141.4	:	132.5	161.6	153.9	223.0	166.3	215.5	130.8	
1984 D	144.3	119.6	153.6	175.3	119.6	141.9	:	132.6		153.9	223.1	167.0	216.5	131.7	
1985 J	147.3	121.6	156.4	184.7	120.0	143.1	:	132.6		157.8	233.7	169.7	217.6	132.4	
1985 F	147.5	121.6	156.9	185.2	120.3	143.7	:	132.6	166.2	157.8	233.9	169.9	219.9	132.3	
1985 M	147.6	121.6	157.2	185.6	120.5	143.9	:	132.6		157.8	234.0	171.3	224.6	132.7	
1985 A	150.6	120.8	157.9	186.0	121.3	144.2	:	141.9		157.8	234.1	173.2	228.5	133.5	
1985 M	150.5	120.0	158.3	186.1	121.2	144.7	:	142.0	166.6	158.3	234.1	173.8	229.5	133.9	
1985 J	150.7	119.9	158.8	186.4	121.4	145.2	:	142.0		158.3	235.4	174.0	230.5	134.9	
1985 J	150.4	119.3	159.5	187.0	121.8	146.4	:	140.8		158.3	235.7	174.1	232.1	135.6	
1985 A	150.3	118.5	159.9	187.1	122.3	147.0	:	140.8	168.8	158.9	235.8	174.2	233.9	135.7	
1985 S	151.8	118.5	160.7	187.4	122.4	148.7	:	141.2		159.8	259.5	175.7	233.9	135.6	
1985 O	152.2	118.6	161.4	189.2	122.4	149.2	:	141.3		160.3	261.2	177.7	235.5	136.5	
1985 N	152.7	119.3	161.7	190.9	122.3	149.4	:	141.2	165.6	160.3	261.9	178.4	236.6	137.2	
1985 D	153.4	120.7	162.3	191.9	122.3	149.7	:	141.2		160.3	263.7	179.4	283.5	137.4	
1986 J	157.9	122.6	164.8	211.6	122.8	150.8	:	142.4		162.3	267.8	184.2	238.1	138.8	
1986 F	158.2	122.8	164.3	212.6	122.9	151.4	:	142.6	167.4	162.3	268.0	185.2	249.9	139.9	
1986 M	158.2	122.4	164.9	212.8	122.9	152.0	:	142.6		162.3	268.8	186.2	252.8	140.0	
1986 A	159.4	122.2	165.4	213.0	123.6	152.2	:	145.8		162.3	268.9	186.8	253.7	140.6	
1986 M	159.6	121.7	165.7	213.3	123.6	152.5	:	146.5	172.1	162.3	268.9	187.0	255.3	141.0	
1986 J	159.5	121.1	166.0	213.5	123.6	153.0	:	146.5		162.3	269.0	188.5	255.3	141.4	
1986 J	159.6	119.9	166.7	214.1	123.8	154.7	:	146.4		162.9	273.2	189.1	255.9	:	
1986 A	159.7	119.3	167.0	214.3	124.1	155.5	:	146.6	172.7	164.3	273.5	189.4	256.2	:	
1986 S	161.1	119.5	168.4	214.1	124.3	156.6	:	147.2		165.2	294.1	192.1	257.6	:	

H3

CONSUMER PRICES

BOOKS, NEWSPAPERS AND MAGAZINES

PRIX A LA CONSOMMATION

LIVRES, JOURNAUX ET PERIODIQUES

	EUR10	BR DEUTSCH LAND	FRANCE	ITALIA	NEDER- LAND	BELGIQUE BELGIE	LUXEM- BOURG	UNITED KINGDOM	IRELAND	DANMARK	ELLAS	ESPANA	PORTU- GAL	USA	
	PRICE INDICES								INDICES DE PRIX						
	1980 = 100														
1982 Ø	131.9	112.3	135.2	149.0	115.2	116.2	126.4	138.8	156.3	128.1	155.1	163.4	149.7	121.5	
1983 Ø	145.2	118.8	148.3	172.1	122.4	122.6	134.2	151.6	182.9	142.1	205.1	181.6	169.3	130.2	
1984 Ø	158.9	122.7	160.4	206.3	126.6	135.8	144.5	163.2	206.0	152.8	248.0	194.2	236.1	134.4	
1985 Ø	172.8	126.5	171.6	231.2	131.5	143.1	151.7	179.4	222.2	162.2	346.8	217.0	315.4	142.1	
1984 J	151.7	121.5	155.0	185.5	125.9	131.1	142.6	156.9		146.6	220.2	185.7	179.0	131.0	
1984 F	154.1	121.8	156.7	196.6	126.1	131.8	142.6	157.1	195.0	148.0	224.5	185.7	180.9	133.7	
1984 M	155.8	122.1	157.6	199.5	126.1	132.0	142.8	160.7		149.9	225.9	186.3	182.8	132.3	
1984 A	157.7	122.2	159.0	204.9	126.2	133.2	142.8	162.7		150.6	225.9	186.8	247.8	134.1	
1984 M	158.1	122.2	159.9	205.0	126.2	133.6	143.0	162.2	207.5	153.1	239.4	187.0	249.5	132.9	
1984 J	158.4	122.6	160.4	205.1	126.0	136.0	143.1	162.5		153.1	239.4	189.1	254.4	133.4	
1984 J	159.6	122.8	161.3	210.2	126.2	137.6	143.3	162.9		153.7	239.4	200.7	254.3	134.1	
1984 A	160.0	122.9	161.6	210.5	126.4	137.8	145.3	163.6	209.2	155.1	239.4	200.7	256.3	135.3	
1984 S	160.9	123.0	162.3	212.2	126.4	138.2	146.9	163.2		155.1	275.7	201.7	257.4	135.5	
1984 O	162.1	123.4	163.1	213.0	127.7	138.3	147.5	165.4		155.8	280.1	201.7	255.6	136.7	
1984 N	164.0	123.6	163.7	216.8	127.7	139.9	147.9	169.4	212.2	156.1	283.1	202.0	257.4	136.7	
1984 D	164.8	123.8	164.2	216.9	127.8	140.1	146.3	171.9		156.1	283.1	202.8	257.4	137.6	
1985 J	166.4	124.2	166.0	218.1	131.3	140.4	149.8	173.4		158.1	285.2	202.8	258.8	138.2	
1985 F	167.8	124.4	167.6	220.0	131.5	141.1	150.1	176.0	222.8	158.4	285.2	207.0	264.0	139.8	
1985 M	169.0	124.8	168.8	223.6	131.5	141.4	150.4	177.0		158.4	290.0	207.0	271.8	141.2	
1985 A	170.3	125.1	170.4	225.3	131.4	141.5	150.9	178.1		159.7	314.4	217.8	272.2	141.6	
1985 M	171.1	125.7	171.1	226.5	131.4	141.7	151.3	178.9	215.4	161.8	316.3	218.7	335.5	141.2	
1985 J	172.4	126.3	171.7	231.7	131.5	144.1	151.6	179.0		161.8	327.6	219.2	336.1	143.0	
1985 J	173.8	126.9	172.5	233.3	131.6	144.2	151.5	179.9		163.8	359.2	220.2	338.3	144.2	
1985 A	174.6	127.6	172.8	235.8	131.6	144.2	152.4	180.1	222.8	163.1	370.1	221.2	339.2	143.2	
1985 S	175.2	127.7	173.5	237.7	131.6	144.4	152.4	180.3		163.1	375.8	221.9	342.1	143.2	
1985 O	176.2	128.0	174.1	237.3	131.6	144.4	153.2	182.7		165.0	385.2	221.9	342.4	143.4	
1985 N	178.1	128.4	174.7	242.6	131.6	144.6	153.2	183.7	227.7	166.4	423.9	223.2	342.4	143.3	
1985 D	178.4	128.5	175.5	242.6	131.7	145.2	153.2	183.7		166.4	428.3	223.2	342.4	143.1	
1986 J	180.5	129.4	179.9	244.7	134.2	145.5	156.1	184.7		166.4	435.4	249.7	351.5	145.5	
1986 F	180.9	130.2	179.5	244.4	135.1	146.0	156.7	185.4	229.3	170.9	436.9	250.1	354.2	146.1	
1986 M	181.8	130.8	181.0	245.3	135.1	148.7	157.0	185.6		172.2	446.5	250.1	355.3	147.2	
1986 A	182.6	131.5	181.9	245.3	135.2	149.4	157.1	186.7		172.9	446.5	251.9	356.2	147.8	
1986 M	183.8	133.7	182.8	246.2	135.1	149.9	157.2	187.9	242.4	172.9	449.4	251.9	358.7	147.9	
1986 J	184.2	133.7	183.4	246.3	135.1	151.8	157.2	188.3		172.9	458.2	251.9	358.7	148.3	
1986 J	185.1	134.1	183.9	249.8	135.3	152.2	157.4	188.8		172.9	458.2	255.0	361.1	:	
1986 A	186.7	134.2	184.5	257.0	135.3	153.2	158.2	189.2	243.8	174.3	468.0	255.0	360.8	:	
1986 S	187.0	134.2	185.1	257.1	135.3	154.7	158.8	189.3		174.9	474.1	255.1	360.8	:	

CONSUMER PRICES

OTHER GOODS AND SERVICES

PRIX A LA CONSOMMATION

AUTRES BIENS ET SERVICES

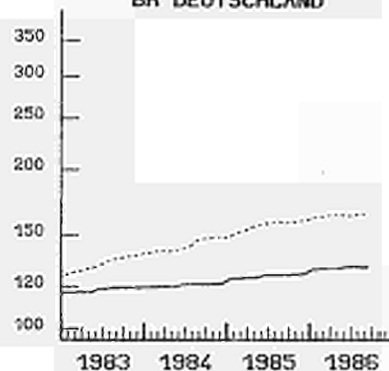
	EUR10	BR DEUTSCH LAND	FRANCE	ITALIA	NEDER- LAND	BELGIQUE BELGIE	LUXEM- BOURG	UNITED KINGDOM	IRELAND	DANMARK	ELLAS	ESPANA	PORTU- GAL	USA
	PRICE INDICES				1980 = 100				INDICES DE PRIX					
1982 Ø	123.2	113.5	127.9	140.4	109.5	113.2	114.5	116.3	151.0	120.5	165.1	133.7	142.1	124.2
1983 Ø	132.3	118.5	142.7	163.7	112.9	122.3	125.0	114.4	172.7	130.8	212.5	156.8	174.4	127.1
1984 Ø	143.4	120.8	153.2	182.1	116.1	128.8	132.8	129.1	186.0	139.9	266.7	176.2	218.2	133.4
1985 Ø	156.4	125.7	162.5	200.8	118.7	136.4	140.3	149.8	193.0	147.8	328.6	193.2	264.0	139.2
1984 J	138.6	119.9	148.6	173.4	114.7	124.0	129.3	123.2		135.0	254.4	167.4	194.1	130.2
1984 F	139.5	119.9	149.3	176.8	114.9	124.9	129.9	123.5	181.9	136.0	250.1	169.0	199.4	130.9
1984 M	140.1	120.0	149.9	177.9	115.2	125.9	131.0	124.3		136.0	257.2	172.7	201.5	131.3
1984 A	139.6	120.0	150.6	178.9	116.0	127.5	132.1	120.5		137.0	261.0	174.1	207.3	131.5
1984 M	140.3	120.0	151.7	180.1	116.1	128.0	132.6	121.1	183.4	139.0	263.2	175.5	211.7	132.4
1984 J	141.4	121.0	152.9	181.4	116.3	129.1	132.7	122.2		141.0	264.7	176.3	216.8	133.4
1984 J	142.1	121.4	154.1	182.1	116.3	131.6	133.4	122.6		141.0	267.0	177.0	221.6	134.3
1984 A	146.3	121.4	154.9	183.7	116.3	131.9	133.6	135.8	190.9	142.0	266.0	177.6	226.6	135.1
1984 S	147.4	121.4	155.4	185.2	116.5	131.4	133.9	138.4		142.0	272.9	179.1	230.2	135.5
1984 O	148.2	121.4	156.4	186.8	116.7	130.0	134.3	140.0		143.0	278.0	180.7	232.2	135.6
1984 N	149.1	121.5	156.9	188.8	116.8	129.9	135.2	141.4	188.0	143.0	282.0	182.2	235.0	135.5
1984 D	148.3	121.8	157.3	189.6	116.9	131.0	135.3	136.8		144.0	284.1	183.3	237.9	135.6
1985 J	149.2	124.1	157.8	191.4	117.0	129.7	135.9	136.9		144.0	288.4	184.7	239.4	136.2
1985 F	151.8	124.5	158.3	195.2	117.0	131.5	136.8	142.9	189.1	145.0	290.4	188.2	247.8	136.4
1985 M	152.7	124.7	159.0	196.4	117.1	131.5	137.3	144.7		145.0	297.9	189.3	258.2	137.2
1985 A	155.3	124.9	159.8	197.7	118.6	134.0	139.0	151.5		146.0	315.0	190.8	255.2	137.6
1985 M	156.5	124.9	161.9	199.6	118.8	134.2	139.5	152.9	189.8	148.0	316.2	191.8	257.1	138.3
1985 J	157.6	126.2	163.0	200.9	119.1	135.3	139.9	153.6		149.0	321.0	192.6	259.1	139.4
1985 J	158.4	126.3	163.9	201.6	119.2	139.9	141.3	154.6		149.0	321.8	193.5	263.7	140.0
1985 A	159.0	126.3	164.3	203.0	119.4	140.6	141.6	155.6	197.1	148.0	315.9	194.1	266.5	140.4
1985 S	158.3	126.3	164.8	204.3	119.5	140.3	142.2	150.5		149.0	345.9	197.0	267.6	141.0
1985 O	158.7	126.4	165.5	205.3	119.6	139.6	142.5	150.7		149.0	357.8	198.0	273.7	141.1
1985 N	159.4	126.4	165.7	206.9	119.6	139.1	143.4	151.6	196.0	150.0	381.9	198.8	275.0	141.4
1985 D	160.1	127.0	165.9	207.9	119.7	140.9	143.8	152.5		151.0	391.1	199.4	278.3	141.6
1986 J	161.4	129.3	166.2	209.5	119.8	140.9	143.9	153.7		151.0	407.2	208.4	290.3	142.6
1986 F	162.5	129.5	166.6	212.8	119.8	142.9	143.9	154.8	201.9	151.0	401.5	211.7	294.7	143.3
1986 M	163.2	129.7	167.3	214.4	119.9	143.0	144.5	155.7		152.0	407.2	213.6	299.8	143.6
1986 A	163.3	129.7	168.0	215.2	120.6	145.2	147.5	154.1		153.0	409.8	215.0	303.3	144.0
1986 M	163.8	129.9	168.7	216.6	120.7	145.7	148.3	154.3	205.5	154.0	413.1	215.6	305.8	144.4
1986 J	162.8	130.6	169.5	217.2	120.9	146.9	148.5	149.0		155.0	406.8	216.7	307.2	146.1
1986 J	163.5	130.6	170.4	217.6	120.8	150.1	148.8	149.8		155.0	407.3	218.1	308.2	146.5
1986 A	164.1	130.4	170.9	219.2	120.9	149.8	148.9	150.9	209.0	155.0	406.7	219.2	315.4	146.9
1986 S	164.8	130.4	171.4	220.2	120.9	149.1	149.7	152.1		155.0	420.9	220.2	314.9	147.1

VERBRAUCHERPREISE
SONSTIGE GÜTER UND DIENSTLEISTUNGEN

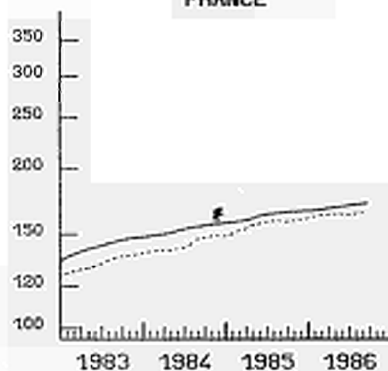
CONSUMER PRICES
OTHER GOODS AND SERVICES
1980 = 100

PRIX A LA CONSOMMATION
AUTRES BIENS ET SERVICES

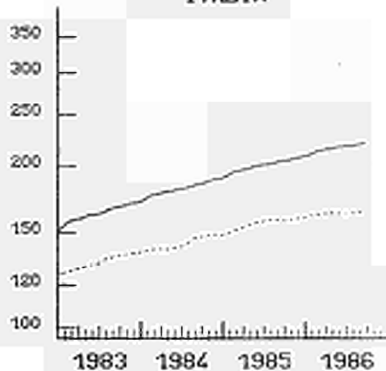
BR DEUTSCHLAND



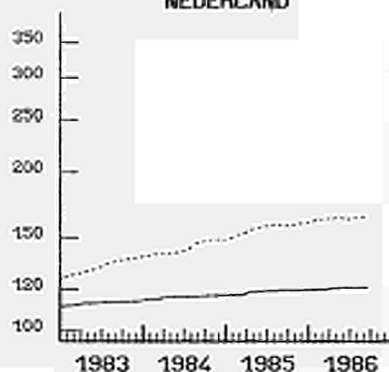
FRANCE



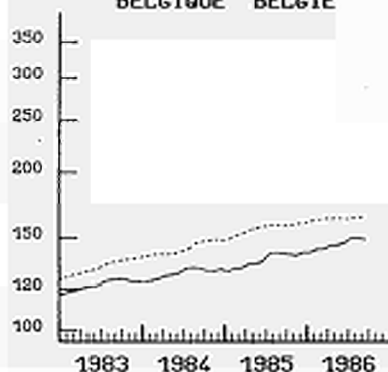
ITALIA



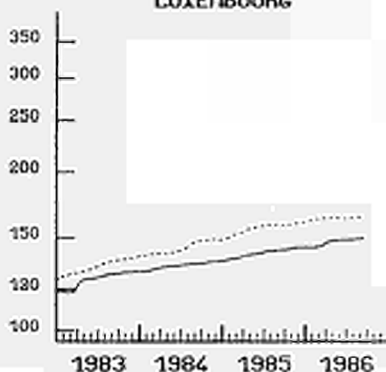
NEDERLAND



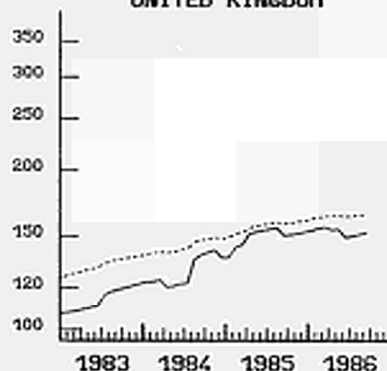
BELGIQUE BELGIE



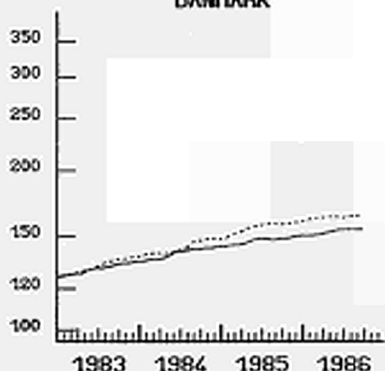
LUXEMBOURG



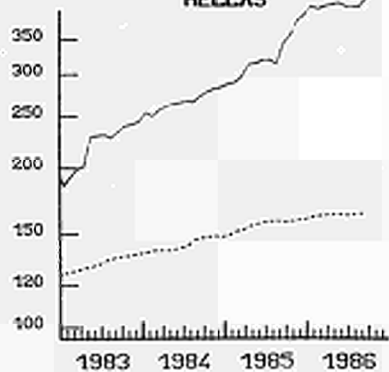
UNITED KINGDOM



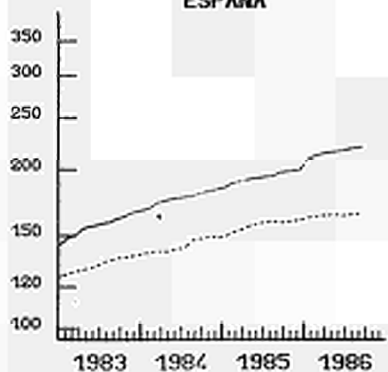
DANMARK



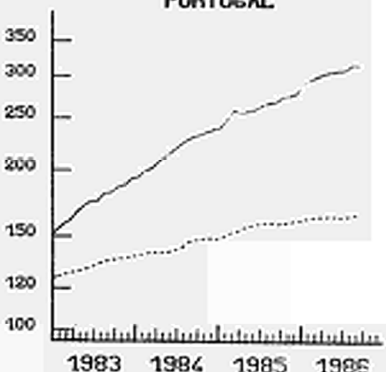
HELLAS



ESPAÑA



PORTUGAL



EINFACH-LOGARITHMISCHE SKALA

..... EUR 10
SERI-LOGARITHMIC SCALE

ECHELLE SERI-LOGARITHMIQUE

K

CONSUMER PRICES

ENERGY PRODUCTS

PRIX A LA CONSOMMATION

PRODUITS ENERGETIQUES

	EUR10	BR DEUTSCH LAND	FRANCE	ITALIA	NEDER- LAND	BELGIQUE BELGIE	LUXEM- BOURG	UNITED KINGDOM	IRELAND	DANMARK	ELLAS	ESPANA	PORTU- GAL	USA
	PRICE INDICES 1980 = 100 INDICES DE PRIX													
1982 Ø	134.4	122.7	137.8	149.7	134.6	138.3	129.1	134.0	151.6	140.8	138.0	146.4	146.7	115.2
1983 Ø	143.0	121.7	150.7	173.5	138.4	143.2	143.1	143.7	167.7	141.7	160.8	170.0	198.8	116.1
1984 Ø	150.8	124.6	162.8	191.8	144.7	154.6	151.1	147.9	178.5	142.0	185.4	188.2	262.6	117.3
1985 Ø	159.2	128.7	176.2	203.9	150.0	161.6	156.9	155.8	191.7	146.4	220.5	196.3	322.8	118.2
1984 J	148.0	125.2	155.5	189.6	144.2	151.3	149.4	144.5		140.0	168.6	184.2	221.7	115.4
1984 F	149.2	124.7	158.1	191.2	144.5	152.0	152.3	145.5	176.9	144.0	180.8	185.8	243.4	116.4
1984 M	149.0	122.9	159.3	192.5	144.1	149.4	149.7	145.8		142.0	187.0	185.8	262.3	115.8
1984 A	149.2	123.3	159.4	191.4	144.3	150.9	149.8	147.0		140.0	187.7	189.0	262.3	116.7
1984 M	149.2	123.2	159.4	190.5	144.4	151.8	149.8	147.2	175.9	140.0	187.5	189.0	262.3	118.0
1984 J	149.6	124.1	159.8	190.2	144.3	150.3	148.8	147.8		142.0	187.5	189.2	262.3	118.7
1984 J	150.3	123.4	162.4	190.2	144.4	157.4	150.0	147.9		141.0	187.6	189.2	271.4	118.6
1984 A	150.7	122.5	164.8	190.7	144.5	157.4	150.0	148.5	177.3	141.0	187.6	189.2	273.1	118.3
1984 S	151.2	123.4	165.6	190.8	145.1	157.9	150.0	148.3		143.0	187.6	189.2	273.1	118.8
1984 O	154.5	128.5	168.5	194.9	146.3	160.3	154.6	150.3		143.0	187.6	189.2	273.1	118.2
1984 N	154.6	127.4	170.3	194.9	145.3	158.4	154.5	151.0	184.1	145.0	187.6	189.2	273.1	116.8
1984 D	154.4	127.1	170.3	194.5	145.3	158.1	154.4	151.1		143.0	187.6	189.2	273.1	116.0
1985 J	156.1	128.3	172.8	197.3	148.7	159.0	152.9	151.2		144.0	207.0	192.5	303.4	114.8
1985 F	157.6	129.7	174.5	200.4	150.0	163.1	154.9	151.4	189.1	147.0	209.8	196.4	310.9	113.9
1985 M	160.6	130.8	178.6	204.8	151.8	167.1	159.0	154.8		152.0	210.6	197.1	323.6	115.4
1985 A	161.6	129.5	180.5	207.0	151.7	165.1	162.9	157.5		152.0	210.6	197.3	323.6	117.5
1985 M	161.6	129.6	180.4	206.3	152.5	164.2	158.9	158.1	194.5	150.0	210.6	197.3	323.6	119.6
1985 J	160.8	128.6	179.6	205.9	151.8	162.7	160.6	158.1		147.0	210.6	197.3	323.6	121.0
1985 J	159.8	128.1	178.4	203.7	150.9	161.4	160.7	157.3		145.0	210.6	197.3	323.6	121.1
1985 A	158.9	127.0	176.8	202.8	149.3	159.3	153.6	157.1	193.2	145.0	224.6	197.3	323.6	121.8
1985 S	158.5	127.5	173.9	202.1	149.8	161.6	152.0	156.9		143.0	232.0	197.4	323.6	119.8
1985 O	158.4	128.6	173.4	203.1	148.7	159.8	156.2	155.8		144.0	232.1	198.2	323.6	118.3
1985 N	158.6	129.2	173.4	203.3	148.1	160.5	155.5	155.6	190.1	144.0	232.8	197.6	332.3	117.7
1985 D	158.5	127.4	171.9	209.7	146.7	155.7	155.6	155.5		144.0	254.7	190.4	338.5	118.1
1986 J	155.4	123.2	166.9	206.2	146.5	150.5	150.3	155.0		142.0	261.2	192.3	349.4	117.6
1986 F	149.3	117.4	159.2	197.1	143.6	144.2	143.5	150.3	189.8	135.0	261.2	192.3	349.4	113.2
1986 M	145.7	113.2	157.5	196.2	139.5	137.5	134.8	144.5		135.0	257.6	183.8	349.4	105.6
1986 A	146.0	110.6	156.4	194.9	139.4	135.3	128.0	148.1		159.0	252.0	184.0	349.4	100.2
1986 M	144.3	108.4	156.5	194.6	139.2	130.8	125.2	144.5	178.9	160.0	252.0	184.0	336.6	101.8
1986 J	144.0	108.3	156.4	193.0	137.8	128.8	119.8	145.7		154.0	252.0	184.0	335.9	105.4
1986 J	140.0	104.0	151.6	189.1	126.1	123.8	115.5	145.0		149.0	251.2	184.0	335.9	101.5
1986 A	139.2	103.4	148.8	188.9	127.0	121.9	106.9	144.1	174.5	152.0	256.6	183.5	335.9	99.7
1986 S	140.6	104.0	150.2	189.0	126.5	123.5	107.1	147.3		154.0	262.1	183.5	335.9	99.9

L

CONSUMER PRICES

PRIX A LA CONSOMMATION

	EUR10	BR DEUTSCH LAND	FRANCE	ITALIA	NEDER- LAND	BELGIQUE BELGIE	LUXEM- BOURG	UNITED KINGDOM	IRELAND	DANMARK	ELLAS	ESPAÑA	PORTU- GAL	USA	CANADA	JAPAN
	PRICE INDICES								INDICES DE PRIX							
	1980 = 100															
1955	25.1	42.7	20.0	16.8	28.9	32.0	38.2	16.3	15.3	19.8	19.2	9.2	10.7	32.5	32.1	22.4
1956	25.8	43.7	20.4	17.4	29.7	32.9	38.4	17.2	16.0	21.0	19.9	9.7	11.0	33.0	32.5	22.5
1957	26.5	44.6	21.0	17.6	30.8	33.9	40.1	17.8	16.6	21.2	20.4	10.7	11.2	34.1	33.5	23.2
1958	27.6	45.6	24.2	18.1	31.3	34.4	40.5	18.3	17.4	21.3	20.6	12.2	11.4	35.0	34.5	23.1
1959	28.1	46.1	25.6	18.1	31.6	34.8	40.6	18.4	17.4	21.6	21.1	13.1	11.5	35.4	34.9	23.3
1960	28.6	46.7	26.6	18.4	32.3	34.9	40.8	18.6	17.5	22.0	21.4	13.4	11.7	35.9	35.2	24.0
1961	26.8	47.9	27.3	18.6	32.8	35.3	41.0	19.3	17.9	22.7	21.8	13.5	11.9	36.3	35.7	25.3
1962	28.0	49.7	28.7	19.7	33.6	35.6	41.4	20.0	18.7	24.4	21.7	14.3	12.2	36.7	36.0	27.0
1963	29.2	51.2	30.4	21.1	34.7	36.5	42.5	20.5	19.2	25.9	22.4	15.5	12.5	37.2	36.6	29.3
1964	30.4	52.4	31.4	22.4	36.7	38.0	43.9	21.1	20.4	26.7	22.6	16.6	12.9	37.7	37.4	30.4
1965	31.6	54.1	32.2	23.4	38.4	39.6	45.3	22.2	21.5	28.4	23.2	18.8	13.4	38.3	38.2	32.4
1966	32.7	56.0	33.1	23.9	40.6	41.2	46.5	23.0	22.1	30.4	24.4	20.0	14.0	39.4	39.6	34.1
1967	33.6	56.9	34.0	24.8	42.0	42.4	47.9	23.6	22.8	32.9	24.8	21.3	14.8	40.5	41.1	35.4
1968	34.7	57.8	35.5	25.1	43.6	43.6	49.1	24.7	23.9	35.5	24.9	22.3	15.7	42.2	42.7	37.3
1969	36.2	58.9	37.9	25.8	46.8	44.9	50.3	26.1	25.7	36.7	25.5	22.8	17.1	44.5	44.7	39.3
1970	38.1	61.0	39.9	27.1	48.9	49.3	52.6	27.7	27.8	39.2	26.3	24.1	18.2	47.1	46.1	42.3
1971	40.6	64.1	42.1	28.4	52.6	51.7	55.0	30.3	30.2	41.4	27.1	26.1	20.4	49.1	47.5	44.9
1972	43.1	67.7	44.6	30.0	56.8	54.7	57.9	32.5	32.9	44.1	28.3	28.3	22.5	50.7	49.7	44.9
1973	46.8	72.4	47.9	33.3	61.4	58.1	61.4	35.5	36.6	48.2	32.7	31.5	25.4	53.9	53.5	52.4
1974	53.2	77.4	54.4	39.6	67.4	65.4	67.3	41.1	42.8	55.6	41.5	36.5	31.8	59.9	59.4	65.2
1975	60.4	82.0	60.8	46.4	74.1	73.5	74.5	51.1	51.8	61.0	47.0	42.6	36.7	65.3	65.8	72.9
1976	67.1	85.6	66.6	54.1	80.8	80.2	81.8	59.6	61.1	66.4	53.3	50.2	44.5	69.1	70.8	79.7
1977	74.4	88.7	72.9	64.1	86.0	85.9	87.3	69.0	69.4	73.4	59.8	62.5	56.5	73.6	76.4	86.1
1978	80.3	91.1	79.5	71.9	89.6	89.8	90.0	74.7	74.7	81.2	67.3	74.8	69.3	79.2	83.1	89.4
1979	88.2	94.9	88.0	82.5	93.5	93.8	94.1	84.8	84.6	89.0	80.1	86.5	85.6	88.1	90.8	92.6
1980	100.0	100.0	100.0	100.0	100.0	100.0	100.0	100.0	100.0	100.0	100.0	100.0	100.0	100.0	100.0	100.0
1981	111.7	106.3	113.4	117.8	106.7	107.6	108.1	111.9	120.4	111.7	124.5	114.6	120.0	110.3	112.5	104.9
1982	123.0	111.9	126.8	137.2	112.8	117.0	118.2	121.5	141.1	123.0	150.5	131.1	147.3	117.1	124.6	107.7
1983	132.7	115.6	139.0	157.3	115.9	126.0	128.4	127.1	155.8	131.5	181.4	147.0	184.3	120.9	131.8	109.7
1984	141.2	118.4	149.2	174.3	119.6	134.0	135.7	133.4	169.2	139.8	214.6	163.5	237.5	126.1	137.6	112.1
1985	149.1	121.0	158.0	190.3	122.3	140.5	141.3	141.5	178.4	146.4	256.3	178.0	284.1	130.5	143.1	114.4

M

CONSUMER PRICE

PRIX A LA CONSOMMATION

GENERAL INDEX

INDICE GENERAL

	SWITZERLAND SUISSE SCHWEITZ	AUSTRIA AUTRICHE OESTERREICH	NORWAY NORVEGE NORGE	SWEDEN SUEDE SVERIGE	FINLAND FINLANDE SUOMI
	PRICE INDICES	1980 = 100		INDICES DE PRIX	
1955	41.8	34.1	25.2	23.3	14.6
1956	42.4	35.4	19.4	24.3	16.3
1957	43.2	36.4	25.0	25.4	18.5
1958	44.0	37.1	28.1	26.6	20.2
1959	43.6	37.5	28.7	26.8	20.5
1960	44.4	38.3	28.9	27.8	21.2
1961	45.2	39.6	29.5	28.5	21.6
1962	47.1	41.3	31.1	29.8	22.6
1963	48.7	42.5	31.9	30.6	23.7
1964	50.3	44.1	33.7	31.7	26.1
1965	51.9	46.3	35.1	33.3	27.4
1966	54.4	47.3	36.2	35.4	28.4
1967	56.6	49.2	37.9	37.0	30.0
1968	57.9	50.5	39.2	37.7	32.5
1969	59.5	52.1	40.4	38.7	33.3
1970	61.6	54.4	44.6	41.3	34.2
1971	65.6	56.9	47.5	44.5	36.4
1972	70.0	60.5	50.9	47.1	39.0
1973	76.2	65.1	54.7	50.3	43.6
1974	83.5	71.3	59.9	55.3	51.2
1975	89.1	77.3	66.8	60.7	60.3
1976	90.7	83.0	72.9	67.0	68.9
1977	92.1	87.6	79.5	74.6	77.7
1978	92.8	90.7	86.0	82.1	83.5
1979	96.1	94.0	90.2	88.0	89.6
1980	100.0	100.0	100.0	100.0	100.0
1981	106.5	106.8	113.6	112.1	111.9
1982	112.5	112.6	126.5	121.7	122.6
1983	115.8	116.3	137.2	132.5	132.8
1984	119.2	122.9	145.7	143.2	142.2
1985	123.3	126.9	154.0	153.7	150.5

CONSUMER PRICE INDICES
INDICES DES PRIX A LA CONSOMMATION

Country	Sources
DEUTSCHLAND	Preise und Preisindizes für die Lebenshaltung Reihe 7 <u>STATISTISCHES BUNDESAMT - WIESBADEN</u>
FRANCE	Indices des prix à la consommation Bulletin mensuel de statistique <u>INSEE - PARIS/FRANCE</u>
ITALIA	Indici dei prezzi al consumo <u>ISTAT - ROMA/ITALIA</u>
NEDERLAND	Maandstatistiek van de prijzen <u>C.B.S. - VOORBURG/NEDERLAND</u>
BELGIQUE BELGIE	Index van de consumptie prijzen Dienst voor het indexcijfer <u>MINISTERIE VAN ECONOMISCHE ZAKEN - BRUSSEL/BELGIE</u>
LUXEMBOURG	Indice des prix à la consommation INDICATEURS RAPIDES <u>STATEC - LUXEMBOURG</u>
UNITED KINGDOM	Retail price index <u>DEPARTMENT OF EMPLOYMENT - LONDON/UK</u>
IRELAND	Consumer Price Index <u>CENTRAL STATISTICAL OFFICE - DUBLIN/IRELAND</u>
DANMARK	Forbrugerpris indekset Prisstatistik <u>DANMARKS STATISTIK - KØBENHAVN/DANMARK</u>
ESPAÑA	Indice de precios de consumo <u>INSTITUTO NACIONAL DE ESTADISTICA - MADRID/ESPAÑA</u>
PORTUGAL	Indice de precios no consumidor <u>INSTITUTO NACIONAL DE ESTADISTICA - LISBOA/PORTUGAL</u>
GREECE	Consumer price index <u>NATIONAL STATISTICAL OFFICE OF GREECE - ATHENS/GREECE</u>
SCHWEIZ	Landesindex der Konsumentenpreise <u>BUNDESAMT FUER GEWERBE, INDUSTRIE UND ARBEIT - BERN/ SCHWEIZ</u>
OESTERREICH	Index der Verbraucherpreise <u>OESTERREICHISCHES STATISTISCHES ZENTRALAMT - WIEN/ OESTERREICH</u>

Country	Source
NORWAY	Konsumprisindeksen STATISTISK MÅNEDSHEFTE <u>STATISTISK SENTRALBYRÅ - OSLO/NORGE</u>
SWEDEN	Konsumer priserna : STATISTISKA MEDDELLAN <u>STATISTISKA CENTRALBYRÅN - STOCKHOLM/SVERIGE</u>
FINLAND	Consumer price index - Monthly bulletin <u>CENTRAL STATISTICAL OFFICE OF FINLAND - HELSINKI/Finland</u>
U.S.A.	Consumer price index - CPI-U U.S. City - Average for all urban consumers <u>U.S. BUREAU OF LABOR - WASHINGTON/USA</u>
CANADA	The consumer price index <u>STATISTICS CANADA - OTTAWA/CANADA</u>
JAPAN	Consumer price index <u>STATISTICS BUREAU</u> <u>MANAGEMENT AND COORDINATION AGENCY - TOKYO/JAPAN</u>



**Venta y suscripciones · Salg og abonnement · Verkauf und Abonnement · Πωλήσεις και συνδρομές
Sales and subscriptions · Vente et abonnements · Vendita e abbonamenti
Verkoop en abonnementen · Venda e assinaturas**

BELGIOUE/BELGIË

Moniteur belge/Belgisch Staatsblad

Rue de Louvain 40-42/Leuvensestraat 40-42
1000 Bruxelles/1000 Brussel
Tél. 512 00 26
CCP/Postrekening 000-2005502-27

Sous-dépôts/Agentschappen:

**Librairie européenne/
Europese Boekhandel**

Rue de la Loi 244/Wetstraat 244
1040 Bruxelles/1040 Brussel

CREDOC

Rue de la Montagne 34/Bergstraat 34
Bte 11/Bus 11
1000 Bruxelles/1000 Brussel

DANMARK

Schultz EF-publikationer

Møntergade 19
1116 København K
Tlf: (01) 14 11 95
Girokonto 200 11 95

BR DEUTSCHLAND

Bundesanzeiger Verlag

Breite Straße
Postfach 10 80 06
5000 Köln 1
Tel. (02 21) 20 29-0
Fernschreiber:
ANZEIGER BONN 8 882 595
Telecopierer:
20 29 278

GREECE

G.C. Eleftheroudakis SA

International Bookstore
4 Nikis Street
105 63 Athens
Tel. 322 22 55
Telex 219410 ELEF

Sub-agent for Northern Greece:

Molho's Bookstore

The Business Bookshop
10 Tsimiski Street
Thessaloniki
Tel. 275 271
Telex 412885 LIMO

ESPAÑA

Boletín Oficial del Estado

Trafalgar 27
E-28010 Madrid
Tel. (91) 446 60 00

Mundi-Prensa Libros, S.A.

Castelló 37
E-28001 Madrid
Tel. (91) 431 33 99 (Libros)
431 32 22 (Suscripciones)
435 36 37 (Dirección)
Télex 49370-MPLI-E

FRANCE

**Service de vente en France des publications
des Communautés européennes**

Journal officiel
26, rue Desaix
75732 Paris Cedex 15
Tél. (1) 45 78 61 39

IRELAND

Government Publications Sales Office

Sun Alliance House
Molesworth Street
Dublin 2
Tel. 71 03 09

or by post

Stationery Office

St Martin's House
Waterloo Road
Dublin 4
Tel. 68 90 66

ITALIA

Licosa Spa

Via Lamarmora, 45
Casella postale 552
50 121 Firenze
Tel. 57 97 51
Telex 570466 LICOSA I
CCP 343 509

Subagenti:

Libreria scientifica Lucio de Biasio - AEIOU

Via Meravigli, 16
20 123 Milano
Tel. 80 76 79

Libreria Tassi

Via A. Farnese, 28
00 192 Roma
Tel. 31 05 90

Libreria giuridica

Via 12 Ottobre, 172/R
16 121 Genova
Tel. 59 56 93

GRAND-DUCHÉ DE LUXEMBOURG

**Office des publications officielles
des Communautés européennes**

2, rue Mercier
L-2985 Luxembourg
Tél. 49 92 81
Télex PUBOF LU 1324 b
CCP 19190-81
CC bancaire BIL 8-109/6003/200

Messageries Paul Kraus

11, rue Christophe Plantin
L-2339 Luxembourg
Tél. 48 21 31
Télex 2515
CCP 49242-63

NEDERLAND

Staatsdrukkerij- en uitgeverijbedrijf

Christoffel Plantijnstraat
Postbus 20014
2500 EA 's-Gravenhage
Tel. (070) 78 99 11

PORTUGAL

Imprensa Nacional

Av. Francisco Manuel de Melo, 5
P-1000 Lisboa
Tel. 65 39 96

Distribuidora Livros Bertrand Lda.

Grupo Bertrand, SARL

Rua das Terras dos Vales, 4-A
Apart. 37
P-2700 Amadora CODEX
Tel. 493 90 50 - 494 87 88
Telex 15798 BERDIS

UNITED KINGDOM

HM Stationery Office

HMSO Publications Centre
51 Nine Elms Lane
London SW8 5DR
Tel. (01) 211 56 56

Sub-agent:

Alan Armstrong & Associates Ltd

72 Park Road
London NW1 4SH
Tel. (01) 723 39 02
Telex 297635 AAALTD G

SCHWEIZ/SUISSE/SVIZZERA

Librairie Payot

6, rue Grenus
1211 Genève
Tél. 31 89 50
CCP 12-236

UNITED STATES OF AMERICA

**European Community Information
Service**

2100 M Street, NW
Suite 707
Washington, DC 20037
Tel. (202) 862 9500

CANADA

Renouf Publishing Co., Ltd

61 Sparks Street
Ottawa
Ontario K1P 5R1
Tel. Toll Free 1 (800) 267 4164
Ottawa Region (613) 238 8985-6
Telex 053-4936

JAPAN

Kinokuniya Company Ltd

17-7 Shinjuku 3-Chome
Shinjuku-ku
Tokyo 160-91
Tel. (03) 354 0131

Journal Department

PO Box 55 Chitose
Tokyo 156
Tel. (03) 439 0124

Price (excluding VAT) in Luxembourg • Prix publics au Luxembourg (TVA exclue)

	ECU	BFR	FF	IRL	UKL	USD
Single copy • Prix par numéro	2.23	100	16	1.60	1.40	2
Subscription • Abonnement	28,96	1 300	195	20.75	17	24



KONTORET FOR DE EUROPÆISKE FÆLLESSKABERS OFFICIELLE PUBLIKATIONER
 AMT FÜR AMTLICHE VERÖFFENTLICHUNGEN DER EUROPÄISCHEN GEMEINSCHAFTEN
 ΥΠΗΡΕΣΙΑ ΕΠΙΣΗΜΩΝ ΕΚΔΟΣΕΩΝ ΤΩΝ ΕΥΡΩΠΑΪΚΩΝ ΚΟΙΝΟΤΗΤΩΝ
 OFFICE FOR OFFICIAL PUBLICATIONS OF THE EUROPEAN COMMUNITIES
 OFICINA DE LAS PUBLICACIONES OFICIALES DE LAS COMUNIDADES EUROPEAS
 OFFICE DES PUBLICATIONS OFFICIELLES DES COMMUNAUTÉS EUROPÉENNES
 UFFICIO DELLE PUBBLICAZIONI UFFICIALI DELLE COMUNITÀ EUROPEE
 BUREAU VOOR OFFICIËLE PUBLIKATIES DER EUROPESE GEMEENSCHAPPEN
 SERVIÇO DAS PUBLICAÇÕES OFICIAIS DAS COMUNIDADES EUROPEIAS

ISSN 0258-0861