

Consumer price index

9 □ 1988 Monthly

PRICES: Inflation continues in September (+0.4%)

Between August and September the rate of increase in the CPI for the Community was 0.4%, which represents a slight fall compared with August (+0.5%). This tendency was apparent in most of the member states. Greece was an exception, recording a large increase (+3.0%) in September, partly as a result of seasonal variations. In Spain, the Netherlands and Luxemburg the rates of increase were the same as last month while in Italy a slightly higher rate than in August was observed. A comparison of the September 1988 index with that of December 1987 shows that the increase for the Community during the first nine months of this year is 3.2%, which is higher than that for the same period of 1987 (2.0%). For the individual member states the increases during the first nine months of 1988 compared with 1987 vary considerably:

	1988	1987		1988	1987
Belgium	1.7	1.8	Ireland	2.1	3.0
Denmark	3.6	3.2	Italy	3.6	3.8
Germany	1.1	0.7	Luxembourg	1.4	0.2
Greece	9.3	10.1	Netherlands	0.9	0.0
Spain	4.9	3.8	Portugal	7.7	5.7
France	2.5	2.7	U. Kingdom	5.0	2.8

For five countries the rate of increase is nearly equal or even lower, whereas for the countries with low inflation (Netherlands, Luxemburg and Germany) an inflation rate of about 1.0% can be observed. The rate of increase in Denmark is slightly higher in 1988, whereas in the United Kingdom, Spain and Portugal there is an acceleration in the inflation rate. Present trends in inflation rates suggest that for the year 1988 the rate of increase will be about 3.8%, a figure which is higher than that for 1987 (2.6%). The inflation rates for the first nine months of 1988 in some non EC countries show quite significant differences: they are slightly above the EC level in the United States (3.8%) and Canada (3.3%) whereas they are below this level in Switzerland (1.2%), Austria (2.2%) and Japan (1.3%). In contrast Scandinavian countries recorded higher rises: Sweden 4.7%, Finland 5.3% and Norway 5.6%.

GENERAL INDEX EXCLUDING TOBACCO

In the framework of the Commission's program "Europe against cancer" Eurostat regularly calculates and publishes an index excluding tobacco products. The aim of this index is to make clear to the public and the social partners the effects of adjustments in taxation on tobacco products which are foreseen in the program "Europe against cancer". See pages 8,9 and 10 in this bulletin.



OFICINA ESTADÍSTICA DE LAS COMUNIDADES EUROPEAS
DE EUROPÆISKE FÆLLESSKABERS STATISTISKE KONTOR
STATISTISCHES AMT DER EUROPÄISCHEN GEMEINSCHAFTEN
ΣΤΑΤΙΣΤΙΚΗ ΥΠΗΡΕΣΙΑ ΤΩΝ ΕΥΡΩΠΑΪΚΩΝ ΚΟΙΝΟΤΗΤΩΝ
STATISTICAL OFFICE OF THE EUROPEAN COMMUNITIES
OFFICE STATISTIQUE DES COMMUNAUTÉS EUROPÉENNES
ISTITUTO STATISTICO DELLE COMUNITÀ EUROPEE
BUREAU VOOR DE STATISTIEK DER EUROPESE GEMEENSCHAPPEN
SERVIÇO DE ESTATÍSTICA DAS COMUNIDADES EUROPEIAS

L-2920 Luxembourg – Tél. 43011 – Télex : Comeur Lu 3423
B-1049 Bruxelles, bâtiment Berlaymont, rue de la Loi 200 (bureau de liaison) – Tél. 235 1111

The information included in this bulletin has been taken from the Cronos data bank, which is accessible via the different host companies. For all information about these host companies contact Eurostat in Luxembourg, tel. 4301-3220. To obtain specifications of the principal characteristics of the series contained in this bulletin contact Luxembourg,

Mr. Nijenhuis, tel. 4301-3202

Mr. Desantis, tel. 4301-3511

VERBRAUCHERPREISE
GESAMTINDEX

CONSUMER PRICES
GENERAL INDEX

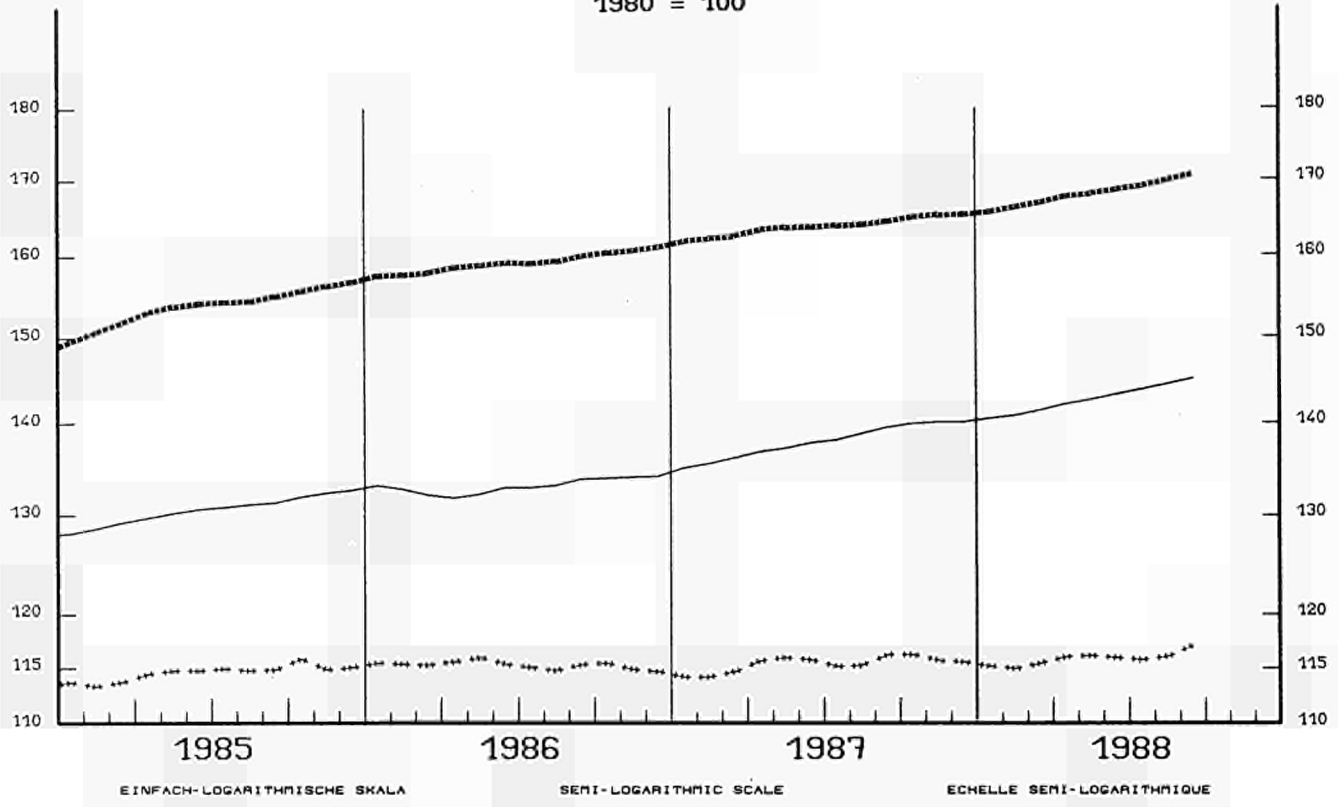
PRIX A LA CONSOMMATION
INDICE GENERAL

— USA

..... EUR 12

..... JAPAN

1980 = 100



VERÄNDERUNG × T/T-12

VARIATION × T/T-12

VARIATION × T/T-12

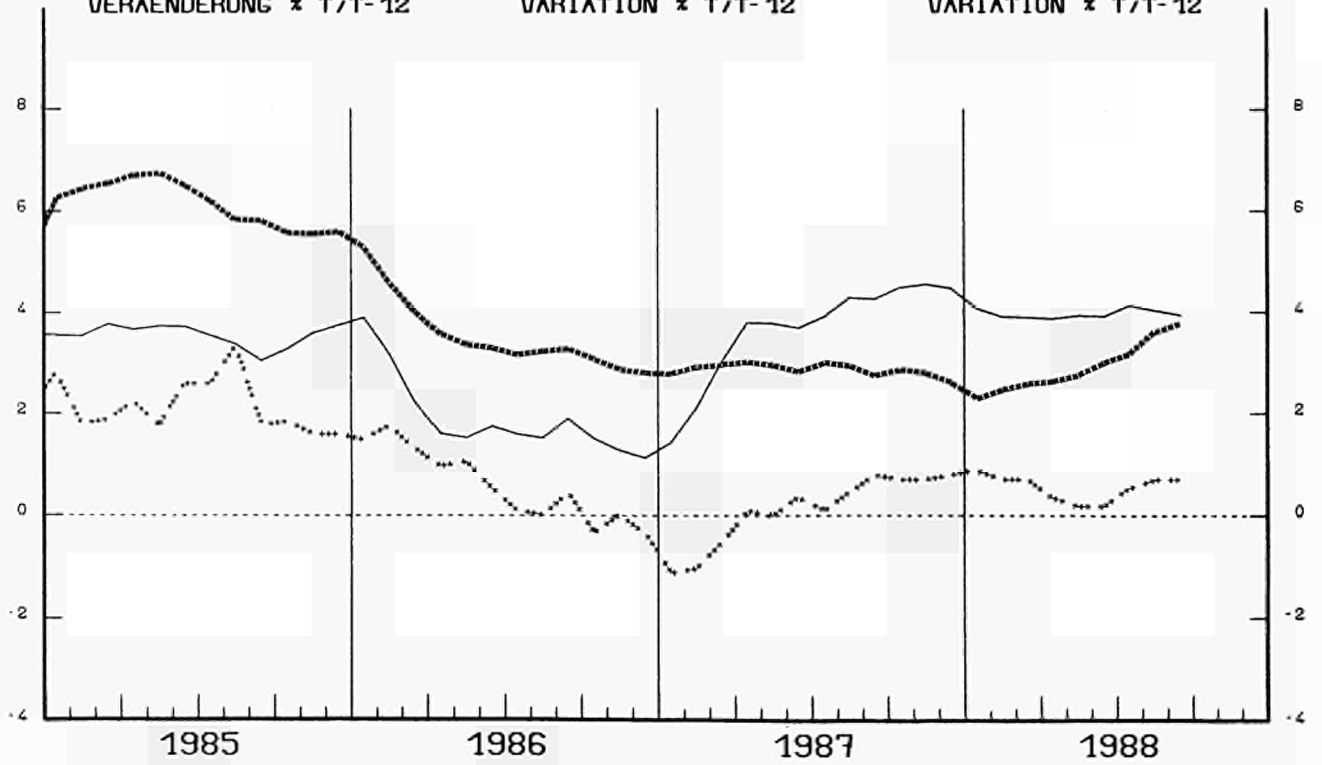


TABLE I

CONSUMER PRICES

GENERAL INDEX

	EUR 12	B	DK	D	GR	E	F	IRL	I	L	NL	P	UK	
	Price indices													
	1980=100													
1982	0	124.1	117.0	123.0	111.9	150.5	131.1	126.8	141.1	137.2	118.2	112.8	147.3	121.5
1983	0	134.8	126.0	131.5	115.6	181.0	147.0	139.0	155.8	157.3	128.4	115.9	184.3	127.1
1984	0	144.8	134.0	139.8	118.4	214.3	163.5	149.2	169.2	174.3	136.7	119.6	237.5	133.4
1985	0	153.6	140.5	146.4	121.0	255.7	176.3	158.0	178.4	190.3	142.3	122.3	284.1	141.5
1986	0	159.1	142.3	151.7	120.7	314.6	191.8	162.2	185.2	201.4	142.7	122.7	317.6	146.3
1987	0	163.7	144.5	157.8	121.0	366.1	201.9	167.3	191.0	211.0	142.7	122.5	347.2	152.4
1987														
September		164.3	145.3	159.3	120.9	371.9	206.1	168.1	:	212.9	142.7	123.0	350.2	153.2
October		164.9	145.1	160.0	121.1	383.5	207.3	168.5	:	214.7	142.8	123.6	354.2	153.9
November		165.1	144.7	160.5	121.1	386.1	206.8	168.7	191.9	215.4	143.1	123.5	355.7	154.7
December		165.2	144.7	160.6	121.3	390.9	207.6	168.8	:	215.8	143.3	123.2	360.7	154.5
1988														
January		165.5	144.6	161.3	121.5	390.3	208.9	169.1	:	216.9	143.5	122.1	363.6	154.5
February		166.1	145.0	162.6	121.8	388.5	209.5	169.4	193.3	217.9	143.6	122.3	368.8	155.1
March		166.7	145.1	163.2	121.9	400.3	211.0	169.9	:	218.8	143.9	122.8	371.4	155.7
April		167.6	145.7	163.8	122.2	408.4	210.2	170.7	:	219.4	143.8	123.3	372.7	158.3
May		168.0	145.9	165.2	122.4	409.4	210.1	171.1	194.3	220.2	144.0	123.4	374.0	158.9
June		168.5	146.1	165.1	122.6	414.7	211.0	171.6	:	220.9	144.3	123.3	375.8	159.5
July		169.0	146.6	164.4	122.5	413.7	213.7	172.2	:	221.6	144.9	123.5	378.9	159.6
August		169.8P	146.9	165.5	122.6	414.7	215.7	172.7	195.9	222.5P	145.1	123.9	384.3	161.4
September		170.5P	147.1	166.4	122.6	427.0	217.8	173.0P	:	223.6P	145.3	124.3	388.5	162.2
Rates of increase over one month (IRL 3 months)														
(T/T-1)														
1987														
Sept./August		0.2	-0.2	0.6	-0.2	2.2	0.9	0.1	:	0.6	0.1	0.5	0.3	0.3
Oct./Sept.		0.4	-0.1	0.4	0.2	3.1	0.6	0.2	:	0.8	0.0	0.5	1.2	0.5
Nov./Oct.		0.1	-0.3	0.3	0.0	0.7	-0.2	0.1	0.1	0.3	0.2	-0.1	0.4	0.5
Dec./Nov.		0.1	0.0	0.1	0.2	1.2	0.4	0.1	:	0.2	0.2	-0.2	1.4	-0.1
1988														
Jan./Dec87		0.2	-0.1	0.4	0.2	-0.2	0.6	0.2	:	0.5	0.1	-0.9	0.8	0.0
Feb./Jan.		0.3	0.3	0.8	0.2	-0.5	0.3	0.2	0.7	0.5	0.1	0.2	1.4	0.4
March/Feb.		0.4	0.0	0.4	0.1	3.0	0.7	0.3	:	0.4	0.2	0.4	0.7	0.4
April/March		0.5	0.4	0.4	0.2	2.0	-0.4	0.5	:	0.3	0.0	0.4	0.3	1.6
May/April		0.2	0.1	0.9	0.2	0.3	-0.1	0.2	0.5	0.4	0.1	0.1	0.3	0.4
June/May		0.3	0.2	-0.1	0.2	1.3	0.4	0.3	:	0.3	0.2	-0.1	0.5	0.4
July/June		0.3	0.3	-0.4	-0.1	-0.3	1.3	0.3	:	0.3	0.4	0.2	0.8	0.1
August/July		0.5P	0.2	0.7	0.1	0.3	1.0	0.3	0.8	0.4P	0.1	0.3	1.4	1.1
Sept./August		0.4P	0.1	0.5	0.0	3.0	1.0	0.2P	:	0.5P	0.1	0.3	1.1	0.5
Rates of increase over 12 months														
(T/T-12)														
1987/86														
September		2.7	1.7	3.6	0.4	14.7	4.4	3.2	:	5.1	0.3	0.6	9.3	4.2
October		2.9	1.7	3.9	0.9	15.3	4.6	3.2	:	5.6	0.2	0.3	9.8	4.5
November		2.8	1.5	4.0	1.0	15.3	4.7	3.2	3.1	5.4	0.4	0.2	9.3	4.1
December		2.6	1.4	4.1	1.0	15.7	4.6	3.1	:	5.2	0.7	0.2	8.9	3.7
1988/87														
January		2.3	0.9	4.3	0.7	14.3	4.5	2.4	:	5.1	0.6	0.7	8.5	3.3
February		2.4	1.0	5.2	0.9	13.4	4.4	2.4	2.0	5.1	0.6	0.6	8.9	3.3
March		2.6	1.0	4.7	1.0	13.2	4.5	2.5	:	5.2	0.8	0.7	8.2	3.5
April		2.7	1.0	4.7	1.0	13.0	3.9	2.5	:	5.1	1.0	0.8	8.0	3.9
May		2.8	1.0	4.6	1.1	12.5	3.9	2.5	1.9	5.0	1.2	0.8	8.3	4.2
June		3.0	1.1	4.6	1.1	11.8	4.3	2.6	:	4.9	1.5	0.9	9.2	4.6
July		3.2	1.0	4.1	1.0	13.2	4.6	2.7	:	5.1	2.0	1.1	9.7	4.8
August		3.6P	0.9	4.5	1.2	14.0	5.7	2.8	2.1	5.2P	1.8	1.2	10.0	5.7
September		3.8P	1.2	4.5	1.4	14.8	5.7	2.9P	:	5.0P	1.8	1.1	11.0	5.9

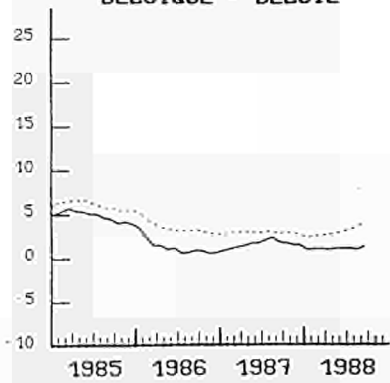
TABLE II

		CONSUMER PRICES				GENERAL INDEX			
		U.S.A	Japan	Switzerland	Oesterreich	Norge	Sverige	Finland	Canada
		Price indices				1980=100			
1982	0	117.1	107.8	112.5	112.6	126.5	121.7	122.6	124.6
1983	0	120.9	109.7	115.8	116.3	137.2	132.5	132.8	131.8
1984	0	126.1	112.3	119.2	122.9	145.7	143.2	142.2	137.6
1985	0	130.5	114.5	123.3	126.9	154.0	153.7	150.5	143.1
1986	0	133.0	115.3	124.2	129.0	165.1	160.3	156.0	148.9
1987	0	137.9	115.3	126.1	130.9	179.4	167.0	161.7	155.5
1987									
September		139.6	116.2	126.0	131.9	182.5	169.4	162.9	156.7
October		139.9	116.2	126.5	131.6	182.7	170.1	163.2	157.3
November		140.1	115.6	127.0	131.2	183.1	170.7	163.2	157.9
December		140.1	115.5	127.0	131.4	183.9	170.7	163.2	158.0
1988									
January		140.4	115.1	127.3	131.9	186.1	171.6	165.2	158.4
February		140.8	114.9	127.9	132.1	187.4	172.9	165.7	158.9
March		141.4	115.4	128.2	132.5	190.1	173.7	166.6	159.7
April		142.1	116.0	128.5	132.7	190.5	175.2	167.8	160.3
May		142.6	116.1	128.2	132.4	190.9	175.8	169.1	161.3
June		143.2	115.9	128.4	133.2	192.0	176.3	170.1	161.5
July		143.8	115.7	128.1	134.7	192.0	177.1	169.9	162.5
August		144.4	116.0	128.5	135.1	191.8	177.5	170.2	163.0
September		145.4	117.0P	128.5	134.3	194.2	178.8	171.9	163.2
1987		Rates of increase over one month (IRL 3 months)				(T/T-1)			
Sept./August		0.5	0.9	-0.2	-0.6	1.4	1.0	0.4	0.0
Oct./Setp.		0.3	0.0	0.4	-0.2	0.1	0.4	0.2	0.4
Nov./Oct.		0.1	-0.5	0.4	-0.3	0.2	0.4	0.0	0.4
Dec./Nov.		0.0	-0.1	0.0	0.1	0.4	0.0	0.0	0.1
1988									
Jan/Dec87		0.3	-0.3	0.2	0.4	1.2	0.5	1.2	0.2
Feb./Jan.		0.3	-0.2	0.5	0.2	0.7	0.8	0.3	0.4
March/Feb.		0.4	0.4	0.2	0.3	1.4	0.5	0.5	0.5
April/March		0.5	0.5	0.2	0.1	0.2	0.9	0.7	0.4
May/April		0.3	0.1	-0.2	-0.2	0.2	0.3	0.8	0.6
June/May		0.4	-0.2	0.1	0.6	0.6	0.3	0.6	0.1
July/June		0.4	-0.2	-0.2	1.2	0.0	0.5	-0.1	0.6
August/July		0.4	0.3	0.3	0.3	-0.1	0.2	0.2	0.3
Sept./August		0.7	0.9P	0.1	-0.6	1.3	0.7	1.0	0.1
1987/86		Rates of increase over 12 months				(T/T-12)			
September		4.3	0.8	1.5	1.9	7.8	5.0	3.8	4.5
October		4.5	0.7	2.0	1.8	7.5	5.1	3.8	4.3
November		4.5	0.7	2.1	1.7	7.5	5.4	3.8	4.2
December		4.4	0.8	1.9	1.7	7.4	5.2	3.6	4.2
1988/87									
January		4.0	0.9	1.5	1.9	7.0	4.4	3.8	4.1
February		3.9	0.7	1.8	2.2	6.8	5.2	3.8	4.1
March		3.9	0.7	1.8	2.3	7.2	5.5	3.8	4.1
April		3.9	0.3	1.9	2.2	7.2	6.1	4.2	4.0
May		3.9	0.2	2.3	1.7	7.1	6.4	4.8	4.1
June		4.0	0.2	2.0	1.4	7.1	6.9	5.1	3.9
July		4.1	0.5	1.8	2.1	6.8	6.1	5.0	3.8
August		4.0	0.7	1.8	1.8	6.6	5.8	4.9	4.0
September		4.2	0.7P	2.0	1.8	6.4	5.5	5.5	4.1

VERBRAUCHERPREISE
GESAMTINDEX

VEARENDERUNG * T/T-12

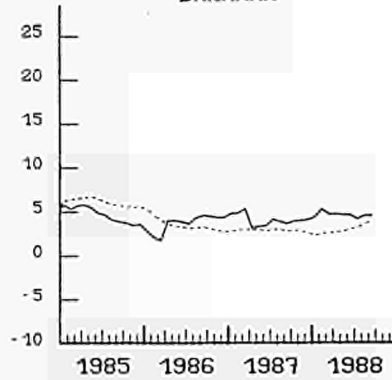
BELGIQUE - BELGIE



CONSUMER PRICES
GENERAL INDEX

VARIATION * T/T-12

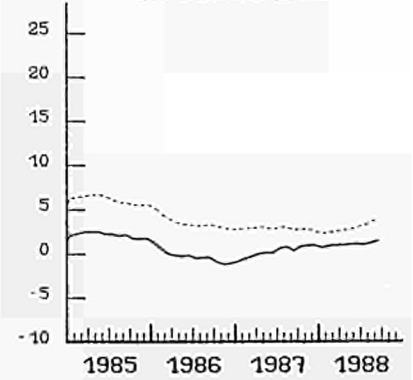
DANMARK



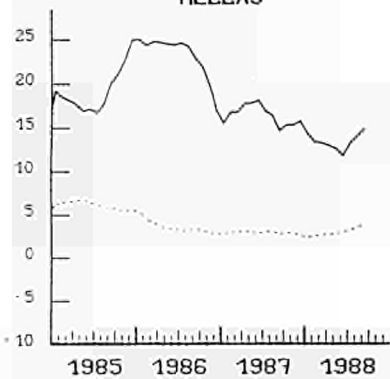
PRIX A LA CONSOMMATION
INDICE GENERAL

VARIATION * T/T-12

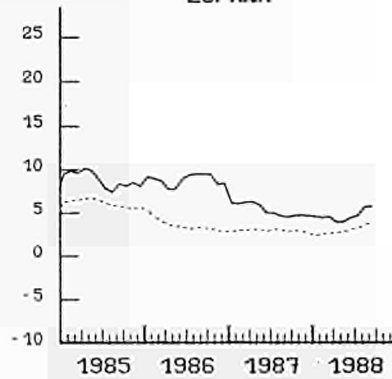
BR DEUTSCHLAND



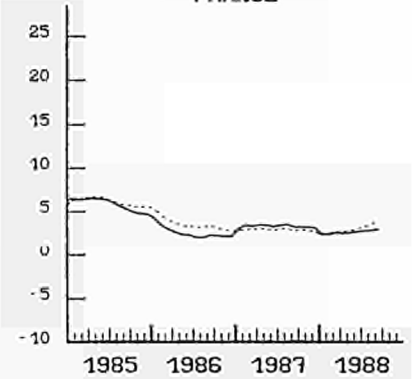
HELLAS



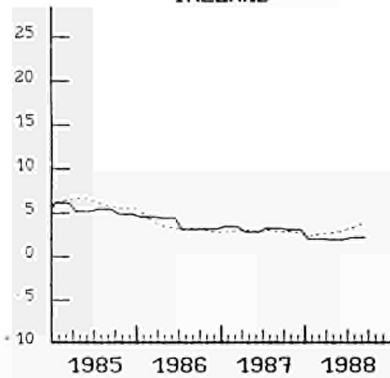
ESPAÑA



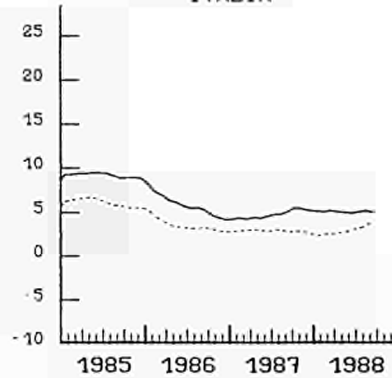
FRANCE



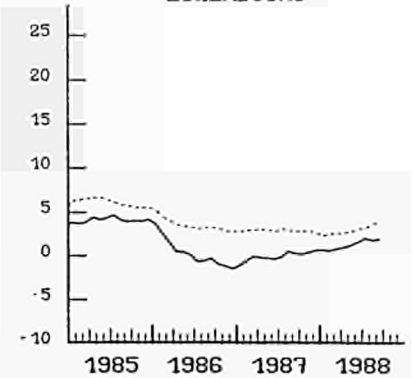
IRELAND



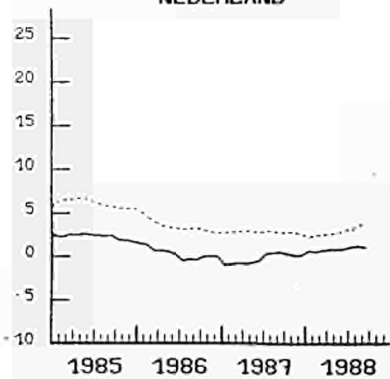
ITALIA



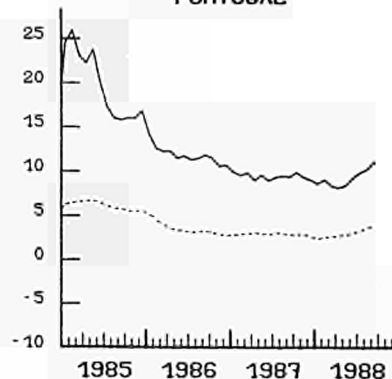
LUXEMBOURG



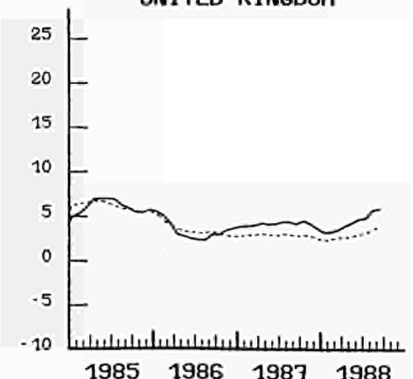
NEDERLAND



PORTUGAL



UNITED KINGDOM



----- EUR 12

EXPLANATORY NOTES

METHODOLOGY

The consumer price indices given here are the national indices which have different names in each country. As far as trends are concerned, the general index published by EUROSTAT always corresponds to the general index published by the country. The component items of this general index are groups of national indices aggregated according to a harmonized classification conforming to the ESA (European System of Integrated Economic Accounts). For these groups, the price trends correspond to the trends noted by the national indices for the same classification field. The field covered by the general index varies according to country: as regards the population concerned (specific income bracket, certain socio-professional categories or total households), the geographical areas used (capital, urban areas, country as a whole, etc.) or differences in treatments of expenditure on rent, health care, etc... Finally, there is no uniform method for seasonal adjustments. A fixed base system is used in some countries, whereas in others a chain system is used (variable weightings). The reference years used at national level for the indices vary according to country. For ease of comparison, EUROSTAT has chosen 1980 as the common year for the presentation of these indices.

THE CALCULATION OF THE EUR-12 INDEX

The Eur-12 index as calculated by EUROSTAT is a weighted average of national price indices. The weight used is the proportion of each country in the final consumption of households for EUR-12. The values of this consumption in national currency are converted into purchasing power standard (PPS); for this purpose the purchasing power parities of the G.D.P. are used. Up to 1987 purchasing power parities are those which result from the 1980 enquiry, from 1988 onwards they are those from the 1985 enquiry. The index calculated is a chain index of the "Laspeyres" type with weights changing each year. However, the weights are lagged by three years since the national accounts data needed become available only after three years. For example: the weights used for 1988 are those of 1985, for 1987 those of 1984. Moreover, national accounts data are often revised leading to revisions of the consumption weights. In order to avoid continuous modifications in the EUR-12 index for previous periods, EUROSTAT has decided to "freeze" the weights which are used. Thus the EUR-12 index will not be affected by revisions of the national accounts. However when Member States carry out major revisions in the price series for past years, EUR-12 data will be calculated using these new series.

TABLE III

CONSUMER PRICES

GENERAL INDEX EXCLUDING TOBACCO PRODUCTS

	EUR 12	B	DK	D	GR	E	F	IRL	I	L	NL	P	UK	
	General index excluding tobacco products							1980=100						
1982 0	123.5	117.0	123.6	111.8	150.8	130.8	126.6	140.0	136.7	118.0	112.8	147.3	120.7	
1983 0	134.3	125.9	131.7	115.3	181.2	146.7	138.7	154.2	156.6	128.2	115.9	184.3	126.2	
1984 0	144.2	133.9	140.0	118.2	214.5	163.3	149.1	167.3	173.7	136.4	119.4	237.6	132.1	
1985 0	153.4	140.3	146.6	120.8	256.2	176.1	158.0	175.9	189.6	141.9	122.0	284.1	140.0	
1986 0	158.8	142.0	151.7	120.4	315.4	191.5	162.0	182.1	200.7	142.2	122.4	317.3	144.5	
1987 0	163.4	144.2	157.9	120.8	367.0	201.5	167.1	187.6	210.0	142.0	122.2	346.8	150.5	
1987														
August	163.7	145.2	158.6	120.9	364.5	203.8	167.8	188.4	210.6	141.9	122.1	348.9	150.8	
September	164.1	144.9	159.5	120.7	372.8	205.8	167.9	:	212.2	142.1	122.7	349.8	151.3	
October	164.7	144.8	160.2	120.8	384.7	207.0	168.3	:	213.3	142.1	123.3	353.4	152.0	
November	164.8	144.3	160.7	120.8	387.3	206.5	168.5	188.6	214.1	142.4	123.2	354.9	152.8	
December	164.9	144.4	160.8	121.0	392.2	207.3	168.6	:	214.4	142.6	122.9	359.9	152.6	
1988														
January	165.3	144.3	161.4	121.3	390.0	208.6	168.9	:	215.5	142.8	121.8	362.9	152.6	
February	165.8	144.7	162.8	121.6	387.2	209.1	169.2	189.7	216.7	142.9	122.0	368.1	153.2	
March	166.5	144.7	163.4	121.7	399.2	210.6	169.7	:	217.5	143.2	122.5	370.8	153.8	
April	167.4	145.4	164.0	122.0	407.5	209.9	170.4	:	218.2	143.2	123.0	372.1	156.2	
May	167.8	145.4	165.5	122.2	408.5	209.7	170.7	190.7	219.0	143.2	123.1	373.4	156.8	
June	168.3	145.8	165.4	122.4	413.9	210.6	171.1	:	219.7	143.5	123.0	375.2	157.5	
July	168.7	146.2	164.6	122.3	412.5	213.3	171.7	:	220.4	144.1	123.2	378.4	157.6	
August	169.6	146.5	165.8	122.3	413.0	215.4	172.2	192.3	221.3	144.3	123.6	383.8	159.4	
Rates of increase over one month (IRL 3 months) (T/T-1)														
1987														
August/July	0.1	0.3	0.3	-0.1	-0.5	-0.1	0.2	0.6	0.3	0.3	0.2	1.1	0.3	
Sept./August	0.3	-0.2	0.6	-0.2	2.3	1.0	0.1	:	0.8	0.1	0.5	0.3	0.3	
Oct./Sept.	0.3	-0.1	0.5	0.1	3.2	0.6	0.2	:	0.5	0.0	0.5	1.0	0.5	
Nov./Oct.	0.1	-0.3	0.3	0.0	0.7	-0.2	0.1	0.1	0.4	0.2	-0.1	0.4	0.5	
Dec./Nov.	0.1	0.0	0.1	0.2	1.3	0.4	0.1	:	0.1	0.2	-0.2	1.4	-0.1	
1988														
Jan/Dec87	0.2	-0.1	0.4	0.2	-0.6	0.7	0.2	:	0.5	0.1	-0.9	0.8	0.0	
Feb./Jan.	0.3	0.3	0.8	0.2	-0.7	0.2	0.2	0.6	0.6	0.1	0.2	1.4	0.4	
March/Feb.	0.4	0.0	0.4	0.1	3.1	0.7	0.3	:	0.4	0.2	0.4	0.7	0.4	
April/March	0.5	0.5	0.4	0.2	2.1	-0.4	0.4	:	0.3	0.0	0.4	0.4	1.6	
May/April	0.2	0.1	0.9	0.2	0.3	-0.1	0.2	0.5	0.4	0.0	0.1	0.4	0.4	
June/May	0.3	0.2	-0.1	0.2	1.3	0.4	0.2	:	0.3	0.2	-0.1	0.5	0.4	
July/June	0.3	0.3	-0.4	-0.1	-0.4	1.3	0.4	:	0.3	0.4	0.2	0.8	0.1	
August/July	0.5	0.2	0.7	0.0	0.1	1.0	0.3	0.8	0.4	0.1	0.3	1.4	1.1	
Rates of increase over 12 months (T/T-12)														
1987/86														
August	3.0	2.2	4.0	0.8	16.4	4.5	3.5	3.2	4.7	0.5	0.5	9.4	4.5	
September	2.8	1.7	3.8	0.5	14.6	4.4	3.2	:	5.2	0.3	0.5	9.2	4.3	
October	2.9	1.7	4.0	0.9	15.3	4.6	3.2	:	5.2	0.2	0.3	9.6	4.6	
November	2.8	1.5	4.1	1.0	15.3	4.6	3.2	3.0	5.2	0.4	0.1	9.1	4.3	
December	2.6	1.4	4.2	1.0	15.7	4.5	3.1	:	4.9	0.6	0.1	8.7	3.8	
1988/87														
January	2.4	0.9	4.4	0.8	13.8	4.6	2.3	:	5.0	0.6	0.7	8.3	3.4	
February	2.4	1.0	5.3	0.9	12.7	4.4	2.4	1.9	4.9	0.5	0.6	8.8	3.4	
March	2.6	1.0	4.8	1.0	12.7	4.5	2.5	:	5.1	0.7	0.8	8.2	3.6	
April	2.7	1.0	4.7	1.1	12.5	3.9	2.4	:	5.0	1.0	0.8	8.0	3.9	
May	2.7	1.0	4.6	1.1	12.1	3.9	2.4	1.8	4.8	1.1	0.8	8.3	4.1	
June	3.0	1.1	4.6	1.2	11.3	4.3	2.5	:	4.8	1.5	0.9	9.1	4.6	
July	3.2	1.0	4.2	1.1	12.6	4.6	2.5	:	5.0	1.9	1.2	9.7	4.8	
August	3.6	0.9	4.5	1.2	13.3	5.7	2.6	1.9	5.1	1.7	1.2	10.0	5.7	

TABLE IV

CONSUMER PRICES

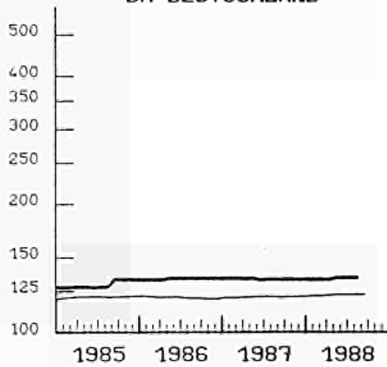
TOBACCO PRODUCTS

	EUR 12	B	DK	D	GR	E	F	IRL	I	L	NL	P	UK	
		Tobacco products							1980=100					
1982	0	135.4	117.7	106.2	118.9	138.7	151.0	137.5	165.9	160.6	130.6	111.3	148.3	142.5
1983	0	150.2	132.4	126.2	129.6	168.9	169.3	150.2	195.1	188.7	143.2	117.6	179.8	152.0
1984	0	161.4	143.0	133.9	127.5	208.3	180.4	159.5	218.0	204.1	156.8	133.9	232.7	168.6
1985	0	169.6	154.6	140.7	129.5	235.6	193.8	157.6	247.0	222.0	166.1	140.4	287.1	176.5
1986	0	184.2	167.0	151.0	133.7	279.4	217.1	167.8	271.8	235.1	178.2	141.4	340.1	201.6
1987	0	193.7	175.1	154.2	133.5	324.3	233.8	176.4	287.5	259.0	182.7	145.3	383.6	208.0
1987														
August		193.1	176.1	154.0	133.2	330.3	233.9	179.3	287.7	253.5	182.3	145.3	380.4	206.8
September		193.2	176.2	154.0	133.2	330.3	233.9	179.5	:	253.5	182.3	145.3	380.4	207.2
October		197.3	176.4	154.0	133.2	330.3	233.9	179.5	:	275.5	182.3	145.3	420.2	208.8
November		197.6	176.4	155.0	133.2	330.3	233.9	179.5	289.6	275.5	182.3	145.3	420.2	210.1
December		197.7	176.5	155.0	133.2	330.3	233.9	179.5	:	275.5	186.1	145.3	420.2	210.3
1988														
January		199.9	176.5	158.0	133.2	406.2	233.9	179.5	:	275.5	186.1	145.3	420.2	210.7
February		201.4	176.5	158.0	133.2	450.8	241.2	179.5	296.0	275.5	186.1	145.3	420.2	210.9
March		201.5	176.6	158.0	133.2	450.8	241.3	179.5	:	275.5	186.1	145.3	420.2	211.1
April		203.3	176.6	158.0	133.2	450.8	241.3	186.7	:	275.5	186.1	145.3	420.2	214.4
May		205.1	176.6	158.0	134.4	450.8	241.2	196.1	296.1	275.5	192.8	145.3	420.2	215.4
June		205.1	176.6	158.0	134.4	450.8	241.3	196.1	:	275.5	192.8	145.3	420.2	215.2
July		205.9	176.6	158.0	134.4	468.8	241.3	199.6	:	275.5	192.8	145.3	420.2	214.9
August		206.7	176.6	158.0	134.4	494.5	241.3	199.6	296.2	275.5	192.8	145.3	420.2	215.2
1987														
		Rates of increase over one month (IRL 3 months)							(T/T-1)					
August/July		0.2	0.0	0.0	0.0	0.0	0.0	2.1	0.3	0.0	0.0	0.0	0.0	-0.2
Sept./August		0.1	0.0	0.0	0.0	0.0	0.0	0.1	:	0.0	0.0	0.0	0.0	0.2
Oct./Setp.		2.1	0.1	0.0	0.0	0.0	0.0	0.0	:	8.7	0.0	0.0	10.5	0.8
Nov./Oct.		0.2	0.0	0.6	0.0	0.0	0.0	0.0	0.7	0.0	0.0	0.0	0.0	0.6
Dec./Nov.		0.0	0.0	0.0	0.0	0.0	0.0	0.0	:	0.0	2.1	0.0	0.0	0.1
1988														
Jan/Dec87		1.1	0.0	1.9	0.0	23.0	0.0	0.0	:	0.0	0.0	0.0	0.0	0.2
Feb./Jan.		0.8	0.0	0.0	0.0	11.0	3.1	0.0	2.2	0.0	0.0	0.0	0.0	0.1
March/Feb.		0.0	0.0	0.0	0.0	0.0	0.0	0.0	:	0.0	0.0	0.0	0.0	0.1
April/March		0.9	0.0	0.0	0.0	0.0	0.0	4.0	:	0.0	0.0	0.0	0.0	1.6
May/April		0.9	0.0	0.0	0.9	0.0	0.0	5.0	0.0	0.0	3.6	0.0	0.0	0.5
June/May		0.0	0.0	0.0	0.0	0.0	0.0	0.0	:	0.0	0.0	0.0	0.0	-0.1
July/June		0.4	0.0	0.0	0.0	4.0	0.0	1.8	:	0.0	0.0	0.0	0.0	-0.1
August/July		0.3	0.0	0.0	0.0	5.5	0.0	0.0	0.0	0.0	0.0	0.0	0.0	0.1
1987/86														
		Rates of increase over 12 months							(T/T-12)					
August		3.6	4.6	0.0	-0.6	17.3	5.9	4.1	5.1	7.8	-0.1	2.8	11.6	0.4
September		3.6	4.4	0.0	-0.6	17.3	5.9	4.2	:	7.8	-0.1	2.8	11.6	0.5
October		5.7	4.3	0.0	-0.6	17.3	5.9	4.2	:	17.2	-0.1	2.8	23.3	1.0
November		5.8	4.3	0.6	-0.6	17.3	5.9	4.2	5.7	17.2	-0.1	2.8	23.2	1.2
December		5.7	4.3	0.6	-0.6	17.3	5.9	4.2	:	17.2	2.0	1.4	23.2	1.2
1988/87														
January		4.9	4.1	2.6	-0.6	44.3	0.1	4.2	:	8.7	2.0	0.0	22.8	1.4
February		5.3	2.8	2.6	-0.6	46.9	3.3	4.2	3.4	8.7	2.0	0.0	22.8	1.6
March		4.7	1.3	2.6	-0.6	36.5	3.2	4.1	:	8.7	2.0	0.0	11.1	1.7
April		5.4	0.7	2.6	-0.5	36.5	3.2	6.3	:	8.7	2.0	0.0	11.1	3.4
May		6.3	0.3	2.6	0.3	36.5	3.2	11.7	3.3	8.7	5.7	0.0	10.5	3.9
June		6.4	0.3	2.6	0.9	36.5	3.2	11.7	:	8.7	5.7	0.0	10.5	3.8
July		6.9	0.3	2.6	0.9	41.9	3.2	13.7	:	8.7	5.8	0.0	10.5	3.7
August		7.0	0.3	2.6	0.9	49.7	3.2	11.3	3.0	8.7	5.8	0.0	10.5	4.1

VERBRAUCHERPREISE

TABAK

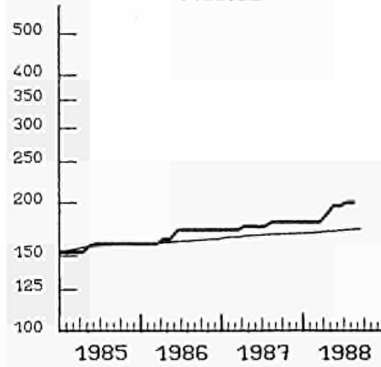
BR DEUTSCHLAND



CONSUMER PRICES

TABACCO
1980 = 100

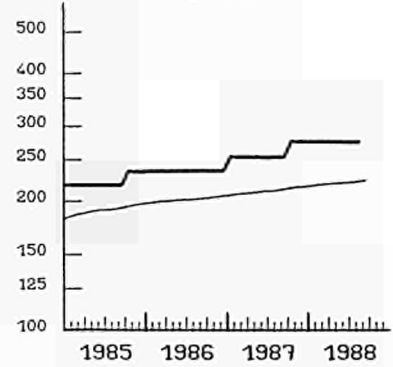
FRANCE



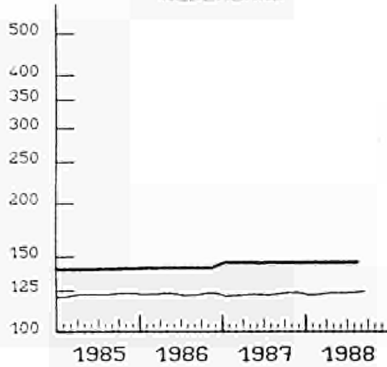
PRIX A LA CONSOMMATION

TABAC

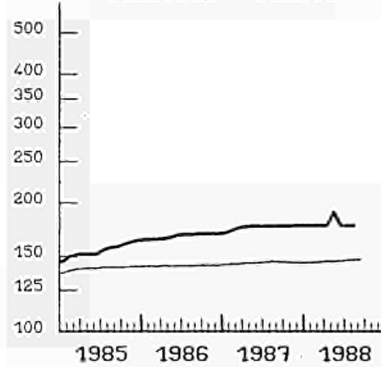
ITALIA



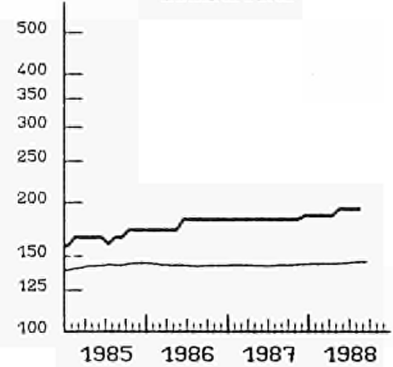
NEDERLAND



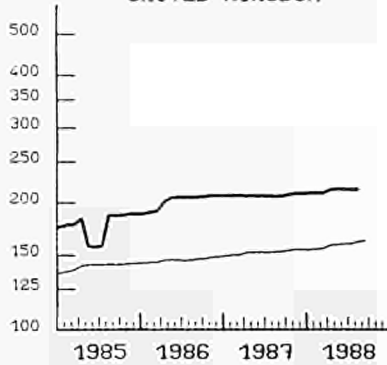
BELGIQUE - BELGIE



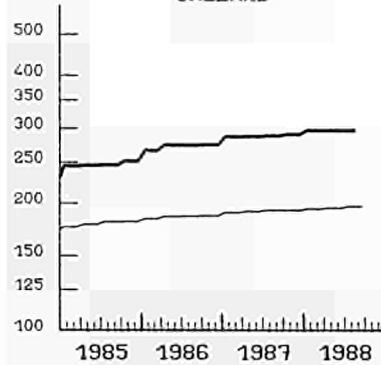
LUXEMBOURG



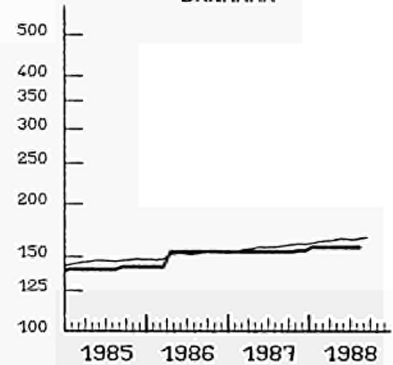
UNITED KINGDOM



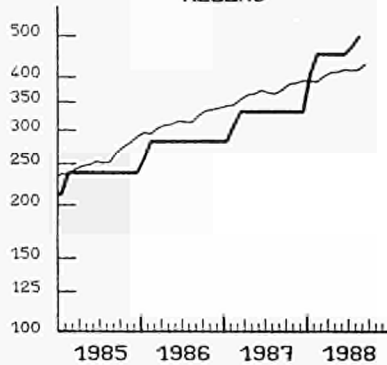
IRELAND



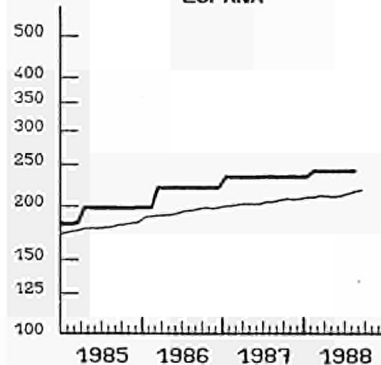
DANMARK



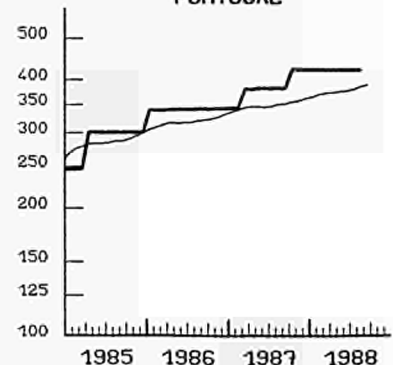
HELLAS



ESPANA



PORTUGAL



— TOBACCO
EINFACH-LOGARITHMISCHE SKALA

SEMI-LOGARITHMIC SCALE

— GENERAL
ECHELLE SEMI-LOGARITHMIQUE

Venta y suscripciones · Salg og abonnement · Verkauf und Abonnement · Πωλήσεις και συνδρομές
Sales and subscriptions · Vente et abonnements · Vendita e abbonamenti
Verkoop en abonnementen · Venda e assinaturas

BELGIQUE / BELGIË

Moniteur belge / Belgisch Staatsblad
Rue de Louvain 40-42 / Leuvensestraat 40-42
1000 Bruxelles / 1000 Brussel
Tél. 5 12 00 26
CCP / Postrekening 000-2005502-27

Sous-dépôts / Agentschappen:

**Librairie européenne /
Europese Boekhandel**
Rue de la Loi 244 / Wetstraat 244
1040 Bruxelles / 1040 Brussel

CREDOC

Rue de la Montagne 34 / Bergstraat 34
Bte 11 / Bus 11
1000 Bruxelles / 1000 Brussel

DANMARK

Schultz EF-publikationer

Møntergade 19
1116 København K
Tlf: (01) 14 11 95
Telecopier: (01) 32 75 11

BR DEUTSCHLAND

Bundesanzeiger Verlag

Breite Straße
Postfach 10 80 06
5000 Köln 1
Tel. (02 21) 20 29-0
Fernschreiber: ANZEIGER BONN 8 882 595
Telecopierer: 20 29 278

GREECE

G.C. Eleftheroudakis SA

International Bookstore
4 Nikis Street
105 63 Athens
Tel. 322 22 55
Telex 219410 ELEF

Sub-agent for Northern Greece:

Molho's Bookstore

The Business Bookshop
10 Tsimiski Street
Thessaloniki
Tel. 275 271
Telex 412885 LIMO

ESPAÑA

Boletín Oficial del Estado

Trafalgar 27
28010 Madrid
Tel. (91) 446 60 00

Mundi-Prensa Libros, S.A.

Castelló 37
28001 Madrid
Tel. (91) 431 33 99 (Libros)
431 32 22 (Suscripciones)
435 36 37 (Dirección)
Télex 49370-MPLI-E

FRANCE

Journal officiel

**Service des publications
des Communautés européennes**
26, rue Desaix
75727 Paris Cedex 15
Tél. (1) 45 78 61 39

IRELAND

Government Publications Sales Office

Sun Alliance House
Molesworth Street
Dublin 2
Tel. 71 03 09

or by post

Government Stationery Office

EEC Section
6th floor
Bishop Street
Dublin 8
Tel. 78 16 66

ITALIA

Licosa Spa

Via Lamarmora, 45
Casella postale 552
50 121 Firenze
Tel. 57 97 51
Telex 570466 LICOSA I
CCP 343 509

Subagenti:

Libreria scientifica Lucio de Biasio -AEIOU

Via Meravigli, 16
20 123 Milano
Tel. 80 76 79

Herder Editrice e Libreria

Piazza Montecitorio, 117-120
00 186 Roma
Tel. 67 94 628/67 95 304

Libreria giuridica

Via 12 Ottobre, 172/R
16 121 Genova
Tel. 59 56 93

GRAND-DUCHÉ DE LUXEMBOURG
et autres pays / and other countries

**Office des publications officielles
des Communautés européennes**

2, rue Mercier
L-2985 Luxembourg
Tél. 49 92 81
Télex PUBOF LU 1324 b
CCP 19190-81
CC bancaire BIL 8-109/6003/200
Sogenal 61-490226-96-26

Abonnements / Subscriptions

Messageries Paul Kraus

11, rue Christophe Plantin
L-2339 Luxembourg
Tél. 49 98 881
Télex 2515
CCP 49242-63

NEDERLAND

Staatsdrukkerij- en uitgeverijbedrijf

Christoffel Plantijnstraat
Postbus 20014
2500 EA 's-Gravenhage
Tel. (070) 78 98 80 (bestellingen)

PORTUGAL

**Imprensa Nacional
Casa da Moeda, E. P.**

Rua D. Francisco Manuel de Melo, 5
1092 Lisboa Codex
Tel. 69 34 14
Telex 15328 INCM

Distribuidora Livros Bertrand Lda.

Grupo Bertrand, SARL
Rua das Terras dos Vales, 4-A
Apart. 37
2700 Amadora CODEX
Tel. 493 90 50 - 494 87 88
Telex 15798 BERDIS

UNITED KINGDOM

HMSO Books (PC 16)

HMSO Publications Centre
51 Nine Elms Lane
London SW8 5DR
Tel. (01) 211 77 02

Sub-agent:

Alan Armstrong & Associates Ltd

Arkwright Road
Reading, Berks RG2 0SQ
Tel. (0734) 75 17 69
Telex 849937 AAALTD G

TÜRKIYE

Dünya süper veb ofset A.Ş.

Narlibahçe Sokak No. 15
Cağaloğlu
Istanbul
Tel: 512 01 90
Telex: 23822 dsvo-tr.

UNITED STATES OF AMERICA

**European Community Information
Service**

2100 M Street, NW
Suite 707
Washington, DC 20037
Tel. (202) 862 9500

CANADA

Renouf Publishing Co., Ltd

61 Sparks Street
Ottawa
Ontario K1P 5R1
Tel. Toll Free 1 (800) 267 4164
Ottawa Region (613) 238 8985-6
Telex 053-4936

JAPAN

Kinokuniya Company Ltd

17-7 Shinjuku 3-Chome
Shinjuku-ku
Tokyo 160-91
Tel. (03) 354 0131

Journal Department

PO Box 55 Chitose
Tokyo 156
Tel. (03) 439 0124

Price (excluding VAT) in Luxembourg

	ECU	BFR	IRL	UKL	USD
Single copy	4.40	190	3.50	3.20	5.50
Subscription	46.50	2000	36	33	55.50



OFICINA DE PUBLICACIONES OFICIALES DE LAS COMUNIDADES EUROPEAS
 KONTOR ET FOR DE EUROPÆISKE FÆLLESSKABERS OFFICIELLE PUBLIKATIONER
 AMT FÜR AMTLICHE VERÖFFENTLICHUNGEN DER EUROPÄISCHEN GEMEINSCHAFTEN
 ΥΠΗΡΕΣΙΑ ΕΠΙΣΗΜΩΝ ΕΚΔΟΣΕΩΝ ΤΩΝ ΕΥΡΩΠΑΪΚΩΝ ΚΟΙΝΟΤΗΤΩΝ
 OFFICE FOR OFFICIAL PUBLICATIONS OF THE EUROPEAN COMMUNITIES
 OFFICE DES PUBLICATIONS OFFICIELLES DES COMMUNAUTÉS EUROPÉENNES
 UFFICIO DELLE PUBBLICAZIONI UFFICIALI DELLE COMUNITÀ EUROPEE
 BUREAU VOOR OFFICIËLE PUBLIKATIES DER EUROPESE GEMEENSCHAPPEN
 SERVIÇO DAS PUBLICAÇÕES OFICIAIS DAS COMUNIDADES EUROPEIAS

ISSN 1010-2779