

Consumer price index

10 □ 1988 Monthly

PRICES: Rises continue in October (+0,5%).

For the third month in succession the CPI for the Community as a whole showed a perceptible rise: the monthly rate of increase was 0,5% in October, 0,4% in September and 0,5% in August. This increase at Community level is mainly due to substantial rises of the index in four countries: Greece 2,5%, the United Kingdom 1,0%, Portugal 0,9% and Italy 0,8%

On the other hand slight increases between 0,0% and 0,2% were recorded in the remaining countries: the rate of increase over twelve months for the Community is 3,9% which is the highest rate for 30 months. The corresponding rates for the member states are as follows: Netherlands 0,7%, Belgium and Germany (FR) 1,3%, Luxembourg 2,0%, France 3,0%, Denmark 4,2%, Italy 4,9%, Spain 5,2%, United Kingdom 6,4%, Portugal 10,7% and Greece 14,1%.

The rate for Ireland will be available only next month.

The rates for some non-Community countries are: Japan 1,3%, USA 4,2%, Canada 4,2%, Switzerland 1,8%, Austria 1,8%, Norway 6,4%, Sweden 5,9% and Finland 5,5%.

GENERAL INDEX EXCLUDING TOBACCO

In the framework of the Commission's program "Europe against cancer" Eurostat regularly calculates and publishes an index excluding tobacco products. The aim of this index is to make clear to the public and the social partners the effects of adjustments in taxation on tobacco products which are foreseen in the program "Europe against cancer". See pages 8,9 and 10 in this bulletin.



OFICINA ESTADÍSTICA DE LAS COMUNIDADES EUROPEAS
DE EUROPÆISKE FÆLLESSKABERS STATISTISKE KONTOR
STATISTISCHES AMT DER EUROPÄISCHEN GEMEINSCHAFTEN
ΣΤΑΤΙΣΤΙΚΗ ΥΠΗΡΕΣΙΑ ΤΩΝ ΕΥΡΩΠΑΪΚΩΝ ΚΟΙΝΟΤΗΤΩΝ
STATISTICAL OFFICE OF THE EUROPEAN COMMUNITIES
OFFICE STATISTIQUE DES COMMUNAUTÉS EUROPÉENNES
ISTITUTO STATISTICO DELLE COMUNITÀ EUROPEE
BUREAU VOOR DE STATISTIEK DER EUROPESE GEMEENSCHAPPEN
SERVIÇO DE ESTATÍSTICA DAS COMUNIDADES EUROPEIAS

L-2920 Luxembourg – Tél. 43011 – Télex : Comeur Lu 3423
B-1049 Bruxelles, bâtiment Berlaymont, rue de la Loi 200 (bureau de liaison) – Tél. 235 1111

The information included in this bulletin has been taken from the Cronos data bank, which is accessible via the different host companies. For all information about these host companies contact Eurostat in Luxembourg, tel. 4301-3220. To obtain specifications of the principal characteristics of the series contained in this bulletin contact Luxembourg,

Mr. Nijenhuis, tel. 4301-3202

Mr. Desantis, tel. 4301-3511

VERBRAUCHERPREISE
GESAMTINDEX

CONSUMER PRICES
GENERAL INDEX

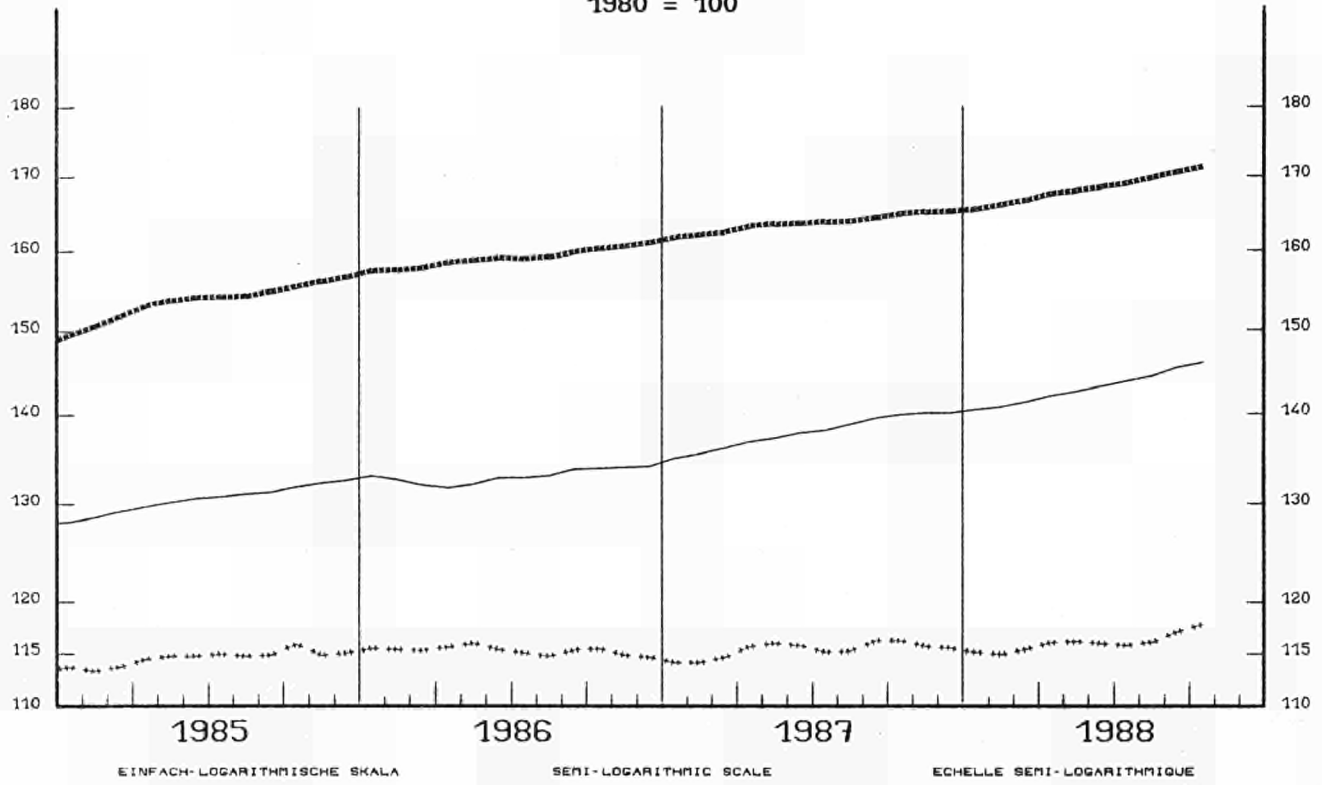
PRIX A LA CONSOMMATION
INDICE GENERAL

— USA

----- EUR 12

*** JAPAN

1980 = 100



VERÄNDERUNG % T/T-12

VARIATION % T/T-12

VARIATION % T/T-12

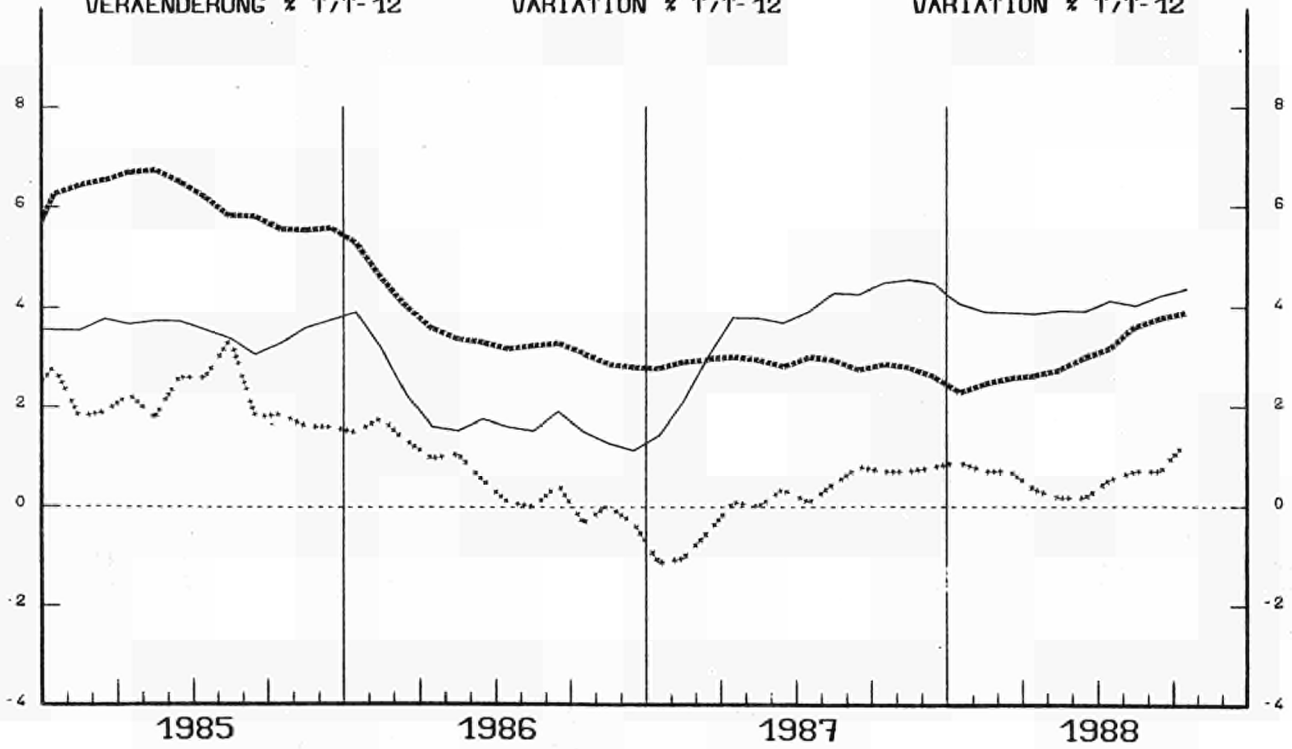


TABLE I

CONSUMER PRICES

GENERAL INDEX

	EUR 12	B	DK	D	GR	E	F	IRL	I	L	NL	P	UK	
		Price indices							1980=100					
1982	0	124.1	117.0	123.0	111.9	150.5	131.1	126.8	141.1	137.2	118.2	112.8	147.3	121.5
1983	0	134.8	126.0	131.5	115.6	181.0	147.0	139.0	155.8	157.3	128.4	115.9	184.3	127.1
1984	0	144.8	134.0	139.8	118.4	214.3	163.5	149.2	169.2	174.3	136.7	119.6	237.5	133.4
1985	0	153.6	140.5	146.4	121.0	255.7	176.3	158.0	178.4	190.3	142.3	122.3	284.1	141.5
1986	0	159.1	142.3	151.7	120.7	314.6	191.8	162.2	185.2	201.4	142.7	122.7	317.6	146.3
1987	0	163.7	144.5	157.8	121.0	366.1	201.9	167.3	191.0	211.0	142.7	122.5	347.2	152.4
1987														
October		164.9	145.1	160.0	121.1	383.5	207.3	168.5	:	214.7	142.8	123.6	354.2	153.9
November		165.1	144.7	160.5	121.1	386.1	206.8	168.7	191.9	215.4	143.1	123.5	355.7	154.7
December		165.2	144.7	160.6	121.3	390.9	207.6	168.8	:	215.8	143.3	123.2	360.7	154.5
1988														
January		165.5	144.6	161.3	121.5	390.3	208.9	169.1	:	216.9	143.5	122.1	363.6	154.5
February		166.1	145.0	162.6	121.8	388.5	209.5	169.4	193.3	217.9	143.6	122.3	368.8	155.1
March		166.7	145.1	163.2	121.9	400.3	211.0	169.9	:	218.8	143.9	122.8	371.4	155.7
April		167.6	145.7	163.8	122.2	408.4	210.2	170.7	:	219.4	143.8	123.3	372.7	158.3
May		168.0	145.9	165.2	122.4	409.4	210.1	171.1	194.3	220.2	144.0	123.4	374.0	158.9
June		168.5	146.1	165.1	122.6	414.7	211.0	171.6	:	220.9	144.3	123.3	375.8	159.5
July		169.0	146.6	164.4	122.5	413.7	213.7	172.2	:	221.6	144.9	123.5	378.9	159.6
August		169.8	146.9	165.5	122.6	414.7	215.7	172.7	195.9	222.3	145.1	123.9	384.3	161.4
September		170.5P	147.1	166.4	122.6	427.1	217.8	173.1	:	223.4P	145.3	124.3	388.5	162.2
October		171.3P	147.1	166.7	122.7	437.6	218.1	173.5P	:	225.2P	145.6	124.4	392.0	163.8
1987														
		Rates of increase over one month (IRL 3 months)							(T/T-1)					
Oct./Setp.		0.4	-0.1	0.4	0.2	3.1	0.6	0.2	:	0.8	0.0	0.5	1.2	0.5
Nov./Oct.		0.1	-0.3	0.3	0.0	0.7	-0.2	0.1	0.1	0.3	0.2	-0.1	0.4	0.5
Dec./Nov.		0.1	0.0	0.1	0.2	1.2	0.4	0.1	:	0.2	0.2	-0.2	1.4	-0.1
1988														
Jan/Dec87		0.2	-0.1	0.4	0.2	-0.2	0.6	0.2	:	0.5	0.1	-0.9	0.8	0.0
Feb./Jan.		0.3	0.3	0.8	0.2	-0.5	0.3	0.2	0.7	0.5	0.1	0.2	1.4	0.4
March/Feb.		0.4	0.0	0.4	0.1	3.0	0.7	0.3	:	0.4	0.2	0.4	0.7	0.4
April/March		0.5	0.4	0.4	0.2	2.0	-0.4	0.5	:	0.3	0.0	0.4	0.3	1.6
May/April		0.2	0.1	0.9	0.2	0.3	-0.1	0.2	0.5	0.4	0.1	0.1	0.3	0.4
June/May		0.3	0.2	-0.1	0.2	1.3	0.4	0.3	:	0.3	0.2	-0.1	0.5	0.4
July/June		0.3	0.3	-0.4	-0.1	-0.3	1.3	0.3	:	0.3	0.4	0.2	0.8	0.1
August/July		0.5	0.2	0.7	0.1	0.3	1.0	0.3	0.8	0.5	0.1	0.3	1.4	1.1
Sept./August		0.4P	0.1	0.5	0.0	3.0	1.0	0.2	:	0.5P	0.1	0.3	1.1	0.5
Oct./Setp.		0.5P	0.0	0.2	0.1	2.5	0.1	0.2P	:	0.8P	0.2	0.1	0.9	1.0
1987/86														
		Rates of increase over 12 months							(T/T-12)					
October		2.9	1.7	3.9	0.9	15.3	4.6	3.2	:	5.6	0.2	0.3	9.8	4.5
November		2.8	1.5	4.0	1.0	15.3	4.7	3.2	3.1	5.4	0.4	0.2	9.3	4.1
December		2.6	1.4	4.1	1.0	15.7	4.6	3.1	:	5.2	0.7	0.2	8.9	3.7
1988/87														
January		2.3	0.9	4.3	0.7	14.3	4.5	2.4	:	5.1	0.6	0.7	8.5	3.3
February		2.4	1.0	5.2	0.9	13.4	4.4	2.4	2.0	5.1	0.6	0.6	8.9	3.3
March		2.6	1.0	4.7	1.0	13.2	4.5	2.5	:	5.2	0.8	0.7	8.2	3.5
April		2.7	1.0	4.7	1.0	13.0	3.9	2.5	:	5.1	1.0	0.8	8.0	3.9
May		2.8	1.0	4.6	1.1	12.5	3.9	2.5	1.9	5.0	1.2	0.8	8.3	4.2
June		3.0	1.1	4.6	1.1	11.8	4.3	2.6	:	4.9	1.5	0.9	9.2	4.6
July		3.2	1.0	4.1	1.0	13.2	4.6	2.7	:	5.1	2.0	1.1	9.7	4.8
August		3.6	0.9	4.5	1.2	14.0	5.7	2.8	2.1	5.1	1.8	1.2	10.0	5.7
September		3.8P	1.2	4.5	1.4	14.8	5.7	3.0	:	4.9P	1.8	1.1	11.0	5.9
October		3.9P	1.3	4.2	1.3	14.1	5.2	3.0P	:	4.9P	2.0	0.7	10.7	6.4

TABLE II

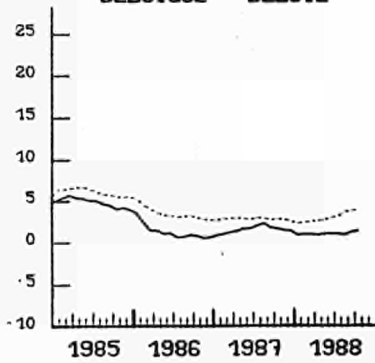
CONSUMER PRICES

GENERAL INDEX

	U.S.A	Japan	Switzerland	Austria	Norway	Sweden	Finland	Canada	
	Price indices				1980=100				
1982	0	117.1	107.8	112.5	112.6	126.5	121.7	122.6	124.6
1983	0	120.9	109.7	115.8	116.3	137.2	132.5	132.8	131.8
1984	0	126.1	112.3	119.2	122.9	145.7	143.2	142.2	137.6
1985	0	130.5	114.5	123.3	126.9	154.0	153.7	150.5	143.1
1986	0	133.0	115.3	124.2	129.0	165.1	160.3	156.0	148.9
1987	0	137.9	115.3	126.1	130.9	179.4	167.0	161.7	155.5
1987									
October		139.9	116.2	126.5	131.6	182.7	170.1	163.2	157.3
November		140.1	115.6	127.0	131.2	183.1	170.7	163.2	157.9
December		140.1	115.5	127.0	131.4	183.9	170.7	163.2	158.0
1988									
January		140.4	115.1	127.3	131.9	186.1	171.6	165.2	158.4
February		140.8	114.9	127.9	132.1	187.4	172.9	165.7	158.9
March		141.4	115.4	128.2	132.5	190.1	173.7	166.6	159.7
April		142.1	116.0	128.5	132.7	190.5	175.2	167.8	160.3
May		142.6	116.1	128.2	132.4	190.9	175.8	169.1	161.3
June		143.2	115.9	128.4	133.2	192.0	176.3	170.1	161.5
July		143.8	115.7	128.1	134.7	192.0	177.1	169.9	162.5
August		144.4	116.0	128.5	135.1	191.8	177.5	170.2	163.0
September		145.4	116.9	128.5	134.3	194.2	178.8	171.9	163.1
October		145.8	117.7P	128.8	133.9	194.4	180.2	172.1	164.0
Rates of increase over one month (IRL 3 months) (T/T-1)									
1987									
Oct./Sep.		0.3	0.0	0.4	-0.2	0.1	0.4	0.2	0.4
Nov./Oct.		0.1	-0.5	0.4	-0.3	0.2	0.4	0.0	0.4
Dec./Nov.		0.0	-0.1	0.0	0.1	0.4	0.0	0.0	0.1
1988									
Jan/Dec87		0.3	-0.3	0.2	0.4	1.2	0.5	1.2	0.2
Feb./Jan.		0.3	-0.2	0.5	0.2	0.7	0.8	0.3	0.4
March/Feb.		0.4	0.4	0.2	0.3	1.4	0.5	0.5	0.5
April/March		0.5	0.5	0.2	0.1	0.2	0.9	0.7	0.4
May/April		0.3	0.1	-0.2	-0.2	0.2	0.3	0.8	0.6
June/May		0.4	-0.2	0.1	0.6	0.6	0.3	0.6	0.1
July/June		0.4	-0.2	-0.2	1.2	0.0	0.5	-0.1	0.6
August/July		0.4	0.3	0.3	0.3	-0.1	0.2	0.2	0.3
Sept./August		0.7	0.8	0.1	-0.6	1.3	0.7	1.0	0.1
Oct./Sep.		0.3	0.7P	0.2	-0.3	0.1	0.8	0.1	0.5
Rates of increase over 12 months (T/T-12)									
1987/86									
October		4.5	0.7	2.0	1.8	7.5	5.1	3.8	4.3
November		4.5	0.7	2.1	1.7	7.5	5.4	3.8	4.2
December		4.4	0.8	1.9	1.7	7.4	5.2	3.6	4.2
1988/87									
January		4.0	0.9	1.5	1.9	7.0	4.4	3.8	4.1
February		3.9	0.7	1.8	2.2	6.8	5.2	3.8	4.1
March		3.9	0.7	1.8	2.3	7.2	5.5	3.8	4.1
April		3.9	0.3	1.9	2.2	7.2	6.1	4.2	4.0
May		3.9	0.2	2.3	1.7	7.1	6.4	4.8	4.1
June		4.0	0.2	2.0	1.4	7.1	6.9	5.1	3.9
July		4.1	0.5	1.8	2.1	6.8	6.1	5.0	3.8
August		4.0	0.7	1.8	1.8	6.6	5.8	4.9	4.0
September		4.2	0.6	2.0	1.9	6.4	5.5	5.5	4.1
October		4.2	1.3P	1.8	1.8	6.4	5.9	5.5	4.2

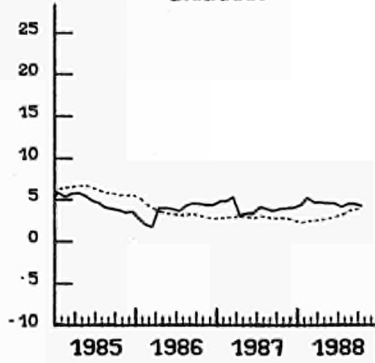
VERBRAUCHERPREISE
GESAMTINDEX
 VÄRENDERUNG * T/T-12

BELGIQUE - BELGIE



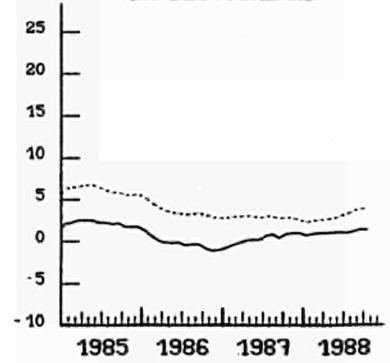
CONSUMER PRICES
GENERAL INDEX
 VARIATION * T/T-12

DANMARK

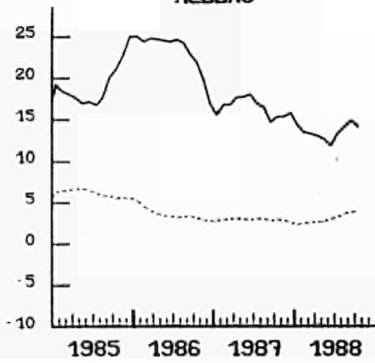


PRIX A LA CONSOMMATION
INDICE GENERAL
 VARIATION * T/T-12

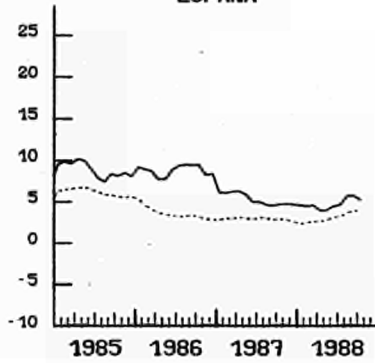
BR DEUTSCHLAND



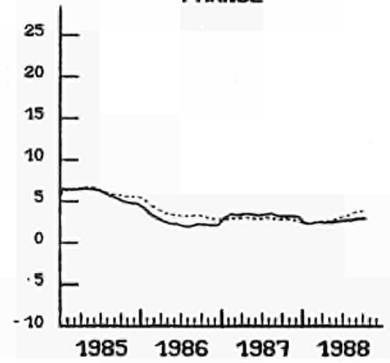
HELLAS



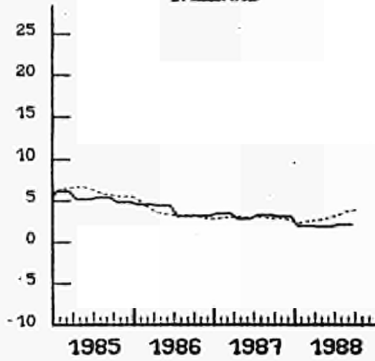
ESPAÑA



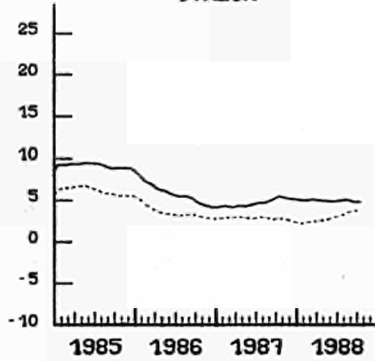
FRANCE



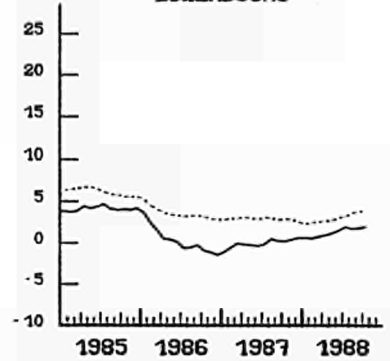
IRELAND



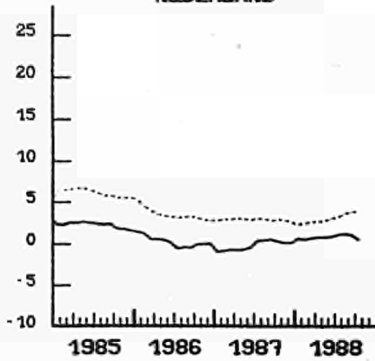
ITALIA



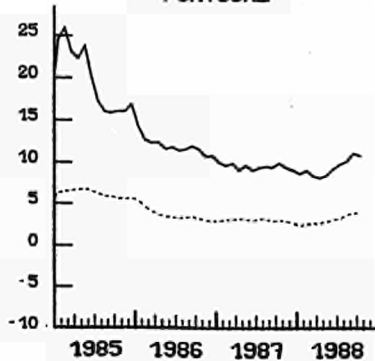
LUXEMBOURG



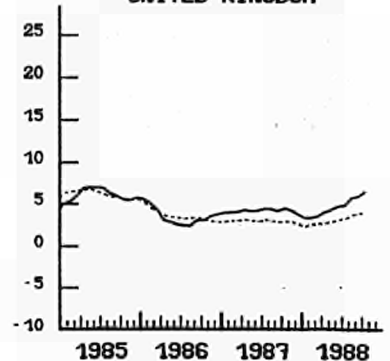
NEDERLAND



PORTUGAL



UNITED KINGDOM



----- EUR 12

EXPLANATORY NOTES

METHODOLOGY

The consumer price indices given here are the national indices which have different names in each country. As far as trends are concerned, the general index published by EUROSTAT always corresponds to the general index published by the country. The component items of this general index are groups of national indices aggregated according to a harmonized classification conforming to the ESA (European System of Integrated Economic Accounts). For these groups, the price trends correspond to the trends noted by the national indices for the same classification field. The field covered by the general index varies according to country: as regards the population concerned (specific income bracket, certain socio-professional categories or total households), the geographical areas used (capital, urban areas, country as a whole, etc.) or differences in treatments of expenditure on rent, health care, etc... Finally, there is no uniform method for seasonal adjustments. A fixed base system is used in some countries, whereas in others a chain system is used (variable weightings). The reference years used at national level for the indices vary according to country. For ease of comparison, EUROSTAT has chosen 1980 as the common year for the presentation of these indices.

THE CALCULATION OF THE EUR-12 INDEX

The Eur-12 index as calculated by EUROSTAT is a weighted average of national price indices. The weight used is the proportion of each country in the final consumption of households for EUR-12. The values of this consumption in national currency are converted into purchasing power standard (PPS); for this purpose the purchasing power parities of the G.D.P. are used. Up to 1987 purchasing power parities are those which result from the 1980 enquiry, from 1988 onwards they are those from the 1985 enquiry. The index calculated is a chain index of the "Laspeyres" type with weights changing each year. However, the weights are lagged by three years since the national accounts data needed become available only after three years. For example: the weights used for 1988 are those of 1985, for 1987 those of 1984. Moreover, national accounts data are often revised leading to revisions of the consumption weights. In order to avoid continuous modifications in the EUR-12 index for previous periods, EUROSTAT has decided to "freeze" the weights which are used. Thus the EUR-12 index will not be affected by revisions of the national accounts. However when Member States carry out major revisions in the price series for past years, EUR-12 data will be calculated using these new series.

TABLE III

CONSUMER PRICES

GENERAL INDEX EXCLUDING TOBACCO PRODUCTS

	EUR 12	B	DK	D	GR	E	F	IRL	I	L	NL	P	UK
	General index excluding tobacco products												
	1980=100												
1982	123.5	117.0	123.6	111.8	150.8	130.8	126.6	140.0	136.7	118.0	112.8	147.3	120.7
1983	134.3	125.9	131.7	115.3	181.2	146.7	138.7	154.2	156.6	128.2	115.9	184.3	126.2
1984	144.2	133.9	140.0	118.2	214.5	163.3	149.1	167.3	173.7	136.4	119.4	237.6	132.1
1985	153.4	140.3	146.6	120.8	256.2	176.1	158.0	175.9	189.6	141.9	122.0	284.1	140.0
1986	158.8	142.0	151.7	120.4	315.4	191.5	162.0	182.1	200.7	142.2	122.4	317.3	144.5
1987	163.4	144.2	157.9	120.8	367.0	201.5	167.1	187.6	210.0	142.0	122.2	346.8	150.5
1987													
September	164.1	144.9	159.5	120.7	372.8	205.8	167.9	:	212.2	142.1	122.7	349.8	151.3
October	164.7	144.8	160.2	120.8	384.7	207.0	168.3	:	213.3	142.1	123.3	353.4	152.0
November	164.8	144.3	160.7	120.8	387.3	206.5	168.5	188.6	214.1	142.4	123.2	354.9	152.8
December	164.9	144.4	160.8	121.0	392.2	207.3	168.6	:	214.4	142.6	122.9	359.9	152.6
1988													
January	165.3	144.3	161.4	121.3	390.0	208.6	168.9	:	215.5	142.8	121.8	362.9	152.6
February	165.8	144.7	162.8	121.6	387.2	209.1	169.2	189.7	216.7	142.9	122.0	368.1	153.2
March	166.5	144.7	163.4	121.7	399.2	210.6	169.7	:	217.5	143.2	122.5	370.8	153.8
April	167.4	145.4	164.0	122.0	407.5	209.9	170.4	:	218.2	143.2	123.0	372.1	156.2
May	167.8	145.4	165.5	122.2	408.5	209.7	170.7	190.7	219.0	143.2	123.1	373.4	156.8
June	168.3	145.8	165.4	122.4	413.9	210.6	171.1	:	219.7	143.5	123.0	375.2	157.5
July	168.7	146.2	164.6	122.3	412.5	213.3	171.7	:	220.1	144.1	123.2	378.4	157.6
August	169.5	146.5	165.8	122.3	413.0	215.4	172.2	192.3	221.1	144.3	123.6	383.8	159.4
September	170.3P	146.7	166.7	122.4	425.6P	217.5P	172.6	:	222.2P	144.5	124.0	388.1	160.3
Rates of increase over one month (IRL 3 months)													
(T/T-1)													
1987													
Sept./August	0.3	-0.2	0.6	-0.2	2.3	1.0	0.1	:	0.8	0.1	0.5	0.3	0.3
Oct./Sept.	0.3	-0.1	0.5	0.1	3.2	0.6	0.2	:	0.5	0.0	0.5	1.0	0.5
Nov./Oct.	0.1	-0.3	0.3	0.0	0.7	-0.2	0.1	0.1	0.4	0.2	-0.1	0.4	0.5
Dec./Nov.	0.1	0.0	0.1	0.2	1.3	0.4	0.1	:	0.1	0.2	-0.2	1.4	-0.1
1988													
Jan./Dec87	0.2	-0.1	0.4	0.2	-0.6	0.7	0.2	:	0.5	0.1	-0.9	0.8	0.0
Feb./Jan.	0.3	0.3	0.8	0.2	-0.7	0.2	0.2	0.6	0.6	0.1	0.2	1.4	0.4
March/Feb.	0.4	0.0	0.4	0.1	3.1	0.7	0.3	:	0.4	0.2	0.4	0.7	0.4
April/March	0.5	0.5	0.4	0.2	2.1	-0.4	0.4	:	0.3	0.0	0.4	0.4	1.6
May/April	0.2	0.1	0.9	0.2	0.3	-0.1	0.2	0.5	0.4	0.0	0.1	0.4	0.4
June/May	0.3	0.2	-0.1	0.2	1.3	0.4	0.2	:	0.3	0.2	-0.1	0.5	0.4
July/June	0.3	0.3	-0.4	-0.1	-0.4	1.3	0.4	:	0.2	0.4	0.2	0.8	0.1
August/July	0.5	0.2	0.7	0.0	0.1	1.0	0.3	0.8	0.5	0.1	0.3	1.4	1.1
Sept./August	0.5P	0.1	0.6	0.1	3.1P	1.0P	0.2	:	0.5P	0.1	0.3	1.1	0.6
Rates of increase over 12 months													
(T/T-12)													
1987/86													
September	2.8	1.7	3.8	0.5	14.6	4.4	3.2	:	5.2	0.3	0.5	9.2	4.3
October	2.9	1.7	4.0	0.9	15.3	4.6	3.2	:	5.2	0.2	0.3	9.6	4.6
November	2.8	1.5	4.1	1.0	15.3	4.6	3.2	3.0	5.2	0.4	0.1	9.1	4.3
December	2.6	1.4	4.2	1.0	15.7	4.5	3.1	:	4.9	0.6	0.1	8.7	3.8
1988/87													
January	2.4	0.9	4.4	0.8	13.8	4.6	2.3	:	5.0	0.6	0.7	8.3	3.4
February	2.4	1.0	5.3	0.9	12.7	4.4	2.4	1.9	4.9	0.5	0.6	8.8	3.4
March	2.6	1.0	4.8	1.0	12.7	4.5	2.5	:	5.1	0.7	0.8	8.2	3.6
April	2.7	1.0	4.7	1.1	12.5	3.9	2.4	:	5.0	1.0	0.8	8.0	3.9
May	2.7	1.0	4.6	1.1	12.1	3.9	2.4	1.8	4.8	1.1	0.8	8.3	4.1
June	3.0	1.1	4.6	1.2	11.3	4.3	2.5	:	4.8	1.5	0.9	9.1	4.6
July	3.1	1.0	4.2	1.1	12.6	4.6	2.5	:	4.9	1.9	1.2	9.7	4.8
August	3.6	0.9	4.5	1.2	13.3	5.7	2.6	2.1	5.0	1.7	1.2	10.0	5.7
September	3.8P	1.2	4.5	1.4	14.2P	5.7P	2.8	:	4.7P	1.7	1.1	11.0	5.9

TABLE IV

CONSUMER PRICES

TOBACCO PRODUCTS

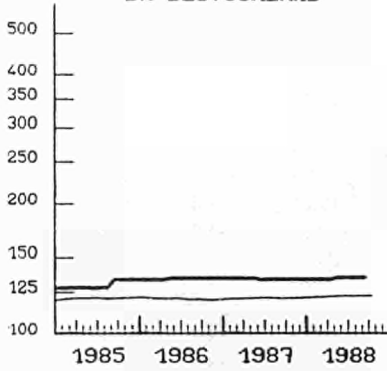
	EUR 12	B	DK	D	GR	E	F	IRL	I	L	NL	P	UK		
	Tobacco products							1980=100							
1982	0	135.4	117.7	106.2	118.9	138.7	151.0	137.5	165.9	160.6	130.6	111.3	148.3	142.5	
1983	0	150.2	132.4	126.2	129.6	168.9	169.3	150.2	195.1	188.7	143.2	117.6	179.8	152.0	
1984	0	161.4	143.0	133.9	127.5	208.3	180.4	159.5	218.0	204.1	156.8	133.9	232.7	168.6	
1985	0	169.6	154.6	140.7	129.5	235.6	193.8	157.6	247.0	222.0	166.1	140.4	287.1	176.5	
1986	0	184.2	167.0	151.0	133.7	279.4	217.1	167.8	271.8	235.1	178.2	141.4	340.1	201.6	
1987	0	193.7	175.1	154.2	133.5	324.3	233.8	176.4	287.5	259.0	182.7	145.3	383.6	208.0	
1987															
September		193.2	176.2	154.0	133.2	330.3	233.9	179.5	:	253.5	182.3	145.3	380.4	207.2	
October		197.3	176.4	154.0	133.2	330.3	233.9	179.5	:	275.5	182.3	145.3	420.2	208.8	
November		197.6	176.4	155.0	133.2	330.3	233.9	179.5	289.6	275.5	182.3	145.3	420.2	210.1	
December		197.7	176.5	155.0	133.2	330.3	233.9	179.5	:	275.5	186.1	145.3	420.2	210.3	
1988															
January		199.9	176.5	158.0	133.2	406.2	233.9	179.5	:	275.5	186.1	145.3	420.2	210.7	
February		201.4	176.5	158.0	133.2	450.8	241.2	179.5	296.0	275.5	186.1	145.3	420.2	210.9	
March		201.5	176.6	158.0	133.2	450.8	241.3	179.5	:	275.5	186.1	145.3	420.2	211.1	
April		203.3	176.6	158.0	133.2	450.8	241.3	186.7	:	275.5	186.1	145.3	420.2	214.4	
May		205.1	176.6	158.0	134.4	450.8	241.2	196.1	296.1	275.5	192.8	145.3	420.2	215.4	
June		205.1	176.6	158.0	134.4	450.8	241.3	196.1	:	275.5	192.8	145.3	420.2	215.2	
July		205.9	176.6	158.0	134.4	468.8	241.3	199.6	:	275.5	192.8	145.3	420.2	214.9	
August		206.7	176.6	158.0	134.4	494.5	241.3	199.6	296.2	275.5	192.8	145.3	420.2	215.2	
September		206.8P	176.7	158.0	134.4	494.5P	241.5P	199.6	:	275.5P	192.8	145.3	420.2	215.6	
1987															
		Rates of increase over one month (IRL 3 months)							(T/T-1)						
Sept./August		0.1	0.0	0.0	0.0	0.0	0.0	0.1	:	0.0	0.0	0.0	0.0	0.2	
Oct./Sept.		2.1	0.1	0.0	0.0	0.0	0.0	0.0	:	8.7	0.0	0.0	10.5	0.8	
Nov./Oct.		0.2	0.0	0.6	0.0	0.0	0.0	0.0	0.7	0.0	0.0	0.0	0.0	0.6	
Dec./Nov.		0.0	0.0	0.0	0.0	0.0	0.0	0.0	:	0.0	2.1	0.0	0.0	0.1	
1988															
Jan./Dec87		1.1	0.0	1.9	0.0	23.0	0.0	0.0	:	0.0	0.0	0.0	0.0	0.2	
Feb./Jan.		0.8	0.0	0.0	0.0	11.0	3.1	0.0	2.2	0.0	0.0	0.0	0.0	0.1	
March/Feb.		0.0	0.0	0.0	0.0	0.0	0.0	0.0	:	0.0	0.0	0.0	0.0	0.1	
April/March		0.9	0.0	0.0	0.0	0.0	0.0	4.0	:	0.0	0.0	0.0	0.0	1.6	
May/April		0.9	0.0	0.0	0.9	0.0	0.0	5.0	0.0	0.0	3.6	0.0	0.0	0.5	
June/May		0.0	0.0	0.0	0.0	0.0	0.0	0.0	:	0.0	0.0	0.0	0.0	-0.1	
July/June		0.4	0.0	0.0	0.0	4.0	0.0	1.8	:	0.0	0.0	0.0	0.0	-0.1	
August/July		0.3	0.0	0.0	0.0	5.5	0.0	0.0	0.0	0.0	0.0	0.0	0.0	0.1	
Sept./August		0.1P	0.0	0.0	0.0	0.0P	0.1P	0.0	:	0.0P	0.0	0.0	0.0	0.2	
1987/86															
		Rates of increase over 12 months							(T/T-12)						
September		3.6	4.4	0.0	-0.6	17.3	5.9	4.2	:	7.8	-0.1	2.8	11.6	0.5	
October		5.7	4.3	0.0	-0.6	17.3	5.9	4.2	:	17.2	-0.1	2.8	23.3	1.0	
November		5.8	4.3	0.6	-0.6	17.3	5.9	4.2	5.7	17.2	-0.1	2.8	23.2	1.2	
December		5.7	4.3	0.6	-0.6	17.3	5.9	4.2	:	17.2	2.0	1.4	23.2	1.2	
1988/87															
January		4.9	4.1	2.6	-0.6	44.3	0.1	4.2	:	8.7	2.0	0.0	22.8	1.4	
February		5.3	2.8	2.6	-0.6	46.9	3.3	4.2	3.4	8.7	2.0	0.0	22.8	1.6	
March		4.7	1.3	2.6	-0.6	36.5	3.2	4.1	:	8.7	2.0	0.0	11.1	1.7	
April		5.4	0.7	2.6	-0.5	36.5	3.2	6.3	:	8.7	2.0	0.0	11.1	3.4	
May		6.3	0.3	2.6	0.3	36.5	3.2	11.7	3.3	8.7	5.7	0.0	10.5	3.9	
June		6.4	0.3	2.6	0.9	36.5	3.2	11.7	:	8.7	5.7	0.0	10.5	3.8	
July		6.9	0.3	2.6	0.9	41.9	3.2	13.7	:	8.7	5.8	0.0	10.5	3.7	
August		7.0	0.3	2.6	0.9	49.7	3.2	11.3	3.0	8.7	5.8	0.0	10.5	4.1	
September		7.0P	0.3	2.6	0.9	49.7P	3.2P	11.2	:	8.7P	5.8	0.0	10.5	4.1	

VERBRAUCHERPREISE
TABAK

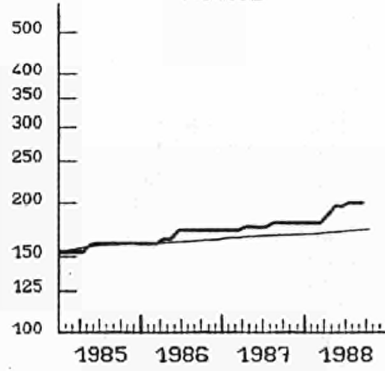
CONSUMER PRICES
TABACCO
1980 = 100

PRIX A LA CONSOMMATION
TABAC

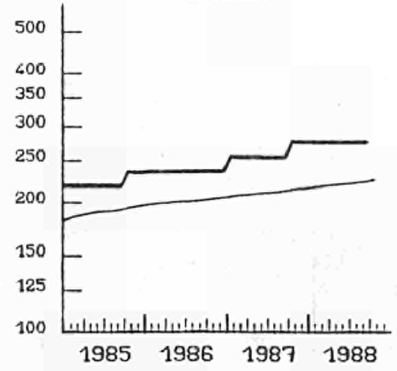
BR DEUTSCHLAND



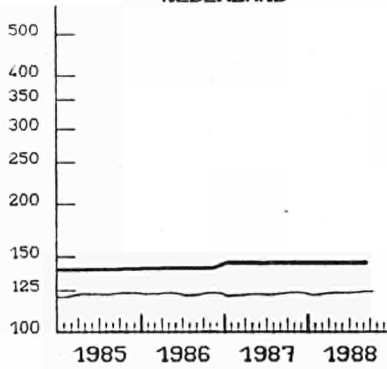
FRANCE



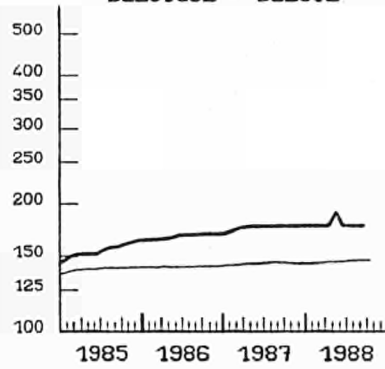
ITALIA



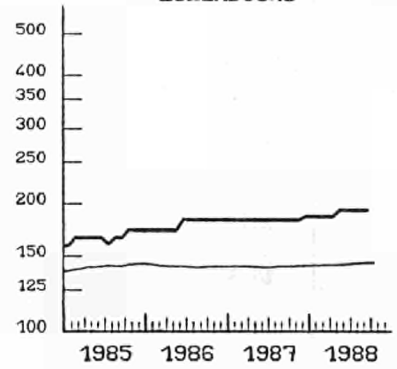
NEDERLAND



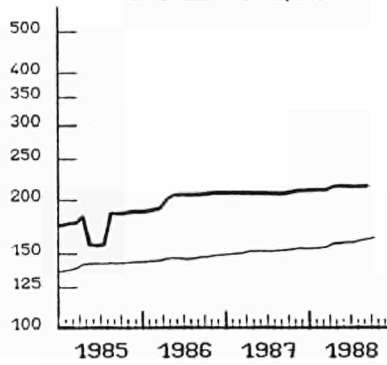
BELGIQUE - BELGIE



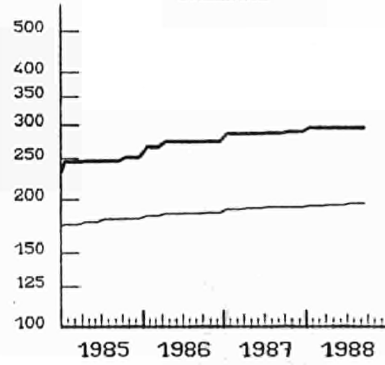
LUXEMBOURG



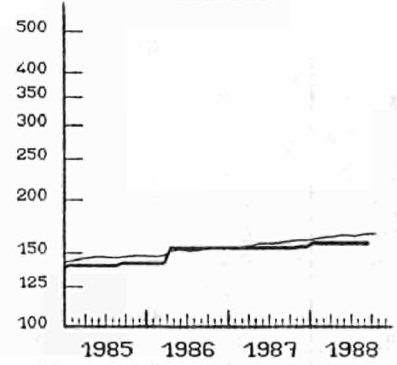
UNITED KINGDOM



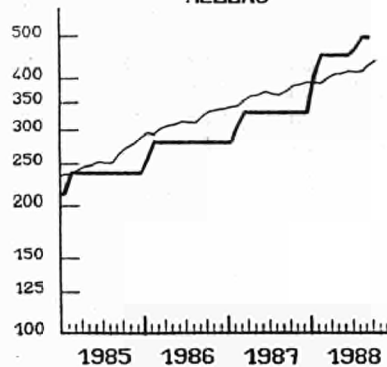
IRELAND



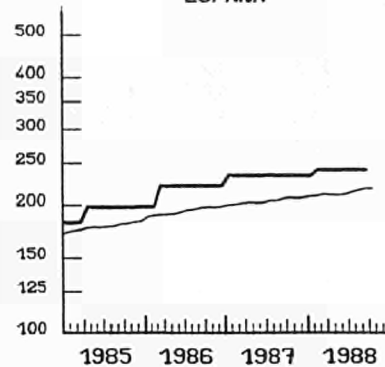
DANMARK



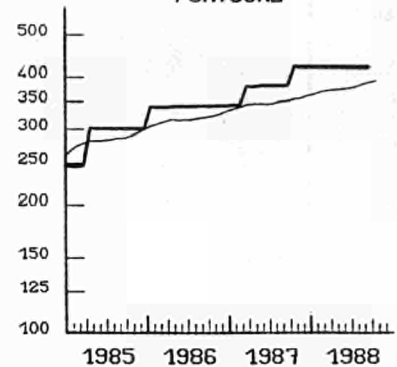
HELLAS



ESPANA



PORTUGAL



— TOBACCO
EINFACH-LOGARITHMISCHE SKALA

SEMI-LOGARITHMIC SCALE

— GENERAL
ECHELLE SEMI-LOGARITHMIQUE

Venta y suscripciones · Salg og abonnement · Verkauf und Abonnement · Πωλήσεις και συνδρομή
 Sales and subscriptions · Vente et abonnements · Vendita e abbonamenti
 Verkoop en abonnementen · Venda e assinaturas

BELGIQUE / BELGIË

Moniteur belge / Belgisch Staatsblad
 Rue de Louvain 40-42 / Leuvensestraat 40-42
 1000 Bruxelles / 1000 Brussel
 Tél. 512 00 26
 CCP / Postrekening 000-2005502-27

Sous-dépôts / Agentschappen:

**Librairie européenne /
 Europese Boekhandel**
 Rue de la Loi 244 / Wetstraat 244
 1040 Bruxelles / 1040 Brussel

CREDOC
 Rue de la Montagne 34 / Bergstraat 34
 Bte 11 / Bus 11
 1000 Bruxelles / 1000 Brussel

DANMARK

Schultz EF-publikationer
 Møntergade 19
 1116 København K
 Tlf: (01) 14 11 95
 Telecopier: (01) 32 75 11

BR DEUTSCHLAND

Bundesanzeiger Verlag
 Breite Straße
 Postfach 10 80 06
 5000 Köln 1
 Tel. (02 21) 20 29-0
 Fernschreiber: ANZEIGER BONN 8 882 595
 Telecopierer: 20 29 278

GREECE

G.C. Eleftheroudakis SA
 International Bookstore
 4 Nikis Street
 105 63 Athens
 Tel. 322 22 55
 Telex 219410 ELEF

Sub-agent for Northern Greece:

Molho's Bookstore
 The Business Bookshop
 10 Tsimiski Street
 Thessaloniki
 Tel. 275 271
 Telex 412885 LIMO

ESPAÑA

Boletín Oficial del Estado
 Trafalgar 27
 28010 Madrid
 Tel. (91) 446 60 00

Mundi-Prensa Libros, S.A.
 Castelló 37
 28001 Madrid
 Tel. (91) 431 33 99 (Libros)
 431 32 22 (Suscripciones)
 435 36 37 (Dirección)
 Télex 49370-MPLI-E

FRANCE

Journal officiel
**Service des publications
 des Communautés européennes**
 26, rue Desaix
 75727 Paris Cedex 15
 Tél. (1) 45 78 61 39

IRELAND

Government Publications Sales Office
 Sun Alliance House
 Molesworth Street
 Dublin 2
 Tel. 71 03 09

or by post

Government Stationery Office
EEC Section
 6th floor
 Bishop Street
 Dublin 8
 Tel. 78 16 66

ITALIA

Licosa Spa
 Via Lamarmora, 45
 Casella postale 552
 50 121 Firenze
 Tel. 57 97 51
 Telex 570466 LICOSA I
 CCP 343 509

Subagenti:

Libreria scientifica Lucio de Biasio -AEIOU
 Via Meravigli, 16
 20 123 Milano
 Tel. 80 76 79

Herder Editrice e Libreria
 Piazza Montecitorio, 117-120
 00 186 Roma
 Tel. 67 94 628/67 95 304

Libreria giuridica
 Via 12 Ottobre, 172/R
 16 121 Genova
 Tel. 59 56 93

GRAND-DUCHÉ DE LUXEMBOURG
 et autres pays / and other countries

Office des publications officielles
 des Communautés européennes

2, rue Mercier
 L-2985 Luxembourg
 Tél. 49 92 81
 Télex PUBOF LU 1324 b
 CCP 19190-81
 CC bancaire BIL 8-109/6003/200
 Sogenal 61-490226-96-26

Abonnements / Subscriptions

Messageries Paul Kraus
 11, rue Christophe Plantin
 L-2339 Luxembourg
 Tél. 49 98 881
 Télex 2515
 CCP 49242-63

NEDERLAND

Staatsdrukkerij- en uitgeverijbedrijf
 Christoffel Plantijnstraat
 Postbus 20014
 2500 EA 's-Gravenhage
 Tel. (070) 78 98 80 (bestellingen)

PORTUGAL

**Imprensa Nacional
 Casa da Moeda, E. P.**
 Rua D. Francisco Manuel de Melo, 5
 1092 Lisboa Codex
 Tel. 69 34 14
 Telex 15328 INCM

**Distribuidora Livros Bertrand Lda.
 Grupo Bertrand, SARRL**
 Rua das Terras dos Vales, 4-A
 Apart. 37
 2700 Amadora CODEX
 Tel. 493 90 50 - 494 87 88
 Telex 15798 BERDIS

UNITED KINGDOM

HMSO Books (PC 16)
 HMSO Publications Centre
 51 Nine Elms Lane
 London SW8 5DR
 Tel. (01) 211 77 02

Sub-agent:

Alan Armstrong & Associates Ltd
 Arkwright Road
 Reading, Berks RG2 0SQ
 Tel. (0734) 75 17 69
 Telex 849937 AAALTD G

TÜRKIYE

Dünya süper veb ofset A.Ş.
 Narlibahçe Sokak No. 15
 Cağaloğlu
 İstanbul
 Tel: 512 01 90
 Telex: 23822 dsvo-tr.

UNITED STATES OF AMERICA

European Community Information
 Service

2100 M Street, NW
 Suite 707
 Washington, DC 20037
 Tel. (202) 862 9500

CANADA

Renouf Publishing Co., Ltd
 61 Sparks Street
 Ottawa
 Ontario K1P 5R1
 Tel. Toll Free 1 (800) 267 4164
 Ottawa Region (613) 238 8985-6
 Telex 053-4936

JAPAN

Kinokuniya Company Ltd
 17-7 Shinjuku 3-Chome
 Shiniuku-ku
 Tokyo 160-91
 Tel. (03) 354 0131

Journal Department
 PO Box 55 Chitose
 Tokyo 156
 Tel. (03) 439 0124

Price (excluding VAT) in Luxembourg

	ECU	BFR	IRL	UKL	USD
Single copy	4.40	190	3.50	3.20	5.50
Subscription	46.50	2 000	36	33	55.50



OFICINA DE PUBLICACIONES OFICIALES DE LAS COMUNIDADES EUROPEAS
 KONTORET FOR DE EUROPÆISKE FÆLLESSKABERS OFFICIELLE PUBLIKATIONER
 AMT FÜR AMTLICHE VERÖFFENTLICHUNGEN DER EUROPÄISCHEN GEMEINSCHAFTEN
 ΥΠΗΡΕΣΙΑ ΕΠΙΣΗΜΩΝ ΕΚΔΟΣΕΩΝ ΤΩΝ ΕΥΡΩΠΑΙΚΩΝ ΚΟΙΝΟΤΗΤΩΝ
 OFFICE FOR OFFICIAL PUBLICATIONS OF THE EUROPEAN COMMUNITIES
 OFFICE DES PUBLICATIONS OFFICIELLES DES COMMUNAUTÉS EUROPÉENNES
 UFFICIO DELLE PUBBLICAZIONI UFFICIALI DELLE COMUNITÀ EUROPEE
 BUREAU VOOR OFFICIËLE PUBLIKATIES DER EUROPESE GEMEENSCHAPPEN
 SERVIÇO DAS PUBLICAÇÕES OFICIAIS DAS COMUNIDADES EUROPEIAS

ISSN 1010-2779