

Consumer price index

1 □ 1989 Monthly

PRICES: In 1988 the inflation rate for the EC was the same as that for the USA (+4.4%).

Between November and December 1988 the CPI for the Community as a whole rose another 0.3%. Important rises were recorded in Spain (0.8%), Greece (1.1%) and Portugal (1.2%), whereas increases in all the other EC countries were moderate or weak: Belgium 0.4%, Italy and the United Kingdom 0.3%, Germany and France 0.2%. Prices remained unchanged in Denmark and Luxemburg (0.0%), whereas there was a slight decrease in the Netherlands (-0.1%).

The inflation rate for the EC as a whole in 1988 is 4.4% (December 1988 compared with December 1987); last year this rate was only 2.6%.

The table below shows the increase of the inflation rates in most of the member states. Only Ireland and Greece have attained lower rates than last year, whereas the rate for France is equal to that of 1987.

| | December | | | December | |
|-------------|----------|-------|-------------|----------|-------|
| | 88/87 | 87/86 | | 88/87 | 87/86 |
| Netherlands | 1.2 | -0.2 | Denmark | 4.5 | 4.1 |
| Germany | 1.6 | 1.0 | Italy | 5.4 | 5.2 |
| Belgium | 1.9 | 1.4 | Spain | 5.9 | 4.6 |
| Luxemburg | 1.9 | 0.7 | Utd-Kingdom | 6.8 | 3.7 |
| Ireland | 2.7 | 3.1 | Portugal | 11.7 | 8.9 |
| France | 3.1 | 3.1 | Greece | 14.0 | 15.7 |

The inflation rate for the USA over 12 months was equal to that of the EC (4.4%); the corresponding rates were below this level for Japan (0.9%), Austria (1.9%), Switzerland (2.0%) and Canada (4.0%), whilst they were above this level in the Scandinavian countries: Norway (5.6%), Sweden (6.0%) and Finland (6.6%).

N.B.: Starting with this issue the consumer price index will be published with base 1985=100.

GENERAL INDEX EXCLUDING TOBACCO

In the framework of the Commission's program "Europe against cancer" Eurostat regularly calculates and publishes an index excluding tobacco products. The aim of this index is to make clear to the public and the social partners the effects of adjustments in taxation on tobacco products which are foreseen in the program "Europe against cancer". See pages 8, 9 and 10 in this bulletin.



OFICINA ESTADÍSTICA DE LAS COMUNIDADES EUROPEAS
DE EUROPÆISKE FÆLLESSKABERS STATISTISKE KONTOR
STATISTISCHES AMT DER EUROPÄISCHEN GEMEINSCHAFTEN
ΣΤΑΤΙΣΤΙΚΗ ΥΠΗΡΕΣΙΑ ΤΩΝ ΕΥΡΩΠΑΪΚΩΝ ΚΟΙΝΟΤΗΤΩΝ
STATISTICAL OFFICE OF THE EUROPEAN COMMUNITIES
OFFICE STATISTIQUE DES COMMUNAUTÉS EUROPÉENNES
ISTITUTO STATISTICO DELLE COMUNITÀ EUROPEE
BUREAU VOOR DE STATISTIEK DER EUROPESE GEMEENSCHAPPEN
SERVIÇO DE ESTATÍSTICA DAS COMUNIDADES EUROPEIAS

L-2920 Luxembourg – Tél. 43011 – Télex : Comeur Lu 3423
B-1049 Bruxelles, bâtiment Berlaymont, rue de la Loi 200 (bureau de liaison) – Tél. 235 1111

The information included in this bulletin has been taken from the Cronos data bank, which is accessible via the different host companies. For all information about these host companies contact Eurostat in Luxembourg, tel. 4301-4567.

To obtain specifications of the principal characteristics of the series contained in this bulletin contact Luxembourg:

Mr Nijenhuis, tel. 4301-3202

Mr Desantis, tel. 4301-3511

VERBRAUCHERPREISE
GESAMTINDEX

CONSUMER PRICES
GENERAL INDEX

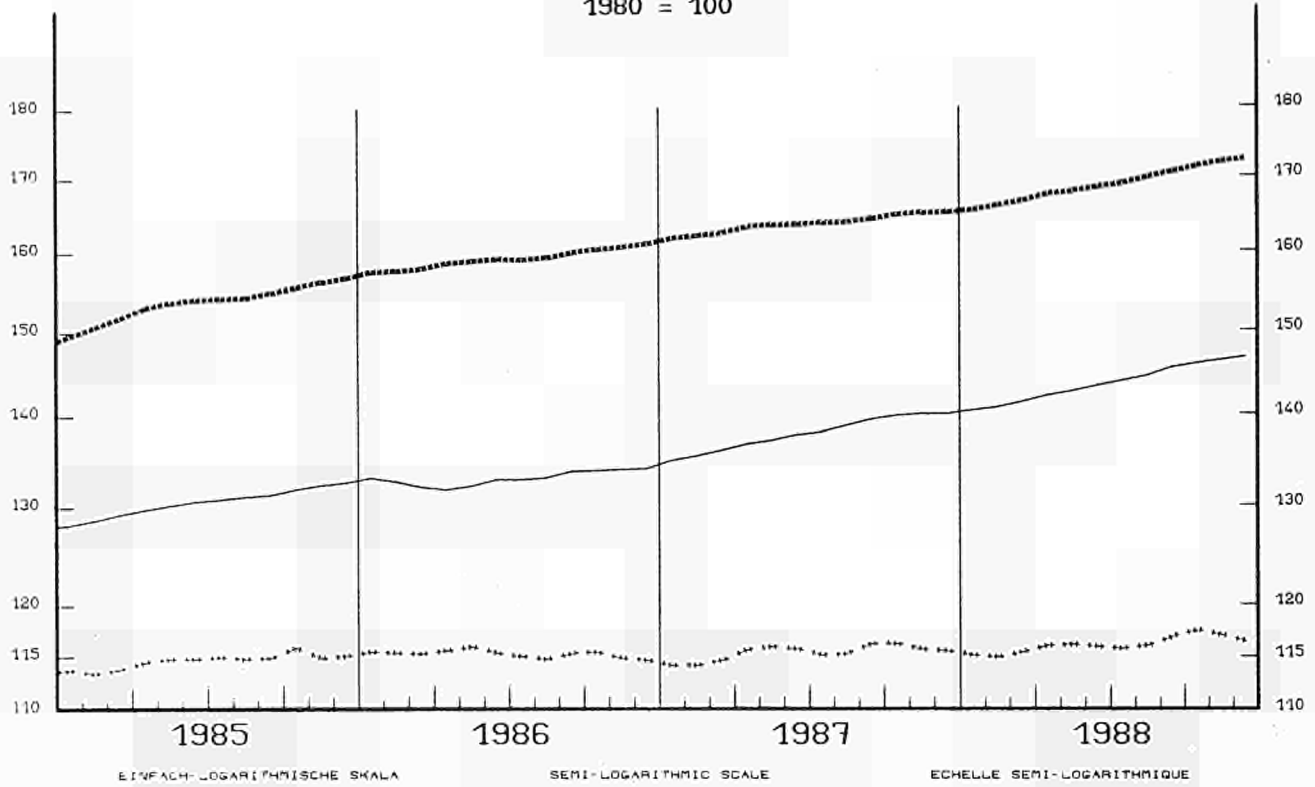
PRIX A LA CONSOMMATION
INDICE GENERAL

— USA

..... EUR 12

..... JAPAN

1980 = 100



VERÄNDERUNG × T/T-12

VARIATION × T/T-12

VARIATION × T/T-12

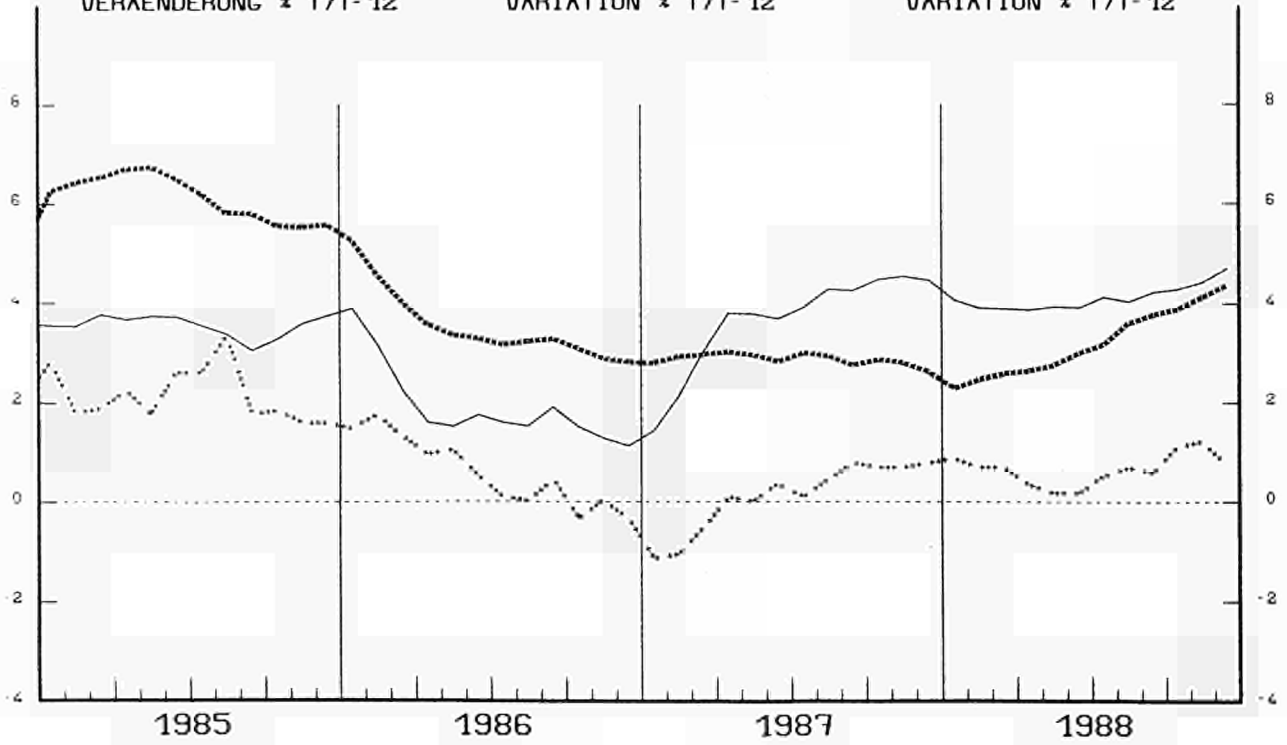


TABLE I

CONSUMER PRICES

GENERAL INDEX

| | EUR 12 | B | DK | D | GR | E | F | IRL | I | L | NL | P | UK | |
|----------------|---|-------|-------|-------|-------|-------|--------|----------|--------|-------|-------|-------|-------|--|
| | Price indices | | | | | | | 1985=100 | | | | | | |
| Annual average | | | | | | | | | | | | | | |
| 1985 | 100.0 | 100.0 | 100.0 | 100.0 | 100.0 | 100.0 | 100.0 | 100.0 | 100.0 | 100.0 | 100.0 | 100.0 | 100.0 | |
| 1986 | 103.6 | 101.3 | 103.6 | 99.7 | 123.0 | 108.8 | 102.7 | 103.8 | 105.8 | 100.3 | 100.2 | 111.8 | 103.4 | |
| 1987 | 106.5 | 102.9 | 107.8 | 100.0 | 143.2 | 114.5 | 105.9 | 107.1 | 110.9 | 100.2 | 99.8 | 122.2 | 107.7 | |
| 1988 | 110.0 | 104.1 | 112.7 | 101.2 | 162.5 | 120.0 | 108.7 | 109.4 | 116.5 | 101.7 | 100.6 | 133.9 | 113.0 | |
| 1987 | | | | | | | | | | | | | | |
| December | 107.5 | 103.0 | 109.7 | 100.2 | 152.8 | 116.6 | 106.8 | : | 113.4 | 100.7 | 100.1 | 126.8 | 109.2 | |
| 1988 | | | | | | | | | | | | | | |
| January | 107.8 | 102.9 | 110.2 | 100.4 | 152.5 | 117.4 | 107.0 | : | 114.0 | 100.9 | 99.5 | 127.8 | 109.2 | |
| February | 108.1 | 103.2 | 111.1 | 100.7 | 151.8 | 117.7 | 107.2 | 108.4 | 114.5 | 100.9 | 99.7 | 129.6 | 109.6 | |
| March | 108.5 | 103.3 | 111.5 | 100.7 | 156.4 | 118.5 | 107.5 | : | 115.0 | 101.1 | 100.2 | 130.5 | 110.0 | |
| April | 109.1 | 103.7 | 111.9 | 101.0 | 159.6 | 118.1 | 108.0 | : | 115.3 | 101.1 | 100.5 | 131.0 | 111.8 | |
| May | 109.4 | 103.8 | 112.8 | 101.2 | 160.0 | 118.0 | 108.3 | 108.9 | 115.7 | 101.2 | 100.6 | 131.4 | 112.3 | |
| June | 109.7 | 104.0 | 112.8 | 101.3 | 162.1 | 118.5 | 108.6 | : | 116.1 | 101.4 | 100.5 | 132.1 | 112.7 | |
| July | 110.0 | 104.3 | 112.3 | 101.2 | 161.7 | 120.0 | 109.0 | : | 116.3 | 101.8 | 100.6 | 133.2 | 112.8 | |
| August | 110.5 | 104.5 | 113.0 | 101.3 | 162.1 | 121.2 | 109.3 | 109.8 | 116.8 | 102.0 | 100.9 | 135.1 | 114.1 | |
| September | 111.0 | 104.7 | 113.7 | 101.3 | 166.9 | 122.4 | 109.6 | : | 117.4 | 102.1 | 101.2 | 136.6 | 114.6 | |
| October | 111.5 | 104.7 | 113.9 | 101.4 | 171.0 | 122.5 | 109.8 | : | 118.3 | 102.3 | 101.3 | 137.8 | 115.7 | |
| November | 111.9 | 104.6 | 114.7 | 101.7 | 172.2 | 122.5 | 109.9 | 110.5 | 119.2 | 102.6 | 101.4 | 139.9 | 116.3 | |
| December | 112.3P | 105.0 | 114.7 | 101.9 | 174.1 | 123.5 | 110.1P | : | 119.5P | 102.6 | 101.3 | 141.5 | 116.6 | |
| | Rates of increase over one month (IRL 3 months) | | | | | | | (T/T-1) | | | | | | |
| 1987 | | | | | | | | | | | | | | |
| Dec./Nov. | 0.1 | 0.0 | 0.1 | 0.2 | 1.2 | 0.4 | 0.1 | : | 0.2 | 0.2 | -0.2 | 1.4 | -0.1 | |
| 1988 | | | | | | | | | | | | | | |
| Jan/Dec87 | 0.2 | -0.1 | 0.4 | 0.2 | -0.2 | 0.6 | 0.2 | : | 0.5 | 0.1 | -0.6 | 0.8 | 0.0 | |
| Feb./Jan. | 0.3 | 0.3 | 0.8 | 0.2 | -0.5 | 0.3 | 0.2 | 0.7 | 0.4 | 0.1 | 0.2 | 1.4 | 0.4 | |
| March/Feb. | 0.4 | 0.0 | 0.4 | 0.1 | 3.0 | 0.7 | 0.3 | : | 0.4 | 0.2 | 0.5 | 0.7 | 0.4 | |
| April/March | 0.5 | 0.4 | 0.4 | 0.2 | 2.0 | -0.4 | 0.5 | : | 0.3 | 0.0 | 0.3 | 0.3 | 1.6 | |
| May/April | 0.2 | 0.1 | 0.9 | 0.2 | 0.3 | -0.1 | 0.2 | 0.5 | 0.3 | 0.1 | 0.1 | 0.3 | 0.4 | |
| June/May | 0.3 | 0.2 | -0.1 | 0.2 | 1.3 | 0.4 | 0.3 | : | 0.3 | 0.2 | -0.1 | 0.5 | 0.4 | |
| July/June | 0.3 | 0.3 | -0.4 | -0.1 | -0.3 | 1.3 | 0.3 | : | 0.2 | 0.4 | 0.1 | 0.8 | 0.1 | |
| August/July | 0.5 | 0.2 | 0.7 | 0.1 | 0.3 | 1.0 | 0.3 | 0.8 | 0.4 | 0.1 | 0.3 | 1.4 | 1.1 | |
| Sept./August | 0.4 | 0.1 | 0.5 | 0.0 | 3.0 | 1.0 | 0.2 | : | 0.5 | 0.1 | 0.3 | 1.1 | 0.5 | |
| Oct./Sept. | 0.5 | 0.0 | 0.2 | 0.1 | 2.5 | 0.1 | 0.2 | : | 0.8 | 0.2 | 0.1 | 0.9 | 1.0 | |
| Nov./Oct. | 0.3 | -0.1 | 0.7 | 0.2 | 0.7 | -0.1 | 0.1 | 0.6 | 0.8 | 0.3 | 0.1 | 1.5 | 0.5 | |
| Dec./Nov. | 0.3P | 0.4 | 0.0 | 0.2 | 1.1 | 0.8 | 0.2P | : | 0.3P | 0.0 | -0.1 | 1.2 | 0.3 | |
| | Rates of increase over 12 months | | | | | | | (T/T-12) | | | | | | |
| 1987/86 | | | | | | | | | | | | | | |
| December | 2.6 | 1.4 | 4.1 | 1.0 | 15.7 | 4.6 | 3.1 | : | 5.2 | 0.7 | -0.2 | 8.9 | 3.7 | |
| 1988/87 | | | | | | | | | | | | | | |
| January | 2.3 | 0.9 | 4.3 | 0.7 | 14.3 | 4.5 | 2.4 | : | 5.2 | 0.6 | 0.4 | 8.5 | 3.3 | |
| February | 2.4 | 1.0 | 5.2 | 0.9 | 13.4 | 4.4 | 2.4 | 2.0 | 5.0 | 0.6 | 0.4 | 8.9 | 3.3 | |
| March | 2.6 | 1.0 | 4.7 | 1.0 | 13.2 | 4.5 | 2.5 | : | 5.2 | 0.8 | 0.7 | 8.2 | 3.5 | |
| April | 2.7 | 1.0 | 4.7 | 1.0 | 13.0 | 3.9 | 2.5 | : | 5.1 | 1.0 | 0.8 | 8.0 | 3.9 | |
| May | 2.8 | 1.0 | 4.6 | 1.1 | 12.5 | 3.9 | 2.5 | 1.9 | 5.0 | 1.2 | 0.9 | 8.3 | 4.2 | |
| June | 3.0 | 1.1 | 4.6 | 1.1 | 11.8 | 4.3 | 2.6 | : | 5.0 | 1.5 | 0.9 | 9.2 | 4.6 | |
| July | 3.2 | 1.0 | 4.1 | 1.0 | 13.2 | 4.6 | 2.7 | : | 5.0 | 2.0 | 1.0 | 9.7 | 4.8 | |
| August | 3.6 | 0.9 | 4.5 | 1.2 | 14.0 | 5.7 | 2.8 | 2.1 | 5.0 | 1.8 | 1.0 | 10.0 | 5.7 | |
| September | 3.8 | 1.2 | 4.5 | 1.4 | 14.8 | 5.7 | 3.0 | : | 4.9 | 1.8 | 1.0 | 11.0 | 5.9 | |
| October | 3.8 | 1.3 | 4.2 | 1.3 | 14.1 | 5.2 | 3.0 | : | 4.9 | 2.0 | 0.9 | 10.7 | 6.4 | |
| November | 4.1 | 1.6 | 4.6 | 1.6 | 14.1 | 5.4 | 3.0 | 2.7 | 5.3 | 2.1 | 1.1 | 11.9 | 6.4 | |
| December | 4.4P | 1.9 | 4.5 | 1.6 | 14.0 | 5.9 | 3.1P | : | 5.4P | 1.9 | 1.2 | 11.7 | 6.8 | |

TABLE II

CONSUMER PRICES

GENERAL INDEX

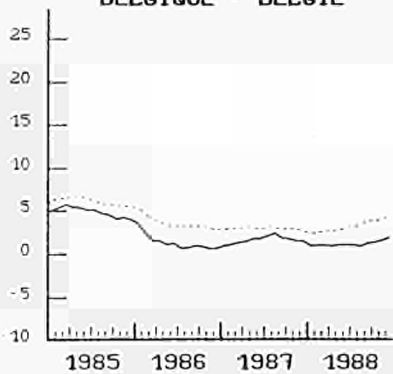
| | U.S.A | Japan | Switzerland | Austria | Norway | Sweden | Finland | Canada |
|----------------|---|--------|-------------|---------|----------|--------|---------|--------|
| | Price indices | | | | 1985=100 | | | |
| Annual average | | | | | | | | |
| 1985 | 100.0 | 100.0 | 100.0 | 100.0 | 100.0 | 100.0 | 100.0 | 100.0 |
| 1986 | 101.9 | 100.6 | 100.8 | 101.7 | 107.2 | 104.2 | 103.6 | 104.1 |
| 1987 | 105.7 | 100.7 | 102.2 | 103.1 | 116.5 | 108.6 | 107.4 | 108.7 |
| 1988 | 110.0 | 101.4 | 104.2 | 105.1 | 124.3 | 114.9 | 112.7 | 113.1 |
| 1987 | | | | | | | | |
| December | 107.3 | 100.9 | 103.0 | 103.5 | 119.4 | 111.0 | 108.4 | 110.5 |
| 1988 | | | | | | | | |
| January | 107.6 | 100.6 | 103.2 | 103.9 | 120.8 | 111.6 | 109.8 | 110.7 |
| February | 107.9 | 100.4 | 103.7 | 104.1 | 121.7 | 112.5 | 110.1 | 111.1 |
| March | 108.3 | 100.8 | 104.0 | 104.4 | 123.4 | 113.0 | 110.7 | 111.6 |
| April | 108.9 | 101.3 | 104.2 | 104.5 | 123.7 | 114.0 | 111.5 | 112.0 |
| May | 109.3 | 101.4 | 104.0 | 104.3 | 123.9 | 114.3 | 112.4 | 112.7 |
| June | 109.7 | 101.2 | 104.1 | 105.0 | 124.6 | 114.7 | 113.0 | 112.9 |
| July | 110.2 | 101.0 | 103.9 | 106.2 | 124.6 | 115.2 | 112.9 | 113.6 |
| August | 110.8 | 101.3 | 104.2 | 106.5 | 124.5 | 115.4 | 113.1 | 113.9 |
| September | 111.4 | 102.1 | 104.3 | 105.9 | 126.1 | 116.3 | 114.2 | 114.0 |
| October | 111.8 | 102.6 | 104.5 | 105.6 | 126.2 | 117.2 | 114.4 | 114.5 |
| November | 111.9 | 102.2 | 104.9 | 105.5 | 126.2 | 117.4 | 114.6 | 114.9 |
| December | 112.1 | 101.8P | 105.0 | 105.5 | 126.2 | 117.7 | 115.5 | 114.9 |
| | Rates of increase over one month (IRL 3 months) | | | | (T/T-1) | | | |
| 1987 | | | | | | | | |
| Dec./Nov. | 0.0 | -0.1 | 0.0 | 0.1 | 0.4 | 0.0 | 0.0 | 0.1 |
| 1988 | | | | | | | | |
| Jan/Dec87 | 0.3 | -0.3 | 0.2 | 0.4 | 1.2 | 0.5 | 1.2 | 0.2 |
| Feb./Jan. | 0.3 | -0.2 | 0.5 | 0.2 | 0.7 | 0.8 | 0.3 | 0.4 |
| March/Feb. | 0.4 | 0.4 | 0.2 | 0.3 | 1.4 | 0.5 | 0.5 | 0.5 |
| April/March | 0.5 | 0.5 | 0.2 | 0.1 | 0.2 | 0.9 | 0.7 | 0.4 |
| May/April | 0.3 | 0.1 | -0.2 | -0.2 | 0.2 | 0.3 | 0.8 | 0.6 |
| June/May | 0.4 | -0.2 | 0.1 | 0.6 | 0.6 | 0.3 | 0.6 | 0.1 |
| July/June | 0.4 | -0.2 | -0.2 | 1.2 | 0.0 | 0.5 | -0.1 | 0.6 |
| August/July | 0.4 | 0.3 | 0.3 | 0.3 | -0.1 | 0.2 | 0.2 | 0.3 |
| Sept./August | 0.7 | 0.8 | 0.1 | -0.6 | 1.3 | 0.7 | 1.0 | 0.1 |
| Oct./Setp. | 0.3 | 0.5 | 0.2 | -0.3 | 0.1 | 0.8 | 0.1 | 0.5 |
| Nov./Oct. | 0.1 | -0.4 | 0.4 | -0.1 | 0.0 | 0.2 | 0.2 | 0.3 |
| Dec./Nov. | 0.2 | -0.4P | 0.1 | 0.0 | 0.0 | 0.2 | 0.9 | 0.0 |
| | Rates of increase over 12 months | | | | (T/T-12) | | | |
| 1987/86 | | | | | | | | |
| December | 4.4 | 0.8 | 1.9 | 1.7 | 7.4 | 5.2 | 3.6 | 4.2 |
| 1988/87 | | | | | | | | |
| January | 4.0 | 0.9 | 1.5 | 1.9 | 7.0 | 4.4 | 3.8 | 4.1 |
| February | 3.9 | 0.7 | 1.8 | 2.2 | 6.8 | 5.2 | 3.8 | 4.1 |
| March | 3.9 | 0.7 | 1.8 | 2.3 | 7.2 | 5.5 | 3.8 | 4.1 |
| April | 3.9 | 0.3 | 1.9 | 2.2 | 7.2 | 6.1 | 4.2 | 4.0 |
| May | 3.9 | 0.2 | 2.3 | 1.7 | 7.1 | 6.4 | 4.8 | 4.1 |
| June | 4.0 | 0.2 | 2.0 | 1.4 | 7.1 | 6.9 | 5.1 | 3.9 |
| July | 4.1 | 0.5 | 1.8 | 2.1 | 6.8 | 6.1 | 5.0 | 3.8 |
| August | 4.0 | 0.7 | 1.8 | 1.8 | 6.6 | 5.8 | 4.9 | 4.0 |
| September | 4.2 | 0.6 | 2.0 | 1.9 | 6.4 | 5.5 | 5.5 | 4.1 |
| October | 4.2 | 1.1 | 1.8 | 1.8 | 6.4 | 5.9 | 5.5 | 4.2 |
| November | 4.2 | 1.2 | 1.9 | 2.0 | 6.2 | 5.7 | 5.6 | 4.1 |
| December | 4.4 | 0.9P | 2.0 | 1.9 | 5.6 | 6.0 | 6.6 | 4.0 |

VERBRAUCHERPREISE
GESAMTINDEX
VEARENDRUNG $\times T/T-12$

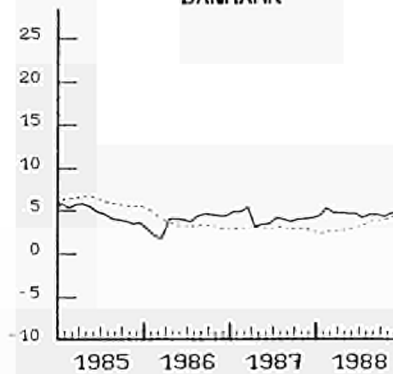
CONSUMER PRICES
GENERAL INDEX
VARIATION $\times T/T-12$

PRIX A LA CONSOMMATION
INDICE GENERAL
VARIATION $\times T/T-12$

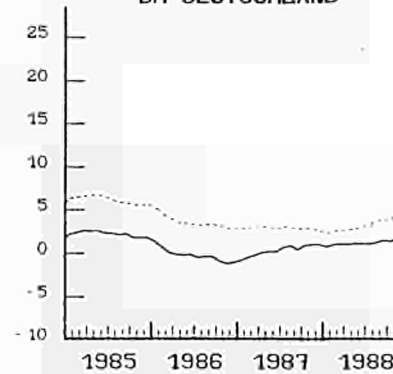
BELGIQUE - BELGIE



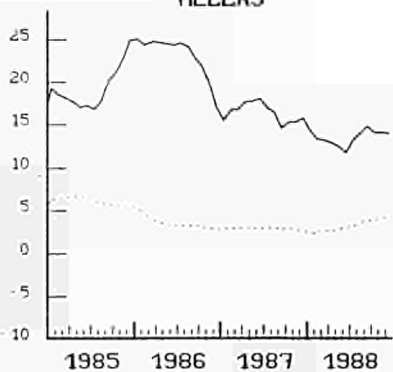
DANMARK



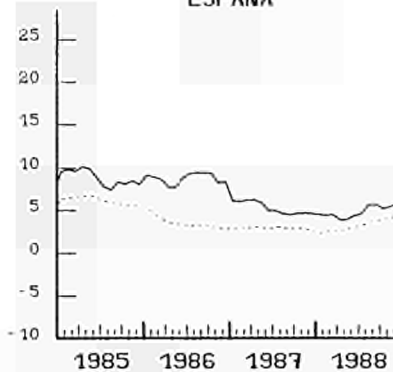
BR DEUTSCHLAND



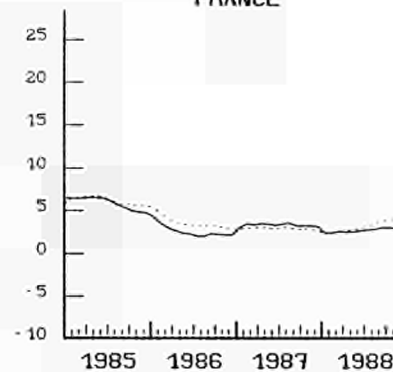
HELLAS



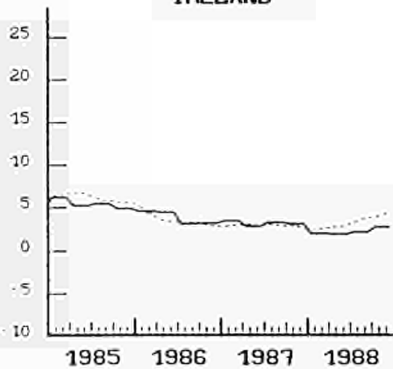
ESPAÑA



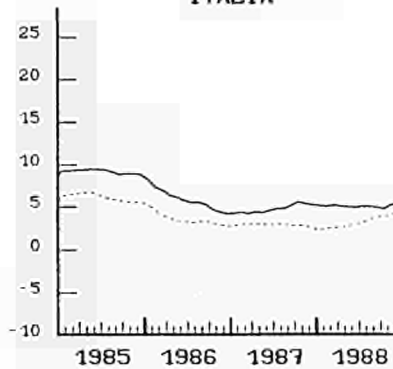
FRANCE



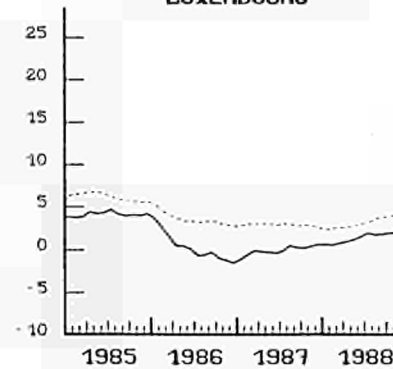
IRELAND



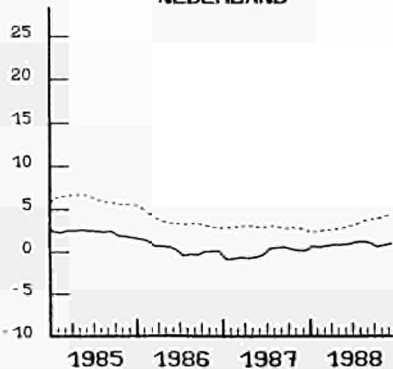
ITALIA



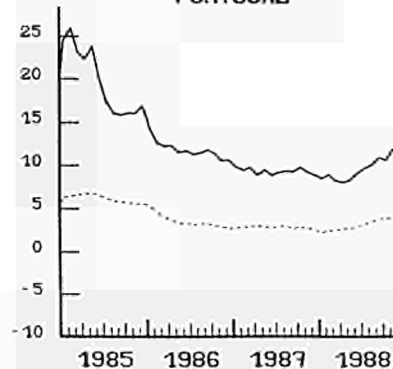
LUXEMBOURG



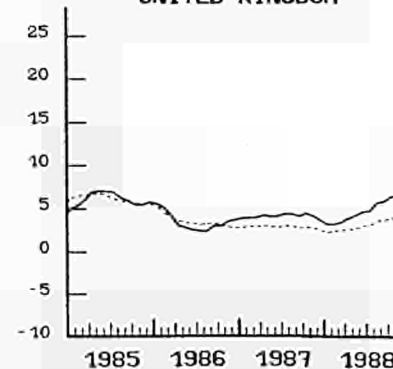
NEDERLAND



PORTUGAL



UNITED KINGDOM



..... EUR 12

EXPLANATORY NOTES

METHODOLOGY

The consumer price indices given here are the national indices which have different names in each country. As far as trends are concerned, the general index published by EUROSTAT always corresponds to the general index published by the country. The component items of this general index are groups of national indices aggregated according to a harmonized classification conforming to the ESA (European System of Integrated Economic Accounts). For these groups, the price trends correspond to the trends noted by the national indices for the same classification field. The field covered by the general index varies according to country: as regards the population concerned (specific income bracket, certain socio-professional categories or total households), the geographical areas used (capital, urban areas, country as a whole, etc.) or differences in treatments of expenditure on rent, health care, etc... Finally, there is no uniform method for seasonal adjustments. A fixed base system is used in some countries, whereas in others a chain system is used (variable weightings). The reference years used at national level for the indices vary according to country. For ease of comparison, EUROSTAT has chosen 1980 as the common year for the presentation of these indices.

THE CALCULATION OF THE EUR-12 INDEX

The Eur-12 index as calculated by EUROSTAT is a weighted average of national price indices. The weight used is the proportion of country in the final consumption of households for EUR-12. The values of this consumption in national currency are converted into purchasing power standard (PPS); for this purpose purchasing power parities of the G.D.P. are used. Up to 1987 purchasing power parities those which result from the 1980 enquiry; 1988 onwards they are those from the 1988 enquiry. The index calculated is a chain index of the "Laspeyres" type with weights changing each year. However, the weights are lagged three years since the national accounts needed become available only after three years. For example: the weights used for 1988 are those of 1985, for 1987 those of 1984. Moreover, national accounts data are revised leading to revisions of the consumer price weights. In order to avoid continuing modifications in the EUR-12 index for pre-war periods, EUROSTAT has decided to "freeze" the weights which are used. Thus the EUR-12 index will not be affected by revisions of national accounts. However when Member States carry out major revisions in the series for past years, EUR-12 data will be calculated using these new series.

TABLE III

CONSUMER PRICES

GENERAL INDEX EXCLUDING TOBACCO PRODUCTS

| | EUR 12 | B | DK | D | GR | E | F | IRL | I | L | NL | P | UK |
|---------|---|-------|-------|-------|-------|--------|-------|----------|--------|-------|-------|--------|-------|
| | General index excluding tobacco products | | | | | | | 1985=100 | | | | | |
| ual | | | | | | | | | | | | | |
| age | | | | | | | | | | | | | |
| 1985 | 100.0 | 100.0 | 100.0 | 100.0 | 100.0 | 100.0 | 100.0 | 100.0 | 100.0 | 100.0 | 100.0 | 100.0 | 100.0 |
| 1986 | 103.5 | 101.2 | 103.5 | 99.7 | 123.2 | 109.8 | 102.4 | 103.5 | 105.8 | 100.1 | 100.3 | 111.7 | 103.2 |
| 1987 | 106.5 | 102.7 | 107.8 | 100.0 | 143.4 | 115.5 | 105.7 | 106.7 | 110.7 | 100.0 | 100.1 | 122.1 | 107.5 |
| 1988 | | | | | | | | | | | | | |
| 7 | | | | | | | | | | | | | |
| ber | 107.4 | 102.8 | 109.6 | 100.0 | 151.2 | 117.2 | 106.6 | 107.2 | 112.9 | 100.3 | 100.9 | 124.9 | 109.1 |
| ber | 107.5 | 102.9 | 109.7 | 100.2 | 153.1 | 117.7 | 106.7 | : | 113.1 | 100.5 | 100.7 | 126.7 | 109.0 |
| 8 | | | | | | | | | | | | | |
| y | 107.7 | 102.8 | 110.1 | 100.4 | 152.2 | 118.4 | 106.9 | : | 113.7 | 100.6 | 99.9 | 127.8 | 109.0 |
| ry | 108.1 | 103.1 | 111.0 | 100.7 | 151.1 | 118.7 | 107.1 | 107.8 | 114.3 | 100.7 | 100.0 | 129.6 | 109.4 |
| | 108.5 | 103.1 | 111.4 | 100.7 | 155.8 | 119.6 | 107.4 | : | 114.7 | 100.9 | 100.5 | 130.5 | 109.9 |
| | 109.1 | 103.6 | 111.9 | 101.0 | 159.1 | 119.2 | 107.8 | : | 115.1 | 100.9 | 100.9 | 131.0 | 111.6 |
| | 109.3 | 103.7 | 112.9 | 101.2 | 159.5 | 119.1 | 108.0 | 108.4 | 115.5 | 100.9 | 100.9 | 131.4 | 112.0 |
| | 109.7 | 103.9 | 112.8 | 101.3 | 161.6 | 119.6 | 108.3 | : | 115.9 | 101.1 | 100.9 | 132.1 | 112.5 |
| | 109.9 | 104.2 | 112.3 | 101.2 | 161.0 | 121.1 | 108.7 | : | 116.1 | 101.5 | 100.9 | 133.2 | 112.6 |
| t | 110.5 | 104.4 | 113.1 | 101.2 | 161.2 | 122.3 | 109.0 | 109.3 | 116.6 | 101.7 | 101.3 | 135.1 | 113.9 |
| nber | 111.0 | 104.5 | 113.7 | 101.3 | 166.1 | 123.5 | 109.2 | : | 117.2 | 101.8 | 101.6 | 136.6 | 114.5 |
| er | 111.5 | 104.6 | 113.9 | 101.4 | 170.4 | 123.7 | 109.5 | : | 118.1 | 102.0 | 101.7 | 137.9 | 115.6 |
| ber | 111.9P | 104.5 | 114.8 | 101.6 | 171.6 | 123.6P | 109.6 | 110.3P | 119.0P | 102.4 | 101.8 | 140.0P | 116.2 |
| | Rates of increase over one month (IRL 3 months) | | | | | | | (T/T-1) | | | | | |
| 87 | | | | | | | | | | | | | |
| Oct. | 0.1 | -0.3 | 0.3 | 0.0 | 0.7 | -0.2 | 0.1 | 0.1 | 0.4 | 0.2 | -0.1 | 0.4 | 0.5 |
| Nov. | 0.1 | 0.0 | 0.1 | 0.2 | 1.3 | 0.4 | 0.1 | : | 0.1 | 0.2 | -0.2 | 1.4 | -0.1 |
| 88 | | | | | | | | | | | | | |
| ec87 | 0.2 | -0.1 | 0.4 | 0.2 | -0.6 | 0.7 | 0.2 | : | 0.5 | 0.1 | -0.8 | 0.8 | 0.0 |
| an. | 0.3 | 0.3 | 0.8 | 0.2 | -0.7 | 0.2 | 0.2 | 0.6 | 0.6 | 0.1 | 0.2 | 1.4 | 0.4 |
| i/Feb. | 0.4 | 0.0 | 0.4 | 0.1 | 3.1 | 0.7 | 0.3 | : | 0.4 | 0.2 | 0.5 | 0.7 | 0.4 |
| March | 0.5 | 0.5 | 0.4 | 0.2 | 2.1 | -0.4 | 0.4 | : | 0.3 | 0.0 | 0.3 | 0.4 | 1.6 |
| April | 0.2 | 0.1 | 0.9 | 0.2 | 0.3 | -0.1 | 0.2 | 0.5 | 0.4 | 0.0 | 0.1 | 0.4 | 0.4 |
| May | 0.3 | 0.2 | -0.1 | 0.2 | 1.3 | 0.4 | 0.2 | : | 0.3 | 0.2 | -0.1 | 0.5 | 0.4 |
| une | 0.2 | 0.3 | -0.4 | -0.1 | -0.4 | 1.3 | 0.4 | : | 0.2 | 0.4 | 0.1 | 0.8 | 0.1 |
| st/July | 0.5 | 0.2 | 0.7 | 0.0 | 0.1 | 1.0 | 0.3 | 0.8 | 0.5 | 0.1 | 0.3 | 1.4 | 1.1 |
| August | 0.5 | 0.1 | 0.6 | 0.1 | 3.1 | 1.0 | 0.2 | : | 0.5 | 0.1 | 0.3 | 1.1 | 0.6 |
| etp. | 0.5 | 0.0 | 0.2 | 0.1 | 2.5 | 0.1 | 0.2 | : | 0.8 | 0.2 | 0.1 | 0.9 | 1.0 |
| Oct. | 0.3P | -0.1 | 0.7 | 0.2 | 0.7 | -0.1P | 0.1 | 0.9P | 0.8P | 0.3 | 0.1 | 1.5P | 0.5 |
| | Rates of increase over 12 months | | | | | | | (T/T-12) | | | | | |
| 7/86 | | | | | | | | | | | | | |
| nber | 2.8 | 1.5 | 4.1 | 1.0 | 15.3 | 4.6 | 3.2 | 3.0 | 5.2 | 0.4 | 0.1 | 9.1 | 4.3 |
| nber | 2.6 | 1.4 | 4.2 | 1.0 | 15.7 | 4.5 | 3.1 | : | 4.9 | 0.6 | 0.1 | 8.7 | 3.8 |
| 8/87 | | | | | | | | | | | | | |
| ry | 2.4 | 0.9 | 4.4 | 0.8 | 13.8 | 4.6 | 2.3 | : | 5.0 | 0.6 | 0.8 | 8.3 | 3.4 |
| ary | 2.4 | 1.0 | 5.3 | 0.9 | 12.7 | 4.4 | 2.4 | 1.9 | 4.9 | 0.5 | 0.7 | 8.8 | 3.4 |
| n | 2.6 | 1.0 | 4.8 | 1.0 | 12.7 | 4.5 | 2.5 | : | 5.1 | 0.7 | 0.9 | 8.2 | 3.6 |
| | 2.7 | 1.0 | 4.7 | 1.1 | 12.5 | 3.9 | 2.4 | : | 5.0 | 1.0 | 0.9 | 8.0 | 3.9 |
| | 2.8 | 1.0 | 4.6 | 1.1 | 12.1 | 3.9 | 2.4 | 1.8 | 4.8 | 1.1 | 0.9 | 8.3 | 4.1 |
| | 3.0 | 1.1 | 4.6 | 1.2 | 11.3 | 4.3 | 2.5 | : | 4.8 | 1.5 | 1.0 | 9.1 | 4.6 |
| | 3.1 | 1.0 | 4.2 | 1.1 | 12.6 | 4.6 | 2.5 | : | 4.9 | 1.9 | 1.2 | 9.7 | 4.8 |
| st | 3.6 | 0.9 | 4.5 | 1.2 | 13.3 | 5.7 | 2.6 | 2.1 | 5.0 | 1.7 | 1.2 | 10.0 | 5.7 |
| nber | 3.8 | 1.2 | 4.5 | 1.4 | 14.2 | 5.7 | 2.8 | : | 4.7 | 1.7 | 1.1 | 11.0 | 5.9 |
| er | 3.9 | 1.4 | 4.2 | 1.4 | 13.4 | 5.3 | 2.8 | : | 5.0 | 1.9 | 0.7 | 10.8 | 6.5 |
| nber | 4.2P | 1.6 | 4.7 | 1.6 | 13.5 | 5.4P | 2.8 | 2.9P | 5.4P | 2.0 | 0.8 | 12.0P | 6.5 |

TABLE IV

CONSUMER PRICES

TOBACCO PRODUCTS

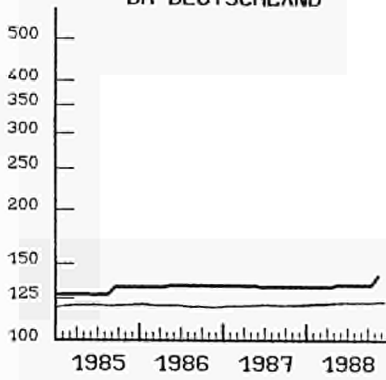
| | EUR 12 | B | DK | D | GR | E | F | IRL | I | L | NL | P | UK | |
|----------------|---|-------|-------|-------|-------|--------|-------|----------|-------|-------|-------|--------|-------|--|
| | Tobacco products | | | | | | | 1985=100 | | | | | | |
| Annual average | | | | | | | | | | | | | | |
| 1985 | 100.0 | 100.0 | 100.0 | 100.0 | 100.0 | 100.0 | 100.0 | 100.0 | 100.0 | 100.0 | 100.0 | 100.0 | 100.0 | |
| 1986 | 108.6 | 108.0 | 107.3 | 103.2 | 118.6 | 112.0 | 106.5 | 110.0 | 105.9 | 107.8 | 100.8 | 118.5 | 114.3 | |
| 1987 | 114.2 | 113.3 | 109.6 | 103.1 | 137.6 | 120.6 | 111.9 | 116.4 | 116.7 | 110.0 | 103.5 | 133.6 | 117.8 | |
| 1988 | | | | | | | | | | | | | | |
| 1987 | | | | | | | | | | | | | | |
| November | 116.6 | 114.1 | 110.2 | 102.9 | 140.2 | 120.7 | 113.9 | 117.2 | 124.1 | 109.7 | 103.5 | 146.4 | 119.0 | |
| December | 116.6 | 114.2 | 110.2 | 102.9 | 140.2 | 120.7 | 113.9 | : | 124.1 | 112.0 | 103.5 | 146.4 | 119.2 | |
| 1988 | | | | | | | | | | | | | | |
| January | 117.9 | 114.2 | 112.3 | 102.9 | 172.4 | 120.7 | 113.9 | : | 124.1 | 112.0 | 103.5 | 146.4 | 119.4 | |
| February | 118.8 | 114.2 | 112.3 | 102.9 | 191.3 | 124.4 | 113.9 | 119.8 | 124.1 | 112.0 | 103.5 | 146.4 | 119.5 | |
| March | 118.8 | 114.2 | 112.3 | 102.9 | 191.3 | 124.5 | 113.9 | : | 124.1 | 112.0 | 103.5 | 146.4 | 119.6 | |
| April | 119.9 | 114.2 | 112.3 | 102.9 | 191.3 | 124.5 | 118.5 | : | 124.1 | 112.0 | 103.5 | 146.4 | 121.5 | |
| May | 121.0 | 114.2 | 112.3 | 103.8 | 191.3 | 124.5 | 124.4 | 119.9 | 124.1 | 116.1 | 103.5 | 146.4 | 122.1 | |
| June | 120.9 | 114.3 | 112.3 | 103.8 | 191.3 | 124.5 | 124.4 | : | 124.1 | 116.1 | 103.5 | 146.4 | 121.9 | |
| July | 121.5 | 114.3 | 112.3 | 103.8 | 199.0 | 124.5 | 126.6 | : | 124.1 | 116.1 | 103.5 | 146.4 | 121.8 | |
| August | 121.9 | 114.3 | 112.3 | 103.8 | 209.9 | 124.5 | 126.6 | 119.9 | 124.1 | 116.1 | 103.5 | 146.4 | 121.9 | |
| September | 121.9 | 114.3 | 112.3 | 103.8 | 209.9 | 124.5 | 126.6 | : | 124.1 | 116.1 | 103.5 | 146.4 | 122.2 | |
| October | 122.1 | 114.3 | 112.3 | 103.8 | 209.9 | 124.5 | 126.6 | : | 124.1 | 116.1 | 103.5 | 146.4 | 122.7 | |
| November | 123.3P | 114.4 | 112.3 | 109.0 | 209.9 | 124.5P | 126.6 | 119.9 | 124.1 | 116.1 | 104.0 | 146.4P | 123.8 | |
| | Rates of increase over one month (IRL 3 months) | | | | | | | (T/T-1) | | | | | | |
| 1987 | | | | | | | | | | | | | | |
| Nov./Oct. | 0.2 | 0.0 | 0.6 | 0.0 | 0.0 | 0.0 | 0.0 | 0.7 | 0.0 | 0.0 | 0.0 | 0.0 | 0.6 | |
| Dec./Nov. | 0.0 | 0.0 | 0.0 | 0.0 | 0.0 | 0.0 | 0.0 | : | 0.0 | 2.1 | 0.0 | 0.0 | 0.1 | |
| 1988 | | | | | | | | | | | | | | |
| Jan/Dec87 | 1.1 | 0.0 | 1.9 | 0.0 | 23.0 | 0.0 | 0.0 | : | 0.0 | 0.0 | 0.0 | 0.0 | 0.2 | |
| Feb./Jan. | 0.8 | 0.0 | 0.0 | 0.0 | 11.0 | 3.1 | 0.0 | 2.2 | 0.0 | 0.0 | 0.0 | 0.0 | 0.1 | |
| March/Feb. | 0.0 | 0.0 | 0.0 | 0.0 | 0.0 | 0.0 | 0.0 | : | 0.0 | 0.0 | 0.0 | 0.0 | 0.1 | |
| April/March | 0.9 | 0.0 | 0.0 | 0.0 | 0.0 | 0.0 | 4.0 | : | 0.0 | 0.0 | 0.0 | 0.0 | 1.6 | |
| May/April | 0.9 | 0.0 | 0.0 | 0.9 | 0.0 | 0.0 | 5.0 | 0.0 | 0.0 | 3.6 | 0.0 | 0.0 | 0.5 | |
| June/May | 0.0 | 0.0 | 0.0 | 0.0 | 0.0 | 0.0 | 0.0 | : | 0.0 | 0.0 | 0.0 | 0.0 | -0.1 | |
| July/June | 0.4 | 0.0 | 0.0 | 0.0 | 4.0 | 0.0 | 1.8 | : | 0.0 | 0.0 | 0.0 | 0.0 | -0.1 | |
| August/July | 0.3 | 0.0 | 0.0 | 0.0 | 5.5 | 0.0 | 0.0 | 0.0 | 0.0 | 0.0 | 0.0 | 0.0 | 0.1 | |
| Sept./August | 0.0 | 0.0 | 0.0 | 0.0 | 0.0 | 0.0 | 0.0 | : | 0.0 | 0.0 | 0.0 | 0.0 | 0.2 | |
| Oct./Setp. | 0.1 | 0.0 | 0.0 | 0.0 | 0.0 | 0.0 | 0.0 | : | 0.0 | 0.0 | 0.0 | 0.0 | 0.4 | |
| Nov./Oct. | 1.0P | 0.1 | 0.0 | 5.0 | 0.0 | 0.0P | 0.0 | 0.0 | 0.0 | 0.0 | 0.5 | 0.0P | 0.9 | |
| | Rates of increase over 12 months | | | | | | | (T/T-12) | | | | | | |
| 1987/86 | | | | | | | | | | | | | | |
| November | 5.8 | 4.3 | 0.6 | -0.6 | 17.3 | 5.9 | 4.2 | 5.7 | 17.2 | -0.1 | 2.8 | 23.2 | 1.2 | |
| December | 5.7 | 4.3 | 0.6 | -0.6 | 17.3 | 5.9 | 4.2 | : | 17.2 | 2.0 | 1.4 | 23.2 | 1.2 | |
| 1988/87 | | | | | | | | | | | | | | |
| January | 4.9 | 4.1 | 2.6 | -0.6 | 44.3 | 0.1 | 4.2 | : | 8.7 | 2.0 | 0.0 | 22.8 | 1.4 | |
| February | 5.3 | 2.8 | 2.6 | -0.6 | 46.9 | 3.3 | 4.2 | 3.4 | 8.7 | 2.0 | 0.0 | 22.8 | 1.6 | |
| March | 4.7 | 1.3 | 2.6 | -0.6 | 36.5 | 3.2 | 4.1 | : | 8.7 | 2.0 | 0.0 | 11.1 | 1.7 | |
| April | 5.4 | 0.7 | 2.6 | -0.5 | 36.5 | 3.2 | 6.3 | : | 8.7 | 2.0 | 0.0 | 11.1 | 3.4 | |
| May | 6.3 | 0.3 | 2.6 | 0.3 | 36.5 | 3.2 | 11.7 | 3.3 | 8.7 | 5.7 | 0.0 | 10.5 | 3.9 | |
| June | 6.4 | 0.3 | 2.6 | 0.9 | 36.5 | 3.2 | 11.7 | : | 8.7 | 5.7 | 0.0 | 10.5 | 3.8 | |
| July | 6.9 | 0.3 | 2.6 | 0.9 | 41.9 | 3.2 | 13.7 | : | 8.7 | 5.8 | 0.0 | 10.5 | 3.7 | |
| August | 7.0 | 0.3 | 2.6 | 0.9 | 49.7 | 3.2 | 11.3 | 3.0 | 8.7 | 5.8 | 0.0 | 10.5 | 4.1 | |
| September | 7.0 | 0.3 | 2.6 | 0.9 | 49.7 | 3.2 | 11.2 | : | 8.7 | 5.8 | 0.0 | 10.5 | 4.1 | |
| October | 4.9 | 0.2 | 2.6 | 0.9 | 49.7 | 3.2 | 11.2 | : | 0.0 | 5.8 | 0.0 | 0.0 | 3.7 | |
| November | 5.8P | 0.2 | 1.9 | 5.9 | 49.7 | 3.2P | 11.2 | 2.3 | 0.0 | 5.8 | 0.5 | 0.0P | 4.0 | |

VERBRAUCHERPREISE
TABAK

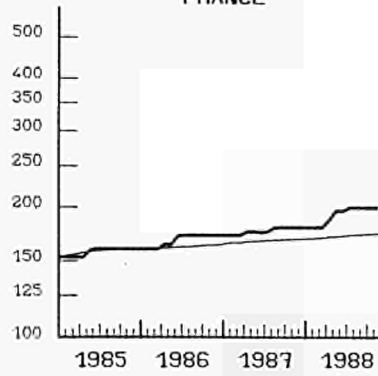
CONSUMER PRICES
TABACCO
1980 = 100

PRIX A LA CONSOMMATION
TABAC

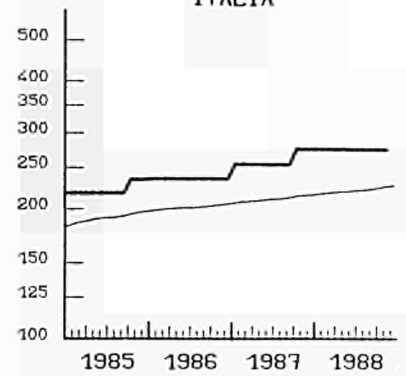
BR DEUTSCHLAND



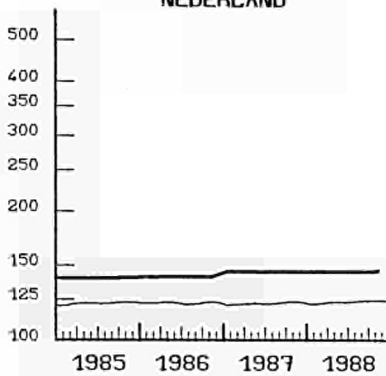
FRANCE



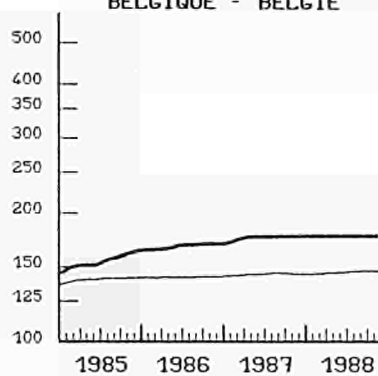
ITALIA



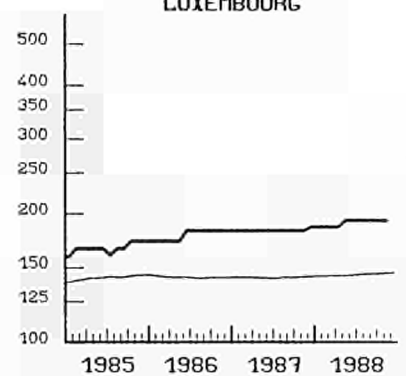
NEDERLAND



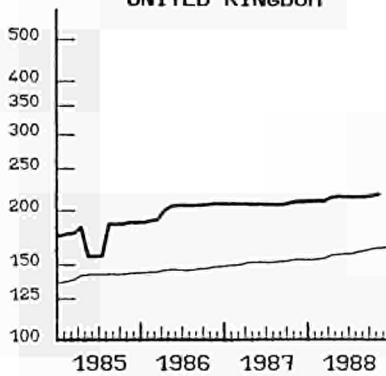
BELGIQUE - BELGIE



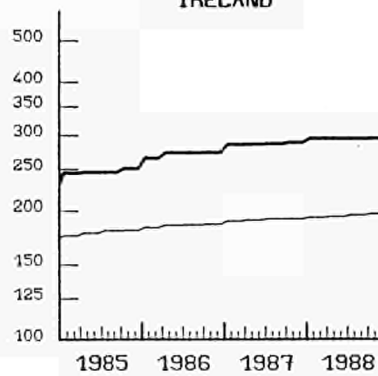
LUXEMBOURG



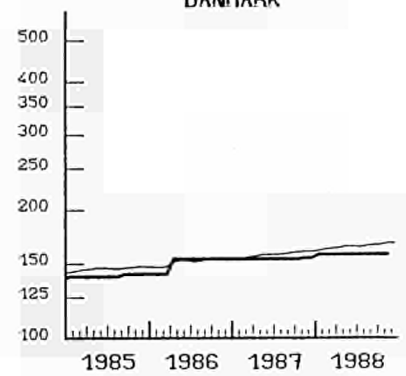
UNITED KINGDOM



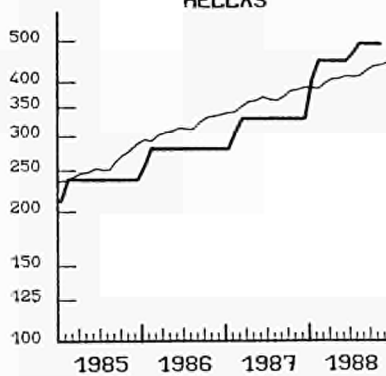
IRELAND



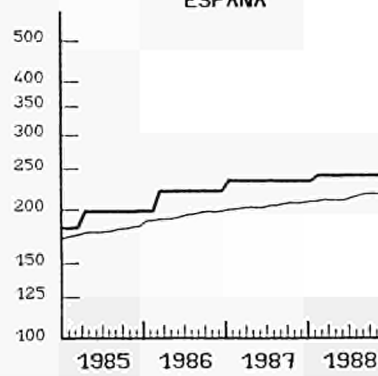
DANMARK



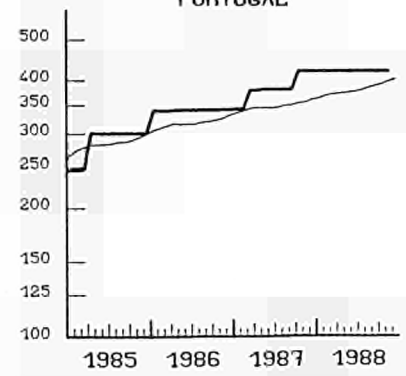
HELLAS



ESPANA



PORTUGAL



— TOBACCO

— GENERAL

EINFACH-LOGARITHMISCHE SKALA

SEMI-LOGARITHMIC SCALE

ECHELLE SEMI-LOGARITHMIQUE

**Venta y suscripciones · Salg og abonnement · Verkauf und Abonnement · Πωλήσεις και συνδρομές
Sales and subscriptions · Vente et abonnements · Vendita e abbonamenti
Verkoop en abonnementen · Venda e assinaturas**

BELGIQUE / BELGIË

Moniteur belge / Belgisch Staatsblad

42, Rue de Louvain / Leuvenseweg 42
1000 Bruxelles / 1000 Brussel
Tél. 5 12 00 26
CCP / Postrekening 000-2005502-27

Sous-dépôts / Agentschappen:

**Librairie européenne /
Europese Boekhandel**

Rue de la Loi 244 / Wetstraat 244
1040 Bruxelles / 1040 Brussel

Jean De Lannoy

Avenue du Roi 202 / Koningslaan 202
1060 Bruxelles / 1060 Brussel
Tél. (02) 538 5169
Télex 63220 UNBOOK B

CREDOC

Rue de la Montagne 34 / Bergstraat 34
Bte 11 / Bus 11
1000 Bruxelles / 1000 Brussel

DANMARK

J. H. Schultz Information A/S

EF-Publikationer

Ottiliavej 18
2500 Valby
Tlf. 01 44 23 00
Telefax: 01 44 15 12
Girokonto 6 00 08 86

BR DEUTSCHLAND

Bundesanzeiger Verlag

Breite Straße
Postfach 10 80 06
5000 Köln 1
Tel. (02 21) 20 29-0
Fernschreiber:
ANZEIGER BONN 8 882 595
Telefax: 20 29 278

GREECE

G.C. Eleftheroudakis SA

International Bookstore
4 Nikis Street
105 63 Athens
Tel.: 322 22 55
Telex: 2194 10 ELEF
Telefax: 3254 889

Sub-agent for Northern Greece:

Molho's Bookstore

The Business Bookshop
10 Tsimiski Street
Thessaloniki
Tel. 275 271
Telex 412885 LIMO

ESPAÑA

Boletín Oficial del Estado

Trafalgar 27
E-28010 Madrid
Tel. (91) 446 60 00

Mundi-Prensa Libros, S.A.

Castelló 37
E-28001 Madrid
Tel. (91) 431 33 99 (Libros)
431 32 22 (Suscripciones)
435 36 37 (Dirección)
Telex 49370-MPLI-E
Telefax: (91) 275 39 98

FRANCE

**Journal officiel
Service des publications
des Communautés européennes**

26, rue Desaix
75727 Paris Cedex 15
Tél. (1) 40 58 75 00
Télécopieur: (1) 4058 7574

IRELAND

Government Publications Sales Office

Sun Alliance House
Molesworth Street
Dublin 2
Tel. 71 03 09

or by post

Government Stationery Office

EEC Section

6th floor
Bishop Street
Dublin 8
Tel. 78 16 66

ITALIA

Licosa Spa

Via Benedetto Fortini, 120/10
Casella postale 552
50 125 Firenze
Tel. 64 54 15
Telefax: 64 12 57
Telex 570466 LICOSA I
CCP 343 509

Subagenti:

Libreria scientifica Lucio de Biasio -AEIOU

Via Meravigli, 16
20 123 Milano
Tel. 80 76 79

Herder Editrice e Libreria

Piazza Montecitorio, 117-120
00 186 Roma
Tel. 67 94 628/67 95 304

Libreria giuridica

Via 12 Ottobre, 172/R
16 121 Genova
Tel. 59 56 93

GRAND-DUCHÉ DE LUXEMBOURG

Abonnements seulement
Subscriptions only
Nur für Abonnements

Messageries Paul Kraus

11, rue Christophe Plantin
L-2339 Luxembourg
Tél. 48 21 31
Télex 2515
CCP 49242-63

NEDERLAND

SDU uitgeverij

Christoffel Plantijnstraat 2
Postbus 20014
2500 EA 's-Gravenhage
Tel. (070) 78 98 80 (bestellingen)
Telefax: (070) 476351

PORTUGAL

Imprensa Nacional

Casa da Moeda, E.P.
Rua D. Francisco Manuel de Melo, 5
1092 Lisboa Codex
Tel. 69 34 14

Distribuidora Livros Bertrand Lda.

Grupo Bertrand, SARL
Rua das Terras dos Vales, 4-A
Apart. 37
2700 Amadora Codex
Tel. 493 90 50 - 494 87 88
Telex 15798 BERDIS

UNITED KINGDOM

HMSO Books (PC 16)

HMSO Publications Centre
51 Nine Elms Lane
London SW8 5DR
Tel. (01) 873 9090
Fax: GP3 873 8463

Sub-agent:

Alan Armstrong Ltd

2 Arkwright Road
Reading, Berks RG2 0SQ
Tel. (0734) 75 17 71
Telex 849937 AAALTD G
Fax: (0734) 755164

ÖSTERREICH

Manz'sche Verlagsbuchhandlung

Kohlmarkt 16
1014 Wien
Tel. (0222) 533 17 81
Telex 11 25 00 BOX A
Telefax: (0222) 533 17 81 81

TURKIYE

Dünya süper veb ofset A.Ş.

Narlıbahçe Sokak No. 15
Cağaloğlu
İstanbul
Tel. 512 01 90
Telex: 23822 dsvo-tr

UNITED STATES OF AMERICA

**European Community Information
Service**

2100 M Street, NW
Suite 707
Washington, DC 20037
Tel. (202) 862 9500

CANADA

Renouf Publishing Co., Ltd

61 Sparks Street
Ottawa
Ontario K1P 5R1
Tel. Toll Free 1 (800) 267 4164
Ottawa Region (613) 238 8985-6
Telex 053-4936

JAPAN

Kinokuniya Company Ltd

17-7 Shinjuku 3-Chome
Shinjuku-ku
Tokyo 160-91
Tel. (03) 354 0131

Journal Department

PO Box 55 Chitose
Tokyo 156
Tel. (03) 439 0124

**AUTRES PAYS
OTHER COUNTRIES
ANDERE LANDER**

**Office des publications officielles
des Communautés européennes**

2, rue Mercier
L-2985 Luxembourg
Tél. 49 92 81
Télex PUBOF LU 1324 b
CC bancaire BIL 8-109/6003/700

60
897
200

Price (excl. VAT) in Luxembourg: Single copy ECU 4.40 • Subscription ECU 46.50



OFICINA DE PUBLICACIONES OFICIALES DE LAS COMUNIDADES EUROPEAS
KONTORET FOR DE EUROPÆISKE FÆLLESSKABERS OFFICIELLE PUBLIKATIONER
AMT FÜR AMTLICHE VERÖFFENTLICHUNGEN DER EUROPÄISCHEN GEMEINSCHAFTEN
ΥΠΗΡΕΣΙΑ ΕΠΙΣΗΜΩΝ ΕΚΔΟΣΕΩΝ ΤΩΝ ΕΥΡΩΠΑΙΚΩΝ ΚΟΙΝΟΤΗΤΩΝ
OFFICE FOR OFFICIAL PUBLICATIONS OF THE EUROPEAN COMMUNITIES
OFFICE DES PUBLICATIONS OFFICIELLES DES COMMUNAUTÉS EUROPÉENNES
UFFICIO DELLE PUBBLICAZIONI UFFICIALI DELLE COMUNITÀ EUROPEE
BUREAU VOOR OFFICIELE PUBLIKATIES DER EUROPESE GEMEENSCHAPPEN
SERVIÇO DAS PUBLICAÇÕES OFICIAIS DAS COMUNIDADES EUROPEIAS

ISSN 1010-2779

L - 2985 Luxembourg

Catalogue number: CA-CB-89-001-EN-C