

# Consumer price index

10 □ 1989 Monthly

## *PRICES: Significant increase for EUR 12 in September (+0.6%).*

After 4 months in a row with moderate increases, the rise in the CPI for the Community as a whole between August and September was significant (+0.6%). This rise was the result of substantial increases in most of the member states. The most important increases were reported from Greece (+3.6%), Spain (+1.1%) and the United Kingdom (+0.7%). Increases in the other countries were below the Community average: +0.5% in Italy, Belgium and the Netherlands, +0.4% in Denmark, 0.3% in France (\*) and in Luxemburg and +0.2% in Germany and Portugal. September 1989 compared with December 1988 shows that prices for the EC as a whole went up by 4.2%, against 3.2% during the first 9 months of 1988.

For the Member States the rates are as follows:

	<u>SEP.89</u> DEC.88	<u>SEP.88</u> DEC.87		<u>SEP.89</u> DEC.88	<u>SEP.88</u> DEC.87
Netherlands	1.2	1.1	Ireland	3.9	2.0
Germany	2.6	1.1	Italy	4.4	3.5
France	2.9	2.6	United K.	5.7	4.9
Luxemburg	3.1	1.4	Spain	5.8	4.9
Belgium	3.2	1.7	Portugal	8.7	7.7
Danemark	3.8	3.6	Greece	9.5	9.2

These figures show that inflation in all the Member States was higher during the first 9 months of 1989 than during the corresponding period of 1988.

The inflation rate over 12 months (September 1989 compared with September 1988) is 5.3% for the EC, against 4.3% for the United States and 2.7% for Japan. The corresponding rates for some non-Community countries are: Switzerland 3.4%, Austria 2.5%, Norway +4.2%, Sweden +6.4%, Finland +6.7%, Canada +5.2%.

For the member states see Table I, page 4.

\* Estimate EUROSTAT.

### **GENERAL INDEX EXCLUDING TOBACCO**

In the framework of the Commission's program "Europe against cancer" Eurostat regularly calculates and publishes an index excluding tobacco products. The aim of this index is to make clear to the public and the social partners the effects of adjustments in taxation on tobacco products which are foreseen in the program "Europe against cancer". See pages 8 and 9 in this bulletin.

OFICINA ESTADÍSTICA DE LAS COMUNIDADES EUROPEAS  
DE EUROPÆISKE FÆLLESSKABERS STATISTISKE KONTOR  
STATISTISCHES AMT DER EUROPÄISCHEN GEMEINSCHAFTEN  
ΣΤΑΤΙΣΤΙΚΗ ΥΠΗΡΕΣΙΑ ΤΩΝ ΕΥΡΩΠΑΪΚΩΝ ΚΟΙΝΟΤΗΤΩΝ  
STATISTICAL OFFICE OF THE EUROPEAN COMMUNITIES  
OFFICE STATISTIQUE DES COMMUNAUTÉS EUROPÉENNES  
ISTITUTO STATISTICO DELLE COMUNITÀ EUROPEE  
BUREAU VOOR DE STATISTIEK DER EUROPESE GEMEENSCHAPPEN  
SERVIÇO DE ESTATÍSTICA DAS COMUNIDADES EUROPEIAS

L-2920 Luxembourg – Tél. 43011 – Télex : Comeur Lu 3423  
B-1049 Bruxelles, bâtiment Berlaymont, rue de la Loi 200 (bureau de liaison) – Tél. 235 11 11

The information included in this bulletin has been taken from the Cronos data bank, which is accessible via the different host companies. For all information about these host companies contact Eurostat in Luxembourg, tel. 4301-4567.

To obtain specifications of the principal characteristics of the series contained in this bulletin contact Luxembourg:

**Mr Nijenhuis, tel. 4301-3202**

**Mr Desantis, tel. 4301-3511**

VERBRAUCHERPREISE  
GESAMTINDEX

CONSUMER PRICES  
GENERAL INDEX

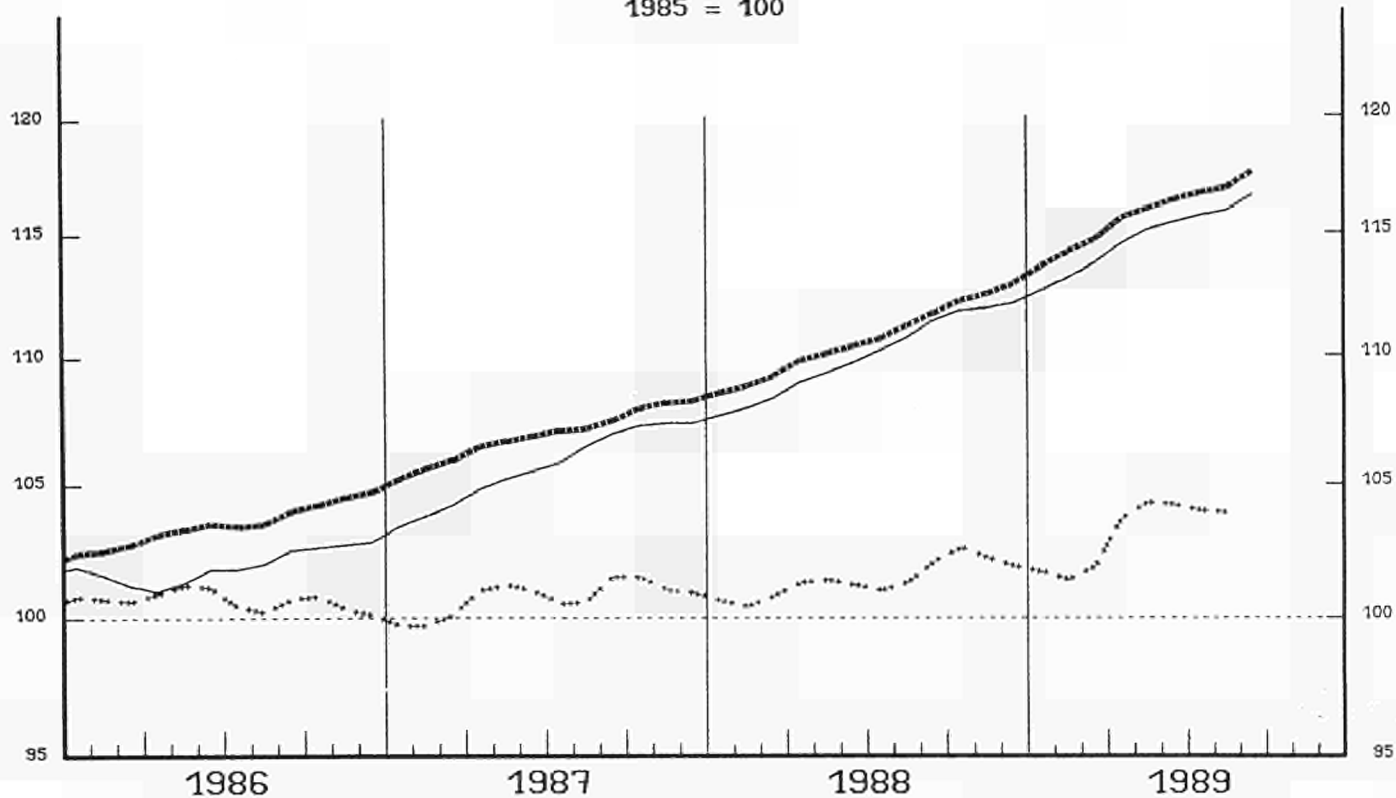
PRIX A LA CONSOMMATION  
INDICE GENERAL

— USA

----- EUR 12

..... JAPAN

1985 = 100



EINFACH-LOGARITHMISCHE SKALA

SERI-LOGARITHMIC SCALE

ECHELLE SERI-LOGARITHMIQUE

VERÄNDERUNG \* T/T-12

VARIATION \* T/T-12

VARIATION \* T/T-12

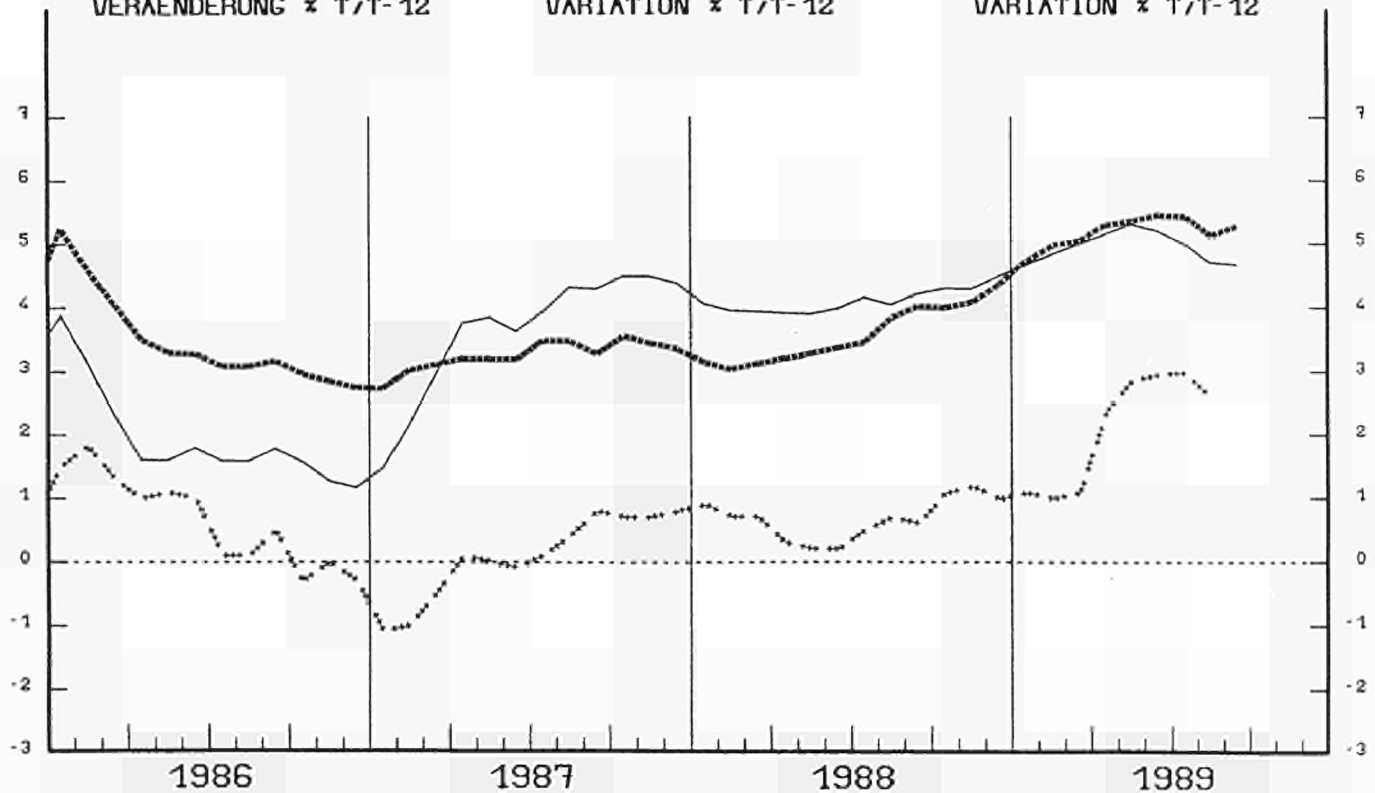


TABLE I

## CONSUMER PRICES

## GENERAL INDEX

	EUR 12	B	DK	D	GR	E	F	IRL	I	L	NL	P	UK	
	Price indices							1985=100						
Annual average														
1985	100.0	100.0	100.0	100.0	100.0	100.0	100.0	100.0	100.0	100.0	100.0	100.0	100.0	
1986	103.6	101.3	103.6	99.7	123.0	108.8	102.7	103.8	105.8	100.3	100.2	115.0	103.4	
1987	107.0	102.9	107.8	100.0	143.2	114.5	105.9	107.1	110.9	100.2	99.8	125.8	107.7	
1988	110.8	104.1	112.7	101.2	162.5	120.0	108.7	109.4	116.5	101.7	100.6	138.0	113.0	
1988														
September	111.7	104.7	113.7	101.3	166.9	122.4	109.6	:	117.4	102.1	101.2	140.7	114.6	
October	112.2	104.7	113.9	101.4	171.0	122.5	109.8	:	118.3	102.3	101.3	142.6	115.7	
November	112.5	104.6	114.7	101.7	172.2	122.5	109.9	110.5	119.2	102.6	101.4	144.1	116.3	
December	112.9	105.0	114.7	101.9	174.1	123.5	110.1	:	119.5	102.6	101.3	145.9	116.6	
1989														
January	113.6	105.4	115.2	103.0	173.6	124.7	110.6	:	120.3	103.4	100.4	147.8	117.3	
February	114.2	105.9	115.9	103.3	172.8	125.0	110.9	112.0	121.3	103.7	100.7	149.8	118.2	
March	114.7	106.1	116.7	103.5	177.5	125.7	111.2	:	122.0	104.0	101.1	151.1	118.7	
April	115.6	106.8	117.4	104.0	180.4	126.1	111.9	:	122.6	104.3	101.6	152.7	120.8	
May	116.0	106.9	118.2	104.2	181.0	126.3	112.3	113.1	123.2	104.7	101.6	153.0	121.6	
June	116.4	107.1	117.9	104.5	183.9	127.0	112.5	:	123.7	105.0	101.5	154.0	122.0	
July	116.7	107.5	117.9	104.3	183.6	129.0	112.8	:	123.9	105.3	101.7	155.5	122.1	
August	116.9P	107.8	118.6	104.2	184.1	129.3	113.0	114.8	124.1P	105.5	102.0	158.3	122.4	
September	117.6P	108.4	119.1P	104.5	190.7	130.7	113.3E	:	124.7P	105.8	102.5	158.6	123.3	
	Rates of increase over one month (IRL 3 months)							(T/T-1)						
1988														
Sept./August	0.4	0.1	0.5	0.0	3.0	1.0	0.2	:	0.5	0.1	0.3	1.1	0.5	
Oct./Sept.	0.4	0.0	0.2	0.1	2.5	0.1	0.2	:	0.8	0.2	0.1	0.9	1.0	
Nov./Oct.	0.3	-0.1	0.7	0.2	0.7	-0.1	0.1	0.6	0.8	0.3	0.1	1.5	0.5	
Dec./Nov.	0.3	0.4	0.0	0.2	1.1	0.8	0.2	:	0.3	0.0	-0.1	1.2	0.3	
1989														
Jan/Dec	0.6	0.4	0.5	1.1	-0.3	1.0	0.4	:	0.7	0.7	-0.9	1.3	0.6	
Feb./Jan.	0.5	0.4	0.7	0.3	-0.4	0.2	0.3	1.4	0.8	0.3	0.3	1.4	0.7	
March/Feb.	0.4	0.2	0.6	0.2	2.7	0.6	0.3	:	0.6	0.3	0.4	0.9	0.4	
April/March	0.8	0.7	0.6	0.6	1.6	0.3	0.6	:	0.5	0.3	0.5	1.1	1.8	
May/April	0.3	0.1	0.7	0.2	0.3	0.1	0.4	1.0	0.5	0.4	0.0	0.2	0.6	
June/May	0.3	0.2	-0.3	0.2	1.6	0.5	0.1	:	0.4	0.3	-0.1	0.7	0.3	
July/June	0.3	0.3	0.0	-0.2	-0.2	1.6	0.3	:	0.2	0.3	0.2	1.0	0.1	
August/July	0.2P	0.3	0.6	-0.1	0.3	0.2	0.2	1.5	0.2P	0.1	0.3	1.8	0.3	
Sept./August	0.6P	0.5	0.4P	0.2	3.6	1.1	0.3E	:	0.5P	0.3	0.5	0.2	0.7	
	Rates of increase over 12 months							(T/T-12)						
1988/87														
September	4.0	1.2	4.5	1.4	14.8	5.7	3.0	:	4.9	1.8	1.0	11.0	5.9	
October	3.9	1.3	4.2	1.3	14.1	5.2	3.0	:	4.9	2.0	0.9	10.7	6.4	
November	4.1	1.6	4.6	1.6	14.1	5.4	3.0	2.7	5.3	2.1	1.1	11.9	6.4	
December	4.3	1.9	4.5	1.6	14.0	5.9	3.1	:	5.4	1.9	1.2	11.7	6.8	
1989/88														
January	4.8	2.4	4.6	2.6	13.8	6.3	3.3	:	5.5	2.5	0.9	12.2	7.5	
February	4.9	2.6	4.4	2.6	13.8	6.2	3.4	3.4	5.9	2.7	1.0	12.1	7.8	
March	5.0	2.8	4.7	2.7	13.5	6.0	3.4	:	6.1	2.8	0.9	12.4	7.9	
April	5.3	3.0	4.9	3.0	13.0	6.8	3.6	:	6.3	3.2	1.1	13.2	8.0	
May	5.4	3.0	4.8	3.1	13.1	7.0	3.7	3.8	6.5	3.5	1.0	13.0	8.3	
June	5.4	3.0	4.5	3.1	13.4	7.1	3.6	:	6.5	3.6	1.0	13.2	8.3	
July	5.5	3.0	5.0	3.0	13.5	7.5	3.5	:	6.5	3.4	1.1	13.3	8.2	
August	5.1P	3.2	4.9	2.9	13.6	6.7	3.4	4.5	6.3P	3.4	1.1	13.7	7.3	
September	5.3P	3.5	4.7P	3.1	14.3	6.8	3.4E	:	6.2P	3.6	1.3	12.7	7.6	

TABLE II

	CONSUMER PRICES					GENERAL INDEX			
	U.S.A	Japan	Switzerland	Austria	Norway	Sweden	Finland	Canada	
	Price indices					1985=100			
<b>Annual average</b>									
1985	100.0	100.0	100.0	100.0	100.0	100.0	100.0	100.0	
1986	101.9	100.6	100.8	101.7	107.2	104.2	103.6	104.1	
1987	105.7	100.7	102.2	103.1	116.5	108.6	107.4	108.7	
1988	110.0	101.4	104.2	105.1	124.3	114.9	112.7	113.1	
<b>1988</b>									
September	111.4	102.1	104.3	105.9	126.1	116.3	114.2	114.0	
October	111.8	102.6	104.5	105.6	126.2	117.2	114.4	114.5	
November	111.9	102.2	104.9	105.5	126.2	117.4	114.6	114.9	
December	112.1	101.9	105.0	105.5	126.2	117.7	115.5	114.9	
<b>1989</b>									
January	112.6	101.7	105.6	106.2	127.1	119.0	116.0	115.4	
February	113.1	101.4	106.1	106.6	127.6	119.7	116.6	116.2	
March	113.7	101.9	106.4	106.8	128.7	120.1	117.9	116.7	
April	114.5	103.7	106.9	107.1	129.4	121.3	119.1	117.1	
May	115.1	104.3	107.0	107.3	129.8	121.8	119.5	118.3	
June	115.4	104.2	107.2	107.6	130.6	122.2	120.6	118.9	
July	115.7	104.0	106.9	108.8	130.7	122.2	120.5	119.7	
August	115.9	103.9	107.3	109.2	130.3	122.7	120.6	119.8	
September	<b>116.2</b>	<b>104.9P</b>	<b>107.8</b>	<b>108.5</b>	<b>131.4</b>	<b>123.7</b>	<b>121.9</b>	<b>119.9</b>	
	Rates of increase over one month (IRL 3 months)					(T/T-1)			
<b>1988</b>									
Sept./August	0.7	0.8	0.1	-0.6	1.3	0.7	1.0	0.1	
Oct./Sept.	0.3	0.5	0.2	-0.3	0.1	0.8	0.1	0.5	
Nov./Oct.	0.1	-0.4	0.4	-0.1	0.0	0.2	0.2	0.3	
Dec./Nov.	0.2	0.3	0.1	0.0	0.0	0.2	0.9	0.0	
<b>1989</b>									
Jan/Dec	0.5	-0.2	0.6	0.7	0.7	1.2	0.5	0.5	
Feb./Jan.	0.4	-0.3	0.5	0.5	0.4	0.5	0.5	0.7	
March/Feb.	0.6	0.5	0.3	0.1	0.9	0.4	1.1	0.5	
April/March	0.7	1.8	0.5	0.3	0.5	1.0	1.0	0.3	
May/April	0.6	0.6	0.1	0.2	0.3	0.4	0.4	1.0	
June/May	0.2	-0.1	0.2	0.3	0.6	0.3	0.9	0.5	
July/June	0.2	-0.2	-0.3	1.1	0.1	0.0	-0.1	0.7	
August/July	0.2	-0.1	0.3	0.4	-0.3	0.4	0.1	0.1	
Sept./August	<b>0.3</b>	<b>1.0P</b>	<b>0.4</b>	<b>-0.7</b>	<b>0.9</b>	<b>0.8</b>	<b>1.1</b>	<b>0.1</b>	
	Rates of increase over 12 months					(T/T-12)			
<b>1988/87</b>									
September	4.2	0.6	2.0	1.9	6.4	5.5	5.5	4.1	
October	4.2	1.1	1.8	1.8	6.4	5.9	5.5	4.2	
November	4.2	1.2	1.9	2.0	6.2	5.7	5.6	4.1	
December	4.4	1.0	2.0	1.9	5.6	6.0	6.6	4.0	
<b>1989/88</b>									
January	4.7	1.1	2.3	2.2	5.2	6.6	5.8	4.3	
February	4.8	1.0	2.3	2.3	4.9	6.4	6.0	4.6	
March	5.0	1.1	2.4	2.2	4.3	6.3	6.6	4.6	
April	5.1	2.4	2.7	2.4	4.6	6.4	6.9	4.6	
May	5.4	2.9	2.9	2.8	4.7	6.5	6.4	5.0	
June	5.2	3.0	3.0	2.5	4.7	6.6	6.8	5.4	
July	5.0	3.0	2.9	2.5	4.8	6.1	6.7	5.4	
August	4.7	2.6	3.0	2.6	4.6	6.3	6.6	5.2	
September	<b>4.3</b>	<b>2.7P</b>	<b>3.4</b>	<b>2.5</b>	<b>4.2</b>	<b>6.4</b>	<b>6.7</b>	<b>5.2</b>	

**VERBRAUCHERPREISE**

GESAMTINDEX

VEARENDRUNG \* T/T-12

**CONSUMER PRICES**

GENERAL INDEX

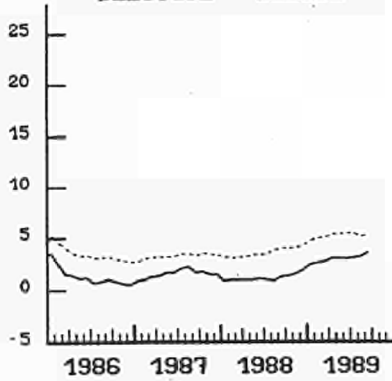
VARIATION \* T/T-12

**PRIX A LA CONSOMMATION**

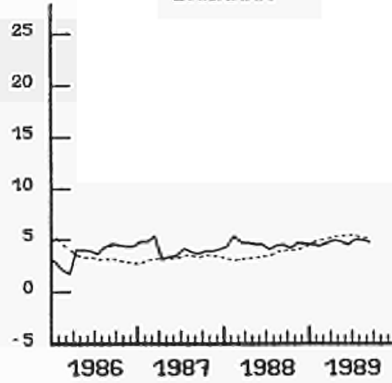
INDICE GENERAL

VARIATION \* T/T-12

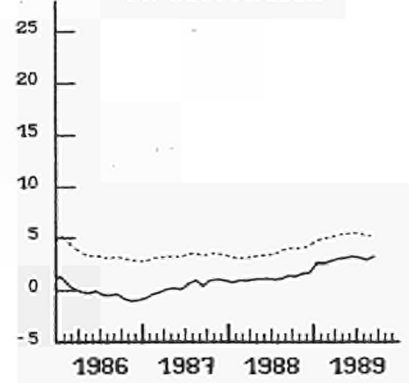
**BELGIQUE - BELGIE**



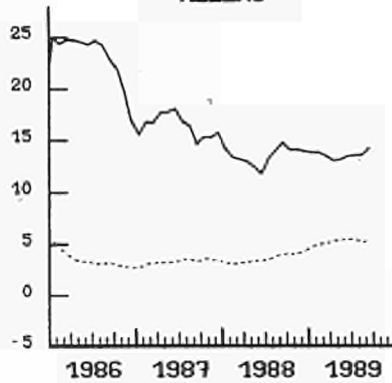
**DANMARK**



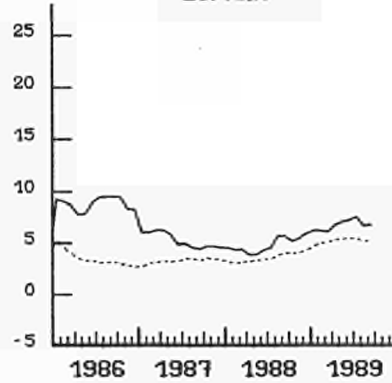
**BR DEUTSCHLAND**



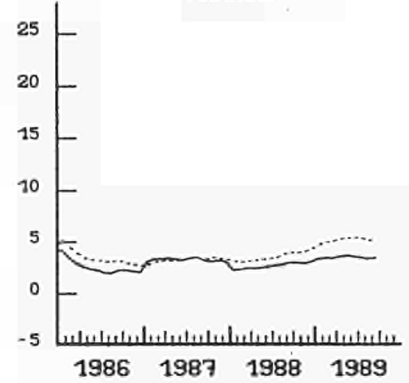
**HELLAS**



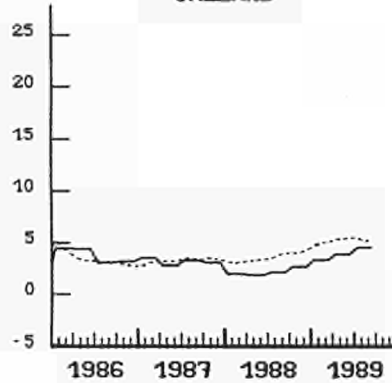
**ESPAÑA**



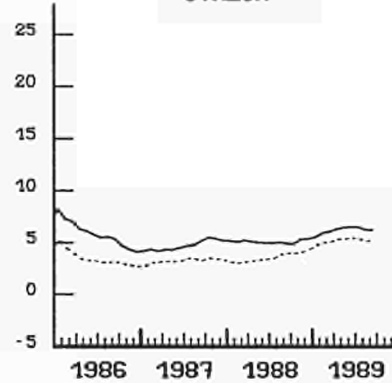
**FRANCE**



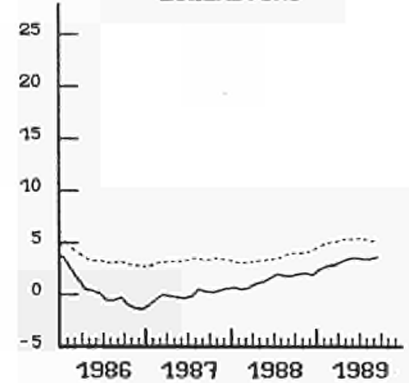
**IRELAND**



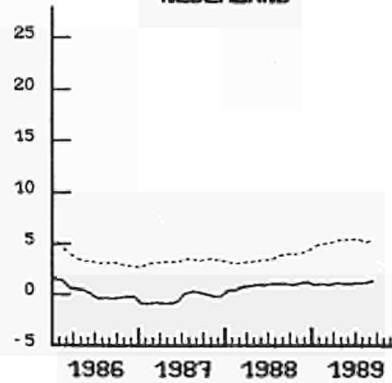
**ITALIA**



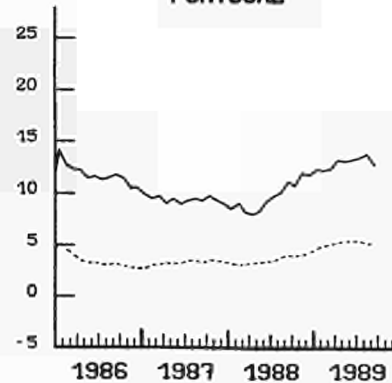
**LUXEMBOURG**



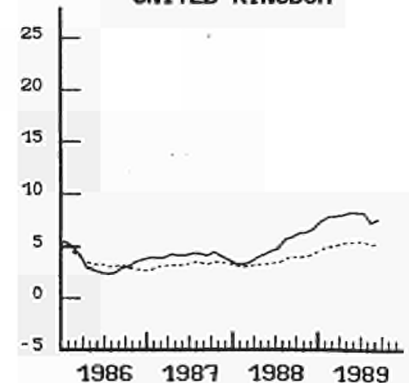
**NEDERLAND**



**PORTUGAL**



**UNITED KINGDOM**



..... EUR 12



## ***EXPLANATORY NOTES***

### **METHODOLOGY**

The consumer price indices given here are the national indices which have different names in each country. As far as trends are concerned, the general index published by EUROSTAT always corresponds to the general index published by the country. The component items of this general index are groups of national indices aggregated according to a harmonized classification conforming to the ESA (European System of Integrated Economic Accounts). For these groups, the price trends correspond to the trends noted by the national indices for the same classification field. The field covered by the general index varies according to country: as regards the population concerned (specific income bracket, certain socio-professional categories or total households), the geographical areas used (capital, urban areas, country as a whole, etc.) or differences in treatments of expenditure on rent, health care, etc... Finally, there is no uniform method for seasonal adjustments. A fixed base system is used in some countries, whereas in others a chain system is used (variable weightings). The reference years used at national level for the indices vary according to country. For ease of comparison, EUROSTAT has chosen 1985 as the common year for the presentation of these indices.

### **THE CALCULATION OF THE EUR-12 INDEX**

The Eur-12 index as calculated by EUROSTAT is a weighted average of national price indices. The weight used is the proportion of each country in the final consumption of households for EUR-12. The values of this consumption in national currency are converted into purchasing power standard (PPS); for this purpose the purchasing power parities of the G.D.P. are used. Up to 1987 purchasing power parities are those which result from the 1980 enquiry, from 1988 onwards they are those from the 1985 enquiry. The index calculated is a chain index of the "Laspeyres" type with weights changing each year. However, the weights are lagged by three years since the national accounts data needed become available only after three years. For example: the weights used for 1989 are those of 1986, for 1988 those of 1985. Moreover, national accounts data are often revised leading to revisions of the consumption weights. In order to avoid continuous modifications in the EUR-12 index for previous periods, EUROSTAT has decided to "freeze" the weights which are used. Thus the EUR-12 index will not be affected by revisions of the national accounts. However when Member States carry out major revisions in the price series for past years, EUR-12 data will be calculated using these new series.

TABLE III

## CONSUMER PRICES

## GENERAL INDEX EXCLUDING TOBACCO PRODUCTS

	EUR 12	B	DK	D	GR	E	F	IRL	I	L	NL	P	UK	
	General index excluding tobacco products							1985=100						
Annual average														
1985	100.0	100.0	100.0	100.0	100.0	100.0	100.0	100.0	100.0	100.0	100.0	100.0	100.0	
1986	103.5	101.2	103.5	99.7	123.2	109.8	102.4	103.5	105.8	100.1	100.3	111.7	103.2	
1987	107.0	102.7	107.8	100.0	143.4	115.5	105.7	106.7	110.7	100.0	100.1	122.1	107.5	
1988	110.8	103.9	112.7	101.2	161.9	121.1	108.4	109.0	116.2	101.4	101.0	133.9	112.8	
<b>1988</b>														
August	111.3	104.4	113.1	101.2	161.2	122.3	109.0	109.3	116.6	101.7	101.3	135.1	113.9	
September	111.8	104.5	113.7	101.3	166.1	123.5	109.2	:	117.2	101.8	101.6	136.6	114.5	
October	112.3	104.6	113.9	101.4	170.4	123.7	109.5	:	118.1	102.0	101.7	137.9	115.6	
November	112.6	104.5	114.8	101.6	171.6	123.6	109.6	110.3P	118.6	102.4	101.8	140.0	116.2	
December	113.0	104.9	114.8	101.8	173.5	124.6	109.8	:	119.1	102.3	101.7	141.7	116.5	
<b>1989</b>														
January	113.7	105.3	115.3	102.8	172.8	125.8	110.3	:	119.9	103.0	100.8	143.6	117.2	
February	114.1	105.7	116.1	103.1	171.8	126.1	110.6	111.3	120.8	103.3	101.1	145.5	118.1	
March	114.6	105.9	116.8	103.3	176.6	126.9	110.9	:	121.4	103.7	101.5	146.9	118.6P	
April	115.6	106.7	117.6	104.0	179.5	127.3	111.6	:	122.3	104.0	101.1	148.4	120.8	
May	116.0	106.8	118.4	104.1	180.1	127.5	112.1	112.6	122.9	104.4	101.1	148.7	121.6	
June	116.4	107.0	118.1	104.4	183.0	128.1	112.2	:	123.4	104.7	101.0	149.4	122.1	
July	116.7	107.3	118.1	104.2	182.7	130.3	112.5	:	123.7	105.0	101.3	150.9	122.2	
August	116.9P	107.7	118.8	104.1	183.3	130.5	112.7	114.4	123.9P	105.2	101.6	153.6	122.5	
	Rates of increase over one month (IRL 3 months)							(T/T-1)						
<b>1988</b>														
August/July	0.5	0.2	0.7	0.0	0.1	1.0	0.3	0.8	0.5	0.1	0.3	1.4	1.2	
Sept./August	0.5	0.1	0.6	0.1	3.1	1.0	0.2	:	0.5	0.1	0.3	1.1	0.5	
Oct./Sept.	0.5	0.0	0.2	0.1	2.5	0.1	0.2	:	0.8	0.2	0.1	0.9	1.0	
Nov./Oct.	0.3	-0.1	0.7	0.2	0.7	-0.1	0.1	0.9P	0.4	0.3	0.1	1.5	0.5	
Dec./Nov.	0.3	0.4	0.0	0.2	1.2	0.8	0.2	:	0.4	-0.1	-0.1	1.2	0.3	
<b>1989</b>														
Jan/Dec	0.6	0.4	0.5	1.0	-0.4	1.0	0.4	:	0.7	0.7	-0.9	1.3	0.6	
Feb./Jan.	0.5	0.4	0.7	0.3	-0.6	0.2	0.3	1.3	0.8	0.3	0.3	1.4	0.8	
March/Feb.	0.4	0.2	0.6	0.2	2.8	0.6	0.3	:	0.5	0.3	0.5	0.9	0.4	
April/March	0.8	0.7	0.7	0.6	1.7	0.3	0.6	:	0.5	0.3	0.6	1.1	1.9	
May/April	0.4	0.1	0.7	0.2	0.3	0.1	0.4	1.1	0.5	0.4	0.0	0.2	0.7	
June/May	0.3	0.2	-0.3	0.2	1.6	0.5	0.1	:	0.4	0.3	-0.1	0.5	0.4	
July/June	0.3	0.3	0.0	-0.2	-0.2	1.7	0.3	:	0.2	0.3	0.2	1.0	0.1	
August/July	0.2P	0.3	0.6	-0.1	0.3	0.2	0.1	1.6	0.2P	0.1	0.3	1.8	0.2	
	Rates of increase over 12 months							(T/T-12)						
<b>1988/87</b>														
August	3.8	0.9	4.5	1.2	13.3	5.7	2.6	2.1	5.0	1.7	1.2	10.0	5.7	
September	3.9	1.2	4.5	1.4	14.2	5.7	2.8	:	4.7	1.7	1.1	11.0	5.9	
October	4.0	1.4	4.2	1.4	13.4	5.3	2.8	:	5.0	1.9	0.7	10.8	6.5	
November	4.1	1.6	4.7	1.6	13.5	5.4	2.8	2.9P	5.0	2.0	0.8	12.0	6.5	
December	4.3	1.9	4.6	1.7	13.3	5.9	2.9	:	5.3	1.8	1.0	11.8	6.9	
<b>1989/88</b>														
January	4.7	2.4	4.7	2.4	13.5	6.3	3.1	:	5.5	2.4	0.9	12.4	7.6	
February	4.9	2.5	4.6	2.5	13.7	6.2	3.3	3.4	5.7	2.6	1.1	12.3	8.0	
March	5.0	2.7	4.8	2.5	13.3	6.1	3.3	:	5.8	2.7	0.9	12.5	7.9	
April	5.3	3.0	5.1	3.0	12.8	6.8	3.5	:	6.3	3.1	1.2	13.4	8.2	
May	5.5	3.0	4.9	2.9	12.9	7.1	3.7	3.9	6.4	3.5	1.1	13.2	8.6	
June	5.5	3.0	4.7	3.0	13.3	7.2	3.6	:	6.5	3.6	1.1	13.1	8.6	
July	5.5	3.0	5.2	2.9	13.5	7.6	3.6	:	6.5	3.4	1.2	13.3	8.5	
August	5.2P	3.1	5.0	2.9	13.7	6.7	3.4	4.6	6.3P	3.4	1.2	13.7	7.6	



TABLE IV

## CONSUMER PRICES

## TOBACCO PRODUCTS

	EUR 12	B	DK	D	GR	E	F	IRL	I	L	NL	P	UK
	Tobacco products							1985=100					
Annual average													
1985	100.0	100.0	100.0	100.0	100.0	100.0	100.0	100.0	100.0	100.0	100.0	100.0	100.0
1986	108.6	108.0	107.3	103.2	118.6	112.0	106.5	110.0	105.9	107.8	101.3	118.5	114.3
1987	114.2	113.3	109.6	103.1	137.6	120.6	111.9	116.4	116.7	110.0	104.3	133.6	117.8
1988	121.3	114.3	112.3	104.3	198.1	124.2	122.4	119.9	125.8	115.1	104.4	146.4	121.7
<b>1988</b>													
August	118.4	114.3	112.3	103.8	209.9	124.5	126.6	119.9	124.1	116.1	103.5	144.8	117.3
September	118.4	114.3	112.3	103.8	209.9	124.5	126.6	:	124.1	116.1	104.3	144.8	117.5
October	118.5	114.3	112.3	103.8	209.9	124.5	126.6	:	124.1	116.1	104.3	144.8	118.0
November	121.5	114.4	112.3	109.0	209.9	124.5	126.6	119.9	134.1	116.1	104.8	144.8	119.0
December	121.5	114.5	112.3	109.0	209.9	124.5	126.6	:	134.1	120.1	104.8	144.8	119.2
<b>1989</b>													
January	122.1	115.0	112.3	109.0	218.2	127.8	126.6	:	134.1	120.1	104.9	144.8	119.6
February	122.5	118.7	112.3	109.0	230.0	127.8	126.6	123.1	134.1	120.1	104.9	144.8	119.7
March	122.6	119.9	112.3	109.0	230.0	127.8	126.6	:	134.1	120.1	104.9	144.8	119.8
April	122.9	120.2	112.3	109.0	230.0	127.8	126.6	:	134.1	120.1	104.9	167.4	119.8
May	122.9	120.4	112.3	109.0	230.0	127.8	126.6	123.1	134.1	120.1	104.9	167.4	119.8
June	123.0	120.5	112.3	109.3	230.0	127.8	126.6	:	134.1	120.1	104.9	167.4	119.9
July	123.2	120.6	112.3	109.6	230.0	127.8	127.6	:	134.1	120.1	104.9	167.4	119.8
August	123.4P	120.2	113.0	109.8	230.0	127.8	128.7	123.2	134.1	120.1	104.9	167.4	119.7
	Rates of increase over one month (IRL 3 months)							(T/T-1)					
<b>1988</b>													
August/July	0.3	0.0	0.0	0.0	5.5	0.0	0.0	0.0	0.0	0.0	0.0	0.0	0.2
Sept./August	0.0	0.0	0.0	0.0	0.0	0.0	0.0	:	0.0	0.0	0.0	0.0	0.2
Oct./Setp.	0.1	0.0	0.0	0.0	0.0	0.0	0.0	:	0.0	0.0	0.0	0.0	0.4
Nov./Oct.	2.5	0.1	0.0	5.0	0.0	0.0	0.0	0.0	8.1	0.0	0.5	0.0	0.8
Dec./Nov.	0.0	0.1	0.0	0.0	0.0	0.0	0.0	:	0.0	3.5	0.0	0.0	0.2
<b>1989</b>													
Jan/Dec	0.4	0.4	0.0	0.0	4.0	2.7	0.0	:	0.0	0.0	0.1	0.0	0.3
Feb./Jan.	0.4	3.3	0.0	0.0	5.4	0.0	0.0	2.6	0.0	0.0	0.0	0.0	0.1
March/Feb.	0.1	1.0	0.0	0.0	0.0	0.0	0.0	:	0.0	0.0	0.0	0.0	0.1
April/March	0.2	0.3	0.0	0.0	0.0	0.0	0.0	:	0.0	0.0	0.0	15.6	0.0
May/April	0.0	0.2	0.0	0.0	0.0	0.0	0.0	0.0	0.0	0.0	0.0	0.0	0.0
June/May	0.1	0.1	0.0	0.4	0.0	0.0	0.0	:	0.0	0.0	0.0	0.0	0.1
July/June	0.1	0.1	0.0	0.2	0.0	0.0	0.8	:	0.0	0.0	0.0	0.0	-0.1
August/July	0.1P	-0.3	0.6	0.2	0.0	0.0	0.8	0.1	0.0	0.0	0.0	0.0	-0.1
	Rates of increase over 12 months							(T/T-12)					
<b>1988/87</b>													
August	6.1	0.3	2.6	0.9	49.7	3.2	11.3	3.0	8.7	5.8	0.0	9.3	4.1
September	6.1	0.3	2.6	0.9	49.7	3.2	11.2	:	8.7	5.8	0.0	9.3	4.1
October	4.5	0.2	2.6	0.9	49.7	3.2	11.2	:	0.0	5.8	0.0	-1.1	3.7
November	6.9	0.2	1.9	5.9	49.7	3.2	11.2	2.3	8.1	5.8	0.5	-1.1	3.9
December	6.9	0.3	1.9	5.9	49.7	3.2	11.2	:	8.1	7.2	0.5	-1.1	4.0
<b>1989/88</b>													
January	6.5	0.7	0.0	5.9	26.6	5.9	11.2	:	8.1	7.2	0.6	0.0	4.1
February	6.2	4.0	0.0	5.9	20.2	2.7	11.2	2.7	8.1	7.2	0.6	0.0	4.1
March	6.3	4.9	0.0	5.9	20.2	2.7	11.2	:	8.1	7.2	0.6	0.0	4.2
April	5.6	5.2	0.0	5.9	20.2	2.7	6.9	:	8.1	7.2	0.6	15.6	2.6
May	4.5	5.4	0.0	5.0	20.2	2.7	1.8	2.7	8.1	3.5	0.6	15.6	2.0
June	4.6	5.5	0.0	5.4	20.2	2.7	1.8	:	8.1	3.5	0.6	15.6	2.2
July	4.4	5.6	0.0	5.6	15.6	2.7	0.8	:	8.1	3.5	0.6	15.6	2.3
August	4.2P	5.2	0.6	5.8	9.6	2.7	1.6	2.8	8.1	3.5	0.6	15.6	2.0

### *Sources*

<b>DEUTSCHLAND</b>	Preise und Preisindizes für die Lebenshaltung <b>STATISTISCHES BUNDESAMT - WIESBADEN/DEUTSCHLAND</b>
<b>FRANCE</b>	Indices des prix à la consommation Bulletin mensuel de statistiques <b>INSEE - PARIS/FRANCE</b>
<b>ITALIA</b>	Indici dei prezzi al consumo <b>ISTAT - ROMA/ITALIA</b>
<b>NEDERLAND</b>	Maandstatistiek van de prijzen <b>C.B.S. - VOORBURG/NEDERLAND</b>
<b>BELGIQUE</b>	Index van de consumptie prijzen Dienst voor het indexcijfer <b>MINISTERIE VAN ECONOMISCHE ZAKEN - BRUSSEL/BELGIE</b>
<b>LUXEMBOURG</b>	Indice des prix à la consommation INDICATEURS RAPIDES <b>STATEC - LUXEMBOURG</b>
<b>UNITED KINGDOM</b>	Retail price index <b>DEPARTEMENT OF EMPLOYMENT - LONDON - UK</b>
<b>IRELAND</b>	Consumer Price Index <b>CENTRAL STATISTICAL OFFICE - DUBLIN/IRELAND</b>
<b>DANMARK</b>	Forbrugerprisindekset Prisstistik <b>DANMARKS STATISTIK - KOBENHAVN/DANMARK</b>
<b>ESPANA</b>	Indice de precios de consumo <b>INSTITUTO NACIONAL DE ESTADISTICA - MADRID - ESPAÑA</b>
<b>PORTUGAL</b>	Indice de precios no consumidor <b>INSTITUTO NACIONAL DE ESTADISTICA - LISBOA - PORTUGAL</b>
<b>GREECE</b>	Consumer price index <b>NATIONAL STATISTICAL OFFICE OF GREECE - ATHENS - GREECE</b>
<b>SCHWEIZ</b>	Landesindex der Konsumentenpreise <b>BUNDESAMT FUER GEWERBE,INDUSTRIE UND ARBEIT - BERN - SCHWEIZ</b>
<b>OESTERREICH</b>	Index der Verbraucherpreise <b>OESTERREICHISCHES STATISTISCHES ZENTRALAMT -WIEN OESTERREICH</b>
<b>NORWAY</b>	Konsumprisindeksen STATISTIK MANEDSHEFTE <b>STATISTIK SENTRALBYRA - OSLO - NORGE</b>
<b>SWEDEN</b>	Konsumpriserna: STATISTISKA MEDELLAN <b>STATISTISKA CENTRALBYRAN - STOCKHOLM/SVERIGE</b>
<b>FINLAND</b>	Consumer price index - MONTHLY BULLETIN <b>CENTRAL STATISTICAL OFFICE OF FINLAND - HELSINKI/FINLAND</b>
<b>U.S.A.</b>	Consumer price index - CPI-U U.S. City - Average for all urban consumers <b>U.S. BUREAU OF LABOR - WASHINGTON - U.S.A.</b>
<b>CANADA</b>	The consumer price index <b>STATISTICS CANADA - OTTAWA/CANADA</b>
<b>JAPAN</b>	Consumer price index <b>STATISTICS BUREAU MANAGEMENT AND COORDINATION AGENCY - TOKYO/JAPAN</b>

**Venta y suscripciones · Salg og abonnement · Verkauf und Abonnement · Πωλήσεις και συνδρομές  
Sales and subscriptions · Vente et abonnements · Vendita e abbonamenti  
Verkoop en abonnementen · Venda e assinaturas**

**BELGIQUE / BELGIË**

**Moniteur belge / Belgisch Staatsblad**

42, Rue de Louvain / Leuvenseweg 42  
1000 Bruxelles / 1000 Brussel  
Tél. 512 00 26  
Télécopieur: 511 01 84  
CCP / Postrekening 000-2005502-27

Sous-dépôts / Agentschappen:

**Librairie européenne / Europese Boekhandel**

Avenue Albert Jonnart 50 / Albert Jonnartlaan 50  
1200 Bruxelles / 1200 Brussel  
Tél. 734 02 81  
Télécopieur: 735 08 60

**Jean De Lannoy**

Avenue du Roi 202 / Koningslaan 202  
1060 Bruxelles / 1060 Brussel  
Tél. (02) 538 5169  
Télex 63220 UNBOOK B

**CREDOC**

Rue de la Montagne 34 / Bergstraat 34  
Bte 11 / Bus 11  
1000 Bruxelles / 1000 Brussel

**DANMARK**

**J. H. Schultz Information A/S**

**EF-Publikationer**

Otteliavej 18  
2500 Valby  
Tlf: 36 44 22 66  
Telefax: 36 44 01 41  
Girokonto 6 00 08 86

**BR DEUTSCHLAND**

**Bundesanzeiger Verlag**

Breite Straße  
Postfach 10 80 06  
5000 Köln 1  
Tel. (02 21) 20 29-0  
Fernschreiber:  
ANZEIGER BONN 8 882 595  
Telefax: 20 29 278

**GREECE**

**G.C. Eleftheroudakis SA**

International Bookstore  
4 Nikis Street  
105 63 Athens  
Tel.: 3226-323  
Telex: 219410 ELEF  
Telefax: 3254 889

Sub-agent for Northern Greece:

**Molho's Bookstore**

The Business Bookshop  
10 Tsimiski Street  
Thessaloniki  
Tel. 275 271  
Telex 412885 LIMO

**ESPAÑA**

**Boletín Oficial del Estado**

Trafalgar 27  
E-28010 Madrid  
Tel. (91) 446 60 00

**Mundi-Prensa Libros, S.A.**

Castelló 37  
E-28001 Madrid  
Tel. (91) 431 33 99 (Libros)  
431 32 22 (Suscripciones)  
435 36 37 (Dirección)  
Telex 49370-MPLI-E  
Telefax: (91) 275 39 98

**FRANCE**

**Journal officiel  
Service des publications  
des Communautés européennes**

26, rue Desaix  
75727 Paris Cedex 15  
Tél. (1) 40 58 75 00  
Télécopieur: (1) 4058 7574

**IRELAND**

**Government Publications Sales Office**

Sun Alliance House  
Molesworth Street  
Dublin 2  
Tel. 71 03 09

or by post

**Government Stationery Office**

**EEC Section**

6th floor  
Bishop Street  
Dublin 8  
Tel. 78 16 66

**ITALIA**

**Licosa Spa**

Via Benedetto Fortini, 120/10  
Casella postale 552  
50 125 Firenze  
Tel. 64 54 15  
Telefax: 64 12 57  
Telex 570466 LICOSA I  
CCP 343 509

Subagenti:

**Libreria scientifica Lucio de Biasio - AEIOU**

Via Meravigli, 16  
20 123 Milano  
Tel. 80 76 79

**Herder Editrice e Libreria**

Piazza Montecitorio, 117-120  
00 186 Roma  
Tel. 67 94 628/67 95 304

**Libreria giuridica**

Via 12 Ottobre, 172/R  
16 121 Genova  
Tel. 59 56 93

**GRAND-DUCHÉ DE LUXEMBOURG**

Abonnements seulement  
Subscriptions only  
Nur für Abonnements

**Messageries Paul Kraus**

11, rue Christophe Plantin  
L-2339 Luxembourg  
Tél. 48 21 31  
Télex 2515  
CCP 49242-63

**NEDERLAND**

**SDU uitgeverij**

Christoffel Plantijnstraat 2  
Postbus 20014  
2500 EA 's-Gravenhage  
Tel. (070) 78 98 80 (bestellingen)  
Telefax: (070) 476351

**PORTUGAL**

**Imprensa Nacional**

Casa da Moeda, E.P.  
Rua D. Francisco Manuel de Melo, 5  
1092 Lisboa Codex  
Tel. 69 34 14

**Distribuidora Livros Bertrand Lda.**

**Grupo Bertrand, SARL**  
Rua das Terras dos Vales, 4-A  
Apart. 37  
2700 Amadora Codex  
Tel. 493 90 50 - 494 87 88  
Telex 15798 BERDIS

**UNITED KINGDOM**

**HMSO Books (PC 16)**

HMSO Publications Centre  
51 Nine Elms Lane  
London SW8 5DR  
Tel. (01) 873 9090  
Fax: GP3 873 8463

Sub-agent:

**Alan Armstrong Ltd**

2 Arkwright Road  
Reading, Berks RG2 0SQ  
Tel. (0734) 75 17 71  
Telex 849937 AAALTD G  
Fax: (0734) 755164

**SUISSE**

**OSEC**

Stampfenbachstraße 85  
CH-8035 Zürich  
Tél. (01) 365 51 51  
Fax: (01) 365 52 21

**ÖSTERREICH**

**Manz'sche Verlagsbuchhandlung**

Kohlmarkt 16  
1014 Wien  
Tel. (0222) 531 61-0  
Telex 11 25 00 BOX A  
Telefax: (0222) 531 61-81

**TÜRKIYE**

**Dünya süper veb ofset A.Ş.**

Narlıbahçe Sokak No. 15  
Cağaloğlu  
İstanbul  
Tel. 512 01 90  
Telex: 23822 dsvo-tr.

**UNITED STATES OF AMERICA**

**UNIPUB**

4661-F Assembly Drive  
Lanham, MD 20706-4391  
toll free (800) 274-4888  
Fax: (301) 459-0056  
Télex 7108260418

**CANADA**

**Renouf Publishing Co., Ltd**

61 Sparks Street  
Ottawa  
Ontario K1P 5R1  
Tel. Toll Free 1 (800) 267 4164  
Ottawa Region (613) 238 8985-6  
Telex 053-4936

**JAPAN**

**Kinokuniya Company Ltd**

17-7 Shinjuku 3-Chome  
Shinjuuku-ku  
Tokyo 160-91  
Tel. (03) 354 0131

**Journal Department**

PO Box 55 Chitose  
Tokyo 158  
Tel. (03) 439 0124

**AUTRES PAYS  
OTHER COUNTRIES  
ANDERE LÄNDER**

**Office des publications officielles  
des Communautés européennes**

2, rue Mercier  
L-2985 Luxembourg  
Tél. 49 92 81  
Télex PUBOF LU 1324 b  
CC bancaire BIL 8-109/6003/700

Price (excl. VAT) in Luxembourg: Single copy ECU 4.40 • Subscription ECU 46.50



OFICINA DE PUBLICACIONES OFICIALES DE LAS COMUNIDADES EUROPEAS  
KONTOR ET FOR DE EUROPÆISKE FÆLLESSKABERS OFFICIELLE PUBLIKATIONER  
AMT FÜR AMTLICHE VERÖFFENTLICHUNGEN DER EUROPÄISCHEN GEMEINSCHAFTEN  
ΥΠΗΡΕΣΙΑ ΕΠΙΣΗΜΩΝ ΕΚΔΟΣΕΩΝ ΤΩΝ ΕΥΡΩΠΑΪΚΩΝ ΚΟΙΝΟΤΗΤΩΝ  
OFFICE FOR OFFICIAL PUBLICATIONS OF THE EUROPEAN COMMUNITIES  
OFFICE DES PUBLICATIONS OFFICIELLES DES COMMUNAUTÉS EUROPÉENNES  
UFFICIO DELLE PUBBLICAZIONI UFFICIALI DELLE COMUNITÀ EUROPEE  
BUREAU VOOR OFFICIELE PUBLIKATIES DER EUROPESE GEMEENSCHAPPEN  
SERVIÇO DAS PUBLICAÇÕES OFICIAIS DAS COMUNIDADES EUROPEIAS

ISSN 1010-2779

L - 2985 Luxembourg

Catalogue number: CA-CB-89-010-EN-C