

# Consumer price index

10 □ 1990 Monthly

***PRICES: Another marked increase in September (+0.7% compared with August)  
Inflation over 12 months for the EC at 6.1%.***

Important increases in most of the member states led to a rise of 0.7% between August and September.

The largest rise was recorded in Greece, (3.5%); this sharp rise was due to increased prices after the summer sales for clothing and footwear, durable goods and leisure goods (all + 6.0%).

As a result of the surge in oil prices the CPI's for all the other EC countries went up sharply: Spain and Portugal 1.1%, Belgium and United Kingdom 0.9%, Netherlands and Denmark 0.8%, Italy and Luxemburg 0.6%, France 0.5% and Germany (FR) 0.4%.

The quarterly index for Ireland rose by 0.9% between mid-May and mid-August 1990, which corresponds to monthly average increase of about 0.3%.

Since the beginning of this year the CPI for the EC as a whole climbed by 4.8% (September '90 compared with December '89) against 3.9% during the corresponding period of last year (September '89 compared with December '88).

For the different EC-countries the inflation rate for the first 9 months of 1990 and 1989 were as follows:

	9 months			9 months	
	1990	1989		1990	1989
Denmark	2.0%	3.7%	Belgium	3.3%	3.2%
Ireland	2.1%	3.9%	Italy	5.0%	4.4%
Germany (FR)	2.2%	2.2%	Spain	5.4%	5.8%
Netherlands	2.5%	1.2%	United Kingdom	8.8%	5.7%
Luxemburg	2.8%	3.1%	Portugal	10.8%	8.7%
France	3.0%	2.8%	Greece	16.2%	9.5%

The inflation rate over 12 months (September 1990 compared with September 1989) is 6.1%; this is the highest level since July 1985. The rates for the individual countries are given at the bottom of the tables I and II, pages 4 and 5.

The corresponding rates for the USA and Japan are 6.2% respectively 2.9%.

## ***GENERAL INDEX EXCLUDING TOBACCO***

In the framework of the Commission's program "Europe against cancer" Eurostat regularly calculates and publishes an index excluding tobacco products. The aim of this index is to make clear to the public and the social partners the effects of adjustments in taxation on tobacco products which are foreseen in the program "Europe against cancer". See pages 8 and 9 in this bulletin.



OFICINA ESTADÍSTICA DE LAS COMUNIDADES EUROPEAS  
DE EUROPÆISKE FÆLLESSKABERS STATISTISKE KONTOR  
STATISTISCHES AMT DER EUROPÄISCHEN GEMEINSCHAFTEN  
ΣΤΑΤΙΣΤΙΚΗ ΥΠΗΡΕΣΙΑ ΤΩΝ ΕΥΡΩΠΑΪΚΩΝ ΚΟΙΝΟΤΗΤΩΝ  
STATISTICAL OFFICE OF THE EUROPEAN COMMUNITIES  
OFFICE STATISTIQUE DES COMMUNAUTÉS EUROPÉENNES  
ISTITUTO STATISTICO DELLE COMUNITÀ EUROPEE  
BUREAU VOOR DE STATISTIEK DER EUROPESE GEMEENSCHAPPEN  
SERVIÇO DE ESTATÍSTICA DAS COMUNIDADES EUROPEIAS

L-2920 Luxembourg – Tél. 43011 – Télex : Comeur Lu 3423  
B-1049 Bruxelles, bâtiment Berlaymont, rue de la Loi 200 (bureau de liaison) – Tél. 235 1111

The information included in this bulletin has been taken from the Cronos data bank, which is accessible via the different host companies. For all information about these host companies contact Eurostat in Luxembourg, tel. 4301-4567.

To obtain specifications of the principal characteristics of the series contained in this bulletin contact Luxembourg:

**Mr Nijenhuis, tel. 4301-3202**

**Mr Desantis, tel. 4301-3511**

VERBRAUCHERPREISE

CONSUMER PRICES

PRIX A LA CONSOMMATION

GESAMTINDEX

GENERAL INDEX

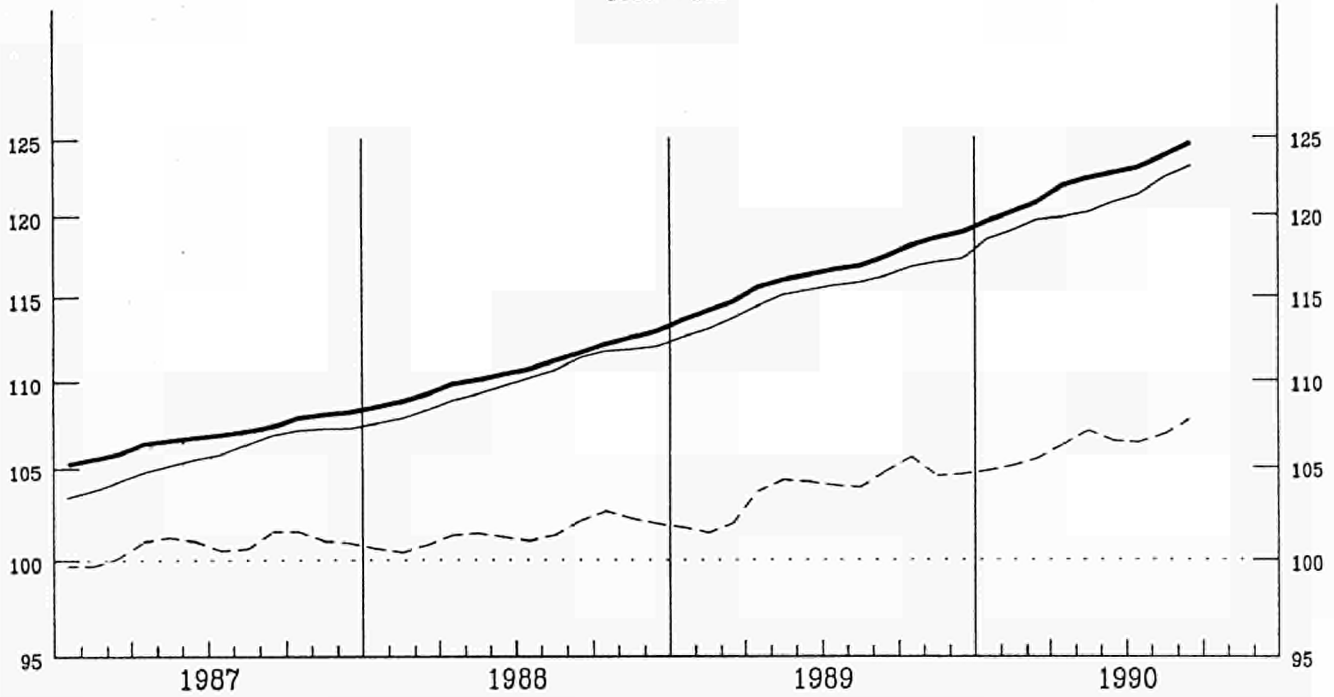
INDICE GENERAL

— USA

— EUR 12

- - - JAPAN

1985 = 100



EINFACH-LOGARITHMISCHE SKALA

SEMI-LOGARITHMIC SCALE

ECHELLE SEMI-LOGARITHMIQUE

VERÄNDERUNG % T/T-12

VARIATION % T/T-12

VARIATION % T/T-12

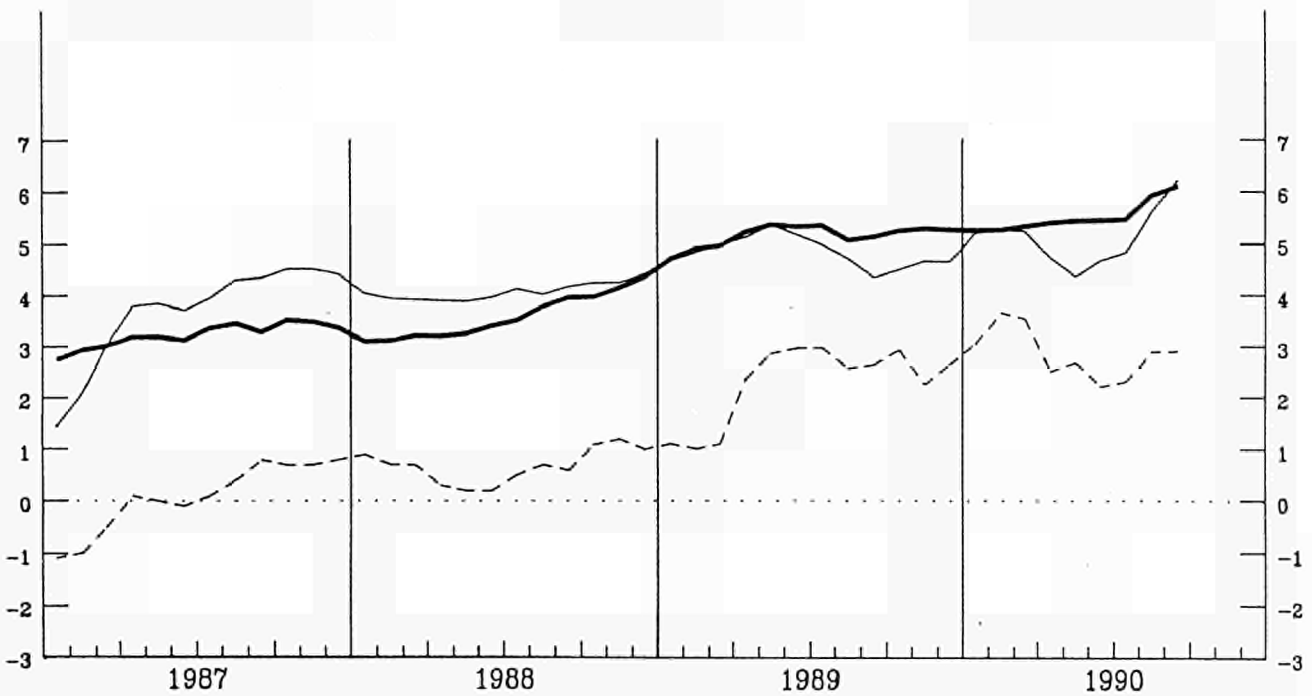


TABLE I

## CONSUMER PRICES

## GENERAL INDEX

	EUR 12	B	DK	D	GR	E	F	IRL	I	L	NL	P	UK	
	Price indices							1985=100						
<b>Annual average</b>														
1986	103.5	101.3	103.6	99.9	123.0	108.8	102.7	103.8	105.8	100.3	100.2	111.7	103.4	
1987	106.9	102.9	107.8	100.1	143.2	114.5	105.9	107.1	110.9	100.2	99.8	122.2	107.7	
1988	110.7	104.1	112.7	101.4	162.5	120.0	108.7	109.4	116.5	101.7	100.6	133.9	113.0	
1989	116.4	107.3	118.1	104.2	184.9	128.2	112.5	113.9	123.8	105.1	101.7	150.8	121.8	
<b>1989</b>														
September	117.4	108.4	119.0	104.3	190.7	130.7	113.2	:	124.8	105.8	102.5	153.9	123.3	
October	118.1	108.5	119.7	104.7	194.6	131.2	113.7	:	125.8	106.4	102.6	154.7	124.2	
November	118.5	108.4	120.2	104.9	196.3	131.5	114.0	115.6	126.5	106.6	102.6	156.3	125.3	
December	118.9	108.8	120.2	105.2	199.9	132.0	114.1	:	127.0	106.7	102.6	158.0	125.6	
<b>1990</b>														
January	119.6	109.2	119.5	105.8	201.3	133.2	114.4	:	128.2	107.5	102.4	160.7	126.3	
February	120.2	109.4	119.7	106.2	201.4	134.0	114.6	116.7	129.2	107.6	102.8	164.4	127.1	
March	120.8	109.7	120.2	106.3	209.0	134.5	115.0	:	129.7	107.6	103.2	165.4	128.3	
April	121.8	110.2	120.2	106.5	212.6	134.9	115.4	:	130.2	108.1	103.7	167.4	132.2	
May	122.3	110.2	121.1	106.7	218.9	134.9	115.7	117.1	130.6	108.3	103.8	169.2	133.4	
June	122.7	110.3	120.8	106.8	223.8	135.3	115.9	:	131.2	108.3	103.7	169.8	133.9	
July	123.0	110.7	120.4	106.8	223.2	137.0	116.2	:	131.6	108.5	104.0	171.0	134.0	
August	123.8	111.3	121.7	107.1	224.5	137.7	116.9	118.0	132.5	109.0	104.4	173.1	135.4	
September	124.6P	112.4	122.6P	107.5	232.3	139.2	117.5P	:	133.3P	109.7	105.2	175.1	136.7	
	Rates of increase over one month (IRL 3 months)							(T/T-1)						
<b>1989</b>														
Sept./August	0.5	0.5	0.3	0.1	3.6	1.1	0.2	:	0.5	0.3	0.5	0.2	0.7	
Oct./Setp.	0.6	0.1	0.6	0.4	2.0	0.4	0.4	:	0.8	0.6	0.1	0.5	0.8	
Nov./Oct.	0.4	-0.1	0.5	0.2	0.9	0.2	0.2	0.7	0.6	0.2	0.0	1.0	0.9	
Dec./Nov.	0.3	0.4	0.0	0.3	1.8	0.4	0.1	:	0.4	0.1	0.0	1.1	0.3	
<b>1990</b>														
Jan/Dec	0.6	0.4	-0.6	0.6	0.7	0.9	0.3	:	0.9	0.8	-0.2	1.7	0.6	
Feb./Jan.	0.5	0.2	0.2	0.4	0.1	0.6	0.2	1.0	0.8	0.1	0.4	2.3	0.6	
March/Feb.	0.5	0.2	0.3	0.1	3.8	0.4	0.3	:	0.4	0.0	0.4	0.6	1.0	
April/March	0.9	0.5	0.1	0.2	1.7	0.2	0.4	:	0.4	0.4	0.5	1.2	3.0	
May/April	0.4	0.0	0.7	0.2	3.0	0.0	0.2	0.3	0.3	0.2	0.1	1.1	0.9	
June/May	0.3	0.1	-0.2	0.1	2.2	0.3	0.2	:	0.5	0.0	-0.1	0.3	0.4	
July/June	0.3	0.4	-0.3	0.0	-0.2	1.3	0.3	:	0.3	0.2	0.3	0.7	0.1	
August/July	0.6	0.6	1.0	0.3	0.6	0.5	0.6	0.9	0.7	0.5	0.4	1.3	1.0	
Sept./August	0.7P	0.9	0.8P	0.4	3.5	1.1	0.5P	:	0.6P	0.6	0.8	1.1	0.9	
	Rates of increase over 12 months							(T/T-12)						
<b>1989/88</b>														
September	5.1	3.5	4.7	2.8	14.3	6.8	3.4	:	6.3	3.6	1.3	12.7	7.6	
October	5.2	3.6	5.1	3.2	13.8	7.1	3.6	:	6.3	3.9	1.3	12.3	7.3	
November	5.3	3.6	4.8	3.0	14.0	7.4	3.7	4.6	6.1	3.8	1.2	11.7	7.7	
December	5.3	3.6	4.8	3.0	14.8	6.9	3.6	:	6.3	3.9	1.3	11.6	7.7	
<b>1990/89</b>														
January	5.2	3.6	3.7	2.7	15.9	6.8	3.4	:	6.6	4.0	2.0	12.1	7.7	
February	5.3	3.4	3.2	2.7	16.5	7.3	3.4	4.2	6.5	3.8	2.1	13.1	7.5	
March	5.3	3.4	3.0	2.7	17.8	7.0	3.4	:	6.3	3.5	2.1	12.8	8.1	
April	5.4	3.2	2.4	2.3	17.9	7.0	3.2	:	6.2	3.6	2.1	12.9	9.4	
May	5.4	3.1	2.4	2.3	21.0	6.8	3.0	3.5	6.0	3.4	2.2	14.0	9.7	
June	5.4	3.0	2.5	2.3	21.7	6.6	3.0	:	6.1	3.1	2.2	13.6	9.8	
July	5.5	3.0	2.1	2.4	21.6	6.2	3.0	:	6.2	3.0	2.3	13.3	9.8	
August	5.9	3.3	2.6	2.8	21.9	6.5	3.5	2.9	6.7	3.3	2.4	12.7	10.6	
September	6.1P	3.7	3.0P	3.0	21.8	6.5	3.8P	:	6.8P	3.7	2.6	13.7	10.9	

TABLE II

## CONSUMER PRICES

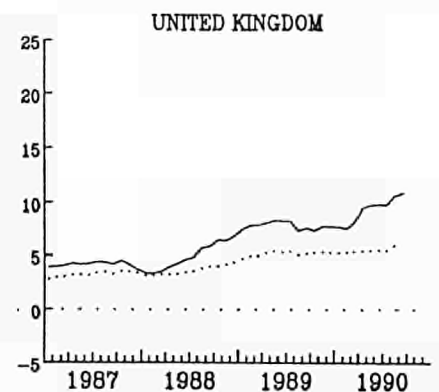
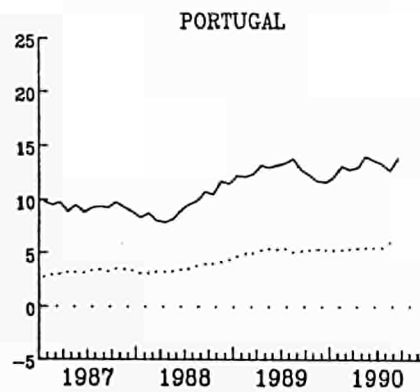
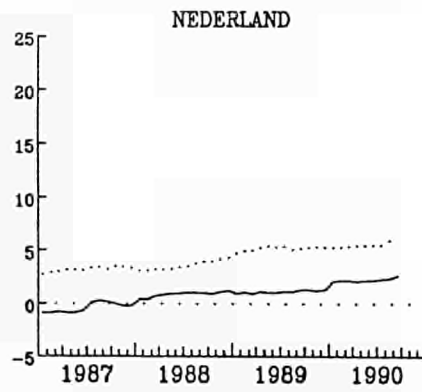
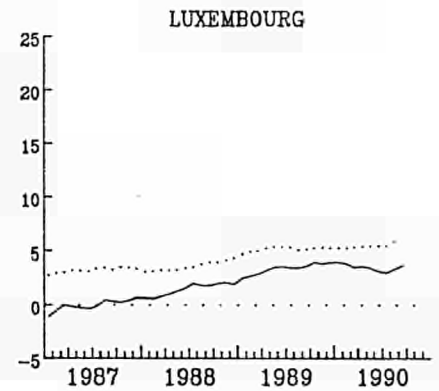
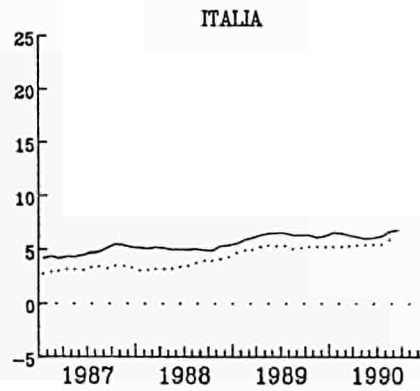
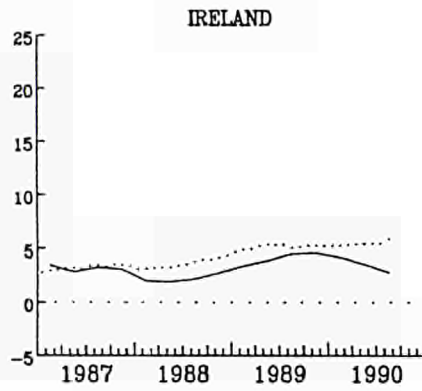
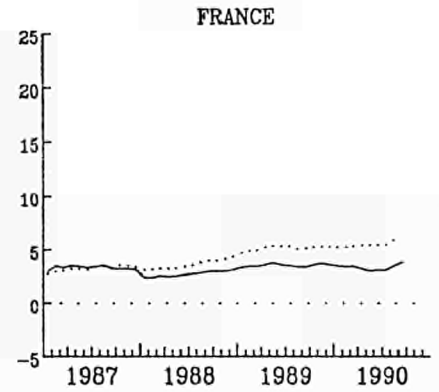
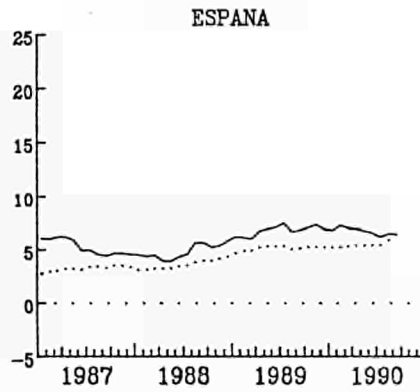
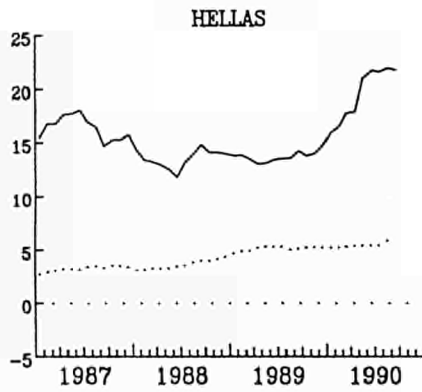
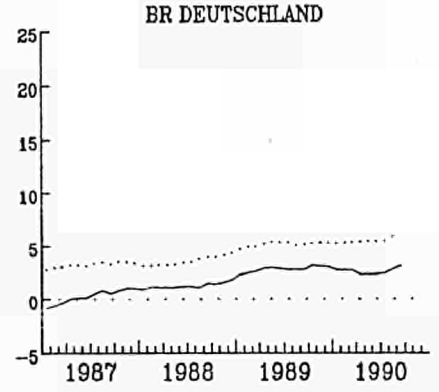
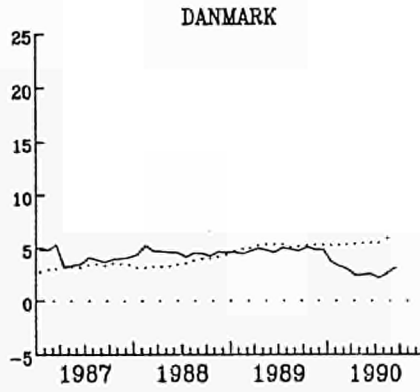
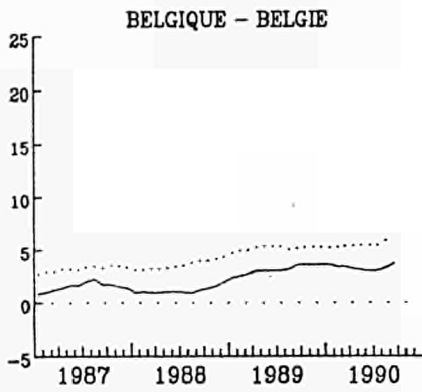
## GENERAL INDEX

	U.S.A	Japan	Switzerland	Austria	Norway	Sweden	Finland	Canada
	Price indices				1985=100			
Annual average								
1986	101.9	100.6	100.8	101.7	107.2	104.2	103.6	104.1
1987	105.7	100.7	102.2	103.1	116.5	108.6	107.1	108.7
1988	110.0	101.4	104.2	105.1	124.3	114.9	112.6	113.1
1989	115.3	103.7	107.4	107.8	130.0	122.3	120.0	118.7
<b>1989</b>								
September	116.2	104.8	107.8	108.5	131.4	123.7	121.9	120.0
October	116.8	105.6	108.1	108.5	131.6	124.7	122.4	120.4
November	117.1	104.5	109.4	108.1	131.6	125.0	122.3	120.8
December	117.3	104.6	110.2	108.5	131.5	125.4	123.0	120.7
<b>1990</b>								
January	118.5	104.8	110.8	109.2	132.5	129.4	124.8	121.8
February	119.0	105.1	111.2	110.0	133.0	130.0	125.3	122.5
March	119.7	105.5	111.6	110.1	134.5	133.6	125.7	122.9
April	119.9	106.3	111.8	110.4	134.5	133.5	126.4	123.0
May	120.1	107.1	112.3	110.5	134.8	134.2	127.0	123.6
June	120.8	106.5	112.5	110.8	135.2	134.1	127.3	124.1
July	121.3	106.4	112.6	112.2	135.4	135.4	127.5	124.7
August	122.4	106.9	113.8	112.8	135.2	136.3	128.1	124.8
September	123.4	107.8P	114.4	112.6	136.5	137.9	128.8	125.2
	Rates of increase over one month (IRL 3 months)				(T/T-1)			
<b>1989</b>								
Sept./August	0.3	0.9	0.4	-0.7	0.9	0.8	1.1	0.1
Oct./Sept.	0.5	0.8	0.3	0.0	0.1	0.8	0.4	0.4
Nov./Oct.	0.2	-1.0	1.2	-0.4	0.0	0.2	-0.1	0.3
Dec./Nov.	0.2	0.1	0.7	0.4	-0.1	0.3	0.6	-0.1
<b>1990</b>								
Jan/Dec	1.0	0.2	0.6	0.7	0.8	3.2	1.5	0.8
Feb./Jan.	0.5	0.3	0.3	0.7	0.4	0.5	0.4	0.6
March/Feb.	0.5	0.4	0.3	0.1	1.1	2.8	0.3	0.3
April/March	0.2	0.8	0.3	0.3	0.0	-0.1	0.6	0.1
May/April	0.2	0.8	0.4	0.1	0.2	0.6	0.5	0.5
June/May	0.5	-0.6	0.2	0.2	0.3	-0.1	0.2	0.4
July/June	0.4	-0.1	0.1	1.3	0.1	1.0	0.2	0.5
August/July	0.9	0.5	1.1	0.5	-0.1	0.7	0.5	0.1
Sept./August	0.8	0.8P	0.5	-0.2	1.0	1.1	0.5	0.3
	Rates of increase over 12 months				(T/T-12)			
<b>1989/88</b>								
September	4.3	2.6	3.4	2.5	4.2	6.4	6.7	5.2
October	4.5	2.9	3.7	2.8	4.2	6.4	7.1	5.1
November	4.7	2.3	4.5	2.5	4.3	6.5	6.8	5.2
December	4.6	2.6	5.0	2.9	4.2	6.6	6.6	5.1
<b>1990/89</b>								
January	5.2	3.0	5.0	2.9	4.2	8.7	7.6	5.5
February	5.3	3.6	4.9	3.1	4.3	8.6	7.5	5.4
March	5.2	3.5	5.0	3.1	4.5	11.2	6.6	5.3
April	4.7	2.5	4.7	3.1	4.0	10.0	6.1	5.0
May	4.4	2.7	5.0	3.0	3.9	10.2	6.3	4.5
June	4.7	2.2	5.0	2.9	3.6	9.7	5.6	4.3
July	4.8	2.3	5.3	3.0	3.6	10.8	5.8	4.1
August	5.6	2.9	6.1	3.2	3.8	11.1	6.2	4.2
September	6.2	2.9P	6.1	3.7	3.9	11.5	5.6	4.3

VERBRAUCHERPREISE  
GESAMTINDEX  
VEARENDERUNG % T/T-12

CONSUMER PRICES  
GENERAL INDEX  
VARIATION % T/T-12

PRIX A LA CONSOMMATION  
INDICE GENERAL  
VARIATION % T/T-12



..... EUR 12

## *EXPLANATORY NOTES*

### METHODOLOGY

The consumer price indices given here are the national indices which have different names in each country. As far as trends are concerned, the general index published by EUROSTAT always corresponds to the general index published by the country. The component items of this general index are groups of national indices aggregated according to a harmonized classification conforming to the ESA (European System of Integrated Economic Accounts). For these groups, the price trends correspond to the trends noted by the national indices for the same classification field. The field covered by the general index varies according to country: as regards the population concerned (specific income bracket, certain socio-professional categories or total households), the geographical areas used (capital, urban areas, country as a whole, etc.) or differences in treatments of expenditure on rent, health care, etc... Finally, there is no uniform method for seasonal adjustments. A fixed base system is used in some countries, whereas in others a chain system is used (variable weightings). The reference years used at national level for the indices vary according to country. For ease of comparison, EUROSTAT has chosen 1985 as the common year for the presentation of these indices.

### THE CALCULATION OF THE EUR-12 INDEX

The Eur-12 index as calculated by EUROSTAT is a weighted average of national price indices. The weight used is the proportion of each country in the final consumption of households for EUR-12. The values of this consumption in national currency are converted into purchasing power standard (PPS); for this purpose the purchasing power parities of the G.D.P. are used. Up to 1987 purchasing power parities are those which result from the 1980 enquiry, from 1988 onwards they are those from the 1985 enquiry. The index calculated is a chain index of the "Laspeyres" type with weights changing each year. However, the weights are lagged by three years since the national accounts data needed become available only after three years. For example: the weights used for 1989 are those of 1986, for 1988 those of 1985. Moreover, national accounts data are often revised leading to revisions of the consumption weights. In order to avoid continuous modifications in the EUR-12 index for previous periods, EUROSTAT has decided to "freeze" the weights which are used. Thus the EUR-12 index will not be affected by revisions of the national accounts. However when Member States carry out major revisions in the price series for past years, EUR-12 data will be calculated using these new series.

TABLE III

## CONSUMER PRICES

## GENERAL INDEX EXCLUDING TOBACCO PRODUCTS

	EUR 12	B	DK	D	GR	E	F	IRL	I	L	NL	P	UK
	<b>General index excluding tobacco products</b>												
	<b>1985=100</b>												
<b>Annual average</b>													
1986	103.4	101.2	103.5	99.7	123.2	108.7	102.4	103.5	105.8	100.2	100.0	111.7	103.1
1987	106.7	102.7	107.8	100.0	143.4	114.4	105.7	106.7	110.7	100.1	99.2	122.0	107.5
1988	110.5	103.9	112.7	101.2	161.9	120.0	108.4	108.9	116.3	101.5	100.1	133.8	112.8
1989	116.2	107.1	118.3	104.1	184.0	128.2	112.2	113.4	123.5	104.9	101.3	150.7	121.8
<b>1989</b>													
August	116.9	107.7	118.8	104.1	183.3	129.3	112.7	114.4	124.0	105.3	101.6	153.3	122.5
September	117.3	108.2	119.2	104.2	190.1	130.7	113.0	:	124.6	105.6	102.2	153.9	123.3
October	117.9	108.3	119.9	104.5	194.0	131.3	113.5	:	125.6	106.2	102.3	154.6	124.2
November	118.4	108.1	120.4	104.7	195.8	131.5	113.7	115.2	126.3	106.4	102.3	156.2	125.4
December	118.7	108.5	120.4	105.1	199.2	132.0	113.8	:	126.8	106.5	102.3	158.0	125.4
<b>1990</b>													
January	119.5	108.9	119.7	105.7	199.8	133.2	114.1	:	128.1	107.3	101.9	160.7	126.4
February	120.0	109.2	119.9	106.0	199.9	134.0	114.4	116.3	128.8	107.4	102.3	164.5	127.2
March	120.6	109.4	120.3	106.1	207.7	134.5	114.7	:	129.3	107.4	102.8	165.5	128.5
April	121.6	109.9	120.4	106.3	211.4	134.9	115.2	:	129.8	107.8	103.3	167.5	132.4
May	122.1	110.0	121.3	106.5	217.4	134.9	115.4	116.7	130.3	108.1	103.3	169.2	133.5
June	122.5	110.2	121.0	106.6	222.3	135.3	115.7	:	130.9	108.0	103.2	169.8	134.0
July	122.8	110.4	120.6	106.6	221.8	137.0	115.9	:	131.3	108.2	103.5	170.7	134.2
August	123.5	111.1	121.8	106.9	223.1	137.7	116.3	117.7	132.2	108.7	104.0	172.8	135.5
	<b>Rates of increase over one month (IRL 3 months)</b>												
	<b>(T/T-1)</b>												
<b>1989</b>													
August/July	0.2	0.3	0.6	-0.1	0.3	0.2	0.1	1.6	0.2	0.1	0.3	1.8	0.2
Sept./August	0.5	0.5	0.4	0.1	3.7	1.1	0.3	:	0.5	0.3	0.6	0.2	0.7
Oct./Sept.	0.6	0.1	0.6	0.3	2.1	0.4	0.4	:	0.8	0.6	0.1	0.5	0.7
Nov./Oct.	0.4	-0.1	0.5	0.2	0.9	0.2	0.2	0.7	0.6	0.2	0.0	1.0	1.0
Dec./Nov.	0.3	0.3	0.0	0.4	1.8	0.4	0.1	:	0.4	0.1	0.0	1.1	0.0
<b>1990</b>													
Jan/Dec	0.6	0.4	-0.6	0.6	0.3	0.9	0.3	:	1.0	0.8	-0.4	1.7	0.8
Feb./Jan.	0.5	0.2	0.2	0.3	0.1	0.6	0.2	1.0	0.5	0.1	0.4	2.3	0.6
March/Feb.	0.5	0.2	0.4	0.1	3.9	0.4	0.3	:	0.4	0.0	0.4	0.6	1.0
April/March	0.9	0.5	0.1	0.2	1.8	0.3	0.4	:	0.4	0.4	0.5	1.2	3.0
May/April	0.4	0.0	0.8	0.2	2.8	0.0	0.2	0.3	0.3	0.2	0.0	1.1	0.8
June/May	0.3	0.2	-0.2	0.1	2.3	0.3	0.2	:	0.5	0.0	-0.1	0.3	0.4
July/June	0.3	0.2	-0.4	0.0	-0.2	1.3	0.2	:	0.3	0.2	0.3	0.5	0.1
August/July	0.6	0.6	1.1	0.3	0.6	0.5	0.3	0.9	0.7	0.5	0.4	1.3	1.0
	<b>Rates of increase over 12 months</b>												
	<b>(T/T-12)</b>												
<b>1989/88</b>													
August	5.1	3.1	5.0	2.8	13.7	6.7	3.4	4.6	6.3	3.4	1.2	13.7	7.6
September	5.2	3.5	4.8	2.8	14.4	6.9	3.4	:	6.3	3.6	1.4	12.7	7.7
October	5.2	3.6	5.2	3.0	13.9	7.1	3.6	:	6.4	3.9	1.4	12.2	7.4
November	5.4	3.5	4.9	3.1	14.1	7.4	3.7	4.7	6.5	3.8	1.3	11.7	7.9
December	3.5	3.5	4.9	3.2	14.8	6.9	3.6	:	5.9	4.0	1.5	11.6	7.6
<b>1990/89</b>													
January	5.3	3.4	3.8	2.7	15.6	6.8	3.5	:	6.7	4.0	2.1	12.0	7.8
February	5.3	3.3	3.3	2.6	16.4	7.3	3.4	4.4	6.4	3.8	2.2	13.1	7.7
March	5.4	3.3	3.0	2.6	18.3	7.0	3.4	:	6.2	3.5	2.2	12.8	8.3
April	5.4	3.1	2.4	2.2	17.8	6.9	3.2	:	6.1	3.6	2.1	13.1	9.6
May	5.4	3.0	2.4	2.2	20.7	6.8	3.0	3.6	6.0	3.4	2.1	14.1	9.8
June	5.4	3.0	2.5	2.2	21.5	6.6	3.1	:	6.1	3.1	2.1	13.7	9.7
July	5.4	2.9	2.1	2.3	21.4	6.2	3.0	:	6.1	3.0	2.2	13.2	9.8
August	5.8	3.2	2.6	2.7	21.7	6.5	3.2	2.9	6.6	3.3	2.3	12.6	10.6



TABLE IV

## CONSUMER PRICES

## TOBACCO PRODUCTS

	EUR 12	B	DK	D	GR	E	F	IRL	I	L	NL	P	UK	
	Tobacco products							1985=100						
<b>Annual average</b>														
1986	107.0	108.0	107.3	103.2	118.6	112.0	106.5	110.0	105.9	107.8	101.3	118.5	109.9	
1987	111.8	113.3	109.6	103.1	137.6	120.6	111.9	116.4	116.7	110.0	104.3	133.6	113.3	
1988	117.7	114.3	112.3	104.3	198.1	124.2	122.4	119.9	125.8	115.1	104.4	140.5	117.0	
1989	123.3	121.4	112.8	109.5	234.1	127.8	127.6	123.4	134.1	120.1	104.9	157.0	120.4	
<b>1989</b>														
August	123.3	120.2	113.0	109.7	230.0	127.8	128.7	123.1	134.1	120.1	104.9	162.5	119.7	
September	123.7	122.9	113.0	110.2	230.0	127.8	128.7	:	134.1	120.1	104.9	162.5	120.5	
October	124.1	123.5	113.7	110.2	230.0	127.8	128.7	:	134.1	120.1	104.9	162.5	122.0	
November	124.3	125.1	113.7	110.2	230.0	127.8	128.7	124.4	134.1	120.1	104.9	162.5	122.4	
December	124.7	129.5	113.7	110.3	238.6	127.8	128.7	:	134.1	120.1	104.9	162.5	122.4	
<b>1990</b>														
January	126.4	130.8	113.7	110.3	281.5	137.3	128.7	:	134.1	120.1	106.0	162.5	122.6	
February	129.1	131.0	115.2	114.9	281.5	137.3	128.7	125.0	144.3	124.2	106.1	162.5	122.7	
March	129.1	131.0	115.2	115.0	281.5	137.3	128.7	:	144.3	124.2	106.1	162.5	122.8	
April	130.3	131.0	115.2	115.0	281.5	137.3	128.7	:	144.3	124.2	106.1	162.5	127.2	
May	131.5	131.1	115.2	115.0	302.0	137.3	128.7	122.3	144.3	124.2	107.4	169.5	130.0	
June	131.6	131.1	115.2	115.0	302.0	137.3	128.7	:	144.3	124.2	107.4	169.5	130.2	
July	132.0	131.1	116.6	115.0	302.0	137.3	128.7	:	144.3	124.2	107.4	196.1	130.2	
August	132.0	131.1	116.6	115.0	302.0	137.3	128.7	122.5	144.3	124.2	107.4	196.1	130.3	
	Rates of increase over one month (IRL 3 months)							(T/T-1)						
<b>1989</b>														
August/July	0.2	-0.3	0.6	0.3	0.0	0.0	0.8	0.0	0.0	0.0	0.0	0.0	-0.1	
Sept./August	0.3	2.2	0.0	0.5	0.0	0.0	0.0	:	0.0	0.0	0.0	0.0	0.7	
Oct./Sept.	0.4	0.5	0.6	0.0	0.0	0.0	0.0	:	0.0	0.0	0.0	0.0	1.2	
Nov./Oct.	0.1	1.3	0.0	0.0	0.0	0.0	0.0	1.1	0.0	0.0	0.0	0.0	0.3	
Dec./Nov.	0.3	3.6	0.0	0.1	3.7	0.0	0.0	:	0.0	0.0	0.0	0.0	0.0	
<b>1990</b>														
Jan/Dec	1.4	0.9	0.0	0.0	18.0	7.4	0.0	:	0.0	0.0	1.0	0.0	0.2	
Feb./Jan.	2.1	0.2	1.2	4.2	0.0	0.0	0.0	0.5	7.6	3.4	0.1	0.0	0.1	
March/Feb.	0.0	0.0	0.0	0.1	0.0	0.0	0.0	:	0.0	0.0	0.0	0.0	0.1	
April/March	0.9	0.0	0.0	0.0	0.0	0.0	0.0	:	0.0	0.0	0.7	0.0	3.6	
May/April	0.9	0.0	0.0	0.0	7.3	0.0	0.0	-1.5	0.0	0.0	0.6	0.2	2.2	
June/May	0.0	0.0	0.0	0.0	0.0	0.0	0.0	:	0.0	0.0	0.0	0.0	0.2	
July/June	0.3	0.0	1.2	0.0	0.0	0.0	0.0	:	0.0	0.0	0.0	15.7	0.0	
August/July	0.0	0.0	0.0	0.0	0.0	0.0	0.0	0.2	0.0	0.0	0.0	0.0	0.1	
	Rates of increase over 12 months							(T/T-12)						
<b>1989/88</b>														
August	4.2	5.2	0.6	5.7	9.6	2.7	1.6	2.7	8.1	3.5	0.6	15.7	2.0	
September	4.5	7.5	0.6	6.2	9.6	2.7	1.6	:	8.1	3.5	0.6	15.7	2.6	
October	4.8	8.0	1.3	6.2	9.6	2.7	1.6	:	8.1	3.5	0.6	15.7	3.4	
November	2.4	9.3	1.3	1.1	9.6	2.7	1.6	3.7	0.0	3.5	0.1	15.7	2.9	
December	2.6	13.2	1.3	1.2	13.7	2.7	1.6	:	0.0	0.0	0.1	15.7	2.7	
<b>1990/89</b>														
January	3.6	13.7	1.3	1.3	28.7	7.5	1.6	:	0.0	0.0	1.0	15.6	2.5	
February	5.4	10.3	2.5	5.5	22.4	7.5	1.6	1.5	7.6	3.4	1.1	15.6	2.5	
March	4.3	9.3	2.5	5.6	22.4	7.4	1.6	:	7.6	3.4	1.1	15.6	2.5	
April	6.1	9.0	2.5	5.6	22.4	7.4	1.6	:	7.6	3.4	1.8	0.0	6.2	
May	7.1	8.9	2.5	5.6	31.3	7.4	1.6	-0.6	7.6	3.4	2.4	4.3	8.5	
June	7.0	8.8	2.5	5.3	31.3	7.4	1.6	:	7.6	3.4	2.4	4.3	8.6	
July	7.2	8.7	3.8	5.1	31.3	7.4	0.8	:	7.6	3.4	2.4	20.7	8.7	
August	7.1	9.0	3.1	4.8	31.3	7.4	0.0	-0.5	7.6	3.4	2.4	20.7	8.9	

## Sources

<b>DEUTSCHLAND</b>	Preise und Preisindizes für die Lebenshaltung <b>STATISTISCHES BUNDESAMT - WIESBADEN/DEUTSCHLAND</b>
<b>FRANCE</b>	Indices des prix à la consommation Bulletin mensuel de statistiques <b>INSEE - PARIS/FRANCE</b>
<b>ITALIA</b>	Indici dei prezzi al consumo <b>ISTAT - ROMA/ITALIA</b>
<b>NEDERLAND</b>	Maandstatistiek van de prijzen <b>C.B.S. - VOORBURG/NEDERLAND</b>
<b>BELGIQUE</b>	Index van de consumptie prijzen Dienst voor het indexcijfer <b>MINISTERIE VAN ECONOMISCHE ZAKEN - BRUSSEL/BELGIE</b>
<b>LUXEMBOURG</b>	Indice des prix à la consommation INDICATEURS RAPIDES <b>STATEC - LUXEMBOURG</b>
<b>UNITED KINGDOM</b>	Retail price index <b>DEPARTEMENT OF EMPLOYMENT - LONDON - UK</b>
<b>IRELAND</b>	Consumer Price Index <b>CENTRAL STATISTICAL OFFICE - DUBLIN/IRELAND</b>
<b>DANMARK</b>	Forbrugerprisindexet Prisstistik <b>DANMARKS STATISTIK - KOBENHAVN/DANMARK</b>
<b>ESPANA</b>	Indice de precios de consumo <b>INSTITUTO NACIONAL DE ESTADISTICA - MADRID - ESPAÑA</b>
<b>PORTUGAL</b>	Indice de precios no consumidor <b>INSTITUTO NACIONAL DE ESTADISTICA - LISBOA - PORTUGAL</b>
<b>GREECE</b>	Consumer price index <b>NATIONAL STATISTICAL OFFICE OF GREECE - ATHENS - GREECE</b>
<b>SCHWEIZ</b>	Landesindex der Konsumentenpreise <b>BUNDESAMT FUER GEWERBE,INDUSTRIE UND ARBEIT - BERN - SCHWEIZ</b>
<b>OESTERREICH</b>	Index der Verbraucherpreise <b>OESTERREICHISCHES STATISTISCHES ZENTRALAMT -WIEN OESTERREICH</b>
<b>NORWAY</b>	Konsumprisindexen STATISTIK MANEDSHEFTE <b>STATISTIK SENTRALBYRA - OSLO - NORGE</b>
<b>SWEDEN</b>	Konsumpriserna: STATISTISKA MEDELLAN <b>STATISTISKA CENTRALBYRAN - STOCKHOLM/SVERIGE</b>
<b>FINLAND</b>	Consumer price index - MONTHLY BULLETIN <b>CENTRAL STATISTICAL OFFICE OF FINLAND - HELSINKI/FINLAND</b>
<b>U.S.A.</b>	Consumer price index - CPI-U U.S. City - Average for all urban consumers <b>U.S. BUREAU OF LABOR - WASHINGTON - U.S.A.</b>
<b>CANADA</b>	The consumer price index <b>STATISTICS CANADA - OTTAWA/CANADA</b>
<b>JAPAN</b>	Consumer price index <b>STATISTICS BUREAU MANAGEMENT AND COORDINATION AGENCY - TOKYO/JAPAN</b>

**Venta y suscripciones • Salg og abonnement • Verkauf und Abonnement • Πωλήσεις και συνδρομές  
Sales and subscriptions • Vente et abonnements • Vendita e abbonamenti  
Verkoop en abonnementen • Venda e assinaturas**

**BELGIQUE / BELGIË**

**Moniteur belge / Belgisch Staatsblad**

Rue de Louvain 42 / Louvenseweg 42  
1000 Bruxelles / 1000 Brussel  
Tél. (02) 512 00 26  
Fax 511 01 84  
CCP / Postrekening 000-2005502-27

Autres distributeurs / Overige verkooppunten

**Librairie européenne /  
Europese Boekhandel**

Avenue Albert Jonnart 50 /  
Albert Jonnartlaan 50  
1200 Bruxelles / 1200 Brussel  
Tél. (02) 734 02 81  
Fax 735 08 60

**Jean De Lannoy**

Avenue du Roi 202 / Koningslaan 202  
1060 Bruxelles / 1060 Brussel  
Tél. (02) 538 51 69  
Télex 63220 UNBOOK B

**CREDOC**

Rue de la Montagne 34 / Bergstraat 34  
Bte 11 / Bus 11  
1000 Bruxelles / 1000 Brussel

**DANMARK**

**J. H. Schultz Information A/S**

**EF-Publikationer**

Ottiliavej 18  
2500 Valby  
Tlf. 36 44 22 66  
Fax 36 44 01 41  
Girokonto 6 00 08 86

**BR DEUTSCHLAND**

**Bundesanzeiger Verlag**

Breite Straße  
Postfach 10 80 06  
5000 Köln 1  
Tel. (0221) 20 29-0  
Fernschreiber:  
ANZEIGER BONN 8 882 595  
Fax 20 29 278

**GREECE**

**G.C. Eleftheroudakis SA**

International Bookstore  
Nikis Street 4  
10563 Athens  
Tel. (01) 322 63 23  
Telex 219410 ELEF  
Fax 323 98 21

**ESPAÑA**

**Boletín Oficial del Estado**

Trafalgar, 27  
28010 Madrid  
Tel. (91) 446 60 00

**Mundi-Prensa Libros, S.A.**

Castelló, 37  
28001 Madrid  
Tel. (91) 431 33 99 (Libros)  
431 32 22 (Suscripciones)  
435 36 37 (Dirección)

Télex 49370-MPLI-E  
Fax (91) 275 39 98

Sucursal:

**Librería Internacional AEDOS**

Consejo de Ciento, 391  
08009 Barcelona  
Tel. (93) 301 86 15  
Fax (93) 317,01 41

Generalitat de Catalunya:

**Librería Rambla dels estudis**

Rambla, 118 (Palau Moja)  
08002 Barcelona  
Tel. (93) 302 68 35  
302 64 62

**FRANCE**

**Journal officiel  
Service des publications  
des Communautés européennes**

26, rue Desaix  
75727 Paris Cedex 15  
Tél. (1) 40 58 75 00  
Fax (1) 40 58 75 74

**IRELAND**

**Government Publications Sales Office**

Sun Alliance House  
Molesworth Street  
Dublin 2  
Tel. 71 03 09

or by post

**Government Stationery Office**

**EEC Section**

6th floor  
Bishop Street  
Dublin 8  
Tel. 78 16 66  
Fax 78 06 45

**ITALIA**

**Licosa Spa**

Via Benedetto Fortini, 120/10  
Casella postale 552  
50125 Firenze  
Tel. (055) 64 54 15  
Fax 64 12 57  
Telex 570466 LICOSA I  
CCP 343 509

Subagenti:

**Libreria scientifica Lucio de Biasio - AEIOU**

Via Meravigli, 16  
20123 Milano  
Tel. (02) 80 76 79

**Herder Editrice e Libreria**

Piazza Montecitorio, 117-120  
00186 Roma  
Tel. (06) 679 46 28/679 53 04

**Libreria giuridica**

Via 12 Ottobre, 172/R  
16121 Genova  
Tel. (010) 59 56 93

**GRAND-DUCHÉ DE LUXEMBOURG**

Abonnements seulement  
Subscriptions only  
Nur für Abonnements

**Messageries Paul Kraus**

11, rue Christophe Plantin  
2339 Luxembourg  
Tél. 499 88 88  
Télex 2515  
CCP 49242-63

**NEDERLAND**

**SDU uitgeverij**

Christoffel Plantijnstraat 2  
Postbus 20014  
2500 EA 's-Gravenhage  
Tel. (070) 78 98 80 (bestellingen)  
Fax (070) 47 63 51

**PORTUGAL**

**Imprensa Nacional**

Casa da Moeda, EP  
Rua D. Francisco Manuel de Melo, 5  
1092 Lisboa Codex  
Tel. (01) 69 34 14

**Distribuidora de Livros Bertrand, Ld.ª**

**Grupo Bertrand, SARL**

Rua das Terras dos Vales, 4-A  
Apartado 37  
2700 Amadora Codex  
Tel. (01) 493 90 50 - 494 87 88  
Telex 15798 BERDIS  
Fax 491 02 55

**UNITED KINGDOM**

**HMSO Books (PC 16)**

HMSO Publications Centre  
51 Nine Elms Lane  
London SW8 5DR  
Tel. (01) 873 9090  
Fax GPO 873 8463

Sub-agent:

**Alan Armstrong Ltd**

2 Arkwright Road  
Reading, Berks RG2 0SQ  
Tel. (0734) 75 18 55  
Telex 849937 AAALTD G  
Fax (0734) 75 51 64

**SCHWEIZ / SUISSE / SVIZZERA**

**OSEC**

Stampfenbachstraße 85  
8035 Zürich  
Tel. (01) 365 51 51  
Fax (01) 365 52 21

**ÖSTERREICH**

**Manz'sche Verlags-  
und Universitätsbuchhandlung**

Kohlmarkt 16  
1014 Wien  
Tel. (0222) 531 61-0  
Telex 11 25 00 BOX A  
Fax (0222) 531 61-81

**TÜRKIYE**

**Dünya süper veb ofset A.Ş.**

Narlıbahçe Sokak No. 15  
Cağaloğlu  
Istanbul  
Tel. 512 01 90  
Telex 23822 DSVO-TR

**UNITED STATES OF AMERICA**

**UNIPUB**

4611-F Assembly Drive  
Lanham, MD 20706-4391  
Tel. Toll Free (800) 274 4888  
Fax (301) 459 0056  
Telex 7108260418

**CANADA**

**Renouf Publishing Co., Ltd**

61 Sparks Street  
Ottawa  
Ontario K1P 5R1  
Tel. Toll Free 1 (800) 267 41 64  
Ottawa Region (613) 238 89 85-6  
Telex 053-4936

**JAPAN**

**Kinokuniya Company Ltd**

17-7 Shinjuku 3-Chome  
Shinjuku-ku  
Tokyo 160-91  
Tel. (03) 354 01 31

**Journal Department**

PO Box 55 Chitose  
Tokyo 156  
Tel. (03) 439 01 24

**SVERIGE**

**BTJ**

Box 200  
22100 Lund  
Tel. (046) 18 00 00  
Fax (046) 18 01 25

**AUTRES PAYS**

**OTHER COUNTRIES**

**ANDERE LÄNDER**

**Office des publications officielles  
des Communautés européennes**

2, rue Mercier  
L-2985 Luxembourg  
Tél. 49 92 81  
Télex PUBOF LU 1324 b  
Fax 48 85 73  
CC bancaire BIL 8-109/6003/700

Price (excl. VAT) in Luxembourg: Single copy ECU 4.40 • Subscription ECU 46.50



OFICINA DE PUBLICACIONES OFICIALES DE LAS COMUNIDADES EUROPEAS  
KONTORET FOR DE EUROPÆISKE FÆLLESSKABERS OFFICIELLE PUBLIKATIONER  
AMT FÜR AMTLICHE VERÖFFENTLICHUNGEN DER EUROPÄISCHEN GEMEINSCHAFTEN  
ΥΠΗΡΕΣΙΑ ΕΠΙΣΗΜΩΝ ΕΚΔΟΣΕΩΝ ΤΩΝ ΕΥΡΩΠΑΪΚΩΝ ΚΟΙΝΟΤΗΤΩΝ  
OFFICE FOR OFFICIAL PUBLICATIONS OF THE EUROPEAN COMMUNITIES  
OFFICE DES PUBLICATIONS OFFICIELLES DES COMMUNAUTÉS EUROPÉENNES  
UFFICIO DELLE PUBBLICAZIONI UFFICIALI DELLE COMUNITÀ EUROPEE  
BUREAU VOOR OFFICIELE PUBLIKATIES DER EUROPESE GEMEENSCHAPPEN  
SERVIÇO DAS PUBLICACÕES OFICIAIS DAS COMUNIDADES EUROPEIAS

ISSN 1010-2779

L - 2985 Luxembourg

Catalogue number: CA-CB-90-010- EN-C