

Consumer price index

1 □ 1991 Monthly

PRICES: The inflation rate for the Community in 1990 is 5.7% (1989 : 5.3%).

Between November and December 1990 the CPI for the EC went up by only 0.1%.

As in the preceding month the fall of oil prices in December caused decreases of the consumer price indices, especially in Denmark (-0.3%) and in the Netherlands (-0.2%) as well as in Belgium, France and the UK (all -0.1%). In Luxembourg the general level of the CPI remained unchanged between November and December, whereas small rises were recorded in Germany (+0.1%), Spain (+0.2%) as well as in Italy (+0.4%). Only Portugal (+0.8%) and Greece (+1.7%) reported substantial rises in their indices.

The near stability of the index for EUR 12 as a whole during November and December lead to a fall of the inflation rate over 12 months: from 6.1% in October to 5.7% in December.

This means that, in spite of the strong price increases recorded in August, September and October (caused by the surge in oil prices), the inflation rate over the year for the Community as a whole in 1990 (+5.7%) is not substantially higher than it was 1989 (+5.3%). As the following table shows, inflation rates are lower than last year in 6 out of the 12 EC countries.

	December			December	
	90/89	89/88		90/89	89/88
Denmark	+2.0	+4.8	Luxembourg	+ 4.4	+ 3.9
Ireland	+2.7	+4.6	Spain	+ 6.5	+ 6.9
Netherlands	+2.7	+1.3	Italy	+ 6.8	+ 6.3
Germany	+2.8	+3.0	United Kingdom	+ 9.4	+ 7.7
France	+3.4	+3.6	Portugal	+13.7	+11.6
Belgium	+3.5	+3.6	Greece	+22.8	+14.8

Similar to the EC, the CPI for the United States remained rather stable during the last 2 months; consequently the inflation rate over 12 months went slightly down from 6.3% in October to 6.1% in December (1989: 4.6%).

The corresponding rate of Japan is 4.0% (1989 : 2.6%). The rates for some other non EC countries are as follows: Austria 3.5%, Norway 4.4%, Finland 4.9%, Canada 5.0% (E), Switzerland 5.3% and Sweden 10.9%.

N.B.: The consumer price indices for the Federal Republic of Germany and for EUR 12 continue to reflect the geographic definitions prior to 3 October 1990.

OFICINA ESTADÍSTICA DE LAS COMUNIDADES EUROPEAS
DE EUROPÆISKE FÆLLESSKABERS STATISTISKE KONTOR
STATISTISCHES AMT DER EUROPÄISCHEN GEMEINSCHAFTEN
ΣΤΑΤΙΣΤΙΚΗ ΥΠΗΡΕΣΙΑ ΤΩΝ ΕΥΡΩΠΑΪΚΩΝ ΚΟΙΝΟΤΗΤΩΝ
STATISTICAL OFFICE OF THE EUROPEAN COMMUNITIES
OFFICE STATISTIQUE DES COMMUNAUTÉS EUROPÉENNES
ISTITUTO STATISTICO DELLE COMUNITÀ EUROPEE
BUREAU VOOR DE STATISTIEK DER EUROPESE GEMEENSCHAPPEN
SERVIÇO DE ESTATÍSTICA DAS COMUNIDADES EUROPEIAS

L-2920 Luxembourg — Tél. 43011 — Télex : Comeur Lu 3423
B-1049 Bruxelles, bâtiment Berlaymont, rue de la Loi 200 (bureau de liaison) — Tél. 235 1111

The information included in this bulletin has been taken from the Cronos data bank, which is accessible via the different host companies. For all information about these host companies contact Eurostat in Luxembourg, tel. 4301-4567.

To obtain specifications of the principal characteristics of the series contained in this bulletin contact Luxembourg:

Mr Nijenhuis, tel. 4301-3202

Mr Desantis, tel. 4301-3511

VERBRAUCHERPREISE

CONSUMER PRICES

PRIX A LA CONSOMMATION

GESAMTINDEX

GENERAL INDEX

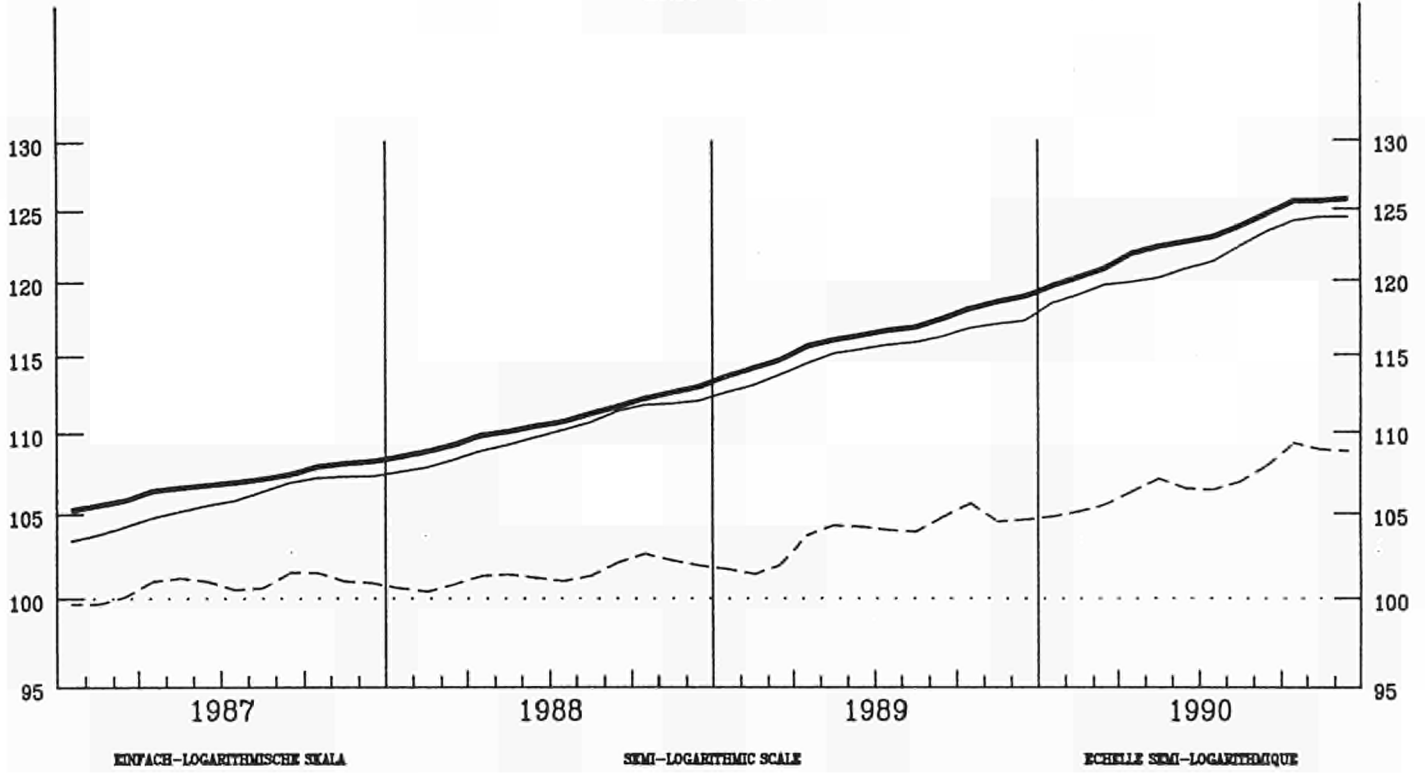
INDICE GENERAL

— USA

— EUR 12

- - - JAPAN

1985 = 100



VERÄNDERUNG % T/T-12

VARIATION % T/T-12

VARIATION % T/T-12

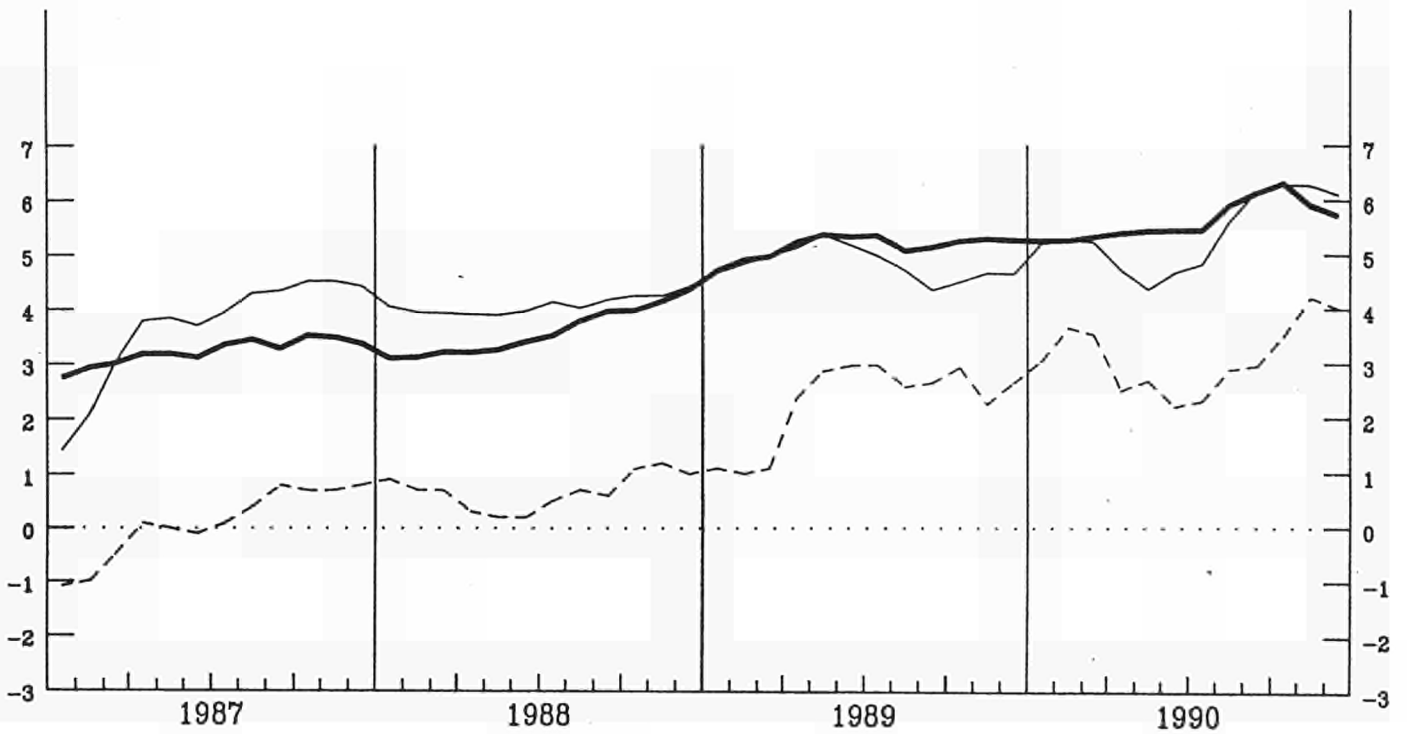


TABLE I

CONSUMER PRICES

GENERAL INDEX

	EUR 12	B	DK	D	GR	E	F	IRL	I	L	NL	P	UK	
	Price indices							1985=100						
Annual average														
1987	106.9	102.9	107.8	100.1	143.2	114.5	105.9	107.1	110.9	100.2	99.8	122.2	107.7	
1988	110.7	104.1	112.7	101.4	162.5	120.0	108.7	109.4	116.5	101.7	100.6	133.9	113.0	
1989	116.4	107.3	118.1	104.2	184.9	128.2	112.5	113.9	123.8	105.1	101.7	150.8	121.8	
1990P	123.0	111.0	121.2	107.0	222.6	136.8	116.3	117.6	131.8	109.0	104.2	170.9	133.3	
1989														
December	118.9	108.8	120.2	105.2	199.9	132.0	114.1	:	127.0	106.7	102.6	158.0	125.6	
1990														
January	119.6	109.2	119.5	105.8	201.3	133.2	114.4	:	128.2	107.5	102.4	160.7	126.3	
February	120.2	109.4	119.7	106.2	201.4	134.0	114.6	116.7	129.2	107.6	102.8	164.4	127.1	
March	120.8	109.7	120.2	106.3	209.0	134.5	115.0	:	129.7	107.6	103.2	165.4	128.3	
April	121.8	110.2	120.2	106.5	212.6	134.9	115.4	:	130.2	108.1	103.7	167.4	132.2	
May	122.3	110.2	121.1	106.7	218.9	134.9	115.7	117.1	130.6	108.3	103.8	169.2	133.4	
June	122.7	110.3	120.8	106.8	223.8	135.3	115.9	:	131.2	108.3	103.7	169.8	133.9	
July	123.0	110.7	120.4	106.8	223.2	137.0	116.2	:	131.6	108.5	104.0	171.0	134.0	
August	123.7	111.3	121.7	107.1	224.5	137.7	116.9	118.0	132.5	109.0	104.4	173.1	135.4	
September	124.6	112.4	122.7	107.5	232.3	139.2	117.5	:	133.2	109.7	105.3	175.1	136.7	
October	125.5	113.1	122.9	108.2	237.9	140.5	118.2	:	134.3	110.8	105.6	177.0	137.7	
November	125.6	112.7	122.8	108.0	241.3	140.2	118.0	118.7	135.1P	111.4	105.6	178.2	137.4	
December	125.7P	112.6	122.4P	108.1	245.4	140.5	117.9P	:	135.6P	111.4	105.4	179.6	137.3	
	Rates of increase over one month (IRL 3 months)							(T/T-1)						
1989														
Dec./Nov.	0.3	0.4	0.0	0.3	1.8	0.4	0.1	:	0.4	0.1	0.0	1.1	0.3	
1990														
Jan/Dec	0.6	0.4	-0.6	0.6	0.7	0.9	0.3	:	0.9	0.8	-0.2	1.7	0.6	
Feb./Jan.	0.5	0.2	0.2	0.4	0.1	0.6	0.2	1.0	0.8	0.1	0.4	2.3	0.6	
March/Feb.	0.5	0.2	0.3	0.1	3.8	0.4	0.3	:	0.4	0.0	0.4	0.6	1.0	
April/March	0.9	0.5	0.1	0.2	1.7	0.2	0.4	:	0.4	0.4	0.5	1.2	3.0	
May/April	0.4	0.0	0.7	0.2	3.0	0.0	0.2	0.3	0.3	0.2	0.1	1.1	0.9	
June/May	0.3	0.1	-0.2	0.1	2.2	0.3	0.2	:	0.5	0.0	-0.1	0.3	0.4	
July/June	0.3	0.4	-0.3	0.0	-0.2	1.3	0.3	:	0.3	0.2	0.3	0.7	0.1	
August/July	0.6	0.6	1.0	0.3	0.6	0.5	0.6	0.8	0.7	0.5	0.4	1.3	1.0	
Sept./August	0.7	0.9	0.8	0.4	3.5	1.0	0.5	:	0.5	0.6	0.9	1.1	0.9	
Oct./Sept.	0.7	0.7	0.2	0.7	2.4	0.9	0.5	:	0.8	1.0	0.3	1.1	0.8	
Nov./Oct.	0.0	-0.4	-0.1	-0.2	1.4	-0.1	-0.2	0.6	0.6P	0.5	0.0	0.7	-0.2	
Dec./Nov.	0.1P	-0.1	-0.3P	0.1	1.7	0.2	-0.1P	:	0.4P	0.0	-0.2	0.8	-0.1	
	Rates of increase over 12 months							(T/T-12)						
1989/88														
December	5.3	3.6	4.8	3.0	14.8	6.9	3.6	:	6.3	3.9	1.3	11.6	7.7	
1990/89														
January	5.2	3.6	3.7	2.7	15.9	6.8	3.4	:	6.6	4.0	2.0	12.1	7.7	
February	5.3	3.4	3.2	2.7	16.5	7.3	3.4	4.2	6.5	3.8	2.1	13.1	7.5	
March	5.3	3.4	3.0	2.7	17.8	7.0	3.4	:	6.3	3.5	2.1	12.8	8.1	
April	5.4	3.2	2.4	2.3	17.9	7.0	3.2	:	6.2	3.6	2.1	12.9	9.4	
May	5.4	3.1	2.4	2.3	21.0	6.8	3.0	3.5	6.0	3.4	2.2	14.0	9.7	
June	5.4	3.0	2.5	2.3	21.7	6.6	3.0	:	6.1	3.1	2.2	13.6	9.8	
July	5.5	3.0	2.1	2.4	21.6	6.2	3.0	:	6.2	3.0	2.3	13.3	9.8	
August	5.9	3.3	2.6	2.8	21.9	6.5	3.5	2.8	6.7	3.3	2.4	12.7	10.6	
September	6.1	3.7	3.1	3.1	21.8	6.4	3.8	:	6.7	3.7	2.7	13.7	10.9	
October	6.3	4.3	2.7	3.3	22.3	7.0	3.9	:	6.8	4.2	2.9	14.4	10.9	
November	5.9	4.0	2.2	3.0	22.9	6.7	3.5	2.7	6.8P	4.5	2.9	14.1	9.7	
December	5.7P	3.5	1.9P	2.8	22.8	6.5	3.4P	:	6.8P	4.4	2.7	13.7	9.3	

TABLE II

CONSUMER PRICES

GENERAL INDEX

	U.S.A	Japan	Switzerland	Austria	Norway	Sweden	Finland	Canada
	Price indices				1985=100			
Annual average								
1987	105.7	100.7	102.2	103.1	116.5	108.6	107.1	108.7
1988	110.0	101.4	104.2	105.1	124.3	114.9	112.6	113.1
1989	115.3	103.7	107.4	107.8	130.0	122.3	120.0	118.7
1990P	121.5	107.0	113.2	:	135.4	:	127.3	:
1989								
December	117.3	104.6	110.2	108.5	131.5	125.4	123.0	120.7
1990								
January	118.5	104.8	110.8	109.2	132.5	129.4	124.8	121.8
February	119.0	105.1	111.2	110.0	133.0	130.0	125.3	122.5
March	119.7	105.5	111.6	110.1	134.5	133.6	125.7	122.9
April	119.9	106.3	111.8	110.4	134.5	133.5	126.4	123.0
May	120.1	107.1	112.3	110.5	134.8	134.2	127.0	123.6
June	120.8	106.5	112.5	110.8	135.2	134.1	127.3	124.1
July	121.3	106.4	112.6	112.2	135.4	135.4	127.5	124.7
August	122.4	106.9	113.8	112.8	135.2	136.3	128.1	124.8
September	123.4	107.9	114.3	112.6	136.5	137.9	128.8	125.2
October	124.1	109.3	115.0	112.7	137.6	138.8	129.2	126.2
November	124.4	108.9	116.0	112.3	137.6	139.3	129.1	126.9
December	124.4	108.8P	116.0	:	137.2	139.2	129.0	:
	Rates of increase over one month (IRL 3 months)				(T/T-1)			
1989								
Dec./Nov.	0.2	0.1	0.7	0.4	-0.1	0.3	0.6	-0.1
1990								
Jan/Dec	1.0	0.2	0.6	0.7	0.8	3.2	1.5	0.8
Feb./Jan.	0.5	0.3	0.3	0.7	0.4	0.5	0.4	0.6
March/Feb.	0.5	0.4	0.3	0.1	1.1	2.8	0.3	0.3
April/March	0.2	0.8	0.3	0.3	0.0	-0.1	0.6	0.1
May/April	0.2	0.8	0.4	0.1	0.2	0.6	0.5	0.5
June/May	0.5	-0.6	0.2	0.2	0.3	-0.1	0.2	0.4
July/June	0.4	-0.1	0.1	1.3	0.1	1.0	0.2	0.5
August/July	0.9	0.5	1.1	0.5	-0.1	0.7	0.5	0.1
Sept./August	0.8	0.9	0.4	-0.2	1.0	1.1	0.5	0.3
Oct./Sept.	0.6	1.3	0.7	0.1	0.8	0.7	0.3	0.9
Nov./Oct.	0.2	-0.4	0.9	-0.4	0.0	0.3	-0.1	0.6
Dec./Nov.	0.0	-0.1P	0.0	:	-0.3	-0.1	-0.1	:
	Rates of increase over 12 months				(T/T-12)			
1989/88								
December	4.6	2.6	5.0	2.9	4.2	6.6	6.6	5.1
1990/89								
January	5.2	3.0	5.0	2.9	4.2	8.7	7.6	5.5
February	5.3	3.6	4.9	3.1	4.3	8.6	7.5	5.4
March	5.2	3.5	5.0	3.1	4.5	11.2	6.6	5.3
April	4.7	2.5	4.7	3.1	4.0	10.0	6.1	5.0
May	4.4	2.7	5.0	3.0	3.9	10.2	6.3	4.5
June	4.7	2.2	5.0	2.9	3.6	9.7	5.6	4.3
July	4.8	2.3	5.3	3.0	3.6	10.8	5.8	4.1
August	5.6	2.9	6.1	3.2	3.8	11.1	6.2	4.1
September	6.2	3.0	6.0	3.7	3.9	11.5	5.7	4.3
October	6.3	3.5	6.4	3.7	4.6	11.3	5.6	4.8
November	6.3	4.2	6.0	3.9	4.5	11.4	5.6	5.0
December	6.1	4.0P	5.3	:	4.4	10.9	4.9	:

EXPLANATORY NOTES

METHODOLOGY

The consumer price indices given here are the national indices which have different names in each country. As far as trends are concerned, the general index published by EUROSTAT always corresponds to the general index published by the country. The component items of this general index are groups of national indices aggregated according to a harmonized classification conforming to the ESA (European System of Integrated Economic Accounts). For these groups, the price trends correspond to the trends noted by the national indices for the same classification field. The field covered by the general index varies according to country: as regards the population concerned (specific income bracket, certain socio-professional categories or total households), the geographical areas used (capital, urban areas, country as a whole, etc.) or differences in treatments of expenditure on rent, health care, etc... Finally, there is no uniform method for seasonal adjustments. A fixed base system is used in some countries, whereas in others a chain system is used (variable weightings). The reference years used at national level for the indices vary according to country. For ease of comparison, EUROSTAT has chosen 1985 as the common year for the presentation of these indices.

THE CALCULATION OF THE EUR-12 INDEX

The Eur-12 index as calculated by EUROSTAT is a weighted average of national price indices. The weight used is the proportion of each country in the final consumption of households for EUR-12. The values of this consumption in national currency are converted into purchasing power standard (PPS); for this purpose the purchasing power parities of the G.D.P. are used. Up to 1987 purchasing power parities are those which result from the 1980 enquiry, from 1988 onwards they are those from the 1985 enquiry. The index calculated is a chain index of the "Laspeyres" type with weights changing each year. However, the weights are lagged by three years since the national accounts data needed become available only after three years. For example: the weights used for 1990 are those of 1987, for 1989 those of 1986. Moreover, national accounts data are often revised leading to revisions of the consumption weights. In order to avoid continuous modifications in the EUR-12 index for previous periods, EUROSTAT has decided to "freeze" the weights which are used. Thus the EUR-12 index will not be affected by revisions of the national accounts. However when Member States carry out major revisions in the price series for past years, EUR-12 data will be calculated using these new series.

**Venta y suscripciones • Salg og abonnement • Verkauf und Abonnement • Πωλήσεις και συνδρομές
Sales and subscriptions • Vente et abonnements • Vendita e abbonamenti
Verkoop en abonnementen • Venda e assinaturas**

BELGIQUE / BELGIË

Moniteur belge / Belgisch Staatsblad

Rue de Louvain 42 / Louvenseweg 42
1000 Bruxelles / 1000 Brussel
Tél. (02) 512 00 26
Fax 511 01 84
CCP / Postrekening 000-2005502-27

Autres distributeurs / Overige verkooppunten

**Librairie européenne /
Europese Boekhandel**

Avenue Albert Jonnart 50 /
Albert Jonnartlaan 50
1200 Bruxelles / 1000 Brussel
Tél. (02) 734 02 81
Fax 735 08 60

Jean De Lannoy

Avenue du Roi 202 /Koningslaan 202
1060 Bruxelles / 1060 Brussel
Tél. (02) 538 51 69
Télex 63220 UNBOOK B

CREDOC

Rue de la Montagne 34 / Bergstraat 34
Bte 11 / Bus 11
1000 Bruxelles / 1000 Brussel

DANMARK

J. H. Schultz Information A/S

EF-Publikationer

Ottillavej 18
2500 Valby
Tlf. 36 44 22 66
Fax 36 44 01 41
Girokonto 6 00 08 86

BR DEUTSCHLAND

Bundesanzeiger Verlag

Breite Straße
Postfach 10 80 06
5000 Köln 1
Tél. (0221) 20 29-0
Fernschreiber:
ANZEIGER BONN 8 882 595
Fax 20 29 278

GREECE

G.C. Eleftheroudakis SA

International Bookstore
Nikis Street 4
10563 Athens
Tél. (01) 322 63 23
Telex 219410 ELEF
Fax 323 98 21

ESPAÑA

Boletín Oficial del Estado

Trafalgar, 27
28010 Madrid
Tél. (91) 446 60 00

Mundi-Prensa Libros, S.A.

Castelló, 37
28001 Madrid
Tél. (91) 431 33 99 (Libros)
431 32 22 (Suscripciones)
435 36 37 (Dirección)
Télex 49370-MPLI-E
Fax (91) 275 39 98

Sucursal:

Librería Internacional AEDOS

Consejo de Ciento, 391
08009 Barcelona
Tél. (93) 301 86 15
Fax (93) 317 01 41

Generalitat de Catalunya:

Librería Rambla dels estudis

Rambla, 118 (Palau Moja)
08002 Barcelona
Tél. (93) 302 68 35
302 64 62

FRANCE

**Journal officiel
Service des publications
des Communautés européennes**

26, rue Desaix
75727 Paris Cedex 15
Tél. (1) 40 58 75 00
Fax (1) 40 58 75 74

IRELAND

Government Publications Sales Office

Sun Alliance House
Molesworth Street
Dublin 2
Tél. 71 03 09

or by post

Government Stationery Office

EEC Section

6th floor
Bishop Street
Dublin 8
Tél. 78 16 66
Fax 78 06 45

ITALIA

Licosa Spa

Via Benedetto Fortini, 120/10
Casella postale 552
50125 Firenze
Tél. (055) 64 54 15
Fax 64 12 57
Telex 570466 LICOSA I
CCP 343 509

Subagenti:

Libreria scientifica Lucio de Biasio - AEIOU

Via Meravigli, 16
20123 Milano
Tél. (02) 80 76 79

Herder Editrice e Libreria

Piazza Montecitorio, 117-120
00186 Roma
Tél. (06) 679 46 28/679 53 04

Libreria giuridica

Via 12 Ottobre, 172/R
16121 Genova
Tél. (010) 59 56 93

GRAND-DUCHÉ DE LUXEMBOURG

Abonnements seulement
Subscriptions only
Nur für Abonnements

Messageries Paul Kraus

11, rue Christophe Plantin
2339 Luxembourg
Tél. 499 88 88
Télex 2515
CCP 49242-63

NEDERLAND

SDU uitgeverij

Christoffel Plantijnstraat 2
Postbus 20014
2500 EA 's-Gravenhage
Tél. (070) 78 98 80 (bestellingen)
Fax (070) 47 63 51

PORTUGAL

Imprensa Nacional

Casa da Moeda, EP
Rua D. Francisco Manuel de Melo, 5
1092 Lisboa Codex
Tél. (01) 69 34 14

Distribuidora de Livros Bertrand, Ld.º

Grupo Bertrand, SARL
Rua das Terras dos Vales, 4-A
Apartado 37
2700 Amadora Codex
Tél. (01) 493 90 50 - 494 87 88
Telex 15798 BERDIS
Fax 491 02 55

UNITED KINGDOM

HMSO Books (PC 16)

HMSO Publications Centre
51 Nine Elms Lane
London SW8 5DR
Tél. (01) 873 9090
Fax GP3 873 8463

Sub-agent:

Alan Armstrong Ltd

2 Arkwright Road
Reading, Berks RG2 0SQ
Tél. (0734) 75 18 55
Telex 849937 AAALTD G
Fax (0734) 75 51 64

SCHWEIZ / SUISSE / SVIZZERA

OSEC

Stampfenbachstraße 85
8035 Zürich
Tél. (01) 365 51 51
Fax (01) 365 52 21

ÖSTERREICH

**Manz'sche Verlags-
und Universitätsbuchhandlung**

Kohlmarkt 16
1014 Wien
Tél. (0222) 531 61-0
Telex 11 25 00 BOX A
Fax (0222) 531 61-81

TÜRKIYE

Dünya süper veb ofset A.Ş.

Narlibahçe Sokak No. 15
Cağaloğlu
Istanbul
Tél. 512 01 90
Telex 23822 DSVO-TR

UNITED STATES OF AMERICA

UNIPUB

4611-F Assembly Drive
Lanham, MD 20706-4391
Tél. Toll Free (800) 274 4888
Fax (301) 459 0056
Telex 7108260418

CANADA

Renouf Publishing Co., Ltd

61 Sparks Street
Ottawa
Ontario K1P 5R1
Tél. Toll Free 1 (800) 267 41 64
Ottawa Region (613) 238 89 85-6
Telex 053-4936

JAPAN

Kinokuniya Company Ltd

17-7 Shinjuku 3-Chome
Shinjuuku-ku
Tokyo 160-91
Tél. (03) 354 01 31

Journal Department

PO Box 55 Chitose
Tokyo 156
Tél. (03) 439 01 24

SVERIGE

BTJ

Box 200
22100 Lund
Tél. (046) 18 00 00
Fax (046) 18 01 25

AUTRES PAYS
OTHER COUNTRIES
ANDERE LÄNDER

**Office des publications officielles
des Communautés européennes**

2, rue Mercier
L-2985 Luxembourg
Tél. 49 92 81
Télex PUBOF LU 1324 b
Fax 48 85 73
CC bancaire BIL 8-109/6003/700

Price (excl. VAT) in Luxembourg: Single copy ECU 5 • Subscription ECU 51



OFICINA DE PUBLICACIONES OFICIALES DE LAS COMUNIDADES EUROPEAS
KONTORET FOR DE EUROPÆISKE FÆLLESSKABERS OFFICIELLE PUBLIKATIONER
AMT FÜR AMTLICHE VERÖFFENTLICHUNGEN DER EUROPÄISCHEN GEMEINSCHAFTEN
ΥΠΗΡΕΣΙΑ ΕΠΙΣΗΜΩΝ ΕΚΔΟΣΕΩΝ ΤΩΝ ΕΥΡΩΠΑΙΚΩΝ ΚΟΙΝΟΤΗΤΩΝ
OFFICE FOR OFFICIAL PUBLICATIONS OF THE EUROPEAN COMMUNITIES
OFFICE DES PUBLICATIONS OFFICIELLES DES COMMUNAUTÉS EUROPÉENNES
UFFICIO DELLE PUBBLICAZIONI UFFICIALI DELLE COMUNITÀ EUROPEE
BUREAU VOOR OFFICIELE PUBLIKATIES DER EUROPESE GEMEENSCHAPPEN
SERVIÇO DAS PUBLICAÇÕES OFICIAIS DAS COMUNIDADES EUROPEIAS

ISSN 1010-2779

L - 2985 Luxembourg

Catalogue number: CA-CB-91-001-EN-C