

Consumer price index

12 □ 1995 Monthly

PRICES: EU ANNUAL INFLATION STABLE AT 3.0% IN NOVEMBER

The annual inflation rate for the EU as a whole remained unchanged from October at 3.0% in November.

A year ago, in November 1994, the corresponding rate was 2.9%. During the last 12 months the EU annual inflation rate showed a near-stability as it was situated constantly between 3.0% and 3.2%.

The monthly index for EUR-15 rose by 0.2% between October and November. There was a marked increase in the index of Italy (+0.6%), whereas low to moderate increases were recorded in Belgium and Spain (+0.3%), Denmark and Greece (0.2%), France and Portugal (+0.1%).

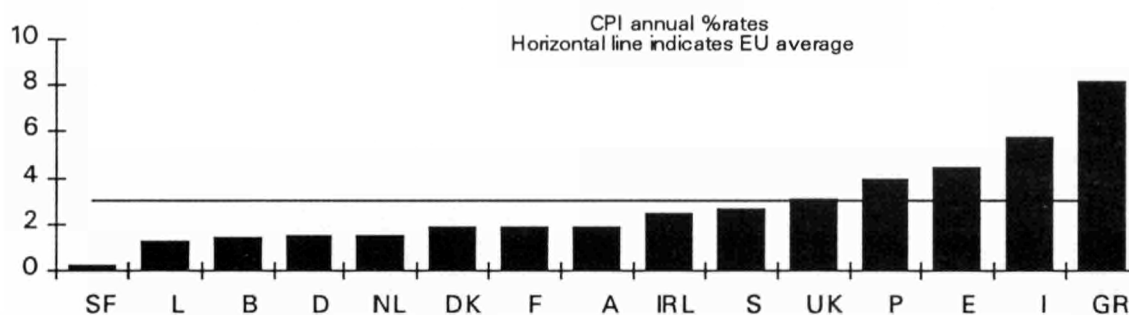
The indices of Germany, Luxembourg, the Netherlands, Sweden and the UK remained unchanged from October to November.

Finally, there were decreases in the indices of Austria (-0.1%) and Finland (-0.3%).

The quarterly index for Ireland rose by 0.1% between Mid-August and Mid-November.

In ascending order of current inflation, the annual rates of the Member States for November 1995 and those for the corresponding period of 1994 are as follows :

	November 1995	November 1994		November 1995	November 1994
	November 1994	November 1993		November 1994	November 1993
Finland	0.3 %	1.6 %	Ireland	2.4 %	2.4 %
Luxembourg	1.3 %	2.0 %	Sweden	2.7 %	2.4 %
Belgium	1.5 %	2.0 %	United Kingdom	3.1 %	2.6 %
Netherlands	1.6 %	2.5 %	Portugal	3.9 %	4.0 %
Germany*	1.7 %	2.5 %	Spain	4.4 %	4.3 %
Denmark	1.9 %	2.1 %	Italy	5.8 %p	3.9 %
France	1.9 %	1.6 %	Greece	8.2 %	10.6 %
Austria	1.9 %	2.8 %	EUR-15	3.0 %p	2.9 %



The corresponding rates for some other countries are : United States 2.6%, Canada 2.1%, Japan -0.8%, Iceland 2.1%, Norway 2.1% and Switzerland 1.9%..

* The rates for Germany are those for the whole country, including the new "Länder" and East-Berlin. For technical reasons the data for Germany at Table 1 on page 4 continue to reflect the price evolution in the old "Länder" only.
p = provisional



OFICINA ESTADÍSTICA DE LAS COMUNIDADES EUROPEAS
DE EUROPÆISKE FÆLLESSKABERS STATISTISKE KONTOR
STATISTISCHES AMT DER EUROPÄISCHEN GEMEINSCHAFTEN
ΣΤΑΤΙΣΤΙΚΗ ΥΠΗΡΕΣΙΑ ΤΩΝ ΕΥΡΩΠΑΪΚΩΝ ΚΟΙΝΟΤΗΤΩΝ
STATISTICAL OFFICE OF THE EUROPEAN COMMUNITIES
OFFICE STATISTIQUE DES COMMUNAUTÉS EUROPÉENNES
ISTITUTO STATISTICO DELLE COMUNITÀ EUROPEE
BUREAU VOOR DE STATISTIEK DER EUROPESE GEMEENSCHAPPEN
SERVIÇO DE ESTATÍSTICA DAS COMUNIDADES EUROPEIAS

L-2920 Luxembourg — Tél. 43 01-1 — Télex COMEUR LU 3423
B-1049 Bruxelles, rue de la Loi 200 — Tél. 299 11 11

The information included in this bulletin has been taken from the Cronos databank, which is accessible via the different host companies. For all information about these host companies contact Eurostat in Luxembourg, tel. 4301-34567, fax 436404.

To obtain specifications of the principal characteristics of the series contained in this bulletin contact Luxembourg:

Mr Nijenhuis,

Tel. 4301-33202

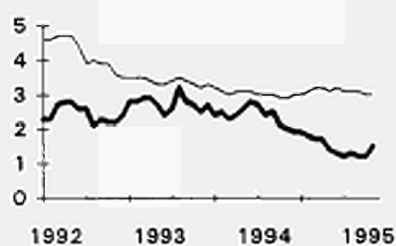
Fax 4301-33989

VERBRAUCHERPREISE
GESAMTINDEX
VERÄNDERUNG % T/T-12

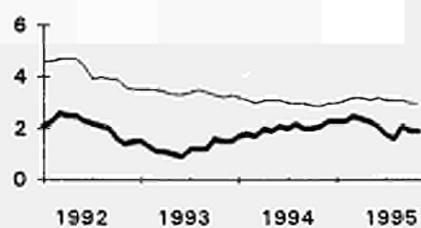
CONSUMER PRICES
GENERAL INDEX
VARIATION % T/T-12

PRIX A LA CONSOMMATION
INDICE GENERAL
VARIATION % T/T-12

BELGIQUE - BELGIE



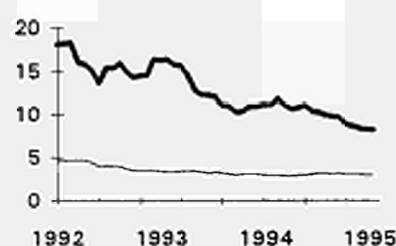
DANMARK



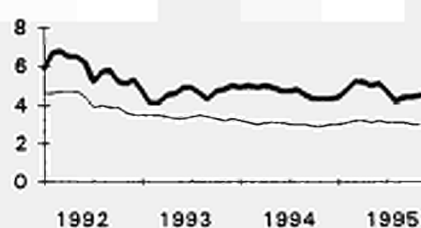
BR DEUTSCHLAND



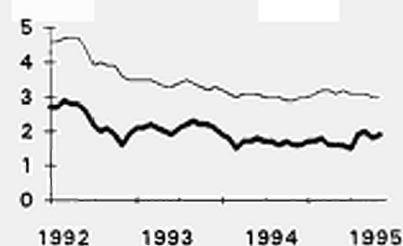
ELLADA



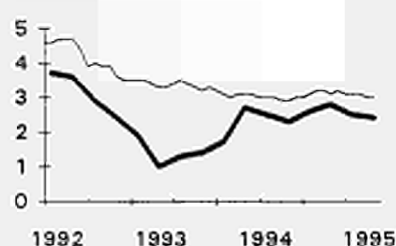
ESPAÑA



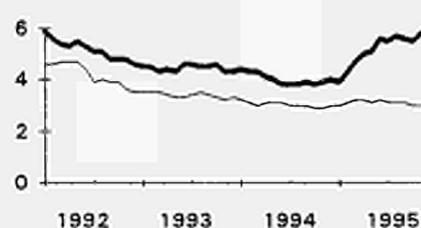
FRANCE



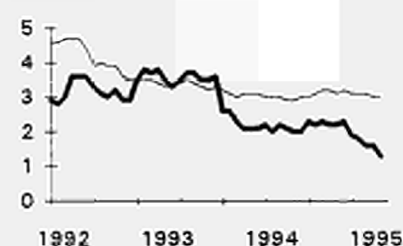
IRELAND



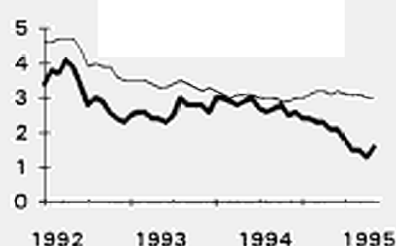
ITALIA



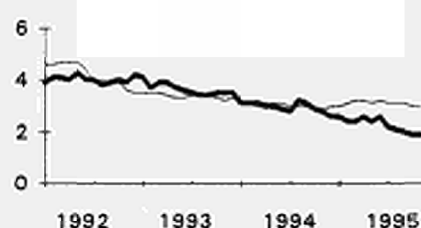
LUXEMBOURG



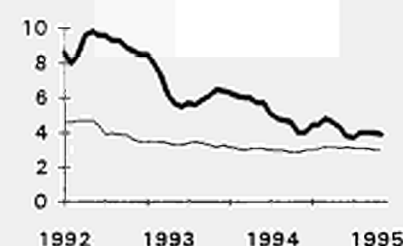
NEDERLAND



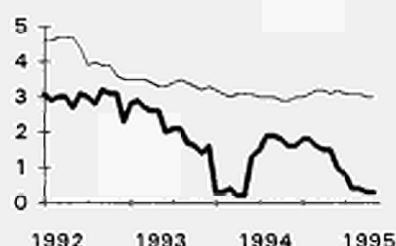
ÖSTERREICH



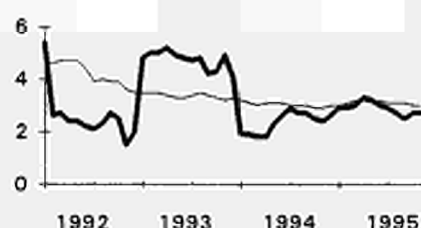
PORTUGAL



SUOMI - FINLAND



SVERIGE



UNITED KINGDOM



TABLE I

	CONSUMER PRICES								GENERAL INDEX			
	EUR 15	B	DK	D	GR	E	F	IRL	I	L	NL	
Annual average	Price indice								1985 = 100			
1991	129.7	114.6	124.1	110.9	268.0	145.0	120.2	121.3	140.0	112.4	108.3	
1992	135.1	117.4	126.7	115.3	308.1	153.5	123.0	125.1	147.3	115.9	111.7	
1993	139.7	120.6	128.3	119.5	352.6	160.6	125.6	126.9	153.8	120.1	114.6	
1994	143.9	123.5	130.9	122.6	391.1	168.1	127.8	129.8	160.0	122.7	117.8	
1994												
November	145.2	123.9	132.0	123.1	407.3	170.3	128.5	130.7	162.4	123.9	119.0	
December	145.5	124.0	132.0	123.4	411.9	171.1	128.3	:	162.8	124.1	118.5	
1995												
January	145.9	124.5	132.1	123.7	410.2	172.9	128.7	:	163.4	124.5	118.8	
February	146.7	124.8	132.7	124.3	408.5	173.7	129.2	131.8	164.8	124.7	119.4	
March	147.3	124.7	133.1	124.3	420.2	174.8	129.5	:	165.8	124.8	120.0	
April	147.9	124.9	133.5	124.6	425.2	175.7	129.6	:	166.6	124.8	120.2	
May	148.2	124.9	134.0	124.7	428.1	175.7	129.9	133.1	167.5	125.0	120.0	
June	148.6	125.0	133.8	125.1	431.9	176.0	129.9	:	168.7	125.1	119.8	
July	148.5	125.7	133.2	125.4	421.8	176.0	129.6	:	169.0	125.2	119.8	
August	148.9	126.0	133.4	125.2	422.1	176.4	130.2	133.8	169.5	125.1	120.0	
September	149.3	125.7	134.2	125.1	434.8	177.2	130.7	:	169.9	125.3	121.0	
October	149.3p	125.4	134.2	125.0	439.7	177.5	130.8	:	170.7p	125.5	120.9	
November	149.5p	125.8	134.5	125.0	440.7	178.0	130.9	133.9	171.7p	125.6	120.9	
1994	Rate of increase over one month (Ireland 3 Months)								(T/T-1)			
Nov./Oct.	0.1	0.0	0.3	0.1	0.3	0.2	0.0	0.2	0.4	0.3	-0.3	
Dec./Nov.	0.2	0.0	0.0	0.3	1.1	0.5	-0.1	:	0.2	0.1	-0.4	
1995												
Jan./Dec.	0.3	0.4	0.1	0.2	-0.4	1.1	0.3	:	0.4	0.4	0.2	
Feb./Jan.	0.5	0.3	0.4	0.5	-0.4	0.4	0.4	0.8	0.8	0.2	0.5	
March/Feb.	0.4	-0.1	0.3	0.0	2.9	0.6	0.3	:	0.6	0.1	0.5	
April/March	0.4	0.2	0.3	0.2	1.2	0.5	0.1	:	0.5	0.0	0.2	
May/April	0.2	0.0	0.4	0.1	0.7	0.0	0.2	1.0	0.6	0.2	-0.2	
June/May	0.3	0.1	-0.2	0.4	0.9	0.2	0.0	:	0.7	0.2	-0.2	
July/June	-0.1	0.5	-0.5	0.3	-2.3	0.0	-0.2	:	0.2	0.1	0.0	
August/July	0.2	0.3	0.2	-0.2	0.1	0.3	0.5	0.5	0.3	-0.1	0.2	
Sept./August	0.3	-0.3	0.6	-0.1	3.0	0.4	0.4	:	0.2	0.1	0.8	
Oct./Sept.	0.0p	-0.2	0.1	-0.1	1.1	0.2	0.1	:	0.5p	0.2	-0.1	
Nov./Oct.	0.2p	0.3	0.2	0.0	0.2	0.3	0.1	0.1	0.6p	0.0	0.0	
1994	Rate of increase over 12 months								(T/T-12)			
November	2.9	2.0	2.1	2.4	10.6	4.3	1.6	2.4	3.9	2.0	2.5	
December	3.0	1.9	2.3	2.5	10.8	4.3	1.6	:	4.0	2.0	2.6	
1995												
January	3.0	1.9	2.3	2.1	11.1	4.4	1.7	:	3.9	2.3	2.5	
February	3.1	1.8	2.3	2.1	10.4	4.8	1.7	2.6	4.3	2.2	2.4	
March	3.2	1.7	2.5	1.9	10.3	5.2	1.8	:	4.7	2.3	2.3	
April	3.2	1.7	2.4	2.0	9.9	5.2	1.6	:	5.0	2.2	2.3	
May	3.1	1.4	2.4	1.8	9.8	5.0	1.6	2.8	5.1	2.2	2.1	
June	3.2	1.3	2.1	1.9	9.7	5.1	1.6	:	5.6	2.3	2.2	
July	3.1	1.2	1.8	1.9	8.9	4.7	1.5	:	5.5	1.9	1.8	
August	3.1	1.3	1.6	1.5	8.7	4.3	1.9	2.5	5.7	1.8	1.5	
September	3.1	1.2	2.1	1.6	8.4	4.4	2.0	:	5.6	1.6	1.5	
October	3.0p	1.2	1.9	1.6	8.3	4.3	1.8	:	5.5p	1.6	1.3	
November	3.0p	1.5	1.9	1.5	8.2	4.4	1.9	2.4	5.8p	1.3	1.6	

TABLE II

CONSUMER PRICES					GENERAL INDEX						
A	P	FIN	S	UK	IS	N	CH	USA	JAP	CAN	
					Price indice 1985 = 100						Annual average
115.1	189.6	132.8	147.8	141.1	267.5	140.0	119.8	126.6	110.4	131.4	1991
119.7	206.7	136.7	151.1	146.4	278.1	143.3	124.6	130.5	112.3	133.4	1992
124.0	220.0	139.7	158.2	148.7	289.5	146.5	128.7	134.3	113.8	135.8	1993
127.7	231.5	141.2	161.6	152.4	294.0	148.6	129.8	137.8	114.6	136.1	1994
											1994
128.1	234.0	142.1	163.1	153.6	294.8	149.8	129.9	139.2	115.0	136.8	November
128.1	234.7	142.0	162.9	154.3	295.0	149.7	129.9	139.2	114.7	137.0	December
											1995
129.1	237.5	141.9	163.5	154.3	297.2	150.5	130.8	139.8	114.7	137.6	January
129.7	239.2	142.4	164.1	155.3	297.6	151.0	132.0	140.3	114.2	138.2	February
130.1	240.4	142.4	164.8	155.9	297.0	151.9	132.0	140.8	114.1	138.5	March
130.2	241.3	142.5	165.9	157.5	296.7	152.0	132.2	141.3	114.6	138.9	April
130.2	241.1	142.6	166.1	158.1	297.2	152.2	132.0	141.5	114.9	139.2	May
130.7	240.4	143.1	165.9	158.4	297.6	152.6	132.2	141.8	114.8	139.2	June
131.6	240.4	143.0	165.7	157.6	298.4	152.5	132.1	141.8	114.0	139.5	July
132.3	241.6	142.8	165.5	158.5	299.6	152.2	132.5	142.2	114.2	139.3	August
131.1	242.1	142.9	166.6	159.2	300.7	153.0	132.7	142.5	115.0	139.4	September
130.7	243.0	142.9	167.1	158.4	302.1	153.0	132.5	142.9	114.7	139.3	October
130.6	243.2	142.5	167.0	158.4	301.0	152.9	132.4	142.8	114.0	139.6	November
					Rate of increase over one month (Ireland 3 Months (T/T-1))						1994
-0.1	0.2	-0.3	-0.1	0.1	-0.1	0.1	-0.1	0.1	-0.3	0.5	Nov./Oct.
0.0	0.3	-0.1	-0.2	0.5	0.1	0.0	0.0	0.0	-0.3	0.2	Dec./Nov.
											1995
0.7	1.2	-0.1	0.4	0.0	0.8	0.5	0.7	0.4	0.0	0.4	Jan./Dec.
0.5	0.7	0.4	0.4	0.6	0.1	0.4	0.9	0.4	-0.4	0.5	Feb./Jan.
0.3	0.5	0.0	0.4	0.4	-0.2	0.6	0.0	0.3	-0.1	0.2	March/Feb.
0.1	0.4	0.1	0.7	1.0	-0.1	0.1	0.1	0.3	0.4	0.3	April/March
0.0	-0.1	0.1	0.1	0.4	0.2	0.1	-0.2	0.2	0.3	0.2	May/April
0.4	-0.3	0.4	-0.1	0.1	0.1	0.3	0.2	0.2	-0.1	0.0	June/May
0.7	0.0	-0.1	-0.1	-0.5	0.3	-0.1	-0.1	0.0	-0.7	0.2	July/June
0.5	0.5	-0.2	-0.1	0.5	0.4	-0.2	0.3	0.3	0.2	-0.2	August/July
-0.9	0.2	0.1	0.7	0.5	0.4	0.6	0.1	0.2	0.7	0.1	Sept./Augu
-0.3	0.4	0.0	0.3	-0.5	0.5	0.0	-0.1	0.3	-0.3	-0.1	Oct./Sept.
-0.1	0.1	-0.3	0.0	0.0	-0.3	-0.1	-0.1	-0.1	-0.6	0.2	Nov./Oct.
					Rate of increase over 12 months (T/T-12)						1994
2.8	4.0	1.6	2.4	2.6	-0.1	1.8	0.5	2.7	1.0	-0.1	November
2.6	4.0	1.6	2.6	2.9	0.5	1.9	0.4	2.7	0.7	0.2	December
											1995
2.6	4.4	1.8	2.9	3.3	1.7	2.6	1.0	2.8	0.6	0.6	January
2.4	4.6	1.8	2.9	3.4	1.7	2.6	1.5	2.9	0.2	1.8	February
2.4	4.8	1.6	3.0	3.5	1.4	2.7	1.5	2.9	-0.4	2.2	March
2.6	4.6	1.5	3.3	3.3	1.1	2.7	1.7	3.1	-0.2	2.5	April
2.4	4.3	1.5	3.2	3.4	1.3	2.7	2.0	3.2	0.0	2.9	May
2.6	3.8	1.0	3.0	3.5	1.3	2.7	2.1	3.0	0.3	2.7	June
2.2	3.7	0.8	2.9	3.5	1.4	2.4	2.0	2.8	0.1	2.5	July
2.1	4.1	0.5	2.7	3.6	1.8	2.2	1.9	2.6	-0.2	2.3	August
2.0	4.0	0.4	2.5	3.9	1.8	2.4	2.0	2.5	0.2	2.3	September
1.9	4.0	0.3	2.7	3.2	2.4	2.3	1.9	2.8	-0.6	2.4	October
1.9	3.9	0.3	2.7	3.1	2.1	2.1	1.9	2.6	-0.8	2.1	November

EXPLANATORY NOTES

METHODOLOGY

The consumer price indices given here are the non-harmonised national indices which have different names in each country*. As far as trends are concerned, the general index published by EUROSTAT always corresponds to the general index published by the country. The component items of this general index are groups of national indices aggregated according to a harmonised classification conforming to the ESA (European System of Integrated Economic Accounts). For these groups, the price trends correspond to the trends noted by the national indices for the same classification field. The field covered by the general index varies according to country; as regards the population concerned (specific income bracket, certain socio-professional categories or total households), the geographical areas used (capital, urban areas, country as a whole, etc.) or method for seasonal adjustments. A fixed system is used in some countries, whereas in others a chain system is used (variable weightings). The reference years used at national level for the indices vary according to country. For ease of comparison, EUROSTAT has chosen 1985 as the common year for the presentation of these indices.

* **NB** : It should be noted that the figures in this publication are based on national methodologies. Therefore they may not be fully comparable one with another. The Member States of the European Union are currently working on a harmonisation project.

THE CALCULATION OF THE EUR15 INDEX

The EUR15 index as calculated by EUROSTAT is a weighted average of national price indices. The weight used is the proportion of each country in the final consumption of households for EUR15. The values of this consumption in national currency are converted into purchasing power standard (PPS); for this purpose the purchasing power parities of the G.D.P. are used. Up to 1990 purchasing power parities are those which result from the 1990 enquiry, extrapolated by using the implicate price index from the national accounts. Starting from 1990 onwards the purchasing power parities are calculated each year. The index calculated is a chain index of the "Laspeyres" type with weights changing each year. However, the weights are lagged by two years since the national accounts data needed become available only after two years. For example, the weights used for 1995 are those of 1993, for 1994 those of 1992. Moreover, national accounts data are often revised leading to revisions of the consumption weights. In order to avoid continuous modifications in the EUR15 index for previous periods, EUROSTAT has decided to "freeze" the weights which are used. Thus the EUR15 index will not be affected by revisions of the national accounts. However when Member States carry out major revisions in the price series for past years, EUR15 data will be calculated using these new series.

BELGIQUE / BELGIË

**Moniteur belge/
Belgisch Staatsblad**
Rue de Louvain 42/Leuvenseweg 42
B-1000 Bruxelles/B-1000 Brussel
Tél. (02) 512 00 26
Fax (02) 511 01 84

Jean De Lannoy
Avenue du Roi 202/Koningslaan 202
B-1060 Bruxelles/B-1060 Brussel
Tél. (02) 538 51 69
Fax (02) 538 08 41

Autres distributeurs/
Overige verkooppunten:

**Librairie européenne/
Europese boekhandel**
Rue de la Loi 244/Wetstraat 244
B-1040 Bruxelles/B-1040 Brussel
Tél. (02) 231 04 35
Fax (02) 735 08 60

Document delivery:

Credoc
Rue de la Montagne 34/Bergstraat 34
Boîte 11/Bus 11
B-1000 Bruxelles/B-1000 Brussel
Tél. (02) 511 69 41
Fax (02) 513 31 95

DANMARK

J. H. Schultz Information A/S
Herstedvang 10-12
DK-2620 Albertslund
Tlf. 43 63 23 00
Fax (Sales) 43 63 19 69
Fax (Management) 43 63 19 49

DEUTSCHLAND

Bundesanzeiger Verlag
Postfach 10 05 34
D-50445 Köln
Tel. (02 21) 20 29-0
Fax (02 21) 2 02 92 78

GREECE/ΕΛΛΑΔΑ

G.C. Eleftheroudakis SA
International Bookstore
Nikis Street 4
GR-10563 Athens
Tel. (01) 322 63 23
Fax 323 98 21

ESPAÑA

Mundi-Prensa Libros, SA
Castelló, 37
E-28001 Madrid
Tel. (91) 431 33 99 (Libros)
431 32 22 (Suscripciones)
435 36 37 (Dirección)
Fax (91) 575 39 98

Boletín Oficial del Estado
Trafalgar, 27-29
E-28071 Madrid
Tel. (91) 538 22 95
Fax (91) 538 23 49

Sucursal:

Librería Internacional AEDOS
Consejo de Ciento, 391
E-08009 Barcelona
Tel. (93) 488 34 92
Fax (93) 487 76 59

**Librería de la Generalitat
de Catalunya**
Rambla dels Estudis, 118 (Palau Moja)
E-08002 Barcelona
Tel. (93) 302 68 35
Tel. (93) 302 64 62
Fax (93) 302 12 99

FRANCE

**Journal officiel
Service des publications
des Communautés européennes**
26, rue Desaix
F-75727 Paris Cedex 15
Tél. (1) 40 58 77 01/31
Fax (1) 40 58 77 00

IRELAND

Government Supplies Agency
4-5 Harcourt Road
Dublin 2
Tel. (1) 66 13 111
Fax (1) 47 52 760

ITALIA

Licosa Spa
Via Duca di Calabria 1/1
Casella postale 552
I-50125 Firenze
Tel. (055) 64 54 15
Fax 64 12 57

GRAND-DUCHÉ DE LUXEMBOURG

Messageries du livre
5, rue Raiffeisen
L-2411 Luxembourg
Tél. 40 10 20
Fax 49 06 61

NEDERLAND

SDU Servicecentrum Uitgeverijen
Postbus 20014
2500 EA 's-Gravenhage
Tel. (070) 37 89 880
Fax (070) 37 89 783

ÖSTERREICH

**Manz'sche Verlags-
und Universitätsbuchhandlung**
Kohlmarkt 16
A-1014 Wien
Tel. (1) 531 610
Fax (1) 531 61-181

Document delivery:

Wirtschaftskammer
Wiedner Hauptstraße
A-1045 Wien
Tel. (0222) 50105-4356
Fax (0222) 50206-297

PORTUGAL

Imprensa Nacional — Casa da Moeda, EP
Rua Marquês Sá da Bandeira, 16-A
P-1099 Lisboa Codex
Tel. (01) 353 03 99
Fax (01) 353 02 94/384 01 32

**Distribuidora de Livros
Bertrand, Ld.^a**

Grupo Bertrand, SA
Rua das Terras dos Vales, 4-A
Apartado 37
P-2700 Amadora Codex
Tel. (01) 49 59 050
Fax 49 60 255

SUOMI/FINLAND

Akateeminen Kirjakauppa
Akademiska Bokhandeln
Pohjoisesplanadi 39 / Norra esplanaden 39
PL / PB 128
FIN-00101 Helsinki / Helsingfors
Tel. (90) 121 4322
Fax (90) 121 44 35

SVERIGE

BTJ AB
Traktorvägen 11
Box 200
S-221 00 Lund
Tel. (046) 18 00 00
Fax (046) 18 01 25

UNITED KINGDOM

HMSO Books (Agency section)
HMSO Publications Centre
51 Nine Elms Lane
London SW8 5DR
Tel. (0171) 873 9090
Fax (0171) 873 8463

ICELAND

**BOKABUD
LARUSAR BLÖNDAL**
Skólavörðustíg, 2
IS-101 Reykjavík
Tel. 551 56 50
Fax 552 55 60

NORGE

NIC Info a/s
Boks 6512 Etterstad
0606 Oslo
Tel. (22) 57 33 34
Fax (22) 68 19 01

SCHWEIZ/SUISSE/SVIZZERA

OSEC
Stampfenbachstraße 85
CH-8035 Zürich
Tel. (01) 365 54 49
Fax (01) 365 54 11

BÄLGARIJA

Europress Klassica BK Ltd
66, bd Vitosha
BG-1463 Sofia
Tel./Fax (2) 52 74 75

ČESKÁ REPUBLIKA

NIS ČR
Havelkova 22
CZ-130 00 Praha 3
Tel./Fax (2) 24 22 94 33

HRVATSKA

Mediatrade
P. Hatza 1
HR-4100 Zagreb
Tel./Fax (041) 43 03 92

MAGYARORSZÁG

Euro-Info-Service
Europá Ház
Margitsziget
H-1138 Budapest
Tel./Fax (1) 111 60 61, (1) 111 62 16

POLSKA

Business Foundation
ul. Krucza 38/42
PL-00-512 Warszawa
Tel. (2) 621 99 93, 628 28 82
International Fax&Phone (0-39) 12 00 77

ROMÂNIA

Euromedia
65, Strada Dionisie Lupu
RO-70184 Bucuresti
Tel./Fax 1-31 29 646

RUSSIA

CCCEC
9,60-letiya Oktyabrya Avenue
117312 Moscow
Tel./Fax (095) 135 52 27

SLOVAKIA

**Slovak Technical
Library**
Nám. slobody 19
SLO-812 23 Bratislava 1
Tel. (7) 52 204 52
Fax (7) 52 957 85

CYPRUS

**Cyprus Chamber of Commerce
and Industry**
Chamber Building
38 Grivas Dhigenis Ave
3 Deligiorgis Street
PO Box 1455
Nicosia
Tel. (2) 44 95 00, 46 23 12
Fax (2) 36 10 44

MALTA

Miller Distributors Ltd
PO Box 25
Malta International Airport LQA 05 Malta
Tel. 66 44 88
Fax 67 67 99

TÜRKIYE

Pres AS
Dünya Infotel
TR-80050 Tünel-Istanbul
Tel. (1) 251 91 90/251 96 96
Fax (1) 251 91 97

ISRAEL

Roy International
17, Shimon Hatarssi Street
P.O.B. 13056
61130 Tel Aviv
Tel. (3) 546 14 23
Fax (3) 546 14 42

Sub-agent for the Palestinian Authority:

INDEX Information Services
PO Box 19502
Jerusalem
Tel. (2) 27 16 34
Fax (2) 27 12 19

**EGYPT/
MIDDLE EAST**

Middle East Observer
41 Sherif St.
Cairo
Tel/Fax (2) 393 97 32

**UNITED STATES OF AMERICA/
CANADA**

UNIPUB
4611-F Assembly Drive
Lanham, MD 20706-4391
Tel. Toll Free (800) 274 48 88
Fax (301) 459 00 56

CANADA

Subscriptions only
Uniquement abonnements

Renouf Publishing Co. Ltd
1294 Algoma Road
Ottawa, Ontario K1B 3W8
Tel. (613) 741 43 33
Fax (613) 741 54 39

AUSTRALIA

Hunter Publications
58A Gipps Street
Collingwood
Victoria 3066
Tel. (3) 9417 53 61
Fax (3) 9419 71 54

JAPAN

Procurement Services Int. (PSI-Japan)
Kyoku Dome Postal Code 102
Tokyo Kojimachi Post Office
Tel. (03) 32 34 69 21
Fax (03) 32 34 69 15

Sub-agent:

**Kinokuniya Company Ltd
Journal Department**
PO Box 55 Chitose
Tokyo 156
Tel. (03) 34 39-0124

SOUTH and EAST ASIA

Legal Library Services Ltd
Orchard
PO Box 0523
Singapore 9123
Tel. 243 24 98
Fax 243 24 79

SOUTH AFRICA

Safto
5th Floor, Export House
Cnr Maude & West Streets
Sandton 2146
Tel. (011) 883-3737
Fax (011) 883-6569

**ANDERE LÄNDER
OTHER COUNTRIES
AUTRES PAYS**

**Office des publications officielles
des Communautés européennes**
2, rue Mercier
L-2985 Luxembourg
Tél. 29 29-1
Télex PUBOF LU 1324 b
Fax 48 85 73, 48 68 17

Price (excl. VAT) in Luxembourg: Single copy ECU 9 • Subscription ECU 77



OFICINA DE PUBLICACIONES OFICIALES DE LAS COMUNIDADES EUROPEAS
KONTORET FOR DE EUROPÆISKE FÆLLESSKABERS OFFICIELLE PUBLIKATIONER
AMT FÜR AMTLICHE VERÖFFENTLICHUNGEN DER EUROPÄISCHEN GEMEINSCHAFTEN
ΥΠΗΡΕΣΙΑ ΕΠΙΣΗΜΩΝ ΕΚΔΟΣΕΩΝ ΤΩΝ ΕΥΡΩΠΑΪΚΩΝ ΚΟΙΝΟΤΗΤΩΝ
OFFICE FOR OFFICIAL PUBLICATIONS OF THE EUROPEAN COMMUNITIES
OFFICE DES PUBLICATIONS OFFICIELLES DES COMMUNAUTÉS EUROPÉENNES
UFFICIO DELLE PUBBLICAZIONI UFFICIALI DELLE COMUNITÀ EUROPEE
BUREAU VOOR OFFICIELE PUBLIKATIES DER EUROPESE GEMEENSCHAPPEN
SERVIÇO DAS PUBLICAÇÕES OFICIAIS DAS COMUNIDADES EUROPEIAS



CA-CB-95-012-EN-C

L - 2985 Luxembourg