

# Consumer price index

1  1996 Monthly

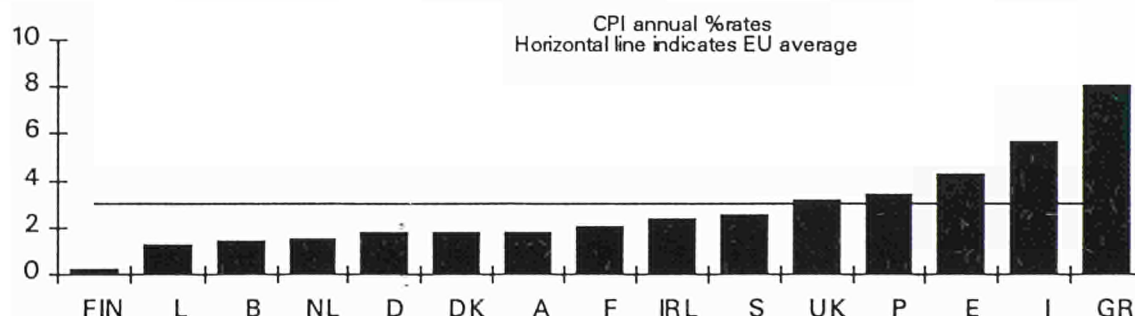
## PRICES: EU ANNUAL INFLATION STABLE AT 3.0% IN DECEMBER

The annual inflation rate for the EU as a whole remained unchanged 3.0% during the last three months. A year ago, in December 1994, the corresponding rate was also 3.0%. It stood at 5.7% in 1990, 4.7% in 1991, 3.6% in 1992 and 3.4% in 1993 (December of each year in relation to December the previous year). The figures show clearly that inflation in the EU has fallen steadily over the last six years.

The monthly index rose by 0.2% between November and December. As usually, the variation between these two last months was in general very small; some Member States show a decline in their index : Denmark, Austria and Finland (-0.1%), Portugal (-0.2%), Sweden (-0.3%) and the Netherlands (-0.4%). The Belgian index is unchanged. Slight increases are reported in France and Luxembourg (0.1%), Italy (0.2%), Germany and Spain (0.3%); furthermore, the index of the United Kingdom increased by 0.6% and that of Greece by 1.0% in December.

In ascending order of current inflation, the annual rates of the Member States for December 1995 and those for the corresponding period of 1994 are as follows :

	<u>December 1995</u>	<u>December 1994</u>		<u>December 1995</u>	<u>December 1994</u>
	December 1994	December 1993		December 1994	December 1993
Finland	0.3 %	1.6 %	Ireland	2.4 %	2.4 %
Luxembourg	1.3 %	2.0 %	Sweden	2.6 %	2.6 %
Belgium	1.5 %	1.9 %	United Kingdom	3.2 %	2.9 %
Netherlands	1.6 %	2.6 %	Portugal	3.4 %	4.0 %
Germany	1.8 % *	2.5 % *	Spain	4.3 %	4.3 %
Denmark	1.8 %	2.3 %	Italy	5.7 %p	4.0 %
Austria	1.8 %	2.6 %	Greece	8.1 %	10.8 %
France	2.1 %	1.6 %	EUR-15	3.0 %p	3.0 %



The corresponding rates for some other countries are : Canada 1.8%, Japan -0.5%, Iceland 2.0%, Norway 2.2% and Switzerland 1.9%. (U.S.A. : not available).

\* The rates for Germany are those for the whole country, including the new "Länder" and East-Berlin. For technical reasons the data for Germany at Table 1 on page 4 continue to reflect price trends in the old "Länder" only.

p = provisional



OFICINA ESTADÍSTICA DE LAS COMUNIDADES EUROPEAS  
DE EUROPÆISKE FÆLLESSKABERS STATISTISKE KONTOR  
STATISTISCHES AMT DER EUROPÄISCHEN GEMEINSCHAFTEN  
ΣΤΑΤΙΣΤΙΚΗ ΥΠΗΡΕΣΙΑ ΤΩΝ ΕΥΡΩΠΑΪΚΩΝ ΚΟΙΝΟΤΗΤΩΝ  
STATISTICAL OFFICE OF THE EUROPEAN COMMUNITIES  
OFFICE STATISTIQUE DES COMMUNAUTÉS EUROPÉENNES  
ISTITUTO STATISTICO DELLE COMUNITÀ EUROPEE  
BUREAU VOOR DE STATISTIEK DER EUROPESE GEMEENSCHAPPEN  
SERVIÇO DE ESTATÍSTICA DAS COMUNIDADES EUROPEIAS

L-2920 Luxembourg — Tél. 43 01-1 — Télex COMEUR LU 3423  
B-1049 Bruxelles, rue de la Loi 200 — Tél. 299 11 11

The information included in this bulletin has been taken from the Cronos databank, which is accessible via the different host companies. For all information about these host companies contact Eurostat in Luxembourg, tel. 4301-34567, fax 436404.

To obtain specifications of the principal characteristics of the series contained in this bulletin contact Luxembourg:

**Mr Nijenhuis,**

**Tel. 4301-33202**

**Fax 4301-33989**

VERBRAUCHERPREISE  
GESAMTINDEX  
VERÄNDERUNG % T/T-12

CONSUMER PRICES  
GENERAL INDEX  
VARIATION % T/T-12

PRIX A LA CONSOMMATION  
INDICE GENERAL  
VARIATION % T/T-12

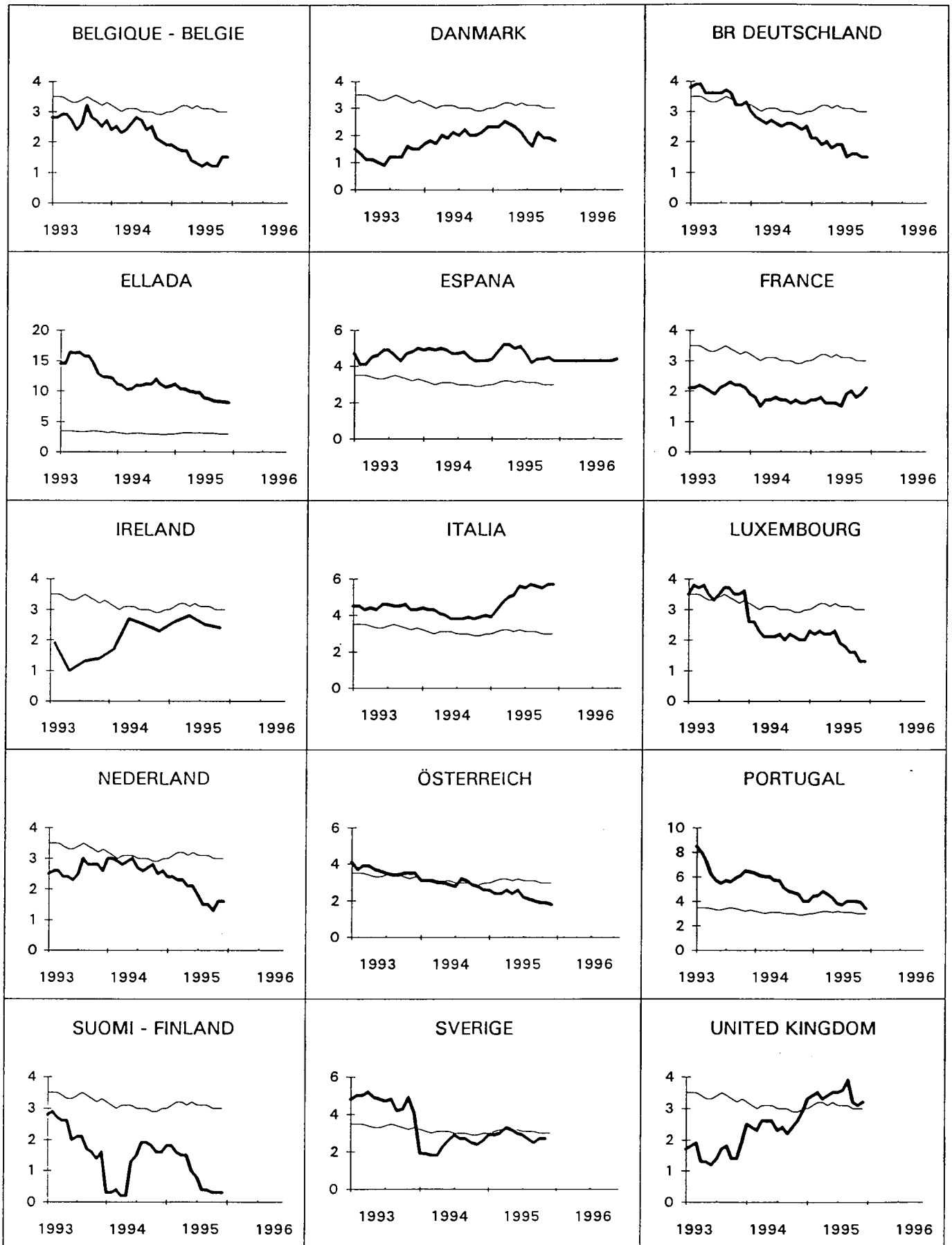


TABLE I

	CONSUMER PRICES										GENERAL INDEX		
	EUR 15	B	DK	D	GR	E	F	IRL	I	L	NL	1985 = 100	
Annual average	Price indice												
1992	135.1	117.4	126.7	115.3	308.1	153.5	123.0	125.1	147.3	115.9	111.7		
1993	139.7	120.6	128.3	119.5	352.6	160.6	125.6	126.9	153.8	120.1	114.6		
1994	143.9	123.5	130.9	122.6	391.1	168.1	127.8	129.8	160.0	122.7	117.8		
1995	148.3	125.3	133.6	124.8	427.4	176.0	129.9	133.2	168.3	125.1	120.1		
1994													
December	145.5	124.0	132.0	123.4	411.9	171.1	128.3	:	162.8	124.1	118.5		
1995													
January	145.9	124.5	132.1	123.7	410.2	172.9	128.7	:	163.4	124.5	118.8		
February	146.7	124.8	132.7	124.3	408.5	173.7	129.2	131.8	164.8	124.7	119.4		
March	147.3	124.7	133.1	124.3	420.2	174.8	129.5	:	165.8	124.8	120.0		
April	147.9	124.9	133.5	124.6	425.2	175.7	129.6	:	166.6	124.8	120.2		
May	148.2	124.9	134.0	124.7	428.1	175.7	129.9	133.1	167.5	125.0	120.0		
June	148.6	125.0	133.8	125.1	431.9	176.0	129.9	:	168.7	125.1	119.8		
July	148.5	125.7	133.2	125.4	421.8	176.0	129.6	:	169.0	125.2	119.8		
August	148.9	126.0	133.4	125.2	422.1	176.4	130.2	133.8	169.5	125.1	120.0		
September	149.3	125.7	134.2	125.1	434.8	177.2	130.7	:	169.9	125.3	121.0		
October	149.3	125.4	134.2	125.0	439.7	177.5	130.8	:	170.6	125.5	120.9		
November	149.5p	125.8	134.5	125.0	440.7	178.0	130.9	133.9	171.6p	125.6	120.9		
December	149.9p	125.8	134.4	125.3	445.2	178.4	131.0	:	172.0p	125.6	120.4		
1994	Rate of increase over one month (Ireland 3 Months)										(T/T-1)		
Dec./Nov.	0.2	0.0	0.0	0.3	1.1	0.5	-0.1	:	0.2	0.1	-0.4		
1995													
Jan./Dec.	0.3	0.4	0.1	0.2	-0.4	1.1	0.3	:	0.4	0.4	0.2		
Feb./Jan.	0.5	0.3	0.4	0.5	-0.4	0.4	0.4	0.8	0.8	0.2	0.5		
March/Feb.	0.4	-0.1	0.3	0.0	2.9	0.6	0.3	:	0.6	0.1	0.5		
April/March	0.4	0.2	0.3	0.2	1.2	0.5	0.1	:	0.5	0.0	0.2		
May/April	0.2	0.0	0.4	0.1	0.7	0.0	0.2	1.0	0.6	0.2	-0.2		
June/May	0.3	0.1	-0.2	0.4	0.9	0.2	0.0	:	0.7	0.2	-0.2		
July/June	-0.1	0.5	-0.5	0.3	-2.3	0.0	-0.2	:	0.2	0.1	0.0		
August/July	0.2	0.3	0.2	-0.2	0.1	0.3	0.5	0.5	0.3	-0.1	0.2		
Sept./Augu	0.3	-0.3	0.6	-0.1	3.0	0.4	0.4	:	0.2	0.1	0.8		
Oct./Sept.	0.0	-0.2	0.1	-0.1	1.1	0.2	0.1	:	0.4	0.2	-0.1		
Nov./Oct.	0.2p	0.3	0.2	0.0	0.2	0.3	0.1	0.1	0.6p	0.0	0.0		
Dec./Nov.	0.2p	0.0	-0.1	0.3	1.0	0.3	0.1	:	0.2p	0.1	-0.4		
1994	Rate of increase over 12 months										(T/T-12)		
December	3.0	1.9	2.3	2.5	10.8	4.3	1.6	:	4.0	2.0	2.6		
1995													
January	3.0	1.9	2.3	2.1	11.1	4.4	1.7	:	3.9	2.3	2.5		
February	3.1	1.8	2.3	2.1	10.4	4.8	1.7	2.6	4.3	2.2	2.4		
March	3.2	1.7	2.5	1.9	10.3	5.2	1.8	:	4.7	2.3	2.3		
April	3.2	1.7	2.4	2.0	9.9	5.2	1.6	:	5.0	2.2	2.3		
May	3.1	1.4	2.4	1.8	9.8	5.0	1.6	2.8	5.1	2.2	2.1		
June	3.2	1.3	2.1	1.9	9.7	5.1	1.6	:	5.6	2.3	2.2		
July	3.1	1.2	1.8	1.9	8.9	4.7	1.5	:	5.5	1.9	1.8		
August	3.1	1.3	1.6	1.5	8.7	4.3	1.9	2.5	5.7	1.8	1.5		
September	3.1	1.2	2.1	1.6	8.4	4.4	2.0	:	5.6	1.6	1.5		
October	3.0	1.2	1.9	1.6	8.3	4.4	1.8	:	5.5	1.6	1.3		
November	3.0p	1.5	1.9	1.5	8.2	4.3	1.9	2.4	5.7p	1.3	1.6		
December	3.0p	1.5	1.8	1.5	8.1	4.3	2.1	:	5.7p	1.3	1.6		

TABLE II

CONSUMER PRICES					GENERAL INDEX						
A	P	FIN	S	UK	IS	N	CH	USA	JAP	CAN	
					Price indice			1985 = 100			Annual average
119.7	206.7	136.7	151.1	146.4	278.1	143.3	124.6	130.5	112.3	133.4	1992
124.0	220.0	139.7	158.2	148.7	289.5	146.5	128.7	134.3	113.8	135.8	1993
127.7	231.5	141.2	161.6	152.4	294.0	148.6	129.8	137.8	114.6	136.1	1994
130.6	241.1	142.6	165.7	157.6	298.8	152.2	132.2	:	114.4	139.0	1995
											1994
128.1	234.7	142.0	162.9	154.3	295.0	149.7	129.9	139.2	114.7	137.0	December
											1995
129.1	237.5	141.9	163.5	154.3	297.2	150.5	130.8	139.8	114.7	137.6	January
129.7	239.2	142.4	164.1	155.3	297.6	151.0	132.0	140.3	114.2	138.2	February
130.1	240.4	142.4	164.8	155.9	297.0	151.9	132.0	140.8	114.1	138.5	March
130.2	241.3	142.5	165.9	157.5	296.7	152.0	132.2	141.3	114.6	138.9	April
130.2	241.1	142.6	166.1	158.1	297.2	152.2	132.0	141.5	114.9	139.2	May
130.7	240.4	143.1	165.9	158.4	297.6	152.6	132.2	141.8	114.8	139.2	June
131.6	240.4	143.0	165.7	157.6	298.4	152.5	132.1	141.8	114.0	139.5	July
132.3	241.6	142.8	165.5	158.5	299.6	152.2	132.5	142.2	114.2	139.3	August
131.1	242.1	142.9	166.6	159.2	300.7	153.0	132.7	142.5	115.0	139.4	September
130.7	243.0	142.9	167.1	158.4	302.1	153.0	132.5	142.9	114.6	139.3	October
130.6	243.2	142.5	167.0	158.4	301.0	152.9	132.4	142.8	114.1	139.6	November
130.5	242.7	142.4	166.5	159.3	300.8	152.9	132.4	:	114.1	139.4	December
					Rate of increase over one month (Ireland 3 Months (T/T-1))						1994
0.0	0.3	-0.1	-0.2	0.5	0.1	0.0	0.0	0.0	-0.3	0.2	Dec./Nov.
											1995
0.7	1.2	-0.1	0.4	0.0	0.8	0.5	0.7	0.4	0.0	0.4	Jan./Dec.
0.5	0.7	0.4	0.4	0.6	0.1	0.4	0.9	0.4	-0.4	0.5	Feb./Jan.
0.3	0.5	0.0	0.4	0.4	-0.2	0.6	0.0	0.3	-0.1	0.2	March/Feb.
0.1	0.4	0.1	0.7	1.0	-0.1	0.1	0.1	0.3	0.4	0.3	April/March
0.0	-0.1	0.1	0.1	0.4	0.2	0.1	-0.2	0.2	0.3	0.2	May/April
0.4	-0.3	0.4	-0.1	0.1	0.1	0.3	0.2	0.2	-0.1	0.0	June/May
0.7	0.0	-0.1	-0.1	-0.5	0.3	-0.1	-0.1	0.0	-0.7	0.2	July/June
0.5	0.5	-0.2	-0.1	0.5	0.4	-0.2	0.3	0.3	0.2	-0.2	August/July
-0.9	0.2	0.1	0.7	0.5	0.4	0.6	0.1	0.2	0.7	0.1	Sept./Augu
-0.3	0.4	0.0	0.3	-0.5	0.5	0.0	-0.1	0.3	-0.4	-0.1	Oct./Sept.
-0.1	0.1	-0.3	0.0	0.0	-0.3	-0.1	-0.1	-0.1	-0.4	0.2	Nov./Oct.
-0.1	-0.2	-0.1	-0.3	0.6	-0.1	0.0	0.0	:	0.0	-0.2	Dec./Nov.
					Rate of increase over 12 months (T/T-12)						1994
2.6	4.0	1.6	2.6	2.9	0.5	1.9	0.4	2.7	0.7	0.2	December
											1995
2.6	4.4	1.8	2.9	3.3	1.7	2.6	1.0	2.8	0.6	0.6	January
2.4	4.6	1.8	2.9	3.4	1.7	2.6	1.5	2.9	0.2	1.8	February
2.4	4.8	1.6	3.0	3.5	1.4	2.7	1.5	2.9	-0.4	2.2	March
2.6	4.6	1.5	3.3	3.3	1.1	2.7	1.7	3.1	-0.2	2.5	April
2.4	4.3	1.5	3.2	3.4	1.3	2.7	2.0	3.2	0.0	2.9	May
2.6	3.8	1.0	3.0	3.5	1.3	2.7	2.1	3.0	0.3	2.7	June
2.2	3.7	0.8	2.9	3.5	1.4	2.4	2.0	2.8	0.1	2.5	July
2.1	4.1	0.5	2.7	3.6	1.8	2.2	1.9	2.6	-0.2	2.3	August
2.0	4.0	0.4	2.5	3.9	1.8	2.4	2.0	2.5	0.2	2.3	September
1.9	4.0	0.3	2.7	3.2	2.4	2.3	1.9	2.8	-0.7	2.4	October
1.9	3.9	0.3	2.7	3.1	2.1	2.1	1.9	2.6	-0.7	2.1	November
1.8	3.4	0.3	2.6	3.2	2.0	2.2	1.9	:	-0.5	1.8	December

## EXPLANATORY NOTES

### METHODOLOGY

The consumer price indices given here are the non-harmonised national indices which have different names in each country\*. As far as trends are concerned, the general index published by EUROSTAT always corresponds to the general index published by the country. The component items of this general index are groups of national indices aggregated according to a harmonised classification conforming to the ESA (European System of Integrated Economic Accounts). For these groups, the price trends correspond to the trends noted by the national indices for the same classification field. The field covered by the general index varies according to country; as regards the population concerned (specific income bracket, certain socio-professional categories or total households), the geographical areas used (capital, urban areas, country as a whole, etc.) or method for seasonal adjustments. A fixed system is used in some countries, whereas in others a chain system is used (variable weightings). The reference years used at national level for the indices vary according to country. For ease of comparison, EUROSTAT has chosen 1985 as the common year for the presentation of these indices.

\* NB : It should be noted that the figures in this publication are based on national methodologies. Therefore they may not be fully comparable one with another. The Member States of the European Union are currently working on a harmonisation project.

### THE CALCULATION OF THE EUR15 INDEX

The EUR15 index as calculated by EUROSTAT is a weighted average of national price indices. The weight used is the proportion of each country in the final consumption of households for EUR15. The values of this consumption in national currency are converted into purchasing power standard (PPS); for this purpose the purchasing power parities of the G.D.P. are used. Up to 1990 purchasing power parities are those which result from the 1990 enquiry, extrapolated by using the implicate price index from the national accounts. Starting from 1990 onwards the purchasing power parities are calculated each year. The index calculated is a chain index of the "Laspeyres" type with weights changing each year. However, the weights are lagged by two years since the national accounts data needed become available only after two years. For example, the weights used for 1995 are those of 1993, for 1994 those of 1992. Moreover, national accounts data are often revised leading to revisions of the consumption weights. In order to avoid continuous modifications in the EUR15 index for previous periods, EUROSTAT has decided to "freeze" the weights which are used. Thus the EUR15 index will not be affected by revisions of the national accounts. However when Member States carry out major revisions in the price series for past years, EUR15 data will be calculated using these new series.

**BELGIQUE / BELGIË**

**Moniteur belge/  
Belgisch Staatsblad**  
Rue de Louvain 42/Leuvenseweg 42  
B-1000 Bruxelles/B-1000 Brussel  
Tél. (02) 512 00 26  
Fax (02) 511 01 84

**Jean De Lannoy**  
Avenue du Roi 202/Koningslaan 202  
B-1060 Bruxelles/B-1060 Brussel  
Tél. (02) 538 51 69  
Fax (02) 538 08 41

Autres distributeurs/  
Overige verkooppunten:

**Librairie européenne/  
Europese boekhandel**  
Rue de la Loi 244/Wetstraat 244  
B-1040 Bruxelles/B-1040 Brussel  
Tél. (02) 231 04 35  
Fax (02) 735 08 60

Document delivery:

**Credoc**  
Rue de la Montagne 34/Bergstraat 34  
Boite 11/Bus 11  
B-1000 Bruxelles/B-1000 Brussel  
Tél. (02) 511 69 41  
Fax (02) 513 31 95

**DANMARK**

**J. H. Schultz Information A/S**  
Herstedvang 10-12  
DK-2620 Albertslund  
Tlf. 43 63 23 00  
Fax (Sales) 43 63 19 69  
Fax (Management) 43 63 19 49

**DEUTSCHLAND**

**Bundesanzeiger Verlag**  
Postfach 10 05 34  
D-50445 Köln  
Tel. (02 21) 20 29-0  
Fax (02 21) 2 02 92 78

**GREECE/ΕΛΛΑΔΑ**

**G.C. Eleftheroudakis SA**  
International Bookstore  
Nikis Street 4  
GR-10563 Athens  
Tel. (01) 322 63 23  
Fax 323 98 21

**ESPAÑA**

**Mundi-Prensa Libros, SA**  
Castelló, 37  
E-28001 Madrid  
Tel. (91) 431 33 99 (Libros)  
431 32 22 (Suscripciones)  
435 36 37 (Dirección)  
Fax (91) 575 39 98

**Boletín Oficial del Estado**

Trafalgar, 27-29  
E-28071 Madrid  
Tel. (91) 538 22 95  
Fax (91) 538 23 49

Sucursal:

**Librería Internacional AEDOS**

Consejo de Ciento, 391  
E-08009 Barcelona  
Tel. (93) 488 34 92  
Fax (93) 487 76 59

**Librería de la Generalitat  
de Catalunya**

Rambra dels Estudis, 118 (Palau Moja)  
E-08002 Barcelona  
Tel. (93) 302 68 35  
Tel. (93) 302 64 62  
Fax (93) 302 12 99

**FRANCE**

**Journal officiel  
Service des publications  
des Communautés européennes**

26, rue Desaix  
F-75727 Paris Cedex 15  
Tél. (1) 40 58 77 01/31  
Fax (1) 40 58 77 00

**IRELAND**

**Government Supplies Agency**  
4-5 Harcourt Road  
Dublin 2  
Tel. (1) 66 13 111  
Fax (1) 47 52 760

**ITALIA**

**Licosa SpA**  
Via Duca di Calabria 1/1  
Casella postale 552  
I-50125 Firenze  
Tel. (055) 64 54 15  
Fax 64 12 57

**GRAND-DUCHÉ DE LUXEMBOURG**

**Messageries du livre**  
5, rue Raiffeisen  
L-2411 Luxembourg  
Tél. 40 10 20  
Fax 49 06 61

**NEDERLAND**

**SDU Servicecentrum Uitgeverijen**  
Postbus 20014  
2500 EA 's-Gravenhage  
Tel. (070) 37 89 880  
Fax (070) 37 89 783

**ÖSTERREICH**

**Manz'sche Verlags-  
und Universitätsbuchhandlung**  
Kohlmarkt 16  
A-1014 Wien  
Tel. (1) 531 610  
Fax (1) 531 61-181

Document delivery:

**Wirtschaftskammer**

Wiedner Hauptstraße  
A-1045 Wien  
Tel. (0222) 50105-4356  
Fax (0222) 50206-297

**PORTUGAL**

**Imprensa Nacional — Casa da Moeda, EP**  
Rua Marquês Sá da Bandeira, 16-A  
P-1099 Lisboa Codex  
Tel. (01) 353 03 99  
Fax (01) 353 02 94/384 01 32

**Distribuidora de Livros  
Bertrand, Ld.ª**

**Grupo Bertrand, SA**  
Rua das Terras dos Vales, 4-A  
Apartado 37  
P-2700 Amadora Codex  
Tel. (01) 49 59 050  
Fax 49 60 255

**SUOMI/FINLAND**

**Akateeminen Kirjakauppa**  
Akademiska Bokhandeln  
Pohjoisesplanadi 39 / Norra esplanaden 39  
PL / PB 128  
FIN-00101 Helsinki / Helsingfors  
Tel. (90) 121 4322  
Fax (90) 121 44 35

**SVERIGE**

**BTJ AB**  
Traktorvägen 11  
Box 200  
S-221 00 Lund  
Tel. (046) 18 00 00  
Fax (046) 18 01 25

**UNITED KINGDOM**

**HMSO Books (Agency section)**  
HMSO Publications Centre  
51 Nine Elms Lane  
London SW8 5DR  
Tel. (0171) 873 9090  
Fax (0171) 873 8463

**ICELAND**

**BOKABUD  
LARUSAR BLÖNDAL**  
Skólavörðustíg, 2  
IS-101 Reykjavík  
Tel. 551 56 50  
Fax 552 55 60

**NORGE**

**NIC Info a/s**  
Boks 6512 Etterstad  
0606 Oslo  
Tel. (22) 57 33 34  
Fax (22) 68 19 01

**SCHWEIZ/SUISSE/SVIZZERA**

**OSEC**  
Stampfenbachstraße 85  
CH-8035 Zürich  
Tel. (01) 365 54 49  
Fax (01) 365 54 11

**BÄLGARIJA**

**Europress Klassica BK Ltd**  
66, bd Vitosha  
BG-1463 Sofia  
Tel./Fax (2) 52 74 75

**ČESKÁ REPUBLIKA**

**NIS ČR**  
Havelkova 22  
CZ-130 00 Praha 3  
Tel./Fax (2) 24 22 94 33

**HRVATSKA**

**Mediatrade**  
P. Hatza 1  
HR-4100 Zagreb  
Tel./Fax (041) 43 03 92

**MAGYARORSZÁG**

**Euro-Info-Service**  
Európa Ház  
Margitsziget  
H-1138 Budapest  
Tel./Fax (1) 111 60 61, (1) 111 62 16

**POLSKA**

**Business Foundation**  
ul. Krucza 38/42  
PL-00-512 Warszawa  
Tel. (2) 621 99 93, 628 28 82  
International Fax&Phone (0-39) 12 00 77

**ROMÂNIA**

**Euromedia**  
65, Strada Dionisie Lupu  
RO-70184 Bucuresti  
Tel./Fax 1-31 29 646

**RUSSIA**

**CCEC**  
9,60-letiya Oktyabrya Avenue  
117312 Moscow  
Tel./Fax (095) 135 52 27

**SLOVAKIA**

**Slovak Technical  
Library**  
Nám. slobody 19  
SLO-812 23 Bratislava 1  
Tel. (7) 52 204 52  
Fax (7) 52 957 85

**CYPRUS**

**Cyprus Chamber of Commerce  
and Industry**  
Chamber Building  
38 Grivas Dhigenis Ave  
3 Deligiorgis Street  
PO Box 1455  
Nicosia  
Tel. (2) 44 95 00, 46 23 12  
Fax (2) 36 10 44

**MALTA**

**Miller Distributors Ltd**  
PO Box 25  
Malta International Airport LQA 05 Malta  
Tel. 66 44 88  
Fax 67 67 99

**TÜRKIYE**

**Pres AS**  
Dünya Infotel  
TR-80050 Tünel-Istanbul  
Tel. (1) 251 91 90/251 96 96  
Fax (1) 251 91 97

**ISRAEL**

**Roy International**  
17, Shimon Hatarssi Street  
P.O.B. 13056  
61130 Tel Aviv  
Tel. (3) 546 14 23  
Fax (3) 546 14 42

Sub-agent for the Palestinian Authority:

**INDEX Information Services**

PO Box 19502  
Jerusalem  
Tel. (2) 27 16 34  
Fax (2) 27 12 19

**EGYPT/  
MIDDLE EAST**

**Middle East Observer**  
41 Sherif St.  
Cairo  
Tel./Fax (2) 393 97 32

**UNITED STATES OF AMERICA/  
CANADA**

**UNIPUB**

4611-F Assembly Drive  
Lanham, MD 20706-4391  
Tel. Toll Free (800) 274 48 88  
Fax (301) 459 00 56

**CANADA**

Subscriptions only  
Uniquement abonnements

**Renouf Publishing Co. Ltd**

1294 Algoma Road  
Ottawa, Ontario K1B 3W8  
Tel. (613) 741 43 33  
Fax (613) 741 54 39

**AUSTRALIA**

**Hunter Publications**

58A Gipps Street  
Collingwood  
Victoria 3066  
Tel. (3) 9417 53 61  
Fax (3) 9419 71 54

**JAPAN**

**Procurement Services Int. (PSI-Japan)**

Kyoku Dome Postal Code 102  
Tokyo Kojimachi Post Office  
Tel. (03) 32 34 69 21  
Fax (03) 32 34 69 15

Sub-agent:

**Kinokuniya Company Ltd  
Journal Department**

PO Box 55 Chitose  
Tokyo 156  
Tel. (03) 34 39-0124

**SOUTH and EAST ASIA**

**Legal Library Services Ltd**

Orchard  
PO Box 0523  
Singapore 9123  
Tel. 243 24 98  
Fax 243 24 79

**SOUTH AFRICA**

**Safto**

5th Floor, Export House  
Cnr Maude & West Streets  
Sandton 2146  
Tel. (011) 883-3737  
Fax (011) 883-6569

**ANDERE LANDER  
OTHER COUNTRIES  
AUTRES PAYS**

**Office des publications officielles  
des Communautés européennes**

2, rue Mercier  
L-2985 Luxembourg  
Tél. 29 29-1  
Télex PUBOF LU 1324 b  
Fax 48 85 73, 48 68 17

Price (excl. VAT) in Luxembourg: Single copy ECU 9 • Subscription ECU 77



OFICINA DE PUBLICACIONES OFICIALES DE LAS COMUNIDADES EUROPEAS  
KONTOR ET FOR DE EUROPÆISKE FÆLLESSKABERS OFFICIELLE PUBLIKATIONER  
AMT FÜR AMTLICHE VERÖFFENTLICHUNGEN DER EUROPÄISCHEN GEMEINSCHAFTEN  
ΥΠΗΡΕΣΙΑ ΕΠΙΣΗΜΩΝ ΕΚΔΟΣΕΩΝ ΤΩΝ ΕΥΡΩΠΑΪΚΩΝ ΚΟΙΝΟΤΗΤΩΝ  
OFFICE FOR OFFICIAL PUBLICATIONS OF THE EUROPEAN COMMUNITIES  
OFFICE DES PUBLICATIONS OFFICIELLES DES COMMUNAUTÉS EUROPÉENNES  
UFFICIO DELLE PUBBLICAZIONI UFFICIALI DELLE COMUNITÀ EUROPEE  
BUREAU VOOR OFFICIËLE PUBLIKATIES DER EUROPESE GEMEENSCHAPPEN  
SERVIÇO DAS PUBLICAÇÕES OFICIAIS DAS COMUNIDADES EUROPEIAS

L - 2985 Luxembourg

Catalogue number: CA-CB-96-001-EN-C