



# Consumer price index

5 □ 1996 Monthly

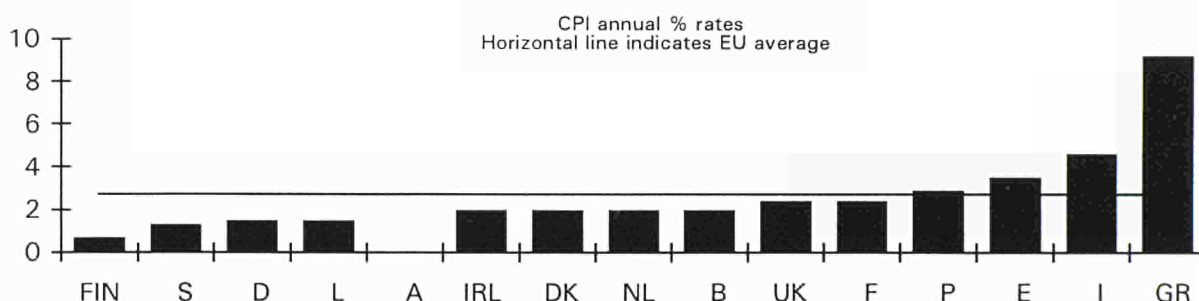
## PRICES: EU ANNUAL INFLATION STABLE AT 2.7% IN APRIL 1996

For the third consecutive month the annual inflation rate for the EU as a whole remained stable at 2.7% in April, the same as in February and March 1996. A year ago, in April 1995, the corresponding rate was 3.2%.

The index for EUR 15 rose by 0.4% between February and March. Over the month there were marked increases in the index of Greece (+1.3%), in Portugal (+0.9%), in the United Kingdom (+0.7%), in Spain (+0.6%), and in Italy (+0.5%). There were small to moderate increases in Denmark and Luxembourg (+0.3%), in Belgium, France, Finland and Sweden (+0.2%), in Germany and in the Netherlands (+0.1%). The result for Austria was not available at the closing date of this report.

In ascending order of current inflation, the annual rates of inflation of the Member States for April and those for the corresponding period a year ago are as follows:

	April 1996 April 1995	April 1995 April 1994		April 1996 April 1995	April 1995 April 1994
Finland	0.7 %	1.5 %	Belgium	2.0 %	1.7 %
Sweden	1.3 %	3.3 %	United Kingdom	2.4 %	3.3 %
Germany	1.5 %	2.0 %	France	2.4 %	1.6 %
Luxembourg	1.5 %	2.2 %	Portugal	2.9 %	4.6 %
Austria	: %	2.6 %	Spain	3.5 %	5.2 %
Ireland	2.0 % *	2.6 % *	Italy	4.6 % p	5.0 %
Denmark	2.0 %	2.4 %	Greece	9.2 %	9.9 %
Netherlands	2.0 %	2.3 %	EUR 15	2.7 % p	3.2 %



The corresponding annual rates of increase for some other countries are: Japan +0.3% (-0.2%), Switzerland +0.9% (+1.6%), Norway +1.0% (+2.6%), Canada +1.4% (+2.5%), Iceland +2.3% (+1.1%) and the USA +2.9% (3.1%).

\* The index for Ireland is quarterly; February 1996/1995 and February 1995/1994  
p = provisional



OFICINA ESTADÍSTICA DE LAS COMUNIDADES EUROPEAS  
DE EUROPÆISKE FÆLLESSKABERS STATISTISKE KONTOR  
STATISTISCHES AMT DER EUROPÄISCHEN GEMEINSCHAFTEN  
ΣΤΑΤΙΣΤΙΚΗ ΥΠΗΡΕΣΙΑ ΤΩΝ ΕΥΡΩΠΑΪΚΩΝ ΚΟΙΝΟΤΗΤΩΝ  
STATISTICAL OFFICE OF THE EUROPEAN COMMUNITIES  
OFFICE STATISTIQUE DES COMMUNAUTÉS EUROPÉENNES  
ISTITUTO STATISTICO DELLE COMUNITÀ EUROPEE  
BUREAU VOOR DE STATISTIEK DER EUROPESE GEMEENSCHAPPEN  
SERVIÇO DE ESTATÍSTICA DAS COMUNIDADES EUROPEIAS

L-2920 Luxembourg — Tél. 43 01-1 — Télex COMEUR LU 3423  
B-1049 Bruxelles, rue de la Loi 200 — Tél. 299 11 11

The information included in this bulletin has been taken from the Cronos databank, which is accessible via the different host companies. For all information about these host companies contact Eurostat in Luxembourg, tel. 4301-34567, fax 436404.

To obtain specifications of the principal characteristics of the series contained in this bulletin contact Luxembourg:

**Mr Eckefeldt,**

**tel. 4301-34208**

**fax 4301-34150**

VERBRAUCHERPREISE

Nationaler Index  
VERÄNDERUNG % T/T-12

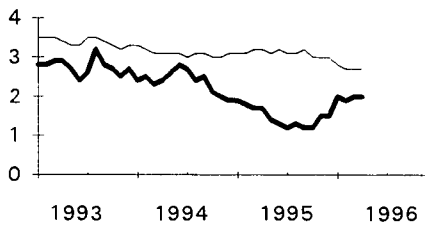
CONSUMER PRICES

National Index  
VARIATION % T/T-12

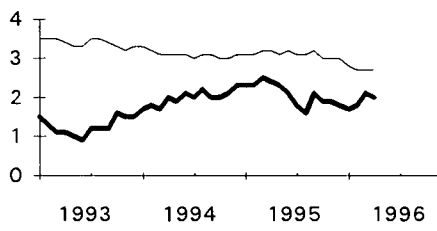
PRIX A LA CONSOMMATION

Indice National  
VARIATION % T/T-12

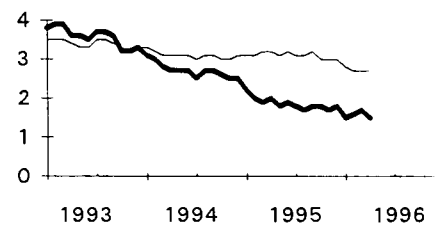
BELGIQUE - BELGIE



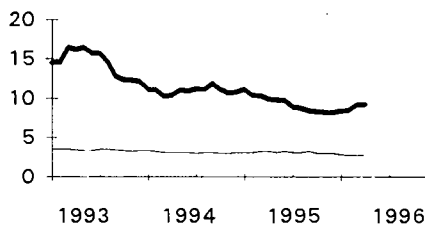
DANMARK



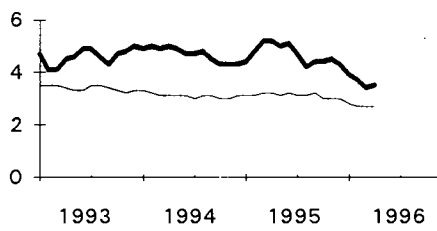
BR DEUTSCHLAND



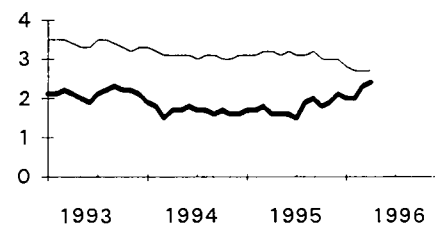
ELLADA



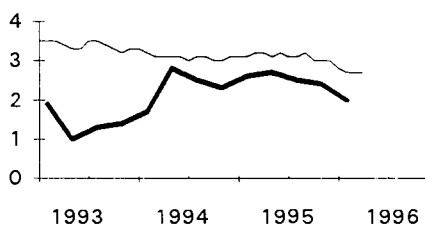
ESPANA



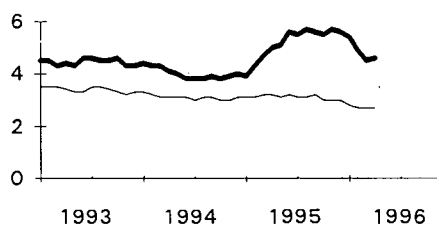
FRANCE



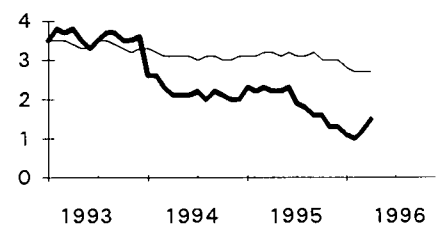
IRELAND



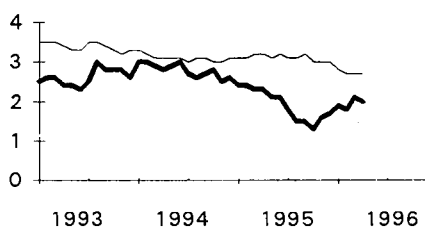
ITALIA



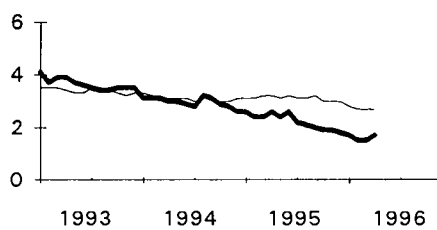
LUXEMBOURG



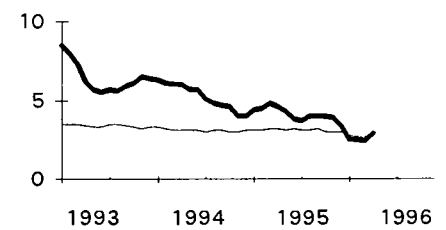
NEDERLAND



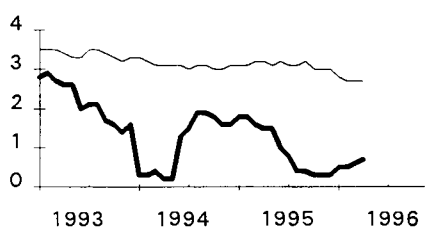
ÖSTERREICH



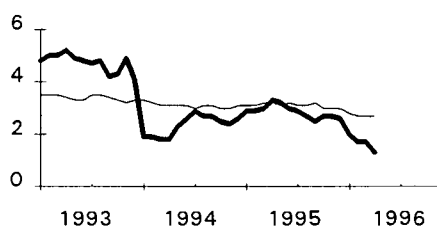
PORTUGAL



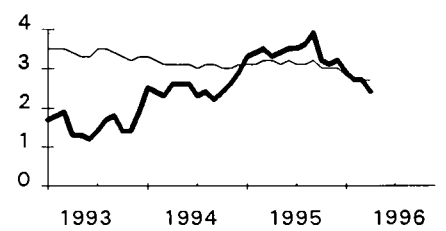
SUOMI - FINLAND



SVERIGE



UNITED KINGDOM



EUR 15

TABLE I  
NATIONAL CONSUMER PRICE INDICES

	EUR 15	B	DK	D	GR	E	F	IRL	I	L	NL
	1985 = 100										
	Annual Average										
1992	135.1	117.3	126.7	115.3	308.1	153.5	123.0	125.1	147.3	115.9	111.7
1993	139.7	120.6	128.3	119.5	352.6	160.6	125.6	126.9	153.8	120.1	114.6
1994	144.0	123.4	130.8	122.7	391.1	168.1	127.8	129.8	160.0	122.7	117.8
1995	148.5	125.3	133.6	125.0	427.4	176.0	129.9	133.2	168.3	125.1	120.1
1995	Monthly Indices										
April	148.1	124.9	133.5	124.7	425.2	175.7	129.6	:	166.6	124.8	120.2
May	148.3	124.9	134.0	124.7	428.1	175.7	129.8	133.1	167.5	124.9	120.0
June	148.7	125.0	133.8	125.2	431.9	176.0	129.8	:	168.7	125.1	119.8
July	148.6	125.7	133.2	125.4	421.8	176.0	129.6	:	169.0	125.2	119.8
August	149.1	126.0	133.4	125.5	422.1	176.4	130.2	133.8	169.5	125.1	120.0
September	149.5	125.7	134.2	125.4	434.8	177.2	130.7	:	169.9	125.3	121.0
October	149.5	125.4	134.2	125.3	439.7	177.5	130.8	:	170.5	125.5	120.9
November	149.7	125.7	134.5	125.3	440.7	178.0	130.9	133.9	171.6	125.5	120.9
December	150.0	125.8	134.4	125.6	445.2	178.4	131.0	:	171.9	125.6	120.5
1996	Monthly Indices										
January	150.3p	126.9	134.3	125.7	444.7	179.6	131.2	:	172.3p	125.9	121.1
February	150.8p	127.2	135.0	126.4	443.3	180.1	131.7	134.4	172.8p	126.0	121.5
March	151.4p	127.3	135.8	126.5	458.4	180.7	132.5	:	173.3p	126.3	122.5
April	152p	127.5	136.1	126.6	464.2	181.8	132.8	:	174.2p	126.6	122.6
1995	Rate of increase over one month (T/T-1)										
April/March	0.4	0.2	0.3	0.3	1.2	0.5	0.1	:	0.5	0.0	0.2
May/April	0.2	0.0	0.4	0.0	0.7	0.0	0.2	1.0	0.6	0.2	-0.2
June/May	0.3	0.1	-0.2	0.3	0.9	0.2	0.0	:	0.7	0.1	-0.2
July/June	-0.1	0.5	-0.5	0.2	-2.3	0.0	-0.2	:	0.2	0.1	0.0
August/July	0.3	0.2	0.2	0.1	0.1	0.3	0.4	0.5	0.3	-0.1	0.2
Sept./Augu	0.3	-0.3	0.6	-0.1	3.0	0.4	0.4	:	0.2	0.1	0.8
Oct./Sept.	0.0	-0.2	0.1	-0.1	1.1	0.2	0.1	:	0.4	0.2	-0.1
Nov./Oct.	0.1	0.3	0.2	0.0	0.2	0.3	0.1	0.1	0.6	0.0	0.0
Dec./Nov.	0.2	0.0	-0.1	0.3	1.0	0.3	0.1	:	0.2	0.1	-0.3
1996	Rate of increase over one month (T/T-1)										
Jan./Dec.	0.2p	0.9	-0.1	0.1	-0.1	0.7	0.2	:	0.2p	0.2	0.4
Feb./Jan.	0.4p	0.2	0.6	0.5	-0.3	0.3	0.4	0.4	0.3p	0.1	0.3
March/Feb.	0.4p	0.1	0.6	0.1	3.4	0.3	0.6	:	0.3p	0.2	0.9
April/March	0.4p	0.2	0.3	0.1	1.3	0.6	0.2	:	0.5p	0.3	0.1
1995	Rate of increase over 12 months (T/T-12)										
April	3.2	1.7	2.4	2.0	9.9	5.2	1.6	:	5.0	2.2	2.3
May	3.1	1.4	2.3	1.8	9.8	5.0	1.6	2.7	5.1	2.2	2.1
June	3.2	1.3	2.1	1.9	9.7	5.1	1.6	:	5.6	2.3	2.1
July	3.1	1.2	1.8	1.8	8.9	4.7	1.5	:	5.5	1.9	1.8
August	3.1	1.3	1.6	1.7	8.7	4.2	1.9	2.5	5.7	1.8	1.5
September	3.2	1.2	2.1	1.8	8.4	4.4	2.0	:	5.6	1.6	1.5
October	3.0	1.2	1.9	1.8	8.3	4.4	1.8	:	5.5	1.6	1.3
November	3.0	1.5	1.9	1.7	8.2	4.5	1.9	2.4	5.7	1.3	1.6
December	3.0	1.5	1.8	1.8	8.1	4.3	2.1	:	5.6	1.3	1.7
1996	Rate of increase over 12 months (T/T-12)										
January	2.8p	2.0	1.7	1.5	8.4	3.9	2.0	:	5.4p	1.1	1.9
February	2.7p	1.9	1.8	1.6	8.5	3.7	2.0	2.0	4.9p	1.0	1.8
March	2.7p	2.0	2.1	1.7	9.1	3.4	2.3	:	4.5p	1.2	2.1
April	2.7p	2.0	2.0	1.5	9.2	3.5	2.4	:	4.6p	1.5	2.0

TABLE II  
NATIONAL CONSUMER PRICE INDICES

A	P	FIN	S	UK	IS	N	CH	USA	JAP	CAN	
					Annual Average 1985 = 100						
119.7	206.7	136.7	151.1	146.4	278.1	143.3	124.6	130.5	112.3	133.4	1992
124.0	220.0	139.7	158.2	148.7	289.5	146.5	128.7	134.3	113.8	135.8	1993
127.7	231.5	141.2	161.6	152.4	294.0	148.6	129.8	137.8	114.6	136.1	1994
130.5	241.1	142.6	165.7	157.6	298.8	152.2	132.2	141.7	114.4	139.0	1995
					Monthly Indices						1995
130.2	241.3	142.5	165.9	157.5	296.7	152.0	132.2	141.3	114.5	138.9	April
130.2	241.1	142.6	166.0	158.1	297.2	152.2	131.9	141.5	114.9	139.2	May
130.7	240.4	143.1	165.9	158.3	297.6	152.6	132.2	141.8	114.8	139.2	June
131.6	240.4	143.0	165.7	157.6	298.4	152.5	132.1	141.8	114.0	139.5	July
132.3	241.6	142.8	165.5	158.5	299.6	152.2	132.5	142.2	114.2	139.3	August
131.1	242.1	142.9	166.6	159.2	300.7	153.0	132.7	142.5	115.0	139.4	September
130.7	243.0	142.9	167.1	158.3	302.1	153.0	132.5	142.9	114.4	139.3	October
130.6	243.2	142.5	167.0	158.3	301.0	152.9	132.4	142.8	114.2	139.6	November
130.5	242.7	142.4	166.5	159.3	300.8	152.9	132.4	142.7	114.3	139.4	December
											1996
131.2	243.4	142.6	166.2	158.8	302.1	152.2	132.8	143.6	114.2	139.7	January
131.6p	245.1	143.1	166.4	159.5	302.6	152.3	133.1	144.0	114.0	140.0	February
:	246.1	143.3	167.2	160.1	303.1	153.0	133.3	144.8	114.2	140.5	March
:	248.3	143.5	167.5	161.3	303.6	153.5	133.4	145.3	114.9	140.9	April
					Rate of increase over one month (T/T-1)						1995
0.1	0.4	0.1	0.7	1.0	-0.1	0.1	0.1	0.3	0.4	0.3	April/March
0.0	-0.1	0.1	0.1	0.4	0.2	0.1	-0.2	0.2	0.3	0.2	May/April
0.4	-0.3	0.4	-0.1	0.1	0.1	0.3	0.2	0.2	-0.1	0.0	June/May
0.7	0.0	-0.1	-0.1	-0.5	0.3	-0.1	-0.1	0.0	-0.7	0.2	July/June
0.5	0.5	-0.2	-0.1	0.5	0.4	-0.2	0.3	0.3	0.2	-0.1	August/July
-0.9	0.2	0.1	0.7	0.5	0.3	0.6	0.1	0.2	0.7	0.1	Sept./Augu
-0.3	0.4	0.0	0.3	-0.5	0.5	0.0	-0.1	0.3	-0.5	-0.1	Oct./Sept.
-0.1	0.1	-0.3	0.0	0.0	-0.3	-0.1	-0.1	-0.1	-0.2	0.2	Nov./Oct.
-0.1	-0.2	-0.1	-0.3	0.6	-0.1	0.0	0.0	-0.1	0.1	-0.1	Dec./Nov.
											1996
0.5	0.3	0.2	0.1	-0.3	0.4	-0.5	0.3	0.6	-0.1	0.2	Jan./Dec.
0.3p	0.7	0.4	0.1	0.5	0.2	0.0	0.2	0.3	-0.2	0.1	Feb./Jan.
:	0.4	0.1	0.5	0.4	0.2	0.5	0.1	0.5	0.2	0.4	March/Feb.
:	0.9	0.2	0.2	0.7	0.2	0.3	0.1	0.4	0.6	0.3	April/March
					Rate of increase over 12 months (T/T-12)						1995
2.6	4.6	1.5	3.3	3.3	1.1	2.6	1.6	3.1	-0.2	2.5	April
2.4	4.3	1.5	3.2	3.4	1.3	2.7	2.0	3.2	0.0	2.9	May
2.6	3.8	1.0	3.0	3.5	1.3	2.7	2.1	3.0	0.3	2.7	June
2.2	3.7	0.8	2.9	3.5	1.4	2.4	2.0	2.8	0.1	2.5	July
2.1	4.0	0.4	2.7	3.6	1.8	2.2	1.9	2.6	-0.2	2.3	August
2.0	4.0	0.4	2.5	3.9	1.8	2.3	2.0	2.5	0.2	2.3	September
1.9	4.0	0.3	2.7	3.2	2.4	2.3	1.9	2.8	-0.7	2.4	October
1.9	3.9	0.3	2.7	3.1	2.1	2.1	1.9	2.6	-0.7	2.1	November
1.8	3.4	0.3	2.6	3.2	2.0	2.2	1.9	2.5	-0.3	1.7	December
											1996
1.7	2.5	0.5	2.0	2.9	1.6	1.2	1.5	2.7	-0.4	1.6	January
1.5p	2.5	0.5	1.7	2.7	1.7	0.9	0.8	2.7	-0.2	1.3	February
:	2.4	0.6	1.7	2.7	2.0	0.7	0.9	2.8	0.1	1.4	March
:	2.9	0.7	1.3	2.4	2.3	1.0	0.9	2.9	0.3	1.4	April

# NATIONAL CONSUMER PRICE INDICES

## EXPLANATORY NOTES

### METHODOLOGY

The consumer price indices (CPIs) given here are the national general indices which have different names in each country; they are not harmonised\*. The coverage of these general indices varies between countries as regards the proportion of the population covered (e.g. specific income groups or other categories may be excluded), the goods and services covered (e.g. owner occupiers' housing costs may be excluded) and the geographical areas covered (e.g. rural areas may be excluded). A system of fixed weighting is used in some countries, whereas others use a chain system updating weights each year. Starting with the index for January 1993 the indices for Germany and for the EUR 15 average reflect the territory after the German reunification on 3rd October 1990. The general index published by Eurostat corresponds to the general index published by the country, but it may be on a different index reference period. 1985 is the index reference period used by Eurostat for ease of comparison.

\* **NB** : It should be noted that the figures in the first part of this publication (pp. 1-6) are based on national methodologies. Therefore they are not fully comparable one with another. The Member States of the European Union are currently working on a harmonisation project. As a first step in harmonisation, interim indices based largely on existing national CPIs have been compiled. They are published on pages 7-11 of this bulletin.

### CALCULATION OF THE EUR 15 AVERAGE INDEX FROM NATIONAL CONSUMER PRICE INDICES

The EUR 15 average index is calculated by Eurostat as a weighted average of the national price indices of the 15 Member States of the European Union. The index is calculated as a chain index of the "Laspeyres" type with country weights changing each year. The weight of a Member State is its proportion of final consumption of households in the total for EUR 15. The values of final consumption in national currencies are converted into purchasing power standards (PPS) using the purchasing power parities of GDP. Since the necessary national accounts data become available only after two years, the weights are lagged by two years, e.g. the weights used for 1996 are those of 1994. Moreover, national accounts data are often revised. To avoid continuous modifications in the EUR 15 average index for previous periods, Eurostat has "frozen" the weights which are used. Thus, the EUR 15 average index will not be affected by the revisions of the national accounts.

# **INTERIM INDICES OF CONSUMER PRICES FOR INTERNATIONAL PRICE COMPARISONS**

## **EXPLANATORY NOTES**

### **METHODOLOGY**

These interim indices are designed to facilitate comparison of rates of consumer price inflation across the European Union before fully harmonised indices can be produced. National Consumer Price Indices (CPIs) are not directly comparable because they are based on differences in concepts, methods and practices. A programme of work has, therefore, been instituted so that Member States will produce indices which can be directly compared with a fair degree of confidence. These indices will be called Harmonised Indices of Consumer Prices (HICPs); they will be distinct from national CPIs and will be published from February 1997. Meanwhile, it is necessary to produce a set of indices which are sufficiently comparable to permit the assessment of the Economic and Monetary Union criterion on price stability: the first convergence reports are due in 1996. For the interim indices national CPIs have been adjusted to provide measures of inflation as comparable as possible, mainly by excluding items for which major differences exist and for which comparable measures must be developed, but also by including items such as alcoholic drink and tobacco in those indices where these are not currently covered. The purposes of national CPIs and the interim indices differ and comparisons between them are not generally appropriate.

### **CALCULATION OF THE EUROPEAN AVERAGE OF THE INTERIM INDICES**

The European average of the interim indices is calculated by Eurostat as a weighted average of the interim indices of the 15 Member States of the European Union. The method corresponds to the calculation of the EUR 15 average index from national CPIs explained on page 6. Hence, the weights used for the Member States in the calculation of the European average from the interim indices are identical to the weights used in the EUR 15 average index of national CPIs.

After the launch of the HICPs in January 1997, the European average of the interim indices will be replaced by the European Index of Consumer Prices (EICP), an average of the 15 HICPs of Member States.

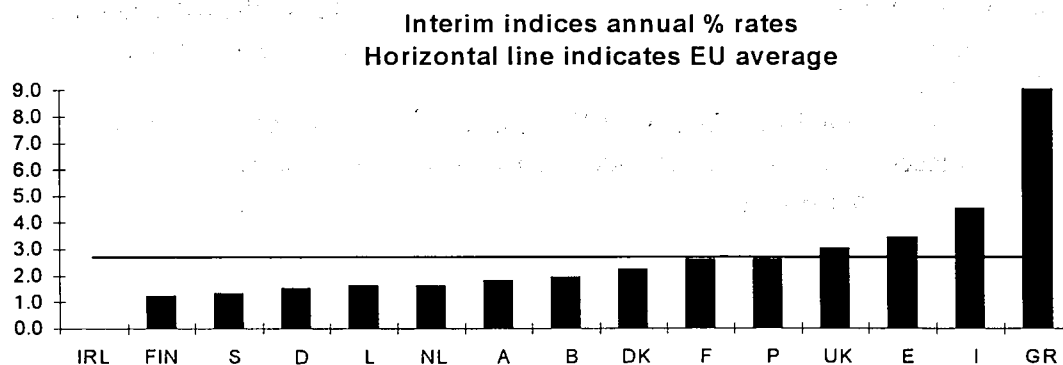
## INTERIM INDICES OF CONSUMER PRICES FOR INTERNATIONAL PRICE COMPARISONS

Given below are annual rates of inflation based on interim indices of consumer prices which have been constructed primarily for the European Commission and the European Monetary Institute in order that they may assess the convergence of economies preparatory to Economic and Monetary Union. The figures do not compare directly with the national CPIs given at the beginning of this bulletin which were designed for domestic purposes and will be continued to be used for such purposes. These interim indices represent the first stage in a programme of work to produce consumer price indices which are internationally comparable. Such Harmonised Indices of Consumer Prices (HICPs) will be available for international comparisons in 1997.

The criterion on price stability referred to in Article 109j of the Treaty on European Union requires that "a Member State has a price performance that is sustainable and an average rate of inflation, observed over a period of one year before the examination, that does not exceed by more than 1½ percentage points that of, at most, the three best performing Member States in terms of price stability. Inflation shall be measured by means of the consumer price index on a comparable basis, taking into account differences in national definitions". The interim indices presented here are not on a strictly comparable basis and should be used with caution. However, taken together with other information they provide a better basis for assessing convergence than the national indices. Further methodological notes are given on page 7 of this bulletin.

In ascending order of current inflation, the annual inflation rates as measured by the interim indices for the individual Member States for April to January are:

	<u>April 1996</u> April 1995	<u>March 1996</u> March 1995	<u>February 1996</u> February 1995	<u>January 1996</u> January 1995
IRL	: %	2.1 %*	2.1 %*	2.1 %*
FIN	1.2 %	1.1 %	0.9 %	0.8 %
S	1.3 %	1.5 %	1.3 %	1.6 %
D	1.5 %	1.4 %	1.3 %	1.4 %
L	1.6 %	1.3 %	1.0 %	1.1 %
NL	1.6 %	1.5 %	1.2 %	1.3 %
A	1.8 %**	1.9 %**	1.6 %	1.3 %
B	1.9 %	1.7 %	1.7 %	1.6 %
DK	2.2 %	2.3 %	2.0 %	1.8 %
F	2.6 %	2.5 %	2.1 %	2.0 %
P	2.6 %	2.1 %	2.3 %	2.3 %
UK	3.0 %	3.0 %	3.1 %	3.2 %
E	3.4 %	3.4 %	3.7 %	3.9 %
I	4.5 %p	4.4 %p	5.1 %p	5.7 %p
GR	9.0 %	8.9 %	8.2 %	8.1 %
EU	2.7 %p	2.7 %p	2.7 %p	2.8 %p



\* The index for Ireland is quarterly; February 1996/1995

\*\* Estimates from Österreichisches Statistisches Zentralamt

p = provisional



VERBRAUCHERPREISE

Interimsindex

VERÄNDERUNG % T/T-12

CONSUMER PRICES

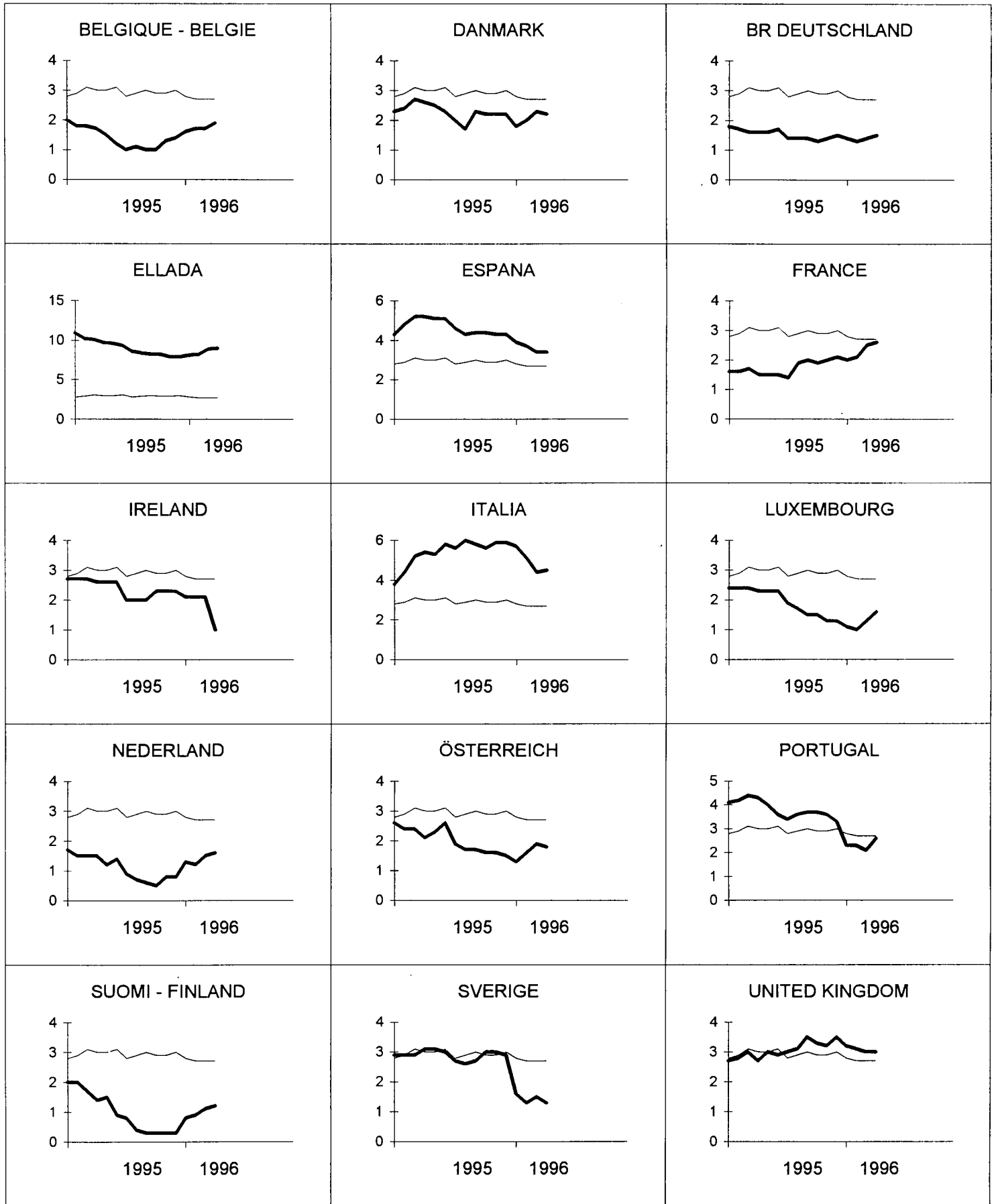
Interim Index

VARIATION % T/T-12

PRIX A LA CONSOMMATION

Indice Intérimaire

VARIATION % T/T-12



EU

TABLE III  
INTERIM INDICES OF CONSUMER PRICES FOR INTERNATIONAL PRICE COMPARISONS

	EU	B	DK	D	GR	E	F	IRL	I	L	NL
	Annual Average										1994 = 100
1994	100.0	100.0	100.0	100.0	100.0	100.0	100.0	100.0	100.0	100.0	100.0
1995	103.0	101.4	102.3	101.6	109.0	104.7	101.7	102.4	105.4	101.9	101.1
1994	Monthly Indices (NB: The index for Ireland is quarterly)										
April	99.7	99.4	99.7	99.8	99.1	99.3	99.9	100.0	99.1	99.4	100.1
May	100.0	99.8	100.1	100.0	99.9	99.4	100.1	100.0	99.8	99.6	100.2
June	100.2	100.1	100.1	100.2	101.0	99.5	100.1	100.0	99.9	99.6	99.8
July	100.1	100.5	99.9	100.4	99.0	99.9	100.0	100.5	100.2	100.1	99.4
August	100.4	100.7	100.4	100.4	99.3	100.6	100.0	100.5	100.2	100.2	99.9
September	100.6	100.7	100.5	100.3	102.4	100.9	100.3	100.5	100.6	100.5	101.0
October	100.8	100.6	100.7	100.4	103.6	101.1	100.5	100.7	101.1	100.7	101.1
November	100.9	100.4	100.9	100.3	104.1	101.4	100.5	100.7	101.5	101.0	100.7
December	101.1	100.5	100.8	100.4	105.3	101.8	100.5	100.7	101.7	101.1	100.2
1995											
January	101.4	100.9	101.1	100.8	104.6	102.9	100.7	101.5	102.1	101.5	100.1
February	101.9	101.0	101.6	101.2	104.1	103.4	101.0	101.5	103.0	101.7	100.7
March	102.4	101.0	101.9	101.2	107.3	104.0	101.3	101.5	104.0	101.7	101.5
April	102.8	101.1	102.3	101.4	108.7	104.5	101.4	102.6	104.5	101.7	101.6
May	103.1	101.3	102.6	101.6	109.5	104.5	101.6	102.6	105.1	101.9	101.4
June	103.2	101.3	102.4	101.9	110.4	104.6	101.6	102.6	105.7	101.9	101.2
July	103.0	101.5	101.9	101.8	107.5	104.5	101.4	102.5	105.8	102.0	100.3
August	103.3	101.8	102.1	101.8	107.6	104.9	101.9	102.5	106.2	101.9	100.6
September	103.6	101.7	102.8	101.7	110.8	105.3	102.3	102.5	106.4	102.0	101.6
October	103.7	101.6	102.9	101.7	112.1	105.5	102.4	103.0	106.8	102.2	101.6
November	103.9	101.7	103.1	101.7	112.3	105.8	102.5	103.0	107.5	102.3	101.5
December	104.1	101.9	103.0	101.9	113.6	106.2	102.6	103.0	107.7	102.4	101.0
1996											
January	104.3p	102.5	102.9	102.2	113.1	106.9	102.7	103.6	107.9p	102.6	101.4
February	104.7p	102.7	103.6	102.5	112.6	107.2	103.1	103.6	108.3p	102.7	101.9
March	105.2p	102.7	104.2	102.6	116.9	107.5	103.8	103.6	108.6p	103.0	103.0
April	105.6p	103.0	104.5	102.9	118.5	108.1	104.0	:	109.2p	103.3	103.2
1995	Rate of increase over 12 months										(T/T-12)
April	3.0	1.7	2.6	1.6	9.7	5.2	1.5	2.6	5.4	2.3	1.5
May	3.0	1.5	2.5	1.6	9.6	5.1	1.5	2.6	5.3	2.3	1.2
June	3.1	1.2	2.3	1.7	9.3	5.1	1.5	2.6	5.8	2.3	1.4
July	2.8	1.0	2.0	1.4	8.6	4.6	1.4	2.0	5.6	1.9	0.9
August	2.9	1.1	1.7	1.4	8.4	4.3	1.9	2.0	6.0	1.7	0.7
September	3.0	1.0	2.3	1.4	8.2	4.4	2.0	2.0	5.8	1.5	0.6
October	2.9	1.0	2.2	1.3	8.2	4.4	1.9	2.3	5.6	1.5	0.5
November	2.9	1.3	2.2	1.4	7.9	4.3	2.0	2.3	5.9	1.3	0.8
December	3.0	1.4	2.2	1.5	7.9	4.3	2.1	2.3	5.9	1.3	0.8
1996											
January	2.8p	1.6	1.8	1.4	8.1	3.9	2.0	2.1	5.7p	1.1	1.3
February	2.7p	1.7	2.0	1.3	8.2	3.7	2.1	2.1	5.1p	1.0	1.2
March	2.7p	1.7	2.3	1.4	8.9	3.4	2.5	2.1	4.4p	1.3	1.5
April	2.7p	1.9	2.2	1.5	9.0	3.4	2.6	:	4.5p	1.6	1.6









BELGIQUE / BELGIË

**Moniteur belge/  
Belgisch Staatsblad**  
Rue de Louvain 42/Leuvenseweg 42  
B-1000 Bruxelles/B-1000 Brussel  
Tél. (02) 512 00 26  
Fax (02) 511 01 84

**Jean De Lannoy**  
Avenue du Roi 202/Koningslaan 202  
B-1000 Bruxelles/B-1060 Brussel  
Tél. (02) 538 51 69  
Fax (02) 538 08 41

Autres distributeurs/  
Overige verkooppunten:

**Librairie européenne/  
Europese boekhandel**  
Rue de la Loi 244/Wetstraat 244  
B-1040 Bruxelles/B-1040 Brussel  
Tél. (02) 231 04 35  
Fax (02) 735 08 60

Document delivery:

**Credoc**  
Rue de la Montagne 34/Bergstraat 34  
Boîte 11/Bus 11  
B-1000 Bruxelles/B-1000 Brussel  
Tél. (02) 511 69 41  
Fax (02) 513 31 95

DANMARK

**J. H. Schultz Information A/S**  
Herstedvang 10-12  
DK-2620 Albertslund  
Tlf. 43 63 23 00  
Fax (Sales) 43 63 19 69  
Fax (Management) 43 63 19 49

DEUTSCHLAND

**Bundesanzeiger Verlag**  
Postfach 10 05 34  
D-50445 Köln  
Tel. (02 21) 20 29-0  
Fax (02 21) 2 02 92 78

GREECE/ΕΛΛΑΔΑ

**G.C. Eleftheroudakis SA**  
International Bookstore  
Nikis Street 4  
GR-10563 Athens  
Tel. (01) 322 63 23  
Fax 323 98 21

ESPAÑA

**Mundi-Prensa Libros, SA**  
Castelló, 37  
E-28001 Madrid  
Tel. (91) 431 33 99 (Libros)  
431 32 22 (Suscripciones)  
435 36 37 (Dirección)  
Fax (91) 575 39 98

**Boletín Oficial del Estado**

Trafalgar, 27-29  
E-28071 Madrid  
Tel. (91) 538 22 95  
Fax (91) 538 23 49

Sucursal:

**Librería Internacional AEDOS**  
Consejo de Ciento, 391  
E-08009 Barcelona  
Tel. (93) 488 34 92  
Fax (93) 487 76 59

**Librería de la Generalitat  
de Catalunya**

Rambra dels Estudis, 118 (Palau Moja)  
E-08002 Barcelona  
Tel. (93) 302 68 35  
Tel. (93) 302 64 62  
Fax (93) 302 12 99

FRANCE

**Journal officiel  
Service des publications  
des Communautés européennes**  
26, rue Desaix  
F-75727 Paris Cedex 15  
Tél. (1) 40 58 77 01/31  
Fax (1) 40 58 77 00

IRELAND

**Government Supplies Agency**  
4-5 Harcourt Road  
Dublin 2  
Tel. (1) 66 13 111  
Fax (1) 47 52 760

ITALIA

**Licosa SpA**  
Via Duca di Calabria 1/1  
Casella postale 552  
I-50125 Firenze  
Tel. (055) 64 54 15  
Fax 64 12 57

GRAND-DUCHÉ DE LUXEMBOURG

**Messageries du livre**  
5, rue Raiffeisen  
L-2411 Luxembourg  
Tél. 40 10 20  
Fax 49 06 61

NEDERLAND

**SDU Servicecentrum Uitgeverijen**  
Postbus 20014  
2500 EA 's-Gravenhage  
Tel. (070) 37 89 880  
Fax (070) 37 89 783

ÖSTERREICH

**Manz'sche Verlags-  
und Universitätsbuchhandlung**  
Kohlmarkt 16  
A-1014 Wien  
Tel. (1) 531 610  
Fax (1) 531 61-181

Document delivery:

**Wirtschaftskammer**  
Wiedner Hauptstraße  
A-1045 Wien  
Tel. (0222) 50105-4356  
Fax (0222) 50206-297

PORTUGAL

**Imprensa Nacional — Casa da Moeda, EP**  
Rua Marquês Sá da Bandeira, 16-A  
P-1099 Lisboa Codex  
Tel. (01) 353 03 99  
Fax (01) 353 02 94/384 01 32

**Distribuidora de Livros  
Bertrand, Ld.\***

**Grupo Bertrand, SA**  
Rua das Terras dos Vales, 4-A  
Apartado 37  
P-2700 Amadora Codex  
Tel. (01) 49 59 050  
Fax 49 60 255

SUOMI/FINLAND

**Akateeminen Kirjakauppa**  
Akademiska Bokhandeln  
Pohjoisesplanadi 39 / Norra esplanaden 39  
PL / PB 128  
FIN-00101 Helsinki / Helsingfors  
Tel. (90) 121 4322  
Fax (90) 121 44 35

SVERIGE

**BTJ AB**  
Traktorvägen 11  
Box 200  
S-221 00 Lund  
Tel. (046) 18 00 00  
Fax (046) 18 01 25

UNITED KINGDOM

**HMSO Books (Agency section)**  
HMSO Publications Centre  
51 Nine Elms Lane  
London SW8 5DR  
Tel. (0171) 873 9090  
Fax (0171) 873 8463

ICELAND

**BOKABUD  
LARUSAR BLÖNDAL**  
Skólavörðustíg, 2  
IS-101 Reykjavík  
Tel. 551 56 50  
Fax 552 55 60

NORGE

**NIC Info a/s**  
Boks 6512 Etterstad  
0606 Oslo  
Tel. (22) 57 33 34  
Fax (22) 68 19 01

SCHWEIZ/SUISSE/SVIZZERA

**OSEC**  
Stampfenbachstraße 85  
CH-8035 Zürich  
Tel. (01) 365 54 49  
Fax (01) 365 54 11

BĂLGARIJA

**Europress Klassica BK Ltd**  
66, bd Vitoshka  
BG-1463 Sofia  
Tel./Fax (2) 52 74 75

ČESKÁ REPUBLIKA

**NIS ČR**  
Havelkova 22  
CZ-130 00 Praha 3  
Tel./Fax (2) 24 22 94 33

HRVATSKA

**Mediatrade**  
P. Hatza 1  
HR-4100 Zagreb  
Tel./Fax (041) 43 03 92

MAGYARORSZÁG

**Euro-Info-Service**  
Európá Ház  
Margitsziget  
H-1138 Budapest  
Tel./Fax (1) 111 60 61, (1) 111 62 16

POLSKA

**Business Foundation**  
ul. Krucza 38/42  
PL-00-512 Warszawa  
Tel. (2) 621 99 93, 628 28 82  
International Fax&Phone (0-39) 12 00 77

ROMÂNIA

**Euromedia**  
65, Strada Dionisie Lupu  
RO-70184 Bucuresti  
Tel./Fax 1-31 29 646

RUSSIA

**CCEC**  
9,60-letiya Oktyabrya Avenue  
117312 Moscow  
Tel./Fax (095) 135 52 27

SLOVAKIA

**Slovak Technical  
Library**  
Nám. slobody 19  
SLO-812 23 Bratislava 1  
Tel. (7) 52 204 52  
Fax (7) 52 957 85

CYPRUS

**Cyprus Chamber of Commerce  
and Industry**  
Chamber Building  
38 Grivas Dhigenis Ave  
3 Deligiorgis Street  
PO Box 1455  
Nicosia  
Tel. (2) 44 95 00, 46 23 12  
Fax (2) 36 10 44

MALTA

**Miller Distributors Ltd**  
PO Box 25  
Malta International Airport LQA 05 Malta  
Tel. 66 44 88  
Fax 67 67 99

TÜRKIYE

**Pres AS**  
Dünya Infotel  
TR-80050 Tünel-Istanbul  
Tel. (1) 251 91 90/251 96 96  
Fax (1) 251 91 97

ISRAEL

**Roy International**  
17, Shimon Hatarssi Street  
P.O.B. 13056  
61130 Tel Aviv  
Tel. (3) 546 14 23  
Fax (3) 546 14 42

Sub-agent for the Palestinian Authority:

**INDEX Information Services**  
PO Box 19502  
Jerusalem  
Tel. (2) 27 16 34  
Fax (2) 27 12 19

EGYPT/  
MIDDLE EAST

**Middle East Observer**  
41 Sherif St.  
Cairo  
Tel/Fax (2) 393 97 32

UNITED STATES OF AMERICA/  
CANADA

UNIPUB

4611-F Assembly Drive  
Lanham, MD 20706-4391  
Tel. Toll Free (800) 274 48 88  
Fax (301) 459 00 56

CANADA

Subscriptions only  
Uniquement abonnements

**Renouf Publishing Co. Ltd**

1294 Algoma Road  
Ottawa, Ontario K1B 3W8  
Tel. (613) 741 43 33  
Fax (613) 741 54 39

AUSTRALIA

**Hunter Publications**

58A Gipps Street  
Collingwood  
Victoria 3066  
Tel. (3) 9417 53 61  
Fax (3) 9419 71 54

JAPAN

**Procurement Services Int. (PSI-Japan)**

Kyoku Dome Postal Code 102  
Tokyo Kojimachi Post Office  
Tel. (03) 32 34 69 21  
Fax (03) 32 34 69 15

Sub-agent:

**Kinokuniya Company Ltd  
Journal Department**

PO Box 55 Chitose  
Tokyo 156  
Tel. (03) 34 39-0124

SOUTH and EAST ASIA

**Legal Library Services Ltd**

Orchard  
PO Box 0523  
Singapore 9123  
Tel. 243 24 98  
Fax 243 24 79

SOUTH AFRICA

**Safto**

5th Floor, Export House  
Cnr Maude & West Streets  
Sandton 2146  
Tel. (011) 883-3737  
Fax (011) 883-6569

ANDERE LÄNDER  
OTHER COUNTRIES  
AUTRES PAYS

**Office des publications officielles  
des Communautés européennes**

2, rue Mercier  
L-2985 Luxembourg  
Tél. 29 29-1  
Télex PUBOF LU 1324 b  
Fax 48 85 73, 48 68 17

Price (excl. VAT) in Luxembourg: Single copy ECU 9 • Subscription ECU 77



OFICINA DE PUBLICACIONES OFICIALES DE LAS COMUNIDADES EUROPEAS  
KONTORET FOR DE EUROPÆISKE FÆLLESSKABERS OFFICIELLE PUBLIKATIONER  
AMT FÜR AMTLICHE VERÖFFENTLICHUNGEN DER EUROPÄISCHEN GEMEINSCHAFTEN  
ΥΠΗΡΕΣΙΑ ΕΠΙΣΗΜΩΝ ΕΚΔΟΣΕΩΝ ΤΩΝ ΕΥΡΩΠΑΪΚΩΝ ΚΟΙΝΟΤΗΤΩΝ  
OFFICE FOR OFFICIAL PUBLICATIONS OF THE EUROPEAN COMMUNITIES  
OFFICE DES PUBLICATIONS OFFICIELLES DES COMMUNAUTÉS EUROPÉENNES  
UFFICIO DELLE PUBBLICAZIONI UFFICIALI DELLE COMUNITÀ EUROPEE  
BUREAU VOOR OFFICIËLE PUBLIKATIES DER EUROPESE GEMEENSCHAPPEN  
SERVIÇO DAS PUBLICAÇÕES OFICIAIS DAS COMUNIDADES EUROPEIAS

L - 2985 Luxembourg

Catalogue number: CA-CB-96-005-EN-C