



Consumer price index

6 □ 1996 Monthly

PRICES: EU ANNUAL INFLATION STABLE AT 2.7% IN MAY 1996

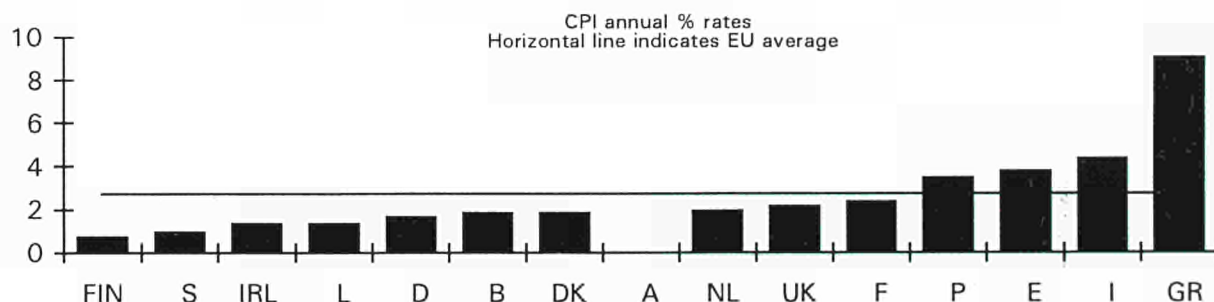
For the fourth consecutive month the annual inflation rate for the EU as a whole remained stable at 2.7% in May, the same as in February, March and April 1996. A year ago, in May 1995, the corresponding rate was 3.1%.

The index for EUR 15 rose by 0.2% between April and May. Over the month there were marked increases in the index of Greece (+0.6%) and in Portugal (+0.5%). There were moderate increases in Denmark, Ireland and Italy (+0.4%), in Spain (+0.3%), in Germany, France, Finland and in the United Kingdom (+0.2%). There was a small increase in Luxembourg (+0.1%). There were small decreases in Sweden (-0.1%), in Belgium and in the Netherlands (-0.2%).

The result for Austria was not available at the closing date of this report.

In ascending order of current inflation, the annual rates of inflation of the Member States for May and those for the corresponding period a year ago are as follows:

	<u>May 1996</u>	<u>May 1995</u>		<u>May 1996</u>	<u>May 1995</u>
	<u>May 1995</u>	<u>May 1994</u>		<u>May 1995</u>	<u>May 1994</u>
Finland	0.8 %	1.5 %	Netherlands	2.0 %	2.1 %
Sweden	1.0 %	3.2 %	United Kingdom	2.2 %	3.4 %
Ireland	1.4 % *	2.7 % *	France	2.4 %	1.6 %
Luxembourg	1.4 %	2.2 %	Portugal	3.5 %	4.3 %
Germany	1.7 %	1.8 %	Spain	3.8 %	5.0 %
Belgium	1.9 %	1.4 %	Italy	4.4 % p	5.1 %
Denmark	1.9 %	2.3 %	Greece	9.1 %	9.8 %
Austria	: %	2.4 %	EUR 15	2.7 % p	3.1 %



The corresponding annual rates of increase for some other countries are: Japan +0.2% (0.0%), Switzerland +0.7% (+2.0%), Norway +1.0% (+2.7%), Canada +1.5% (+2.9%), Iceland +2.8% (+1.3%) and the USA +2.9% (3.2%).

* The index for Ireland is quarterly
p = provisional



OFICINA ESTADÍSTICA DE LAS COMUNIDADES EUROPEAS
DE EUROPÆISKE FÆLLESSKABERS STATISTISKE KONTOR
STATISTISCHES AMT DER EUROPÄISCHEN GEMEINSCHAFTEN
ΣΤΑΤΙΣΤΙΚΗ ΥΠΗΡΕΣΙΑ ΤΩΝ ΕΥΡΩΠΑΪΚΩΝ ΚΟΙΝΟΤΗΤΩΝ
STATISTICAL OFFICE OF THE EUROPEAN COMMUNITIES
OFFICE STATISTIQUE DES COMMUNAUTÉS EUROPÉENNES
ISTITUTO STATISTICO DELLE COMUNITÀ EUROPEE
BUREAU VOOR DE STATISTIEK DER EUROPESE GEMEENSCHAPPEN
SERVIÇO DE ESTATÍSTICA DAS COMUNIDADES EUROPEIAS

L-2920 Luxembourg — Tél. 43 01-1 — Télex COMEUR LU 3423
B-1049 Bruxelles, rue de la Loi 200 — Tél. 299 11 11

The information included in this bulletin has been taken from the Cronos databank, which is accessible via the different host companies. For all information about these host companies contact Eurostat in Luxembourg, tel. 4301-34567, fax 436404.

Inquires concerning the data published in this bulletin should be addressed to:

Ms BARBIER

TEL +352 4301 32419

FAX +352 4301 33989

Inquires concerning the methodologies of national CPIs and interim indices should be addressed to :

Ms. COSTANZI

TEL +352 4301 33442

FAX +352 4301 33989

VERBRAUCHERPREISE

Nationaler Index

VERÄNDERUNG % T/T-12

CONSUMER PRICES

National Index

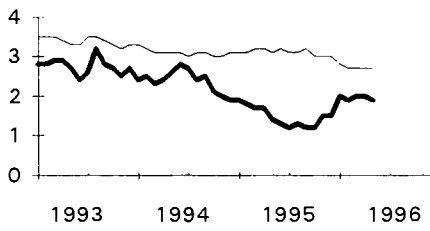
VARIATION % T/T-12

PRIX A LA CONSOMMATION

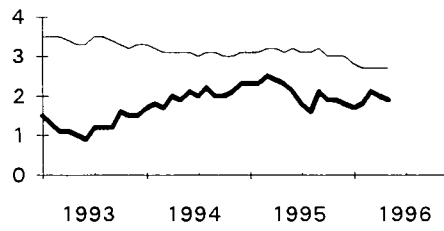
Indice National

VARIATION % T/T-12

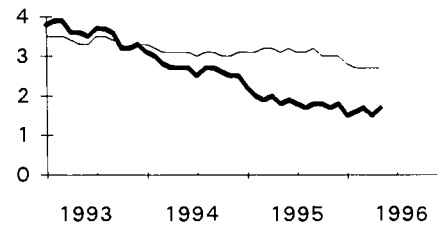
BELGIQUE - BELGIE



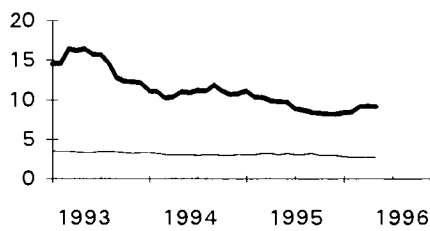
DANMARK



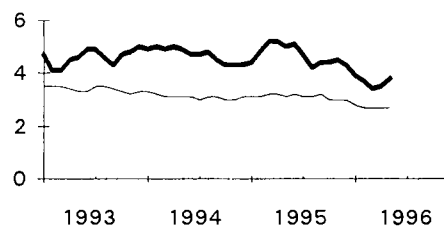
BR DEUTSCHLAND



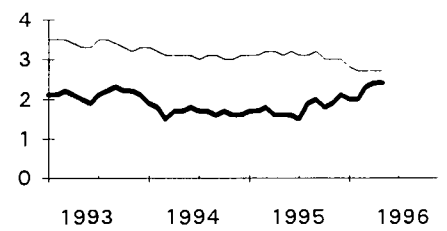
ELLADA



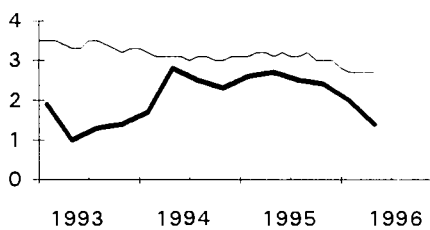
ESPAÑA



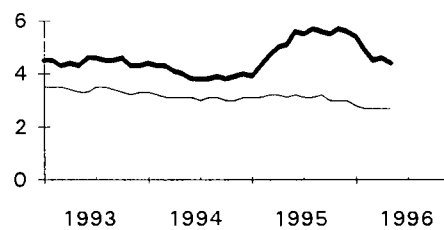
FRANCE



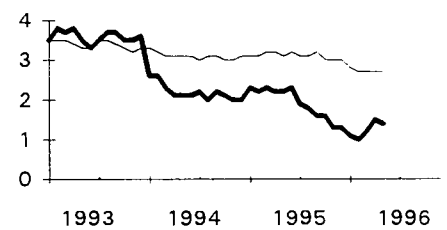
IRELAND



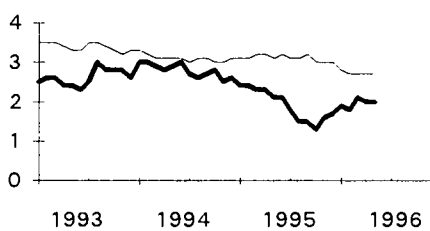
ITALIA



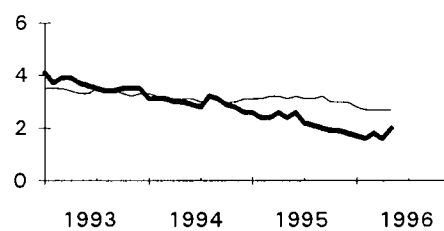
LUXEMBOURG



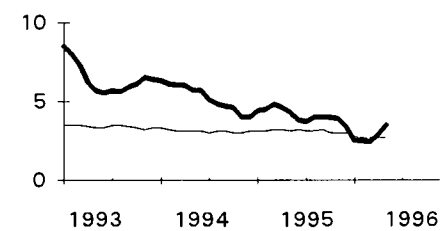
NEDERLAND



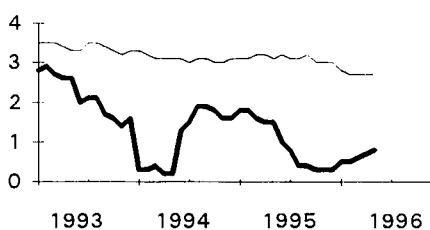
ÖSTERREICH



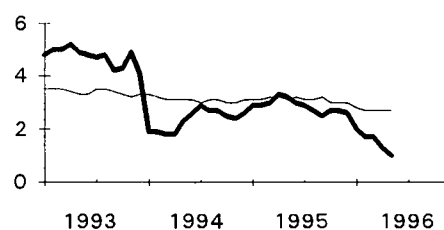
PORTUGAL



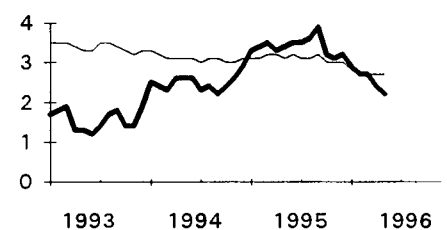
SUOMI - FINLAND



SVERIGE



UNITED KINGDOM



EUR 15

TABLE I
NATIONAL CONSUMER PRICE INDICES

	EUR 15	B	DK	D	GR	E	F	IRL	I	L	NL
	1985 = 100										
	Annual Average										
1992	135.1	117.3	126.7	115.3	308.1	153.5	123.0	125.1	147.3	115.9	111.7
1993	139.7	120.6	128.3	119.5	352.6	160.6	125.6	126.9	153.8	120.1	114.6
1994	144.0	123.4	130.8	122.7	391.1	168.1	127.8	129.8	160.0	122.7	117.8
1995	148.5	125.3	133.6	125.0	427.4	176.0	129.9	133.2	168.3	125.1	120.1
1995	Monthly Indices										
May	148.3	124.9	134.0	124.7	428.1	175.7	129.8	133.1	167.5	124.9	120.0
June	148.7	125.0	133.8	125.2	431.9	176.0	129.8	:	168.7	125.1	119.8
July	148.6	125.7	133.2	125.4	421.8	176.0	129.6	:	169.0	125.2	119.8
August	149.1	126.0	133.4	125.5	422.1	176.4	130.2	133.8	169.5	125.1	120.0
September	149.5	125.7	134.2	125.4	434.8	177.2	130.7	:	169.9	125.3	121.0
October	149.5	125.4	134.2	125.3	439.7	177.5	130.8	:	170.5	125.5	120.9
November	149.7	125.7	134.5	125.3	440.7	178.0	130.9	133.9	171.6	125.5	120.9
December	150.0	125.8	134.4	125.6	445.2	178.4	131.0	:	171.9	125.6	120.5
1996	Monthly Indices										
January	150.3p	126.9	134.3	125.7	444.7	179.6	131.2	:	172.3p	125.9	121.1
February	150.8p	127.2	135.0	126.4	443.3	180.1	131.7	134.4	172.8p	126.0	121.5
March	151.4p	127.3	135.8	126.5	458.4	180.7	132.5	:	173.3p	126.3	122.5
April	152.0p	127.5	136.1	126.6	464.2	181.8	132.8	:	174.2p	126.6	122.6
May	152.3p	127.3	136.6	126.8	467.2	182.4	133.0	135.0	174.9p	126.7	122.4
1995	Rate of increase over one month										(T/T-1)
May/April	0.2	0.0	0.4	0.0	0.7	0.0	0.2	1.0	0.6	0.2	-0.2
June/May	0.3	0.1	-0.2	0.3	0.9	0.2	0.0	:	0.7	0.1	-0.2
July/June	-0.1	0.5	-0.5	0.2	-2.3	0.0	-0.2	:	0.2	0.1	0.0
August/July	0.3	0.2	0.2	0.1	0.1	0.3	0.4	0.5	0.3	-0.1	0.2
Sept./Augu	0.3	-0.3	0.6	-0.1	3.0	0.4	0.4	:	0.2	0.1	0.8
Oct./Sept.	0.0	-0.2	0.1	-0.1	1.1	0.2	0.1	:	0.4	0.2	-0.1
Nov./Oct.	0.1	0.3	0.2	0.0	0.2	0.3	0.1	0.1	0.6	0.0	0.0
Dec./Nov.	0.2	0.0	-0.1	0.3	1.0	0.3	0.1	:	0.2	0.1	-0.3
1996	Rate of increase over one month										
Jan./Dec.	0.2p	0.9	-0.1	0.1	-0.1	0.7	0.2	:	0.2p	0.2	0.4
Feb./Jan.	0.4p	0.2	0.6	0.5	-0.3	0.3	0.4	0.4	0.3p	0.1	0.3
March/Feb.	0.4p	0.1	0.6	0.1	3.4	0.3	0.6	:	0.3p	0.2	0.9
April/March	0.4p	0.2	0.3	0.1	1.3	0.6	0.2	:	0.5p	0.3	0.1
May/April	0.2p	-0.2	0.4	0.2	0.6	0.3	0.2	0.4	0.4p	0.1	-0.2
1995	Rate of increase over 12 months										(T/T-12)
May	3.1	1.4	2.3	1.8	9.8	5.0	1.6	2.7	5.1	2.2	2.1
June	3.2	1.3	2.1	1.9	9.7	5.1	1.6	:	5.6	2.3	2.1
July	3.1	1.2	1.8	1.8	8.9	4.7	1.5	:	5.5	1.9	1.8
August	3.1	1.3	1.6	1.7	8.7	4.2	1.9	2.5	5.7	1.8	1.5
September	3.2	1.2	2.1	1.8	8.4	4.4	2.0	:	5.6	1.6	1.5
October	3.0	1.2	1.9	1.8	8.3	4.4	1.8	:	5.5	1.6	1.3
November	3.0	1.5	1.9	1.7	8.2	4.5	1.9	2.4	5.7	1.3	1.6
December	3.0	1.5	1.8	1.8	8.1	4.3	2.1	:	5.6	1.3	1.7
1996	Rate of increase over 12 months										
January	2.8p	2.0	1.7	1.5	8.4	3.9	2.0	:	5.4p	1.1	1.9
February	2.7p	1.9	1.8	1.6	8.5	3.7	2.0	2.0	4.9p	1.0	1.8
March	2.7p	2.0	2.1	1.7	9.1	3.4	2.3	:	4.5p	1.2	2.1
April	2.7p	2.0	2.0	1.5	9.2	3.5	2.4	:	4.6p	1.5	2.0
May	2.7p	1.9	1.9	1.7	9.1	3.8	2.4	1.4	4.4p	1.4	2.0

TABLE II
NATIONAL CONSUMER PRICE INDICES

A	P	FIN	S	UK	IS	N	CH	USA	JAP	CAN	
					Annual Average 1985 = 100						
119.7	206.7	136.7	151.1	146.4	278.1	143.3	124.6	130.5	112.3	133.4	1992
124.0	220.0	139.7	158.2	148.7	289.5	146.5	128.7	134.3	113.8	135.8	1993
127.7	231.5	141.2	161.6	152.4	294.0	148.6	129.8	137.8	114.6	136.1	1994
130.5	241.1	142.6	165.7	157.6	298.8	152.2	132.2	141.7	114.4	139.0	1995
					Monthly Indices						1995
130.2	241.1	142.6	166.0	158.1	297.2	152.2	131.9	141.5	114.9	139.2	May
130.7	240.4	143.1	165.9	158.3	297.6	152.6	132.2	141.8	114.8	139.2	June
131.6	240.4	143.0	165.7	157.6	298.4	152.5	132.1	141.8	114.0	139.5	July
132.3	241.6	142.8	165.5	158.5	299.6	152.2	132.5	142.2	114.2	139.3	August
131.1	242.1	142.9	166.6	159.2	300.7	153.0	132.7	142.5	115.0	139.4	September
130.7	243.0	142.9	167.1	158.3	302.1	153.0	132.5	142.9	114.4	139.3	October
130.6	243.2	142.5	167.0	158.3	301.0	152.9	132.4	142.8	114.2	139.6	November
130.5	242.7	142.4	166.5	159.3	300.8	152.9	132.4	142.7	114.3	139.4	December
					1996						
131.2	243.4	142.6	166.2	158.8	302.1	152.2	132.8	143.6	114.2	139.7	January
131.8	245.1	143.1	166.4	159.5	302.6	152.3	133.1	144.0	114.0	140.0	February
132.4	246.1	143.3	167.2	160.1	303.1	153.0	133.3	144.8	114.2	140.5	March
132.3	248.3	143.5	167.5	161.3	303.6	153.5	133.4	145.3	114.9	140.9	April
:	249.5	143.8	167.3	161.6	305.5	153.7	132.9	145.6	115.1	141.3	May
					Rate of increase over one month (T/T-1)						1995
0.0	-0.1	0.1	0.1	0.4	0.2	0.1	-0.2	0.2	0.3	0.2	May/April
0.4	-0.3	0.4	-0.1	0.1	0.1	0.3	0.2	0.2	-0.1	0.0	June/May
0.7	0.0	-0.1	-0.1	-0.5	0.3	-0.1	-0.1	0.0	-0.7	0.2	July/June
0.5	0.5	-0.2	-0.1	0.5	0.4	-0.2	0.3	0.3	0.2	-0.1	August/July
-0.9	0.2	0.1	0.7	0.5	0.3	0.6	0.1	0.2	0.7	0.1	Sept./Augu
-0.3	0.4	0.0	0.3	-0.5	0.5	0.0	-0.1	0.3	-0.5	-0.1	Oct./Sept.
-0.1	0.1	-0.3	0.0	0.0	-0.3	-0.1	-0.1	-0.1	-0.2	0.2	Nov./Oct.
-0.1	-0.2	-0.1	-0.3	0.6	-0.1	0.0	0.0	-0.1	0.1	-0.1	Dec./Nov.
					1996						
0.5	0.3	0.2	0.1	-0.3	0.4	-0.5	0.3	0.6	-0.1	0.2	Jan./Dec.
0.5	0.7	0.4	0.1	0.5	0.2	0.0	0.2	0.3	-0.2	0.1	Feb./Jan.
0.5	0.4	0.1	0.5	0.4	0.2	0.5	0.1	0.5	0.2	0.4	March/Feb.
-0.1	0.9	0.2	0.2	0.7	0.2	0.3	0.1	0.4	0.6	0.3	April/March
:	0.5	0.2	-0.1	0.2	0.6	0.2	-0.4	0.2	0.2	0.3	May/April
					Rate of increase over 12 months (T/T-12)						1995
2.4	4.3	1.5	3.2	3.4	1.3	2.7	2.0	3.2	0.0	2.9	May
2.6	3.8	1.0	3.0	3.5	1.3	2.7	2.1	3.0	0.3	2.7	June
2.2	3.7	0.8	2.9	3.5	1.4	2.4	2.0	2.8	0.1	2.5	July
2.1	4.0	0.4	2.7	3.6	1.8	2.2	1.9	2.6	-0.2	2.3	August
2.0	4.0	0.4	2.5	3.9	1.8	2.3	2.0	2.5	0.2	2.3	September
1.9	4.0	0.3	2.7	3.2	2.4	2.3	1.9	2.8	-0.7	2.4	October
1.9	3.9	0.3	2.7	3.1	2.1	2.1	1.9	2.6	-0.7	2.1	November
1.8	3.4	0.3	2.6	3.2	2.0	2.2	1.9	2.5	-0.3	1.7	December
					1996						
1.7	2.5	0.5	2.0	2.9	1.6	1.2	1.5	2.7	-0.4	1.6	January
1.6	2.5	0.5	1.7	2.7	1.7	0.9	0.8	2.7	-0.2	1.3	February
1.8	2.4	0.6	1.7	2.7	2.0	0.7	0.9	2.8	0.1	1.4	March
1.6	2.9	0.7	1.3	2.4	2.3	1.0	0.9	2.9	0.3	1.4	April
:	3.5	0.8	1.0	2.2	2.8	1.0	0.7	2.9	0.2	1.5	May

NATIONAL CONSUMER PRICE INDICES

EXPLANATORY NOTES

METHODOLOGY

The consumer price indices (CPIs) given here are the national general indices which have different names in each country; they are not harmonised*. The coverage of these general indices varies between countries as regards the proportion of the population covered (e.g. specific income groups or other categories may be excluded), the goods and services covered (e.g. owner occupiers' housing costs may be excluded) and the geographical areas covered (e.g. rural areas may be excluded). A system of fixed weighting is used in some countries, whereas others use a chain system updating weights each year. Starting with the index for January 1993 the indices for Germany and for the EUR 15 average reflect the territory after the German reunification on 3rd October 1990. The general index published by Eurostat corresponds to the general index published by the country, but it may be on a different index reference period. 1985 is the index reference period used by Eurostat for ease of comparison.

* NB : It should be noted that the figures in the first part of this publication (pp. 1-5) are based on national methodologies. Therefore they are not fully comparable one with another. The Member States of the European Union are currently working on a harmonisation project. As a first step in harmonisation, interim indices based largely on existing national CPIs have been compiled. They are published on pages 8-11 of this bulletin.

CALCULATION OF THE EUR 15 AVERAGE INDEX FROM NATIONAL CONSUMER PRICE INDICES

The EUR 15 average index is calculated by Eurostat as a weighted average of the national price indices of the 15 Member States of the European Union. The index is calculated as a chain index of the "Laspeyres" type with country weights changing each year. The weight of a Member State is its proportion of final consumption of households in the total for EUR 15. The values of final consumption in national currencies are converted into purchasing power standards (PPS) using the purchasing power parities of GDP. Since the necessary national accounts data become available only after two years, the weights are lagged by two years, e.g. the weights used for 1996 are those of 1994. Moreover, national accounts data are often revised. To avoid continuous modifications in the EUR 15 average index for previous periods, Eurostat has "frozen" the weights which are used. Thus, the EUR 15 average index will not be affected by the revisions of the national accounts.

INTERIM INDICES OF CONSUMER PRICES FOR INTERNATIONAL PRICE COMPARISONS

EXPLANATORY NOTES

METHODOLOGY

These interim indices are designed to facilitate comparison of rates of consumer price inflation across the European Union before fully harmonised indices can be produced. National Consumer Price Indices (CPIs) are not directly comparable because they are based on differences in concepts, methods and practices. A programme of work has, therefore, been instituted so that Member States will produce indices which can be directly compared with a fair degree of confidence. These indices will be called Harmonised Indices of Consumer Prices (HICPs); they will be distinct from national CPIs and will be published from February 1997. Meanwhile, it is necessary to produce a set of indices which are sufficiently comparable to permit the assessment of the Economic and Monetary Union criterion on price stability: the first convergence reports are due in 1996. For the interim indices national CPIs have been adjusted to provide measures of inflation as comparable as possible, mainly by excluding items for which major differences exist and for which comparable measures must be developed, but also by including items such as alcoholic drink and tobacco in those indices where these are not currently covered. The purposes of national CPIs and the interim indices differ and comparisons between them are not generally appropriate.

CALCULATION OF THE EUROPEAN AVERAGE OF THE INTERIM INDICES

The European average of the interim indices is calculated by Eurostat as a weighted average of the interim indices of the 15 Member States of the European Union. The method corresponds to the calculation of the EUR 15 average index from national CPIs explained on page 6. Hence, the weights used for the Member States in the calculation of the European average from the interim indices are identical to the weights used in the EUR 15 average index of national CPIs.

After the launch of the HICPs in February 1997, the European average of the interim indices will be replaced by the European Index of Consumer Prices (EICP), an average of the 15 HICPs of Member States.

INTERIM INDICES OF CONSUMER PRICES FOR INTERNATIONAL PRICE COMPARISONS

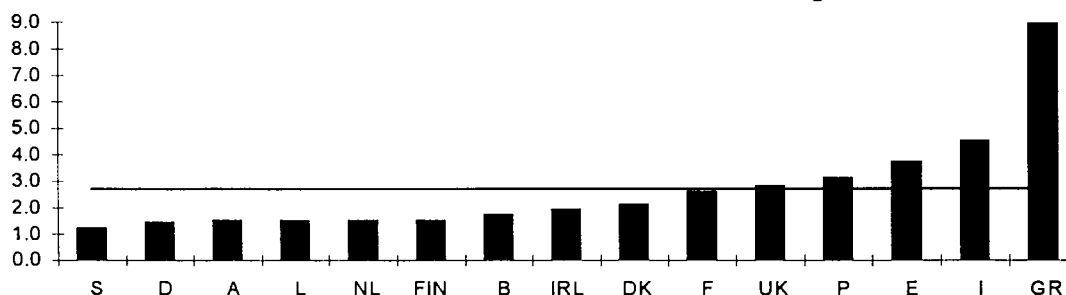
Given below are annual rates of inflation based on interim indices of consumer prices which have been constructed primarily for the European Commission and the European Monetary Institute in order that they may assess the convergence of economies preparatory to Economic and Monetary Union. The figures do not compare directly with the national CPIs given at the beginning of this bulletin which were designed for domestic purposes and will be continued to be used for such purposes. These interim indices represent the first stage in a programme of work to produce consumer price indices which are internationally comparable. Such Harmonised Indices of Consumer Prices (HICPs) will be available for international comparisons in 1997.

The criterion on price stability referred to in Article 109j of the Treaty on European Union requires that "a Member State has a price performance that is sustainable and an average rate of inflation, observed over a period of one year before the examination, that does not exceed by more than 1½ percentage points that of, at most, the three best performing Member States in terms of price stability. Inflation shall be measured by means of the consumer price index on a comparable basis, taking into account differences in national definitions". The interim indices presented here are not on a strictly comparable basis and should be used with caution. However, taken together with other information they provide a better basis for assessing convergence than the national indices. Further methodological notes are given on page 7 of this bulletin.

In ascending order of current inflation, the annual inflation rates as measured by the interim indices for the individual Member States for May to February are:

	<u>May 1996</u>	<u>April 1996</u>	<u>March 1996</u>	<u>February 1996</u>
	<u>May 1995</u>	<u>April 1995</u>	<u>March 1995</u>	<u>February 1995</u>
S	1.2 %	1.3 %	1.5 %	1.3 %
D	1.4 %	1.5 %	1.4 %	1.3 %
A	1.5 %p	2.0 %p	1.8 %	1.6 %
L	1.5 %	1.6 %	1.3 %	1.0 %
NL	1.5 %	1.6 %	1.5 %	1.2 %
FIN	1.5 %	1.2 %	1.1 %	0.9 %
B	1.7 %	1.9 %	1.7 %	1.7 %
IRL	1.9 %*	1.9 %*	2.1 %*	2.1 %*
DK	2.1 %	2.2 %	2.3 %	2.0 %
F	2.6 %	2.6 %	2.5 %	2.1 %
UK	2.8 %	3.0 %	3.0 %	3.1 %
P	3.1 %	2.6 %	2.1 %	2.3 %
E	3.7 %	3.4 %	3.4 %	3.7 %
I	4.5 %p	4.5 %p	4.4 %p	5.1 %p
GR	8.9 %	9.0 %	8.9 %	8.2 %
EU	2.7 %p	2.8 %p	2.7 %p	2.7 %p

Interim indices annual % rates
Horizontal line indicates EU average



* The index for Ireland is quarterly
p = provisional

VERBRAUCHERPREISE

Interimsindex

VERÄNDERUNG % T/T-12

CONSUMER PRICES

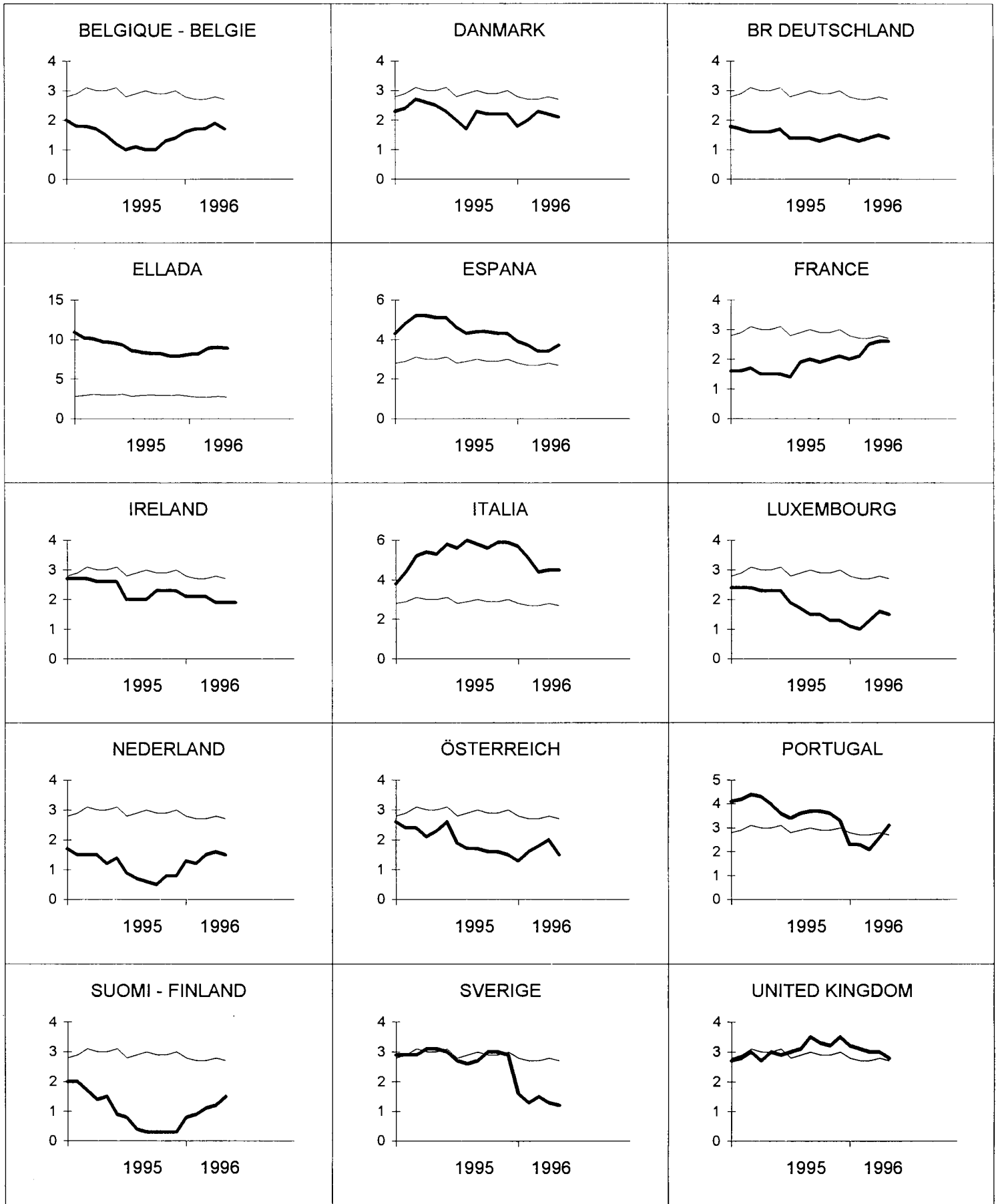
Interim Index

VARIATION % T/T-12

PRIX A LA CONSOMMATION

Indice Intérimaire

VARIATION % T/T-12



— EU

TABLE III
INTERIM INDICES OF CONSUMER PRICES FOR INTERNATIONAL PRICE COMPARISONS

	EU	B	DK	D	GR	E	F	IRL	I	L	NL
	Annual Average										1994 = 100
1994	100.0	100.0	100.0	100.0	100.0	100.0	100.0	100.0	100.0	100.0	100.0
1995	103.0	101.4	102.3	101.6	109.0	104.7	101.7	102.4	105.4	101.9	101.1
1994	Monthly Indices (NB: The index for Ireland is quarterly)										
May	100.0	99.8	100.1	100.0	99.9	99.4	100.1	100.0	99.8	99.6	100.2
June	100.2	100.1	100.1	100.2	101.0	99.5	100.1	100.0	99.9	99.6	99.8
July	100.1	100.5	99.9	100.4	99.0	99.9	100.0	100.5	100.2	100.1	99.4
August	100.4	100.7	100.4	100.4	99.3	100.6	100.0	100.5	100.2	100.2	99.9
September	100.6	100.7	100.5	100.3	102.4	100.9	100.3	100.5	100.6	100.5	101.0
October	100.8	100.6	100.7	100.4	103.6	101.1	100.5	100.7	101.1	100.7	101.1
November	100.9	100.4	100.9	100.3	104.1	101.4	100.5	100.7	101.5	101.0	100.7
December	101.1	100.5	100.8	100.4	105.3	101.8	100.5	100.7	101.7	101.1	100.2
1995											
January	101.4	100.9	101.1	100.8	104.6	102.9	100.7	101.5	102.1	101.5	100.1
February	101.9	101.0	101.6	101.2	104.1	103.4	101.0	101.5	103.0	101.7	100.7
March	102.4	101.0	101.9	101.2	107.3	104.0	101.3	101.5	104.0	101.7	101.5
April	102.8	101.1	102.3	101.4	108.7	104.5	101.4	102.6	104.5	101.7	101.6
May	103.1	101.3	102.6	101.6	109.5	104.5	101.6	102.6	105.1	101.9	101.4
June	103.2	101.3	102.4	101.9	110.4	104.6	101.6	102.6	105.7	101.9	101.2
July	103.0	101.5	101.9	101.8	107.5	104.5	101.4	102.5	105.8	102.0	100.3
August	103.3	101.8	102.1	101.8	107.6	104.9	101.9	102.5	106.2	101.9	100.6
September	103.6	101.7	102.8	101.7	110.8	105.3	102.3	102.5	106.4	102.0	101.6
October	103.7	101.6	102.9	101.7	112.1	105.5	102.4	103.0	106.8	102.2	101.6
November	103.9	101.7	103.1	101.7	112.3	105.8	102.5	103.0	107.5	102.3	101.5
December	104.1	101.9	103.0	101.9	113.6	106.2	102.6	103.0	107.7	102.4	101.0
1996											
January	104.3p	102.5	102.9	102.2	113.1	106.9	102.7	103.6	107.9p	102.6	101.4
February	104.7p	102.7	103.6	102.5	112.6	107.2	103.1	103.6	108.3p	102.7	101.9
March	105.1p	102.7	104.2	102.6	116.9	107.5	103.8	103.6	108.6p	103.0	103.0
April	105.6p	103.0	104.5	102.9	118.5	108.1	104.0	104.6	109.2p	103.3	103.2
May	105.8p	103.0	104.8	103.0	119.2	108.4	104.2	104.6	109.8p	103.4	102.9
1995	Rate of increase over 12 months										(T/T-12)
May	3.0	1.5	2.5	1.6	9.6	5.1	1.5	2.6	5.3	2.3	1.2
June	3.1	1.2	2.3	1.7	9.3	5.1	1.5	2.6	5.8	2.3	1.4
July	2.8	1.0	2.0	1.4	8.6	4.6	1.4	2.0	5.6	1.9	0.9
August	2.9	1.1	1.7	1.4	8.4	4.3	1.9	2.0	6.0	1.7	0.7
September	3.0	1.0	2.3	1.4	8.2	4.4	2.0	2.0	5.8	1.5	0.6
October	2.9	1.0	2.2	1.3	8.2	4.4	1.9	2.3	5.6	1.5	0.5
November	2.9	1.3	2.2	1.4	7.9	4.3	2.0	2.3	5.9	1.3	0.8
December	3.0	1.4	2.2	1.5	7.9	4.3	2.1	2.3	5.9	1.3	0.8
1996											
January	2.8p	1.6	1.8	1.4	8.1	3.9	2.0	2.1	5.7p	1.1	1.3
February	2.7p	1.7	2.0	1.3	8.2	3.7	2.1	2.1	5.1p	1.0	1.2
March	2.7p	1.7	2.3	1.4	8.9	3.4	2.5	2.1	4.4p	1.3	1.5
April	2.8p	1.9	2.2	1.5	9.0	3.4	2.6	1.9	4.5p	1.6	1.6
May	2.7p	1.7	2.1	1.4	8.9	3.7	2.6	1.9	4.5p	1.5	1.5

EUROSTAT

TABLE IV
INTERIM INDICES OF CONSUMER PRICES

A	P	FIN	S	UK	IS	N	CH	
100.0	100.0	100.0	100.0	100.0				
102.0	103.8	101.0	102.9	103.0				
					Annual Average			1994 = 100
99.8	99.9	99.6	100.0	100.4	100.0	100.0	100.0	1994
99.7	100.0	100.4	100.0	100.5	101.6	102.5	102.0	1995
100.0	100.2	100.4	100.0	99.8	Monthly Indices			
100.2	100.4	100.6	100.0	100.4	99.7	99.7	99.9	May
100.6	100.5	100.8	100.9	100.5	99.8	100.0	100.1	June
100.8	100.7	100.9	100.9	100.4	99.9	100.3	100.1	July
100.8	100.9	100.7	100.9	100.5	100.0	100.2	100.1	August
100.9	101.2	100.5	100.7	100.9	100.4	100.8	100.1	September
					101.2	100.8	100.0	October
101.5	102.5	100.5	101.4	101.0	100.1	100.8	100.1	November
101.6	103.1	100.9	101.8	101.6	100.2	100.8	100.0	December
101.8	103.5	100.9	102.3	102.2				1995
101.7	104.0	101.0	103.0	102.8	100.8	101.4	100.8	January
102.1	103.9	101.1	103.1	103.4	100.9	101.8	101.9	February
102.3	103.6	101.3	103.0	103.4	100.7	102.4	101.9	March
101.9	103.6	101.2	102.7	102.8	100.9	102.4	102.0	April
101.9	104.0	101.0	102.6	103.5	101.2	102.6	102.2	May
102.3	104.2	101.1	103.6	104.0	101.2	102.8	102.4	June
102.4	104.4	101.2	103.9	103.7	101.5	102.7	102.3	July
102.4	104.5	101.0	103.9	103.7	101.9	102.5	102.2	August
102.4	104.5	100.8	103.6	104.4	102.3	103.0	102.3	September
					102.9	102.9	102.1	October
102.8	104.9	101.3	103.0	104.2	102.4	102.8	102.1	November
103.2	105.5	101.8	103.1	104.8	102.3	102.8	102.1	December
103.6	105.7	102.0	103.8	105.3				1996
103.7p	106.7	102.2	104.3	105.9	102.9	102.2	102.4	January
103.6p	107.1	102.6	104.3	106.3	103.2	102.2	102.4	February
					103.4	102.6	102.7	March
					103.6	103.1	102.8	April
					104.3	103.3	102.7	May
								1995
					Rate of increase over 12 months			
					1.5	2.9	2.3	May
					1.4	2.8	2.3	June
					1.6	2.4	2.2	July
					1.9	2.3	2.1	August
					1.9	2.2	2.2	September
					1.7	2.1	2.1	October
					2.3	2.0	2.0	November
					2.1	2.0	2.1	December
								1996
					2.1	0.8	1.6	January
					2.3	0.4	0.5	February
					2.7	0.2	0.8	March
					2.7	0.7	0.8	April
					3.1	0.7	0.5	May
								1995
								1996

(T/T-12)

Rate of increase over 12 months

BELGIQUE / BELGIË

**Moniteur belge/
Belgisch Staatsblad**

Rue de Louvain 42/Leuvenseweg 42
B-1000 Bruxelles/B-1000 Brussel
Tél. (02) 512 00 26
Fax (02) 511 01 84

Jean De Lannoy

Avenue du Roi 202/Koningslaan 202
B-1060 Bruxelles/B-1060 Brussel
Tél. (02) 538 51 69
Fax (02) 538 08 41

Autres distributeurs/
Overige verkooppunten:

**Librairie européenne/
Europese boekhandel**

Rue de la Loi 244/Wetstraat 244
B-1040 Bruxelles/B-1040 Brussel
Tél. (02) 231 04 35
Fax (02) 735 08 60

Document delivery:

Credoc

Rue de la Montagne 34/Bergstraat 34
Boîte 11/Bus 11
B-1000 Bruxelles/B-1000 Brussel
Tél. (02) 511 69 41
Fax (02) 513 31 95

DANMARK

J. H. Schultz Information A/S

Herstedvang 10-12
DK-2620 Albertslund
Tlf. 43 63 23 00
Fax (Sales) 43 63 19 69
Fax (Management) 43 63 19 49

DEUTSCHLAND

Bundesanzeiger Verlag

Postfach 10 05 34
D-50445 Köln
Tel. (02 21) 20 29-0
Fax (02 21) 2 02 92 78

GREECE/ΕΛΛΑΔΑ

G.C. Eleftheroudakis SA

International Bookstore
Nikis Street 4
GR-10563 Athens
Tel. (01) 322 63 23
Fax 323 98 21

ESPAÑA

Mundi-Prensa Libros, SA

Castelló, 37
E-28001 Madrid
Tel. (91) 431 33 99 (Libros)
431 32 22 (Suscripciones)
435 36 37 (Dirección)
Fax (91) 575 39 98

Boletín Oficial del Estado

Trafalgar, 27-29
E-28071 Madrid
Tel. (91) 538 22 95
Fax (91) 538 23 49

Sucursal:

Librería Internacional AEDOS

Consejo de Ciento, 391
E-08009 Barcelona
Tel. (93) 488 34 92
Fax (93) 487 76 59

**Librería de la Generalitat
de Catalunya**

Rambla dels Estudis, 118 (Palau Moja)
E-08002 Barcelona
Tel. (93) 302 68 35
Tel. (93) 302 64 62
Fax (93) 302 12 99

FRANCE

**Journal officiel
Service des publications
des Communautés européennes**

26, rue Desaix
F-75727 Paris Cedex 15
Tél. (1) 40 58 77 01/31
Fax (1) 40 58 77 00

IRELAND

Government Supplies Agency

4-5 Harcourt Road
Dublin 2
Tel. (1) 66 13 111
Fax (1) 47 52 760

ITALIA

Licosa SpA

Via Duca di Calabria 1/1
Casella postale 552
I-50125 Firenze
Tel. (055) 64 54 15
Fax 64 12 57

GRAND-DUCHÉ DE LUXEMBOURG

Messageries du livre

5, rue Raiffeisen
L-2411 Luxembourg
Tél. 40 10 20
Fax 49 06 61

NEDERLAND

SDU Servicecentrum Uitgeverijen

Postbus 20014
2500 EA 's-Gravenhage
Tel. (070) 37 89 880
Fax (070) 37 89 783

ÖSTERREICH

**Manz'sche Verlags-
und Universitätsbuchhandlung**

Kohlmarkt 16
A-1014 Wien
Tel. (1) 531 610
Fax (1) 531 61-181

Document delivery:

Wirtschaftskammer

Wiedner Hauptstraße
A-1045 Wien
Tel. (0222) 50105-4356
Fax (0222) 50206-297

PORTUGAL

Imprensa Nacional — Casa da Moeda, EP

Rua Marquês Sá da Bandeira, 16-A
P-1099 Lisboa Codex
Tel. (01) 353 03 99
Fax (01) 353 02 94/384 01 32

**Distribuidora de Livros
Bertrand, Ld.^a**

Grupo Bertrand, SA

Rua das Terras dos Vales, 4-A
Apartado 37
P-2700 Amadora Codex
Tel. (01) 49 59 050
Fax 49 60 255

SUOMI/FINLAND

Akateeminen Kirjakauppa

Akademiska Bokhandeln
Pohjoisesplanadi 39 / Norra esplanaden 39
PL / PB 128
FIN-00101 Helsinki / Helsingfors
Tel. (90) 121 4322
Fax (90) 121 44 35

SVERIGE

BTJ AB

Traktorvägen 11
Box 200
S-221 00 Lund
Tel. (046) 18 00 00
Fax (046) 18 01 25

UNITED KINGDOM

HMSO Books (Agency section)

HMSO Publications Centre
51 Nine Elms Lane
London SW8 5DR
Tel. (0171) 873 9090
Fax (0171) 873 8463

ICELAND

**BOKABUD
LARUSAR BLÖNDAL**

Skólavörðustíg, 2
IS-101 Reykjavik
Tel. 551 56 50
Fax 552 55 60

NORGE

NIC Info a/s

Boks 6512 Etterstad
0606 Oslo
Tel. (22) 57 33 34
Fax (22) 68 19 01

SCHWEIZ/SUISSE/SVIZZERA

OSEC

Stampfenbachstraße 85
CH-8035 Zürich
Tel. (01) 365 54 49
Fax (01) 365 54 11

BÄLGARIJA

Europress Klassica BK Ltd

66, bd Vitosha
BG-1463 Sofia
Tel./Fax (2) 52 74 75

ČESKÁ REPUBLIKA

NIS ČR

Havelkova 22
CZ-130 00 Praha 3
Tel./Fax (2) 24 22 94 33

HRVATSKA

Mediatrade

P. Hatza 1
HR-4100 Zagreb
Tel./Fax (041) 43 03 92

MAGYARORSZÁG

Euro-Info-Service

Europá Ház
Margitsziget
H-1138 Budapest
Tel./Fax (1) 111 60 61, (1) 111 62 16

POLSKA

Business Foundation

ul. Krucza 38/42
PL-00-512 Warszawa
Tel. (2) 621 99 93, 628 28 82
International Fax&Phone (0-39) 12 00 77

ROMÂNIA

Euromedia

65, Strada Dionisie Lupu
RO-70184 Bucuresti
Tel./Fax 1-31 29 646

RUSSIA

CCEC

9,60-letiya Oktyabrya Avenue
117312 Moscow
Tel./Fax (095) 135 52 27

SLOVAKIA

**Slovak Technical
Library**

Nám. slobody 19
SLO-812 23 Bratislava 1
Tel. (7) 52 204 52
Fax (7) 52 957 85

CYPRUS

**Cyprus Chamber of Commerce
and Industry**

Chamber Building
38 Grivas Digenis Ave
3 Deligiorgis Street
PO Box 1455
Nicosia
Tel. (2) 44 95 00, 46 23 12
Fax (2) 36 10 44

MALTA

Miller Distributors Ltd

PO Box 25
Malta International Airport LQA 05 Malta
Tel. 66 44 88
Fax 67 67 99

TÜRKIYE

Pres AS

Dünya Infotel
TR-80050 Tünel-Istanbul
Tel. (1) 251 91 90/251 96 96
Fax (1) 251 91 97

ISRAEL

Roy International

17, Shimon Hatarssi Street
P.O.B. 13056
61130 Tel Aviv
Tel. (3) 546 14 23
Fax (3) 546 14 42

Sub-agent for the Palestinian Authority:

INDEX Information Services

PO Box 19502
Jerusalem
Tel. (2) 27 16 34
Fax (2) 27 12 19

**EGYPT/
MIDDLE EAST**

Middle East Observer

41 Sherif St.
Cairo
Tel/Fax (2) 393 97 32

**UNITED STATES OF AMERICA/
CANADA**

UNIPUB

4611-F Assembly Drive
Lanham, MD 20706-4391
Tel. Toll Free (800) 274 48 88
Fax (301) 459 00 56

CANADA

Subscriptions only
Uniquement abonnements

Renouf Publishing Co. Ltd

1294 Algoma Road
Ottawa, Ontario K1B 3W8
Tel. (613) 741 43 33
Fax (613) 741 54 39

AUSTRALIA

Hunter Publications

58A Gipps Street
Collingwood
Victoria 3066
Tel. (3) 9417 53 61
Fax (3) 9419 71 54

JAPAN

Procurement Services Int. (PSI-Japan)

Kyoku Dome Postal Code 102
Tokyo Kojimachi Post Office
Tel. (03) 32 34 69 21
Fax (03) 32 34 69 15

Sub-agent:

**Kinokuniya Company Ltd
Journal Department**

PO Box 55 Chitose
Tokyo 156
Tel. (03) 34 39-0124

SOUTH and EAST ASIA

Legal Library Services Ltd

Orchard
PO Box 0523
Singapore 9123
Tel. 243 24 98
Fax 243 24 79

SOUTH AFRICA

Safto

5th Floor, Export House
Cnr Maude & West Streets
Sandton 2146
Tel. (011) 883-3737
Fax (011) 883-6569

**ANDERE LÄNDER
OTHER COUNTRIES
AUTRES PAYS**

**Office des publications officielles
des Communautés européennes**

2, rue Mercier
L-2985 Luxembourg
Tél. 29 29-1
Télex PUBOF LU 1324 b
Fax 48 85 73, 48 68 17

Price (excl. VAT) in Luxembourg: Single copy ECU 9 • Subscription ECU 77



OFICINA DE PUBLICACIONES OFICIALES DE LAS COMUNIDADES EUROPEAS
KONTORET FOR DE EUROPÆISKE FÆLLESSKABERS OFFICIELLE PUBLIKATIONER
AMT FÜR AMTLICHE VERÖFFENTLICHUNGEN DER EUROPÄISCHEN GEMEINSCHAFTEN
ΥΠΗΡΕΣΙΑ ΕΠΙΣΗΜΩΝ ΕΚΔΟΣΕΩΝ ΤΩΝ ΕΥΡΩΠΑΪΚΩΝ ΚΟΙΝΟΤΗΤΩΝ
OFFICE FOR OFFICIAL PUBLICATIONS OF THE EUROPEAN COMMUNITIES
OFFICE DES PUBLICATIONS OFFICIELLES DES COMMUNAUTÉS EUROPÉENNES
UFFICIO DELLE PUBBLICAZIONI UFFICIALI DELLE COMUNITÀ EUROPEE
BUREAU VOOR OFFICIËLE PUBLIKATIES DER EUROPESE GEMEENSCHAPPEN
SERVIÇO DAS PUBLICAÇÕES OFICIAIS DAS COMUNIDADES EUROPEIAS

L - 2985 Luxembourg

Catalogue number: CA-CB-96-006-EN-C