



# Consumer price index

10 □ 1996 Monthly

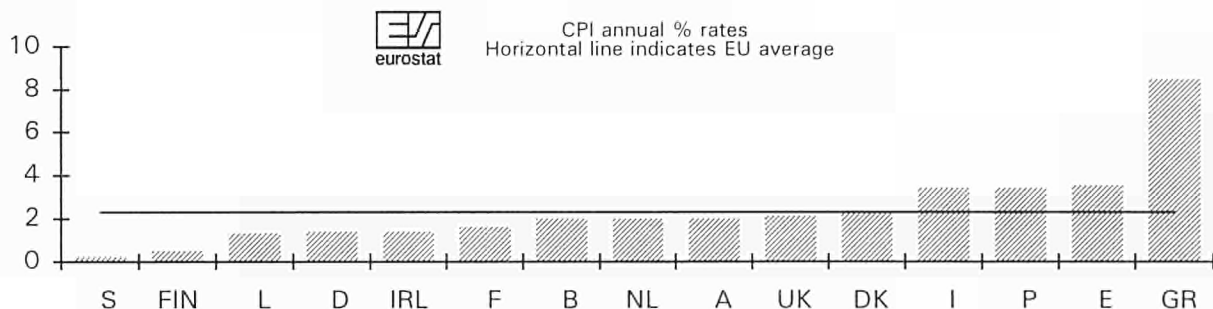
## PRICES: EU ANNUAL INFLATION STABLE AT 2.3% IN SEPTEMBER 1996

The annual inflation rate for the EU as a whole remained record low at 2.3% in September, the same as in August. A year ago, in September 1995, the corresponding rate was 3.2%.

Between August and September 1996, the index for EUR 15 increased by 0.3%. There was a large increase in Greece (+3.0%). There were moderate increases in the Netherlands (+0.9%), Sweden (+0.6%), Denmark, the United Kingdom (+0.5%), France (+0.4%), Spain and Italy (+0.3%). There were small increases in Finland (+0.2%), and Luxembourg (+0.1%). There were small decreases in Germany (-0.1%), and Belgium (-0.2%). There was a large decrease in Austria (-0.8%). The index in Portugal remained stable.

In ascending order of current inflation, the annual rates of inflation of the Member States for September and those for the corresponding period a year ago are as follows:

eurostat	September 1996	September 1995		September 1996	September 1995
	September 1995	September 1994		September 1995	September 1994
Sweden	0.2 %	2.5 %	Austria	2.0 %p	2.0 %
Finland	0.5 %	0.4 %	United Kingdom	2.1 %	3.9 %
Luxembourg	1.3 %	1.6 %	Denmark	2.3 %	2.1 %
Germany	1.4 %	1.8 %	Italy	3.4 %p	5.6 %
Ireland	1.4 %*	2.5 %*	Portugal	3.4 %	4.0 %
France	1.6 %	2.0 %	Spain	3.5 %	4.4 %
Belgium	2.0 %	1.2 %	Greece	8.5 %	8.4 %
Netherlands	2.0 %	1.5 %	EUR 15	2.3 %p	3.2 %



The corresponding annual rates of increase for some other countries are: Japan -0.4% (+0.2%), Switzerland +0.6% (+2.0%), Norway +1.3% (+2.3%), Canada +1.5% (+2.3%), Iceland +2.5% (+1.8%) and the USA +3.0% (+2.5%).

\* The index for Ireland is quarterly, August 1996/1995 and August 1995/1994  
p = provisional



OFICINA ESTADÍSTICA DE LAS COMUNIDADES EUROPEAS  
DE EUROPÆISKE FÆLLESSKABERS STATISTISKE KONTOR  
STATISTISCHES AMT DER EUROPÄISCHEN GEMEINSCHAFTEN  
ΣΤΑΤΙΣΤΙΚΗ ΥΠΗΡΕΣΙΑ ΤΩΝ ΕΥΡΩΠΑΪΚΩΝ ΚΟΙΝΟΤΗΤΩΝ  
STATISTICAL OFFICE OF THE EUROPEAN COMMUNITIES  
OFFICE STATISTIQUE DES COMMUNAUTÉS EUROPÉENNES  
ISTITUTO STATISTICO DELLE COMUNITÀ EUROPEE  
BUREAU VOOR DE STATISTIEK DER EUROPESE GEMEENSCHAPPEN  
SERVIÇO DE ESTATÍSTICA DAS COMUNIDADES EUROPEIAS

L-2920 Luxembourg — Tél. 43 01-1 — Télex COMEUR LU 3423  
B-1049 Bruxelles, rue de la Loi 200 — Tél. 299 11 11

The information included in this bulletin has been taken from the Cronos databank, which is accessible via different host companies. For all information about these host companies contact Eurostat in Luxembourg, tel. + 352 4301-34567, fax + 352 436404.

Inquiries concerning the data published in this bulletin should be addressed to:

**Ms BARBIER**

**TEL +352 4301 32419**

**FAX +352 4301 33989**

Inquiries concerning the methodologies of national CPIs and interim indices should be addressed to :

**Ms. COSTANZI**

**TEL +352 4301 33552**

**FAX +352 4301 33989**



### VERBRAUCHERPREISE

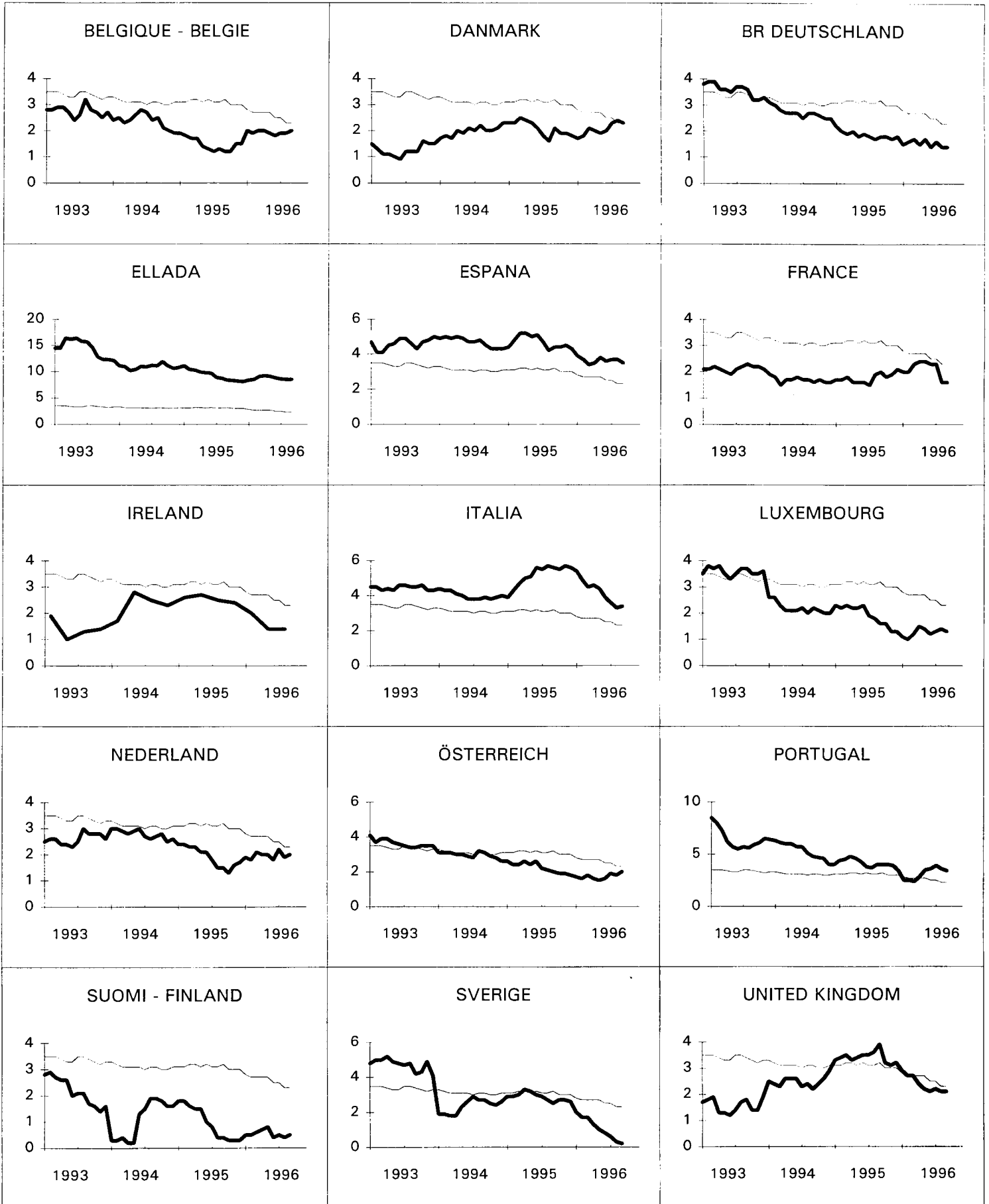
Nationaler Index  
VERÄNDERUNG % T/T-12

### CONSUMER PRICES

National Index  
VARIATION % T/T-12

### PRIX A LA CONSOMMATION

Indice National  
VARIATION % T/T-12



EUR 15

TABLE I  
NATIONAL CONSUMER PRICE INDICES

	EUR 15	B	DK	D	GR	E	F	IRL	I	L	NL
	1985 = 100										
	Annual Average										
1992	135.1	117.3	126.7	115.3	308.1	153.5	123.0	125.1	147.3	115.9	111.7
1993	139.7	120.6	128.3	119.5	352.6	160.6	125.6	126.9	153.8	120.1	114.6
1994	144.0	123.4	130.8	122.7	391.1	168.1	127.8	129.8	160.0	122.7	117.8
1995	148.5	125.3	133.6	125.0	427.4	176.0	129.9	133.2	168.3	125.1	120.1
1995	Monthly Indices										
September	149.5	125.7	134.2	125.4	434.8	177.2	130.7	:	169.9	125.3	121.0
October	149.5	125.4	134.2	125.3	439.7	177.5	130.8	:	170.5	125.5	120.9
November	149.7	125.7	134.5	125.3	440.7	178.0	130.9	133.9	171.6	125.5	120.9
December	150.0	125.8	134.4	125.6	445.2	178.4	131.0	:	171.9	125.6	120.5
1996	Monthly Indices										
January	150.3p	126.9	134.3	125.7	444.7	179.6	131.2	:	172.3p	125.9	121.1
February	150.8p	127.2	135.0	126.4	443.3	180.1	131.7	134.4	172.8p	126.0	121.5
March	151.4p	127.3	135.8	126.5	458.4	180.7	132.5	:	173.3p	126.3	122.5
April	152.0p	127.5	136.1	126.6	464.2	181.8	132.8	:	174.2p	126.6	122.6
May	152.3p	127.3	136.6	126.8	467.2	182.4	133.0	135.0	174.9p	126.7	122.4
June	152.4p	127.3	136.5	126.9	469.9	182.2	132.9	:	175.3p	126.7	121.9
July	152.3p	128.1	136.3	127.4	458.2	182.4	132.6	:	175.0p	126.8	122.4
August	152.4p	128.4	136.5	127.2	458.0	183.0	132.3	135.7	175.2p	126.9	122.3
September	152.9p	128.1	137.2	127.1	471.7	183.5	132.8	:	175.7p	127.0	123.4
1995	Rate of increase over one month										(T/T-1)
Sept./August	0.3	-0.3	0.6	-0.1	3.0	0.4	0.4	:	0.2	0.1	0.8
Oct./Sept.	0.0	-0.2	0.1	-0.1	1.1	0.2	0.1	:	0.4	0.2	-0.1
Nov./Oct.	0.1	0.3	0.2	0.0	0.2	0.3	0.1	0.1	0.6	0.0	0.0
Dec./Nov.	0.2	0.0	-0.1	0.3	1.0	0.3	0.1	:	0.2	0.1	-0.3
1996	Rate of increase over one month										
Jan./Dec.	0.2p	0.9	-0.1	0.1	-0.1	0.7	0.2	:	0.2p	0.2	0.4
Feb./Jan.	0.4p	0.2	0.6	0.5	-0.3	0.3	0.4	0.4	0.3p	0.1	0.3
March/Feb.	0.4p	0.1	0.6	0.1	3.4	0.3	0.6	:	0.3p	0.2	0.9
April/March	0.4p	0.2	0.3	0.1	1.3	0.6	0.2	:	0.5p	0.3	0.1
May/April	0.2p	-0.2	0.4	0.2	0.6	0.3	0.2	0.4	0.4p	0.1	-0.2
June/May	0.0p	0.0	-0.1	0.1	0.6	-0.1	-0.1	:	0.2p	0.0	-0.4
July/June	0.0p	0.7	-0.2	0.3	-2.5	0.1	-0.2	:	-0.2p	0.1	0.4
August/July	0.1p	0.2	0.2	-0.1	0.0	0.3	-0.3	0.5	0.1p	0.0	-0.1
Sept./August	0.3p	-0.2	0.5	-0.1	3.0	0.3	0.4	:	0.3p	0.1	0.9
1995	Rate of increase over 12 months										(T/T-12)
September	3.2	1.2	2.1	1.8	8.4	4.4	2.0	:	5.6	1.6	1.5
October	3.0	1.2	1.9	1.8	8.3	4.4	1.8	:	5.5	1.6	1.3
November	3.0	1.5	1.9	1.7	8.2	4.5	1.9	2.4	5.7	1.3	1.6
December	3.0	1.5	1.8	1.8	8.1	4.3	2.1	:	5.6	1.3	1.7
1996	Rate of increase over 12 months										
January	2.8p	2.0	1.7	1.5	8.4	3.9	2.0	:	5.4p	1.1	1.9
February	2.7p	1.9	1.8	1.6	8.5	3.7	2.0	2.0	4.9p	1.0	1.8
March	2.7p	2.0	2.1	1.7	9.1	3.4	2.3	:	4.5p	1.2	2.1
April	2.7p	2.0	2.0	1.5	9.2	3.5	2.4	:	4.6p	1.5	2.0
May	2.7p	1.9	1.9	1.7	9.1	3.8	2.4	1.4	4.4p	1.4	2.0
June	2.5p	1.8	2.0	1.4	8.8	3.6	2.3	:	3.9p	1.2	1.8
July	2.5p	1.9	2.3	1.6	8.6	3.7	2.3	:	3.6p	1.3	2.2
August	2.3p	1.9	2.4	1.4	8.5	3.7	1.6	1.4	3.3p	1.4	1.9
September	2.3p	2.0	2.3	1.4	8.5	3.5	1.6	:	3.4p	1.3	2.0

TABLE II  
NATIONAL CONSUMER PRICE INDICES



A	P	FIN	S	UK	IS	N	CH	USA	JAP	CAN	
					Annual Average 1985 = 100						
119.7	206.7	136.7	151.1	146.4	278.1	143.3	124.6	130.5	112.3	133.4	1992
124.0	220.0	139.7	158.2	148.7	289.5	146.5	128.7	134.3	113.8	135.8	1993
127.7	231.5	141.2	161.6	152.4	294.0	148.6	129.8	137.8	114.6	136.1	1994
130.5	241.1	142.6	165.7	157.6	298.8	152.2	132.2	141.7	114.4	139.0	1995
					Monthly Indices						1995
131.1	242.1	142.9	166.6	159.2	300.7	153.0	132.7	142.5	115.0	139.4	September
130.7	243.0	142.9	167.1	158.3	302.1	153.0	132.5	142.9	114.4	139.3	October
130.6	243.2	142.5	167.0	158.3	301.0	152.9	132.4	142.8	114.2	139.6	November
130.5	242.7	142.4	166.5	159.3	300.8	152.9	132.4	142.7	114.3	139.4	December
											1996
131.2	243.4	142.6	166.2	158.8	302.1	152.2	132.8	143.6	114.2	139.7	January
131.8	245.1	143.1	166.4	159.5	302.6	152.3	133.1	144.0	114.0	140.0	February
132.4	246.1	143.3	167.2	160.1	303.1	153.0	133.3	144.8	114.2	140.5	March
132.3	248.3	143.5	167.5	161.3	303.6	153.5	133.4	145.3	114.9	140.9	April
132.1	249.5	143.8	167.3	161.6	305.5	153.7	132.9	145.6	115.1	141.3	May
132.8	249.2	143.8	166.7	161.7	305.2	153.9	133.2	145.7	114.5	141.2	June
134.0	249.7	143.7	166.3	161.1	305.5	154.5	133.0	146.0	114.7	141.2	July
134.8	250.4	143.4	165.5	161.8	307.4	154.4	133.3	146.3	114.4	141.3	August
133.7p	250.4	143.7	166.5	162.6	308.1	155.1	133.4	146.7	114.6	141.5	September
					Rate of increase over one month (T/T-1)						1995
-0.9	0.2	0.1	0.7	0.5	0.3	0.6	0.1	0.2	0.7	0.1	Sept./August
-0.3	0.4	0.0	0.3	-0.5	0.5	0.0	-0.1	0.3	-0.5	-0.1	Oct./Sept.
-0.1	0.1	-0.3	0.0	0.0	-0.3	-0.1	-0.1	-0.1	-0.2	0.2	Nov./Oct.
-0.1	-0.2	-0.1	-0.3	0.6	-0.1	0.0	0.0	-0.1	0.1	-0.1	Dec./Nov.
											1996
0.5	0.3	0.2	0.1	-0.3	0.4	-0.5	0.3	0.6	-0.1	0.2	Jan./Dec.
0.5	0.7	0.4	0.1	0.5	0.2	0.0	0.2	0.3	-0.2	0.1	Feb./Jan.
0.5	0.4	0.1	0.5	0.4	0.2	0.5	0.1	0.5	0.2	0.4	March/Feb.
-0.1	0.9	0.2	0.2	0.7	0.2	0.3	0.1	0.4	0.6	0.3	April/March
-0.2	0.5	0.2	-0.1	0.2	0.6	0.2	-0.4	0.2	0.2	0.3	May/April
0.5	-0.1	0.0	-0.4	0.1	-0.1	0.1	0.2	0.1	-0.5	-0.1	June/May
0.9	0.2	-0.1	-0.2	-0.4	0.1	0.4	-0.1	0.2	0.1	0.0	July/June
0.5	0.3	-0.2	-0.5	0.5	0.6	-0.1	0.3	0.2	-0.2	0.1	August/July
-0.8p	0.0	0.2	0.6	0.5	0.2	0.5	0.1	0.3	0.2	0.1	Sept./August
					Rate of increase over 12 months (T/T-12)						1995
2.0	4.0	0.4	2.5	3.9	1.8	2.3	2.0	2.5	0.2	2.3	September
1.9	4.0	0.3	2.7	3.2	2.4	2.3	1.9	2.8	-0.7	2.4	October
1.9	3.9	0.3	2.7	3.1	2.1	2.1	1.9	2.6	-0.7	2.1	November
1.8	3.4	0.3	2.6	3.2	2.0	2.2	1.9	2.5	-0.3	1.7	December
											1996
1.7	2.5	0.5	2.0	2.9	1.6	1.2	1.5	2.7	-0.4	1.6	January
1.6	2.5	0.5	1.7	2.7	1.7	0.9	0.8	2.7	-0.2	1.3	February
1.8	2.4	0.6	1.7	2.7	2.0	0.7	0.9	2.8	0.1	1.4	March
1.6	2.9	0.7	1.3	2.4	2.3	1.0	0.9	2.9	0.3	1.4	April
1.5	3.5	0.8	1.0	2.2	2.8	1.0	0.7	2.9	0.2	1.5	May
1.6	3.6	0.4	0.8	2.1	2.6	0.9	0.7	2.8	-0.2	1.4	June
1.9	3.9	0.5	0.6	2.2	2.4	1.3	0.7	3.0	0.6	1.2	July
1.8	3.6	0.4	0.3	2.1	2.6	1.5	0.6	2.9	0.1	1.4	August
2.0p	3.4	0.5	0.2	2.1	2.5	1.3	0.6	3.0	-0.4	1.5	September

# NATIONAL CONSUMER PRICE INDICES

## EXPLANATORY NOTES

### METHODOLOGY

The consumer price indices (CPIs) given here are the national general indices which have different names in each country; they are not harmonised\*. The coverage of these general indices varies between countries as regards the proportion of the population covered (e.g. specific income groups or other categories may be excluded), the goods and services covered (e.g. owner occupiers' housing costs may be excluded) and the geographical areas covered (e.g. rural areas may be excluded). A system of fixed weighting is used in some countries, whereas others use a chain system updating weights each year. Starting with the index for January 1993 the indices for Germany and for the EUR 15 average reflect the territory after the German reunification on 3rd October 1990. The general index published by Eurostat corresponds to the general index published by the country, but it may be on a different index reference period. 1985 is the index reference period used by Eurostat for ease of comparison.

\* NB : It should be noted that the figures in the first part of this publication (pp. 1-5) are based on national methodologies. Therefore they are not fully comparable one with another. The Member States of the European Union are currently working on a harmonisation project. As a first step in harmonisation, interim indices based largely on existing national CPIs have been compiled. They are published on pages 8-11 of this bulletin.

### CALCULATION OF THE EUR 15 AVERAGE INDEX FROM NATIONAL CONSUMER PRICE INDICES

The EUR 15 average index is calculated by Eurostat as a weighted average of the national price indices of the 15 Member States of the European Union. The index is calculated as a chain index of the "Laspeyres" type with country weights changing each year. The weight of a Member State is its proportion of final consumption of households in the total for EUR 15. The values of final consumption in national currencies are converted into purchasing power standards (PPS) using the purchasing power parities of GDP. Since the necessary national accounts data become available only after two years, the weights are lagged by two years, e.g. the weights used for 1996 are those of 1994. Moreover, national accounts data are often revised. To avoid continuous modifications in the EUR 15 average index for previous periods, Eurostat has "frozen" the weights which are used. Thus, the EUR 15 average index will not be affected by the revisions of the national accounts.

# **INTERIM INDICES OF CONSUMER PRICES FOR INTERNATIONAL PRICE COMPARISONS**

## **EXPLANATORY NOTES**

### **METHODOLOGY**

These interim indices are designed to facilitate comparison of rates of consumer price inflation across the European Union before fully harmonised indices can be produced. National Consumer Price Indices (CPIs) are not directly comparable because they are based on differences in concepts, methods and practices. A programme of work has, therefore, been instituted so that Member States will produce indices which can be directly compared with a fair degree of confidence. These indices will be called Harmonised Indices of Consumer Prices (HICPs); they will be distinct from national CPIs and will be published from February 1997. Meanwhile, it is necessary to produce a set of indices which are sufficiently comparable to permit the assessment of the Economic and Monetary Union criterion on price stability: the first convergence reports are due in 1996. For the interim indices national CPIs have been adjusted to provide measures of inflation as comparable as possible, mainly by excluding items for which major differences exist and for which comparable measures must be developed, but also by including items such as alcoholic drink and tobacco in those indices where these are not currently covered. The purposes of national CPIs and the interim indices differ and comparisons between them are not generally appropriate.

### **CALCULATION OF THE EUROPEAN AVERAGE OF THE INTERIM INDICES**

The European average of the interim indices is calculated by Eurostat as a weighted average of the interim indices of the 15 Member States of the European Union. The method corresponds to the calculation of the EUR 15 average index from national CPIs explained on page 6. Hence, the weights used for the Member States in the calculation of the European average from the interim indices are identical to the weights used in the EUR 15 average index of national CPIs.

After the launch of the HICPs in February 1997, the European average of the interim indices will be replaced by the European Index of Consumer Prices (EICP), an average of the 15 HICPs of Member States.

## INTERIM INDICES OF CONSUMER PRICES FOR INTERNATIONAL PRICE COMPARISONS

Given below are annual rates of inflation based on interim indices of consumer prices which have been constructed primarily for the European Commission and the European Monetary Institute in order that they may assess the convergence of economies preparatory to Economic and Monetary Union. The figures do not compare directly with the national CPIs given at the beginning of this bulletin which were designed for domestic purposes and will be continued to be used for such purposes. These interim indices represent the first stage in a programme of work to produce consumer price indices which are internationally comparable. Such Harmonised Indices of Consumer Prices (HICPs) will be available for international comparisons in 1997.

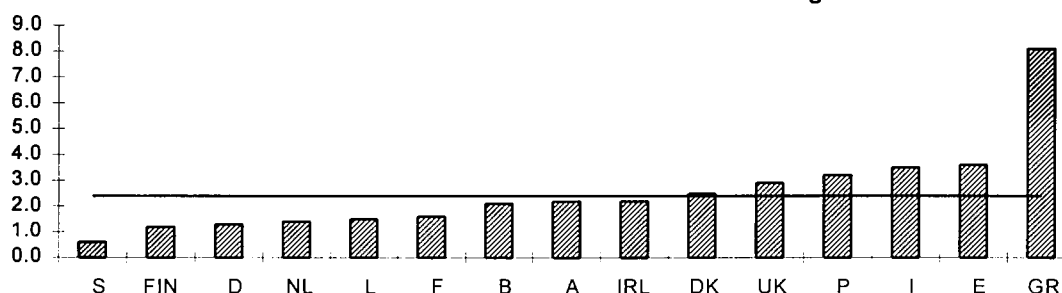
The criterion on price stability referred to in Article 109j of the Treaty on European Union requires that "a Member State has a price performance that is sustainable and an average rate of inflation, observed over a period of one year before the examination, that does not exceed by more than 1½ percentage points that of, at most, the three best performing Member States in terms of price stability. Inflation shall be measured by means of the consumer price index on a comparable basis, taking into account differences in national definitions". The interim indices presented here are not on a strictly comparable basis and should be used with caution. However, taken together with other information they provide a better basis for assessing convergence than the national indices. Further methodological notes are given on page 7 of this bulletin.

In ascending order of current inflation, the annual inflation rates as measured by the interim indices for the individual Member States for September to June are:

eurostat	September 1996	August 1996	July 1996	June 1996
	September 1995	August 1995	July 1995	June 1995
S	0.6 %	0.8 %	1.0 %	1.0 %
FIN	1.2 %	1.1 %	1.1 %	1.2 %
D	1.3 %	1.2 %	1.4 %	1.1 %
NL	1.4 %	1.3 %	1.7 %	1.1 %
L	1.5 %	1.5 %	1.4 %	1.4 %
F	1.6 %	1.7 %	2.4 %	2.4 %
B	2.1 %	2.0 %	1.9 %	1.7 %
A	2.2 %p	2.2 %	2.1 %	1.7 %
IRL	2.2 %*	2.2 %*	2.2 %*	1.9 %*
DK	2.5 %	2.5 %	2.6 %	2.2 %
UK	2.9 %	2.8 %	2.9 %	2.9 %
P	3.2 %	3.5 %	3.5 %	3.3 %
I	3.5 %p	3.5 %p	3.7 %p	4.0 %p
E	3.6 %	3.7 %	3.7 %	3.5 %
GR	8.1 %	8.3 %	8.4 %	8.5 %
EU	2.4 %p	2.4 %p	2.6 %p	2.5 %p



**Interim indices annual % rates**  
Horizontal line indicates EU average



\* The index for Ireland is quarterly  
p = provisional





VERBRAUCHERPREISE

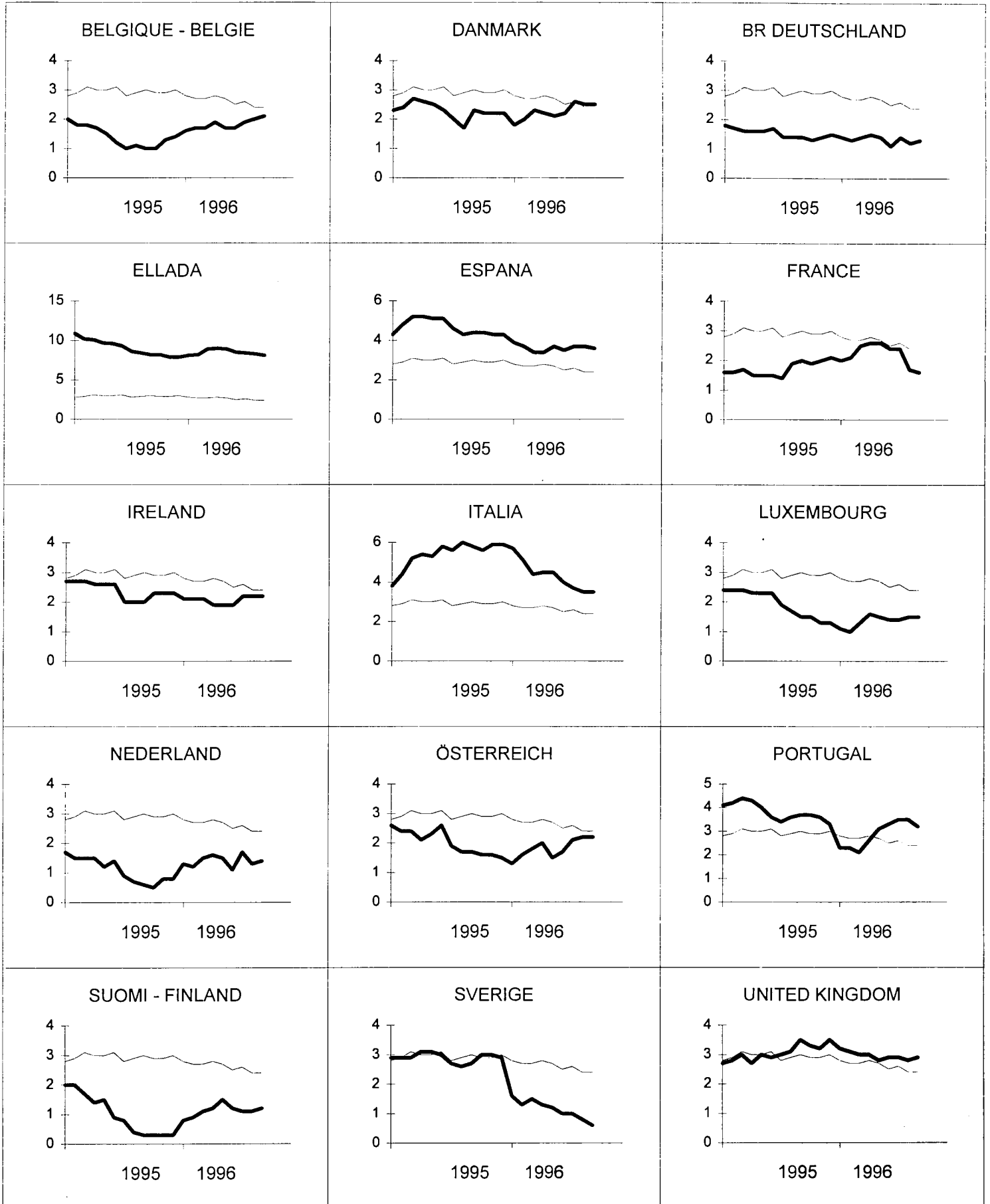
Interimsindex  
VERÄNDERUNG % T/T-12

CONSUMER PRICES

Interim Index  
VARIATION % T/T-12

PRIX A LA CONSOMMATION

Indice Intérimaire  
VARIATION % T/T-12



— EU

TABLE III  
INTERIM INDICES OF CONSUMER PRICES FOR INTERNATIONAL PRICE COMPARISONS

	EU	B	DK	D	GR	E	F	IRL	I	L	NL
	1994 = 100										
	Annual Average										
1994	100.0	100.0	100.0	100.0	100.0	100.0	100.0	100.0	100.0	100.0	100.0
1995	103.0	101.4	102.3	101.6	109.0	104.7	101.7	102.4	105.4	101.9	101.1
1994	Monthly Indices (NB: The index for Ireland is quarterly)										
September	100.6	100.7	100.5	100.3	102.4	100.9	100.3	100.5	100.6	100.5	101.0
October	100.8	100.6	100.7	100.4	103.6	101.1	100.5	100.7	101.1	100.7	101.1
November	100.9	100.4	100.9	100.3	104.1	101.4	100.5	100.7	101.5	101.0	100.7
December	101.1	100.5	100.8	100.4	105.3	101.8	100.5	100.7	101.7	101.1	100.2
1995											
January	101.4	100.9	101.1	100.8	104.6	102.9	100.7	101.5	102.1	101.5	100.1
February	101.9	101.0	101.6	101.2	104.1	103.4	101.0	101.5	103.0	101.7	100.7
March	102.4	101.0	101.9	101.2	107.3	104.0	101.3	101.5	104.0	101.7	101.5
April	102.8	101.1	102.3	101.4	108.7	104.5	101.4	102.6	104.5	101.7	101.6
May	103.1	101.3	102.6	101.6	109.5	104.5	101.6	102.6	105.1	101.9	101.4
June	103.2	101.3	102.4	101.9	110.4	104.6	101.6	102.6	105.7	101.9	101.2
July	103.0	101.5	101.9	101.8	107.5	104.5	101.4	102.5	105.8	102.0	100.3
August	103.3	101.8	102.1	101.8	107.6	104.9	101.9	102.5	106.2	101.9	100.6
September	103.6	101.7	102.8	101.7	110.8	105.3	102.3	102.5	106.4	102.0	101.6
October	103.7	101.6	102.9	101.7	112.1	105.5	102.4	103.0	106.8	102.2	101.6
November	103.9	101.7	103.1	101.7	112.3	105.8	102.5	103.0	107.5	102.3	101.5
December	104.1	101.9	103.0	101.9	113.6	106.2	102.6	103.0	107.7	102.4	101.0
1996											
January	104.3p	102.5	102.9	102.2	113.1	106.9	102.7	103.6	107.9p	102.6	101.4
February	104.7p	102.7	103.6	102.5	112.6	107.2	103.1	103.6	108.3p	102.7	101.9
March	105.1p	102.7	104.2	102.6	116.9	107.5	103.8	103.6	108.6p	103.0	103.0
April	105.6p	103.0	104.5	102.9	118.5	108.1	104.0	104.6	109.2p	103.3	103.2
May	105.8p	103.0	104.8	103.0	119.2	108.4	104.2	104.6	109.8p	103.4	102.9
June	105.8p	103.0	104.7	103.0	119.8	108.3	104.0	104.6	109.9p	103.3	102.3
July	105.6p	103.4	104.5	103.2	116.5	108.4	103.8	104.8	109.7p	103.4	102.0
August	105.7p	103.8	104.7	103.0	116.5	108.8	103.6	104.8	109.9p	103.4	101.9
September	106.1p	103.8	105.4	103.0	119.8	109.1	103.9	104.8	110.1p	103.5	103.0
1995	Rate of increase over 12 months										(T/T-12)
September	3.0	1.0	2.3	1.4	8.2	4.4	2.0	2.0	5.8	1.5	0.6
October	2.9	1.0	2.2	1.3	8.2	4.4	1.9	2.3	5.6	1.5	0.5
November	2.9	1.3	2.2	1.4	7.9	4.3	2.0	2.3	5.9	1.3	0.8
December	3.0	1.4	2.2	1.5	7.9	4.3	2.1	2.3	5.9	1.3	0.8
1996											
January	2.8p	1.6	1.8	1.4	8.1	3.9	2.0	2.1	5.7p	1.1	1.3
February	2.7p	1.7	2.0	1.3	8.2	3.7	2.1	2.1	5.1p	1.0	1.2
March	2.7p	1.7	2.3	1.4	8.9	3.4	2.5	2.1	4.4p	1.3	1.5
April	2.8p	1.9	2.2	1.5	9.0	3.4	2.6	1.9	4.5p	1.6	1.6
May	2.7p	1.7	2.1	1.4	8.9	3.7	2.6	1.9	4.5p	1.5	1.5
June	2.5p	1.7	2.2	1.1	8.5	3.5	2.4	1.9	4.0p	1.4	1.1
July	2.6p	1.9	2.6	1.4	8.4	3.7	2.4	2.2	3.7p	1.4	1.7
August	2.4p	2.0	2.5	1.2	8.3	3.7	1.7	2.2	3.5p	1.5	1.3
September	2.4p	2.1	2.5	1.3	8.1	3.6	1.6	2.2	3.5p	1.5	1.4

## INTERIM INDICES OF CONSUMER PRICES

A	P	FIN	S	UK	IS	N	CH		
					Annual Average			1994 = 100	
100.0	100.0	100.0	100.0	100.0	100.0	100.0	100.0	1994	
102.0	103.8	101.0	102.9	103.0	101.6	102.5	102.0	1995	
					Monthly Indices				
100.6	100.5	100.8	100.9	100.5	100.4	100.8	100.1	September	
100.8	100.7	100.9	100.9	100.4	101.2	100.8	100.0	October	
100.8	100.9	100.7	100.9	100.5	100.1	100.8	100.1	November	
100.9	101.2	100.5	100.7	100.9	100.2	100.8	100.0	December	
								1995	
101.5	102.5	100.5	101.4	101.0	100.8	101.4	100.8	January	
101.6	103.1	100.9	101.8	101.6	100.9	101.8	101.9	February	
101.8	103.5	100.9	102.3	102.2	100.7	102.4	101.9	March	
101.7	104.0	101.0	103.0	102.8	100.9	102.4	102.0	April	
102.1	103.9	101.1	103.1	103.4	101.2	102.6	102.2	May	
102.3	103.6	101.3	103.0	103.4	101.2	102.8	102.4	June	
101.9	103.6	101.2	102.7	102.8	101.5	102.7	102.3	July	
101.9	104.0	101.0	102.6	103.5	101.9	102.5	102.2	August	
102.3	104.2	101.1	103.6	104.0	102.3	103.0	102.3	September	
102.4	104.4	101.2	103.9	103.7	102.9	102.9	102.1	October	
102.4	104.5	101.0	103.9	103.7	102.4	102.8	102.1	November	
102.4	104.5	100.8	103.6	104.4	102.3	102.8	102.1	December	
								1996	
102.8	104.9	101.3	103.0	104.2	102.9	102.2	102.4	January	
103.2	105.5	101.8	103.1	104.8	103.2	102.2	102.4	February	
103.6	105.7	102.0	103.8	105.3	103.4	102.6	102.7	March	
103.7	106.7	102.2	104.3	105.9	103.6	103.1	102.8	April	
103.6	107.1	102.6	104.3	106.3	104.3	103.3	102.7	May	
104.0	107.0	102.5	104.0	106.4	104.3	103.4	102.9	June	
104.0	107.2	102.3	103.7	105.8	104.3	103.9	102.7	July	
104.1	107.6	102.1	103.4	106.4	104.9	103.7	102.6	August	
104.5p	107.5	102.3	104.2	107.0	104.9	104.1	102.6	September	
								1995	
					Rate of increase over 12 months				
					1.9	2.2	2.2	September	
					1.7	2.1	2.1	October	
					2.3	2.0	2.0	November	
					2.1	2.0	2.1	December	
								1996	
					2.1	0.8	1.6	January	
					2.3	0.4	0.5	February	
					2.7	0.2	0.8	March	
					2.7	0.7	0.8	April	
					3.1	0.7	0.5	May	
					3.1	0.6	0.5	June	
					2.8	1.2	0.4	July	
					2.9	1.2	0.4	August	
					2.5	1.1	0.3	September	
								(T/T-12)	
					1.7	3.7	0.3	2.7	3.5
					1.6	3.7	0.3	3.0	3.3
					1.6	3.6	0.3	3.0	3.2
					1.5	3.3	0.3	2.9	3.5
					1.3	2.3	0.8	1.6	3.2
					1.6	2.3	0.9	1.3	3.1
					1.8	2.1	1.1	1.5	3.0
					2.0	2.6	1.2	1.3	3.0
					1.5	3.1	1.5	1.2	2.8
					1.7	3.3	1.2	1.0	2.9
					2.1	3.5	1.1	1.0	2.9
					2.2	3.5	1.1	0.8	2.8
					2.2p	3.2	1.2	0.6	2.9







**BELGIQUE/BELGIE**

**Moniteur belge/Belgisch Staatsblad**

Rue de Louvain 40-42/  
Leuvenseweg 40-42  
B-1000 Bruxelles/Brussel  
Tél. (32-2) 552 22 11  
Fax (32-2) 511 01 84

**Jean De Lannoy**

Avenue du Roi 202/  
Koningslaan 202  
B-1060 Bruxelles/Brussel  
Tél. (32-2) 538 51 69  
Fax (32-2) 538 08 41  
e-mail: jean.de.lannoy@infoboard.be

**Librairie européenne/  
Europese Boekhandel**

Rue de la Loi 244/  
Wetstraat 244  
B-1040 Bruxelles/Brussel  
Tél. (32-2) 295 26 39  
Fax (32-2) 735 08 60

**DANMARK**

**J. H. Schultz Information A/S**

Herstedvang 10-12  
DK-2620 Albertslund  
Tlf. (45) 43 63 23 00  
Fax (45) 43 63 19 69  
e-mail: schultz@schultz.dk

**DEUTSCHLAND**

**Bundesanzeiger Verlag**

Breite Straße 78-80  
Postfach 10 05 34  
D-50667 Köln  
Tel. (49-221) 20 29-0  
Fax (49-221) 20 29 278

**GREECE/ELLADA**

**G.C. Eleftheroudakis SA**

International Bookstore  
Paniotismiou 17  
GR-105 64 Athens  
Tel. (30-1) 331 41 82  
Fax (30-1) 323 98 21

**ESPANA**

**Mundi Prensa Libros, SA**

Castello, 37  
E-28001 Madrid  
Tel. (34-1) 431 33 99/431 32 22/435 36 37  
Fax (34-1) 575 39 98  
e-mail: mundiprensa@tsai.es

**Boletín Oficial del Estado**

Trafalgar 27-29  
E-28010 Madrid  
Tel. (34-1) 538 22 95/538 22 97  
Fax (34-1) 538 22 67

Sucursal:

**Mundi Prensa Barcelona**

Conseil de Cent, 391  
E-08009 Barcelona  
Tel. (34-3) 488 34 92  
Fax (34-3) 487 76 59

**Libreria de la Generalitat de Catalunya**

Rambla dels Estudis, 118  
Palau Moja  
E-08002 Barcelona  
Tel. (34-3) 302 68 35/302 64 62  
Fax (34-3) 302 12 99

**FRANCE**

**Journal officiel**

Service des publications des CE  
26, rue Desaix  
F-75727 Paris Cedex 15  
Tél. (33-1) 40 58 77 01/31  
Fax (33-1) 40 58 77 00

**IRELAND**

**Government Supplies Agency**

Publications Section  
4-5 Harcourt Road  
Dublin 2  
Tel. (353-1) 661 31 11  
Fax (353-1) 475 27 60

**ITALIA**

**Licosa SpA**

Via Duca di Calabria 1/1  
Casella postale 552  
I-50125 Firenze  
Tel. (39-55) 64 54 15  
Fax (39-55) 64 12 57  
e-mail: licosa@ftbcc.it

**GRAND-DUCHÉ DE LUXEMBOURG**

**Messageries du livre Sari**

5, rue Raiffeisen  
L-2411 Luxembourg  
Tél. (352) 40 10 20  
Fax (352) 490 661  
e-mail: mdl@pt.lu

Abonnements:

**Messageries Paul Kraus**

11, rue Christophe Plantin  
L-2339 Luxembourg  
Tel. (352) 499 88 88  
Fax (352) 499 888 444  
e-mail: mpk@pt.lu

**NEDERLAND**

**SDU Uitgeverijen**

Externe Fondsen  
Christoffel Plantijnstraat 2  
Postbus 20014  
2500 EA 's-Gravenhage  
Tel. (31-70) 378 98 80  
Fax (31-70) 378 97 83

**ÖSTERREICH**

**Manz'sche Verlags-  
und Universitätsbuchhandlung GmbH**

Siebenbrunnengasse 21  
Postfach 1  
A-1050 Wien  
Tel. (43-1) 53 161 (334 oder 340)  
Fax (43-1) 53 161 (339)  
e-mail: auslieferung@manz.co.at

**PORTUGAL**

**Imprensa Nacional-Casa da Moeda, EP**

Rua Marquês de Sá da Bandeira, 16 A  
P-1050 Lisboa Codex  
Tel. (351-1) 353 03 99  
Fax (351-1) 353 02 94/384 01 32

**Distribuidora de Livros**

Bertrand Ld.\*  
Grupo Bertrand, SA  
Rua das Terras dos Vales, 4-A  
Apartado 60037  
P-2700 Amadora Codex  
Tel. (351-1) 495 90 50/495 87 87  
Fax (351-1) 496 02 55

**SUOMI/FINLAND**

**Akateeminen Kirjakauppa /  
Akademiska Bokhandeln**

Pohjoisesplanadi 39/  
Norra esplanaden 39  
PL/PB 128  
FIN-00101 Helsinki/Helsingfors  
Tel. (358) 121 41  
Fax (358) 121 44 35  
e-mail: akatilaus@stockmann.mailnet.fi

**SVERIGE**

**BTJ AB**

Traktorvägen 11  
PO Box 200  
S-221 00 LUND  
Tel. (46) 18 00 00  
Fax (46) 18 01 25

**UNITED KINGDOM**

**HMSO Books (Agency Section)**

HMSO Publications Centre  
51, Nine Elms Lane  
London SW8 5DR  
Tel. (44-171) 873 9090  
Fax (44-171) 873 8463

**ICELAND**

**Bokabud Larusar Blöndal**

Skólavörðustíg, 2  
IS-101 Reykjavík  
Tel. (354) 55 15 650  
Fax (354) 55 25 560

**NORGE**

**NIC Info A/S**

Bertrand Narvesens vei 2  
Boks 6512 Etterstad  
N-0606 Oslo  
Tel. (47-22) 57 33 34  
Fax (47-22) 68 19 01

**SCHWEIZ/SUISSE/SVIZZERA**

**OSEC**

Stampfenbachstraße 85  
CH-8035 Zürich  
Tel. (41-1) 365 54 54  
Fax (41-1) 365 54 11  
e-mail: urs.leimbacher@ecs.osec.inet.ch

**BÄLGARIJA**

**Europress Klassica Bk Ltd**

76, Gurko Street  
BG-1463 Sofia  
Tel. (359-2) 81 64 73  
Fax (359-2) 81 64 73

**ČESKÁ REPUBLIKA**

**NIS ČR - prodejná**

Konviktská 5  
CZ-113 57 Praha 1  
Tel. (42-2) 24 22 94 33/24 23 09 07  
Fax (42-2) 24 22 94 33  
e-mail: nkpostp@dec.nis.cz

**HRVATSKA**

**Mediatrade Ltd**

Pavla Hatza 1  
HR-4100 Zagreb  
Tel. (38-1) 43 03 92  
Fax (38-1) 44 40 59

**MAGYARORSZAG**

**Euro Info Service**

Európa Ház  
Margitsziget  
H-1138 Budapest  
Tel. (36-1) 11 16 061 11 16 216  
Fax (36-1) 302 50 35

**POLSKA**

**Business Foundation**

ul. Krucza 38/42  
PL-00-512 Warszawa  
Tel. (48-22) 621 99 93/628 28 82  
Fax (48-22) 621 97 61- Free line (0-39) 12 00 77

**ROMÂNIA**

**Euromedia**

Str. G-ral Berthelot Nr 41  
RO-70749 Bucuresti  
Tel. (41) 210 44 01/614 06 64  
Fax (41) 210 44 01

**RUSSIA**

**CCEC**

9,60-letiya Oktyabrya Av.  
117312 Moscow  
Tel. (095) 135 52 27  
Fax (095) 135 52 27

**SLOVAKIA**

**Slovenska Technicka Kniznica**

Namestie slobody 19  
SLO-81223 Bratislava 1  
Tel. (42-7) 53 18 364  
Fax (42-7) 53 18 364  
e-mail: europ@tbb1.sltk.stuba.sk

**MALTA**

**Miller Distributors Ltd**

Malta International Airport  
PO Box 25  
LQA 05 Malta  
Tel. (356) 66 44 88  
Fax (356) 67 67 99

**TURKIYE**

**Dünya Infotel A.S.**

İstiklal Caddesi No 469  
TR-80050 Tunel-Istanbul  
Tel. (90-212) 251 91 96 / 427 02 10  
Fax (90-212) 251 91 97

**ISRAEL**

**R.O.Y. International**

17, Shimon Hatarssi Street  
PO Box 13056  
61130 Tel Aviv  
Tel. (972-3) 546 14 23  
Fax (972-3) 546 14 42  
e-mail: royil@netvision.net.il

Sub-agent for the Palestinian Authority:

**Index Information Services**

PO Box 19502  
Jerusalem  
Tel. (972-2) 27 16 34  
Fax (972-2) 27 12 19

**EGYPT**

**The Middle East Observer**

41, Sherif Street  
Cairo  
Tel. (20-2) 39 26 919  
Fax (20-2) 39 39 732

**UNITED STATES OF AMERICA**

**Unipub**

4611-F Assembly Drive  
MD20706 Lanham  
Tel. (800) 274-4888 (toll free telephone)  
Fax (800) 865-3450 (toll free fax)

**CANADA**

Uniquement abonnements/  
Subscriptions only:

**Renouf Publishing Co. Ltd**

1294 Algoma Road  
K1B 3W8 Ottawa, Ontario  
Tel. (1-613) 741 73 33  
Fax (1-613) 741 54 39  
e-mail: renouf@fox.nstn.ca  
For monographs see: Unipub

**AUSTRALIA**

**Hunter Publications**

PO Box 404  
3167 Abbotsford, Victoria  
Tel. (3) 9417 53 61  
Fax (3) 9419 71 54

**JAPAN**

**PSI-Japan**

Kyoku Dome, Tokyo Kojimachi P.O.  
Tokyo 102  
Tel. (81-3) 3234 69 21  
Fax (81-3) 3234 69 15  
e-mail: psijapan@gol.com  
URL: www.psi-japan.com

**SOUTH AND EAST ASIA**

**Legal Library Services Limited**

Orchard  
PO Box 0523  
912318 Singapore  
Tel. (65) 243 24 98  
Fax (65) 243 24 79  
e-mail: elaine@leg-liby.demon.co.uk

**SOUTH AFRICA**

**Safto**

5th Floor Export House,  
CNR Maude & West Streets  
PO Box 782 706  
2146 Sandton  
Tel. (27-11) 883 37 37  
Fax (27-11) 883 65 69

**ANDERE LÄNDER  
OTHER COUNTRIES  
AUTRES PAYS**

Bitte wenden Sie sich an ein Büro Ihrer  
Wahl  
Please, address yourself to the sales  
office of your choice  
Veuillez vous adresser au bureau de  
vente de votre choix

Price (excl. VAT) in Luxembourg: Single copy ECU 9 • Subscription ECU 77



OFICINA DE PUBLICACIONES OFICIALES DE LAS COMUNIDADES EUROPEAS  
KONTORET FOR DE EUROPÆISKE FÆLLESSKABERS OFFICIELLE PUBLIKATIONER  
AMT FÜR AMTLICHE VERÖFFENTLICHUNGEN DER EUROPÄISCHEN GEMEINSCHAFTEN  
ΥΠΗΡΕΣΙΑ ΕΠΙΣΗΜΩΝ ΕΚΔΟΣΕΩΝ ΤΩΝ ΕΥΡΩΠΑΪΚΩΝ ΚΟΙΝΟΤΗΤΩΝ  
OFFICE FOR OFFICIAL PUBLICATIONS OF THE EUROPEAN COMMUNITIES  
OFFICE DES PUBLICATIONS OFFICIELLES DES COMMUNAUTÉS EUROPÉENNES  
UFFICIO DELLE PUBBLICAZIONI UFFICIALI DELLE COMUNITÀ EUROPEE  
BUREAU VOOR OFFICIËLE PUBLIKATIES DER EUROPESE GEMEENSCHAPPEN  
SERVIÇO DAS PUBLICAÇÕES OFICIAIS DAS COMUNIDADES EUROPEIAS

L - 2985 Luxembourg

Catalogue number: CA-CB-96-010-EN-C