

OFICINA ESTADÍSTICA DE LAS COMUNIDADES EUROPEAS
DE EUROPÆISKE FÆLLESSKABERS STATISTISKE KONTOR
STATISTISCHES AMT DER EUROPÄISCHEN GEMEINSCHAFTEN
ΣΤΑΤΙΣΤΙΚΗ ΥΠΗΡΕΣΙΑ ΤΩΝ ΕΥΡΩΠΑΪΚΩΝ ΚΟΙΝΟΤΗΤΩΝ
STATISTICAL OFFICE OF THE EUROPEAN COMMUNITIES
OFFICE STATISTIQUE DES COMMUNAUTÉS EUROPÉENNES
ISTITUTO STATISTICO DELLE COMUNITÀ EUROPEE
BUREAU VOOR DE STATISTIEK DER EUROPESE GEMEENSCHAPPEN
SERVIÇO DE ESTATÍSTICA DAS COMUNIDADES EUROPEIAS

L-2920 Luxembourg — Tél. 43 01-1 — Télex COMEUR LU 3423
B-1049 Bruxelles, rue de la Loi 200 — Tél. 299 11 11

The information included in this bulletin has been taken from the Cronos databank, which is accessible via different host companies. For all information about these host companies contact Eurostat in Luxembourg, tel. + 352 4301-34567, fax + 352 436404.

Inquiries concerning the data published in this bulletin should be addressed to:

Ms BARBIER

TEL +352 4301 32419

FAX +352 4301 33989

Inquiries concerning the methodologies of national CPIs and interim indices should be addressed to :

Ms. COSTANZI

TEL +352 4301 33552

FAX +352 4301 33989



VERBRAUCHERPREISE

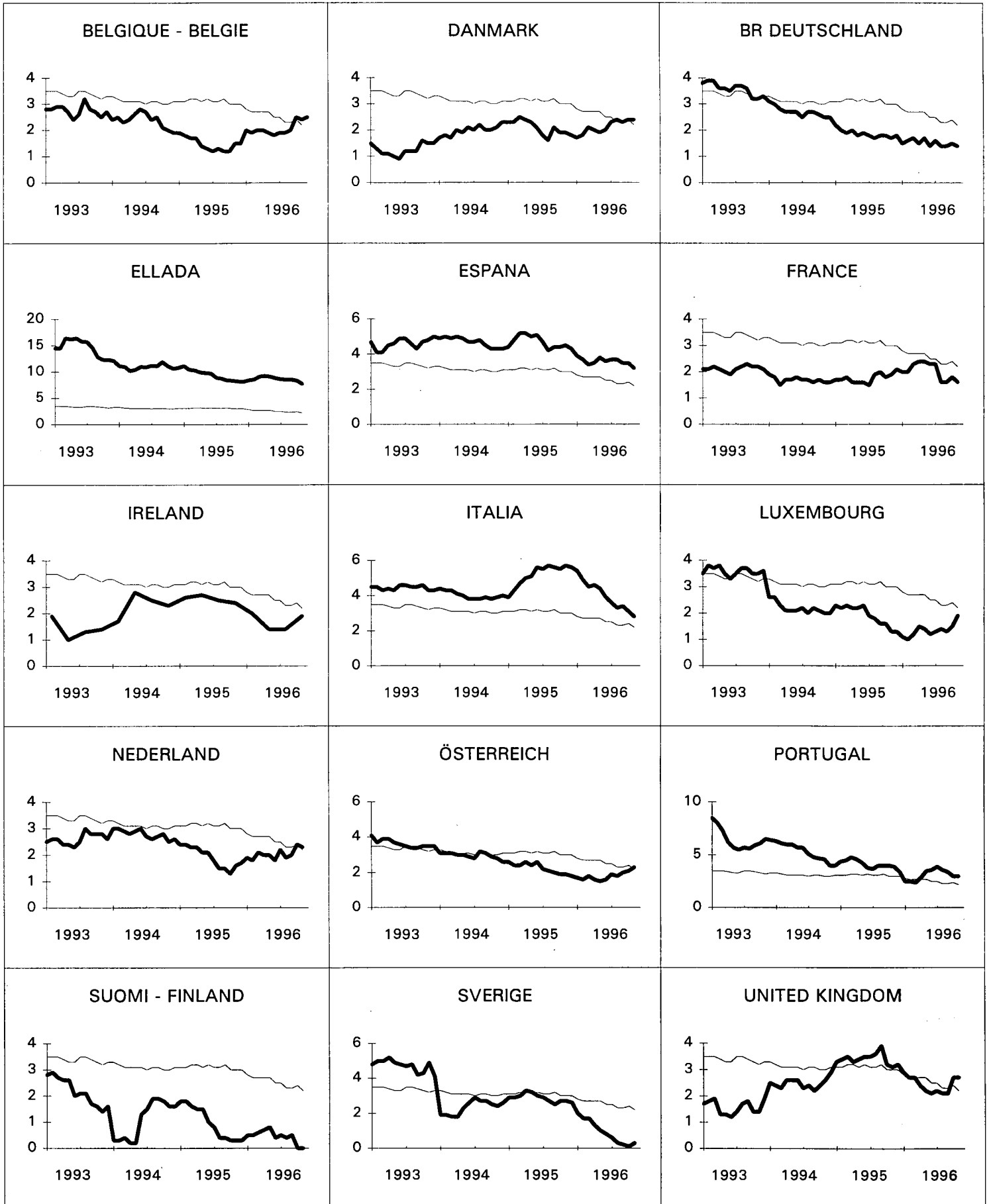
Nationaler Index
VERÄNDERUNG % T/T-12

CONSUMER PRICES

National Index
VARIATION % T/T-12

PRIX A LA CONSOMMATION

Indice National
VARIATION % T/T-12



EUR 15

TABLE I
NATIONAL CONSUMER PRICE INDICES

	EUR 15	B	DK	D	GR	E	F	IRL	I	L	NL
	Annual Average										1985 = 100
1992	135.1	117.3	126.7	115.3	308.1	153.5	123.0	125.1	147.3	115.9	111.7
1993	139.7	120.6	128.3	119.5	352.6	160.6	125.6	126.9	153.8	120.1	114.6
1994	144.0	123.4	130.8	122.7	391.1	168.1	127.8	129.8	160.0	122.7	117.8
1995	148.5	125.3	133.6	125.0	427.4	176.0	129.9	133.2	168.3	125.1	120.1
1995	Monthly Indices										
November	149.7	125.7	134.5	125.3	440.7	178.0	130.9	133.9	171.6	125.5	120.9
December	150.0	125.8	134.4	125.6	445.2	178.4	131.0	:	171.9	125.6	120.5
1996	Monthly Indices										
January	150.3p	126.9	134.3	125.7	444.7	179.6	131.2	:	172.3p	125.9	121.1
February	150.8p	127.2	135.0	126.4	443.3	180.1	131.7	134.4	172.8p	126.0	121.5
March	151.4p	127.3	135.8	126.5	458.4	180.7	132.5	:	173.3p	126.3	122.5
April	152.0p	127.5	136.1	126.6	464.2	181.8	132.8	:	174.2p	126.6	122.6
May	152.3p	127.3	136.6	126.8	467.2	182.4	133.0	135.0	174.9p	126.7	122.4
June	152.4p	127.3	136.5	126.9	469.9	182.2	132.9	:	175.3p	126.7	121.9
July	152.3p	128.1	136.3	127.4	458.2	182.4	132.6	:	175.0p	126.8	122.4
August	152.4p	128.4	136.5	127.2	458.0	183.0	132.3	135.7	175.2p	126.9	122.3
September	152.9p	128.1	137.2	127.1	471.7	183.5	132.8	:	175.7p	127.0	123.4
October	153.0p	128.5	137.4	127.1	476.1	183.6	133.1	:	175.8p	127.4	123.8
November	153.0p	128.7	137.7	127.0	474.5	183.6	133.0	136.4	176.3p	128.0	123.7p
1995	Rate of increase over one month										(T/T-1)
Nov./Oct.	0.1	0.3	0.2	0.0	0.2	0.3	0.1	0.1	0.6	0.0	0.0
Dec./Nov.	0.2	0.0	-0.1	0.3	1.0	0.3	0.1	:	0.2	0.1	-0.3
1996	Rate of increase over one month										(T/T-1)
Jan./Dec.	0.2p	0.9	-0.1	0.1	-0.1	0.7	0.2	:	0.2p	0.2	0.4
Feb./Jan.	0.4p	0.2	0.6	0.5	-0.3	0.3	0.4	0.4	0.3p	0.1	0.3
March/Feb.	0.4p	0.1	0.6	0.1	3.4	0.3	0.6	:	0.3p	0.2	0.9
April/March	0.4p	0.2	0.3	0.1	1.3	0.6	0.2	:	0.5p	0.3	0.1
May/April	0.2p	-0.2	0.4	0.2	0.6	0.3	0.2	0.4	0.4p	0.1	-0.2
June/May	0.0p	0.0	-0.1	0.1	0.6	-0.1	-0.1	:	0.2p	0.0	-0.4
July/June	0.0p	0.7	-0.2	0.3	-2.5	0.1	-0.2	:	-0.2p	0.1	0.4
August/July	0.1p	0.2	0.2	-0.1	0.0	0.3	-0.3	0.5	0.1p	0.0	-0.1
Sept./August	0.3p	-0.2	0.5	-0.1	3.0	0.3	0.4	:	0.3p	0.1	0.9
Oct./Sept.	0.1p	0.3	0.1	0.0	0.9	0.1	0.3	:	0.1p	0.3	0.3
Nov./Oct.	0.0p	0.2	0.2	-0.1	-0.3	0.0	-0.1	0.5	0.3p	0.5	-0.1p
1995	Rate of increase over 12 months										(T/T-12)
November	3.0	1.5	1.9	1.7	8.2	4.5	1.9	2.4	5.7	1.3	1.6
December	3.0	1.5	1.8	1.8	8.1	4.3	2.1	:	5.6	1.3	1.7
1996	Rate of increase over 12 months										(T/T-12)
January	2.8p	2.0	1.7	1.5	8.4	3.9	2.0	:	5.4p	1.1	1.9
February	2.7p	1.9	1.8	1.6	8.5	3.7	2.0	2.0	4.9p	1.0	1.8
March	2.7p	2.0	2.1	1.7	9.1	3.4	2.3	:	4.5p	1.2	2.1
April	2.7p	2.0	2.0	1.5	9.2	3.5	2.4	:	4.6p	1.5	2.0
May	2.7p	1.9	1.9	1.7	9.1	3.8	2.4	1.4	4.4p	1.4	2.0
June	2.5p	1.8	2.0	1.4	8.8	3.6	2.3	:	3.9p	1.2	1.8
July	2.5p	1.9	2.3	1.6	8.6	3.7	2.3	:	3.6p	1.3	2.2
August	2.3p	1.9	2.4	1.4	8.5	3.7	1.6	1.4	3.3p	1.4	1.9
September	2.3p	2.0	2.3	1.4	8.5	3.5	1.6	:	3.4p	1.3	2.0
October	2.4p	2.5	2.4	1.5	8.3	3.5	1.8	:	3.1p	1.5	2.4
November	2.2p	2.4	2.4	1.4	7.7	3.2	1.6	1.9	2.8p	1.9	2.3p

TABLE II
NATIONAL CONSUMER PRICE INDICES



A	P	FIN	S	UK	IS	N	CH	USA	JAP	CAN	
					Annual Average 1985 = 100						
119.7	206.7	136.7	151.1	146.4	278.1	143.3	124.6	130.5	112.3	133.4	1992
124.0	220.0	139.7	158.2	148.7	289.5	146.5	128.7	134.3	113.8	135.8	1993
127.7	231.5	141.2	161.6	152.4	294.0	148.6	129.8	137.8	114.6	136.1	1994
130.5	241.1	142.6	165.7	157.6	298.8	152.2	132.2	141.7	114.4	139.0	1995
					Monthly Indices						1995
130.6	243.2	142.5	167.0	158.3	301.0	152.9	132.4	142.8	114.2	139.6	November
130.5	242.7	142.4	166.5	159.3	300.8	152.9	132.4	142.7	114.3	139.4	December
											1996
131.2	243.4	142.6	166.2	158.8	302.1	152.2	132.8	143.6	114.2	139.7	January
131.8	245.1	143.1	166.4	159.5	302.6	152.3	133.1	144.0	114.0	140.0	February
132.4	246.1	143.3	167.2	160.1	303.1	153.0	133.3	144.8	114.2	140.5	March
132.3	248.3	143.5	167.5	161.3	303.6	153.5	133.4	145.3	115.0	140.9	April
132.1	249.5	143.8	167.3	161.6	305.5	153.7	132.9	145.6	115.2	141.3	May
132.8	249.2	143.8	166.7	161.7	305.2	153.9	133.2	145.7	114.8	141.2	June
134.0	249.7	143.7	166.3	161.1	305.5	154.5	133.0	146.0	114.7	141.2	July
134.8	250.4	143.4	165.5	161.8	307.4	154.4	133.3	146.3	114.4	141.3	August
133.7	250.4	143.7	166.5	162.6	308.1	155.1	133.4	146.7	114.9	141.5	September
133.4	250.2	143.9	166.4	162.6	308.3	155.7	133.6	147.2	115.1r	141.8	October
133.5p	250.6	143.5	166.0	162.7	308.4	155.7	133.3	147.5	114.3p	142.5	November
					Rate of increase over one month (T/T-1)						1995
-0.1	0.1	-0.3	0.0	0.0	-0.3	-0.1	-0.1	-0.1	-0.2	0.2	Nov./Oct.
-0.1	-0.2	-0.1	-0.3	0.6	-0.1	0.0	0.0	-0.1	0.1	-0.1	Dec./Nov.
											1996
0.5	0.3	0.2	0.1	-0.3	0.4	-0.5	0.3	0.6	-0.1	0.2	Jan./Dec.
0.5	0.7	0.4	0.1	0.5	0.2	0.0	0.2	0.3	-0.2	0.1	Feb./Jan.
0.5	0.4	0.1	0.5	0.4	0.2	0.5	0.1	0.5	0.2	0.4	March/Feb.
-0.1	0.9	0.2	0.2	0.7	0.2	0.3	0.1	0.4	0.7	0.3	April/March
-0.2	0.5	0.2	-0.1	0.2	0.6	0.2	-0.4	0.2	0.2	0.3	May/April
0.5	-0.1	0.0	-0.4	0.1	-0.1	0.1	0.2	0.1	-0.4	-0.1	June/May
0.9	0.2	-0.1	-0.2	-0.4	0.1	0.4	-0.1	0.2	-0.1	0.0	July/June
0.5	0.3	-0.2	-0.5	0.5	0.6	-0.1	0.3	0.2	-0.2	0.1	August/July
-0.8	0.0	0.2	0.6	0.5	0.2	0.5	0.1	0.3	0.4	0.1	Sept./August
-0.2	-0.1	0.2	0.0	0.0	0.1	0.4	0.1	0.3	0.2r	0.2	Oct./Sept.
0.1p	0.2	-0.3	-0.2	0.1	0.1	0.0	-0.2	0.2	-0.7p	0.4	Nov./Oct.
					Rate of increase over 12 months (T/T-12)						1995
1.9	3.9	0.3	2.7	3.1	2.1	2.1	1.9	2.6	-0.7	2.1	November
1.8	3.4	0.3	2.6	3.2	2.0	2.2	1.9	2.5	-0.3	1.7	December
											1996
1.7	2.5	0.5	2.0	2.9	1.6	1.2	1.5	2.7	-0.4	1.6	January
1.6	2.5	0.5	1.7	2.7	1.7	0.9	0.8	2.7	-0.2	1.3	February
1.8	2.4	0.6	1.7	2.7	2.0	0.7	0.9	2.8	0.1	1.4	March
1.6	2.9	0.7	1.3	2.4	2.3	1.0	0.9	2.9	0.4	1.4	April
1.5	3.5	0.8	1.0	2.2	2.8	1.0	0.7	2.9	0.3	1.5	May
1.6	3.6	0.4	0.8	2.1	2.6	0.9	0.7	2.8	0.0	1.4	June
1.9	3.9	0.5	0.6	2.2	2.4	1.3	0.7	3.0	0.6	1.2	July
1.8	3.6	0.4	0.3	2.1	2.6	1.5	0.6	2.9	0.2	1.4	August
2.0	3.4	0.5	0.2	2.1	2.5	1.3	0.6	3.0	-0.1	1.5	September
2.1	3.0	0.7	-0.1	2.7	2.1	1.7	0.8	3.0	0.6r	1.8	October
2.3p	3.0	0.7	-0.3	2.7	2.5	1.8	0.7	3.3	0.1p	2.0	November

NATIONAL CONSUMER PRICE INDICES

EXPLANATORY NOTES

METHODOLOGY

The consumer price indices (CPIs) given here are the national general indices which have different names in each country; they are not harmonised*. The coverage of these general indices varies between countries as regards the proportion of the population covered (e.g. specific income groups or other categories may be excluded), the goods and services covered (e.g. owner occupiers' housing costs may be excluded) and the geographical areas covered (e.g. rural areas may be excluded). A system of fixed weighting is used in some countries, whereas others use a chain system updating weights each year. Starting with the index for January 1993 the indices for Germany and for the EUR 15 average reflect the territory after the German reunification on 3rd October 1990. The general index published by Eurostat corresponds to the general index published by the country, but it may be on a different index reference period. 1985 is the index reference period used by Eurostat for ease of comparison.

* **NB** : It should be noted that the figures in the first part of this publication (pp. 1-5) are based on national methodologies. Therefore they are not fully comparable one with another. The Member States of the European Union are currently working on a harmonisation project. As a first step in harmonisation, interim indices based largely on existing national CPIs have been compiled. They are published on pages 8-11 of this bulletin.

CALCULATION OF THE EUR 15 AVERAGE INDEX FROM NATIONAL CONSUMER PRICE INDICES

The EUR 15 average index is calculated by Eurostat as a weighted average of the national price indices of the 15 Member States of the European Union. The index is calculated as a chain index of the "Laspeyres" type with country weights changing each year. The weight of a Member State is its proportion of final consumption of households in the total for EUR 15. The values of final consumption in national currencies are converted into purchasing power standards (PPS) using the purchasing power parities of GDP. Since the necessary national accounts data become available only after two years, the weights are lagged by two years, e.g. the weights used for 1996 are those of 1994. Moreover, national accounts data are often revised. To avoid continuous modifications in the EUR 15 average index for previous periods, Eurostat has "frozen" the weights which are used. Thus, the EUR 15 average index will not be affected by the revisions of the national accounts.

INTERIM INDICES OF CONSUMER PRICES FOR INTERNATIONAL PRICE COMPARISONS

EXPLANATORY NOTES

METHODOLOGY

These interim indices are designed to facilitate comparison of rates of consumer price inflation across the European Union before fully harmonised indices can be produced. National Consumer Price Indices (CPIs) are not directly comparable because they are based on differences in concepts, methods and practices. A programme of work has, therefore, been instituted so that Member States will produce indices which can be directly compared with a fair degree of confidence. These indices will be called Harmonised Indices of Consumer Prices (HICPs); they will be distinct from national CPIs and will be published from February 1997. Meanwhile, it is necessary to produce a set of indices which are sufficiently comparable to permit the assessment of the Economic and Monetary Union criterion on price stability: the first convergence reports are due in 1996. For the interim indices national CPIs have been adjusted to provide measures of inflation as comparable as possible, mainly by excluding items for which major differences exist and for which comparable measures must be developed, but also by including items such as alcoholic drink and tobacco in those indices where these are not currently covered. The purposes of national CPIs and the interim indices differ and comparisons between them are not generally appropriate.

CALCULATION OF THE EUROPEAN AVERAGE OF THE INTERIM INDICES

The European average of the interim indices is calculated by Eurostat as a weighted average of the interim indices of the 15 Member States of the European Union. The method corresponds to the calculation of the EUR 15 average index from national CPIs explained on page 6. Hence, the weights used for the Member States in the calculation of the European average from the interim indices are identical to the weights used in the EUR 15 average index of national CPIs.

After the launch of the HICPs in February 1997, the European average of the interim indices will be replaced by the European Index of Consumer Prices (EICP), an average of the 15 HICPs of Member States.

INTERIM INDICES OF CONSUMER PRICES FOR INTERNATIONAL PRICE COMPARISONS

Given below are annual rates of inflation based on interim indices of consumer prices which have been constructed primarily for the European Commission and the European Monetary Institute in order that they may assess the convergence of economies preparatory to Economic and Monetary Union. The figures do not compare directly with the national CPIs given at the beginning of this bulletin which were designed for domestic purposes and will be continued to be used for such purposes. These interim indices represent the first stage in a programme of work to produce consumer price indices which are internationally comparable. Such Harmonised Indices of Consumer Prices (HICPs) will be available for international comparisons in 1997.

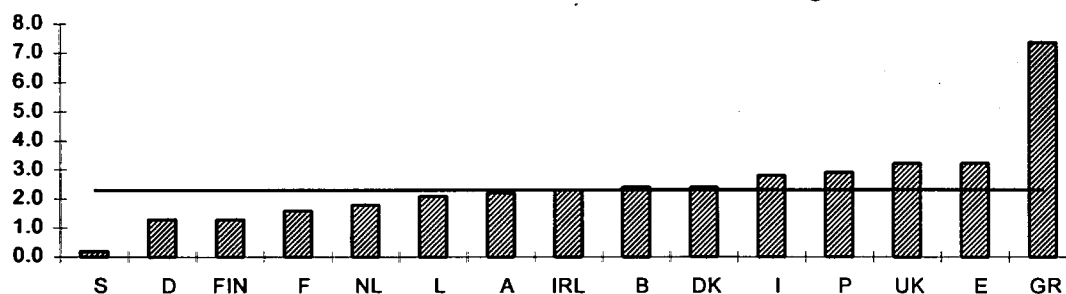
The criterion on price stability referred to in Article 109j of the Treaty on European Union requires that "a Member State has a price performance that is sustainable and an average rate of inflation, observed over a period of one year before the examination, that does not exceed by more than 1½ percentage points that of, at most, the three best performing Member States in terms of price stability. Inflation shall be measured by means of the consumer price index on a comparable basis, taking into account differences in national definitions". The interim indices presented here are not on a strictly comparable basis and should be used with caution. However, taken together with other information they provide a better basis for assessing convergence than the national indices. Further methodological notes are given on page 7 of this bulletin.

In ascending order of current inflation, the annual inflation rates as measured by the interim indices for the individual Member States for November to August are:

eurostat	November 1996	October 1996	September 1996	August 1996
	November 1995	October 1995	September 1995	August 1995
S	0.2 %	0.3 %	0.6 %	0.8 %
D	1.3 %	1.4 %	1.3 %	1.2 %
FIN	1.3 %	1.3 %	1.2 %	1.1 %
F	1.6 %	1.8 %	1.6 %	1.7 %
NL	1.8 %p	1.9 %	1.4 %	1.3 %
L	2.1 %	1.7 %	1.5 %	1.5 %
A	2.2 %p	2.2 %	2.2 %	2.2 %
IRL	2.3 %*	2.3 %*	2.2 %*	2.2 %*
B	2.4 %	2.6 %	2.1 %	2.0 %
DK	2.4 %	2.6 %	2.5 %	2.5 %
I	2.8 %p	3.2 %p	3.5 %p	3.5 %p
P	2.9 %	2.8 %	3.2 %	3.5 %
UK	3.2 %	3.1 %	2.9 %	2.8 %
E	3.2 %	3.4 %	3.6 %	3.7 %
GR	7.3 %	7.9 %	8.1 %	8.3 %
EU	2.3 %p	2.4 %p	2.4 %p	2.4 %p



Interim indices annual % rates
Horizontal line indicates EU average



* The index for Ireland is quarterly
p = provisional



VERBRAUCHERPREISE

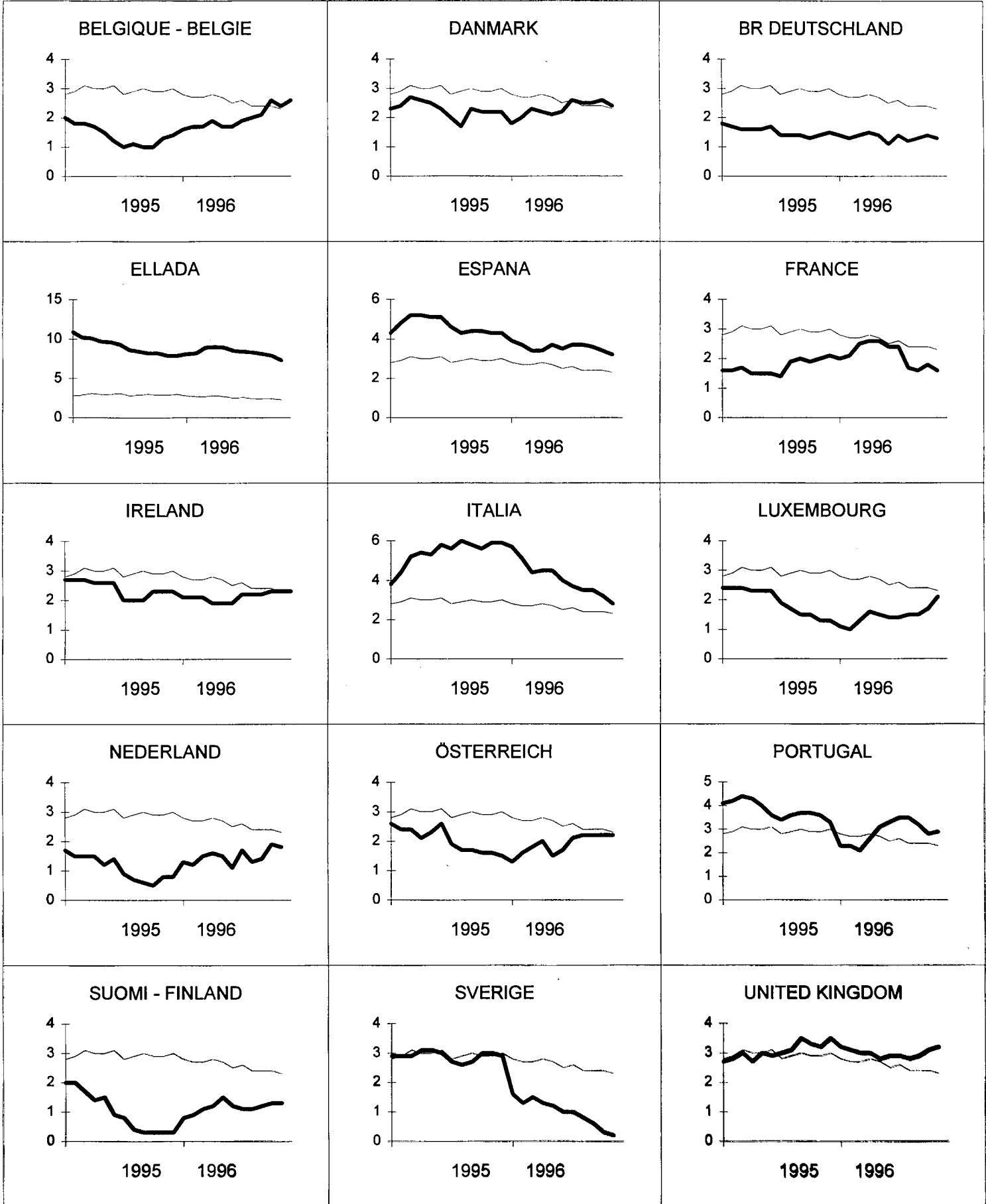
Interimsindex
VERÄNDERUNG % T/T-12

CONSUMER PRICES

Interim Index
VARIATION % T/T-12

PRIX A LA CONSOMMATION

Indice Intérimaire
VARIATION % T/T-12



EU

INTERIM INDICES OF CONSUMER PRICES FOR INTERNATIONAL PRICE COMPARISONS

	EU	B	DK	D	GR	E	F	IRL	I	L	NL
	Annual Average										1994 = 100
1994	100.0	100.0	100.0	100.0	100.0	100.0	100.0	100.0	100.0	100.0	100.0
1995	103.0	101.4	102.3	101.6	109.0	104.7	101.7	102.4	105.4	101.9	101.1
1994	Monthly Indices (NB: The index for Ireland is quarterly)										
November	100.9	100.4	100.9	100.3	104.1	101.4	100.5	100.7	101.5	101.0	100.7
December	101.1	100.5	100.8	100.4	105.3	101.8	100.5	100.7	101.7	101.1	100.2
1995											
January	101.4	100.9	101.1	100.8	104.6	102.9	100.7	101.5	102.1	101.5	100.1
February	101.9	101.0	101.6	101.2	104.1	103.4	101.0	101.5	103.0	101.7	100.7
March	102.4	101.0	101.9	101.2	107.3	104.0	101.3	101.5	104.0	101.7	101.5
April	102.8	101.1	102.3	101.4	108.7	104.5	101.4	102.6	104.5	101.7	101.6
May	103.1	101.3	102.6	101.6	109.5	104.5	101.6	102.6	105.1	101.9	101.4
June	103.2	101.3	102.4	101.9	110.4	104.6	101.6	102.6	105.7	101.9	101.2
July	103.0	101.5	101.9	101.8	107.5	104.5	101.4	102.5	105.8	102.0	100.3
August	103.3	101.8	102.1	101.8	107.6	104.9	101.9	102.5	106.2	101.9	100.6
September	103.6	101.7	102.8	101.7	110.8	105.3	102.3	102.5	106.4	102.0	101.6
October	103.7	101.6	102.9	101.7	112.1	105.5	102.4	103.0	106.8	102.2	101.6
November	103.9	101.7	103.1	101.7	112.3	105.8	102.5	103.0	107.5	102.3	101.5
December	104.1	101.9	103.0	101.9	113.6	106.2	102.6	103.0	107.7	102.4	101.0
1996											
January	104.3p	102.5	102.9	102.2	113.1	106.9	102.7	103.6	107.9p	102.6	101.4
February	104.7p	102.7	103.6	102.5	112.6	107.2	103.1	103.6	108.3p	102.7	101.9
March	105.1p	102.7	104.2	102.6	116.9	107.5	103.8	103.6	108.6p	103.0	103.0
April	105.6p	103.0	104.5	102.9	118.5	108.1	104.0	104.6	109.2p	103.3	103.2
May	105.8p	103.0	104.8	103.0	119.2	108.4	104.2	104.6	109.8p	103.4	102.9
June	105.8p	103.0	104.7	103.0	119.8	108.3	104.0	104.6	109.9p	103.3	102.3
July	105.6p	103.4	104.5	103.2	116.5	108.4	103.8	104.8	109.7p	103.4	102.0
August	105.7p	103.8	104.7	103.0	116.5	108.8	103.6	104.8	109.9p	103.4	101.9
September	106.1p	103.8	105.4	103.0	119.8	109.1	103.9	104.8	110.1p	103.5	103.0
October	106.2p	104.2	105.6	103.1	121.0	109.1	104.2	105.3	110.2p	103.9	103.5
November	106.2p	104.1	105.6	103.0	120.5	109.2	104.1	105.3	110.5p	104.4	103.3p
1995	Rate of increase over 12 months										(T/T-12)
November	2.9	1.3	2.2	1.4	7.9	4.3	2.0	2.3	5.9	1.3	0.8
December	3.0	1.4	2.2	1.5	7.9	4.3	2.1	2.3	5.9	1.3	0.8
1996											
January	2.8p	1.6	1.8	1.4	8.1	3.9	2.0	2.1	5.7p	1.1	1.3
February	2.7p	1.7	2.0	1.3	8.2	3.7	2.1	2.1	5.1p	1.0	1.2
March	2.7p	1.7	2.3	1.4	8.9	3.4	2.5	2.1	4.4p	1.3	1.5
April	2.8p	1.9	2.2	1.5	9.0	3.4	2.6	1.9	4.5p	1.6	1.6
May	2.7p	1.7	2.1	1.4	8.9	3.7	2.6	1.9	4.5p	1.5	1.5
June	2.5p	1.7	2.2	1.1	8.5	3.5	2.4	1.9	4.0p	1.4	1.1
July	2.6p	1.9	2.6	1.4	8.4	3.7	2.4	2.2	3.7p	1.4	1.7
August	2.4p	2.0	2.5	1.2	8.3	3.7	1.7	2.2	3.5p	1.5	1.3
September	2.4p	2.1	2.5	1.3	8.1	3.6	1.6	2.2	3.5p	1.5	1.4
October	2.4p	2.6	2.6	1.4	7.9	3.4	1.8	2.3	3.2p	1.7	1.9
November	2.3p	2.4	2.4	1.3	7.3	3.2	1.6	2.3	2.8p	2.1	1.8p

TABLE IV
INTERIM INDICES OF CONSUMER PRICES



A	P	FIN	S	UK	IS	N	CH		
					Annual Average			1994 = 100	
100.0	100.0	100.0	100.0	100.0	100.0	100.0	100.0	1994	
102.0	103.8	101.0	102.9	103.0	101.6	102.5	102.0	1995	
					Monthly Indices				
100.8	100.9	100.7	100.9	100.5	100.1	100.8	100.1	November	
100.9	101.2	100.5	100.7	100.9	100.2	100.8	100.0	December	
								1995	
101.5	102.5	100.5	101.4	101.0	100.8	101.4	100.8	January	
101.6	103.1	100.9	101.8	101.6	100.9	101.8	101.9	February	
101.8	103.5	100.9	102.3	102.2	100.7	102.4	101.9	March	
101.7	104.0	101.0	103.0	102.8	100.9	102.4	102.0	April	
102.1	103.9	101.1	103.1	103.4	101.2	102.6	102.2	May	
102.3	103.6	101.3	103.0	103.4	101.2	102.8	102.4	June	
101.9	103.6	101.2	102.7	102.8	101.5	102.7	102.3	July	
101.9	104.0	101.0	102.6	103.5	101.9	102.5	102.2	August	
102.3	104.2	101.1	103.6	104.0	102.3	103.0	102.3	September	
102.4	104.4	101.2	103.9	103.7	102.9	102.9	102.1	October	
102.4	104.5	101.0	103.9	103.7	102.4	102.8	102.1	November	
102.4	104.5	100.8	103.6	104.4	102.3	102.8	102.1	December	
								1996	
102.8	104.9	101.3	103.0	104.2	102.9	102.2	102.4	January	
103.2	105.5	101.8	103.1	104.8	103.2	102.2	102.4	February	
103.6	105.7	102.0	103.8	105.3	103.4	102.6	102.7	March	
103.7	106.7	102.2	104.3	105.9	103.6	103.1	102.8	April	
103.6	107.1	102.6	104.3	106.3	104.3	103.3	102.7	May	
104.0	107.0	102.5	104.0	106.4	104.3	103.4	102.9	June	
104.0	107.2	102.3	103.7	105.8	104.3	103.9	102.7	July	
104.1	107.6	102.1	103.4	106.4	104.9	103.7	102.6	August	
104.5	107.5	102.3	104.2	107.0	104.9	104.1	102.6	September	
104.7	107.3	102.5	104.2	106.9	105.3	104.6	102.8	October	
104.7p	107.5	102.3	104.1	107.0	105.3	104.6	102.7	November	
					Rate of increase over 12 months			1995	
					2.3	2.0	2.0	November	
					2.1	2.0	2.1	December	
								1996	
					2.1	0.8	1.6	January	
					2.3	0.4	0.5	February	
					2.7	0.2	0.8	March	
					2.7	0.7	0.8	April	
					3.1	0.7	0.5	May	
					3.1	0.6	0.5	June	
					2.8	1.2	0.4	July	
					2.9	1.2	0.4	August	
					2.5	1.1	0.3	September	
					2.3	1.7	0.7	October	
					2.8	1.8	0.6	November	
					(T/T-12)				
					1.6	3.6	0.3	3.0	3.2
					1.5	3.3	0.3	2.9	3.5
					1.3	2.3	0.8	1.6	3.2
					1.6	2.3	0.9	1.3	3.1
					1.8	2.1	1.1	1.5	3.0
					2.0	2.6	1.2	1.3	3.0
					1.5	3.1	1.5	1.2	2.8
					1.7	3.3	1.2	1.0	2.9
					2.1	3.5	1.1	1.0	2.9
					2.2	3.5	1.1	0.8	2.8
					2.2	3.2	1.2	0.6	2.9
					2.2	2.8	1.3	0.3	3.1
					2.2p	2.9	1.3	0.2	3.2

BELGIQUE BELGIË

Moniteur belge/Belgisch Staatsblad

Rue de Louvain 40-42/
Leuvenseweg 40-42
B-1030 Bruxelles/Brussel
Tél. (32-2) 552 22 11
Fax (32-2) 511 01 84

Jean De Lannoy

Avenue du Roi 202/
Koningslaan 202
B-1050 Bruxelles/Brussel
Tél. (32-2) 538 51 69
Fax (32-2) 538 08 41
E-mail: jean.de.lannoy@infoboard.be

Librairie européenne/Europese Boekhandel

Rue de la Loi 244/
Wetstraat 244
B-1040 Bruxelles/Brussel
Tél. (32-2) 295 26 39
Fax (32-2) 735 08 60

DANMARK

J. H. Schultz Information A/S

Herstedvang 10-12
DK-2620 Albertslund
Tlf. (45) 43 63 23 00
Fax (45) 43 63 19 69
E-mail: schultz@schultz.dk
URL: www.schultz.dk

DEUTSCHLAND

Bundesanzeiger Verlag

Brene Straße 78-80
Postfach 10 05 34
D-50667 Köln
Tél. (49-221) 20 29-0
Fax (49-221) 20 29 278

GREECE/ΕΛΛΑΔΑ

G.C. Eleftheroudakis SA

International Bookstore
Panepistimiou 17
GR-105 64 Athens
Tél. (30-1) 331 41 80/1/2/3
Fax (30-1) 323 98 21
E-mail: elebooks@netor.gr

ESPAÑA

Mundi Prensa Libros, SA

Castelló, 37
E-28001 Madrid
Tél. (34-1) 431 33 99/431 32 22
Fax (34-1) 575 39 98
E-mail: mundiprensa@tsai.es
URL: www.tsai.es/mprensa

Boletín Oficial del Estado

Trafalgar, 27-29
E-28071 Madrid
Tél. (34-1) 538 22 95 (Libros/
384 17 15 (Suscripciones)
Fax (34-1) 538 23 49 (Libros/
384 17 14 (Suscripciones)
URL: www.boe.es

Mundi Prensa Barcelona

Consell de Cent, 391
E-08009 Barcelona
Tél. (34-3) 488 34 92
Fax (34-3) 487 76 59

FRANCE

Journal officiel

Service des publications des CE
26, rue Desaix
F-75727 Paris Cedex 15
Tél. (33-1) 40 58 77 01/31
Fax (33-1) 40 58 77 00

IRELAND

Government Supplies Agency

Publications Section
4-5 Harcourt Road
Dublin 2
Tél. (353-1) 661 31 11
Fax (353-1) 475 27 60

ITALIA

Licosa SpA

Via Duca di Calabria, 1/1
Casella postale 552
I-50125 Firenze
Tél. (39-55) 64 54 15
Fax (39-55) 64 12 57
E-mail: licosa@ftbce.it
URL: ic382.cilea.it/Virtual_Library/bibliot/vetrina/
licosa/tt1.htm

GRAND-DUCHÉ DE LUXEMBOURG

Messageries du livre Sarl

5, rue Raiffeisen
L-2411 Luxembourg
Tél. (352) 40 10 20
Fax (352) 490 661
E-mail: mdl@pt.lu

Abonnements:

Messageries Paul Kraus

11, rue Christophe Plantin
L-2339 Luxembourg
Tél. (352) 499 88 88
Fax (352) 499 888 444
E-mail: mpk@pt.lu
URL: www.mpk.lu

NEDERLAND

SDU Servicecentrum Uitgevers

Christoffel Plantijnstraat 2
Postbus 20014
2500 EA 's-Gravenhage
Tél. (31-70) 378 98 80
Fax (31-70) 378 97 83
E-mail: sdu@sdu.nl
URL: www.sdu.nl

ÖSTERREICH

**Manz'sche Verlags- und Universitäts-
buchhandlung GmbH**

Siebenbrunnengasse 21
Postfach 1
A-1050 Wien
Tél. (43-1) 53 161 334 / 340
Fax (43-1) 53 161 339
E-mail: auslieferung@manz.co.at
URL: www.austria.EU.net:81/manz

PORTUGAL

Imprensa Nacional-Casa da Moeda, EP

Rua Marquês de Sá da Bandeira, 16 A
P-1050 Lisboa Codex
Tél. (351-1) 353 03 99
Fax (351-1) 353 02 94/384 01 32

Distribuidora de Livros Bertrand Ld.ª

Rua das Terras dos Vales, 4 A
Apartado 60037
P-2701 Amadora Codex
Tél. (351-1) 495 90 50/495 87 87
Fax (351-1) 496 02 55

SUOMI/FINLAND

Akateeminen Kirjakauppa /

Akademiska Bokhandeln
Pohjoisesplanadi 39/
Norra esplanaden 39
PL/PB 128
FIN-00101 Helsinki/Helsingfors
Tél. (358-9) 121 41
Fax (358-9) 121 44 35
E-mail: akatiliaus@stockmann.mailnet.fi
URL: booknet.cultnet.fi/aka/index.htm

SVERIGE

BTJ AB

Traktorvägen 11
PO Box 200
S-22100 Lund
Tél. (46-46) 18 00 00
Fax (46-46) 18 01 25
E-mail: btj_tc@mail.btj.se
URL: www.btj.se/media/eu

UNITED KINGDOM

The Stationery Office Ltd

(Agency Section)
51, Nine Elms Lane
London SW8 5DR
Tél. (44-171) 873 9090
Fax (44-171) 873 8463
URL: www.the-stationery-office.co.uk

ICELAND

Bokabud Larusar Blöndal

Skölavörðustíg, 2
IS-101 Reykjavík
Tél. (354) 55 15 650
Fax (354) 55 25 560

NORGE

NIC Info A/S

Ostenjoveien 18
Boks 6512 Etterstad
N-0606 Oslo
Tél. (47-22) 97 45 00
Fax (47-22) 97 45 45

SCHWEIZ/SUISSE/SVIZZERA

OSEC

Stampfenbachstraße 85
CH-8035 Zürich
Tél. (41-1) 365 53 15
Fax (41-1) 365 54 11
E-mail: urs.leimbacher@ecs.osec.inet.ch
URL: www.osec.ch

ČESKÁ REPUBLIKA

NIS CR - prodejná

Konviktská 5
CZ-113 57 Praha 1
Tél. (42-2) 24 22 94 33
Fax (42-2) 24 22 94 33
E-mail: nkposp@dec.nis.cz
URL: www.nis.cz

CYPRUS

Cyprus Chamber Of Commerce & Industry

38, Grivas Digenis Ave
Mail orders:
PO Box 1455
CY-1509 Nicosia
Tél. (357-2) 44 95 00/46 23 12
Fax (357-2) 361 044
E-mail: cy1691_eic_cyprus@vans.infonet.com

MAGYARORSZÁG

Euro Info Service

Európa Ház
Margitsziget
PO Box 475
H-1396 Budapest 62
Tél. (36-1) 11 16 061/11 16 216
Fax (36-1) 302 50 35
E-mail: euroinfo@mail.matav.hu
URL: www.euroinfo.hu/index.htm

MALTA

Miller Distributors Ltd

Malta International Airport
PO Box 25
LOA 05 Malta
Tél. (356) 66 44 88
Fax (356) 67 67 99

POLSKA

Ars Polona

Krakowskie Przedmiescie 7
Skr. pocztowa 1001
PL-00-950 Warszawa
Tél. (48-2) 26 12 01
Fax (48-2) 26 62 40

TÜRKIYE

Dünya Infotel A.S.

Istiklal Cad. No: 469
TR-80050 Tünel-Istanbul
Tél. (90-212) 251 91 96
(90-312) 427 02 10
Fax (90-212) 251 91 97

BÄLGARIA

Europress-Euromedia Ltd

59, Blvd Vitosha
BG-1000 Sofia
Tél. (359-2) 80 46 41
Fax (359-2) 80 45 41

HRVATSKA

Mediatrade Ltd

Pavla Hatza 1
HR-10000 Zagreb
Tél. (385-1) 43 03 92
Fax (385-1) 44 40 59

ROMÂNIA

Euromedia

Str. G-ral Berhelot Nr 41
RO-70749 Bucuresti
Tél. (40-1) 210 44 01/614 06 64
Fax (40-1) 210 44 01/312 96 46

SLOVAKIA

Slovenska Technicka Kniznica

Námestie slobody 19
SLO-81223 Bratislava 1
Tél. (42-7) 53 18 364
Fax (42-7) 53 18 364
E-mail: europ@tbb1.sitk.stuba.sk

SLOVENIA

Gospodarski Vestnik

Zalozniska skupina d.d.
Dunajska cesta 5
SI-1000 Ljubljana
Tél. (386) 61 133 03 54
Fax (386) 61 133 91 28
E-mail: belica@gvestnik.si
URL: www.gvestnik.si

ISRAEL

R.O.Y. International

17, Shimon Hatarssi Street
PO Box 13056
61130 Tel Aviv
Tél. (972-3) 546 14 23
Fax (972-3) 546 14 42
E-mail: royil@netvision.net.il

Sub-agent for the Palestinian Authority:

Index Information Services

PO Box 19502
Jerusalem
Tél. (972-2) 27 16 34
Fax (972-2) 27 12 19

RUSSIA

CCEC

60-letiya Oktyabrya Av. 9
117312 Moscow
Tél. (095) 135 52 27
Fax (095) 135 52 27

AUSTRALIA

Hunter Publications

PO Box 404
3167 Abbotsford, Victoria
Tél. (61-3) 9417 53 61
Fax (61-3) 9419 71 54

CANADA

**Uniquement abonnements/
Subscriptions only:**

Renouf Publishing Co. Ltd

1294 Algoma Road
K1B 3W8 Ottawa, Ontario
Tél. (1-613) 741 73 33
Fax (1-613) 741 54 39
E-mail: renouf@fox.nstn.ca
URL: fox.NSTN.Ca/~renouf

EGYPT

The Middle East Observer

41, Sherif Street
Cairo
Tél. (20-2) 39 39 732
Fax (20-2) 39 39 732

JAPAN

PSI-Japan

Asahi Sanbancho Plaza #206
7-1 Sanbancho, Chiyoda-ku
Tokyo 102
Tél. (81-3) 3234 69 21
Fax (81-3) 3234 69 15
E-mail: psijapan@gol.com
URL: www.psi-japan.com

SOUTH AFRICA

Safto

5th Floor Export House,
CNR Maude & West Streets
PO Box 782 706
2146 Sandton
Tél. (27-11) 883 37 37
Fax (27-11) 883 65 69

UNITED STATES OF AMERICA

Bernan Associates

4611-F Assembly Drive
MD20706 Lanham
Tél. (301) 459 2255 (toll free telephone)
Fax (800) 865 3450 (toll free fax)
E-mail: query@bernan.com
URL: www.bernan.com

MÉXICO

Mundi-Prensa Mexico, SA de CV

Rio Pánuco, 141
Delegación Cuauhtémoc
ME-06500 México DF
Tél. (52-5) 553 56 58/60
Fax (52-5) 514 67 99
E-mail: 104164.23compuserve.com

RÉPUBLIQUE DE CORÉE

Kyowa Book Company

1 F1, Phung Hwa Bldg
411-2 Hap Jeong Dong, Mapo Ku
121-220 Seoul
Tél. (82-2) 322 6780/1
Fax (82-2) 322 6782
E-mail: kyowa2@ktnet.co.kr.

**ANDERE LÄNDER/OTHER COUNTRIES/
AUTRES PAYS**

Bitte wenden Sie sich an ein Büro Ihrer
Wahl / Please contact the sales office of
your choice / Veuillez vous adresser au
bureau de vente de votre choix

Price (excl. VAT) in Luxembourg: Single copy ECU 9 • Subscription ECU 77



OFICINA DE PUBLICACIONES OFICIALES DE LAS COMUNIDADES EUROPEAS
KONTORET FOR DE EUROPÆISKE FÆLLESSKABERS OFFICIELLE PUBLIKATIONER
AMT FÜR AMTLICHE VERÖFFENTLICHUNGEN DER EUROPÄISCHEN GEMEINSCHAFTEN
ΥΠΗΡΕΣΙΑ ΕΠΙΣΗΜΩΝ ΕΚΔΟΣΕΩΝ ΤΩΝ ΕΥΡΩΠΑΪΚΩΝ ΚΟΙΝΟΤΗΤΩΝ
OFFICE FOR OFFICIAL PUBLICATIONS OF THE EUROPEAN COMMUNITIES
OFFICE DES PUBLICATIONS OFFICIELLES DES COMMUNAUTÉS EUROPÉENNES
UFFICIO DELLE PUBBLICAZIONI UFFICIALI DELLE COMUNITÀ EUROPEE
BUREAU VOOR OFFICIËLE PUBLIKATIES DER EUROPESE GEMEENSCHAPPEN
SERVIÇO DAS PUBLICAÇÕES OFICIAIS DAS COMUNIDADES EUROPEIAS

L - 2985 Luxembourg

Catalogue number: CA-CB-96-012-EN-C