



INDUSTRIAL SHORT-TERM TRENDS

Monthly

INDEX OF INDUSTRIAL PRODUCTION

Continued weakness in industrial production growth trends

The unadjusted index of industrial production for the European Community is estimated provisionally by EUROSTAT to have reached the level of 115.1 (1975=100) in September 1980, a drop of 5.4% over the figure recorded in the corresponding month of the previous year. This latest result follows the pattern traced by this growth measure since the beginning of the year of progressively diminishing rates of change (January - May) followed by deteriorating and negative trends thereafter. A similar, though not identical state of affairs is indicated by data which illustrate the growth rate of industrial production over the last 12 months compared to the preceeding 12 months. These indicate that EUR-9 growth has fallen continuously and sharply in 1980 to only 1.3% at the end of the third quarter. This suggests that the annual growth of the EUR-9 index of industrial production in 1980 will be well below the results achieved in the previous two years (4.9% growth in 1979; 2.3% growth in 1978).

Turning to short-term trends in the seasonally adjusted indices, the latest data show that the index of industrial production in the Community attained the level of 113.3 (1975=100) in September 1980, a fall of 1.0% over the revised August figure of 114.4. More significantly for the sixth consecutive month short-term growth (percentage changes in three month moving averages of the seasonally adjusted industrial production indices) has deteriorated sharply and has remained below a zero rate. Looking for the causes of these phenomena in terms of the growth trends in the three major product regroupments it is clear that the downturn has been most prolonged and severe in the Community's intermediate goods sector (see table 2). However the latest evidence also shows a very sharp fall in short-term growth in the investment goods sector and a lesser, but nonetheless, significant drop in growth in the consumer goods industries as well, suggesting a widening in the range of industries in which production cutbacks are taking place. EUR-9 branch data for the third quarter of 1980 are not yet available, but on the basis of earlier information it is clear that short-term growth trends have been weakening across nearly the whole spectrum of industry. A sharp downturn in growth rates occurred relatively early in the year in the Chemical Industry (NACE 25), Motor Vehicles (NACE 35) and Paper Industry (NACE 471/2).

At the member state level, short-term industrial production growth trends have been weak in all countries reporting data for September 1980 with particularly sharp downturns occurring in Germany and Italy (see table 2). In both these countries the fall in short-term growth appeared to be most marked in the intermediate goods sector.



DE EUROPÆISKE FÆLLESSKABERS STATISTISKE KONTOR
STATISTISCHES AMT DER EUROPÄISCHEN GEMEINSCHAFTEN
STATISTICAL OFFICE OF THE EUROPEAN COMMUNITIES
OFFICE STATISTIQUE DES COMMUNAUTÉS EUROPÉENNES
ISTITUTO STATISTICO DELLE COMUNITÀ EUROPEE
BUREAU VOOR DE STATISTIEK DER EUROPESE GEMEENSCHAPPEN

Luxembourg-Kirchberg, Boîte postale 1907 — Tél. 43011 Télex : Comeur Lu 3423
1049 Bruxelles, Bâtiment Berlaymont, Rue de la Loi 200 (Bureau de liaison) — Tél. 735 80 40

N O T E S

1. Significance of growth rates A and B

— per working day:

- A last 12 months with respect to preceeding 12 months;
- B latest month with respect to the corresponding month of the previous year;

— seasonally adjusted:

- A last 3 months with respect to the preceeding 3 months;
- B latest month with respect to the previous month.

2. Methodological notes relating to the tables are published as supplements to the monthly bulletin.

3. For additional information on the Index of Industrial Production contact EUROSTAT, tel.: 4301-3264 or 4301-3450.

For additional information on all other indicators contact EUROSTAT, tel.: 4301-3521 or 4301-3450.

- 4. N.B.** : indicates that data are not available;
— indicates a non-existent series.

C O N T E N T S	Page
Indices of production	8
Turnover	29
New orders - Total	37
Number of employees	39
Wages and salaries	43

TABLEAU I

PRODUKTIONSINDIZES

INDICES OF PRODUCTION

INDICES DE PRODUCTION

Gesamte Industrie (ohne Baugewerbe)

Total industry (excluding building)

Ensemble de l'industrie (sans bâtiment)

saisonbereinigt

seasonally adjusted

désaisonnalisés

1975 = 100

	1977	1978	1979	1979			1980			SEP 80	JAS 80
				JUL	AUG	SEP	JUL	AUG	SEP	AUG 80	AMJ 80
TOT EUR 9	109.9	112.5	118.0	118.6	117.6	119.0	117.9	114.4	113.3	-1.0	-2.9
DEUTSCHLAND	110.5	112.7	118.9	120.3	116.2	121.0	119.0	117.3	113.5	-3.2	-3.9
FRANCE	110.7	113.2	117.6	119.3	118.9	119.2	118.6	117.7	114.6	-2.6	-0.4
ITALIA	111.6	114.0	122.8	118.9	120.5	123.9	130.0	117.2	125.4	7.1	-5.2
NEDERLAND	108.0	109.0	112.0	113.0	112.0	113.0	111.0	110.0	:	:	:
BELGIQUE/BELGIE	108.6	111.2	116.0	113.6	117.2	121.8	113.2	118.3	:	:	:
LUXEMBOURG	104.3	107.7	111.3	108.8	109.9	102.7	108.4	101.8	100.8	-1.0	-7.5
UNITED KINGDOM	107.6	110.9	115.0	117.8	114.4	113.4	107.2	105.4	102.8	-2.5	-2.3
IRELAND	117.7	128.8	137.4	138.6	135.9	142.3	134.2	134.6	:	:	:
DANMARK	110.1	112.6	116.7	116.5	117.9	112.2	121.7	110.0	105.5	5.0	-1.3
TOT EUR 9	109.9	112.5	118.0	118.6	117.6	119.0	117.9	114.4	113.3	-1.0	-2.9
INT EUR 9	112.3	115.5	122.8	123.6	123.9	124.4	120.5	116.3	116.3	0.0	-3.7
INV EUR 9	104.6	104.9	108.5	107.8	106.4	109.6	111.8	109.4	107.8	-1.5	-2.9
CON EUR 9	110.3	113.3	117.7	118.7	115.6	118.8	117.8	114.6	113.7	-0.9	-2.1

INT Grundstoff- und Produktionsgüterindustrien

Intermediate products industries

Industries des biens intermédiaires

INV Investitionsgüterindustrien

Capital goods industries

Industries des biens d'investissement

CON Verbrauchsgüterindustrien

Consumer goods industries

Industries des biens de consommation

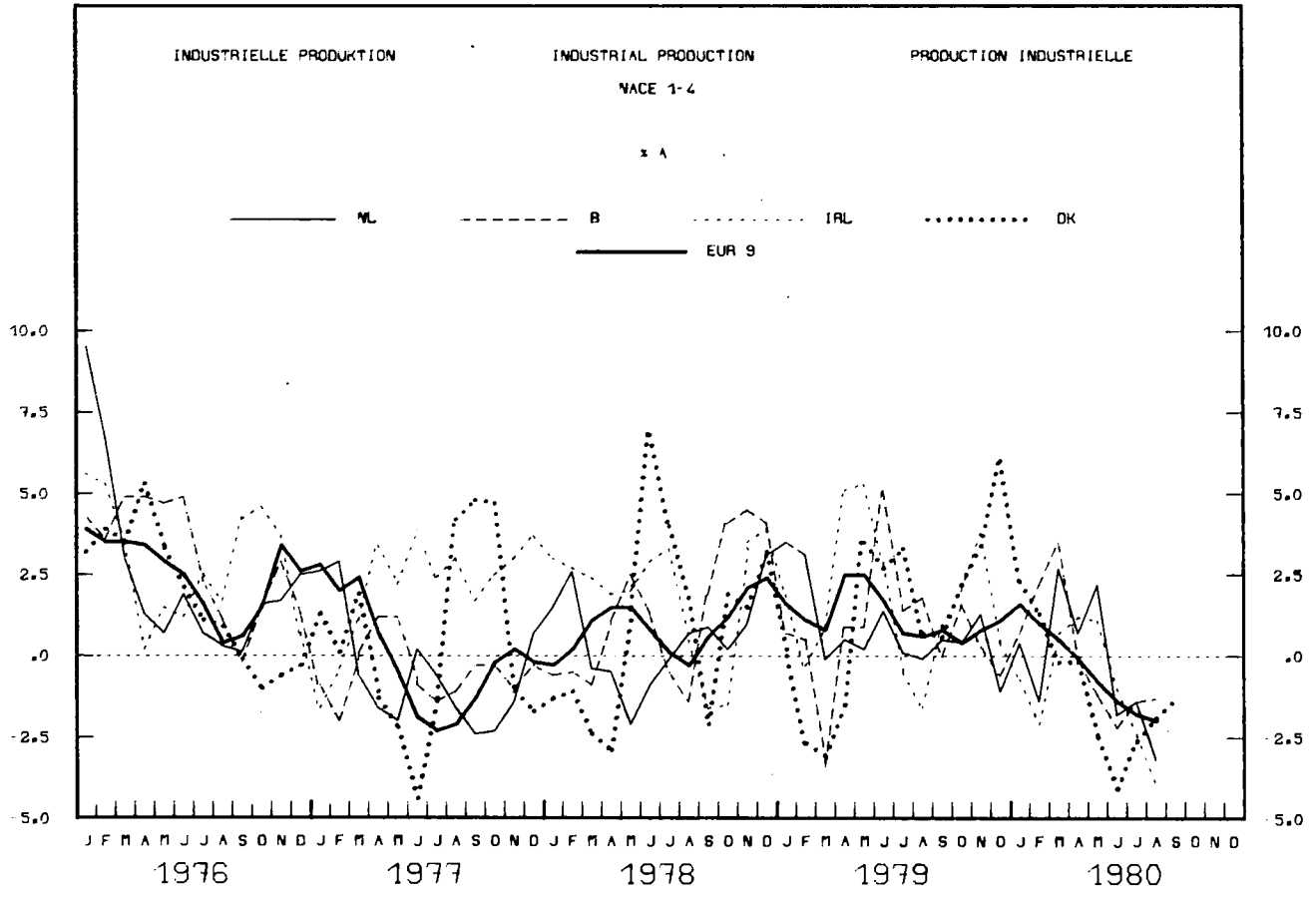
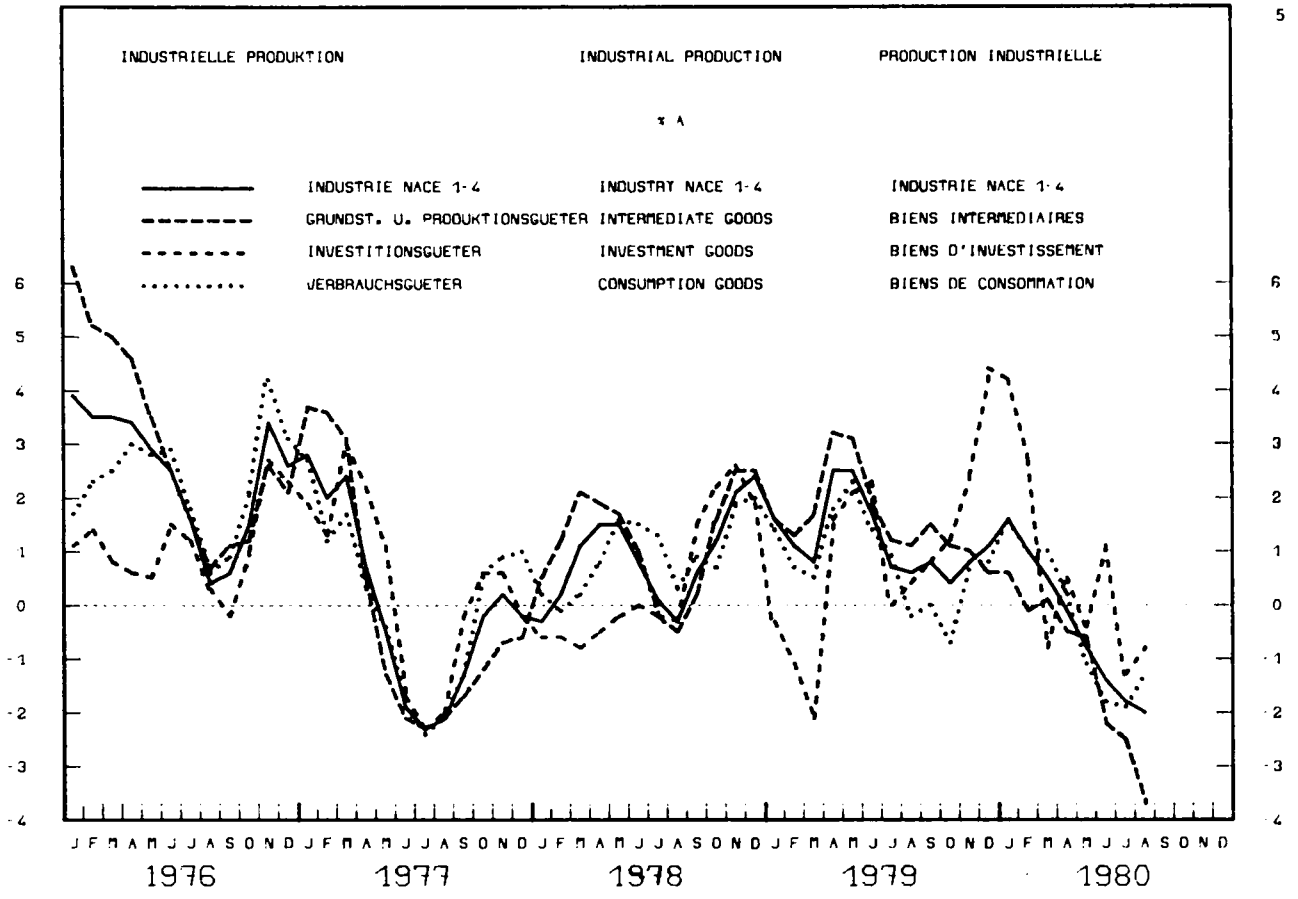


TABLEAU II

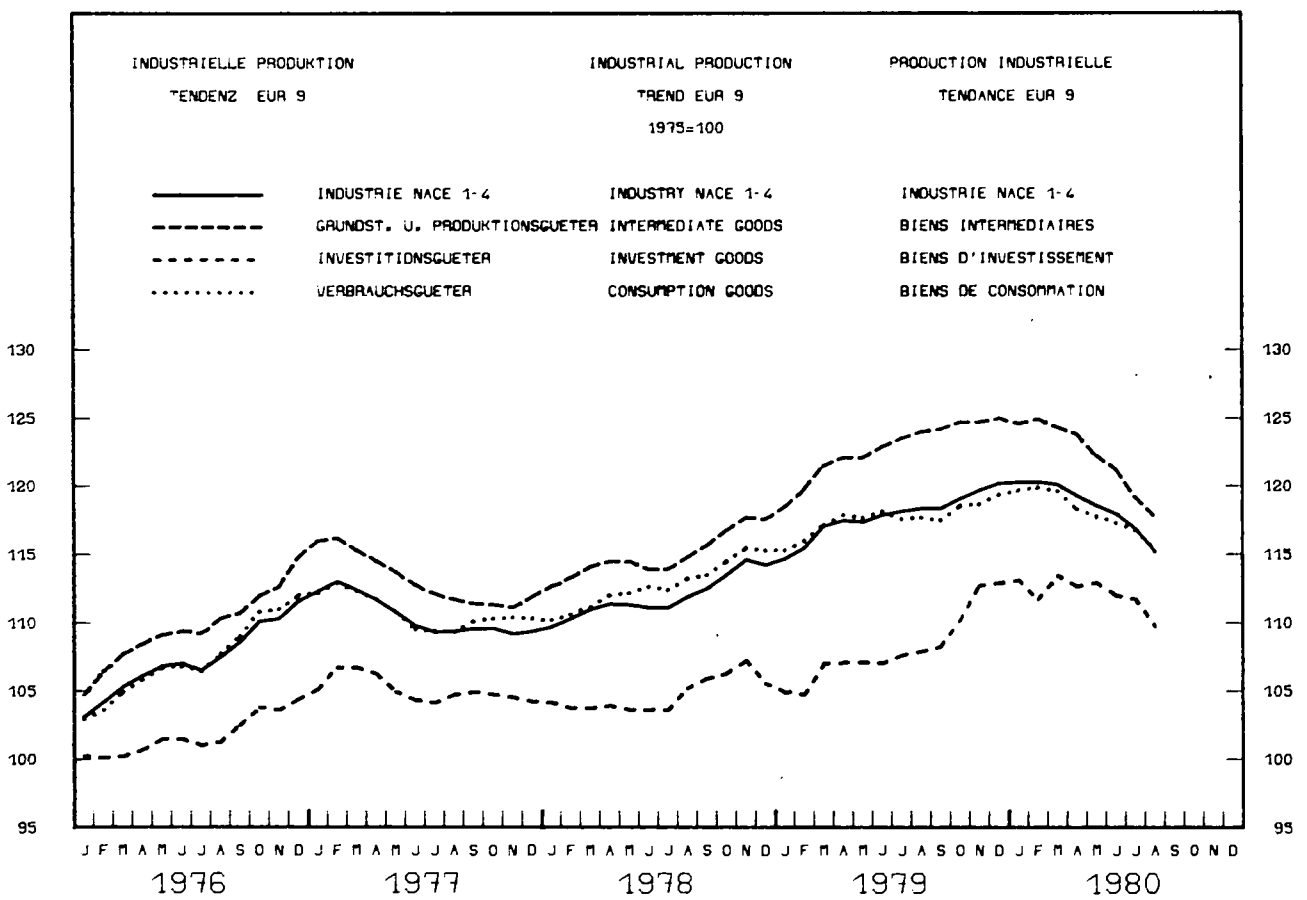
PRODUKTIONSINDIZES	INDICES OF PRODUCTION	INDICES DE PRODUCTION
Gesamte Industrie (ohne Baugewerbe)	Total industry (excluding building)	Ensemble de l'industrie (sans bâtiment)
saisonbereinigt	seasonally adjusted	désaisonnalisés
	1975=100	
Kurzfristiges Wachstum	Short Term Growth	Croissance à court terme
	%A	

	1979			1980								
	OCT	NOV	DEC	JAN	FEV	MAR	AVR	MAI	JUN	JUL	AUG	SEP
TOT EUR 9	0.4	0.8	1.1	1.6	1.0	0.5	-0.1	-0.8	-1.4	-1.8	-2.0	-2.9
DEUTSCHLAND	-0.6	1.0	1.9	2.9	1.5	0.3	0.3	0.3	-0.4	-1.5	-2.9	-3.9
FRANCE	0.8	0.0	-0.6	0.1	1.0	1.3	0.9	-1.0	-2.1	-2.4	-0.8	-0.4
ITALIA	5.2	6.8	5.5	3.0	1.9	1.3	2.7	0.9	1.2	-1.4	-3.0	-5.2
NEDERLAND	0.4	1.3	-1.1	0.4	-1.4	2.7	0.7	2.2	-1.8	-1.4	-3.2	:
BELGIQUE/BELGIE	1.6	0.3	-0.6	0.7	2.2	3.5	-0.1	-1.2	-2.2	-1.4	-1.3	:
LUXEMBOURG	-0.1	0.1	2.0	4.2	4.6	1.8	0.8	-1.2	-2.4	-5.1	-7.0	-7.5
UNITED KINGDOM	-3.0	-2.0	0.0	1.2	-1.0	-2.3	-4.4	-4.6	-4.4	-2.7	-1.3	-2.3
IRELAND	2.0	3.8	0.4	-0.7	-2.1	0.7	1.2	1.1	-1.0	-2.4	-4.1	:
DANMARK	2.2	3.4	6.0	2.3	1.3	-0.2	-0.2	-2.5	-4.1	-2.6	-1.9	-1.3
TOT EUR 9	0.4	0.8	1.1	1.6	1.0	0.5	-0.1	-0.8	-1.4	-1.8	-2.0	-2.9
INT EUR 9	1.1	1.0	0.6	0.6	-0.1	0.1	-0.5	-0.6	-2.2	-2.5	-3.7	-3.7
INV EUR 9	1.2	2.4	4.4	4.2	2.7	-0.8	0.5	-0.4	1.1	-1.3	-0.8	-2.9
CON EUR 9	-0.7	0.8	0.8	1.6	1.0	1.0	0.2	-1.1	-1.8	-1.9	-1.3	-2.1

% A : Wachstumsraten der saisonbereinigten Produktionsindizes der letzten 3 Monate gegenüber den vorhergehenden 3 Monaten

% A : Rate of growth of the seasonally adjusted index of production over the last 3 months with respect to the preceding 3 months

% A : Taux d'accroissement des indices de production désaisonnalisés des 3 derniers mois par rapport aux 3 mois précédents



PRODUKTIONSINDIZES

INDICES OF PRODUCTION

INDICES DE PRODUCTION

1975 = 100

1977	1978	1979	1979			1980						A	B
			JUL	AUG	SEP	MAR	APR	MAL	JUN	JUL	AUG		

NACE 1/4

GESAMTE INDUSTRIE (OHNE BAUGEWERBE)

TOTAL INDUSTRY (EXCLUDING BUILDING)

ENSEMBLE DE L'INDUSTRIE (SANS BATIMENT)

EUR9	PRO ARBEITSTAG			PER WORKING DAY									PAR JOUR OUVRABLE		
	1977	1978	1979	1979 JUL	1979 AUG	1979 SEP	1980 MAR	1980 APR	1980 MAL	1980 JUN	1980 JUL	1980 AUG	1980 SEP	A	B
EUR9	109.9	112.5	118.0	107.2	92.6	121.7	127.1	124.0	120.1	121.5	105.7	88.9	115.1	1.4	-5.4
D	110.5	112.7	118.9	106.8	100.0	123.5	126.4	126.8	124.8	124.3	104.5	99.2	114.4	2.2	-7.3
F	110.7	113.2	117.6	107.2	80.8	120.0	128.5	125.1	118.1	120.3	106.3	79.0	114.6	0.9	-4.4
I	111.6	114.0	122.8	118.2	70.0	132.6	138.3	140.6	132.0	136.0	128.5	63.3	132.5	6.5	-0.1
NL	108.2	108.7	111.7	91.0	97.0	112.0	121.0	118.0	112.0	110.0	89.0	94.0	:	1.1	-3.1
B	108.6	111.2	116.0	86.6	108.9	126.9	126.0	122.6	122.7	122.9	84.5	110.1	:	2.8	1.1
L	104.3	107.7	111.3	105.7	84.6	115.9	119.0	122.2	120.0	116.4	104.3	74.6	101.7	0.1	-12.3
UK	107.6	110.9	115.0	109.1	101.1	112.3	119.5	107.1	105.9	108.1	99.0	92.3	101.6	-3.8	-9.5
IRL	117.7	128.8	137.4	138.6	120.2	147.9	139.5	143.5	148.4	146.6	133.7	116.8	:	3.0	-2.8
DK	110.1	112.6	116.7	82.0	128.0	125.0	129.0	116.0	113.0	127.0	86.0	118.0	127.0	3.9	1.6

SAISONBEREINIGT

SEASONALLY ADJUSTED

DESAISONNALISE

EUR9	1977	1978	1979	1979 JUL	1979 AUG	1979 SEP	1980 MAR	1980 APR	1980 MAL	1980 JUN	1980 JUL	1980 AUG	1980 SEP	A	B
EUR9				118.6	117.6	119.0	120.7	119.6	117.7	118.4	117.9	114.4	113.3	-2.9	-1.0
D				120.3	116.2	121.0	124.0	121.6	121.9	120.5	119.0	117.3	113.5	-3.9	-3.2
F				119.3	118.9	119.2	119.6	119.8	116.0	116.4	118.6	117.7	114.6	-0.4	-2.6
I				118.9	120.5	123.9	129.0	134.2	127.1	131.7	130.0	117.2	125.4	-5.2	7.1
NL				113.0	112.1	113.4	116.6	112.7	113.8	111.4	111.1	109.6	:	-3.2	-1.3
B				113.6	117.2	121.6	121.7	116.1	118.4	120.1	113.2	118.3	:	-1.3	4.5
L				108.8	109.9	112.7	115.8	115.6	111.7	108.7	108.4	101.8	100.8	-7.5	-1.0
UK				117.8	114.4	113.4	111.0	108.0	106.3	108.4	107.2	105.4	102.8	-2.3	-2.5
IRL				138.6	135.9	142.3	139.2	140.0	141.9	135.1	134.2	134.6	:	-4.1	0.3
DK				116.5	117.9	112.2	121.4	119.5	115.0	117.4	121.7	110.0	115.5	-1.3	5.0

INT

GRUNSTOFF- UND PRODUKTIONSGUETERIND.

INTERMEDIATE PRODUCTS INDUSTRIEN

IND. DES BIENS INTERMEDIAIRES

EUR9	PRO ARBEITSTAG			PER WORKING DAY									PAR JOUR OUVRABLE		
	1977	1978	1979	1979 JUL	1979 AUG	1979 SEP	1980 MAR	1980 APR	1980 MAL	1980 JUN	1980 JUL	1980 AUG	1980 SEP	A	B
EUR9	112.3	115.5	122.8	111.8	99.5	124.2	132.5	128.1	123.8	121.9	107.8	91.1	115.9	0.5	-6.8
D	112.1	115.9	124.0	113.5	111.7	127.1	133.6	131.6	128.3	125.3	107.4	104.2	116.2	1.4	-8.6
F	111.0	113.4	119.9	110.1	84.8	121.0	130.8	126.3	119.9	117.7	108.4	79.5	115.4	1.2	-4.6
I	111.8	113.1	119.2	114.2	70.6	124.8	133.9	133.1	127.1	126.8	120.9	60.6	121.6	3.3	-2.6
NL	109.8	108.3	113.8	88.0	92.0	105.0	129.0	119.0	109.0	102.0	86.0	85.0	:	1.3	-7.6
B	110.9	114.8	120.9	91.4	112.9	131.1	131.1	128.6	128.9	127.8	87.8	112.8	:	2.8	-0.1
L	106.6	112.4	115.5	109.2	88.0	119.9	123.6	128.2	122.7	118.0	106.4	72.8	102.5	-1.2	-14.5
UK	115.4	121.4	130.5	123.3	115.0	125.7	133.1	122.2	120.3	120.3	109.8	101.6	109.6	-4.5	-12.8
IRL				-	-	-	-	-	-	-	-	-	-	-	-
DK	115.6	119.3	122.8	80.0	143.0	136.0	129.0	122.0	119.0	130.0	79.0	122.0	131.0	1.7	-3.7

SAISONBEREINIGT

SEASONALLY ADJUSTED

DESAISONNALISE

EUR9	1977	1978	1979	1979 JUL	1979 AUG	1979 SEP	1980 MAR	1980 APR	1980 MAL	1980 JUN	1980 JUL	1980 AUG	1980 SEP	A	B
EUR9				123.6	123.9	124.4	125.6	123.4	122.3	120.9	120.5	116.3	116.3	-3.7	-0.0
D				124.6	125.2	126.1	129.7	125.8	126.3	123.2	120.6	119.3	116.8	-4.9	-2.1
F				122.4	121.8	120.5	122.0	121.2	119.7	116.1	120.7	117.2	115.6	-1.0	-1.3
I				115.4	117.9	120.7	125.2	127.4	122.7	124.5	122.9	111.7	118.5	-5.7	6.1
NL				115.0	110.6	114.1	118.7	114.1	114.3	112.1	112.7	106.0	:	-4.7	-5.9
B				119.2	123.3	127.0	126.8	122.0	123.9	124.8	117.5	123.1	:	-2.0	4.8
L				113.3	116.4	115.8	119.6	120.6	114.3	109.6	111.2	102.7	101.2	-8.5	-1.4
UK				134.9	131.9	131.3	124.3	121.2	120.2	122.5	120.5	117.9	114.5	-3.0	-2.9
IRL				-	-	-	-	-	-	-	-	-	-	-	-
DK				123.8	128.4	120.1	123.1	120.9	116.1	113.6	124.5	109.2	116.1	-0.2	6.2

PRODUKTIONSINDIZES

INDICES OF PRODUCTION

INDICES DE PRODUCTION

1975 = 100

	1977	1978	1979	1979			1980						A	B	
				JUL	AUG	SEP	MAR	APR	MAI	JUN	JUL	AUG			SEP
INV															
INVESTITIONSGUETERINDUSTRIEN	CAPITAL GOODS INDUSTRIES						IND. DES BIENS D'INVESTISSEMENT								
	PRU ARBEITSTAG			PER WORKING DAY						PAR JOUR OUVRABLE					
EUR9	104.6	104.9	108.5	96.0	83.2	112.4	117.9	117.1	111.9	121.7	99.0	84.3	109.7	4.6	-2.4
D	105.1	104.4	110.3	100.1	88.4	115.7	118.5	120.2	119.7	125.0	103.7	96.0	112.6	6.9	-2.7
F	106.6	104.4	102.5	83.3	77.6	104.6	103.7	109.7	95.3	120.5	81.2	74.6	93.0	-1.2	-11.1
I	107.8	112.6	122.3	114.8	82.7	129.1	139.0	152.1	138.4	148.2	135.4	60.9	144.0	14.4	11.6
NL	106.5	108.2	108.4	90.0	98.0	123.0	117.0	118.0	114.0	116.0	93.0	100.0	1	1.5	2.0
B	105.5	109.3	111.9	81.6	110.4	127.0	116.1	114.4	110.3	118.1	83.2	105.1	1	4.0	-4.8
L	94.1	91.8	91.1	82.9	60.0	99.8	98.6	100.2	101.2	102.5	91.0	61.7	97.5	3.5	-2.3
UK	98.5	98.5	99.7	93.8	82.3	96.6	113.9	94.4	94.9	99.8	88.1	79.6	94.4	-0.8	-2.3
IRL	-	-	-	-	-	-	-	-	-	-	-	-	-	-	-
DK	111.2	113.3	117.7	70.0	119.0	122.0	135.0	122.0	113.0	134.0	74.0	112.0	126.0	5.8	3.3

	SAISONBEREINIGT			SEASONALLY ADJUSTED						DESAISONNALISE					
	EUR9	D	F	I	NL	B	L	UK	IRL	DK					
EUR9	107.8	106.4	109.6	113.0	114.6	110.2	113.9	111.8	109.4	107.8	-2.9	-1.5			
D	112.0	106.4	113.3	119.2	117.1	117.1	116.4	116.5	116.5	111.4	-1.8	-4.4			
F	99.1	105.3	107.2	100.6	106.4	95.0	107.6	98.9	101.8	95.8	-4.0	-5.8			
I	116.8	117.9	121.5	132.8	147.7	132.1	141.8	139.4	122.9	136.0	-5.5	10.7			
NL	107.8	112.6	115.9	116.7	110.2	114.0	106.8	111.3	114.2	1	-2.5	2.6			
B	107.7	113.3	119.9	115.5	109.9	110.1	118.2	110.6	109.2	1	0.7	-1.2			
L	86.3	87.7	97.4	95.0	94.6	99.1	99.1	94.9	91.4	95.3	-3.8	4.3			
UK	101.3	96.5	94.6	99.3	97.1	95.6	97.1	95.6	94.2	93.1	-2.4	-1.2			
IRL	-	-	-	-	-	-	-	-	-	-	-	-	-		
DK	115.6	116.8	108.7	125.6	127.7	120.5	122.0	122.9	112.5	115.2	-5.3	2.4			

	VERBRAUCHSGUETERINDUSTRIEN			CONSUMER GOODS INDUSTRIES						IND. DES BIENS DE CONSOMMATION					
	EUR9	D	F	I	NL	B	L	UK	IRL	DK					
EUR9	110.3	113.3	117.7	107.4	88.3	124.5	124.7	123.5	119.5	122.0	106.4	86.4	118.2	0.9	-5.0
D	111.0	115.0	118.6	104.2	94.6	124.1	123.5	125.9	124.5	123.6	102.5	96.5	114.4	0.7	-7.9
F	115.6	119.3	124.6	114.7	68.3	132.4	137.0	135.5	127.5	131.1	112.8	67.3	126.6	0.5	-4.3
I	113.0	115.1	127.8	125.2	72.5	144.8	144.0	146.0	136.1	143.3	136.1	64.4	142.4	7.6	-1.6
NL	106.8	109.8	111.5	97.0	103.0	113.0	110.0	116.0	117.0	116.0	95.0	105.0	1	0.8	1.9
B	105.5	104.9	108.3	78.7	104.7	118.6	117.3	115.9	113.2	115.1	78.9	105.9	1	2.5	1.1
L	99.9	98.0	102.3	109.0	90.0	102.1	109.9	110.9	112.6	119.1	108.4	96.9	102.4	3.5	0.3
UK	104.6	107.1	106.5	102.3	94.0	107.1	105.1	96.8	95.1	98.0	93.3	90.3	96.6	-5.1	-9.8
IRL	-	-	-	-	-	-	-	-	-	-	-	-	-	-	-
DK	106.4	107.8	111.8	91.0	125.0	119.0	125.0	109.0	110.0	120.0	98.0	119.0	126.0	4.3	5.9

	SAISONBEREINIGT			SEASONALLY ADJUSTED						DESAISONNALISE					
	EUR9	D	F	I	NL	B	L	UK	IRL	DK					
EUR9	118.7	115.6	118.8	119.7	119.0	116.3	118.0	117.8	114.6	113.7	-2.1	-0.9			
D	120.3	113.1	122.4	121.1	120.0	120.1	119.7	118.5	116.8	113.7	-3.0	-2.6			
F	126.4	125.7	127.0	127.5	128.2	122.6	124.3	125.5	125.1	121.5	-0.8	-2.9			
I	125.1	122.3	129.0	136.5	139.0	131.8	138.1	135.7	122.3	129.0	-5.3	5.5			
NL	113.6	110.5	108.6	111.4	112.8	114.1	113.6	111.6	112.9	1	-0.0	1.1			
B	105.1	110.2	111.3	111.8	109.8	111.8	111.2	107.0	111.2	1	-1.2	3.9			
L	102.7	96.9	103.4	110.5	107.8	103.4	109.6	103.3	104.6	104.1	-2.7	-0.5			
UK	107.7	105.6	105.1	102.6	99.0	95.9	98.4	98.4	97.6	94.7	-0.9	-3.0			
IRL	-	-	-	-	-	-	-	-	-	-	-	-	-		
DK	112.9	112.3	108.4	118.3	114.8	111.7	116.2	119.8	108.1	115.8	0.3	7.2			

PRODUKTIONSINDIZES

INDICES OF PRODUCTION

INDICES DE PRODUCTION

1975 = 100

	1977			1978			1979			1980								
							JUL	AUG	SEP	MAR	APR	MAI	JUN	JUL	AUG	SEP	A	B
BERGBAU U. GEWINNUNG VON STEINEN U. ERDEN							MINING AND QUARRYING						INDUSTRIES EXTRACTIVES					
	PRO ARBEITSTAG						PER WORKING DAY						PAR JOUR OUVRABLE					
EUR9	125.0	139.1	161.0	158.8	153.1	163.0	172.0	164.0	162.2	159.7	151.3	145.3	:	:	:	4.4	-5.1	
D	95.6	97.4	101.7	97.6	97.8	104.8	103.8	106.0	103.9	101.7	94.2	93.1	98.4	98.4	98.4	-0.6	-6.1	
F	96.2	94.5	95.2	86.0	74.8	100.5	101.6	101.3	99.3	101.3	85.7	73.3	99.0	99.0	99.0	1.7	-1.5	
I	98.0	98.6	105.6	92.8	90.1	103.9	111.8	110.9	97.5	91.8	81.0	78.2	:	:	:	-0.8	-13.2	
NL	103.7	95.4	100.3	59.0	57.0	74.0	126.0	99.0	75.0	65.0	61.0	47.0	:	:	:	-2.6	-17.5	
B	91.1	83.7	77.7	44.8	69.3	77.3	89.4	89.9	78.6	79.8	56.1	71.1	:	:	:	-0.7	2.6	
L	69.8	47.0	40.3	40.7	37.0	44.4	48.1	46.1	46.2	40.9	36.7	20.4	39.4	39.4	39.4	-0.9	-11.3	
UK	187.6	232.4	294.5	306.8	294.0	299.0	315.1	291.9	298.2	295.0	290.4	279.7	280.7	280.7	280.7	4.5	-6.1	
IRL	98.6	115.4	122.6	181.6	138.8	137.6	:	:	:	:	:	:	:	:	:	6.2		
DK	-	-	-	:	:	:	:	:	:	:	:	:	:	:	:	:		

	SAISONBEREINIGT			SEASONALLY ADJUSTED						DESAISONNALISE								
EUR9				168.9	165.6	166.5	168.7	161.5	161.2	160.4	160.8	157.7	:	:	:	-2.5	-2.0	
D				104.0	103.3	101.6	103.5	102.9	103.2	101.5	100.9	98.4	95.3	95.3	95.3	-4.2	-3.1	
F				100.5	97.8	97.1	95.7	94.9	94.7	97.1	98.7	96.3	95.7	95.7	95.7	1.4	-0.6	
I				105.2	108.9	107.6	104.3	108.5	106.3	102.6	95.2	98.0	:	:	:	-7.3	3.0	
NL				95.9	91.5	92.2	107.2	96.1	92.2	92.5	99.2	86.4	:	:	:	-5.8	-12.9	
B				81.0	77.3	75.7	80.4	80.7	75.0	74.0	90.9	79.8	:	:	:	3.7	-12.2	
L				34.0	45.3	43.0	47.9	41.8	41.3	36.5	33.2	30.5	38.3	38.3	38.3	-14.7	25.8	
UK				314.2	307.1	312.3	312.9	291.8	293.0	294.3	295.3	290.6	290.3	290.3	290.3	-0.3	-0.1	
IRL				133.1	112.8	120.1	:	:	:	:	:	:	:	:	:	:		
DK				-	-	-	-	-	-	-	-	-	-	-	-			

	RE- UND VERARBEITENDE INDUSTRIE			MANUFACTURING INDUSTRIES						INDUSTRIES MANUFACTURIERES							
EUR9	109.6	111.5	116.3	107.4	90.3	122.1	123.9	123.7	120.2	122.6	105.7	87.1	:	:	:	2.6	-3.6
D	110.9	112.9	119.0	107.5	99.9	124.7	126.3	127.4	126.0	126.2	105.2	99.8	115.5	115.5	115.5	2.5	-7.4
F	111.4	113.4	118.1	109.8	83.3	123.1	125.1	127.5	120.9	124.8	108.1	82.1	117.6	117.6	117.6	1.0	-4.4
I	111.7	113.9	121.9	119.3	67.2	134.4	138.9	142.7	134.1	138.8	130.6	60.6	:	:	:	9.2	-9.8
NL	109.1	110.6	113.3	98.0	105.0	121.0	118.0	122.0	120.0	120.0	94.0	104.0	:	:	:	2.1	-1.0
B	108.9	111.8	117.1	87.5	112.2	125.1	124.3	123.7	123.4	125.3	84.1	110.7	:	:	:	2.7	-11.3
L	106.1	110.2	114.5	109.9	86.2	119.6	122.7	126.4	125.1	121.7	107.3	77.5	106.3	106.3	106.3	0.6	-11.1
UK	103.0	103.8	104.2	99.8	91.3	103.2	106.1	95.9	95.0	98.8	88.8	82.4	92.5	92.5	92.5	-5.3	-10.4
IRL	119.1	129.7	138.4	135.2	118.4	148.5	141.4	144.9	146.1	146.8	132.2	115.6	:	:	:	2.6	-2.4
DK	110.1	112.6	116.7	82.0	128.0	125.0	129.0	116.0	113.0	127.0	86.0	118.0	127.0	127.0	127.0	3.9	1.6

	SAISONBEREINIGT			SEASONALLY ADJUSTED						DESAISONNALISE							
EUR9				117.1	115.1	117.5	119.1	118.6	116.2	117.1	116.1	113.5	:	:	:	-2.1	-2.2
D				120.4	115.9	121.2	124.4	122.0	122.1	120.7	119.4	117.8	113.8	113.8	113.8	-3.8	-3.4
F				120.0	120.5	120.3	119.0	120.7	116.3	117.1	118.7	119.5	115.5	115.5	115.5	-0.1	-3.3
I				118.4	118.7	124.0	132.4	134.8	127.5	132.7	130.8	117.2	:	:	:	-3.5	-10.4
NL				115.4	114.5	117.0	117.8	116.1	118.1	114.8	112.2	114.0	:	:	:	-3.1	1.6
B				114.4	119.7	123.2	120.7	117.3	119.0	121.5	112.9	118.1	:	:	:	-1.3	4.6
L				112.8	113.0	116.2	119.1	119.6	115.8	112.6	111.3	106.0	105.1	105.1	105.1	-7.3	-0.8
UK				106.5	103.0	101.6	98.4	97.1	94.8	96.8	95.2	94.0	91.2	91.2	91.2	-2.9	-3.0
IRL				138.4	137.3	143.0	140.3	140.6	140.2	136.6	135.8	135.8	:	:	:	-3.1	-0.0
DK				116.5	117.9	112.2	121.4	119.5	115.0	117.4	121.7	110.0	115.5	115.5	115.5	-1.3	5.0

PRODUKTIONSINDIZES

INDICES OF PRODUCTION

INDICES DE PRODUCTION

1975 = 100

	1977	1978	1979	1979			1980						A	B	
				JUL	AUG	SEP	MAR	APR	MAI	JUN	JUL	AUG			SEP
NACE : 21															
ERZBERGBAU (GEWINNUNG U. AUFBEREITUNG)				EXTRN.,PREPN.,METALLIFEROUS ORES						EXTRN.,PREPN.,MINERAIS METALLIQUES					
	PRO ARBEITSTAG			PER WORKING DAY						PAR JOUR OUVRABLE					
EUR9	81.8	66.1	55.1	53.2	38.7	56.9	58.9	58.5	53.7	57.8	56.9	40.8	:	-3.0	5.5
D	85.7	62.0	45.2	47.1	25.8	49.7	51.1	50.6	43.1	50.3	54.0	33.8	53.5	-1.4	7.6
F	89.1	85.3	84.0	74.6	74.0	67.0	86.7	85.0	89.8	86.8	83.1	71.5	86.1	2.1	-1.0
I	65.0	60.0	52.7	52.2	37.2	48.9	56.3	57.0	48.2	51.5	46.5	35.1	:	-5.1	-5.5
NL															
B															
L	67.3	36.4	27.5	25.2	24.5	27.5	31.7	30.8	28.9	26.1	21.6	4.9	23.8	-4.9	-13.5
UK	110.3	87.3	76.6	55.6	49.8	75.3	60.6	61.8	67.5	74.4	62.3	45.4	60.3	-12.2	-19.9
IRL															
DK															

	SAISONBEREINIGT			SEASONALLY ADJUSTED						DESAISONNALISE					
EUR9				58.5	49.5	53.5	56.2	55.9	54.3	54.3	62.1	53.8	:	2.3	-13.4
D				55.5	30.5	44.7	48.7	48.9	46.5	47.1	60.7	45.5	50.4	9.9	10.8
F				85.4	88.0	83.1	84.9	82.6	88.9	82.8	91.2	85.0	83.1	2.0	-2.2
I				49.9	50.6	48.3	54.0	54.7	47.3	48.9	47.0	50.3	:	-6.3	7.0
NL															
B															
L				19.6	31.8	28.4	31.7	27.9	26.2	23.1	19.3	17.4	25.6	-19.3	47.1
UK				62.5	76.4	72.2	52.6	54.9	59.4	73.7	69.1	69.4	58.3	4.7	-16.0
IRL															
DK															

NACE : 22

	ERZEUGUNG U.ERSTE BEANBEITUNG VON METALLEN			PRDN.,PRELIMINARY PROCESS. OF METALS						PRDN.,PREMIERE TRANSFORMAT. METAUX					
	PRO ARBEITSTAG			PER WORKING DAY						PAR JOUR OUVRABLE					
EUR9	106.5	110.3	116.2	110.1	95.3	124.4	118.8	123.7	122.2	121.0	105.3	85.5	:	2.0	-10.3
D	104.1	110.0	119.1	111.3	117.5	127.5	126.8	125.7	125.5	122.3	105.0	109.9	113.5	1.9	-11.0
F	109.1	113.4	118.4	114.9	77.3	126.2	134.1	132.8	125.3	126.0	115.4	72.6	112.7	6.6	-10.7
I	110.3	110.2	115.7	109.1	76.5	126.5	138.4	136.1	133.5	128.6	124.2	67.8	:	12.9	-11.4
NL	107.1	113.8	115.8	114.0	106.0	126.1	115.0	:	:	:	:	:	:	2.5	
B	108.6	119.3	129.1	103.5	116.8	136.2	137.7	139.9	142.5	135.9	90.1	111.6	:	-1.1	-4.5
L	104.4	109.6	113.5	101.3	91.6	116.3	127.5	128.0	126.7	119.6	103.9	75.1	99.1	2.9	-14.8
UK	103.9	103.9	105.5	105.6	84.0	111.6	62.5	92.9	95.7	101.6	81.2	65.2	76.1	-21.3	-31.8
IRL															
DK	125.1	137.7	136.9	67.0	148.0	141.0	165.0	145.0	153.0	162.0	77.0	140.0	143.0	10.9	1.4

	SAISONBEREINIGT			SEASONALLY ADJUSTED						DESAISONNALISE					
EUR9				117.0	118.8	119.8	112.1	117.2	114.9	115.2	112.5	109.2	:	-2.1	-2.9
D				118.0	125.8	124.6	120.7	119.0	118.2	115.6	113.6	117.4	111.2	-3.0	-5.3
F				122.1	119.2	119.7	124.2	127.9	119.4	115.7	123.5	117.4	110.3	-3.3	-6.0
I				109.9	112.7	118.7	132.3	130.8	126.3	128.3	127.8	110.5	:	-5.8	-13.5
NL				125.7	110.5	121.6	116.9	:	:	:	:	:	:		
B				126.5	134.6	135.1	131.3	130.5	131.3	134.3	115.6	127.2	:	-4.1	10.0
L				107.0	116.6	112.0	120.8	120.5	115.6	110.2	111.6	104.2	99.1	-9.1	-4.9
UK				111.8	104.9	107.8	56.0	84.6	87.6	93.3	82.3	82.7	70.3	-11.4	-15.0
IRL															
DK				136.4	144.3	129.4	144.2	152.2	156.0	142.5	150.1	139.3	135.8	-5.7	-2.5

PRODUKTIONSINDIZES

INDICES OF PRODUCTION

INDICES DE PRODUCTION

1975 = 100

	1977			1978			1979			1980			A		B	
	JUL	AUG	SEP	MAR	APR	MAY	JUN	JUL	AUG	SEP						
NACE 1 23																
GEN. VON NICHT-ENERG. MINERALIEN, TORFGEWINN.				EXTR. MINERALS NON-MET. ENERG., PEAT				EXTRACTION MIN. NON-MET., TOURBIERES								
PRO ARBEITSTAG				PER WORKING DAY				PAR JOUR OUVRABLE								
EUR9	101.3	106.9	112.6	121.1	115.4	131.5	111.3	120.0	122.0	126.6	110.5	109.0	:	3.8	-5.6	
D	103.1	110.5	118.7	135.4	127.3	149.7	111.4	126.2	135.2	139.4	116.4	117.5	130.0	2.5	-13.1	
F	100.9	102.4	106.4	116.3	91.1	118.7	118.1	123.4	118.1	124.7	114.7	90.8	120.1	6.3	1.2	
I	107.2	107.2	121.1	128.8	118.1	133.2	113.0	122.9	125.1	134.1	125.1	122.7	:	7.2	3.9	
ML	108.3	103.8	88.0	67.0	101.0	107.0	114.0	117.0	98.0	112.0	56.0	92.0	:	7.4	-8.9	
B	103.4	97.4	98.3	52.2	123.8	133.9	117.0	128.2	130.3	129.0	61.0	127.0	:	16.1	2.6	
L	78.2	83.9	86.0	94.3	80.4	102.9	104.8	99.3	106.1	91.9	88.8	74.4	93.2	3.5	-9.4	
UK	94.9	105.9	107.6	116.7	114.4	116.3	104.7	107.2	107.2	107.2	103.1	103.2	103.5	-3.8	-11.0	
IRL																
DK	110.0	108.4	114.2	87.0	134.0	145.0	113.0	117.0	111.0	141.0	92.0	120.0	172.0	7.2	18.6	

	SAISONREINIGT			SEASONALLY ADJUSTED			DESAISONNALISE								
EUR9				119.3	115.9	119.1	118.7	114.5	113.0	113.3	109.4	110.0	:	-3.9	0.5
D				126.0	121.2	126.7	126.3	120.5	120.4	118.1	110.0	112.6	107.0	-8.2	-5.0
F				116.4	109.9	113.5	115.1	116.2	109.9	114.3	115.0	111.2	114.4	0.1	2.9
I				121.6	124.7	129.8	120.4	121.4	122.0	125.6	118.6	128.8	:	2.5	8.6
ML				99.4	86.8	86.9	114.3	106.8	92.3	93.5	92.9	83.9	:	-13.7	-9.7
B				99.4	106.0	111.2	112.6	116.8	115.9	110.2	111.4	110.3	:	-3.9	-1.0
L				89.7	88.1	91.2	103.8	91.9	94.8	85.1	85.1	83.4	82.7	-7.6	-0.9
UK				116.0	113.2	112.7	109.8	102.6	103.4	103.2	102.2	101.1	99.3	-2.1	-1.7
IRL															
DK				118.1	124.5	112.3	120.0	112.7	102.1	117.0	123.5	106.9	131.1	9.0	22.7

NACE 1 24

	BE- U. VERARBEITUNG VON STEINEN U. ERDEN			NON-METALLIC MINERAL PRODUCTS			PRODUITS MINERAUX NON-METALLIQUES								
	PRO ARBEITSTAG			PER WORKING DAY			PAR JOUR OUVRABLE								
EUR9	109.3	110.5	115.4	115.5	101.7	127.0	125.9	127.3	128.1	129.6	113.9	95.6	:	5.9	-6.1
D	111.9	114.2	122.0	126.4	123.3	139.7	131.0	137.0	137.2	137.1	121.2	118.1	126.4	6.1	-8.1
F	106.0	108.0	114.5	115.0	80.5	121.8	127.4	127.9	123.2	127.8	121.5	84.6	126.8	5.1	4.2
I	112.1	111.5	118.1	119.6	74.8	124.4	137.1	134.8	134.9	143.3	137.8	72.3	:	9.9	-3.3
ML	111.1	112.4	113.3	80.0	118.0	130.0	127.0	137.0	134.0	133.0	77.0	:	:	11.9	-3.7
B	114.5	117.3	117.7	91.0	124.1	138.1	132.4	129.3	153.0	140.7	93.6	129.8	:	8.2	4.6
L	98.0	101.7	107.2	125.7	79.6	133.6	134.6	134.1	133.9	137.4	132.1	93.2	127.9	10.3	-4.4
UK	99.0	100.3	100.4	99.4	97.6	103.8	100.1	93.4	95.0	97.5	85.3	83.5	87.1	-5.3	-16.1
IRL	105.0	119.1	131.6	135.1	114.5	140.5	:	:	:	:	:	:	:	10.6	
DK	116.0	118.5	115.8	93.0	150.0	143.0	112.0	104.0	111.0	116.0	72.0	107.0	115.0	-4.2	-19.6

	SAISONREINIGT			SEASONALLY ADJUSTED			DESAISONNALISE									
EUR9				117.7	117.5	119.0	123.6	120.5	120.2	120.2	119.4	113.5	:	-3.1	-5.0	
D				126.0	125.4	128.5	133.3	128.4	128.5	126.2	122.5	122.4	118.8	-5.0	-2.9	
F				118.7	113.9	118.1	120.5	118.8	115.8	116.8	124.2	118.6	122.2	3.9	3.0	
I				115.7	118.5	116.5	129.3	131.6	130.9	133.8	133.7	120.6	:	-0.4	-11.1	
ML				117.9	114.9	121.6	124.1	124.1	123.7	122.5	118.5	:	:	-4.2	-3.3	
B				114.1	120.5	127.6	150.8	116.8	137.4	127.6	120.6	127.0	:	-2.6	5.3	
L				110.8	105.9	121.7	131.2	126.8	120.0	120.6	116.5	123.0	115.8	-3.3	-5.9	
UK				103.1	102.1	102.4	97.5	93.9	91.6	93.4	89.6	88.4	86.2	-6.0	-2.5	
IRL				132.4	134.1	133.9	:	:	:	:	:	:	:	:		
DK				125.3	127.9	118.1	114.8	108.4	104.5	98.2	103.8	89.1	92.7	-8.2	4.1	

PRODUKTIONSINDIZES

INDICES OF PRODUCTION

INDICES DE PRODUCTION

1975 = 100

	1977			1978			1979			1979			1980			A	B
	JUL	AUG	SEP	MAR	APR	MAI	JUN	JUL	AUG	SEP							
NACE : 31/36																	
METALLVERARBEITENDE INDUSTRIE				ENGINEERING AND ALLIED INDUSTRIES									INDUSTRIES TRANSFORMATRICES DES METAUX				
PRO ARBEITSTAG				PER WORKING DAY									PAR JOUR OUVRABLE				
EUR9	108.6	109.9	114.0	99.5	81.0	119.8	123.9	122.0	116.7	123.2	105.5	83.0	:	4.3	2.6		
D	112.2	112.8	118.4	102.0	90.4	124.3	127.4	129.3	127.2	129.8	102.8	93.5	115.8	3.6	-6.9		
F	110.9	112.7	117.0	99.7	73.0	130.3	124.5	121.8	110.1	123.5	118.3	99.3	147.7	6.4	13.4		
I	109.5	113.4	121.1	113.1	52.1	128.0	138.6	148.7	137.4	143.9	133.2	47.5	:	11.6	-8.7		
ML	106.6	107.9	108.0	90.0	98.0	123.0	117.0	:	:	:	:	:	:	2.6			
B	109.9	112.8	117.8	85.7	115.9	133.6	123.3	123.3	119.1	127.8	87.1	113.3	:	5.7	-2.2		
L	111.7	111.0	113.1	109.7	71.0	117.4	119.4	122.3	120.6	122.1	108.7	70.0	116.8	1.0	-0.5		
UK	99.3	98.8	98.3	92.0	79.3	91.8	107.8	91.0	90.9	95.7	83.6	75.8	88.1	-3.1	-4.0		
IRL	124.5	129.9	141.0	138.1	107.9	156.6	:	:	:	:	:	:	:	8.6			
DK	111.3	113.1	117.8	69.0	123.0	124.0	133.0	121.0	113.0	133.0	73.0	115.0	128.0	5.7	3.2		

	SAISONBEREINIGT			SEASONALLY ADJUSTED			DESAISONNALISE			A	B	
EUR9	113.4	111.3	114.1	115.1	118.0	113.7	115.3	120.0	115.2	:	0.2	-4.0
D	119.8	113.6	120.3	125.2	123.9	122.9	121.6	121.9	119.4	113.6	-3.7	-8.9
F	115.4	119.0	121.5	119.2	118.6	104.8	116.4	133.2	133.3	136.3	16.8	2.3
I	112.8	117.8	117.6	132.6	139.3	128.4	128.5	135.5	117.8	:	-4.6	-13.1
ML	107.7	112.3	115.7	116.5	:	:	:	:	:	:		
B	113.5	118.9	126.1	122.7	118.2	118.8	128.1	116.9	117.8	:	0.9	0.7
L	112.6	104.9	116.1	115.8	114.9	114.0	116.1	111.6	106.7	114.8	-3.4	7.6
UK	101.1	94.5	91.4	95.0	92.7	90.7	93.2	92.2	91.2	88.5	-1.7	-2.9
IRL	145.9	142.2	150.8	:	:	:	:	:	:	:		
DK	115.3	120.0	111.2	123.6	125.1	118.5	120.0	122.1	113.7	117.2	-2.9	3.1

NACE : 31

	HERSTELLUNG VON METALLERZEUGNISSEN			MANUFACTURE OF METAL ARTICLES			FABRICATION D'OUVRAGES EN METAUX			A	B				
	PRO ARBEITSTAG			PER WORKING DAY			PAR JOUR OUVRABLE								
EUR9	111.0	109.0	113.2	99.3	91.1	114.4	124.2	:	:	:	:	6.6			
D	109.9	107.4	113.9	97.1	96.3	119.3	124.8	126.6	126.3	125.0	96.7	99.9	113.7	5.6	-4.7
F	103.0	103.5	110.5	94.8	94.8	94.8	120.4	:	:	:	:	:	:	9.2	
I	106.1	102.9	104.2	105.6	42.7	115.2	127.8	127.5	126.4	127.7	121.9	33.2	:	13.8	-22.2
ML	114.3	115.5	114.2	83.0	98.0	139.0	139.0	140.0	130.0	137.0	95.0	:	:	11.3	14.5
B	108.2	103.5	108.2	84.0	108.1	122.5	117.7	117.8	116.9	124.2	89.0	117.6	:	9.1	8.8
L	136.4	140.9	149.6	152.9	90.8	144.1	154.0	156.8	150.5	154.2	137.6	84.1	147.7	-1.0	2.5
UK	101.5	98.8	97.1	92.4	81.4	98.6	97.1	85.9	84.0	90.6	76.2	72.6	82.4	-7.7	-16.4
IRL	-	-	-	-	-	-	-	-	-	-	-	-	-		
DK	117.8	122.9	136.8	76.0	149.0	146.0	150.0	138.0	125.0	140.0	81.0	139.0	152.0	7.4	4.1

	SAISONBEREINIGT			SEASONALLY ADJUSTED			DESAISONNALISE			A	B	
EUR9	113.3	112.9	115.8	119.5	:	:	:	:	:	:		
D	112.9	114.9	117.7	122.8	120.9	122.2	118.2	115.5	119.2	113.7	-3.6	-4.6
F	112.4	112.4	112.4	116.4	:	:	:	:	:	:		
I	100.5	100.7	104.8	119.4	121.7	116.0	121.0	120.6	100.7	:	-4.1	-16.5
ML	:	:	:	:	:	:	:	:	:	:		
B	111.6	107.7	115.1	117.0	113.8	115.1	122.2	117.0	117.9	:	3.3	0.8
L	155.1	134.3	144.0	150.8	147.1	140.2	143.3	139.2	131.5	145.9	-3.3	11.0
UK	100.2	93.9	95.5	88.3	87.6	86.3	87.3	83.8	85.0	79.4	-5.0	-8.6
IRL	-	-	-	-	-	-	-	-	-	-		
DK	127.7	132.7	130.8	141.6	141.9	127.0	126.3	136.5	126.7	138.2	1.6	9.1

PRODUKTIONSINDIZES

INDICES OF PRODUCTION

INDICES DE PRODUCTION

1975 = 100

1977	1978	1979	1979			1980						A	B
			JUL	AUG	SEP	MAR	APR	MAI	JUN	JUL	AUG		

NACE : 32

MASCHINENBAU

MECHANICAL ENGINEERING

CONSTR., MACHINES, MATERIEL MECANIQUE

EUR9	PRO ARBEITSTAG			PER WORKING DAY									PAR JOUR OUVRABLE		
	100.9	100.8	104.1	95.7	78.3	106.9	111.7	:	:	:	:	:	:	5.5	
D	101.5	101.9	107.3	96.9	84.3	109.3	113.2	114.0	114.7	123.0	103.0	88.6	108.1	6.5	-1.1
F	102.3	105.0	109.8	100.3	100.3	100.3	106.7	:	:	:	:	:	:	5.6	
I	106.1	103.1	106.9	110.8	40.4	139.6	122.5	130.5	125.8	130.4	127.1	41.8	:	16.8	3.6
NL	100.8	102.3	101.4	88.0	94.0	123.0	101.0	102.0	106.0	110.0	79.0	:	:	-2.0	-10.2
B	99.8	100.5	107.0	82.1	103.8	122.7	111.6	108.4	108.8	109.6	84.8	98.0	:	3.7	-5.6
L	87.3	89.9	89.8	84.6	60.1	99.8	93.7	95.8	97.3	97.1	85.2	61.2	89.8	-1.6	-10.0
UK	93.3	92.0	89.4	84.7	68.8	78.8	102.1	84.9	82.9	87.1	75.3	64.8	:	-4.0	-5.8
IRL															
DK	112.3	113.1	115.4	68.0	116.0	118.0	131.0	123.0	110.0	137.0	70.0	104.0	123.0	4.9	4.2

SAISONBEREINIGT

SEASONALLY ADJUSTED

DESAISONNALISE

EUR9	SAISONBEREINIGT			SEASONALLY ADJUSTED									DESAISONNALISE		
	104.6	101.1	106.2	108.5	:	:	:	:	:	:	:	:	:		
D	108.2	102.5	107.7	113.5	112.3	112.8	112.0	114.7	109.2	107.3				-1.7	-1.8
F	112.8	112.8	112.8	109.8	:	:	:	:	:	:					
I	101.2	99.7	126.3	117.9	123.8	115.3	122.4	121.0	107.9					-1.6	-10.8
NL	:	:	:	:	:	:	:	:	:						
B	105.3	108.4	116.9	111.0	106.2	107.3	109.6	107.7	104.0					-1.0	-3.4
L	86.8	86.4	96.4	90.5	90.1	97.6	94.9	87.3	87.8	86.4				-7.5	-1.6
UK	92.3	85.9	79.8	88.2	86.8	83.6	83.6	82.7	82.3					-3.9	-0.4
IRL															
DK	114.4	118.0	104.6	118.3	127.0	120.2	123.7	121.5	108.8	111.8				-7.8	2.8

NACE : 33

HERST.V.BUEROMASCHINEN UND EDV-ANLAGEN

OFFICE AND DATA PROCESSING INDUSTRY

CONSTR. MACHINES DE BUREAU, INFORMATIQUE

EUR9	PRO ARBEITSTAG			PER WORKING DAY									PAR JOUR OUVRABLE		
	-	-	-	-	-	-	-	-	-	-	-	-	-	-	-
D	136.7	150.1	163.3	151.4	131.4	192.6	166.0	170.4	164.0	187.1	139.0	174.7	183.3	6.8	-4.8
F															
I	125.6	176.7	238.9	162.4	213.9	250.2	202.9	274.3	215.8	266.9	168.5	201.8		14.4	-5.6
NL															
B															
L															
UK	115.3	134.9	193.4	150.1	187.6	253.3	270.5	155.0	185.8	247.6	151.0	198.3		14.7	5.7
IRL															
DK	152.6	200.6	215.8	115.0	193.0	228.0	260.0	203.0	170.0	151.0	153.0	118.0	157.0	3.6	-31.1

SAISONBEREINIGT

SEASONALLY ADJUSTED

DESAISONNALISE

EUR9	SAISONBEREINIGT			SEASONALLY ADJUSTED									DESAISONNALISE		
	:	:	:	:	:	:	:	:	:	:	:	:	:	:	:
D	171.4	157.0	178.0	172.7	166.2	167.0	185.0	163.9	197.2	170.4				2.6	-13.6
F															
I	244.1	224.9	237.3	221.9	269.7	220.7	260.0	250.8	215.2					1.9	-14.2
NL															
B															
L															
UK	179.0	194.2	193.6	219.1	184.2	198.3	218.6	186.9	202.0					1.0	8.0
IRL															
DK	181.0	220.9	168.8	172.0	218.9	241.3	185.7	225.6	161.6	113.6				-22.4	-29.7

PRODUKTIONSINDIZES

INDICES OF PRODUCTION

INDICES DE PRODUCTION

1975 = 100

1977	1978	1979	1979			1980						A	B
			JUL	AUG	SEP	MAR	APR	MAI	JUN	JUL	AUG		

NACE : 34

ELEKTROTECHNIK

ELECTRICAL ENGINEERING

CONSTR. ELECTRIQUE ET ELECTRONIQUE

	PRO ARBEITSTAG			PER WORKING DAY						PAR JOUR OUVRABLE					
	1977	1978	1979	1979	1979	1979	1980	1980	1980	1980	1980	1980	1980	1980	
EUR9	111.3	113.8	115.6	100.4	84.1	124.7	129.9	125.8	120.1	127.0	102.7	84.6	1	4.6	0.6
D	116.4	117.8	119.7	106.9	86.0	130.2	132.4	133.0	129.0	131.5	108.7	91.5	118.1	4.3	-9.3
F	113.4	116.9	119.9	91.2	91.2	127.9	124.7	129.3	117.1	139.0	92.1	92.1	116.7	2.2	-8.8
I	111.0	113.3	115.0	114.9	46.5	126.3	136.8	144.3	134.6	135.7	130.8	40.0	1	12.4	-14.1
NL	108.8	113.1	117.8	99.0	98.0	130.0	130.0	127.0	120.0	128.0	100.0	101.0	1	1.8	3.1
B	107.3	113.3	111.0	75.9	114.6	125.2	120.9	111.0	111.3	114.9	75.2	109.5	1	2.1	-4.5
L	-	-	-	-	-	-	-	-	-	-	-	-	1	-	-
UK	100.9	103.3	102.2	94.4	83.6	95.6	124.4	97.3	96.6	100.4	91.0	81.6	1	-1.5	-2.4
IRL	-	-	-	-	-	-	-	-	-	-	-	-	1	-	-
DK	117.5	120.8	136.2	76.0	144.0	239.0	150.0	126.0	125.0	145.0	73.0	127.0	140.0	0.3	-41.4

SAISONBEREINIGT

SEASONALLY ADJUSTED

DESAISONNALISE

	SAISONBEREINIGT			SEASONALLY ADJUSTED						DESAISONNALISE			
	1977	1978	1979	1979	1979	1979	1980	1980	1980	1980	1980	1980	1980
EUR9	117.5	112.7	118.0	123.7	122.6	118.9	121.0	120.9	115.8	1	-2.1	-4.2	
D	125.2	111.6	122.3	129.6	127.7	125.7	125.5	127.0	121.0	113.3	-4.6	-6.3	
F	119.3	120.7	123.2	120.5	124.8	117.2	126.8	121.0	123.3	113.4	-3.0	-8.1	
I	113.7	113.8	115.3	130.0	139.0	126.9	129.7	132.6	114.1	1	-4.9	-14.0	
NL	121.8	120.0	120.8	125.3	115.6	121.3	120.3	121.3	122.2	1	0.5	0.7	
B	106.6	114.9	119.7	121.3	103.9	113.2	116.9	107.3	110.2	1	-1.2	2.8	
L	-	-	-	-	-	-	-	-	-	1	-	-	
UK	103.9	100.1	95.2	107.0	101.6	99.8	100.2	100.2	98.9	1	-3.0	-1.3	
IRL	-	-	-	-	-	-	-	-	-	1	-	-	
DK	127.5	135.9	198.1	143.4	143.7	135.3	134.0	133.3	121.7	111.6	-11.2	-8.3	

NACE : 35

BAU VON KRAFTWAHREN U. DAREN EINZELTEILEN

MOTOR VEHICLES, PARTS AND ACCESSORIES

CONSTR. AUTOMOBILES ET PIECES DETACHEES

	PRO ARBEITSTAG			PER WORKING DAY						PAR JOUR OUVRABLE					
	1977	1978	1979	1979	1979	1979	1980	1980	1980	1980	1980	1980	1980	1980	
EUR9	118.9	121.4	126.3	108.6	69.0	128.4	136.6	139.0	130.4	133.3	107.2	62.7	1	1.0	-9.1
D	122.1	125.1	134.7	106.2	96.7	138.6	141.4	145.9	141.6	140.0	102.3	91.6	122.4	-1.6	-11.6
F	130.1	132.7	139.3	130.5	48.2	154.0	153.6	153.6	136.6	143.1	114.2	42.4	137.6	-2.2	-10.6
I	109.2	117.7	119.3	104.4	35.0	131.6	148.3	154.0	142.9	146.5	137.8	22.5	1	15.0	-35.8
NL	-	-	-	1	1	1	1	1	1	1	1	1	1	1	1
B	128.0	126.2	139.8	89.3	128.7	163.2	134.7	153.4	130.4	159.5	85.3	111.3	1	6.1	-13.5
L	-	-	-	-	-	-	-	-	-	-	-	-	1	-	-
UK	107.2	103.7	99.3	94.2	62.4	70.8	97.1	92.7	90.8	92.7	84.1	60.7	67.6	-6.3	-4.5
IRL	-	-	-	-	-	-	-	-	-	-	-	-	1	-	-
DK	116.6	126.3	132.3	77.0	156.0	138.0	152.0	141.0	130.0	172.0	91.0	127.0	147.0	8.2	6.5

SAISONBEREINIGT

SEASONALLY ADJUSTED

DESAISONNALISE

	SAISONBEREINIGT			SEASONALLY ADJUSTED						DESAISONNALISE			
	1977	1978	1979	1979	1979	1979	1980	1980	1980	1980	1980	1980	1980
EUR9	123.7	122.9	123.8	125.4	128.9	119.9	124.9	123.4	118.3	1	-2.2	-4.1	
D	154.4	129.3	133.7	135.8	136.8	131.8	129.7	129.4	126.4	119.5	-5.8	-5.4	
F	139.0	144.7	146.5	142.1	143.0	128.1	133.7	129.0	133.0	126.1	-4.4	-5.2	
I	101.4	109.8	116.6	135.9	145.2	130.5	140.8	138.5	110.4	1	-5.3	-20.3	
NL	1	1	1	1	1	1	1	1	1	1	1	1	
B	122.8	143.4	153.8	132.8	142.9	132.7	162.8	126.3	129.7	1	2.5	2.7	
L	-	-	-	-	-	-	-	-	-	1	-	-	
UK	108.3	87.6	81.6	81.0	85.6	79.4	88.6	95.5	86.4	79.5	3.1	-8.1	
IRL	-	-	-	-	-	-	-	-	-	1	-	-	
DK	128.6	155.3	128.0	140.7	139.8	121.1	145.8	144.4	128.9	138.2	1.2	7.2	

PRODUKTIONSINDIZES

INDICES OF PRODUCTION

INDICES DE PRODUCTION

1975 = 100

	1977			1978			1979			1980			A	B	
	JUL	AUG	SEP	JUL	AUG	SEP	MAR	APR	MAI	JUN	JUL	AUG			SEP
NACE : 36															
FAHRZEUGBAU (OHNE BAU VON KRAFTWAGEN)				MEANS OF TRANSPORT (EXCL. MOTOR VEHICLES)						CONSTRN. MAT. TRANSPORT (SAUF AUTOMOB.)					
PRO ARBEITSTAG				PER WORKING DAY						PAR JOUR OUVRABLE					
EUR9	95.7	89.4	87.0	81.6	72.6	89.8	93.8	96.9	92.4	93.4	86.9	73.1	:	1.9	0.7
D	94.6	80.7	84.2	74.7	68.3	87.5	95.7	96.6	98.5	94.2	75.0	73.7	86.0	6.4	-1.7
F	93.0	76.9	64.5	63.4	49.4	63.2	62.2	68.5	58.5	62.2	60.8	41.8	60.8	-11.5	-3.7
I	110.3	111.5	118.9	121.0	57.4	133.1	161.0	179.0	147.6	163.6	156.4	72.3	:	26.0	25.9
NL	97.3	92.0	87.8	76.0	96.0	91.0	90.0	91.0	:	:	:	:	:	-7.3	:
B	110.3	148.3	152.8	129.1	152.8	171.4	161.8	165.2	163.3	169.9	146.9	178.5	:	11.0	16.8
L	-	-	-	-	-	-	-	-	-	-	-	-	-	-	-
UK	92.1	92.3	91.3	87.7	89.3	91.7	90.8	87.9	92.3	87.5	88.7	89.4	93.7	-1.6	2.2
IRL	-	-	-	-	-	-	-	-	-	-	-	-	-	-	-
DK	89.5	84.3	79.3	50.0	75.0	80.0	86.0	80.0	82.0	87.0	64.0	92.0	91.0	2.5	13.8

	SAISONHEREINIGT			SEASONALLY ADJUSTED						DESAISONNALISE					
	JUL	AUG	SEP	JUL	AUG	SEP	MAR	APR	MAI	JUN	JUL	AUG	SEP	A	B
EUR9				87.5	88.1	88.4	91.4	93.7	89.6	91.6	92.7	89.4	:	-0.4	-3.5
D				90.5	81.4	85.8	93.5	91.4	95.7	91.1	91.4	88.1	85.7	-4.7	-2.7
F				62.6	66.8	65.9	58.0	65.4	56.8	59.4	60.4	58.1	62.6	-0.3	7.6
I				115.5	116.9	125.2	154.0	169.2	142.1	158.5	154.2	150.8	:	-0.4	-2.2
NL				85.7	98.1	90.4	91.3	81.1	:	:	:	:	:	:	:
B				149.8	147.9	158.5	165.7	164.3	158.6	165.8	167.9	172.8	:	3.7	3.0
L				-	-	-	-	-	-	-	-	-	-	-	-
UK				92.2	92.2	90.1	89.6	90.2	90.2	90.5	92.2	91.2	91.3	1.4	0.1
IRL				-	-	-	-	-	-	-	-	-	-	-	-
DK				79.2	80.5	73.5	82.7	75.6	79.1	79.2	90.9	93.4	85.6	15.4	-8.3

NACE : 41/42

	NAHRUNGS- UND GENUSSMITTELGEWERBE			FOOD, DRINK AND TOBACCO INDUSTRY						IND. DE L'ALIMENTATION, BOISSONS, TABAC					
	JUL	AUG	SEP	JUL	AUG	SEP	MAR	APR	MAI	JUN	JUL	AUG	SEP	A	B
EUR9	104.0	107.8	111.1	105.5	102.3	115.3	111.1	112.8	112.6	114.6	106.8	107.1	:	2.6	4.7
D	103.3	106.9	110.8	104.4	101.1	111.3	110.9	117.0	120.9	118.5	105.9	108.4	108.3	3.5	-2.7
F	104.5	108.9	110.2	103.8	103.8	103.8	109.7	:	:	:	:	:	:	1.2	:
I	103.9	109.8	118.2	115.6	97.9	150.5	119.2	121.7	108.2	122.5	115.5	108.1	:	5.9	10.4
NL	105.6	109.1	112.2	101.0	105.0	112.0	107.0	113.0	114.0	115.0	:	:	:	0.7	1.8
B	102.5	105.2	108.2	88.5	111.9	113.5	107.3	110.3	113.6	114.2	90.5	112.5	:	2.1	0.5
L	96.8	94.0	97.4	114.3	94.1	94.9	103.2	105.8	109.7	122.8	106.9	103.3	100.8	5.5	6.2
UK	103.9	106.3	107.6	105.4	104.4	107.7	108.2	104.7	105.5	106.8	101.2	98.8	105.4	0.1	-2.1
IKL	108.8	116.6	122.0	129.6	124.5	128.2	:	:	:	:	:	:	:	4.6	:
DK	106.7	108.0	111.3	109.0	117.0	110.0	123.0	111.0	119.0	130.0	120.0	120.0	121.0	5.4	10.0

	SAISONHEREINIGT			SEASONALLY ADJUSTED						DESAISONNALISE					
	JUL	AUG	SEP	JUL	AUG	SEP	MAR	APR	MAI	JUN	JUL	AUG	SEP	A	B
EUR9				111.3	109.5	111.6	112.9	111.8	109.8	112.6	112.6	114.3	:	1.5	1.4
D				110.5	108.1	112.4	114.2	114.0	116.7	115.4	112.7	115.8	110.7	-2.0	-4.4
F				111.3	111.3	111.3	110.4	:	:	:	:	:	:	:	:
I				121.0	108.6	119.4	123.8	123.7	112.5	125.1	120.7	120.1	:	1.4	-0.4
NL				113.3	111.8	107.8	111.0	112.7	112.3	113.1	:	:	:	:	0.7
B				102.3	112.1	111.5	109.8	110.0	112.1	108.4	106.4	112.1	:	-1.5	5.4
L				96.4	89.2	97.0	106.6	103.9	96.2	105.6	93.0	99.9	103.5	-3.0	3.6
UK				107.4	107.7	107.5	108.4	107.1	104.9	105.4	104.2	103.1	105.4	-1.5	2.2
IKL				121.5	114.9	125.2	:	:	:	:	:	:	:	:	:
DK				111.0	110.0	110.0	120.3	115.3	112.8	117.1	121.9	114.2	121.0	3.4	5.9

PRODUKTIONSINDIZES

INDICES OF PRODUCTION

INDICES DE PRODUCTION

1975 = 100

	1977	1978	1979	1979			1980						A	H	
				JUL	AUG	SEP	MAR	APR	MAI	JUN	JUL	AUG			SEP
NACE : 411/423															
NAHRUNGSMITTELGEMERDE				FOOD, EDIBLE OILS AND FATS						IND. DES COMPS GRAS ET ALIMENTS					
PRO ARBEITSTAG				PER WORKING DAY						PAR JOUR OUVRABLE					
EUR9	103.8	107.6	111.2	102.6	102.6	117.1	110.0	:	:	:	:	:	:	3.5	
D	102.6	106.2	111.0	101.7	97.2	110.9	112.1	115.9	121.2	115.8	105.6	106.0	107.8	4.8	-2.8
F	102.6	106.9	109.0	103.1	103.1	103.1	110.1	:	:	:	:	:	:	1.4	
I	105.0	111.4	119.4	109.6	107.6	167.6	111.8	111.8	103.7	116.1	110.6	115.7	:	4.6	7.5
NL	104.3	108.5	110.6	98.0	102.0	111.0	106.0	110.0	111.0	112.0	:	:	:	0.2	3.7
B	104.7	108.6	112.0	88.4	115.9	120.5	105.2	107.5	112.0	112.8	91.4	117.8	:	2.5	1.6
L	105.9	108.3	109.1	113.5	115.4	114.9	111.4	119.5	129.7	126.8	112.1	123.6	121.9	3.9	6.1
UK	105.1	106.3	107.3	101.9	101.2	107.7	104.8	104.1	104.5	105.0	98.7	96.9	103.6	0.2	-3.8
IRL	112.7	120.0	125.3	133.2	129.2	133.7	:	:	:	:	:	:	:	4.3	
DK	109.8	112.3	117.1	112.0	122.0	120.0	130.0	116.0	125.0	137.0	123.0	128.0	128.0	5.9	6.7

	SAISONNEREINIGT			SEASONALLY ADJUSTED						DESAISONNALISE					
	EUR9			111.9	110.0	112.7	112.7	:	:	:	:	:	:		
D				112.2	108.1	114.7	115.1	113.3	119.0	115.9	116.0	117.3	112.7	-0.9	-3.9
F				109.9	109.9	109.9	109.5	:	:	:	:	:	:		
I				122.8	115.0	121.8	121.1	121.1	112.7	124.7	122.0	122.6	:	4.1	0.5
NL				112.1	111.2	105.3	110.8	110.6	111.4	113.5	:	:	:		1.9
B				107.3	115.4	115.6	112.1	112.1	115.8	114.3	111.8	116.8	:	0.9	4.5
L				105.2	110.1	115.4	114.8	116.1	113.6	119.4	104.9	119.0	120.3	-1.4	1.1
UK				106.8	106.7	108.0	105.1	106.8	104.5	105.9	104.4	103.3	104.2	-1.7	0.9
IRL				124.6	123.8	129.3	:	:	:	:	:	:	:		
DK				118.2	118.5	117.3	126.2	121.1	118.5	123.7	128.6	124.3	125.6	4.2	1.0

NACE : 424/426

	HERSTELLUNG VON GETRANKEN			DRINK INDUSTRIES						INDUSTRIE DES BOISSONS					
	EUR9			107.6	112.4	116.2	116.8	113.0	111.2	117.0	:	:	:	:	5.0
D	103.1	105.6	107.1	103.0	102.0	109.1	101.4	113.5	124.2	122.9	100.8	110.2	103.1	0.8	-5.5
F	126.2	136.4	136.5	129.8	129.8	129.8	131.7	:	:	:	:	:	:	3.6	
I	98.6	106.3	121.5	148.2	111.7	100.6	147.3	133.6	124.0	148.3	137.9	90.8	:	5.8	-18.7
NL	111.2	113.4	119.6	126.0	123.0	111.0	109.0	122.0	133.0	134.0	121.0	:	:	0.6	-4.0
B	103.1	100.0	101.5	103.9	102.7	98.7	110.7	116.0	119.4	116.6	102.0	102.7	:	1.1	-
L	91.5	85.7	90.6	114.8	93.0	83.3	98.4	97.6	98.0	120.7	105.8	91.4	88.4	6.6	6.1
UK	101.8	106.4	109.0	116.8	114.4	109.4	113.2	109.0	110.8	115.3	108.2	103.4	111.8	-0.3	2.2
IRL	101.1	110.1	115.8	122.8	115.5	117.5	:	:	:	:	:	:	:	5.2	
DK	95.7	94.2	91.9	94.0	102.0	74.0	100.0	97.0	101.0	110.0	111.0	94.0	97.0	4.7	31.1

	SAISONNEREINIGT			SEASONALLY ADJUSTED						DESAISONNALISE					
	EUR9			115.4	116.4	117.6	121.0	:	:	:	:	:	:		
D				102.4	102.8	111.7	104.2	108.8	111.4	108.2	102.6	110.9	106.2	-2.6	-4.3
F				141.9	141.9	141.9	141.2	:	:	:	:	:	:		
I				123.0	124.3	118.7	135.2	119.6	110.3	127.9	116.9	106.7	:	-3.7	-8.7
NL				116.9	111.9	116.5	113.3	121.0	117.9	112.7	114.8	:	:	-2.5	1.8
B				95.4	105.9	104.2	105.1	104.3	106.2	97.4	95.9	104.3	:	-5.7	8.7
L				92.2	77.4	86.7	112.4	97.0	86.0	97.9	86.1	88.8	93.7	-4.4	5.5
UK				109.6	110.6	106.3	116.1	109.5	106.6	104.8	103.0	101.6	108.9	-2.3	7.2
IRL				115.7	109.4	117.6	:	:	:	:	:	:	:		
DK				95.8	84.5	84.3	102.2	97.8	94.5	97.7	99.4	83.2	106.5	-0.3	27.9

PRODUKTIONSINDIZES

INDICES OF PRODUCTION

INDICES DE PRODUCTION

1975 = 100

	1977	1978	1979	1979			1980						A	B		
				JUL	AUG	SEP	MAR	APR	MAI	JUN	JUL	AUG			SEP	
NACE : 429																
TABAKVERARBEITUNG				TOBACCO INDUSTRIES											INDUSTRIE DU TABAC	
	PRO ARBEITSTAG			PER WORKING DAY									PAR JOUR OUVRABLE			
EUR9	113.0	113.0	114.2	102.8	98.4	114.6	125.5	120.8	114.6	120.6	:	:	:	2.1	0.3	
D	99.2	106.5	110.3	110.6	107.9	110.5	114.0	120.1	111.0	116.9	108.7	109.1	112.0	2.7	1.3	
F	94.7	93.6	88.4	68.6	35.4	98.0	98.4	94.1	85.1	92.2	62.0	35.2	90.4	-6.3	-7.7	
I	119.5	106.6	99.4	86.2	62.5	91.1	111.9	115.7	110.8	107.3	90.7	58.4	:	5.5	-6.7	
NL	113.0	110.3	121.3	95.0	109.0	128.0	126.0	129.0	119.0	126.0	84.0	106.0	:	2.6	-2.8	
B	98.5	94.2	98.4	41.0	107.7	104.5	108.1	108.2	101.3	106.2	43.4	100.5	:	1.7	-6.7	
L	-	-	-	:	:	:	:	:	:	:	:	:	:	:	:	
UK	99.1	106.1	106.3	102.7	102.7	102.7	127.4	96.1	96.1	96.1	:	:	:	1.0	-3.3	
IRL	-	-	-	-	-	-	-	-	-	-	-	-	-	-	-	
DK	104.2	102.5	104.1	109.0	104.0	124.0	118.0	99.0	102.0	109.0	113.0	103.0	119.0	-0.6	-4.0	
NACE : 43																
TEXTILINDUSTRIE				TEXTILE INDUSTRY											INDUSTRIE TEXTILE	
	PRO ARBEITSTAG			PER WORKING DAY									PAR JOUR OUVRABLE			
EUR9	106.9	103.8	109.2	94.5	66.2	118.7	120.3	119.5	114.0	116.2	91.9	56.6	:	1.5	-14.5	
D	106.6	105.3	109.1	89.6	73.5	119.3	122.7	120.3	116.2	115.7	84.0	70.1	106.7	1.9	-10.5	
F	105.6	102.6	105.1	87.0	44.0	116.9	114.5	113.6	107.1	109.9	78.0	42.1	108.5	-3.0	-7.2	
I	112.3	107.0	121.1	119.9	52.5	132.3	141.8	147.9	142.2	140.3	128.9	37.1	:	8.3	-29.4	
NL	99.1	93.7	95.2	58.0	85.0	94.0	108.0	109.0	107.0	106.0	:	:	:	4.7	2.9	
B	98.4	94.3	102.0	66.0	85.0	112.2	117.7	115.4	102.1	117.2	61.0	88.2	:	6.5	3.8	
L	-	-	-	-	-	-	-	-	-	-	-	-	-	-	-	
UK	102.5	99.6	95.9	85.1	87.6	100.3	90.3	81.7	78.2	85.8	70.6	74.1	79.7	-12.6	-20.5	
IRL	129.6	149.9	156.8	136.2	118.5	165.5	:	:	:	:	:	:	:	4.6	4.6	
DK	102.8	104.0	107.8	58.0	129.0	118.0	122.0	107.0	99.0	110.0	56.0	113.0	123.0	1.8	4.2	
NACE : 43																
TEXTILINDUSTRIE				TEXTILE INDUSTRY											INDUSTRIE TEXTILE	
	PRO ARBEITSTAG			PER WORKING DAY									PAR JOUR OUVRABLE			
EUR9	106.9	103.8	109.2	94.5	66.2	118.7	120.3	119.5	114.0	116.2	91.9	56.6	:	1.5	-14.5	
D	106.6	105.3	109.1	89.6	73.5	119.3	122.7	120.3	116.2	115.7	84.0	70.1	106.7	1.9	-10.5	
F	105.6	102.6	105.1	87.0	44.0	116.9	114.5	113.6	107.1	109.9	78.0	42.1	108.5	-3.0	-7.2	
I	112.3	107.0	121.1	119.9	52.5	132.3	141.8	147.9	142.2	140.3	128.9	37.1	:	8.3	-29.4	
NL	99.1	93.7	95.2	58.0	85.0	94.0	108.0	109.0	107.0	106.0	:	:	:	4.7	2.9	
B	98.4	94.3	102.0	66.0	85.0	112.2	117.7	115.4	102.1	117.2	61.0	88.2	:	6.5	3.8	
L	-	-	-	-	-	-	-	-	-	-	-	-	-	-	-	
UK	102.5	99.6	95.9	85.1	87.6	100.3	90.3	81.7	78.2	85.8	70.6	74.1	79.7	-12.6	-20.5	
IRL	129.6	149.9	156.8	136.2	118.5	165.5	:	:	:	:	:	:	:	4.6	4.6	
DK	102.8	104.0	107.8	58.0	129.0	118.0	122.0	107.0	99.0	110.0	56.0	113.0	123.0	1.8	4.2	
NACE : 43																
TEXTILINDUSTRIE				TEXTILE INDUSTRY											INDUSTRIE TEXTILE	
	PRO ARBEITSTAG			PER WORKING DAY									PAR JOUR OUVRABLE			
EUR9	106.9	103.8	109.2	94.5	66.2	118.7	120.3	119.5	114.0	116.2	91.9	56.6	:	1.5	-14.5	
D	106.6	105.3	109.1	89.6	73.5	119.3	122.7	120.3	116.2	115.7	84.0	70.1	106.7	1.9	-10.5	
F	105.6	102.6	105.1	87.0	44.0	116.9	114.5	113.6	107.1	109.9	78.0	42.1	108.5	-3.0	-7.2	
I	112.3	107.0	121.1	119.9	52.5	132.3	141.8	147.9	142.2	140.3	128.9	37.1	:	8.3	-29.4	
NL	99.1	93.7	95.2	58.0	85.0	94.0	108.0	109.0	107.0	106.0	:	:	:	4.7	2.9	
B	98.4	94.3	102.0	66.0	85.0	112.2	117.7	115.4	102.1	117.2	61.0	88.2	:	6.5	3.8	
L	-	-	-	-	-	-	-	-	-	-	-	-	-	-	-	
UK	102.5	99.6	95.9	85.1	87.6	100.3	90.3	81.7	78.2	85.8	70.6	74.1	79.7	-12.6	-20.5	
IRL	129.6	149.9	156.8	136.2	118.5	165.5	:	:	:	:	:	:	:	4.6	4.6	
DK	102.8	104.0	107.8	58.0	129.0	118.0	122.0	107.0	99.0	110.0	56.0	113.0	123.0	1.8	4.2	
NACE : 43																
TEXTILINDUSTRIE				TEXTILE INDUSTRY											INDUSTRIE TEXTILE	
	PRO ARBEITSTAG			PER WORKING DAY									PAR JOUR OUVRABLE			
EUR9	106.9	103.8	109.2	94.5	66.2	118.7	120.3	119.5	114.0	116.2	91.9	56.6	:	1.5	-14.5	
D	106.6	105.3	109.1	89.6	73.5	119.3	122.7	120.3	116.2	115.7	84.0	70.1	106.7	1.9	-10.5	
F	105.6	102.6	105.1	87.0	44.0	116.9	114.5	113.6	107.1	109.9	78.0	42.1	108.5	-3.0	-7.2	
I	112.3	107.0	121.1	119.9	52.5	132.3	141.8	147.9	142.2	140.3	128.9	37.1	:	8.3	-29.4	
NL	99.1	93.7	95.2	58.0	85.0	94.0	108.0	109.0	107.0	106.0	:	:	:	4.7	2.9	
B	98.4	94.3	102.0	66.0	85.0	112.2	117.7	115.4	102.1	117.2	61.0	88.2	:	6.5	3.8	
L	-	-	-	-	-	-	-	-	-	-	-	-	-	-	-	
UK	102.5	99.6	95.9	85.1	87.6	100.3	90.3	81.7	78.2	85.8	70.6	74.1	79.7	-12.6	-20.5	
IRL	129.6	149.9	156.8	136.2	118.5	165.5	:	:	:	:	:	:	:	4.6	4.6	
DK	102.8	104.0	107.8	58.0	129.0	118.0	122.0	107.0	99.0	110.0	56.0	113.0	123.0	1.8	4.2	
NACE : 43																
TEXTILINDUSTRIE				TEXTILE INDUSTRY											INDUSTRIE TEXTILE	
	PRO ARBEITSTAG			PER WORKING DAY									PAR JOUR OUVRABLE			
EUR9	106.9	103.8	109.2	94.5	66.2	118.7	120.3	119.5	114.0	116.2	91.9	56.6	:	1.5	-14.5	
D	106.6	105.3	109.1	89.6	73.5	119.3	122.7	120.3	116.2	115.7	84.0	70.1	106.7	1.9	-10.5	
F	105.6	102.6	105.1	87.0	44.0	116.9	114.5	113.6	107.1	109.9	78.0	42.1	108.5	-3.0	-7.2	
I	112.3	107.0	121.1	119.9	52.5	132.3	141.8	147.9	142.2	140.3	128.9	37.1	:	8.3	-29.4	
NL	99.1	93.7	95.2	58.0	85.0	94.0	108.0	109.0	107.0	106.0	:	:	:	4.7	2.9	
B	98.4	94.3	102.0	66.0	85.0	112.2	117.7	115.4	102.1	117.2	61.0	88.2	:	6.5	3.8	
L	-	-	-	-	-	-	-	-	-	-	-	-	-	-	-	
UK	102.5	99.6	95.9	85.1	87.6	100.3	90.3	81.7	78.2	85.8	70.6	74.1	79.7	-12.6	-20.5	
IRL	129.6	149.9	156.8	136.2	118.5	165.5	:	:	:	:	:	:	:	4.6	4.6	
DK	102.8	104.0	107.8	58.0	129.0	118.0	122.0	107.0	99.0	110.0	56.0	113.0	123.0	1.8	4.2	
NACE : 43																
TEXTILINDUSTRIE				TEXTILE INDUSTRY											INDUSTRIE TEXTILE	
	PRO ARBEITSTAG			PER WORKING DAY									PAR JOUR OUVRABLE			
EUR9	106.9	103.8	109.2	94.5	66.2	118.7	120.3	119.5	114.0	116.2	91.9	56.6	:	1.5	-14.5	
D	106.6	105.3	109.1	89.6	73.5	119.3	122.7	120.3	116.2	115.7	84.0	70.1	106.7	1.9	-10.5	
F	105.6	102.6	105.1	87.0	44.0	116.9	114.5	113.6	107.1	109.9	78.0	42.1	108.5	-3.0	-7.2	
I	112.3	107.0	121.1	119.9	52.5	132.3	141.8	147.9	142.2	140.3	128.9	37.1	:	8.3	-29.4	
NL	99.1	93.7	95.2	58.0	85.0	94.0	108.0	109.0	107.0	106.0	:	:	:	4.7	2.9	
B	98.4	94.3	102.0	66.0	85.0	112.2	117.7	115.4	102.1	117.2	61.0	88.2	:	6.5	3.8	
L	-	-	-	-	-	-	-	-	-	-	-	-	-	-	-	
UK	102.5	99.6	95.9	85.1	87.6	100.3	90.3	81.7	78.2	85.8	70.6	74.1	79.7	-12.6	-20.5	
IRL	129.6	149.9	156.8	136.2	118.5	165.5	:	:	:	:	:	:	:	4.6	4.6	
DK	102.8	104.0	107.8	58.0	129.0	118.0	122.0	107.0	99.0	110.0	56.0	113.0	123.0	1.8	4.2	
NACE : 43																
TEXTILINDUSTRIE				TEXTILE INDUSTRY											INDUSTRIE TEXTILE	
	PRO ARBEITSTAG			PER WORKING DAY									PAR			

PRODUKTIONSINDIZES

INDICES OF PRODUCTION

INDICES DE PRODUCTION

1975 = 100

	1977	1978	1979	1979			1980						A	B	
				JUL	AUG	SEP	MAR	APR	MAI	JUN	JUL	AUG			SEP
NACE : 44															
LEDERINDUSTRIE				LEATHER INDUSTRY						INDUSTRIE DU CUIR					
	PRO ARBEITSTAG			PER WORKING DAY						PAR JOUR OUVRABLE					
EUR9	102.5	99.3	99.1	91.3	56.5	103.0	98.7	93.9	90.0	90.7	77.1	43.3	:	-8.6	-23.3
D	103.4	101.7	102.4	88.9	82.2	111.2	107.2	98.4	94.0	93.8	77.9	72.6	:	-3.3	-11.7
F	99.1	92.6	75.6	55.4	36.3	79.1	42.1	66.6	63.7	65.6	44.7	24.6	76.8	-16.4	-2.9
I	106.4	105.9	118.1	126.9	35.3	125.5	114.0	120.4	111.8	115.6	109.7	18.0	:	-4.5	-48.9
ML	105.6	86.9	88.2	50.0	81.0	106.0	84.0	83.0	90.0	84.0	32.0	91.0	:	-4.5	12.3
B	92.5	74.3	62.8	44.7	50.5	60.6	53.3	53.1	54.5	51.7	21.5	48.4	:	-16.3	-4.2
L	-	-	-	-	-	-	-	-	-	-	-	-	:	-	-
UK	99.3	96.6	91.6	42.6	82.6	82.6	40.1	71.4	71.4	71.4	66.0	66.0	66.0	-19.3	-20.1
IRL	-	-	-	-	-	-	-	-	-	-	-	-	-	-	-
DK	91.1	81.7	75.5	32.0	75.0	61.0	78.0	65.0	63.0	70.0	55.0	67.0	72.0	-10.6	-11.1

	SAISONHENEINIGT			SEASONALLY ADJUSTED						DESAISONNALISE			
	EUR9	D	F	I	ML	B	L	UK	IRL	DK	:	A	B
EUR9		102.4	100.7	99.6	92.2	86.8	85.5	84.8	85.5	84.1	:	-3.7	0.7
D		104.9	102.6	105.1	102.5	93.7	97.5	95.5	94.5	92.9	:	-3.7	-1.5
F		74.1	90.4	72.5	73.9	63.8	58.9	56.3	60.6	64.0	67.9	7.5	6.2
I		120.8	113.4	115.6	105.4	110.3	101.5	104.1	100.5	96.9	:	-4.8	-3.6
ML		47.4	85.2	95.3	79.7	73.9	83.2	78.8	79.3	42.5	:	5.8	16.7
B		73.1	56.2	42.6	53.8	48.6	49.1	42.9	48.9	53.4	:	-4.1	9.3
L		-	-	-	-	-	-	-	-	-	:	-	-
UK		90.4	90.4	90.4	78.5	70.7	70.7	70.7	71.1	71.1	71.1	0.7	-
IRL		-	-	-	-	-	-	-	-	-	-	-	-
DK		77.8	70.4	71.4	68.1	65.7	61.3	61.4	79.3	62.2	62.9	8.5	1.1

NACE : 45

SCHUH- UND BEKLEIDUNGSBREMME

FOOTWEAR AND CLOTHING INDUSTRY

INDUSTRIE DE LA CHAUSSURE ET DE L'HABILLEMENT

	PRO ARBEITSTAG			PER WORKING DAY						PAR JOUR OUVRABLE					
	EUR9	D	F	I	ML	B	L	UK	IRL	DK	:	A	B		
EUR9		-	-	-	-	-	-	-	-	-	:	-	-		
D	96.1	42.9	92.0	79.8	40.1	108.5	105.1	96.5	81.9	77.0	77.1	76.3	98.0	-3.2	-9.8
F	-	-	-	-	-	-	-	-	-	-	-	-	-	-	-
I	113.4	103.4	116.6	114.5	49.2	126.1	145.4	134.2	123.7	121.3	117.2	35.8	:	6.5	-27.2
ML	89.8	85.2	82.2	53.0	80.0	90.0	86.0	80.0	75.0	77.0	45.0	70.0	:	-6.8	-12.5
B	87.6	86.6	86.7	50.4	89.2	109.1	120.6	106.6	81.7	86.1	53.7	96.9	:	5.4	8.6
L	80.7	69.7	84.3	75.2	55.1	44.9	84.5	74.2	83.8	89.5	119.8	49.0	79.2	-0.2	-16.3
UK	102.2	104.8	106.6	101.8	96.1	124.2	103.8	91.3	84.3	89.2	95.5	89.6	98.2	-8.3	-20.9
IRL	99.5	99.2	97.0	96.0	65.8	101.9	-	-	-	-	-	-	-	-2.2	-
DK	103.2	99.4	103.5	52.0	166.0	147.0	132.0	91.0	69.0	75.0	61.0	155.0	167.0	4.9	13.6

	SAISONHENEINIGT			SEASONALLY ADJUSTED						DESAISONNALISE			
	EUR9	D	F	I	ML	B	L	UK	IRL	DK	:	A	B
EUR9		-	-	-	-	-	-	-	-	-	:	-	-
D		94.3	93.2	95.5	93.4	88.7	88.6	90.2	90.5	89.0	85.0	-1.2	-4.5
F		-	-	-	-	-	-	-	-	-	-	-	-
I		112.3	113.6	117.4	125.6	125.1	117.9	119.9	115.8	104.1	:	-7.8	-10.1
ML		90.5	79.5	76.8	79.1	74.0	75.8	76.3	77.1	70.7	:	-2.1	-8.4
B		39.0	89.0	87.7	99.7	94.7	88.2	88.6	91.8	93.8	:	-3.0	2.2
L		94.5	72.6	78.4	78.9	68.7	74.6	90.6	125.3	70.5	65.5	11.7	-7.0
UK		104.3	105.2	112.3	97.0	95.0	92.9	92.5	96.5	97.1	86.1	-0.2	-11.3
IRL		99.3	100.2	96.0	-	-	-	-	-	-	-	-	-
DK		110.8	109.9	96.1	108.4	100.4	98.4	102.8	116.0	98.5	114.2	9.0	15.4

PRODUKTIONSINDIZES

INDICES OF PRODUCTION

INDICES DE PRODUCTION

1975 = 100

	1977			1978			1979			1980			A		B	
	JUL	AUG	SEP	JUL	AUG	SEP	MAR	APR	MAI	JUN	JUL	AUG	SEP			
NACE : 451+452																
HERSTELLUNG VON SCHUHEN				FOOTWEAR MANUFACTURE								INDUSTRIE DE LA CHAUSSURE				
	PRO ARBEITSTAG			PER WORKING DAY									PAR JOUR OUVRABLE			
EUR9	101.7	98.0	101.1	90.4	63.1	108.5	115.0	108.6	95.4	98.0	85.9	57.8	:	-0.8	-8.4	
D	100.1	96.1	96.6	77.7	81.6	109.1	107.9	104.2	98.8	84.7	71.6	81.1	100.7	-0.0	-7.6	
F	98.9	93.2	92.7	68.7	45.3	98.5	100.0	102.1	88.7	94.5	65.1	46.9	93.3	-4.6	-5.3	
I	104.8	100.7	110.5	117.5	39.6	108.0	138.4	134.4	111.5	114.8	114.6	26.4	:	3.0	-33.4	
NL	96.2	97.3	95.4	55.0	92.0	107.0	105.0	103.0	103.0	102.0	47.0	104.0	:	4.0	13.0	
B	64.6	56.3	57.8	23.8	58.3	65.9	67.2	57.1	61.5	64.3	33.2	62.4	:	15.8	7.0	
L	-	-	-	-	-	-	-	-	-	-	-	-	:	-	-	
UK	104.1	103.4	101.3	92.9	95.6	120.9	102.1	75.7	69.4	85.4	84.0	89.6	102.5	-9.9	-15.2	
IRL	-	-	-	-	-	-	-	-	-	-	-	-	:	-	-	
DK	101.0	98.4	111.4	49.0	162.0	139.0	114.0	123.0	118.0	113.0	57.0	148.0	159.0	8.7	14.4	

	SAISONBEREINIGT			SEASONALLY ADJUSTED						DESAISONNALISE					
	JUL	AUG	SEP	JUL	AUG	SEP	MAR	APR	MAI	JUN	JUL	AUG	SEP		
EUR9	100.1	99.7	102.2	99.3	102.6	97.0	101.4	96.1	94.6	:	-2.3	-1.6			
D	95.9	88.1	98.9	96.0	97.5	101.5	103.8	91.5	90.0	91.3	-9.9	1.5			
F	88.9	99.9	91.1	85.7	90.3	84.2	86.0	85.0	97.4	86.2	3.1	-11.5			
I	110.3	105.6	110.1	113.6	120.7	109.8	118.0	108.9	96.4	:	-6.0	-11.5			
NL	113.0	88.4	96.0	97.2	96.6	104.8	98.0	102.5	101.6	:	1.2	-0.8			
B	54.8	53.7	56.9	62.1	59.8	62.1	59.9	67.9	60.1	:	2.1	-11.5			
L	-	-	-	-	-	-	-	-	-	:	-	-			
UK	99.0	101.4	104.4	91.5	87.0	82.3	88.6	90.0	85.3	85.3	4.0	-8.3			
IRL	-	-	-	-	-	-	-	-	-	:	-	-			
DK	104.8	120.6	111.1	106.4	126.6	125.9	115.0	115.8	106.6	128.3	-4.6	20.3			

NACE : 453/4/6

	BEKLEIDUNGSGEWERBE			CLOTHING INDUSTRY						INDUSTRIE DE L'HABILLEMENT					
	PRO ARBEITSTAG			PER WORKING DAY						PAR JOUR OUVRABLE					
EUR9	103.6	99.4	104.5	92.5	80.7	122.6	118.7	107.8	96.3	94.4	92.7	73.2	:	0.5	-9.3
D	95.9	92.9	92.7	80.7	80.4	109.1	105.2	95.7	79.1	75.9	78.7	75.8	98.0	-3.8	-10.3
F	-	-	-	:	:	:	:	:	:	:	:	:	:	:	:
I	119.2	105.3	120.7	112.4	55.7	138.3	150.2	140.8	132.0	125.7	119.0	42.2	:	8.6	-24.3
NL	84.5	82.1	78.8	52.0	77.0	85.0	82.0	74.0	68.0	71.0	45.0	62.0	:	-10.0	-19.5
B	90.3	90.3	89.5	53.5	92.1	113.8	110.3	95.3	85.8	89.3	56.6	101.4	:	-1.0	10.1
L	80.7	69.7	84.3	75.2	55.1	94.9	84.5	74.2	83.8	89.5	119.8	49.0	79.2	-0.2	-16.5
UK	101.7	105.2	108.1	104.3	96.2	125.2	104.3	95.7	88.4	90.2	98.8	89.6	97.0	-7.9	-22.5
IRL	-	-	-	-	-	-	-	-	-	-	-	-	:	-	-
DK	104.5	99.7	101.9	52.0	166.0	148.0	135.0	85.0	61.0	68.0	61.0	156.0	168.0	4.3	13.5

	SAISONBEREINIGT			SEASONALLY ADJUSTED						DESAISONNALISE					
	JUL	AUG	SEP	JUL	AUG	SEP	MAR	APR	MAI	JUN	JUL	AUG	SEP		
EUR9	103.3	104.3	107.4	107.5	101.7	100.3	100.6	103.1	97.4	:	-2.7	-5.5			
D	94.5	94.8	95.4	93.6	87.7	86.5	88.6	90.7	89.5	84.3	0.6	-5.7			
F	:	:	:	:	:	:	:	:	:	:	:	:			
I	113.4	119.0	123.4	135.9	128.0	125.2	123.2	122.0	109.3	:	-8.9	-10.4			
NL	83.5	77.0	72.4	75.3	68.2	68.4	70.7	71.3	63.6	:	-3.0	-10.8			
B	92.1	92.2	90.5	90.1	83.7	90.2	89.9	92.4	96.0	:	5.4	3.8			
L	94.5	72.6	78.4	78.9	68.7	74.6	90.6	125.3	70.5	65.5	11.7	-7.0			
UK	105.8	106.2	114.5	98.5	97.5	95.5	93.2	98.3	98.2	86.3	-1.2	-12.2			
IRL	-	-	-	-	-	-	-	-	-	:	-	-			
DK	111.5	107.9	92.2	106.7	95.5	93.9	100.2	115.7	97.4	111.5	12.1	14.5			

PRODUKTIONSINDIZES

INDICES OF PRODUCTION

INDICES DE PRODUCTION

1975 = 100

	1977	1978	1979	1979			1980						A	B	
				JUL	AUG	SEP	MAR	APR	MAI	JUN	JUL	AUG			SEP
NACE : 46															
BE- UND VERARBEITUNG VON HOLZ				TIMBER AND WOODEN FURNITURE IND.						IND. DU BOIS ET DU MEUBLE EN BOIS					
PRO ARBEITSTAG				PER WORKING DAY						PAR JOUR OUVRABLE					
EUR9				-	-	-	-	-	-	-	-	-	-	-	
D	112.3	112.9	115.9	95.5	90.5	125.7	124.8	125.9	126.2	125.7	94.1	95.9	:	3.3	6.0
F	-	-	-	:	:	:	:	:	:	:	:	:	:	:	:
I	134.3	134.0	143.1	151.0	55.3	150.4	167.7	173.7	161.6	168.9	166.2	50.8	:	7.3	-8.1
NL	105.1	94.4	86.6	61.0	77.0	91.0	96.0	104.0	107.0	102.0	67.0	82.0	:	5.8	6.5
B	112.9	109.3	108.2	59.2	94.9	124.1	126.9	125.8	118.8	137.6	67.3	113.6	:	11.2	19.7
L	116.5	115.7	126.0	132.9	79.1	122.5	156.2	167.4	163.5	154.1	142.7	65.1	131.8	15.3	7.6
UK	97.1	101.5	102.8	96.2	90.5	111.0	103.4	88.9	86.8	95.6	81.2	79.8	92.7	-8.4	-16.5
IRL	106.8	103.5	102.0	114.4	65.9	119.0	:	:	:	:	:	:	:	-1.5	:
DK	117.8	118.8	124.8	67.0	155.0	148.0	139.0	116.0	106.0	123.0	61.0	116.0	126.0	0.9	-13.5

	SAISONBEREINIGT			SEASONALLY ADJUSTED						DESAISONNALISE						
EUR9				-	-	-	-	-	-	-	-	-	-	-	-	
D				116.9	110.6	118.7	123.4	119.1	122.0	118.7	117.9	117.6	:	-2.8	-0.2	
F				:	:	:	:	:	:	:	:	:	:	:	:	
I				143.7	137.4	141.6	161.8	161.6	153.4	158.4	160.6	138.9	:	-3.9	-13.5	
NL				:	:	:	:	:	:	:	:	:	:	:	:	
B				102.4	109.5	112.6	116.6	117.2	116.3	124.2	114.1	128.1	:	4.6	12.2	
L				129.4	117.5	126.5	146.3	161.2	145.2	150.3	141.4	113.2	138.8	-13.9	22.6	
UK				105.3	102.4	105.6	98.7	91.3	90.6	93.3	90.1	91.0	86.8	-2.7	-4.6	
IRL				110.1	99.5	110.3	:	:	:	:	:	:	:	:	:	:
DK				130.6	134.5	126.8	132.3	125.5	113.2	112.5	126.0	99.3	107.2	-5.3	8.0	

NACE : 471+472

	PAPIER- U. PAPPEERZEUGUNG U. VERARBEITUNG			PULP, PAPER, PAPERBOARD IND.						IND. DU PAPIER ET DU CARTON					
	PRO ARBEITSTAG			PER WORKING DAY						PAR JOUR OUVRABLE					
EUR9	113.9	118.2	124.9	118.3	97.4	155.4	136.5	129.5	129.0	133.7	117.3	93.5	:	3.9	-4.0
D	116.7	120.6	126.9	120.4	116.9	136.9	139.2	133.4	138.0	143.2	121.8	120.7	:	7.2	3.3
F	112.8	117.8	123.3	134.4	51.9	131.1	155.3	127.5	126.7	132.7	136.0	54.4	124.2	2.0	-5.2
I	115.3	124.6	134.4	136.4	56.9	145.9	154.9	153.5	146.4	146.2	139.0	41.7	:	4.3	-26.8
NL	117.1	120.6	125.4	100.0	114.0	136.0	142.0	141.0	147.0	137.0	102.0	119.0	:	6.6	2.6
B	107.6	111.6	119.5	81.8	122.6	135.0	153.9	129.5	121.0	133.4	86.4	109.2	:	5.1	-10.9
L				-	-	-	-	-	-	-	-	-	-	-	-
UK	108.5	110.2	112.2	107.1	100.8	118.6	116.4	104.0	95.8	104.5	93.9	83.0	96.3	-6.6	-16.8
IRL	104.0	107.0	109.4	105.8	89.5	113.0	:	:	:	:	:	:	:	2.6	:
DK	110.8	115.2	124.3	65.0	139.0	132.0	146.0	122.0	130.0	137.0	67.0	135.0	135.0	4.1	2.3

	SAISONBEREINIGT			SEASONALLY ADJUSTED						DESAISONNALISE						
EUR9				126.0	123.6	126.1	130.9	125.9	125.4	127.1	126.0	122.1	:	-1.8	-3.1	
D				129.0	127.4	134.1	134.6	130.6	135.1	139.7	132.4	133.6	:	0.3	0.9	
F				129.3	121.7	120.7	125.5	123.3	123.0	118.7	129.4	123.9	116.3	116.3	1.2	-6.1
I				133.4	132.2	136.2	143.4	140.0	133.6	134.4	134.1	120.0	:	-6.8	-10.5	
NL				124.2	124.3	130.5	134.4	131.9	139.7	130.9	129.5	130.0	:	-3.8	0.3	
B				119.9	127.5	125.7	126.5	124.3	122.3	122.2	125.2	115.9	:	-2.6	-7.5	
L				-	-	-	-	-	-	-	-	-	-	-	-	
UK				113.5	113.9	115.2	109.5	106.1	96.2	101.5	100.6	96.4	93.4	-4.4	-3.1	
IRL				-	-	-	-	-	-	-	-	-	-	-	-	-
DK				127.5	128.1	120.8	137.6	130.6	131.7	125.9	129.8	122.5	124.8	124.8	-2.9	1.9

PRODUKTIONSINDIZES

INDICES OF PRODUCTION

INDICES DE PRODUCTION

1975 = 100

	1977	1978	1979	1979			1980						A	B	
				JUL	AUG	SEP	MAR	APR	MAI	JUN	JUL	AUG			SEP
NACE : 473															
DRUCKEREI	PRO ARBEITSTAG			PRINTING INDUSTRIES									IMPRIMERIE		
EUR9	111,5	115,7	122,3	113,5	104,4	127,4	126,9	127,5	125,7	127,9	114,1	106,0	:	4,0	1,5
D	114,9	115,9	125,7	111,9	109,3	130,0	131,0	134,0	135,5	133,9	115,4	118,0	:	5,9	7,9
F	114,3	121,1	127,9	122,0	78,9	133,2	144,8	136,1	136,9	136,9	130,8	78,5	132,4	3,5	-0,6
I	112,3	124,0	131,1	126,3	100,1	146,3	121,2	152,8	136,3	161,6	127,4	103,4	:	8,2	3,2
NL	115,1	120,3	122,8	105,0	114,0	131,0	130,0	137,0	137,0	125,0	106,0	114,0	:	4,8	-
B	-	-	-	-	-	-	-	-	-	-	-	-	:	-	-
L	112,6	110,3	109,2	100,0	92,5	109,8	112,8	111,0	111,9	110,0	98,9	104,1	102,7	0,7	-6,5
UK	105,8	108,6	112,5	111,2	111,5	112,6	115,1	103,1	102,9	102,7	106,5	106,7	105,7	-0,7	-6,1
IRL	-	-	-	-	-	-	-	-	-	-	-	-	-	-	-
DK	102,8	108,9	110,0	90,0	111,0	116,0	116,0	107,0	101,0	103,0	84,0	101,0	107,0	-2,8	-7,8

	SAISONBEREINIGT			SEASONALLY ADJUSTED						DESAISONNALISE		
	JUL	AUG	SEP	MAR	APR	MAI	JUN	JUL	AUG	SEP	A	B
EUR9	121,4	122,4	124,8	126,3	124,5	124,0	126,0	123,0	124,0	:	-0,5	0,8
D	124,8	122,5	127,9	131,5	129,9	132,9	132,6	127,5	132,9	:	-0,3	4,3
F	126,8	129,7	128,3	136,3	131,3	132,1	131,8	135,0	131,1	128,7	-0,1	-1,9
I	128,8	130,6	143,9	128,9	142,5	138,5	146,0	132,1	134,3	:	0,6	1,7
NL	124,3	123,4	125,5	127,0	131,4	130,8	127,5	127,0	124,6	:	-2,6	-1,9
B	:	:	:	:	:	:	:	:	:	:	:	:
L	105,2	105,5	111,5	114,9	109,7	112,9	111,1	105,7	116,7	106,5	-1,4	-8,7
UK	112,3	114,3	113,6	114,3	106,0	103,4	106,7	107,8	108,7	106,4	2,1	-2,1
IRL	-	-	-	-	-	-	-	-	-	-	-	-
DK	110,2	112,1	105,8	110,0	109,8	103,8	107,3	104,8	102,2	98,0	-5,0	-4,1

NACE : 481+482

VERARBEITUNG VON GUMMI

RUBBER MANUFACTURE

INDUSTRIE DU CAOUTCHOUC

	PRO ARBEITSTAG			PER WORKING DAY						PAR JOUR OUVRABLE					
	JUL	AUG	SEP	MAR	APR	MAI	JUN	JUL	AUG	SEP	A	B			
EUR9	-	-	-	-	-	-	-	-	-	-	-	-			
D	116,0	114,7	120,2	109,9	95,5	125,9	130,6	131,8	127,5	128,5	108,3	94,1	112,8	1,7	-10,4
F	109,0	109,2	115,1	134,5	14,6	121,4	128,1	129,9	121,4	129,9	143,4	16,9	120,3	4,4	-0,9
I	111,7	109,0	116,3	120,9	39,9	120,6	126,2	125,0	118,9	120,0	119,2	31,7	:	0,1	-20,4
NL	106,0	95,7	90,5	61,8	71,7	92,3	:	:	:	:	:	:	:	:	-5,4
B	94,5	94,6	99,6	36,2	94,4	126,7	119,0	122,0	112,1	118,7	50,0	105,5	:	15,8	11,8
L	118,5	115,9	124,1	144,1	44,8	151,1	145,7	157,6	135,3	158,1	144,2	40,1	146,2	8,9	-3,2
UK	112,5	114,8	114,7	104,9	97,2	123,2	133,6	106,0	103,5	112,3	80,8	77,4	97,9	-5,5	-20,5
IRL	-	-	-	-	-	-	-	-	-	-	-	-	-	-	-
DK	110,3	114,6	114,2	68,0	126,0	124,0	134,0	111,0	109,0	135,0	56,0	124,0	130,0	1,7	4,8

	SAISONBEREINIGT			SEASONALLY ADJUSTED						DESAISONNALISE		
	JUL	AUG	SEP	MAR	APR	MAI	JUN	JUL	AUG	SEP	A	B
EUR9	-	-	-	-	-	-	-	-	-	-	-	-
D	125,0	120,6	121,4	124,4	125,2	123,6	122,9	122,2	120,4	111,3	-4,8	-7,5
F	119,2	111,5	108,8	114,6	117,5	108,9	110,5	131,0	116,2	113,4	7,1	-2,4
I	112,1	117,3	111,8	120,3	118,6	111,0	111,3	113,6	108,0	:	-4,8	-4,9
NL	94,3	84,2	85,1	:	:	:	:	:	:	:	:	:
B	98,0	101,5	108,2	108,6	112,2	112,1	105,9	114,5	113,5	:	0,3	-0,7
L	134,6	104,7	138,2	149,3	145,9	134,2	151,5	136,2	112,5	135,7	-10,9	20,6
UK	120,9	121,1	111,5	126,2	106,5	101,0	108,3	98,8	101,6	90,1	-8,0	-11,2
IRL	-	-	-	-	-	-	-	-	-	-	-	-
DK	113,9	121,4	112,8	121,2	113,0	109,4	117,9	107,1	117,1	116,9	0,2	-0,2

UMSATZ

TURNOVER

CHIFFRE D'AFFAIRES

1975 = 100

	1977			1978		1979				1980		1980			
	1977	1978	1979	III.	IV.	I.	II.	III.	IV.	I.	II.	MAI	JUN	JUL	AUG
NACE 1/4															
GESAMTE INDUSTRIE (OHNE BAUGEMEINDE)				TOTAL INDUSTRY (EXCLUDING BUILDING)						ENSEMBLE DE L'INDUSTRIE (SANS BATIMENT)					
EUR9	132.0	142.1	163.8	135.3	153.4	152.9	162.9	156.9	182.5	187.0	186.1	184.7	186.3	:	:
D	117.6	122.1	134.9	119.7	130.8	125.0	134.7	133.6	146.5	144.7	145.5	143.9	144.7	142.3	125.6
F	:	:	:	:	:	:	:	:	:	:	:	:	:	:	:
I	158.0	180.3	223.9	165.1	201.6	207.4	220.2	206.0	262.0	273.6	283.9	285.1	281.8	:	:
NL	121.2	124.0	140.7	116.0	134.0	133.0	138.0	134.0	158.0	:	:	:	:	:	:
B	121.0	123.6	138.3	110.7	134.0	130.7	142.3	127.0	153.4	161.7	:	148.9	:	:	:
L	108.0	117.2	135.1	113.7	124.4	129.6	139.0	128.1	143.5	149.9	152.7	144.6	152.7	155.0	97.8
UK	144.7	159.3	184.7	152.4	169.0	174.7	184.2	176.5	203.6	207.8	195.7	:	:	:	:
IRL	-	-	-	-	-	-	-	-	-	-	-	-	-	-	-
DK	126.0	135.4	151.6	130.0	146.3	138.3	149.3	146.7	172.0	168.3	170.3	163.0	182.0	131.0	169.0

	SAISONNEMENTIG			SEASONALLY ADJUSTED						DESAISONNALISE					
	1977	1978	1979	III.	IV.	I.	II.	III.	IV.	I.	II.	MAI	JUN	JUL	AUG
EUR9	142.6	147.3	151.8	141.2	165.9	175.6	186.3	185.3	183.8	184.7	:	:	:	:	
D	123.0	125.4	127.2	134.1	137.2	141.2	147.4	145.8	146.0	142.2	150.6	137.9	:	:	
F	-	-	-	-	-	-	-	-	-	-	-	-	-	-	
I	178.3	191.0	205.9	213.6	222.5	250.2	268.9	277.2	271.6	275.2	:	:	:	:	
NL	123.0	127.0	131.3	137.5	143.2	150.2	:	:	:	:	:	:	:	:	
B	120.0	126.5	129.1	137.0	138.6	147.1	159.6	:	150.9	:	:	:	:	:	
L	118.2	125.4	130.5	132.1	135.6	143.7	150.2	146.4	142.5	144.7	154.3	128.3	:	:	
UK	160.1	163.8	170.1	143.5	185.8	197.5	203.8	197.0	:	:	:	:	:	:	
IRL	-	-	-	-	-	-	-	-	-	-	-	-	-	-	
DK	135.6	141.5	141.5	145.8	151.8	165.6	172.2	168.9	164.0	172.8	169.7	164.1	:	:	

	GRUNDSTOFF- UND PRODUKTIONSGUTERIND.			INTERMEDIATE PRODUCTS INDUSTRIES						IND. DES BIENS INTERMEDIAIRES					
	1977	1978	1979	III.	IV.	I.	II.	III.	IV.	I.	II.	MAI	JUN	JUL	AUG
EUR9	131.4	139.3	169.4	132.2	148.8	155.5	169.5	165.7	187.1	199.4	198.3	197.3	195.4	:	:
D	112.7	116.2	138.2	116.5	121.4	122.1	139.8	143.0	148.0	154.8	155.9	154.4	153.0	148.6	138.7
F	:	:	:	:	:	:	:	:	:	:	:	:	:	:	:
I	161.5	181.4	235.2	163.1	200.5	221.7	238.5	215.9	268.4	298.3	300.7	302.3	295.6	:	:
NL	126.0	128.2	159.2	113.0	138.0	156.0	153.0	146.0	182.0	:	:	:	:	:	:
B	120.3	122.0	140.7	109.7	131.5	132.2	144.8	130.0	155.6	170.9	:	162.3	:	:	
L	106.4	116.9	134.0	113.2	123.5	129.6	138.7	126.4	141.4	146.1	151.5	147.4	147.7	148.3	91.0
UK	151.1	161.5	195.9	149.9	172.1	183.2	193.0	189.7	217.8	223.0	212.3	:	:	:	:
IRL	-	-	-	-	-	-	-	-	-	-	-	-	-	-	-
DK	123.7	131.7	158.2	123.3	134.7	134.3	158.3	155.3	184.7	179.7	190.3	184.0	198.0	129.0	181.0

	SAISONNEMENTIG			SEASONALLY ADJUSTED						DESAISONNALISE					
	1977	1978	1979	III.	IV.	I.	II.	III.	IV.	I.	II.	MAI	JUN	JUL	AUG
EUR9	139.4	146.9	151.7	166.1	174.7	185.5	195.5	195.9	194.7	194.1	:	:	:	:	
D	117.1	121.8	124.4	136.5	143.8	149.2	157.5	154.3	153.7	150.9	153.4	144.8	:	:	
F	-	-	-	-	-	-	-	-	-	-	-	-	-	-	
I	177.4	194.9	214.6	226.7	241.6	264.5	284.3	292.8	287.6	288.5	:	:	:	:	
NL	127.3	133.8	141.8	153.6	163.4	176.6	:	:	:	:	:	:	:	:	
B	119.1	126.2	129.6	140.1	141.6	150.6	167.9	:	164.0	:	:	:	:	:	
L	120.8	126.1	131.0	132.1	133.9	143.3	147.1	144.7	144.5	139.0	150.5	123.6	:	:	
UK	161.3	166.2	172.9	141.4	210.3	214.0	217.2	213.0	:	:	:	:	:	:	
IRL	-	-	-	-	-	-	-	-	-	-	-	-	-	-	
DK	130.7	135.4	156.3	150.3	162.1	179.8	185.1	184.7	183.7	183.3	185.0	172.8	:	:	

UMSATZ

TURNOVER

CHIFFRE D'AFFAIRES

1975 = 100

	1977	1978	1979	1978		1979				1980		1980			
				III.	IV.	I.	II.	III.	IV.	I.	II.	MAI	JUN	JUL	AUG
	INV														
INVESTITIONSGUETERINDUSTRIEN	CAPITAL GOODS INDUSTRIES										IND. DES BIENS D'INVESTISSEMENT				
EUR9	131.5	143.0	156.9	135.3	156.6	147.7	158.1	144.5	177.4	173.0	177.8	176.3	181.7	:	:
D	121.9	128.2	137.2	123.9	141.8	127.6	137.5	130.9	152.6	142.5	146.9	145.5	149.2	143.6	117.4
F	:	:	:	:	:	:	:	:	:	:	:	:	:	:	:
I	152.9	177.2	206.6	158.0	200.6	188.3	201.1	182.0	255.1	242.4	274.4	278.0	275.2	:	:
NL	113.5	113.7	121.2	108.7	130.3	109.0	122.7	114.7	138.3	112.3	122.7	116.0	127.0	102.0	123.0
B	121.3	128.1	137.5	107.9	144.9	129.9	142.8	114.6	162.6	160.6	:	134.8	:	:	:
L	108.6	113.6	145.6	99.9	138.7	130.7	136.7	133.5	181.6	171.7	165.4	122.3	183.5	194.2	103.2
UK	137.6	154.8	171.8	150.0	158.4	168.7	177.8	155.3	185.4	202.3	185.3	:	:	:	:
IRL	-	-	-	-	-	-	-	-	-	-	-	-	-	-	-
DK	125.9	135.7	148.1	120.0	165.0	139.3	140.7	126.7	185.7	161.0	156.7	137.0	174.0	94.0	139.0

	SAISONBEREINIGT			SEASONALLY ADJUSTED								DESAISONNALISE			
	EUR9			145.1	146.5	150.1	155.9	155.5	165.0	175.0	175.9	174.5	175.0	:	:
D				130.1	130.6	132.3	137.3	137.8	140.5	147.1	147.3	148.6	142.7	155.4	138.5
F				-	-	-	-	-	-	-	-	-	-	-	-
I				176.1	184.7	192.2	190.9	199.2	233.9	246.4	261.6	261.5	264.8	:	:
NL				114.9	113.2	118.8	122.0	121.8	122.6	123.1	122.2	121.4	119.9	121.8	131.4
B				126.0	133.3	128.8	134.3	134.6	147.5	158.7	:	137.1	:	:	:
L				109.8	134.4	129.8	133.1	144.2	173.6	173.3	166.0	137.5	184.1	189.7	152.2
UK				157.6	155.4	164.8	176.2	164.5	181.9	195.6	184.5	:	:	:	:
IRL				-	-	-	-	-	-	-	-	-	-	-	-
DK				134.1	146.8	142.9	139.2	141.2	164.6	164.8	157.8	143.6	163.6	156.8	149.2

	VERBRAUCHSGUETERINDUSTRIEN			CONSUMER GOODS INDUSTRIES								IND. DES BIENS DE CONSOMMATION			
	EUR9			140.2	153.2	149.9	156.5	155.9	175.1	178.6	173.6	171.3	175.0	:	:
D	116.7	119.9	127.4	117.5	125.7	122.9	124.8	125.9	135.9	136.8	132.0	129.8	129.9	133.5	122.0
F	:	:	:	:	:	:	:	:	:	:	:	:	:	:	:
I	157.9	181.7	223.0	177.7	205.1	202.8	215.2	216.1	258.1	263.3	262.7	260.1	262.9	:	:
NL	119.7	123.2	130.5	124.0	128.0	124.0	130.0	128.0	140.0	:	:	:	:	:	:
B	122.4	123.0	134.1	115.2	129.7	123.3	136.1	132.2	140.0	142.3	:	132.7	:	:	:
L	115.7	119.9	133.7	125.3	115.9	129.9	141.0	134.3	133.7	141.4	151.1	145.4	159.5	164.0	135.1
UK	141.2	159.8	178.9	157.5	172.5	167.6	176.7	173.9	197.4	191.3	180.9	:	:	:	:
IRL	-	-	-	-	-	-	-	-	-	-	-	-	-	-	-
DK	127.4	138.2	149.1	139.0	142.7	140.3	147.3	150.7	158.0	164.7	163.7	160.0	175.0	148.0	176.0

	SAISONBEREINIGT			SEASONALLY ADJUSTED								DESAISONNALISE			
	EUR9			142.9	148.1	150.7	157.3	159.3	168.9	179.5	175.5	172.6	176.2	:	:
D				119.4	122.0	122.7	126.2	127.9	131.7	136.8	134.2	133.6	132.1	140.9	129.2
F				-	-	-	-	-	-	-	-	-	-	-	-
I				181.1	194.2	204.6	217.4	223.5	245.6	264.9	266.1	259.2	265.3	:	:
NL				124.6	125.3	127.9	127.3	128.8	136.9	:	:	:	:	:	:
B				117.7	127.8	128.0	133.2	135.3	138.6	142.8	:	134.7	:	:	:
L				121.8	123.9	128.7	132.1	131.2	141.1	144.7	144.0	134.9	150.0	150.6	138.2
UK				160.3	165.2	164.9	177.9	177.4	187.9	193.9	183.9	:	:	:	:
IRL				-	-	-	-	-	-	-	-	-	-	-	-
DK				139.3	141.5	143.3	145.3	149.7	156.6	167.2	163.1	159.6	167.1	170.3	165.7

UMSATZ

TURNOVER

CHIFFRE D'AFFAIRES

1975 = 100

	1977	1978	1979	1978		1979				1980		1980			
				III.	IV.	I.	II.	III.	IV.	I.	II.	Mai	JUN	JUL	AUG

ENERGIE

ENERGY

ENERGIE

EUR9	-	-	-	-	-	-	-	-	-	-	-	-	-	-	-	-	-
D	:	:	:	:	:	:	:	:	:	:	:	:	:	:	:	:	:
F	:	:	:	:	:	:	:	:	:	:	:	:	:	:	:	:	:
I	176,5	188,1	225,5	171,7	202,0	224,1	197,8	226,1	253,3	281,3	270,7	253,1	236,8	:	:	:	:
NL	133,5	154,5	:	:	:	:	:	:	:	:	:	:	:	:	:	:	:
B	127,2	107,2	119,8	91,3	113,6	130,5	115,6	97,9	135,1	173,2	:	163,6	:	:	:	:	:
L	:	:	:	:	:	:	:	:	:	:	:	:	:	:	:	:	:
UK	162,2	174,3	237,2	153,7	196,1	225,9	213,5	227,2	282,5	320,8	288,9	:	:	:	:	:	:
IRL	-	-	-	-	-	-	-	-	-	-	-	-	-	-	-	-	-
DK	-	-	-	-	-	-	-	-	-	-	-	-	-	-	-	-	-

SAISONBEREINIGT

SEASONALLY ADJUSTED

DESAISONNALISE

EUR9	-	-	-	-	-	-	-	-	-	-	-	-	-	-	-	-	-
D	-	-	-	-	-	-	-	-	-	-	-	-	-	-	-	-	-
F	-	-	-	-	-	-	-	-	-	-	-	-	-	-	-	-	-
I	178,6	196,1	209,5	206,2	234,3	248,3	265,6	283,4	270,8	265,2	:	:	:	:	:	:	:
NL	128,8	136,8	163,9	:	:	:	:	:	:	:	:	:	:	:	:	:	:
B	94,6	107,0	123,6	116,3	107,1	129,6	161,8	:	170,5	:	:	:	:	:	:	:	:
L	-	-	-	-	-	-	-	-	-	-	-	-	-	-	-	-	-
UK	174,7	180,9	202,1	218,5	246,9	272,8	302,5	303,8	:	:	:	:	:	:	:	:	:
IRL	-	-	-	-	-	-	-	-	-	-	-	-	-	-	-	-	-
DK	-	-	-	-	-	-	-	-	-	-	-	-	-	-	-	-	-

NACE : 22

ERZEUGUNG U. ERSTE BEARBEITUNG VON METALLEN

PROD., PRELIMINARY PROCESS. OF METALS

PROD., PREMIERE TRANSFORMAT. METAUX

EUR9	121,0	129,8	151,0	121,7	155,8	142,3	155,1	144,8	163,8	166,9	168,4	169,8	167,7	:	:	:	:
D	101,2	102,6	119,4	103,0	100,8	109,3	119,7	122,8	125,8	140,6	131,7	128,3	129,9	123,0	119,1	:	:
F	:	:	:	:	:	:	:	:	:	:	:	:	:	:	:	:	:
I	149,5	179,7	216,4	159,1	195,4	209,0	212,7	194,2	249,6	280,0	275,9	290,1	266,8	:	:	:	:
NL	121,0	120,7	140,2	118,0	123,0	130,0	146,0	158,0	147,0	:	:	:	:	:	:	:	:
B	103,9	117,0	137,7	110,4	129,7	132,6	143,8	125,3	144,3	174,6	:	171,4	:	:	:	:	:
L	100,4	117,2	135,3	113,3	124,8	131,5	137,8	129,3	142,6	153,2	154,9	149,8	151,0	150,6	93,7	:	:
UK	146,8	154,1	173,4	136,8	157,8	165,2	141,0	161,8	185,5	154,7	162,6	:	:	:	:	:	:
IRL	-	-	-	-	-	-	-	-	-	-	-	-	-	-	-	-	-
DK	140,3	157,9	177,2	144,3	168,3	165,7	174,3	154,3	214,3	221,3	218,0	215,0	229,0	111,0	203,0	:	:

SAISONBEREINIGT

SEASONALLY ADJUSTED

DESAISONNALISE

EUR9	128,8	154,3	137,4	148,6	155,2	164,7	165,0	164,1	164,7	161,0	:	:	:	:	:	:	:
D	103,8	103,8	107,4	116,5	124,2	129,8	139,1	130,3	127,9	128,0	130,7	125,0	:	:	:	:	:
F	-	-	-	-	-	-	-	-	-	-	-	-	-	-	-	-	-
I	173,7	192,7	203,8	202,4	213,2	245,6	265,6	265,3	267,9	259,2	:	:	:	:	:	:	:
NL	122,8	122,0	129,2	139,3	144,0	148,5	:	:	:	:	:	:	:	:	:	:	:
B	120,1	125,9	133,1	136,9	138,2	143,4	174,0	:	167,4	:	:	:	:	:	:	:	:
L	118,3	130,2	132,1	128,6	135,9	140,8	150,6	146,6	145,5	141,1	153,2	124,4	:	:	:	:	:
UK	147,5	155,1	155,9	175,9	175,3	183,5	134,9	155,5	:	:	:	:	:	:	:	:	:
IRL	-	-	-	-	-	-	-	-	-	-	-	-	-	-	-	-	-
DK	156,5	157,1	157,7	168,6	176,0	198,7	213,5	212,0	215,9	202,5	202,4	202,9	:	:	:	:	:

UMSATZ

TURNOVER

CHIFFRE D'AFFAIRES

1975 = 100

	1977			1978		1979					1980		1980			
	1977	1978	1979	III.	IV.	I.	II.	III.	IV.	I.	II.	MAI	JUN	JUL	AUG	
	NACE : 24															
BE- U. VERARBEITUNG VON STEINEN U. ERDEN	NON-METALLIC MINERAL PRODUCTS															
	PRODUITS MINERAUX NON-METALLIQUES															
EUR9	130.1	142.3	164.2	146.1	152.1	126.1	174.4	172.2	184.3	176.0	207.0	206.6	212.9	:	:	
D	110.3	117.1	130.6	127.7	126.2	89.4	140.6	147.1	145.5	119.1	150.9	151.0	152.6	154.5	137.5	
F	:	:	:	:	:	:	:	:	:	:	:	:	:	:	:	
I	166.9	183.4	230.4	178.9	200.8	198.6	240.0	218.1	264.7	288.8	337.8	341.1	348.7	:	:	
NL	124.0	132.5	131.5	128.0	138.0	78.0	154.0	139.0	155.0	:	:	:	:	:	:	
B	126.5	129.8	141.6	122.6	134.5	102.6	161.9	145.3	156.6	148.9	:	158.4	:	:	:	
L	111.9	120.1	155.5	126.1	132.4	116.7	168.5	164.6	172.1	149.3	184.5	177.2	183.9	206.3	126.8	
UK	136.5	157.5	181.2	161.4	165.2	147.9	187.4	191.2	198.1	190.9	204.0	:	:	:	:	
IRL	-	-	-	-	-	-	-	-	-	-	-	-	-	-	-	
DK	125.2	139.8	154.3	144.0	145.0	104.0	161.3	172.3	179.3	142.3	167.0	167.0	179.0	111.0	170.0	

	SAISONBEREINIGT			SEASONALLY ADJUSTED							DESAISONNALISE			
	1977	1978	1979	1977	1978	1979	1979	1979	1979	1979	1979	1979	1979	1979
EUR9	143.9	148.4	140.2	163.2	169.1	179.9	141.6	197.9	195.5	199.8	:	:	:	:
D	117.9	120.2	111.4	131.4	137.5	139.6	143.6	143.6	143.5	139.8	147.7	134.2	:	:
F	-	-	-	-	-	-	-	-	-	-	-	-	-	-
I	182.4	196.4	207.1	224.1	226.0	259.7	296.0	324.1	315.6	329.4	:	:	:	:
NL	132.4	128.8	93.8	136.8	139.7	147.6	:	:	:	:	:	:	:	:
B	128.8	133.3	110.9	145.5	150.4	154.8	160.9	:	152.7	:	:	:	:	:
L	122.1	128.3	134.0	151.4	161.0	169.0	177.0	172.6	167.7	167.4	177.0	168.7	:	:
UK	161.8	165.8	153.8	179.2	188.9	197.9	205.4	198.8	:	:	:	:	:	:
IRL	-	-	-	-	-	-	-	-	-	-	-	-	-	-
DK	140.4	139.6	124.6	147.4	166.3	173.3	172.7	157.1	157.0	152.5	153.0	144.3	:	:

NACE 25 + 26

	CHEMISCHE IND. + CHEMIEFASERIND.			CHEMICAL IND. INCL. MAN-MADE FIBRES IND.					IND. CHIMIQUE + PROD. DE FIBRES ARTIF. ET SYNTH.						
	1977	1978	1979	1977	1978	1979	1979	1979	1979	1979	1979	1979	1979	1979	
EUR9	133.3	142.0	174.2	134.9	149.7	160.4	178.9	171.5	185.9	200.1	189.0	188.2	183.4	:	:
D	120.0	123.4	139.6	121.7	126.1	131.9	141.6	141.6	143.3	149.6	139.5	139.4	135.0	134.2	121.6
F	:	:	:	:	:	:	:	:	:	:	:	:	:	:	:
I	151.6	171.3	241.5	149.7	191.7	226.4	249.2	221.2	269.2	302.6	288.0	284.0	285.9	:	:
NL	119.2	122.7	157.7	116.0	131.0	138.0	162.0	162.0	169.0	:	:	:	:	:	:
B	131.3	143.6	177.5	129.3	154.3	155.2	180.0	176.6	198.1	203.4	:	197.2	:	:	:
L	103.3	98.8	:	112.2	90.8	:	:	:	:	:	:	:	:	:	:
UK	152.4	163.5	194.9	160.3	170.0	173.5	203.2	195.2	207.2	217.2	203.7	:	:	:	:
IRL	-	-	-	-	-	-	-	-	-	-	-	-	-	-	-
DK	123.1	134.1	152.7	117.0	132.0	146.7	160.7	140.0	163.3	174.0	180.7	168.0	177.0	156.0	157.0

	SAISONBEREINIGT			SEASONALLY ADJUSTED							DESAISONNALISE			
	1977	1978	1979	1977	1978	1979	1979	1979	1979	1979	1979	1979	1979	1979
EUR9	142.3	150.1	155.7	173.5	180.9	187.6	197.1	185.9	185.8	181.3	:	:	:	:
D	124.2	128.1	130.6	138.5	144.2	146.0	149.1	138.5	139.7	133.5	138.6	129.4	:	:
F	-	-	-	-	-	-	-	-	-	-	-	-	-	-
I	169.9	185.6	216.3	239.5	256.2	260.9	289.2	278.3	272.4	277.8	:	:	:	:
NL	122.9	132.2	132.3	158.1	168.1	172.7	:	:	:	:	:	:	:	:
B	139.3	150.4	150.8	175.0	185.9	194.3	201.0	:	199.8	:	:	:	:	:
L	104.3	97.4	:	:	:	:	:	:	:	:	:	:	:	:
UK	163.7	169.1	172.1	196.5	200.1	209.3	219.9	200.3	:	:	:	:	:	:
IRL	-	-	-	-	-	-	-	-	-	-	-	-	-	-
DK	128.2	137.2	137.1	152.2	152.0	168.7	166.6	172.2	169.1	174.6	188.7	164.8	:	:

UMSATZ

TURNOVER

CHIFFRE D'AFFAIRES

1975 = 100

	1977	1978	1979	1978		1979				1980		1980			
				III.	IV.	I.	II.	III.	IV.	I.	II.	MAY	JUN	JUL	AUG
	NACE : 31/36														
METALLVERARBEITENDE INDUSTRIE							ENGINEERING AND ALLIED INDUSTRIES				INDUSTRIES TRANSFORMATRICES DES METAUX				
EUR9	130.1	141.5	155.6	133.6	154.1	146.2	157.0	142.8	176.2	174.0	171.6	174.9	180.3	:	:
D	121.4	127.6	136.5	123.2	140.7	127.2	137.0	130.4	151.6	142.2	136.6	145.2	148.6	142.3	117.1
F	:	:	:	:	:	:	:	:	:	:	:	:	:	:	:
I	152.8	176.5	205.9	157.7	199.2	187.6	200.3	140.6	254.7	241.7	272.7	275.9	273.5	:	:
NL	114.7	115.7	122.5	109.0	132.0	108.0	125.0	118.0	139.0	:	:	:	:	:	:
B	121.1	128.6	137.9	110.2	144.9	129.6	142.7	114.0	165.3	160.2	:	134.4	:	:	:
L	117.2	123.3	155.6	113.7	142.1	141.4	154.6	142.1	164.3	174.6	184.3	159.0	190.6	191.2	98.1
UK	138.1	155.4	172.1	149.4	158.5	149.2	179.4	154.9	184.7	196.6	180.2	179.7	184.1	178.9	148.4
IRL	-	-	-	-	-	-	-	-	-	-	-	-	-	-	-
DK	126.8	135.0	148.6	120.0	158.3	139.0	143.3	130.0	182.0	162.7	159.0	142.0	175.0	96.0	148.0

SAISONGEREINIGT

SEASONALLY ADJUSTED

DESAISONNALISE

EUR9		143.9	144.7	148.0	154.6	154.0	164.5	175.2	170.4	172.0	173.5	:	:
D		129.4	130.0	131.6	136.7	137.3	140.0	146.5	137.9	146.9	140.8	153.2	137.0
F		-	-	-	-	-	-	-	-	-	-	-	-
I		176.1	181.1	190.7	192.3	198.1	232.1	244.4	260.5	260.2	262.7	:	:
NL		115.0	116.4	116.3	123.8	125.0	125.0	:	:	:	:	:	:
B		128.0	133.1	128.8	134.4	133.8	149.9	158.8	:	137.0	:	:	:
L		121.4	138.3	138.4	146.4	153.8	178.7	174.5	179.5	165.8	184.7	191.5	153.2
UK		157.5	155.6	165.0	177.4	164.9	181.4	190.3	178.7	173.7	180.8	189.6	169.9
IRL		-	-	-	-	-	-	-	-	-	-	-	-
DK		133.6	144.1	141.2	140.1	143.9	165.1	165.5	158.3	147.3	163.0	154.5	154.1

NACE : 32

MASCHINENBAU

MECHANICAL ENGINEERING

CONSTR., MACHINES, MATERIEL MECANIQUE

EUR9	125.8	135.1	147.6	129.4	145.7	135.9	149.3	134.7	170.5	163.5	153.8	175.6	177.6	:	:
D	117.3	121.6	128.7	121.3	132.9	114.7	129.2	122.4	148.8	129.9	107.8	155.4	145.5	139.5	113.5
F	:	:	:	:	:	:	:	:	:	:	:	:	:	:	:
I	148.7	168.9	200.8	156.1	181.7	183.2	199.9	177.9	242.3	236.5	271.9	275.8	275.3	:	:
NL	112.0	113.5	116.2	104.7	132.7	99.8	115.7	115.7	133.7	:	:	:	:	:	:
B	115.2	115.3	122.0	98.5	121.2	111.5	131.4	107.0	138.2	140.9	:	121.3	:	:	:
L	107.4	123.4	168.4	109.6	165.5	146.9	153.5	155.9	217.3	195.1	184.3	122.8	209.2	227.1	120.2
UK	132.8	147.1	160.4	138.3	151.7	158.0	166.0	139.8	177.9	187.6	170.8	164.6	178.6	162.3	:
IRL	-	-	-	-	-	-	-	-	-	-	-	-	-	-	-
DK	125.0	137.9	150.3	124.0	174.0	133.3	147.0	131.7	189.0	162.3	174.7	154.0	194.0	98.0	152.0

SAISONGEREINIGT

SEASONALLY ADJUSTED

DESAISONNALISE

EUR9		138.6	134.7	139.2	147.3	144.4	157.2	166.8	154.1	172.1	166.8	:	:
D		126.3	117.6	123.6	129.7	127.5	132.4	138.9	112.3	153.6	133.3	145.3	128.5
F		-	-	-	-	-	-	-	-	-	-	-	-
I		171.6	171.9	183.4	191.6	196.8	224.0	236.7	258.1	252.7	255.2	:	:
NL		110.4	113.8	109.2	117.3	120.7	116.4	:	:	:	:	:	:
B		114.5	113.3	110.4	122.9	123.0	129.0	140.5	:	120.9	:	:	:
L		112.7	156.9	149.8	155.6	164.3	149.8	200.4	190.4	149.9	216.9	222.6	170.2
UK		146.2	148.5	151.1	164.2	151.2	173.2	179.6	169.8	162.9	172.7	174.8	:
IRL		-	-	-	-	-	-	-	-	-	-	-	-
DK		138.9	150.5	139.1	146.0	147.5	162.9	169.0	174.0	167.0	175.2	167.4	158.3

UMSATZ

TURNOVER

CHIFFRE D'AFFAIRES

1975 = 100

1977	1978	1979	1978		1979				1980		1980			
			III.	IV.	I.	II.	III.	IV.	I.	II.	MAI	JUN	JUL	AUG

NACE : 35

BAU VON KRAFTWAGEN U. DEREN EINZELTEILEN

MOTOR VEHICLES, PARTS AND ACCESSORIES

CONSTR. AUTOMOBILES ET PIECES DETACHEES

EUR9	143.7	162.4	180.5	150.0	167.3	181.8	195.4	153.7	191.0	207.2	203.8	197.0	200.2	:	:
D	136.4	148.1	160.8	137.6	159.3	165.6	171.3	143.0	163.0	173.6	171.4	165.6	170.5	158.5	116.2
F	:	:	:	:	:	:	:	:	:	:	:	:	:	:	:
I	152.7	187.5	216.5	169.4	200.8	203.6	220.1	179.6	262.5	275.7	298.1	291.6	278.4	:	:
NL	:	:	:	:	:	:	:	:	:	:	:	:	:	:	:
B	142.7	146.3	171.5	121.5	154.2	176.5	178.0	132.7	198.8	200.4	:	141.1	:	:	:
L	-	-	-	-	-	-	-	-	-	-	-	-	-	-	-
UK	152.8	177.9	197.3	169.2	160.2	201.8	233.1	161.6	192.8	228.0	204.1	:	:	:	:
IRL	-	-	-	-	-	-	-	-	-	-	-	-	-	-	-
DK	151.6	165.3	184.1	145.3	184.3	149.7	199.7	165.7	221.3	201.7	225.0	195.0	269.0	139.0	204.0

SAISONBEREINIGT

SEASONALLY ADJUSTED

DESAISONNALISE

EUR9				167.4	165.8	176.8	185.5	173.5	188.4	199.3	192.5	183.3	191.6	:	:
D				150.8	155.3	162.7	165.3	159.0	159.0	168.6	165.0	159.8	160.9	173.3	152.7
F				-	-	-	-	-	-	-	-	-	-	-	-
I				193.6	195.5	201.7	206.6	208.0	249.8	267.5	278.9	269.0	275.7	:	:
NL				-	-	-	-	-	-	-	-	-	-	-	-
B				144.4	148.3	165.5	167.1	163.0	188.3	188.5	:	145.7	:	:	:
L				-	-	-	-	-	-	-	-	-	-	-	-
UK				183.1	166.7	191.9	219.3	179.4	202.0	214.4	188.1	:	:	:	:
IRL				-	-	-	-	-	-	-	-	-	-	-	-
DK				164.6	167.8	158.6	182.2	184.0	211.5	214.4	209.2	186.8	234.9	211.6	204.7

NACE : 36

FAHRZEUGBAU (OHNE BAU VON KRAFTWAGEN)

MEANS OF TRANSPORT (EXCL. MOTOR VEHICLES)

CONSTR. MAT. TRANSPORT (SAUF AUTOMOB.)

EUR9	126.2	135.4	141.0	126.2	159.0	121.8	138.4	130.9	172.9	160.6	169.0	171.1	185.7	:	:
D	104.5	100.9	94.8	99.7	116.3	61.3	99.7	85.8	132.4	82.9	112.4	83.7	160.2	108.0	86.4
F	:	:	:	:	:	:	:	:	:	:	:	:	:	:	:
I	187.3	215.9	224.3	159.9	273.9	212.8	208.2	197.7	278.5	248.8	270.8	315.2	284.9	:	:
NL	106.2	98.7	108.2	93.0	112.0	99.0	115.0	100.0	119.0	:	:	:	:	:	:
B	88.6	145.5	119.8	121.1	239.3	102.3	130.0	80.1	166.9	106.3	:	227.2	:	:	:
L	-	-	-	-	-	-	-	-	-	-	-	-	-	-	-
UK	131.8	145.8	163.9	150.0	160.5	145.3	156.7	163.9	189.8	200.4	185.9	:	:	:	:
IRL	-	-	-	-	-	-	-	-	-	-	-	-	-	-	-
DK	127.2	118.6	101.0	90.0	127.0	121.7	89.3	67.7	125.3	101.0	63.7	38.0	78.0	57.0	52.0

SAISONBEREINIGT

SEASONALLY ADJUSTED

DESAISONNALISE

EUR9				136.5	138.0	132.0	138.7	141.2	147.2	168.7	170.8	167.1	181.9	:	:
D				104.0	93.7	76.8	101.5	90.5	107.9	99.8	112.0	89.7	130.8	118.4	107.0
F				-	-	-	-	-	-	-	-	-	-	-	-
I				195.3	225.3	219.7	195.5	235.2	237.4	250.5	263.5	282.8	286.0	:	:
NL				99.1	97.3	108.4	110.1	109.6	106.0	:	:	:	:	:	:
B				134.9	198.1	118.9	136.1	101.2	121.0	120.5	:	207.0	:	:	:
L				-	-	-	-	-	-	-	-	-	-	-	-
UK				152.5	143.9	153.9	161.2	165.3	173.3	206.3	193.6	:	:	:	:
IRL				-	-	-	-	-	-	-	-	-	-	-	-
DK				107.1	117.6	123.0	80.9	82.4	115.4	99.6	60.8	28.9	93.4	78.5	88.5

UMSATZ

TURNOVER

CHIFFRE D'AFFAIRES

1975 = 100

	1977			1978		1979				1980		1980			
	1977	1978	1979	III.	IV.	I.	II.	III.	IV.	I.	II.	MAI	JUN	JUL	AUG
	NACE : 41/42														
	NAHRUNGS- UND GENUSSMITTELGEWERBE					FOOD, DRINK AND TOBACCO INDUSTRY					IND. DE L'ALIMENTATION, BOISSONS, TABAC				
EUR9	131,3	141,2	154,3	138,9	150,7	144,1	152,6	151,5	168,8	167,8	169,1	168,8	172,8	1	1
D	115,9	119,1	123,2	116,6	122,1	118,1	123,8	121,0	129,7	127,9	130,3	129,8	130,5	130,8	121,8
F	:	:	:	:	:	:	:	:	:	:	:	:	:	:	:
I	151,0	176,4	207,5	174,0	199,8	186,8	203,4	202,8	237,1	231,8	237,4	235,7	246,9	1	1
ML	121,6	125,6	133,6	126,3	130,3	125,3	133,3	131,3	144,4	144,4	144,4	144,4	144,4	1	1
B	123,1	123,7	136,3	118,6	129,1	127,7	140,0	139,4	136,3	136,4	140,5	140,5	140,5	1	1
L	114,7	117,1	124,3	126,2	108,5	113,4	132,3	129,7	121,8	127,3	142,2	138,8	151,9	151,9	135,1
UK	145,6	140,2	178,2	157,3	174,9	166,1	172,8	173,5	200,8	190,0	183,8	183,8	183,8	1	1
IRL	-	-	-	-	-	-	-	-	-	-	-	-	-	-	-
DK	130,2	141,0	148,3	142,7	142,7	139,3	151,0	150,7	152,3	161,7	170,0	169,0	185,0	170,0	176,0

SAISONBEREINIGT

SEASONALLY ADJUSTED

DESAISONNALISE

EUR9	140,6	145,4	147,5	152,0	153,4	162,5	171,2	169,4	167,5	171,0	1	1
D	117,9	119,4	120,5	122,0	122,3	126,6	130,4	129,0	128,7	128,1	133,7	126,0
F	-	-	-	-	-	-	-	-	-	-	-	-
I	175,7	189,1	192,8	205,8	207,4	223,3	237,1	239,1	235,6	244,4	1	1
ML	126,8	127,4	130,1	129,8	131,9	141,0	141,0	141,0	141,0	141,0	141,0	141,0
B	114,3	128,2	130,4	137,0	137,8	139,0	141,6	141,6	138,6	138,6	138,6	138,6
L	119,4	118,0	118,9	120,9	121,9	132,1	134,0	132,6	126,8	136,5	134,3	130,6
UK	159,0	164,3	169,9	175,7	175,8	188,0	194,4	188,7	188,7	188,7	188,7	188,7
IRL	-	-	-	-	-	-	-	-	-	-	-	-
DK	141,3	145,7	145,4	145,1	149,0	153,3	166,8	164,4	161,5	169,7	174,6	170,9

NACE : 43

TEXTILINDUSTRIE

TEXTILE INDUSTRY

INDUSTRIE TEXTILE

EUR9	130,4	135,5	153,3	125,5	146,2	152,7	152,1	142,6	165,6	175,9	165,5	159,8	168,3	1	1
D	111,0	110,4	114,6	104,6	116,0	117,7	111,2	109,2	120,5	127,6	112,0	108,4	108,7	112,7	91,8
F	:	:	:	:	:	:	:	:	:	:	:	:	:	:	:
I	172,0	188,5	249,4	171,1	209,3	241,9	248,5	226,2	281,2	304,8	302,2	300,7	300,7	1	1
ML	104,5	105,3	106,3	97,2	110,3	104,3	107,3	94,2	113,3	113,3	113,3	113,3	113,3	1	1
B	112,9	110,0	119,0	92,9	124,7	119,9	119,9	104,1	132,1	139,5	112,0	112,0	112,0	1	1
L	-	-	-	-	-	-	-	-	-	-	-	-	-	-	-
UK	137,7	146,1	153,2	138,1	155,1	152,4	154,7	147,0	154,4	152,0	139,5	139,5	139,5	1	1
IRL	-	-	-	-	-	-	-	-	-	-	-	-	-	-	-
DK	109,2	119,4	136,8	117,0	124,5	133,0	127,3	128,3	158,3	156,0	143,3	135,0	151,0	79,0	157,0

SAISONBEREINIGT

SEASONALLY ADJUSTED

DESAISONNALISE

EUR9	136,2	141,4	144,7	152,4	155,6	161,1	167,0	166,1	161,8	166,8	1	1
D	111,0	112,4	111,7	114,5	115,5	117,0	121,3	116,3	115,9	112,6	125,3	108,0
F	-	-	-	-	-	-	-	-	-	-	-	-
I	145,4	206,1	226,4	241,7	257,6	283,0	288,3	294,7	289,1	289,7	1	1
ML	104,3	104,0	102,1	106,9	108,6	107,5	107,5	107,5	107,5	107,5	107,5	107,5
B	106,7	116,9	112,7	116,4	120,9	122,0	131,9	131,9	120,8	120,8	120,8	120,8
L	-	-	-	-	-	-	-	-	-	-	-	-
UK	146,5	147,8	144,9	154,3	155,8	151,9	149,2	141,1	141,1	141,1	141,1	141,1
IRL	-	-	-	-	-	-	-	-	-	-	-	-
DK	124,6	123,7	129,0	151,7	135,5	151,1	150,3	150,1	146,2	150,9	145,7	138,9

UMSATZ

TURNOVER

CHIFFRE D'AFFAIRES

1975 = 100

1977	1978	1979	1978		1979				1980		1980			
			III.	IV.	I.	II.	III.	IV.	I.	II.	MAI	JUN	JUL	AUG

NACE : 45

SCHUH- UND BEKLEIDUNGSGENERBE

FOOTWEAR AND CLOTHING INDUSTRY

IND. DE LA CHAUSSURE ET DE L'HABILLEMENT

EUR9	128.1	137.3	159.5	147.3	142.1	162.3	141.7	170.4	163.7	192.4	154.3	144.4	141.4	:	:
D	109.7	111.6	116.7	122.6	110.4	128.0	94.9	130.1	113.8	137.6	96.7	86.8	86.3	128.4	125.2
F	:	:	:	:	:	:	:	:	:	:	:	:	:	:	:
I	168.4	185.1	247.1	204.0	194.0	236.2	222.9	268.1	261.1	328.0	268.0	256.5	225.4	:	:
NL	95.2	96.0	96.5	101.3	96.2	104.3	86.2	101.3	94.2	:	:	:	:	:	:
B	103.0	98.3	117.7	94.7	94.0	159.6	98.7	111.2	101.4	120.6	:	85.1	:	:	:
L	78.3	72.2	:	68.9	75.7	:	:	:	:	:	:	:	:	:	:
UK	134.6	153.6	174.4	157.7	167.1	167.1	167.2	176.8	186.5	182.9	161.7	:	:	:	:
IRL	-	-	-	-	-	-	-	-	-	-	-	-	-	-	-
DK	118.3	119.8	135.4	139.7	119.0	134.0	110.0	158.3	139.3	165.0	110.0	98.0	106.0	83.0	208.0

SAISONBEREINIGT

SEASONALLY ADJUSTED

DESAISONNALISE

EUR9	139.4	145.8	150.9	155.2	163.2	168.6	178.8	172.7	166.1	168.6	:	:
D	111.3	115.3	115.1	113.6	117.6	118.9	122.3	117.5	114.0	116.1	131.1	116.0
F	-	-	-	-	-	-	-	-	-	-	-	-
I	191.9	199.3	215.5	237.5	259.2	276.4	307.2	295.6	279.2	279.7	:	:
NL	96.6	98.9	97.2	96.2	96.1	97.0	:	:	:	:	:	:
B	95.6	98.8	141.4	105.5	114.7	112.0	102.8	:	102.3	:	:	:
L	73.9	73.7	:	:	:	:	:	:	:	:	:	:
UK	157.0	163.8	164.8	172.7	176.4	182.8	181.6	169.9	:	:	:	:
IRL	-	-	-	-	-	-	-	-	-	-	-	-
DK	122.1	126.8	123.4	130.3	139.0	147.7	155.2	135.5	132.1	138.3	149.3	142.1

AUFTRAGSEINGÄNGE - GESAMT

NEW ORDERS - TOTAL

ENTRÉES DE COMMANDES - ENSEMBLE

1975 = 100

	1977	1978	1979	1978		1979				1980		1980			
				III.	IV.	I.	II.	III.	IV.	I.	II.	Mai	JUN	JUL	AUG
NACE 1/4															
GESAMTE INDUSTRIE (OHNE BAUGEWERBE)				TOTAL INDUSTRY (EXCLUDING BUILDING)								ENSEMBLE DE L'INDUSTRIE (SANS BATIMENT)			
EUR9	-	-	-	-	-	-	-	-	-	-	-	-	-	-	-
D	113,5	119,1	132,8	115,7	124,1	127,5	135,6	129,4	138,6	?	?	?	?	?	?
F	-	-	-	-	-	-	-	-	-	-	-	-	-	-	-
I	154,8	185,9	233,7	166,6	205,5	226,5	231,5	201,3	275,6	302,5	279,1	270,9	275,9	?	?
NL	-	-	-	-	-	-	-	-	-	-	-	-	-	-	-
B	118,2	120,2	137,3	105,2	131,9	137,4	138,5	118,7	154,6	161,4	?	133,5	?	?	?
L	-	-	-	-	-	-	-	-	-	-	-	-	-	-	-
UK	-	-	-	-	-	-	-	-	-	-	-	-	-	-	-
IRL	-	-	-	-	-	-	-	-	-	-	-	-	-	-	-
DK	128,0	140,2	160,4	134,9	150,3	144,9	158,9	155,3	182,3	182,0	176,0	169,3	179,3	133,2	168,3

EUR9	SAISONNEREINIGT			SEASONALLY ADJUSTED							DESAISONNALISE				
EUR9	-	-	-	-	-	-	-	-	-	-	-	-	-	-	-
D	-	-	-	119,4	123,3	127,0	132,5	133,9	137,4	?	?	?	?	?	?
F	-	-	-	-	-	-	-	-	-	-	-	-	-	-	-
I	-	-	-	187,6	194,0	215,6	227,6	236,2	258,0	277,2	276,3	260,3	283,5	?	?
NL	-	-	-	-	-	-	-	-	-	-	-	-	-	-	-
B	-	-	-	120,2	123,1	129,5	135,5	137,7	143,5	153,4	?	138,3	?	?	?
L	-	-	-	-	-	-	-	-	-	-	-	-	-	-	-
UK	-	-	-	-	-	-	-	-	-	-	-	-	-	-	-
IRL	-	-	-	-	-	-	-	-	-	-	-	-	-	-	-
DK	-	-	-	142,5	145,9	145,1	156,0	161,8	175,9	182,9	175,4	171,5	176,1	172,8	167,0

EUR9	INVESTITIONSGÜTERINDUSTRIEN			CAPITAL GOODS INDUSTRIES							IND. DES BIENS D'INVESTISSEMENT				
EUR9	-	-	-	-	-	-	-	-	-	-	-	-	-	-	-
D	117,8	124,3	137,3	118,9	133,0	138,6	137,3	129,3	144,0	?	?	?	?	?	?
F	-	-	-	-	-	-	-	-	-	-	-	-	-	-	-
I	-	-	-	-	-	-	-	-	-	-	-	-	-	-	-
NL	110,7	119,3	116,8	113,3	127,7	107,3	118,0	116,0	126,0	117,7	121,0	115,0	124,0	111,0	114,0
B	119,0	123,1	146,9	117,7	136,1	146,2	148,8	122,9	169,8	178,2	?	141,3	?	?	?
L	-	-	-	-	-	-	-	-	-	-	-	-	-	-	-
UK	-	-	-	-	-	-	-	-	-	-	-	-	-	-	-
IRL	-	-	-	-	-	-	-	-	-	-	-	-	-	-	-
DK	134,2	152,3	181,6	144,8	178,0	154,1	169,4	167,1	236,6	208,0	180,4	166,7	175,7	105,8	159,7

EUR9	SAISONNEREINIGT			SEASONALLY ADJUSTED							DESAISONNALISE				
EUR9	-	-	-	-	-	-	-	-	-	-	-	-	-	-	-
D	-	-	-	119,5	130,4	135,7	143,9	133,0	140,2	?	?	?	?	?	?
F	-	-	-	-	-	-	-	-	-	-	-	-	-	-	-
I	-	-	-	-	-	-	-	-	-	-	-	-	-	-	-
NL	-	-	-	122,4	117,7	109,3	118,4	123,0	116,2	119,8	120,1	117,5	119,4	124,0	122,6
B	-	-	-	123,7	127,9	147,7	146,0	144,1	156,2	169,4	?	149,5	?	?	?
L	-	-	-	-	-	-	-	-	-	-	-	-	-	-	-
UK	-	-	-	-	-	-	-	-	-	-	-	-	-	-	-
IRL	-	-	-	-	-	-	-	-	-	-	-	-	-	-	-
DK	-	-	-	160,2	164,3	150,6	174,1	180,8	213,4	206,4	190,9	188,0	182,7	163,2	165,1

AUFTRAGSEINGANGS - GESAMT

NEW ORDERS - TOTAL

ENTREES DE COMMANDES - ENSEMBLE

1975 = 100

	1977	1978	1979	1978		1979				1980		1980			
				III.	IV.	I.	II.	III.	IV.	I.	II.	MAI	JUN	JUL	AUG
NACE : 32															
MASCHINENBAU				MECHANICAL ENGINEERING								CONSTRN.,MACHINES,MATERIEL MECANIQUE			
EUR9	126.6	137.8	157.1	129.3	148.7	153.4	157.5	146.5	170.9	:	:	-	-	-	-
D	105.5	112.7	124.3	109.9	121.0	119.5	126.4	120.9	130.4	:	:	:	:	:	:
F	-	-	-	-	-	-	-	-	-	:	:	-	-	-	-
I	161.0	184.1	232.9	155.1	205.1	219.2	221.6	207.2	283.8	296.7	284.3	283.5	300.4	:	:
NL	116.8	112.3	115.5	106.3	139.3	94.2	117.3	125.3	125.3	:	:	-	-	-	-
B	117.7	118.3	139.0	106.3	123.3	141.4	134.2	131.0	149.3	156.2	:	127.2	:	:	:
L	-	-	-	-	-	-	-	-	-	-	:	-	-	-	-
UK	148.9	164.2	182.9	156.8	170.9	190.2	188.7	163.7	189.2	209.2	180.1	169.0	185.7	159.1	135.6
IRL	-	-	-	-	-	-	-	-	-	-	-	-	-	-	-
DK	134.5	152.2	171.5	146.2	177.3	162.3	162.6	164.9	196.0	199.0	179.0	175.3	170.3	112.2	180.3

	SAISONBEREINIGT			SEASONALLY ADJUSTED						DESAISONNALISE					
	EUR9			133.3	146.1	149.9	159.6	153.5	165.1	:	:	-	-	-	-
D				105.0	123.0	121.2	129.1	119.2	129.1	:	:	:	:	:	:
F				-	-	-	-	-	-	:	:	-	-	-	-
I				176.0	192.6	205.1	215.8	232.0	265.3	274.3	284.3	275.0	295.3	:	:
NL				111.8	120.0	101.1	121.6	129.2	110.3	:	:	-	-	-	-
B				120.4	118.6	132.7	132.5	145.1	145.1	150.9	:	128.3	:	:	:
L				-	-	-	-	-	-	-	:	-	-	-	-
UK				165.9	168.3	181.9	187.7	176.1	187.4	197.7	180.3	169.1	183.3	175.7	157.5
IRL				-	-	-	-	-	-	-	-	-	-	-	-
DK				158.3	164.0	157.3	171.1	176.3	181.4	193.7	188.9	191.1	176.7	174.6	172.3

	SAISONBEREINIGT			SEASONALLY ADJUSTED						DESAISONNALISE					
	EUR9			135.7	141.2	147.6	147.6	149.5	149.7	:	:	-	-	-	-
D				109.7	111.3	111.6	109.5	112.4	110.3	:	:	:	:	:	:
F				-	-	-	-	-	-	:	:	-	-	-	-
I				187.9	220.3	235.4	240.9	241.6	253.7	277.8	255.5	241.7	244.3	:	:
NL				112.4	100.1	106.8	108.2	109.0	107.7	:	:	-	-	-	-
B				109.8	110.9	108.9	114.5	117.3	124.0	119.2	:	119.9	:	:	:
L				-	-	-	-	-	-	-	:	-	-	-	-
UK				143.4	142.0	150.4	142.8	146.5	142.7	145.2	132.4	:	:	:	:
IRL				-	-	-	-	-	-	-	-	-	-	-	-
DK				127.2	121.3	128.0	122.1	127.3	136.0	151.1	144.1	131.7	146.0	145.8	130.7

	SAISONBEREINIGT			SEASONALLY ADJUSTED						DESAISONNALISE					
	EUR9			135.7	141.2	147.6	147.6	149.5	149.7	:	:	-	-	-	-
D				109.7	111.3	111.6	109.5	112.4	110.3	:	:	:	:	:	:
F				-	-	-	-	-	-	:	:	-	-	-	-
I				187.9	220.3	235.4	240.9	241.6	253.7	277.8	255.5	241.7	244.3	:	:
NL				112.4	100.1	106.8	108.2	109.0	107.7	:	:	-	-	-	-
B				109.8	110.9	108.9	114.5	117.3	124.0	119.2	:	119.9	:	:	:
L				-	-	-	-	-	-	-	:	-	-	-	-
UK				143.4	142.0	150.4	142.8	146.5	142.7	145.2	132.4	:	:	:	:
IRL				-	-	-	-	-	-	-	-	-	-	-	-
DK				127.2	121.3	128.0	122.1	127.3	136.0	151.1	144.1	131.7	146.0	145.8	130.7

ABNAENGIG BESCHAEFTIGTE

NUMBER OF EMPLOYEES

NOMBRE DE SALARIES

1975 = 100

	1977	1978	1979	1978		1979				1980		1980			
				III.	IV.	I.	II.	III.	IV.	I.	II.	Mai	JUN	JUL	AUG
NACE 1/4															
GESAMTE INDUSTRIE (OHNE BAUGEWERBE)				TOTAL INDUSTRY (EXCLUDING BUILDING)								ENSEMBLE DE L'INDUSTRIE (SANS BATIMENT)			
EUR9	97.4	96.2	95.6	96.4	96.1	95.5	95.6	95.9	95.6	94.9	94.8	-	-	-	-
D	96.8	96.1	96.5	96.4	96.5	95.7	95.8	96.9	97.3	97.0	96.9	96.9	97.0	97.3	97.5
F	98.2	96.1	94.5	96.2	95.5	94.9	95.0	94.5	93.9	93.4	93.6	-	-	-	-
I	97.8	96.7	97.0	96.6	96.5	96.8	97.1	97.3	96.9	96.6	96.6	96.5	96.6	96.6	96.6
NL	93.8	91.3	89.8	91.8	90.8	89.8	89.8	89.8	89.8	89.8	89.8	89.8	89.8	89.8	89.8
B	91.8	87.4	86.3	87.1	86.3	85.7	87.5	86.4	85.6	85.2	85.2	85.2	85.2	85.2	85.2
L	94.6	88.3	85.6	88.3	87.4	87.0	86.2	86.7	84.5	83.3	83.5	83.5	83.3	83.3	83.1
UK	98.4	97.8	96.5	97.9	97.7	96.8	96.7	96.8	95.4	93.5	91.9	91.8	91.4	90.9	90.1
IRL	104.4	107.2	111.5	107.8	108.8	109.1	111.6	112.1	113.2	111.5	111.5	111.5	111.5	111.5	111.5
DK	100.7	100.3	100.9	101.2	100.3	99.1	101.0	102.0	101.5	101.2	100.9	100.8	101.6	100.7	100.0

	GRUNDSTOFF- UND PRODUKTIONSWEITERIND.			INTERMEDIATE PRODUCTS INDUSTRIES								IND. DES BIENS INTERMEDIAIRES			
	1977	1978	1979	1978 III.	1978 IV.	1979 I.	1979 II.	1979 III.	1979 IV.	1980 I.	1980 II.	1980 Mai	1980 JUN	1980 JUL	1980 AUG
EUR9	96.7	94.8	93.6	94.8	94.4	93.5	93.8	93.9	93.4	92.4	92.5	-	-	-	-
D	95.0	93.3	92.5	93.6	93.3	91.4	92.2	93.3	93.3	93.1	93.5	93.5	93.6	93.9	94.0
F	97.7	95.3	93.5	95.1	94.5	93.9	93.9	93.3	92.9	92.9	92.9	-	-	-	-
I	97.9	96.0	95.3	95.8	95.4	95.3	95.4	95.4	95.0	95.0	95.0	95.0	95.0	95.0	95.0
NL	94.0	90.2	88.2	90.0	89.0	89.0	88.0	88.0	88.0	88.0	88.0	88.0	88.0	88.0	88.0
B	90.6	85.6	84.7	85.1	84.4	83.9	87.0	84.4	83.3	83.3	83.3	83.3	83.3	83.3	83.3
L	93.1	85.8	82.3	85.7	84.6	83.9	83.1	81.4	80.9	79.7	79.6	79.7	79.0	79.0	78.6
UK	98.3	97.2	95.7	97.3	97.0	96.2	95.9	95.9	94.8	92.5	90.7	90.7	90.7	90.7	90.7
IRL	105.4	107.2	111.5	107.7	107.9	108.8	112.6	111.8	112.7	111.5	111.5	111.5	111.5	111.5	111.5
DK	102.9	104.0	104.3	105.1	104.3	102.0	104.4	105.7	105.2	103.9	103.2	103.2	103.4	102.4	100.8

	INVESTITIONSGÜTERINDUSTRIEN			CAPITAL GOODS INDUSTRIES								IND. DES BIENS D'INVESTISSEMENT			
	1977	1978	1979	1978 III.	1978 IV.	1979 I.	1979 II.	1979 III.	1979 IV.	1980 I.	1980 II.	1980 Mai	1980 JUN	1980 JUL	1980 AUG
EUR9	97.9	97.4	97.2	97.5	97.5	97.1	97.0	97.4	97.5	96.5	96.1	-	-	-	-
D	96.2	98.1	99.0	98.3	98.6	98.3	98.2	99.4	100.1	100.0	100.0	100.0	100.0	100.4	100.4
F	98.0	96.0	94.5	95.9	95.5	94.9	94.7	94.3	94.3	94.0	94.0	94.0	94.0	94.0	94.0
I	98.8	98.4	100.4	98.5	98.9	99.7	100.4	100.6	100.6	100.6	100.6	100.6	100.6	100.6	100.6
NL	93.2	90.2	90.0	90.0	90.0	90.0	90.0	90.0	90.0	90.0	90.0	90.0	90.0	90.0	90.0
B	95.1	93.0	93.1	92.4	92.1	91.6	92.6	93.7	94.3	93.7	93.7	93.7	93.7	93.7	93.7
L	101.3	97.4	95.8	97.2	95.7	95.3	94.5	95.6	97.7	99.1	101.1	101.1	102.1	102.5	102.1
UK	98.3	98.4	96.7	98.6	98.3	97.4	96.7	96.7	96.0	94.0	92.8	92.8	92.8	92.8	92.8
IRL	115.0	120.9	130.7	121.1	125.2	125.8	128.8	131.4	136.2	136.5	136.5	136.5	136.5	136.5	136.5
DK	99.5	98.4	99.4	98.9	99.0	98.7	99.2	99.3	100.5	102.0	100.6	100.4	100.8	100.1	100.3

	VERBRAUCHSGÜTERINDUSTRIEN			CONSUMER GOODS INDUSTRIES								IND. DES BIENS DE CONSOMMATION			
	1977	1978	1979	1978 III.	1978 IV.	1979 I.	1979 II.	1979 III.	1979 IV.	1980 I.	1980 II.	1980 Mai	1980 JUN	1980 JUL	1980 AUG
EUR9	96.8	95.7	95.1	96.0	95.4	94.8	95.1	95.7	94.9	94.1	94.3	-	-	-	-
D	95.9	95.4	95.7	95.8	95.8	95.1	95.0	96.1	96.3	95.4	95.1	95.0	95.0	95.4	95.7
F	98.0	96.7	95.9	97.3	96.1	95.9	96.5	96.3	95.1	94.4	94.4	94.4	94.4	94.4	94.4
I	96.8	95.2	94.5	94.9	94.2	94.0	94.6	95.1	94.2	94.2	94.2	94.2	94.2	94.2	94.2
NL	92.5	89.7	87.7	90.2	89.2	88.2	87.2	88.2	87.2	87.2	87.2	87.2	87.2	87.2	87.2
B	89.2	85.4	82.6	85.5	84.0	83.4	82.9	82.9	81.2	80.2	80.2	80.2	80.2	80.2	80.2
L	97.6	98.0	98.3	94.7	99.7	100.5	99.3	97.8	95.7	95.3	95.9	95.6	95.4	95.7	95.9
UK	98.7	98.0	97.3	98.7	98.0	96.8	97.6	97.4	97.0	94.1	92.8	92.8	92.8	92.8	92.8
IRL	103.7	105.4	108.0	106.3	106.8	106.6	108.0	108.7	108.9	106.7	106.7	106.7	106.7	106.7	106.7
DK	100.0	99.3	99.8	100.4	98.6	97.5	100.3	101.5	99.6	98.4	99.7	99.5	101.1	100.1	99.2

AUFTRAGSEINGAENGE - GESAMT

NEW ORDERS - TOTAL

ENTREES DE COMMANDES - ENSEMBLE

1975 = 100

	1977	1978	1979	1978		1979				1980		1980			
				III.	IV.	I.	II.	III.	IV.	I.	II.	MAI	JUN	JUL	AUG
NACE : 32															
MASCHINENBAU							MECHANICAL ENGINEERING				CONSTRN., MACHINES, MATERIEL MECANIQUE				
EUR9	126.6	137.8	157.1	129.3	148.7	153.4	157.5	146.5	170.9	:	:	-	-	-	-
D	105.5	112.7	124.3	109.9	121.0	119.5	126.4	120.9	130.4	:	:	:	:	:	:
F	-	-	-	-	-	-	-	-	-	-	-	-	-	-	-
I	161.0	184.1	232.9	155.1	205.1	219.2	221.6	207.2	283.8	296.7	284.3	283.5	300.4	:	:
NL	116.8	112.3	115.5	106.3	139.3	94.2	117.3	125.3	125.3	:	:	-	-	-	-
B	117.7	118.3	139.0	106.3	123.3	141.4	134.2	131.0	149.3	158.2	:	127.2	:	:	:
L	-	-	-	-	-	-	-	-	-	-	-	-	-	-	-
UK	148.9	164.2	182.9	156.8	170.9	190.2	188.7	163.7	189.2	209.2	180.1	169.0	185.7	159.1	135.6
IRL	-	-	-	-	-	-	-	-	-	-	-	-	-	-	-
DK	134.5	152.2	171.5	146.2	177.3	162.3	162.6	164.9	196.0	199.0	179.0	175.3	170.3	112.2	180.3

	SAISONBEREINIGT			SEASONALLY ADJUSTED						DESAISONNALISE					
	EUR9			133.3	146.1	149.9	159.6	153.5	165.1	:	:	-	-	-	-
D				105.0	123.0	121.2	129.1	119.2	129.1	:	:	:	:	:	:
F				-	-	-	-	-	-	-	-	-	-	-	-
I				176.0	192.6	205.1	215.8	232.0	265.3	279.3	284.3	275.0	295.3	:	:
NL				111.8	120.0	101.1	121.6	129.2	110.3	:	:	-	-	-	-
B				120.4	118.6	132.7	132.5	145.1	145.1	150.9	:	128.3	:	:	:
L				-	-	-	-	-	-	-	-	-	-	-	-
UK				165.9	168.3	181.9	187.7	176.1	187.4	197.7	180.3	169.1	183.3	175.7	157.5
IRL				-	-	-	-	-	-	-	-	-	-	-	-
DK				158.3	164.0	157.3	171.1	176.3	161.4	193.7	188.9	191.1	176.7	174.6	172.3

NACE : 43

	TEXTILINDUSTRIE			TEXTILE INDUSTRY						INDUSTRIE TEXTILE						
	EUR9			115.4	151.9	159.0	146.2	126.9	161.4	:	:	-	-	-	-	
D				104.7	108.1	111.0	94.9	119.5	114.8	112.1	98.6	118.7	:	:	:	:
F				-	-	-	-	-	-	-	-	-	-	-	-	
I				156.1	193.6	242.1	156.2	234.1	263.3	243.5	193.8	267.8	315.7	258.2	250.6	236.5
NL				104.0	107.0	107.5	98.0	107.0	114.0	108.0	95.0	113.0	:	:	-	-
B				109.2	107.6	117.1	92.1	119.1	118.5	117.1	98.7	134.1	126.2	:	117.7	:
L				-	-	-	-	-	-	-	-	-	-	-	-	
UK				132.0	142.2	145.9	125.0	154.0	163.3	134.3	130.7	155.3	159.3	122.0	:	:
IRL				-	-	-	-	-	-	-	-	-	-	-	-	
DK				102.7	118.0	128.4	114.6	128.6	134.2	117.6	117.2	144.5	160.5	137.2	122.9	135.9

	SAISONBEREINIGT			SEASONALLY ADJUSTED						DESAISONNALISE					
	EUR9			135.7	141.2	147.6	147.6	149.5	149.7	:	:	-	-	-	-
D				109.7	111.3	111.6	109.5	112.4	110.3	:	:	:	:	:	:
F				-	-	-	-	-	-	-	-	-	-	-	-
I				187.9	220.3	235.4	240.9	241.6	253.7	277.8	255.5	241.7	244.3	:	:
NL				112.4	100.1	106.8	108.2	109.0	107.7	:	:	-	-	-	-
B				109.8	110.9	108.9	114.5	117.3	124.0	119.2	:	119.9	:	:	:
L				-	-	-	-	-	-	-	-	-	-	-	-
UK				143.4	142.0	150.4	142.8	146.5	142.7	145.2	132.4	:	:	:	:
IRL				-	-	-	-	-	-	-	-	-	-	-	-
DK				127.2	121.3	128.0	122.1	127.3	136.0	151.1	144.1	131.7	146.0	145.8	130.7

ABHÄNGIG BESCHÄFTIGTE

NUMBER OF EMPLOYEES

NOMBRE DE SALARIÉS

1975 = 100

	1977	1978	1979	1978		1979				1980		1980			
				III.	IV.	I.	II.	III.	IV.	I.	II.	MAI	JUN	JUL	AUG
NACE 1/4															
GESAMTE INDUSTRIE (OHNE BAUGEWERBE)				TOTAL INDUSTRY (EXCLUDING BUILDING)								ENSEMBLE DE L'INDUSTRIE (SANS BATIMENT)			
EUR9	97.4	96.2	95.6	96.4	96.1	95.5	95.6	95.9	95.6	94.9	94.8	-	-	-	-
D	96.8	96.1	96.5	96.4	96.5	95.7	95.8	96.9	97.3	97.0	96.9	96.9	97.0	97.3	97.5
F	98.2	96.1	94.5	96.2	95.5	94.9	95.0	94.5	93.9	93.4	93.6	-	-	-	-
I	97.8	96.7	97.0	96.6	96.5	96.8	97.1	97.3	96.9	96.6	96.6	96.5	96.6	96.6	96.6
NL	93.8	91.3	89.8	91.8	90.8	89.8	89.8	89.8	89.8	89.8	89.8	89.8	89.8	89.8	89.8
B	91.4	87.4	86.3	87.1	86.3	85.7	87.5	86.4	85.6	85.2	85.2	85.2	85.2	85.2	85.2
L	94.6	88.3	85.6	88.3	87.4	87.0	86.2	86.7	84.5	83.3	83.5	83.5	83.3	83.3	83.1
UK	98.4	97.8	96.5	97.9	97.7	96.8	96.7	96.8	95.4	93.5	91.9	91.8	91.4	90.9	90.1
IRL	104.4	107.2	111.5	107.8	108.8	109.1	111.6	112.1	113.2	111.5	111.5	111.5	111.5	111.5	111.5
DK	100.7	100.3	100.9	101.2	100.3	99.1	101.0	102.0	101.5	101.2	100.9	100.8	101.6	100.7	100.0

	1977	1978	1979	1978		1979				1980		1980			
				III.	IV.	I.	II.	III.	IV.	I.	II.	MAI	JUN	JUL	AUG
IMI															
GRUNDSTOFF- UND PRODUKTIONSGÜTERIND.				INTERMEDIATE PRODUCTS INDUSTRIES								IND. DES BIENS INTERMÉDIAIRES			
EUR9	96.7	94.8	93.6	94.8	94.4	93.5	93.8	93.9	93.4	92.4	92.5	-	-	-	-
D	95.0	93.3	92.5	93.6	93.3	91.4	92.2	93.3	93.3	93.1	93.5	93.5	93.6	93.9	94.0
F	97.7	95.3	93.5	95.1	94.5	93.9	93.9	93.3	92.9	92.9	92.9	-	-	-	-
I	97.9	96.0	95.3	95.8	95.4	95.3	95.4	95.4	95.0	95.0	95.0	95.0	95.0	95.0	95.0
NL	94.0	90.2	88.2	90.0	89.0	89.0	89.0	89.0	89.0	89.0	89.0	89.0	89.0	89.0	89.0
B	90.6	85.6	84.7	85.1	84.4	83.9	87.0	84.4	83.3	83.3	83.3	83.3	83.3	83.3	83.3
L	93.1	85.8	82.3	85.7	84.6	83.9	83.1	81.4	80.9	79.7	79.6	79.7	79.0	79.0	78.6
UK	98.5	97.2	95.7	97.3	97.0	96.2	95.9	95.9	94.8	92.5	90.7	90.7	90.7	90.7	90.7
IRL	105.4	107.2	111.5	107.7	107.9	108.8	112.6	111.8	112.7	111.5	111.5	111.5	111.5	111.5	111.5
DK	102.9	104.0	104.3	105.1	104.3	102.0	104.4	105.7	105.2	103.9	103.2	103.2	103.4	102.4	100.8

	1977	1978	1979	1978		1979				1980		1980			
				III.	IV.	I.	II.	III.	IV.	I.	II.	MAI	JUN	JUL	AUG
INV															
INVESTITIONSGÜTERINDUSTRIEN				CAPITAL GOODS INDUSTRIES								IND. DES BIENS D'INVESTISSEMENT			
EUR9	97.9	97.4	97.2	97.5	97.5	97.1	97.0	97.4	97.5	96.5	96.1	-	-	-	-
D	96.2	98.1	99.0	98.3	98.6	98.3	98.2	99.4	100.1	100.0	100.0	100.0	100.0	100.4	100.4
F	98.0	96.0	94.5	95.9	95.5	94.9	94.7	94.5	94.5	94.0	94.0	94.0	94.0	94.0	94.0
I	98.4	98.4	100.4	98.5	98.9	99.7	100.4	100.8	100.8	99.8	99.8	99.8	99.8	99.8	99.8
NL	93.2	90.2	90.0	90.0	90.0	90.0	90.0	90.0	90.0	90.0	90.0	90.0	90.0	90.0	90.0
B	95.1	93.0	93.1	92.4	92.1	91.6	92.6	93.7	94.3	93.7	93.7	93.7	93.7	93.7	93.7
L	101.3	97.4	95.8	97.2	95.7	95.3	94.5	95.6	97.7	99.1	101.1	101.1	102.1	102.5	102.1
UK	98.3	98.4	96.7	98.6	98.3	97.4	96.7	96.7	96.0	94.0	92.8	92.8	92.8	92.8	92.8
IRL	115.0	120.9	130.7	121.1	125.2	125.8	128.8	131.4	136.2	136.5	136.5	136.5	136.5	136.5	136.5
DK	99.5	98.4	99.4	99.9	99.0	98.7	99.2	99.3	100.5	102.0	100.6	100.4	100.8	100.1	100.3

	1977	1978	1979	1978		1979				1980		1980			
				III.	IV.	I.	II.	III.	IV.	I.	II.	MAI	JUN	JUL	AUG
CON															
VERBRAUCHSGÜTERINDUSTRIEN				CONSUMER GOODS INDUSTRIES								IND. DES BIENS DE CONSOMMATION			
EUR9	96.6	95.7	95.1	96.0	95.4	94.8	95.1	95.7	94.9	94.1	94.3	-	-	-	-
D	95.9	95.4	95.7	95.8	95.8	95.1	95.0	96.1	96.3	95.4	95.1	95.0	95.0	95.4	95.7
F	98.0	96.7	95.9	97.3	96.3	95.9	96.5	96.3	95.1	94.4	94.9	94.9	94.9	94.9	94.9
I	96.8	95.2	94.5	94.9	94.2	94.0	94.6	95.1	94.2	94.2	94.2	94.2	94.2	94.2	94.2
NL	92.5	89.7	87.7	90.2	89.2	88.2	87.2	88.2	87.2	87.2	87.2	87.2	87.2	87.2	87.2
B	99.2	95.4	92.6	95.5	94.0	93.4	92.9	92.9	91.2	90.2	90.2	90.2	90.2	90.2	90.2
L	97.8	98.0	98.3	99.7	99.7	100.5	99.3	97.8	95.7	95.3	95.9	95.6	95.9	95.7	95.9
UK	98.7	98.0	97.3	98.2	98.0	96.8	97.6	97.4	97.0	94.1	92.4	92.4	92.4	92.4	92.4
IRL	103.7	105.4	108.0	106.3	106.8	106.6	108.0	108.7	108.9	106.7	106.7	106.7	106.7	106.7	106.7
DK	100.0	99.3	99.8	100.4	98.6	97.5	100.3	101.5	99.6	98.9	99.7	99.5	101.1	100.1	99.2

ABHAENIG BESCHAEFFTIGTE

NUMBER OF EMPLOYEES

NOMBRE DE SALARIES

1975 = 100

	1977	1978	1979	1978		1979				1980		1980					
				III.	IV.	I.	II.	III.	IV.	I.	II.	MAI	JUN	JUL	AUG		
ENERGIE																	
ENERGY																	
ENERGIE																	
EUR9	-	-	-	-	-	-	-	-	-	-	-	-	-	-	-	-	-
D	:	:	:	:	:	:	:	:	:	:	:	:	:	:	:	:	:
F	98.4	97.4	96.9	97.3	97.1	96.9	97.0	97.0	96.6	96.5	96.7	-	-	-	-	-	-
I	102.7	102.3	102.7	102.1	102.2	102.3	102.7	102.8	102.9	102.8	103.1	103.1	103.3	103.6	103.8	103.8	103.8
NL	98.4	98.5	:	:	:	:	:	:	:	:	:	:	:	:	:	:	:
B	91.4	89.2	87.6	88.6	88.6	88.0	87.6	87.4	87.2	86.8	:	:	:	:	:	:	:
L	:	:	:	:	:	:	:	:	:	:	:	:	:	:	:	:	:
UK	98.1	97.3	97.4	97.3	97.0	97.3	97.3	97.7	97.5	97.2	96.8	96.8	96.6	96.7	96.9	96.9	96.9
IRL	-	-	-	-	-	-	-	-	-	-	-	-	-	-	-	-	-
DK	-	-	-	-	-	-	-	-	-	-	-	-	-	-	-	-	-

NACE : 22

ERZEUGUNG U. ERSTE BEARBEITUNG VON METALLEN

PRODN., PRELIMINARY PROCESS. OF METALS

PRODN., PREMIERE TRANSFORMAT. METAUX

EUR9	96.0	92.1	89.6	91.8	91.2	90.4	90.8	89.9	87.3	86.5	85.2	-	-	-	-	-	-
D	94.0	90.3	89.3	90.3	90.0	88.9	88.9	89.7	89.6	89.8	89.2	89.2	89.0	89.1	89.3	89.3	89.3
F	96.1	89.8	84.4	89.3	87.9	86.4	84.9	83.9	82.5	81.3	80.6	-	-	-	-	-	-
I	100.7	99.6	:	99.6	99.2	99.4	100.0	100.2	:	:	:	:	:	:	:	:	:
NL	95.7	91.2	89.7	91.0	91.0	90.0	89.0	90.0	90.0	:	:	-	-	-	-	-	-
B	89.9	82.3	85.4	81.7	81.5	82.1	97.2	80.7	81.7	81.0	:	-	-	-	-	-	-
L	91.4	83.8	80.4	83.9	82.4	81.7	80.4	79.5	79.8	77.8	77.3	77.5	76.4	76.2	75.9	75.9	75.9
UK	97.1	93.0	89.4	92.4	91.7	90.5	89.6	89.2	88.4	87.3	83.6	83.6	81.7	79.8	78.7	78.7	78.7
IRL	85.7	62.1	67.9	62.9	62.9	65.7	65.7	66.6	71.4	71.4	:	-	-	-	-	-	-
DK	112.9	116.5	117.7	118.0	117.3	116.7	116.0	118.7	119.3	118.0	114.0	114.0	112.0	110.0	108.0	108.0	108.0

NACE : 24

BE- U. VERARBEITUNG VON STEINEN U. ERDEN

NON-METALLIC MINERAL PRODUCTS

PRODUITS MINERAUX NON-METALLIQUES

EUR9	94.6	93.6	92.8	94.2	93.6	91.9	93.2	93.5	92.5	90.4	91.4	-	-	-	-	-	-
D	91.9	91.0	91.5	92.2	91.7	88.4	91.7	93.3	92.7	90.2	92.5	92.5	92.8	93.2	93.4	93.4	93.4
F	96.6	93.6	91.3	93.4	92.9	92.0	91.9	91.0	90.4	90.4	91.0	-	-	-	-	-	-
I	:	:	:	:	:	:	:	:	:	:	:	:	:	:	:	:	:
NL	94.2	94.0	93.0	94.2	93.2	93.2	93.2	93.2	92.2	:	:	-	-	-	-	-	-
B	91.9	87.4	85.9	88.2	85.8	86.5	87.3	85.9	83.9	83.9	:	-	-	-	-	-	-
L	95.8	98.8	102.7	101.3	102.7	105.5	105.1	101.8	98.5	97.7	99.0	99.0	99.0	98.3	97.8	97.8	97.8
UK	97.0	97.2	95.6	97.6	97.4	96.2	96.0	96.2	94.2	90.9	89.3	89.3	88.7	88.0	87.3	87.3	87.3
IRL	106.5	112.2	115.5	113.7	112.2	114.5	116.0	116.0	115.3	114.5	:	-	-	-	-	-	-
DK	106.8	106.3	110.6	108.6	108.0	105.8	110.5	113.8	112.2	103.5	102.8	103.1	102.6	101.8	100.0	100.0	100.0

NACE 25 + 26

CHEMISCHE IND. + L'HEMIEFASERIND.

CHEMICAL IND. INCL. MAN-MADE FIBRES IND.

IND. CHIMIQUE + PROD. DE FIBRES ARTIF. ET SYNTH.

EUR9	97.4	96.3	95.3	96.5	96.1	95.3	95.3	95.5	95.2	95.2	94.9	-	-	-	-	-	-
D	97.8	97.0	95.9	97.2	97.0	95.3	95.4	96.5	96.5	97.1	97.1	97.0	97.2	97.5	97.7	97.7	97.7
F	96.4	95.7	93.9	95.8	94.9	94.5	94.3	93.7	93.0	93.0	93.4	-	-	-	-	-	-
I	95.0	91.7	90.1	91.4	90.7	90.5	90.4	90.1	89.4	88.3	87.8	87.8	87.6	87.4	87.3	87.3	87.3
NL	97.2	95.2	93.2	95.2	94.2	94.2	93.2	93.2	92.2	:	:	-	-	-	-	-	-
B	98.2	95.4	94.9	94.8	95.4	94.9	95.1	95.0	94.7	94.5	:	-	-	-	-	-	-
L	83.3	77.7	:	79.0	75.3	:	:	:	:	:	:	-	-	-	-	-	-
UK	99.4	99.6	99.7	100.2	100.0	99.4	99.6	99.9	99.7	98.9	97.6	97.8	97.3	97.0	96.4	96.4	96.4
IRL	112.1	120.3	124.4	122.0	124.2	127.5	129.7	129.7	130.8	133.0	:	-	-	-	-	-	-
DK	98.9	99.2	102.6	99.5	99.8	101.1	102.1	103.4	104.1	104.6	105.5	104.8	105.8	105.8	105.3	105.3	105.3

Afhængig Beschäftigte

NUMBER OF EMPLOYEES

NOMBRE DE SALARIES

1975 = 100

	1977	1978	1979	1978		1979					1980		1980			
				III.	IV.	I.	II.	III.	IV.	I.	II.	Mai	JUN	JUL	AUG	
NACE : 31/36																
METALLVERARBEITENDE INDUSTRIE				ENGINEERING AND ALLIED INDUSTRIES								INDUSTRIES TRANSFORMATRICES DES METAUX				
EUR9	96.2	97.7	97.3	97.8	97.7	97.2	97.1	97.4	97.4	97.0	96.6	-	-	-	-	
D	98.2	98.1	98.8	98.3	98.6	98.1	98.0	99.1	99.8	99.8	99.7	99.7	99.8	100.2	100.2	
F	98.8	97.0	95.5	96.9	96.6	95.9	95.7	95.3	95.1	94.8	94.8	-	-	-	-	
I	98.8	98.5	99.8	98.6	98.7	99.2	99.8	100.1	100.0	99.6	99.5	99.8	99.8	99.3	99.1	
NL	93.2	90.5	89.0	90.0	91.0	89.0	89.0	89.0	89.0	89.0	1	-	-	-	-	
B	95.1	93.0	93.1	92.6	92.1	91.7	92.7	93.7	94.3	93.5	1	-	-	-	-	
L	100.8	97.1	95.5	96.7	95.9	94.7	94.5	95.5	97.5	98.4	100.0	100.1	100.4	100.8	100.2	
UK	98.6	98.7	96.9	98.9	98.4	97.5	96.9	97.0	96.1	93.7	92.4	92.4	91.8	91.1	90.0	
IRL	113.2	118.6	127.5	119.0	122.0	122.7	125.5	128.5	133.2	132.7	1	-	-	-	-	
DK	99.3	99.4	99.9	100.2	99.7	98.9	99.7	100.1	101.0	103.2	100.8	100.4	101.1	100.2	100.3	

NACE : 32

	MASCHINENBAU										MECHANICAL ENGINEERING				CONSTRN.,MACHINES,MATERIEL MECANIQUE			
EUR9	96.7	95.7	94.8	95.7	95.5	95.1	94.6	94.8	94.7	94.2	94.1	-	-	-	-			
D	95.0	93.7	94.2	93.8	93.8	94.0	93.5	94.3	95.0	94.8	94.7	94.7	94.7	95.1	95.6			
F	97.1	94.6	95.2	94.7	94.0	93.4	93.3	93.0	93.1	93.2	93.2	-	-	-	-			
I	97.4	96.1	96.1	96.1	95.7	95.5	95.8	95.9	1	1	1	1	1	1	1			
NL	93.5	91.0	89.8	90.8	90.8	89.8	89.8	89.8	89.8	89.8	1	-	-	-	-			
B	91.2	88.6	84.6	88.3	87.4	84.7	85.3	84.0	84.4	83.5	1	-	-	-	-			
L	94.9	95.9	96.7	96.5	97.8	96.7	96.2	95.2	96.6	97.4	48.8	98.7	99.1	98.7	98.1			
UK	98.8	98.6	96.0	98.5	98.2	97.2	96.0	95.8	95.0	93.1	92.3	92.4	91.7	91.1	89.8			
IRL	125.0	134.7	143.1	133.3	140.7	140.7	142.6	142.6	146.3	146.3	1	-	-	-	-			
DK	104.2	102.8	105.7	103.1	103.8	103.8	105.1	106.0	108.0	108.9	109.4	109.4	109.4	108.7	108.9			

NACE : 33

	BAU VON KRAFTWAGEN U. UEREN EINZELTEILEN			MOTOR VEHICLES,PARTS AND ACCESSORIES								CONSTRN.,AUTOMOBILES ET PIECES DETACHEES			
EUR9	107.2	109.2	109.5	109.5	109.4	108.9	109.2	110.1	109.8	108.4	107.1	-	-	-	-
D	109.6	113.5	116.6	114.0	114.8	114.8	115.5	117.6	118.4	119.1	119.1	119.0	119.4	120.0	118.8
F	104.9	105.6	104.1	105.7	105.0	104.4	104.4	103.6	103.5	102.4	102.2	-	-	-	-
I	1	1	1	1	1	1	1	1	1	1	1	1	1	1	1
NL	1	1	1	1	1	1	1	1	1	1	1	-	-	-	-
B	111.8	113.3	117.6	112.3	113.1	115.8	115.8	118.7	120.0	119.2	1	-	-	-	-
L	105.0	105.4	102.7	105.5	104.2	102.9	103.2	103.3	101.3	97.0	94.0	94.1	93.1	91.5	90.0
UK	105.0	105.4	102.7	105.5	104.2	102.9	103.2	103.3	101.3	97.0	94.0	94.1	93.1	91.5	90.0
IRL	100.4	98.8	98.8	101.6	95.2	96.8	98.4	96.8	103.2	100.0	1	-	-	-	-
DK	119.0	119.9	127.1	122.5	120.6	120.6	127.0	128.9	131.7	144.7	138.2	139.1	139.1	130.8	128.0

NACE : 36

	FAHRZEUGBAU (OHNE BAU VON KRAFTWAGEN)			MEANS OF TRANSPORT (EXCL.MOTOR VEHICLES)								CONSTRN.,M.T. TRANSPORT (SAUF AUTOMOB.)			
EUR9	96.2	94.3	93.1	94.5	94.4	93.3	93.1	93.3	92.8	92.1	91.8	-	-	-	-
D	94.7	91.5	91.0	93.2	94.0	90.4	90.4	90.9	92.5	92.7	92.7	92.8	93.1	92.6	93.3
F	95.7	92.5	91.3	92.5	91.7	91.4	91.5	91.4	90.7	91.0	91.7	-	-	-	-
I	1	1	1	1	1	1	1	1	1	1	1	1	1	1	1
NL	94.7	90.2	87.5	90.2	89.2	88.2	88.2	87.2	86.2	86.2	1	-	-	-	-
B	91.6	87.6	92.9	86.8	86.0	88.7	92.6	95.0	95.4	96.7	1	-	-	-	-
L	97.5	97.6	97.0	98.1	98.2	97.5	97.0	97.4	96.1	93.5	92.9	93.1	92.5	92.2	92.5
UK	96.8	94.8	91.9	93.5	95.2	93.5	91.9	90.3	91.9	91.4	1	-	-	-	-
IRL	83.1	78.9	73.6	80.0	76.7	76.1	74.0	72.1	72.5	73.6	71.8	71.7	73.2	73.6	75.2

ABHÄNGIG BESCHÄFTIGTE

NUMBER OF EMPLOYEES

NOMBRE DE SALARIÉS

1975 = 100

1977	1978	1979	1978		1979				1980		1980			
			III.	IV.	I.	II.	III.	IV.	I.	II.	MAI	JUN	JUL	AUG

NACE : 41/42

NAHRUNGS- UND GENUSSMITTELGEWERBE

FOOD, DRINK AND TOBACCO INDUSTRY

IND. DE L'ALIMENTATION, BOISSONS, TABAC

EUR9	96.2	95.3	94.5	96.6	95.2	93.3	94.5	95.8	94.5	92.7	93.3	-	-	-	-
D	94.1	93.2	92.8	94.5	94.0	91.6	91.6	94.2	93.8	92.1	92.1	91.9	92.6	93.7	94.4
F	96.6	95.3	94.3	97.0	94.5	93.4	95.4	95.6	92.7	91.6	93.4	-	-	-	-
I	:	:	:	:	:	:	:	:	:	:	:	:	:	:	:
NL	95.2	93.5	92.2	95.0	93.0	92.0	92.0	93.0	92.0	:	:	-	-	-	-
B	91.6	89.6	88.7	90.1	89.4	88.2	89.0	89.8	87.8	86.8	:	-	-	-	-
L	96.4	90.4	88.0	92.0	88.5	87.7	87.8	89.3	87.2	88.0	88.9	88.5	89.0	89.8	90.4
UK	99.3	98.5	97.5	99.3	98.4	96.0	97.6	98.6	97.9	94.3	93.4	93.2	93.8	94.6	94.1
IRL	98.0	100.2	102.0	102.0	102.0	99.8	102.0	103.6	102.9	100.9	:	-	-	-	-
DK	99.9	100.8	101.5	103.9	100.6	97.4	103.3	105.1	100.0	100.0	103.6	103.3	106.6	106.2	104.4

NACE : 43

TEXTILINDUSTRIE

TEXTILE INDUSTRY

INDUSTRIE TEXTILE

EUR9	94.1	89.9	87.2	89.3	88.8	88.0	87.6	87.1	86.2	85.3	84.8	-	-	-	-
D	93.0	89.6	87.1	89.1	88.9	87.6	86.9	86.6	87.0	86.3	85.4	85.4	85.1	84.8	84.7
F	95.2	92.0	90.4	91.9	91.0	90.7	90.9	90.1	89.8	89.6	89.0	-	-	-	-
I	92.7	88.0	85.2	87.5	86.7	86.1	85.5	85.0	84.1	83.8	83.2	83.1	83.1	82.9	82.6
NL	84.0	73.5	67.2	73.0	70.0	68.0	68.0	67.0	66.0	:	:	-	-	-	-
B	86.3	77.6	75.0	76.2	75.7	74.0	74.4	77.9	73.7	73.9	:	-	-	-	-
L	-	-	-	-	-	-	-	-	-	-	-	-	-	-	-
UK	98.0	94.6	91.1	94.0	93.6	92.7	92.0	90.8	88.9	85.4	82.5	82.5	81.7	80.4	78.9
IRL	110.1	108.7	113.9	107.8	110.8	112.0	113.9	113.9	115.7	110.2	:	-	-	-	-
DK	97.2	89.6	94.4	87.8	88.7	93.2	93.4	94.9	96.3	85.7	89.9	89.4	89.4	88.7	86.6

NACE : 45

SCHUH- UND BEKLEIDUNGSGEWERBE

FOOTWEAR AND CLOTHING INDUSTRY

IND. DE LA CHAUSSURE ET DE L'HABILLEMENT

EUR9	-	-	-	-	-	-	-	-	-	-	-	-	-	-	-
D	92.1	90.5	90.0	90.0	90.6	90.5	89.5	89.8	90.2	89.2	87.6	87.6	87.0	86.6	87.1
F	99.5	98.1	99.0	98.4	98.3	98.8	99.1	99.2	98.6	98.0	97.5	-	-	-	-
I	:	:	:	:	:	:	:	:	:	:	:	:	:	:	:
NL	81.5	75.7	72.7	75.0	75.0	73.0	73.0	73.0	72.0	:	:	-	-	-	-
B	79.6	72.3	70.0	71.9	69.6	71.1	70.4	70.0	68.5	67.7	:	-	-	-	-
L	80.7	77.2	:	76.4	76.9	:	:	:	:	:	:	-	-	-	-
UK	97.0	95.5	95.7	95.1	95.6	95.2	96.4	96.3	94.7	91.2	88.8	88.5	88.2	87.5	86.3
IRL	97.2	97.0	99.6	97.0	97.5	100.0	100.0	99.5	99.0	97.5	:	-	-	-	-
DK	100.3	93.4	92.9	91.8	92.2	92.9	92.2	92.9	93.5	90.6	88.9	88.3	88.3	87.8	88.9

**Salgs- og abonnementskontorer · Vertriebsbüros · Sales Offices
Bureaux de vente · Uffici di vendita · Verkoopkantoren**

Belgique - België

Moniteur belge - Belgisch Staatsblad
Rue de Louvain 40-42 -
Leuvenestraat 40-42
1000 Bruxelles - 1000 Brussel
Tél. 512 00 26
CCP 000-2005502-27
Postrekening 000-2005502-27

Sous-dépôts - Agentschappen:
Librairie européenne - Europese
Boekhandel
Rue de la Loi 244 - Wetstraat 244
1040 Bruxelles - 1040 Brussel

CREDOC

Rue de la Montagne 34 - Bte 11 -
Bergstraat 34 - Bus 11
1000 Bruxelles - 1000 Brussel

Danmark

J.H. Schultz - Boghandel
Møntergade 19
1116 København K
Tlf. (01) 14 11 95
Girokonto 200 1195

Underagentur:

Europa Bøger
Gammel Torv 6
Postbox 137
1004 København K
Tlf. (01) 15 62 73
Telex: 19280 euroin dk

BR Deutschland

Verlag Bundesanzeiger
Breite Straße - Postfach 10 80 06
5000 Köln 1
Tel. (0221) 21 03 48
(Fernschreiber: Anzeiger Bonn
8 882 595)
Postscheckkonto 834 00 Köln

France

Service de vente en France des publica-
tions des Communautés européennes
Journal officiel
26, rue Desaix
75732 Paris Cedex 15
Tél. (1) 578 61 39 - CCP Paris 23-96

« Service de documentation »

D.E.P.P.
Maison de l'Europe
37, rue des Francs-Bourgeois
75004 Paris
Tél. 887 96 50

Ireland

Government Publications
Sales Office
G.P.O. Arcade
Dublin 1

or by post from

Stationery Office
Dublin 4
Tel. 78 96 44

Italia

Libreria dello Stato
Piazza G. Verdi 10
00198 Roma - Tel. (6) 8508
Telex 62008
CCP 387001

**Grand-Duché
de Luxembourg**

*Office des publications officielles
des Communautés européennes*
5, rue du Commerce
Boîte postale 1003 - Luxembourg
Tél. 49 00 81 - CCP 19190-81
Compte courant bancaire:
BIL 8-109/6003/300

Nederland

Staatsdrukkerij- en uitgeverijbedrijf
Christoffel Plantijnstraat, 's-Gravenhage
Postbus 20014
2500EA 's-Gravenhage
Tel. (070) 78.99.11
Postgiro 42 53 00

United Kingdom

H.M. Stationery Office
P.O. Box 569
London SE1 9NH
Tel. (01) 928 89 77, ext. 365
National Giro Account 582-1002

United States of America

*European Community Information
Service*
2100 M Street, N.W.
Suite 707
Washington, D.C. 20 037
Tel. (202) 862 95 00

Schweiz - Suisse - Svizzera

Librairie Peyot
6, rue Grenus
1211 Genève
Tél. 31 89 50
CCP 12-236 Genève

Sverige

Librairie C.E. Fritze
2, Fredsgatan
Stockholm 16
Postgiro 193, Bankgiro 73/4015

España

Librens Mundi-Pransa
Castelló 37
Madrid 1
Tel. 275 46 55

Andra lande · Andere Länder · Other countries · Autres pays · Altri paesi · Andere landen

Kontoret for De europæiske Fællesskabers officielle Publikationer · Amt für amtliche Veröffentlichungen der Europäischen Gemeinschaften · Office for
Official Publications of the European Communities · Office des publications officielles des Communautés européennes · Ufficio delle pubblicazioni
ufficiali della Comunità europea · Bureau voor officiële publicaties der Europese Gemeenschappen

Luxembourg 5, rue du Commerce Boîte postale 1003 Tél. 49 00 81 · CCP 19 190-81 Compte courant bancaire BIL 8-109/6003/300

Pris pr. hæfte DKR 9
Einzelpreis DM 3,10
Single copy UKL 0.75/IRL 0.85/USD 1.70
Prix par numéro FF 7,30/BFR 50
Prezzo unitario LIT 1 400
Prijs per nummer HFL 3,50/BFR 50

Abonnement 1980 DKR 90
Abonnement 1980 DM 31,20
Subscription 1980 UKL 7.60/IRL 8.30/USD 17
Abonnement 1980 FF 73/BFR 500
Abbonamento 1980 LIT 14 000
Abonnement 1980 HFL 34,25/BFR 500



KONTORET FOR DE EUROPÆISKE FÆLLESSKABERS OFFICIELLE PUBLIKATIONER
AMT FÜR AMTLICHE VERÖFFENTLICHUNGEN DER EUROPÄISCHEN GEMEINSCHAFTEN
OFFICE FOR OFFICIAL PUBLICATIONS OF THE EUROPEAN COMMUNITIES
OFFICE DES PUBLICATIONS OFFICIELLES DES COMMUNAUTÉS EUROPÉENNES
UFFICIO DELLE PUBBLICAZIONI UFFICIALI DELLE COMUNITÀ EUROPEE
BUREAU VOOR OFFICIËLE PUBLIKATIES DER EUROPESE GEMEENSCHAPPEN

ISSN 0378-7877