

EU TRANSPORTS IN FIGURES

STATISTICAL POCKETBOOK

EUROPEAN
COMMISSION



2ND ISSUE 1997



DG VII

**EU-
TRANSPORT IN FIGURES**

STATISTICAL POCKET BOOK

2nd ISSUE 1997

A great deal of additional information on the European Union is available on the Internet. It can be accessed through the Europa server (<http://europa.eu.int>)

Cataloguing data can be found at the end of this publication

Luxembourg: Office for Official Publications
of the European Communities, 1997

ISBN 92-828-0959-5

© European Communities, 1997

Reproduction is authorized provided the source is acknowledged

Printed in Belgium

Printed on white chlorine-free paper

Preface

The main aim of this pocket book is to provide transport statistics for the EU Member States in a user-friendly way.

Most of the data cover the period 1970-95.

The pocket book was mainly based on Eurostat statistics enhanced with data from other international organisations, from national statistics and, where no data were available, estimates.

Comments and suggestions on the contents of this publication are appreciated and should be sent to the address indicated on the last page.

CONTENTS

	page
General Data	
1.1	Statistical Overview 11
1.2	General Economic Data 12
1.3	External Trade 13
1.4	Population 14
1.5	Infrastructure Investment 15
1.6	Employment by mode 16
1.7	Employment main railways 17
1.8	Transport Growth 18
Infrastructure	
2.1	Motorways 21
2.2	Railways 22
2.3	High Speed Rail Network 23
2.4	Pipelines 24
2.5	Inland Waterways 25
2.6	Railway network, Evolution 1970-95 26
Means of Transport	
3.1	Road Private Cars, Motorization 29
3.2	Road Buses and Coaches 32
3.3	Road Goods Vehicles 33
3.4	Rail Passenger Transport 34
3.5	Rail Goods Transport 35
3.6	Sea EU Merchant Fleet 36
Goods Transport	
4.1	Overview, Evolution 1970-95 38
4.2	Transport distances 40
4.3	Modal Split by country 41
4.4	Road tkm 42
4.5	Railways tkm 43
4.6	Inland Waterways tkm 44
4.7	Pipelines tkm 45
4.8	Sea port traffic 46
4.9	Air airport traffic 47
4.10	Combined Transport 48
4.11	Alpine Transport 49

	page	
Passenger Transport		
5.1	Overview, Evolution 1970-95	52
5.2	Private Cars	54
5.3	Buses	55
5.4	Railways	56
5.5	Air Traffic	57
5.6	Airports	58
5.7 a	Airlines European Traffic	59
5.7 b	Airlines Worldwide Traffic	60
Safety		
6.1	Fatalities Road	62
6.2	Fatalities Railways	63
6.3	Traffic Safety Road/Rail	64
Environment		
7.1	Emission standards	66
7.2	Road : Carbon Dioxide emissions	67
7.3	Road : CO and VOCs emissions	68
7.4	Road : Lead and Particulate Matter	69
7.5	Road : NOx emissions	70
Central and Eastern European Countries		
8.1	Goods transport, Overview	73
8.2	Road tkm	74
8.3	Railways tkm	75
8.4	Inland waterways tkm	76
8.5	Pipelines tkm	77
8.6	Railways pkm	78
8.7	Private Cars	79
8.8	Airports	80
8.9	External Trade	81
8.10	Comparison CEC-MED countries	82
USA		
9.1	Goods Transport	85
9.2	Passenger Transport	86
World	Comparison EU 15-World	89
Statistical Sources		
1.	International Statistical Publications	93
2.	National Statistical Publications	94

SYMBOLS AND ABBREVIATIONS

%	per cent
-	nil
:	data not available
0	datum less than half of unit used
1970=100	Reference year
ACI	Airports Council International
AEA	Association of European Airlines
BECU	billion European Currency Units
CEC	Central and Eastern European Countries
ECIS	European Centre for Infrastructure Studies
dwt	Dead weight ton
ECMT	European Conference of Ministers of Transport
ECU	European Currency Units
EU	European Union
EU15	European Union of 15 Member States
EUROSTAT	Statistical Office of the European Communities
GDP	Gross Domestic Product
GVF	Dienst für Gesamtverkehrsfragen (Schweiz)
gt	gross tonnage
IACA	International Air Charter Association
IMF	International Monetary Fund
IRF	International Road Federation
ISL	Institute of Shipping Economics and Logistics
MECU	million European Currency Units (ECU)
mio p	million persons
MS	Member States
pkm	Passenger-kilometre : unit of measure which
PPS	Purchasing Power Standard
tkm	tonne-kilometre
UIC	Union Internationale des Chemins de fer
UN	United Nations
UIRR	Union Internationale des Societes de Transport Combiné Rail-Route
VOCs	volatile organic compounds

SYMBOLS AND ABBREVIATIONS

countries

A	Austria
B	Belgium
D	Germany
D-W	Germany-West
D-E	Germany-East
DK	Denmark
E	Spain
F	France
FIN	Finland
GR	Greece
I	Italy
IRL	Ireland
L	Luxembourg
NL	Netherlands
P	Portugal
S	Sweden
UK	United Kingdom
BG	Bulgaria
CS	Czechoslovakia
CZ	Czech Republic
EST	Estonia
H	Hungary
LT	Lithuania
LV	Latvia
PL	Poland
RO	Romania
SLO	Slovenia
SK	Slovak Republic
USA	United States of America

Chapter 1

General Data

Statistical Overview EU Transport

data for 1995, otherwise indicated

Value created	Total GDP is 6440 BECU or 17 300 ECU per person of which transport 4% = 260 BECU incl. private/ own account 7,5% = 480 BECU = 1 300 ECU per person
Employment	6,2 million persons are employed in the transport sector, = 4,2 % of all persons employed
Investment in transport infrastructure	Investment in transport infrastructure was 68 BECU in 93 (of which 65% road, 25% rail and 10% other modes) or 1,2% of GDP
Goods transport (4 modes: road, rail, pipelines, incl. waterways)	Transport demand is 1500 billion tkm (incl. intra-EU sea transport 1900 bio tkm) or 4000 (5000) tkm per person (11 tkm per person and day) - of which road 72% (road: 58% if short sea shipping included)
Passenger transport (4 modes: car, bus, rail, air)	Transport demand is ca. 4500 billion pkm or 12 000 pkm per person (33 pkm per person and day) - of which road: 90 %, private car: 80 %
Transport Growth	<u>Goods transport</u> : ca. 2 % per year (over 70 % growth since 1970) <u>Passenger transport</u> : ca. 3% per year (over 110 % growth since 1970)
External Costs	External costs of transport (estimate , in % of GDP) : air pollution: 0,4% noise: 0,2% accidents: 1,5% congestion: 2% total: 4% = 260 BECU or 700 ECU per person
Safety	<u>Road</u> : ca. 44 000 persons killed (fatalities decreasing by 2- 3% per year) <u>Rail</u> : ca.1 000 persons killed (fatalities slightly decreasing)
Environment	Share of transport in man made emissions: CO ₂ : 26% NO _x : 58%

General Economic Data

1.2

	B	D	DK	E	F	GR	I	IRL	L	NL	P	UK	A	FIN	S	EU15
GDP (nominal) 1996, BECU	208	1853	137	460	1215	97	956	56	13	309	82	899	180	97	199	6761
GDP per head in PPS (EU=100), 1981-90	104	116	109	71	111	61	103	66	140	102	56	100	106	102	112	100
GDP per head in PPS (EU=100), 1991	107	106	109	79	113	61	107	76	151	102	63	97	108	94	104	100
GDP per head in PPS (EU=100), 1996	112	110	116	77	107	66	104	98	166	107	68	96	110	98	100	100
GDP growth 1995 %	1.9	1.9	2.8	2.8	2.2	2.4	3.0	10.7	3.4	2.1	2.3	2.5	1.8	4.5	3.0	2.5
GDP growth 1996%	1.4	1.4	2.1	2.1	1.1	2.4	0.8	7.8	2.3	2.5	2.5	2.3	1.0	2.3	1.7	1.6
Industrial prod. growth 95 %	4.2	0.2	4.3	4.7	1.5	2.3	5.5	18.8	0.8	2.3	4.6	2.5	5.4	7.5	10.6	3.0
Industrial prod. growth 96 %	0.3	0.1	1.7	-1.0	0.7	1.7	0.9	10.0	-1.4	2.5	2.0	1.3	2.0	3.2	2.5	0.9
Industr. production as % of GDP in 1993	29.2	34.5	26.7	33.3	28.2	25.8	31.7	37.4	31.0	28.5	33.6	31.1	39.0	31.1	39.6	31.9
Unemployment rate 1996	9.8	9.0	6.0	22.3	12.3	9.0	12.0	12.3	3.1	6.6	7.3	8.2	4.1	15.7	10.0	11.1

Source : DG II, Eurostat

PPS= Purchasing Power Standard

External Trade EU 15 in BECU

1996

1.3

	EXPORTS to								IMPORTS from							
	total exports	EU 15	PECO	Mediterr. count.	USA	total Imports	EU 15	PECO	Mediterr. count.	USA						
B + L	137.4	105.2 77%	2.7 2%	5.3 4%	5.8 4%	127.3	92.3 73%	1.6 1%	2.8 2%	8.7 7%						
D	404.2	228.0 56%	29.1 7%	18.7 4%	31.5 8%	350.3	206.8 59%	23.3 7%	12.5 4%	20.5 6%						
DK	39.0	26.0 67%	1.4 4%	0.7 2%	1.6 4%	34.3	24.1 70%	1.0 3%	0.3 1%	1.6 5%						
E	80.8	54.0 67%	1.4 2%	4.3 5%	3.3 4%	89.7	60.9 68%	0.9 1%	3.5 4%	5.0 6%						
F	238.1	148.0 62%	5.2 2%	13.0 5%	14.6 6%	227.4	153.7 68%	3.4 1%	8.6 4%	15.2 7%						
GR	10.3	4.7 45%	1.6 16%	2.5 25%	0.4 4%	18.2	10.5 58%	0.9 5%	1.3 7%	0.8 4%						
I	197.8	109.2 55%	11.5 6%	15.6 8%	14.4 7%	183.1	99.3 61%	8.7 4%	11.0 7%	8.0 5%						
IRL	37.3	26.4 71%	0.4 1%	0.6 1%	3.5 9%	26.6	17.6 66%	0.2 1%	0.2 1%	3.9 15%						
NL	160.4	129.3 81%	3.2 2%	3.4 2%	5.0 3%	150.2	92.0 61%	2.6 2%	2.7 2%	12.6 8%						
P	18.8	15.0 80%	0.1 1%	0.3 2%	0.9 5%	26.9	20.4 76%	0.1 1%	0.8 2%	0.9 3%						
UK	202.8	118.2 58%	3.7 2%	6.3 3%	22.4 11%	230.2	126.4 55%	3.0 1%	4.0 2%	29.0 13%						
A	40.7	29.4 72%	4.1 10%	1.5 4%	1.0 2%	49.6	39.8 80%	3.0 6%	1.0 2%	1.3 3%						
FIN	32.3	17.6 54%	2.2 7%	0.6 2%	2.6 8%	24.6	16.1 65%	0.8 3%	0.1 0%	1.4 6%						
S	67.1	36.4 57%	2.3 3%	1.6 2%	5.5 8%	51.8	35.3 68%	1.3 3%	0.3 1%	3.4 7%						
EU15	1686.9	1049.4 63%	68.8 4%	72.4 4%	112.5 7%	1570.1	995.1 63%	48.7 3%	48.9 3%	112.2 7%						

Source : EUROSTAT

PECO= Central and Eastern European Countries

data for Greece extrapolated from January-September results

Mediterr. Countries= Gibraltar, Malta, ex Yugoslavia, Turkey, Albania, Canary Islands, Morocco,

Algeria, Tunisia, Libya, Egypt, Cyprus, Lebanon, Syria, Israel and Jordan

Population																	million	average	1.4
	B	D(-W)	D-E	DK	E	F	GR	I	IRL	L	NL	P	UK	A	FIN	S	EU15		
1970	9.6	60.7	17.1	4.9	33.8	50.8	8.8	53.8	3.0	0.3	13.0	8.7	55.6	7.5	4.6	8.0	340.2		
1975	9.8	61.8	16.9	5.1	35.5	52.7	9.0	55.4	3.2	0.4	13.7	9.1	56.2	7.6	4.7	8.2	349.3		
1980	9.8	61.5	16.7	5.1	37.4	53.9	9.6	56.4	3.4	0.4	14.2	9.8	56.3	7.5	4.8	8.3	355.2		
1985	9.9	61.0	16.6	5.1	38.6	55.2	9.9	56.7	3.5	0.4	14.5	9.9	56.6	7.6	4.9	8.4	358.7		
1990	10.0	63.3	16.1	5.1	39.0	56.7	10.1	56.7	3.5	0.4	15.0	9.9	57.4	7.7	5.0	8.6	364.4		
1991	10.0	64.1	15.9	5.2	39.0	57.1	10.3	56.8	3.5	0.4	15.1	9.9	57.8	7.8	5.0	8.6	366.4		
1992	10.0	64.9	15.7	5.2	39.1	57.4	10.3	56.9	3.5	0.4	15.2	9.9	58.0	7.9	5.0	8.7	368.0		
1993	10.1	65.5	15.6	5.2	39.1	57.7	10.4	57.1	3.6	0.4	15.3	9.9	58.0	8.0	5.1	8.7	369.6		
1994	10.1	81.4	D	5.2	39.1	57.9	10.4	57.2	3.6	0.4	15.4	9.9	58.4	8.0	5.1	8.8	371.0		
1995	10.1	81.7	D	5.2	39.2	58.1	10.5	57.3	3.6	0.4	15.5	9.9	58.6	8.0	5.1	8.8	372.1		

Source : EUROSTAT

D included in D(-W)

Transport infrastructure investment

million ECU

1994 prices

1.5

	B	D(-W)	DK	E	F	GR*	I	IRL	L	NL	P	UK	A	FIN	S	EU15	1985= 100
1985	2 195	13 772	571	2 141	9 519		7 210	246	88	1 876	304	4 727	1 941	806	941	46 337	100
1986	2 085	14 293	534	2 091	9 835		7 475	240	87	1 693	373	4 704	1 926	851	889	47 076	102
1987	1 718	14 079	538	2 532	9 956		9 115	200	108	1 849	437	5 308	1 588	923	961	49 312	106
1988	1 807	13 755	657	3 709	10 903		9 873	201	114	1 796	538	6 175	1 638	879	1 068	53 113	115
1989	1 427	13 819	790	4 517	10 972		9 752	249	122	1 932	629	7 339	1 673	951	1 257	55 429	120
1990	1 369	14 014	768	5 938	12 321		10 087	308	113	2 150	871	8 544	1 977	1 030	1 389	60 879	131
1991	1 559	20 397	823	6 271	13 490		9 931	343	161	2 179	1 005	8 186	1 795	1 044	1 160	68 344	147
1992	1 826	21 186	1 088	5 631	13 591		10 232	368	182	2 194	854	8 372	1 675	1 007	1 416	69 622	150
1993	2 063	20 489	923	5 651	13 428		8 938	465	177	2 309	975	8 027	1 766	880	1 787	67 878	146
1994	1 970	20 958	800	5 552	12 812		8 500	500	158	2 400	1 203	7 511	1 591	887	2 125	66 967	145

Source : ECIS

* no data available for Greece and Eastern Germany

investments as % of GDP:

1994	1.0	1.2	0.7	1.4	1.1		1.0	1.1	1.3	0.9	1.7	0.9	1.0	1.1	1.3	1.1
-------------	-----	-----	-----	-----	-----	--	-----	-----	-----	-----	-----	-----	-----	-----	-----	-----

estimates in italic

Employment by mode of transport		1000 persons				1994	1.6
	Railways	Other land transp. incl. pipelines	Water transport (sea + inland water)	Air transport	Auxiliary transport activities	Transport total	Share in total employment %
B	42.7	79.5	8.7	12.3	37.8	181.0	4.8%
D	327.1	443.6	35.0	58.1	658.0	1621.8	4.2%
DK	25.0	39.5	13.9	8.8	31.7	118.9	4.7%
E	41.1	364.5	14.1	29.1	79.4	628.2	4.5%
F	185.7	451.4	8.0	58.5	212.2	916.8	4.2%
GR	12.0	95.8	38.9	5.0	47.5	199.2	5.3%
I	140.2	448.6	39.6	33.0	124.2	786.6	3.9%
IRL	11.2	16.3	2.6	5.0	4.3	39.4	3.3%
L	3.3	2.2	0.1	1.4	0.4	7.4	4.5%
NL	26.6	175.9	13.5	27.9	63.5	307.4	4.6%
P	14.3	72.5	8.3	17.3	39.4	161.8	3.4%
UK	131.3	422.7	27.3	70.6	280.5	932.4	3.6%
A	62.3	94.6	1.2	4.3	26.8	189.2	5.1%
FIN	17.4	58.0	10.7	5.2	19.3	110.6	5.4%
S	21.9	95.1	13.0	10.0	33.9	173.9	4.4%
EU15	1062.1	2860.2	234.9	348.6	1668.9	6162.6	4.2%

Source : EUROSTAT (employment according to NACE classification)
UK, A, S: data for 1995

Employment

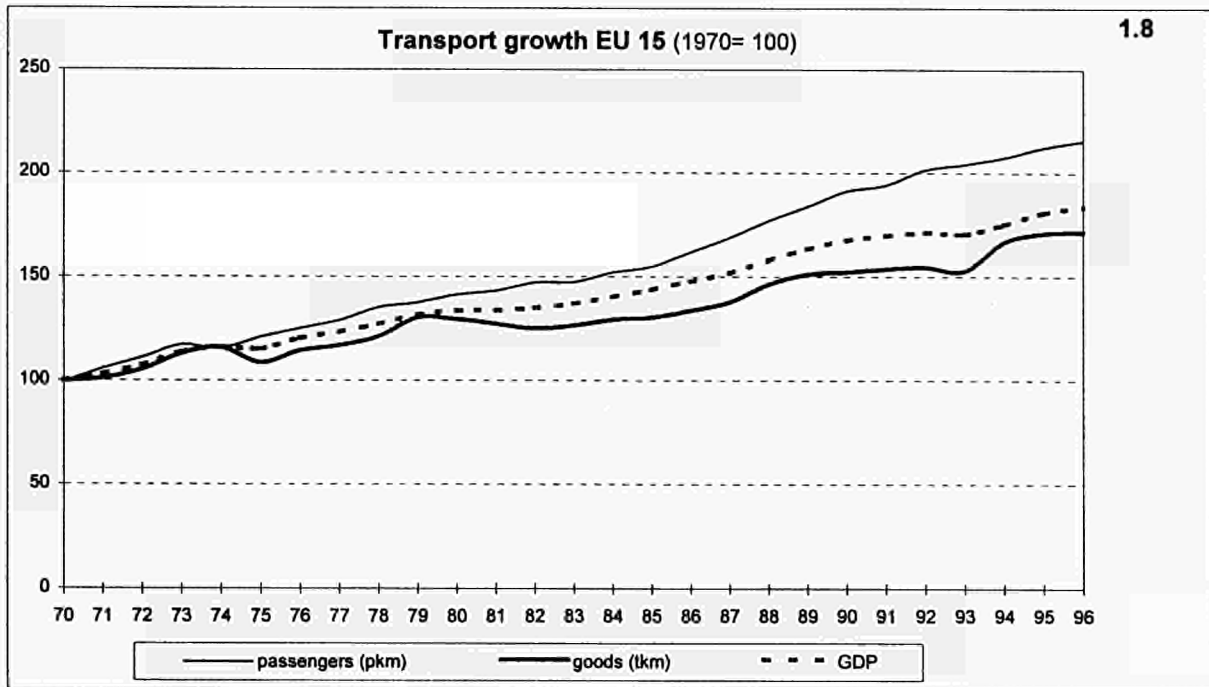
Main railways staff in 1000

company	1970	1980	1990	1994	1995
<i>B</i> SNCB	56.7	65.7	45.2	42.7	41.9
<i>D-W</i> DB	392.7	329.0	236.0	327.1	294.9
<i>D-E</i> DR	252.6	237.9	246.3	(DB)	(DB)
<i>DK</i> DSB	24.0	22.1	20.4	20.0	15.7
<i>E</i> RENFE	85.1	71.5	49.7	41.1	39.0
<i>F</i> SNCF	303.0	254.4	202.1	185.7	181.1
<i>GR</i> CH	12.6	12.1	13.3	12.0	12.5
<i>I</i> FS	197.6	220.7	200.4	140.2	129.8
<i>IRL</i> CIE	22.3	18.1	11.8	11.2	11.1
<i>L</i> CFL	4.4	4.2	3.5	3.3	3.2
<i>NL</i> NS	26.8	26.9	26.2	26.6	24.5
<i>P</i> CP	25.6	24.7	22.1	14.3	13.1
<i>UK</i> BR (+ Railtrack)*	274.3	241.9	135.3	106.7	101.7
<i>A</i> ÖBB	73.9	72.5	66.9	63.9	61.3
<i>FIN</i> VR	27.7	28.7	20.2	17.4	15.3
<i>S</i> SJ (+ Banverket)*	45.3	37.5	20.8	21.9	21.6
Total	1825	1668	1320	1034	967

*UK (1994): BR: 106.7 Railtrack: 11.3

*S (1994): SJ: 14.6; Banverket: 7.3

D: 1994 creation of DB AG out of former DB and DR



Chapter 2

Infrastructure

Motorways																	km	length at end of year	2.1
	B	D(-W)	D-E	DK	E	F	GR	I	IRL	L	NL	P	UK	A	FIN	S	EU15	index 1970=100	
1970	488	4 461	1 600	184	387	1 553	11	3 907	0	7	1 209	66	1 073	478	108	403	15 935	100	
1975	1 018	6 207	1 600	345	1 135	3 401	91	5 431	0	25	1 530	66	2 026	651	180	692	24 398	153	
1980	1 192	7 538	1 687	516	1 933	5 264	91	5 900	0	44	1 773	132	2 573	938	204	850	30 635	192	
1985	1 456	8 350	1 850	603	3 170	6 150	92	5 955	8	58	1 975	183	2 838	1 261	204	897	35 050	220	
1990	1 666	8 959	1 850	601	5 126	6 824	190	6 193	26	78	2 092	318	3 181	1 470	225	939	39 738	249	
1991	1 650	9 084	1 871	653	5 801	7 080	225	6 301	32	84	2 118	474	3 211	1 532	249	968	41 333	259	
1992	1 658	9 135	1 878	696	6 988	7 408	280	6 940	32	95	2 134	520	3 246	1 554	318	1 005	43 887	275	
1993	1 665	9 185	1 895	737	7 404	7 614	325	7 580	53	100	2 150	579	3 252	1 567	337	1 061	45 504	286	
1994	1 666	11 143	D	786	7 736	7 956	375	8 220	72	121	2 167	587	3 286	1 589	388	1 125	47 217	296	
1995	1 666	11 190	D	830	8 133	8 275	420	8 860	72	123	2 208	687	3 308	1 596	394	1 262	49 024	308	

Source : EUROSTAT , IRF , national statistics

Estimates in italic

D included in D(-W)

Railways length of lines km																	2.2	
	B	D(-W)	D-E	DK	E	F	GR	I	IRL	L	NL	P	UK	A	FIN	S	EU15	index 1970=100
1970	4 232	29 527	14 250	2 352	13 666	36 117	2 571	18 069	2 189	271	3 148	3 591	19 229	5 907	5 870	11 550	170 641	100
1975	3 992	28 813	14 250	1 999	13 497	34 255	2 478	16 077	2 006	275	2 825	3 592	18 144	5 854	5 945	11 366	165 366	97
1980	3 978	28 517	14 248	2 015	13 542	34 382	2 481	16 133	1 987	270	2 760	3 588	18 028	5 847	6 096	11 382	165 234	97
1985	3 712	27 834	14 054	2 471	12 710	34 878	2 461	16 183	1 944	270	2 794	3 607	17 122	5 808	5 900	11 266	162 614	95
1990	3 479	28 950	14 031	2 344	12 580	34 260	2 484	16 086	1 944	271	2 798	3 592	16 924	5 824	5 846	10 801	159 994	94
1991	3 466	27 083	14 030	2 344	12 570	33 990	2 484	16 068	1 944	271	2 780	3 117	16 909	5 823	5 853	10 687	159 217	93
1992	3 432	26 788	14 046	2 344	13 041	33 555	2 484	16 112	1 944	275	2 753	3 054	16 661	5 805	5 853	9 646	167 995	93
1993	3 410	26 367	13 982	2 349	12 601	32 579	2 484	15 942	1 944	275	2 757	3 062	16 534	5 600	5 864	9 476	155 246	91
1994	3 396	41 355	D	2 306	12 646	32 275	2 464	16 002	1 944	275	2 757	2 699	16 538	5 638	5 880	9 661	155 834	91
1995	3 366	41 719	D	2 349	12 280	31 939	2 474	15 998	1 947	275	2 739	2 850	16 564	5 672	5 880	9 782	155 836	91

Source : UIC, data for UIC member railways

D included in D(-W)

High Speed Rail Network

length of lines km

2.3

	B	D(-W)	DK	E	F	GR	I	IRL	L	NL	P	UK	A	FIN	S	EU16
1981	-	-	-	-	301	-	150	-	-	-	-	-	-	-	-	451
1983	-	-	-	-	417	-	150	-	-	-	-	-	-	-	-	567
1984	-	-	-	-	417	-	224	-	-	-	-	-	-	-	-	641
1988	-	90	-	-	417	-	224	-	-	-	-	-	-	-	-	731
1990	-	90	-	-	699	-	224	-	-	-	-	-	-	-	-	1 013
1991	-	427	-	-	699	-	224	-	-	-	-	-	-	-	-	1 350
1992	-	427	-	471	737	-	248	-	-	-	-	-	-	-	-	1 883
1993	-	427	-	471	1 057	-	248	-	-	-	-	-	-	-	-	2 203
1994	-	427	-	471	1 235	-	248	-	-	-	-	25	-	-	-	2 406
1995	-	427	-	471	1 235	-	248	-	-	-	-	25	-	-	-	2 406

Source : UIC , data for UIC member railways

Pipelines (Oil)																	length of lines	km	2.4
	B	D(-W)	D-E	DK	E	F	GR	I	IRL	L	NL	P	UK	A	FIN	S	EU15	index 1970=100	
1970	52	2 058	1 300	-	1 099	3 609	-	1 860	-	-	323	-	1 634	604	-	-	12 539	100	
1975	317	2 086	1 300	77	1 099	5 213	-	3 007	-	-	391	-	2 658	597	-	-	16 745	134	
1980	458	2 086	1 301	77	1 753	5 254	-	3 069	-	-	391	-	3 166	777	-	-	18 332	146	
1985	147	2 222	1 307	413	2 071	5 101	-	4 062	-	-	391	-	3 423	777	-	-	19 914	159	
1990	301	2 222	1 323	444	2 678	4 948	-	4 086	-	-	391	-	2 422	777	-	-	19 592	156	
1991	294	3 318	D	444	3 097	4 871	-	4 098	-	-	391	-	2 650	777	-	-	19 940	159	
1992	294	3 318	D	409	3 536	4 871	-	4 235	-	-	391	-	2 762	777	-	-	20 593	164	
1993	294	3 318	D	409	3 536	4 830	-	4 235	-	-	391	-	2 601	777	-	-	20 391	163	
1994	294	3 318	D	409	3 536	4 830	-	4 235	-	-	391	-	2 602	777	-	-	20 392	163	
1995	294	3 318	D	409	3 691	4 830	-	4 235	-	-	391	-	2 602	777	-	-	20 547	164	

Source : EUROSTAT , UN , ECMT

Estimates in Italic

Includes only data for pipelines longer than 40 km

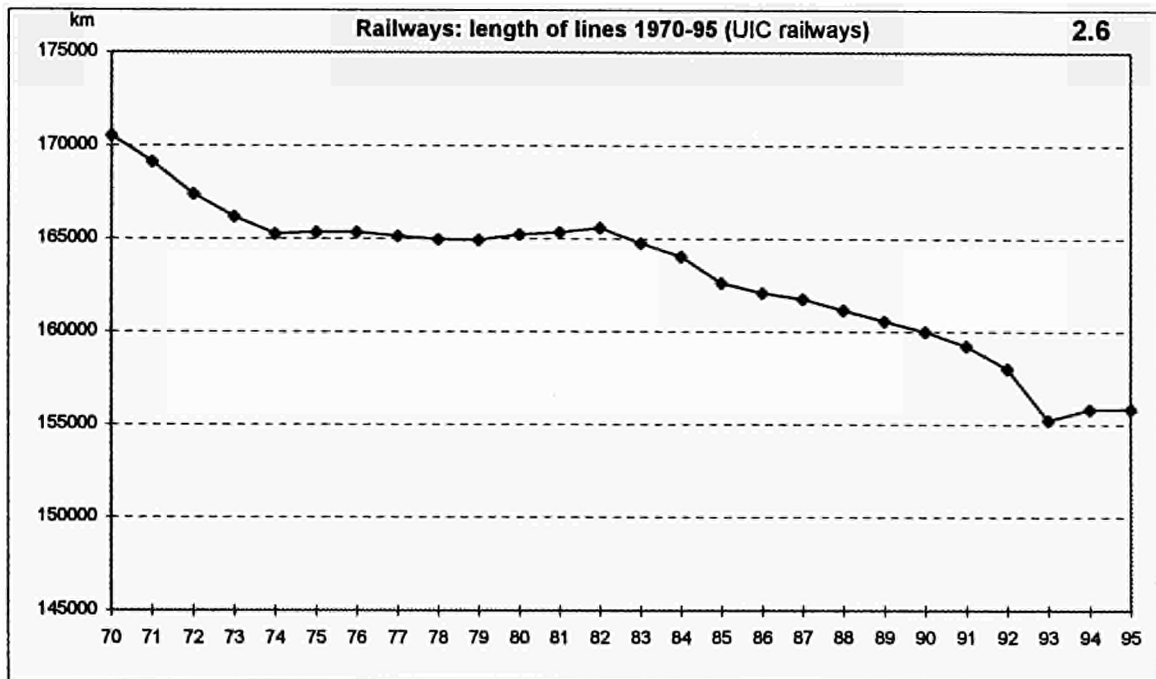
D included in D(-W)

Inland Waterways																		Length in use		km		2.5
Navigable canals, rivers and lakes																						
	B	D(-W)	D-E	DK	E	F	GR	I	IRL	L	NL	P	UK	A	FIN	S	EU15	Index 1970=100				
1970	1 553	4 508	2 300	-	-	7 433	-	2 337	-	37	5 599	-	2 351	350	6 000	-	32 468	100				
1975	1 534	4 506	2 300	-	-	7 080	-	2 337	-	37	4 819	-	2 351	350	6 000	-	31 314	96				
1980	1 510	4 395	2 302	-	-	6 568	-	2 337	-	37	4 843	-	2 351	350	6 057	-	30 760	95				
1985	1 517	4 336	2 319	-	-	6 324	-	2 337	-	37	4 832	-	2 351	350	6 098	-	30 601	94				
1990	1 513	<u>4 350</u>	2 319	-	-	6 197	-	<i>1 366</i>	-	37	5 046	-	2 351	351	6 160	-	<i>29 690</i>	91				
1991	1 513	7 341	D	-	-	5 951	-	1 366	-	37	5 046	-	2 353	351	6 160	-	30 118	93				
1992	1 513	7 341	D	-	-	5 867	-	1 466	-	37	5 046	-	2 353	351	6 120	-	30 094	93				
1993	1 513	7 681	D	-	-	5 825	-	1 466	-	37	5 046	-	2 353	351	6 120	-	30 392	94				
1994	1 513	7 681	D	-	-	5 703	-	1 466	-	37	5 046	-	2 353	351	6 120	-	30 270	93				
1995	1 513	7 343	D	-	-	5 962	-	1 466	-	37	5 046	-	2 353	351	6 120	-	30 191	93				

Source : EUROSTAT, UN

Estimates in italic underlined: change in time series

D included in D(-W)



Chapter 3

Means of Transport

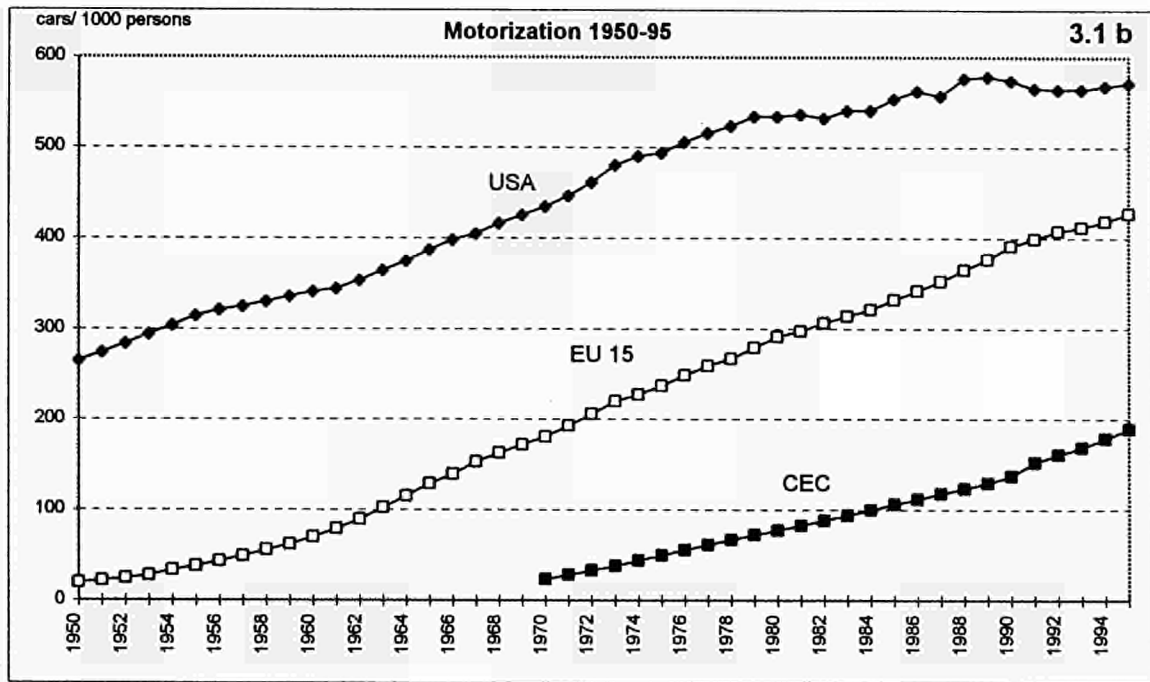


Road		Private Cars															million		3.1a	
	B	D(-W)	D-E	DK	E	F	GR	I	IRL	L	NL	P	UK	A	FIN	S	EU15	Index 1970=100		
1970	2.1	13.9	1.2	1.1	2.4	12.5	0.2	10.2	0.4	0.1	2.6	0.4	10.2	1.2	0.7	2.3	61.3	100		
1975	2.6	17.9	1.9	1.3	4.8	15.5	0.4	15.1	0.5	0.1	3.5	0.7	12.8	1.7	1.0	2.8	82.6	135		
1980	3.2	23.2	2.7	1.4	7.6	19.1	0.9	17.7	0.7	0.1	4.6	0.9	15.0	2.2	1.2	2.9	103.3	169		
1985	3.3	25.8	3.3	1.5	9.3	21.1	1.3	22.5	0.7	0.2	4.9	1.2	16.8	2.5	1.5	3.1	119.1	194		
1990	3.9	30.7	4.8	1.6	12.0	23.6	1.7	27.4	0.8	0.2	5.5	1.8	20.2	2.9	1.9	3.6	142.7	233		
1991	4.0	31.3	5.6	1.6	12.5	23.8	1.8	28.4	0.8	0.2	5.6	2.0	20.2	3.0	1.9	3.6	146.4	239		
1992	4.0	32.0	5.9	1.6	13.1	24.0	1.8	29.4	0.9	0.2	5.7	2.2	20.6	3.2	1.9	3.6	150.2	245		
1993	4.1	32.7	6.2	1.6	13.4	24.4	2.0	29.7	0.9	0.2	5.8	2.4	20.3	3.4	1.9	3.6	152.4	249		
1994	4.2	39.8	D	1.6	13.7	24.9	2.1	30.2	0.9	0.2	5.9	2.6	20.6	3.5	1.9	3.6	155.6	254		
1995	4.3	40.4	D	1.7	14.2	25.5	2.2	31.0	1.0	0.2	6.0	2.7	20.9	3.6	1.9	3.7	169.2	260		

Source : EUROSTAT , national statistics , IRF

estimates in italic

D included in D(-W)



	Road Motorization																	index 1970=100
	number of cars per 1000 inhabitants																	
	B	D(-W)	D-E	DK	E	F	GR	I	IRL	L	NL	P	UK	A	FIN	S	EU15	
1970	214	230	68	218	70	246	26	189	133	212	197	49	183	160	155	284	180	100
1975	267	289	112	256	135	295	48	272	161	258	256	75	228	227	211	337	236	131
1980	321	377	160	271	202	355	89	313	217	352	322	94	266	298	256	347	291	162
1985	339	424	199	293	240	382	127	397	202	413	335	124	297	331	315	373	332	184
1990	388	485	299	309	308	415	171	483	227	480	368	187	352	382	389	419	391	217
1991	397	489	354	307	321	417	173	501	234	496	368	203	349	391	385	420	400	222
1992	400	493	378	310	335	419	177	518	242	513	373	224	<u>355</u>	402	384	417	408	227
1993	409	499	400	312	343	423	188	520	250	523	376	243	350	422	371	410	412	229
1994	417	488	D	312	351	430	199	528	263	540	383	259	<u>352</u>	433	368	409	419	233
1995	421	495	D	321	362	439	208	541	265	561	388	272	357	446	372	415	428	238

Source : EUROSTAT , national statistics , IRF

estimates in italic

underlined: change in time series

D included in D(-W)

Road		Buses and Coaches															1000	3.2
	B	D(-W)	D-E	DK	E	F	GR	I	IRL	L	NL	P	UK	A	FIN	S	EU15	index 1970=100
1970	16.2	47.3	16.7	5.0	30.7	41.0	10.5	32.9	2.0	0.6	9.5	5.9	79.2	6.8	8.1	14.3	327	100
1975	19.6	60.0	21.0	6.1	39.0	52.0	13.4	43.8	2.4	0.7	9.8	6.4	82.2	8.0	8.7	14.1	387	118
1980	19.6	70.5	25.3	7.4	42.6	65.0	18.0	58.1	2.7	0.6	11.2	8.5	78.3	9.0	9.0	12.8	439	134
1985	16.8	69.4	26.4	8.0	41.6	71.0	18.2	76.3	3.3	0.7	11.6	10.4	74.7	9.2	9.0	13.7	460	141
1990	15.6	70.4	30.0	8.1	45.8	75.0	21.4	77.7	4.0	0.8	12.1	12.1	73.0	9.4	9.3	14.6	479	147
1991	15.4	69.6	20.0	10.0	46.6	77.0	22.1	78.6	4.4	0.8	12.4	12.3	72.0	9.3	8.9	14.5	474	145
1992	14.9	69.9	21.0	11.3	47.2	76.0	22.7	78.2	4.6	0.8	12.3	12.8	72.0	9.4	8.7	14.2	476	146
1993	14.8	71.4	17.0	13.0	47.0	77.7	23.2	77.6	6.0	0.8	12.2	13.6	73.0	9.5	8.3	14.1	479	147
1994	14.9	87.4	D	13.6	47.1	79.3	24.0	77.6	6.1	0.9	12.0	14.3	75.0	9.6	8.0	14.3	484	148
1995	14.7	88.0	D	13.6	47.4	80.0	24.6	77.1	6.4	0.9	12.0	15.0	75.0	9.8	8.1	14.6	485	148

Source : EUROSTAT , ECMT

estimates in italic

D included in D(-W)

	Road Goods Vehicles (1)																EU15	Index 1970=100
	B	D(-W)	D-E	DK	E	F	GR	I	IRL	L	NL	P	UK	A	FIN	S		
1970	187	1 028	160	245	710	1 504	105	877	49	9	286	100	1 966	121	108	145	7 600	100
1975	188	1 121	203	224	1 001	1 976	194	1 128	52	11	301	165	2 145	146	128	157	9 140	120
1980	217	1 277	234	249	1 338	2 515	401	1 338	65	9	314	230	2 148	184	146	182	10 847	143
1985	239	1 281	221	253	1 529	3 001	585	1 794	93	9	370	361	2 290	207	180	218	12 630	166
1990	285	1 389	264	287	2 333	3 568	743	2 349	143	11	507	555	2 729	253	264	310	15 989	210
1991	364	1 660	D	291	2 495	3 685	793	2 448	148	12	527	620	<u>2 664</u>	259	264	310	15 641	218
1992	367	1 849	D	297	2 650	3 677	798	2 400	145	13	565	669	2 630	269	263	305	16 895	222
1993	389	2 020	D	306	2 735	3 618	826	2 314	135	14	600	747	2 615	276	253	302	17 160	226
1994	403	2 114	D	322	2 826	3 606	850	2 325	130	15	650	830	<u>2 626</u>	283	249	304	17 633	231
1995	421	2 215	D	333	2 937	3 597	878	2 500	121	15	578	866	2 638	290	252	308	17 948	236

Source : EUROSTAT, IRF, national statistics

Estimates in italic (1) difference in definitions between countries (includes vans in some countries)

Underlined: break in time series comparability of results therefore limited

D included in D(-W)

	Rail Passenger Transport Vehicles (coaches + railcars + trailers)																units	3.4
	B	D(-W)	D-E	DK	E	F	GR	I	IRL	L	NL	P	UK	A	FIN	S	EU15	index 1970=100
1970	3 415	21 508	10 000	1 481	3 353	15 053	574	11 357	481	114	1 932	980	18 678	4 125	1 043	2 705	96 797	100
1975	3 404	21 609	10 502	1 621	3 477	15 320	637	12 717	421	112	1 987	1 017	17 463	3 843	1 083	2 299	97 512	101
1980	3 641	18 357	10 781	1 613	3 506	15 922	660	13 611	343	102	1 986	1 143	17 042	4 055	1 095	2 021	95 858	99
1985	3 610	16 636	10 282	1 851	3 990	15 879	887	18 036	321	109	2 145	1 201	14 252	3 007	1 057	2 073	94 736	98
1990	3 286	14 504	9 635	1 594	3 839	15 748	810	14 025	314	114	2 268	1 232	12 564	3 689	957	1 747	88 326	89
1991	3 252	14 648	9 301	1 586	3 948	15 764	820	13 959	317	142	2 332	1 252	11 825	3 833	971	1 708	85 658	88
1992	3 231	14 833	8 377	1 666	3 972	15 682	830	14 148	322	150	2 563	1 270	11 291	3 834	979	1 657	84 805	88
1993	3 173	14 332	8 777	1 665	4 119	15 507	854	13 893	315	148	2 519	1 244	10 999	3 832	979	1 564	83 940	87
1994	3 109	19 616	D	1 623	4 193	15 589	861	13 744	318	148	2 631	1 346	10 637	3 779	968	1 623	80 183	83
1995	3 139	18 944	D	1 688	4 273	15 799	869	13 494	331	148	2 811	1 380	8 314	3 792	957	1 633	77 370	80

Source : UIC

D included in D(-W)

	Rail Goods Transport Wagons																units	3.5
	B	D(-W)	D-E	DK	E	F	GR	I	IRL	L	NL	P	UK	A	FIN	S	EU15	Index 1970=100
1970	48 912	321 046	137 984	10 285	40 877	302 440	9 025	125 919	9 493	4 230	19 151	9 025	364 884	34 851	21 888	48 178	1 508 266	100
1975	52 574	335 125	142 416	8 978	33 211	283 869	10 461	124 168	7 269	3 828	14 767	7 249	239 688	36 068	22 008	47 068	1 369 727	91
1980	43 428	334 235	142 202	8 324	41 007	253 108	10 871	113 361	4 712	3 650	12 349	8 668	141 245	38 689	21 472	45 800	1 221 229	81
1985	38 628	258 606	163 406	5 870	42 032	219 540	10 591	109 436	1 950	2 864	8 902	5 536	57 750	37 667	18 488	38 980	1 016 226	68
1990	30 332	203 566	163 156	4 632	37 235	162 049	10 967	99 728	1 830	2 719	6 897	4 579	34 403	34 330	15 200	27 470	638 896	56
1991	29 560	220 000	143 869	4 461	36 073	141 000	11 027	97 365	1 830	2 491	6 384	4 439	30 888	34 825	14 700	24 993	603 908	53
1992	28 648	235 881	125 000	4 725	34 987	138 200	11 038	84 961	1 828	2 564	6 275	4 439	21 235	36 831	14 100	23 543	763 876	52
1993	20 646	214 151	98 012	4 588	31 464	134 300	11 103	91 578	1 827	2 512	6 421	4 197	27 689	34 723	14 000	22 022	719 433	48
1994	19 990	271 458	D	4 200	32 877	135 082	11 117	89 993	1 826	2 611	6 040	4 197	14 210	31 918	14 000	20 680	660 298	44
1995	20 318	258 500	D	4 116	29 703	116 100	11 118	89 108	1 826	2 437	8 040	3 933	14 000	28 660	14 000	20 432	620 291	41

Source : UIC, data relate to main railways (UIC members)

Estimates in italic

D included in D(-W)

Sea	EU Merchant Fleet															EU15	3.6
	number of ships of 1000 gt and over																
	B	D	DK (a)	E	F	GR	I	IRL	L	NL	P	UK	A	FIN	S		
Total fleet controlled																	
number	139	1 395	573	202	197	2 896	563	45	6	520	43	639	45	201	328	7 790	
mio dwt	3.9	17.0	11.4	3.3	6.9	118.3	10.8	0.17	0.13	5.0	1.2	21.3	0.5	3.6	13.4	217.0	
National flag																	
number	6	477	397	122	109	1 001	430	31	3	363	32	208	29	137	189	3 532	
mio dwt	0.01	5.9	7.1	1.3	3.5	50.2	7.4	0.12	0.04	3.0	0.54	4.3	0.1	1.1	2.1	86.8	
Foreign flag																	
number	133	918	176	80	88	1 895	133	14	3	157	11	433	18	62	139	4 258	
mio dwt	3.9	11.1	4.3	2.0	3.4	68.0	3.5	0.04	0.10	2.0	0.7	17.0	0.4	2.5	11.2	130.2	
Share of foreign flag	in total fleet																
number	96%	58%	31%	40%	45%	65%	24%	31%	50%	30%	28%	68%	36%	32%	42%	55%	
dwt	99%	65%	38%	61%	50%	58%	32%	25%	72%	40%	55%	80%	75%	69%	84%	60%	

Source : ISL merchant fleet data bases; aggregates based on quarterly updates from the Lloyd's Maritime Information System

(a) including international registers like the Danish International Ship Register; including vessels registered at territorial dependencies

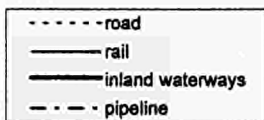
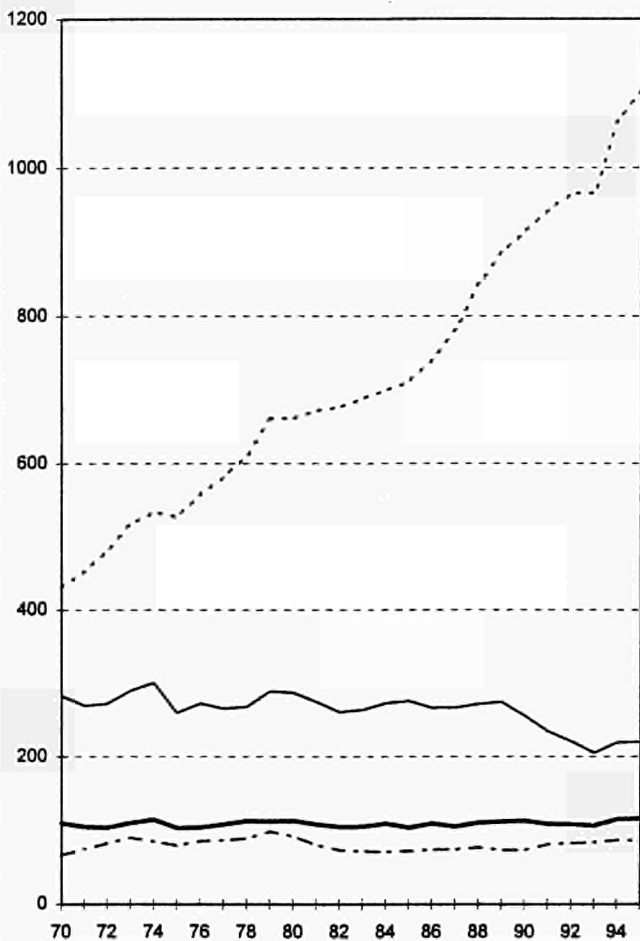
Chapter 4

Goods Transport

EU 15 Goods Transport 1970-95

4.1 a

bio tkm



EU15 - Goods Transport**4.1b**

1000 mio tkm

	Road	Rail	Inl. Water-ways	Pipelines	Total
1970	431	283	110	66	890
1975	526	259	103	79	969
1980	661	287	113	92	1 153
1985	711	275	103	72	1 162
1990	915	255	113	73	1 356
1994	1066	219	115	86	1 487
1995	1103	220	116	86	1 524
1970-95	+155.8 %	-22%	+5.9 %	+29.2 %	+71.3 %

Source : EUROSTAT, ECMT, estimates where data were missing

Average Annual Change

	Road	Rail	Inl. Water-ways	Pipelines	Total
1970-95	+3.8 %	-1.0 %	+0.2 %	+1.0 %	+2.2 %
1970-80	+4.3 %	+0.1 %	+0.3 %	+3.3 %	+2.6 %
1980-90	+3.3 %	-1.0 %	+0.0 %	-2.4 %	+1.6 %
1990-95	+3.8 %	-2.9 %	+0.6 %	+3.2 %	+2.4 %
1995	+3.5 %	+0.3 %	+0.9 %	-1.0 %	+2.5 %

Modal Split

	Road	Rail	Inl. Water-ways	Pipelines
1970	48.5%	31.8%	12.3%	7.4%
1975	54.4%	26.8%	10.7%	8.2%
1980	57.4%	24.9%	9.8%	8.0%
1985	61.2%	23.7%	8.9%	6.2%
1990	67.5%	18.8%	8.3%	5.4%
1994	71.7%	14.8%	7.7%	5.8%
1995	72.3%	14.4%	7.6%	5.6%

Transport distances and groups of goods

4.2

General data

	Road	Rail	Inland Waterw.	Pipe-lines	Sea Intra -EU	Total
tons transported, mio	10 700	900	400	500	500	13 000
ton-km, bio	1100	220	115	85	400	1920
km per ton	100	245	285	170	800	150
% internat. traffic, tons	4	15	50	50	55	10
% internat. traffic, tkm	20	35	70	50	70	35
Modal Split tons, %	82	7	3	4	4	100
Modal Split tkm, %	58	11	6	4	21	100

Distance classes*

	km	% of t	% of tkm
national transport	0-49	60	10
	50-149	22	20
	150- 499	15	45
	500-	3	25

Groups of goods*

% of tkm

(NST/R classification groups in brackets)	Road	Rail	Inland waterw.	Total
Agricultural products (0, 1)	29	13	13	25
Coal, other solid mineral fuels (2)	1	12	12	4
Petroleum and petroleum products (3)	5	8	19	6
Iron ore, steel other metal products (4, 5)	8	20	18	11
Cement, building materials (6)	19	11	25	18
Chemicals, fertilizers (7, 8)	9	11	10	10
Machinery, manufactured articles (9)	29	25	3	26
All goods	100	100	100	100

* data refer to EU 12, 1992 and 3 modes: road, rail and inland waterways for distance classes national traffic only

Goods Transport

Modal Split 1995 by country (tkm) in %

	Road	Rail	Inl. Water-ways	Pipelines
B	74.9	12.8	9.9	2.4
D	64.4	16.6	15.2	3.8
DK*	83.0	6.7	0.0	10.2
E	91.9	5.1	0.0	3.0
F	63.4	23.0	2.8	10.8
GR*	98.1	1.9	0.0	0.0
I	84.7	9.7	0.1	5.5
IRL	90.5	9.5	0.0	0.0
L*	72.4	17.2	11.4	0.0
NL*	58.6	3.0	33.3	5.1
P*	89.5	10.5	0.0	0.0
UK	85.5	7.3	0.1	7.1
A	40.9	36.2	5.3	17.6
FIN	63.5	27.2	9.3	0.0
S	61.3	38.7	0.0	0.0
EU 15	72.3	14.4	7.6	5.6

* Modal Split based on national and internat. road traffic of vehicles registered in the country, see annotations

Goods Transport		Road																1000 mio tkm		4.4	
National and international haulage on national territory by vehicles registered in the country																				(1)	
	B (4)	D(-W) (6)	D-E	DK (3)	E (6)	F	GR (3)	I	IRL	L (3)	NL (3)	P (3)	UK (5)	A	FIN	S	EU15	1970 =100	modal share %		
1970	13.1	78.0	12.2	4.8	51.7	63.6	7.0	58.7	4.0	0.1	12.4	6.7	85.0	3.6	12.4	17.8	431.1	100	48.5		
1975	16.5	96.0	16.7	5.8	76.5	79.7	10.7	62.8	4.5	0.2	15.4	8.3	91.7	5.9	15.5	20.2	526.5	122	54.4		
1980	18.3	124.4	21.0	7.8	89.5	97.4	9.1	119.6	5.0	0.3	17.7	11.8	89.7	10.0	18.4	21.4	661.4	153	57.4		
1985	22.1	132.2	15.1	8.3	110.5	83.8	10.4	144.1	4.5	0.2	18.4	9.4	99.1	11.9	20.1	21.2	711.4	165	61.2		
1990	32.1	169.8	13.0	9.4	150.0	114.8	12.6	177.9	5.1	<u>0.2</u>	22.9	10.9	130.6	13.3	25.4	26.5	914.6	212	67.5		
1991	34.1	187.7	15.0	9.0	157.2	117.2	11.9	182.8	5.1	0.4	23.3	10.8	127.2	13.6	23.8	25.4	944.5	219	69.0		
1992	33.0	192.9	26.1	9.4	160.6	120.0	12.5	184.9	5.2	0.5	25.6	10.6	123.6	13.7	22.9	24.3	965.7	224	70.7		
1993	36.0	<u>184.6</u>	26.9	8.8	164.2	115.3	14.0	179.4	5.1	0.5	26.0	10.0	131.4	14.2	24.1	25.9	966.2	224	71.0		
1994	41.6	267.2	(2)	9.5	172.3	122.1	15.1	187.2	5.3	0.5	25.7	11.2	140.6	15.2	<u>24.8</u>	27.5	1066.9	247	71.7		
1995	42.6	271.1	(2)	9.3	<i>180.0</i>	132.0	15.5	193.7	5.4	0.5	27.1	11.1	146.7	15.7	22.4	29.3	1102.6	256	72.3		

Source : ECMT , Eurostat completed by national statistics and estimates.

National and internat. haulage by veh. registered in the country (1995, bio tkm): DK 23,4; GR 17,0; L 2,1; NL 60,6; P 17,0

Estimates in *italic* underlined: change in time series (3) national traffic only (4) national+international traffic

(1) road+rail+pipelines+inland waterways (5) vehicles with a payload over 3 tonnes

(2) included in D(-W) (6) transport on national territory

Goods Transport

Railways 1000 mio tkm

4.5

	B	D(-W)	D-E	DK	E	F	GR	I	IRL	L	NL	P	UK	A	FIN	S	EU15	Index 1970=100	(1) modal share %
1970	7.9	71.5	41.5	1.9	9.7	67.6	0.7	18.1	0.5	0.8	3.7	0.8	24.5	10.0	6.3	17.3	282.8	100	31.8
1975	6.8	55.3	49.7	1.9	11.1	61.3	0.9	14.9	0.6	0.7	2.7	0.8	20.9	9.5	6.4	16.1	259.5	92	26.8
1980	8.0	64.9	56.4	1.6	10.9	66.4	0.8	18.4	0.6	0.7	3.4	1.0	17.6	11.2	8.3	16.6	286.9	101	24.9
1985	8.3	64.0	57.6	1.8	11.8	55.1	0.7	16.9	0.6	0.6	3.3	1.3	16.0	12.1	8.1	17.3	275.4	97	23.7
1990	8.4	62.3	39.8	1.7	11.1	50.7	0.6	19.5	0.6	0.8	3.1	1.5	16.0	12.8	8.4	18.4	255.4	90	18.8
1991	8.2	63.9	17.8	1.9	10.3	51.5	0.6	19.7	0.6	0.6	3.0	1.7	15.3	13.0	7.6	18.8	234.3	83	17.1
1992	8.1	55.8	13.7	1.9	9.6	49.5	0.5	19.9	0.6	0.6	2.8	1.8	15.5	12.3	7.9	18.5	219.0	77	16.0
1993	7.6	52.6	12.5	1.8	8.1	45.0	0.5	18.4	0.6	0.6	2.7	1.7	13.8	12.0	9.3	18.1	205.2	73	15.1
1994	8.1	71.0	(2)	2.0	9.0	48.8	0.3	20.5	0.6	0.6	2.8	1.6	12.3	13.2	9.9	18.6	219.4	78	14.8
1995	7.3	69.8	(2)	1.9	10.0	47.9	0.3	22.2	0.6	0.5	3.1	2.0	12.5	13.9	9.6	18.5	220.1	78	14.4

Source : UIC, ECMT, national statistics

non-UIC railways are included (ca. 1% of market)

estimates in italic

(1) road+rail+pipelines+inland waterways

(2) included in D(-W)

	Goods Transport Inland Waterways 1000 mio tkm																EU15	Index 1970=100	4.6 (1) modal share %
	B	D(-W)	D-E	DK	E	F	GR	I	IRL	L	NL	P	UK	A	FIN	S			
1970	6.7	48.8	2.4			14.2		0.4		0.3	30.7		0.3	1.3	4.4		109.5	100	12.3
1975	5.1	47.6	2.4			11.9		0.2		0.3	29.6		0.4	1.4	4.4		103.3	94	10.7
1980	5.9	51.4	2.2			12.2		0.2		0.3	33.5		0.4	1.6	5.2		112.8	103	9.8
1985	5.1	48.2	2.4			8.4		0.2		0.3	32.8		0.4	1.5	4.2		103.5	94	8.9
1990	5.4	54.8	1.9			7.6		0.1		0.3	36.5		0.2	1.9	4.0		112.8	103	8.3
1991	5.2	55.1	0.9			6.8		0.1		0.3	34.8		0.2	1.5	3.6		108.5	99	7.9
1992	5.1	56.0	1.2			6.9		0.1		0.3	33.5		0.2	1.5	3.3		105.1	99	7.9
1993	5.1	56.4	1.2			6.0		0.1		0.3	32.1		0.2	1.5	3.4		105.2	97	7.8
1994	5.5	61.8	(2)			5.6		0.1		0.3	36.0		0.2	1.8	3.6		115.0	105	7.7
1995	5.6	64.0	(2)			5.9		0.1		0.3	34.5		0.2	2.1	3.3		116.0	106	7.6

Source : ECMT , Eurostat , national statistics

(1) road+rail+pipelines+inland waterways (2) included in D(-W)

Estimates in italic

Goods Transport		Pipelines (Oil)															1000 mio tkm		4.7	
																	(1)			
	B	D(-W)	D-E	DK	E	F	GR	I	IRL	L	NL	P	UK	A	FIN	S	EU15	index 1970=100	modal share %	
1970	0.3	15.1	2.2	0.0	1.0	28.2		9.1			4.1		2.7	3.6			66.2	100	7.4	
1975	1.5	13.1	4.3	0.0	2.1	31.1		11.5			4.5		5.4	5.8			79.3	120	8.2	
1980	1.8	13.1	5.0	0.0	3.0	34.7		11.9			5.0		10.1	7.1			91.7	138	8.0	
1985	0.8	8.7	4.5	1.0	3.2	24.1		9.0			4.3		11.2	5.0			71.8	108	6.2	
1990	1.0	11.7	3.3	1.7	4.2	20.5		9.3			4.9		11.0	5.3			73.0	109	5.4	
1991	1.1	13.5	1.8	2.2	4.8	22.7		11.8			5.4		11.1	6.7			81.0	120	5.9	
1992	1.2	13.4	2.0	2.4	5.3	23.4		12.2			5.5		10.4	6.7			82.5	122	6.0	
1993	1.3	13.7	2.3	2.5	5.6	23.3		12.2			5.5		10.7	6.7			83.7	124	6.2	
1994	1.4	16.8	(2)	2.9	5.5	22.8		12.5			5.6		12.0	7.0			86.4	126	5.8	
1995	1.4	16.1	(2)	2.9	5.9	22.4		12.6			5.3		12.3	6.8			85.6	126	5.6	

Source : ECMT, Eurostat

estimates in italic

(1) road+rail+pipelines+inland Waterways

(2) included in D(-W)

Goods Transport

Sea

4.8

Traffic at selected major seaports
million tons

			1970	1980	1990	1995
1	Rotterdam	NL	226	276	288	291
2	Antwerpen	B	78	82	102	108
3	Marseille	F	74	103	90	87
4	Hamburg	D	47	63	61	72
5	Le Havre	F	58	77	54	54
6	London	UK	64	48	58	51
7	Genoa	I	53	51	44	47
8	Tees & Hartlepool	UK	23	38	40	45
9	Dunkerque	F	25	41	37	39
10	Triest	I	27	38	34	38
11	Wilhelmshaven	D	22	32	16	34
12	Algeciras	E	8	22	25	34
13	Southampton	UK	28	25	29	32
14	Milford Haven	UK	41	39	32	32
15	Zeebrugge	B	8	12	30	31
16	Bremer/Bremerh.	D	23	25	28	31
17	Amsterdam	NL	21	22	31	31
18	Liverpool	UK	31	13	23	30
19	Gothenburg	S	20	22	26	27
20	Bilbao	E	11	21	25	25
"	Lisbon	P	9	14	14	14
"	Saloniki	GR	8	9	14	13
"	Copenhagen	DK	6	7	9	11
"	Dublin	IRL	7	7	8	10
"	Helsinki	FIN	4	5	8	10
total of seaports			922	1092	1126	1197
average annual growth rate			1970-1995 : + 1,0 %			

Source : ISL , Eurostat, national statistics

Freight traffic at selected airports

1000 tons

		1994	1995	change 95 %	
1	Frankfurt Rhein/Main	D	1246	1297	4.1
2	London Heathrow	UK	967	1043	7.8
3	Amsterdam Schipol	NL	838	978	16.6
4	Paris Charles de Gaulle	F	787	824	4.8
5	Bruxelles	B	380	427	12.1
6	Luxembourg	L	242	286	18.5
7	Köln/Bonn	D	236	276	17.3
8	Paris Orly	F	295	276	-6.3
9	Roma Fiumicino	I	256	257	0.5
10	London Gatwick	UK	224	232	3.8
11	Madrid Barajas	E	213	230	8.0
12	Milano Malpensa	I	111	126	13.6
13	Stockholm Arlanda	S	93	104	11.9
14	Athens Hellenikon	GR	98	95	-2.9
15	London Stansted	UK	88	93	6.1
16	Wien Swechat	A	83	93	12.1
17	Lisbon	P	81	89	10.4
18	East Midlands	UK	56	83	47.9
19	Oostende	B	60	82	35.4
20	Helsinki	FIN	74	78	6.0
21	Milano Linate	I	67	68	2.2
22	Barcelona	E	59	68	16.0
23	Munich	D	64	65	1.5
24	Dublin	IRL	54	60	11.4
25	Düsseldorf	D	44	56	17.0
total of airports			6772	7337	8.3

Source: ACI

Combined transport

4.10

Traffic of UIRR companies

Consignments*		1994	1995	change 1995
<u>International traffic</u>				%
Kombiverkehr	<i>D</i>	302.6	368.8	22
Ökombi	<i>A</i>	122.1	128.1	5
Cemat	<i>I</i>	88.4	94.7	7
Novatrans	<i>F</i>	73.4	75.6	3
T.R.W.	<i>B</i>	66.2	61.7	-7
Trailstar	<i>NL</i>	14.0	18.3	31
Skan Kombi	<i>DK</i>	12.1	13.1	8
C.T.L.	<i>UK</i>	1.6	9.5	487
Combiberia	<i>E</i>	13.8	7.4	-47
Total		694.2	777.2	12
<u>national traffic</u>				
Kombiverkehr	<i>D</i>	309.7	261.0	-16
Cemat	<i>I</i>	140.0	167.0	19
Novatrans	<i>F</i>	132.9	124.3	-6
Ökombi	<i>A</i>	43.8	43.1	-2
Skan Kombi	<i>DK</i>	36.4	36.4	0
T.R.W.	<i>UK</i>	0.3	0.7	119
Total		663.1	632.6	-5

*Consignment = equivalent of an average road transport (= 2.3 TEU)

	bio tkm	of which national	Semi Trailers	<u>% of traffic</u> Rolling Road	Swap bodies
1986	13	7	27%	11%	62%
1990	19	7	20%	18%	62%
1992	20	7	18%	17%	65%
1993	22	7	16%	16%	68%
1994	25	8	14%	17%	69%
1995	25	7	14%	19%	67%

Source: UIRR

Traffic through the Alps

4.11

internal, import, export and transit traffic
Alpine Arc Mt. Cenis/Fréjus - Brenner

a) Rail million net-tonnes

	Switzerland		Austria	France	Total
	St. Gotthard	Simplon/ Lötschberg	Brenner	Mont-Cenis	
1985	11.2	2.8	4.7	7.5	26.2
1989	13.9	3.7	4.9	7.8	30.3
1992	12.4	5.0	8.2	6.8	32.4
1993	11.7	4.3	7.6	7.0	30.6
1994	13.2	4.7	8.3	7.7	33.9
1995	13.6	4.4	8.4	8.4	34.8
annual growth					
85-89	5.5	7.2	1.0	1.0	3.7
89-94	-1.0	4.9	11.1	-0.3	2.3
1995	3.0	-6.4	1.2	9.1	2.7

b) Road million net-tonnes

	Switzerland		Austria	France	Total
	St. Gotthard	Simplon G.St. Bernard	Brenner	Fréjus Mont-Blanc	
1985	1.9	0.8	14.3	12.3	29.3
1989	3.0	1.0	15.4	20.0	39.4
1992	3.9	1.2	16.5	23.1	44.7
1993	4.5	1.1	17.1	24.7	47.4
1994	5.1	1.1	17.6	26.5	50.3
1995	5.5	1.1	20.0	25.8	52.4
annual growth					
85-89	12.0	5.7	1.9	12.9	7.7
89-94	11.2	0.0	2.7	5.8	5.0
1995	5.0	0.0	13.6	-2.5	4.2

Source: GVF

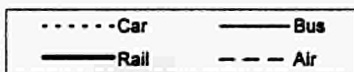
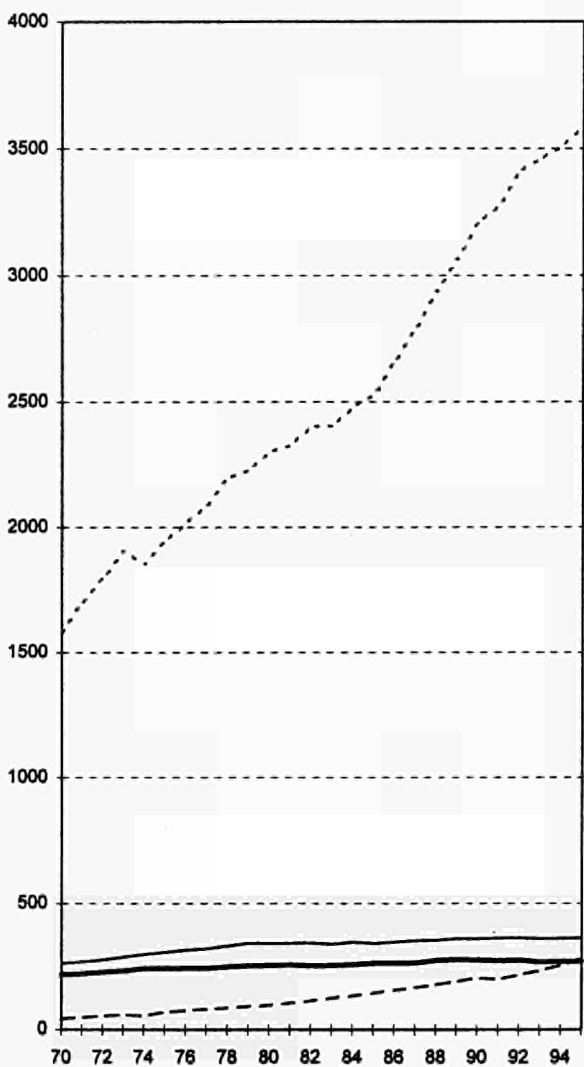
Chapter 5

Passenger Transport

EU 15 Passenger Transport 1970-95

5.1 a

bio pkm



Passenger Transport EU 15

5.1b

1.000 mio pkm

	Private Cars	Buses & Coaches	Rail	Air (1)	Total
1970	1 590	262	216	43	2 111
1975	1 955	306	241	69	2 570
1980	2 298	341	253	96	2 987
1985	2 546	341	262	143	3 292
1990	3 217	359	274	204	4 055
1994	3 511	360	269	254	4 394
1995	3 592	361	271	274	4 498
1970-95	+125.9 %	+37.9 %	+25.0 %	+537.2 %	+113.0 %

Sources: ECMT, UIC, DIW, national statistics, estimates

(1) Source : AEA , IACA and estimates

Average Annual Change

	Private Cars	Buses & Coaches	Rail	Air	Total
1970-95	+3.3 %	+1.3 %	+0.9 %	+7.7 %	+3.1 %
1970-80	+3.7 %	+2.7 %	+1.6 %	+8.4 %	+3.5 %
1980-90	+3.4 %	+0.5 %	+0.8 %	+7.8 %	+3.1 %
1990-95	+2.2 %	+0.1 %	-0.3 %	+6.1 %	+2.1 %
1995	+2.3 %	+0.2 %	+0.6 %	+7.9 %	+2.3 %

Modal Split

	Private Cars	Buses & Coaches	Rail	Air
1970	75.3%	12.4%	10.2%	2.0%
1975	76.1%	11.9%	9.4%	2.7%
1980	76.9%	11.4%	8.5%	3.2%
1985	77.3%	10.3%	8.0%	4.3%
1990	79.3%	8.9%	6.8%	5.0%
1994	79.9%	8.2%	6.1%	5.8%
1995	79.9%	8.0%	6.0%	6.1%

Passenger Transport		Private Cars															1000 mio pkm		5.2
	B	D(-W)	D-E	DK	E (1)	F	GR	I	IRL	L	NL	P	UK	A (2)	FIN	S	EU15	1970=100	
1970	49.3	381.6	24.5	33.3	64.3	304.7	13.5	211.9	15.3	2.0	66.3	17.5	297.0	30.0	23.7	55.4	1590.3	100	
1975	57.5	437.3	39.5	37.8	99.3	374.8	26.1	279.3	19.5	2.4	89.1	29.4	331.0	36.6	31.2	64.2	1955.0	123	
1980	65.4	475.2	56.0	38.1	130.9	452.5	45.0	324.0	27.9	2.8	107.1	41.0	388.0	43.5	33.9	66.7	2298.0	145	
1985	67.4	494.2	70.0	43.2	119.8	494.4	66.6	373.7	30.4	3.0	118.0	53.0	441.0	56.0	43.7	71.6	2545.9	161	
1990	80.7	599.3	90.3	53.7	174.4	586.0	76.2	522.6	36.3	3.5	136.2	65.0	588.0	63.7	51.2	90.0	3217.2	203	
1991	82.9	602.7	108.0	55.3	182.9	599.0	79.5	538.3	37.1	3.7	136.7	67.5	584.0	65.7	50.6	91.4	3285.3	207	
1992	84.6	607.8	120.8	56.6	193.8	618.0	82.5	602.2	38.7	3.7	138.6	71.6	587.0	68.8	50.5	91.7	3416.9	216	
1993	86.9	615.9	122.0	57.4	198.4	634.6	86.0	603.1	40.0	3.8	140.5	82.9	585.0	69.5	49.7	90.7	3466.3	219	
1994	89.5	728.2	D	59.1	205.2	651.2	90.8	600.3	41.2	3.9	145.5	90.0	596.0	70.0	49.6	90.7	3511.1	222	
1995	91.2	741.5	D	61.5	211.4	664.3	95.0	615.3	42.4	4.0	146.8	99.5	606.0	71.5	50.1	91.7	3592.0	227	

Source : ECMT, national statistics, estimates

Estimates in italic (1) data relate to traffic on national roads only, total traffic > 300 bio pkm; 95: extrapolation of old series
(2) source: 1970-92: ECMT , 93-95 DG VII estimate

D included in D(-W)

Passenger Transport																	Buses		1000 mio pkm		5.3	
	B	D(-W)	D-E	DK	E	F	GR	I	IRL	L	NL	P	UK	A	FIN	S	EU16	index 1970=100	(1) modal share %			
1970	9.3	48.6	19.1	4.6	20.9	25.2	4.8	32.0	1.2	0.4	11.1	4.4	60.0	7.6	7.0	5.5	261.7	100	12.4			
1975	9.6	58.7	23.3	5.7	26.9	28.9	4.8	42.3	1.9	0.4	11.8	5.2	62.0	9.8	8.0	6.4	305.6	117	12.0			
1980	9.1	65.6	24.4	7.3	28.1	38.0	5.8	57.8	3.0	0.4	13.2	7.6	52.0	12.5	8.5	7.3	340.6	130	11.6			
1985	9.0	54.0	21.3	8.8	31.8	37.0	5.8	68.1	2.6	0.4	13.0	9.5	49.0	12.8	8.6	9.0	340.6	130	10.7			
1990	10.9	55.5	16.5	9.3	33.4	41.3	5.1	84.0	2.6	0.4	13.0	10.3	46.0	13.6	8.5	9.0	359.3	137	9.2			
1991	11.2	58.2	11.4	9.2	35.5	42.9	5.1	84.7	2.4	0.4	14.0	10.7	45.0	13.7	8.1	9.3	361.8	138	9.1			
1992	11.6	59.1	10.8	9.3	35.5	41.1	5.2	87.8	2.8	0.5	14.0	11.4	43.0	13.7	8.0	9.3	363.0	139	8.9			
1993	11.6	60.6	9.6	9.2	37.1	42.0	5.2	81.5	2.9	0.5	13.7	11.8	43.0	13.7	8.0	9.3	359.6	137	8.7			
1994	12.0	69.4	(2)	9.5	38.1	42.6	5.6	79.3	3.0	0.5	13.9	12.6	43.0	13.7	8.0	9.2	360.3	139	8.6			
1995	12.5	68.6	(2)	9.9	40.2	40.5	5.6	79.0	3.0	0.5	14.3	13.1	43.0	13.7	8.0	9.2	361.0	139	8.5			

Source : ECMT

Estimates in italic Belgium: change in time series in 93, old series was extrapolated to avoid break

(1) Private cars + Buses + Railways+ Air

(2) included in D(-W)

Passenger Transport		Railways															1000 mio pkm		5.4	
	B	D(-W)	D-E	DK	E	F	GR	I	IRL	L	NL	P	UK	A	FIN	S	EU15	index 1970=100	(1) modal share %	
1970	7.6	39.2	17.7	3.6	15.0	41.0	1.5	34.9	0.8	0.2	8.0	3.5	30.4	6.4	2.2	4.8	216.4	100	10.2	
1975	7.7	39.2	21.3	3.4	17.6	50.7	1.6	39.2	0.9	0.2	8.5	4.9	30.3	6.7	3.1	5.6	240.8	111	9.4	
1980	7.0	41.0	22.0	4.5	14.8	54.7	1.5	42.9	1.0	0.2	8.9	6.1	30.3	7.6	3.2	7.0	252.7	117	8.5	
1985	6.6	43.5	22.5	4.9	17.2	62.1	1.7	40.3	1.0	0.2	9.0	5.7	29.7	7.5	3.2	6.8	262.0	121	8.0	
1990	6.5	44.6	17.5	5.1	16.7	63.8	2.0	48.3	1.2	0.2	11.1	5.7	33.2	8.7	3.3	6.2	274.0	127	6.8	
1991	6.8	47.2	10.3	4.9	16.4	62.3	2.0	49.2	1.3	0.2	15.1	5.7	32.0	9.4	3.2	5.8	271.8	125	6.6	
1992	6.8	47.4	9.8	4.8	17.6	62.6	2.0	51.1	1.2	0.3	15.4	5.7	31.5	9.7	3.1	5.4	274.5	127	6.4	
1993	6.7	48.7	10.0	4.8	16.5	58.2	1.7	49.9	1.3	0.3	14.8	5.4	30.5	9.5	3.0	5.9	267.1	123	6.2	
1994	6.6	60.7	(2)	5.1	16.1	58.9	1.4	51.7	1.3	0.3	14.4	5.1	28.8	9.4	3.0	6.1	269.0	125	6.1	
1995	6.8	63.6	(2)	5.0	16.6	55.6	1.6	52.4	1.3	0.3	14.0	4.8	29.3	9.8	3.2	6.4	270.5	125	6.0	

Source : ECMT , UIC and national statistics

non-UIC railways are included (ca. 2% of market)

(1) Private cars + Buses + Railways+ Air

(2) included in D(-W)

Passenger Transport		Air traffic between countries														million passengers	5.5
reporting country (from)		1994															
to	B	D	DK	E	F	GR	I	IRL	L	NL	P	UK	A	FIN	S	EU15	
B		0.91	0.26	1.69	0.91	0.48	0.86	0.13	0.04	0.26	0.33	1.75	0.16	0.10	0.22	8.10	
D	0.91		1.01	12.50	3.12	4.83	3.08	0.36	0.15	1.59	1.38	6.16	1.68	0.47	0.60	37.84	
DK	0.23	0.99		0.56	0.53	0.52	0.38	0.02	0.02	0.34	0.09	1.18	0.16	0.30	1.63	6.95	
E	1.70	12.61	0.74		2.97	0.22	2.74	0.51	0.22	1.94	0.69	17.31	0.83	0.40	1.00	43.68	
F	0.94	3.34	0.54	3.27		1.10	3.65	0.44	0.08	1.24	1.20	7.45	0.46	0.19	0.43	24.33	
GR	0.47	5.28	0.59	0.19	1.04		1.26	0.07	0.04	1.01	0.02	4.92	0.75	0.23	0.74	16.51	
I	0.83	3.02	0.37	2.72	3.39	1.30		0.14	0.05	0.90	0.35	4.03	0.35	0.08	0.16	17.59	
IRL	0.11	0.36	0.08	0.52	0.44	0.08	0.14		0.00	0.16	0.11	4.98	0.03	0.00	0.01	7.02	
L	0.04	0.16	0.02	0.21	0.11	0.04	0.05	0.02		0.05	0.06	0.16	0.00	0.00	0.00	0.92	
NL	0.31	1.60	0.39	1.96	1.16	1.03	0.94	0.15	0.04		0.53	4.03	0.31	0.14	0.48	13.07	
P	0.31	1.26	0.05	0.63	1.16	0.03	0.38	0.11	0.06	0.53		2.45	0.06	0.03	0.09	7.18	
UK	1.88	6.26	1.28	17.65	7.26	4.96	4.19	5.12	0.16	4.01	2.69		1.14	0.42	1.12	68.14	
A	0.16	1.71	0.17	0.64	0.44	0.77	0.37	0.03	0.01	0.31	0.08	1.14		0.05	0.13	6.01	
FIN	0.10	0.47	0.30	0.40	0.19	0.23	0.08	0.00	0.00	0.14	0.03	0.42	0.05		0.73	3.14	
S	0.22	0.51	1.26	0.78	0.34	0.42	1.09	0.06	0.00	0.43	0.08	0.64	0.10	0.73		6.66	

Source : Eurostat

bold= 20 most important relations

Traffic at selected major airports

		Total Passenger Movements million passengers					% change	
		1970	1980	1990	1995	1996	1996	
1	London Heathrow	UK	15.6	27.5	43.0	54.5	55.8	+3.0
2	Frankfurt Rhein-Main	D	9.4	17.6	29.4	38.2	38.8	+1.5
3	Paris Charles de Gaulle	F	2.2	10.1	22.5	28.4	31.7	+11.9
4	Paris Orly	F	10.4	15.7	24.3	26.7	27.4	+2.7
5	Amsterdam Schiphol	NL	5.2	9.4	16.5	25.4	27.8	+9.6
6	London Gatwick	UK	3.7	9.7	21.2	22.5	24.1	+7.7
7	Rome Fiumicino	I	6.5	11.4	17.7	21.1	23.8	+9.0
8	Madrid Barajas	E	4.8	10.1	16.2	20.0	21.9	+9.5
9	Copenhagen Kastrup	DK	6.5	8.6	12.1	14.7	15.9	+7.9
10	München	D	3.6	6.0	11.4	14.9	15.7	+5.5
11	Palma de Mallorca	E	4.8	7.3	11.3	15.1	15.4	+4.5
12	Stockholm Arlanda	S	2.6	4.3	14.0	14.7	15.0	+5.1
13	Manchester	UK	1.9	4.3	10.1	15.0	14.8	-0.9
14	Düsseldorf	D	3.6	7.2	11.9	14.9	14.4	-4.8
15	Bruxelles Zaventem	B	2.8	5.1	7.1	12.6	13.5	+7.3
16	Barcelona	E	4.0	5.8	9.0	11.7	13.4	+14.5
17	Milano Linate	I	2.9	6.2	9.5	10.8	12.6	+16.0
18	Athens Hellenikon	GR	3.7	9.2	10.1	10.5	11.0	+5.0
19	Vienna	A	1.5	2.7	5.5	8.5	9.1	+6.9
20	Dublin	IRL	1.9	2.6	5.5	8.0	9.1	+13.3
Total of Airports			97.6	180.8	308.3	388.2	411.2	+5.9

average annual growth rate 1970-1996 :+ 5,7 %

Source : ACI , ICAO

Estimates in italic

Major EU-Airlines

Passenger Transport : In Europe

Scheduled services, international + domestic

		1000 million pkm				% change
		1982	1990	1995	1996	1996
Sabena	B	0.88	1.65	3.18	3.31	+4.1
Lufthansa	D	4.25	7.81	11.98	12.62	+5.4
SAS	DK/N/S	3.00	5.77	7.30	7.80	+6.9
Iberia	E	4.47	6.59	6.59	6.56	-0.6
Air France	F	3.89	6.08	5.88	6.51	+10.8
Olympic Airways	GR	1.80	2.69	3.01	3.15	+4.6
Alitalia	I	2.60	4.83	6.88	7.83	+13.8
Aer Lingus	IRL	0.81	1.73	1.82	1.98	+8.4
Luxair	L	0.09	0.25	0.38	0.42	+10.8
KLM	NL	1.24	2.75	5.12	5.59	+9.1
TAP-Air Portugal	P	1.11	2.45	2.95	3.10	+4.9
British Airways	UK	5.10	10.22	14.42	15.11	+4.8
Austrian Airlines	A	0.95	1.71	2.12	2.11	-0.2
Finnair	FIN	0.95	1.86	4.37	4.45	+0.2
Total of airlines		31.14	56.39	76.00	80.54	+6.0
average annual growth rate		1982-1996 : + 7,0 %				

Source : AEA

Major EU-Airlines

Passenger Transport : Total

Scheduled services, international + domestic

1000 million pkm

		1980	1990	1995	1996	% change 1996
Sabena	B	4.85	5.91	8.62	9.01	+4.5
Lufthansa	D	21.06	42.10	61.60	63.26	+2.7
SAS	DK/N/S	7.53	11.52	18.51	19.49	+5.3
Iberia	E	14.85	20.49	23.81	25.92	+8.9
Air France	F	25.40	36.62	49.52	57.47	+16.1
Olympic Airways	G	5.06	7.76	7.95	8.53	+7.4
Alitalia	I	12.88	19.13	31.95	34.56	+8.1
Aer Lingus	IRL	2.05	3.14	4.66	5.13	+10.0
Luxair	L	0.03	0.20	0.38	0.42	+10.8
KLM	NL	14.06	28.17	44.46	48.86	+9.9
TAP-Air Portugal	P	3.43	6.84	7.72	7.98	+3.4
British Airways	UK	16.08	44.66	93.86	100.56	+7.1
Austrian Airlines	A	1.12	2.82	4.91	5.44	+10.7
Finnair	FIN	2.12	4.71	8.34	8.57	+2.8
Total of companies		130.5	234.0	366.3	395.2	+7.9

average annual growth rate 1980-1996 : + 7,2 %

Source : AEA , IATA

Estimates in italic

Chapter 6

Safety

Fatalities																	6.1	
Road																	index	
persons killed																	1970=100	
in 1000																		
	B	D(-W)	D-E	DK	E	F	GR	I	IRL	L	NL	P	UK	A	FIN	S	EU15	
1970	3.00	19.19	2.14	1.21	4.20	15.03	0.93	10.21	0.54	0.13	3.18	1.42	7.50	2.24	1.06	1.31	73.3	100
1975	2.35	14.87	2.32	0.83	4.49	13.00	1.06	9.51	0.59	0.12	2.32	2.68	6.37	2.20	0.91	1.17	64.8	88
1980	2.40	13.04	2.01	0.89	5.02	12.38	1.23	8.54	0.56	0.10	2.00	2.28	6.18	1.74	0.55	0.85	59.5	81
1985	1.80	8.40	1.67	0.77	4.90	10.45	1.70	7.13	0.41	0.08	1.44	1.88	5.34	1.36	0.54	0.81	48.7	68
1990	1.98	7.91	3.14	0.83	8.95	10.29	1.74	8.62	0.48	0.07	1.38	2.32	5.40	1.39	0.65	0.77	51.7	71
1991	1.87	11.30	D	0.61	8.80	9.82	1.79	7.50	0.45	0.08	1.28	2.48	4.75	1.39	0.83	0.75	51.3	70
1992	1.67	10.63	D	0.58	8.01	9.08	1.83	7.43	0.42	0.08	1.29	2.37	4.38	1.40	0.80	0.76	48.5	68
1993	1.66	9.95	D	0.56	6.38	9.05	1.83	7.40	0.43	0.07	1.25	2.30	3.81	1.28	0.48	0.63	47.1	64
1994	1.69	9.81	D	0.55	5.62	8.53	2.08	8.58	0.40	0.07	1.30	1.91	3.85	1.34	0.48	0.59	44.6	61
1995	1.51	9.45	D	0.58	5.75	6.41	1.99	6.51	0.44	0.07	1.23	2.10	3.77	1.21	0.44	0.57	44.0	60

SOURCE: UN-ECE, ECMT

Spain: change in time series in 1993 (people killed considered if they die within 30 days instead of 24 hours)

D included in D(-W)

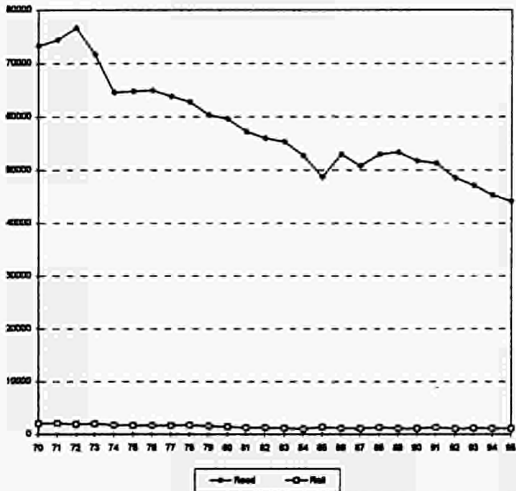
Fatalities Railways persons killed																	6.2	
	B	D(-W)	D-E	DK	E	F	GR	I	IRL	L	NL	P	UK	A	FIN	S	EU15	index 1970=100
1970	90	549	50	26	75	273	50	296	5	2	84	200	129	110	65	40	2 044	100
1975	56	397	50	39	75	225	26	256	9	3	84	200	115	64	33	40	1 672	82
1980	52	288	50	18	74	203	38	228	20	4	27	186	59	75	24	49	1 395	68
1985	34	229	50	0	27	303	45	226	6	3	102	172	61	51	18	20	1 347	66
1990	20	198	51	6	30	188	34	204	14	2	43	131	79	54	36	18	1 108	54
1991	18	183	121	13	30	222	50	230	11	4	39	150	84	76	34	26	1 291	63
1992	22	172	135	16	30	203	28	116	11	1	34	148	44	31	31	29	1 051	51
1993	23	283	D	8	32	171	61	86	3	4	35	132	231	66	20	19	1 174	57
1994	30	272	D	10	31	150	42	83	11	5	35	149	197	52	30	11	1 108	54
1995	20	275	D	10	23	129	33	12	7	3	35	95	200	68	17	9	936	46

Source : UIC, EUROSTAT

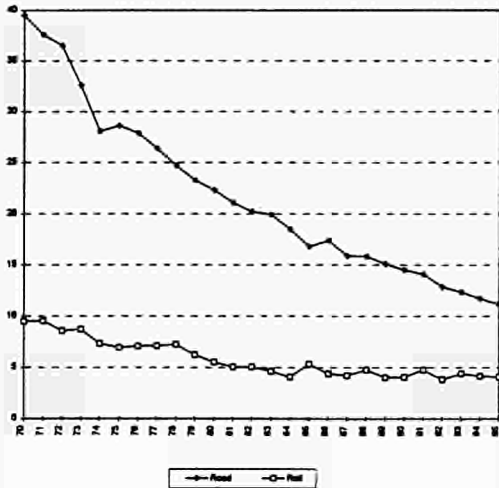
Estimates in italic

D included in D(-W)

Number of persons killed



Fatalities per 1000 million passenger



Chapter 7

Environment

Emission standards**7.1****Heavy duty vehicles (Lorries)**

g per kw/h

	from	CO	VOCs	NOx	PM
EURO I	1.10.1993	4.5	1.1	8	0.612 <85 kW 0.36 >85 kW
EURO II	1.10.1996	4	1.1	7	0.15
EURO III*	1.1.2000	2	0.6	5	0.1
EURO IV	2004				

* proposal

Passenger Cars

Petrol g/km

	CO	VOCs	NOx
Directive 94/12/EC*	2.7	0.341	0.252
proposal 2000	2.3	0.2	0.15

Diesel g/km

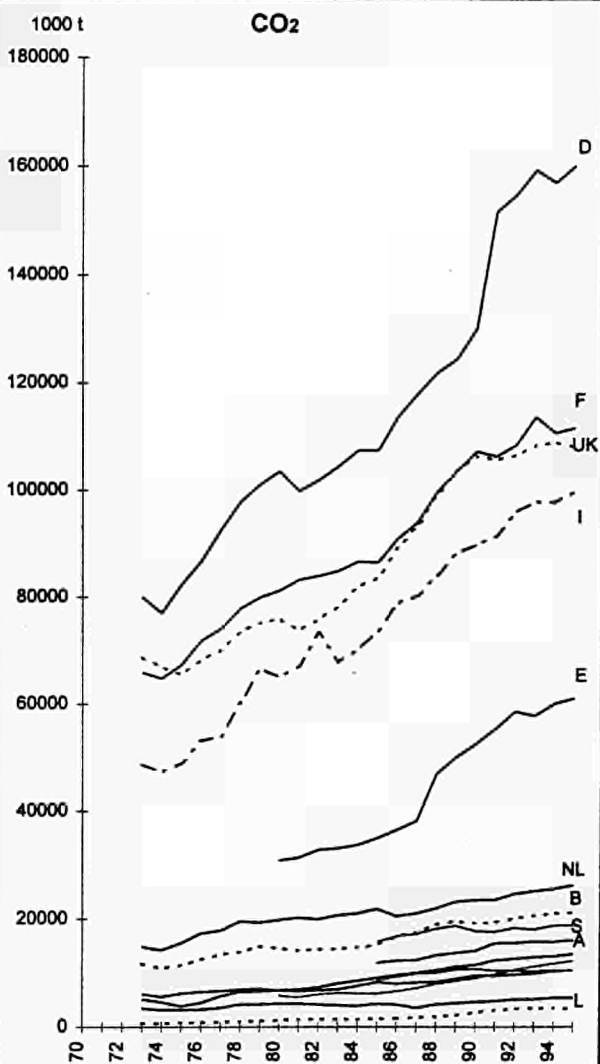
	CO	VOCs	NOx	PM
Directive 94/12/EC*	1.06	0.71	0.63	0.08
proposal 2000	0.64	0.56	0.5	0.05

* corrected values

PM = particulate matter

Emissions from road vehicles

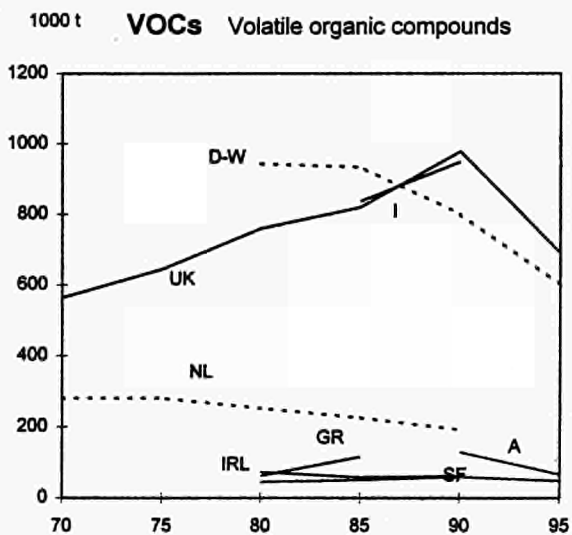
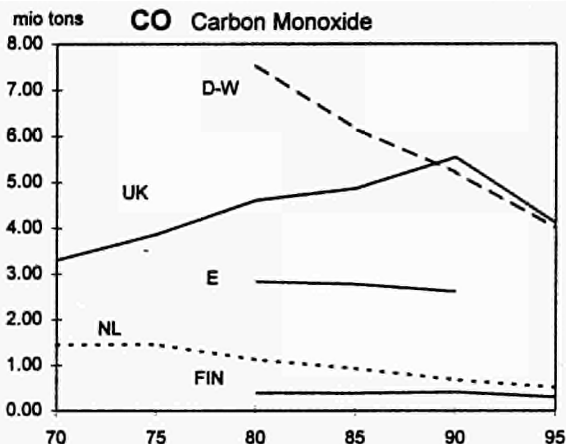
7.2



source : EUROSTAT

Emissions from road vehicles

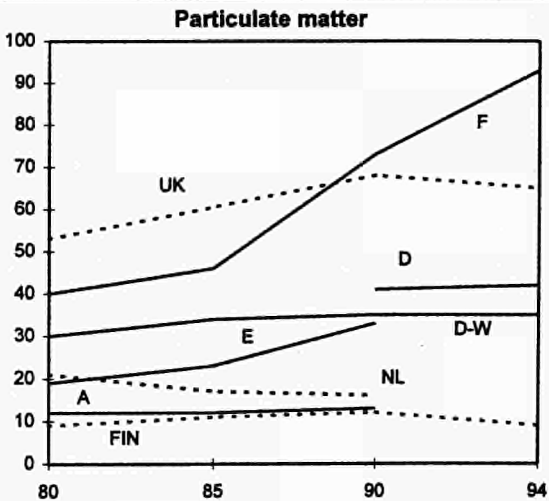
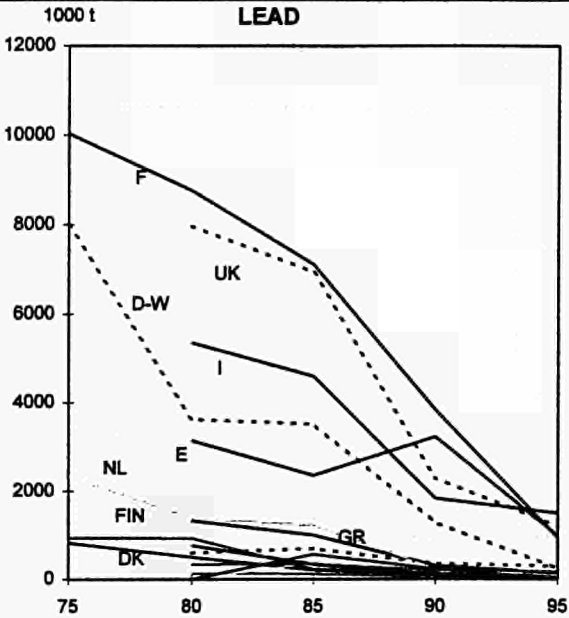
7.3



source : EUROSTAT

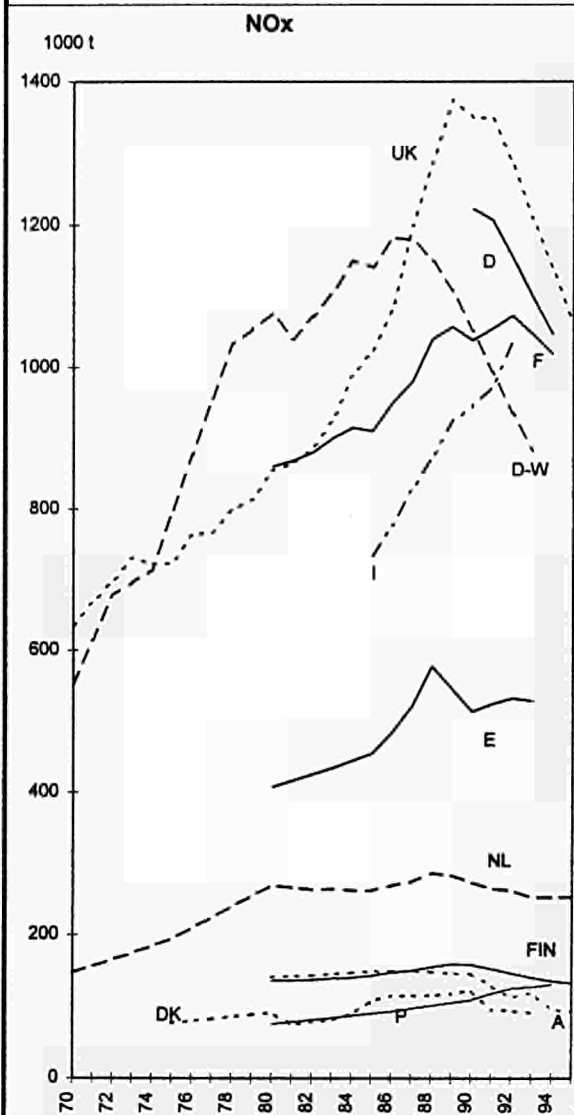
Emissions from road vehicles

7.4



Emissions from road vehicles

7.5



source : EUROSTAT

Chapter 8

**Central and Eastern
European Countries**

(CEC)

BG	Bulgaria
CS	Czechoslovakia (till 92)
CZ	Czech Republic (from 93)
EST	Estonia
H	Hungary
LT	Lithuania
LV	Latvia
PL	Poland
RO	Romania
SLO	Slovenia
SK	Slovak Republic (from 93)

Goods Transport CEC**8.1**

1000 mio tkm

	Road	Rail	Int.water-ways	Pipelines	Total
1970	55	274	10	16	355
1980	122	364	13	37	537
1985	134	341	13	37	524
1989	145	336	15	39	534
1990	143	270	11	32	456
1994	124	159	6	24	313
1995	142	169	9	23	343
1989-95	- 1.8 %	- 49.8 %	- 39.4 %	- 40.0 %	- 35.8 %

Source : National statistics, ECMT , UIC

Average Annual Change

	Road	Rail	Int.water-ways	Pipelines	Total
1970-95	+3.9 %	-1.9 %	-0.5 %	+1.5 %	-0.1 %
1970-80	+8.3 %	+2.9 %	+3.0 %	+8.7 %	+4.2 %
1980-89	+1.9 %	-0.9 %	+1.0 %	+0.4 %	-0.1 %
1989-95	-0.3 %	-10.8 %	-9.8 %	-8.0 %	-7.1 %
1995	+14.6 %	+5.9 %	+36.0 %	-2.3 %	+9.4 %

Modal Split

	Road	Rail	Int.water-ways	Pipelines
1970	15.4%	77.3%	2.8%	4.6%
1980	22.8%	67.8%	2.5%	6.9%
1985	25.8%	65.0%	2.4%	7.0%
1989	27.1%	62.9%	2.7%	7.3%
1990	31.3%	59.1%	2.5%	7.1%
1994	39.6%	50.8%	2.1%	7.6%
1995	41.5%	49.2%	2.6%	6.8%

Goods Transport		Road											1000 mio tkm		8.2	
	BG	CS	CZ	SK	EST	H	LT	LV	PL	RO	SLO	CEC	1970=	% of all		
	(1)												100	tkm		
1970	7.0	10.1			2.4	5.8	3.4	2.9	15.8	5.2	2.1	54.6	100	15.4		
1980	13.1	21.3			4.2	11.4	6.9	5.1	44.6	11.8	3.9	122.3	224	22.8		
1985	13.5	21.5			4.4	12.7	7.4	5.6	36.6	27.9	4.7	134.2	246	25.6		
1989	15.1	23.2			4.8	14.5	8.1	6.0	38.4	30.0	4.6	144.8	265	27.1		
1990	13.8	23.3			4.5	14.3	7.3	5.9	40.3	29.0	4.5	142.8	262	31.3		
1991	8.0	17.4			3.8	14.0	7.0	4.9	39.6	20.7	4.3	119.8	219	33.1		
1992	7.0	14.0			1.5	12.8	5.0	2.5	42.0	15.7	2.8	103.3	189	33.7		
1993	8.5		13.0	5.5	1.1	13.4	6.9	1.3	40.7	15.4	2.8	108.5	199	36.1		
1994	10.0		22.7	4.9	1.4	13.0	4.6	1.4	45.4	18.3	2.4	124.1	227	39.6		
1995	11.0		31.3	5.2	1.5	13.0	5.2	1.8	51.1	19.7	2.4	142.3	261	41.5		

Source : ECMT, Eurostat, national statistics

estimates in italic

(1) Bulgarian transport statistics often indicate only figures for public transport (1.96 bio tkm in 95)

Goods Transport		Railways											1000 mio tkm		8.3	
	BG	CS	CZ	SK	EST	H	LT	LV	PL	RO	SLO	CEC	1970= 100	% of all tkm		
1970	13.9	55.9			5.1	19.8	13.6	15.5	99.3	48.1	3.3	274.3	100	77.3		
1980	17.7	66.2			5.9	24.4	18.2	17.6	134.7	75.5	3.9	364.2	133	67.8		
1985	18.2	66.1			6.5	21.8	20.9	19.9	118.9	64.1	4.3	340.6	124	65.0		
1989	17.0	66.2			9.6	19.3	21.8	21.1	109.6	67.1	4.2	335.9	122	62.9		
1990	14.1	59.4			7.0	16.5	19.3	18.5	81.8	48.8	4.2	289.5	98	59.1		
1991	8.7	45.8			6.6	11.6	17.8	16.7	64.0	32.5	3.3	206.8	75	57.2		
1992	7.8	44.0			3.4	9.8	11.3	10.1	57.0	24.2	2.6	170.2	62	55.5		
1993	7.7		25.2	13.9	3.7	7.1	9.9	9.9	63.3	21.9	2.3	164.8	60	54.8		
1994	7.8		22.8	12.3	3.3	6.8	8.0	9.5	64.7	21.6	2.3	169.1	58	50.8		
1995	8.6		22.6	13.7	3.6	7.5	7.7	9.8	68.2	24.0	2.9	168.5	61	49.2		

Source : UIC, ECMT

estimates in italic

Goods Transport		Inland Waterways											1000 mio tkm	8.4
	BG	CS	CZ	SK	EST	H	LT	LV	PL	RO	SLO	CEC	1970= 100	% of all tkm
1970	1.83	2.43			0.01	1.76	0.12	0.05	2.30	1.35	0.00	9.9	100	2.8
1980	2.61	3.59			0.01	2.15	0.15	0.09	2.33	2.35	0.00	13.3	135	2.5
1985	2.00	4.38			0.01	2.14	0.17	0.30	1.41	2.35	0.00	12.7	129	2.4
1989	1.95	5.10			0.01	2.11	0.17	0.30	1.19	3.70	0.00	14.5	147	2.7
1990	1.61	4.20			0.00	2.04	0.16	0.29	1.03	2.09	0.00	11.4	116	2.5
1991	1.02	3.89			0.00	1.72	0.14	0.34	0.74	2.03	0.00	9.9	100	2.7
1992	0.84	2.98			0.00	1.60	0.05	0.40	0.75	1.89	0.00	8.5	86	2.8
1993	0.46		1.26	0.84	0.00	1.62	0.05	0.00	0.66	1.59	0.00	6.5	66	2.2
1994	0.36		1.19	0.85	0.00	1.35	0.03	0.00	0.79	1.90	0.00	6.5	66	2.1
1995	0.73		1.33	1.47	0.00	1.26	0.02	0.00	0.88	3.11	0.00	6.8	89	2.6

Source : ECMT, national statistics

estimates in italic

Goods Transport		Pipelines											1000 mio tkm		8.5	
	BG	CS	CZ	SK	EST	H	LT	LV	PL	RO	SLO	CEC	index	% of all		
													1970=	tkm		
1970	0.0	6.4			0.0	1.0	0.0	0.0	7.0	1.8	0.0	16.2	100	4.6		
1980	0.8	9.8			0.0	4.4	0.0	0.0	17.1	5.2	0.0	37.2	230	6.9		
1985	1.0	9.0			0.0	4.9	0.0	0.0	17.0	4.8	0.0	36.7	226	7.0		
1989	0.9	8.5			0.0	5.0	0.0	0.0	17.7	6.7	0.0	38.7	239	7.3		
1990	0.6	7.5			0.0	5.2	0.0	0.0	13.9	5.1	0.0	32.3	199	7.1		
1991	0.5	6.2			0.0	5.0	0.0	0.0	10.4	3.2	0.0	25.2	155	7.0		
1992	0.3	5.3			0.0	4.3	0.0	0.0	11.9	2.6	0.0	24.4	151	8.0		
1993	0.3		2.0	0.0	0.0	4.1	0.0	0.0	12.2	2.5	0.0	21.1	130	7.0		
1994	0.4		2.2	0.0	0.0	4.2	0.0	0.0	14.3	2.8	0.0	23.8	147	7.6		
1995	0.4		2.3	0.0	0.0	4.1	0.0	0.0	13.5	2.9	0.0	23.3	144	6.8		

Source :ECMT, national statistics

estimates in italic

LT: 2 000 mio tkm transit traffic in 1995

Passenger Transport		Railways										1000 mio pkm		8.6
	BG	CS	CZ	SK	EST	H	LT	LV	PL	RO	SLO	CEC	index 1970 =100	
1970	6.2	20.5			1.2	15.2	2.1	3.8	36.9	17.8	1.5	105.2	100	
1980	7.1	18.0			1.6	13.7	3.3	4.8	46.3	23.2	1.4	119.4	113	
1985	7.8	19.8			1.6	9.6	3.4	5.2	52.0	31.1	1.7	132.2	126	
1989	7.6	19.7			1.6	9.6	3.5	5.6	55.9	35.5	1.4	140.3	133	
1990	7.8	19.4			1.5	9.2	3.6	5.4	50.4	30.6	1.4	129.3	123	
1991	4.9	19.2			1.3	7.6	3.2	3.9	40.1	25.4	0.8	106.4	101	
1992	5.4	16.9			1.0	6.9	2.7	3.7	32.6	24.3	0.5	94.0	89	
1993	5.8		8.5	4.6	0.7	6.5	2.7	2.4	24.7	19.4	0.6	75.9	72	
1994	5.1		8.5	4.5	0.5	6.4	1.6	1.8	21.8	18.3	0.6	69.1	66	
1995	4.7		8.0	4.2	0.4	6.2	1.1	1.4	21.0	18.9	0.6	66.5	63	

Source : UIC, ECMT (70-80 results)

Cars												vehicle stock in mio	8.7
	BG	CS	CZ	SK	EST	H	LT	LV	PL	RO	SLO	CEC	index 1970=100
1970	0.16	1.00			0.03	0.24	0.05	0.04	0.48	0.04	0.18	2.2	87
1980	0.82	2.12			0.13	1.11	0.25	0.17	2.63	0.24	0.42	7.9	311
1985	1.06	2.73			0.18	1.44	0.34	0.22	3.67	0.95	0.50	11.1	438
1989	1.27	3.12			0.23	1.73	0.45	0.27	4.85	1.22	0.55	13.7	541
1990	1.32	3.24			0.24	1.94	0.49	0.28	5.26	1.29	0.58	14.6	579
1991	1.36	3.34			0.26	2.11	0.53	0.33	6.11	1.43	0.59	16.1	635
1992	1.41	3.48			0.28	2.26	0.57	0.35	6.51	1.59	0.61	17.0	674
1993	1.51		2.69	0.99	0.32	2.09	0.60	<u>0.39</u>	6.77	1.79	0.63	17.8	703
1994	1.59		2.97	0.99	0.34	2.18	0.65	0.25	7.15	2.02	0.66	18.8	743
1995	1.65		3.11	1.02	0.38	2.25	0.72	0.33	7.52	2.20	0.70	19.9	785

Source : Eurostat, ECMT, national statistics

estimates in italic

underlined: change in times series

(1) change in vehicle register, vehicle stock overestimated before 1994

Traffic at selected major airports

Million passengers

		1995	1996	growth 1996
Prague	<i>CZ</i>	3.21	3.80	+ 18.3 %
Budapest	<i>H</i>	2.94	3.31	+ 12.9 %
Warsaw	<i>PL</i>	2.38	2.75	+ 15.0 %
Bucarest	<i>RO</i>	1.46	1.40	- 4.0 %
Sofia	<i>BG</i>	1.00	1.10	+ 9.6 %
Ljubljana	<i>SLO</i>	0.64	0.67	+ 4.7 %
Riga	<i>LV</i>	0.51	0.51	+ 0.3 %
Tallin	<i>EST</i>	0.37	0.43	+ 18.0 %
Vilnius	<i>LT</i>	0.35	0.37	+ 4.8 %
Bratislava	<i>SK</i>	0.21	0.27	+ 27.8 %

Source: Airport Council International

Traffic at selected seaports

Million tons loaded/unloaded

		1993	1994	1995	growth 1996
Constanta	<i>RO</i>	26.3	29.9	34.4	+ 15.0 %
Ventspils	<i>LV</i>	22.4	27.7	29.6	+ 6.0 %
Gdansk	<i>PL</i>	23.0	22.1	18.3	- 17.2 %
Bourgas	<i>BG</i>	13.6	14.3	17.4	+ 21.7 %
Szczecin	<i>PL</i>	14.4	15.7	15.6	- 0.6 %
Klaipeda	<i>LT</i>	7.4	14.5	12.8	- 11.7 %
Tallinn	<i>EST</i>	12.5	11.7	13.0	+ 11.3 %
Gdynia	<i>PL</i>	7.8	8.0	7.6	- 5.0 %
Riga	<i>LV</i>	4.7	6.0	7.5	+ 25.0 %
Koper	<i>SLO</i>	5.2	5.2	6.8	+ 29.1 %

Source: ISL, national statistics

External Trade EU 15 - CEC												8.9
1000 tonnes												
	EU 15 imports from						EU 15 exports to					
	88	90	92	93	94	95	88	90	92	93	94	95
Estonia	:	:	922	1 858	2 376	3 934	:	:	628	627	775	1 205
Latvia	:	:	3 714	4 778	6 555	7 705	:	:	602	353	585	1 182
Lithuania	:	:	3 712	5 870	5 926	4 372	:	:	779	645	424	578
Poland	19 690	26 997	36 473	39 837	46 782	43 819	2 560	3 490	9 332	11 223	8 530	8 817
Czech Rep.	10 987	11 203	24 358	19 644	22 605	22 273	1 124	1 482	4 508	3 931	4 734	5 649
Slovak Rep.	<i>inc CZ</i>	<i>inc CZ</i>	<i>inc CZ</i>	4 334	5 743	6 570	<i>inc CZ</i>	<i>inc CZ</i>	<i>inc CZ</i>	893	1 137	1 564
Hungary	5 715	6 343	6 912	6 346	7 382	8 319	1 420	1 604	2 223	3 186	3 680	3 527
Slovenia	:	:	1 286	2 073	2 397	2 508	:	:	1 738	2 805	3 637	3 402
Romania	8 604	4 109	2 243	2 249	3 738	4 778	739	2 443	3 186	3 740	2 222	2 780
Bulgaria	1 030	1 471	1 813	1 769	2 441	3 932	935	478	967	1 383	1 179	1 053
total 10 countries	46 026	50 123	81 434	88 760	105 946	108 210	6 778	9 496	23 962	28 786	26 902	29 757
Source : Eurostat												

Comparison CEC-Mediterranean countries 8.10

1994/95

population	natural	GDP	GDP (PPS)
million	population	Bio ECU	per capita
	growth %		EU=100

Bulgaria	8.4	-0.5	8.6	24
Czech Rep.	10.3	-0.2	30	49
Slovak Rep.	5.4	0.2	10.3	34
Estonia	1.5	-0.5	3.8	25
Hungary	10.2	-0.3	34.5	33
Lithuania	3.7	0	4.4	18
Latvia	2.5	-0.7	4.9	18
Poland	38.6	0.1	77.8	30
Romania	22.7	-0.2	25.3	22
Slovenia	2.0	0	11.7	34*
CEC	105.3	-0.1	211.3	29
Algeria	27.9	2.3	35	27
Cyprus	0.7	0.9	6.3	75
Egypt	59.2	2.1	36.1	20
Israel	5.6	1.5	64.8	84
Jordan	5.4	3.2	5.1	22
Lebanon	3.0	2	7.7	25
Malta	0.4	0.6	2.1	55
Morocco	26.5	2	25.9	20
Palest. Auth.	2.4	3	n.d.	n.d.
Syria	14.7	3.6	12.5	25
Tunisia	8.9	1.8	13.2	28
Turkey	61.6	2	109.2	26
	216.3	2.2	317.9	25

* Slovenia: PPS ca. 50 according to other sources

Source : UN, Eurostat, World Bank, PPS=Purchasing Power Standards

Chapter 9

USA

USA

Goods Transport
 1000 mio tkm

9.1

	Road*	Rail**	Inl. Water-ways	Pipelines	Total
1970	602	1117	343	630	2892
1975	863	1101	383	740	2867
1980	811	1342	422	859	3434
1985	891	1280	410	824	3405
1990	1074	1510	516	853	3953
1994	1326	1753	520	883	4462
1995	1345	1906	534	675	4660
1970-95	+123.4 %	+70.6 %	+55.7 %	+38.9 %	+73.1 %

Source : US Department of Transport

* intercity truck traffic ** class I railways

Average Annual Growth Rates

	Road	Rail	Inl. Water-ways	Pipelines	Total
1970-94	+3.3 %	+1.9 %	+1.7 %	+1.4 %	+2.2 %
1970-80	+3.0 %	+1.9 %	+2.1 %	+3.1 %	+2.5 %
1980-90	+2.8 %	+1.2 %	+2.0 %	-0.1 %	+1.4 %
1990-95	+4.6 %	+4.8 %	+0.7 %	+0.5 %	+2.5 %
1995	+1.4 %	+8.7 %	+2.8 %	+1.3 %	+4.4 %

Modal Split

	Road	Rail	Inl. Water-ways	Pipelines
1970	22.4%	41.5%	12.7%	23.4%
1975	23.1%	38.4%	12.7%	25.8%
1980	23.6%	39.1%	12.3%	25.0%
1985	26.2%	37.6%	12.0%	24.2%
1990	27.2%	38.2%	13.1%	21.6%
1995	28.9%	40.9%	11.5%	18.8%

1000 mio pkm

	Private Car	Railway	Intercity Bus*	Urban** Transport	Air	Total
1970	2950	17	41	64	189	3261
1975	3162	14	41	64	237	3518
1980	3219	18	44	64	353	3698
1985	3448	18	38	64	467	4035
1990	3876	21	37	66	578	4378
1994	4439	22	45	64	641	5211
1995	4561	22	47	64	667	5361
1970-95	+ 54.6 %	+ 29.4 %	+ 14.6 %	+ 0 %	+ 252.9 %	+ 64.4 %

Source : US Department of Transport

* traffic by school bus was ca. 150 000 mio pkm in 1995

** public transport (excl. railways) in urban areas (estimate for 70-75 and 95)

Average Annual Change

	Private Car	Railway	Intercity Bus	Urban Transport	Air	Total
1970-95	+1.8 %	+1.0 %	+0 %	+0 %	+5.2 %	+2.0 %
1970-80	+0.9 %	+0.2 %	+0.8 %	+0 %	+6.5 %	+1.3 %
1980-90	+1.3 %	+1.8 %	-1.7 %	+0.3 %	+5.1 %	+1.7 %
1990-95	4,8 %*	+1.2 %	+4.7 %	-1.2 %	+2.6 %	4,4 %*
1995	+2.7 %	+0 %	+2.8 %	+0 %	+3.8 %	+2.9 %

* change in series (private car transport)

growth rate 1995 for urban transport estimated

Modal Split

	Private Car	Railways	Intercity Bus	Urban Transport	Air
1970	90.5%	0.5%	1.3%	2.0%	5.8%
1975	89.9%	0.4%	1.2%	1.8%	6.7%
1980	87.0%	0.5%	1.2%	1.7%	9.5%
1985	85.5%	0.4%	0.9%	1.6%	11.6%
1990	64.0%	0.5%	0.8%	1.5%	13.2%
1995	85.1%	0.4%	0.9%	1.2%	12.4%

Chapter 10

World

Comparison EU 15 - World

10.1

1995

	World	EU 15	EU % of World
Population, million	5700	372	6.5
Population growth, million, (%)	80 (1.5%)	1 (0.3%)	1.2
GDP, trillion ECU	20	6.5	33
GDP per capita, ECU	3500	17500	500
Exports total, bio ECU	3650	1570	43
Exports without intra-EU, bio ECU	2650	570	22
Passenger cars, million	490	159	32
Motorization cars/1000 persons	85	430	500
Commercial vehicles, million	150	18	12
Freight transport rail, billion tkm	6000	220	4
Passenger transport rail, billion pkm	1800	270	15
Tons loaded/unloaded in ports	9000	2500	28
Maritime transport, billion tkm	38 000	11 500*	30
CO2-Emissions (fossil fuels) bio t	21	3.1	15

*estimate, ca. 30% of world sea transport is EU-related, of which intra-EU 400 bio tkm

SOURCES: UN, IMF, Eurostat, UIC

Statistical Sources

1. International Statistical Publications

Eurostat

Bâtiment Jean Monnet, Rue Alcide de Gasperi, L-2920 Luxembourg

Transport- Annual Statistics

Carriage of Goods- Railways/Road/Inland waterw.

United Nations UN-ECE

Palais des Nations, CH-1200 Genève

Annual Bulletin of Transport Statistics for Europe

Statistics of Road Accidents in Europe

European Conference of Ministers of Transport (ECMT)

2, rue André-Pascal, F-75775 Paris Cedex

Statistical Trends in Transport

Trends in the Transport Sector

International Union of Railways (UIC)

14, rue Jean-Rey, F-75015 Paris

International Railway Statistics

International Road Federation (IRF)

63, rue Lausanne, CH-1200 Genève

World Road Statistics

International Air Transport Association (IATA)

POB 315, CH-1215 Geneva Airport

World Air Transport Statistics

Institute for Shipping Economics and Logistics (ISL)

Universitätsallee GW 1 Block A, D-28359 Bremen

Shipping Statistics Yearbook

Union Internationale des Sociétés

de Transport Combiné Rail-Route (UIRR)

Avenue du Port, 100, bte3, B-1210 Bruxelles

UIRR Report

Association of European Airlines (AEA)

Avenue Louise 350, B-1050 Brussels

Yearbook

2. National Statistical Publications

Belgique/België

Ministère des Communications
Rue d'Arlon 104, B-1040 Bruxelles

Les transports en Belgique

Danmark

Danmark Statistik
Sejrogade 11, DK-2100 København

Transportstatistik

Deutschland

Deutsches Institut für Wirtschaftsforschung DIW
Königin-Luisestr. 5, D-14195 Berlin

Verkehr in Zahlen

Ellas (Greece)

National Statistical Service of Greece
14-16 Lycourgou Street, GR-Athens 112

Statistical Yearbook of Greece

Espana

Ministerio de Fomento, Centro de Publicaciones
Paseo de la Castellana Pl. 2a, E-28071 Madrid

Los Transportes y las Comunicaciones

France

Ministère des Transports et du Tourisme,
Service Economique et Statistique (SES)
Tour Pascal, F-92055 Paris-La Défense Cedex

Mémento de Statistiques des Transports

Ireland

Central Statistical Office
Ardee Road, IRL-Dublin 6

Statistical Abstract of Statistics

Italia

Ministero dei Trasporti e della Navigazione
Istituto Poligrafico e Zecca dello Stato
Piazza della Croce, I-00100 Roma

Conto nazionale dei trasporti

Luxembourg

Service central de la statistique et des études économiques
19-21, Boulevard Royal, L-2449 Luxembourg

Annuaire Statistique

Nederland

Centraal Bureau voor de Statistiek (CBS)
Kloosterweg 1, PB 4481, NL-6401 CZ Heerlen

Zakboek Verkeer en Vervoer

Österreich

Österreichisches Statistisches Zentralamt
Hintere Zollamtstr. 2b, POB 9000, A-1033 Wien

Statistisches Jahrbuch Österreich

Portugal

Instituto Nacional de Estatística (INE)
Av. Antonio de Almeida, P-1078 Lisboa Cedex

Estatísticas dos Transportes e Comunicações

Suomi/Finland

Statistics Finland
POB 3B, FIN-00022 Statistics Finland

Transport Statistical Yearbook for Finland

Sverige

Statistiska Centralbyrån
Klostergatan 23, S-701 89 Örebro

Statistical Yearbook

United Kingdom

Department of Transport/ HM Stationary Office
Publications Centre, POB 276, London SW8 5DT

Transport Statistics Great Britain

Schweiz

Generalsekretariat EVED, Dienst für Gesamtverkehrsfragen
Kochergasse 10, CH-3003 Bern

Alpenquerender Güterverkehr auf Strasse und Schiene

For further information please contact:

Eurostat, Unit C-2 (transport statistics)
Jean Monnet Building, office C-5/008
L- 2920 Luxembourg

or:

European Commission, DG VII
Unit E-1
Beaulieu 31, office 5/30
B-1160 Brussels

e-mail: figures-transport@dg7.cec.be

European Commission

EU transport in figures — Statistical pocketbook (second issue 1997)

Luxembourg: Office for Official Publications of the European Communities

1997 — 97 pp. — 10.5 x 21 cm

ISBN 92-828-0959-5



OFFICE FOR OFFICIAL PUBLICATIONS
OF THE EUROPEAN COMMUNITIES

L-2985 Luxembourg

ISBN 92-828-0959-5



9 789282 809594 >