

CONSUMER PRICE INDEX



RAPID INFORMATION

THE CONSUMER PRICE INDEX IN FEBRUARY 1985

The consumer price index for the EC as a whole rose by 0.6 % between January and February 1985. This was the second consecutive month in which the increase was higher than the monthly average increase during 1984.

These increases are largely attributable to higher prices for fresh fruit and vegetables, caused by the weather in these two months and to rises in prices of oil products invoiced in Dollars, for which the exchange rates went up sharply during this period.

The rates of increase by country in February are as follows: Netherlands 0.3 %, Germany (FR) 0.4 %, France 0.5 %, Luxemburg 0.6 %, Denmark 0.7 %, United Kingdom 0.8 %, Belgium 1.0 %, Italy 1.0 %.

Only Greece reported a slight decrease (-0.2 %), resulting entirely from the winter sales of clothing and footwear.

The quarterly index for Ireland went up by 1.9 % between mid-November 1984 and mid-February 1985, which means an average increase of about 0.6 % per month.

The inflation rate for this country over 12 months (February 1985 compared to February 1984) is 6.2 %, whereas this figure was 10.2 % in February 1984, 12.5 % in February 1983 and 18.9 % in February 1982.

For the Community as a whole, the inflation over-the-year as measured by comparing the CPI for February 1985 with that for February 1984 stood at 5.6 %, remaining thus the same as the average rate for 1984.

For the individual countries these rates are as follows: Germany (FR) 2.3 %, Netherlands 2.3 %; United Kingdom 5.4 %, Belgium 5.4 %, Denmark 5.4 %, Ireland 6.2 %, France 6.4 %, Italy 9.0 %, Greece 18.6 %.

N.B. The revised index for Luxemburg is not yet available at base 1980=100

2 □ 1985

CONSUMER PRICES

A

PRIX A LA CONSOMMATION

GENERAL INDEX

INDICE GENERAL

	EUR 10	BR DEUTSCH LAND	FRANCE	ITALIA	NEDER= LAND	BELGIQUE BELGIE	LUXEM= BOURG	UNITED KINGDOM	IRELAND	DANMARK	ELLAS	ESPAÑA	PORTUGAL	USA	CANADA	JAPAN
	PRICE INDICES								1980 = 100		INDICES DE PRIX					
1981 O	111.7	106.3	113.4	117.8	106.7	107.6	108.1	111.9	120.4	111.7	124.5	114.6	120.0	110.3	112.5	104.9
1982 O	123.0	111.9	126.8	137.2	112.8	117.0	118.2	121.5	141.1	123.0	150.5	131.0	146.9	117.1	124.6	107.7
1983 O	132.4	115.6	139.0	157.3	115.9	126.0	128.4	127.1	155.8	131.5	181.4	147.0	184.3	120.9	131.8	109.7
1984 O	140.7	118.4	149.3	174.3	119.6	134.0	135.7	133.4	169.2	139.8	214.6	163.5	238.3	126.1	137.6	112.1
1984 J	137.1	117.5	144.5	167.4	117.8	130.6	134.0	129.9	:	135.6	198.3	157.6	214.5	123.7	135.2	110.6
1984 F	137.9	117.8	145.4	169.4	118.3	131.6	134.9	130.5	165.1	137.1	199.2	158.2	218.0	124.2	136.0	111.3
1984 M	138.4	117.9	146.4	170.6	118.9	132.2	134.7	130.9	:	137.6	205.5	159.6	226.3	124.5	136.3	111.6
1984 A	139.5	118.1	147.3	171.9	119.4	133.1	135.5	132.6	:	138.0	209.3	160.5	230.7	125.1	136.7	111.9
1984 M	140.1	118.2	148.1	173.0	119.4	133.4	136.1	133.1	168.8	139.4	212.4	161.3	228.6	125.5	136.9	112.7
1984 J	140.6	118.6	148.8	174.0	119.4	133.7	135.3	133.4	:	140.2	216.9	162.5	235.9	125.9	137.5	111.8
1984 J	140.8	118.4	149.8	174.4	119.3	134.5	135.6	133.3	:	139.9	215.0	165.0	242.3	126.3	138.2	112.0
1984 A	141.4	118.2	150.6	175.3	119.4	135.0	135.9	134.5	170.9	140.5	213.9	166.1	246.8	126.8	138.2	111.0
1984 S	142.0	118.3	151.3	176.7	119.9	135.4	135.9	134.8	:	141.5	220.1	166.4	247.5	127.4	138.4	112.8
1984 O	143.0	119.0	152.3	178.4	120.9	136.0	136.8	135.6	:	142.1	225.5	167.4	249.7	127.7	138.6	113.7
1984 N	143.5	119.2	152.8	179.8	121.0	136.1	136.9	136.1	172.1	143.1	228.1	168.2	253.8	127.7	139.5	113.0
1984 D	143.8	119.3	153.1	180.9	120.9	136.4	136.3	135.9	:	142.8	231.4	169.5	256.3	127.8	139.6	113.2
1985 J	144.7	120.0	153.9	182.9	120.6	137.2	136.7	136.4	:	143.5	236.7	172.6	267.3	128.1	140.2	113.8
1985 F	145.5	120.5	154.7P	184.7E	121.0	138.7	137.5	137.5	175.3	144.5E	236.2	:	:	128.6	141.0	113.0
	RATE OF INCREASE OVER ONE MONTH (IRELAND 3 MONTHS)								(T/T-1)		TAUX DE CROISSANCE SUR UN MOIS (IRLANDE 3 MOIS)					
84J/83D	0.6	0.4	0.7	1.2	0.2	0.9	0.6	-0.1	:	0.3	1.2	1.4	1.5	0.6	0.5	0.3
84 F/J	0.6	0.3	0.6	1.2	0.4	0.8	0.6	0.4	2.4	1.1	0.4	0.4	1.7	0.5	0.6	0.6
84 M/F	0.5	0.1	0.7	0.7	0.5	0.4	0.1	0.3	:	0.4	3.2	0.9	3.8	0.2	0.2	0.3
84 A/M	0.7	0.2	0.6	0.8	0.4	0.7	0.6	1.3	:	0.3	1.9	0.6	1.9	0.5	0.2	0.3
84 M/A	0.4	0.1	0.5	0.6	0.0	0.2	0.4	0.4	2.2	1.0	1.5	0.5	-0.9	0.3	0.2	0.7
84 J/M	0.4	0.3	0.5	0.6	0.0	0.3	-0.6	0.3	:	0.6	2.1	0.7	3.2	0.3	0.4	-0.8
84 J/J	0.1	-0.2	0.7	0.2	-0.1	0.5	0.2	-0.1	:	-0.2	-0.9	1.5	2.7	0.3	0.6	0.2
84 A/J	0.4	-0.2	0.5	0.5	0.1	0.4	0.2	0.9	1.2	0.4	-0.5	0.7	1.9	0.4	0.0	-0.9
84 S/A	0.4	0.1	0.5	0.8	0.4	0.3	0.0	0.2	:	0.7	2.9	0.2	0.3	0.5	0.1	1.6
84 O/S	0.7	0.6	0.7	1.0	0.8	0.5	0.6	0.6	:	0.4	2.5	0.6	0.9	0.3	0.2	0.8
84 N/S	0.4	0.2	0.3	0.6	0.1	0.0	0.1	0.3	0.7	0.7	1.2	0.4	1.6	0.0	0.6	-0.6
84 D/N	0.2	0.1	0.2	0.7	-0.2	0.2	-0.4	-0.1	:	-0.2	1.4	0.7	1.0	0.1	0.1	0.2
85J/84D	0.6	0.6	0.5	1.1	-0.2	0.6	0.3	0.4	:	0.5	2.3	1.8	4.3	0.2	0.4	0.5
85 F/J	0.6	0.4	0.5	1.0	0.3	1.0	0.6	0.8	1.9	0.7	-0.2	:	:	0.4	0.6	-0.7
	RATE OF INCREASE OVER 12 MONTHS								(T/T-12)		TAUX DE CROISSANCE SUR 12 MOIS					
84/83 J	7.0	2.7	9.0	12.3	3.1	6.9	7.4	5.1	:	5.4	20.5	11.9	30.7	4.1	5.0	1.8
84/83 F	7.0	2.9	8.9	12.1	3.3	7.1	7.8	5.1	10.2	6.4	18.8	11.8	30.0	4.6	5.5	2.9
84/83 M	7.0	3.1	8.6	11.9	3.7	7.1	7.5	5.2	:	7.0	16.9	12.0	31.8	4.7	4.7	2.5
84/83 A	6.7	3.0	7.9	11.6	3.6	7.5	7.8	5.2	:	6.6	17.1	11.2	31.3	4.5	4.9	2.4
84/83 M	6.6	2.8	7.8	11.3	3.6	7.2	7.7	5.1	9.7	6.5	16.8	11.3	30.4	4.2	4.8	2.0
84/83 J	6.6	2.8	7.7	11.3	3.5	6.8	6.7	5.1	:	6.9	19.1	11.4	32.1	4.2	4.1	1.9
84/83 J	6.1	2.2	7.5	10.7	2.8	6.3	5.4	4.5	:	6.5	19.2	12.8	32.9	4.1	4.2	2.6
84/83 A	6.0	1.7	7.4	10.7	2.7	5.7	4.9	5.0	8.0	6.5	18.9	12.0	31.2	4.2	3.7	1.9
84/83 S	5.7	1.5	7.1	10.1	2.7	5.3	3.9	4.7	:	6.2	17.8	11.3	27.1	4.2	3.8	2.3
84/83 O	5.8	2.1	7.0	9.5	3.0	5.8	3.6	5.0	:	6.0	18.4	10.5	25.8	4.2	3.4	2.2
84/83 N	5.6	2.1	6.9	9.2	2.9	5.3	3.2	4.9	6.8	5.8	18.3	9.9	24.9	4.0	4.0	2.2
84/83 D	5.5	2.0	6.7	9.4	2.8	5.3	2.3	4.6	:	5.6	18.1	9.0	21.3	4.0	3.8	2.6
85/84 J	5.6	2.1	6.5	9.3	2.4	5.0	:	5.0	:	5.8	19.4	9.5	24.6	3.6	3.7	2.9
85/84 F	5.5	2.3	6.4	9.0	2.3	5.3	:	5.4	6.2	5.4	18.6	:	:	3.5	3.7	1.5

VERBRAUCHERPREISE
GESAMTINDEX

CONSUMER PRICES
GENERAL INDEX

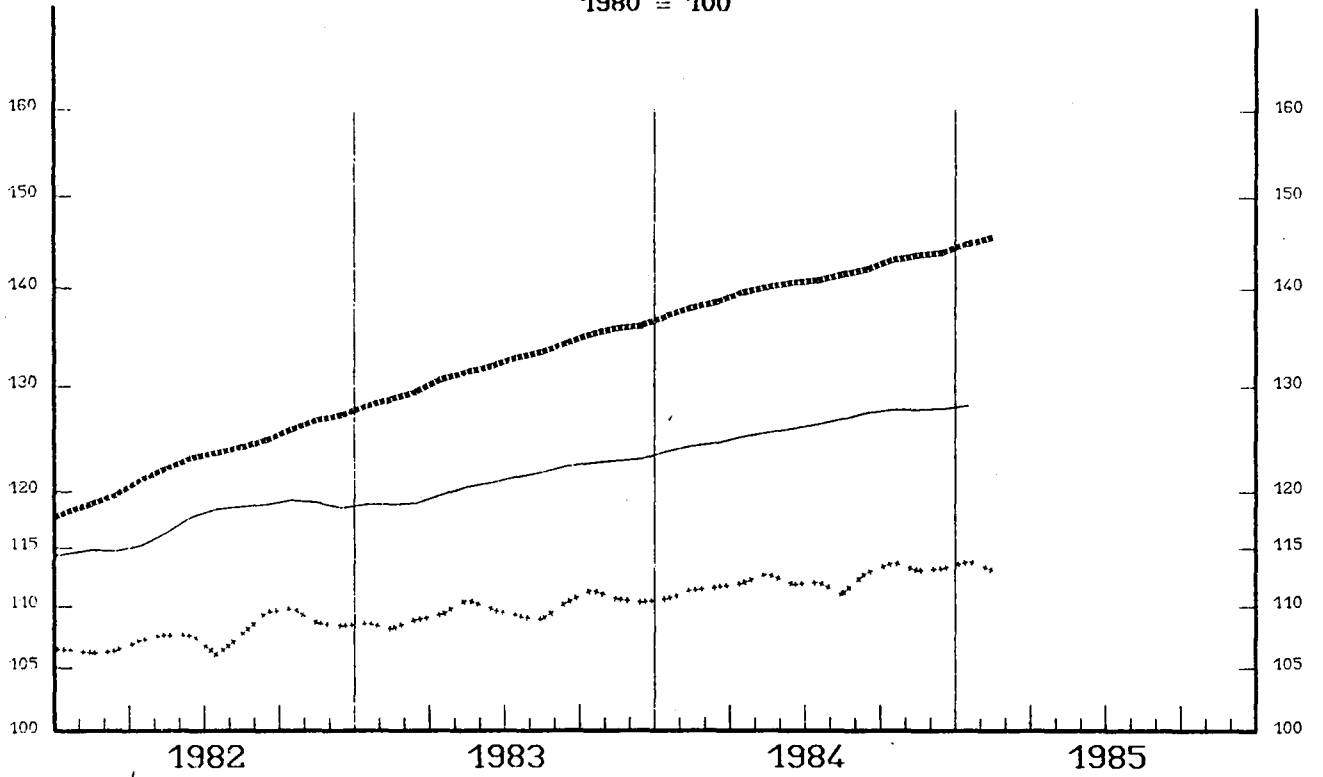
PRIX A LA CONSOMMATION
INDICE GENERAL

— USA

..... EUR 10

..... JAPAN

1980 = 100



EINFACH-LOGARITHMISCHE SKALA

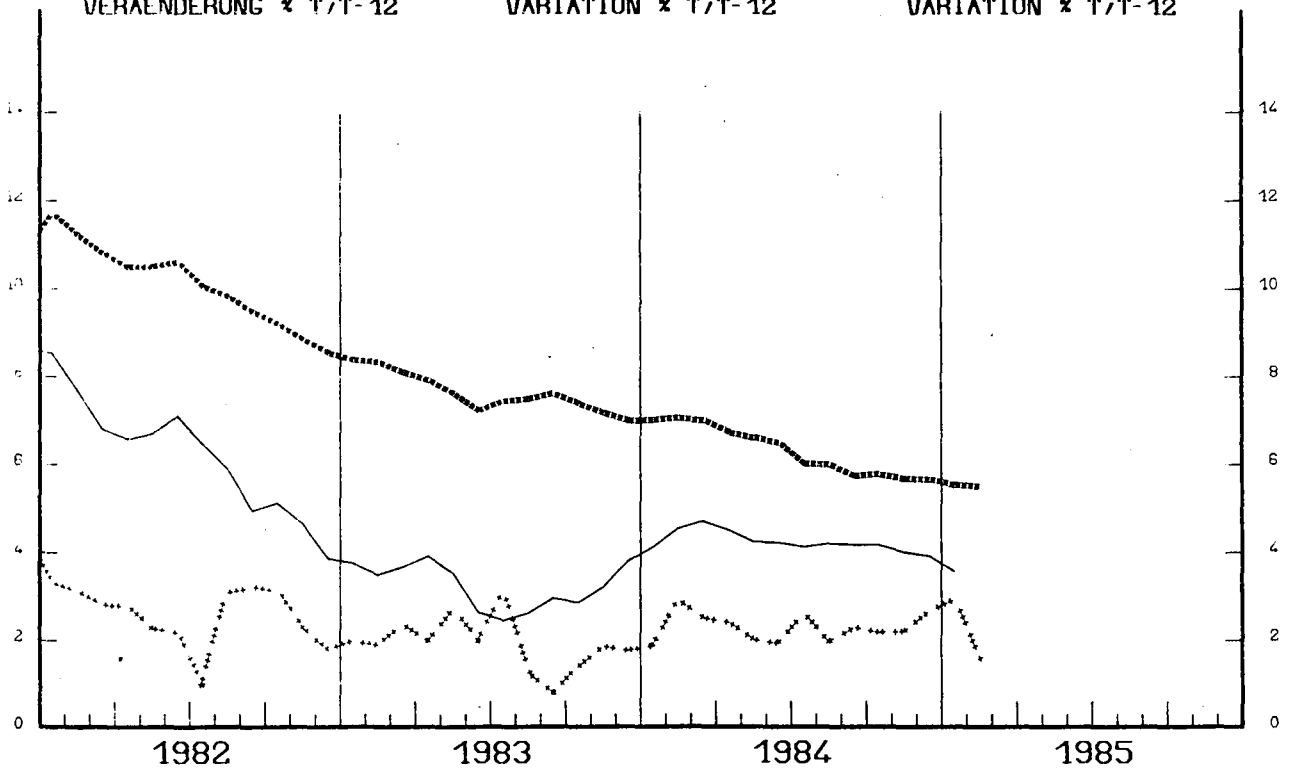
SEMI-LOGARITHMIC SCALE

ECHELLE SEMI-LOGARITHMIQUE

VERÄNDERUNG $\times T/T-12$

VARIATION $\times T/T-12$

VARIATION $\times T/T-12$



CONSUMER PRICES

PRIX A LA CONSOMMATION

GENERAL INDEX

INDICE GENERAL

	SWITZERLAND SUISSE SCWEIZ	AUSTRIA AUTRICHE OESTERREICH	NORWAY NORVEGE NORGE	SWEDEN SUEDE SVERIGE
	PRICE INDICES	1980 = 100		INDICES DE PRIX
1981 O	106.5	106.8	113.6	112.1
1982 O	112.5	112.6	126.5	121.7
1983 O	115.8	116.3	137.2	132.5
1984 O	119.2	122.9	145.7	143.2
1984 F	118.1	121.8	142.6	138.9
1984 M	118.9	122.2	144.2	140.9
1984 A	119.1	122.2	144.8	141.8
1984 M	118.8	121.9	145.0	142.8
1984 J	119.2	123.0	145.7	142.4
1984 J	119.0	122.7	146.3	142.8
1984 A	119.4	123.9	146.2	143.9
1984 S	119.3	123.7	147.3	144.8
1984 O	120.1	123.9	148.0	145.5
1984 N	120.7	124.2	148.2	146.4
1984 D	120.6	124.3	148.9	148.8
1985 J	121.8	125.3	150.0	149.6
1985 F	122.8	126.0	150.5	150.9
	RATE OF INCREASE OVER ONE MONTH	(T/T-1)	TAUX DE CROISSANCE SUR UN MOIS	
84J/83D	0.4	2.5	0.9	1.4
84 F/J	0.4	0.5	0.5	-0.4
84 M/F	0.6	0.3	1.1	1.4
84 A/M	0.2	0.0	0.4	0.6
84 M/A	-0.2	-0.3	0.1	-0.7
84 J/M	0.3	0.9	0.5	-0.3
84 J/J	-0.2	-0.2	0.4	0.3
84 A/J	0.4	0.9	-0.1	0.8
84 S/A	-0.1	-0.2	0.8	0.6
84 O/S	0.6	0.2	0.4	0.5
84 N/S	0.5	0.3	0.2	0.6
84 D/N	-0.1	0.1	0.4	1.6
85J/84D	1.0	0.8	0.7	0.5
85 F/J	0.8	0.5	0.3	0.9
	RATE OF INCREASE OVER 12 MONTHS	(T/T-12)	TAUX DE CROISSANCE SUR 12 MOIS	
84/83 J	2.6	5.6	6.4	8.2
84/83 F	2.9	5.7	6.5	7.8
84/83 M	3.4	5.8	6.6	9.0
84/83 A	3.2	5.9	6.6	8.8
84/83 M	2.9	5.9	6.6	9.0
84/83 J	2.8	6.3	6.4	8.0
84/83 J	2.8	5.6	6.1	7.4
84/83 A	2.9	6.0	6.2	7.8
84/83 S	2.7	5.6	6.1	7.7
84/83 O	3.1	5.2	6.1	7.3
84/83 N	3.0	5.3	6.0	7.3
84/83 D	2.9	5.0	5.9	8.2
85/84 J	3.5	3.4	5.7	7.3
85/84 F	4.0	3.4	5.5	8.6