

CONSUMER PRICE INDEX



RAPID INFORMATION

THE CONSUMER PRICE INDEX IN MARCH 1985

As in February, the CPI for the EC as a whole rose by 0.7% in March, continuing the trend of rather sensitive increases observed since the beginning of this year.

With the exceptions of Germany (+0.3%) and Luxembourg (+0.5%) the rates of increase were equal to or higher than the community average: France, Italy and the Netherlands all 0.7%, Belgium and Denmark both 0.8%, the United Kingdom 0.9% and Greece 2.9%.

A comparison of the rates of increase during the first quarter of this year with of the fourth quarter of 1984, shows that inflation has been speeding up since the beginning of this year in most of the EC countries.

For the EC as a whole prices rose by 2.0% during the first quarter of 1985 against 1.3% during the last quarter of 1984.

For the different countries the situation is as follows:

Germany	1.3 (0.0)	Luxembourg	1.5 (0.3)
France	1.8 (1.2)	United-Kingdom	2.1 (0.3)
Italy	3.0 (2.4)	Ireland	1.9 (0.7)
Netherlands	0.7 (0.8)	Denmark	1.9 (0.9)
Belgium	2.5 (0.7)	Greece	5.0 (5.1)

The applicant Member States also registered important increases since the beginning of this year: prices in Spain rose by 3.5% during the first quarter (Eurostat estimate) against 1.9% during the last quarter of 1984, whereas prices in Portugal rose by 8.8% from January to the end of March against 3.5% during the fourth quarter of 1984.

The rate of inflation over 12 months for EUR-10 was 5.9%; for the individual countries the rates were as follows:

Netherlands	2.4%	United Kingdom	6.0%
Germany (FR)	2.5%	Ireland	6.2%*
Luxembourg	3.9%	France	6.4%
Belgium	5.7%	Italy	9.3%
Denmark	5.7%	Greece	18.3%

* February 1985 compared to November 1984.

3 □ 1985

CONSUMER PRICES

A

PRIX A LA CONSOMMATION

GENERAL INDEX

INDICE GENERAL

	EUR 10	BR DEUTSCH LAND	FRANCE	ITALIA	NEDER= LAND	BELGIQUE BELGIE	LUXEM= BOURG	UNITED KINGDOM	IRELAND	DANMARK	ELLAS	ESPANA	PORTUGAL	USA	CANADA	JAPAN
	PRICE INDICES							1980 = 100			INDICES DE PRIX					
1981 O	111.7	106.3	113.4	117.8	106.7	107.6	108.1	111.9	120.4	111.7	124.5	114.6	120.0	110.3	112.5	104.9
1982 O	123.0	111.9	126.8	137.2	112.8	117.0	118.2	121.5	141.1	123.0	150.5	131.0	146.9	117.1	124.6	107.7
1983 O	132.4	115.6	139.0	157.3	115.9	126.0	128.4	127.1	155.8	131.5	181.4	147.0	184.3	120.9	131.8	109.7
1984 O	140.7	118.4	149.3	174.3	119.6	134.0	135.7	133.4	169.2	139.8	214.6	163.5	238.3	126.1	137.6	112.1
1984 F	137.9	117.8	145.4	169.4	118.3	131.6	134.9	130.5	165.1	137.1	199.2	158.2	218.0	124.2	136.0	111.3
1984 M	138.6	117.9	146.4	170.6	118.9	132.2	134.7	130.9	:	137.6	205.5	159.6	226.3	124.5	136.3	111.6
1984 A	139.5	118.1	147.3	171.9	119.4	133.1	135.5	132.6	:	138.0	209.3	160.5	230.7	125.1	136.7	111.9
1984 M	140.1	118.2	148.1	173.0	119.4	133.4	136.1	133.1	168.8	139.4	212.4	161.3	228.6	125.5	136.9	112.7
1984 J	140.6	118.6	148.8	174.0	119.4	133.7	135.3	133.4	:	140.2	216.9	162.5	235.9	125.9	137.5	111.8
1984 J	140.8	118.4	149.8	174.4	119.3	134.5	135.6	133.3	:	139.9	215.0	165.0	242.3	126.3	138.2	112.0
1984 A	141.4	118.2	150.6	175.3	119.4	135.0	135.9	134.5	170.9	140.5	213.9	166.1	246.8	126.8	138.2	111.0
1984 S	142.0	118.3	151.3	176.7	119.9	135.4	135.9	134.8	:	141.5	220.1	166.4	247.5	127.4	138.4	112.8
1984 O	143.0	119.0	152.3	178.4	120.9	136.0	136.8	135.6	:	142.1	225.5	167.4	249.7	127.7	138.6	113.7
1984 N	143.5	119.2	152.8	179.8	121.0	136.1	136.9	136.1	172.1	143.1	228.1	168.2	253.8	127.7	139.5	113.0
1984 D	143.8	119.3	153.1	180.9	120.9	136.4	136.3	135.9	:	142.8	231.4	169.5	256.3	127.8	139.6	113.2
1985 J	144.7	120.0	153.9	182.9	120.6	137.2	136.7	136.4	:	143.5	236.7	172.6	267.2	128.1	140.2	113.8
1985 F	145.7	120.5	154.7	185.1	121.0	138.7	137.6	137.5	175.3	144.4	236.2	173.8	274.5	128.6	141.0	112.9
1985 M	146.7	120.9	155.8P	186.4E	121.9	139.8	138.3	138.8	:	145.5E	243.0	:	278.9	:	141.4	113.4
	RATE OF INCREASE OVER ONE MONTH (IRELAND 3 MONTHS)							(T/T-1)		TAUX DE CROISSANCE SUR UN MOIS (IRLANDE 3 MOIS)						
84 F/J	0.6	0.3	0.6	1.2	0.4	0.8	0.6	0.4	2.4	1.1	0.4	0.4	1.7	0.5	0.6	0.6
84 M/F	0.5	0.1	0.7	0.7	0.5	0.4	0.1	0.3	:	0.4	3.2	0.9	3.8	0.2	0.2	0.3
84 A/M	0.7	0.2	0.6	0.8	0.4	0.7	0.6	1.3	:	0.3	1.9	0.6	1.9	0.5	0.2	0.3
84 M/A	0.4	0.1	0.5	0.6	0.0	0.2	0.4	0.4	2.2	1.0	1.5	0.5	-0.9	0.3	0.2	0.7
84 J/M	0.4	0.3	0.5	0.6	0.0	0.3	-0.6	0.3	:	0.6	2.1	0.7	3.2	0.3	0.4	-0.8
84 J/J	0.1	-0.2	0.7	0.2	-0.1	0.5	0.2	-0.1	:	-0.2	-0.9	1.5	2.7	0.3	0.6	0.2
84 A/J	0.4	-0.2	0.5	0.5	0.1	0.4	0.2	0.9	1.2	0.4	-0.5	0.7	1.9	0.4	0.0	-0.9
84 S/A	0.4	0.1	0.5	0.8	0.4	0.3	0.0	0.2	:	0.7	2.9	0.2	0.3	0.5	0.1	1.6
84 O/S	0.7	0.6	0.7	1.0	0.8	0.5	0.6	0.6	:	0.4	2.5	0.6	0.9	0.3	0.2	0.8
84 N/S	0.4	0.2	0.3	0.6	0.1	0.0	0.1	0.3	0.7	0.7	1.2	0.4	1.6	0.0	0.6	-0.6
84 D/N	0.2	0.1	0.2	0.7	-0.2	0.2	-0.4	-0.1	:	-0.2	1.4	0.7	1.0	0.1	0.1	0.2
85J/84D	0.6	0.6	0.5	1.1	-0.2	0.6	0.3	0.4	:	0.5	2.3	1.8	4.3	0.2	0.4	0.5
85 F/J	0.7	0.4	0.5	1.0	0.3	1.0	0.6	0.8	1.9	0.7	-0.2	0.7	2.7	0.4	0.6	-0.8
85 M/F	0.7	0.3	0.7	0.7	0.7	0.8	0.5	0.9	:	0.8	2.9	:	1.6	:	0.2	0.4
	RATE OF INCREASE OVER 12 MONTHS							(T/T-12)		TAUX DE CROISSANCE SUR 12 MOIS						
84/83 F	7.0	2.9	8.9	12.1	3.3	7.1	7.8	5.1	10.2	6.4	18.8	11.8	30.0	4.6	5.5	2.9
84/83 M	7.0	3.1	8.6	11.9	3.7	7.1	7.5	5.2	:	7.0	16.9	12.0	31.8	4.7	4.7	2.5
84/83 A	6.7	3.0	7.9	11.6	3.6	7.5	7.8	5.2	:	6.6	17.1	11.2	31.3	4.5	4.9	2.4
84/83 M	6.6	2.8	7.8	11.3	3.6	7.2	7.7	5.1	9.7	6.5	16.8	11.3	30.4	4.2	4.8	2.0
84/83 J	6.6	2.8	7.7	11.3	3.5	6.8	6.7	5.1	:	6.9	19.1	11.4	32.1	4.2	4.1	1.9
84/83 J	6.1	2.2	7.5	10.7	2.8	6.3	5.4	4.5	:	6.5	19.2	12.8	32.9	4.1	4.2	2.6
84/83 A	6.0	1.7	7.4	10.7	2.7	5.7	4.9	5.0	8.0	6.5	18.9	12.0	31.2	4.2	3.7	1.9
84/83 S	5.7	1.5	7.1	10.1	2.7	5.3	3.9	4.7	:	6.2	17.8	11.3	27.1	4.2	3.8	2.3
84/83 O	5.8	2.1	7.0	9.5	3.0	5.8	3.6	5.0	:	6.0	18.4	10.5	25.8	4.2	3.4	2.2
84/83 N	5.6	2.1	6.9	9.2	2.9	5.3	3.2	4.9	6.8	5.8	18.3	9.9	24.9	4.0	4.0	2.2
84/83 D	5.5	2.0	6.7	9.4	2.8	5.3	2.3	4.6	:	5.6	18.1	9.0	21.3	4.0	3.8	2.6
85/84 J	5.6	2.1	6.5	9.3	2.4	5.0	:	5.0	:	5.8	19.4	9.5	24.6	3.6	3.7	2.9
85/84 F	5.5	2.3	6.4	9.0	2.3	5.3	:	5.4	6.2	5.3	18.6	9.8	25.9	3.5	3.7	1.4
85/84 M	5.9	2.5	6.4	9.3	2.4	5.7	:	6.0	:	5.7	18.3	:	23.2	:	3.7	1.6

VERBRAUCHERPREISE
GESAMTINDEX

CONSUMER PRICES
GENERAL INDEX

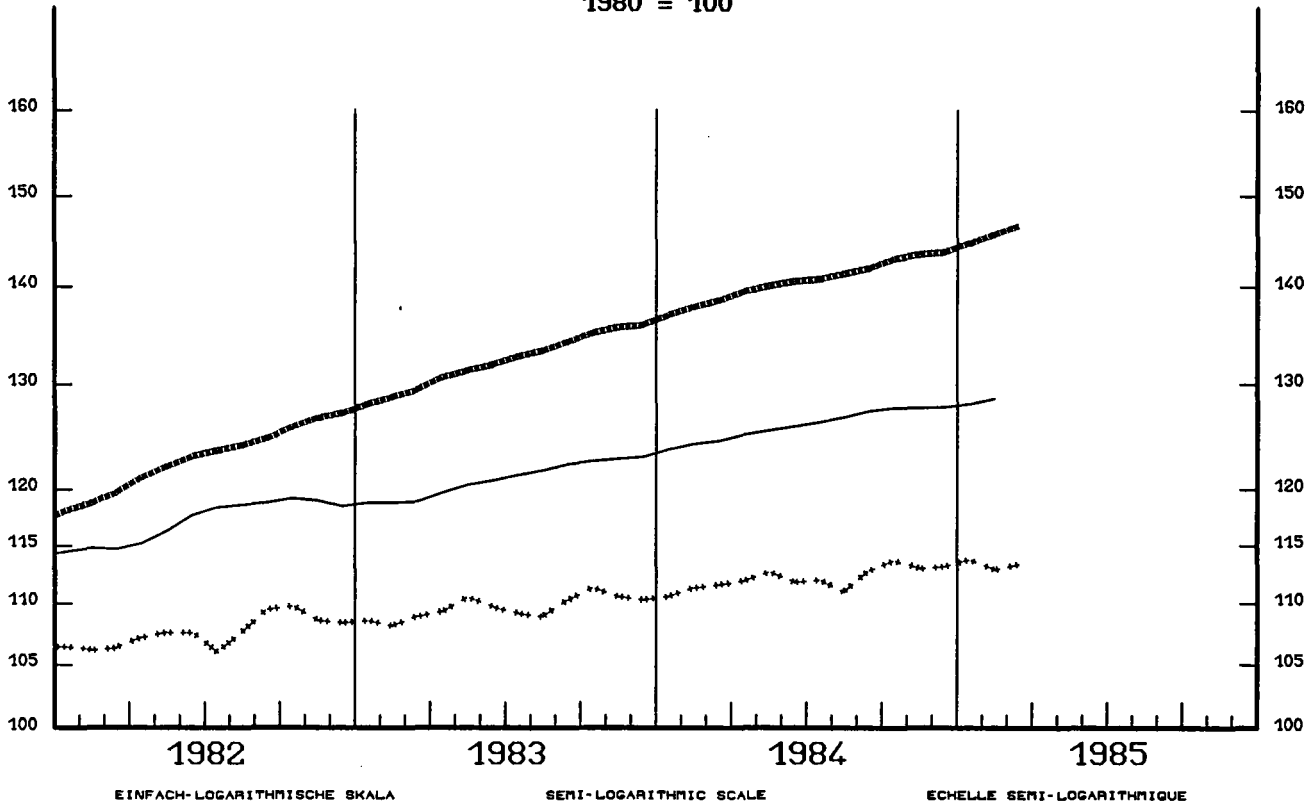
PRIX A LA CONSOMMATION
INDICE GENERAL

— USA

—••••• EUR 10

••••• JAPAN

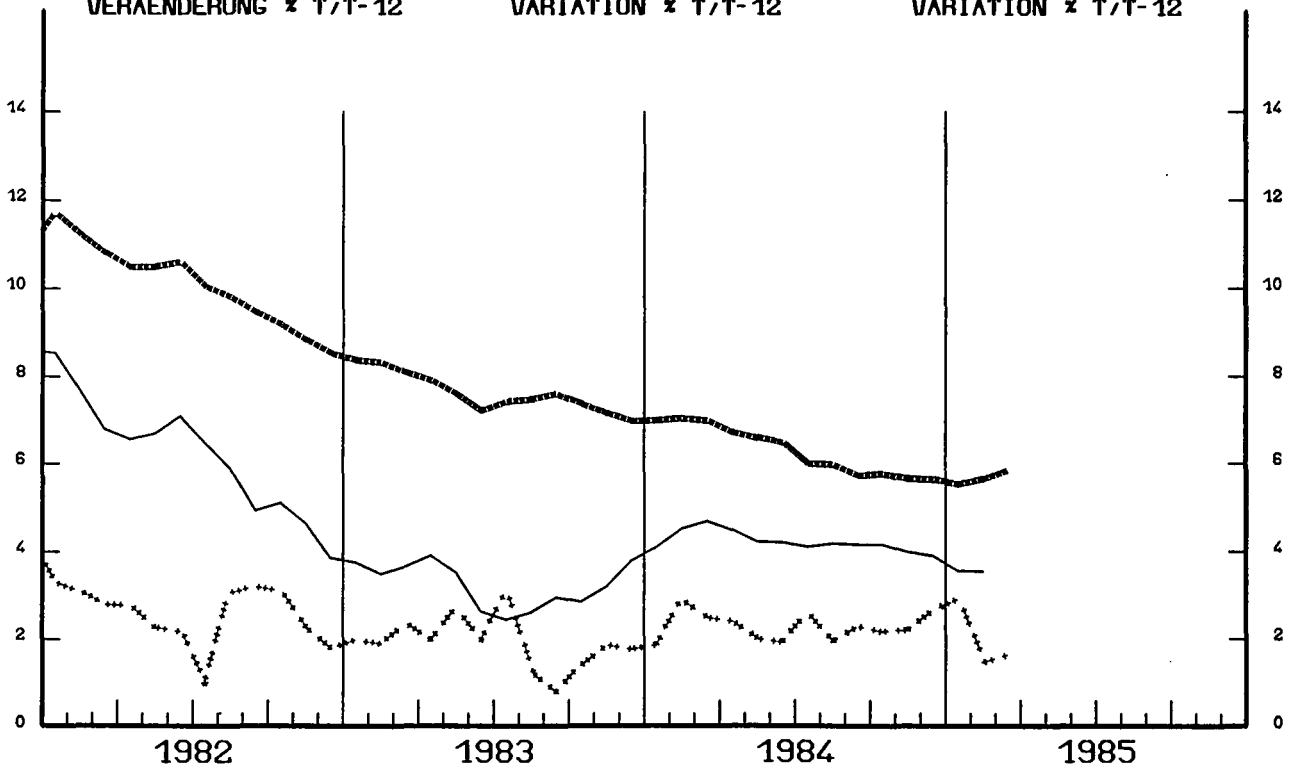
1980 = 100



VERÄNDERUNG x T/T-12

VARIATION x T/T-12

VARIATION x T/T-12



CONSUMER PRICES

PRIX A LA CONSOMMATION

C

GENERAL INDEX

INDICE GENERAL

	SWITZERLAND SUISSE SCHWEIZ	AUSTRIA AUTRICHE OESTERREICH	NORWAY NORVEGE NORGE	SWEDEN SUEDE SVERIGE
	PRICE INDICES		1980 = 100	INDICES DE PRIX
1981 O	106.5	106.8	113.6	112.1
1982 O	112.5	112.6	126.5	121.7
1983 O	115.8	116.3	137.2	132.5
1984 O	119.2	122.9	145.7	143.2
1984 F	118.1	121.8	142.6	138.9
1984 M	118.9	122.2	144.2	140.9
1984 A	119.1	122.2	144.8	141.8
1984 M	118.8	121.9	145.0	142.8
1984 J	119.2	123.0	145.7	142.4
1984 J	119.0	122.7	146.3	142.8
1984 A	119.4	123.9	146.2	143.9
1984 S	119.3	123.7	147.3	144.8
1984 O	120.1	123.9	148.0	145.5
1984 N	120.7	124.2	148.2	146.4
1984 D	120.6	124.3	148.9	148.8
1985 J	121.8	125.3	150.0	149.6
1985 F	122.8	126.0	150.5	151.0
1985 M	123.5	126.6	152.2	152.1
	RATE OF INCREASE OVER ONE MONTH		(T/T-1)	TAUX DE CROISSANCE SUR UN MOIS
84J/83D	0.4	2.5	0.9	1.4
84 F/J	0.4	0.5	0.5	-0.4
84 M/F	0.6	0.3	1.1	1.4
84 A/M	0.2	0.0	0.4	0.6
84 M/A	-0.2	-0.3	0.1	0.7
84 J/M	0.3	0.9	0.5	-0.3
84 J/J	-0.2	-0.2	0.4	0.3
84 A/J	0.4	0.9	-0.1	0.8
84 S/A	-0.1	-0.2	0.8	0.6
84 O/S	0.6	0.2	0.4	0.5
84 N/S	0.5	0.3	0.2	0.6
84 D/N	-0.1	0.1	0.4	1.6
85J/84D	1.0	0.8	0.7	0.5
85 F/J	0.8	0.5	0.3	0.9
85 M/F	0.5	0.5	1.1	0.7
	RATE OF INCREASE OVER 12 MONTHS		(T/T-12)	TAUX DE CROISSANCE SUR 12 MOIS
84/83 J	2.6	5.6	6.4	8.2
84/83 F	2.9	5.7	6.5	7.8
84/83 M	3.4	5.8	6.6	9.0
84/83 A	3.2	5.9	6.6	8.8
84/83 M	2.9	5.9	6.6	9.0
84/83 J	2.8	6.3	6.4	8.0
84/83 J	2.8	5.6	6.1	7.4
84/83 A	2.9	6.0	6.2	7.8
84/83 S	2.7	5.6	6.1	7.7
84/83 O	3.1	5.2	6.1	7.3
84/83 N	3.0	5.3	6.0	7.3
84/83 D	2.9	5.0	5.9	8.2
85/84 J	3.5	3.4	5.7	7.3
85/84 F	4.0	3.4	5.5	8.7
85/84 M	3.9	3.6	5.5	7.9