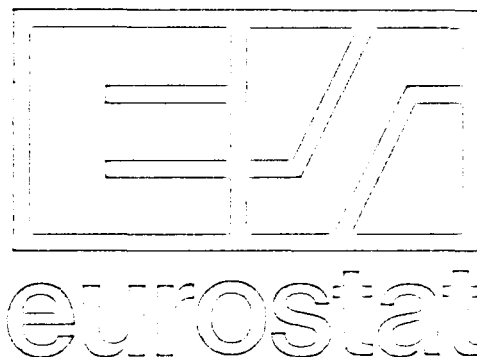


CONSUMER PRICE INDEX



RAPID INFORMATION

THE CONSUMER PRICE INDEX IN APRIL 1985

The CPI for the Community as a whole rose by 0.9 % between March and April 1985.

This rise was marked in the first place by a sharp price increase in the UK (2.1 %), due to rises in mortgage rates and housing costs, as well as increases in duties on petrol, alcohol and tobacco announced in the Budget.

Significant increases were also recorded in Greece (1.6 %), Italy (0.9 %), Luxemburg (0.9 %) and France (0.7 %) whereas moderate increases were reported from Belgium, the Netherlands and Denmark (all 0.4 %) and the F.R. Germany (0.2 %).

The inflation rate over-the-year as measured by comparing the index level for April 1985 to that of April 1984 advanced to 6.1 %.

The corresponding rates for the individual countries vary considerably from country to country:

<u>Less than 4 %</u>		<u>from 4 to 6 %</u>		<u>from 6 to 8 %</u>		<u>over 8 %</u>	
Germany (FR)	2.5 %	Luxemburg	4.4 %	Ireland	6.2 %	Italy	9.3 %
Netherlands	2.5 %	Belgium	5.5 %	France	6.5 %	Greece	17.7 %
		Denmark	5.9 %	United Kingdom	6.9 %	Spain	9.6 %
						Portugal	22.2 %

For the other countries for which EUROSTAT regularly publishes the CPI, the rates are as follows:

Switzerland	3.6 %	USA	3.7 %
Austria	3.8 %	Canada	3.9 %
Norway	5.5 %	Japan	1.8 %
Sweden	7.7 %		

CONSUMER PRICES

A

PRIX A LA CONSOMMATION

GENERAL INDEX

INDICE GENERAL

	EUR 10	BR DEUTSCH LAND	FRANCE	ITALIA	NEDER= LAND	BELGIQUE BELGIE	LUXEM= BOURG*	UNITED KINGDOM	IRELAND	DANMARK	ELLAS*	ESPANA	PORTUGAL	USA	CANADA	JAPAN
	PRICE INDICES							1980 = 100		INDICES DE PRIX						
1981 O	111.7	106.3	113.4	117.8	106.7	107.6	108.1	111.9	120.4	111.7	124.5	114.6	120.0	110.3	112.5	104.9
1982 O	123.0	111.9	126.8	137.2	112.8	117.0	118.2	121.5	141.1	123.0	150.6	131.0	146.9	117.1	124.6	107.7
1983 O	132.4	115.6	139.0	157.3	115.9	126.0	128.4	127.1	155.8	131.5	181.1	147.0	184.3	120.9	131.8	109.7
1984 O	140.7	118.4	149.3	174.3	119.6	134.0	136.7	133.4	169.2	139.8	214.5	163.5	238.4	126.1	137.6	112.1
1984 M	138.6	117.9	146.4	170.6	118.9	132.2	135.5	130.9	:	137.6	205.5	159.6	226.3	124.5	136.3	111.6
1984 A	139.5	118.1	147.3	171.9	119.4	133.1	136.0	132.6	:	138.0	209.5	160.5	230.7	125.1	136.7	111.9
1984 M	140.1	118.2	148.1	173.0	119.4	133.4	136.4	133.1	168.8	139.4	212.2	161.3	228.6	125.5	136.9	112.7
1984 J	140.6	118.6	148.8	174.0	119.4	133.7	136.5	133.4	:	140.2	215.6	162.5	235.8	125.9	137.5	111.8
1984 J	140.8	118.4	149.8	174.4	119.3	134.5	136.8	133.3	:	139.9	214.9	165.0	242.3	126.3	138.2	112.0
1984 A	141.3	118.2	150.6	175.3	119.4	135.0	137.1	134.5	170.9	140.5	213.7	166.1	246.9	126.8	138.2	111.0
1984 S	142.0	118.3	151.3	176.7	119.9	135.4	137.3	134.8	:	141.5	219.9	166.4	247.5	127.4	138.4	112.8
1984 O	143.0	119.0	152.3	178.4	120.9	136.0	138.3	135.6	:	142.1	225.3	167.4	249.7	127.7	138.6	113.7
1984 N	143.5	119.2	152.8	179.8	121.0	136.1	138.7	136.1	172.1	143.1	227.8	168.2	253.8	127.7	139.5	113.0
1984 D	143.8	119.3	153.1	180.9	120.9	136.4	138.7	135.9	:	142.8	231.1	169.5	256.2	127.8	139.6	113.2
1985 J	144.7	120.0	153.9	182.9	120.6	137.2	139.1	136.4	:	143.5	236.4	172.6	267.2	128.1	140.2	113.8
1985 F	145.7	120.5	154.7	185.1	121.0	138.7	140.0	137.5	175.3	144.4	236.0	173.8	274.5	128.6	141.0	112.9
1985 M	146.7	120.9	155.8	186.6	121.9	139.8	140.7	138.8	:	145.5	242.7	174.9	278.7	129.2	141.4	113.4
1985 A	148.0	121.1	156.9P	188.3E	122.4E	140.3	142.0	141.8	:	146.1E	246.5	:	282.1	129.8	142.0	113.9
	RATE OF INCREASE OVER ONE MONTH (IRELAND 3 MONTHS)							(T/T-1)		TAUX DE CROISSANCE SUR UN MOIS (IRLANDE 3 MOIS)						
84 M/F	0.5	0.1	0.7	0.7	0.5	0.4	0.4	0.3	:	0.4	3.0	0.9	3.8	0.2	0.2	0.3
84 A/M	0.7	0.2	0.6	0.8	0.4	0.7	0.4	1.3	:	0.3	1.9	0.6	1.9	0.5	0.2	0.3
84 M/A	0.4	0.1	0.5	0.6	0.0	0.2	0.4	0.4	2.3	1.0	1.3	0.5	-0.9	0.3	0.2	0.7
84 J/M	0.4	0.3	0.5	0.6	0.0	0.3	0.0	0.3	:	0.6	1.6	0.7	3.2	0.3	0.4	-0.8
84 J/J	0.1	-0.2	0.7	0.2	-0.1	0.5	0.2	-0.1	:	-0.2	-0.3	1.5	2.7	0.3	0.6	0.2
84 A/J	0.4	-0.2	0.5	0.5	0.1	0.4	0.2	0.9	1.2	0.4	-0.6	0.7	1.9	0.4	0.0	-0.9
84 S/A	0.4	0.1	0.5	0.8	0.4	0.3	0.1	0.2	:	0.7	2.9	0.2	0.3	0.5	0.1	1.6
84 O/S	0.7	0.6	0.7	1.0	0.8	0.5	0.8	0.6	:	0.4	2.5	0.6	0.9	0.3	0.2	0.8
84 M/S	0.4	0.2	0.3	0.8	0.1	0.0	0.3	0.3	0.7	0.7	1.1	0.4	1.6	0.0	0.6	-0.6
84 D/N	0.2	0.1	0.2	0.6	-0.1	0.2	0.0	-0.1	:	-0.2	1.5	0.7	1.0	0.1	0.1	0.2
85J/84D	0.6	0.6	0.5	1.1	-0.2	0.6	0.3	0.4	:	0.5	2.3	1.8	4.3	0.2	0.4	0.5
85 F/J	0.7	0.4	0.5	1.2	0.3	1.0	0.6	0.8	1.9	0.7	-0.2	0.7	2.7	0.4	0.6	-0.8
85 M/F	0.7	0.3	0.7	0.8	0.7	0.8	0.5	0.9	:	0.8	2.9	0.7	1.5	0.5	0.2	0.4
85 A/M	0.9	0.2	0.7P	0.9E	0.4E	0.4	0.9	2.1	:	0.4E	1.6	:	1.2	0.4	0.4	0.4
	RATE OF INCREASE OVER 12 MONTHS							(T/T-12)		TAUX DE CROISSANCE SUR 12 MOIS						
84/83 M	7.0	3.1	8.6	11.9	3.7	7.1	8.1	5.2	:	7.0	17.6	12.0	31.8	4.7	4.7	2.5
84/83 A	6.7	3.0	7.9	11.6	3.6	7.5	8.1	5.2	:	6.6	18.0	11.2	31.3	4.5	4.9	2.4
84/83 M	6.6	2.8	7.8	11.3	3.6	7.2	8.0	5.1	9.7	6.5	17.6	11.3	30.4	4.2	4.8	2.0
84/83 J	6.6	2.8	7.7	11.3	3.5	6.8	7.7	5.1	:	6.9	19.2	11.4	32.1	4.2	4.1	1.9
84/83 J	6.1	2.2	7.5	10.7	2.8	6.3	6.3	4.5	:	6.5	19.2	12.8	32.9	4.1	4.2	2.6
84/83 A	6.0	1.7	7.4	10.7	2.7	5.7	5.8	5.0	8.0	6.5	18.7	12.0	31.2	4.2	3.7	1.9
84/83 S	5.7	1.5	7.1	10.1	2.7	5.3	4.9	4.7	:	6.2	18.0	11.3	27.1	4.2	3.8	2.3
84/83 O	5.8	2.1	7.0	9.5	3.0	5.8	4.8	5.0	:	6.0	18.0	10.5	25.8	4.2	3.4	2.2
84/83 M	5.6	2.1	6.9	9.2	2.9	5.3	4.6	4.9	6.8	5.8	18.0	9.9	24.9	4.0	4.0	2.2
84/83 D	5.5	2.0	6.7	9.4	2.8	5.3	4.1	4.6	:	5.6	18.1	9.0	21.3	4.0	3.8	2.6
85/84 J	5.6	2.1	6.5	9.3	2.4	5.0	3.8	5.0	:	5.8	19.0	9.5	24.6	3.6	3.7	2.9
85/84 F	5.6	2.3	6.4	9.3	2.3	5.3	3.7	5.4	6.2	5.3	18.3	9.8	25.9	3.5	3.7	1.4
85/84 M	5.9	2.5	6.4	9.4	2.5	5.7	3.9	6.1	:	5.7	18.1	9.6	23.1	3.8	3.7	1.6
85/84 A	6.1	2.5	6.5P	9.5E	2.5E	5.5	4.4	6.9	:	5.9E	17.7	:	22.2	3.7	3.9	1.8

* Revised series for Luxembourg and Greece

* Séries révisées pour Luxembourg et Grèce

VERBRAUCHERPREISE
GESAMTINDEX

CONSUMER PRICES
GENERAL INDEX

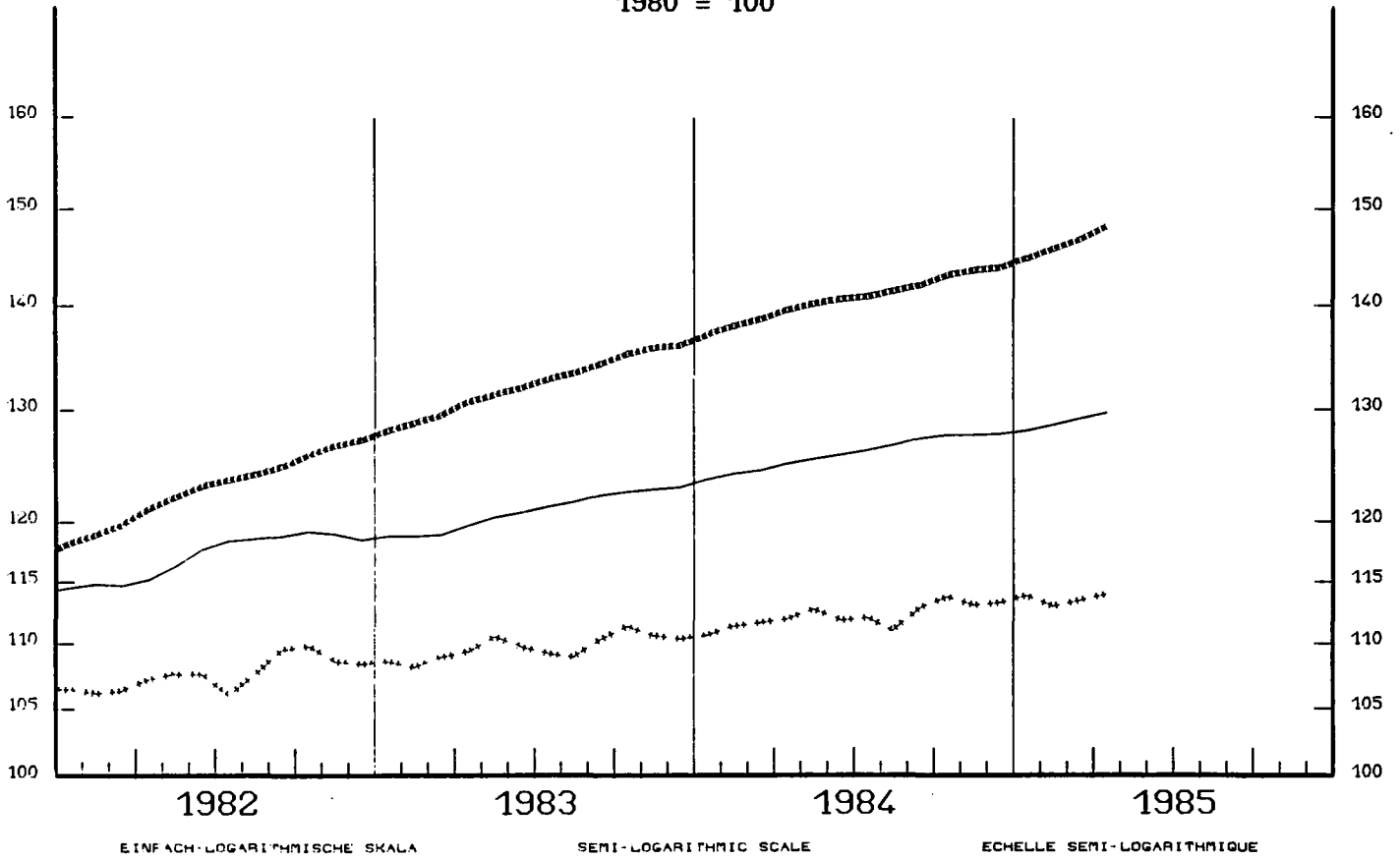
PRIX A LA CONSOMMATION
INDICE GENERAL

— USA

----- EUR 10

*** JAPAN

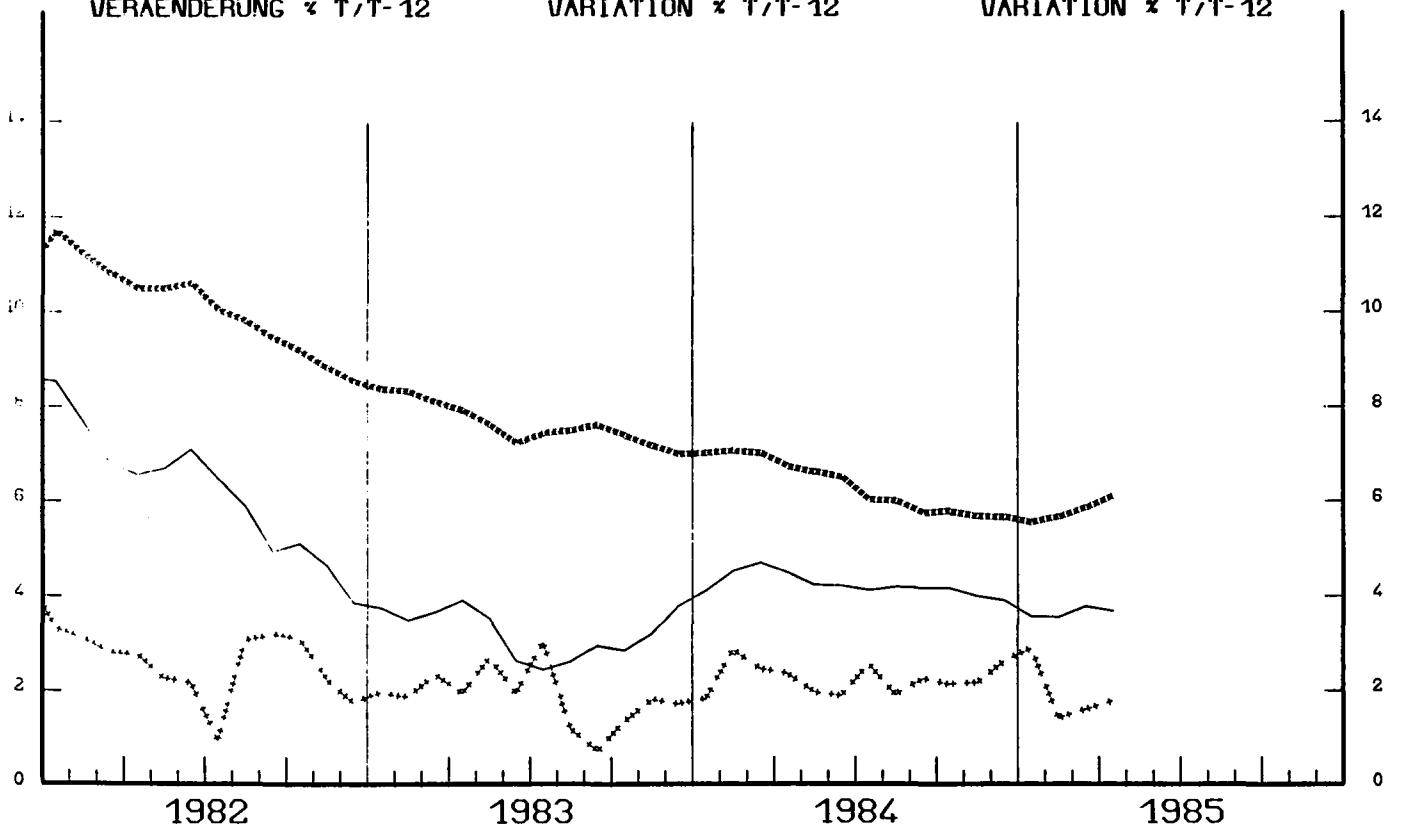
1980 = 100



VERÄNDERUNG % T/T-12

VARIATION % T/T-12

VARIATION % T/T-12



CONSUMER PRICES

GENERAL INDEX

C

PRIX A LA CONSOMMATION

INDICE GENERAL

	SWITZERLAND SUISSE SCWEIZ	AUSTRIA AUTRICHE OESTERREICH	NORWAY NORVEGE NORGE	SWEDEN SUEDE SVERIGE
	PRICE INDICES		1980 = 100	INDICES DE PRIX
1981 O	106.5	106.8	113.6	112.1
1982 O	112.5	112.6	126.5	121.7
1983 O	115.8	116.3	137.2	132.5
1984 O	119.2	122.9	145.7	143.2
1984 M	118.9	122.2	144.2	140.9
1984 A	119.1	122.2	144.8	141.8
1984 M	118.8	121.9	145.0	142.8
1984 J	119.2	123.0	145.7	142.4
1984 J	119.0	122.7	146.3	142.8
1984 A	119.4	123.9	146.2	143.9
1984 S	119.3	123.7	147.3	144.8
1984 O	120.1	123.9	148.0	145.5
1984 M	120.7	124.2	148.2	146.4
1984 D	120.6	124.3	148.9	148.8
1985 J	121.8	125.3	150.0	149.6
1985 F	122.8	126.0	150.4	151.0
1985 M	123.5	126.6	152.1	152.1
1985 A	123.4	126.9	152.8	152.7
	RATE OF INCREASE OVER ONE MONTH	(T/T-1)		TAUX DE CROISSANCE SUR UN MOIS
84 F/J	0.4	0.5	0.5	-0.4
84 M/F	0.6	0.3	1.1	1.4
84 A/M	0.2	0.0	0.4	0.6
84 M/A	-0.2	-0.3	0.1	0.7
84 J/M	0.3	0.9	0.5	-0.3
84 J/J	-0.2	-0.2	0.4	0.3
84 A/J	0.4	0.9	-0.1	0.8
84 S/A	-0.1	-0.2	0.8	0.6
84 O/S	0.6	0.2	0.4	0.5
84 M/S	0.5	0.3	0.2	0.6
84 D/M	-0.1	0.1	0.4	1.6
85J/84D	1.0	0.8	0.7	0.5
85 F/J	0.8	0.5	0.3	0.9
85 M/F	0.5	0.5	1.1	0.7
85 M/F	-0.1	0.2	0.4	0.4
	RATE OF INCREASE OVER 12 MONTHS	(T/T-12)		TAUX DE CROISSANCE SUR 12 MOIS
84/83 F	2.9	5.7	6.5	7.8
84/83 M	3.4	5.8	6.6	9.0
84/83 A	3.2	5.9	6.6	8.8
84/83 M	2.9	5.9	6.6	9.0
84/83 J	2.8	6.3	6.4	8.0
84/83 J	2.8	5.6	6.1	7.4
84/83 A	2.9	6.0	6.2	7.8
84/83 S	2.7	5.6	6.1	7.7
84/83 O	3.1	5.2	6.1	7.3
84/83 M	3.0	5.3	6.0	7.3
84/83 D	2.9	5.0	5.9	8.2
85/84 J	3.5	3.4	5.7	7.3
85/84 F	4.0	3.4	5.5	8.7
85/84 M	3.9	3.6	5.5	7.9