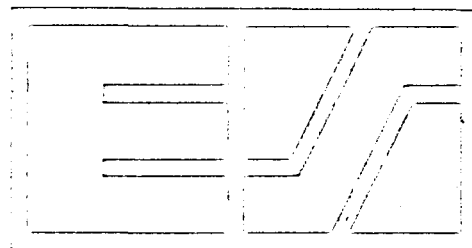


# CONSUMER PRICE INDEX



## LIBRARY

## eurostat

### RAPID INFORMATION

**PRICES:** In September, the inflation rate for the Community was the lowest for 15 years (5.3%)

According to the calculations of Eurostat in Luxembourg, slowing down of the inflation rate for the Community as a whole continued, to reach a rate of 5.3% over the year (September 1985 compared to September 1984). This is the lowest increase since 1970, i.e. before the first extension of the E.C.

Nearly all Member countries contributed to the favourable EC index for September (+ 0.3%), with rates of increase between -0.1% and + 0.5%.

The only exception was Greece where prices went up by 5.0% between August and September 1985.

This significant increase -partly due to seasonal effects- was mainly caused by big increases for clothing (+ 9%), households goods (+ 7.6%), other goods and services (+ 9.5%), and particularly for fruit (+ 17.9%) and vegetables (+37,7%).

Since the beginning of this year (from December 1984 to September 1985) prices in the E.C. rose by 4.0% on average compared with 4.2% for the same period of 1984.

The corresponding figures for the individual countries are as follows:

	<u>First 9 months</u>			<u>First 9 months</u>	
	1985	1984		1985	1984
Germany (FR)	1.3	1.1	France	4.0	5.4
Netherlands	1.6	2.1	Ireland (1)	4.7	6.0
Luxemburg	2.9	3.0	United Kingdom	5.1	3.7
Denmark	2.9	4.7	Italy	6.1	6.8
Belgium	3.7	4.6	Greece	14.3	12.3

In Spain prices rose by 5.6% during this period (1984: 7.0), whereas for Portugal it was 11.9% (1984: 17.1).

In the United States prices rose by 2.6% (1984: 3.1), in Canada by 3.0% (1984: 2.8%) and in Japan by 1.3% (1984: 2.3).

(1) August 1985-November 1984  
Also available in FR

9 □ 1985

## CONSUMER PRICES

A

## PRIX A LA CONSOMMATION

## GENERAL INDEX

## INDICE GENERAL

	EUR 10	BR DEUTSCH LAND	FRANCE	ITALIA	NEDER= LAND	BELGIQUE BELGIE	LUXEM= BOURG	UNITED KINGDOM	IRELAND	DANMARK	ELLAS	ESPANA	PORTUGAL	USA	CANADA	JAPAN
	PRICE INDICES								INDICES DE PRIX							
	1980 = 100															
1981 O	111.7	106.3	113.4	117.8	106.7	107.6	108.1	111.9	120.4	111.7	124.5	114.6	120.0	110.3	112.5	104.9
1982 O	123.0	111.9	126.8	137.2	112.8	117.0	118.2	121.5	141.1	123.0	150.6	131.0	146.9	117.1	124.6	107.7
1983 O	132.4	115.6	139.0	157.3	115.9	126.0	128.4	127.1	155.8	131.5	181.1	147.0	184.3	120.9	131.8	109.7
1984 O	140.7	118.4	149.3	174.3	119.6	134.0	136.7	133.4	169.2	139.8	214.5	163.5	238.4	126.1	137.6	112.1
1984 A	141.3	118.2	150.6	175.3	119.4	135.0	137.1	134.5	170.9	140.5	213.7	166.1	246.9	126.8	138.2	111.0
1984 S	142.0	118.3	151.3	176.7	120.0	135.4	137.3	134.8	:	141.5	219.9	166.4	247.5	127.4	138.4	112.8
1984 O	143.0	119.0	152.3	178.4	120.9	136.0	138.3	135.6	:	142.1	225.3	167.4	249.7	127.7	138.6	113.7
1984 N	143.5	119.2	152.8	179.8	121.0	136.1	138.7	136.1	172.1	143.1	227.8	168.2	253.8	127.7	139.5	113.0
1984 D	143.8	119.3	153.1	180.9	120.9	136.4	138.7	135.9	:	142.8	231.1	169.5	256.2	127.8	139.6	113.2
1985 J	144.7	120.0	153.9	182.9	120.6	137.2	139.1	136.4	:	143.5	236.4	172.6	267.2	128.1	140.2	113.8
1985 F	145.7	120.5	154.7	185.1	121.0	138.7	140.0	137.5	175.3	144.4	236.0	173.8	274.5	128.6	141.1	112.9
1985 M	146.7	120.9	155.8	186.6	121.9	139.8	140.7	138.8	:	145.5	242.7	174.9	278.6	129.2	141.4	113.4
1985 A	148.0	121.1	156.9	188.0	122.4	140.3	142.0	141.8	:	146.0	246.5	176.8	282.0	129.7	142.0	114.0
1985 M	148.5	121.2	157.7	189.4	122.5	140.5	142.1	142.4	177.6	147.0	248.2	177.3	282.9	130.2	142.3	114.5
1985 J	149.0	121.3	158.3	190.4	122.4	140.5	142.4	142.7	:	147.0	252.7	177.0	283.2	130.6	143.1	114.6
1985 J	149.1	121.1	158.9	190.8	122.2	141.3	143.2	142.5	:	146.4	250.9	178.0	284.2	130.8	143.5	114.7
1985 A	149.1	120.7	159.1	191.2	122.2	141.3	142.7	142.9	180.3	146.2	251.6	178.4	286.5	131.1	143.8	113.6
1985 S	149.5	120.9	159.3P	192.0E	122.8P	141.5	142.7	142.8	:	146.9E	264.1	:	286.8	:	:	114.7E
	RATE OF INCREASE OVER ONE MONTH (IRELAND 3 MONTHS)								(T/T-1) TAUX DE CROISSANCE SUR UN MOIS (IRLANDE 3 MOIS)							
84 A/J	0.4	-0.2	0.5	0.5	0.1	0.4	0.2	0.9	1.2	0.4	-0.6	0.7	1.9	0.4	0.0	-0.9
84 S/A	0.4	0.1	0.5	0.8	0.5	0.3	0.1	0.2	:	0.7	2.9	0.2	0.3	0.5	0.1	1.6
84 O/S	0.7	0.6	0.7	1.0	0.7	0.5	0.8	0.6	:	0.4	2.5	0.6	0.9	0.3	0.2	0.8
84 N/S	0.4	0.2	0.3	0.8	0.1	0.0	0.3	0.3	0.7	0.7	1.1	0.4	1.6	0.0	0.6	-0.6
84 D/N	0.2	0.1	0.2	0.6	-0.1	0.2	0.0	-0.1	:	-0.2	1.5	0.7	1.0	0.1	0.1	0.2
85J/84D	0.6	0.6	0.5	1.1	-0.2	0.6	0.3	0.4	:	0.5	2.3	1.8	4.3	0.2	0.4	0.5
85 F/J	0.7	0.4	0.5	1.2	0.3	1.0	0.6	0.8	1.9	0.6	-0.2	0.7	2.7	0.4	0.6	-0.8
85 M/F	0.7	0.3	0.7	0.8	0.7	0.8	0.5	0.9	:	0.8	2.9	0.7	1.5	0.4	0.2	0.4
85 A/M	0.8	0.2	0.7	0.8	0.4	0.4	0.9	2.1	:	0.3	1.6	1.1	1.2	0.4	0.4	0.5
85 M/A	0.4	0.1	0.5	0.7	0.1	0.1	0.1	0.5	1.3	0.7	0.7	0.3	0.3	0.4	0.2	0.4
85 J/M	0.3	0.1	0.4	0.5	-0.1	0.0	0.2	0.2	:	0.0	1.8	-0.2	0.1	0.3	0.6	0.1
85 J/J	0.1	-0.2	0.4	0.2	-0.2	0.5	0.5	-0.2	:	-0.4	-0.7	0.6	0.3	0.2	0.3	0.1
85 A/J	0.0	-0.3	0.1	0.2	0.0	0.0	-0.4	0.3	1.5	-0.1	0.3	0.2	0.8	0.2	0.2	-1.0
85 S/A	0.3	0.2	0.1P	0.4E	0.5P	0.2	0.0	-0.1	:	0.5E	5.0	:	0.1	:	:	1.0E
	RATE OF INCREASE OVER 12 MONTHS								(T/T-12) TAUX DE CROISSANCE SUR 12 MOIS							
84/83 A	6.0	1.7	7.4	10.7	2.7	5.7	5.8	5.0	8.0	6.5	18.7	12.0	31.2	4.2	3.7	1.9
84/83 S	5.7	1.5	7.1	10.1	2.7	5.3	4.9	4.7	:	6.2	18.0	11.3	27.1	4.2	3.8	2.3
84/83 O	5.8	2.1	7.0	9.5	3.0	5.8	4.8	5.0	:	6.0	18.0	10.5	25.8	4.2	3.4	2.2
84/83 N	5.6	2.1	6.9	9.2	2.9	5.3	4.6	4.9	6.8	5.8	18.0	9.9	24.9	4.0	4.0	2.2
84/83 D	5.5	2.0	6.7	9.4	2.8	5.3	4.1	4.6	:	5.6	18.1	9.0	21.3	4.0	3.8	2.6
85/84 J	5.6	2.1	6.5	9.3	2.4	5.0	3.8	5.0	:	5.8	19.0	9.5	24.6	3.6	3.7	2.9
85/84 F	5.6	2.3	6.4	9.3	2.3	5.3	3.7	5.4	6.2	5.3	18.3	9.8	25.9	3.5	3.7	1.4
85/84 M	5.9	2.5	6.4	9.4	2.5	5.7	3.9	6.1	:	5.7	18.1	9.6	23.1	3.7	3.7	1.6
85/84 A	6.1	2.5	6.5	9.4	2.5	5.5	4.4	6.9	:	5.8	17.7	10.2	22.2	3.7	3.9	1.9
85/84 M	6.0	2.5	6.5	9.5	2.6	5.3	4.2	7.0	5.2	5.5	17.0	9.9	23.8	3.7	3.9	1.6
85/84 J	6.0	2.3	6.4	9.4	2.5	5.1	4.4	7.0	:	4.9	17.2	9.0	20.1	3.7	4.1	2.5
85/84 J	5.8	2.3	6.1	9.4	2.4	5.1	4.7	6.9	:	4.6	16.7	7.9	17.3	3.6	3.8	2.4
85/84 A	5.5	2.1	5.6	9.1	2.3	4.7	4.0	6.2	5.5	4.1	17.8	7.4	16.0	3.4	4.0	2.3
85/84 S	5.3	2.2	5.3P	8.7E	2.3P	4.6	3.9	5.9	:	3.8E	20.1	:	15.9	:	:	1.7E

VERBRAUCHERPREISE  
GESAMTINDEX

CONSUMER PRICES  
GENERAL INDEX

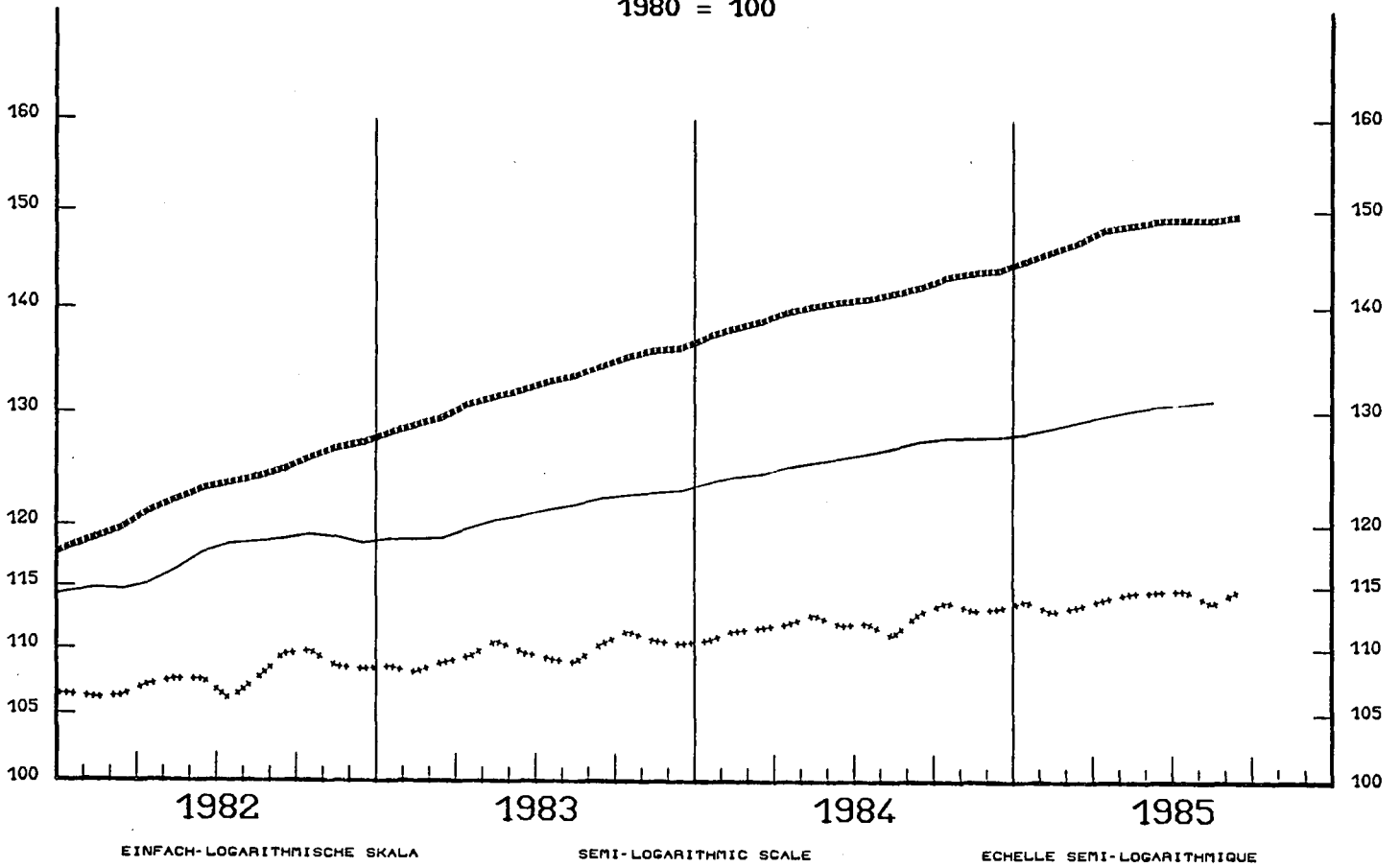
PRIX A LA CONSOMMATION  
INDICE GENERAL

— USA

----- EUR 10

\*\*\* JAPAN

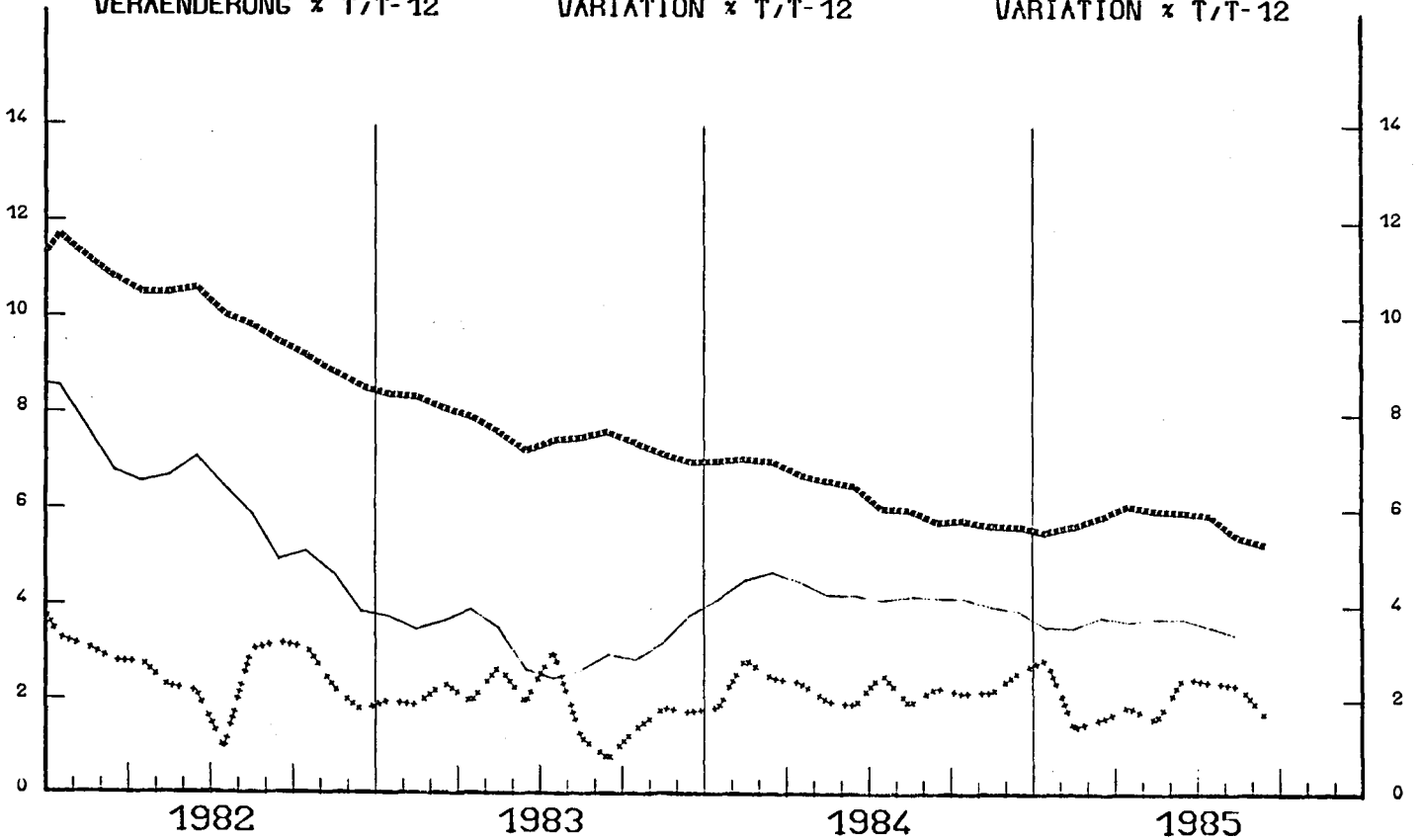
1980 = 100



VERÄNDERUNG x T/T-12

VARIATION x T/T-12

VARIATION x T/T-12



## CONSUMER PRICES

## PRIX A LA CONSOMMATION

C

## GENERAL INDEX

## INDICE GENERAL

	SWITZERLAND SUISSE SCHWEIZ	AUSTRIA AUTRICHE OESTERREICH	NORWAY NORVEGE NORGE	SWEDEN SUEDE SVERIGE	FINLAND FINLANDE SUOMI
	PRICE INDICES		1980 = 100		INDICES DE PRIX
1981 O	106.5	106.8	113.6	112.1	111.9
1982 O	112.5	112.6	126.5	121.7	122.6
1983 O	115.8	116.3	137.2	132.5	132.8
1984 O	119.2	122.9	145.7	143.2	142.2
1984 A	119.4	123.9	146.2	143.9	143.4
1984 S	119.3	123.7	147.3	144.8	144.2
1984 O	120.1	123.9	148.0	145.5	145.0
1984 N	120.7	124.2	148.2	146.4	145.1
1984 D	120.6	124.3	148.9	148.8	145.2
1985 J	121.8	125.3	150.0	149.6	146.8
1985 F	122.8	126.0	150.4	151.0	147.4
1985 M	123.5	126.6	152.1	152.1	148.8
1985 A	123.4	126.9	152.8	152.7	149.6
1985 M	123.3	126.6	153.2	154.5	151.0
1985 J	123.2	127.0	154.3	153.9	151.4
1985 J	122.9	127.1	154.8	153.8	151.4
1985 A	122.9	127.2	154.4	153.8	151.7
1985 S	123.3	:	:	154.5	:
	RATE OF INCREASE OVER ONE MONTH		(T/T-1)		TAUX DE CROISSANCE SUR UN MOIS
84 A/J	0.4	0.9	-0.1	0.8	0.4
84 S/A	-0.1	-0.2	0.8	0.6	0.6
84 O/S	0.6	0.2	0.4	0.5	0.6
84 N/S	0.5	0.3	0.2	0.6	0.1
84 D/N	-0.1	0.1	0.4	1.6	0.1
85 J/84 D	1.0	0.8	0.7	0.5	1.1
85 F/J	0.8	0.5	0.3	0.9	0.4
85 M/F	0.5	0.5	1.1	0.7	0.9
85 A/M	-0.1	0.2	0.4	0.4	0.5
85 M/A	-0.1	-0.3	0.3	1.2	1.0
85 J/M	-0.1	0.3	0.7	-0.4	0.3
85 J/J	-0.2	0.1	0.4	-0.1	0.0
85 A/J	0.0	0.1	-0.3	0.0	0.2
85 S/A	0.3	:	:	0.5	:
	RATE OF INCREASE OVER 12 MONTHS		(T/T-12)		TAUX DE CROISSANCE SUR 12 MOIS
84/83 A	2.9	6.0	6.2	7.8	6.7
84/83 S	2.7	5.6	6.1	7.7	6.6
84/83 O	3.1	5.2	6.1	7.3	6.9
84/83 N	3.0	5.3	6.0	7.3	6.0
84/83 D	2.9	5.0	5.9	8.2	6.1
85/84 J	3.5	3.4	5.7	7.3	6.4
85/84 F	4.0	3.4	5.5	8.7	6.4
85/84 M	3.9	3.6	5.5	7.9	6.7
85/84 A	3.6	3.8	5.5	7.7	6.6
85/84 M	3.8	3.8	5.7	8.2	6.4
85/84 J	3.4	3.2	5.9	8.1	6.4
85/84 J	3.3	3.5	5.8	7.7	6.0
85/84 A	2.9	2.6	5.6	6.9	5.8
85/84 S	3.3	:	:	6.7	: