

# CONSUMER PRICE INDEX

## LIBRARY



eurostat

### RAPID INFORMATION

PRICES : In August 1985, for the first time, prices in the Community did not increase (+ 0.0 %)

The consumer price index for the whole of the Community remained unchanged from July to August 1985.

All Member States showed favourable trends. Three reported decreases (Luxembourg : - 0.4 %, Germany : - 0.3 % and Denmark :-0.1 %), in two others the index remained unchanged (Belgium and Netherlands), and in the others the increases were very slight (France : + 0.1 %, Italy : +0.2 %, United Kingdom : + 0.3 %, Greece : + 0.3 %).

The index for Ireland rose by 1.5 % between mid-May and mid-August, i.e. an increase of 0.5 % in monthly terms.

Although price increases are usually slight in August, it is the first time ever in the history of the Community that the consumer price index for the whole of the European Community has not risen from a given month to the next.

The 12-monthly rate of inflation (August 1985/August 1984), as measured by the consumer price index, is of the order of 5.5 % for the Community. The rate for the US is 3.5 % and for Japan 2.7 %.

The rates for each of the Member States and for the two countries about to join the Community are as follows :

Federal Republic of Germany	2.1 %	Belgium	4.7 %	Italy	9.1 %
Netherlands	2.3 %	Ireland	5.5 %	Greece	17.8 %
Luxembourg	4.0 %	France	5.6 %	Spain	8.0 %
Denmark	4.1 %	United Kingdom	6.2 %	Portugal	16.0 %

The rates for the non-Community countries for which Eurostat regularly publishes indices are as follows :

Switzerland	2.9 %	Norway	5.6 %	Finland	5.8 %
Austria	2.6 %	Sweden	6.9 %	Canada	4.0 %

N.B. EUROSTAT has just published time series from 1981-1984 on the new base 1980 = 100 containing monthly and yearly data for the general index, the 8 main groups and 19 sub-groups. Those users who wish to get one or more copies of this publication should fill in the attached order form.

Also available in FR

8 □ 1985

## CONSUMER PRICES

A

## PRIX A LA CONSOMMATION

## GENERAL INDEX

## INDICE GENERAL

	EUR 10	BR DEUTSCH LAND	FRANCE	ITALIA	NEDER= LAND	BELGIQUE BELGIE	LUXEM= BOURG	UNITED KINGDOM	IRELAND	DANMARK	ELLAS	ESPAÑA	PORTUGAL	USA	CANADA	JAPAN
	PRICE INDICES							1980 = 100		INDICES DE PRIX						
1981 O	111.7	106.3	113.4	117.8	106.7	107.6	108.1	111.9	120.4	111.7	124.5	114.6	120.0	110.3	112.5	104.9
1982 O	123.0	111.9	126.8	137.2	112.8	117.0	118.2	121.5	141.1	123.0	150.6	131.0	146.9	117.1	124.6	107.7
1983 O	132.4	115.6	139.0	157.3	115.9	126.0	128.4	127.1	155.8	131.5	181.1	147.0	184.3	120.9	131.8	109.7
1984 O	140.7	118.4	149.3	174.3	119.6	134.0	136.7	133.4	169.2	139.8	214.5	163.5	238.4	126.1	137.6	112.1
1984 J	140.8	118.4	149.8	174.4	119.3	134.5	136.8	133.3	:	139.9	214.9	165.0	242.3	126.3	138.2	112.0
1984 A	141.3	118.2	150.6	175.3	119.4	135.0	137.1	134.5	170.9	140.5	213.7	166.1	246.9	126.8	138.2	111.0
1984 S	142.0	118.3	151.3	176.7	120.0	135.4	137.3	134.8	:	141.5	219.9	166.4	247.5	127.4	138.4	112.8
1984 O	143.0	119.0	152.3	178.4	120.9	136.0	138.3	135.6	:	142.1	225.3	167.4	249.7	127.7	138.6	113.7
1984 N	143.5	119.2	152.8	179.8	121.0	136.1	138.7	136.1	172.1	143.1	227.8	168.2	253.8	127.7	139.5	113.0
1984 D	143.8	119.3	153.1	180.9	120.9	136.4	138.7	135.9	:	142.8	231.1	169.5	256.2	127.8	139.6	113.2
1985 J	144.7	120.0	153.9	182.9	120.6	137.2	139.1	136.4	:	143.5	236.4	172.6	267.2	128.1	140.2	113.8
1985 F	145.7	120.5	154.7	185.1	121.0	138.7	140.0	137.5	175.3	144.4	236.0	173.8	274.5	128.6	141.1	112.9
1985 M	146.7	120.9	155.8	186.6	121.9	139.8	140.7	138.8	:	145.5	242.7	174.9	278.6	129.2	141.4	113.4
1985 A	148.0	121.1	156.9	188.0	122.4	140.3	142.0	141.8	:	146.0	246.5	176.8	282.0	129.7	142.0	114.0
1985 M	148.5	121.2	157.7	189.4	122.5	140.5	142.1	142.4	177.6	147.0	248.2	177.3	282.9	130.2	142.3	114.5
1985 J	149.0	121.3	158.3	190.4	122.4	140.5	142.4	142.7	:	147.0	252.7	177.0	283.2	130.6	143.1	114.6
1985 J	149.1	121.1	158.9	190.8	122.2	141.3	143.2	142.5	:	146.4	250.9	178.0	284.2	130.8	143.5	114.7
1985 A	149.1	120.7	159.1P	191.2E	122.2P	141.3	142.7	142.9	180.3	146.3E	251.6	:	286.5	:	143.8	114.0
	RATE OF INCREASE OVER ONE MONTH (IRELAND 3 MONTHS)							(T/T-1)		TAUX DE CROISSANCE SUR UN MOIS (IRLANDE 3 MOIS)						
84 J/J	0.1	-0.2	0.7	0.2	-0.1	0.5	0.2	-0.1	:	-0.2	-0.3	1.5	2.7	0.3	0.6	0.2
84 A/J	0.4	-0.2	0.5	0.5	0.1	0.4	0.2	0.9	1.2	0.4	-0.6	0.7	1.9	0.4	0.0	-0.9
84 S/A	0.4	0.1	0.5	0.8	0.5	0.3	0.1	0.2	:	0.7	2.9	0.2	0.3	0.5	0.1	1.6
84 O/S	0.7	0.6	0.7	1.0	0.7	0.5	0.8	0.6	:	0.4	2.5	0.6	0.9	0.3	0.2	0.8
84 N/S	0.4	0.2	0.3	0.8	0.1	0.0	0.3	0.3	0.7	0.7	1.1	0.4	1.6	0.0	0.6	-0.6
84 D/N	0.2	0.1	0.2	0.6	-0.1	0.2	0.0	-0.1	:	-0.2	1.5	0.7	1.0	0.1	0.1	0.2
85J/84D	0.6	0.6	0.5	1.1	-0.2	0.6	0.3	0.4	:	0.5	2.3	1.8	4.3	0.2	0.4	0.5
85 F/J	0.7	0.4	0.5	1.2	0.3	1.0	0.6	0.8	1.9	0.6	-0.2	0.7	2.7	0.4	0.6	-0.8
85 M/F	0.7	0.3	0.7	0.8	0.7	0.8	0.5	0.9	:	0.8	2.9	0.7	1.5	0.4	0.2	0.4
85 A/M	0.8	0.2	0.7	0.8	0.4	0.4	0.9	2.1	:	0.3	1.6	1.1	1.2	0.4	0.4	0.5
85 M/A	0.4	0.1	0.5	0.7	0.1	0.1	0.1	0.5	1.3	0.7	0.7	0.3	0.3	0.4	0.2	0.4
85 J/M	0.3	0.1	0.4	0.5	-0.1	0.0	0.2	0.2	:	0.0	1.8	-0.2	0.1	0.3	0.6	0.1
85 J/J	0.1	-0.2	0.4	0.2	-0.2	0.5	0.5	-0.2	:	-0.4	-0.7	0.6	0.3	0.2	0.3	0.1
85 A/J	0.0	-0.3	0.1P	0.2 E	0.0P	0.0	-0.4	0.3	1.5	-0.1E	0.3	:	0.8	:	0.2	-0.6
	RATE OF INCREASE OVER 12 MONTHS							(T/T-12)		TAUX DE CROISSANCE SUR 12 MOIS						
84/83 J	6.1	2.2	7.5	10.7	2.8	6.3	6.3	4.5	:	6.5	19.2	12.8	32.9	4.1	4.2	2.6
84/83 A	6.0	1.7	7.4	10.7	2.7	5.7	5.8	5.0	8.0	6.5	18.7	12.0	31.2	4.2	3.7	1.9
84/83 S	5.7	1.5	7.1	10.1	2.7	5.3	4.9	4.7	:	6.2	18.0	11.3	27.1	4.2	3.8	2.3
84/83 O	5.8	2.1	7.0	9.5	3.0	5.8	4.8	5.0	:	6.0	18.0	10.5	25.8	4.2	3.4	2.2
84/83 N	5.6	2.1	6.9	9.2	2.9	5.3	4.6	4.9	6.8	5.8	18.0	9.9	24.9	4.0	4.0	2.2
84/83 D	5.5	2.0	6.7	9.4	2.8	5.3	4.1	4.6	:	5.6	18.1	9.0	21.3	4.0	3.8	2.6
85/84 J	5.6	2.1	6.5	9.3	2.4	5.0	3.8	5.0	:	5.8	19.0	9.5	24.6	3.6	3.7	2.9
85/84 F	5.6	2.3	6.4	9.3	2.3	5.3	3.7	5.4	6.2	5.3	18.3	9.8	25.9	3.5	3.7	1.4
85/84 M	5.9	2.5	6.4	9.4	2.5	5.7	3.9	6.1	:	5.7	18.1	9.6	23.1	3.7	3.7	1.6
85/84 A	6.1	2.5	6.5	9.4	2.5	5.5	4.4	6.9	:	5.8	17.7	10.2	22.2	3.7	3.9	1.9
85/84 M	6.0	2.5	6.5	9.5	2.6	5.3	4.2	7.0	5.2	5.5	17.0	9.9	23.8	3.7	3.9	1.6
85/84 J	6.0	2.3	6.4	9.4	2.5	5.1	4.4	7.0	:	4.9	17.2	9.0	20.1	3.7	4.1	2.5
85/84 J	5.8	2.3	6.1	9.4	2.4	5.1	4.7	6.9	:	4.6	16.7	7.9	17.3	3.6	3.8	2.4
85/84 A	5.5	2.1	5.6P	9.1E	2.3P	4.7	4.0	6.2	5.5	4.1E	17.8	:	16.0	:	4.0	2.7

VERBRAUCHERPREISE  
GESAMTINDEX

CONSUMER PRICES  
GENERAL INDEX

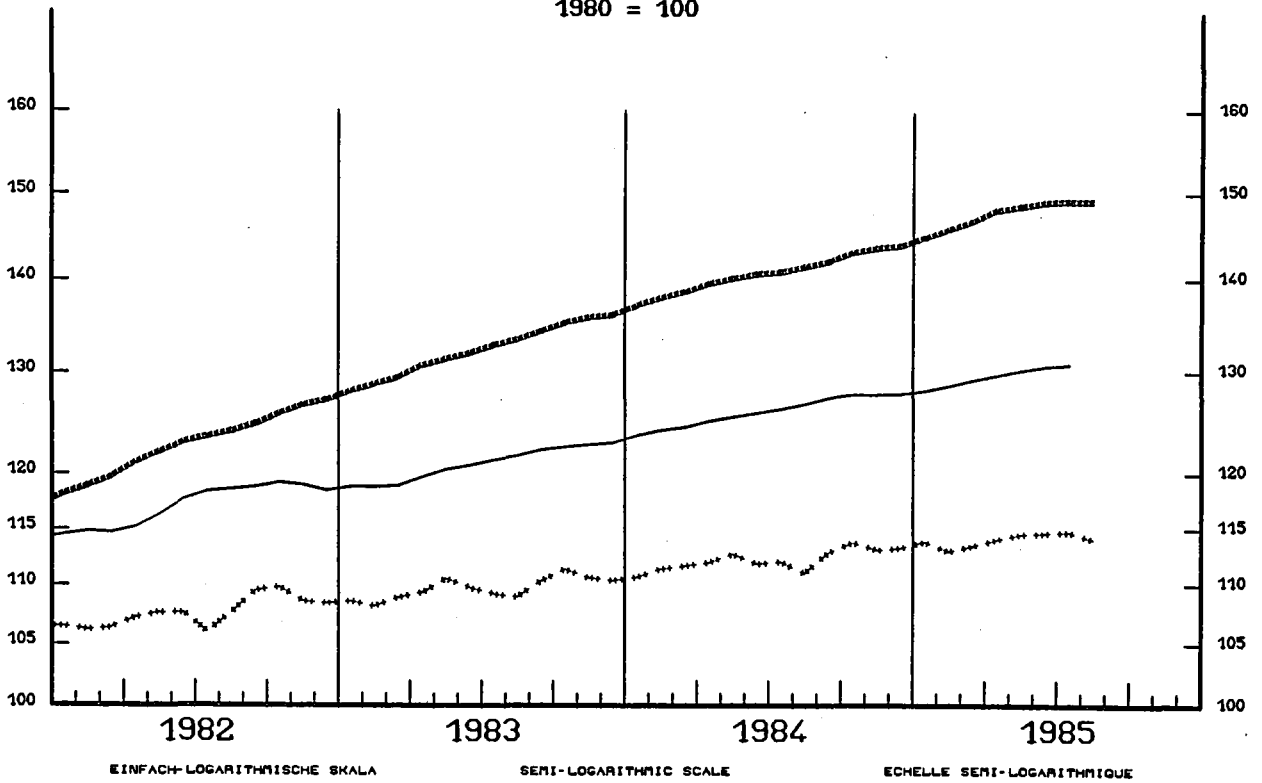
PRIX A LA CONSOMMATION  
INDICE GENERAL

— USA

— EUR 10

\*\*\* JAPAN

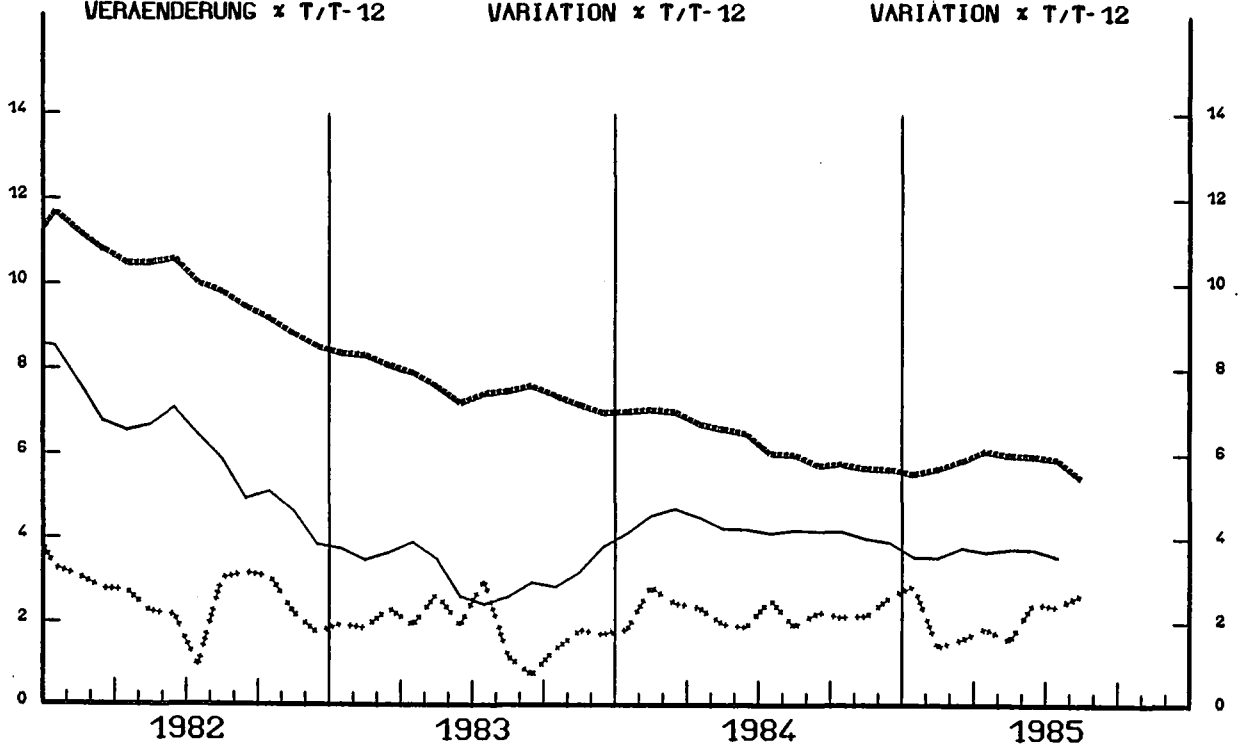
1980 = 100



VERÄNDERUNG x T/T-12

VARIATION x T/T-12

VARIATION x T/T-12



## GENERAL INDEX

## INDICE GENERAL

	SWITZERLAND SUISSE SCHWEIZ	AUSTRIA AUTRICHE OESTERREICH	NORWAY NORVEGE NORGE	SWEDEN SVERIGE	FINLAND FINLANDE SUOMI
	PRICE INDICES		1980 = 100		INDICES DE PRIX
1981 O	106.5	106.8	113.6	112.1	111.9
1982 O	112.5	112.6	126.5	121.7	122.6
1983 O	115.8	116.3	137.2	132.5	132.8
1984 O	119.2	122.9	145.7	143.2	142.2
1984 J	119.0	122.7	146.3	142.8	142.8
1984 A	119.4	123.9	146.2	143.9	143.4
1984 S	119.3	123.7	147.3	144.8	144.2
1984 O	120.1	123.9	148.0	145.5	145.0
1984 N	120.7	124.2	148.2	146.4	145.1
1984 D	120.6	124.3	148.9	148.8	145.2
1985 J	121.8	125.3	150.0	149.6	146.8
1985 F	122.8	126.0	150.4	151.0	147.4
1985 M	123.5	126.6	152.1	152.1	148.8
1985 A	123.4	126.9	152.8	152.7	149.6
1985 M	123.3	126.6	153.2	154.5	151.0
1985 J	123.2	127.0	154.3	153.9	151.4
1985 J	122.9	127.1	154.8	153.8	151.4
1985 A	122.9	127.2	154.4	153.8	151.7
	RATE OF INCREASE OVER ONE MONTH		(T/T-1)		TAUX DE CROISSANCE SUR UN MOIS
84 J/J	-0.2	-0.2	0.4	0.3	0.4
84 A/J	0.4	0.9	-0.1	0.8	0.4
84 S/A	-0.1	-0.2	0.8	0.6	0.6
84 O/S	0.6	0.2	0.4	0.5	0.6
84 N/S	0.5	0.3	0.2	0.6	0.1
84 D/N	-0.1	0.1	0.4	1.6	0.1
85J/84D	1.0	0.8	0.7	0.5	1.1
85 F/J	0.8	0.5	0.3	0.9	0.4
85 M/F	0.5	0.5	1.1	0.7	0.9
85 A/M	-0.1	0.2	0.4	0.4	0.5
85 M/A	-0.1	-0.3	0.3	1.2	1.0
85 J/M	-0.1	0.3	0.7	-0.4	0.3
85 J/J	-0.2	0.1	0.4	-0.1	0.0
85 A/J	0.0	0.1	-0.3	0.0	0.2
	RATE OF INCREASE OVER 12 MONTHS		(T/T-12)		TAUX DE CROISSANCE SUR 12 MOIS
84/83 J	2.8	5.6	6.1	7.4	6.3
84/83 A	2.9	6.0	6.2	7.8	6.7
84/83 S	2.7	5.6	6.1	7.7	6.6
84/83 O	3.1	5.2	6.1	7.3	6.9
84/83 N	3.0	5.3	6.0	7.3	6.0
84/83 D	2.9	5.0	5.9	8.2	6.1
85/84 J	3.5	3.4	5.7	7.3	6.4
85/84 F	4.0	3.4	5.5	8.7	6.4
85/84 M	3.9	3.6	5.5	7.9	6.7
85/84 A	3.6	3.8	5.5	7.7	6.6
85/84 M	3.8	3.8	5.7	8.2	6.4
85/84 J	3.4	3.2	5.9	8.1	6.4
85/84 J	3.3	3.5	5.8	7.7	6.0
85/84 A	2.9	2.6	5.6	6.9	5.8

ORDER FORM

=====

To be sent to : Mr. NIJENHUIS  
EUROSTAT  
J. Monnet Building B2/026

LUXEMBURG

Please send me ..... copies of the publication "Consumer price indices  
1981-1984 - Base 1980 = 100

NAME :

ADDRESS :

TOWN :

COUNTRY :

BON DE COMMANDE

=====

A envoyer à : Mr. NIJENHUIS  
EUROSTAT  
Bâtiment J. Monnet B2/026

LUXEMBOURG

Veillez m'envoyer ..... exemplaires de la publication "Indices des prix  
à la consommation 1981-1984 - Base 1980 = 100

NOM :

ADRESSE :

VILLE :

PAYS :

