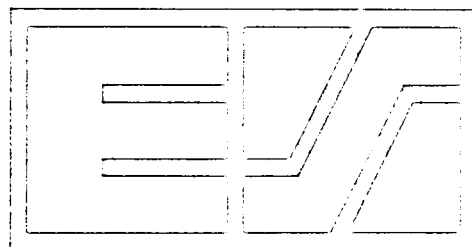


CONSUMER PRICE INDEX



eurostat

RAPID INFORMATION

PRICES: Increase of 0.5% between September and October 1985 for the Community

According to the calculations of Eurostat in Luxembourg the consumer price index for the Community as a whole rose by 0.5% between September and October 1985.

In Greece, a significant increase was recorded for the second consecutive month. After the 5.0% in September an increase of 3.3% is reported for October.

Italy (+1.2%) and Luxemburg (+0.8%) also recorded important increases.

All other countries registered moderate increases: Germany: 0.2%, Netherlands: 0.2%, United Kingdom: 0.2%, France: 0.3%, Denmark: 0.3%, whereas prices in Belgium went down by 0.1%.

The inflation rate for the EC as measured by the CPI for October 1985 compared with October 1984 is 5.1%, which is the lowest rate since 1970.

The figures for the individual countries as follows:

Netherlands	1.7%	France	4.9%
Germany	1.8%	United Kingdom	5.4%
Denmark	3.7%	Ireland	5.4%*
Belgium	4.0%	Italy	9.1%
Luxemburg	4.0%	Greece	21.1%

For the future Member States these rates are: Spain 8.3%** and Portugal 16.0%.

The corresponding rates for the non-Community countries for which Eurostat regularly publishes indices are:

Austria	2.7%	USA	3.1%**
Switzerland	3.0%	Canada	4.1%
Norway	5.6%	Japan	2.1%
Sweden	6.9%		
Finland	4.9%		

* August figures

** September figures

10 □ 1985

CONSUMER PRICES

A

PRIX A LA CONSOMMATION

GENERAL INDEX

INDICE GENERAL

	EUR 10	BR DEUTSCH LAND	FRANCE	ITALIA	NEDER= LAND	BELGIQUE BELGIE	LUXEM= BOURG	UNITED KINGDOM	IRELAND	DANMARK	ELLAS	ESPANA	PORTUGAL	USA	CANADA	JAPAN
		PRICE INDICES							1980 = 100	INDICES DE PRIX						
1981 O	111.7	106.3	113.4	117.8	106.7	107.6	108.1	111.9	120.4	111.7	124.5	114.6	120.0	110.3	112.5	104.9
1982 O	123.0	111.9	126.8	137.2	112.8	117.0	118.2	121.5	141.1	123.0	150.6	131.0	146.9	117.1	124.6	107.7
1983 O	132.4	115.6	139.0	157.3	115.9	126.0	128.4	127.1	155.8	131.5	181.1	147.0	184.3	120.9	131.8	109.7
1984 O	140.7	118.4	149.3	174.3	119.6	134.0	136.7	133.4	169.2	139.8	214.5	163.5	238.4	126.1	137.6	112.1
1984 S	142.0	118.3	151.3	176.7	120.0	135.4	137.3	134.8	:	141.5	219.9	166.4	247.5	127.4	138.4	112.8
1984 O	143.0	119.0	152.3	178.4	120.9	136.0	138.3	135.6	:	142.1	225.3	167.4	249.7	127.7	138.6	113.7
1984 N	143.5	119.2	152.8	179.8	121.0	136.1	138.7	136.1	172.1	143.1	227.8	168.2	253.8	127.7	139.5	113.0
1984 D	143.8	119.3	153.1	180.9	120.9	136.4	138.7	135.9	:	142.8	231.1	169.5	256.2	127.8	139.6	113.2
1985 J	144.7	120.0	153.9	182.9	120.6	137.2	139.1	136.4	:	143.5	236.4	172.6	267.2	128.1	140.2	113.8
1985 F	145.7	120.5	154.7	185.1	121.0	138.7	140.0	137.5	175.3	144.4	236.0	173.8	274.5	128.6	141.1	112.9
1985 M	146.7	120.9	155.8	186.6	121.9	139.8	140.7	138.8	:	145.5	242.7	174.9	278.6	129.2	141.4	113.4
1985 A	148.0	121.1	156.9	188.0	122.4	140.3	142.0	141.8	:	146.0	246.5	176.8	282.0	129.7	142.0	114.0
1985 M	148.5	121.2	157.7	189.4	122.5	140.5	142.1	142.4	177.6	147.0	248.2	177.3	282.9	130.2	142.3	114.5
1985 J	149.0	121.3	158.3	190.4	122.4	140.5	142.4	142.7	:	147.0	252.7	177.0	283.2	130.6	143.1	114.6
1985 J	149.1	121.1	158.9	190.8	122.2	141.3	143.2	142.5	:	146.4	250.9	178.0	284.2	130.8	143.5	114.7
1985 A	149.1	120.7	159.1	191.3	122.2	141.3	142.7	142.9	180.2	146.2	251.6	178.4	286.5	131.1	143.8	113.6
1985 S	149.6	120.9	159.3	192.3	122.8	141.5	142.7	142.8	:	147.0	264.1	180.3	286.7	131.3	143.9	114.7
1985 O	150.3	121.1	159.8P	194.6E	123.0P	141.4	143.9	143.0	:	147.4E	272.9	:	289.7	:	144.3	116.1E
		RATE OF INCREASE OVER ONE MONTH (IRELAND 3 MONTHS)							(T/T-1)	TAUX DE CROISSANCE SUR UN MOIS (IRLANDE 3 MOIS)						
84 S/A	0.4	0.1	0.5	0.8	0.5	0.3	0.1	0.2	:	0.7	2.9	0.2	0.3	0.5	0.1	1.6
84 O/S	0.7	0.6	0.7	1.0	0.7	0.5	0.8	0.6	:	0.4	2.5	0.6	0.9	0.3	0.2	0.8
84 N/S	0.4	0.2	0.3	0.8	0.1	0.0	0.3	0.3	0.7	0.7	1.1	0.4	1.6	0.0	0.6	-0.6
84 D/N	0.2	0.1	0.2	0.6	-0.1	0.2	0.0	-0.1	:	-0.2	1.5	0.7	1.0	0.1	0.1	0.2
85J/84D	0.6	0.6	0.5	1.1	-0.2	0.6	0.3	0.4	:	0.5	2.3	1.8	4.3	0.2	0.4	0.5
85 F/J	0.7	0.4	0.5	1.2	0.3	1.0	0.6	0.8	1.9	0.6	-0.2	0.7	2.7	0.4	0.6	-0.8
85 M/F	0.7	0.3	0.7	0.8	0.7	0.8	0.5	0.9	:	0.8	2.9	0.7	1.5	0.4	0.2	0.4
85 A/M	0.8	0.2	0.7	0.8	0.4	0.4	0.9	2.1	:	0.3	1.6	1.1	1.2	0.4	0.4	0.5
85 M/A	0.4	0.1	0.5	0.7	0.1	0.1	0.1	0.5	1.3	0.7	0.7	0.3	0.3	0.4	0.2	0.4
85 J/M	0.3	0.1	0.4	0.5	-0.1	0.0	0.2	0.2	:	0.0	1.8	-0.2	0.1	0.3	0.6	0.1
85 J/J	0.1	-0.2	0.4	0.2	-0.2	0.5	0.5	-0.2	:	-0.4	-0.7	0.6	0.3	0.2	0.3	0.1
85 A/J	0.0	-0.3	0.1	0.3	0.0	0.0	-0.4	0.3	1.5	-0.1	0.3	0.2	0.8	0.2	0.2	-1.0
85 S/A	0.3	0.2	0.1	0.5	0.5	0.2	0.0	-0.1	:	0.5	5.0	1.1	0.1	0.2	0.1	1.0
85 O/S	0.5	0.2	0.3P	1.2E	0.2P	-0.1	0.8	0.2	:	0.3E	3.3	:	1.0	:	0.3	1.2E
		RATE OF INCREASE OVER 12 MONTHS							(T/T-12)	TAUX DE CROISSANCE SUR 12 MOIS						
84/83 S	5.7	1.5	7.1	10.1	2.7	5.3	4.9	4.7	:	6.2	18.0	11.3	27.1	4.2	3.8	2.3
84/83 O	5.8	2.1	7.0	9.5	3.0	5.8	4.8	5.0	:	6.0	18.0	10.5	25.8	4.2	3.4	2.2
84/83 N	5.6	2.1	6.9	9.2	2.9	5.3	4.6	4.9	6.8	5.8	18.0	9.9	24.9	4.0	4.0	2.2
84/83 D	5.5	2.0	6.7	9.4	2.8	5.3	4.1	4.6	:	5.6	18.1	9.0	21.3	4.0	3.8	2.6
85/84 J	5.6	2.1	6.5	9.3	2.4	5.0	3.8	5.0	:	5.8	19.0	9.5	24.6	3.6	3.7	2.9
85/84 F	5.6	2.3	6.4	9.3	2.3	5.3	3.7	5.4	6.2	5.3	18.3	9.8	25.9	3.5	3.7	1.4
85/84 M	5.9	2.5	6.4	9.4	2.5	5.7	3.9	6.1	:	5.7	18.1	9.6	23.1	3.7	3.7	1.6
85/84 A	6.1	2.5	6.5	9.4	2.5	5.5	4.4	6.9	:	5.8	17.7	10.2	22.2	3.7	3.9	1.9
85/84 M	6.0	2.5	6.5	9.5	2.6	5.3	4.2	7.0	5.2	5.5	17.0	9.9	23.8	3.7	3.9	1.6
85/84 J	6.0	2.3	6.4	9.4	2.5	5.1	4.4	7.0	:	4.9	17.2	9.0	20.1	3.7	4.1	2.5
85/84 J	5.8	2.3	6.1	9.4	2.4	5.1	4.7	6.9	:	4.6	16.7	7.9	17.3	3.6	3.8	2.4
85/84 A	5.5	2.1	5.6	9.1	2.3	4.7	4.0	6.2	5.4	4.1	17.8	7.4	16.0	3.4	4.0	2.3

VERBRAUCHERPREISE
GESAMTINDEX

CONSUMER PRICES
GENERAL INDEX

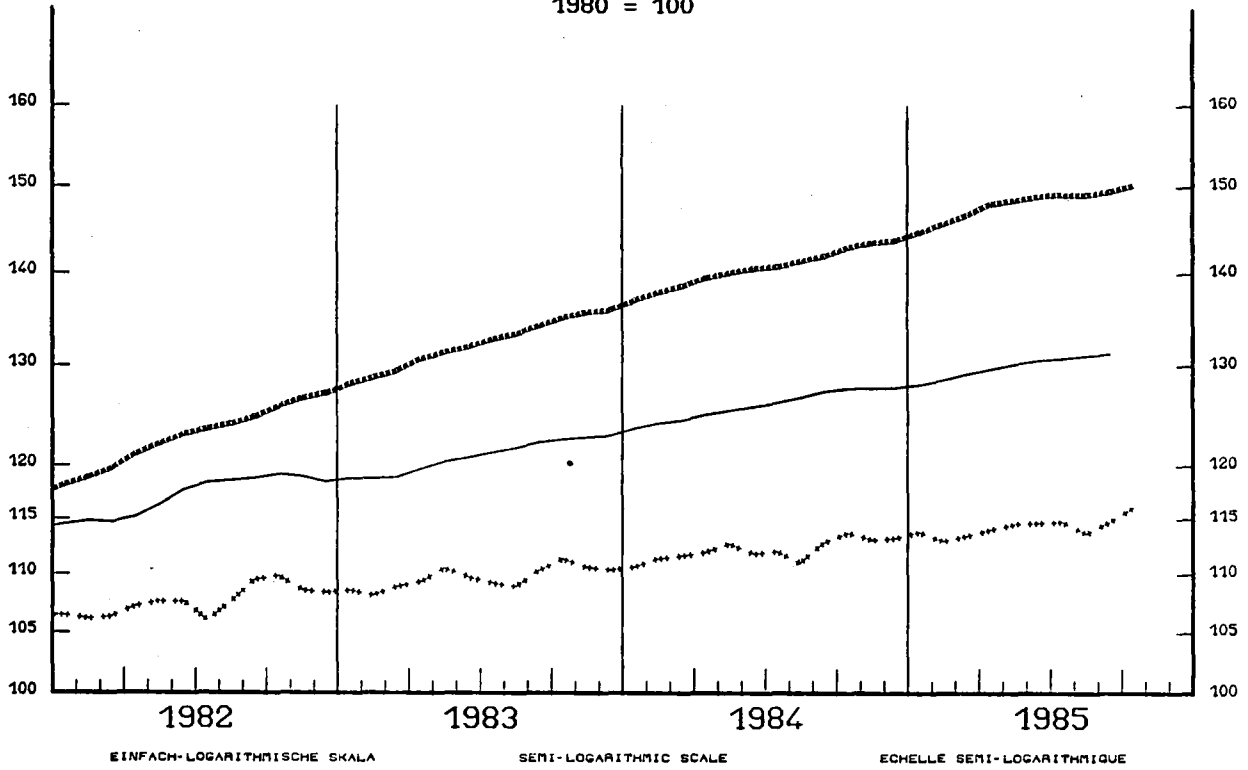
PRIX A LA CONSOMMATION
INDICE GENERAL

— USA

----- EUR 10

..... JAPAN

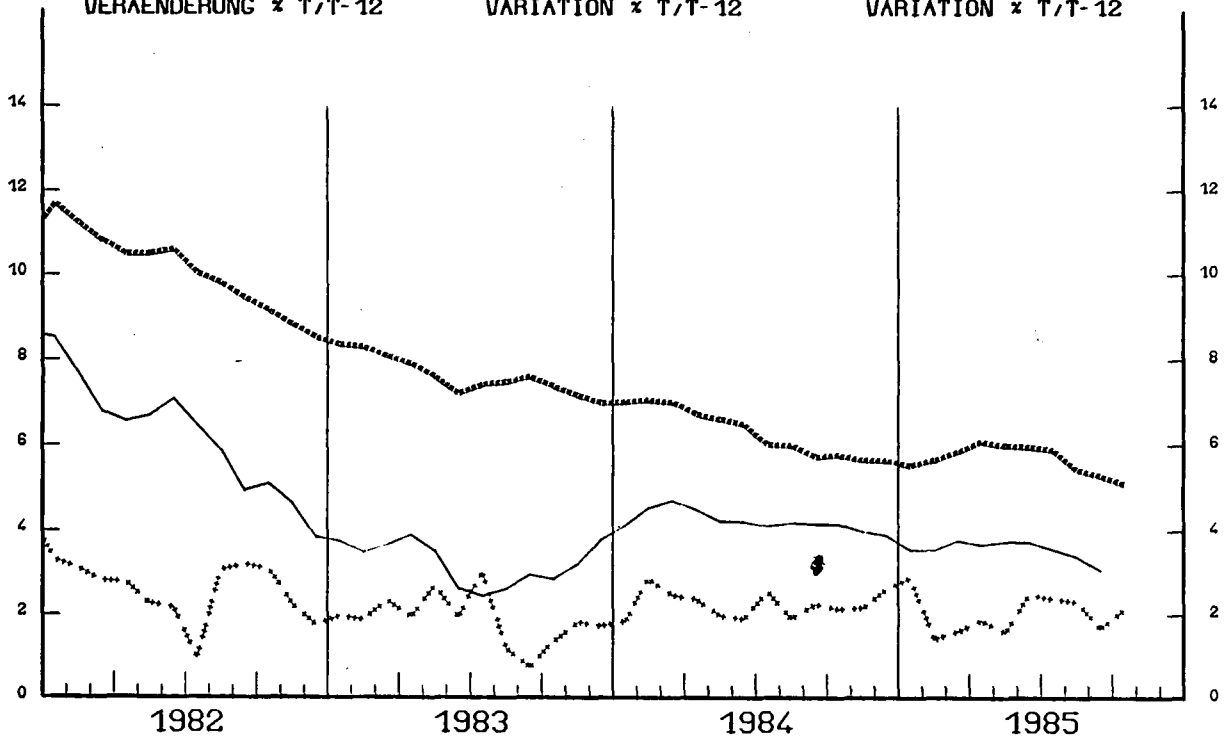
1980 = 100



VERÄNDERUNG x T/T-12

VARIATION x T/T-12

VARIATION x T/T-12



CONSUMER PRICES

0

PRIX A LA CONSOMMATION

GENERAL INDEX

INDICE GENERAL

	SWITZERLAND SUISSE SCHWEIZ	AUSTRIA AUTRICHE OESTERREICH	NORWAY NORVEGE NORGE	SWEDEN SUEDE SVERIGE	FINLAND FINLANDE SUOMI
	PRICE INDICES		1980 = 100		INDICES DE PRIX
1981 O	106.5	106.8	113.6	112.1	111.9
1982 O	112.5	112.6	126.5	121.7	122.6
1983 O	115.8	116.3	137.2	132.5	132.8
1984 O	119.2	122.9	145.7	143.2	142.2
1984 S	119.3	123.7	147.3	144.8	144.2
1984 O	120.1	123.9	148.0	145.5	145.0
1984 N	120.7	124.2	148.2	146.4	145.1
1984 D	120.6	124.3	148.9	148.8	145.2
1985 J	121.8	125.3	150.0	149.6	146.8
1985 F	122.8	126.0	150.4	151.0	147.4
1985 M	123.5	126.6	152.1	152.1	148.8
1985 A	123.4	126.9	152.8	152.7	149.6
1985 M	123.3	126.6	153.2	154.5	151.0
1985 J	123.2	127.0	154.3	153.9	151.4
1985 J	122.9	127.1	154.8	153.8	151.4
1985 A	122.9	127.1	154.4	153.8	151.7
1985 S	123.3	127.2	155.9	154.5	151.9
1985 O	123.7	127.2	156.2	155.5	152.1
	RATE OF INCREASE OVER ONE MONTH		(T/T-1)		TAUX DE CROISSANCE SUR UN MOIS
84 S/A	-0.1	-0.2	0.8	0.6	0.6
84 O/S	0.6	0.2	0.4	0.5	0.6
84 N/S	0.5	0.3	0.2	0.6	0.1
84 D/N	-0.1	0.1	0.4	1.6	0.1
85J/84D	1.0	0.8	0.7	0.5	1.1
85 F/J	0.8	0.5	0.3	0.9	0.4
85 M/F	0.5	0.5	1.1	0.7	0.9
85 A/M	-0.1	0.2	0.4	0.4	0.5
85 M/A	-0.1	-0.3	0.3	1.2	1.0
85 J/M	-0.1	0.3	0.7	-0.4	0.3
85 J/J	-0.2	0.1	0.4	-0.1	0.0
85 A/J	0.0	0.1	-0.3	0.0	0.2
85 S/A	0.3	0.1	1.0	0.5	0.1
85 O/S	0.3	0.0	0.2	0.6	0.1
	RATE OF INCREASE OVER 12 MONTHS		(T/T-12)		TAUX DE CROISSANCE SUR 12 MOIS
84/83 S	2.7	5.6	6.1	7.7	6.6
84/83 O	3.1	5.2	6.1	7.3	6.9
84/83 N	3.0	5.3	6.0	7.3	6.0
84/83 D	2.9	5.0	5.9	8.2	6.1
85/84 J	3.5	3.4	5.7	7.3	6.4
85/84 F	4.0	3.4	5.5	8.7	6.4
85/84 M	3.9	3.6	5.5	7.9	6.7
85/84 A	3.6	3.8	5.5	7.7	6.6
85/84 M	3.8	3.8	5.7	8.2	6.4
85/84 J	3.4	3.2	5.9	8.1	6.4
85/84 J	3.3	3.5	5.8	7.7	6.0
85/84 A	2.9	2.6	5.6	6.9	5.8
85/84 S	3.3	2.9	5.8	6.7	5.3
85/84 O	3.0	2.7	5.6	6.9	4.9