

CONSUMER PRICE INDEX



RAPID INFORMATION

PRICES: The slowing down of inflation continues in November (+0.3%).

According to the calculation of EUROSTAT in Luxembourg the CPI for the Community as a whole rose by 0.3% between October and November 1985.

Increases were rather modest in most of the Member States, between 0 and 0.3%.

However, there were two exceptions: Italy recorded a somewhat larger rise (0.7%), while escalation of prices in Greece continued in November with 2.5% in one month. From August to November, prices in Greece rose by 11.1%.

The quarterly index for Ireland rose by 0.2% between mid-August and mid-November 1985, which corresponds to a monthly average of less than 0.1%.

This is the best result recorded for more than 10 years and shows Ireland as the EC country having the lowest inflation rate over the most recent three months.

The average inflation rate in the Community over the year (November 1985/November 1984) as measured by the CPI is 5.1%. On the basis of data for 11 months and given the fact that price increases are generally low in December, it can be estimated now that the rise for the year 1985 will be around 5.0% for the Community as a whole.

EUROSTAT estimates that the corresponding figures for the individual countries will be as follows:

Germany (FR)	1.8%	France	4.7%
Netherlands	1.9%	Ireland	4.9%
Denmark	3.4%	United Kingdom	5.6%
Luxembourg	4.0%	Italy	8.7%
Belgium	4.1%	Greece	23.5%

Other inflation rates in 1985 estimated by EUROSTAT: for Spain 8%, Portugal 13%, Japan 2%, USA 3%, Canada 4%.

N.B. 1) For the first time EUROSTAT has calculated an index for Europe of the Twelve (EUR-12). It will be seen that for October 1985, the inflation rate over the year for EUR-12 (5.6%) was 0.5% higher than the rate for EUR-10 (5.1%).

2) Attached to this bulletin the reader will also find the annual series from 1955 to 1984 at the new base 1980 = 100 for all the countries for which EUROSTAT published indices.

11 □ 1985

CONSUMER PRICES

A

PRIX A LA CONSOMMATION

GENERAL INDEX

INDICE GENERAL

	EUR 10	BR DEUTSCH LAND	FRANCE	ITALIA	NEDER= LAND	BELGIQUE BELGIE	LUXEM= BOURG	UNITED KINGDOM	IRELAND	DANMARK	ELLAS	ESPANA	PORTUGAL	EUR 12	USA	JAPAN
	PRICE INDICES								INDICES DE PRIX							
	1980 = 100															
1981 O	111.7	106.3	113.4	117.8	106.7	107.6	108.1	111.9	120.4	111.7	124.5	114.6	120.0	112.1	110.3	104.9
1982 O	123.0	111.9	126.8	137.2	112.8	117.0	118.2	121.5	141.1	123.0	150.6	131.0	146.9	124.1	117.1	107.7
1983 O	132.4	115.6	139.0	157.3	115.9	126.0	128.4	127.1	155.8	131.5	181.1	147.0	184.3	134.5	120.9	109.7
1984 O	140.7	118.4	149.3	174.3	119.6	134.0	136.7	133.4	169.2	139.8	214.5	163.5	238.4	144.1	126.1	112.1
1984 O	143.0	119.0	152.3	178.4	120.9	136.0	138.3	135.6	:	142.1	225.3	167.4	249.7	146.7	127.7	113.7
1984 N	143.5	119.2	152.8	179.8	121.0	136.1	138.7	136.1	172.1	143.1	227.8	168.2	253.8	147.3	127.7	113.0
1984 D	143.8	119.3	153.1	180.9	120.9	136.4	138.7	135.9	:	142.8	231.1	169.5	256.2	147.6	127.8	113.2
1985 J	144.7	120.0	153.9	182.9	120.6	137.2	139.1	136.4	:	143.5	236.4	172.6	267.2	148.9	128.1	113.8
1985 F	145.7	120.5	154.7	185.1	121.0	138.7	140.0	137.5	175.3	144.4	236.0	173.8	274.5	149.9	128.6	112.9
1985 M	146.7	120.9	155.8	186.6	121.9	139.8	140.7	138.8	:	145.5	242.7	174.9	278.6	151.0	129.2	113.4
1985 A	148.0	121.1	156.9	188.0	122.4	140.3	142.0	141.8	:	146.0	246.5	176.8	282.0	152.3	129.7	114.0
1985 M	148.5	121.2	157.7	189.4	122.5	140.5	142.1	142.4	177.6	147.0	248.2	177.3	282.9	152.9	130.2	114.5
1985 J	149.0	121.3	158.3	190.4	122.4	140.5	142.4	142.7	:	147.0	252.7	177.0	283.2	153.3	130.6	114.6
1985 J	149.1	121.1	158.9	190.8	122.2	141.3	143.2	142.5	:	146.4	250.9	178.0	284.2	153.4	130.8	114.7
1985 A	149.2	120.7	159.1	191.3	122.2	141.3	142.7	142.9	180.2	146.2	251.6	178.4	286.5	153.6	131.1	113.6
1985 S	149.7	120.9	159.3	192.3	122.8	141.5	142.7	142.8	:	147.0	264.1	180.3	286.7	154.2	131.3	114.7
1985 O	150.3	121.1	159.8	194.3	123.2	141.4	143.9	143.0	:	147.4	272.9	181.2	289.7	154.9	131.9	116.3
1985 N	150.8P	121.3	160.1P	195.7E	123.2	141.8	144.2	143.5	180.5	147.8P	279.6	:	:	:	:	115.2E
	RATE OF INCREASE OVER ONE MONTH (IRELAND 3 MONTHS)								TAUX DE CROISSANCE SUR UN MOIS (IRLANDE 3 MOIS)							
	(T/T-1)															
84 O/S	0.7	0.6	0.7	1.0	0.7	0.5	0.8	0.6	:	0.4	2.5	0.6	0.9	0.7	0.3	0.8
84 N/S	0.4	0.2	0.3	0.8	0.1	0.0	0.3	0.3	0.7	0.7	1.1	0.4	1.6	0.4	0.0	-0.6
84 D/N	0.2	0.1	0.2	0.6	-0.1	0.2	0.0	-0.1	:	-0.2	1.5	0.7	1.0	0.3	0.1	0.2
85J/84D	0.6	0.6	0.5	1.1	-0.2	0.6	0.3	0.4	:	0.5	2.3	1.8	4.3	0.8	0.2	0.5
85 F/J	0.7	0.4	0.5	1.2	0.3	1.0	0.6	0.8	1.9	0.6	-0.2	0.7	2.7	0.7	0.4	-0.8
85 M/F	0.7	0.3	0.7	0.8	0.7	0.8	0.5	0.9	:	0.8	2.9	0.7	1.5	0.7	0.4	0.4
85 A/M	0.8	0.2	0.7	0.8	0.4	0.4	0.9	2.1	:	0.3	1.6	1.1	1.2	0.9	0.4	0.5
85 M/A	0.4	0.1	0.5	0.7	0.1	0.1	0.1	0.5	1.3	0.7	0.7	0.3	0.3	0.4	0.4	0.4
85 J/M	0.3	0.1	0.4	0.5	-0.1	0.0	0.2	0.2	:	0.0	1.8	-0.2	0.1	0.2	0.3	0.1
85 J/J	0.1	-0.2	0.4	0.2	-0.2	0.5	0.5	-0.2	:	-0.4	-0.7	0.6	0.3	0.1	0.2	0.1
85 A/J	0.1	-0.3	0.1	0.3	0.0	0.0	-0.4	0.3	1.5	-0.1	0.3	0.2	0.8	0.1	0.2	-1.0
85 S/A	0.3	0.2	0.1	0.5	0.5	0.2	0.0	-0.1	:	0.5	5.0	1.1	0.1	0.4	0.2	1.0
85 O/S	0.4	0.2	0.3	1.0	0.3	-0.1	0.8	0.2	:	0.3	3.3	0.5	1.0	0.5	0.4	1.4
85 N/O	0.3P	0.2	0.2P	0.7E	0.0P	0.2	0.2	0.3	0.2	0.3P	2.5	:	:	:	:	-0.9E
	RATE OF INCREASE OVER 12 MONTHS								TAUX DE CROISSANCE SUR 12 MOIS							
	(T/T-12)															
84/83 O	5.8	2.1	7.0	9.5	3.0	5.8	4.8	5.0	:	6.0	18.0	10.5	25.8	6.6	4.2	2.2
84/83 N	5.6	2.1	6.9	9.2	2.9	5.3	4.6	4.9	6.8	5.8	18.0	9.9	24.9	6.4	4.0	2.2
84/83 D	5.5	2.0	6.7	9.4	2.8	5.3	4.1	4.6	:	5.6	18.1	9.0	21.3	6.2	4.0	2.6
85/84 J	5.6	2.1	6.5	9.3	2.4	5.0	3.8	5.0	:	5.8	19.0	9.5	24.6	6.3	3.6	2.9
85/84 F	5.6	2.3	6.4	9.3	2.3	5.3	3.7	5.4	6.2	5.3	18.3	9.8	25.9	6.4	3.5	1.4
85/84 M	5.9	2.5	6.4	9.4	2.5	5.7	3.9	6.1	:	5.7	18.1	9.6	23.1	6.6	3.7	1.6
85/84 A	6.1	2.5	6.5	9.4	2.5	5.5	4.4	6.9	:	5.8	17.7	10.2	22.2	6.7	3.7	1.9
85/84 M	6.0	2.5	6.5	9.5	2.6	5.3	4.2	7.0	5.2	5.5	17.0	9.9	23.8	6.8	3.7	1.6
85/84 J	6.0	2.3	6.4	9.4	2.5	5.1	4.4	7.0	:	4.9	17.2	9.0	20.1	6.5	3.7	2.5
85/84 J	5.8	2.3	6.1	9.4	2.4	5.1	4.7	6.9	:	4.6	16.7	7.9	17.3	6.2	3.6	2.4
85/84 A	5.5	2.1	5.6	9.1	2.3	4.7	4.0	6.2	5.4	4.1	17.8	7.4	16.0	5.9	3.4	2.3
85/84 S	5.4	2.2	5.3	8.8	2.3	4.6	3.9	5.9	:	3.9	20.1	8.3	15.8	5.9	3.1	1.7
85/84 O	5.1	1.8	4.9	8.9	1.9	4.0	4.0	5.4	:	3.7	21.1	8.2	16.0	5.6	3.2	2.3
85/84 N	5.1P	1.8	4.8P	8.8E	1.8P	4.2	4.0	5.5	4.9	3.3P	22.7	:	:	:	:	1.9E

A BIS

VERBRAUCHERPREISE
GESAMTINDEX

CONSUMER PRICES
GENERAL INDEX

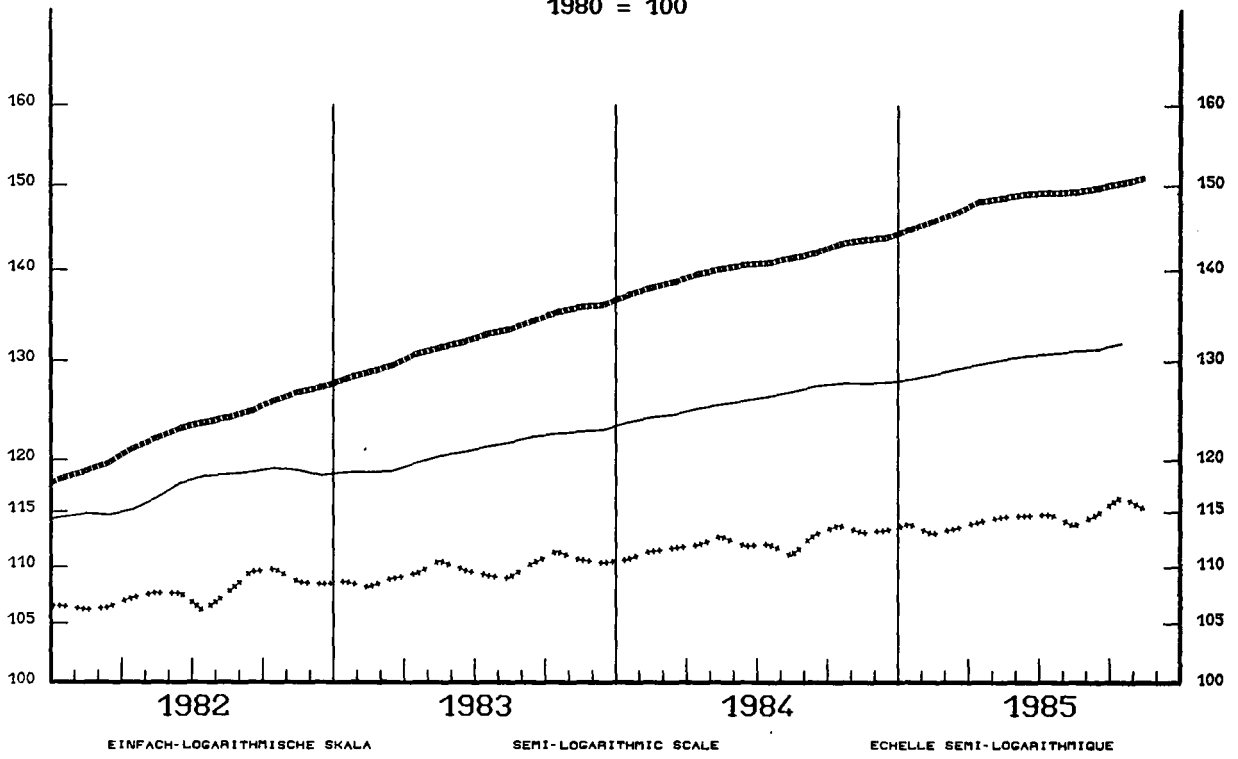
PRIX A LA CONSOMMATION
INDICE GENERAL

— USA

—••••• EUR 10

••••• JAPAN

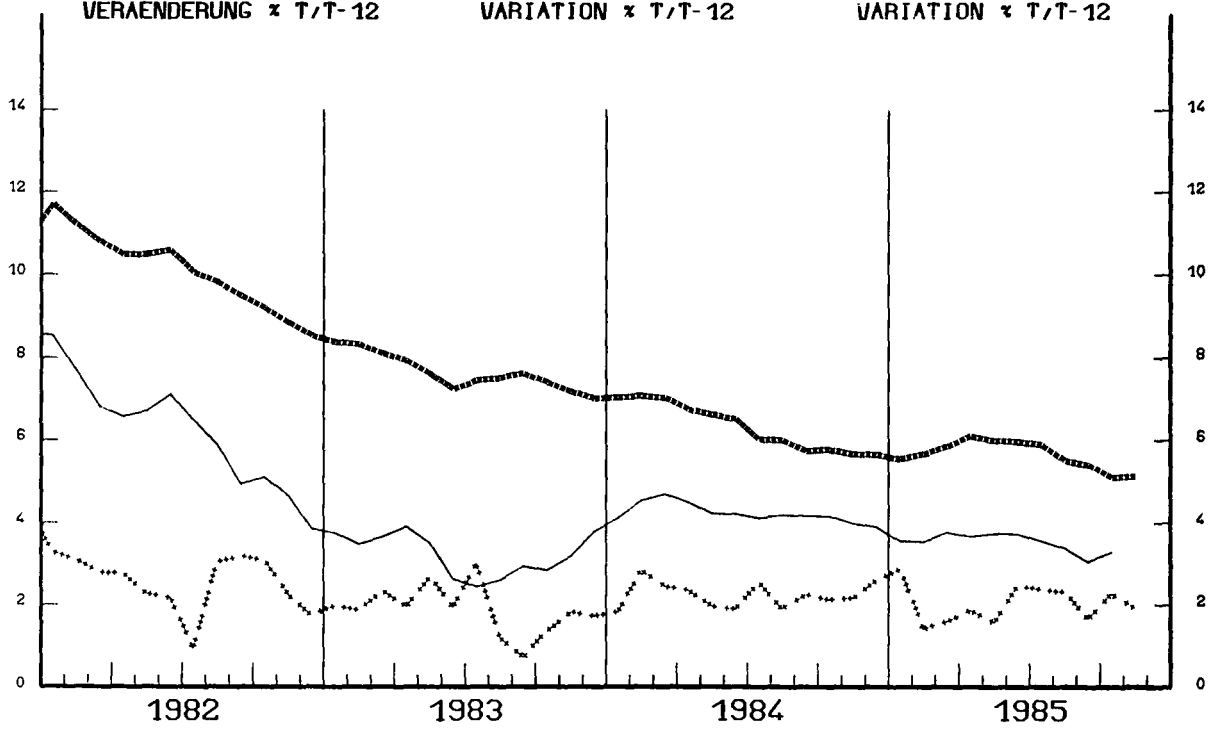
1980 = 100



VERÄNDERUNG x T/T-12

VARIATION x T/T-12

VARIATION x T/T-12



CONSUMER PRICES

B

PRIX A LA CONSOMMATION

GENERAL INDEX

INDICE GENERAL

	SWITZERLAND SUISSE SCHWEIZ	AUSTRIA AUTRICHE OESTERREICH	NORWAY NORVEGE NORGE	SWEDEN SUEDE SVERIGE	FINLAND FINLANDE SUOMI	CANADA CANADA CANADA
	PRICE INDICES			1980 = 100	INDICES DE PRIX	
1981 O	106.5	106.8	113.6	112.1	111.9	112.5
1982 O	112.5	112.6	126.5	121.7	122.6	124.6
1983 O	115.8	116.3	137.2	132.5	132.8	131.8
1984 O	119.2	122.9	145.7	143.2	142.2	137.6
1984 O	120.1	123.9	148.0	145.5	145.0	138.6
1984 N	120.7	124.2	148.2	146.4	145.1	139.5
1984 D	120.6	124.3	148.9	148.8	145.2	139.6
1985 J	121.8	125.3	150.0	149.6	146.8	140.2
1985 F	122.8	126.0	150.4	151.0	147.4	141.1
1985 M	123.5	126.6	152.1	152.1	148.8	141.4
1985 A	123.4	126.9	152.8	152.7	149.6	142.0
1985 M	123.3	126.6	153.2	154.5	151.0	142.3
1985 J	123.2	127.0	154.3	153.9	151.4	143.1
1985 J	122.9	127.1	154.8	153.8	151.4	143.5
1985 A	122.9	127.1	154.4	153.8	151.7	143.8
1985 S	123.3	127.2	155.9	154.5	151.9	143.9
1985 O	123.7	127.2	156.3	155.5	152.1	144.4
1985 N	124.5	127.5	156.7	156.5	152.2	145.0
	RATE OF INCREASE OVER ONE MONTH			(T/T-1)	TAUX DE CROISSANCE SUR UN MOIS	
84 O/S	0.6	0.2	0.4	0.5	0.6	0.2
84 M/S	0.5	0.3	0.2	0.6	0.1	0.6
84 D/M	-0.1	0.1	0.4	1.6	0.1	0.1
85J/84D	1.0	0.8	0.7	0.5	1.1	0.4
85 F/J	0.8	0.5	0.3	0.9	0.4	0.6
85 M/F	0.5	0.5	1.1	0.7	0.9	0.2
85 A/M	-0.1	0.2	0.4	0.4	0.5	0.4
85 M/A	-0.1	-0.3	0.3	1.2	1.0	0.2
85 J/M	-0.1	0.3	0.7	-0.4	0.3	0.6
85 J/J	-0.2	0.1	0.4	-0.1	0.0	0.3
85 A/J	0.0	0.1	-0.3	0.0	0.2	0.2
85 S/A	0.3	0.1	1.0	0.5	0.1	0.1
85 O/S	0.3	0.0	0.2	0.6	0.1	0.4
85 N/O	0.7	0.2	0.3	0.7	0.1	0.4
	RATE OF INCREASE OVER 12 MONTHS			(T/T-12)	TAUX DE CROISSANCE SUR 12 MOIS	
84/83 O	3.1	5.2	6.1	7.3	6.9	3.4
84/83 N	3.0	5.3	6.0	7.3	6.0	4.0
84/83 D	2.9	5.0	5.9	8.2	6.1	3.8
85/84 J	3.5	3.4	5.7	7.3	6.4	3.7
85/84 F	4.0	3.4	5.5	8.7	6.4	3.7
85/84 M	3.9	3.6	5.5	7.9	6.7	3.7
85/84 A	3.6	3.8	5.5	7.7	6.6	3.9
85/84 M	3.8	3.8	5.7	8.2	6.4	3.9
85/84 J	3.4	3.2	5.9	8.1	6.4	4.1
85/84 J	3.3	3.5	5.8	7.7	6.0	3.8
85/84 A	2.9	2.6	5.6	6.9	5.8	4.0
85/84 S	3.3	2.9	5.8	6.7	5.3	4.0
85/84 O	3.0	2.7	5.6	6.9	4.9	4.2
85/84 N	3.1	2.6	5.7	6.9	4.9	4.0

CONSUMER PRICE

C

PRIX A LA CONSOMMATION

GENERAL INDEX

INDICE GENERAL

	EUR10	BR DEUTSCH LAND	FRANCE	ITALIA	NEDER- LAND	BELGIQUE BELGIE	LUXEM- BOURG	UNITED KINGDOM	IRELAND	DANMARK	ELLAS	ESPAÑA	PORTU- GAL	USA	CANADA	JAPAN
	PRICE INDICES							1980 = 100	INDICES DE PRIX							
1955	25.2	42.7	20.0	16.8	28.9	33.5	38.2	16.3	15.3	19.8	19.2	9.2	10.7	32.5	32.1	22.4
1956	25.9	43.7	20.4	17.4	29.7	34.4	38.4	17.2	16.0	21.0	19.9	9.7	11.0	33.0	32.5	22.5
1957	26.5	44.6	21.0	17.6	30.8	35.5	40.1	17.8	16.6	21.2	20.4	10.7	11.2	34.1	33.5	23.2
1958	27.7	45.6	24.2	18.1	31.3	36.0	40.5	18.3	17.4	21.3	20.6	12.2	11.4	35.0	34.5	23.1
1959	28.2	46.1	25.6	18.1	31.6	36.4	40.6	18.4	17.4	21.6	21.1	13.1	11.5	35.4	34.9	23.3
1960	28.7	46.7	26.6	18.4	32.3	36.5	40.8	18.6	17.5	22.0	21.4	13.4	11.7	35.9	35.2	24.0
1961	29.4	47.9	27.3	18.6	32.8	36.9	41.0	19.3	17.9	22.7	21.8	13.5	11.9	36.3	35.7	25.3
1962	30.6	49.7	28.7	19.7	33.6	37.2	41.4	20.0	18.7	24.4	21.7	14.3	12.2	36.7	36.0	27.0
1963	31.8	51.2	30.4	21.1	34.7	38.2	42.5	20.5	19.2	25.9	22.4	15.5	12.5	37.2	36.6	29.3
1964	32.9	52.4	31.4	22.4	36.7	39.8	43.9	21.1	20.4	26.7	22.6	16.6	12.9	37.7	37.4	30.4
1965	34.1	54.1	32.2	23.4	38.4	41.4	45.3	22.2	21.5	28.4	23.2	18.8	13.4	38.3	38.2	32.4
1966	35.3	56.0	33.1	23.9	40.6	43.1	46.5	23.0	22.1	30.4	24.4	20.0	14.0	39.4	39.6	34.1
1967	36.2	56.9	34.0	24.8	42.0	44.4	47.9	23.6	22.8	32.9	24.8	21.3	14.8	40.5	41.1	35.4
1968	37.2	57.8	35.5	25.1	43.6	45.6	49.1	24.7	23.9	35.5	24.9	22.3	15.7	42.2	42.7	37.3
1969	38.7	58.9	37.9	25.8	46.8	47.0	50.3	26.1	25.7	36.7	25.5	22.8	17.1	44.5	44.7	39.3
1970	40.5	61.0	39.9	27.1	48.9	49.1	52.6	27.7	27.8	39.2	26.3	24.1	18.2	47.1	46.1	42.3
1971	42.9	64.1	42.1	28.4	52.6	51.5	55.0	30.3	30.2	41.4	27.1	26.1	20.4	49.1	47.5	44.9
1972	45.5	67.7	44.6	30.0	56.8	54.5	57.9	32.5	32.9	44.1	28.3	28.3	22.5	50.7	49.7	44.9
1973	49.2	72.4	47.9	33.3	61.4	57.8	61.4	35.5	36.6	48.2	32.7	31.5	25.4	53.9	53.5	52.4
1974	55.2	77.4	54.4	39.6	67.4	65.2	67.3	41.1	42.8	55.6	41.5	36.5	31.8	59.9	59.4	65.2
1975	62.2	82.0	60.8	46.4	74.1	73.5	74.5	51.1	51.8	61.0	47.0	42.6	36.7	65.3	65.8	72.9
1976	68.3	85.6	66.6	54.1	80.8	80.2	81.8	59.6	61.1	66.4	53.3	50.2	44.5	69.1	70.8	79.7
1977	75.1	88.7	72.9	64.1	86.0	85.9	87.3	69.0	69.4	73.4	59.8	62.5	56.5	73.6	76.4	86.1
1978	80.7	91.1	79.5	71.9	89.6	89.8	90.0	74.7	74.7	81.2	67.3	74.8	69.3	79.2	83.1	89.4
1979	88.2	94.9	88.0	82.5	93.5	93.8	94.1	84.8	84.6	89.0	80.1	86.5	85.6	88.1	90.8	92.6
1980	100.0	100.0	100.0	100.0	100.0	100.0	100.0	100.0	100.0	100.0	100.0	100.0	100.0	100.0	100.0	100.0
1981	111.7	106.3	113.4	117.8	106.7	107.6	108.1	111.9	120.4	111.7	124.5	114.6	120.0	110.3	112.5	104.9
1982	123.0	111.9	126.8	137.2	112.8	117.0	118.2	121.5	141.1	123.0	150.5	131.1	147.3	117.1	124.6	107.7
1983	132.4	115.6	139.0	157.3	115.9	126.0	128.4	127.1	155.8	131.5	181.4	147.0	184.3	120.9	131.8	109.7
1984	140.7	118.4	149.2	174.3	119.6	134.0	135.7	133.4	169.2	139.8	214.6	163.6	237.5	126.1	137.6	112.1

GENERAL INDEX

INDICE GENERAL

	SWITZERLAND SUISSE SCHWEITZ	AUSTRIA AUTRICHE OESTERREICH	NORWAY NORVEGE NORGE	SWEDEN SUEDE SVERIGE	FINLAND FINLANDE SUOMI
	PRICE INDICES	1980 = 100		INDICES DE PRIX	
1955	41.8	34.1	25.2	23.3	14.6
1956	42.4	35.4	19.4	24.3	16.3
1957	43.2	36.4	25.0	25.4	18.5
1958	44.0	37.1	28.1	26.6	20.2
1959	43.6	37.5	28.7	26.8	20.5
1960	44.4	38.3	28.9	27.8	21.2
1961	45.2	39.6	29.5	28.5	21.6
1962	47.1	41.3	31.1	29.8	22.6
1963	48.7	42.5	31.9	30.6	23.7
1964	50.3	44.1	33.7	31.7	26.1
1965	51.9	46.3	35.1	33.3	27.4
1966	54.4	47.3	36.2	35.4	28.4
1967	56.6	49.2	37.9	37.0	30.0
1968	57.9	50.5	39.2	37.7	32.5
1969	59.5	52.1	40.4	38.7	33.3
1970	61.6	54.4	44.6	41.3	34.2
1971	65.6	56.9	47.5	44.5	36.4
1972	70.0	60.5	50.9	47.1	39.0
1973	76.2	65.1	54.7	50.3	43.6
1974	83.5	71.3	59.9	55.3	51.2
1975	89.1	77.3	66.8	60.7	60.3
1976	90.7	83.0	72.9	67.0	68.9
1977	92.1	87.6	79.5	74.6	77.7
1978	92.8	90.7	86.0	82.1	83.5
1979	96.1	94.0	90.2	88.0	89.6
1980	100.0	100.0	100.0	100.0	100.0
1981	106.5	106.8	113.6	112.1	111.9
1982	112.5	112.6	126.5	121.7	122.6
1983	115.8	116.3	137.2	132.5	132.8
1984	119.2	122.9	145.7	143.2	142.2