

CONSUMER PRICE INDEX



RAPID INFORMATION

THE CONSUMER PRICE INDEX FOR DECEMBER AND THE YEAR 1985

The CPI for the Community as a whole (EUR 10) rose by 0.3% between November and December 1985. This brings the inflation rate over-twelve months (December 1985 compared to December 1984) to 5.2 %, against 5.5 % in 1984, 7.2 % in 1983, 8.5 % in 1982 and 11.7 % in 1981.

Increases of the CPI were moderate in most of the Member States (between -0.2 % in the Netherlands and +0.2 % in Luxemburg); the exceptions were Italy where prices went up by 0.7 % and especially Greece where the escalation of prices continued in December with a rise of 3.3 % bringing thus the annual inflation to 25 %.

For the other EC-countries the rates for the same period (Dec. 1985/Dec. 1984) were as follows :

Netherlands	1.7 %	Belgium	4.0 %	Ireland	4.9 %
Germany	1.8 %	Luxemburg	4.1 %	United Kingdom	5.7 %
Denmark	3.6 %	France	4.7 %	Italy	9.0 %

For the new Member States the corresponding rates are 16.8 % for Portugal and about 8 % for Spain. The increase over-the-year for Japan was about 1.7 % and that for USA about 3.2 %. For the other non-EC countries for which Eurostat regularly publishes figures, rates are as follows :

Switzerland	3.3 %	Norway	5.6 %	Finland	5.0 %
Austria	2.8 %	Sweden	6.7 % (E)	Canada	4.0 % (E)

N.B. Note for readers

Starting from number 1-1986 this publication will no longer be distributed free.

It can be obtained in future by subscription which includes :

- 12 monthly editions giving the general index
- 4 quarterly bulletins giving the consumer price indices for the eight main consumption groups and twenty sub-groups

The subscription costs 1 300 BF.

Readers can take out a subscription by completing the order form attached.

Also available in FR

12 □ 1985

CONSUMER PRICES

A

PRIX A LA CONSOMMATION

GENERAL INDEX

INDICE GENERAL

	EUR 10	BR DEUTSCH LAND	FRANCE	ITALIA	NEDER= LAND	BELGIQUE BELGIE	LUXEM= BOURG	UNITED KINGDOM	IRELAND	DANMARK	ELLAS	ESPANA	PORTUGAL	EUR 12	USA	JAPAN
	PRICE INDICES								1980 = 100				INDICES DE PRIX			
1981 O	111.7	106.3	113.4	117.8	106.7	107.6	108.1	111.9	120.4	111.7	124.5	114.6	120.0	112.1	110.3	104.9
1982 O	123.0	111.9	126.8	137.2	112.8	117.0	118.2	121.5	141.1	123.0	150.6	131.0	146.9	124.1	117.1	107.7
1983 O	132.4	115.6	139.0	157.3	115.9	126.0	128.4	127.1	155.8	131.5	181.1	147.0	184.3	134.5	120.9	109.7
1984 O	140.7	118.4	149.3	174.3	119.6	134.0	136.7	133.4	169.2	139.8	214.5	163.5	238.4	144.1	126.1	112.1
1985 O	148.6P	121.0P	158.0P	190.3P	122.3P	140.5P	142.3P	141.5P	178.4P	146.4P	255.9P	:	284.1P	153.0P	:	114.4P
1984 D	143.8	119.3	153.1	180.9	120.9	136.4	138.7	135.9	:	142.8	231.1	169.5	256.2	147.6	127.8	113.2
1985 J	144.7	120.0	153.9	182.9	120.6	137.2	139.1	136.4	:	143.5	236.4	172.6	267.2	148.9	128.1	113.8
1985 F	145.7	120.5	154.7	185.1	121.0	138.7	140.0	137.5	175.3	144.4	236.0	173.8	274.5	149.9	128.6	112.9
1985 M	146.7	120.9	155.8	186.6	121.9	139.8	140.7	138.8	:	145.5	242.7	174.9	278.6	151.0	129.2	113.4
1985 A	148.0	121.1	156.9	188.0	122.4	140.3	142.0	141.8	:	146.0	246.5	176.8	282.0	152.3	129.7	114.0
1985 M	148.5	121.2	157.7	189.4	122.5	140.5	142.1	142.4	177.6	147.0	248.2	177.3	282.9	152.9	130.2	114.5
1985 J	149.0	121.3	158.3	190.4	122.4	140.5	142.4	142.7	:	147.0	252.7	177.0	283.2	153.3	130.6	114.6
1985 J	149.1	121.1	158.9	190.8	122.2	141.3	143.2	142.5	:	146.4	250.9	178.0	284.2	153.4	130.8	114.7
1985 A	149.2	120.7	159.1	191.3	122.2	141.3	142.7	142.9	180.2	146.2	251.6	178.4	286.5	153.6	131.1	113.6
1985 S	149.7	120.9	159.3	192.3	122.8	141.5	142.7	142.8	:	147.0	264.1	180.3	286.7	154.2	131.3	114.7
1985 O	150.3	121.1	159.8	194.3	123.2	141.4	143.9	143.0	:	147.4	272.9	181.0	289.7	154.9	131.9	116.3
1985 N	150.9	121.3	160.1	195.8	123.2	141.8	144.2	143.5	180.5	148.0	279.6	182.5	294.4	155.5	132.3	115.1
1985 D	151.3	121.4	160.3	197.2E	123.0E	141.8	144.5	143.7	:	148.0	288.8	:	299.4	156.0	:	115.1E
	RATE OF INCREASE OVER ONE MONTH (IRELAND 3 MONTHS)								(T/T-1)				TAUX DE CROISSANCE SUR UN MOIS (IRLANDE 3 MOIS)			
84 D/N	0.2	0.1	0.2	0.6	-0.1	0.2	0.0	-0.1	:	-0.2	1.5	0.7	1.0	0.3	0.1	0.2
85J/84D	0.6	0.6	0.5	1.1	-0.2	0.6	0.3	0.4	:	0.5	2.3	1.8	4.3	0.8	0.2	0.5
85 F/J	0.7	0.4	0.5	1.2	0.3	1.0	0.6	0.8	1.9	0.6	-0.2	0.7	2.7	0.7	0.4	-0.8
85 M/F	0.7	0.3	0.7	0.8	0.7	0.8	0.5	0.9	:	0.8	2.9	0.7	1.5	0.7	0.4	0.4
85 A/M	0.8	0.2	0.7	0.8	0.4	0.4	0.9	2.1	:	0.3	1.6	1.1	1.2	0.9	0.4	0.5
85 M/A	0.4	0.1	0.5	0.7	0.1	0.1	0.1	0.5	1.3	0.7	0.7	0.3	0.3	0.4	0.4	0.4
85 J/M	0.3	0.1	0.4	0.5	-0.1	0.0	0.2	0.2	:	0.0	1.8	-0.2	0.1	0.2	0.3	0.1
85 J/J	0.1	-0.2	0.4	0.2	-0.2	0.5	0.5	-0.2	:	-0.4	-0.7	0.6	0.3	0.1	0.2	0.1
85 A/J	0.1	-0.3	0.1	0.3	0.0	0.0	-0.4	0.3	1.5	-0.1	0.3	0.2	0.8	0.1	0.2	-1.0
85 S/A	0.3	0.2	0.1	0.5	0.5	0.2	0.0	-0.1	:	0.5	5.0	1.1	0.1	0.4	0.3	1.0
85 O/S	0.4	0.2	0.3	1.0	0.3	-0.1	0.8	0.2	:	0.3	3.3	0.4	1.0	0.4	0.3	1.4
85 N/O	0.4	0.2	0.2	0.8	0.0	0.2	0.2	0.3	0.2	0.4	2.5	0.8	1.6	0.4	0.3	-1.0
85 D/N	0.3	0.1	0.1	0.7E	-0.2E	0.0	0.2	0.1	:	0.0	3.3	:	1.7	0.3	:	0.0E
	RATE OF INCREASE OVER 12 MONTHS								(T/T-12)				TAUX DE CROISSANCE SUR 12 MOIS			
84/83 D	5.5	2.0	6.7	9.4	2.8	5.3	4.1	4.6	:	5.6	18.1	9.0	21.3	6.2	4.0	2.6
85/84 J	5.6	2.1	6.5	9.3	2.4	5.0	3.8	5.0	:	5.8	19.0	9.5	24.6	6.3	3.6	2.9
85/84 F	5.6	2.3	6.4	9.3	2.3	5.3	3.7	5.4	6.2	5.3	18.3	9.8	25.9	6.4	3.5	1.4
85/84 M	5.9	2.5	6.4	9.4	2.5	5.7	3.9	6.1	:	5.7	18.1	9.6	23.1	6.6	3.7	1.6
85/84 A	6.1	2.5	6.5	9.4	2.5	5.5	4.4	6.9	:	5.8	17.7	10.2	22.2	6.7	3.7	1.9
85/84 M	6.0	2.5	6.5	9.5	2.6	5.3	4.2	7.0	5.2	5.5	17.0	9.9	23.8	6.8	3.7	1.6
85/84 J	6.0	2.3	6.4	9.4	2.5	5.1	4.4	7.0	:	4.9	17.2	9.0	20.1	6.5	3.7	2.5
85/84 J	5.8	2.3	6.1	9.4	2.4	5.1	4.7	6.9	:	4.6	16.7	7.9	17.3	6.2	3.6	2.4
85/84 A	5.5	2.1	5.6	9.1	2.3	4.7	4.0	6.2	5.4	4.1	17.8	7.4	16.0	5.9	3.4	2.3
85/84 S	5.4	2.2	5.3	8.8	2.3	4.6	3.9	5.9	:	3.9	20.1	8.3	15.8	5.9	3.2	1.7
85/84 O	5.1	1.8	4.9	8.9	1.9	4.0	4.0	5.4	:	3.7	21.1	8.1	16.0	5.6	3.2	2.3
85/84 N	5.1	1.8	4.8	8.9	1.8	4.2	4.0	5.5	4.9	3.4	22.7	8.4	16.0	5.6	3.6	1.9
85/84 D	5.2	1.8	4.7	9.0E	1.7E	4.0	4.1	5.7	:	3.6	25.0	:	16.8	5.7	:	1.7E

VERBRAUCHERPREISE
GESAMTINDEX

CONSUMER PRICES
GENERAL INDEX

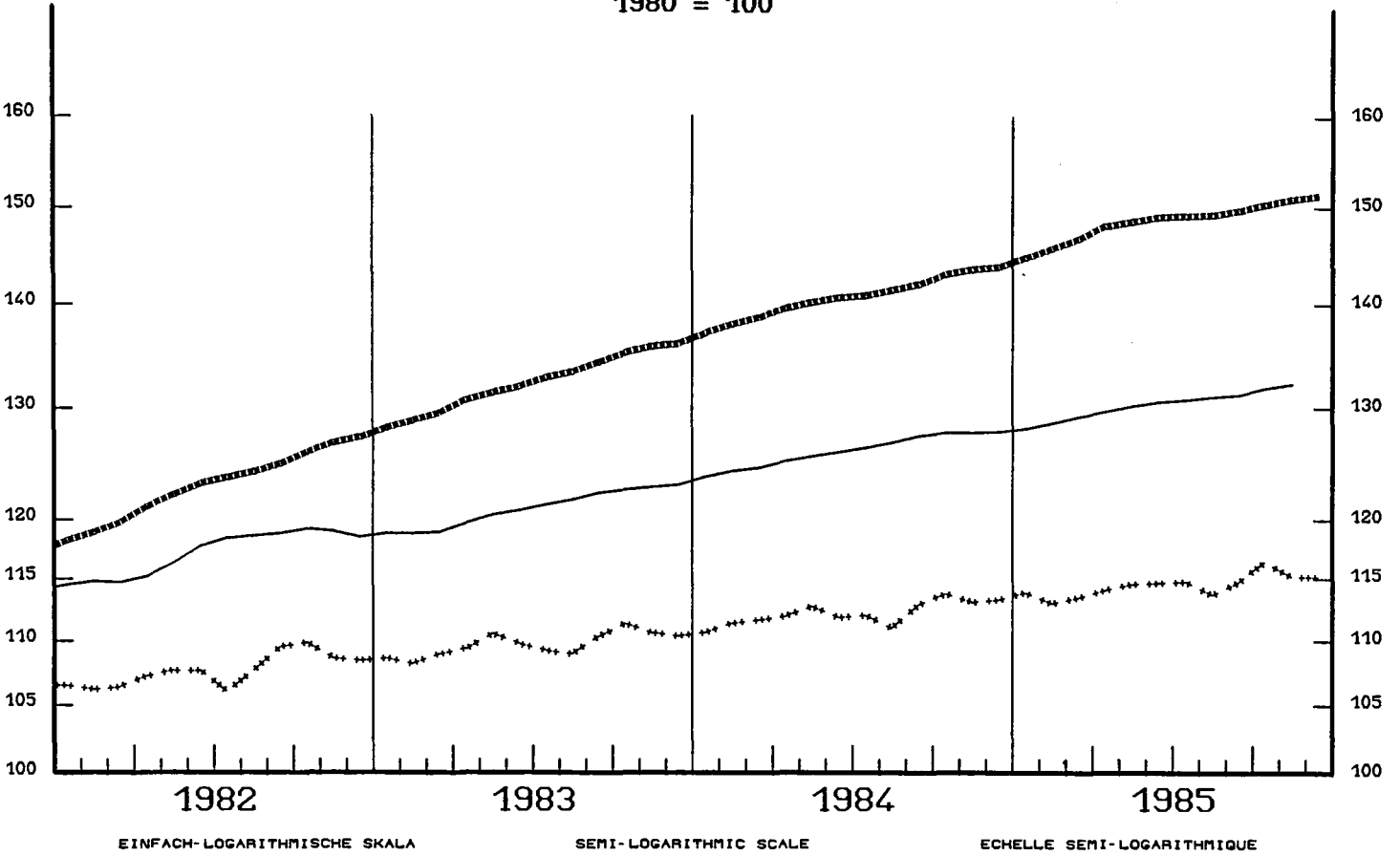
PRIX A LA CONSOMMATION
INDICE GENERAL

— USA

----- EUR 10

+++++ JAPAN

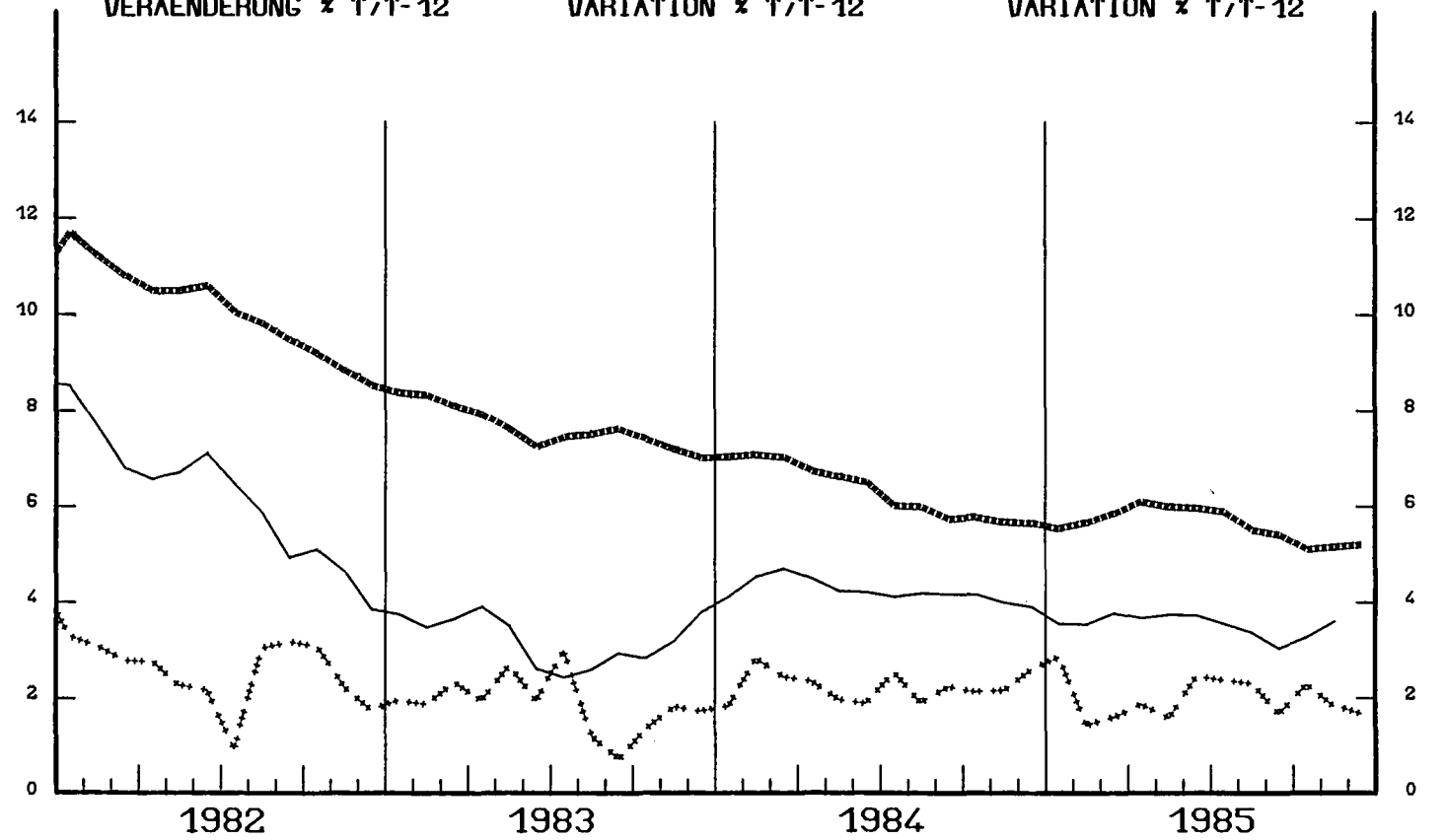
1980 = 100



VERÄNDERUNG $\times T/T-12$

VARIATION $\times T/T-12$

VARIATION $\times T/T-12$



CONSUMER PRICES

B

PRIX A LA CONSOMMATION

GENERAL INDEX

INDICE GENERAL

	SWITZERLAND SUISSE SCHWEIZ	AUSTRIA AUTRICHE OESTERREICH	NORWAY NORVEGE NORGE	SWEDEN SUEDE SVERIGE	FINLAND FINLANDE SUOMI	CANADA CANADA CANADA
	PRICE INDICES		1980 = 100		INDICES DE PRIX	
1981 O	106.5	106.8	113.6	112.1	111.9	112.5
1982 O	112.5	112.6	126.5	121.7	122.6	124.6
1983 O	115.8	116.3	137.2	132.5	132.8	131.8
1984 O	119.2	122.9	145.7	143.2	142.2	137.6
1985 O	123.3P	126.9P	154.0	:	150.5	:
1984 D	120.6	124.3	148.9	148.8	145.2	139.6
1985 J	121.8	125.3	150.0	149.6	146.8	140.2
1985 F	122.8	126.0	150.4	151.0	147.4	141.1
1985 M	123.5	126.6	152.1	152.1	148.8	141.4
1985 A	123.4	126.9	152.8	152.7	149.6	142.0
1985 M	123.3	126.6	153.2	154.5	151.0	142.3
1985 J	123.2	127.0	154.3	153.9	151.4	143.1
1985 J	122.9	127.1	154.8	153.8	151.4	143.5
1985 A	122.9	127.1	154.4	153.8	151.7	143.8
1985 S	123.3	127.2	155.9	154.5	151.9	143.9
1985 O	123.7	127.2	156.3	155.5	152.1	144.4
1985 N	124.5	127.5	156.7	156.5	152.2	145.0
1985 D	124.6	127.8	157.2	:	152.3	:
	RATE OF INCREASE OVER ONE MONTH		(T/T-1)		TAUX DE CROISSANCE SUR UN MOIS	
84 D/M	-0.1	0.1	0.4	1.6	0.1	0.1
85J/84D	1.0	0.8	0.7	0.5	1.1	0.4
85 F/J	0.8	0.5	0.3	0.9	0.4	0.6
85 M/F	0.5	0.5	1.1	0.7	0.9	0.2
85 A/M	-0.1	0.2	0.4	0.4	0.5	0.4
85 M/A	-0.1	-0.3	0.3	1.2	1.0	0.2
85 J/M	-0.1	0.3	0.7	-0.4	0.3	0.6
85 J/J	-0.2	0.1	0.4	-0.1	0.0	0.3
85 A/J	0.0	0.1	-0.3	0.0	0.2	0.2
85 S/A	0.3	0.1	1.0	0.5	0.1	0.1
85 O/S	0.3	0.0	0.2	0.6	0.1	0.4
85 N/O	0.7	0.2	0.3	0.7	0.1	0.4
85 D/N	0.1	0.3	0.3	:	0.1	:
	RATE OF INCREASE OVER 12 MONTHS		(T/T-12)		TAUX DE CROISSANCE SUR 12 MOIS	
84/83 D	2.9	5.0	5.9	8.2	6.1	3.8
85/84 J	3.5	3.4	5.7	7.3	6.4	3.7
85/84 F	4.0	3.4	5.5	8.7	6.4	3.7
85/84 M	3.9	3.6	5.5	7.9	6.7	3.7
85/84 A	3.6	3.8	5.5	7.7	6.6	3.9
85/84 M	3.8	3.8	5.7	8.2	6.4	3.9
85/84 J	3.4	3.2	5.9	8.1	6.4	4.1
85/84 J	3.3	3.5	5.8	7.7	6.0	3.8
85/84 A	2.9	2.6	5.6	6.9	5.8	4.0
85/84 S	3.3	2.9	5.8	6.7	5.3	4.0
85/84 O	3.0	2.7	5.6	6.9	4.9	4.2
85/84 N	3.1	2.6	5.7	6.9	4.9	4.0
85/84 D	3.3	2.8	5.6	:	5.0	:

BON DE COMMANDE

à envoyer à

**OFFICE DES PUBLICATIONS OFFICIELLES
DES COMMUNAUTÉS EUROPÉENNES
L - 2985 LUXEMBOURG**

Veuillez m'envoyer la publication

Titre : Indice des Prix à la Consommation

Paiement à réception de la facture

Nom :

Adresse : Rue N°
 Ville Code postal
 Pays

Date :

Signature :

ORDER FORM

to be sent to

**OFFICE FOR OFFICIAL PUBLICATIONS OF THE
EUROPEAN COMMUNITIES
L - 2985 LUXEMBOURG**

Please send me the publication

Title : Consumer Price Index

Payment on receipt of the invoice

Name :

Address : Street..... N°
 Town Postal code
 Country

Date :

Signature :

