

Theme 3
Population and social conditions
Series B
Short-term statistics

STAT 1130
ISSN 0252-9920

Unemployment

11 □ 1996 Monthly

5 November 1996

UNEMPLOYMENT IN THE EUROPEAN UNION

September 1996

Eurostat estimates that the seasonally-adjusted unemployment rate in the European Union for the month of September 1996 was 10.8%, representing the same level as in the three previous months and an increase of 0.1% by comparison with September 1995.

In most Member States the unemployment rate has remained fairly constant over the last three months; but it has continued to rise in France and to fall in the United Kingdom, Portugal and Finland.

The five Member States where the unemployment rate is above the EU average are France, Ireland, Italy (in all these three it is between 12 and 13%), Finland (about 15%) and Spain (over 20%).

OFICINA ESTADÍSTICA DE LAS COMUNIDADES EUROPEAS
 DE EUROPÆISKE FÆLLESSKABERS STATISTISKE KONTOR
 STATISTISCHES AMT DER EUROPÄISCHEN GEMEINSCHAFTEN
 ΣΤΑΤΙΣΤΙΚΗ ΥΠΗΡΕΣΙΑ ΤΩΝ ΕΥΡΩΠΑΪΚΩΝ ΚΟΙΝΟΤΗΤΩΝ
 STATISTICAL OFFICE OF THE EUROPEAN COMMUNITIES
 OFFICE STATISTIQUE DES COMMUNAUTÉS EUROPÉENNES
 ISTITUTO STATISTICO DELLE COMUNITÀ EUROPEE
 BUREAU VOOR DE STATISTIEK DER EUROPESE GEMEENSCHAPPEN
 SERVIÇO DE ESTATÍSTICA DAS COMUNIDADES EUROPEIAS

L-2920 Luxembourg — Tél. 43 01-1 — Télex COMEUR LU 3423
 B-1049 Bruxelles, rue de la Loi 200 — Tél. 299 11 11

This report has been produced by the *Population, migration, employment and unemployment* unit at Eurostat. The data presented are in line with the definitions and recommendations of the International Labour Office (*Current International Recommendations on Labour Statistics*, 1988 edition, ILO Geneva). The figures have been estimated by Eurostat on the basis of the European Labour Force Survey and are presented for individual Member States of the European Union in order to facilitate international comparisons.

These figures may therefore differ from those generally used in the Member States, which usually reflect national legislation and administrative procedures, and which for this reason are less comparable between Member States.

For further information : A. Persenaire tel. Lux.4301-32005
 R. Brandenbourger tel. Lux.4301-33272

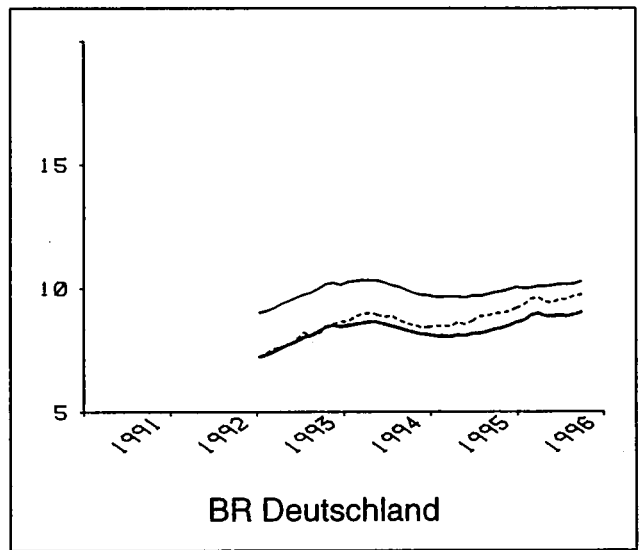
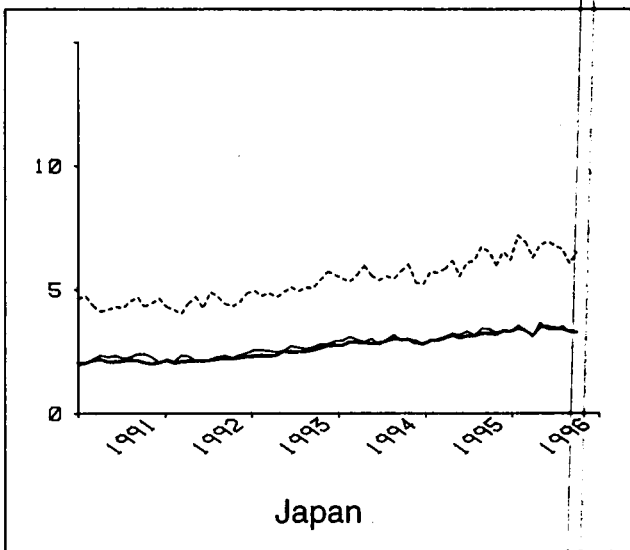
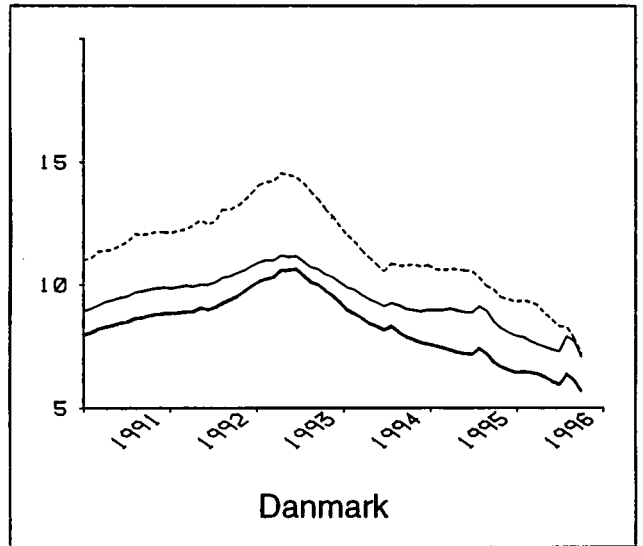
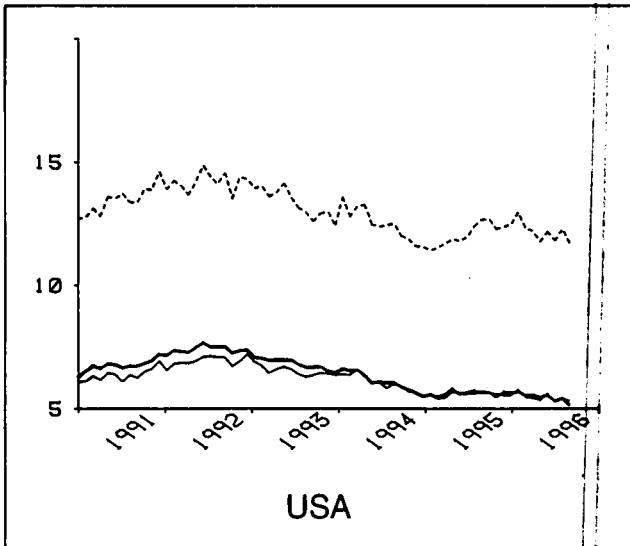
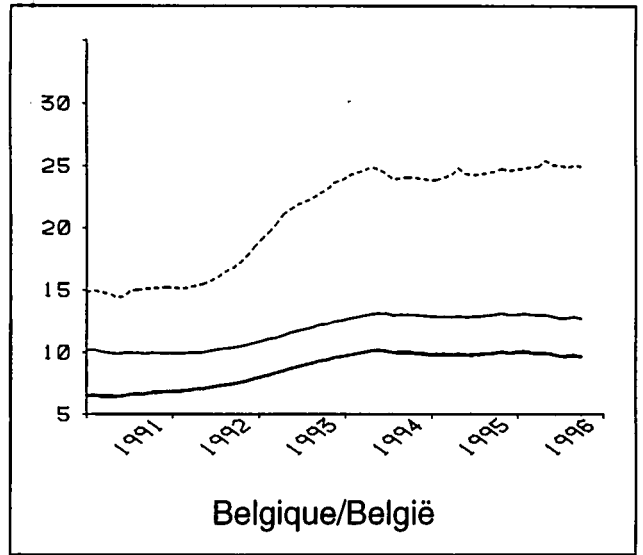
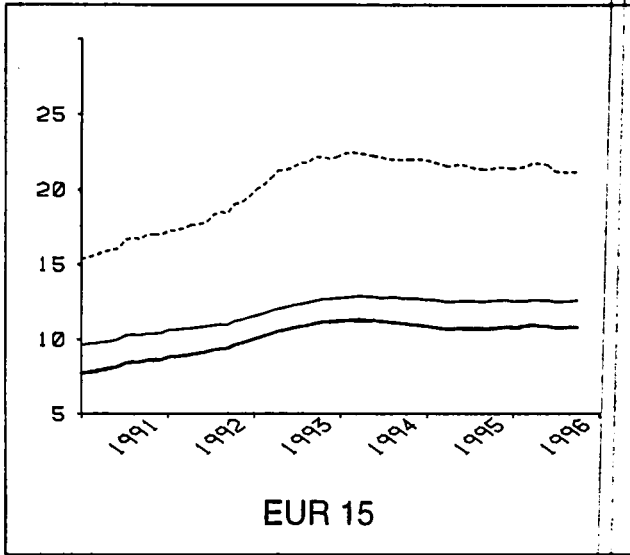
Table of contents :

Unemployment rates, seasonally-adjusted :	
- graphs.....	3-5
- tables	6-7
Unemployment rates, not seasonally-adjusted.....	8-9
Unemployment rates, annual averages.....	10-11
Number of unemployed, annual averages.....	12
Methodological notes.....	13-14

Signs and abbreviations :

Eur-15	All Member States of the European Union
T	Total
F	Females
< 25	Persons aged under 25
:	Data not available

Unemployment rates, seasonally adjusted (%)



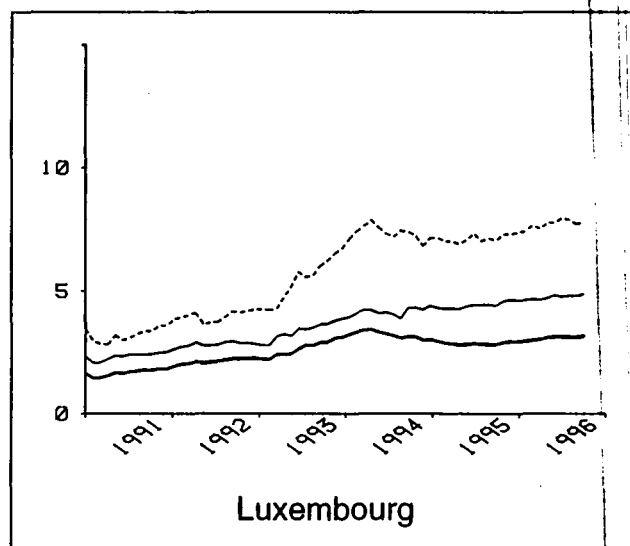
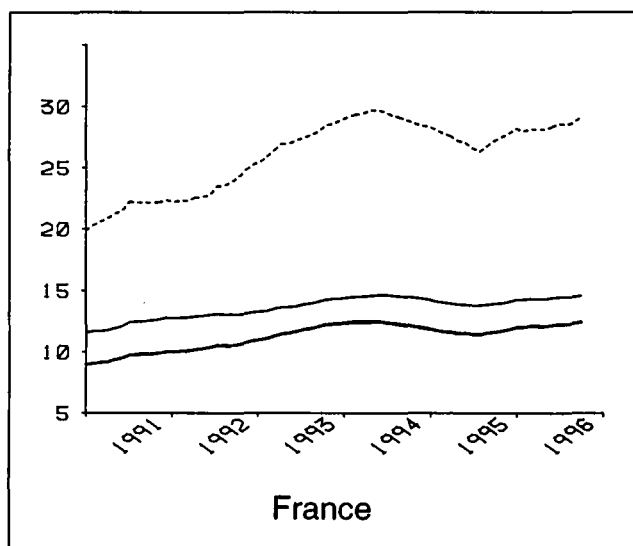
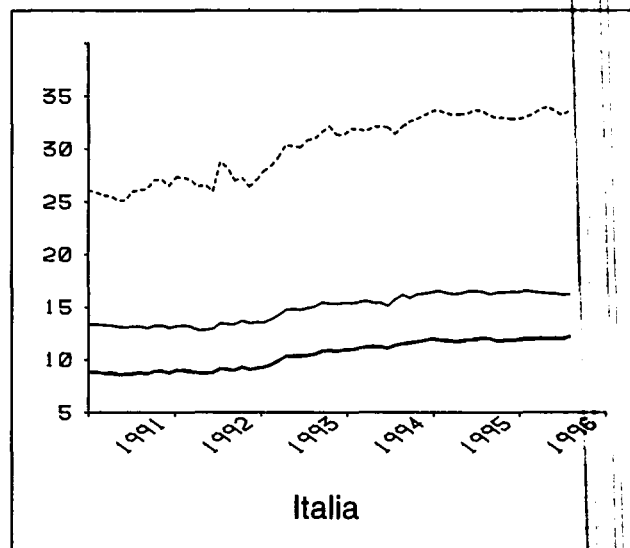
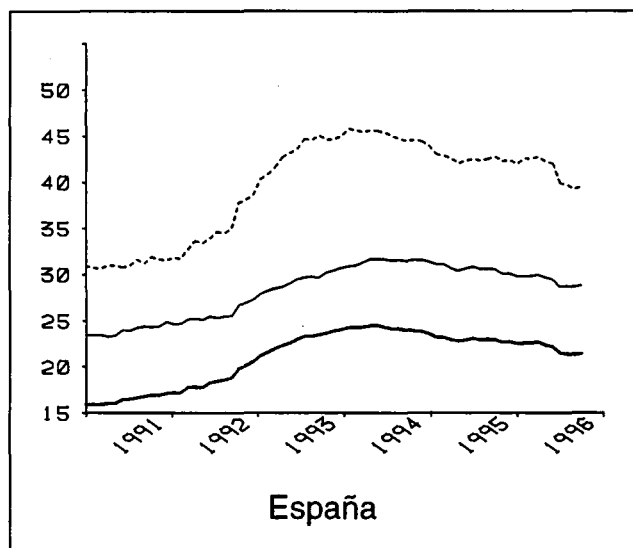
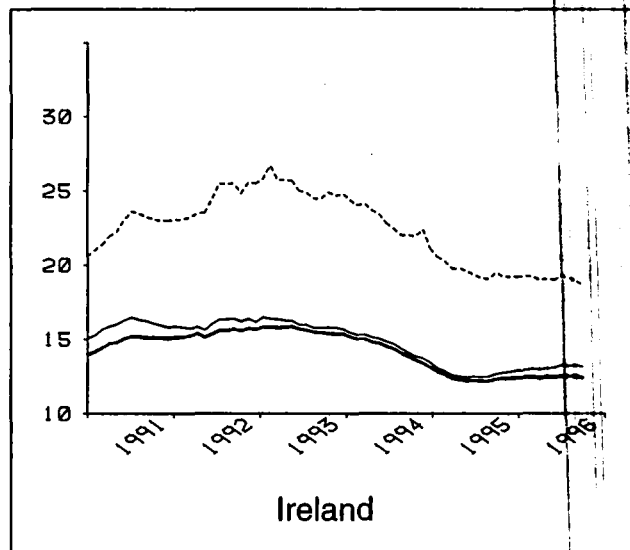
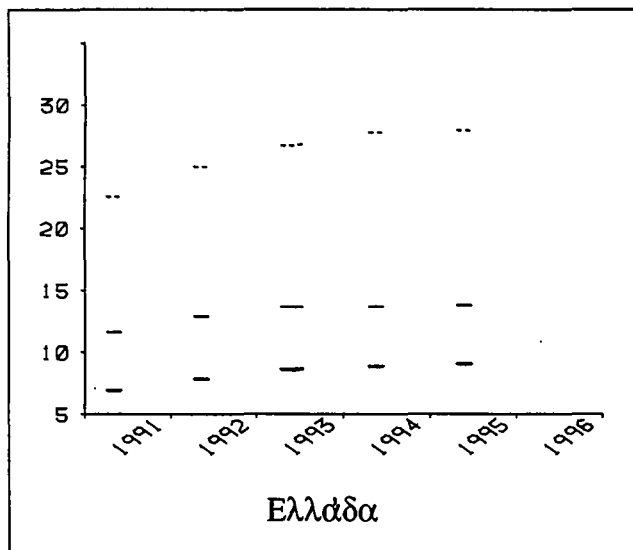
— Total

- - - Under 25 years

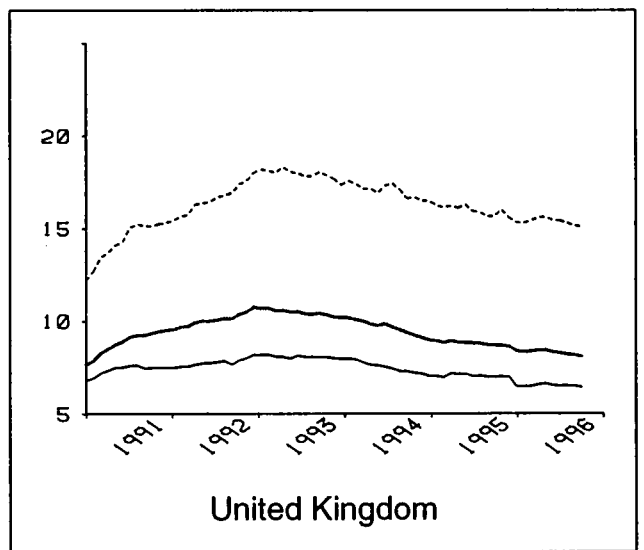
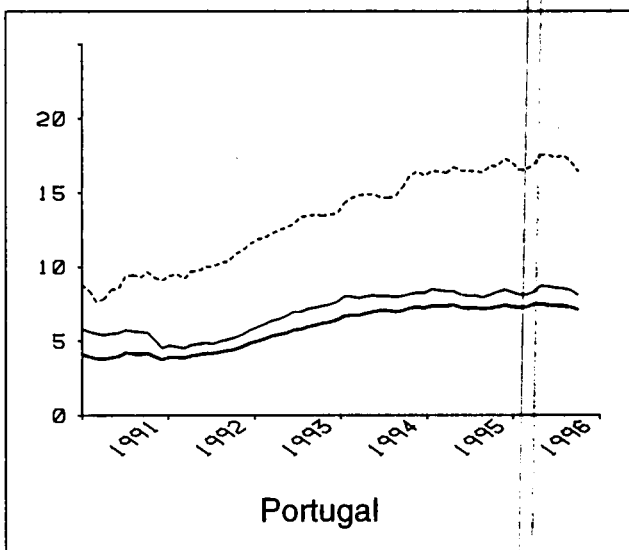
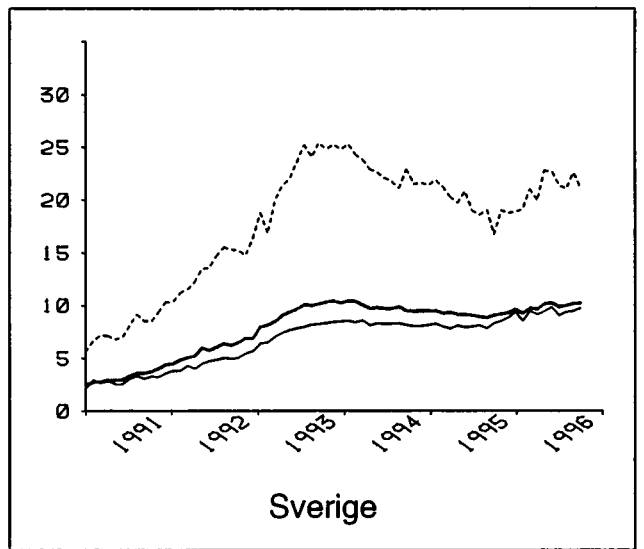
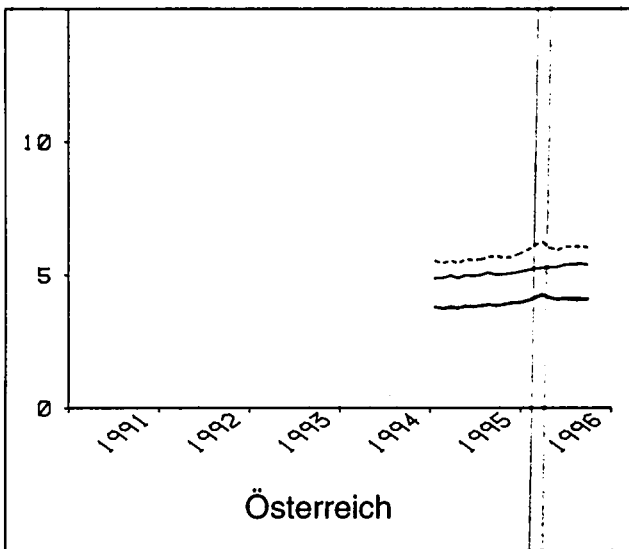
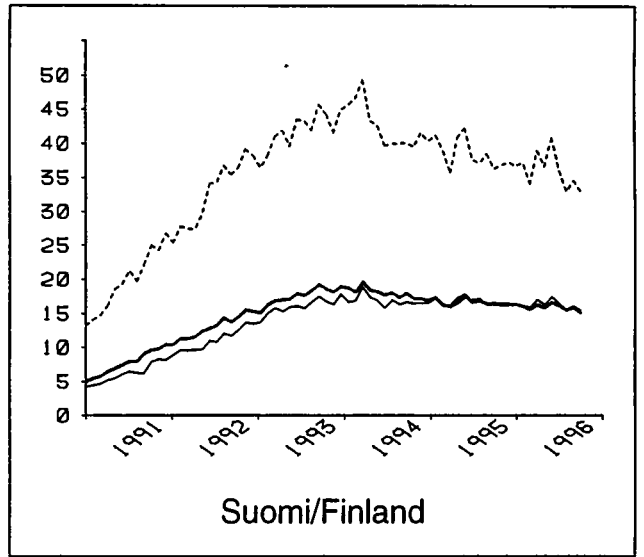
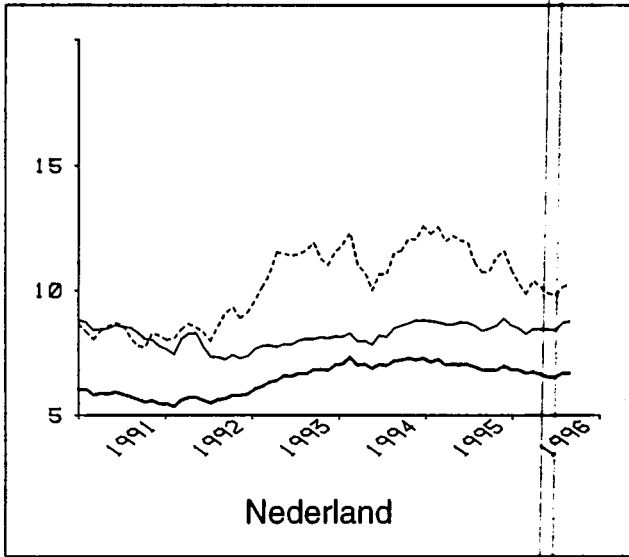
— Females



Unemployment rates, seasonally adjusted (%)



Unemployment rates, seasonally adjusted (%)



— Total

- - - Under 25 years

— Females



9 Unemployment rates, seasonally adjusted

(%)



	EUR 15	Belgique/ België	Danmark	Deutschland	Ελλάδα	España	France	Ireland	Italia	Luxembourg	Nederland	Österreich	Portugal	Suomi/ Finland	Sverige	United Kingdom	USA	Japan
Total																		
Males and females																		
1994.09	11.1	10.0	7.9	8.3	:	24.0	12.2	13.8	11.6	3.1	7.2	:	7.0	17.9	9.5	9.4	5.9	3.0
1995.09	10.7	10.0	6.8	8.3	:	23.0	11.6	12.3	11.8	2.8	6.8	3.9	7.2	16.4	9.1	8.7	5.7	3.2
1996.05	10.9	9.8	6.1	8.9	:	22.2	12.2	12.4	12.0	3.1	6.5	4.1	7.4	16.6	10.2	8.3	5.5	3.5
1996.06	10.8	9.7	5.9	8.9	:	21.5	12.3	12.5	12.0	3.1	6.5	4.1	7.4	16.2	9.9	8.3	5.3	3.5
1996.07	10.8	9.7	6.4	8.9	:	21.4	12.3	12.5	12.2	3.1	6.7	4.1	7.4	15.5	10.0	8.2	5.4	3.4
1996.08	10.8	9.8	6.1	8.9	:	21.3	12.4	12.5	:	3.1	6.7	4.1	7.3	15.9	10.2	8.2	5.2	3.3
1996.09	10.8	9.7	5.7	9.0	:	21.4	12.5	12.4	:	3.2	:	4.1	7.1	15.1	10.2	8.1	:	3.3
Males																		
1994.09	9.9	7.9	6.9	7.1	:	19.4	10.3	13.7	9.1	2.5	6.3	:	6.2	19.1	10.7	11.0	5.8	3.0
1995.09	9.4	7.8	5.5	7.2	:	18.2	9.7	12.1	9.0	1.9	5.7	2.9	6.5	16.4	9.8	10.0	5.7	3.1
1996.05	9.6	7.7	5.0	8.0	:	17.6	10.4	12.1	9.5	2.2	5.2	3.2	6.4	15.9	10.6	9.7	5.5	3.6
1996.06	9.5	7.6	4.9	7.9	:	16.9	10.4	12.1	9.5	2.2	5.2	3.1	6.4	15.9	10.6	9.7	5.3	3.5
1996.07	9.5	7.6	5.1	7.9	:	16.8	10.4	12.1	9.8	2.2	5.3	3.1	6.4	15.4	10.5	9.5	5.4	3.3
1996.08	9.6	7.6	4.8	8.0	:	16.7	10.6	12.0	:	2.2	5.2	3.1	6.4	15.6	10.8	9.5	5.0	3.4
1996.09	9.5	7.6	4.5	8.1	:	16.8	10.7	12.0	:	2.2	:	3.1	6.3	14.7	10.6	9.4	:	3.3
Females																		
1994.09	12.7	13.0	9.0	9.9	:	31.5	14.5	14.1	15.8	4.3	8.6	:	8.0	16.6	8.1	7.3	5.9	2.9
1995.09	12.5	13.0	8.5	9.8	:	30.6	13.9	12.6	16.4	4.4	8.5	5.0	8.1	16.5	8.3	7.0	5.6	3.4
1996.05	12.6	12.8	7.4	10.1	:	29.5	14.4	13.1	16.3	4.8	8.4	5.3	8.7	17.4	9.8	6.5	5.6	3.4
1996.06	12.5	12.7	7.3	10.2	:	28.7	14.5	13.2	16.1	4.8	8.4	5.4	8.6	16.4	9.0	6.5	5.3	3.4
1996.07	12.5	12.7	7.9	10.2	:	28.7	14.5	13.2	16.2	4.8	8.7	5.4	8.5	15.5	9.4	6.5	5.4	3.5
1996.08	12.5	12.8	7.7	10.2	:	28.6	14.5	13.2	:	4.8	8.8	5.4	8.4	16.1	9.4	6.5	5.3	3.3
1996.09	12.6	12.7	7.0	10.3	:	28.8	14.6	13.1	:	4.9	:	5.4	8.1	15.4	9.7	6.4	:	3.3
Under 25 years																		
Males and females																		
1994.09	22.0	24.1	10.8	8.6	:	44.4	28.8	22.0	32.6	7.4	11.6	:	15.4	40.1	22.9	16.6	12.0	5.7
1995.09	21.4	24.5	9.8	9.0	:	42.8	27.2	19.5	32.9	7.1	10.7	5.7	16.8	36.3	16.7	15.7	12.7	6.5
1996.05	21.6	25.0	8.6	9.4	:	42.0	28.3	18.9	33.6	7.8	9.9	5.9	17.5	40.8	22.7	15.4	12.2	6.9
1996.06	21.2	25.0	8.3	9.6	:	39.9	28.6	19.2	33.2	7.9	9.8	6.1	17.4	36.1	21.4	15.4	11.8	6.8
1996.07	21.1	24.8	8.3	9.6	:	39.7	28.5	19.1	33.6	7.9	10.1	6.1	17.5	32.9	21.0	15.3	12.3	6.6
1996.08	21.2	25.0	7.8	9.7	:	39.3	28.7	18.9	:	7.7	10.2	6.1	17.1	34.6	22.6	15.1	11.7	6.0
1996.09	21.2	24.9	7.2	9.7	:	39.5	29.2	18.6	:	7.8	:	6.0	16.4	32.9	21.0	15.1	:	6.5

Unemployment rates, seasonally adjusted

(%)



	EUR 15	Belgique/ België	Danmark	Deutschland	Ελλάδα	España	France	Ireland	Italia	Luxembourg	Nederland	Österreich	Portugal	Suomi/ Finland	Sverige	United Kingdom	USA	Japan
Under 25 years																		
Males																		
1994.09	21.1	22.2	10.0	8.6	:	39.8	25.6	23.7	29.4	7.6	11.1	:	14.2	40.2	25.9	19.5	12.6	6.2
1995.09	20.0	22.4	7.7	9.1	:	37.5	23.6	20.9	28.8	6.4	10.5	4.4	15.1	33.8	17.7	17.8	12.9	6.5
1996.05	20.5	23.1	7.0	10.1	:	36.6	25.2	20.0	29.5	7.1	8.8	4.7	14.9	39.6	23.5	18.1	12.8	7.2
1996.06	20.0	23.1	6.7	10.1	:	34.6	25.4	20.2	29.1	7.6	8.4	4.7	14.6	35.8	21.7	18.1	12.4	7.0
1996.07	19.9	22.8	6.6	10.1	:	34.2	25.4	20.2	29.4	7.5	8.5	4.6	14.7	34.2	20.5	17.8	13.3	6.8
1996.08	20.0	23.0	6.2	10.3	:	33.7	25.8	19.9	:	7.5	8.5	4.6	14.3	33.4	23.6	17.7	12.0	6.3
1996.09	19.9	22.8	5.7	10.4	:	33.7	26.2	19.5	:	7.6	:	4.6	13.7	33.0	21.6	17.7	:	6.7
Females																		
1994.09	22.9	26.2	11.6	8.6	:	50.1	32.2	19.9	36.6	7.1	12.0	:	16.8	40.0	19.6	13.1	11.3	5.2
1995.09	22.9	27.0	12.1	8.8	:	49.1	30.9	17.7	38.0	7.8	11.0	7.1	18.9	39.1	15.8	13.2	12.5	6.5
1996.05	22.9	27.2	10.3	8.6	:	48.5	31.6	17.6	38.7	8.5	10.9	7.2	20.9	42.1	21.9	12.2	11.5	6.6
1996.06	22.6	27.3	10.1	8.9	:	46.4	31.9	18.0	38.4	8.3	11.2	7.5	20.8	36.4	21.0	12.3	11.1	6.6
1996.07	22.6	27.2	10.1	8.9	:	46.4	31.7	17.8	38.9	8.3	11.7	7.6	21.2	31.5	21.6	12.2	11.1	6.4
1996.08	22.6	27.4	9.6	9.0	:	46.1	31.7	17.7	:	7.9	12.0	7.7	20.8	35.7	21.4	12.1	11.4	5.8
1996.09	22.6	27.3	8.9	9.1	:	46.5	32.3	17.4	:	8.0	:	7.6	20.1	32.8	20.4	12.0	:	6.3
25 years and over																		
Males																		
1994.09	8.2	6.2	6.2	6.9	:	15.7	8.5	11.6	6.1	1.9	5.4	:	4.8	16.3	8.6	9.3	4.5	2.6
1995.09	7.9	6.2	5.0	7.0	:	14.7	8.2	10.3	6.2	1.5	4.8	2.7	5.0	13.9	8.7	8.5	4.3	2.7
1996.05	8.0	6.0	4.6	7.7	:	14.3	8.8	10.4	6.7	1.6	4.6	2.9	4.9	12.4	9.0	8.1	4.1	3.1
1996.06	8.0	5.9	4.5	7.7	:	13.9	8.8	10.5	6.8	1.6	4.7	2.8	4.9	13.0	9.2	8.1	4.0	3.1
1996.07	8.0	5.9	4.8	7.7	:	13.8	8.8	10.5	7.0	1.6	4.7	2.8	4.9	12.8	9.2	8.0	4.0	2.9
1996.08	8.1	5.9	4.6	7.7	:	13.9	8.9	10.5	:	1.6	4.7	2.8	5.0	13.3	9.1	7.9	3.8	3.0
1996.09	8.0	5.9	4.3	7.8	:	13.9	9.0	10.4	:	1.6	:	2.8	5.0	12.5	9.2	7.8	:	2.9
Females																		
1994.09	10.8	11.1	8.4	10.1	:	26.5	12.1	12.2	11.5	3.7	7.7	:	6.4	13.2	6.5	6.0	4.8	2.5
1995.09	10.7	11.1	7.6	10.0	:	25.7	11.8	11.1	12.0	3.8	7.8	4.6	6.3	13.4	7.1	5.7	4.3	2.8
1996.05	10.8	10.8	6.7	10.3	:	24.8	12.3	11.7	11.9	4.1	7.8	4.9	6.7	13.8	8.3	5.4	4.5	2.8
1996.06	10.7	10.7	6.6	10.4	:	24.5	12.3	11.8	11.8	4.1	7.7	4.9	6.6	13.7	7.4	5.3	4.2	2.8
1996.07	10.7	10.7	7.4	10.3	:	24.6	12.3	11.8	11.8	4.1	7.9	4.9	6.5	13.5	7.8	5.3	4.3	3.0
1996.08	10.8	10.8	7.3	10.4	:	24.6	12.4	11.9	:	4.2	7.9	4.9	6.5	13.4	7.9	5.4	4.2	2.8
1996.09	10.8	10.6	6.6	10.5	:	24.7	12.4	11.9	:	4.3	:	4.9	6.2	13.1	8.3	5.3	:	2.7

∞ Unemployment rates, not seasonally adjusted

(%)



	EUR 15	Belgique/ België	Danmark	Deutschland	Ελλάδα	España	France	Ireland	Italia	Luxembourg	Nederland	Österreich	Portugal	Suomi/ Finland	Sverige	United Kingdom	USA	Japan
Total Males and females																		
1994.09	11.0	10.4	7.7	8.0	:	23.7	12.4	13.7	11.7	3.2	7.2	:	7.0	17.0	9.4	9.5	5.6	3.0
1995.09	10.7	10.4	6.7	8.0	:	22.7	11.8	12.2	11.9	2.9	6.8	3.4	7.2	15.8	8.9	8.9	5.4	3.2
1996.05	10.6	9.2	5.8	8.7	:	21.8	11.7	12.1	11.9	2.9	6.3	3.8	7.2	16.2	9.6	8.1	5.4	3.5
1996.06	10.5	9.1	5.6	8.6	:	21.5	11.6	12.5	11.6	2.8	6.2	3.4	7.2	16.6	10.2	8.2	5.5	3.3
1996.07	10.6	9.9	6.0	8.8	:	21.0	11.7	12.7	11.8	2.8	6.6	3.4	7.1	15.4	10.0	8.4	5.6	3.2
1996.08	10.7	10.3	6.2	8.8	:	20.8	12.2	12.7	:	2.8	6.7	3.5	7.1	15.2	10.4	8.5	5.1	3.3
1996.09	10.8	10.1	5.5	8.7	:	21.2	12.6	12.3	:	3.2	:	3.6	7.0	14.4	10.0	8.2	:	3.3
Males																		
1994.09	9.7	8.2	6.5	6.6	:	19.1	10.3	13.5	9.1	2.5	6.1	:	6.1	18.0	10.4	10.9	5.3	3.0
1995.09	9.2	8.1	5.1	6.8	:	18.0	9.7	12.0	9.1	1.9	5.5	2.3	6.4	15.5	9.4	10.0	5.1	3.1
1996.05	9.4	7.2	4.8	7.7	:	17.3	9.9	11.8	9.3	2.0	5.0	2.6	6.3	15.5	10.1	9.5	5.4	3.6
1996.06	9.3	7.0	4.5	7.6	:	16.9	9.7	12.0	9.1	1.9	5.0	2.4	6.3	15.4	10.7	9.7	5.3	3.4
1996.07	9.3	7.7	4.6	7.7	:	16.4	9.8	12.1	9.5	1.9	5.1	2.3	6.3	14.4	10.3	9.7	5.4	3.2
1996.08	9.4	8.0	4.7	7.7	:	16.3	10.2	12.0	:	2.0	5.2	2.3	6.2	14.5	10.8	9.7	4.6	3.4
1996.09	9.3	7.9	4.2	7.6	:	16.5	10.7	11.8	:	2.2	:	2.3	6.2	13.7	10.0	9.3	:	3.3
Females																		
1994.09	12.8	13.6	9.1	9.8	:	31.3	14.9	14.0	15.9	4.4	8.8	:	8.1	16.0	8.3	7.7	6.0	3.0
1995.09	12.7	13.6	8.5	9.7	:	30.4	14.3	12.6	16.5	4.5	8.7	4.8	8.1	16.1	8.5	7.4	5.8	3.5
1996.05	12.2	12.1	7.1	9.9	:	29.0	13.8	12.6	16.1	4.5	8.1	5.2	8.4	17.0	9.0	6.2	5.4	3.5
1996.06	12.2	12.0	7.0	9.9	:	28.9	13.8	13.3	15.8	4.4	8.0	4.8	8.3	17.9	9.7	6.2	5.7	3.2
1996.07	12.4	13.1	7.7	10.3	:	28.4	14.1	13.6	15.5	4.4	8.6	4.9	8.1	16.6	9.6	6.7	5.9	3.3
1996.08	12.5	13.5	8.0	10.3	:	28.0	14.5	13.7	:	4.4	8.8	5.1	8.1	15.8	9.9	7.0	5.7	3.2
1996.09	12.7	13.2	7.1	10.1	:	28.7	15.0	13.1	:	4.9	:	5.1	8.1	15.1	10.0	6.9	:	3.3
Under 25 years Males and females																		
1994.09	22.4	26.7	10.8	8.5	:	44.4	31.1	22.0	32.7	7.9	11.8	:	15.1	40.6	23.1	16.9	11.8	5.7
1995.09	21.8	27.1	9.8	8.9	:	42.8	29.3	19.5	33.1	7.7	10.9	5.3	16.5	37.7	17.2	16.0	12.6	6.6
1996.05	20.6	21.4	8.0	8.7	:	40.9	25.3	18.2	33.3	6.7	9.1	5.4	17.0	40.1	21.6	14.6	12.6	7.1
1996.06	20.8	21.2	7.4	9.0	:	40.5	25.3	19.2	33.0	6.6	9.2	4.8	16.8	34.6	21.4	16.1	13.0	6.6
1996.07	20.9	26.0	7.7	9.9	:	39.3	26.3	19.4	32.8	6.7	10.3	4.9	16.4	28.3	17.2	16.8	12.6	6.5
1996.08	21.4	27.7	8.0	10.1	:	38.8	28.2	19.3	:	6.7	10.7	5.3	16.2	31.6	22.0	17.1	10.7	6.0
1996.09	21.7	27.5	7.2	9.6	:	40.0	31.4	18.6	:	8.2	:	5.6	16.1	33.4	20.8	15.3	:	6.6

Unemployment rates, not seasonally adjusted

(%)



	EUR 15	Belgique/ België	Danmark	Deutschland	Ελλάδα	España	France	Ireland	Italia	Luxembourg	Nederland	Österreich	Portugal	Suomi/ Finland	Sverige	United Kingdom	USA	Japan
Under 25 years																		
Males																		
1994.09	21.2	24.6	9.7	8.2	:	39.6	27.1	23.6	29.4	7.9	10.7	:	13.7	41.6	25.3	19.4	11.8	6.0
1995.09	20.2	24.8	7.4	8.7	:	37.5	25.0	20.8	28.9	6.7	10.1	3.6	14.6	35.4	17.0	17.7	12.0	6.6
1996.05	19.6	19.7	6.6	9.5	:	35.7	22.4	19.3	29.4	6.4	8.5	3.9	14.6	39.8	22.6	17.5	13.2	7.0
1996.06	19.7	19.2	6.0	9.5	:	35.0	21.9	20.0	29.2	6.1	7.8	3.4	14.4	33.2	21.8	19.1	13.1	7.0
1996.07	19.5	23.7	6.1	10.2	:	33.3	22.7	20.2	28.6	6.2	8.7	3.2	13.8	25.9	16.4	19.2	13.0	6.6
1996.08	20.0	25.3	6.3	10.4	:	33.1	24.7	20.0	:	6.3	8.3	3.4	13.5	29.5	22.9	19.3	10.5	6.4
1996.09	20.1	25.2	5.5	9.9	:	34.2	27.8	19.4	:	7.8	:	3.6	13.3	33.3	20.1	17.7	:	6.8
Females																		
1994.09	23.8	29.2	12.0	8.9	:	50.2	35.1	20.2	36.8	7.9	12.8	:	16.8	39.6	20.7	13.8	11.9	5.3
1995.09	23.8	29.9	12.5	9.1	:	49.2	33.7	17.9	38.3	8.7	11.7	7.2	18.9	40.3	17.4	13.8	13.1	6.6
1996.05	21.7	23.5	9.6	7.8	:	47.2	28.4	16.9	38.2	7.1	9.8	7.1	20.1	40.5	20.5	11.1	11.9	7.2
1996.06	22.1	23.5	9.1	8.5	:	47.2	28.9	18.2	37.9	7.0	10.6	6.3	19.8	36.1	20.8	12.5	12.9	6.2
1996.07	22.6	28.8	9.5	9.6	:	46.4	30.1	18.4	38.0	7.3	12.0	6.7	19.9	30.8	18.1	14.0	12.1	6.3
1996.08	23.1	30.5	10.0	9.7	:	45.7	31.8	18.3	:	7.1	13.1	7.3	19.8	33.9	21.1	14.3	10.9	5.6
1996.09	23.5	30.2	9.2	9.4	:	47.1	35.2	17.6	:	8.6	:	7.7	19.9	33.4	21.5	12.6	:	6.4
25 years and over																		
Males																		
1994.09	7.9	6.3	5.8	6.4	:	15.3	8.3	11.5	6.1	1.8	5.3	:	4.7	15.1	8.4	9.2	4.0	2.6
1995.09	7.6	6.2	4.6	6.5	:	14.4	8.0	10.2	6.2	1.4	4.7	2.0	4.9	12.9	8.3	8.4	3.8	2.6
1996.05	7.9	5.9	4.5	7.5	:	14.1	8.6	10.3	6.5	1.5	4.4	2.4	4.9	11.9	8.7	8.0	3.9	3.1
1996.06	7.7	5.7	4.2	7.3	:	13.8	8.4	10.4	6.3	1.5	4.5	2.2	4.9	11.7	9.0	8.0	3.7	2.9
1996.07	7.8	5.9	4.3	7.4	:	13.5	8.4	10.5	6.8	1.5	4.5	2.1	4.9	12.2	9.2	7.9	3.8	2.8
1996.08	7.8	6.0	4.4	7.4	:	13.5	8.6	10.4	:	1.5	4.7	2.1	4.9	12.5	9.1	7.8	3.5	3.0
1996.09	7.7	5.9	4.0	7.3	:	13.6	8.8	10.3	:	1.6	:	2.1	4.9	11.6	8.8	7.7	:	2.8
Females																		
1994.09	10.7	11.2	8.4	9.9	:	26.1	12.0	12.1	11.5	3.7	7.7	:	6.4	12.9	6.6	6.4	4.9	2.6
1995.09	10.6	11.2	7.6	9.8	:	25.3	11.7	11.0	12.0	3.7	7.9	4.2	6.3	13.1	7.1	6.0	4.4	2.9
1996.05	10.6	10.6	6.5	10.2	:	24.6	12.0	11.4	11.9	4.0	7.6	4.8	6.5	13.7	7.6	5.3	4.1	2.8
1996.06	10.5	10.5	6.5	10.1	:	24.5	12.0	11.8	11.6	3.9	7.3	4.5	6.4	14.0	7.9	5.0	4.2	2.6
1996.07	10.6	10.9	7.3	10.4	:	24.2	12.1	12.2	11.2	3.8	7.7	4.5	6.3	13.9	8.3	5.2	4.6	2.7
1996.08	10.6	11.0	7.5	10.4	:	23.8	12.4	12.3	:	3.9	7.7	4.6	6.3	13.4	8.4	5.4	4.6	2.8
1996.09	10.8	10.8	6.6	10.3	:	24.3	12.4	11.8	:	4.2	:	4.6	6.2	12.8	8.6	5.7	:	2.8

10 Unemployment rates, annual averages

(%)



	EUR 15	Belgique/ België	Danmark	Deutschland	Ελλάδα	España	France	Ireland	Italia	Luxembourg	Nederland	Österreich	Portugal	Suomi/ Finland	Sverige	United Kingdom	USA	Japan
Total Males and females																		
1989	:	7.5	7.4	:	6.7	17.2	9.3	14.7	10.0	1.8	6.9	:	4.9	3.5	1.6	7.3	5.3	2.3
1990	:	6.7	7.7	:	6.4	16.2	8.9	13.4	9.1	1.7	6.2	:	4.6	3.5	1.8	7.0	5.5	2.1
1991	8.2	6.6	8.4	5.6	7.0	16.4	9.5	14.8	8.8	1.7	5.8	:	4.0	7.6	3.3	8.8	6.7	2.1
1992	9.3	7.3	9.2	6.6	7.9	18.5	10.4	15.4	9.0	2.1	5.6	:	4.2	13.0	5.8	10.1	7.4	2.2
1993	10.7	8.9	10.1	7.9	8.6	22.8	11.7	15.6	10.3	2.7	6.6	:	5.7	17.5	9.5	10.4	6.8	2.5
1994	11.1	10.0	8.2	8.4	8.9	24.1	12.3	14.3	11.4	3.2	7.1	:	7.0	17.9	9.8	9.6	6.1	2.9
1995	10.7	9.9	7.1	8.2	9.1	22.9	11.6	12.4	11.9	2.9	7.0	3.8	7.3	16.6	9.2	8.8	5.6	3.1
Males																		
1989	:	4.7	6.7	:	4.1	12.9	7.0	14.2	7.1	1.3	4.9	:	3.5	3.5	1.6	7.4	5.2	2.2
1990	:	4.1	7.0	:	3.9	11.9	6.7	12.8	6.4	1.2	4.3	:	3.2	3.9	1.8	7.4	5.6	2.0
1991	6.9	4.3	7.5	4.6	4.4	12.3	7.4	14.2	6.2	1.3	4.1	:	2.8	9.0	3.6	9.9	7.0	2.0
1992	8.1	5.3	8.3	5.2	5.0	14.5	8.3	15.1	6.5	1.7	4.3	:	3.6	14.8	6.9	11.9	7.8	2.1
1993	9.7	6.9	9.6	6.6	5.7	19.1	10.0	15.4	7.8	2.2	5.6	:	4.8	19.0	11.1	12.3	7.1	2.4
1994	10.0	7.9	7.3	7.2	6.0	19.7	10.4	14.1	8.9	2.7	6.3	:	6.1	18.9	11.2	11.3	6.2	2.8
1995	9.4	7.8	5.7	7.1	6.2	18.2	9.7	12.2	9.2	2.0	5.8	2.9	6.5	16.7	10.1	10.1	5.6	3.1
Females																		
1989	:	11.9	8.2	:	11.1	25.3	12.3	15.5	15.1	2.7	10.2	:	6.9	3.6	1.7	7.1	5.4	2.3
1990	:	10.6	8.4	:	10.8	24.1	11.8	14.6	13.8	2.5	9.1	:	6.2	3.0	1.8	6.6	5.4	2.2
1991	10.0	10.0	9.5	7.0	11.8	23.9	12.2	15.9	13.2	2.3	8.4	:	5.4	6.1	2.9	7.4	6.3	2.2
1992	10.9	10.2	10.2	8.5	13.0	25.6	13.0	16.0	13.2	2.8	7.6	:	5.0	11.0	4.7	7.8	6.9	2.2
1993	12.2	11.8	10.8	9.6	13.6	29.3	13.8	16.0	14.8	3.4	7.9	:	6.8	16.0	7.7	8.1	6.5	2.6
1994	12.7	12.9	9.3	10.1	13.7	31.4	14.5	14.6	15.7	4.1	8.3	:	8.0	16.7	8.2	7.5	6.0	3.0
1995	12.5	12.9	8.7	9.8	13.8	30.5	14.0	12.6	16.4	4.4	8.6	5.0	8.2	16.6	8.2	7.0	5.6	3.2
Under 25 years Males and females																		
1989	:	16.2	11.2	:	22.5	34.2	20.0	20.3	29.3	4.2	9.8	:	11.1	9.1	3.9	10.4	10.9	4.5
1990	:	15.3	11.4	:	21.5	32.3	19.3	19.4	27.4	3.8	8.6	:	10.0	9.4	4.5	10.8	11.1	4.3
1991	16.3	14.9	11.6	5.9	22.9	31.1	21.5	22.4	26.0	3.2	8.3	:	8.8	19.5	7.8	14.3	13.4	4.4
1992	18.1	16.2	12.7	6.4	25.1	34.6	23.3	24.4	27.1	4.0	8.5	:	10.1	32.6	13.6	16.7	14.2	4.5
1993	21.4	21.8	13.8	7.9	26.8	43.4	27.3	25.2	30.4	5.4	11.1	:	12.9	41.8	22.6	17.9	13.3	5.1
1994	22.1	24.2	11.0	8.7	27.7	45.0	29.0	22.8	32.3	7.3	11.4	:	15.1	42.2	22.6	17.0	12.5	5.5
1995	21.5	24.4	10.1	8.8	27.9	42.5	27.3	19.5	33.2	7.1	11.6	5.6	16.6	38.2	19.4	15.9	12.1	6.1

Unemployment rates, annual averages

(%)



	EUR 15	Belgique/ België	Danmark	Deutschland	Ελλάδα	España	France	Ireland	Italia	Luxembourg	Nederland	Österreich	Portugal	Suomi/ Finland	Sverige	United Kingdom	USA	Japan
Under 25 years																		
Males																		
1989	:	11.8	10.7	:	15.4	27.6	16.3	21.8	24.7	3.5	8.2	:	9.0	8.3	3.9	11.2	11.4	4.8
1990	:	11.0	11.3	:	14.4	26.2	15.8	20.4	23.3	3.2	7.5	:	8.4	10.2	4.6	11.9	11.6	4.5
1991	15.1	11.9	11.1	5.4	16.0	25.7	18.1	23.7	22.6	3.3	7.4	:	6.8	21.6	8.5	16.6	14.3	4.7
1992	17.3	14.3	12.2	5.8	17.4	29.9	20.1	25.8	23.4	4.2	8.5	:	9.1	34.6	15.9	19.7	15.3	4.7
1993	20.9	20.7	13.4	7.8	18.9	40.0	25.1	27.0	26.6	5.2	12.0	:	10.8	42.9	26.0	21.0	14.3	4.9
1994	21.4	22.6	10.6	8.8	19.7	40.9	26.2	24.7	29.0	7.5	12.2	:	13.5	42.9	25.3	19.7	13.2	5.7
1995	20.1	22.3	8.1	8.8	19.4	36.9	23.7	20.8	29.0	6.4	10.7	4.4	15.1	36.7	20.6	18.1	12.5	6.2
Females																		
1989	:	21.2	11.6	:	30.9	42.3	23.9	18.6	34.8	5.0	11.4	:	13.6	10.1	3.8	9.4	10.4	4.3
1990	:	19.9	11.5	:	29.9	39.7	23.0	18.2	32.4	4.6	9.6	:	11.9	8.4	4.5	9.6	10.6	4.1
1991	17.6	18.0	12.2	6.3	31.3	37.9	25.0	20.9	30.3	3.1	9.1	:	11.1	17.2	7.1	11.6	12.4	4.2
1992	19.2	18.2	13.3	7.0	34.3	40.6	26.8	22.8	31.7	3.7	8.6	:	11.2	30.5	11.1	13.0	13.0	4.2
1993	22.0	23.0	14.1	8.1	36.1	47.6	29.7	23.0	35.1	5.6	10.1	:	15.3	40.7	19.0	14.2	12.2	5.2
1994	23.0	26.0	11.6	8.6	37.0	50.1	32.0	20.6	36.4	7.2	10.7	:	17.0	41.5	19.8	13.7	11.6	5.4
1995	23.2	26.8	12.4	8.6	37.7	49.0	31.1	17.9	38.5	7.9	12.4	6.9	18.6	39.9	18.1	13.3	11.6	6.0
25 years and over																		
Males																		
1989	:	3.8	5.7	:	2.6	9.8	5.6	12.5	4.0	1.0	4.2	:	2.2	2.6	1.2	6.5	3.9	1.9
1990	:	3.3	6.1	:	2.6	9.0	5.4	11.1	3.7	1.0	3.7	:	2.1	2.8	1.3	6.3	4.4	1.7
1991	5.5	3.5	6.7	4.5	2.9	9.6	6.0	12.1	3.4	1.0	3.4	:	2.0	6.9	2.7	8.4	5.7	1.7
1992	6.5	4.2	7.5	5.1	3.4	11.4	6.8	12.8	3.8	1.4	3.5	:	2.6	11.7	5.5	10.1	6.4	1.8
1993	7.9	5.3	8.8	6.4	4.0	15.0	8.2	12.9	4.9	1.9	4.5	:	3.7	15.3	9.0	10.5	5.8	2.1
1994	8.2	6.2	6.6	7.0	4.4	15.8	8.6	11.9	5.9	2.1	5.3	:	4.8	15.5	9.3	9.6	4.8	2.5
1995	7.9	6.1	5.2	6.9	4.6	14.8	8.2	10.4	6.3	1.5	5.0	2.7	5.0	13.8	8.7	8.6	4.3	2.7
Females																		
1989	:	10.1	7.3	:	7.1	19.1	10.1	14.1	9.7	2.1	9.8	:	5.1	2.4	1.2	6.3	4.2	2.0
1990	:	8.9	7.7	:	6.8	18.7	9.8	13.1	9.0	2.0	8.9	:	4.8	2.0	1.3	5.8	4.3	1.8
1991	8.3	8.6	8.8	7.1	7.8	19.3	10.0	13.9	8.8	2.1	8.1	:	4.2	4.2	2.1	6.3	5.1	1.8
1992	9.2	8.9	9.5	8.8	8.8	21.1	10.8	13.6	8.8	2.6	7.3	:	3.6	7.8	3.6	6.5	5.7	1.9
1993	10.3	10.0	10.0	9.9	9.3	24.1	11.5	13.6	10.3	2.9	7.3	:	5.2	12.1	6.0	6.6	5.4	2.2
1994	10.8	11.0	8.8	10.3	9.4	26.3	12.1	12.6	11.5	3.5	7.7	:	6.3	13.2	6.6	6.1	4.9	2.5
1995	10.6	11.0	7.8	9.9	9.6	25.7	11.7	11.1	11.9	3.7	7.7	4.6	6.5	13.4	6.8	5.7	4.4	2.7

Number of unemployed, annual averages

1000



	EUR 15	Belgique/ België	Danmark	Deutschland	Ελλάδα	España	France	Ireland	Italia	Luxembourg	Nederland	Österreich	Portugal	Suomi/ Finland	Sverige	United Kingdom	USA	Japan	
Total																			
Males and females																			
1989	:	290.5	209.9	:	262.3	2544.5	2238.2	189.5	2311.5	2.9	451.4	:	228.1	89.6	73.7	2081.9	6519.8	1418.6	
1990	:	260.6	221.0	:	254.7	2435.5	2152.7	175.7	2123.9	2.7	413.2	:	213.2	88.3	82.7	2022.4	6873.7	1343.3	
1991	13624.5	263.0	242.9	2195.2	276.3	2476.7	2323.3	197.5	2064.3	2.8	395.1	:	190.9	190.2	148.1	2528.4	8426.1	1359.2	
1992	15337.7	295.4	265.8	2580.0	317.5	2810.0	2557.6	209.5	2097.5	3.6	394.4	:	199.3	320.5	260.4	2891.1	9384.3	1422.5	
1993	17784.2	365.5	289.1	3090.3	351.5	3502.6	2908.8	215.1	2345.6	4.5	467.1	:	270.3	428.6	414.9	2979.0	8733.8	1656.7	
1994	18469.9	416.2	228.8	3299.3	369.5	3727.4	3049.9	202.2	2570.8	5.4	516.3	:	332.6	435.3	426.2	2744.0	7996.5	1920.8	
1995	17864.4	416.2	198.2	3209.0	380.1	3574.0	2907.7	177.7	2683.0	4.8	508.3	146.7	346.5	407.7	404.4	2499.9	7404.3	2099.2	
Males																			
1989	:	111.3	102.9	:	102.1	1250.5	943.4	122.7	1045.7	1.4	194.9	:	91.6	46.0	37.6	1214.3	3517.1	828.3	
1990	:	97.8	108.7	:	98.7	1162.0	907.5	111.3	954.7	1.3	176.2	:	85.7	52.2	43.2	1206.4	3799.0	773.3	
1991	6737.5	104.0	115.7	1031.2	110.7	1197.3	1004.1	124.4	934.2	1.4	168.3	:	75.4	117.4	84.8	1615.6	4817.3	771.7	
1992	7789.2	126.6	127.9	1163.0	126.9	1402.7	1132.6	131.8	964.6	1.8	179.7	:	95.0	190.2	160.7	1927.6	5379.7	820.0	
1993	9308.8	166.4	144.9	1481.7	146.2	1849.1	1364.7	134.1	1116.6	2.4	237.9	:	125.8	241.2	253.9	1976.5	4932.4	947.5	
1994	9575.1	193.6	109.7	1609.2	157.0	1900.9	1416.6	125.2	1260.4	2.8	267.9	:	160.7	239.2	254.7	1813.3	4367.7	1123.3	
1995	9053.0	191.4	87.6	1575.4	161.6	1750.7	1321.6	109.2	1302.9	2.1	248.1	63.3	170.5	212.1	231.2	1625.3	3983.0	1230.0	
Females																			
1989	:	179.2	107.0	:	160.2	1293.9	1294.8	66.7	1265.8	1.5	256.4	:	136.5	43.6	36.1	867.7	3002.8	590.3	
1990	:	162.8	112.3	:	156.0	1273.5	1245.2	64.4	1169.2	1.4	237.1	:	127.5	36.1	39.6	816.0	3074.7	570.0	
1991	6887.0	159.0	127.2	1164.1	165.6	1279.3	1319.1	73.1	1130.1	1.4	226.8	:	115.5	72.8	63.3	912.8	3608.8	587.5	
1992	7548.5	168.8	137.9	1417.0	190.5	1407.4	1425.0	77.8	1132.9	1.7	214.6	:	104.3	130.2	99.7	963.5	4004.7	602.5	
1993	8475.4	199.1	144.1	1608.6	205.3	1653.4	1544.1	81.0	1228.9	2.1	229.2	:	144.5	187.4	161.0	1002.5	3801.3	709.2	
1994	8894.9	222.6	119.0	1690.1	212.5	1826.5	1633.3	77.0	1310.4	2.6	248.4	:	171.9	196.1	171.5	930.6	3628.8	797.5	
1995	8811.4	224.8	110.6	1633.6	218.5	1823.3	1586.1	68.4	1380.1	2.7	260.2	83.4	176.1	195.6	173.3	874.6	3421.3	869.2	
Under 25 years																			
Males and females																			
1989	:	83.4	64.0	:	119.2	1053.4	688.8	60.2	1156.4	1.1	128.5	:	101.8	35.4	28.9	639.1	2411.0	365.8	
1990	:	75.7	63.1	:	115.5	976.4	642.2	57.0	1046.0	0.9	113.8	:	90.7	35.3	33.1	637.3	2369.6	361.7	
1991	4436.7	73.4	63.1	349.4	121.5	921.0	678.8	66.0	1018.5	0.8	109.3	:	73.8	69.9	53.8	799.6	2766.6	385.8	
1992	4728.9	78.7	65.5	353.5	132.5	999.9	709.1	69.3	1003.8	1.0	113.0	:	80.2	110.8	84.2	892.2	2898.8	399.2	
1993	5318.5	102.5	68.5	414.5	142.4	1231.5	797.2	70.9	1035.3	1.2	143.9	:	97.7	137.9	125.2	911.4	2717.0	455.0	
1994	5259.0	114.1	54.5	427.9	143.2	1244.0	798.4	63.9	1042.6	1.6	144.5	:	112.5	129.6	120.6	826.9	2692.6	499.2	
1995	4958.5	111.5	51.9	403.6	141.6	1148.6	721.0	53.7	1057.4	1.4	144.1	34.0	116.3	115.0	102.3	756.0	2590.3	539.2	

Methodological notes

1. The Eurostat unemployment rates are calculated according to the recommendations of the 13th International Conference of Labour Statisticians organised by the International Labour Office (ILO) in 1982. Unemployed persons are those persons aged 15 years and over who
 - are without work
 - are available to start work within the next two weeks
 - and have actively sought employment at some time during the previous four weeks.
2. The unemployment estimates are based on the results of the European Community Labour Force Survey. It is carried out in the spring of each year. The use of the same definitions and concepts throughout the EU ensures comparability of the results between Member States.
3. The **unemployment rate** is the number of unemployed as a percentage of the labour force (people living in collective households are excluded). The labour force is the total of the employed and the unemployed. Monthly estimates of the **number of unemployed** are derived by interpolating/extrapolating each year's Community Labour Force Survey results using the results of the national labour force surveys (see table A) and monthly indicators of unemployment (see table B). Monthly estimates of **employment** are obtained by
 - interpolating/extrapolating linearly the annual Community LFS results (Belgium, Denmark, Germany, Greece, France, Ireland, Luxembourg, Netherlands)
 - interpolating/extrapolating linearly the results of the national quarterly labour force surveys after adjustment to the Community LFS (Spain, Italy, Portugal, United Kingdom)
 - using the results of the national monthly labour force surveys (Finland, Sweden, USA, Japan).
4. Estimates are made separately for males under 25, females under 25, males aged 25 years and over, and females aged 25 years and over. Totals are obtained by adding up these four basic categories.
5. The figures for the four basic categories are seasonally adjusted using the multiplicative version of the X-11 method of the US Bureau of the Census. The reliability of the figures is adversely affected if deseasonalisation is performed on short series (such as Germany since the reunification) or where breaks occur (such as Sweden since 1993).
6. From 1992, in some member States, the more restrictive application of the ILO guidelines introduces a break in the series. In such cases, no estimates are provided for the period before 1992.

Table A: Reference period of the last surveys used

Country	Community labour force surveys	National labour force surveys
Belgium	1995Q2	-
Denmark	1995Q2	-
Germany	1995Q2	-
Greece	1995Q2	-
Spain	1995Q2	1996Q2
France	1996Q2	-
Ireland	1995Q2	-
Italy	1995Q2	1996Q3
Luxembourg	1995Q2	-
Netherlands	1995Q2	-
Austria	1995Q2	1995Q1
Portugal	1995Q2	1996Q3
Finland	-	1996SEP
Sweden	-	1996SEP
United Kingdom	1995Q2	1996Q3

NB: 1994Q2 = 2nd quarter of 1994

Table B: Monthly indicators of unemployment.

BELGIUM: All persons in the following categories registered at employment offices: wholly unemployed persons in receipt of benefit, other unemployed persons compulsory registered and voluntarily registered persons without work.

Series provided by the Office National de l'Emploi.

DENMARK: Persons seeking full-time or part-time employment, whether or not they are members of an unemployment insurance fund.

Series provided by Danmarks Statistik.

GERMANY: Unemployed persons registered at public employment offices and seeking work as employees for at least 18 hours per week.

Series provided by the Bundesanstalt für Arbeit.

GREECE: No monthly indicator

SPAIN: Unemployed persons registered at public employment offices and seeking work as employees for 20 hours or more per week.

Series provided by the Ministerio de Trabajo y Seguridad Social.

FRANCE: Unemployed persons registered at the Agence de l'Emploi and seeking permanent full-time employment (demandeurs de catégorie 1).

Series provided by the Ministère du Travail, de l'Emploi et de la Formation Professionnelle.

IRELAND: Claimants for unemployment benefit, applicants for unemployment assistance and others seeking work who are registered with the employment services of the Department of Social Welfare. Excluded are persons seeking part-time employment.

Series provided by the Central Statistics Office.

ITALY: Persons without work, persons seeking their first job, persons working part-time for less than 20 hours per week and workers on a fixed-term contract of not more than 4 months in any 12-month period, who are looking for a different job.

Series provided by the Ministero del Lavoro e della Previdenza Sociale.

LUXEMBURG: Unemployed persons registered at employment offices and seeking work as employees for at least 20 hours per week.

Series provided by the Administration de l'Emploi.

NETHERLANDS: Persons registered at employment offices, between the ages of 16 and 64 years,

– who are without work or with work less than 12 hours a week and

– who are immediately available for paid employment for at least 12 hours a week or who found a job and will start working for at least 12 hours a week.

Series provided by the CBS.

AUSTRIA: No monthly indicator.

PORTUGAL: Persons registered at employment offices who are available for work within 30 days after registration.

Series provided by the Instituto de Emprego e Formação Profissional.

FINLAND: Number of unemployed in the monthly labour force survey.

SWEDEN: Number of unemployed in the monthly labour force survey.

UNITED KINGDOM: Persons seeking full-time work and claiming unemployment benefit because they work.

Series provided by the Department of Employment.

BELGIQUE/BELGIE

Moniteur belge/Belgisch Staatsblad

Rue de Louvain 40-42/
Leuvenseweg 40-42
B-1000 Bruxelles/Brussel
Tél. (32-2) 552 22 11
Fax (32-2) 511 01 84

Jean De Lannoy

Avenue du Roi 202/
Koningslaan 202
B-1060 Bruxelles/Brussel
Tél. (32-2) 538 51 69
Fax (32-2) 538 08 41
e-mail: jean.de.lannoy@infoboard.be

**Librairie européenne/
Europese Boekhandel**

Rue de la Loi 244/
Wetsstraat 244
B-1040 Bruxelles/Brussel
Tél. (32-2) 295 26 39
Fax (32-2) 735 08 60

DANMARK

J. H. Schultz Information A/S

Herstedvang 10-12
DK-2620 Albertslund
Tlf. (45) 43 63 23 00
Fax (45) 43 63 19 69
e-mail: schultz@schultz.dk

DEUTSCHLAND

Bundesanzeiger Verlag

Breite Straße 78-80
Postfach 10 05 34
D-50667 Köln
Tel. (49-221) 20 29-0
Fax (49-221) 20 29 278

GREECE/ELLADA

G. C. Eleftheroudakis SA

International Bookstore
Panepistimiou 17
GR-105 64 Athens
Tel. (30-1) 331 41 82
Fax (30-1) 323 98 21

ESPAÑA

Mundi Prensa Libros, SA

Castelló, 37
E-28001 Madrid
Tel. (34-1) 431 33 99/431 32 22/435 36 37
Fax (34-1) 575 39 98
e-mail: mundiprensa@tsai.es

Boletín Oficial del Estado

Trafalgar 27-29
E-28010 Madrid
Tel. (34-1) 538 22 95/538 22 97
Fax (34-1) 538 22 67

Sucursal:

Mundi Prensa Barcelona

Consell de Cent, 391
E-08009 Barcelona
Tel. (34-3) 488 34 92
Fax (34-3) 487 76 59

Libreria de la Generalitat de Catalunya

Rambla dels Estudis, 118
Palau Moja
E-08002 Barcelona
Tel. (34-3) 302 68 35/302 64 62
Fax (34-3) 302 12 99

FRANCE

Journal officiel

Service des publications des CE
26, rue Desaix
F-75727 Paris Cedex 15
Tél. (33-1) 40 58 77 01/31
Fax (33-1) 40 58 77 00

IRELAND

Government Supplies Agency

Publications Section
4-5 Harcourt Road
Dublin 2
Tel. (353-1) 661 31 11
Fax (353-1) 475 27 60

ITALIA

Licosa SpA

Via Duca di Calabria 1/1
Casella postale 552
I-50125 Firenze
Tel. (39-55) 64 54 15
Fax (39-55) 64 12 57
e-mail: licosa@fibcc.it

GRAND-DUCHÉ DE LUXEMBOURG

Messageries du livre Sàrl

5, rue Raiffeisen
L-2411 Luxembourg
Tél. (352) 40 10 20
Fax (352) 490 661
e-mail: mdl@pt.lu

Abonnements:

Messageries Paul Kraus

11, rue Christophe Plantin
L-2339 Luxembourg
Tél. (352) 499 88 88
Fax (352) 499 888 444
e-mail: mpk@pt.lu

NEDERLAND

SDU Uitgeverijen

Externe Fondsen
Christoffel Plantijnstraat 2
Postbus 20014
2500 EA 's-Gravenhage
Tel. (31-70) 378 98 80
Fax (31-70) 378 97 83

ÖSTERREICH

**Manz'sche Verlags-
und Universitätsbuchhandlung Gmbh**

Siebenbrunnengasse 21
Postfach 1
A-1050 Wien
Tel. (43-1) 53 161 (334 oder 340)
Fax (43-1) 53 161 (339)
e-mail: auslieferung@manz.co.at

PORTUGAL

Imprensa Nacional-Casa da Moeda, EP

Rua Marquês de Sá da Bandeira, 16 A
P-1050 Lisboa Codex
Tel. (351-1) 495 03 99
Fax (351-1) 353 02 94/384 01 32

Distribuidora de Livros

Bertrand Ld.^a
Grupo Bertrand, SA
Rua das Terras d'cs Vales, 4-A
Apartado 60037
P-2700 Amadora Codex
Tel. (351-1) 495 90 50/495 87 87
Fax (351-1) 496 02 55

SUOMI/FINLAND

**Akateeminen Kirjakauppa /
Akademiska Bokhandeln**

Pohjoisesplanadi 39/
Norra esplanaden 39
PL/PB 128
FIN-00101 Helsinki/Helsingfors
Tel. (358) 121 41
Fax (358) 121 44 35
e-mail: akatilaus@stockmann.mailnet.fi

SVERIGE

BTJ AB

Traktorvägen 11
PO Box 200
S-221 00 LUND
Tel. (46) 18 00 00
Fax (46) 18 01 25

UNITED KINGDOM

HMSO Books (Agency Section)

HMSO Publications Centre
51, Nine Elms Lane
London SW8 5DR
Tel. (44-171) 873 9090
Fax (44-171) 873 8463

ICELAND

Bokabud Larusar Blöndal

Sklávördustig, 2
IS-101 Reykjavík
Tel. (354) 55 15 650
Fax (354) 55 25 560

NORGE

NIC Info A/S

Bertrand Narvesens vei 2
Boks 6512 Etterstad
N-0606 Oslo
Tel. (47-22) 57 33 34
Fax (47-22) 68 19 01

SCHWEIZ/SUISSE/SVIZZERA

OSEC

Stampfenbachstraße 85
CH-8035 Zürich
Tel. (41-1) 365 54 54
Fax (41-1) 365 54 11
e-mail: urs.leimbacher@ecs.osec.inet.ch

BÄLGARIJA

Europress Klassica Bk Ltd

76, Gurko Street
BG-1463 Sofia
Tel. (359-2) 81 64 73
Fax (359-2) 81 64 73

ČESKÁ REPUBLIKA

NIS ČR - prodejna

Konviktská 5
CZ-113 57 Praha 1
Tel. (42-2) 24 22 94 33/24 23 09 07
Fax (42-2) 24 22 94 33
e-mail: nkposp@dec.nis.cz

HRVATSKA

Mediatrade Ltd

Pavla Hatza 1
HR-4100 Zagreb
Tel. (38-1) 43 03 92
Fax (38-1) 44 40 59

MAGYARORSZÁG

Euro Info Service

Európa Ház
Margitsziget
H-1138 Budapest
Tel. (36-1) 11 16 06/11 16 216
Fax (36-1) 302 50 35

POLSKA

Business Foundation

ul. Krucza 38/42
PL-00-512 Warszawa
Tel. (48-22) 621 99 93/628 28 82
Fax (48-22) 621 97 61- Free line (0-39) 12 00 77

ROMÂNIA

Euromedia

Str. G-ral Berthelot Nr 41
RO-70749 Bucuresti
Tel. (41) 210 44 01/614 06 64
Fax (41) 210 44 01

RUSSIA

CCEC

9,60-letiya Oktyabrya Av.
117312 Moscow
Tel. (095) 135 52 27
Fax (095) 135 52 27

SLOVAKIA

Slovenska Technicka Kniznica

Námestie slobody 19
SLO-81223 Bratislava 1
Tel. (42-7) 53 18 364
Fax (42-7) 53 18 364
e-mail: europ@tbb1.slk.stuba.sk

MALTA

Miller Distributors Ltd

Malta International Airport
PO Box 25
LQA 05 Malta
Tel. (356) 66 44 88
Fax (356) 67 67 99

TÜRKIYE

Dünya Infotel A.S.

Istiklâl Caddesi No 469
TF-80050 Tünel-Istanbul
Tel. (90-212) 251 91 96 / 427 02 10
Fax (90-212) 251 91 97

ISRAEL

R.O.Y. International

17, Shimon Hatarssi Street
PO Box 13056
61130 Tel Aviv
Tel. (972-3) 546 14 23
Fax (972-3) 546 14 42
e-mail: royil@netvision.net.il

Sub-agent for the Palestinian Authority:

Index Information Services

PO Box 19502
Jerusalem
Tel. (972-2) 27 16 34
Fax (972-2) 27 12 19

EGYPT

The Middle East Observer

41, Sherif Street
Cairo
Tel. (20-2) 39 26 919
Fax (20-2) 39 39 732

UNITED STATES OF AMERICA

Unipub

4611-F Assembly Drive
MD20706 Lanham
Tel. (800) 274-4888 (toll free telephone)
Fax (800) 865-3450 (toll free fax)

CANADA

Uniquement abonnements/
Subscriptions only:

Renouf Publishing Co. Ltd

1294 Algoma Road
K1B 3W8 Ottawa, Ontario
Tel. (1-613) 741 73 33
Fax (1-613) 741 54 39
e-mail: renouf@fox.nstn.ca
For monographs see: Unipub

AUSTRALIA

Hunter Publications

PO Box 404
3167 Abbotsford, Victoria
Tel. (3) 9417 53 61
Fax (3) 9419 71 54

JAPAN

PSI-Japan

Kyoku Dome, Tokyo Kojimachi P.O.
Tokyo 102
Tel. (81-3) 3234 69 21
Fax (81-3) 3234 69 15
e-mail: psijapan@gol.com
URL: www.psi-japan.com

SOUTH AND EAST ASIA

Legal Library Services Limited

Orchard
PO Box 0523
912318 Singapore
Tel. (65) 243 24 98
Fax (65) 243 24 79
e-mail: elaine@leg-liby.demon.co.uk

SOUTH AFRICA

Safto

5th Floor Export House,
CNR Maude & West Streets
PO Box 782 706
2146 Sandton
Tel. (27-11) 883 37 37
Fax (27-11) 883 65 69

**ANDERE LÄNDER
OTHER COUNTRIES
AUTRES PAYS**

Bitte wenden Sie sich an ein Büro Ihrer Wahl
Please, address yourself to the sales office of your choice
Veuillez vous adresser au bureau de vente de votre choix

Price (excl. VAT) in Luxembourg: Single copy ECU 7 • Subscription ECU 62



OFICINA DE PUBLICACIONES OFICIALES DE LAS COMUNIDADES EUROPEAS
KONTOR ET FOR DE EUROPÆISKE FÆLLESSKABERS OFFICIELLE PUBLIKATIONER
AMT FÜR AMTLICHE VERÖFFENTLICHUNGEN DER EUROPÄISCHEN GEMEINSCHAFTEN
ΥΠΗΡΕΣΙΑ ΕΠΙΣΗΜΩΝ ΕΚΔΟΣΕΩΝ ΤΩΝ ΕΥΡΩΠΑΪΚΩΝ ΚΟΙΝΟΤΗΤΩΝ
OFFICE FOR OFFICIAL PUBLICATIONS OF THE EUROPEAN COMMUNITIES
OFFICE DES PUBLICATIONS OFFICIELLES DES COMMUNAUTÉS EUROPÉENNES
UFFICIO DELLE PUBBLICAZIONI UFFICIALI DELLE COMUNITÀ EUROPEE
BUREAU VOOR OFFICIËLE PUBLIKATIES DER EUROPESE GEMEENSCHAPPEN
SERVIÇO DAS PUBLICAÇÕES OFICIAIS DAS COMUNIDADES EUROPEIAS

L - 2985 Luxembourg

Catalogue number: CA-BH-96-011-EN-C