

1995 □ 8

ISSN 1024-4328

Electricity prices for EU industry on 1 January 1995: relative stability

These comments are based on prices expressed in purchasing power standard (PPS). Tables and graphics also give the prices in ECU, which allows comparison in both units.

A study of the variations in VAT-excluded prices from 1 July 1994 to 1 January 1995 reveals that:

- In Belgium the rise in prices was spread out between 2.6% (I_a^*) and 4.1% (I_i); in Luxembourg the rise was between 0.4% (I_c) and 0.1% (I_i).
- In Italy the biggest rises affected I_a (7.6%) and I_i (5.1%) whereas prices for I_h decreased (-0.9%).
- In the Netherlands the only consumers recording a price drop were I_c (-1.1%) and I_e (-2.9%) in Rotterdam. The prices for the other consumers increased commensurately with the quantities consumed. In the "Nord Holland" area, the variation was between 1.5% (I_a) and 7.9% (I_i).
- The most noticeable rises were recorded in the United Kingdom. They mainly affected prices for I_h (+18.6%) and I_i (+26%) in London, as well as those for I_g (+19.9%) in Birmingham. Paradoxically, the greatest falls are also recorded in this country, for example -11.5% for I_c prices in London and -9.5% for I_e prices in Birmingham. Prices for Glasgow and Leeds remained unchanged.
- In Spain there was a 3% rise for I_a and I_b and a 1.8% drop for the prices for all the other consumers whereas in Denmark, prices of I_g (0.5%), I_h (1.4%) and I_i (2.4%) increased while those for the other consumers decreased between -0.4% (I_c) and -2.1% (I_a and I_b).
- In Portugal drops of between -5% (I_a) and -5.9% (I_i) were recorded in Lisbon.
- In Germany, France, Greece and Ireland prices remained stable.

* see table below for standard consumers definition.

Manuscript completed on = 26.04.1995


For further information please contact:
Eurostat, L-2920 Luxembourg, tel. 4301-32040 Fax: 4301-34771

Price (excl. VAT) in Luxembourg: Subscription ECU 240,
single copy ECU 6

Catalogue number: CA-NL-95-008-EN-C

Council Directive No 90/377/EEC of 29 June 1990 lays down a Community procedure to improve the transparency of gas and electricity prices charged to industrial end-users. In accordance with Article 1.1, this note sets out the prices for standard consumers and the "marker prices" in force as at 1 January 1995.

Nine standard industrial users, coded I_a to I_i were chosen:

 Standard consumer	Annual consumption (kWh)	Maximum demand (kW)	Annual utilisation (in hours)
I _a	30 000	30	1 000
I _b	50 000	50	1 000
I _c	160 000	100	1 600
I _d	1 250 000	500	2 500
I _e	2 000 000	500	4 000
I _f	10 000 000	2 500	4 000
I _g	24 000 000	4 000	6 000
I _h	50 000 000	10 000	5 000
I _i	70 000 000	10 000	7 000

Prices for the standard consumers are given in national currencies, PPS (purchasing power standard as at 29 March for 1995) and in ECU (average value for January 1995).

B	DK	D	GR	E	F	IRL	I	L	NL	P	UK
BFR	DKR	DM	DR	PTA	FF	IRL	LIT	LFR	HFL	ESC	UKL
1 PPS =											
40.27	9.42	2.28	231.60	130.37	7.05	0.71	1693.38	43.11	2.29	133.25	0.69
1 ECU =											
39.16	7.49	1.90	295.70	164.52	6.57	0.80	1999.01	39.16	2.13	196.12	0.79

MARKER PRICE
(01.01.1995)

National currencies

The marker price is a reference price for a particular consumption category. These prices are usually tied to particular conditions of supply set out in a large body of contractual clauses, which do not permit a simple and direct comparison of these prices among the different Member States.

		1	2	3
<u>Belgium</u>	BFR/kWh			
	25 MW	2.19	1.82	1.82
	50 MW	2.06	1.71	1.71
	75 MW	2.04	1.69	1.69
<u>Federal Republic of Germany</u> (North/Central)				
- lowest	PF/kWh			
	25 MW	15.0	13.1	12.0
	50 MW	13.6	11.8	10.8
	75 MW	13.3	11.6	10.6
	- highest			
	25 MW	17.7	15.4	14.2
	50 MW	17.4	15.2	13.9
	75 MW	17.0	14.8	13.6
(West) - lowest				
	25 MW	14.5	12.6	12.0
	50 MW	13.8	12.0	11.0
	75 MW	13.3	11.6	10.6

- highest	25 MW	17.1	14.9	13.7
	50 MW	16.8	14.6	13.4
	75 MW	16.5	14.4	13.2
(South) - lowest	25 MW	14.1	12.3	11.4
	50 MW	13.1	11.4	10.6
	75 MW	12.7	11.0	10.2
- highest	25 MW	17.0	14.8	13.5
	50 MW	16.6	14.4	13.4
	75 MW	16.3	14.1	13.1
(Osten) - lowest	25 MW	14.6	12.7	12.7
	50 MW	14.2	12.3	12.3
	75 MW	13.8	12.0	12.0
- highest	25 MW	20.5	17.8	16.7
	50 MW	20.1	17.5	16.4
	75 MW	19.8	17.2	16.2
<u>Greece</u>	DRA/kWh			
	25 MW	13.12	11.12	11.12
	50 MW	13.12	11.12	11.12
	75 MW	13.12	11.12	11.12
<u>Spain</u>	PTA/kWh			
	25 MW	6.10	5.26	5.26
	50 MW	6.10	5.26	5.26
	75 MW	6.10	5.26	5.26
<u>France</u>	CENT/kWh			
	25 MW	37.55	31.66	31.66
	50 MW	34.90	29.43	29.43
	75 MW	33.79	28.49	28.49
<u>Italy</u>	LIT/kWh			
	25 MW	102.15	93.72	76.20
	50 MW	99.68	91.45	74.07
	75 MW	98.86	90.70	73.36
<u>Netherlands</u>	CENTS/kWh			
- lowest	25 MW	11.16	9.50	9.50
	50 MW	10.81	9.20	9.20
	75 MW	9.99	8.50	8.50
- highest	25 MW	11.99	10.21	10.21
	50 MW	11.51	9.80	9.80
	75 MW	11.51	9.80	9.80
<u>Portugal</u>	ESC/kWh			
	25 MW	11.10	10.57	10.57
	50 MW	11.46	10.92	10.92
<u>United Kingdom</u>	P/kWh			
	25 MW	4.369	3.718	3.718
	50 MW	4.123	3.509	3.509
	75 MW	3.773	3.211	3.211

(Denmark, Luxembourg, Ireland: confidential marker prices, less than three consumers in the category).


1 : with taxes

2 : VAT excluded

3 : taxes excluded




PRIX DE L'ELECTRICITE POUR USAGES INDUSTRIELS


1 JANUAR 1995 1 JANUARY 1995 1 JANVIER 1995	NATIONALE WAHRUNG / KWH NATIONAL CURRENCY / KWH MONNAIE NATIONALE/ KWH			KKS PPS SPA / 100 KWH			ECUS/ 100 KWH			
VERBRAUCHER-TYPEN	STEURN INBEGR.	OHNE MWST.	OHNE STEUERN	STEURN INBEGR.	OHNE MWST.	OHNE STEUERN	STEURN INBEGR.	OHNE MWST.	OHNE STEUERN	
STANDARD CONSUMERS	WITH TAXES	VAT EXCL.	TAXES EXCL.	WITH TAXES	VAT EXCL.	TAXES EXCL.	WITH TAXES	VAT EXCL.	TAXES EXCL.	
CONSUMMATEURS TYPE	TAXES COMPRISES	HORS TVA	HORS TAXES	TAXES COMPRISES	HORS TVA	HORS TAXES	TAXES COMPRISES	HORS TVA	HORS TAXES	
BELGIQUE (BFR)				NATIONAL						
IA	7.00	5.81	5.81	17.38	14.43	14.43	17.87	14.84	14.84	
IB	6.93	5.75	5.75	17.21	14.28	14.28	17.70	14.68	14.68	
IC	5.74	4.76	4.76	14.25	11.82	11.82	14.66	12.15	12.15	
ID	4.33	3.59	3.59	10.75	8.91	8.91	11.06	9.17	9.17	
IE	3.66	3.04	3.04	9.09	7.55	7.55	9.35	7.76	7.76	
IF	3.47	2.88	2.88	8.62	7.15	7.15	8.86	7.35	7.35	
IG	2.84	2.36	2.36	7.05	5.86	5.86	7.25	6.03	6.03	
IH	2.52	2.09	2.09	6.26	5.19	5.19	6.43	5.34	5.34	
II	2.16	1.79	1.79	5.36	4.44	4.44	5.52	4.57	4.57	
DANMARK (DKR) (1)				NATIONAL						
IA	61.45	41.56	36.56	6.52	4.41	3.88	8.20	5.55	4.88	
IB	60.71	40.97	35.97	6.44	4.35	3.82	8.11	5.47	4.80	
IC	59.45	39.96	34.96	6.31	4.24	3.71	7.94	5.33	4.67	
ID	56.55	37.64	32.64	6.00	3.99	3.46	7.55	5.03	4.36	
IE	56.25	37.40	32.40	5.97	3.97	3.44	7.51	4.99	4.33	
IF	55.36	36.69	31.69	5.87	3.89	3.36	7.39	4.90	4.23	
IG	53.61	35.29	30.29	5.69	3.74	3.21	7.16	4.71	4.04	
IH	52.78	34.62	29.62	5.60	3.67	3.14	7.05	4.62	3.95	
II	52.09	34.07	29.07	5.53	3.61	3.08	6.95	4.55	3.88	
DEUTSCHLAND (PF)				DUESSELDORF						
IA	63.18	54.94	50.36	27.66	24.05	22.05	33.23	28.90	26.49	
IB	37.89	32.94	30.20	16.59	14.42	13.22	19.93	17.33	15.88	
IC	33.64	29.25	26.81	14.73	12.81	11.74	17.69	15.38	14.10	
ID	26.90	23.39	21.44	11.78	10.24	9.39	14.15	12.30	11.28	
IE	23.78	20.67	18.95	10.41	9.05	8.30	12.51	10.87	9.97	
IF	22.08	19.20	17.60	9.67	8.41	7.71	11.61	10.10	9.26	
IG	17.59	15.30	14.02	7.70	6.70	6.14	9.25	8.05	7.37	
IH	19.26	16.75	15.35	8.43	7.33	6.72	10.13	8.81	8.07	
II	16.01	13.92	12.76	7.01	6.09	5.59	8.42	7.32	6.71	
				HAMBURG						
IA	44.55	38.74	35.48	19.51	16.96	15.53	23.43	20.38	18.66	
IB	44.55	38.74	35.48	19.51	16.96	15.53	23.43	20.38	18.66	
IC	37.92	32.98	30.20	16.60	14.44	13.22	19.94	17.35	15.88	
ID	30.43	26.46	24.23	13.32	11.58	10.61	16.01	13.92	12.74	
IE	24.40	21.21	19.43	10.68	9.29	8.51	12.83	11.16	10.22	
IF	24.40	21.21	19.43	10.68	9.29	8.51	12.83	11.16	10.22	
IG	20.44	17.77	16.27	8.95	7.78	7.12	10.75	9.35	8.56	
IH	22.03	19.16	17.55	9.65	8.39	7.68	11.59	10.08	9.23	
II	19.11	16.62	15.22	8.37	7.28	6.66	10.05	8.74	8.01	
				HANNOVER						
IA	42.17	36.67	33.64	18.46	16.06	14.73	22.18	19.29	17.69	
IB	41.56	36.14	33.16	18.20	15.82	14.52	21.86	19.01	17.44	
IC	32.61	28.36	26.02	14.28	12.42	11.39	17.15	14.92	13.69	
ID	27.06	23.53	21.59	11.85	10.30	9.45	14.23	12.38	11.36	
IE	22.86	19.88	18.24	10.01	8.70	7.99	12.02	10.46	9.59	
IF	22.64	19.69	18.06	9.91	8.62	7.91	11.91	10.36	9.50	
IG	19.02	16.54	15.17	8.33	7.24	6.64	10.00	8.70	7.98	
IH	19.91	17.31	15.88	8.72	7.58	6.95	10.47	9.10	8.35	
II	17.65	15.35	14.08	7.73	6.72	6.16	9.28	8.07	7.41	

(1) DIE PREISE OHNE MWST. UMFASSEN NICHT DIE ABZIEHBAREN ENERGISTEUERN VON 5 ORE AUF DEM CO2 UND VON 33 ORE AUF DER ENERGIE/
THE PRICES EXCLUDING VAT DOES NOT INCLUDE THE DEDUCTIBLE TAXES OF 5 ORE FOR THE CO2 AND OF 33 ORE FOR THE ENERGY TAX/
LES PRIX HTVA NE COMPRENNENT PAS LES TAXES DEDUCTIBLES DE 5 ORE SUR LE CO2 ET DE 33 ORE SUR L'ENERGIE


PRIX DE L'ELECTRICITE POUR USAGES INDUSTRIELS

1 JANUAR 1995 1 JANUARY 1995 1 JANVIER 1995	NATIONALE WAEHRUNG / KWH NATIONAL CURRENCY / KWH MONNAIE NATIONALE/ KWH			KKS	PPS	SPA / 100 KWH	ECUS/ 100 KWH			
VERBRAUCHER-TYPEN STANDARD CONSUMERS CONSOMMATEURS TYPE	STEUERN INBEGR. WITH TAXES TAXES COMPRISES	OHNE MWST. VAT EXCL. HORS TVA	OHNE STEUERN TAXES EXCL. HORS TAXES	STEUERN INBEGR. WITH TAXES TAXES COMPRISES	OHNE MWST. VAT EXCL. HORS TVA	OHNE STEUERN TAXES EXCL. HORS TAXES	STEUERN INBEGR. WITH TAXES TAXES COMPRISES	OHNE MWST. VAT EXCL. HORS TVA	OHNE STEUERN TAXES EXCL. HORS TAXES	
DEUTSCHLAND (PF)										
IA	34.73	30.20	27.68	15.21	13.22	12.12	18.27	15.88	14.56	
IB	34.73	30.20	27.68	15.21	13.22	12.12	18.27	15.88	14.56	
IC	30.57	26.58	24.36	13.38	11.64	10.67	16.08	13.98	12.81	
ID	25.24	21.95	20.12	11.05	9.61	8.81	13.28	11.55	10.58	
IE	22.30	19.39	17.77	9.76	8.49	7.78	11.73	10.20	9.35	
IF	20.42	17.75	16.27	8.94	7.77	7.12	10.74	9.34	8.56	
IG	15.80	13.74	12.59	6.92	6.02	5.51	8.31	7.23	6.62	
IH	17.14	14.91	13.66	7.50	6.53	5.98	9.02	7.84	7.18	
II	14.09	12.25	11.23	6.17	5.36	4.92	7.41	6.44	5.91	
WESTLICHES GEBIET										
IA	52.19	45.38	41.98	22.85	19.87	18.38	27.45	23.87	22.08	
IB	51.83	45.07	41.69	22.69	19.73	18.25	27.26	23.71	21.93	
IC	35.19	30.60	28.31	15.41	13.40	12.39	18.51	16.09	14.89	
ID	27.35	23.78	22.00	11.97	10.41	9.63	14.39	12.51	11.57	
IE	22.36	19.45	17.99	9.79	8.52	7.88	11.76	10.23	9.46	
IF	21.36	18.57	17.18	9.35	8.13	7.52	11.23	9.77	9.04	
IG	18.41	16.01	14.81	8.06	7.01	6.48	9.68	8.42	7.79	
IH	19.39	16.86	15.60	8.49	7.38	6.83	10.20	8.87	8.21	
II	17.42	15.14	14.01	7.63	6.63	6.13	9.16	7.96	7.37	
FRANKFURT/M										
IA	46.20	40.17	37.26	20.23	17.59	16.31	24.30	21.13	19.60	
IB	45.02	39.15	36.32	19.71	17.14	15.90	23.68	20.59	19.10	
IC	34.68	30.16	27.98	15.18	13.20	12.25	18.24	15.86	14.72	
ID	27.93	24.29	22.53	12.23	10.63	9.86	14.69	12.78	11.85	
IE	23.07	20.06	18.61	10.10	8.78	8.15	12.13	10.55	9.79	
IF	22.07	19.19	17.80	9.66	8.40	7.79	11.61	10.09	9.36	
IG	18.37	15.97	14.81	8.04	6.99	6.48	9.66	8.40	7.79	
IH	19.02	16.54	15.34	8.33	7.24	6.72	10.00	8.70	8.07	
II	16.54	14.38	13.34	7.24	6.30	5.84	8.70	7.56	7.02	
STUTT GART										
IA	48.42	42.10	38.91	21.20	18.43	17.04	25.47	22.14	20.47	
IB	47.86	41.62	38.46	20.95	18.22	16.84	25.17	21.89	20.23	
IC	31.22	27.14	25.09	13.67	11.88	10.99	16.42	14.27	13.20	
ID	24.98	21.73	20.08	10.94	9.51	8.79	13.14	11.43	10.56	
IE	20.46	17.80	16.45	8.96	7.79	7.20	10.76	9.36	8.65	
IF	20.07	17.45	16.13	8.79	7.64	7.06	10.56	9.18	8.48	
IG	17.62	15.32	14.16	7.71	6.71	6.20	9.27	8.06	7.45	
IH	18.39	15.99	14.78	8.05	7.00	6.47	9.67	8.41	7.77	
II	16.97	14.76	13.64	7.43	6.46	5.97	8.93	7.76	7.17	
MUENCHEN										
IA	42.83	37.24	34.42	18.75	16.30	15.07	22.53	19.59	18.10	
IB	42.31	36.79	34.00	18.52	16.11	14.89	22.25	19.35	17.88	
IC	36.79	31.99	29.57	16.11	14.01	12.95	19.35	16.83	15.55	
ID	24.04	20.90	19.32	10.53	9.15	8.46	12.64	10.99	10.16	
IE	20.22	17.58	16.25	8.85	7.70	7.11	10.64	9.25	8.55	
IF	19.65	17.08	15.79	8.60	7.48	6.91	10.34	8.98	8.31	
IG	17.22	14.97	13.84	7.54	6.55	6.06	9.06	7.87	7.28	
IH	17.64	15.34	14.18	7.72	6.72	6.21	9.28	8.07	7.46	
II	16.23	14.11	13.04	7.11	6.18	5.71	8.54	7.42	6.86	
SUEDLICHES GEBIET										

PRIX DE L'ELECTRICITE POUR USAGES INDUSTRIELS

1 JANUAR 1995 1 JANUARY 1995 1 JANVIER 1995	NATIONALE WAEHRUNG / KWH NATIONAL CURRENCY / KWH MONNAIE NATIONALE/ KWH			KKS PPS SPA / 100 KWH			ECUS/ 100 KWH			
VERBRAUCHER-TYPEN	STEUERN INBEGR.	OHNE MWST.	OHNE STEUERN	STEUERN INBEGR.	OHNE MWST.	OHNE STEUERN	STEUERN INBEGR.	OHNE MWST.	OHNE STEUERN	
STANDARD CONSUMERS	WITH TAXES	VAT EXCL.	TAXES EXCL.	WITH TAXES	VAT EXCL.	TAXES EXCL.	WITH TAXES	VAT EXCL.	TAXES EXCL.	
CONSUMMATEURS TYPE	TAXES COMPRISES	HORS TVA	HORS TAXES	TAXES COMPRISES	HORS TVA	HORS TAXES	TAXES COMPRISES	HORS TVA	HORS TAXES	
DEUTSCHLAND (PF)										
IA	41.37	35.97	35.97	18.11	15.75	15.75	21.76	18.92	18.92	
IB	41.00	35.65	35.65	17.95	15.61	15.61	21.56	18.75	18.75	
IC	31.82	27.67	27.67	13.93	12.11	12.11	16.74	14.55	14.55	
ID	23.73	20.64	20.64	10.39	9.04	9.04	12.48	10.86	10.86	
IE	20.10	17.48	17.48	8.80	7.65	7.65	10.57	9.19	9.19	
IF	20.06	17.45	17.45	8.78	7.64	7.64	10.55	9.18	9.18	
IG	17.26	15.01	15.01	7.56	6.57	6.57	9.08	7.89	7.89	
IH	18.36	15.96	15.96	8.04	6.99	6.99	9.66	8.39	8.39	
II	16.39	14.25	14.25	7.18	6.24	6.24	8.62	7.50	7.50	
ERFURT										
IA	33.80	29.39	29.39	14.80	12.87	12.87	17.78	15.46	15.46	
IB	33.16	28.84	28.84	14.52	12.63	12.63	17.44	15.17	15.17	
IC	31.07	27.02	27.02	13.60	11.83	11.83	16.34	14.21	14.21	
ID	25.15	21.87	21.87	11.01	9.58	9.58	13.23	11.50	11.50	
IE	21.21	18.45	18.45	9.29	8.08	8.08	11.16	9.70	9.70	
IF	19.47	16.93	16.93	8.52	7.41	7.41	10.24	8.90	8.90	
IG	15.69	13.64	13.64	6.87	5.97	5.97	8.25	7.17	7.17	
IH	16.75	14.56	14.56	7.33	6.37	6.37	8.81	7.66	7.66	
II	14.29	12.43	12.43	6.26	5.44	5.44	7.52	6.54	6.54	
LEIPZIG										
IA	42.55	37.00	37.00	18.63	16.20	16.20	22.38	19.46	19.46	
IB	42.55	37.00	37.00	18.63	16.20	16.20	22.38	19.46	19.46	
IC	38.50	33.48	33.48	16.86	14.66	14.66	20.25	17.61	17.61	
ID	25.00	21.74	21.74	10.95	9.52	9.52	13.15	11.43	11.43	
IE	20.36	17.70	17.70	8.91	7.75	7.75	10.71	9.31	9.31	
IF	20.36	17.70	17.70	8.91	7.75	7.75	10.71	9.31	9.31	
IG	17.28	15.03	15.03	7.57	6.58	6.58	9.09	7.91	7.91	
IH	16.46	14.31	14.31	7.21	6.27	6.27	8.66	7.53	7.53	
II	14.19	12.34	12.34	6.21	5.40	5.40	7.46	6.49	6.49	
ROSTOCK										
ELLAS (DR)										
IA	29.22	24.76	24.76	12.62	10.69	10.69	9.88	8.37	8.37	
IB	29.11	24.67	24.67	12.57	10.65	10.65	9.84	8.34	8.34	
IC	26.88	22.78	22.78	11.61	9.84	9.84	9.09	7.70	7.70	
ID	21.40	18.13	18.13	9.24	7.83	7.83	7.24	6.13	6.13	
IE	19.81	16.78	16.78	8.55	7.25	7.25	6.70	5.67	5.67	
IF	19.81	16.78	16.78	8.55	7.25	7.25	6.70	5.67	5.67	
IG	16.83	14.26	14.26	7.27	6.16	6.16	5.69	4.82	4.82	
IH	15.42	13.07	13.07	6.66	5.64	5.64	5.21	4.42	4.42	
II	13.63	11.55	11.55	5.89	4.99	4.99	4.61	3.91	3.91	
ATHINAI										
ESPANA (PTA)										
IA	22.44	19.34	19.34	17.21	14.83	14.83	13.64	11.76	11.76	
IB	22.44	19.34	19.34	17.21	14.83	14.83	13.64	11.76	11.76	
IC	16.99	14.65	14.65	13.03	11.24	11.24	10.33	8.90	8.90	
ID	15.62	13.47	13.47	11.98	10.33	10.33	9.49	8.19	8.19	
IE	13.96	12.03	12.03	10.71	9.23	9.23	8.49	7.31	7.31	
IF	13.07	11.27	11.27	10.03	8.64	8.64	7.94	6.85	6.85	
IG	11.76	10.14	10.14	9.02	7.78	7.78	7.15	6.16	6.16	
IH	11.78	10.16	10.16	9.04	7.79	7.79	7.16	6.18	6.18	
II	10.56	9.11	9.11	8.10	6.99	6.99	6.42	5.54	5.54	
MADRID										

PRIX DE L'ELECTRICITE POUR USAGES INDUSTRIELS

1 JANUAR 1995 1 JANUARY 1995 1 JANVIER 1995	NATIONALE WAEHRUNG / KWH NATIONAL CURRENCY / KWH MONNAIE NATIONALE/ KWH			KKS	PPS	SPA / 100 KWH	ECUS/ 100 KWH			
VERBRAUCHER-TYPEN STANDARD CONSUMERS CONSOMMATEURS TYPE	STEURN INBEGR. WITH TAXES TAXES COMPRISES	OHNE MWST. VAT EXCL. HORS TVA	OHNE STEUERN TAXES EXCL. HORS TAXES	STEURN INBEGR. WITH TAXES TAXES COMPRISES	OHNE MWST. VAT EXCL. HORS TVA	OHNE STEUERN TAXES EXCL. HORS TAXES	STEURN INBEGR. WITH TAXES TAXES COMPRISES	OHNE MWST. VAT EXCL. HORS TVA	OHNE STEUERN TAXES EXCL. HORS TAXES	

FRANCE (CENT.)

	FRANCE (CENT.)						PARIS		
IA	87.49	73.77	66.73	12.41	10.47	9.47	13.31	11.22	10.15
IB	82.27	69.37	66.73	11.67	9.84	9.47	12.52	10.55	10.15
IC	75.91	64.00	61.56	10.77	9.08	8.73	11.55	9.74	9.37
ID	60.36	50.89	50.89	8.56	7.22	7.22	9.18	7.74	7.74
IE	50.70	42.75	42.75	7.19	6.07	6.07	7.71	6.50	6.50
IF	50.70	42.75	42.75	7.19	6.07	6.07	7.71	6.50	6.50
IG	43.73	36.88	36.88	6.20	5.23	5.23	6.65	5.61	5.61
IH	39.67	33.45	33.45	5.63	4.75	4.75	6.04	5.09	5.09
II	35.59	30.01	30.01	5.05	4.26	4.26	5.41	4.57	4.57

LILLE

	LILLE						LILLE		
IA	86.74	73.13	66.73	12.31	10.38	9.47	13.20	11.13	10.15
IB	81.99	69.13	66.73	11.63	9.81	9.47	12.47	10.52	10.15
IC	75.64	63.78	61.56	10.73	9.05	8.73	11.51	9.70	9.37
ID	60.36	50.89	50.89	8.56	7.22	7.22	9.18	7.74	7.74
IE	50.70	42.75	42.75	7.19	6.07	6.07	7.71	6.50	6.50
IF	50.70	42.75	42.75	7.19	6.07	6.07	7.71	6.50	6.50
IG	43.73	36.88	36.88	6.20	5.23	5.23	6.65	5.61	5.61
IH	39.67	33.45	33.45	5.63	4.75	4.75	6.04	5.09	5.09
II	35.59	30.01	30.01	5.05	4.26	4.26	5.41	4.57	4.57

STRASBOURG

	STRASBOURG						STRASBOURG		
IA	81.67	68.86	66.73	11.59	9.77	9.47	12.42	10.48	10.15
IB	80.09	67.53	66.73	11.36	9.58	9.47	12.18	10.27	10.15
IC	73.89	62.30	61.56	10.48	8.84	8.73	11.24	9.48	9.37
ID	60.36	50.89	50.89	8.56	7.22	7.22	9.18	7.74	7.74
IE	50.70	42.75	42.75	7.19	6.07	6.07	7.71	6.50	6.50
IF	50.70	42.75	42.75	7.19	6.07	6.07	7.71	6.50	6.50
IG	43.73	36.88	36.88	6.20	5.23	5.23	6.65	5.61	5.61
IH	39.67	33.45	33.45	5.63	4.75	4.75	6.04	5.09	5.09
II	35.59	30.01	30.01	5.05	4.26	4.26	5.41	4.57	4.57

LYON (1)


	LYON (1)						LYON (1)		
IA	86.74	73.13	66.73	12.31	10.38	9.47	13.20	11.13	10.15
IB	81.99	69.13	66.73	11.63	9.81	9.47	12.47	10.52	10.15
IC	75.64	63.78	61.56	10.73	9.05	8.73	11.51	9.70	9.37
ID	60.36	50.89	50.89	8.56	7.22	7.22	9.18	7.74	7.74
IE	50.70	42.75	42.75	7.19	6.07	6.07	7.71	6.50	6.50
IF	50.70	42.75	42.75	7.19	6.07	6.07	7.71	6.50	6.50
IG	43.73	36.88	36.88	6.20	5.23	5.23	6.65	5.61	5.61
IH	39.67	33.45	33.45	5.63	4.75	4.75	6.04	5.09	5.09
II	35.59	30.01	30.01	5.05	4.26	4.26	5.41	4.57	4.57

IRELAND (P)

	IRELAND (P)			DUBLIN					
IA	11.421	10.152	10.152	16.00	14.22	14.22	14.33	12.74	12.74
IB	11.267	10.015	10.015	15.78	14.03	14.03	14.14	12.57	12.57
IC	9.042	8.037	8.037	12.67	11.26	11.26	11.35	10.08	10.08
ID	6.910	6.142	6.142	9.68	8.60	8.60	8.67	7.71	7.71
IE	5.640	5.013	5.013	7.90	7.02	7.02	7.08	6.29	6.29
IF	5.274	4.688	4.688	7.39	6.57	6.57	6.62	5.88	5.88
IG	4.538	4.034	4.034	6.36	5.65	5.65	5.69	5.06	5.06
IH	4.544	4.039	4.039	6.37	5.66	5.66	5.70	5.07	5.07
II	4.132	3.673	3.673	5.79	5.14	5.14	5.18	4.61	4.61

(1) PREISE AUCH GUELTIG FUER / PRICES ALSO VALID FOR / PRIX EGALEMENT VALABLES POUR : MARSEILLE, TOULOUSE

PRIX DE L'ELECTRICITE POUR USAGES INDUSTRIELS

1 JANUAR 1995 1 JANUARY 1995 1 JANVIER 1995	NATIONALE WAEHRUNG / KWH NATIONAL CURRENCY / KWH MONNAIE NATIONALE/ KWH			KKS	PPS	SPA / 100 KWH	ECUS/ 100 KWH			
VERBRAUCHER-TYPEN STANDARD CONSUMERS CONSOMMATEURS TYPE	STEUERN INBEGR. WITH TAXES TAXES COMPRISES	OHNE MWST. VAT EXCL. HORS TVA	OHNE STEUERN TAXES EXCL. HORS TAXES	STEUERN INBEGR. WITH TAXES TAXES COMPRISES	OHNE MWST. VAT EXCL. HORS TVA	OHNE STEUERN TAXES EXCL. HORS TAXES	STEUERN INBEGR. WITH TAXES TAXES COMPRISES	OHNE MWST. VAT EXCL. HORS TVA	OHNE STEUERN TAXES EXCL. HORS TAXES	

	ITALIA (LIT)						NATIONAL		
IA	354.14	324.90	273.20	20.91	19.19	16.13	17.72	16.25	13.67
IB	289.39	265.50	219.80	17.09	15.68	12.98	14.48	13.28	11.00
IC	237.21	217.62	171.92	14.01	12.85	10.15	11.87	10.89	8.60
ID	218.13	200.12	154.42	12.88	11.82	9.12	10.91	10.01	7.72
IE	187.93	172.41	126.71	11.10	10.18	7.48	9.40	8.62	6.34
IF	171.65	157.48	126.71	10.14	9.30	7.48	8.59	7.88	6.34
IG	135.98	124.75	103.23	8.03	7.37	6.10	6.80	6.24	5.16
IH	125.49	115.13	96.94	7.41	6.80	5.72	6.28	5.76	4.85
II	108.20	99.27	81.34	6.39	5.86	4.80	5.41	4.97	4.07

	G.D.LUXEMBOURG (LFR)						NATIONAL 50% (1) (2)		
IA	5.89	5.56	5.56	13.66	12.89	12.89	15.04	14.19	14.19
IB	5.97	5.63	5.63	13.85	13.06	13.06	15.24	14.38	14.38
IC	4.59	4.33	4.33	10.66	10.05	10.05	11.73	11.07	11.07
ID	3.74	3.53	3.53	8.68	8.19	8.19	9.56	9.02	9.02
IE	3.17	3.00	3.00	7.36	6.95	6.95	8.10	7.65	7.65
IF	2.44	2.30	2.30	5.65	5.33	5.33	6.22	5.87	5.87
IG	2.01	1.89	1.89	4.65	4.39	4.39	5.12	4.83	4.83
IH	2.08	1.96	1.96	4.82	4.55	4.55	5.31	5.01	5.01
II	1.84	1.73	1.73	4.26	4.02	4.02	4.69	4.42	4.42

	G.D.LUXEMBOURG (LFR)						NATIONAL 0% (1)		
IA	7.41	6.99	6.99	17.19	16.22	16.22	18.92	17.85	17.85
IB	7.36	6.95	6.95	17.08	16.11	16.11	18.80	17.74	17.74
IC	5.48	5.17	5.17	12.71	11.99	11.99	13.99	13.20	13.20
ID	4.31	4.06	4.06	9.99	9.43	9.43	11.00	10.38	10.38
IE	3.53	3.33	3.33	8.18	7.72	7.72	9.01	8.50	8.50
IF	2.44	2.30	2.30	5.65	5.33	5.33	6.22	5.87	5.87
IG	2.01	1.89	1.89	4.65	4.39	4.39	5.12	4.83	4.83
IH	2.08	1.96	1.96	4.82	4.55	4.55	5.31	5.01	5.01
II	1.84	1.73	1.73	4.26	4.02	4.02	4.69	4.42	4.42


	G.D.LUXEMBOURG (LFR)						NATIONAL 100% (1)		
IA	4.61	4.35	4.35	10.70	10.09	10.09	11.77	11.11	11.11
IB	4.53	4.27	4.27	10.51	9.91	9.91	11.57	10.91	10.91
IC	3.71	3.50	3.50	8.60	8.12	8.12	9.47	8.93	8.93
ID	3.18	3.00	3.00	7.37	6.96	6.96	8.12	7.66	7.66
IE	2.82	2.66	2.66	6.55	6.17	6.17	7.21	6.80	6.80
IF	2.44	2.30	2.30	5.65	5.33	5.33	6.22	5.87	5.87
IG	2.01	1.89	1.89	4.65	4.39	4.39	5.12	4.83	4.83
IH	2.08	1.96	1.96	4.82	4.55	4.55	5.31	5.01	5.01
II	1.84	1.73	1.73	4.26	4.02	4.02	4.69	4.42	4.42

	NEDERLAND (CENTS)						ROTTERDAM		
IA	25.58	21.77	21.77	11.15	9.49	9.49	12.00	10.21	10.21
IB	25.64	21.82	21.82	11.18	9.51	9.51	12.03	10.24	10.24
IC	28.21	24.01	24.01	12.30	10.47	10.47	13.24	11.27	11.27
ID	22.02	18.74	18.74	9.60	8.17	8.17	10.33	8.79	8.79
IE	17.52	14.91	14.91	7.64	6.50	6.50	8.22	7.00	7.00
IF	15.20	12.94	12.94	6.63	5.64	5.64	7.13	6.07	6.07
IG	12.37	10.53	10.53	5.39	4.59	4.59	5.80	4.94	4.94
IH	13.14	11.18	11.18	5.73	4.88	4.88	6.17	5.25	5.25
II	11.64	9.91	9.91	5.08	4.32	4.32	5.46	4.65	4.65


(1) LEISTUNGSVERMINDERUNG / POWER REDUCTION / EFFACEMENT DE PUISSANCE

(2) VERWENDET FUER GEMEINSCHAFTLICHE VERGLEICHE / TAKEN FOR COMMUNITY COMPARISON / UTILISE POUR COMPARAISON COMMUNAUTAIRE

PRIX DE L'ELECTRICITE POUR USAGES INDUSTRIELS

1 JANUAR 1995 1 JANUARY 1995 1 JANVIER 1995	NATIONALE WAERHUNG / KWH NATIONAL CURRENCY / KWH MONNAIE NATIONALE/ KWH			KKS PPS SPA / 100 KWH			ECUS/ 100 KWH			
VERBRAUCHER-TYPEN	STEURN INBEGR.	OHNE MWST.	OHNE STEUERN	STEURN INBEGR.	OHNE MWST.	OHNE STEUERN	STEURN INBEGR.	OHNE MWST.	OHNE STEUERN	
STANDARD CONSUMERS	WITH TAXES	VAT EXCL.	TAXES EXCL.	WITH TAXES	VAT EXCL.	TAXES EXCL.	WITH TAXES	VAT EXCL.	TAXES EXCL.	
CONSUMMATEURS TYPE	TAXES COMPRISES	HORS TVA	HORS TAXES	TAXES COMPRISES	HORS TVA	HORS TAXES	TAXES COMPRISES	HORS TVA	HORS TAXES	
NEDERLAND (CENTS)										
NOORD-HOLLAND										
IA	22.77	19.38	19.38	9.93	8.45	8.45	10.68	9.09	9.09	
IB	22.61	19.24	19.24	9.86	8.39	8.39	10.61	9.03	9.03	
IC	23.19	19.74	19.74	10.11	8.61	8.61	10.88	9.26	9.26	
ID	16.58	14.11	14.11	7.23	6.15	6.15	7.78	6.62	6.62	
IE	13.97	11.89	11.89	6.09	5.18	5.18	6.55	5.58	5.58	
IF	13.71	11.67	11.67	5.98	5.09	5.09	6.43	5.48	5.48	
IG	11.64	9.91	9.91	5.08	4.32	4.32	5.46	4.65	4.65	
IH	12.31	10.48	10.48	5.37	4.57	4.57	5.78	4.92	4.92	
II	10.87	9.25	9.25	4.74	4.03	4.03	5.10	4.34	4.34	
NOORD-BRABANT										
IA	20.80	17.70	17.70	9.07	7.72	7.72	9.76	8.30	8.30	
IB	21.36	18.18	18.18	9.31	7.93	7.93	10.02	8.53	8.53	
IC	24.76	21.07	21.07	10.80	9.19	9.19	11.62	9.89	9.89	
ID	15.82	13.46	13.46	6.90	5.87	5.87	7.42	6.32	6.32	
IE	13.34	11.35	11.35	5.82	4.95	4.95	6.26	5.33	5.33	
IF	13.29	11.31	11.31	5.80	4.93	4.93	6.24	5.31	5.31	
IG	11.88	10.11	10.11	5.18	4.41	4.41	5.57	4.74	4.74	
IH	12.27	10.44	10.44	5.35	4.55	4.55	5.76	4.90	4.90	
II	11.68	9.94	9.94	5.09	4.33	4.33	5.48	4.66	4.66	
PORTUGAL (ESC)										
LISBOA										
IA	25.300	24.100	24.080	18.99	18.09	18.07	12.90	12.29	12.28	
IB	26.250	25.000	24.990	19.70	18.76	18.75	13.38	12.75	12.74	
IC	21.600	20.570	20.570	16.21	15.44	15.44	11.01	10.49	10.49	
ID	18.530	17.640	17.640	13.91	13.24	13.24	9.45	8.99	8.99	
IE	16.460	15.680	15.680	12.35	11.77	11.77	8.39	7.99	7.99	
IF	16.460	15.680	15.680	12.35	11.77	11.77	8.39	7.99	7.99	
IG	13.480	12.840	12.840	10.12	9.64	9.64	6.87	6.55	6.55	
IH	12.560	11.970	11.970	9.43	8.98	8.98	6.40	6.10	6.10	
II	11.600	11.050	11.050	8.71	8.29	8.29	5.91	5.63	5.63	
S.MIGUEL ACORES										
IA	33.710	32.410	32.410	25.30	24.32	24.32	17.19	16.53	16.53	
IB	33.710	32.410	32.410	25.30	24.32	24.32	17.19	16.53	16.53	
IC	29.690	28.550	28.550	22.28	21.43	21.43	15.14	14.56	14.56	
ID	26.660	25.630	25.630	20.01	19.23	19.23	13.59	13.07	13.07	
IE	23.580	22.670	22.670	17.70	17.01	17.01	12.02	11.56	11.56	
IF	23.800	22.880	22.880	17.86	17.17	17.17	12.14	11.67	11.67	
IG										
IH										
II										
UNITED-KINGDOM (P)										
LONDON										
IA	8.850	7.530	7.530	12.81	10.90	10.90	11.23	9.55	9.55	
IB	8.640	7.350	7.350	12.51	10.64	10.64	10.96	9.32	9.32	
IC	7.230	6.150	6.150	10.47	8.90	8.90	9.17	7.80	7.80	
ID	6.270	5.340	5.340	9.08	7.73	7.73	7.95	6.77	6.77	
IE	5.560	4.730	4.730	8.05	6.85	6.85	7.05	6.00	6.00	
IF	5.280	4.490	4.490	7.64	6.50	6.50	6.70	5.70	5.70	
IG	4.860	4.140	4.140	7.04	5.99	5.99	6.17	5.25	5.25	
IH	5.030	4.280	4.280	7.28	6.20	6.20	6.38	5.43	5.43	
II	4.710	4.010	4.010	6.82	5.80	5.80	5.97	5.09	5.09	

PRIX DE L'ELECTRICITE POUR USAGES INDUSTRIELS

1 JANUAR 1995 1 JANUARY 1995 1 JANVIER 1995	NATIONALE WAERHUNG / KWH NATIONAL CURRENCY / KWH MONNAIE NATIONALE/ KWH			KKS PPS SPA / 100 KWH			ECUS/ 100 KWH			
	VERBRAUCHER-TYPEN STANDARD CONSUMERS CONSOMMATEURS TYPE	STEUERN INBEGR. WITH TAXES TAXES COMPRISES	OHNE MWST. VAT EXCL. HORS TVA	OHNE STEUERN TAXES EXCL. HORS TAXES	STEUERN INBEGR. WITH TAXES TAXES COMPRISES	OHNE MWST. VAT EXCL. HORS TVA	OHNE STEUERN TAXES EXCL. HORS TAXES	STEUERN INBEGR. WITH TAXES TAXES COMPRISES	OHNE MWST. VAT EXCL. HORS TVA	

UNITED-KINGDOM (P)

LEEDS

IA	9.080	7.730	7.730	13.14	11.19	11.19	11.52	9.81	9.81
IB	11.030	9.390	9.390	15.97	13.59	13.59	13.99	11.91	11.91
IC
ID	6.420	5.460	5.460	9.29	7.90	7.90	8.14	6.93	6.93
IE	5.820	4.950	4.950	8.42	7.17	7.17	7.38	6.28	6.28
IF	4.810	4.090	4.090	6.96	5.92	5.92	6.10	5.19	5.19
IG
IH
II

BIRMINGHAM

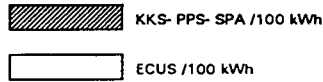
IA	8.800	7.490	7.490	12.74	10.84	10.84	11.16	9.50	9.50
IB	8.650	7.360	7.360	12.52	10.65	10.65	10.97	9.34	9.34
IC	7.610	6.480	6.480	11.02	9.38	9.38	9.65	8.22	8.22
ID	6.150	5.230	5.230	8.90	7.57	7.57	7.80	6.63	6.63
IE	5.480	4.660	4.660	7.93	6.75	6.75	6.95	5.91	5.91
IF	5.080	4.320	4.320	7.35	6.25	6.25	6.44	5.48	5.48
IG	4.750	4.040	4.040	6.88	5.85	5.85	6.03	5.12	5.12
IH
II

GLASGOW

IA	10.720	9.120	9.120	15.52	13.20	13.20	13.60	11.57	11.57
IB	10.410	8.860	8.860	15.07	12.83	12.83	13.21	11.24	11.24
IC
ID
IE
IF
IG
IH
II

PRIX DE L'ELECTRICITE POUR USAGES INDUSTRIELS

1	B	BELGIQUE NATIONAL	10	NL	ROTTERDAM
2	DK	DANMARK NATIONAL	11	P	LISBOA
3	D	DUESSELDORF	12	UK	LONDON
4	GR	ATHINAI			
5	E	MADRID			
6	F	PARIS			
7	IRL	DUBLIN			
8	I	ITALIE NATIONAL			
9	L	LUXEMBOURG *			

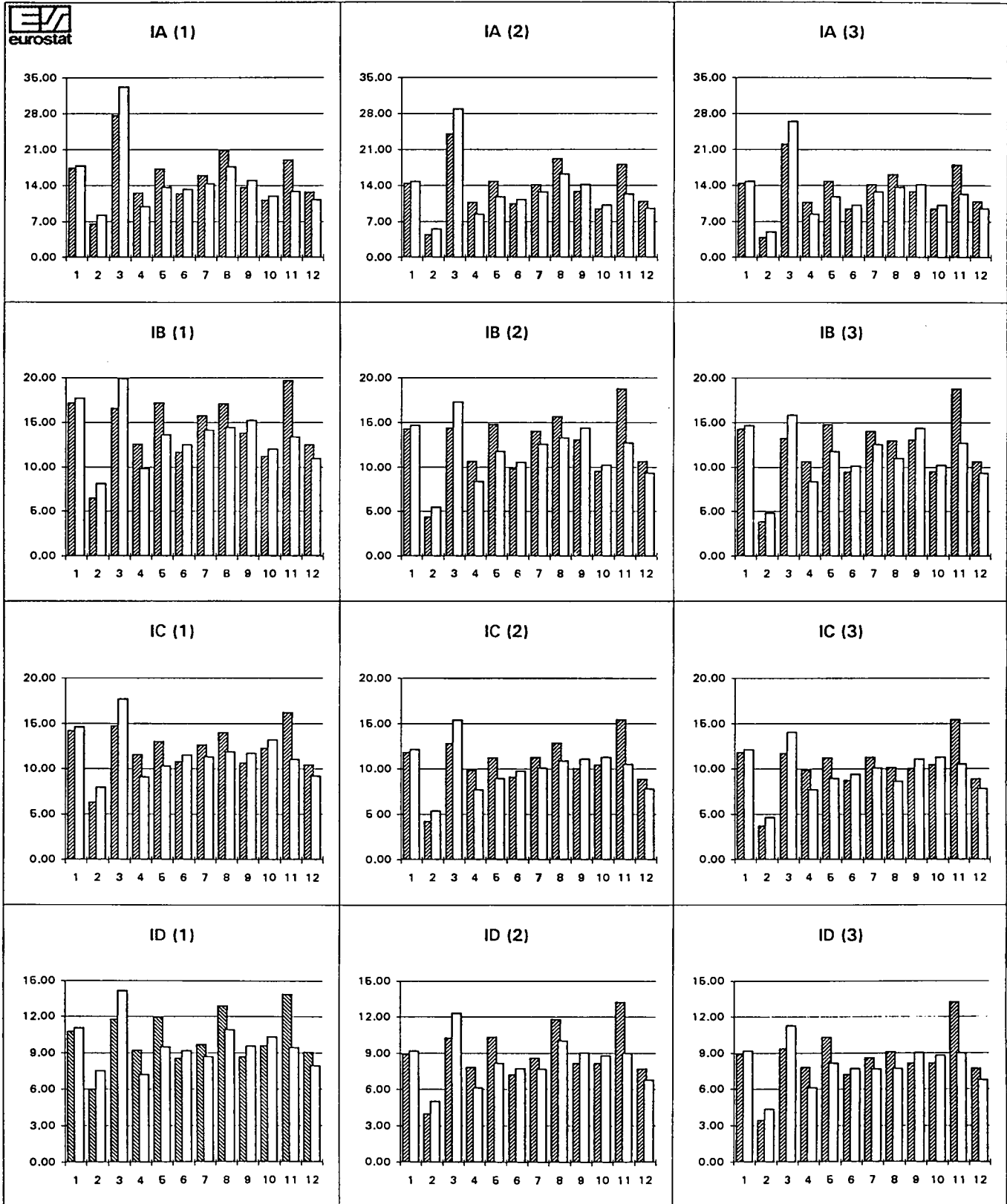


(1) STEUERN INBEGR./ TAXES INCL./ TAXES COMPRISES

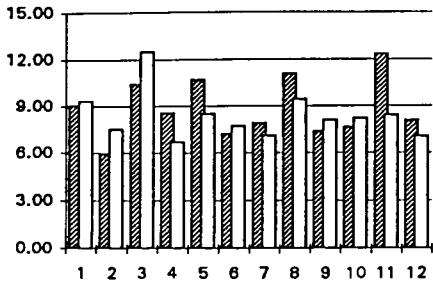
(2) OHNE MWST./ VAT EXCL./ HORS TVA

(3) OHNE STEUERN/TAXES EXCL./ HORS TAXES

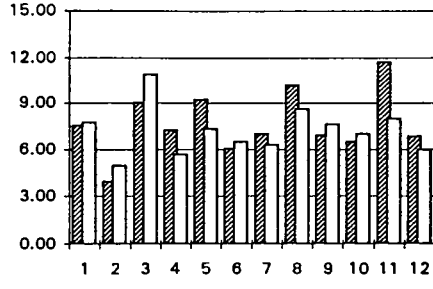
* 50% LEISTUNGSABSENKUNG/ POWER REDUCTION/ EFFACEMENT DE PUISSANCE



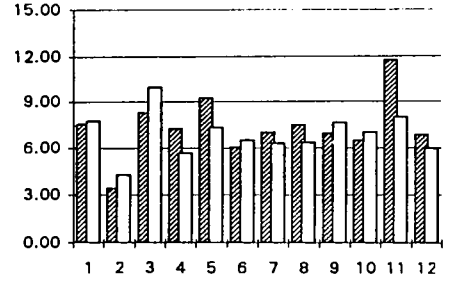
IE (1)



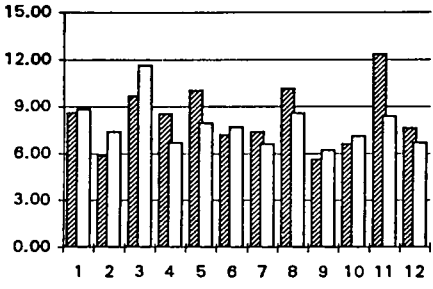
IE (2)



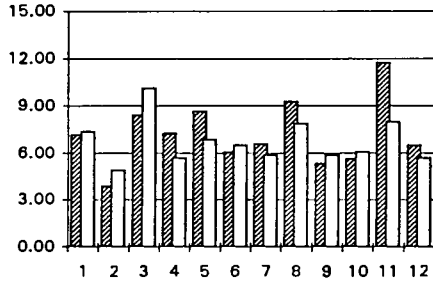
IE (3)



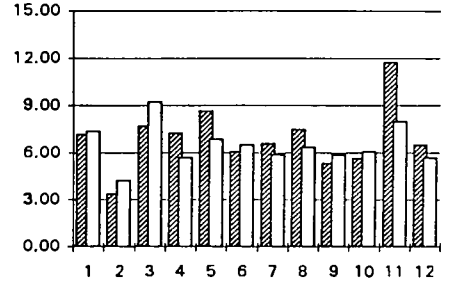
IF (1)



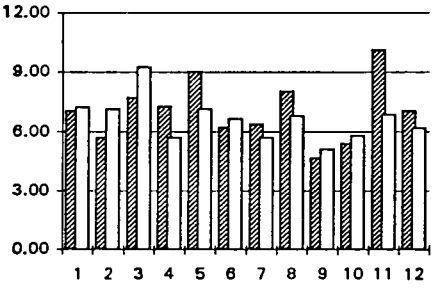
IF (2)



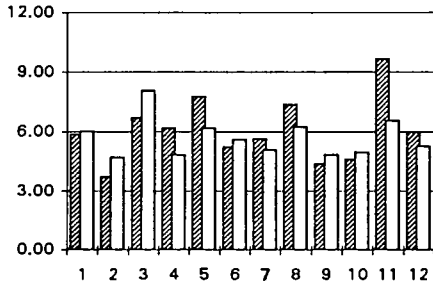
IF (3)



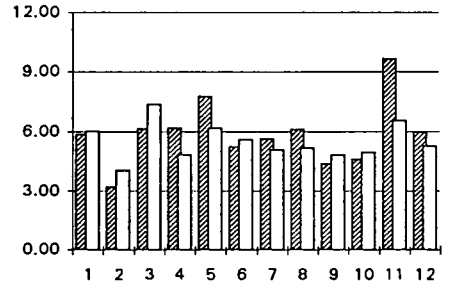
IG (1)



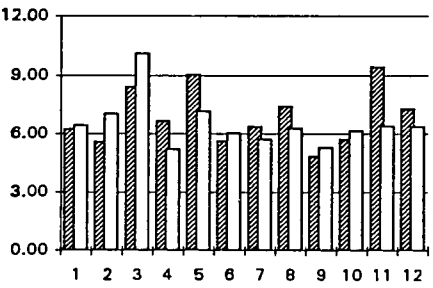
IG (2)



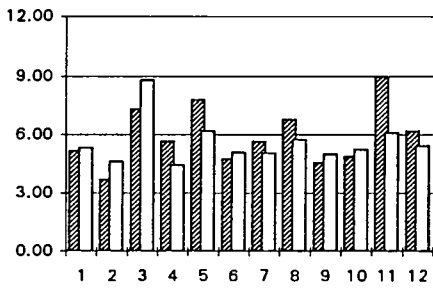
IG (3)



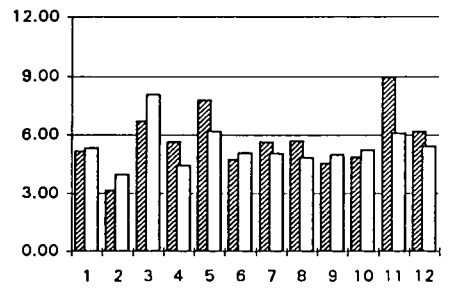
IH (1)



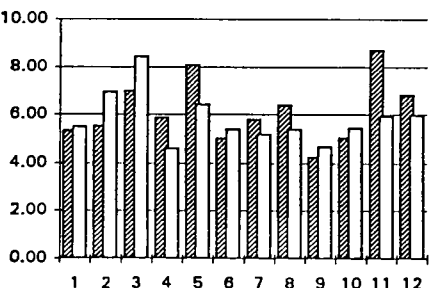
IH (2)



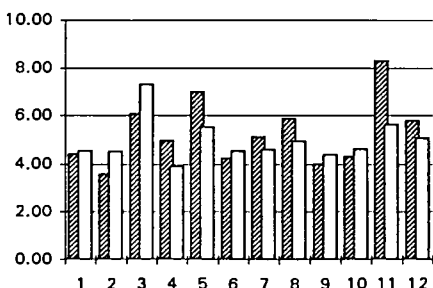
IH (3)



II (1)



II (2)



II (3)

