



STATISTICS IN FOCUS

Energy and industry



1997 28

ISSN 1024-4328

Electricity prices for EU industry on 1 July 1997: downward trend


These comments are based on prices collected within the framework of Council Directive 90/377/EEC expressed in national currency. For the comparative tables and the graphics, prices in ECU and purchasing power standards (PPS) have been used.

A study of the variations in deflated VAT-excluded electricity prices from 1 January 1997 to 1 July 1997 reveals that in most locations¹ prices showed a drop which affected all categories of standard consumers.

The biggest drops affected in United Kingdom prices for I_b^2 (-30.3%), I_c (-10.2%) and I_e (-10%) in Leeds, I_e and I_f in London and in Birmingham (between -12% and -16%), as well as in Germany those of I_g (-10.8%), I_h (-7.9%) and I_i (-13.7%) in Hannover. In France, the drop was between -8.5% (I_e) and -4.7% (I_i).

The rises affected mainly prices for Belgium between +0.6% (I_e) and +1.8% (I_i).

Variation in deflated VAT-excluded prices in national currency (number of locations)

	I_a	I_b	I_c	I_d	I_e	I_f	I_g	I_h	I_i
Upward trend	2	1	2	1	4	3	3	3	3
Downward trend	34	35	33	32	31	31	29	29	28

- 1 The collection locations are listed above and to the right of the price tables.
- 2 See table below for standard consumers definition.

Manuscript completed on = 28.11.1997

For further information please contact: Secrétariat Energie
Eurostat, L-2920 Luxembourg, tel. 4301-32040

Fax: 4301-34771

Price (excl. VAT) in Luxembourg: Subscription 'Statistics in focus' of all themes: ECU 310
Subscription 'Statistics in focus' of Theme 4 'Energy and industry': ECU 85
Single copy: ECU 6

Catalogue number: CA-NL-97-028-EN-C

Marker prices in national currency



1 July 1997

(/ kWh)

	25 MW			50 MW			75 MW		
	With taxes	VAT excl.	Taxes excl.	With taxes	VAT excl.	Taxes excl.	With taxes	VAT excl.	Taxes excl.
BELGIUM	BEF								
National	2.20	1.82	1.82	2.07	1.71	1.71	2.04	1.69	1.69
GERMANY	1 / 100 DEM								
North-center									
Lowest	12.54	10.90	10.90	12.04	10.47	10.47	11.60	10.09	10.09
Highest	13.94	12.12	12.12	13.54	11.77	11.77	13.25	11.52	11.52
West									
Lowest	12.56	10.92	10.92	12.06	10.49	10.49	11.62	10.10	10.10
Highest	14.65	12.74	12.74	14.35	12.48	12.48	14.09	12.25	12.25
South									
Lowest	12.80	11.13	11.13	12.16	10.57	10.57	11.74	10.21	10.21
Highest	15.35	13.35	13.35	15.12	13.15	13.15	14.78	12.85	12.85
East									
Lowest	14.63	12.72	12.72	14.19	12.34	12.34	13.75	11.96	11.96
Highest	16.61	14.44	14.44	16.19	14.08	14.08	15.94	13.86	13.86
SPAIN	ESP								
National	5.26	5.06	5.06	5.26	5.06	5.06	5.26	5.06	5.06
FRANCE	1 / 100 FRF								
National									
Base : 5000 Hours	35.79	29.68	29.68	32.73	27.14	27.14	31.71	26.29	26.29
Base : -6%	33.65	27.90	27.90	30.77	25.51	25.51	29.80	24.71	24.71
Base : -8%	32.94	27.31	27.31	30.11	24.97	24.97	29.17	24.19	24.19
Base : -10%	32.21	26.71	26.71	29.46	24.43	24.43	28.53	23.66	23.66
ITALY	ITL								
National	113.43	103.12	84.80	110.94	100.85	82.67	110.11	100.10	81.86
NETHERLANDS	1 / 100 NLG								
National									
Lowest	11.69	9.95	9.95	11.66	9.92	9.92	:	:	:
Highest	12.42	10.57	10.57	12.43	10.58	10.58	:	:	:
PORTUGAL	PTE								
National									
Lowest	9.21	8.77	8.77	9.65	9.19	9.19	:	:	:
Highest	11.56	11.01	11.01	10.81	10.29	10.29	:	:	:
Reference	10.05	9.57	9.57	10.40	9.90	9.90	:	:	:
UNITED KINGDOM	1 / 100 GBP								
National	3.80	3.23	3.23	3.48	2.96	2.96	:	:	:
NORWAY	1 / 100 NOK								
National									
Lowest	14.00	11.40	11.40	20.10	16.30	16.30	10.70	8.70	8.70
Highest	40.10	32.60	32.60	21.20	17.30	17.30	27.00	21.90	21.90

DENMARK, LUXEMBOURG, IRELAND, AUSTRIA, FINLAND 75 MW :
Confidential marker prices, less than 3 consumers in the category

ITALIA :
"national" series since 1.1.94

Electricity prices for industry



1 July 1997

	National currency (/ kWh)			PPS (/ 100 kWh)			ECUS (/ 100 kWh)		
	With taxes	VAT excl.	Taxes excl.	With taxes	VAT excl.	Taxes excl.	With taxes	VAT excl.	Taxes excl.
BELGIUM									
National	BEF								
_a	7.40	6.11	6.11	18.77	15.51	15.51	18.11	14.96	14.96
_b	7.22	5.97	5.97	18.33	15.15	15.15	17.68	14.61	14.61
_c	5.78	4.78	4.78	14.67	12.12	12.12	14.15	11.69	11.69
_d	4.35	3.59	3.59	11.03	9.11	9.11	10.64	8.79	8.79
_e	3.69	3.05	3.05	9.36	7.74	7.74	9.03	7.46	7.46
_f	3.50	2.90	2.90	8.89	7.35	7.35	8.58	7.09	7.09
_g	2.86	2.36	2.36	7.25	5.99	5.99	6.99	5.78	5.78
_h	2.52	2.09	2.09	6.40	5.29	5.29	6.18	5.10	5.10
_i	2.15	1.78	1.78	5.47	4.52	4.52	5.28	4.36	4.36
DENMARK ¹									
National	DKK								
_a	66.93	44.54	38.64	7.23	4.81	4.17	8.90	5.92	5.14
_b	66.20	43.96	38.06	7.15	4.75	4.11	8.80	5.85	5.06
_c	64.85	42.88	36.98	7.00	4.63	3.99	8.63	5.70	4.92
_d	62.18	40.74	34.84	6.72	4.40	3.76	8.27	5.42	4.63
_e	62.10	40.68	34.78	6.71	4.39	3.76	8.26	5.41	4.63
_f	60.99	39.79	33.89	6.59	4.30	3.66	8.11	5.29	4.51
_g	58.26	37.61	31.71	6.29	4.06	3.42	7.75	5.00	4.22
_h	56.85	36.48	30.58	6.14	3.94	3.30	7.56	4.85	4.07
_i	56.20	35.96	30.06	6.07	3.88	3.25	7.47	4.78	4.00
GERMANY									
Düsseldorf	1 / 100 DEM								
_a	30.54	26.56	26.56	13.96	12.14	12.14	15.42	13.41	13.41
_b	30.11	26.18	26.18	13.76	11.96	11.96	15.21	13.22	13.22
_c	26.20	22.79	22.79	11.97	10.42	10.42	13.23	11.51	11.51
_d	21.99	19.12	19.12	10.05	8.74	8.74	11.10	9.66	9.66
_e	19.98	17.38	17.38	9.13	7.94	7.94	10.09	8.78	8.78
_f	18.13	15.77	15.77	8.29	7.21	7.21	9.16	7.96	7.96
_g	13.96	12.14	12.14	6.38	5.55	5.55	7.05	6.13	6.13
_h	15.12	13.15	13.15	6.91	6.01	6.01	7.64	6.64	6.64
_i	12.49	10.86	10.86	5.71	4.96	4.96	6.31	5.48	5.48
Hamburg									
_a	35.12	30.54	30.54	16.05	13.96	13.96	17.74	15.42	15.42
_b	35.12	30.54	30.54	16.05	13.96	13.96	17.74	15.42	15.42
_c	27.82	24.19	24.19	12.71	11.05	11.05	14.05	12.22	12.22
_d	21.63	18.81	18.81	9.88	8.60	8.60	10.92	9.50	9.50
_e	17.45	15.18	15.18	7.97	6.94	6.94	8.81	7.67	7.67
_f	17.19	14.95	14.95	7.86	6.83	6.83	8.68	7.55	7.55
_g	14.03	12.20	12.20	6.41	5.58	5.58	7.09	6.16	6.16
_h	14.82	12.89	12.89	6.77	5.89	5.89	7.48	6.51	6.51
_i	12.82	11.14	11.14	5.86	5.09	5.09	6.47	5.63	5.63
Hanover									
_a	30.48	26.50	26.50	13.93	12.11	12.11	15.39	13.38	13.38
_b	29.92	26.02	26.02	13.67	11.89	11.89	15.11	13.14	13.14
_c	25.63	22.29	22.29	11.71	10.19	10.19	12.94	11.26	11.26
_d	21.21	18.44	18.44	9.69	8.43	8.43	10.71	9.31	9.31
_e	18.16	15.79	15.79	8.30	7.22	7.22	9.17	7.97	7.97
_f	17.32	15.06	15.06	7.92	6.88	6.88	8.75	7.61	7.61
_g	13.55	11.78	11.78	6.19	5.38	5.38	6.84	5.95	5.95
_h	14.71	12.79	12.79	6.72	5.85	5.85	7.43	6.46	6.46
_i	12.14	10.56	10.56	5.55	4.83	4.83	6.13	5.33	5.33

¹ The prices excluding VAT does not include the deductible taxes of 5 ORE for the CO₂ tax and of 40 ORE for the energy tax. The rate of the SO₂ (non deductible) is 0.9 ORE/kWh.

Electricity prices for industry



1 July 1997

	National currency (/ kWh)			PPS (/ 100 kWh)			ECUS (/ 100 kWh)		
	With taxes	VAT excl.	Taxes excl.	With taxes	VAT excl.	Taxes excl.	With taxes	VAT excl.	Taxes excl.
GERMANY	1 / 100 DEM								
Western zone									
_a	30.49	26.52	26.52	13.93	12.12	12.12	15.40	13.39	13.39
_b	30.50	26.52	26.52	13.94	12.12	12.12	15.40	13.39	13.39
_c	25.80	22.43	22.43	11.79	10.25	10.25	13.03	11.33	11.33
_d	21.98	19.12	19.12	10.04	8.74	8.74	11.10	9.66	9.66
_e	19.60	17.05	17.05	8.96	7.79	7.79	9.90	8.61	8.61
_f	17.86	15.53	15.53	8.16	7.10	7.10	9.02	7.84	7.84
_g	13.77	11.98	11.98	6.29	5.47	5.47	6.95	6.05	6.05
_h	14.90	12.96	12.96	6.81	5.92	5.92	7.52	6.54	6.54
_i	12.25	10.65	10.65	5.60	4.87	4.87	6.19	5.38	5.38
Frankfurt/M									
_a	47.93	41.68	41.68	21.90	19.05	19.05	24.20	21.05	21.05
_b	47.60	41.39	41.39	21.75	18.92	18.92	24.04	20.90	20.90
_c	27.51	23.92	23.92	12.57	10.93	10.93	13.89	12.08	12.08
_d	22.83	19.86	19.86	10.43	9.08	9.08	11.53	10.03	10.03
_e	18.75	16.31	16.31	8.57	7.45	7.45	9.47	8.24	8.24
_f	18.71	16.27	16.27	8.55	7.44	7.44	9.45	8.22	8.22
_g	15.44	13.43	13.43	7.06	6.14	6.14	7.80	6.78	6.78
_h	16.80	14.61	14.61	7.68	6.68	6.68	8.48	7.38	7.38
_i	14.30	12.44	12.44	6.54	5.69	5.69	7.22	6.28	6.28
Stuttgart									
_a	41.27	35.89	35.89	18.86	16.40	16.40	20.84	18.12	18.12
_b	40.19	34.95	34.95	18.37	15.97	15.97	20.30	17.65	17.65
_c	30.92	26.89	26.89	14.13	12.29	12.29	15.61	13.58	13.58
_d	24.87	21.63	21.63	11.37	9.88	9.88	12.56	10.92	10.92
_e	20.55	17.87	17.87	9.39	8.17	8.17	10.38	9.02	9.02
_f	19.65	17.09	17.09	8.98	7.81	7.81	9.92	8.63	8.63
_g	16.34	14.21	14.21	7.47	6.49	6.49	8.25	7.18	7.18
_h	16.94	14.73	14.73	7.74	6.73	6.73	8.55	7.44	7.44
_i	14.72	12.80	12.80	6.73	5.85	5.85	7.43	6.46	6.46
Munich									
_a	43.60	37.91	37.91	19.93	17.32	17.32	22.02	19.14	19.14
_b	43.08	37.46	37.46	19.69	17.12	17.12	21.76	18.92	18.92
_c	27.04	23.51	23.51	12.36	10.74	10.74	13.66	11.87	11.87
_d	21.60	18.78	18.78	9.87	8.58	8.58	10.91	9.48	9.48
_e	17.67	15.37	15.37	8.08	7.02	7.02	8.92	7.76	7.76
_f	17.39	15.12	15.12	7.95	6.91	6.91	8.78	7.64	7.64
_g	15.24	13.25	13.25	6.96	6.06	6.06	7.70	6.69	6.69
_h	15.92	13.84	13.84	7.28	6.32	6.32	8.04	6.99	6.99
_i	14.67	12.76	12.76	6.70	5.83	5.83	7.41	6.44	6.44
Southern zone									
_a	37.44	32.56	32.56	17.11	14.88	14.88	18.91	16.44	16.44
_b	36.96	32.14	32.14	16.89	14.69	14.69	18.66	16.23	16.23
_c	32.77	28.49	28.49	14.98	13.02	13.02	16.55	14.39	14.39
_d	20.86	18.14	18.14	9.53	8.29	8.29	10.53	9.16	9.16
_e	17.49	15.21	15.21	7.99	6.95	6.95	8.83	7.68	7.68
_f	16.94	14.73	14.73	7.74	6.73	6.73	8.55	7.44	7.44
_g	14.91	12.97	12.97	6.81	5.93	5.93	7.53	6.55	6.55
_h	15.34	13.34	13.34	7.01	6.10	6.10	7.75	6.74	6.74
_i	14.10	12.26	12.26	6.44	5.60	5.60	7.12	6.19	6.19

Electricity prices for industry



1 July 1997

	National currency (/ kWh)			KKS (/ 100 kWh)			ECUS (/ 100 kWh)		
	With taxes	VAT excl.	Taxes excl.	With taxes	VAT excl.	Taxes excl.	With taxes	VAT excl.	Taxes excl.
	GERMANY								
Erfurt	1 / 100 DEM								
_a	41.41	36.01	36.01	18.92	16.46	16.46	20.91	18.19	18.19
_b	41.04	35.69	35.69	18.76	16.31	16.31	20.73	18.02	18.02
_c	32.00	27.83	27.83	14.62	12.72	12.72	16.16	14.05	14.05
_d	23.96	20.84	20.84	10.95	9.52	9.52	12.10	10.52	10.52
_e	20.00	17.39	17.39	9.14	7.95	7.95	10.10	8.78	8.78
_f	19.96	17.35	17.35	9.12	7.93	7.93	10.08	8.76	8.76
_g	17.04	14.81	14.81	7.79	6.77	6.77	8.61	7.48	7.48
_h	18.17	15.80	15.80	8.30	7.22	7.22	9.18	7.98	7.98
_i	16.15	14.04	14.04	7.38	6.42	6.42	8.16	7.09	7.09
Leipzig									
_a	33.80	29.39	29.39	15.45	13.43	13.43	17.07	14.84	14.84
_b	33.16	28.84	28.84	15.15	13.18	13.18	16.75	14.56	14.56
_c	29.74	25.86	25.86	13.59	11.82	11.82	15.02	13.06	13.06
_d	23.87	20.76	20.76	10.91	9.49	9.49	12.05	10.48	10.48
_e	18.81	16.36	16.36	8.60	7.48	7.48	9.50	8.26	8.26
_f	18.64	16.21	16.21	8.52	7.41	7.41	9.41	8.19	8.19
_g	14.61	12.70	12.70	6.68	5.80	5.80	7.38	6.41	6.41
_h	16.49	14.34	14.34	7.54	6.55	6.55	8.33	7.24	7.24
_i	13.20	11.48	11.48	6.03	5.25	5.25	6.67	5.80	5.80
Rostock									
_a	41.46	36.05	36.05	18.95	16.47	16.47	20.94	18.21	18.21
_b	41.46	36.05	36.05	18.95	16.47	16.47	20.94	18.21	18.21
_c	33.42	29.06	29.06	15.27	13.28	13.28	16.88	14.68	14.68
_d	23.39	20.34	20.34	10.69	9.30	9.30	11.81	10.27	10.27
_e	19.21	16.70	16.70	8.78	7.63	7.63	9.70	8.43	8.43
_f	19.21	16.70	16.70	8.78	7.63	7.63	9.70	8.43	8.43
_g	16.55	14.39	14.39	7.56	6.58	6.58	8.36	7.27	7.27
_h	16.45	14.30	14.30	7.52	6.54	6.54	8.31	7.22	7.22
_i	14.27	12.41	12.41	6.52	5.67	5.67	7.21	6.27	6.27
GREECE									
Athens	GDR								
_a	30.86	26.15	26.15	12.25	10.38	10.38	9.94	8.42	8.42
_b	30.74	26.05	26.05	12.20	10.34	10.34	9.90	8.39	8.39
_c	28.38	24.05	24.05	11.27	9.55	9.55	9.14	7.74	7.74
_d	22.61	19.16	19.16	8.98	7.61	7.61	7.28	6.17	6.17
_e	20.92	17.73	17.73	8.31	7.04	7.04	6.74	5.71	5.71
_f	20.92	17.73	17.73	8.31	7.04	7.04	6.74	5.71	5.71
_g	17.77	15.06	15.06	7.05	5.98	5.98	5.72	4.85	4.85
_h	16.45	13.94	13.94	6.53	5.53	5.53	5.30	4.49	4.49
_i	14.42	12.22	12.22	5.72	4.85	4.85	4.64	3.93	3.93
SPAIN									
Madrid	ESP								
_a	21.09	18.18	18.18	15.40	13.27	13.27	12.63	10.89	10.89
_b	21.09	18.18	18.18	15.40	13.27	13.27	12.63	10.89	10.89
_c	16.00	13.79	13.79	11.68	10.07	10.07	9.58	8.26	8.26
_d	14.70	12.67	12.67	10.73	9.25	9.25	8.81	7.59	7.59
_e	13.34	11.50	11.50	9.74	8.40	8.40	7.99	6.89	6.89
_f	12.49	10.77	10.77	9.12	7.86	7.86	7.48	6.45	6.45
_g	11.24	9.69	9.69	8.21	7.07	7.07	6.73	5.80	5.80
_h	11.26	9.71	9.71	8.22	7.09	7.09	6.74	5.82	5.82
_i	10.27	8.85	8.85	7.50	6.46	6.46	6.15	5.30	5.30
_j	10.27	8.85	8.85	7.50	6.46	6.46	6.15	5.30	5.30

Electricity prices for industry



1 July 1997

	National currency (/ kWh)			PPS (/ 100 kWh)			ECUS (/ 100 kWh)		
	With taxes	VAT excl.	Taxes excl.	With taxes	VAT excl.	Taxes excl.	With taxes	VAT excl.	Taxes excl.
FRANCE	<i>1 / 100 FRF</i>								
Paris									
_a	80.79	66.99	60.59	11.55	9.58	8.66	12.12	10.05	9.09
_b	75.96	62.99	60.59	10.86	9.01	8.66	11.39	9.45	9.09
_c	69.96	58.01	55.80	10.00	8.30	7.98	10.49	8.70	8.37
_d	55.85	46.31	46.31	7.99	6.62	6.62	8.38	6.95	6.95
_e	47.43	39.33	39.33	6.78	5.62	5.62	7.11	5.90	5.90
_f	47.58	39.45	39.45	6.80	5.64	5.64	7.14	5.92	5.92
_g	41.11	34.09	34.09	5.88	4.87	4.87	6.17	5.11	5.11
_h	37.71	31.27	31.27	5.39	4.47	4.47	5.66	4.69	4.69
_i	33.90	28.11	28.11	4.85	4.02	4.02	5.09	4.22	4.22
Lille									
_a	80.09	66.41	60.59	11.45	9.50	8.66	12.01	9.96	9.09
_b	75.70	62.77	60.59	10.83	8.98	8.66	11.36	9.42	9.09
_c	69.72	57.81	55.80	9.97	8.27	7.98	10.46	8.67	8.37
_d	55.85	46.31	46.31	7.99	6.62	6.62	8.38	6.95	6.95
_e	47.43	39.33	39.33	6.78	5.62	5.62	7.11	5.90	5.90
_f	47.58	39.45	39.45	6.80	5.64	5.64	7.14	5.92	5.92
_g	41.11	34.09	34.09	5.88	4.87	4.87	6.17	5.11	5.11
_h	37.71	31.27	31.27	5.39	4.47	4.47	5.66	4.69	4.69
_i	33.90	28.11	28.11	4.85	4.02	4.02	5.09	4.22	4.22
Strasbourg									
_a	75.41	62.53	60.59	10.78	8.94	8.66	11.31	9.38	9.09
_b	73.95	61.32	60.59	10.57	8.77	8.66	11.09	9.20	9.09
_c	68.10	56.47	55.80	9.74	8.08	7.98	10.22	8.47	8.37
_d	55.85	46.31	46.31	7.99	6.62	6.62	8.38	6.95	6.95
_e	47.43	39.33	39.33	6.78	5.62	5.62	7.11	5.90	5.90
_f	47.58	39.45	39.45	6.80	5.64	5.64	7.14	5.92	5.92
_g	41.11	34.09	34.09	5.88	4.87	4.87	6.17	5.11	5.11
_h	37.71	31.27	31.27	5.39	4.47	4.47	5.66	4.69	4.69
_i	33.90	28.11	28.11	4.85	4.02	4.02	5.09	4.22	4.22
Lyons ¹									
_a	80.09	66.41	60.59	11.45	9.50	8.66	12.01	9.96	9.09
_b	75.70	62.77	60.59	10.83	8.98	8.66	11.36	9.42	9.09
_c	69.72	57.81	55.80	9.97	8.27	7.98	10.46	8.67	8.37
_d	55.85	46.31	46.31	7.99	6.62	6.62	8.38	6.95	6.95
_e	47.43	39.33	39.33	6.78	5.62	5.62	7.11	5.90	5.90
_f	47.58	39.45	39.45	6.80	5.64	5.64	7.14	5.92	5.92
_g	41.11	34.09	34.09	5.88	4.87	4.87	6.17	5.11	5.11
_h	37.71	31.27	31.27	5.39	4.47	4.47	5.66	4.69	4.69
_i	33.90	28.11	28.11	4.85	4.02	4.02	5.09	4.22	4.22
IRELAND	<i>1 / 100 IEP</i>								
Dublin									
_a	11.318	10.060	10.060	16.74	14.88	14.88	15.32	13.62	13.62
_b	11.185	9.942	9.942	16.54	14.70	14.70	15.14	13.46	13.46
_c	9.640	8.569	8.569	14.26	12.67	12.67	13.05	11.60	11.60
_d	7.142	6.348	6.348	10.56	9.39	9.39	9.67	8.60	8.60
_e	5.861	5.210	5.210	8.67	7.71	7.71	7.94	7.05	7.05
_f	5.472	4.864	4.864	8.09	7.19	7.19	7.41	6.59	6.59
_g	4.699	4.177	4.177	6.95	6.18	6.18	6.36	5.66	5.66
_h	4.730	4.204	4.204	7.00	6.22	6.22	6.40	5.69	5.69
_i	4.293	3.816	3.816	6.35	5.64	5.64	5.81	5.17	5.17

¹ Prices also valid for : Marseilles, Toulouse

Electricity prices for industry



1 July 1997

	National currency (/ kWh)			PPS (/ 100 kWh)			ECUS (/ 100 kWh)		
	With taxes	VAT excl.	Taxes excl.	With taxes	VAT excl.	Taxes excl.	With taxes	VAT excl.	Taxes excl.
ITALY									
National									
	<i>ITL</i>								
l _a	372.13	338.30	286.10	21.21	19.28	16.31	19.35	17.59	14.88
l _b	303.16	275.60	228.80	17.28	15.71	13.04	15.76	14.33	11.90
l _c	250.50	227.73	180.93	14.28	12.98	10.31	13.03	11.84	9.41
l _d	231.24	210.22	163.42	13.18	11.98	9.31	12.02	10.93	8.50
l _e	200.76	182.51	135.71	11.44	10.40	7.74	10.44	9.49	7.06
l _f	184.34	167.58	135.71	10.51	9.55	7.74	9.59	8.71	7.06
l _g	148.34	134.85	112.23	8.46	7.69	6.40	7.71	7.01	5.84
l _h	136.98	124.53	105.54	7.81	7.10	6.02	7.12	6.48	5.49
l _i	119.54	108.67	89.94	6.81	6.19	5.13	6.22	5.65	4.68
LUXEMBOURG									
National 50% ^{1 2}									
	<i>LUF</i>								
l _a	5.83	5.50	5.50	13.69	12.91	12.91	14.26	13.45	13.45
l _b	5.90	5.57	5.57	13.87	13.08	13.08	14.45	13.63	13.63
l _c	4.54	4.29	4.29	10.67	10.07	10.07	11.12	10.49	10.49
l _d	3.70	3.49	3.49	8.69	8.20	8.20	9.06	8.55	8.55
l _e	3.14	2.96	2.96	7.37	6.96	6.96	7.68	7.25	7.25
l _f	2.51	2.37	2.37	5.89	5.56	5.56	6.14	5.79	5.79
l _g	2.07	1.95	1.95	4.86	4.58	4.58	5.06	4.77	4.77
l _h	2.15	2.02	2.02	5.04	4.75	4.75	5.25	4.95	4.95
l _i	1.89	1.79	1.79	4.45	4.20	4.20	4.63	4.37	4.37
National 0% ¹									
l _a	7.33	6.91	6.91	17.22	16.24	16.24	17.94	16.93	16.93
l _b	7.28	6.87	6.87	17.10	16.13	16.13	17.82	16.81	16.81
l _c	4.54	4.29	4.29	10.67	10.07	10.07	11.12	10.49	10.49
l _d	4.26	4.02	4.02	10.00	9.44	9.44	10.43	9.84	9.84
l _e	3.49	3.29	3.29	8.19	7.73	7.73	8.54	8.05	8.05
l _f	2.51	2.37	2.37	5.89	5.56	5.56	6.14	5.79	5.79
l _g	2.07	1.95	1.95	4.86	4.58	4.58	5.06	4.77	4.77
l _h	2.15	2.02	2.02	5.04	4.75	4.75	5.25	4.95	4.95
l _i	1.89	1.79	1.79	4.45	4.20	4.20	4.63	4.37	4.37
National 100% ¹									
l _a	4.56	4.30	4.30	10.71	10.11	10.11	11.16	10.53	10.53
l _b	4.48	4.23	4.23	10.52	9.93	9.93	10.97	10.35	10.35
l _c	3.67	3.46	3.46	8.62	8.13	8.13	8.98	8.47	8.47
l _d	3.14	2.97	2.97	7.38	6.96	6.96	7.69	7.26	7.26
l _e	2.79	2.63	2.63	6.55	6.18	6.18	6.83	6.44	6.44
l _f	2.51	2.37	2.37	5.89	5.56	5.56	6.14	5.79	5.79
l _g	2.07	1.95	1.95	4.86	4.58	4.58	5.06	4.77	4.77
l _h	2.15	2.02	2.02	5.04	4.75	4.75	5.25	4.95	4.95
l _i	1.89	1.79	1.79	4.45	4.20	4.20	4.63	4.37	4.37
NETHERLANDS									
Rotterdam									
	<i>1 / 100 NLG</i>								
l _a	29.76	25.33	22.46	13.27	11.30	10.02	13.36	11.37	10.08
l _b	29.86	25.41	22.51	13.32	11.33	10.04	13.41	11.41	10.11
l _c	29.05	24.72	23.81	12.96	11.03	10.62	13.04	11.10	10.69
l _d	19.74	16.80	16.68	8.80	7.49	7.44	8.86	7.54	7.49
l _e	16.12	13.72	13.65	7.19	6.12	6.09	7.24	6.16	6.13
l _f	15.57	13.25	13.24	6.94	5.91	5.91	6.99	5.95	5.94
l _g	12.76	10.86	10.85	5.69	4.84	4.84	5.73	4.88	4.87
l _h	13.61	11.58	11.58	6.07	5.16	5.16	6.11	5.20	5.20
l _i	12.03	10.24	10.24	5.37	4.57	4.57	5.40	4.60	4.60

¹ Power reduction

² Taken for community comparison

Electricity prices for industry



1 July 1997

	National currency (/ kWh)			PPS (/ 100 kWh)			ECUS (/ 100 kWh)		
	With taxes	VAT excl.	Taxes excl.	With taxes	VAT excl.	Taxes excl.	With taxes	VAT excl.	Taxes excl.
NETHERLANDS									
North Holland									
<i>1 / 100 NLG</i>									
_a	26.70	22.72	19.85	11.91	10.13	8.85	11.99	10.20	8.91
_b	26.58	22.62	19.72	11.85	10.09	8.80	11.93	10.16	8.85
_c	25.51	21.71	20.80	11.38	9.68	9.28	11.45	9.75	9.34
_d	17.54	14.93	14.81	7.82	6.66	6.61	7.88	6.70	6.65
_e	14.66	12.48	12.41	6.54	5.57	5.53	6.58	5.60	5.57
_f	14.29	12.16	12.15	6.37	5.42	5.42	6.42	5.46	5.46
_g	12.17	10.36	10.35	5.43	4.62	4.62	5.46	4.65	4.65
_h	12.84	10.93	10.93	5.73	4.87	4.87	5.77	4.91	4.91
_i	11.37	9.68	9.68	5.07	4.32	4.32	5.11	4.35	4.35
North Brabant									
_a	24.44	20.80	17.93	10.90	9.28	8.00	10.97	9.34	8.05
_b	25.04	21.31	18.41	11.17	9.50	8.21	11.24	9.57	8.27
_c	21.84	18.59	17.68	9.74	8.29	7.89	9.81	8.35	7.94
_d	16.32	13.89	13.77	7.28	6.19	6.14	7.33	6.24	6.18
_e	13.71	11.67	11.60	6.11	5.20	5.17	6.16	5.24	5.21
_f	13.59	11.57	11.56	6.06	5.16	5.16	6.10	5.19	5.19
_g	12.11	10.31	10.30	5.40	4.60	4.59	5.44	4.63	4.62
_h	12.54	10.67	10.67	5.59	4.76	4.76	5.63	4.79	4.79
_i	11.62	9.89	9.89	5.18	4.41	4.41	5.22	4.44	4.44
AUSTRIA									
Oberösterreich/Tyrol/Wienna									
<i>ATS</i>									
_a	2.58	2.15	2.05	17.51	14.60	13.92	18.54	15.46	14.74
_b	2.80	2.33	2.23	18.99	15.82	15.15	20.10	16.76	16.04
_c	2.04	1.70	1.60	13.86	11.56	10.88	14.68	12.24	11.52
_d	1.69	1.40	1.30	11.43	9.52	8.85	12.10	10.08	9.37
_e	1.38	1.15	1.05	9.39	7.82	7.14	9.94	8.28	7.56
_f	1.35	1.13	1.03	9.17	7.64	6.97	9.71	8.09	7.38
_g	1.20	1.00	0.90	8.14	6.78	6.10	8.62	7.18	6.46
_h	1.18	0.99	0.89	8.02	6.68	6.00	8.49	7.07	6.36
_i	1.07	0.89	0.79	7.27	6.06	5.38	7.70	6.41	5.70
PORTUGAL									
Lisbon									
<i>PTE</i>									
_a	23.790	22.660	22.640	17.77	16.93	16.91	11.90	11.33	11.32
_b	24.690	23.520	23.500	18.44	17.57	17.55	12.35	11.76	11.75
_c	20.260	19.290	19.290	15.13	14.41	14.41	10.13	9.65	9.65
_d	17.310	16.490	16.490	12.93	12.32	12.32	8.66	8.25	8.25
_e	15.330	14.600	14.600	11.45	10.91	10.91	7.67	7.30	7.30
_f	15.330	14.600	14.600	11.45	10.91	10.91	7.67	7.30	7.30
_g	12.520	11.930	11.930	9.35	8.91	8.91	6.26	5.97	5.97
_h	11.450	10.900	10.900	8.55	8.14	8.14	5.73	5.45	5.45
_i	10.530	10.030	10.030	7.87	7.49	7.49	5.27	5.02	5.02
San Miguel Azores									
_a	34.210	32.890	32.890	25.55	24.57	24.57	17.11	16.45	16.45
_b	34.210	32.890	32.890	25.55	24.57	24.57	17.11	16.45	16.45
_c	29.990	28.840	28.840	22.40	21.54	21.54	15.00	14.42	14.42
_d	26.770	25.740	25.740	20.00	19.23	19.23	13.39	12.87	12.87
_e	24.380	23.440	23.440	18.21	17.51	17.51	12.19	11.72	11.72
_f	23.670	22.760	22.760	17.68	17.00	17.00	11.84	11.38	11.38
_g	:	:	:	:	:	:	:	:	:
_h	:	:	:	:	:	:	:	:	:
_i	:	:	:	:	:	:	:	:	:

Electricity prices for industry



1 July 1997

	National currency (/ kWh)			PPS (/ 100 kWh)			ECUS (/ 100 kWh)		
	With taxes	VAT excl.	Taxes excl.	With taxes	VAT excl.	Taxes excl.	With taxes	VAT excl.	Taxes excl.
FINLAND									
National	<i>1 / 100 FIN</i>								
_a	44.00	36.00	34.50	6.69	5.47	5.24	7.48	6.12	5.87
_b	44.20	36.20	34.70	6.72	5.50	5.27	7.51	6.15	5.90
_c	41.40	33.90	32.40	6.29	5.15	4.92	7.04	5.76	5.51
_d	36.10	29.60	28.10	5.49	4.50	4.27	6.14	5.03	4.78
_e	31.10	25.50	24.00	4.73	3.88	3.65	5.29	4.34	4.08
_f	31.40	25.70	24.20	4.77	3.91	3.68	5.34	4.37	4.11
_g	27.80	22.80	21.30	4.23	3.47	3.24	4.73	3.88	3.62
_h	25.30	20.70	19.20	3.85	3.15	2.92	4.30	3.52	3.26
_i	:	:	:	:	:	:	:	:	:
SWEDEN									
National	<i>1 / 100 SEK</i>								
_a	77.75	62.20	62.20	7.23	5.78	5.78	9.02	7.22	7.22
_b	74.63	59.70	59.70	6.94	5.55	5.55	8.66	6.93	6.93
_c	67.25	53.80	53.80	6.25	5.00	5.00	7.80	6.24	6.24
_d	57.13	45.70	45.70	5.31	4.25	4.25	6.63	5.30	5.30
_e	45.50	36.40	36.40	4.23	3.39	3.39	5.28	4.22	4.22
_f	41.00	32.80	32.80	3.81	3.05	3.05	4.76	3.80	3.80
_g	37.88	30.30	30.30	3.52	2.82	2.82	4.39	3.51	3.51
_h	37.50	30.00	30.00	3.49	2.79	2.79	4.35	3.48	3.48
_i	35.25	28.20	28.20	3.28	2.62	2.62	4.09	3.27	3.27
UNITED KINGDOM,									
London	<i>1 / 100 GBP</i>								
_a	8.716	7.418	7.418	12.47	10.62	10.62	13.19	11.22	11.22
_b	8.141	6.929	6.929	11.65	9.92	9.92	12.32	10.48	10.48
_c	6.702	5.704	5.704	9.59	8.16	8.16	10.14	8.63	8.63
_d	5.162	4.393	4.393	7.39	6.29	6.29	7.81	6.65	6.65
_e	4.606	3.920	3.920	6.59	5.61	5.61	6.97	5.93	5.93
_f	4.285	3.647	3.647	6.13	5.22	5.22	6.48	5.52	5.52
_g	:	:	:	:	:	:	:	:	:
_h	:	:	:	:	:	:	:	:	:
_i	:	:	:	:	:	:	:	:	:
Leeds									
_a	7.508	6.390	6.390	10.74	9.14	9.14	11.36	9.67	9.67
_b	7.379	6.280	6.280	10.56	8.99	8.99	11.16	9.50	9.50
_c	6.865	5.843	5.843	9.82	8.36	8.36	10.39	8.84	8.84
_d	:	:	:	:	:	:	:	:	:
_e	4.585	3.902	3.902	6.56	5.58	5.58	6.94	5.90	5.90
_f	:	:	:	:	:	:	:	:	:
_g	:	:	:	:	:	:	:	:	:
_h	:	:	:	:	:	:	:	:	:
_i	:	:	:	:	:	:	:	:	:
Birmingham									
_a	8.554	7.280	7.280	12.24	10.42	10.42	12.94	11.01	11.01
_b	8.495	7.230	7.230	12.16	10.35	10.35	12.85	10.94	10.94
_c	6.918	5.888	5.888	9.90	8.43	8.43	10.47	8.91	8.91
_d	5.706	4.856	4.856	8.17	6.95	6.95	8.63	7.35	7.35
_e	4.814	4.097	4.097	6.89	5.86	5.86	7.28	6.20	6.20
_f	4.194	3.569	3.569	6.00	5.11	5.11	6.35	5.40	5.40
_g	:	:	:	:	:	:	:	:	:
_h	:	:	:	:	:	:	:	:	:
_i	:	:	:	:	:	:	:	:	:

Electricity prices for industry



1 July 1997

	National currency (/ kWh)			PPS (/ 100 kWh)			ECUS (/ 100 kWh)		
	With taxes	VAT excl.	Taxes excl.	With taxes	VAT excl.	Taxes excl.	With taxes	VAT excl.	Taxes excl.
UNITED KINGDOM									
Glasgow	1 / 100 GBP								
a	9.259	7.880	7.880	13.25	11.28	11.28	14.01	11.92	11.92
b	8.977	7.640	7.640	12.85	10.93	10.93	13.58	11.56	11.56
c	:	:	:	:	:	:	:	:	:
d	:	:	:	:	:	:	:	:	:
e	:	:	:	:	:	:	:	:	:
f	:	:	:	:	:	:	:	:	:
g	:	:	:	:	:	:	:	:	:
h	:	:	:	:	:	:	:	:	:
i	:	:	:	:	:	:	:	:	:
NORWAY ¹									
National	1 / 100 NOK								
a	45.50	37.00	37.00	4.60	3.74	3.74	5.55	4.51	4.51
b	43.90	35.70	35.70	4.43	3.61	3.61	5.36	4.36	4.36
c	49.30	40.10	40.10	4.98	4.05	4.05	6.01	4.89	4.89
d	41.60	33.80	33.80	4.20	3.41	3.41	5.08	4.12	4.12
e	35.50	28.90	28.90	3.59	2.92	2.92	4.33	3.53	3.53
f	31.70	25.80	25.80	3.20	2.61	2.61	3.87	3.15	3.15
g	25.50	20.70	20.70	2.58	2.09	2.09	3.11	2.53	2.53
h	25.00	20.30	20.30	2.53	2.05	2.05	3.05	2.48	2.48
i	23.90	19.40	19.40	2.41	1.96	1.96	2.92	2.37	2.37

¹ In the framework of the agreements concluded between the member countries of the European Economic Agreement (EEA), prices for Norway are also published

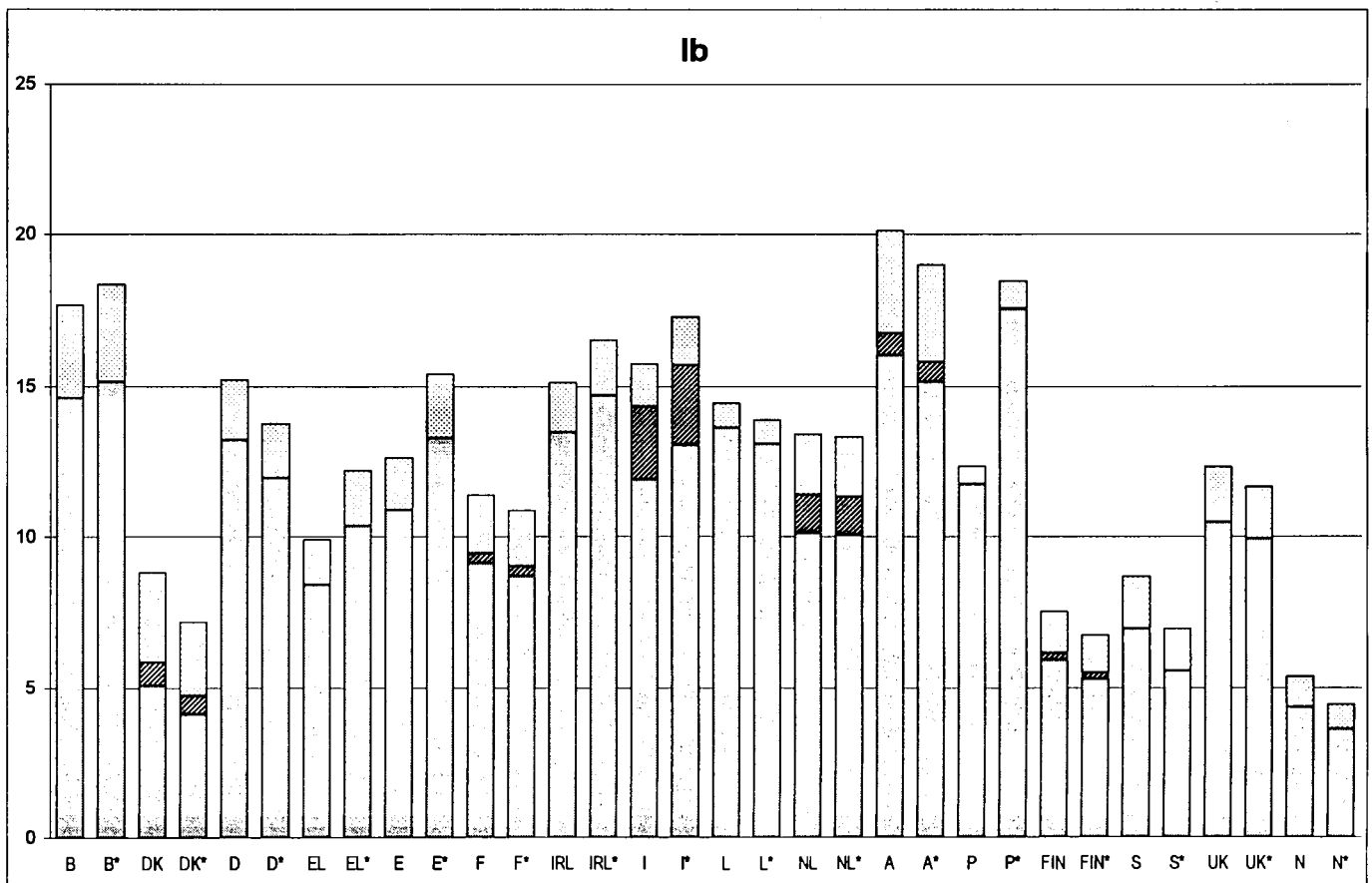
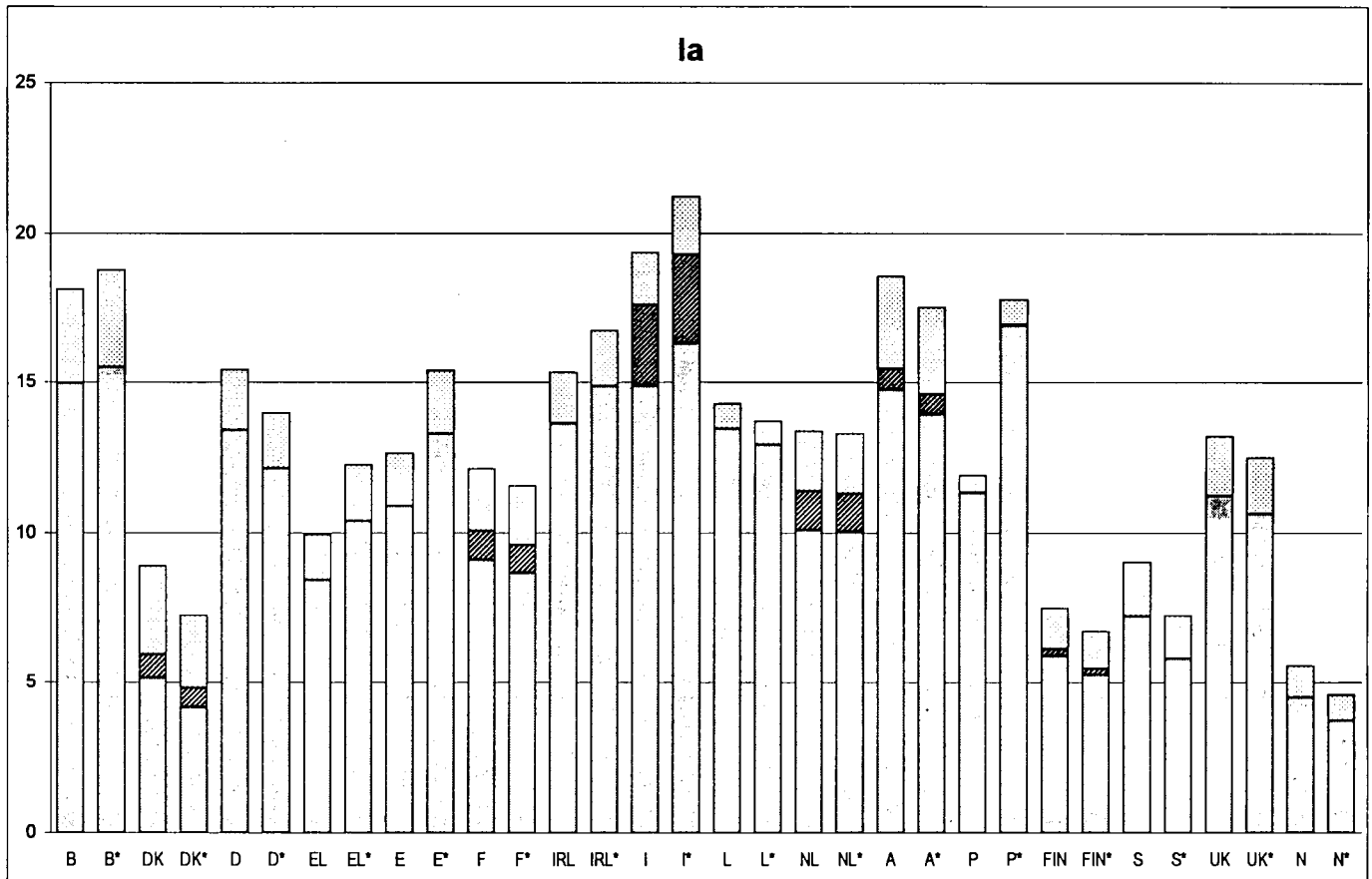
Electricity prices for industry

ECU / 100 kWh

* PPS / 100 kWh



1997-2



B BELGIQUE National	E MADRID	L LUXEMBOURG	FIN FINLAND National
DK DANMARK National	F PARIS	NL ROTTERDAM	S SVERIGE
D DUESSELDORF	IRL DUBLIN	A ÖSTERREICH	UK LONDON
EL ATHINA	I ITALIE National	P LISBOA	N NORGE

VAT

Other taxes

Taxes excluded

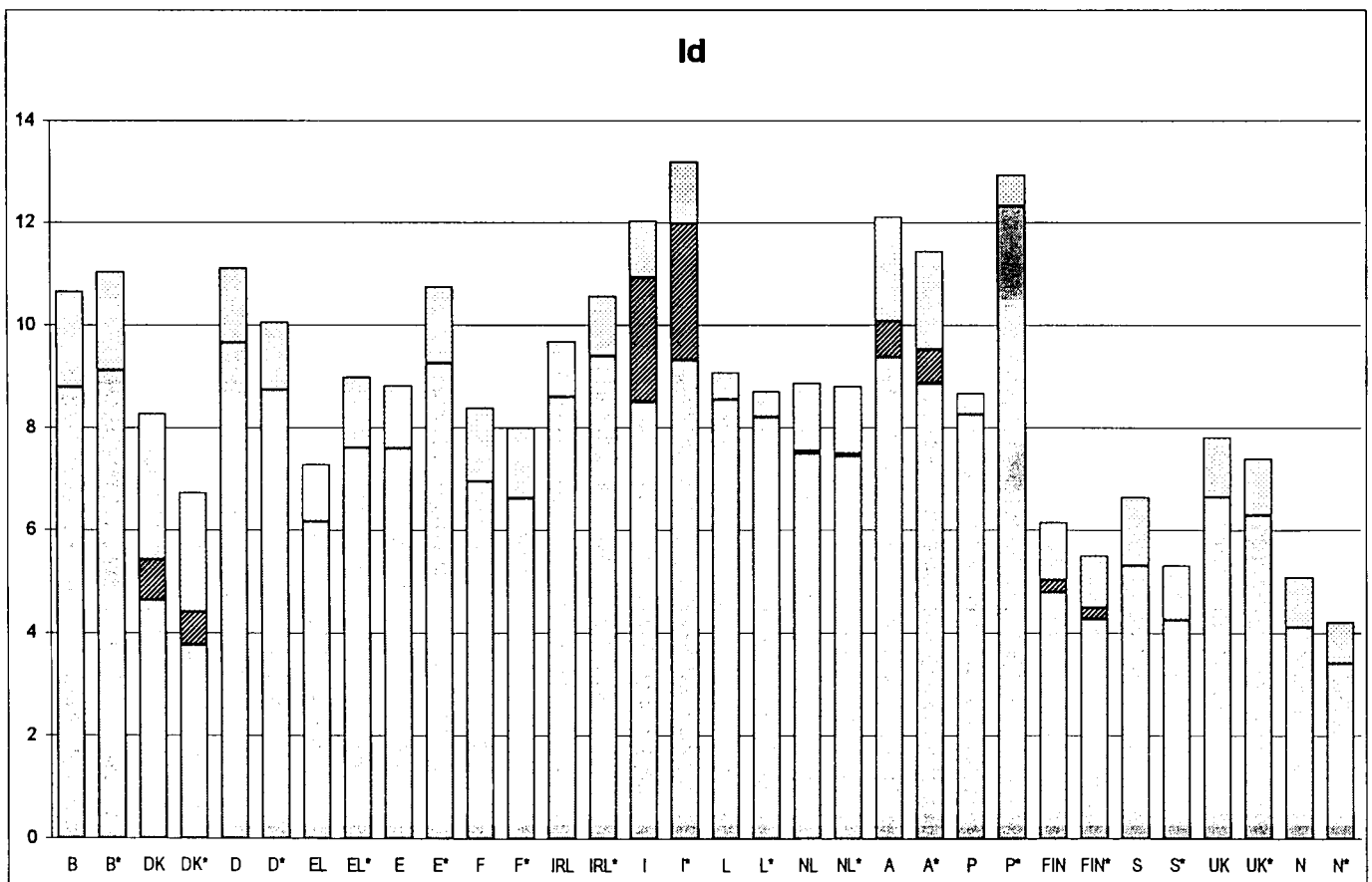
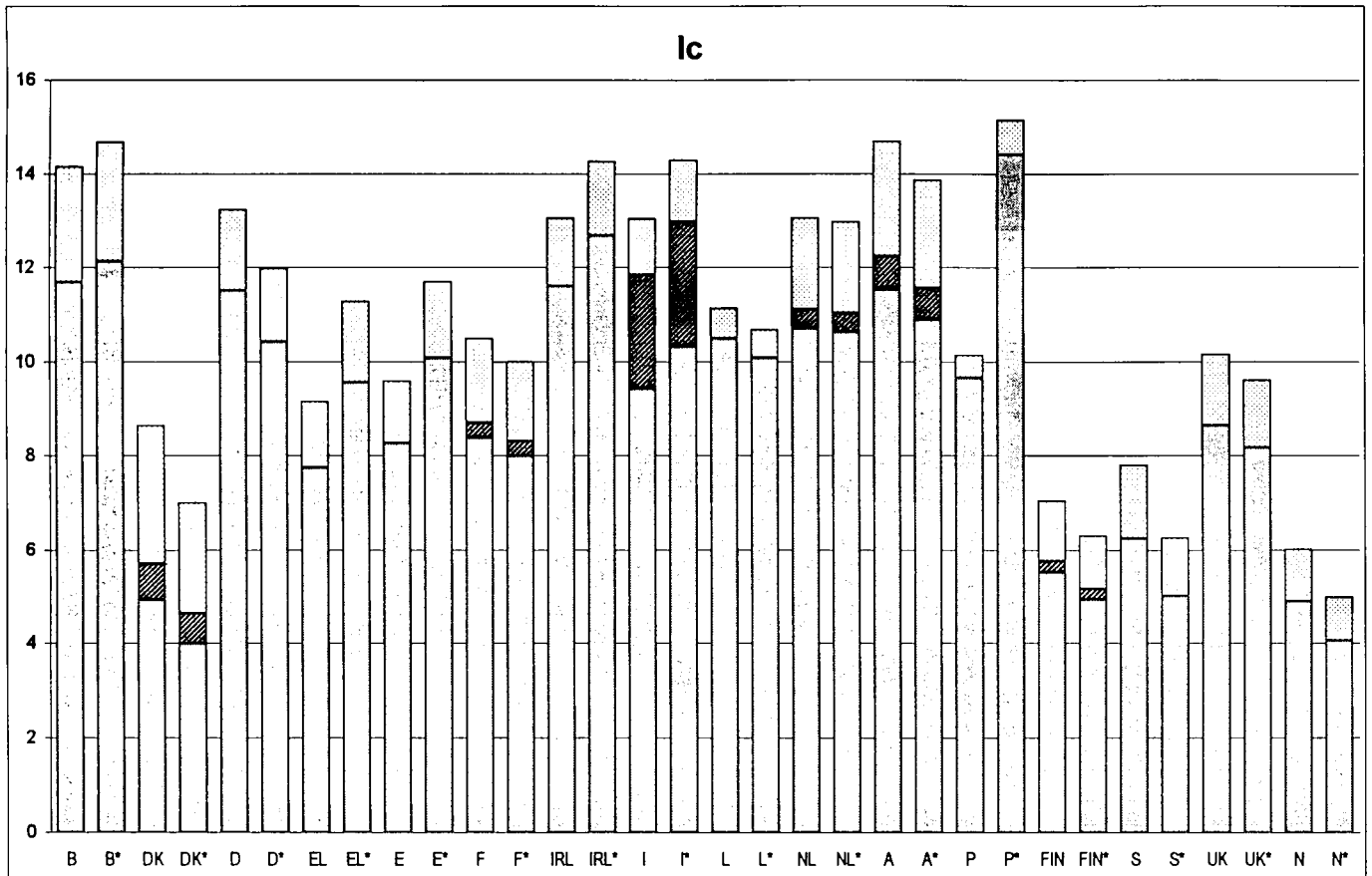
Electricity prices for industry

ECU / 100 kWh

* PPS / 100 kWh



1997-2



B BELGIQUE National
 DK DANMARK National
 D DUESSELDORF
 EL ATHINAI

E MADRID
 F PARIS
 IRL DUBLIN
 I ITALIE National

L LUXEMBOURG
 NL ROTTERDAM
 A ÖSTERREICH
 P LISBOA

FIN FINLAND National
 S SVERIGE
 UK LONDON
 N NORGE

VAT
 Other taxes
 Taxes excluded

Electricity prices for industry

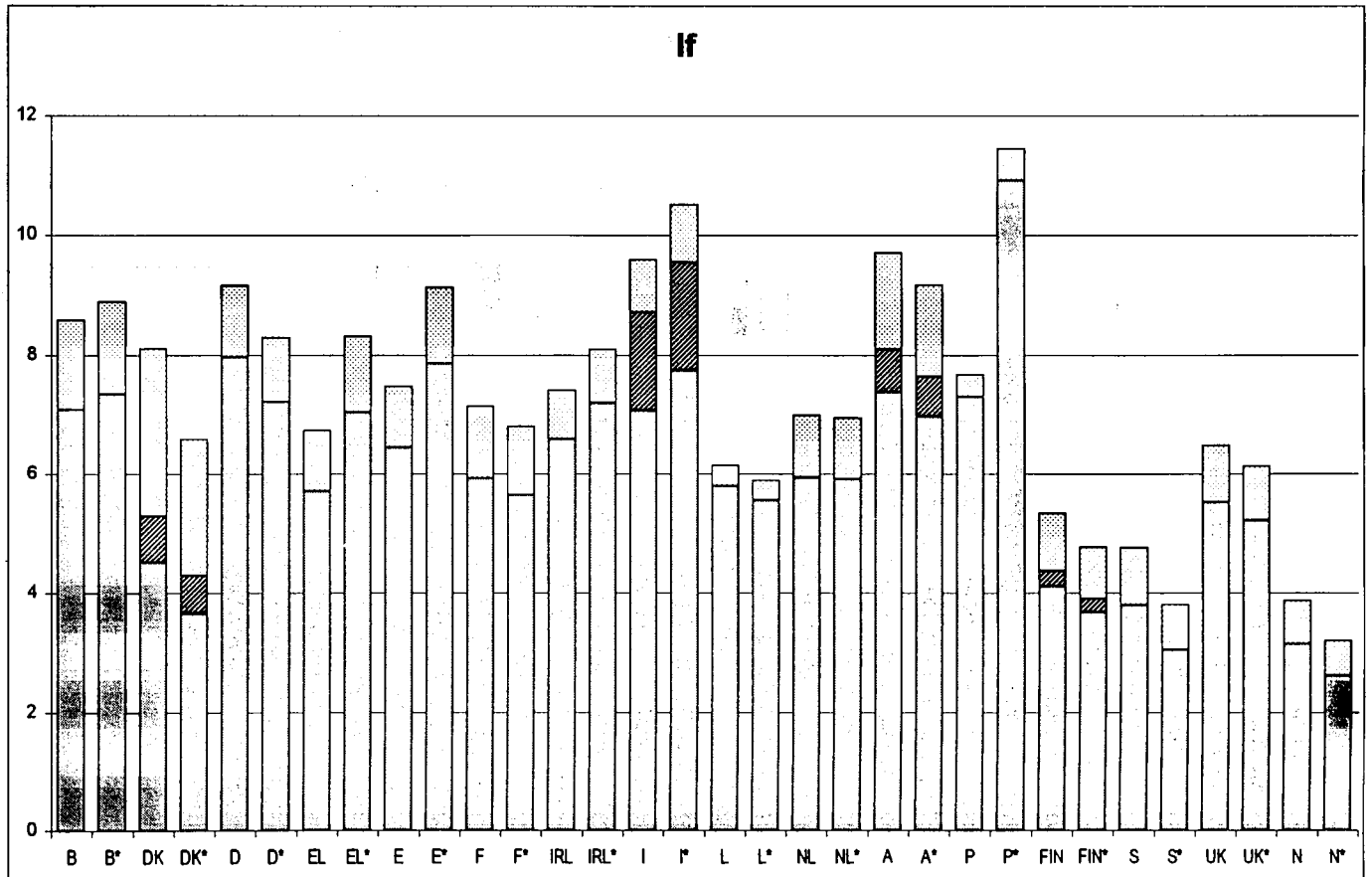
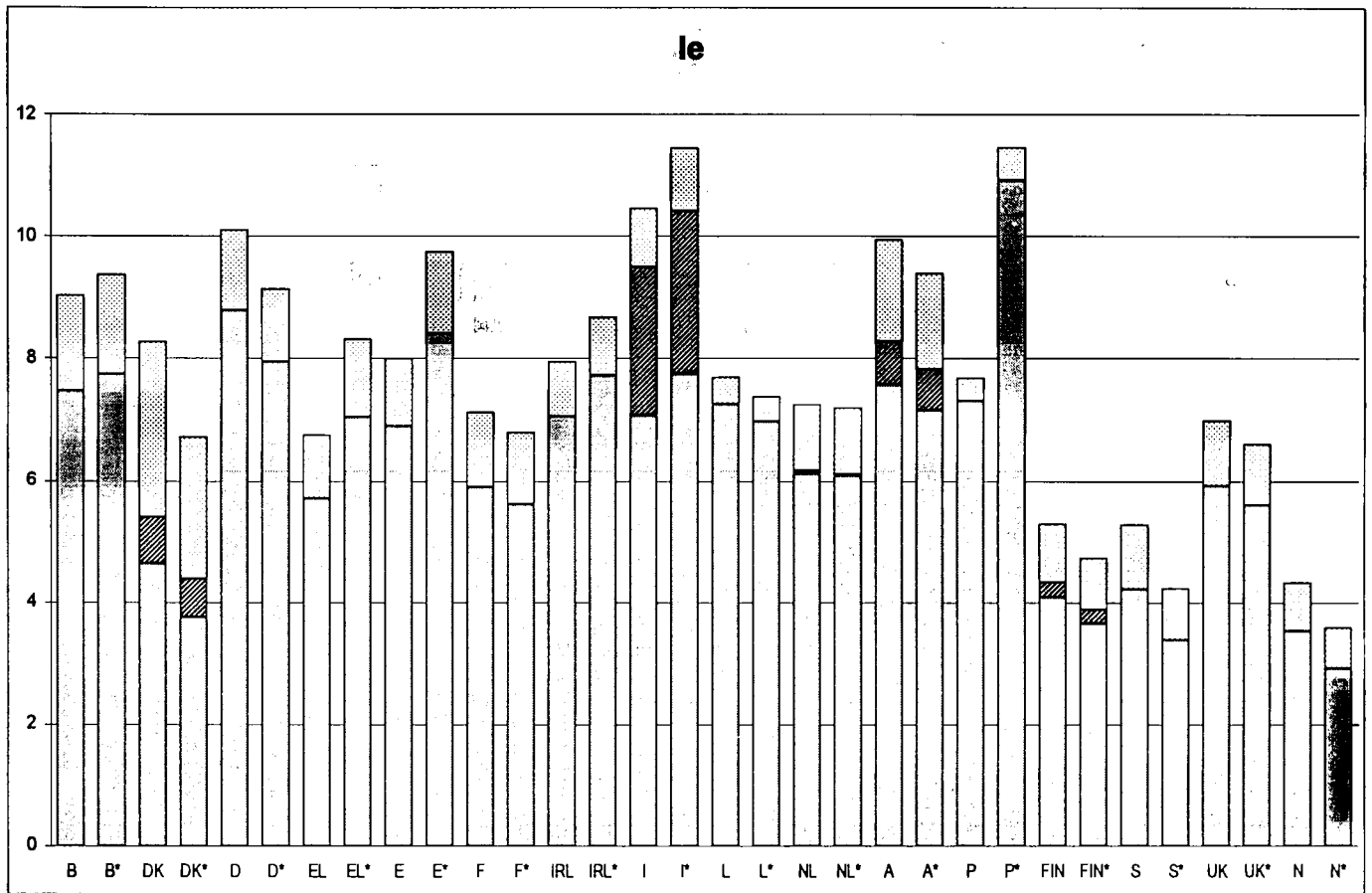
ECU / 100 kWh

* PPS / 100 kWh

1997-2



1997-2



- | | | | |
|---------------------|-------------------|--------------|----------------------|
| B BELGIQUE National | E MADRID | L LUXEMBOURG | FIN FINLAND National |
| DK DANMARK National | F PARIS | NL ROTTERDAM | S SVERIGE |
| D DUESSELDORF | IRL DUBLIN | A ÖSTERREICH | UK LONDON |
| EL ATHINA | I ITALIE National | P LISBOA | N NORGE |

VAT	
Other taxes	
Taxes excluded	

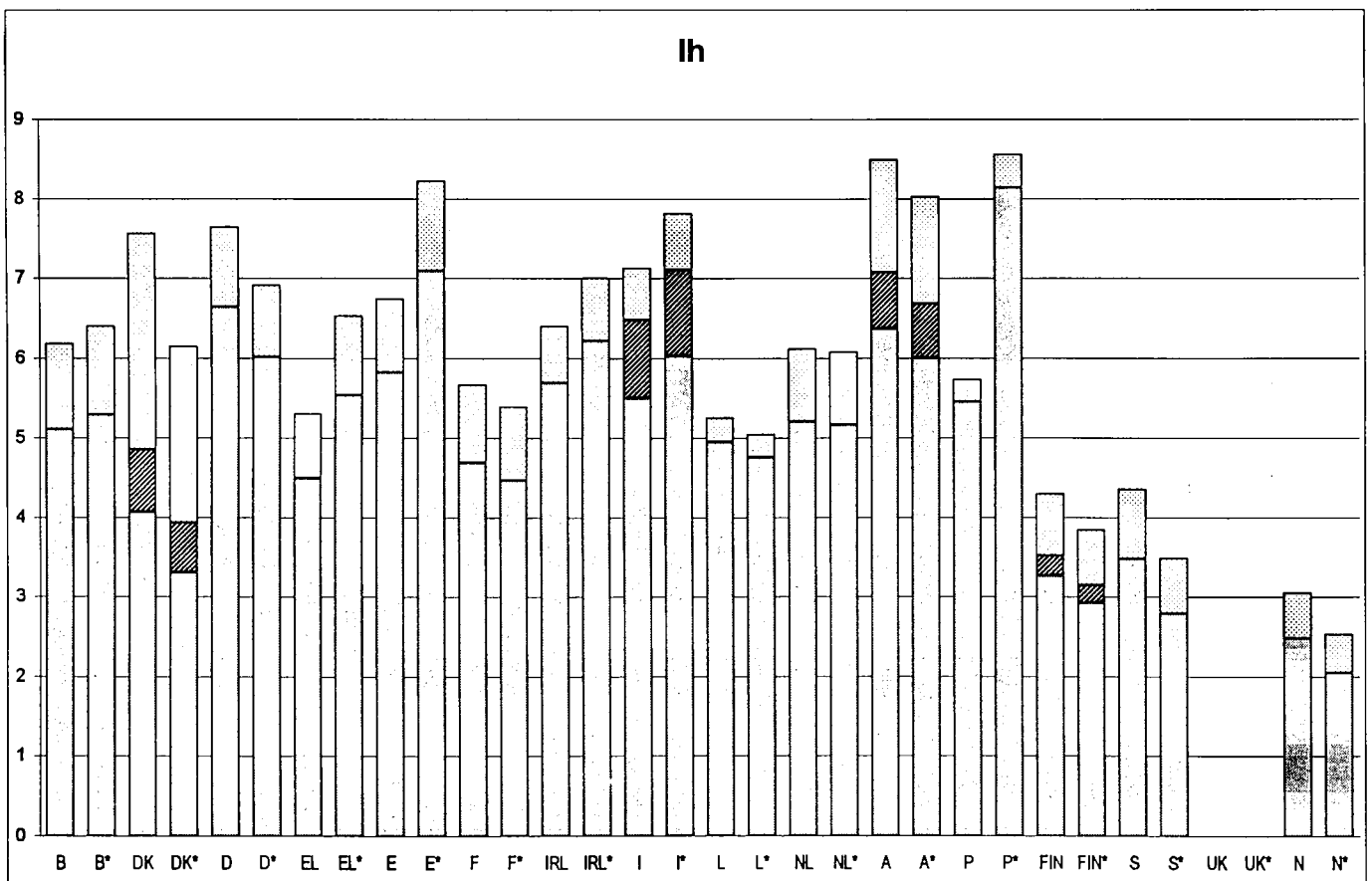
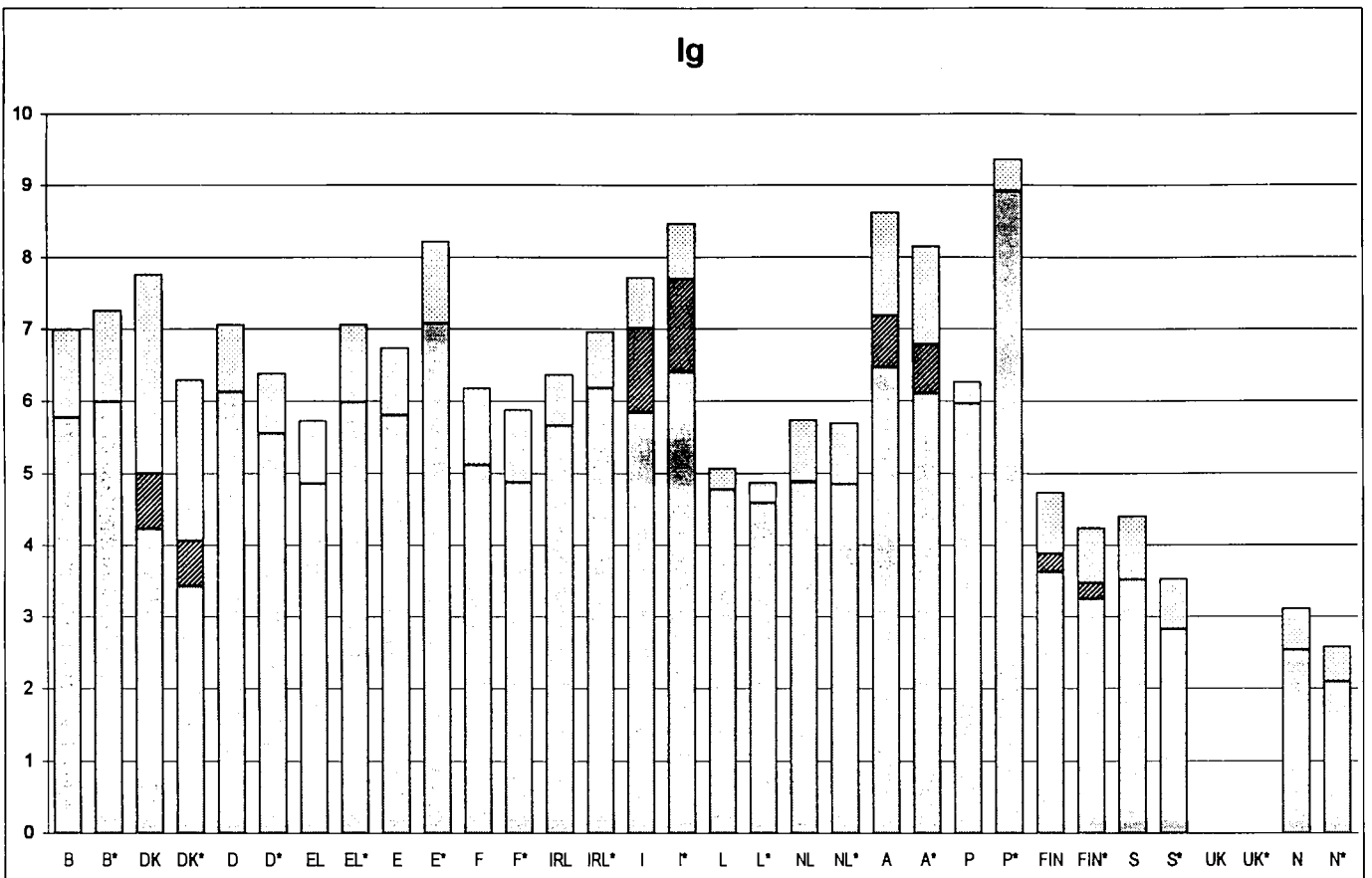
Electricity prices for industry

ECU / 100 kWh

* PPS / 100 kWh



1997-2



B BELGIQUE National	E MADRID	L LUXEMBOURG	FIN FINLAND National
DK DANMARK National	F PARIS	NL ROTTERDAM	S SVERIGE
D DUESSELDORF	IRL DUBLIN	A ÖSTERREICH	UK LONDON
EL ATHINAI	I ITALIE National	P LISBOA	N NORGE

VAT

Other taxes

Taxes excluded

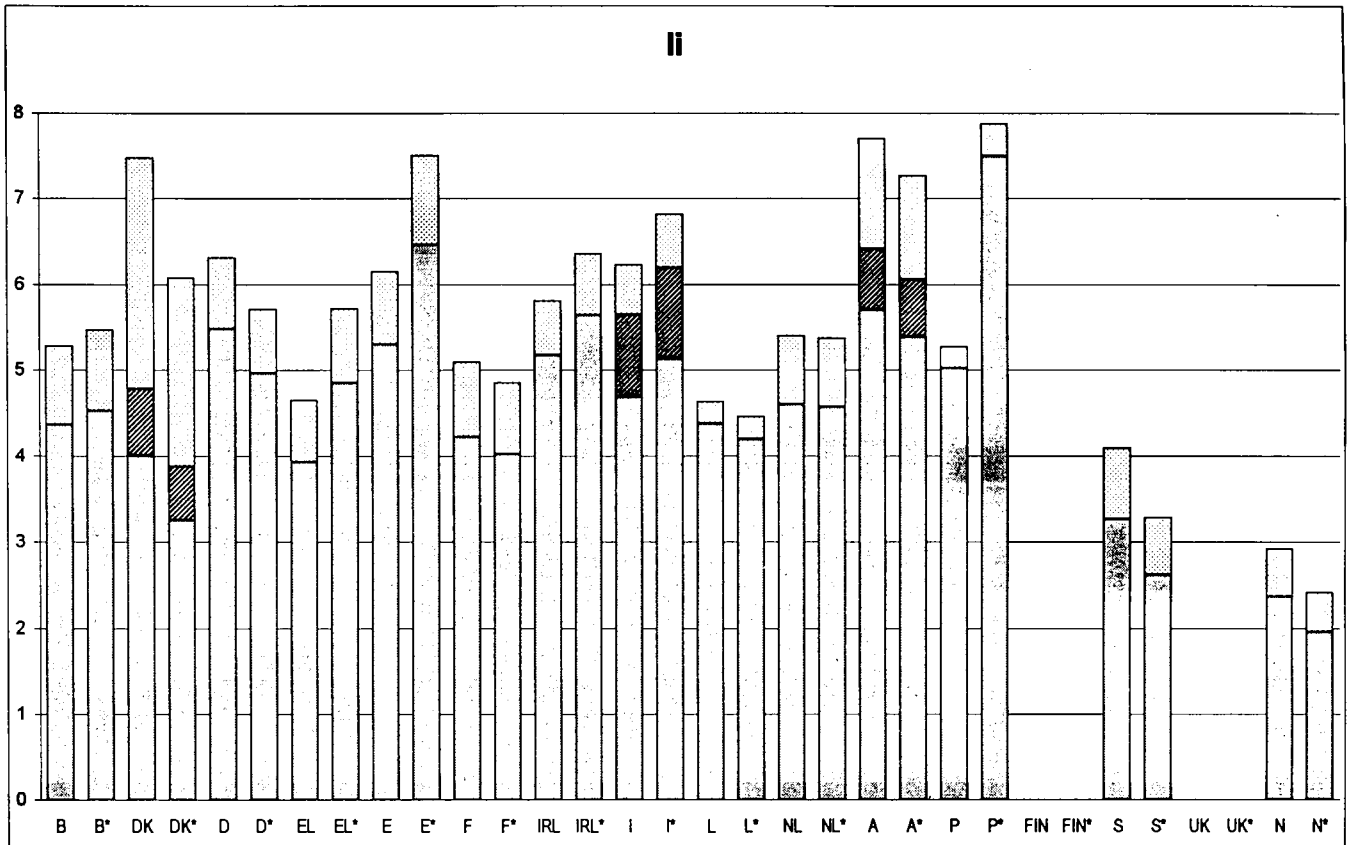
Electricity prices for industry

ECU / 100 kWh

* PPS / 100 kWh



1997-2



B BELGIQUE National
 DK DANMARK National
 D DUESSELDORF
 EL ATHINAI

E MADRID
 F PARIS
 IRL DUBLIN
 I ITALIE National


L LUXEMBOURG
 NL ROTTERDAM
 A ÖSTERREICH
 P LISBOA

FIN FINLAND National
 S SVERIGE
 UK LONDON
 N NORGE

VAT
 Other taxes
 Taxes excluded

Council Directive No 90/377/EEC of 29 June 1990 lays down a Community procedure to improve the transparency of gas and electricity prices charged to industrial end-users. In accordance with Article 1.1, this note sets out the prices for standard consumers and the "marker prices" in force as at 1 July 1997.

Nine standard industrial users, coded I_a to I_i were chosen:

Standard consumer 	Annual consumption (kWh)	Maximum demand (kW)	Annual utilisation (in hours)
I _a	30 000	30	1 000
I _b	50 000	50	1 000
I _c	160 000	100	1 600
I _d	1 250 000	500	2 500
I _e	2 000 000	500	4 000
I _f	10 000 000	2 500	4 000
I _g	24 000 000	4 000	6 000
I _h	50 000 000	10 000	5 000
I _i	70 000 000	10 000	7 000

Prices for the standard consumers are given in national currencies, PPS (estimated purchasing power standard, annual estimated value, as at 3 March for 1997) and in ECU (average value for July 1997).

Conversion table in PPS and ECU

1 PPS =

B (BEF) 39.40	E (ESP) 136.94	L (LUF) 42.58	FIN (FIM) 6.56
DK (DKK) 9.25	F (FRF) 6.98	NL (NLG) 2.24	S (SEK) 10.81
D (DEM) 2.19	IRL (IEP) 0.68	A (ATS) 14.74	UK (GBP) 0.70
EL (GRD) 251.61	I (ITL) 1741.21	P (PTE) 133.84	N (NOK) 9.89

1 ECU =

B (BEF) 40.85	E (ESP) 166.90	L (LUF) 40.85	FIN (FIM) 5.86
DK (DKK) 7.54	F (FRF) 6.67	NL (NLG) 2.23	S (SEK) 8.63
D (DEM) 1.98	IRL (IEP) 0.74	A (ATS) 13.92	UK (GBP) 0.66
EL (GRD) 310.43	I (ITL) 1926.48	P (PTE) 199.78	N (NOK) 8.22

Eurostat Data Shops

BELGIQUE/BELGIË

Eurostat Data Shop Brussels
Tel.: +32-2-299 66 66
Fax: +32-2-295 01 25
E-mail:
Piera.Calcinaghi@eurostat.cec.be

ESPAÑA

INE
Data Shop Eurostat
Tel.: +34-1-583 91 67
Fax: +34-1-583 46 99
E-mail: datashop@mundiprensa.es

ITALIA — Roma

ISTAT
Centro di Informazione Statistica —
Sede di Roma
Data Shop Eurostat
Tel.: +39-6-46 73 31 05/02
Fax: +39-6-46 73 31 07/01
E-mail: dipdiff@istat.it

ITALIA — Milano

ISTAT
Centro di Informazione Statistica —
Sede di Milano
Data Shop Eurostat
Tel.: +39-2-65 95 133/134
Fax: +39-2-65 30 75

UNITED KINGDOM

ONS Sales Office
Eurostat Data Shop (European Desk)
Office for national statistics
Tel.: +44-171-533 5676
Fax: +44-171-533 5689
E-mail: gloria.ryan@ons.gov.uk

DANMARK

Danmark Statistiks
Bibliotek og Information
Eurostat Data Shop
Tel.: +45 39 17 30 30
Fax: +45 39 17 30 03
E-mail: bib@dst.dk

FRANCE

INSEE Info Service
Data Shop Eurostat
Tel.: +33-1-53 17 88 44
Fax: +33-1-53 17 88 22

LUXEMBOURG

Eurostat Data Shop Luxembourg
Tel.: +352-43 35 22 51
Fax: +352-43 35 22 221/245
E-mail: agnesn@eurostat.datashop.lu

USA

Haver analytics
Eurostat Data Shop
Tel.: +1-212-986 9300
Fax: +1-212-986 5857
E-mail: eurodata@haver.com

Eurostat homepage: <http://europa.eu.int/eurostat.html>

Sales offices (EUR-OP)

BELGIQUE/BELGIË — DANMARK — DEUTSCHLAND — GRÈCE/ELLADA — FRANCE — IRELAND —
ITALIA — GRAND-DUCHÉ DE LUXEMBOURG — NEDERLAND — OSTERREICH — PORTUGAL —
SUOMI /FINLAND — SVERIGE — UNITED KINGDOM — ICELAND — NORWAY — SWITZERLAND —
ČESKÁ REPUBLIKA — CYPRUS — MAGYARORSZÁG — MALTA — POLSKA — TÜRKIYE — BÄLGARIJA —
HRVATSKA — ROMÂNIA — SLOVAKIA — SLOVENIA — ISRAEL — RUSSIA — AUSTRALIA — CANADA —
EGYPT — JAPAN — SOUTH AFRICA — UNITED STATES OF AMERICA — MÉXICO — KOREAN REPUBLIC

A worldwide list of our sales agents is available from the
Office for Official Publications of the European Communities
2 rue Mercier — L-2985 Luxembourg
tel. +352-2929-1 — fax. +352-2929 42658
Internet address:
http://eur-op.eu.int/_en/general/s-ad.htm