



# Unemployment

4  1998 Monthly

2 April 1998

## UNEMPLOYMENT IN THE EUROPEAN UNION

### February 1998

**Eurostat estimates that the seasonally-adjusted unemployment rate in the European Union was 10.3% at the end of February 1998, 0.1% lower than in the previous two months and 0.4% lower than in February 1997.**

Having remained fairly steady between 10.7% and 10.9% from November 1994 to June 1997, the EU unemployment rate has now dropped 0.4% in the last eight months.

During this period, unemployment among young persons has fallen by 1.4% (reaching 20% in February 1998), with decreases of over 2% in Sweden, the United Kingdom, Luxembourg, France, Spain and Ireland.

During the last eight months, the unemployment rate for men aged 25 and over has fallen 0.3% (to 7.6% in February 1998), with particularly large decreases in Spain, the United Kingdom, the Netherlands and Denmark.

The unemployment rate for women aged 25 and over, on the other hand, has remained fairly stationary at about 10.7%.

STATISTICAL OFFICE OF THE EUROPEAN COMMUNITIES

L-2920 Luxembourg — Tél. 4301-1 — Télex COMEUR LU 3423  
B-1049 Bruxelles, rue de la Loi 200 — Tél. 299 11 11

The **unemployment data** presented in this bulletin are in line with definitions and recommendations of the International Labour Office. The figures have been estimated by Eurostat on the basis of the European Labour Force Survey and can be used for international comparisons.

In the third month of each quarter, the bulletin contains a 4-page **supplement on short-term employment trends**.

Detailed information on methods and sources can be found at the end of the sections on unemployment and employment.

**For further information :**

A. Persenaire	tel. +352 4301-32005
J. Recktenwald	tel. +352 4301-34103
R. Brandenbourger	tel. +352 4301-33272

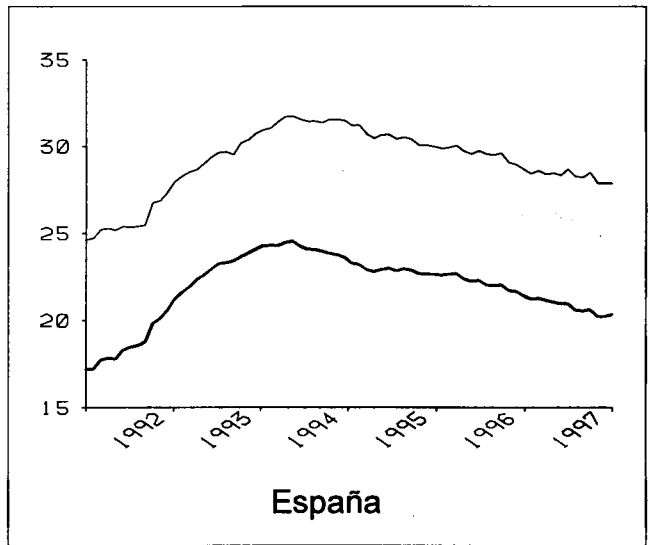
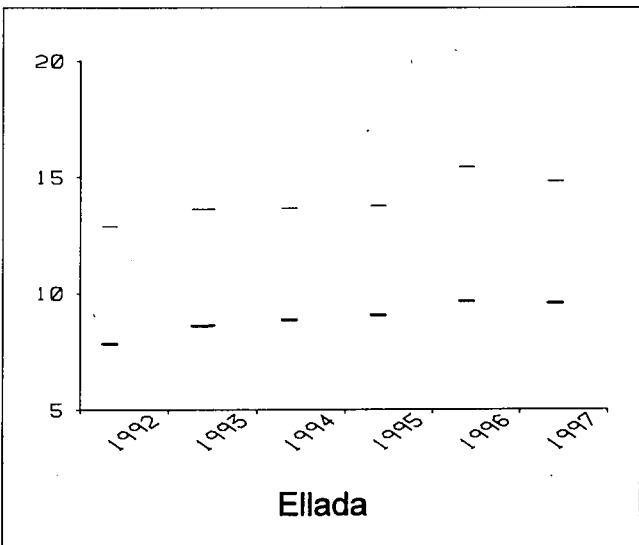
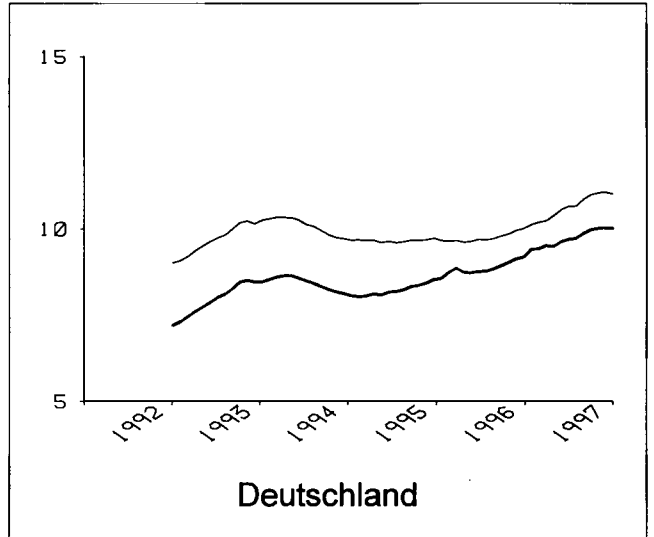
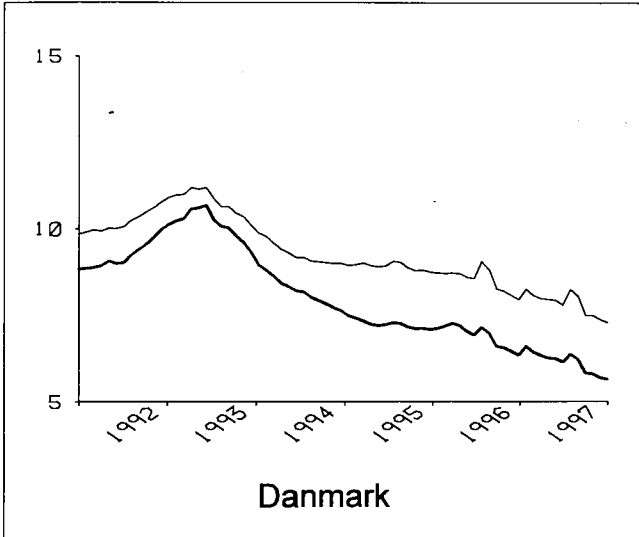
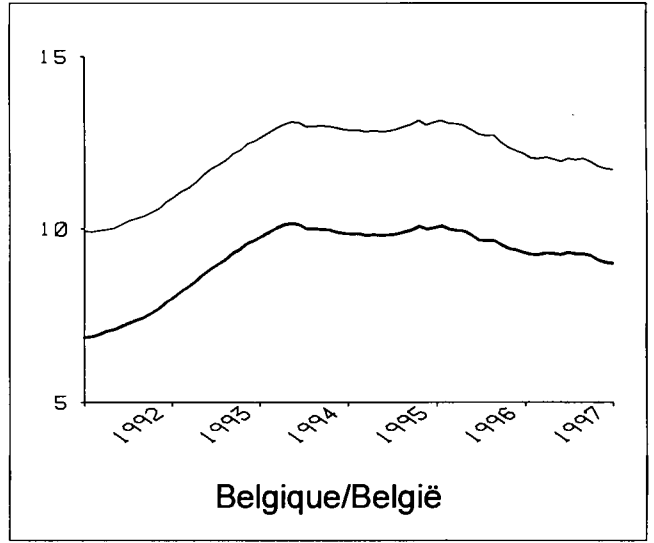
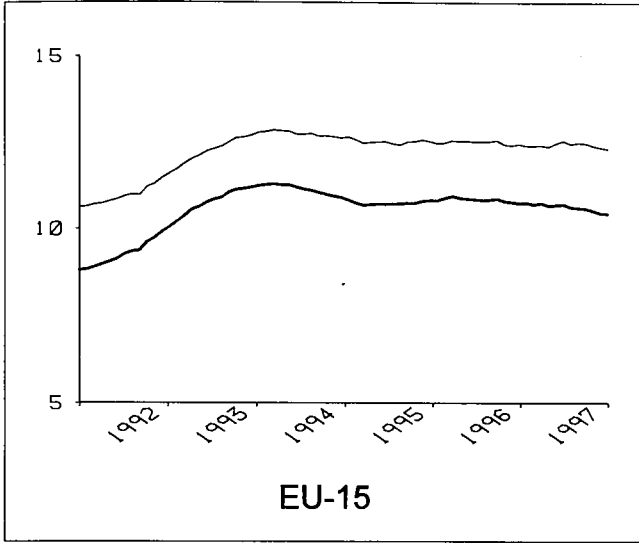
**Table of contents :**

Unemployment rates, seasonally adjusted :	
- graphs.....	3-5
- tables .....	6-7
Unemployment rates, not seasonally adjusted.....	8-9
Unemployment rates, annual averages.....	10-11
Number of unemployed, annual averages.....	12
Methodological notes (unemployment).....	13-14

**Signs and abbreviations :**

EU-15	All Member States of the European Union
T	Total
F	Females
< 25	Persons aged under 25
:	Data not available

# Unemployment rates, seasonally adjusted (%)

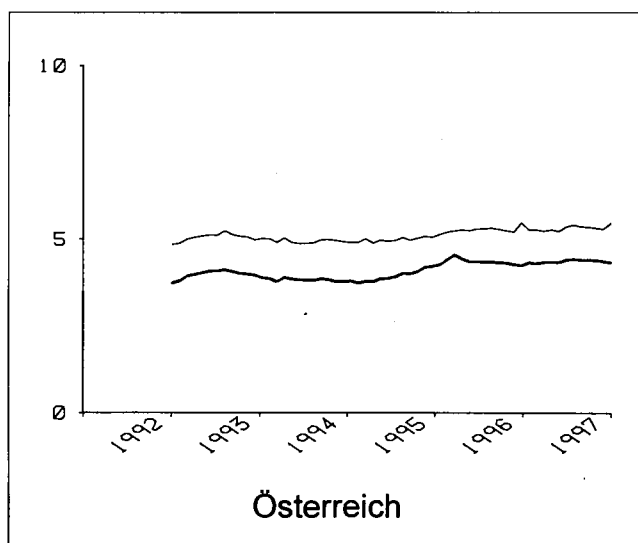
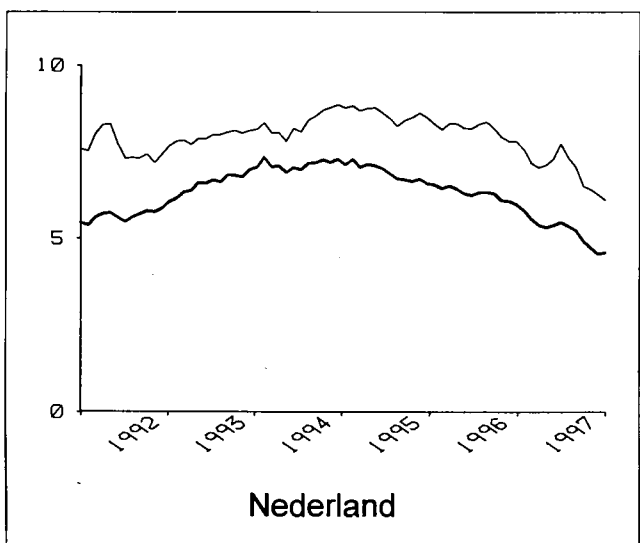
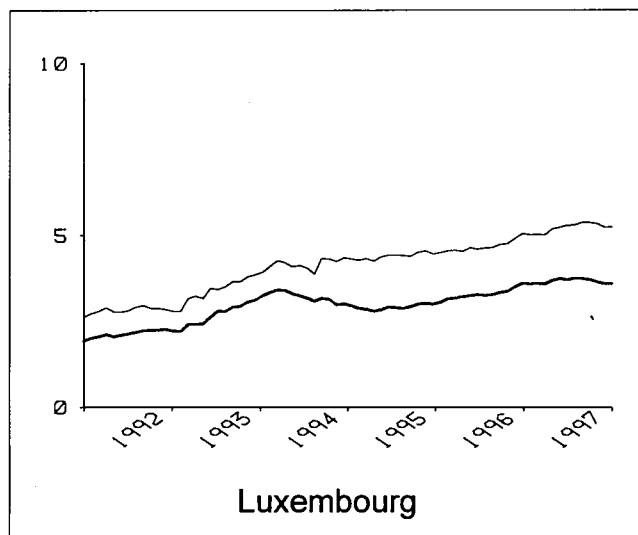
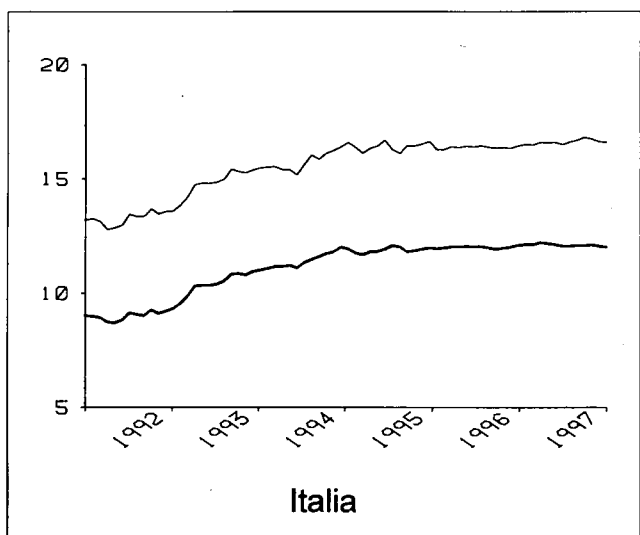
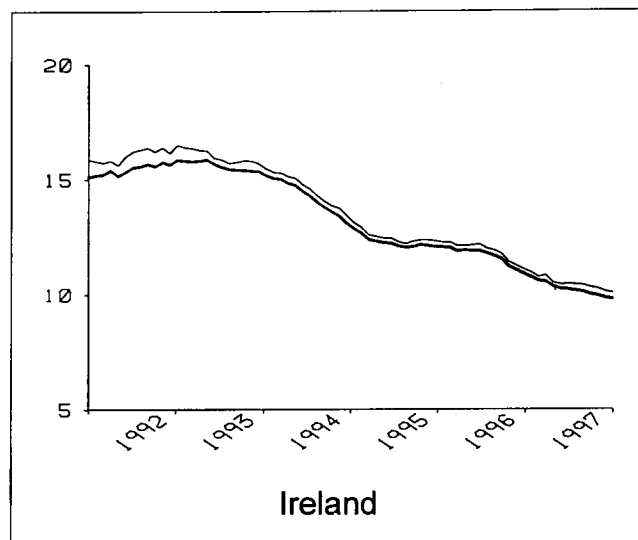
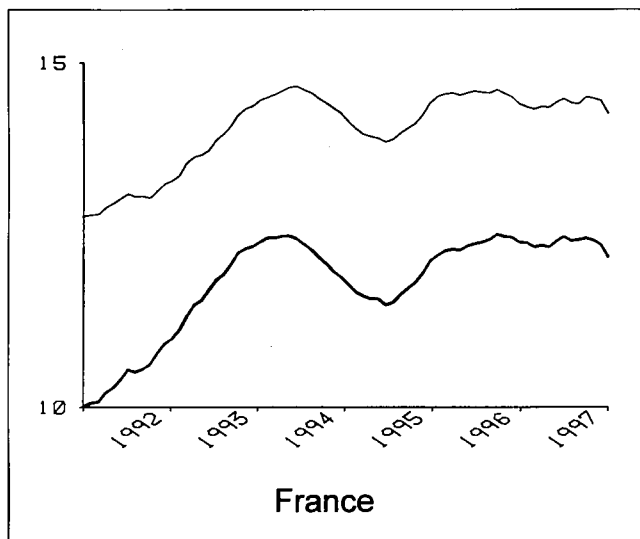


— Total

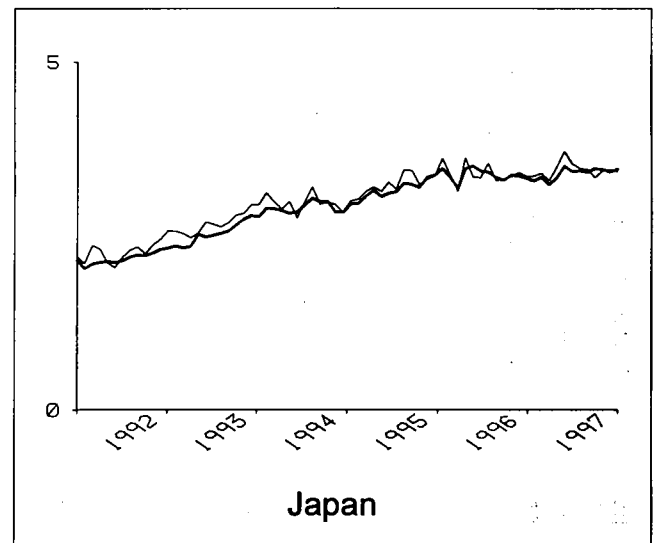
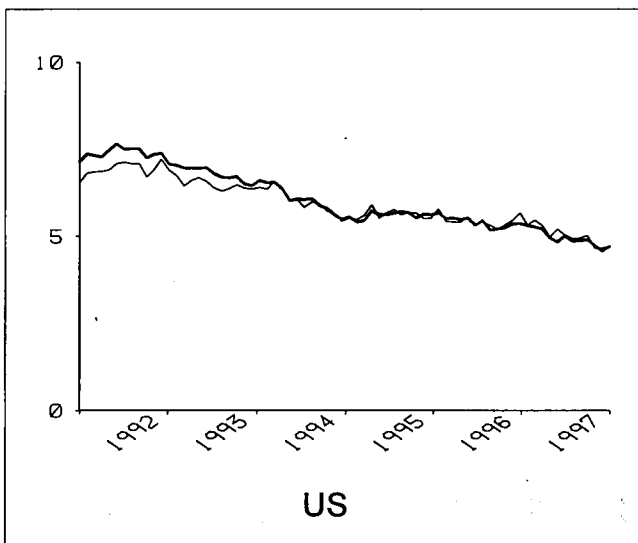
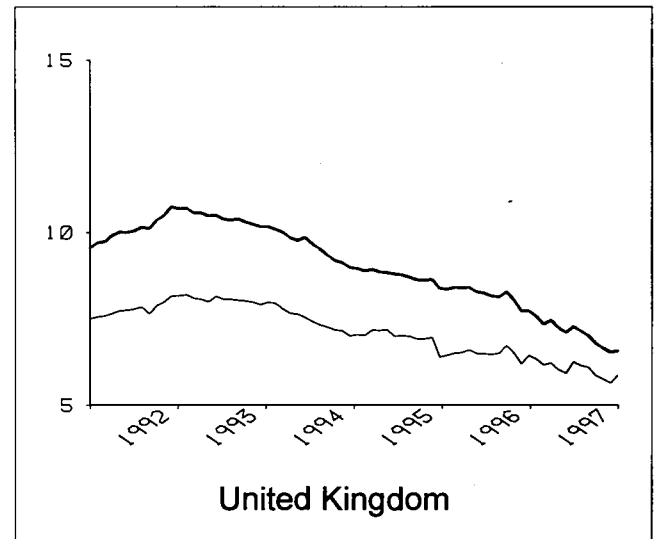
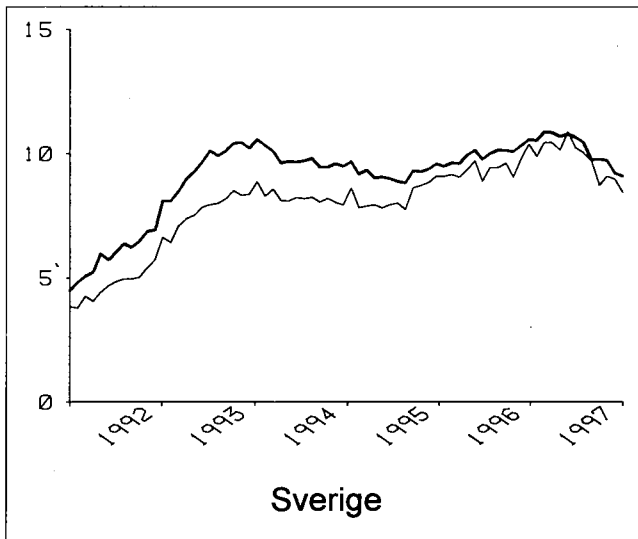
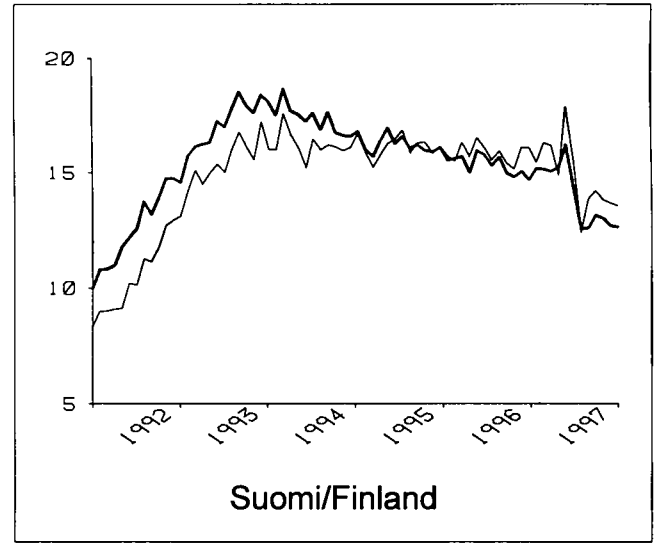
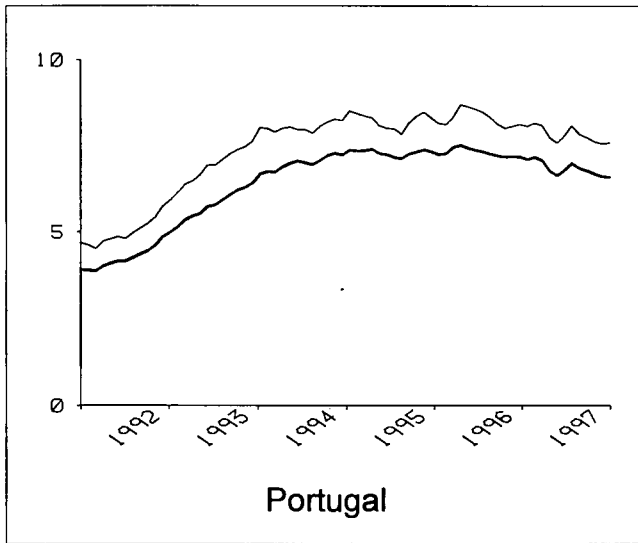
— Females



## Unemployment rates, seasonally adjusted (%)



## Unemployment rates, seasonally adjusted (%)



— Total

— Females



## Unemployment rates, seasonally adjusted

(%)



	EU-15	Belgique/ België	Danmark	Deutschland	Ellada	España	France	Ireland	Italia	Luxembourg	Nederland	Österreich	Portugal	Suomi/ Finland	Sverige	United Kingdom	US	Japan
<b>Total</b>																		
<b>Males and females</b>																		
1996.02	10.9	10.0	7.2	8.7	:	22.7	12.3	12.0	12.0	3.1	6.4	4.4	7.3	15.6	9.6	8.4	5.5	3.3
1997.02	10.7	9.3	6.4	9.4	:	21.3	12.3	10.6	12.1	3.6	5.6	4.3	7.2	15.1	10.9	7.3	5.3	3.3
1997.10	10.5	9.1	5.8	10.0	:	20.2	12.4	9.9	12.1	3.6	4.7	4.4	6.7	13.0	9.7	6.6	4.7	3.4
1997.11	10.5	9.0	5.7	10.0	:	20.2	12.4	9.8	12.1	3.6	4.6	4.4	6.6	12.7	9.2	6.5	4.6	3.4
1997.12	10.4	9.0	5.7	10.0	:	20.4	12.2	9.8	12.0	3.6	4.6	4.3	6.6	12.6	9.1	6.6	4.7	3.5
1998.01	10.4	8.9	5.9	9.8	:	20.2	12.1	9.7	12.0	3.4	4.7	4.4	6.6	12.5	9.4	6.7	:	3.5
1998.02	10.3	9.0	5.5	9.7	:	20.0	12.1	9.6	:	3.4	:	4.4	6.6	12.5	9.0	6.6	:	:
<b>Males</b>																		
1996.02	9.7	7.8	5.9	8.1	:	18.1	10.4	11.9	9.4	2.3	5.2	3.8	6.6	15.7	10.1	9.9	5.6	3.3
1997.02	9.5	7.3	5.1	8.8	:	16.6	10.7	10.5	9.5	2.8	4.4	3.5	6.4	14.1	11.3	8.3	5.1	3.3
1997.10	9.1	7.2	4.4	9.2	:	15.3	10.7	9.7	9.3	2.7	3.5	3.7	5.9	12.3	10.3	7.4	4.8	3.5
1997.11	9.1	7.1	4.3	9.2	:	15.3	10.6	9.7	9.3	2.6	3.3	3.6	5.8	11.8	9.4	7.2	4.5	3.4
1997.12	9.0	7.1	4.3	9.3	:	15.5	10.4	9.6	9.2	2.6	3.5	3.4	5.8	11.8	9.7	7.1	4.7	3.5
1998.01	9.0	7.0	4.5	8.9	:	15.3	10.3	9.5	9.2	2.4	3.6	3.5	5.7	11.8	9.9	7.3	:	3.6
1998.02	8.9	7.0	4.1	8.9	:	15.1	10.3	9.4	:	2.3	:	3.6	5.7	11.5	9.2	7.0	:	:
<b>Females</b>																		
1996.02	12.5	13.1	8.7	9.6	:	29.9	14.5	12.3	16.3	4.5	8.1	5.2	8.1	15.5	9.2	6.5	5.4	3.4
1997.02	12.4	12.0	8.1	10.2	:	28.6	14.3	10.7	16.5	5.0	7.2	5.3	8.2	16.3	10.4	6.2	5.5	3.4
1997.10	12.4	11.8	7.5	11.0	:	27.9	14.5	10.2	16.7	5.3	6.4	5.3	7.6	13.8	9.1	5.7	4.7	3.4
1997.11	12.3	11.7	7.4	11.1	:	27.9	14.4	10.1	16.6	5.2	6.3	5.3	7.6	13.7	9.0	5.6	4.7	3.4
1997.12	12.3	11.7	7.3	11.0	:	27.9	14.3	10.1	16.6	5.2	6.1	5.5	7.6	13.6	8.4	5.9	4.7	3.4
1998.01	12.3	11.6	7.6	10.9	:	27.8	14.2	10.0	16.5	5.1	6.1	5.4	7.7	13.2	8.7	6.1	:	3.3
1998.02	12.3	11.7	7.1	10.9	:	27.8	14.2	9.9	:	5.1	:	5.4	7.6	13.5	8.9	6.1	:	:
<b>Under 25 years</b>																		
<b>Males and females</b>																		
1996.02	21.9	23.4	11.5	9.7	:	42.7	28.5	18.8	33.3	8.9	11.3	6.1	16.6	28.7	20.8	15.5	12.3	6.9
1997.02	21.5	23.0	8.9	10.1	:	40.0	29.4	16.8	33.4	9.8	9.9	6.7	16.2	29.1	22.1	14.8	11.8	6.5
1997.10	20.6	22.7	7.6	10.6	:	37.9	29.0	15.2	32.9	9.7	7.7	6.6	15.5	24.5	20.0	13.3	11.0	6.7
1997.11	20.4	22.5	7.4	10.5	:	37.8	28.7	14.9	32.8	9.4	7.4	6.5	15.3	22.1	17.9	13.2	10.9	6.7
1997.12	20.3	22.4	7.2	10.3	:	37.9	28.0	14.7	32.8	9.3	7.7	6.6	15.2	24.2	18.5	13.1	10.5	7.2
1998.01	20.3	22.2	7.6	10.0	:	37.6	27.5	14.6	33.4	7.9	8.5	6.6	15.2	27.7	18.6	13.5	:	7.3
1998.02	20.0	22.3	7.0	9.9	:	37.0	27.2	14.3	:	7.9	:	6.6	15.2	25.7	18.0	12.6	:	:

# Unemployment rates, seasonally adjusted

(%)



	EU-15	Belgique/ België	Danmark	Deutschland	Ellada	España	France	Ireland	Italia	Luxembourg	Nederland	Österreich	Portugal	Suomi/ Finland	Sverige	United Kingdom	US	Japan
<b>Under 25 years</b>																		
<b>Males</b>																		
1996.02	20.7	20.1	9.6	10.4	:	36.9	25.5	19.7	29.0	9.3	11.2	5.2	14.8	27.1	21.4	18.2	13.1	7.1
1997.02	20.1	19.0	7.3	11.0	:	34.4	26.9	17.4	28.9	11.0	9.9	5.6	13.2	28.0	22.2	16.6	11.8	6.7
1997.10	19.0	18.6	6.0	11.4	:	31.6	26.4	15.6	28.6	10.4	6.4	5.5	11.8	24.3	20.5	15.0	12.0	6.8
1997.11	18.8	18.4	5.8	11.2	:	31.5	26.0	15.4	28.6	10.2	5.9	5.5	11.6	22.0	17.7	14.8	11.6	6.4
1997.12	18.8	18.3	5.8	11.1	:	31.8	25.3	15.2	28.6	9.8	7.3	5.3	11.5	22.3	21.8	14.6	11.0	7.5
1998.01	18.8	18.1	6.1	10.7	:	31.5	24.8	15.2	29.1	8.1	8.5	5.3	11.6	23.0	18.4	15.0	:	8.0
1998.02	18.3	18.3	5.5	10.5	:	30.5	24.5	14.9	:	8.3	:	5.5	11.5	22.7	18.5	13.9	:	:
<b>Females</b>																		
1996.02	23.3	27.3	13.5	9.0	:	49.6	31.8	17.8	38.8	8.5	11.4	7.0	18.9	30.5	20.1	12.2	11.3	6.7
1997.02	23.1	27.8	10.6	9.1	:	46.6	32.2	16.1	39.0	8.4	9.9	7.9	20.1	30.2	22.0	12.6	11.7	6.3
1997.10	22.4	27.6	9.3	9.8	:	45.6	31.9	14.6	38.5	8.8	9.0	7.7	19.9	24.8	19.3	11.4	9.9	6.5
1997.11	22.2	27.5	9.1	9.6	:	45.5	31.6	14.3	38.1	8.5	9.0	7.5	19.8	22.2	18.0	11.3	10.1	6.9
1997.12	22.0	27.3	8.8	9.4	:	45.3	30.9	14.1	38.2	8.7	8.2	8.0	19.6	26.1	15.0	11.2	10.0	6.8
1998.01	22.2	27.0	9.3	9.2	:	45.1	30.5	14.0	38.8	7.6	8.5	7.9	19.6	32.9	18.8	11.7	:	6.6
1998.02	21.9	27.2	8.8	9.2	:	44.9	30.2	13.7	:	7.6	:	7.9	19.6	29.1	17.6	10.9	:	:
<b>25 years and over</b>																		
<b>Males</b>																		
1996.02	8.2	6.5	5.1	7.8	:	14.8	8.7	10.3	6.6	1.6	4.2	3.6	5.1	14.3	8.7	8.3	4.2	2.8
1997.02	8.0	6.0	4.6	8.6	:	13.5	8.9	9.1	6.8	1.9	3.5	3.2	5.2	12.3	9.9	6.7	3.9	2.9
1997.10	7.7	6.0	4.1	9.0	:	12.5	9.1	8.5	6.5	1.8	3.0	3.4	4.9	10.7	9.1	6.0	3.5	3.0
1997.11	7.7	5.9	3.9	9.0	:	12.6	9.0	8.5	6.5	1.8	2.9	3.4	4.8	10.4	8.5	5.9	3.2	3.0
1997.12	7.7	5.9	4.0	9.0	:	12.7	8.9	8.5	6.5	1.9	2.9	3.2	4.8	10.4	8.2	5.8	3.6	3.0
1998.01	7.6	5.9	4.2	8.7	:	12.5	8.9	8.4	6.4	1.8	2.8	3.2	4.8	10.3	8.9	5.9	:	3.1
1998.02	7.6	5.9	3.8	8.7	:	12.5	8.8	8.3	:	1.7	:	3.3	4.7	9.9	8.1	5.8	:	:
<b>Females</b>																		
1996.02	10.6	11.2	7.6	9.7	:	25.0	12.4	10.7	11.8	3.9	7.4	4.8	6.3	13.7	7.7	5.3	4.3	2.7
1997.02	10.6	10.1	7.5	10.3	:	24.2	12.2	9.2	12.1	4.5	6.6	4.8	6.2	14.5	9.0	4.9	4.2	2.9
1997.10	10.7	9.9	7.1	11.2	:	23.7	12.5	9.0	12.6	4.7	5.8	4.9	5.6	12.4	7.9	4.6	3.7	2.9
1997.11	10.7	9.9	7.0	11.2	:	23.8	12.5	9.0	12.6	4.7	5.7	4.9	5.5	12.6	7.8	4.5	3.6	2.8
1997.12	10.7	9.9	6.9	11.2	:	23.8	12.4	8.9	12.6	4.6	5.6	5.0	5.6	11.7	7.6	4.8	3.7	2.8
1998.01	10.7	9.8	7.3	11.1	:	23.9	12.3	8.9	12.5	4.7	5.6	5.0	5.7	10.5	7.6	5.0	:	2.7
1998.02	10.7	9.8	6.8	11.1	:	23.8	12.4	8.9	:	4.7	:	5.0	5.7	11.3	7.8	5.1	:	:

∞ Unemployment rates, not seasonally adjusted

(%)



	EU-15	Belgique/ België	Danmark	Deutschland	Ellada	España	France	Ireland	Italia	Luxembourg	Nederland	Österreich	Portugal	Suomi/ Finland	Sverige	United Kingdom	US	Japan
<b>Total Males and females</b>																		
1996.02	11.3	10.0	7.7	9.5	:	23.0	12.6	12.1	12.3	3.4	6.7	5.3	7.6	16.2	10.0	8.4	6.0	3.4
1997.02	11.1	9.3	6.9	10.2	:	21.6	12.7	10.7	12.5	3.9	5.7	5.2	7.4	15.6	11.3	7.3	5.7	3.4
1997.10	10.5	9.3	5.6	9.5	:	20.3	12.7	9.8	12.3	3.8	4.8	4.2	6.7	12.5	9.4	6.6	4.4	3.5
1997.11	10.4	9.1	5.4	9.6	:	20.4	12.7	9.6	12.1	3.8	4.6	4.6	6.7	12.6	9.0	6.4	4.3	3.4
1997.12	10.4	9.1	5.5	10.0	:	20.3	12.5	9.9	12.0	3.8	4.7	4.9	6.7	12.3	8.8	6.3	4.4	3.2
1998.01	10.8	9.1	6.5	10.6	:	20.4	12.6	9.9	12.1	3.7	4.8	5.4	6.8	13.3	9.7	6.7	:	3.6
1998.02	10.7	9.0	5.9	10.6	:	20.3	12.4	9.7	:	3.6	:	5.3	6.8	12.7	9.4	6.5	:	:
<b>Males</b>																		
1996.02	10.3	7.9	6.7	9.1	:	18.5	10.8	12.0	9.8	2.6	5.5	5.4	6.9	16.8	10.7	10.0	6.4	3.4
1997.02	10.0	7.3	5.8	10.0	:	17.0	11.1	10.6	9.9	3.1	4.6	5.1	6.6	14.9	11.9	8.4	5.9	3.4
1997.10	8.9	7.3	4.0	8.5	:	15.3	10.9	9.6	9.3	2.7	3.5	3.0	5.8	12.0	10.1	7.2	4.3	3.4
1997.11	8.9	7.1	3.9	8.6	:	15.5	11.0	9.5	9.2	2.8	3.3	3.4	5.8	11.6	9.0	7.0	4.2	3.4
1997.12	9.1	7.2	4.1	9.2	:	15.6	10.9	9.7	9.2	2.8	3.6	4.4	5.8	11.9	9.4	6.9	4.5	3.3
1998.01	9.5	7.2	5.2	10.1	:	15.6	11.0	9.7	9.3	2.6	3.9	5.3	5.9	13.2	10.7	7.3	:	3.7
1998.02	9.4	7.1	4.6	10.1	:	15.4	10.8	9.5	:	2.6	:	5.2	5.9	12.2	9.6	7.0	:	:
<b>Females</b>																		
1996.02	12.6	13.0	8.9	9.9	:	30.1	14.8	12.3	16.6	4.8	8.3	5.2	8.4	15.5	9.4	6.4	5.5	3.5
1997.02	12.6	12.0	8.3	10.5	:	28.8	14.5	10.7	16.8	5.3	7.3	5.3	8.4	16.3	10.7	6.0	5.5	3.5
1997.10	12.5	12.1	7.4	10.8	:	28.0	14.9	10.1	17.1	5.5	6.6	5.7	7.8	13.1	8.6	5.8	4.5	3.5
1997.11	12.4	11.8	7.1	10.8	:	28.2	14.8	9.8	16.8	5.5	6.3	6.0	7.8	13.7	9.0	5.6	4.4	3.4
1997.12	12.2	11.8	7.0	11.0	:	27.5	14.5	10.1	16.4	5.4	6.2	5.5	7.7	12.8	8.2	5.6	4.2	3.1
1998.01	12.5	11.7	8.2	11.3	:	27.9	14.6	10.1	16.7	5.5	6.2	5.5	7.9	13.4	8.5	6.0	:	3.3
1998.02	12.4	11.6	7.3	11.2	:	27.9	14.4	9.9	:	5.4	:	5.4	7.8	13.3	9.2	5.9	:	:
<b>Under 25 years Males and females</b>																		
1996.02	22.1	22.9	12.5	10.7	:	43.5	28.0	19.0	33.8	9.7	11.7	6.8	17.2	26.8	22.5	14.9	13.1	7.0
1997.02	21.7	22.5	9.7	11.2	:	40.7	28.9	17.0	33.9	10.7	10.3	7.5	16.8	27.6	24.0	14.2	12.6	6.7
1997.10	21.1	24.5	7.3	10.0	:	38.0	32.4	14.9	33.7	10.4	7.9	6.8	15.7	22.7	20.4	13.3	10.3	6.4
1997.11	20.8	23.3	7.1	9.7	:	38.4	32.3	14.5	33.1	10.3	7.8	7.3	15.7	20.6	17.9	12.6	10.3	6.1
1997.12	20.4	23.0	7.0	10.0	:	37.5	31.4	14.7	32.5	10.1	8.1	7.4	15.3	22.2	18.2	12.0	9.4	5.8
1998.01	20.4	22.4	8.3	10.7	:	37.8	27.5	14.9	33.4	9.1	8.8	7.8	15.6	29.1	20.2	12.8	:	7.0
1998.02	20.1	21.9	7.7	10.9	:	37.4	26.7	14.5	:	8.7	:	7.4	15.4	24.3	19.7	11.9	:	:



# Unemployment rates, not seasonally adjusted

(%)



	EU-15	Belgique/ België	Danmark	Deutschland	Ellada	España	France	Ireland	Italia	Luxembourg	Nederland	Österreich	Portugal	Suomi/ Finland	Sverige	United Kingdom	US	Japan
<b>Under 25 years</b>																		
<b>Males</b>																		
1996.02	21.2	19.9	10.9	12.1	:	37.9	25.6	20.0	29.6	10.2	11.8	7.1	15.3	26.6	23.1	17.8	14.5	7.0
1997.02	20.7	18.8	8.4	12.8	:	35.4	27.0	17.7	29.5	12.3	10.5	7.7	13.7	28.0	23.9	16.2	13.2	6.8
1997.10	19.1	20.2	5.5	10.2	:	31.4	29.4	15.3	29.0	11.1	6.5	4.7	11.8	22.4	20.3	14.7	11.1	6.3
1997.11	19.0	19.2	5.4	10.1	:	32.1	29.5	15.0	28.8	11.0	6.2	5.4	11.8	20.3	17.5	14.2	11.1	6.3
1997.12	19.0	19.0	5.6	10.8	:	31.7	28.9	15.3	28.4	10.8	7.9	7.1	11.6	24.0	21.7	13.5	10.2	6.3
1998.01	19.1	18.5	6.9	11.8	:	31.9	25.4	15.5	29.0	9.3	9.3	8.1	11.8	24.9	20.7	14.3	:	7.8
1998.02	18.8	18.0	6.4	12.3	:	31.1	24.6	15.1	:	9.3	:	7.6	11.7	22.7	20.0	13.3	:	:
<b>Females</b>																		
1996.02	23.2	26.6	14.3	9.2	:	50.1	30.6	17.8	39.2	9.1	11.6	6.4	19.5	27.0	21.8	11.6	11.4	7.0
1997.02	23.0	27.1	11.2	9.3	:	47.2	31.1	16.1	39.5	8.9	10.1	7.2	20.8	27.2	24.0	11.9	11.9	6.6
1997.10	23.3	29.7	9.3	9.8	:	46.0	35.7	14.4	39.6	9.7	9.4	9.0	20.6	23.0	20.6	11.6	9.5	6.4
1997.11	22.8	28.3	9.0	9.4	:	46.0	35.3	13.8	38.5	9.6	9.4	9.3	20.4	20.9	18.4	10.9	9.5	6.0
1997.12	21.9	27.9	8.6	9.2	:	44.6	34.0	14.0	37.8	9.3	8.4	7.7	19.9	20.2	14.4	10.4	8.6	5.3
1998.01	22.0	27.1	9.9	9.4	:	45.0	29.8	14.1	39.0	8.8	8.4	7.5	20.1	33.4	19.5	11.1	:	6.1
1998.02	21.6	26.5	9.3	9.3	:	45.1	29.1	13.7	:	8.1	:	7.2	19.9	25.9	19.4	10.2	:	:
<b>25 years and over</b>																		
<b>Males</b>																		
1996.02	8.7	6.6	5.8	8.8	:	15.1	9.2	10.5	6.9	1.7	4.4	5.1	5.4	15.8	9.3	8.6	4.9	2.9
1997.02	8.5	6.2	5.2	9.7	:	13.8	9.5	9.2	7.1	2.0	3.6	4.7	5.4	13.5	10.5	6.9	4.6	3.0
1997.10	7.5	6.0	3.7	8.3	:	12.5	8.9	8.4	6.6	1.8	3.0	2.8	4.8	10.7	8.9	5.8	3.1	3.1
1997.11	7.5	5.9	3.7	8.4	:	12.6	9.0	8.4	6.5	1.9	2.9	3.1	4.8	10.6	8.0	5.7	3.0	3.0
1997.12	7.7	6.0	3.8	9.0	:	12.9	9.0	8.6	6.5	1.9	2.9	4.0	4.8	10.5	8.0	5.7	3.5	3.0
1998.01	8.2	6.0	4.8	9.9	:	12.8	9.5	8.6	6.7	1.9	2.9	4.8	4.9	12.0	9.6	6.0	:	3.2
1998.02	8.1	6.0	4.3	9.9	:	12.7	9.4	8.4	:	1.8	:	4.8	4.9	10.9	8.5	5.9	:	:
<b>Females</b>																		
1996.02	10.8	11.2	7.7	10.0	:	25.1	12.8	10.7	12.2	4.1	7.5	5.0	6.5	14.3	7.8	5.3	4.3	2.9
1997.02	10.8	10.2	7.6	10.6	:	24.3	12.7	9.2	12.4	4.7	6.7	4.9	6.4	15.0	9.1	4.8	4.3	3.0
1997.10	10.7	9.9	7.0	11.0	:	23.9	12.4	8.9	12.9	4.8	5.9	5.1	5.6	12.1	7.2	4.7	3.6	3.0
1997.11	10.7	9.8	6.7	11.0	:	24.0	12.3	8.7	12.7	4.9	5.7	5.4	5.7	12.9	8.0	4.5	3.5	2.9
1997.12	10.6	9.9	6.7	11.2	:	23.7	12.2	9.1	12.5	4.8	5.7	5.1	5.7	11.9	7.4	4.7	3.3	2.7
1998.01	11.0	9.9	7.8	11.5	:	23.9	12.9	8.9	12.7	5.0	5.7	5.2	5.8	11.2	7.4	5.0	:	2.8
1998.02	10.9	9.8	6.9	11.4	:	23.9	12.8	8.9	:	5.0	:	5.1	5.8	11.8	7.9	5.0	:	:

## Unemployment rates, annual averages

(%)



	EU-15	Belgique/ België	Danmark	Deutschland	Ellada	España	France	Ireland	Italia	Luxembourg	Nederland	Österreich	Portugal	Suomi/ Finland	Sverige	United Kingdom	US	Japan
<b>Total Males and females</b>																		
1991	8.2	6.6	8.4	5.6	7.0	16.4	9.5	14.8	8.8	1.7	5.8	:	4.0	7.2	3.3	8.8	6.7	2.1
1992	9.2	7.3	9.2	6.6	7.9	18.5	10.4	15.4	9.0	2.1	5.6	:	4.2	12.4	5.8	10.1	7.4	2.2
1993	10.7	8.9	10.1	7.9	8.6	22.8	11.7	15.6	10.3	2.7	6.6	4.0	5.7	16.9	9.5	10.4	6.8	2.5
1994	11.1	10.0	8.2	8.4	8.9	24.1	12.3	14.3	11.4	3.2	7.1	3.8	7.0	17.4	9.8	9.6	6.1	2.9
1995	10.7	9.9	7.2	8.2	9.2	22.9	11.7	12.3	11.9	2.9	6.9	3.9	7.3	16.3	9.2	8.7	5.6	3.1
1996	10.8	9.7	6.9	8.8	9.6	22.1	12.4	11.6	12.0	3.3	6.3	4.3	7.3	15.4	10.0	8.2	5.4	3.4
1997	10.6	9.2	6.1	9.7	9.6	20.8	12.4	10.2	12.1	3.7	5.2	4.4	6.8	14.0	10.2	7.1	4.9	3.4
<b>Males</b>																		
1991	6.9	4.3	7.5	4.6	4.4	12.3	7.4	14.2	6.2	1.3	4.1	:	2.8	8.6	3.6	9.9	7.0	2.0
1992	8.0	5.3	8.3	5.2	5.0	14.5	8.3	15.1	6.5	1.7	4.3	:	3.6	14.3	6.9	11.9	7.8	2.1
1993	9.7	6.9	9.6	6.6	5.7	19.1	10.0	15.4	7.8	2.2	5.6	3.1	4.8	18.5	11.1	12.3	7.1	2.4
1994	10.0	7.9	7.3	7.2	6.0	19.7	10.4	14.1	8.9	2.7	6.3	3.0	6.1	18.5	11.2	11.3	6.2	2.8
1995	9.4	7.8	5.9	7.1	6.2	18.2	9.8	12.1	9.2	2.1	5.7	3.1	6.5	16.4	10.1	10.1	5.6	3.1
1996	9.6	7.6	5.5	8.2	6.1	17.5	10.6	11.5	9.4	2.5	5.0	3.6	6.5	15.0	10.5	9.5	5.4	3.4
1997	9.3	7.2	4.7	9.0	6.2	16.0	10.7	10.1	9.3	2.7	3.9	3.6	6.0	13.2	10.6	7.9	4.9	3.4
<b>Females</b>																		
1991	10.0	10.0	9.5	7.0	11.8	23.9	12.2	15.9	13.2	2.3	8.4	:	5.4	5.6	2.9	7.4	6.3	2.2
1992	10.9	10.2	10.2	8.5	13.0	25.6	13.0	16.0	13.2	2.8	7.6	:	5.0	10.3	4.7	7.8	6.9	2.2
1993	12.2	11.8	10.8	9.6	13.6	29.3	13.8	16.0	14.8	3.4	7.9	5.0	6.8	15.3	7.7	8.1	6.5	2.6
1994	12.7	12.9	9.3	10.1	13.7	31.4	14.5	14.6	15.7	4.1	8.3	4.9	8.0	16.1	8.2	7.5	6.0	3.0
1995	12.5	12.9	8.9	9.6	14.1	30.5	14.0	12.5	16.4	4.4	8.6	5.0	8.2	16.2	8.2	7.0	5.6	3.2
1996	12.5	12.7	8.5	9.7	15.2	29.5	14.5	11.9	16.4	4.7	8.1	5.3	8.3	15.8	9.4	6.5	5.4	3.4
1997	12.4	11.9	7.8	10.6	14.9	28.3	14.4	10.4	16.6	5.2	6.9	5.3	7.8	14.9	9.7	6.0	5.0	3.4
<b>Under 25 years Males and females</b>																		
1991	16.2	14.9	11.6	5.9	22.9	31.1	21.5	22.4	26.0	3.2	8.3	:	8.8	15.2	7.8	14.3	13.4	4.4
1992	18.1	16.2	12.7	6.4	25.1	34.6	23.3	24.4	27.1	4.0	8.5	:	10.1	26.4	13.6	16.7	14.2	4.5
1993	21.3	21.8	13.8	7.9	26.8	43.4	27.3	25.2	30.4	5.4	11.1	6.3	12.9	34.9	22.6	17.9	13.3	5.1
1994	22.0	24.2	11.0	8.7	27.7	45.0	29.0	22.8	32.3	7.3	11.4	5.7	15.1	35.3	22.6	17.0	12.5	5.5
1995	21.5	23.9	10.6	8.8	28.5	42.5	27.5	19.4	33.3	7.4	12.0	5.5	16.6	32.0	19.6	15.9	12.1	6.1
1996	22.0	23.1	10.6	9.9	31.0	41.9	29.2	18.2	33.5	9.1	11.7	6.2	16.8	29.4	21.1	15.5	12.0	6.7
1997	21.0	23.0	8.2	10.3	31.0	38.8	29.1	16.0	33.1	9.9	9.2	6.7	15.4	27.5	20.9	14.2	11.3	6.7

# Unemployment rates, annual averages

(%)



	EU-15	Belgique/ België	Danmark	Deutschland	Ellada	España	France	Ireland	Italia	Luxembourg	Nederland	Österreich	Portugal	Suomi/ Finland	Sverige	United Kingdom	US	Japan
<b>Under 25 years</b>																		
<b>Males</b>																		
1991	15.0	11.9	11.1	5.4	16.0	25.7	18.1	23.7	22.6	3.3	7.4	:	6.8	17.2	8.5	16.6	14.3	4.7
1992	17.2	14.3	12.2	5.8	17.4	29.9	20.1	25.8	23.4	4.2	8.5	:	9.1	28.4	15.9	19.7	15.3	4.7
1993	20.8	20.7	13.4	7.8	18.9	40.0	25.1	27.0	26.6	5.2	12.0	5.2	10.8	36.0	26.0	21.0	14.3	4.9
1994	21.3	22.6	10.6	8.8	19.7	40.9	26.2	24.7	29.0	7.5	12.2	4.5	13.5	36.2	25.3	19.7	13.2	5.7
1995	20.1	21.5	8.5	8.9	19.8	36.9	23.9	20.7	29.1	7.1	11.3	4.4	15.1	30.9	20.8	18.1	12.5	6.2
1996	20.6	19.4	8.8	10.5	21.5	36.2	26.3	19.0	29.2	9.9	11.1	5.2	14.3	28.9	21.7	18.0	12.6	6.8
1997	19.5	19.0	6.7	11.1	22.1	32.9	26.5	16.5	28.5	10.9	8.1	5.6	12.0	25.5	21.5	15.9	11.8	6.8
<b>Females</b>																		
1991	17.6	18.0	12.2	6.3	31.3	37.9	25.0	20.9	30.3	3.1	9.1	:	11.1	13.1	7.1	11.6	12.4	4.2
1992	19.1	18.2	13.3	7.0	34.3	40.6	26.8	22.8	31.7	3.7	8.6	:	11.2	24.2	11.1	13.0	13.0	4.2
1993	21.9	23.0	14.1	8.1	36.1	47.6	29.7	23.0	35.1	5.6	10.1	7.6	15.3	33.6	19.0	14.2	12.2	5.2
1994	22.8	26.0	11.6	8.6	37.0	50.1	32.0	20.6	36.4	7.2	10.7	7.0	17.0	34.3	19.8	13.7	11.6	5.4
1995	23.2	26.6	12.9	8.7	38.3	49.0	31.2	17.9	38.6	7.8	12.7	6.7	18.5	33.4	18.4	13.3	11.6	6.0
1996	23.5	27.5	12.6	9.2	41.0	48.7	32.2	17.3	39.0	8.2	12.4	7.3	20.0	29.9	20.4	12.5	11.3	6.5
1997	22.8	27.8	9.9	9.5	40.6	46.0	31.9	15.3	38.8	8.8	10.4	7.8	19.7	29.6	20.4	12.2	10.7	6.5
<b>25 years and over</b>																		
<b>Males</b>																		
1991	5.5	3.5	6.7	4.5	2.9	9.6	6.0	12.1	3.4	1.0	3.4	:	2.0	7.3	2.7	8.4	5.7	1.7
1992	6.5	4.2	7.5	5.1	3.4	11.4	6.8	12.8	3.8	1.4	3.5	:	2.6	12.3	5.5	10.1	6.4	1.8
1993	7.9	5.3	8.8	6.4	4.0	15.0	8.2	12.9	4.9	1.9	4.5	2.8	3.7	16.0	9.0	10.5	5.8	2.1
1994	8.2	6.2	6.6	7.0	4.4	15.8	8.6	11.9	5.9	2.1	5.3	2.7	4.8	16.2	9.3	9.6	4.8	2.5
1995	7.9	6.2	5.3	6.9	4.6	14.8	8.2	10.4	6.3	1.5	4.8	2.9	5.0	14.5	8.7	8.6	4.3	2.7
1996	8.0	6.3	4.9	7.9	4.4	14.2	8.8	10.0	6.6	1.7	4.0	3.4	5.1	13.2	9.1	7.9	4.1	2.9
1997	7.9	6.0	4.3	8.8	4.5	13.0	9.0	8.7	6.7	1.9	3.2	3.3	5.0	11.6	9.3	6.4	3.6	2.9
<b>Females</b>																		
1991	8.3	8.6	8.8	7.1	7.8	19.3	10.0	13.9	8.8	2.1	8.1	:	4.2	4.4	2.1	6.3	5.1	1.8
1992	9.2	8.9	9.5	8.8	8.8	21.1	10.8	13.6	8.8	2.6	7.3	:	3.6	8.3	3.6	6.5	5.7	1.9
1993	10.3	10.0	10.0	9.9	9.3	24.1	11.5	13.6	10.3	2.9	7.3	4.5	5.2	12.7	6.0	6.6	5.4	2.2
1994	10.8	11.0	8.8	10.3	9.4	26.3	12.1	12.6	11.5	3.5	7.7	4.5	6.3	13.8	6.6	6.1	4.9	2.5
1995	10.6	11.1	8.0	9.8	9.8	25.7	11.8	10.9	12.0	3.7	7.5	4.6	6.5	14.0	6.8	5.7	4.4	2.7
1996	10.6	10.8	7.6	9.8	10.7	24.7	12.4	10.3	12.0	4.1	7.1	4.8	6.4	14.1	8.0	5.3	4.3	2.8
1997	10.7	10.0	7.4	10.8	10.6	24.1	12.4	9.1	12.4	4.6	6.2	4.8	5.8	12.9	8.4	4.8	3.9	2.9

## Number of unemployed, annual averages

(1000)



	EU-15	Belgique/ België	Danmark	Deutschland	Ellada	España	France	Ireland	Italia	Luxembourg	Nederland	Österreich	Portugal	Suomi/ Finland	Sverige	United Kingdom	US	Japan	
<b>Total Males and females</b>																			
1991	13613.6	263.0	242.9	2195.2	276.3	2476.5	2323.3	197.5	2064.3	2.8	395.1	:	190.9	179.4	148.1	2528.4	8426.1	1359.2	
1992	15321.2	295.4	265.8	2580.0	317.5	2810.0	2557.6	209.5	2097.5	3.6	394.4	:	199.3	304.0	260.4	2891.1	9384.3	1422.5	
1993	17766.0	365.5	289.1	3090.3	351.5	3502.6	2908.8	215.1	2345.6	4.5	467.1	151.5	270.3	410.4	414.9	2979.0	8733.8	1656.7	
1994	18454.7	416.2	228.8	3299.3	369.5	3727.4	3049.9	202.2	2570.9	5.4	516.3	146.2	332.6	420.0	426.2	2744.0	7996.5	1920.8	
1995	17865.6	416.2	203.1	3192.6	385.8	3573.7	2924.9	177.1	2687.3	4.9	505.1	149.4	346.5	397.2	404.4	2497.5	7404.3	2099.2	
1996	18176.1	408.0	194.6	3457.8	410.8	3523.7	3129.4	173.2	2731.2	5.6	468.4	164.4	349.0	376.1	439.3	2344.5	7235.5	2259.2	
1997	17893.5	389.2	171.6	3833.2	408.4	3342.8	3126.2	154.0	2755.9	6.3	392.2	164.2	331.2	343.3	445.3	2029.7	6738.9	2301.7	
<b>Males</b>																			
1991	6732.4	104.0	115.7	1031.2	110.7	1197.4	1004.1	124.4	934.2	1.4	168.3	:	75.4	112.1	84.8	1615.6	4817.3	771.7	
1992	7781.7	126.6	127.9	1163.0	126.9	1402.7	1132.6	131.8	964.6	1.8	179.7	:	95.0	182.7	160.7	1927.6	5379.7	820.0	
1993	9300.4	166.4	144.9	1481.7	146.2	1849.1	1364.7	134.1	1116.6	2.4	237.9	67.3	125.8	232.8	253.9	1976.5	4932.4	947.5	
1994	9568.3	193.6	109.7	1609.2	157.0	1900.9	1416.6	125.2	1260.3	2.8	267.9	63.7	160.7	232.6	254.7	1813.3	4367.7	1123.3	
1995	9057.2	190.9	89.3	1577.0	160.9	1750.7	1328.0	109.0	1303.3	2.2	244.9	66.6	170.4	207.7	231.2	1625.2	3983.0	1230.0	
1996	9268.7	185.4	84.8	1815.7	158.8	1713.4	1453.7	105.4	1329.3	2.7	214.7	77.2	169.9	189.8	241.8	1526.1	3879.4	1340.8	
1997	8972.0	177.8	71.6	2021.2	161.7	1570.7	1470.4	92.8	1321.8	3.0	170.8	76.0	159.4	168.2	242.3	1264.4	3576.7	1353.3	
<b>Females</b>																			
1991	6881.2	159.0	127.2	1164.1	165.6	1279.1	1319.1	73.1	1130.1	1.4	226.8	:	115.5	67.2	63.3	912.8	3608.8	587.5	
1992	7539.5	168.8	137.9	1417.0	190.5	1407.4	1425.0	77.8	1132.9	1.7	214.6	:	104.3	121.3	99.7	963.5	4004.7	602.5	
1993	8465.6	199.1	144.1	1608.6	205.3	1653.4	1544.1	81.0	1228.9	2.1	229.2	84.2	144.5	177.6	161.0	1002.5	3801.3	709.2	
1994	8886.4	222.6	119.0	1690.1	212.5	1826.5	1633.3	77.0	1310.6	2.6	248.4	82.5	171.9	187.4	171.5	930.6	3628.8	797.5	
1995	8808.4	225.2	113.8	1615.6	224.9	1823.0	1597.0	68.0	1384.0	2.7	260.2	82.8	176.1	189.5	173.2	872.3	3421.3	869.2	
1996	8907.5	222.6	109.8	1642.1	252.0	1810.3	1675.7	67.8	1401.9	2.9	253.7	87.3	179.1	186.3	197.5	818.4	3356.1	918.3	
1997	8921.5	211.4	100.0	1812.0	246.7	1772.1	1655.8	61.2	1434.1	3.3	221.4	88.2	171.8	175.1	203.1	765.3	3162.3	948.3	
<b>Under 25 years Males and females</b>																			
1991	4418.3	73.4	63.1	349.4	121.5	920.4	678.8	66.0	1018.5	0.8	109.3	:	73.8	52.1	53.8	799.6	2766.6	385.8	
1992	4700.6	78.7	65.5	353.5	132.5	999.9	709.1	69.3	1003.8	1.0	113.0	:	80.2	82.6	84.2	892.2	2898.8	399.2	
1993	5284.0	102.5	68.5	414.5	142.4	1231.5	797.2	70.9	1035.3	1.2	143.9	38.7	97.7	103.4	125.2	911.4	2717.0	455.0	
1994	5226.9	114.1	54.5	427.9	143.2	1244.0	798.4	63.9	1042.7	1.6	144.5	34.7	112.5	97.5	120.6	826.9	2692.6	499.2	
1995	4942.2	107.8	54.2	400.5	144.6	1148.6	727.9	53.5	1059.9	1.5	148.9	33.2	116.0	88.3	102.3	755.0	2590.3	539.2	
1996	4933.4	99.8	53.2	431.0	156.5	1124.8	763.4	50.6	1050.8	1.8	142.1	35.2	115.6	79.8	105.0	723.9	2545.2	584.2	
1997	4658.0	95.7	40.1	452.6	152.3	1029.1	723.6	45.4	1031.0	2.0	111.1	36.1	108.1	80.0	100.8	650.4	2424.0	570.0	

## Methodological notes

1. The Eurostat unemployment rates are calculated according to the recommendations of the 13<sup>th</sup> International Conference of Labour Statisticians organised by the International Labour Office (ILO) in 1982. Unemployed persons are those persons aged 15 years and over who
  - are without work
  - are available to start work within the next two weeks
  - and have actively sought employment at some time during the previous four weeks.
2. The unemployment estimates are based on the results of the European Community Labour Force Survey. It is carried out in the spring of each year. The use of the same definitions and concepts throughout the EU ensures comparability of the results between Member States.
3. The **unemployment rate** is the number of unemployed as a percentage of the labour force (people living in collective households are excluded). The labour force is the total of the employed and the unemployed. Monthly estimates of the **number of unemployed** are derived by interpolating/extrapolating each year's Community Labour Force Survey results using the results of the national labour force surveys (see table A) and monthly indicators of unemployment (see table B). Monthly estimates of **employment** are obtained by
  - interpolating/extrapolating linearly the annual Community LFS results (Belgium, Denmark, Germany, Greece, France, Ireland, Luxembourg, Netherlands)
  - interpolating/extrapolating linearly the results of the national quarterly labour force surveys after adjustment to the Community LFS (Spain, Italy, Portugal, United Kingdom)
  - using the results of the national monthly labour force surveys (Finland, Sweden, USA, Japan).
4. Estimates are made separately for males under 25, females under 25, males aged 25 years and over, and females aged 25 years and over. Totals are obtained by adding up these four basic categories.
5. The figures for the four basic categories are seasonally adjusted using the multiplicative version of the X-11 method of the US Bureau of the Census. The reliability of the figures is adversely affected if deseasonalisation is performed on short series (such as Germany since the reunification) or where breaks occur (such as Sweden since 1993).
6. From 1992, in some member States, the more restrictive application of the ILO guidelines introduces a break in the series. In such cases, no estimates are provided for the period before 1992.

**Table A: Reference period of the last surveys used**

Country	Community labour force surveys	National labour force surveys
Belgium	1997Q2	-
Denmark	1996Q2	-
Germany	1996Q2	-
Greece	1997Q2	-
Spain	1997Q2	1997Q4
France	1997Q2	-
Ireland	1997Q2	-
Italy	1997Q2	1998Q1
Luxembourg	1996Q2	-
Netherlands	1997Q2	-
Austria	1997Q2	1995Q1
Portugal	1997Q2	1997Q3
Finland	-	1998FEB
Sweden	-	1998FEB
United Kingdom	1997Q2	1997Q4

NB: 1994Q2 = 2<sup>nd</sup> quarter of 1994

## **Table B: Monthly indicators of unemployment.**

**BELGIUM:** All persons in the following categories registered at employment offices: wholly unemployed persons in receipt of benefit, other unemployed persons compulsory registered and voluntarily registered persons without work. Series provided by the Office National de l'Emploi.

**DENMARK:** Persons seeking full-time or part-time employment, whether or not they are members of an unemployment insurance fund. Series provided by Danmarks Statistik.

**GERMANY:** Unemployed persons registered at public employment offices and seeking work as employees for at least 18 hours per week. Series provided by the Bundesanstalt für Arbeit.

**GREECE:** No monthly indicator

**SPAIN:** Unemployed persons registered at public employment offices and seeking work as employees for 20 hours or more per week. Series provided by the Ministerio de Trabajo y Seguridad Social.

**FRANCE:** Unemployed persons registered at the Agence de l'Emploi and seeking permanent full-time employment (demandeurs de catégorie 1). Series provided by the Ministère du Travail, de l'Emploi et de la Formation Professionnelle.

**IRELAND:** Claimants for unemployment benefit, applicants for unemployment assistance and others seeking work who are registered with the employment services of the Department of Social Welfare. Excluded are persons seeking part-time employment. Series provided by the Central Statistics Office.

**ITALY:** Persons without work, persons seeking their first job, persons working part-time for less than 20 hours per week and workers on a fixed-term contract of not more than 4 months in any 12-month period, who are looking for a different job. Series provided by the Ministero del Lavoro e della Previdenza Sociale.

**LUXEMBURG:** Unemployed persons registered at employment offices and seeking work as employees for at least 20 hours per week. Series provided by the Administration de l'Emploi.

**NETHERLANDS:** Persons registered at employment offices, between the ages of 16 and 64 years,  
– who are without work or with work less than 12 hours a week and  
– who are immediately available for paid employment for at least 12 hours a week or who found a job and will start working for at least 12 hours a week.  
Series provided by the CBS.

**AUSTRIA:** No monthly indicator.

**PORTUGAL:** Persons registered at employment offices who are available for work within 30 days after registration. Series provided by the Instituto de Emprego e Formação Profissional.

**FINLAND:** Number of unemployed in the monthly labour force survey.

**SWEDEN:** Number of unemployed in the monthly labour force survey.

**UNITED KINGDOM:** Persons seeking full-time work and claiming unemployment benefit because they are out of work. Series provided by the Department of Employment.

**BELGIQUE/BELGIË**  
**Moniteur belge/Belgisch Staatsblad**  
 Rue de Louvain 40-42/Leuvenseweg 40-42  
 B-1000 Bruxelles/Brussel  
 Tél. (32-2) 552 22 11  
 Fax (32-2) 511 01 84  
**Jean De Lannoy**  
 Avenue du Roi 202/Koningslaan 202  
 B-1060 Bruxelles/Brussel  
 Tél. (32-2) 538 51 69  
 Fax (32-2) 538 08 41  
 E-mail: jean.de.lannoy@infoboard.be  
 URL: http://www.jean-de-lannoy.be  
**Librairie européenne/Europese Boekhandel**  
 Rue de la Loi 244/Welstraat 244  
 B-1040 Bruxelles/Brussel  
 Tél. (32-2) 295 26 39  
 Fax (32-2) 735 08 60

**DANMARK**  
**J. H. Schultz Information A/S**  
 Herstedvang 10-12  
 DK-2620 Albertslund  
 Tlf. (45) 43 63 23 00  
 Fax (45) 43 63 19 69  
 E-mail: schultz@schultz.dk  
 URL: http://www.schultz.dk

**DEUTSCHLAND**  
**Bundesanzeiger Verlag**  
 Breite Straße 78-80  
 Postfach 10 05 34  
 D-50667 Köln  
 Tel. (49-221) 20 29-0  
 Fax (49-221) 202 92 78  
 E-mail: Vertrieb@bundesanzeiger.de  
 URL: http://www.bundesanzeiger.de

**ΕΛΛΑΔΑ/GREECE**  
**G. C. Eleftheroudakis SA**  
 International Bookstore  
 Panepistimiou 17  
 GR-10564 Athina  
 Tel. (30-1) 331 41 80/1/2/3  
 Fax (30-1) 323 98 21  
 E-mail: elebooks@netor.gr

**ESPAÑA**  
**Mundi Prensa Libros, SA**  
 Castelló, 37  
 E-28001 Madrid  
 Tel. (34-1) 431 33 99  
 Fax (34-1) 575 39 98  
 E-mail: libreria@mundiprensa.es  
 URL: http://www.mundiprensa.es

**Boletín Oficial del Estado**  
 Trafalgar, 27  
 E-28010 Madrid  
 Tel. (34-1) 538 21 11 (Libros)/  
 384 17 15 (Suscripciones)  
 Fax (34-1) 538 21 21 (Libros)/  
 384 17 14 (Suscripciones)  
 E-mail: webmaster@boe.es  
 URL: http://www.boe.es

**FRANCE**  
**Journal officiel**  
 Service des publications des CE  
 26, rue Desaix  
 F-75727 Paris Cedex 15  
 Tél. (33) 140 58 77 01/31  
 Fax (33) 140 58 77 00

**IRELAND**  
**Government Supplies Agency**  
 Publications Section  
 4-5 Harcourt Road  
 Dublin 2  
 Tel. (353-1) 661 31 11  
 Fax (353-1) 475 27 60

**ITALIA**  
**Licosa SpA**  
 Via Duca di Calabria, 1/1  
 Casella postale 552  
 I-50125 Firenze  
 Tel. (39-55) 64 54 15  
 Fax (39-55) 64 12 57  
 E-mail: licosa@fbcc.it  
 URL: http://www.fbcc.it/licosa

**LUXEMBOURG**  
**Messageries du livre SARL**  
 5, rue Raiffeisen  
 L-2411 Luxembourg  
 Tél. (352) 40 10 20  
 Fax (352) 49 06 61  
 E-mail: mdl@pt.lu  
 Abonnements:

**Messageries Paul Kraus**  
 11, rue Christophe Plantin  
 L-2339 Luxembourg  
 Tél. (352) 49 98 88-8  
 Fax (352) 49 98 88-444  
 E-mail: mpk@pt.lu  
 URL: http://www.mpk.lu

**NEDERLAND**  
**SDU Servicecentrum Uitgevers**  
 Externe Fondsen  
 Postbus 20014  
 2500 EA Den Haag  
 Tel. (31-70) 378 98 80  
 Fax (31-70) 378 97 83  
 E-mail: sdu@sdu.nl  
 URL: http://www.sdu.nl

**ÖSTERREICH**  
**Manz'sche Verlags- und  
 Universitätsbuchhandlung GmbH**  
 Siebenbrunnengasse 21  
 Postfach 1  
 A-1050 Wien  
 Tel. (43-1) 53 16 13 34/40  
 Fax (43-1) 53 16 13 39  
 E-mail: auslieferung@manz.co.at  
 URL: http://www.austria.EU.net:81/manz

**PORTUGAL**  
**Imprensa Nacional-Casa da Moeda, EP**  
 Rua Marquês de Sá da Bandeira, 16 A  
 P-1050 Lisboa Codex  
 Tel. (351-1) 353 03 99  
 Fax (351-1) 353 02 94, 384 01 32  
**Distribuidora de Livros Bertrand Ld.º**  
 Rua das Terras dos Vales, 4/A  
 Apartado 60037  
 P-2701 Amadora Codex  
 Tel. (351-1) 495 90 50, 495 87 87  
 Fax (351-1) 496 02 55

**SUOMI/FINLAND**  
**Akateeminen Kirjakauppa/Akademiska  
 Bokhandeln**  
 Pohjoisesplanadi 39/  
 Norra esplanaden 39  
 PL/PB 128  
 FIN-00101 Helsinki/Helsingfors  
 P./tfn (358-9) 121 41  
 F./fax (358-9) 121 44 35  
 E-mail: akatilaus@stockmann.mailnet.fi  
 URL: http://booknet.cultnet.fi/aka/index.htm

**SVERIGE**  
**BTJ AB**  
 Traktorvägen 11  
 S-221 82 Lund  
 Tfn (46-46) 18 00 00  
 Fax (46-46) 30 79 47  
 E-post: btjeu-pub@btj.se  
 URL: http://www.btj.se/media/ev

**UNITED KINGDOM**  
**The Stationery Office Ltd  
 International Sales Agency**  
 51 Nine Elms Lane  
 London SW8 5DR  
 Tel. (44-171) 873 90 90  
 Fax (44-171) 873 84 63  
 E-mail: jill.speed@theso.co.uk  
 URL: http://www.the-stationery-office.co.uk

**ISLAND**  
**Bokabud Larusar Blöndal**  
 Skólavörðustíg, 2  
 IS-101 Reykjavík  
 Tel. (354) 551 56 50  
 Fax (354) 552 55 60

**NORGE**  
**NIC Info A/S**  
 Ostenjoveien 18  
 Boks 6512 Etterstad  
 N-0606 Oslo  
 Tel. (47-22) 97 45 00  
 Fax (47-22) 97 45 45

**SCHWEIZ/SUISSE/SVIZZERA**  
**OSEC**  
 Stampfenbachstraße 85  
 CH-8035 Zürich  
 Tel. (41-1) 365 53 15  
 Fax (41-1) 365 54 11  
 E-mail: uleimbacher@osec.ch  
 URL: http://www.osec.ch

**BĂLGARIA**  
**Europress-Euromedia Ltd**  
 59, Bld Vitosha  
 BG-1000 Sofia  
 Tel. (359-2) 980 37 66  
 Fax (359-2) 980 42 30

**ČESKÁ REPUBLIKA**  
**NIS CR — prodeja**  
 Konviktská 5  
 CZ-113 57 Praha 1  
 Tel. (420-2) 24 22 94 33, 24 23 09 07  
 Fax (420-2) 24 22 94 33  
 E-mail: nkposp@dec.nis.cz  
 URL: http://www.nis.cz

**CYPRUS**  
**Cyprus Chamber of Commerce & Industry**  
 Griva-Digeni 38 & Deligiorgi 3  
 Mail orders:  
 PO Box 1455  
 CY-1509 Nicosia  
 Tel. (357-2) 44 95 00, 46 23 12  
 Fax (357-2) 36 10 44  
 E-mail: cy1691\_eic\_cyprus@vans.infonet.com

**MAGYARORSZÁG**  
**Euro Info Service**  
 Európa Ház  
 Margitsziget  
 PO Box 475  
 H-1396 Budapest 62  
 Tel. (36-1) 111 60 61, 111 62 16  
 Fax (36-1) 302 50 35  
 E-mail: euroinfo@mail.matav.hu  
 URL: http://www.euroinfo.hu/index.htm

**MALTA**  
**Miller Distributors Ltd**  
 Malta International Airport  
 PO Box 25  
 LQA 05 Malta  
 Tel. (356) 66 44 88  
 Fax (356) 67 67 99

**POLSKA**  
**Ars Polona**  
 Krakowskie Przedmiescie 7  
 Skr. pocztowa 1001  
 PL-00-950 Warszawa  
 Tel. (48-22) 826 12 01  
 Fax (48-22) 826 62 40, 826 53 34, 826 86 73  
 E-mail: ars\_pol@bevy.hsn.com.pl

**ROMÂNIA**  
**Euromedia**  
 Str. G-ral Berthelot Nr 41  
 RO-70749 Bucuresti  
 Tel. (40-1) 210 44 01, 614 06 64  
 Fax (40-1) 210 44 01, 312 96 46

**SLOVAKIA**  
**Slovak Centre of Scientific and Technical  
 Information**  
 Námestie slobody 19  
 SK-81223 Bratislava 1  
 Tel. (421-7) 531 83 64  
 Fax (421-7) 531 83 64  
 E-mail: europ@tb1.sltk.stuba.sk

**SLOVENIA**  
**Gospodarski Vestnik**  
 Založniška skupina d.d.  
 Dunajska cesta 5  
 SLO-1000 Ljubljana  
 Tel. (386) 611 33 03 54  
 Fax (386) 611 33 91 28  
 E-mail: belicd@gvestnik.si  
 URL: http://www.gvestnik.si

**TÜRKIYE**  
**Dünya Infotel AS**  
 İstiklal Cad. No: 469  
 TR-80050 Tünel-Istanbul  
 Tel. (90-212) 251 91 96  
 Fax (90-212) 251 91 97

**AUSTRALIA**  
**Hunter Publications**  
 PO Box 404  
 3167 Abbotsford, Victoria  
 Tel. (61-3) 94 17 53 61  
 Fax (61-3) 94 19 71 54

**CANADA**  
 Subscriptions only/Uniquement abonnements:  
**Renouf Publishing Co. Ltd**  
 5369 Chemin Canotek Road Unit 1  
 K1J 9J3 Ottawa, Ontario  
 Tel. (1-613) 745 26 65  
 Fax (1-613) 745 76 60  
 E-mail: renouf@fox.nstn.ca  
 URL: http://www.renoufbooks.com

**EGYPT**  
**The Middle East Observer**  
 41, Sherif Street  
 Cairo  
 Tel. (20-2) 393 97 32  
 Fax (20-2) 393 97 32

**HRVATSKA**  
**Mediatrade Ltd**  
 Pavia Hatza 1  
 HR-10000 Zagreb  
 Tel. (385-1) 43 03 92  
 Fax (385-1) 43 03 92

**INDIA**  
**EBIC India**  
 3rd Floor, Y. B. Chavan Centre  
 Gen. J. Bhosale Marg.  
 400 021 Mumbai  
 Tel. (91-22) 282 60 64  
 Fax (91-22) 285 45 64  
 E-mail: ebic@giabm01.vsnl.net.in

**ISRAËL**  
**ROY International**  
 17, Shimon Hatarssi Street  
 PO Box 13056  
 61130 Tel Aviv  
 Tel. (972-3) 546 14 23  
 Fax (972-3) 546 14 42  
 E-mail: royil@netvision.net.il  
 Sub-agent for the Palestinian Authority:

**Index Information Services**  
 PO Box 19502  
 Jerusalem  
 Tel. (972-2) 627 16 34  
 Fax (972-2) 627 12 19

**JAPAN**  
**PSI-Japan**  
 Asahi Sanbancho Plaza #206  
 7-1 Sanbancho, Chiyoda-ku  
 Tokyo 102  
 Tel. (81-3) 32 34 69 21  
 Fax (81-3) 32 34 69 15  
 E-mail: psijapan@gol.com  
 URL: http://www.psi-japan.com

**MALAYSIA**  
**EBIC Malaysia**  
 Level 7, Wisma Hong Leong  
 18 Jalan Perak  
 50450 Kuala Lumpur  
 Tel. (60-3) 262 62 98  
 Fax (60-3) 262 61 98  
 E-mail: ebic-kl@mol.net.my

**PHILIPPINES**  
**EBIC Philippines**  
 19th Floor, PS Bank Tower Sen.  
 Gil J. Puyat Ave. cor. Tindalo St.  
 Makati City  
 Metro Manila  
 Tel. (63-2) 759 66 80  
 Fax (63-2) 759 66 90  
 E-mail: eccpcom@globe.com.ph

**RUSSIA**  
**CCCEC**  
 60-Ietiya Oktyabrya Av. 9  
 117312 Moscow  
 Tel. (70-95) 135 52 27  
 Fax (70-95) 135 52 27

**SOUTH AFRICA**  
**Safto**  
 5th Floor Export House,  
 CNR Maude & West Streets  
 PO Box 782 706  
 2146 Sandton  
 Tel. (27-11) 883 37 37  
 Fax (27-11) 883 65 69

**SOUTH KOREA**  
**Kyowa Book Company**  
 1 F1, Phylum Hwa Bldg  
 411-2 Hap Jeong Dong, Mapo Ku  
 121-220 Seoul  
 Tel. (82-2) 322 67 80/1  
 Fax (82-2) 322 67 82  
 E-mail: kyowa2@ktnet.co.kr.

**THAÏLANDE**  
**EBIC Thailand**  
 Vanessa Building 8th Floor  
 29 Soi Chidlom  
 Ploenchit  
 10330 Bangkok  
 Tel. (66-2) 655 06 27  
 Fax (66-2) 655 06 28  
 E-mail: ebicbkk@ksc15.th.com

**UNITED STATES OF AMERICA**  
**Bernan Associates**  
 4611-F Assembly Drive  
 MD20706 Lanham  
 Tel. (800) 274 44 47 (toll free telephone)  
 Fax (800) 865 34 50 (toll free fax)  
 E-mail: query@bernan.com  
 URL: http://www.bernan.com

**ANDERE LÄNDER/OTHER COUNTRIES/  
 AUTRES PAYS**  
 Bitte wenden Sie sich an ein Büro Ihrer  
 Wahl / Please contact the sales office of  
 your choice / Veuillez vous adresser au  
 bureau de vente de votre choix

Price (excl. VAT) in Luxembourg: Single copy ECU 10 • Subscription ECU 102



OFFICE FOR OFFICIAL PUBLICATIONS  
OF THE EUROPEAN COMMUNITIES

L-2985 Luxembourg

Catalogue number: CA-BH-98-004-EN-C