



Unemployment

12 1997 Monthly

3 December 1997

UNEMPLOYMENT IN THE EUROPEAN UNION

October 1997

Eurostat estimates that the seasonally-adjusted unemployment rate in the European Union was **10.7% at the end of October 1997**, the same level as in the three previous months but 0.1% lower than in October 1996.

Unemployment generally began falling several months ago and continues to do so in Denmark, Ireland, the Netherlands and Portugal, and also, though more fitfully, in Belgium, while little change is detectable in Spain, Finland and the United Kingdom. It seems to have stopped rising in France, Italy, Sweden and even in Germany, where it remained at 10% in October. The lowest unemployment levels in the European Union are still those for Austria and Luxembourg.

The results of the 1997 Labour Force Survey in Spain have now been taken into account, causing an upward revision of the Spanish monthly unemployment series by comparison with earlier publications. The seasonally-adjusted unemployment figure for Spain is once more over 20%, which is 10 percentage points above the EU average; the women's unemployment rate at 28% is well over double the European average of 12.6%.

See the supplement "Short-Term Employment Trends" on page 15

STATISTICAL OFFICE OF THE EUROPEAN COMMUNITIES

L-2920 Luxembourg — Tél. 4301-1 — Télex COMEUR LU 3423
 B-1049 Bruxelles, rue de la Loi 200 — Tél. 299 11 11

The *unemployment data* presented in this bulletin are in line with the definitions and recommendations of the International Labour Office. The figures have been estimated by Eurostat on the basis of the European Labour Force Survey and can be used for international comparisons.

In the third month of each quarter, the bulletin contains a 4-page *supplement on short-term employment trends*.

Detailed information on methods and sources can be found at the end of the sections on unemployment and employment.

For further information : A. Persenaire tel. +352 4301-32005
 J. Recktenwald tel. +352 4301-34103
 R. Brandenbourger tel. +352 4301-33272

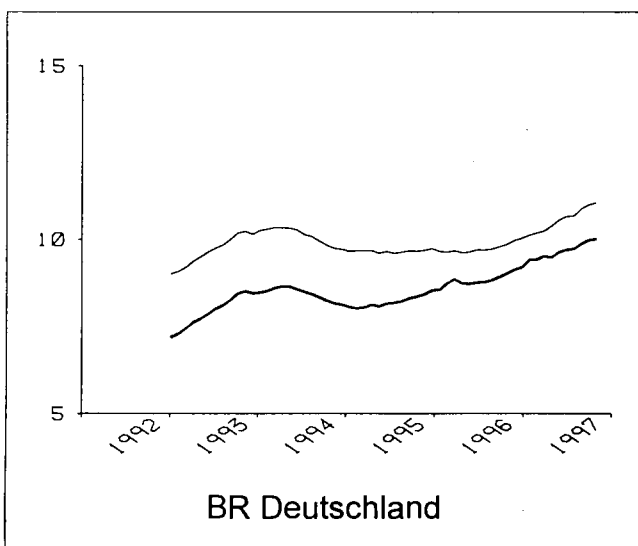
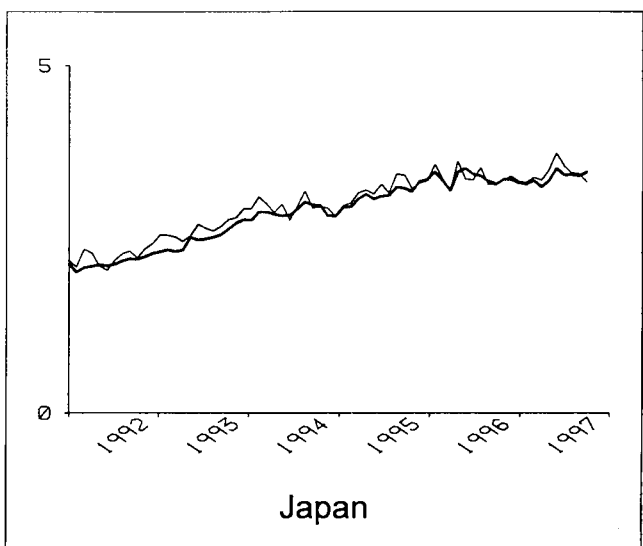
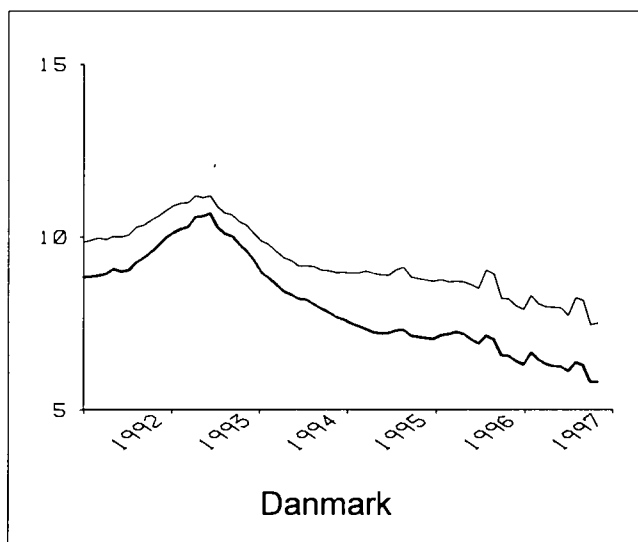
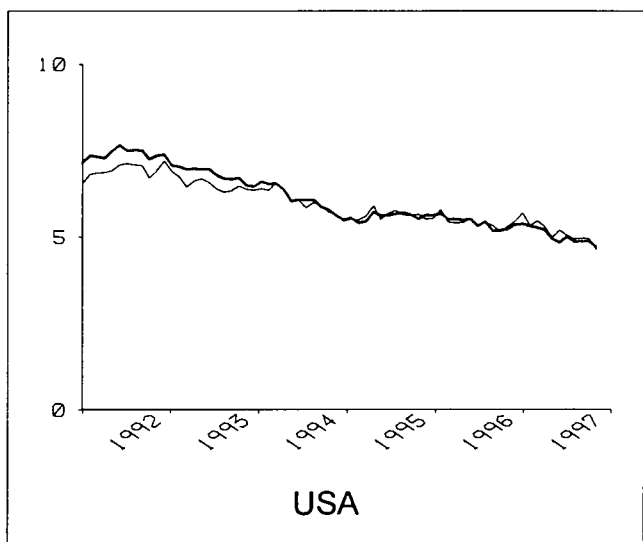
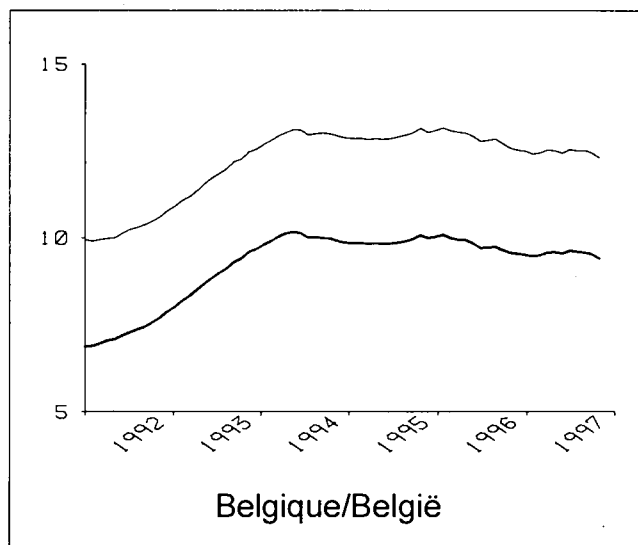
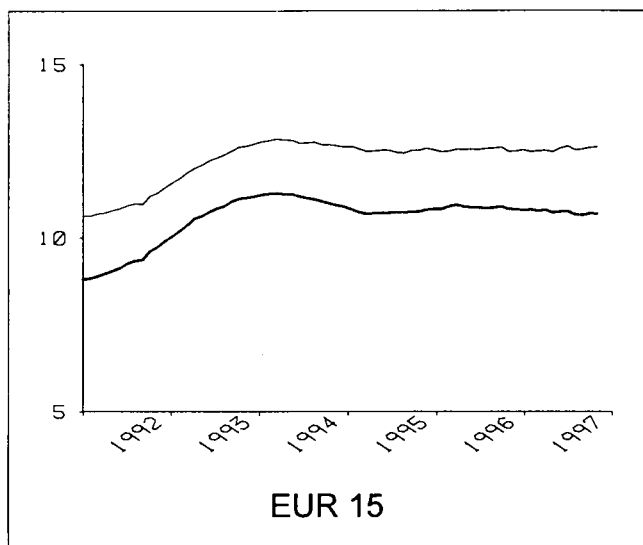
Table of contents :

Unemployment rates, seasonally adjusted :	
- graphs.....	3-5
- tables	6-7
Unemployment rates, not seasonally adjusted.....	8-9
Unemployment rates, annual averages.....	10-11
Number of unemployed, annual averages.....	12
Methodological notes (unemployment).....	13-14
Supplement " Short-term employment trends "	15-18

Signs and abbreviations :

Eur-15	All Member States of the European Union
T	Total
F	Females
< 25	Persons aged under 25
:	Data not available

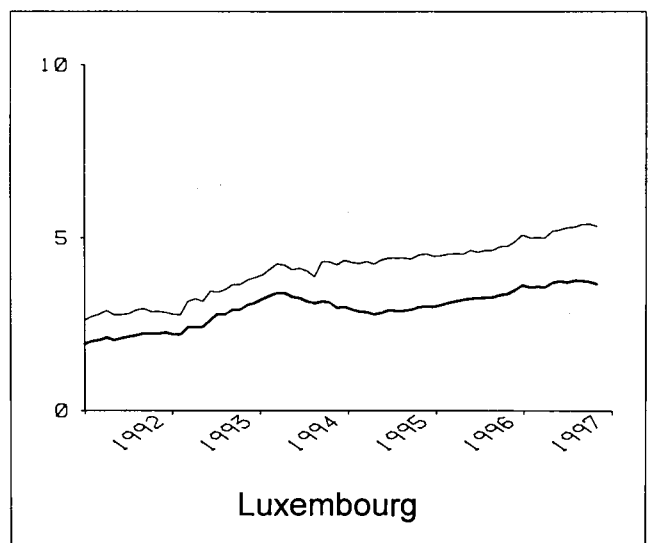
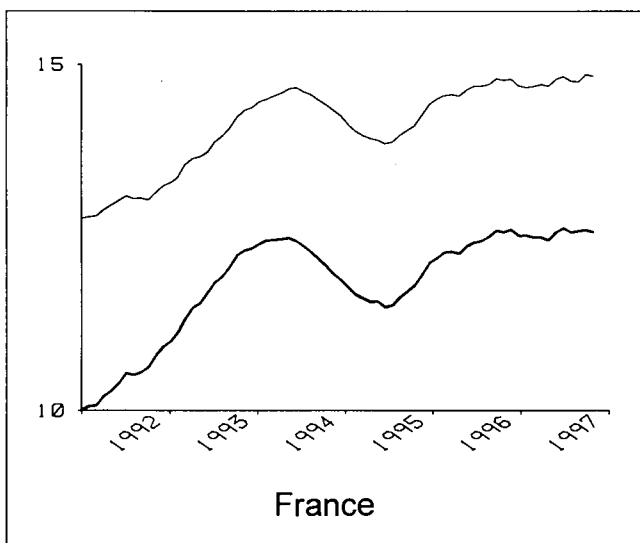
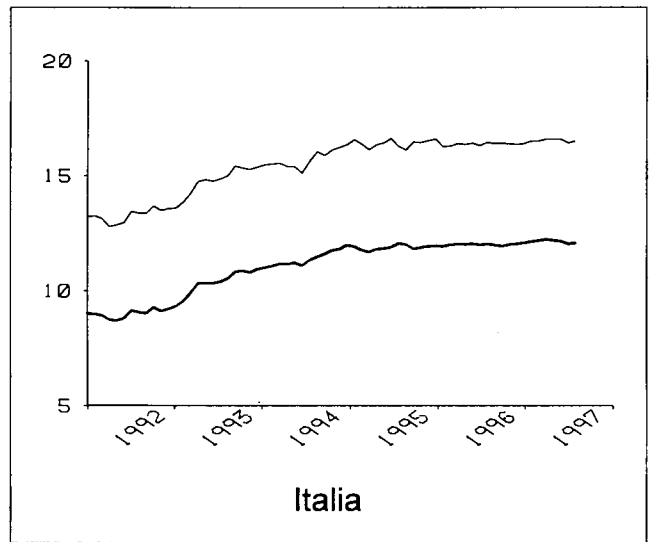
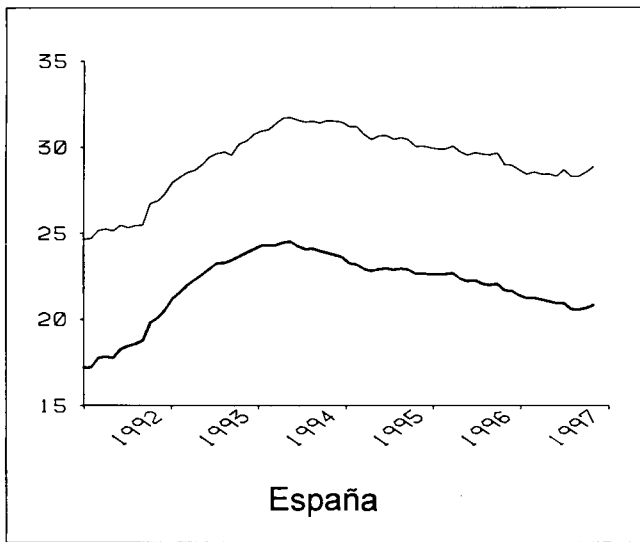
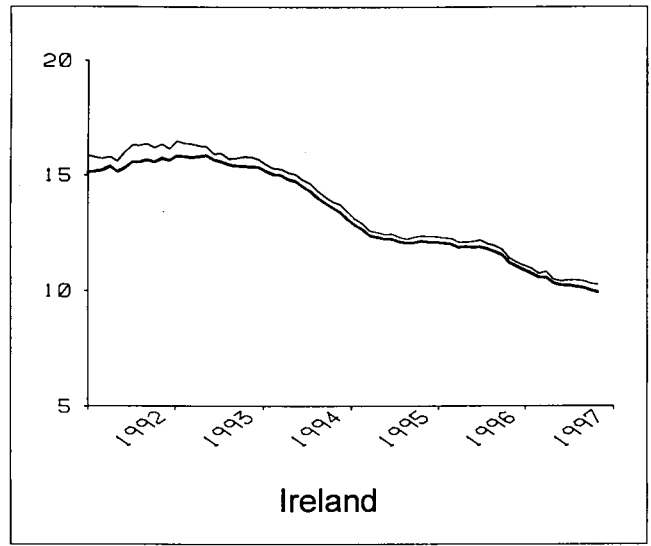
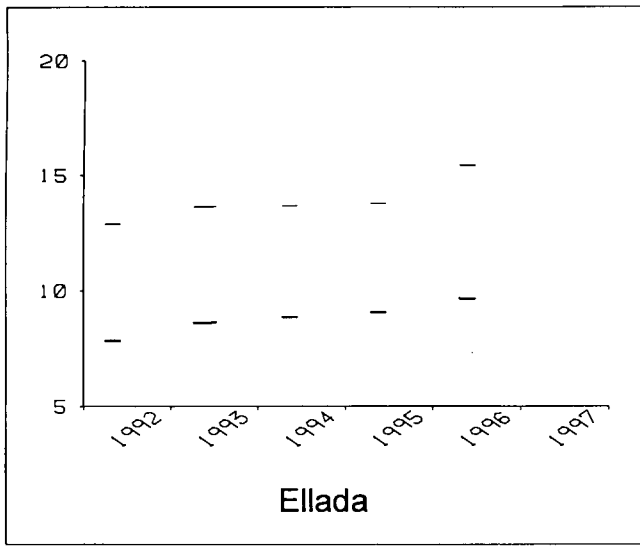
Unemployment rates, seasonally adjusted (%)



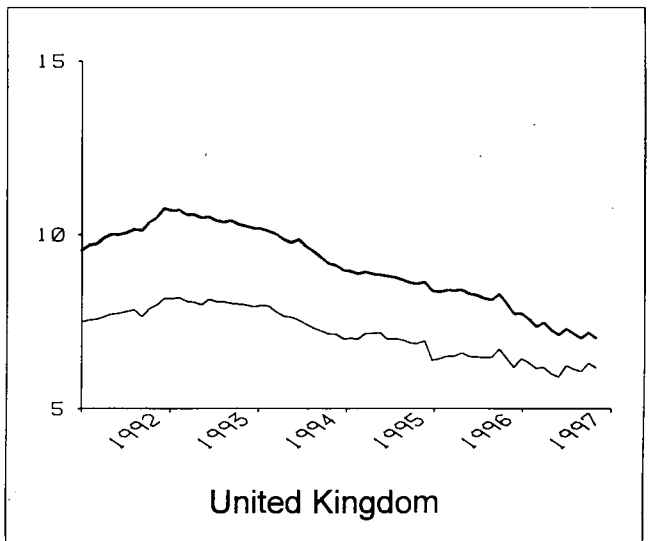
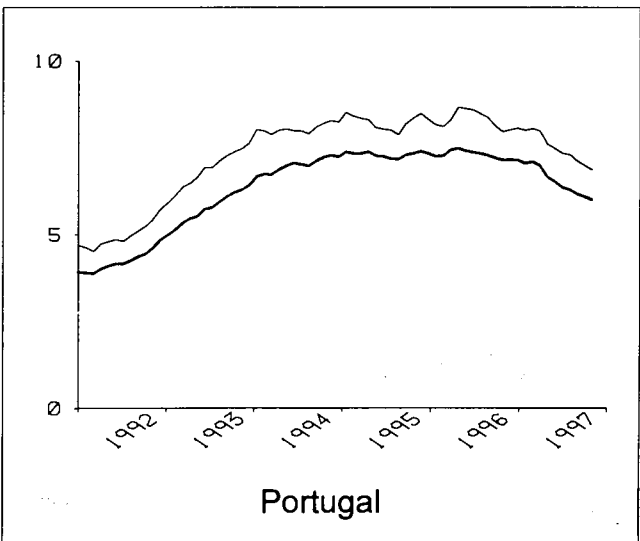
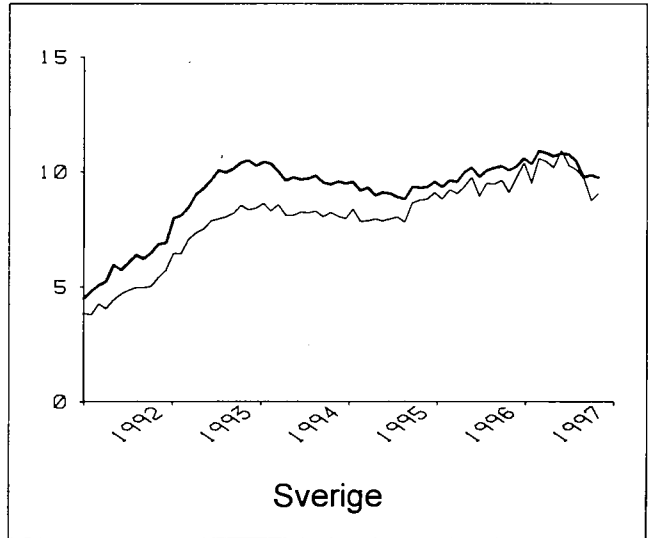
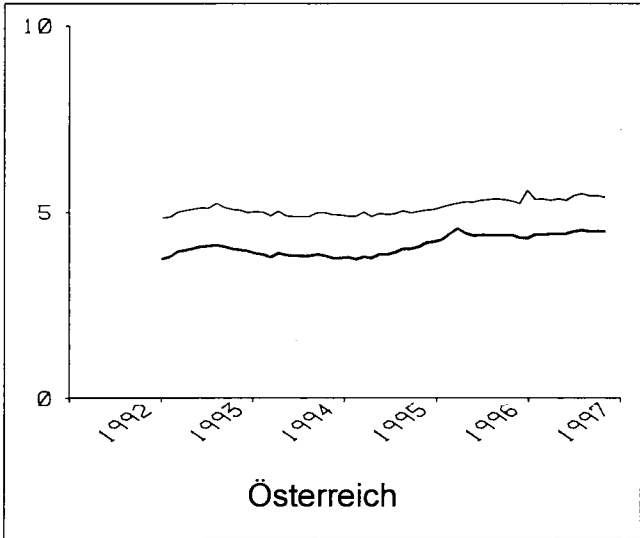
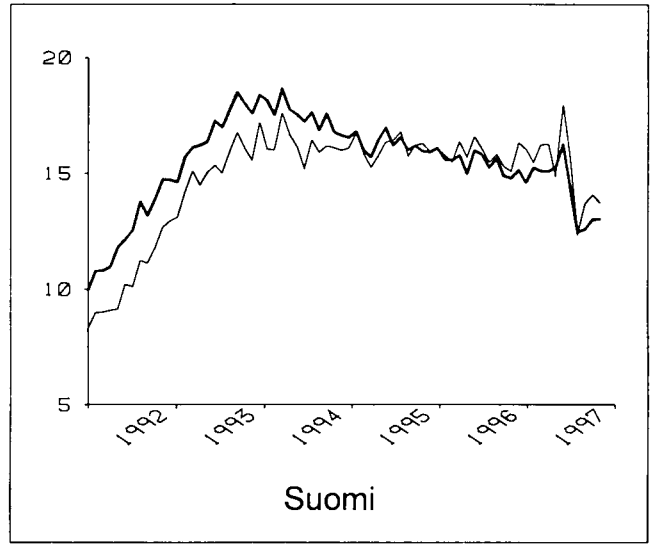
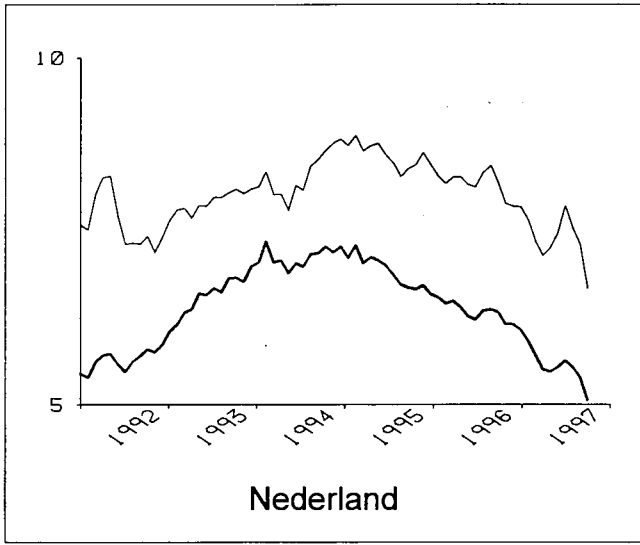
— Total

— Females

Unemployment rates, seasonally adjusted (%)



Unemployment rates, seasonally adjusted (%)



— Total

— Females

Unemployment rates, seasonally adjusted

(%)



	EUR 15	Belgique/ België	Danmark	Deutschland	Ellada	España	France	Ireland	Italia	Luxembourg	Nederland	Österreich	Portugal	Suomi	Sverige	United Kingdom	USA	Japan
Total																		
Males and females																		
1995.10	10.8	10.1	7.1	8.4	:	22.7	11.8	12.1	11.9	3.0	6.7	4.1	7.3	15.9	9.3	8.6	5.5	3.2
1996.10	10.8	9.6	6.6	9.0	:	21.7	12.6	11.2	12.0	3.4	6.2	4.4	7.1	14.8	10.1	8.0	5.2	3.4
1997.06	10.8	9.6	6.1	9.7	:	20.9	12.6	10.2	12.0	3.7	5.6	4.5	6.4	14.3	10.8	7.3	5.0	3.4
1997.07	10.7	9.6	6.4	9.7	:	20.6	12.6	10.2	12.1	3.8	5.5	4.5	6.3	12.5	10.5	7.2	4.9	3.4
1997.08	10.7	9.6	6.3	9.9	:	20.6	12.6	10.1	:	3.8	5.4	4.5	6.2	12.6	9.8	7.0	4.9	3.4
1997.09	10.7	9.5	5.8	10.0	:	20.7	12.6	10.0	:	3.7	5.1	4.5	6.1	13.0	9.9	7.2	4.9	3.5
1997.10	10.7	9.4	5.8	10.0	:	20.8	12.6	9.9	:	3.7	:	4.5	6.0	13.0	9.8	7.0	4.7	:
Males																		
1995.10	9.5	7.9	5.7	7.4	:	18.0	9.9	12.0	9.2	2.1	5.4	3.3	6.5	15.6	9.8	9.9	5.4	3.2
1996.10	9.6	7.4	5.2	8.4	:	17.1	10.7	11.1	9.3	2.6	4.9	3.7	6.5	14.5	11.0	9.3	5.2	3.4
1997.06	9.4	7.6	4.8	9.0	:	16.0	10.8	10.1	9.4	2.8	4.0	3.7	5.5	13.2	11.2	8.2	5.0	3.3
1997.07	9.3	7.5	4.8	9.0	:	15.7	10.7	10.0	9.4	2.9	4.1	3.8	5.4	12.6	10.8	8.0	4.8	3.4
1997.08	9.2	7.5	4.7	9.1	:	15.6	10.8	9.9	:	2.8	4.0	3.7	5.4	11.6	9.8	7.8	4.8	3.4
1997.09	9.3	7.5	4.4	9.2	:	15.6	10.7	9.8	:	2.7	3.9	3.8	5.4	12.0	10.9	7.9	4.8	3.6
1997.10	9.3	7.4	4.4	9.2	:	15.7	10.7	9.7	:	2.7	:	3.8	5.3	12.4	10.4	7.7	4.8	:
Females																		
1995.10	12.5	13.1	8.8	9.7	:	30.0	14.1	12.4	16.4	4.5	8.5	5.0	8.3	16.3	8.8	6.9	5.7	3.2
1996.10	12.5	12.6	8.2	9.8	:	29.0	14.8	11.4	16.4	4.8	7.9	5.3	7.9	15.1	9.1	6.5	5.3	3.3
1997.06	12.6	12.5	7.7	10.6	:	28.7	14.8	10.4	16.4	5.3	7.9	5.4	7.3	15.5	10.3	6.2	5.0	3.5
1997.07	12.5	12.5	8.2	10.7	:	28.3	14.8	10.4	16.5	5.3	7.5	5.5	7.3	12.4	10.1	6.1	4.9	3.4
1997.08	12.5	12.5	8.2	10.9	:	28.3	14.7	10.4	:	5.4	7.3	5.4	7.1	13.7	9.7	6.1	5.0	3.4
1997.09	12.6	12.4	7.5	11.0	:	28.5	14.8	10.3	:	5.4	6.7	5.4	7.0	14.1	8.8	6.3	5.0	3.3
1997.10	12.6	12.3	7.5	11.0	:	28.8	14.8	10.2	:	5.3	:	5.4	6.8	13.7	9.1	6.2	4.6	:
Under 25 years																		
Males and females																		
1995.10	21.5	23.8	10.7	9.1	:	42.2	27.6	19.0	33.0	8.0	12.1	5.6	16.8	31.2	19.2	15.7	12.3	5.8
1996.10	21.8	22.5	9.5	10.0	:	41.1	29.3	17.5	33.5	9.3	11.3	6.1	16.2	26.7	20.3	15.6	11.7	6.8
1997.06	21.2	22.6	8.3	10.2	:	39.2	28.1	16.3	32.9	10.3	9.4	6.1	13.6	32.3	23.3	15.3	11.5	6.8
1997.07	20.9	22.1	8.5	10.4	:	38.4	27.8	16.3	32.9	10.6	9.4	6.2	13.6	24.7	21.1	15.1	11.2	6.3
1997.08	20.6	22.0	8.1	10.6	:	38.1	27.7	16.0	:	10.6	9.2	5.9	13.3	26.1	19.4	13.9	11.1	6.4
1997.09	21.2	22.4	7.5	10.8	:	38.3	28.0	15.6	:	10.3	8.3	5.9	13.1	26.7	22.2	16.0	11.1	6.5
1997.10	21.1	21.8	7.6	10.7	:	39.4	27.8	15.2	:	9.7	:	5.9	12.9	24.7	20.0	15.4	11.0	:

Unemployment rates, seasonally adjusted

(%)



	EUR 15	Belgique/ België	Danmark	Deutschland	Ellada	España	France	Ireland	Italia	Luxembourg	Nederland	Österreich	Portugal	Suomi	Sverige	United Kingdom	USA	Japan
Under 25 years																		
Males																		
1995.10	20.0	21.0	8.6	9.3	:	36.4	24.3	20.2	28.6	8.0	12.3	4.6	14.6	30.1	18.6	17.8	12.8	6.5
1996.10	20.5	18.9	7.8	10.8	:	35.5	26.5	18.2	29.0	10.3	10.7	5.1	13.6	23.4	23.1	17.9	12.4	6.9
1997.06	19.6	19.2	6.9	10.9	:	33.5	25.4	16.9	28.5	11.2	6.4	5.0	10.1	26.8	23.7	17.0	12.0	7.0
1997.07	19.4	18.6	6.9	11.1	:	32.5	25.2	16.8	28.5	11.7	7.7	5.0	10.1	25.3	21.0	16.8	11.8	6.4
1997.08	19.1	18.5	6.5	11.3	:	32.1	25.2	16.6	:	11.5	8.3	4.8	10.0	25.3	18.5	15.5	11.8	6.5
1997.09	19.6	18.9	6.0	11.5	:	32.1	25.1	16.0	:	11.0	8.1	4.8	9.9	24.7	25.2	17.2	12.0	6.9
1997.10	19.5	18.2	6.0	11.4	:	33.0	24.9	15.6	:	10.5	:	4.8	9.6	24.7	20.3	16.7	12.1	:
Females																		
1995.10	23.2	27.1	13.1	8.8	:	48.9	31.1	17.6	38.8	8.0	12.0	6.7	19.6	32.5	19.8	13.2	11.7	5.1
1996.10	23.4	27.0	11.5	9.2	:	47.8	32.4	16.8	39.2	8.2	12.0	7.1	19.6	30.9	17.2	12.9	11.0	6.7
1997.06	23.1	26.7	10.0	9.3	:	46.1	31.1	15.7	38.5	9.3	12.2	7.3	17.8	38.2	22.9	13.4	10.9	6.6
1997.07	22.7	26.3	10.3	9.5	:	45.5	30.6	15.7	38.5	9.3	11.0	7.5	17.9	24.1	21.1	13.1	10.5	6.2
1997.08	22.4	26.3	9.8	9.8	:	45.4	30.4	15.4	:	9.5	10.1	7.1	17.4	27.2	20.4	11.9	10.4	6.3
1997.09	22.9	26.6	9.2	10.0	:	45.7	31.1	15.0	:	9.4	8.4	7.1	17.2	28.8	18.9	14.6	10.2	6.1
1997.10	22.9	26.1	9.4	9.8	:	47.0	30.9	14.6	:	8.8	:	7.0	16.9	24.7	19.6	13.8	9.8	:
25 years and over																		
Males																		
1995.10	7.9	6.5	5.1	7.1	:	14.8	8.3	10.4	6.4	1.5	4.2	3.1	5.1	13.7	8.7	8.4	4.0	2.7
1996.10	8.1	6.2	4.6	8.1	:	13.9	9.0	9.7	6.6	1.7	4.0	3.5	5.3	13.4	9.4	7.6	3.8	2.9
1997.06	7.9	6.3	4.3	8.7	:	13.0	9.2	8.7	6.7	1.9	3.6	3.5	4.8	11.3	9.6	6.5	3.7	2.9
1997.07	7.9	6.4	4.4	8.8	:	12.8	9.2	8.6	6.7	1.9	3.5	3.6	4.7	10.9	9.5	6.3	3.5	3.0
1997.08	7.8	6.3	4.3	8.8	:	12.8	9.2	8.6	:	1.8	3.3	3.6	4.6	9.7	8.7	6.4	3.5	3.0
1997.09	7.8	6.3	4.1	8.9	:	12.8	9.2	8.6	:	1.9	3.2	3.6	4.6	10.5	9.1	6.1	3.5	3.1
1997.10	7.8	6.2	4.1	9.0	:	12.6	9.2	8.5	:	1.8	:	3.6	4.6	10.7	9.1	6.0	3.5	:
Females																		
1995.10	10.6	11.3	7.8	9.8	:	25.2	12.0	10.8	12.1	3.9	7.6	4.7	6.5	14.4	7.3	5.6	4.5	2.9
1996.10	10.6	10.8	7.5	9.9	:	24.3	12.6	9.9	12.1	4.2	6.9	4.9	6.1	13.3	8.1	5.2	4.2	2.7
1997.06	10.9	10.8	7.2	10.8	:	24.6	12.9	9.0	12.3	4.6	6.8	5.1	5.6	12.3	8.7	4.8	3.9	3.0
1997.07	10.8	10.8	7.8	10.8	:	24.2	12.8	9.0	12.4	4.6	6.7	5.1	5.6	10.9	8.7	4.7	3.9	3.0
1997.08	10.9	10.8	7.8	11.0	:	24.3	12.9	9.0	:	4.7	6.7	5.1	5.4	12.0	8.4	4.9	3.9	2.9
1997.09	10.8	10.6	7.1	11.1	:	24.5	12.9	9.0	:	4.7	6.3	5.1	5.3	12.1	7.5	4.6	3.9	2.8
1997.10	10.9	10.6	7.1	11.2	:	24.5	12.9	9.1	:	4.7	:	5.1	5.2	12.3	7.9	4.6	3.6	:

Unemployment rates, not seasonally adjusted

(%)



	EUR 15	Belgique/ België	Danmark	Deutschland	Ellada	España	France	Ireland	Italia	Luxembourg	Nederland	Österreich	Portugal	Suomi	Sverige	United Kingdom	USA	Japan
Total																		
Males and females																		
1995.10	10.7	10.3	6.8	8.0	:	22.7	12.1	11.9	12.1	3.1	6.7	3.9	7.4	15.5	9.1	8.5	5.2	3.2
1996.10	10.8	9.8	6.3	8.6	:	21.8	12.9	11.0	12.2	3.5	6.2	4.2	7.2	14.3	9.7	8.0	4.9	3.4
1997.06	10.5	9.1	5.7	9.3	:	21.1	11.9	10.2	11.7	3.3	5.4	3.7	6.2	14.7	11.1	7.2	5.2	3.3
1997.07	10.5	9.8	6.2	9.6	:	20.2	12.0	10.4	11.7	3.4	5.5	3.8	6.1	12.2	10.5	7.4	5.0	3.3
1997.08	10.5	10.0	6.4	9.7	:	20.1	12.4	10.3	:	3.4	5.4	3.8	6.0	11.9	9.9	7.4	4.8	3.4
1997.09	10.6	9.9	5.6	9.5	:	20.5	12.8	10.0	:	3.7	5.1	3.9	5.9	12.2	9.6	7.4	4.7	3.5
1997.10	10.6	9.6	5.6	9.5	:	20.8	12.9	9.8	:	3.8	:	4.3	6.0	12.5	9.4	7.0	4.4	:
Males																		
1995.10	9.3	8.1	5.2	6.8	:	18.0	10.1	11.8	9.2	2.2	5.3	2.7	6.4	15.2	9.6	9.8	4.9	3.2
1996.10	9.4	7.6	4.7	7.8	:	17.0	11.0	10.9	9.4	2.6	4.8	3.0	6.4	14.2	10.7	9.1	4.6	3.4
1997.06	9.1	7.1	4.3	8.6	:	16.1	10.0	10.0	9.1	2.4	3.9	2.9	5.4	12.5	11.3	8.2	5.0	3.2
1997.07	9.0	7.6	4.6	8.7	:	15.2	10.0	10.1	9.0	2.5	4.0	2.8	5.3	11.7	10.6	8.2	4.7	3.3
1997.08	9.0	7.8	4.6	8.7	:	15.2	10.4	10.0	:	2.5	3.9	2.8	5.2	10.5	9.6	8.0	4.4	3.4
1997.09	9.1	7.7	4.1	8.5	:	15.4	10.7	9.8	:	2.7	3.8	2.8	5.2	11.1	10.2	7.9	4.3	3.5
1997.10	9.0	7.5	4.0	8.5	:	15.5	10.9	9.6	:	2.7	:	3.1	5.2	12.0	10.1	7.5	4.3	:
Females																		
1995.10	12.6	13.4	8.7	9.5	:	30.3	14.6	12.2	16.8	4.7	8.7	5.4	8.6	15.7	8.5	7.0	5.5	3.2
1996.10	12.6	12.9	8.1	9.7	:	29.2	15.2	11.2	16.8	4.9	8.2	5.7	8.1	14.4	8.7	6.6	5.2	3.4
1997.06	12.4	11.9	7.4	10.4	:	29.0	14.2	10.5	16.0	4.9	7.5	4.9	7.0	16.9	10.9	6.0	5.4	3.4
1997.07	12.5	12.8	8.2	10.8	:	28.1	14.4	10.9	16.0	4.8	7.5	5.0	7.0	12.7	10.4	6.4	5.4	3.2
1997.08	12.6	13.2	8.5	10.9	:	27.7	14.8	10.8	:	4.9	7.4	5.1	6.9	13.4	10.3	6.5	5.3	3.4
1997.09	12.7	13.0	7.5	10.8	:	28.5	15.2	10.3	:	5.4	6.8	5.2	6.9	13.4	8.9	6.8	5.1	3.4
1997.10	12.7	12.6	7.4	10.8	:	29.0	15.2	10.1	:	5.5	:	5.8	7.0	13.1	8.6	6.3	4.5	:
Under 25 years																		
Males and females																		
1995.10	22.0	25.7	10.4	8.5	:	42.3	30.8	18.7	34.0	8.6	12.3	5.8	17.3	30.0	19.5	15.7	11.7	5.6
1996.10	22.4	24.4	9.2	9.4	:	41.3	32.7	17.3	34.4	10.1	11.5	6.3	16.6	24.7	21.3	15.7	11.0	6.5
1997.06	20.8	19.2	7.4	9.5	:	40.2	24.8	16.3	32.7	8.4	8.8	4.9	13.1	29.6	22.9	15.9	12.6	6.6
1997.07	20.6	23.2	7.9	10.8	:	37.5	25.4	16.7	31.9	9.0	9.7	5.0	13.0	18.9	17.3	16.7	11.4	6.1
1997.08	20.7	24.6	8.2	11.1	:	37.0	27.2	16.5	:	9.2	9.5	5.2	12.8	22.0	18.8	15.6	10.3	6.4
1997.09	21.6	25.0	7.5	10.8	:	38.3	30.3	15.8	:	10.8	8.5	5.5	12.9	24.2	22.2	16.4	10.9	6.6
1997.10	21.4	23.6	7.3	10.0	:	39.0	31.1	14.9	:	10.4	:	6.1	13.2	22.7	20.4	15.2	10.3	:

Unemployment rates, not seasonally adjusted

(%)



	EUR 15	Belgique/ België	Danmark	Deutschland	Ellada	España	France	Ireland	Italia	Luxembourg	Nederland	Österreich	Portugal	Suomi	Sverige	United Kingdom	USA	Japan
Under 25 years																		
Males																		
1995.10	20.2	22.8	8.0	8.3	:	36.3	27.1	19.8	29.3	8.4	11.9	3.9	14.8	27.8	18.3	17.5	11.9	6.1
1996.10	20.7	20.5	7.2	9.6	:	35.4	29.5	17.9	29.7	10.9	10.4	4.3	13.8	21.2	24.0	17.6	11.3	6.5
1997.06	19.2	16.0	6.1	10.2	:	34.3	21.8	16.7	28.5	9.0	5.8	3.6	10.0	23.4	22.9	17.9	12.7	6.9
1997.07	18.9	19.3	6.4	11.2	:	31.2	22.2	17.0	27.9	9.7	7.6	3.5	9.8	17.5	17.2	18.1	11.4	6.3
1997.08	19.0	20.6	6.5	11.4	:	30.8	24.2	16.9	:	9.8	7.9	3.5	9.6	19.5	17.7	17.0	10.6	6.8
1997.09	19.7	21.1	5.7	11.0	:	31.8	26.8	16.2	:	11.4	8.1	3.8	9.6	22.0	23.9	17.3	11.1	6.9
1997.10	19.4	19.8	5.5	10.2	:	32.2	27.8	15.3	:	11.1	:	4.0	9.7	22.4	20.3	16.2	11.1	:
Females																		
1995.10	24.1	29.0	13.1	8.8	:	49.3	34.7	17.4	39.9	8.8	12.7	7.9	20.4	32.8	20.9	13.4	11.5	5.0
1996.10	24.4	29.0	11.5	9.2	:	48.3	36.1	16.5	40.3	9.1	12.6	8.4	20.4	29.4	18.5	13.3	10.7	6.6
1997.06	22.7	23.1	9.0	8.8	:	47.3	28.1	15.9	38.0	7.7	11.7	6.2	16.9	35.7	22.8	13.6	12.5	6.4
1997.07	22.6	27.8	9.7	10.3	:	45.2	28.9	16.3	37.2	8.2	11.7	6.7	17.0	20.3	17.3	15.0	11.4	5.9
1997.08	22.8	29.4	10.2	10.8	:	44.5	30.5	16.1	:	8.5	11.1	6.9	16.7	25.2	20.1	14.0	10.0	5.9
1997.09	23.8	29.6	9.5	10.5	:	46.0	34.0	15.3	:	10.1	8.9	7.3	17.0	26.5	20.3	15.5	10.7	6.2
1997.10	23.7	28.1	9.3	9.8	:	47.0	34.6	14.4	:	9.7	:	8.2	17.4	23.0	20.6	14.1	9.5	:
25 years and over																		
Males																		
1995.10	7.7	6.4	4.7	6.6	:	14.8	8.2	10.2	6.3	1.5	4.1	2.6	4.9	13.7	8.5	8.3	3.6	2.8
1996.10	7.8	6.2	4.2	7.5	:	13.8	8.9	9.5	6.6	1.7	3.9	2.8	5.1	13.3	9.1	7.5	3.4	3.0
1997.06	7.7	6.1	4.0	8.4	:	12.9	8.8	8.6	6.4	1.7	3.6	2.7	4.7	10.3	9.6	6.4	3.4	2.8
1997.07	7.6	6.3	4.2	8.4	:	12.4	8.7	8.6	6.3	1.7	3.4	2.7	4.6	10.6	9.5	6.3	3.3	2.9
1997.08	7.6	6.4	4.2	8.4	:	12.5	8.9	8.6	:	1.7	3.3	2.7	4.5	9.3	8.5	6.4	3.2	3.0
1997.09	7.5	6.3	3.7	8.3	:	12.5	8.9	8.5	:	1.8	3.1	2.7	4.5	10.0	8.6	6.1	3.2	3.1
1997.10	7.5	6.2	3.7	8.3	:	12.5	9.0	8.4	:	1.8	:	2.9	4.4	10.7	8.9	5.9	3.1	:
Females																		
1995.10	10.6	11.3	7.7	9.6	:	25.4	11.9	10.6	12.3	3.9	7.7	4.9	6.6	14.0	6.9	5.6	4.4	2.9
1996.10	10.6	10.8	7.4	9.7	:	24.5	12.5	9.7	12.3	4.2	7.1	5.1	6.2	13.0	7.5	5.2	4.1	2.8
1997.06	10.7	10.5	7.1	10.6	:	24.7	12.5	9.0	12.0	4.4	6.5	4.6	5.4	12.9	9.2	4.5	3.9	2.9
1997.07	10.7	10.9	7.9	10.9	:	24.0	12.7	9.3	11.9	4.3	6.5	4.7	5.4	11.4	9.3	4.6	4.2	2.8
1997.08	10.8	11.1	8.1	11.0	:	23.7	12.9	9.4	:	4.3	6.5	4.7	5.3	12.0	9.0	5.0	4.3	2.9
1997.09	10.8	10.8	7.0	10.9	:	24.3	12.8	8.9	:	4.6	6.4	4.7	5.2	11.9	7.5	5.0	4.0	2.9
1997.10	10.8	10.6	7.0	11.0	:	24.6	12.8	8.9	:	4.8	:	5.3	5.3	12.1	7.2	4.7	3.6	:

Unemployment rates, annual averages

(%)



	EUR 15	Belgique/ Belgie	Danmark	Deutschland	Ellada	España	France	Ireland	Italia	Luxembourg	Nederland	Österreich	Portugal	Suomi	Sverige	United Kingdom	USA	Japan
Total																		
Males and females																		
1990	:	6.7	7.7	:	6.4	16.2	8.9	13.4	9.1	1.7	6.2	:	4.6	3.3	1.8	7.0	5.5	2.1
1991	8.2	6.6	8.4	5.6	7.0	16.4	9.5	14.8	8.8	1.7	5.8	:	4.0	7.2	3.3	8.8	6.7	2.1
1992	9.2	7.3	9.2	6.6	7.9	18.5	10.4	15.4	9.0	2.1	5.6	:	4.2	12.4	5.8	10.1	7.4	2.2
1993	10.7	8.9	10.1	7.9	8.6	22.8	11.7	15.6	10.3	2.7	6.6	4.0	5.7	16.9	9.5	10.4	6.8	2.5
1994	11.1	10.0	8.2	8.4	8.9	24.1	12.3	14.3	11.4	3.2	7.1	3.8	7.0	17.4	9.8	9.6	6.1	2.9
1995	10.7	9.9	7.2	8.2	9.2	22.9	11.7	12.3	11.9	2.9	6.9	3.9	7.3	16.3	9.2	8.7	5.6	3.1
1996	10.9	9.8	6.9	8.8	9.6	22.1	12.4	11.6	12.0	3.3	6.3	4.4	7.3	15.4	10.0	8.2	5.4	3.4
Males																		
1990	:	4.1	7.0	:	3.9	11.9	6.7	12.8	6.4	1.2	4.3	:	3.2	3.7	1.8	7.4	5.6	2.0
1991	6.9	4.3	7.5	4.6	4.4	12.3	7.4	14.2	6.2	1.3	4.1	:	2.8	8.6	3.6	9.9	7.0	2.0
1992	8.0	5.3	8.3	5.2	5.0	14.5	8.3	15.1	6.5	1.7	4.3	:	3.6	14.3	6.9	11.9	7.8	2.1
1993	9.7	6.9	9.6	6.6	5.7	19.1	10.0	15.4	7.8	2.2	5.6	3.1	4.8	18.5	11.1	12.3	7.1	2.4
1994	10.0	7.9	7.3	7.2	6.0	19.7	10.4	14.1	8.9	2.7	6.3	3.0	6.1	18.5	11.2	11.3	6.2	2.8
1995	9.4	7.8	5.9	7.1	6.2	18.2	9.8	12.1	9.2	2.1	5.7	3.1	6.5	16.4	10.1	10.1	5.6	3.1
1996	9.6	7.6	5.5	8.2	6.0	17.5	10.6	11.5	9.4	2.5	5.0	3.7	6.5	15.0	10.5	9.5	5.4	3.4
Females																		
1990	:	10.6	8.4	:	10.8	24.1	11.8	14.6	13.8	2.5	9.1	:	6.2	2.8	1.8	6.6	5.4	2.2
1991	10.0	10.0	9.5	7.0	11.8	23.9	12.2	15.9	13.2	2.3	8.4	:	5.4	5.6	2.9	7.4	6.3	2.2
1992	10.9	10.2	10.2	8.5	13.0	25.6	13.0	16.0	13.2	2.8	7.6	:	5.0	10.3	4.7	7.8	6.9	2.2
1993	12.2	11.8	10.8	9.6	13.6	29.3	13.8	16.0	14.8	3.4	7.9	5.0	6.8	15.3	7.7	8.1	6.5	2.6
1994	12.7	12.9	9.3	10.1	13.7	31.4	14.5	14.6	15.7	4.1	8.3	4.9	8.0	16.1	8.2	7.5	6.0	3.0
1995	12.5	12.9	8.9	9.6	14.1	30.5	14.0	12.5	16.4	4.4	8.6	5.0	8.2	16.2	8.2	7.0	5.6	3.2
1996	12.5	12.8	8.5	9.7	15.3	29.5	14.6	11.9	16.4	4.7	8.2	5.3	8.3	15.8	9.4	6.5	5.4	3.4
Under 25 years																		
Males and females																		
1990	:	15.3	11.4	:	21.5	32.3	19.3	19.4	27.4	3.8	8.6	:	10.0	7.0	4.5	10.8	11.1	4.3
1991	16.2	14.9	11.6	5.9	22.9	31.1	21.5	22.4	26.0	3.2	8.3	:	8.8	15.2	7.8	14.3	13.4	4.4
1992	18.1	16.2	12.7	6.4	25.1	34.6	23.3	24.4	27.1	4.0	8.5	:	10.1	26.4	13.6	16.7	14.2	4.5
1993	21.3	21.8	13.8	7.9	26.8	43.4	27.3	25.2	30.4	5.4	11.1	6.3	12.9	34.9	22.6	17.9	13.3	5.1
1994	22.0	24.2	11.0	8.7	27.7	45.0	29.0	22.8	32.3	7.3	11.4	5.7	15.1	35.3	22.6	17.0	12.5	5.5
1995	21.5	23.9	10.6	8.8	28.5	42.5	27.5	19.4	33.3	7.4	12.0	5.5	16.6	32.0	19.6	15.9	12.1	6.1
1996	21.9	22.9	10.6	9.9	31.0	41.9	28.9	18.2	33.5	9.1	11.5	6.0	16.7	29.4	21.1	15.5	12.0	6.7

Unemployment rates, annual averages

(%)



	EUR 15	Belgique/ België	Danmark	Deutschland	Ellada	España	France	Ireland	Italia	Luxembourg	Nederland	Österreich	Portugal	Suomi	Sverige	United Kingdom	USA	Japan
Under 25 years																		
Males																		
1990	:	11.0	11.3	:	14.4	26.2	15.8	20.4	23.3	3.2	7.5	:	8.4	7.8	4.6	11.9	11.6	4.5
1991	15.0	11.9	11.1	5.4	16.0	25.7	18.1	23.7	22.6	3.3	7.4	:	6.8	17.2	8.5	16.6	14.3	4.7
1992	17.2	14.3	12.2	5.8	17.4	29.9	20.1	25.8	23.4	4.2	8.5	:	9.1	28.4	15.9	19.7	15.3	4.7
1993	20.8	20.7	13.4	7.8	18.9	40.0	25.1	27.0	26.6	5.2	12.0	5.2	10.8	36.0	26.0	21.0	14.3	4.9
1994	21.3	22.6	10.6	8.8	19.7	40.9	26.2	24.7	29.0	7.5	12.2	4.5	13.5	36.2	25.3	19.7	13.2	5.7
1995	20.1	21.5	8.5	8.9	19.8	36.9	23.9	20.7	29.1	7.1	11.3	4.4	15.1	30.9	20.8	18.1	12.5	6.2
1996	20.6	19.4	8.8	10.5	21.4	36.2	26.0	19.0	29.2	9.9	10.8	5.0	14.2	28.9	21.7	18.0	12.6	6.8
Females																		
1990	:	19.9	11.5	:	29.9	39.7	23.0	18.2	32.4	4.6	9.6	:	11.9	6.2	4.5	9.6	10.6	4.1
1991	17.6	18.0	12.2	6.3	31.3	37.9	25.0	20.9	30.3	3.1	9.1	:	11.1	13.1	7.1	11.6	12.4	4.2
1992	19.1	18.2	13.3	7.0	34.3	40.6	26.8	22.8	31.7	3.7	8.6	:	11.2	24.2	11.1	13.0	13.0	4.2
1993	21.9	23.0	14.1	8.1	36.1	47.6	29.7	23.0	35.1	5.6	10.1	7.6	15.3	33.6	19.0	14.2	12.2	5.2
1994	22.8	26.0	11.6	8.6	37.0	50.1	32.0	20.6	36.4	7.2	10.7	7.0	17.0	34.3	19.8	13.7	11.6	5.4
1995	23.2	26.6	12.9	8.7	38.3	49.0	31.2	17.9	38.6	7.8	12.7	6.7	18.5	33.4	18.4	13.3	11.6	6.0
1996	23.5	27.2	12.6	9.2	41.1	48.7	32.1	17.3	38.9	8.2	12.2	7.1	19.9	29.9	20.4	12.5	11.3	6.5
25 years and over																		
Males																		
1990	:	3.3	6.1	:	2.6	9.0	5.4	11.1	3.7	1.0	3.7	:	2.1	3.0	1.3	6.3	4.4	1.7
1991	5.5	3.5	6.7	4.5	2.9	9.6	6.0	12.1	3.4	1.0	3.4	:	2.0	7.3	2.7	8.4	5.7	1.7
1992	6.5	4.2	7.5	5.1	3.4	11.4	6.8	12.8	3.8	1.4	3.5	:	2.6	12.3	5.5	10.1	6.4	1.8
1993	7.9	5.3	8.8	6.4	4.0	15.0	8.2	12.9	4.9	1.9	4.5	2.8	3.7	16.0	9.0	10.5	5.8	2.1
1994	8.2	6.2	6.6	7.0	4.4	15.8	8.6	11.9	5.9	2.1	5.3	2.7	4.8	16.2	9.3	9.6	4.8	2.5
1995	7.9	6.2	5.3	6.9	4.6	14.8	8.2	10.4	6.3	1.5	4.8	2.9	5.0	14.5	8.7	8.6	4.3	2.7
1996	8.1	6.3	4.9	7.9	4.3	14.2	8.8	10.0	6.6	1.7	4.0	3.4	5.1	13.2	9.1	7.9	4.1	2.9
Females																		
1990	:	8.9	7.7	:	6.8	18.7	9.8	13.1	9.0	2.0	8.9	:	4.8	2.2	1.3	5.8	4.3	1.8
1991	8.3	8.6	8.8	7.1	7.8	19.3	10.0	13.9	8.8	2.1	8.1	:	4.2	4.4	2.1	6.3	5.1	1.8
1992	9.2	8.9	9.5	8.8	8.8	21.1	10.8	13.6	8.8	2.6	7.3	:	3.6	8.3	3.6	6.5	5.7	1.9
1993	10.3	10.0	10.0	9.9	9.3	24.1	11.5	13.6	10.3	2.9	7.3	4.5	5.2	12.7	6.0	6.6	5.4	2.2
1994	10.8	11.0	8.8	10.3	9.4	26.3	12.1	12.6	11.5	3.5	7.7	4.5	6.3	13.8	6.6	6.1	4.9	2.5
1995	10.6	11.1	8.0	9.8	9.8	25.7	11.8	10.9	12.0	3.7	7.5	4.6	6.5	14.0	6.8	5.7	4.4	2.7
1996	10.7	11.0	7.6	9.8	10.8	24.7	12.5	10.3	12.0	4.1	7.2	4.9	6.4	14.1	8.0	5.3	4.3	2.8

Number of unemployed, annual averages (in thousand)

1000



	EUR 15	Belgique/ België	Danmark	Deutschland	Ellada	España	France	Ireland	Italia	Luxembourg	Nederland	Österreich	Portugal	Suomi	Sverige	United Kingdom	USA	Japan
Total Males and females																		
1990	:	260.6	221.0	:	254.7	2435.5	2152.7	175.7	2123.9	2.7	413.2	:	213.2	82.2	82.7	2022.4	6873.7	1343.3
1991	13613.7	263.0	242.9	2195.2	276.3	2476.7	2323.3	197.5	2064.3	2.8	395.1	:	190.9	179.4	148.1	2528.4	8426.1	1359.2
1992	15321.2	295.4	265.8	2580.0	317.5	2810.0	2557.6	209.5	2097.5	3.6	394.4	:	199.3	304.0	260.4	2891.1	9384.3	1422.5
1993	17766.0	365.5	289.1	3090.3	351.5	3502.6	2908.8	215.1	2345.6	4.5	467.1	151.5	270.3	410.4	414.9	2979.0	8733.8	1656.7
1994	18454.7	416.2	228.8	3299.3	369.5	3727.4	3049.9	202.2	2570.9	5.4	516.3	146.2	332.6	420.0	426.2	2744.0	7996.5	1920.8
1995	17865.6	416.2	203.1	3192.6	385.8	3573.7	2924.9	177.1	2687.3	4.9	505.1	149.4	346.5	397.2	404.4	2497.5	7404.3	2099.2
1996	18198.7	410.2	194.6	3457.8	411.8	3523.7	3146.3	173.2	2732.5	5.6	467.3	165.5	348.1	376.1	439.3	2346.8	7235.5	2259.2
Males																		
1990	:	97.8	108.7	:	98.7	1162.0	907.5	111.3	954.7	1.3	176.2	:	85.7	49.0	43.2	1206.4	3799.0	773.3
1991	6732.3	104.0	115.7	1031.2	110.7	1197.3	1004.1	124.4	934.2	1.4	168.3	:	75.4	112.1	84.8	1615.6	4817.3	771.7
1992	7781.7	126.6	127.9	1163.0	126.9	1402.7	1132.6	131.8	964.6	1.8	179.7	:	95.0	182.7	160.7	1927.6	5379.7	820.0
1993	9300.4	166.4	144.9	1481.7	146.2	1849.1	1364.7	134.1	1116.6	2.4	237.9	67.3	125.8	232.8	253.9	1976.5	4932.4	947.5
1994	9568.3	193.6	109.7	1609.2	157.0	1900.9	1416.6	125.2	1260.3	2.8	267.9	63.7	160.7	232.6	254.7	1813.3	4367.7	1123.3
1995	9057.2	190.9	89.3	1577.0	160.9	1750.7	1328.0	109.0	1303.3	2.2	244.9	66.6	170.4	207.7	231.2	1625.2	3983.0	1230.0
1996	9273.7	186.6	84.8	1815.7	158.1	1713.6	1454.0	105.4	1330.5	2.7	215.0	77.8	169.5	189.8	241.8	1528.6	3879.4	1340.8
Females																		
1990	:	162.8	112.3	:	156.0	1273.5	1245.2	64.4	1169.2	1.4	237.1	:	127.5	33.2	39.6	816.0	3074.7	570.0
1991	6881.4	159.0	127.2	1164.1	165.6	1279.3	1319.1	73.1	1130.1	1.4	226.8	:	115.5	67.2	63.3	912.8	3608.8	587.5
1992	7539.5	168.8	137.9	1417.0	190.5	1407.4	1425.0	77.8	1132.9	1.7	214.6	:	104.3	121.3	99.7	963.5	4004.7	602.5
1993	8465.6	199.1	144.1	1608.6	205.3	1653.4	1544.1	81.0	1228.9	2.1	229.2	84.2	144.5	177.6	161.0	1002.5	3801.3	709.2
1994	8886.4	222.6	119.0	1690.1	212.5	1826.5	1633.3	77.0	1310.6	2.6	248.4	82.5	171.9	187.4	171.5	930.6	3628.8	797.5
1995	8808.4	225.2	113.8	1615.6	224.9	1823.0	1597.0	68.0	1384.0	2.7	260.2	82.8	176.1	189.5	173.2	872.3	3421.3	869.2
1996	8925.0	223.6	109.8	1642.1	253.6	1810.1	1692.3	67.8	1402.1	2.9	252.3	87.7	178.6	186.3	197.5	818.1	3356.1	918.3
Under 25 years Males and females																		
1990	:	75.7	63.1	:	115.5	976.4	642.2	57.0	1046.0	0.9	113.8	:	90.7	26.1	33.1	637.3	2369.6	361.7
1991	4418.9	73.4	63.1	349.4	121.5	921.0	678.8	66.0	1018.5	0.8	109.3	:	73.8	52.1	53.8	799.6	2766.6	385.8
1992	4700.6	78.7	65.5	353.5	132.5	999.9	709.1	69.3	1003.8	1.0	113.0	:	80.2	82.6	84.2	892.2	2898.8	399.2
1993	5284.0	102.5	68.5	414.5	142.4	1231.5	797.2	70.9	1035.3	1.2	143.9	38.7	97.7	103.4	125.2	911.4	2717.0	455.0
1994	5226.9	114.1	54.5	427.9	143.2	1244.0	798.4	63.9	1042.7	1.6	144.5	34.7	112.5	97.5	120.6	826.9	2692.6	499.2
1995	4942.2	107.8	54.2	400.5	144.6	1148.6	727.9	53.5	1059.9	1.5	148.9	33.2	116.0	88.3	102.3	755.0	2590.3	539.2
1996	4928.6	99.5	53.2	431.0	157.7	1124.9	763.3	50.6	1049.1	1.8	137.9	34.3	114.9	79.8	105.0	725.7	2545.2	584.2

Methodological notes

- The Eurostat unemployment rates are calculated according to the recommendations of the 13th International Conference of Labour Statisticians organised by the International Labour Office (ILO) in 1982. Unemployed persons are those persons aged 15 years and over who
 - are without work
 - are available to start work within the next two weeks
 - and have actively sought employment at some time during the previous four weeks.
- The unemployment estimates are based on the results of the European Community Labour Force Survey. It is carried out in the spring of each year. The use of the same definitions and concepts throughout the EU ensures comparability of the results between Member States.
- The **unemployment rate** is the number of unemployed as a percentage of the labour force (people living in collective households are excluded). The labour force is the total of the employed and the unemployed. Monthly estimates of the **number of unemployed** are derived by interpolating/extrapolating each year's Community Labour Force Survey results using the results of the national labour force surveys (see table A) and monthly indicators of unemployment (see table B). Monthly estimates of **employment** are obtained by
 - interpolating/extrapolating linearly the annual Community LFS results (Belgium, Denmark, Germany, Greece, France, Ireland, Luxembourg, Netherlands)
 - interpolating/extrapolating linearly the results of the national quarterly labour force surveys after adjustment to the Community LFS (Spain, Italy, Portugal, United Kingdom)
 - using the results of the national monthly labour force surveys (Finland, Sweden, USA, Japan).
- Estimates are made separately for males under 25, females under 25, males aged 25 years and over, and females aged 25 years and over. Totals are obtained by adding up these four basic categories.
- The figures for the four basic categories are seasonally adjusted using the multiplicative version of the X-11 method of the US Bureau of the Census. The reliability of the figures is adversely affected if deseasonalisation is performed on short series (such as Germany since the reunification) or where breaks occur (such as Sweden since 1993).
- From 1992, in some member States, the more restrictive application of the ILO guidelines introduces a break in the series. In such cases, no estimates are provided for the period before 1992.

Table A: Reference period of the last surveys used

Country	Community labour force surveys	National labour force surveys
B	1996Q2	-
DK	1996Q2	-
D	1996Q2	-
EL	1996Q2	-
E	1996Q2	1997Q3
F	1996Q2	-
IRL	1997Q2	-
I	1996Q2	1997Q3
L	1996Q2	-
NL	1996Q2	-
A	1996Q2	1995Q1
P	1996Q2	1997Q2
FIN	-	1997OCT
S	-	1997OCT
UK	1996Q2	1997Q3

NB: 1994Q2 = 2nd quarter of 1994

Table B: Monthly indicators of unemployment.

B : All persons in the following categories registered at employment offices: wholly unemployed persons in receipt of benefit, other unemployed persons compulsory registered and voluntarily registered persons without work. Series provided by the Office National de l'Emploi.

DK : Persons seeking full-time or part-time employment, whether or not they are members of an unemployment insurance fund.

Series provided by Danmarks Statistik.

D : Unemployed persons registered at public employment offices and seeking work as employees for at least 18 hours per week.

Series provided by the Bundesanstalt für Arbeit.

EL : No monthly indicator

E : Unemployed persons registered at public employment offices and seeking work as employees for 20 hours or more per week.

Series provided by the Ministerio de Trabajo y Seguridad Social.

F : Unemployed persons registered at the Agence de l'Emploi and seeking permanent full-time employment (demandeurs de catégorie 1).

Series provided by the Ministère du Travail, de l'Emploi et de la Formation Professionnelle.

IRL : Claimants for unemployment benefit, applicants for unemployment assistance and others seeking work who are registered with the employment services of the Department of Social Welfare. Excluded are persons seeking part-time employment.

Series provided by the Central Statistics Office.

I : Persons without work, persons seeking their first job, persons working part-time for less than 20 hours per week and workers on a fixed-term contract of not more than 4 months in any 12-month period, who are looking for a different job.

Series provided by the Ministero del Lavoro e della Previdenza Sociale.

L : Unemployed persons registered at employment offices and seeking work as employees for at least 20 hours per week.

Series provided by the Administration de l'Emploi.

NL : Persons registered at employment offices, between the ages of 16 and 64 years,

– who are without work or with work less than 12 hours a week and

– who are immediately available for paid employment for at least 12 hours a week or who found a job and will start working for at least 12 hours a week.

Series provided by the CBS.

A : All persons without work who are registered at an employment agency. The data are collected by the Arbeit-smarktservice and refer to the end of the month.

P : Persons registered at employment offices who are available for work within 30 days after registration.

Series provided by the Instituto de Emprego e Formação Profissional.

FIN : Number of unemployed in the monthly labour force survey.

S : Number of unemployed in the monthly labour force survey.

UK : Persons seeking full-time work and claiming unemployment benefit because they are out of work.

Series provided by the Office for National Statistics.

SHORT-TERM EMPLOYMENT TRENDS

Supplement to the Unemployment Monthly 12/1997

This edition of Eurostat's Unemployment Monthly contains a supplement on short-term (quarterly) employment trends in the Member States of the European Union, in Norway, Iceland, the US and Japan. This supplement is included in the Unemployment Monthly edition of the last month of each quarter.

Using the best available source for each country, the most recent employment trend for the economy as a whole is presented (see methodological notes on page 18). The employment data given in the table are taken from different sources. They show the *trends*, but should not be used for comparisons of *levels*.

Second quarter of 1997

There has been a slight acceleration in the growth of employment in the European Union. In the second quarter of 1997, employment in the 12 Member States which provide short-term data was overall 0.5% higher than in the same period in the previous year.

Employment continues to increase at a considerable rate in Spain (+3.0%), Luxembourg (+2.6%), Denmark (+2.5%) Finland (+2.3%), the Netherlands (+2.2%) and the United Kingdom (+1.8%).

In France (+0.7%), there is some sign of an upturn in employment, while in Italy and Austria the employment level hardly changed over this twelve-month period.

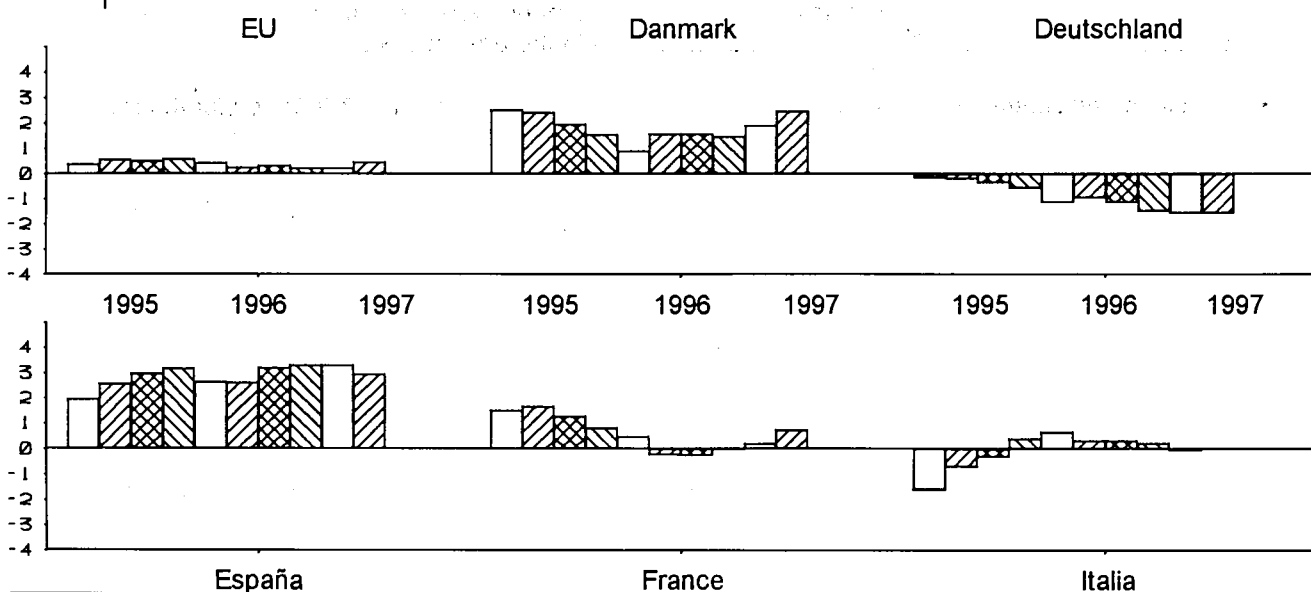
Employment continues to fall in Germany (-1.6%) and in Sweden (-1.3%).

Employment indicators

Not seasonally adjusted

	EU (1)	Belgique/ België	Danmark	Deutschland	Ελλάδα	España	France (2)	Ireland	Italia	Luxembourg
Absolute figures (1000)										
1994Q1	:	:	1938	34753	:	11635	13077	:	20020	205.3
1994Q2	:	3748	1984	34889	3786	11728	13110	1207	20147	207.6
1994Q3	:	:	1983	35071	:	11788	13185	:	20304	208.7
1994Q4	:	:	2057	35203	:	11770	13224	:	20005	210.3
1995Q1	:	:	1986	34700	:	11860	13273	:	19702	209.9
1995Q2	:	3793	2032	34818	3821	12027	13326	1262	20011	212.9
1995Q3	:	:	2021	34951	:	12137	13352	:	20240	214.3
1995Q4	:	:	2088	35003	:	12143	13333	:	20086	215.2
1996Q1	:	:	2004	34304	:	12174	13338	:	19833	215.4
1996Q2	:	3791	2064	34488	3876	12342	13297	1308	20079	218.4
1996Q3	:	:	2053	34561	:	12525	13319	:	20309	220.2
1996Q4	:	:	2119	34487	:	12544	13334	:	20132	222.1
1997Q1	:	:	*2042	33764	:	12576	13364	:	19824	221.9
1997Q2	:	3839	*2115	33952	:	12706	13396	:	20087	224.1

	Change over 4 quarters (%)									
1995Q1	0.4	:	2.5	-0.2	:	1.9	1.5	:	-1.6	2.2
1995Q2	0.6	1.2	2.4	-0.2	0.9	2.6	1.6	4.6	-0.7	2.6
1995Q3	0.5	:	2.0	-0.3	:	3.0	1.3	:	-0.3	2.7
1995Q4	0.6	:	1.5	-0.6	:	3.2	0.8	:	0.4	2.3
1996Q1	0.4	:	0.9	-1.1	:	2.6	0.5	:	0.7	2.6
1996Q2	0.3	-0.1	1.6	-0.9	1.5	2.6	-0.2	3.6	0.3	2.6
1996Q3	0.3	:	1.6	-1.1	:	3.2	-0.2	:	0.3	2.8
1996Q4	0.2	:	1.5	-1.5	:	3.3	0.0	:	0.2	3.2
1997Q1	0.2	:	1.9	-1.6	:	3.3	0.2	:	0.0	3.0
1997Q2	0.5	1.3	2.5	-1.6	:	3.0	0.7	:	0.0	2.6



(1) Excluding Belgique/België, Ellada and Ireland.
 (2) Seasonally adjusted
 * Eurostat estimation

Employment indicators

Not seasonally adjusted

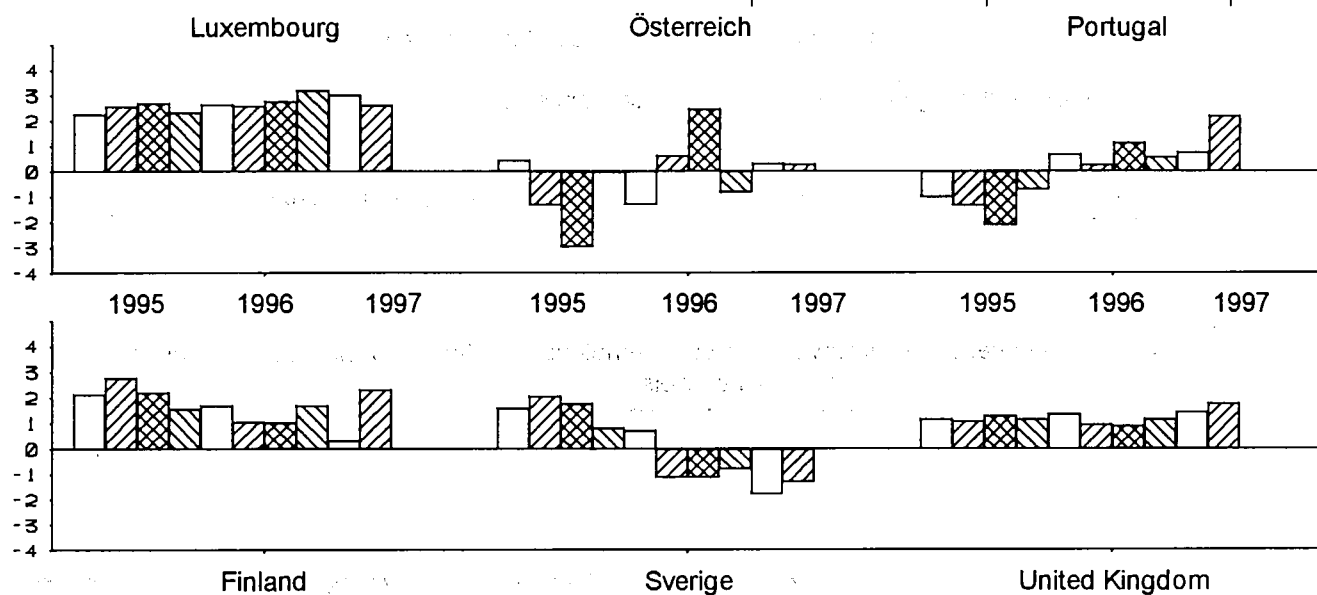
Nederland	Österreich	Portugal	Finland	Sverige	United Kingdom	Norge	Iceland	USA	Japan	
-----------	------------	----------	---------	---------	----------------	-------	---------	-----	-------	--

Absolute figures (1000)

5892	3011	4452	1980	3840	25533	1991	:	120416	63310	1994Q1
5960	3064	4488	2079	3939	25697	2022	137	122805	65350	1994Q2
5998	3138	4505	2109	3996	25944	2074	:	124257	64970	1994Q3
5996	3070	4453	2048	3931	25964	2052	139	124783	64500	1994Q4
5976	3024	4407	2022	3901	25830	2040	:	123295	63397	1995Q1
6077	3023	4427	2136	4019	25973	2066	140	124851	65200	1995Q2
6108	3045	4409	2156	4067	26272	2113	:	125882	65310	1995Q3
6141	3069	4421	2080	3964	26265	2097	144	125571	64443	1995Q4
6120	2984	4436	2056	3929	26179	2096	:	124085	63387	1996Q1
6225	3042	4439	2159	3974	26219	2134	141	126495	65383	1996Q2
6249	3120	4459	2178	4021	26508	2164	:	128084	65667	1996Q3
6277	3043	4446	2115	3932	26568	2154	144	128166	64990	1996Q4
6251	2993	4469	2063	3859	26556	2155	:	127132	64420	1997Q1
6365	3050	4536	2209	3923	26682	2201	140	129552	66283	1997Q2

Change over 4 quarters (%)

1.4	0.4	-1.0	2.1	1.6	1.2	2.5	:	2.4	0.1	1995Q1
2.0	-1.3	-1.4	2.8	2.0	1.1	2.2	2.2	1.7	-0.2	1995Q2
1.8	-3.0	-2.1	2.2	1.8	1.3	1.9	:	1.3	0.5	1995Q3
2.4	0.0	-0.7	1.6	0.8	1.2	2.2	3.6	0.6	-0.1	1995Q4
2.4	-1.3	0.7	1.7	0.7	1.4	:	:	0.6	0.0	1996Q1
2.4	0.6	0.3	1.1	-1.1	0.9	:	0.7	1.3	0.3	1996Q2
2.3	2.5	1.1	1.0	-1.1	0.9	:	:	1.7	0.5	1996Q3
2.2	-0.8	0.6	1.7	-0.8	1.2	:	0.0	2.1	0.8	1996Q4
2.1	0.3	0.7	0.3	-1.8	1.4	2.8	:	2.5	1.6	1997Q1
2.2	0.3	2.2	2.3	-1.3	1.8	3.1	-1.1	2.4	1.4	1997Q2



Methodological notes

The statistics given in this supplement are those which the National Statistical Institutes of the reporting countries consider best for the analysis of overall short-term employment trends. It should be noted that both the selected employment indicators and the statistical sources differ between countries. For this reason, the figures are appropriate for assessing the trends, but should not be used to compare levels of employment.

Indicators and statistical sources are as follows:

- DK: Full-time equivalents (domestic concept); armed forces included.
Source: ATP-statistics (ATP: labour market supplementary pension scheme).
- D: Total employment (including armed forces); domestic concept. Source: National Accounts.
- F: Employees (domestic concept) (all sectors except agriculture, public administration, education, health and social work).
Source: Data are based on information from the survey on activity and working conditions of the labour force (ACEMO) and on unemployment insurance data (UNEDIC).
- L: Total employment (including armed forces); domestic concept. Source: social security files.
- A: Employees (domestic concept). Persons on military service only included if they had a job before. Source: social security files.
- E, I, P, FIN, S, UK, IS, JAP:
Persons in employment living in private households (including armed forces); national concept.
Source: Labour Force Survey.
In the UK the concept of seasonal (not calendar) quarter is used, i.e. the third quarter, for example, refers to the months of June, July and August.
- NL: Total employment (including armed forces). Source : Labour accounts.
- NO : Employees (including armed forces) ; (national concept).
Source: Labour Force Survey.
- USA: Persons in employment living in private households (excluding armed forces); national concept.
Source: Current Population Survey.

Domestic concept : This covers persons employed in this Member State, irrespective of whether they live in this Member State or else where.

National concept : This covers employed persons resident in this Member State, irrespective of whether their place of employment is in this Member State or elsewhere.

For those countries for which no quarterly data is available (B, EL, IRL) the results of the European Labour Force Survey (carried out in spring of each year) are given in the table.

BELGIQUE/BELGIË

Moniteur belge/Belgisch Staatsblad
Rue de Louvain 40-42/Leuvenseweg 40-42
B-1000 Bruxelles/Brussel
Tél. (32-2) 552 22 11
Fax (32-2) 511 01 84

Jean De Lannoy
Avenue du Roi 202/Koningslaan 202
B-1060 Bruxelles/Brussel
Tél. (32-2) 538 51 69
Fax (32-2) 538 08 41
E-mail: jean.de.lannoy@infoboard.be
URL: <http://www.jean-de-lannoy.be>

Librairie européenne/Europese Boekhandel
Rue de la Loi 244/Wetstraat 244
B-1040 Bruxelles/Brussel
Tél. (32-2) 295 26 39
Fax (32-2) 735 08 60

DANMARK

J. H. Schultz Information A/S
Herstedvang 10-12
DK-2620 Albertslund
Tlf. (45) 43 63 23 00
Fax (45) 43 63 19 69
E-mail: schultz@schultz.dk
URL: <http://www.schultz.dk>

DEUTSCHLAND

Bundesanzeiger Verlag
Breite Straße 78-80
Postfach 10 05 34
D-50667 Köln
Tel. (49-221) 20 29-0
Fax (49-221) 202 92 78
E-mail: vertrieb@bundesanzeiger.de
URL: <http://www.bundesanzeiger.de>

ΕΛΛΑΔΑ/GREECE

G. C. Eleftheroudakis SA
International Bookstore
Panepistimiou 17
GR-10564 Athina
Tel. (30-1) 331 41 80/1/2/3
Fax (30-1) 323 98 21
E-mail: elebooks@netor.gr

ESPAÑA

Mundi Prensa Libros, SA
Castelló, 37
E-28001 Madrid
Tel. (34-1) 431 33 99
Fax (34-1) 575 39 98
E-mail: libreria@mundiprensa.es
URL: <http://www.mundiprensa.es>

Boletín Oficial del Estado

Trafalgar, 27
E-28010 Madrid
Tel. (34-1) 538 21 11 (Libros)/
384 17 15 (Suscripciones)
Fax (34-1) 538 21 21 (Libros)/
384 17 14 (Suscripciones)
E-mail: webmaster@boe.es
URL: <http://www.boe.es>

FRANCE

Journal officiel
Service des publications des CE
26, rue Desaix
F-75727 Paris Cedex 13
Tél. (33) 140 58 77 01/31
Fax (33) 140 58 77 00

IRELAND

Government Supplies Agency
Publications Section
4-5 Harcourt Road
Dublin 2
Tel. (353-1) 661 31 11
Fax (353-1) 475 27 60

ITALIA

Licosa SpA
Via Duca di Calabria, 1/1
Casella postale 552
I-50125 Firenze
Tel. (39-55) 64 54 15
Fax (39-55) 64 12 57
E-mail: licosa@fbcc.it
URL: <http://www.fbcc.it/licosa>

LUXEMBOURG

Messageries du livre SARL
5, rue Raiffeisen
L-2411 Luxembourg
Tél. (352) 40 10 20
Fax (352) 49 06 61
E-mail: mdl@pt.lu

Abonnements:

Messageries Paul Kraus
11, rue Christophe Plantin
L-2339 Luxembourg
Tel. (352) 49 98 88-8
Fax (352) 49 98 88-444
E-mail: mpk@pt.lu
URL: <http://www.mpk.lu>

NEDERLAND

SDU Servicecentrum Uitgevers
Externe Fondsen
Postbus 20014
2500 EA Den Haag
Tel. (31-70) 378 98 80
Fax (31-70) 378 97 83
E-mail: sdu@sdu.nl
URL: <http://www.sdu.nl>

ÖSTERREICH

**Manz'sche Verlags- und
Universitätsbuchhandlung GmbH**
Siebenbrunnengasse 21
Postfach 1
A-1050 Wien
Tel. (43-1) 53 16 13 34/40
Fax (43-1) 53 16 13 39
E-mail: auslieferung@manz.co.at
URL: <http://www.austria.EU.net:81/manz>

PORTUGAL

Imprensa Nacional-Casa da Moeda, EP
Rua Marquês de Sá da Bandeira, 16 A
P-1050 Lisboa Codex
Tel. (351-1) 353 03 99
Fax (351-1) 353 02 94, 384 01 32

Distribuidora de Livros Bertrand Ld.ª
Rua das Terras dos Vales, 4/A
Apartado 60037
P-2701 Amadora Codex
Tel. (351-1) 495 90 50, 495 87 87
Fax (351-1) 496 02 55

SUOMI/FINLAND

**Akatemien Kirjakauppa/Akademiska
Bokhandeln**
Pohjoisesplanadi 39/
Norra esplanaden 39
PL/PB 128
FIN-00101 Helsinki/Helsingfors
P./fin (358-9) 121 41
F./fax (358-9) 121 44 35
E-mail: akatilaus@stockmann.mailnet.fi
URL: <http://booknet.culnet.fi/aka/index.htm>

SVERIGE

BTJ AB
Traktorvägen 11
S-221 82 Lund
Tfn (46-46) 18 00 00
Fax (46-46) 30 79 47
E-post: btjeu-pub@btj.se
URL: <http://www.btj.se/media/au>

UNITED KINGDOM

**The Stationery Office Ltd
International Sales Agency**
51 Nine Elms Lane
London SW8 5DR
Tel. (44-171) 873 90 90
Fax (44-171) 873 84 63
E-mail: jill.speed@theso.co.uk
URL: <http://www.the-stationery-office.co.uk>

ISLAND

Bokabud Larusar Blöndal
Skólavörðustíg, 2
IS-101 Reykjavík
Tel. (354) 551 56 50
Fax (354) 552 55 60

NORGE

NIC Info A/S
Ostenjoveien 18
Boks 6512 Etterstad
N-0606 Oslo
Tel. (47-22) 97 45 00
Fax (47-22) 97 45 45

SCHWEIZ/SUISSE/SVIZZERA

OSEC
Stampfenbachstraße 85
CH-8035 Zürich
Tel. (41-1) 365 53 15
Fax (41-1) 365 54 11
E-mail: ulleimbacher@osec.ch
URL: <http://www.osec.ch>

BÄLGARIJA

Europress-Euromedia Ltd
59, Blvd Vilosha
BG-1000 Sofia
Tel. (359-2) 980 37 66
Fax (359-2) 980 42 30

ČESKÁ REPUBLIKA

NIS CR — prodejná
Konviktská 5
CZ-113 57 Praha 1
Tel. (420-2) 24 22 94 33, 24 23 09 07
Fax (420-2) 24 22 94 33
E-mail: nkposp@dec.nis.cz
URL: <http://www.nis.cz>

CYPRUS

Cyprus Chamber of Commerce & Industry
Griva-Digeni 38 & Deligiorgi 3
Mail orders:
PO Box 1455
CY-1509 Nicosia
Tel. (357-2) 44 95 00, 46 23 12
Fax (357-2) 36 10 44
E-mail: cy1691_eic_cyprus@vans.infonet.com

MAGYARORSZAG

Euro Info Service
Európa Ház
Margitsziget
PO Box 475
H-1396 Budapest 62
Tel. (36-1) 111 60 61, 111 62 16
Fax (36-1) 302 50 35
E-mail: euroinfo@mail.mata.vu
URL: <http://www.euroinfo.hu/index.htm>

MALTA

Miller Distributors Ltd
Malta International Airport
PO Box 25
LQA 05 Malta
Tel. (356) 66 44 88
Fax (356) 67 67 99

POLSKA

Ars Polona
Krakowskie Przedmiescie 7
Skr. pocztowa 1001
PL-00-950 Warszawa
Tel. (48-22) 826 12 01
Fax (48-22) 826 62 40, 826 53 34, 826 86 73
E-mail: ars_pol@bevy.hsn.com.pl

ROMÂNIA

Euromedia
Str. G-ral Berthelot Nr 41
RO-70749 Bucuresti
Tel. (40-1) 210 44 01, 614 06 64
Fax (40-1) 210 44 01, 312 96 46

SLOVAKIA

**Slovak Centre of Scientific and Technical
Information**
Námestie slobody 19
SK-81223 Bratislava 1
Tel. (421-7) 531 83 64
Fax (421-7) 531 83 64
E-mail: europ@tb1.sitk.stuba.sk

SLOVENIA

Gospodarski Vestnik
Založniška skupina d.d.
Dunajska cesta 5
SLO-1000 Ljubljana
Tel. (386) 611 33 03 54
Fax (386) 611 33 91 28
E-mail: belic@gvestnik.si
URL: <http://www.gvestnik.si>

TÜRKIYE

Dünya Infotel AS
İstiklal Cad. No: 469
TR-80050 Tünel-Istanbul
Tel. (90-212) 251 91 96
Fax (90-212) 251 91 97

AUSTRALIA

Hunter Publications
PO Box 404
3167 Abbotsford, Victoria
Tel. (61-3) 94 17 53 61
Fax (61-3) 94 19 71 54

CANADA

Subscriptions only/Uniquement abonnements:
Renouf Publishing Co. Ltd
5369 Chemin Canotek Road Unit 1
K1J 9J3 Ottawa, Ontario
Tel. (1-613) 745 26 65
Fax (1-613) 745 76 60
E-mail: renouf@fox.nstn.ca
URL: <http://www.renoufbooks.com>

EGYPT

The Middle East Observer
41, Sherif Street
Cairo
Tel. (20-2) 393 97 32
Fax (20-2) 393 97 32

HRVATSKA

Mediatrade Ltd
Pavla Hatza 1
HR-10000 Zagreb
Tel. (385-1) 43 03 92
Fax (385-1) 43 03 92

INDIA

EBIC India
3rd Floor, Y. B. Chavan Centre
Gen. J. Bhosale Marg.
400 021 Mumbai
Tel. (91-22) 282 60 64
Fax (91-22) 285 45 64
E-mail: ebic@grasbm01.vsnl.net.in

ISRAEL

ROY International
17, Shimon Hatarssi Street
PO Box 13056
61130 Tel Aviv
Tel. (972-3) 546 14 23
Fax (972-3) 546 14 42
E-mail: royil@netvision.net.il

Sub-agent for the Palestinian Authority:

Index Information Services
PO Box 19502
Jerusalem
Tel. (972-2) 627 16 34
Fax (972-2) 627 12 19

JAPAN

PSI-Japan
Asahi Sanbancho Plaza #206
7-1 Sanbancho, Chiyoda-ku
Tokyo 102
Tel. (81-3) 32 34 69 21
Fax (81-3) 32 34 69 15
E-mail: psijapan@gol.com
URL: <http://www.psi-japan.com>

MALAYSIA

EBIC Malaysia
Level 7, Wisma Hong Leong
18 Jalan Perak
50450 Kuala Lumpur
Tel. (60-3) 262 62 98
Fax (60-3) 262 61 98
E-mail: ebic-kl@mol.net.my

PHILIPPINES

EBIC Philippines
19th Floor, PS Bank Tower Sen.
Gil J. Puyat Ave. cor. Tindalo St.
Makati City
Metro Manila
Tel. (63-2) 759 66 80
Fax (63-2) 759 66 90
E-mail: eccpcom@globe.com.ph

RUSSIA

CCEC
60-Jel'ya Oktyabrya Av. 9
117312 Moscow
Tel. (70-95) 135 52 27
Fax (70-95) 135 52 27

SOUTH AFRICA

Safto
5th Floor Export House,
CNR Maude & West Streets
PO Box 782 706
2146 Sandton
Tel. (27-11) 883 37 37
Fax (27-11) 883 65 69

SOUTH KOREA

Kyowa Book Company
1 F1, Phyoung Hwa Bldg
411-2 Hap Jeong Dong, Mapo Ku
121-220 Seoul
Tel. (82-2) 322 67 80/1
Fax (82-2) 322 67 82
E-mail: kyowa2@ktnet.co.kr

THAÏLANDE

EBIC Thailand
Vanissa Building 8th Floor
29 Soi Chidlom
Ploenchit
10330 Bangkok
Tel. (66-2) 655 06 27
Fax (66-2) 655 06 28
E-mail: ebicbkk@ksc15.th.com

UNITED STATES OF AMERICA

Berman Associates
4611-F Assembly Drive
MD20706 Lanham
Tel. (800) 274 44 47 (toll free telephone)
Fax (800) 865 34 50 (toll free fax)
E-mail: query@berman.com
URL: <http://www.berman.com>

**ANDERE LANDER/OTHER COUNTRIES/
AUTRES PAYS**

**Bitte wenden Sie sich an ein Büro Ihrer
Wahl / Please contact the sales office of
your choice / Veuillez vous adresser au
bureau de vente de votre choix**

Price (excl. VAT) in Luxembourg: Single copy ECU 7 • Subscription ECU 84



OFFICE FOR OFFICIAL PUBLICATIONS
OF THE EUROPEAN COMMUNITIES

Catalogue number: CA-BH-97-012-EN-C