



Unemployment

5 1998 Monthly

March 1998

UNEMPLOYMENT IN THE EUROPEAN UNION

March 1998

Eurostat estimates that the seasonally-adjusted unemployment rate in the European Union was 10.4% at the end of March 1998, the same level as in the previous two months and 0.3% lower than in March 1997. The figure for the eleven Member States in the Economic and Monetary Union was 11.4%.

The 1997 Community Labour Force Survey results for Germany, Denmark, and Luxembourg have now been taken into account, causing the previously-published figures to be considerably revised, downwards in the cases of Denmark and Luxembourg, and upwards in the case of Germany. The figures for Finland and Sweden have also been revised.

STATISTICAL OFFICE OF THE EUROPEAN COMMUNITIES

L-2920 Luxembourg — Tél. 4301-1 — Télex COMEUR LU 3423
 B-1049 Bruxelles, rue de la Loi 200 — Tél. 299 11 11

The *unemployment data* presented in this bulletin are in line with definitions and recommendations of the International Labour Office. The figures have been estimated by Eurostat on the basis of the European Labour Force Survey and can be used for international comparisons.

In the third month of each quarter, the bulletin contains a 4-page *supplement on short-term employment trends*.

Detailed information on methods and sources can be found at the end of the sections on unemployment and employment.

For further information :

A. Persenaire	tel. +352 4301-32005
J. Recktenwald	tel. +352 4301-34103
R. Brandenbourger	tel. +352 4301-33272

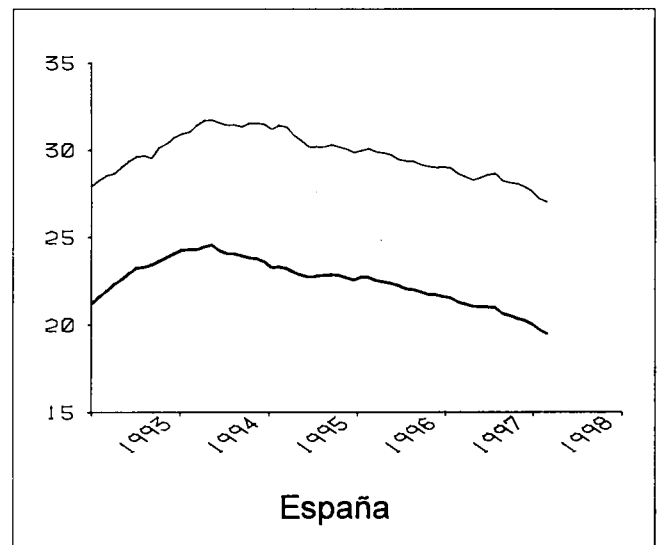
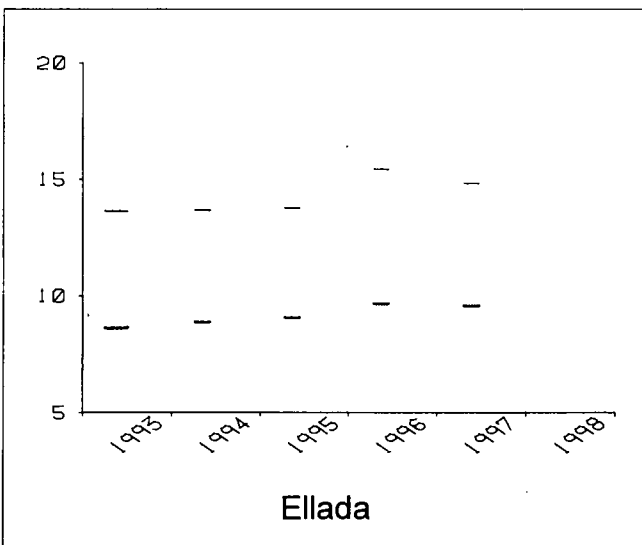
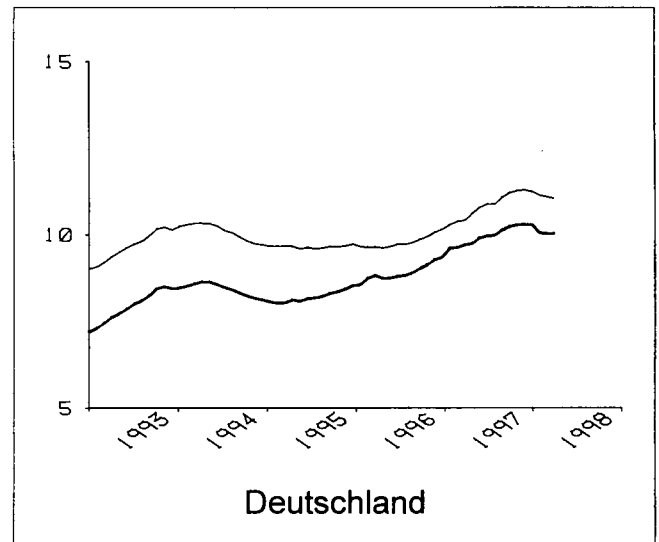
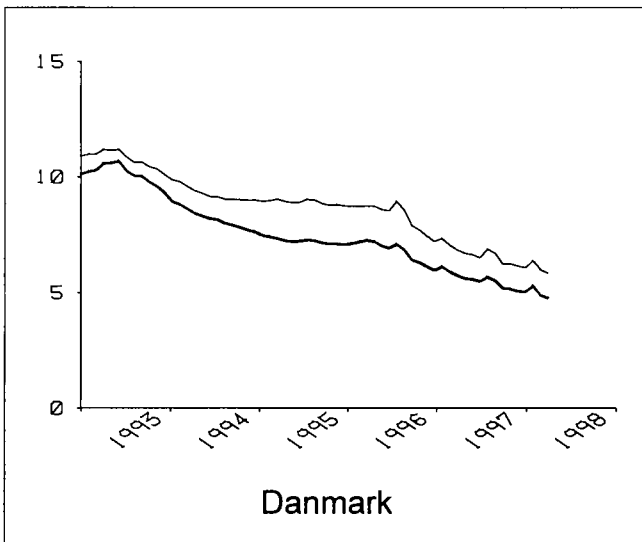
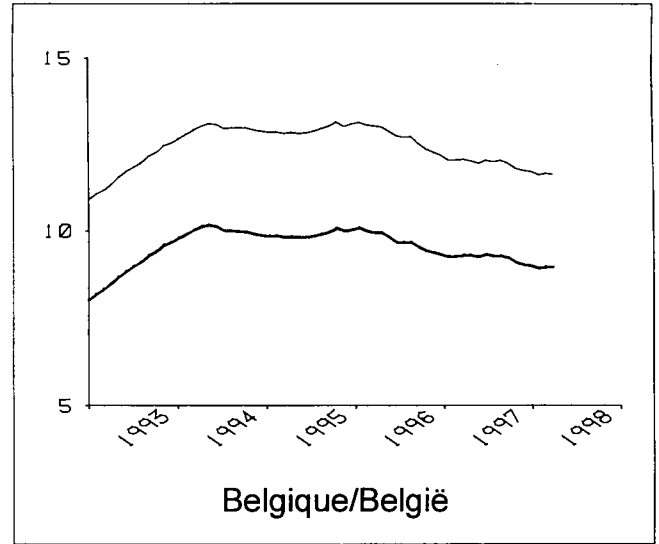
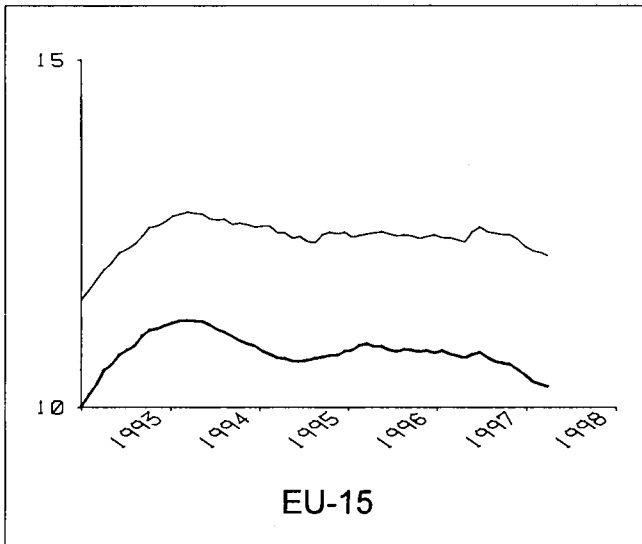
Table of contents :

Unemployment rates, seasonally adjusted :	
- graphs.....	3-5
- tables	6-7
Unemployment rates, not seasonally adjusted.....	8-9
Unemployment rates, annual averages.....	10-11
Number of unemployed, annual averages.....	12
Methodological notes (unemployment).....	13-14

Signs and abbreviations :

EU-15	All Member States of the European Union
T	Total
F	Females
< 25	Persons aged under 25
:	Data not available

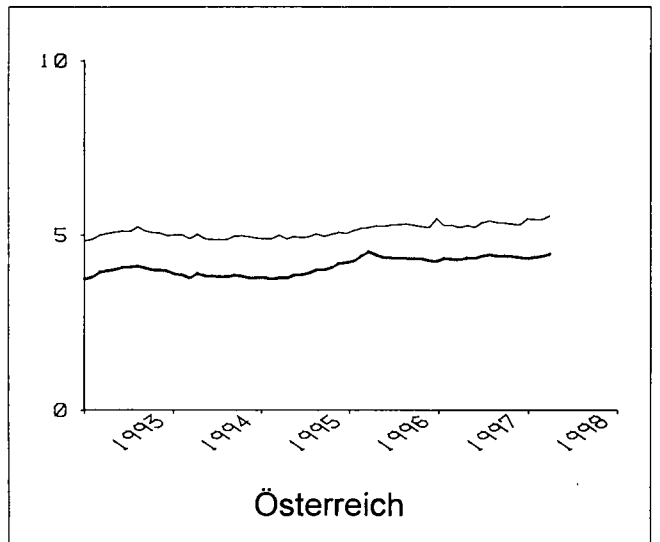
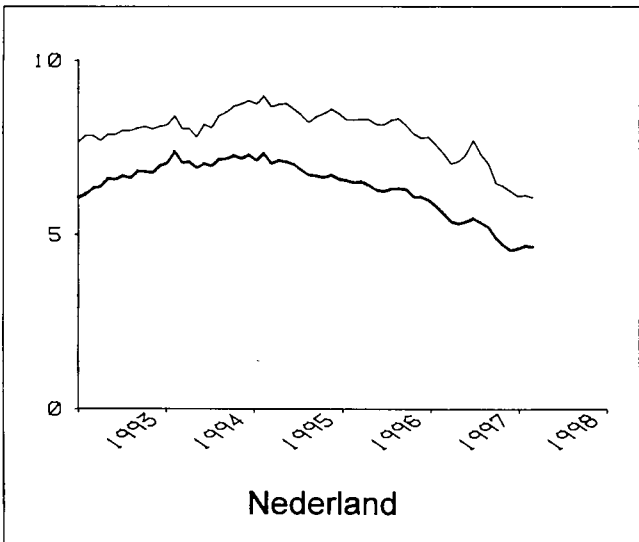
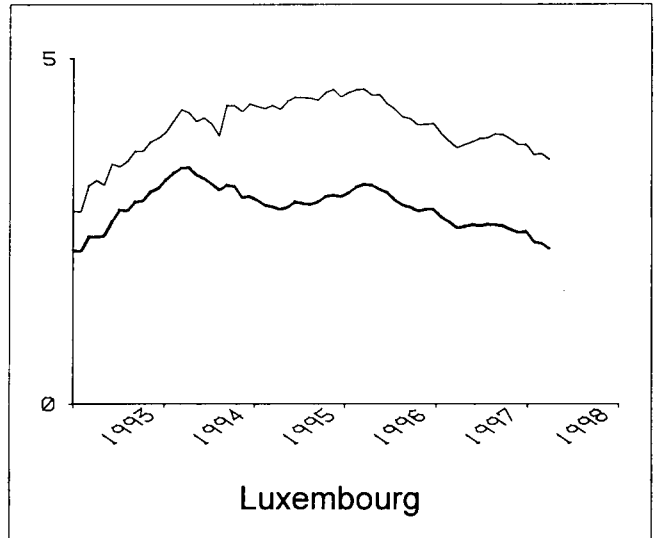
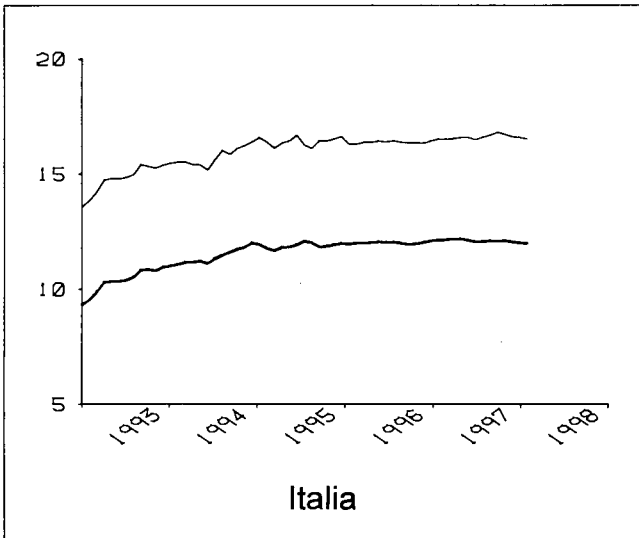
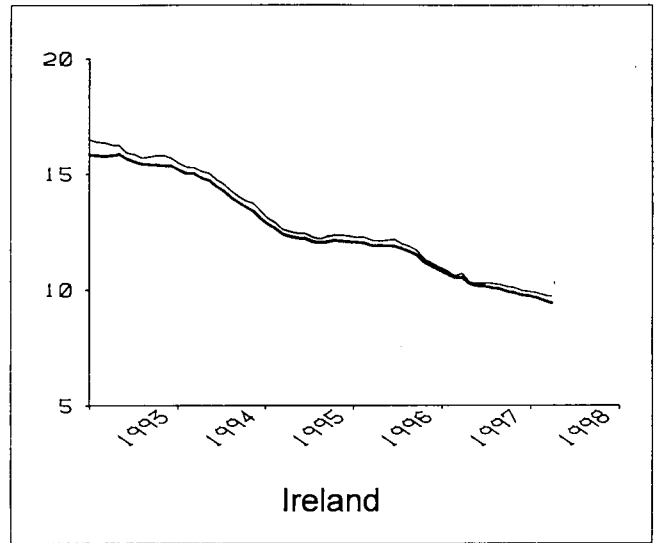
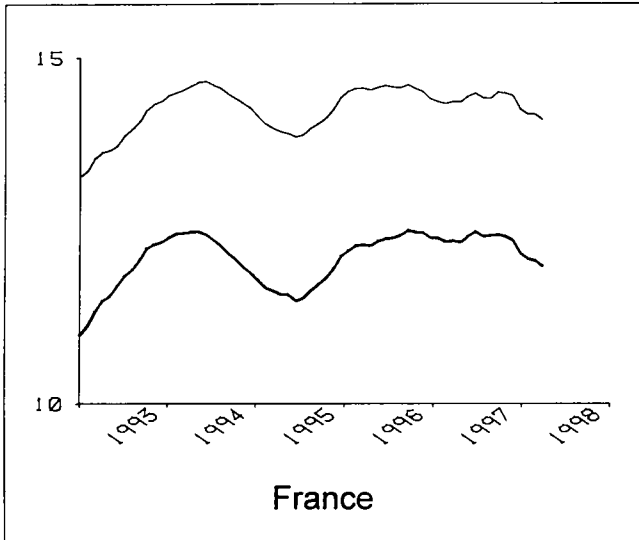
Unemployment rates, seasonally adjusted (%)



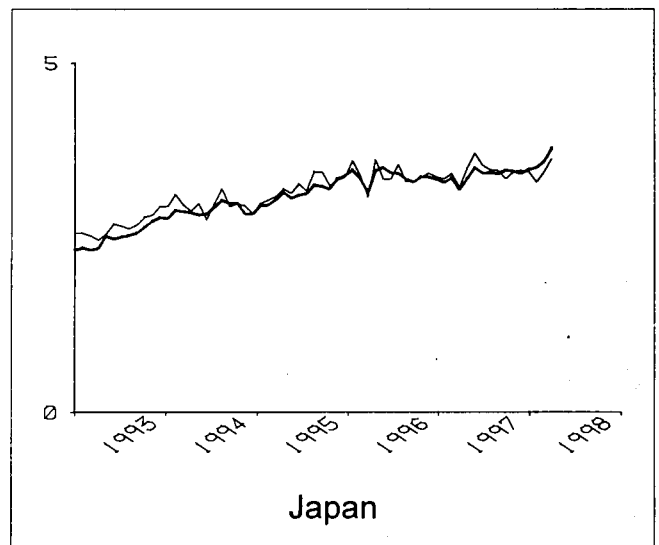
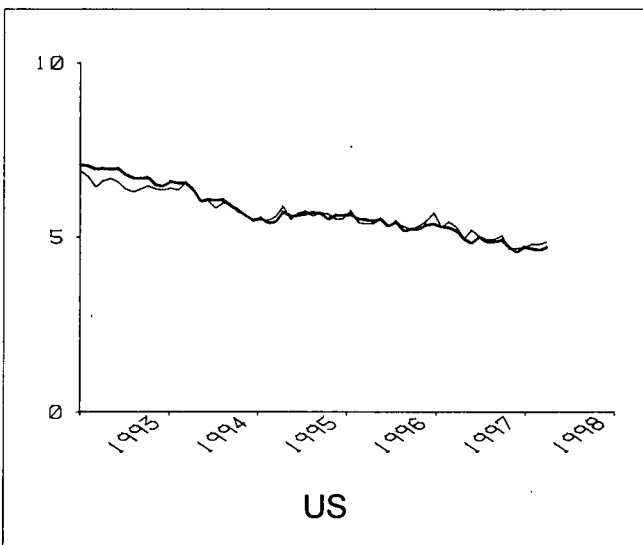
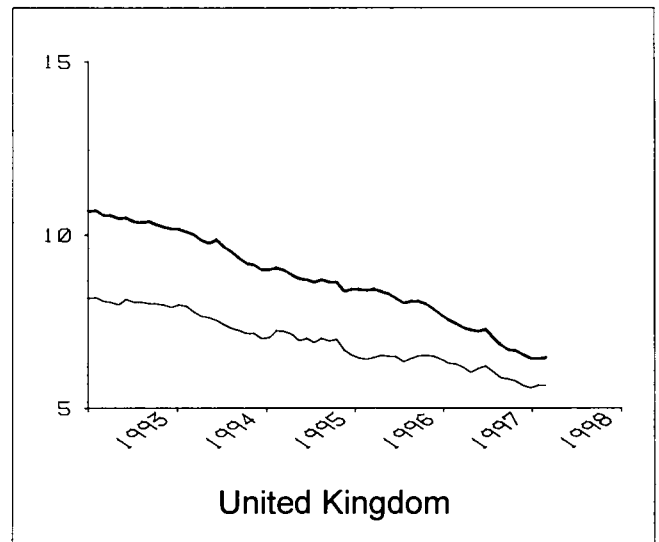
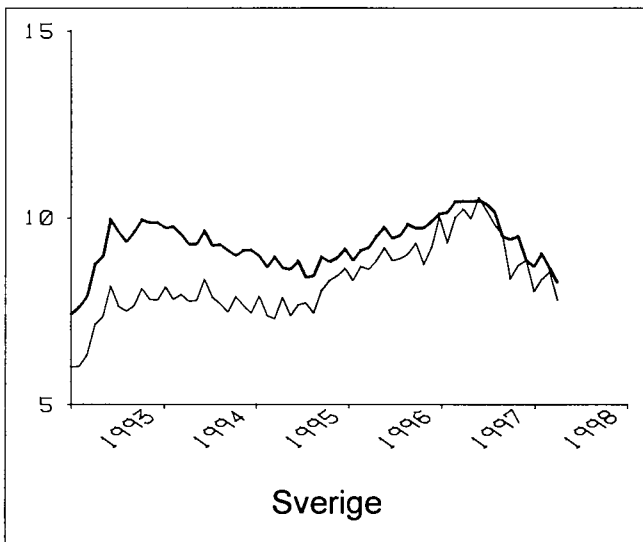
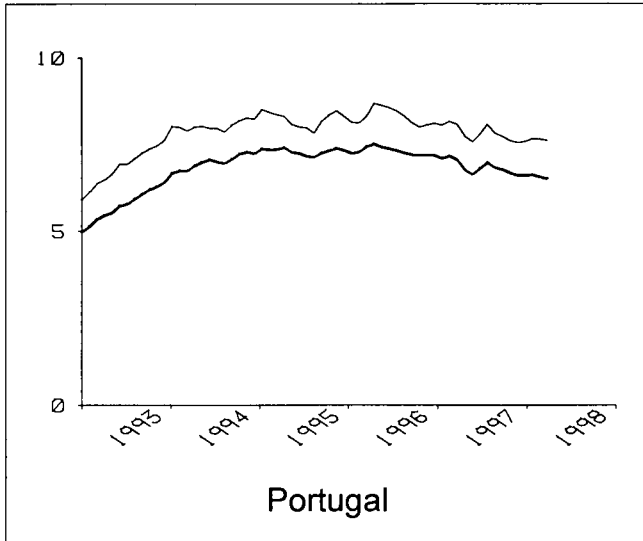
— Total

— Females

Unemployment rates, seasonally adjusted (%)



Unemployment rates, seasonally adjusted (%)



— Total

— Females



Unemployment rates, seasonally adjusted

(%)



	EU-15	Belgique/ België	Danmark	Deutschland	Ellada	España	France	Ireland	Italia	Luxembourg	Nederland	Österreich	Portugal	Suomi/ Finland	Sverige	United Kingdom	US	Japan
Total Males and females																		
1996.03	10.9	9.9	7.3	8.8	:	22.5	12.3	11.9	12.0	3.2	6.5	4.5	7.4	:	9.2	8.4	5.5	3.1
1997.03	10.7	9.3	5.7	9.7	:	21.2	12.4	10.5	12.2	2.5	5.4	4.3	7.1	:	10.4	7.3	5.2	3.2
1997.11	10.5	9.0	5.1	10.3	:	20.3	12.4	9.8	12.1	2.5	4.6	4.4	6.6	:	8.9	6.5	4.6	3.4
1997.12	10.5	9.0	5.0	10.3	:	20.0	12.2	9.7	12.0	2.5	4.6	4.3	6.6	:	8.7	6.4	4.7	3.5
1998.01	10.4	8.9	5.3	10.1	:	19.7	12.1	9.7	12.0	2.3	4.7	4.4	6.6	:	9.0	6.4	4.7	3.5
1998.02	10.3	9.0	4.9	10.0	:	19.5	12.1	9.5	:	2.3	4.6	4.4	6.6	:	8.7	6.5	4.6	3.6
1998.03	10.3	9.0	4.8	10.0	:	:	12.0	9.4	:	2.2	:	4.5	6.5	:	8.3	:	4.7	3.8
Males																		
1996.03	9.8	7.7	6.0	8.2	:	17.9	10.4	11.8	9.4	2.4	5.2	4.0	6.7	:	9.7	10.0	5.6	3.2
1997.03	9.5	7.3	4.8	9.2	:	16.6	10.7	10.4	9.5	1.8	4.2	3.6	6.2	:	10.6	8.2	5.1	3.2
1997.11	9.2	7.1	4.1	9.5	:	15.4	10.6	9.7	9.3	1.7	3.3	3.6	5.8	:	8.9	7.3	4.5	3.4
1997.12	9.1	7.1	4.2	9.6	:	15.2	10.4	9.6	9.2	1.7	3.5	3.4	5.8	:	9.3	7.1	4.7	3.5
1998.01	9.0	7.0	4.3	9.2	:	14.9	10.3	9.5	9.2	1.6	3.6	3.5	5.8	:	9.7	7.0	4.6	3.6
1998.02	8.9	7.0	3.9	9.2	:	14.6	10.3	9.4	:	1.5	3.6	3.6	5.7	:	8.8	7.1	4.5	3.7
1998.03	8.9	7.0	3.8	9.2	:	:	10.2	9.2	:	1.5	:	3.6	5.6	:	8.7	:	4.6	3.9
Females																		
1996.03	12.5	13.0	8.7	9.7	:	29.9	14.6	12.1	16.4	4.6	8.3	5.2	8.3	:	8.6	6.5	5.4	3.1
1997.03	12.4	12.1	6.8	10.4	:	28.4	14.4	10.7	16.5	3.7	7.0	5.2	8.1	:	10.2	6.2	5.3	3.2
1997.11	12.4	11.7	6.2	11.3	:	27.9	14.4	10.0	16.6	3.7	6.2	5.3	7.6	:	8.9	5.6	4.7	3.5
1997.12	12.3	11.7	6.1	11.2	:	27.6	14.2	9.9	16.6	3.7	6.1	5.5	7.6	:	8.0	5.6	4.7	3.4
1998.01	12.2	11.6	6.4	11.1	:	27.2	14.2	9.9	16.5	3.6	6.1	5.4	7.7	:	8.4	5.7	4.8	3.3
1998.02	12.2	11.7	6.0	11.1	:	27.0	14.2	9.8	:	3.6	6.1	5.4	7.6	:	8.5	5.6	4.8	3.4
1998.03	12.2	11.6	5.8	11.1	:	:	14.1	9.7	:	3.5	:	5.6	7.6	:	7.8	:	4.9	3.6
Under 25 years Males and females																		
1996.03	22.0	23.2	11.6	9.9	:	42.3	28.6	18.6	33.6	8.9	12.1	6.3	17.0	:	19.4	15.7	12.2	6.3
1997.03	21.5	23.3	8.7	10.6	:	39.9	29.4	16.5	33.3	7.5	9.8	6.7	15.4	:	21.9	14.4	11.7	6.4
1997.11	20.6	22.5	7.5	11.2	:	38.0	28.7	14.6	32.9	7.3	7.4	6.5	15.3	:	17.6	13.5	10.9	6.7
1997.12	20.5	22.4	7.3	11.0	:	37.6	28.0	14.4	32.9	7.3	7.7	6.6	15.2	:	18.0	13.6	10.5	7.2
1998.01	20.4	22.1	7.7	10.7	:	37.1	27.5	14.3	33.4	6.2	8.5	6.6	15.2	:	18.2	13.7	10.9	7.3
1998.02	20.3	22.4	7.1	10.5	:	36.7	27.3	14.0	:	6.3	8.2	6.7	15.2	:	17.7	13.6	10.6	7.1
1998.03	20.1	22.4	6.9	10.5	:	:	27.0	13.9	:	6.1	:	6.7	15.0	:	17.7	:	10.6	7.4

Unemployment rates, seasonally adjusted

(%)



	EU-15	Belgique/ België	Danmark	Deutschland	Ellada	España	France	Ireland	Italia	Luxembourg	Nederland	Österreich	Portugal	Suomi/ Finland	Sverige	United Kingdom	US	Japan
Under 25 years																		
Males																		
1996.03	20.9	19.7	9.9	10.6	:	36.6	25.6	19.5	29.5	9.4	11.5	5.6	15.1	:	19.8	18.5	13.0	6.7
1997.03	19.9	19.2	7.2	11.6	:	34.2	26.8	17.2	28.6	5.7	8.6	5.7	12.3	:	21.6	16.2	12.2	6.6
1997.11	19.0	18.4	5.9	12.1	:	31.8	25.9	15.2	28.6	5.1	5.9	5.5	11.6	:	17.4	15.0	11.6	6.4
1997.12	19.0	18.3	5.8	12.0	:	31.5	25.3	15.1	28.6	4.9	7.4	5.3	11.5	:	21.0	15.1	10.9	7.5
1998.01	18.9	18.1	6.1	11.6	:	31.2	24.8	15.0	29.1	4.0	8.5	5.3	11.6	:	18.2	14.9	11.4	8.0
1998.02	18.7	18.3	5.6	11.4	:	30.6	24.6	14.7	:	4.1	8.2	5.5	11.5	:	18.2	14.8	11.5	7.7
1998.03	18.6	18.4	5.3	11.4	:	:	24.3	14.5	:	4.0	:	5.3	11.2	:	18.6	:	11.1	8.1
Females																		
1996.03	23.4	27.3	13.6	9.1	:	49.1	31.9	17.6	38.8	8.2	12.7	7.1	19.4	:	18.9	12.3	11.2	6.0
1997.03	23.3	28.1	10.6	9.6	:	46.6	32.2	15.7	39.2	9.5	11.0	7.8	19.3	:	22.2	12.3	11.2	6.3
1997.11	22.4	27.5	9.5	10.0	:	45.5	31.6	13.8	38.3	9.8	8.9	7.5	19.8	:	17.9	11.8	10.1	6.9
1997.12	22.2	27.3	9.2	9.8	:	45.0	30.9	13.6	38.3	9.9	8.1	8.0	19.6	:	14.8	12.0	10.1	6.8
1998.01	22.3	27.0	9.6	9.7	:	44.4	30.5	13.5	38.9	8.8	8.5	7.9	19.6	:	18.3	12.3	10.4	6.5
1998.02	22.1	27.3	9.1	9.6	:	44.4	30.2	13.2	:	8.7	8.2	7.9	19.6	:	17.2	12.1	9.7	6.5
1998.03	22.0	27.3	8.9	9.5	:	:	29.9	13.1	:	8.6	:	8.1	19.5	:	16.8	:	10.0	6.7
25 years and over																		
Males																		
1996.03	8.1	6.5	5.2	7.9	:	14.6	8.7	10.2	6.5	1.6	4.2	3.7	5.2	:	8.5	8.4	4.2	2.7
1997.03	8.0	6.1	4.3	8.9	:	13.5	9.0	9.0	6.9	1.5	3.4	3.3	5.2	:	9.3	6.8	3.8	2.7
1997.11	7.8	5.9	3.8	9.2	:	12.6	9.0	8.5	6.5	1.4	2.9	3.4	4.8	:	7.9	5.9	3.2	3.0
1997.12	7.7	5.9	3.8	9.3	:	12.3	8.9	8.5	6.4	1.4	2.9	3.2	4.8	:	7.9	5.7	3.6	3.0
1998.01	7.6	5.9	4.0	9.0	:	12.1	8.9	8.4	6.4	1.3	2.8	3.2	4.8	:	8.6	5.6	3.3	3.1
1998.02	7.6	5.9	3.6	9.0	:	11.9	8.9	8.3	:	1.3	2.9	3.3	4.7	:	7.7	5.7	3.2	3.2
1998.03	7.6	5.9	3.5	9.0	:	:	8.8	8.2	:	1.2	:	3.3	4.6	:	7.6	:	3.4	3.4
Females																		
1996.03	10.6	11.2	7.7	9.7	:	25.1	12.4	10.6	12.0	3.9	7.3	4.8	6.5	:	7.3	5.2	4.2	2.5
1997.03	10.6	10.1	6.1	10.5	:	24.0	12.3	9.3	12.2	2.8	6.1	4.7	6.2	:	8.7	4.9	4.1	2.7
1997.11	10.8	9.9	5.5	11.5	:	23.8	12.5	8.9	12.6	2.8	5.7	4.9	5.5	:	7.8	4.4	3.6	2.9
1997.12	10.7	9.9	5.4	11.4	:	23.7	12.4	8.9	12.6	2.8	5.7	5.0	5.6	:	7.2	4.3	3.7	2.9
1998.01	10.6	9.8	5.7	11.3	:	23.3	12.3	8.8	12.5	2.9	5.6	5.0	5.7	:	7.3	4.4	3.7	2.7
1998.02	10.6	9.8	5.3	11.3	:	23.1	12.4	8.8	:	2.9	5.6	5.0	5.7	:	7.4	4.4	3.8	2.9
1998.03	10.6	9.8	5.2	11.3	:	:	12.3	8.8	:	2.8	:	5.1	5.6	:	6.6	:	3.9	3.1

∞ Unemployment rates, not seasonally adjusted

(%)



	EU-15	Belgique/ België	Danmark	Deutschland	Ellada	España	France	Ireland	Italia	Luxembourg	Nederland	Österreich	Portugal	Suomi/ Finland	Sverige	United Kingdom	US	Japan
Total																		
Males and females																		
1996.03	11.1	9.7	7.7	9.2	:	22.7	12.3	11.9	12.3	3.3	6.6	4.9	7.6	:	9.2	8.4	5.8	3.5
1997.03	10.9	9.1	6.1	10.1	:	21.3	12.4	10.5	12.5	2.6	5.4	4.6	7.2	:	10.5	7.3	5.5	3.5
1997.11	10.5	9.1	4.8	9.8	:	20.3	12.7	9.5	12.1	2.6	4.6	4.6	6.7	:	8.7	6.4	4.3	3.4
1997.12	10.5	9.1	4.9	10.2	:	20.2	12.5	9.8	12.0	2.6	4.7	4.9	6.7	:	8.5	6.3	4.4	3.2
1998.01	10.7	9.1	5.8	10.9	:	19.8	12.6	9.8	12.1	2.6	4.8	5.4	6.8	:	9.4	6.3	5.2	3.6
1998.02	10.7	9.0	5.2	10.9	:	19.6	12.4	9.6	:	2.5	4.8	5.3	6.8	:	9.1	6.4	5.0	3.7
1998.03	10.4	8.8	5.0	10.5	:	:	12.0	9.3	:	2.3	:	4.8	6.6	:	8.4	:	5.0	4.1
Males																		
1996.03	10.0	7.6	6.8	8.8	:	18.2	10.6	11.8	9.6	2.5	5.4	4.6	6.9	:	10.1	10.0	6.3	3.5
1997.03	9.8	7.2	5.4	9.9	:	16.8	10.8	10.4	9.8	1.9	4.3	4.2	6.4	:	11.2	8.2	5.7	3.4
1997.11	9.0	7.1	3.8	8.9	:	15.4	11.0	9.5	9.2	1.8	3.3	3.4	5.8	:	8.6	7.1	4.2	3.4
1997.12	9.2	7.2	4.0	9.5	:	15.4	10.9	9.7	9.2	1.8	3.6	4.4	5.8	:	9.1	7.0	4.5	3.3
1998.01	9.5	7.2	5.0	10.4	:	15.1	11.0	9.7	9.3	1.8	3.9	5.3	5.9	:	10.4	7.0	5.3	3.7
1998.02	9.4	7.1	4.5	10.5	:	14.9	10.8	9.5	:	1.7	3.8	5.2	5.9	:	9.3	7.1	5.1	3.8
1998.03	9.2	6.9	4.3	10.0	:	:	10.4	9.2	:	1.5	:	4.2	5.7	:	9.2	:	5.2	4.2
Females																		
1996.03	12.5	12.7	8.8	9.7	:	29.9	14.4	11.9	16.8	4.7	8.3	5.2	8.4	:	8.3	6.4	5.3	3.4
1997.03	12.4	11.7	6.9	10.5	:	28.5	14.3	10.5	17.0	3.7	7.0	5.2	8.2	:	9.8	6.1	5.2	3.6
1997.11	12.4	11.8	6.0	11.1	:	27.9	14.8	9.7	16.8	4.0	6.3	6.0	7.8	:	8.8	5.5	4.4	3.4
1997.12	12.3	11.8	5.9	11.2	:	27.8	14.5	10.0	16.4	3.9	6.2	5.5	7.7	:	7.9	5.4	4.2	3.1
1998.01	12.4	11.7	6.8	11.5	:	27.1	14.6	9.9	16.7	4.0	6.2	5.5	7.9	:	8.3	5.5	5.0	3.3
1998.02	12.4	11.6	6.1	11.4	:	26.9	14.4	9.8	:	3.9	6.0	5.4	7.8	:	8.9	5.6	4.8	3.5
1998.03	12.2	11.3	5.9	11.1	:	:	14.0	9.5	:	3.6	:	5.5	7.7	:	7.4	:	4.8	4.0
Under 25 years																		
Males and females																		
1996.03	21.9	21.6	12.5	10.4	:	42.7	27.2	18.4	34.0	9.1	11.9	6.4	17.2	:	20.4	15.2	12.5	8.1
1997.03	21.4	21.7	9.4	11.2	:	40.1	28.0	16.3	33.9	7.5	9.6	6.8	15.5	:	22.9	13.8	12.0	8.0
1997.11	20.9	23.3	7.2	10.4	:	38.0	32.3	14.2	33.1	8.1	7.8	7.3	15.7	:	17.6	12.8	10.3	6.1
1997.12	20.7	23.0	7.1	10.7	:	37.9	31.4	14.4	32.5	7.9	8.1	7.4	15.3	:	17.8	12.8	9.4	5.8
1998.01	20.6	22.4	8.4	11.4	:	37.5	27.5	14.6	33.5	7.2	8.8	7.8	15.6	:	19.8	13.0	11.7	7.0
1998.02	20.5	21.9	7.8	11.6	:	37.1	26.7	14.2	:	6.8	8.4	7.4	15.4	:	19.3	13.2	11.4	7.4
1998.03	20.0	20.9	7.5	11.1	:	:	25.6	13.7	:	6.1	:	6.7	14.8	:	18.6	:	10.9	9.2

Unemployment rates, not seasonally adjusted

(%)

	EU-15	Belgique/ België	Danmark	Deutschland	Ellada	España	France	Ireland	Italia	Luxembourg	Nederland	Österreich	Portugal	Suomi/ Finland	Sverige	United Kingdom	US	Japan
Under 25 years																		
Males																		
1996.03	21.1	18.5	11.1	11.7	:	37.3	24.7	19.4	29.7	10.0	12.1	6.3	15.4	:	21.9	18.3	14.1	8.5
1997.03	20.2	18.1	8.1	12.7	:	34.7	25.9	17.1	29.0	6.0	9.1	6.5	12.6	:	23.9	15.8	13.2	8.2
1997.11	19.0	19.2	5.4	10.9	:	31.7	29.5	14.8	28.8	5.6	6.2	5.4	11.8	:	17.1	14.1	11.1	6.3
1997.12	19.3	19.0	5.6	11.6	:	31.9	28.9	15.1	28.4	5.5	7.9	7.1	11.6	:	21.2	14.2	10.2	6.3
1998.01	19.2	18.5	7.0	12.7	:	31.7	25.4	15.4	29.0	4.7	9.3	8.1	11.8	:	20.3	14.2	12.9	7.8
1998.02	19.2	18.0	6.4	13.2	:	31.2	24.6	14.9	:	4.6	9.0	7.6	11.7	:	19.5	14.5	12.8	7.9
1998.03	18.7	17.3	6.1	12.5	:	:	23.4	14.4	:	4.1	:	6.0	11.2	:	20.6	:	12.2	9.9
Females																		
1996.03	22.9	25.4	14.1	8.9	:	49.1	29.9	17.2	39.5	8.1	11.7	6.5	19.5	:	18.6	11.5	10.8	7.6
1997.03	22.8	26.2	11.0	9.4	:	46.6	30.2	15.3	39.9	9.3	10.1	7.2	19.3	:	21.8	11.5	10.7	7.9
1997.11	23.0	28.3	9.4	9.8	:	45.6	35.3	13.4	38.6	11.0	9.4	9.3	20.4	:	18.1	11.3	9.5	6.0
1997.12	22.3	27.9	9.0	9.6	:	45.3	34.0	13.5	37.9	10.7	8.4	7.7	19.9	:	14.2	11.2	8.6	5.3
1998.01	22.2	27.1	10.2	9.8	:	44.6	29.8	13.7	39.1	10.1	8.4	7.5	20.1	:	19.3	11.5	10.5	6.1
1998.02	21.9	26.5	9.6	9.7	:	44.6	29.1	13.3	:	9.3	7.7	7.2	19.9	:	19.2	11.6	9.8	6.8
1998.03	21.5	25.4	9.2	9.3	:	:	28.0	12.8	:	8.4	:	7.5	19.2	:	16.4	:	9.5	8.4
25 years and over																		
Males																		
1996.03	8.4	6.5	5.8	8.5	:	14.9	9.0	10.3	6.7	1.7	4.3	4.3	5.4	:	8.7	8.4	4.9	2.8
1997.03	8.3	6.1	4.8	9.5	:	13.7	9.3	9.1	7.1	1.5	3.5	3.8	5.4	:	9.7	6.8	4.4	2.8
1997.11	7.6	5.9	3.5	8.7	:	12.6	9.0	8.4	6.5	1.4	2.9	3.1	4.8	:	7.7	5.8	3.0	3.0
1997.12	7.7	6.0	3.7	9.3	:	12.6	9.0	8.6	6.5	1.5	2.9	4.0	4.8	:	7.7	5.7	3.5	3.0
1998.01	8.1	6.0	4.6	10.1	:	12.3	9.5	8.6	6.7	1.5	2.9	4.8	4.9	:	9.3	5.7	4.0	3.2
1998.02	8.1	6.0	4.1	10.2	:	12.1	9.4	8.4	:	1.4	3.0	4.8	4.9	:	8.2	5.8	3.8	3.3
1998.03	7.9	5.9	3.9	9.7	:	:	9.1	8.2	:	1.3	:	3.9	4.8	:	8.0	:	3.9	3.5
Females																		
1996.03	10.8	11.1	7.6	9.8	:	25.2	12.6	10.5	12.4	4.0	7.5	4.9	6.6	:	7.1	5.4	4.2	2.7
1997.03	10.7	10.0	6.0	10.7	:	24.2	12.4	9.2	12.6	2.9	6.3	4.8	6.4	:	8.4	5.1	4.1	2.8
1997.11	10.7	9.8	5.3	11.2	:	23.8	12.3	8.7	12.7	3.0	5.7	5.4	5.7	:	7.7	4.3	3.5	2.9
1997.12	10.6	9.9	5.2	11.4	:	23.8	12.2	9.0	12.5	2.9	5.7	5.1	5.7	:	7.2	4.2	3.3	2.7
1998.01	10.8	9.9	6.1	11.7	:	23.2	12.9	8.9	12.7	3.1	5.7	5.2	5.8	:	7.2	4.3	4.0	2.8
1998.02	10.8	9.8	5.4	11.6	:	23.0	12.8	8.8	:	3.1	5.7	5.1	5.8	:	7.7	4.5	3.9	3.0
1998.03	10.7	9.7	5.2	11.4	:	:	12.5	8.6	:	2.9	:	5.2	5.7	:	6.4	:	3.9	3.3

10 Unemployment rates, annual averages

(%)



	EU-15	Belgique/ België	Danmark	Deutschland	Ellada	España	France	Ireland	Italia	Luxembourg	Nederland	Österreich	Portugal	Suomi/ Finland	Sverige	United Kingdom	US	Japan
Total																		
Males and females																		
1991	8.2	6.6	8.4	5.6	7.0	16.4	9.5	14.8	8.8	1.7	5.8	.	4.0	.	3.1	8.8	6.7	2.1
1992	9.2	7.3	9.2	6.6	7.9	18.5	10.4	15.4	9.0	2.1	5.6	.	4.2	.	5.6	10.1	7.4	2.2
1993	10.7	8.9	10.1	7.9	8.6	22.8	11.7	15.6	10.3	2.7	6.6	4.0	5.7	.	9.1	10.4	6.8	2.5
1994	11.1	10.0	8.2	8.4	8.9	24.1	12.3	14.3	11.4	3.2	7.1	3.8	7.0	.	9.4	9.6	6.1	2.9
1995	10.7	9.9	7.2	8.2	9.2	22.9	11.7	12.3	11.9	2.9	6.9	3.9	7.3	.	8.8	8.7	5.6	3.1
1996	10.8	9.7	6.8	8.9	9.6	22.2	12.4	11.6	12.0	3.0	6.3	4.3	7.3	.	9.6	8.2	5.4	3.4
1997	10.7	9.2	5.5	10.0	9.6	20.8	12.4	10.1	12.1	2.6	5.2	4.4	6.8	.	9.9	7.0	4.9	3.4
Males																		
1991	6.9	4.3	7.5	4.6	4.4	12.3	7.4	14.2	6.2	1.3	4.1	.	2.8	.	3.4	9.9	7.0	2.0
1992	8.0	5.3	8.3	5.2	5.0	14.5	8.3	15.1	6.5	1.7	4.3	.	3.6	.	6.6	11.9	7.8	2.1
1993	9.6	6.9	9.6	6.6	5.7	19.1	10.0	15.4	7.8	2.2	5.6	3.1	4.8	.	10.7	12.3	7.1	2.4
1994	10.0	7.9	7.3	7.2	6.0	19.7	10.4	14.1	8.9	2.7	6.3	3.0	6.1	.	10.8	11.3	6.2	2.8
1995	9.4	7.8	5.9	7.1	6.2	18.2	9.8	12.1	9.2	2.1	5.7	3.1	6.5	.	9.7	10.1	5.6	3.1
1996	9.6	7.6	5.5	8.2	6.1	17.6	10.6	11.5	9.4	2.2	5.0	3.6	6.5	.	10.1	9.5	5.4	3.4
1997	9.4	7.2	4.6	9.3	6.2	16.1	10.7	10.0	9.3	1.8	3.9	3.6	6.0	.	10.2	7.8	4.9	3.4
Females																		
1991	10.0	10.0	9.5	7.0	11.8	23.9	12.2	15.9	13.2	2.3	8.4	.	5.4	.	2.8	7.4	6.3	2.2
1992	10.9	10.2	10.2	8.5	13.0	25.6	13.0	16.0	13.2	2.8	7.6	.	5.0	.	4.4	7.8	6.9	2.2
1993	12.2	11.8	10.8	9.6	13.6	29.3	13.8	16.0	14.8	3.4	7.9	5.0	6.8	.	7.3	8.1	6.5	2.6
1994	12.7	12.9	9.3	10.1	13.7	31.4	14.5	14.6	15.7	4.1	8.3	4.9	8.0	.	7.8	7.5	6.0	3.0
1995	12.5	12.9	8.9	9.6	14.1	30.5	14.0	12.5	16.4	4.4	8.6	5.0	8.2	.	7.8	7.0	5.6	3.2
1996	12.5	12.7	8.3	9.8	15.2	29.5	14.5	11.8	16.4	4.3	8.1	5.3	8.3	.	9.0	6.5	5.4	3.4
1997	12.4	11.9	6.6	10.8	14.9	28.3	14.4	10.3	16.6	3.8	6.9	5.3	7.8	.	9.5	6.0	5.0	3.4
Under 25 years																		
Males and females																		
1991	16.2	14.9	11.6	5.9	22.9	31.1	21.5	22.4	26.0	3.2	8.3	.	8.8	.	7.6	14.3	13.4	4.4
1992	18.0	16.2	12.7	6.4	25.1	34.6	23.3	24.4	27.1	4.0	8.5	.	10.1	.	13.2	16.7	14.2	4.5
1993	21.3	21.8	13.8	7.9	26.8	43.4	27.3	25.2	30.4	5.4	11.1	6.3	12.9	.	22.0	17.9	13.3	5.1
1994	22.0	24.2	11.0	8.7	27.7	45.0	29.0	22.8	32.3	7.3	11.4	5.7	15.1	.	22.0	17.0	12.5	5.5
1995	21.5	23.9	10.6	8.8	28.5	42.5	27.5	19.4	33.3	7.4	12.0	5.5	16.6	.	19.1	15.9	12.1	6.1
1996	22.0	23.1	10.6	10.0	31.0	41.9	29.2	18.2	33.5	8.5	11.7	6.2	16.8	.	20.5	15.5	12.0	6.7
1997	21.2	23.0	8.3	11.0	31.0	39.1	29.1	15.7	33.1	7.7	9.2	6.7	15.4	.	20.6	14.2	11.3	6.7

Unemployment rates, annual averages

(%)



	EU-15	Belgique/ België	Danmark	Deutschland	Ellada	España	France	Ireland	Italia	Luxembourg	Nederland	Österreich	Portugal	Suomi/ Finland	Sverige	United Kingdom	US	Japan
Under 25 years																		
Males																		
1991	15.0	11.9	11.1	5.4	16.0	25.7	18.1	23.7	22.6	3.3	7.4	:	6.8	:	8.3	16.6	14.3	4.7
1992	17.2	14.3	12.2	5.8	17.4	29.9	20.1	25.8	23.4	4.2	8.5	:	9.1	:	15.7	19.7	15.3	4.7
1993	20.8	20.7	13.4	7.8	18.9	40.0	25.1	27.0	26.6	5.2	12.0	5.2	10.8	:	25.6	21.0	14.3	4.9
1994	21.3	22.6	10.6	8.8	19.7	40.9	26.2	24.7	29.0	7.5	12.2	4.5	13.5	:	24.9	19.7	13.2	5.7
1995	20.1	21.5	8.5	8.9	19.8	37.0	23.9	20.7	29.1	7.1	11.3	4.4	15.1	:	20.4	18.0	12.5	6.2
1996	20.7	19.4	8.8	10.6	21.5	36.2	26.3	18.9	29.2	8.4	11.1	5.2	14.3	:	21.3	18.0	12.6	6.8
1997	19.7	19.0	6.7	11.9	22.1	33.2	26.5	16.4	28.5	5.7	8.1	5.6	12.0	:	21.0	15.9	11.8	6.8
Females																		
1991	17.5	18.0	12.2	6.3	31.3	37.9	25.0	20.9	30.3	3.1	9.1	:	11.1	:	6.8	11.6	12.4	4.2
1992	19.0	18.2	13.3	7.0	34.3	40.6	26.8	22.8	31.7	3.7	8.6	:	11.2	:	10.7	13.0	13.0	4.2
1993	21.8	23.0	14.1	8.1	36.1	47.6	29.7	23.0	35.1	5.6	10.1	7.6	15.3	:	18.2	14.2	12.2	5.2
1994	22.8	26.0	11.6	8.6	37.0	50.1	32.0	20.6	36.4	7.2	10.7	7.0	17.0	:	19.0	13.7	11.6	5.4
1995	23.1	26.6	12.9	8.7	38.3	49.0	31.2	17.9	38.6	7.8	12.7	6.7	18.5	:	17.7	13.3	11.6	6.0
1996	23.5	27.5	12.6	9.2	41.0	48.7	32.2	17.2	39.0	8.5	12.4	7.3	20.0	:	19.8	12.5	11.3	6.5
1997	23.0	27.8	10.3	9.9	40.6	46.2	31.9	14.9	38.9	10.0	10.4	7.8	19.7	:	20.1	12.2	10.7	6.5
25 years and over																		
Males																		
1991	5.5	3.5	6.7	4.5	2.9	9.6	6.0	12.1	3.4	1.0	3.4	:	2.0	:	2.6	8.4	5.7	1.7
1992	6.5	4.2	7.5	5.1	3.4	11.4	6.8	12.8	3.8	1.4	3.5	:	2.6	:	5.2	10.1	6.4	1.8
1993	7.9	5.3	8.8	6.4	4.0	15.0	8.2	12.9	4.9	1.9	4.5	2.8	3.7	:	8.6	10.5	5.8	2.1
1994	8.2	6.2	6.6	7.0	4.4	15.8	8.6	11.9	5.9	2.1	5.3	2.7	4.8	:	8.9	9.6	4.8	2.5
1995	7.9	6.2	5.3	6.9	4.6	14.8	8.2	10.4	6.3	1.5	4.8	2.9	5.0	:	8.3	8.6	4.3	2.7
1996	8.0	6.3	4.8	7.9	4.4	14.3	8.8	10.0	6.6	1.5	4.0	3.4	5.1	:	8.7	7.9	4.1	2.9
1997	7.9	6.0	4.1	9.0	4.5	13.1	9.0	8.7	6.7	1.4	3.2	3.3	5.0	:	8.9	6.4	3.6	2.9
Females																		
1991	8.3	8.6	8.8	7.1	7.8	19.3	10.0	13.9	8.8	2.1	8.1	:	4.2	:	2.0	6.3	5.1	1.8
1992	9.2	8.9	9.5	8.8	8.8	21.1	10.8	13.6	8.8	2.6	7.3	:	3.6	:	3.4	6.5	5.7	1.9
1993	10.3	10.0	10.0	9.9	9.3	24.1	11.5	13.6	10.3	2.9	7.3	4.5	5.2	:	5.7	6.6	5.4	2.2
1994	10.8	11.0	8.8	10.3	9.4	26.3	12.1	12.6	11.5	3.5	7.7	4.5	6.3	:	6.3	6.1	4.9	2.5
1995	10.6	11.1	8.0	9.8	9.8	25.7	11.8	10.9	12.0	3.7	7.5	4.6	6.5	:	6.5	5.7	4.4	2.7
1996	10.6	10.8	7.4	9.9	10.7	24.7	12.4	10.3	12.0	3.6	7.1	4.8	6.4	:	7.6	5.2	4.3	2.8
1997	10.7	10.0	5.9	11.0	10.6	24.1	12.4	9.0	12.4	2.9	6.2	4.8	5.8	:	8.2	4.8	3.9	2.9

Number of unemployed, annual averages

(1000)



	EU-15	Belgique/ België	Danmark	Deutschland	Ellada	España	France	Ireland	Italia	Luxembourg	Nederland	Österreich	Portugal	Suomi/ Finland	Sverige	United Kingdom	US	Japan	
Total																			
Males and females																			
1991	13600.6	263.0	242.9	2195.2	276.3	2476.4	2323.3	197.5	2064.3	2.8	395.1	:	190.9	:	143.0	2528.4	8426.1	1359.2	
1992	15298.6	295.4	265.8	2580.0	317.5	2810.1	2557.6	209.5	2097.5	3.6	394.4	:	199.3	:	251.8	2891.1	9384.3	1422.5	
1993	17732.8	365.5	289.1	3090.3	351.5	3502.5	2908.8	215.1	2345.6	4.5	467.1	151.5	270.3	:	401.0	2979.0	8733.8	1656.7	
1994	18420.7	416.2	228.8	3299.3	369.5	3727.5	3049.9	202.2	2570.9	5.4	516.3	146.2	332.6	:	411.8	2744.0	7996.5	1920.8	
1995	17841.6	416.2	203.1	3192.6	385.8	3583.6	2924.9	177.1	2687.3	4.9	505.1	149.4	346.5	:	390.6	2496.8	7404.3	2099.2	
1996	18160.0	408.0	192.1	3475.5	410.8	3529.4	3129.4	173.2	2731.1	5.1	468.4	164.4	349.0	:	425.6	2339.8	7235.5	2259.2	
1997	17978.0	389.2	156.2	3910.3	408.4	3357.9	3126.2	154.5	2755.9	4.5	392.2	164.2	331.2	:	436.0	2022.9	6739.1	2301.7	
Males																			
1991	6728.6	104.0	115.7	1031.2	110.7	1197.4	1004.1	124.4	934.2	1.4	168.3	:	75.4	:	82.6	1615.6	4817.3	771.7	
1992	7774.7	126.6	127.9	1163.0	126.9	1402.7	1132.6	131.8	964.6	1.8	179.7	:	95.0	:	156.5	1927.6	5379.7	820.0	
1993	9290.1	166.4	144.9	1481.7	146.2	1849.1	1364.7	134.1	1116.6	2.4	237.9	67.3	125.8	:	247.2	1976.5	4932.4	947.5	
1994	9557.7	193.6	109.7	1609.2	157.0	1900.9	1416.6	125.2	1260.3	2.8	267.9	63.7	160.7	:	247.9	1813.3	4367.7	1123.3	
1995	9051.6	190.9	89.3	1577.0	160.9	1756.3	1328.0	109.0	1303.3	2.2	244.9	66.6	170.4	:	225.0	1623.5	3983.0	1230.0	
1996	9275.8	185.4	84.6	1825.7	158.8	1721.9	1453.7	105.5	1329.2	2.4	214.7	77.2	169.9	:	235.8	1524.3	3879.4	1340.8	
1997	9034.0	177.8	70.2	2067.1	161.7	1582.2	1470.4	93.3	1321.7	2.0	170.8	76.0	159.4	:	237.9	1259.8	3576.7	1353.3	
Females																			
1991	6872.0	159.0	127.2	1164.1	165.6	1279.1	1319.1	73.1	1130.1	1.4	226.8	:	115.5	:	60.5	912.8	3608.8	587.5	
1992	7523.9	168.8	137.9	1417.0	190.5	1407.4	1425.0	77.8	1132.9	1.7	214.6	:	104.3	:	95.3	963.5	4004.7	602.5	
1993	8442.8	199.1	144.1	1608.6	205.3	1653.4	1544.1	81.0	1228.9	2.1	229.2	84.2	144.5	:	153.8	1002.5	3801.3	709.2	
1994	8863.0	222.6	119.0	1690.1	212.5	1826.6	1633.3	77.0	1310.6	2.6	248.4	82.5	171.9	:	163.8	930.6	3628.8	797.5	
1995	8790.1	225.2	113.8	1615.6	224.9	1827.2	1597.0	68.0	1384.0	2.7	260.2	82.8	176.1	:	165.6	873.2	3421.3	869.2	
1996	8884.3	222.6	107.5	1649.8	252.0	1807.5	1675.7	67.8	1401.9	2.7	253.7	87.3	179.1	:	189.8	815.4	3356.1	918.3	
1997	8944.0	211.4	86.0	1843.2	246.7	1775.7	1655.8	61.2	1434.1	2.5	221.4	88.2	171.8	:	198.1	763.1	3162.4	948.3	
Under 25 years																			
Males and females																			
1991	4413.5	73.4	63.1	349.4	121.5	920.4	678.8	66.0	1018.5	0.8	109.3	:	73.8	:	52.0	799.6	2766.6	385.8	
1992	4692.6	78.7	65.5	353.5	132.5	999.9	709.1	69.3	1003.8	1.0	113.0	:	80.2	:	81.5	892.2	2898.8	399.2	
1993	5273.0	102.5	68.5	414.5	142.4	1231.5	797.2	70.9	1035.3	1.2	143.9	38.7	97.7	:	121.2	911.4	2717.0	455.0	
1994	5216.3	114.1	54.5	427.9	143.2	1244.1	798.4	63.9	1042.7	1.6	144.5	34.7	112.5	:	116.6	826.9	2692.6	499.2	
1995	4931.7	107.8	54.2	400.5	144.6	1149.0	727.9	53.5	1059.9	1.5	148.9	33.2	116.0	:	98.8	753.9	2590.3	539.2	
1996	4927.1	99.8	53.4	436.0	156.5	1124.1	763.4	50.5	1050.1	1.6	142.1	35.2	115.6	:	101.8	723.0	2545.2	584.2	
1997	4678.0	95.7	41.2	472.9	152.3	1037.5	723.6	45.2	1028.5	1.4	111.1	36.1	108.1	:	98.4	652.4	2424.0	570.0	

Methodological notes

1. The Eurostat unemployment rates are calculated according to the recommendations of the 13th International Conference of Labour Statisticians organised by the International Labour Office (ILO) in 1982. Unemployed persons are those persons aged 15 years and over who
 - are without work
 - are available to start work within the next two weeks
 - and have actively sought employment at some time during the previous four weeks.
2. The unemployment estimates are based on the results of the European Community Labour Force Survey. It is carried out in the spring of each year. The use of the same definitions and concepts throughout the EU ensures comparability of the results between Member States.
3. The **unemployment rate** is the number of unemployed as a percentage of the labour force (people living in collective households are excluded). The labour force is the total of the employed and the unemployed. Monthly estimates of the **number of unemployed** are derived by interpolating/extrapolating each year's Community Labour Force Survey results using the results of the national labour force surveys (see table A) and monthly indicators of unemployment (see table B). Monthly estimates of **employment** are obtained by
 - interpolating/extrapolating linearly the annual Community LFS results (Belgium, Denmark, Germany, Greece, France, Ireland, Luxembourg, Netherlands)
 - interpolating/extrapolating linearly the results of the national quarterly labour force surveys after adjustment to the Community LFS (Spain, Italy, Portugal, United Kingdom)
 - using the results of the national monthly labour force surveys (Finland, Sweden, USA, Japan).
4. Estimates are made separately for males under 25, females under 25, males aged 25 years and over, and females aged 25 years and over. Totals are obtained by adding up these four basic categories.
5. The figures for the four basic categories are seasonally adjusted using the multiplicative version of the X-11 method of the US Bureau of the Census. The reliability of the figures is adversely affected if deseasonalisation is performed on short series (such as Germany since the reunification) or where breaks occur (such as Sweden since 1993).
6. From 1992, in some member States, the more restrictive application of the ILO guidelines introduces a break in the series. In such cases, no estimates are provided for the period before 1992.

Table A: Reference period of the last surveys used

Country	Community labour force surveys	National labour force surveys
Belgium	1997Q2	-
Denmark	1997Q2	-
Germany	1997Q2	-
Greece	1997Q2	-
Spain	1997Q2	1998JAN
France	1997Q2	-
Ireland	1997Q2	-
Italy	1997Q2	1998Q1
Luxembourg	1997Q2	-
Netherlands	1997Q2	-
Austria	1997Q2	1995Q1
Portugal	1997Q2	1997Q3
Finland	-	1998MAR
Sweden	-	1998MAR
United Kingdom	1997Q2	1997Q4

NB: 1994Q2 = 2nd quarter of 1994

Table B: Monthly indicators of unemployment.

BELGIUM: All persons in the following categories registered at employment offices: wholly unemployed persons in receipt of benefit, other unemployed persons compulsory registered and voluntarily registered persons without work. Series provided by the Office National de l'Emploi.

DENMARK: Persons seeking full-time or part-time employment, whether or not they are members of an unemployment insurance fund. Series provided by Danmarks Statistik.

GERMANY: Unemployed persons registered at public employment offices and seeking work as employees for at least 18 hours per week. Series provided by the Bundesanstalt für Arbeit.

GREECE: No monthly indicator

SPAIN: Unemployed persons registered at public employment offices and seeking work as employees for 20 hours or more per week. Series provided by the Ministerio de Trabajo y Seguridad Social.

FRANCE: Unemployed persons registered at the Agence de l'Emploi and seeking permanent full-time employment (demandeurs de catégorie 1). Series provided by the Ministère du Travail, de l'Emploi et de la Formation Professionnelle.

IRELAND: Claimants for unemployment benefit, applicants for unemployment assistance and others seeking work who are registered with the employment services of the Department of Social Welfare. Excluded are persons seeking part-time employment. Series provided by the Central Statistics Office.

ITALY: Persons without work, persons seeking their first job, persons working part-time for less than 20 hours per week and workers on a fixed-term contract of not more than 4 months in any 12-month period, who are looking for a different job. Series provided by the Ministero del Lavoro e della Previdenza Sociale.

LUXEMBURG: Unemployed persons registered at employment offices and seeking work as employees for at least 20 hours per week. Series provided by the Administration de l'Emploi.

NETHERLANDS: Persons registered at employment offices, between the ages of 16 and 64 years,
– who are without work or with work less than 12 hours a week and
– who are immediately available for paid employment for at least 12 hours a week or who found a job and will start working for at least 12 hours a week. Series provided by the CBS.

AUSTRIA: No monthly indicator.

PORTUGAL: Persons registered at employment offices who are available for work within 30 days after registration. Series provided by the Instituto de Emprego e Formação Profissional.

FINLAND: Number of unemployed in the monthly labour force survey.

SWEDEN: Number of unemployed in the monthly labour force survey.

UNITED KINGDOM: Persons seeking full-time work and claiming unemployment benefit because they are out of work. Series provided by the Department of Employment.

BELGIQUE/BELGIË

Moniteur belge/Belgisch Staatsblad
Rue de Louvain 40-42/Leuvenseweg 40-42
B-1000 Bruxelles/Brussel
Tel. (32-2) 552 22 11
Fax (32-2) 511 01 84

Jean De Lannoy
Avenue du Roi 202/Koningslaan 202
B-1060 Bruxelles/Brussel
Tel. (32-2) 538 51 69
Fax (32-2) 538 08 41
E-mail: jean.de.lannoy@infoboard.be
URL: <http://www.jean-de-lannoy.be>

Librairie européenne/Europese Boekhandel
Rue de la Loi 244/Welstraat 244
B-1040 Bruxelles/Brussel
Tel. (32-2) 295 26 39
Fax (32-2) 735 08 60

DANMARK

J. H. Schultz Information A/S
Herstedvang 10-12
DK-2620 Albertslund
Tlf. (45) 43 63 23 00
Fax (45) 43 63 19 69
E-mail: schultz@schultz.dk
URL: <http://www.schultz.dk>

DEUTSCHLAND

Bundesanzeiger Verlag
Breite Straße 78-80
Postfach 10 05 34
D-50667 Köln
Tel. (49-221) 20 29-0
Fax (49-221) 202 92 78
E-mail: Vertrieb@bundesanzeiger.de
URL: <http://www.bundesanzeiger.de>

ΕΛΛΑΔΑ/GREECE

G. C. Eleftheroudakis SA
International Bookstore
Panepistimiou 17
GR-10564 Athina
Tel. (30-1) 331 41 80/1/2/3
Fax (30-1) 323 98 21
E-mail: elebooks@netor.gr

ESPAÑA

Mundi Prensa Libros, SA
Castelló, 37
E-28001 Madrid
Tel. (34-1) 431 33 99
Fax (34-1) 575 39 98
E-mail: librena@mundiprensa.es
URL: <http://www.mundiprensa.es>

Boletín Oficial del Estado
Trafalgar, 27
E-28010 Madrid
Tel. (34-1) 538 21 11 (Libros/
384 17 15 (Suscripciones)
Fax (34-1) 538 21 21 (Libros/
384 17 14 (Suscripciones)
E-mail: webmaster@boe.es
URL: <http://www.boe.es>

FRANCE

Journal officiel
Service des publications des CE
26, rue Desaix
F-75727 Paris Cedex 15
Tel. (33) 140 58 77 01/31
Fax (33) 140 58 77 00

IRELAND

Government Supplies Agency
Publications Section
4-5 Harcourt Road
Dublin 2
Tel. (353-1) 661 31 11
Fax (353-1) 475 27 60

ITALIA

Licosa SpA
Via Duca di Calabria, 1/1
Casella postale 552
I-50125 Firenze
Tel. (39-55) 64 54 15
Fax (39-55) 64 12 57
E-mail: licosa@ftbcc.it
URL: <http://www.ftbcc.it/licosa>

LUXEMBOURG

Messageries du livre SARL
5, rue Raiffeisen
L-2411 Luxembourg
Tel. (352) 40 10 20
Fax (352) 49 06 61
E-mail: mdl@pt.lu

Abonnements:

Messageries Paul Kraus
11, rue Christophe Plantin
L-2339 Luxembourg
Tel. (352) 49 98 88-8
Fax (352) 49 98 88-444
E-mail: mpk@pt.lu
URL: <http://www.mpk.lu>

NEDERLAND

SDU Servicecentrum Uitgevers
Externe Fondsen
Postbus 20014
2500 EA Den Haag
Tel. (31-70) 378 98 80
Fax (31-70) 378 97 83
E-mail: sdu@sdu.nl
URL: <http://www.sdu.nl>

ÖSTERREICH

**Manz'sche Verlags- und
Universitätsbuchhandlung GmbH**
Siebenbrunnengasse 21
Postfach 1
A-1050 Wien
Tel. (43-1) 53 16 13 34/40
Fax (43-1) 53 16 13 39
E-mail: auslieferung@manz.co.at
URL: <http://www.austria.EU.net/81/manz>

PORTUGAL

Imprensa Nacional-Casa da Moeda, EP
Rua Marques de Sá da Bandeira, 16 A
P-1050 Lisboa Codex
Tel. (351-1) 353 03 99
Fax (351-1) 353 02 94, 384 01 32

Distribuidora de Livros Bertrand Ld.ª
Rua das Terras dos Vales, 4/A
Apartado 60037
P-2701 Amadora Codex
Tel. (351-1) 495 90 50, 495 87 87
Fax (351-1) 496 02 55

SUOMI/FINLAND

**Akateeminen Kirjakauppa/Akademiska
Bokhandeln**
Pohjoisesplanadi 39/
Norra esplanaden 39
PL/PB 128
FIN-00101 Helsinki/Helsingfors
P./tfn (358-9) 121 41
F./fax (358-9) 121 44 35
E-mail: akatilaus@stockmann.mailnet.fi
URL: <http://booknet.cultnet.fi/aka/index.htm>

SVERIGE

BTJ AB
Traktorvägen 11
S-221 82 Lund
Tfn (46-46) 18 00 00
Fax (46-46) 30 79 47
E-post: btjeu-pub@btj.se
URL: <http://www.btj.se/media/eur>

UNITED KINGDOM

**The Stationery Office Ltd
International Sales Agency**
51 Nine Elms Lane
London SW8 5DR
Tel. (44-171) 873 90 90
Fax (44-171) 873 84 63
E-mail: jill.speed@theso.co.uk
URL: <http://www.the-stationery-office.co.uk>

ISLAND

Bokabud Larusar Blöndal
Skólavörðustíg, 2
IS-101 Reykjavík
Tel. (354) 551 56 50
Fax (354) 552 55 60

NORGE

NIC Info A/S
Ostenjoveien 18
Boks 6512 Etterstad
N-0606 Oslo
Tel. (47-22) 97 45 00
Fax (47-22) 97 45 45

SCHWEIZ/SUISSE/SVIZZERA

OSEC
Stampfenbachstraße 85
CH-8035 Zürich
Tel. (41-1) 365 53 15
Fax (41-1) 365 54 11
E-mail: uleimbacher@osec.ch
URL: <http://www.osec.ch>

BÄLGARIJA

Europress-Euromedia Ltd
59, Blvd Vitosha
BG-1000 Sofia
Tel. (359-2) 980 37 66
Fax (359-2) 980 42 30

ČESKÁ REPUBLIKA

NIS CR — prodejna
Konviktská 5
CZ-113 57 Praha 1
Tel. (420-2) 24 22 94 33, 24 23 09 07
Fax (420-2) 24 22 94 33
E-mail: nkposp@dec.nis.cz
URL: <http://www.nis.cz>

CYPRUS

Cyprus Chamber of Commerce & Industry
Griva-Digeni 38 & Deligiorgi 3
Mail orders:
PO Box 1455
CY-1509 Nicosia
Tel. (357-2) 44 95 00, 46 23 12
Fax (357-2) 36 10 44
E-mail: cy1691_eic_cyprus@vans.infonet.com

MAGYARORSZAG

Euro Info Service
Europa Ház
Margitsziget
PO Box 475
H-1396 Budapest 62
Tel. (36-1) 111 60 61, 111 62 16
Fax (36-1) 302 50 35
E-mail: euroinfo@mail.matav.hu
URL: <http://www.euroinfo.hu/index.htm>

MALTA

Miller Distributors Ltd
Malta International Airport
PO Box 25
LOA 05 Malta
Tel. (356) 66 44 88
Fax (356) 67 67 99

POLSKA

Ars Polona
Krakowskie Przedmieście 7
Skr. pocztowa 1001
PL-00-950 Warszawa
Tel. (48-22) 826 12 01
Fax (48-22) 826 62 40, 826 53 34, 826 86 73
E-mail: ars_pol@bevy.hsn.com.pl

ROMÂNIA

Euromedia
Str. G-ral Berthelot Nr 41
RO-70749 Bucuresti
Tel. (40-1) 210 44 01, 614 06 64
Fax (40-1) 210 44 01, 312 96 46

SLOVAKIA

**Slovak Centre of Scientific and Technical
Information**
Namestie slobody 19
SK-81223 Bratislava 1
Tel. (421-7) 531 83 64
Fax (421-7) 531 83 64
E-mail: europ@tbb1.slitk.stuba.sk

SLOVENIA

Gospodarski Vestnik
Založniska skupina d.d.
Dunajska cesta 5
SLO-1000 Ljubljana
Tel. (386) 611 33 03 54
Fax (386) 611 33 91 28
E-mail: belicd@gvestnik.si
URL: <http://www.gvestnik.si>

TÜRKIYE

Dünya Infotel AS
İstiklal Cad. No: 469
TR-80050 Tunel-Istanbul
Tel. (90-212) 251 91 96
Fax (90-212) 251 91 97

AUSTRALIA

Hunter Publications
PO Box 404
3167 Abbotsford, Victoria
Tel. (61-3) 94 17 53 61
Fax (61-3) 94 19 71 54

CANADA

Subscriptions only/Uniquement abonnements:
Renouf Publishing Co. Ltd
5369 Chemin Canotek Road Unit 1
K1J 9J3 Ottawa, Ontario
Tel. (1-613) 745 26 65
Fax (1-613) 745 76 60
E-mail: renouf@fox.nstn.ca
URL: <http://www.renoufbooks.com>

EGYPT

The Middle East Observer
41, Sherif Street
Cairo
Tel. (20-2) 393 97 32
Fax (20-2) 393 97 32

HRVATSKA

Mediatrade Ltd
Pavla Hatza 1
HR-10000 Zagreb
Tel. (385-1) 43 03 92
Fax (385-1) 43 03 92

INDIA

EBIC India
3rd Floor, Y. B. Chavan Centre
Gen. J. Bhosale Marg,
400 021 Mumbai
Tel. (91-22) 282 60 64
Fax (91-22) 285 45 64
E-mail: ebic@gasbm01.vsnl.net.in

ISRAEL

ROY International
17, Shimon Hatarssi Street
PO Box 13056
61130 Tel Aviv
Tel. (972-3) 546 14 23
Fax (972-3) 546 14 23
E-mail: royil@netvision.net.il

Sub-agent for the Palestinian Authority:

Index Information Services
PO Box 19502
Jerusalem
Tel. (972-2) 627 16 34
Fax (972-2) 627 12 19

JAPAN

PSI-Japan
Asahi Sanbancho Plaza #206
7-1 Sanbancho, Chiyoda-ku
Tokyo 102
Tel. (81-3) 32 34 69 21
Fax (81-3) 32 34 69 15
E-mail: psijapan@gol.com
URL: <http://www.psi-japan.com>

MALAYSIA

EBIC Malaysia
Level 7, Wisma Hong Leong
18 Jalan Perak
50450 Kuala Lumpur
Tel. (60-3) 262 62 98
Fax (60-3) 262 61 98
E-mail: ebic-kl@mot.net.my

PHILIPPINES

EBIC Philippines
19th Floor, PS Bank Tower Sen
Gil J. Puyat Ave. cor. Tindalo St.
Makati City
Metro Manila
Tel. (63-2) 759 66 80
Fax (63-2) 759 66 90
E-mail: eccpcom@globe.com.ph

RUSSIA

CCEC
60-letiya Oktyabrya Av. 9
117312 Moscow
Tel. (70-95) 135 52 27
Fax (70-95) 135 52 27

SOUTH AFRICA

Safto
5th Floor Export House,
CNR Maude & West Streets
PO Box 782 706
2146 Sandton
Tel. (27-11) 883 37 37
Fax (27-11) 883 65 69

SOUTH KOREA

Kyowa Book Company
1 F1, Phung Hwa Bldg
411-2 Hap Jeong Dong, Mapo Ku
121-220 Seoul
Tel. (82-2) 322 67 80/1
Fax (82-2) 322 67 82
E-mail: kyowa2@ktnet.co.kr

THAILANDE

EBIC Thailand
Vanissa Building 8th Floor
29 Soi Chidlom
Ploenchit
10330 Bangkok
Tel. (66-2) 655 06 27
Fax (66-2) 655 06 28
E-mail: ebicbkk@ksc15.th.com

UNITED STATES OF AMERICA

Bernan Associates
4611-F Assembly Drive
MD20706 Lanham
Tel. (800) 274 44 47 (toll free telephone)
Fax (800) 865 34 50 (toll free fax)
E-mail: query@bernan.com
URL: <http://www.bernan.com>

**ANDERE LÄNDER/OTHER COUNTRIES/
AUTRES PAYS**

Bitte wenden Sie sich an ein Büro Ihrer
Wahl / Please contact the sales office of
your choice / Veuillez vous adresser au
bureau de vente de votre choix

Price (excl. VAT) in Luxembourg: Single copy ECU 10 • Subscription ECU 102



OFFICE FOR OFFICIAL PUBLICATIONS
OF THE EUROPEAN COMMUNITIES

L-2985 Luxembourg

Catalogue number: CA-BH-98-005-EN-C