

TED User Guide now available

A comprehensive User Guide exclusively devoted to TED was published in February of this year. Some 80 pages in length, the User Guide covers questions often put to the help desk team on a daily basis, such as what does "regulation of procurement" actually mean?, how can one search for other documents relating to a specific Call for Tender?, how can I find out who won a contract for providing monitoring equipment to a particular hospital in Lisbon? If you are sometimes puzzled by the legal terms used in the database the User Guide will also help you to understand exactly what they mean – indeed, it is an important reference guide for any user – beginner or advanced. The User Guide is available in the English language only and can be ordered on-line. Simply log on to ECHO and, at the CCL prompt, type the command CALL TDMANUAL, at which point the system will display your address as it has been registered by the ECHO help desk. This address can be changed if necessary. The Guide can also be downloaded from the WWW and is free-of-charge.

The Common Procurement Vocabulary has arrived!



IDT, Paris – Palais des Congrès – Marchés et Industries de l'Information 13-15 juin 1995

Dans le cadre d'IDT '95, vous êtes cordialement invités à visiter le stand de l'Union européenne et à assister le mercredi 14 juin à la session "l'Information européenne" (Salle 62a, de 11h à 13h). Cette session est gratuite, mais l'inscription préalable est nécessaire. Veuillez contacter Mme Anne Bihorel ou Mme Christine Stoclin (no. fax: +352-34981-234).

Several major factors have prompted the introduction of the Common Procurement Vocabulary in the TED database. The creation of the European Economic Area, the expansion of the European Union to include additional members and, perhaps on a smaller scale, the inclusion of services and public utilities directives into the database, mean that the data it contains are continually expanding.

The TED database previously structured its contents around the NACE (Nomenclature des Activités dans la Communauté Européenne) codes, originally developed in 1970 as a common industrial classification for EC countries. In the industrial area, NACE has now been superseded by NACE Rev. 1, and a parallel product classification has been introduced, namely: "CPA – Classification of Products by Activities". This coding system has been elaborated by Eurostat (Statistical Office of the European Communities)

together with the UN statistical office. The CPA will be used in all Member States on a national level for product statistics. In a sense the CPA has paved the way for an extension of the codes for other purposes. In the area of public procurement this "extension" of the CPA is now known as CPV or "Common Procurement Vocabulary". This new coding system has been created by the European Commission directorate responsible for public procurement (DG XV/B/4).

Given the above-mentioned factors, it gradually became clear that the NACE codes used within TED did not cover a wide enough range of subjects. This was indeed a problem, since it was sometimes difficult to search for documents of interest, particularly in the services sector.

A solution to this "overloading" has been found in the form of the Common Procurement Vocabulary, a coding system especially developed for public procurement. Its main purpose

In this issue:

TED	pp. 1-3
WATCH-ECHO	pp. 6-8
NAPs	pp. 9, 12
CORDIS	pp. 10-11

is to help suppliers find notices which are of interest by using a standardised vocabulary in public procurement between awarding authorities, (potential) bidders and EUR-OP (Office for Official Publications of the European Union).

To indicate just how much more detailed the CPV is compared with its predecessor one can look at the following example. The NACE classification consists of some 241 codes, whilst the CPV comprises around 6 000 possible classifications! This means, for example, that the current NACE code 8300 (Activities auxiliary to banking and finance and insurance; real estate transactions...) is divided into 233 individual CPV codes including specific services such as translation, map making, architectural design and market research.

For at least three months after their introduction the CPV codes will work alongside the NACE codes in order to give TED users ample time to become familiar with their structure and to see how they compare with the original codes. The first update of the TED database using the CPV codes took place on 1 February 1995. The TED DEMO database has been updated in order to reflect the new structure. The TED Archive databases (1995-1992) will not be reindexed using the new codes and only data from January 1995 will be indexed using the CPV.

Learning to use the CPV

Like its predecessor, the CPV can be searched using two fields, namely: PC (Product Code) and PN (Product Name). For example:

F PC=45242\$

or

F PN=\$helicopter\$

The CPV codes comprise eight digits (the ninth digit is simply for clarification or code checking and does not concern the user when searching). Group titles (e.g. 35203000 OTHER ROLLING STOCK) are only given if no individual titles (e.g. 35203212 TRAMWAY TRAILERS) can be attributed.

TED users who have already received a printed code list will notice that the digits are separated by full stops. Again, this does not concern the user when searching, for example the CPV code: 26.13.31.11 would be typed in by the user in the following way:

F PC=26133111

The three month "switch-over" period will allow users ample time to convert saved searches made using the NACE codes to accommodate the CPV codes. It is perhaps best to check each one of your searches by comparing the "old" CC codes with the "new" PC codes and seeing which best reflect your search strategy. Bear in mind that the new codes are much more detailed than the NACE codes. For example, a search in free-text (F VIDEO RECORDS) can be replaced with the new product code (F PC=323033\$).

You can find out which keywords are contained in which CPV codes by searching in the PN (Product Name) field. For example, if you are looking for a CPV code containing the keyword "DESIGN" you could type:

D PN=\$DESIGN\$.

Another good strategy for checking your profile table is the following method, usually used for statistical searches:

- 1 Execute your usual search or call the saved profile using the old codes
- 2 Type the following command: S REPORT=STAT
- 3 When the system asks for a "sample", enter the number of hits your search has produced (the maximum number is 2 000)
- 4 When the system asks for the fields you would like to search for, type the field name "PC"
- 5 When asked for the sequence required, type "3" which will prompt the system to sort the records by order of occurrence.

You will then obtain a list of CPV codes sorted by occurrence. The codes at the

file – INFO TDCODES – from which more details can be obtained when available. A list of codes can be downloaded from TED on-line by typing, for example:

D PN=\$TELECOM\$ (for a list of product names beginning with "TELECOM")

or

D PC=24\$ (for a list of Product Codes beginning with the digits "24").

Please note that this list is available free-of-charge from the TED Demo database (poolkey TT92).

Registered TED users have received a new, updated, technical sheet which contains a list of the new fields within the database.

A new database, TED-CPV (poolkey TCPV), has been set up by ECHO especially for the CPV codes. The database is free-of-charge and contains the following fields:

CC	(NACE Product code)
PC	(CPV Product code)
PNENGL	(CPV Product name – English version)
PNFREN	(CPV Product name – French version) etc.

N.B. The Product Names have been translated in all official languages of the EU and will be included in the new database as and when they are available. The codification has been established by DG XV and adapted by EUR-OP. Swedish and Finnish versions of the codes are planned for mid-1995.

The database can be used as indicated in the highlighted box below.

Usage	Syntax	Example
Which CPV codes belong to a particular NACE code?	F CC=xxxx S F=PC	F CC=8300 S F=PC
Which NACE codes belong to a particular CPV code?	F PC=xxxxxxxx S F=CC	F PC=20102300 S F=CC
Which CPV code contains the French word "PONT"(bridge)?	F PNFREN=xxxx S F=ALL	F PNFREN=PONT\$ S F=ALL

top of the list are those which have been most often used in your tender documents. The database producer, EUR-OP, intends to distribute a printed and diskette version of the CPV codes. However, no specific details are currently available to ECHO. Please take time to consult the on-line INFO

Further information on this new database can be obtained by typing INFO TCPV when using the CCL version of the TED database.

The CPV codes will certainly allow users to gain much more from the database than before. The codes will

be adapted and amended on a regular basis during the course of production to ensure that the user's requirements are fully met. Further information, as usual, can be obtained from the ECHO help desk. In addition, the following contacts should be noted:

TED is produced by:

EUR-OP
2, rue Mercier,
L-2985 Luxembourg

Tel.: +352-499281
Fax: +352-490003.

The CPV codes are produced by:

European Commission, DG XV/B/4
100 avenue Cortenbergh,
B-1049 Brussels

Tel.: +32-2-2958946
Fax: +32-2-2950127.

TED gateway update

In issue 4/94 of ECHO Facts for Users we announced that TED was soon to be available via gateways which have been or are in the process of being selected by EUR-OP (see contact details above). The gateway list currently remains unchanged and registered TED users in Austria, Finland, Iceland, Ireland, Italy, Norway, Portugal, Spain, Switzerland and the United Kingdom should be aware that they will soon be required to "shift" from ECHO to the chosen gateway operators in the aforementioned countries. As usual, further information is available from ECHO. Every TED user will be informed via individual mailings regarding their particular situation.

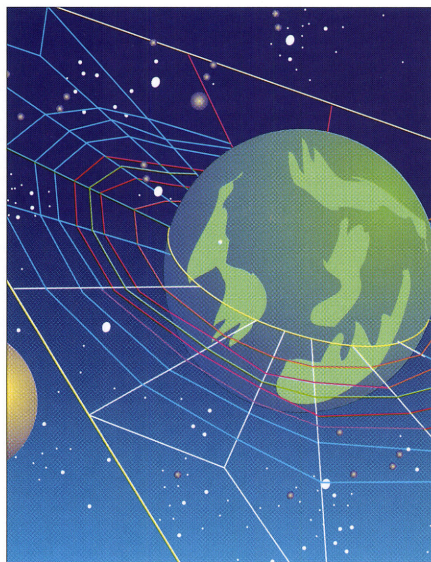
Changes to TED Archive

It has become evident that the TED archive files dating from 1986 to 1991 are little if at all used. Therefore, users should take note that the files are no longer available. It is now TED policy to hold archives spanning a three-year period only.

During 1995 the following files will remain on-line:

TEDA, TD95, TD94, TD93, TD92.
TDZZ regroups all archive files.

What's new in I'M Europe



ECHO Facts for Users is pleased to introduce this column which will become a regular feature in forthcoming issues of the newsletter.

Users may contact I'M Europe by directing their WWW browsers to:

<http://www.echo.lu/>

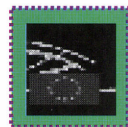
From here, users will be welcomed to the I'M Europe home page. Clicking with the mouse on the highlighted words or icons will open the document of interest. The news list "What's new in I'M Europe" is directly visible from our home page. Since I'M Europe is constantly updated (often once per day) please use this facility in order to check exactly what is available. The list is updated every time a new document is added.

The most notable new items are the following:



New Call for Proposals published by ISPO (The Information Society Proposals Office)

The TED manual is now available (see page 1)

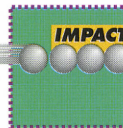


The European Parliament is pleased to announce its presence on I'M-EUROPE

Information Engineering
Project fact sheets
Information Engineering
study fact sheets



INFORMATION SOCIETY, INFO2000: the new programme for the European information content industry and multimedia market draft proposal for your comments. Please send all comments and suggestions about INFO2000 to webmaster@echo.lu



IMPACT – The Information Market Policy Actions programme

Documents available in this section include IMPACT Multimedia Projects and IMO reports as well as IMPACT news.



European Community Programmes related to the Information Market

This section of the WWW has been enhanced with direct links to related resources on other WWW servers. In this way you now also have access from this section to Work Programmes, Calls for Proposals and related documents on other servers. It also contains the complete set of documents for the Telematics Applications Programme 1994-1998: Language engineering call for proposals. From here users are able to FTP the complete set of MS Winword 2 files.



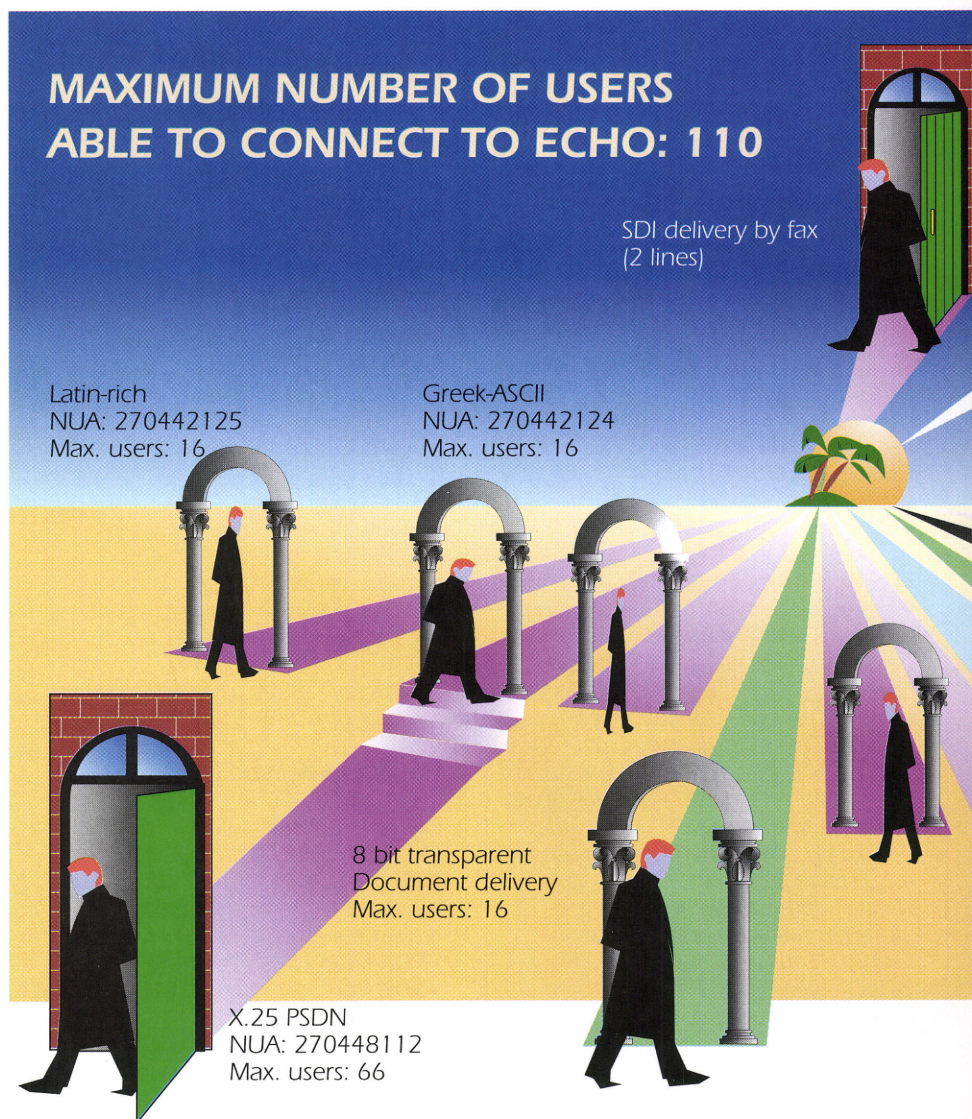
A new version of the libraries homepage is now on-line as well as a new detailed description of the Libraries Programme including updated news and a list of National Focal Points.

If you have any further questions regarding the WWW please do not hesitate to contact the ECHO help desk or e-mail webmaster@echo.lu.

Reflections on 1994 – ECHO

What better time is there than the beginning of the new year to look back and reflect on the achievements of the old? 1994 can certainly be regarded as an exceptional year for ECHO – and these statistics show why!

Let's start with the most important of all – the ECHO users. The implementation of an on-line registration form, available via the public password "ECHO", certainly helped new users to access the databases and services more quickly. Potential ECHO users are now able to complete the registration form in a matter of minutes and, when finished, are presented with their personal user code. There is little doubt that this facility contributed to the staggering increase in customer registration (an increase of over 50% in comparison with last year!). ECHO can now boast over 22 000 registered users in total, with at least 50% of the aforementioned users also subscribing to the CORDIS databases. However, this new facility cannot take all the credit for the increase in registrations. The awareness activities carried out by the National Awareness Partners (see page 12) throughout the Member States during 1994 certainly prompted keen interest in on-line services. This is reflected in the fact that over 40% of newly registered ECHO users are first-time users of on-line services and, as such, are potential clients for the European Electronic Information Services market. Not only are the users registering for the use of ECHO but they are also actively using the databases. November 1994 saw connect hours peak to almost 10 000, with more than one third of the traffic accessing via the Internet. The total number of connect



hours for 1994 stands at 85 000 (a 40% increase over 1993!) with the number of logons increasing at least 50% on last year's figures (almost 420 000 logons to ECHO were recorded during 1994).

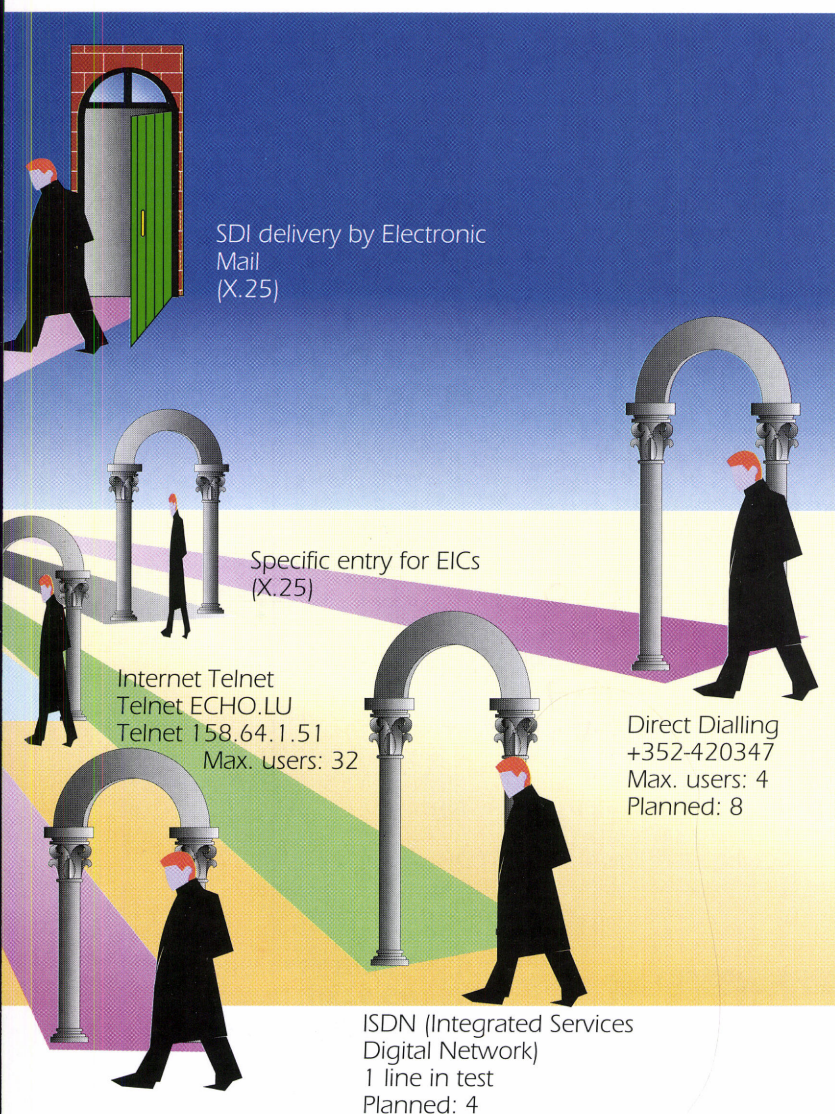
1995 looks set to continue this trend and already looks as though it will be an interesting and varied year for ECHO. The continuous dynamism of the WWW (World Wide Web) on Internet, the availability of more and more ECHO databases via Graphical User Interface (please see page 6), the expansion of the National Awareness Partners network and ECHO's role in their activities mean that we have much to look forward to. Watch this space for further details!

Get connected!

ECHO has taken measures to upgrade its system to accept more parallel users. We are pleased to announce that we have doubled the central memory of our computer from 64 to 128 megabytes and have allowed for more disk space. Now 110 users can access ECHO at any given moment.

Obviously, in the light of ECHO's continuing success and its growing number of users, the situation regarding ease of access will be closely monitored by the help desk team. Any comments regarding access possibilities offered by ECHO are always welcome.

activities



There are five different methods for accessing the ECHO databases and services:

Accessing databases with normal alphabetic characters:

1. Direct dialling using a normal telephone line

Speed	Automatic detection (up to 19 200 bits/s)
Number to dial	+352-420347
Data bits	7
Stop bits	1
Duplex	Full
Parity	Even.

N.B. Users will be charged for an international call if connecting from

outside Luxembourg. A total of four users are able to connect simultaneously.

2. PSDN (packet switching data network connection (X.25))

Speed	Automatic detection
Data bits	7
Stop bits	1
Duplex	Full
Parity	Even or mark
Network User Address (NUA)	270448112.

NOTE: At least 50 users are able to connect simultaneously.

Accessing databases with accented Latin and Greek alphabetic characters (8 data bits)

N.B. Connection only possible via PSDN and EuropaNET.

Data bits	8
Stop bits	1
Duplex	Full
Parity	None
Network User Address (NUA):	
Accented: Latin	270442125
Greek	270442124.

A special communication program is needed for Greek and Latin rich (accented) characters. 16 users are able to connect simultaneously.

NOTE: Users who access the ECHO databases via X.25 should check with their local PTT for details on telecommunication charges and for information on obtaining a Network User Identifier (NUI). The ECHO help desk is able to provide a list of PTT contact points if required, which is also featured in our brochure "ECHO Databases and Services".

3. Academic Research Network of RARE/COSINE

Select the EuropaNET (formerly IXI) or the PSDN option and then, using the above parameters as in point 2, dial the following NUA for EuropaNET:

204370310099.

NOTE: At least 30 users are able to connect simultaneously.

4. Internet

This method of accessing ECHO is fast becoming one of the most popular. Internet users will be pleased to note that the access to the ECHO databases via the network has been upgraded. It is now possible for over 30 users to connect to ECHO in parallel and the connection speed is now 64 Kbit/s.

Users should "telnet" to ECHO.LU. The numerical equivalent of this address is: 158.64.1.51.

5. Videotex

This is system dependent. Details on the videotex service offered will be featured in future issues.

Watch-ECHO: your user-friendly access tool!

First unveiled during the International On-line and CD-ROM exhibition in London at the beginning of December 1994, ECHO's GUI (Graphical User Interface) prototype Watch-ECHO (based on that already developed for the CORDIS service) is already sparking keen interest from the general public. To date, over 150 users have offered to test the application and the results of their tests will be published in the forthcoming issue of ECHO Facts for Users.

Watch-ECHO currently offers a GUI-based access to I'M Guide (on-line and CD-ROM) as well as the TED (Tenders Electronic Daily) database. By autumn 1995 it is expected that all ECHO databases will become available via this medium.

What is Watch-ECHO?

Basically, Watch-ECHO is a Windows application which provides easy access to the ECHO on-line databases via a modem, X.25 connection and off-line via the I'M Guide CD-ROM or your Local Area Network. Watch-ECHO hides the CCL (Common Command Language) behind a user-friendly graphical interface. Data are available

at the click of a mouse button in whichever order and in whatever format selected by the user from the numerous possibilities offered by "Word". The advantages of using such an application know no bounds. For instance:

- **an automatic logon procedure** to the databases means that access is fully automated;
- **queries can be prepared off-line**, without incurring data communication charges;
- **queries are transformed** into syntactically correct query expressions formulated in the CCL;
- users are able to **compare data retrieved** from the CD-ROM version with the on-line database;
- documents may be **defined** by the user.

Watch-ECHO supports a variety of hardware configurations and data communication settings. The software automates connection and disconnection procedures and its embedded terminal emulator allows you to look at the underlying conversation between Watch-ECHO and ECHO while this communication is taking place (please note that this feature is not available when using the CD-ROM).

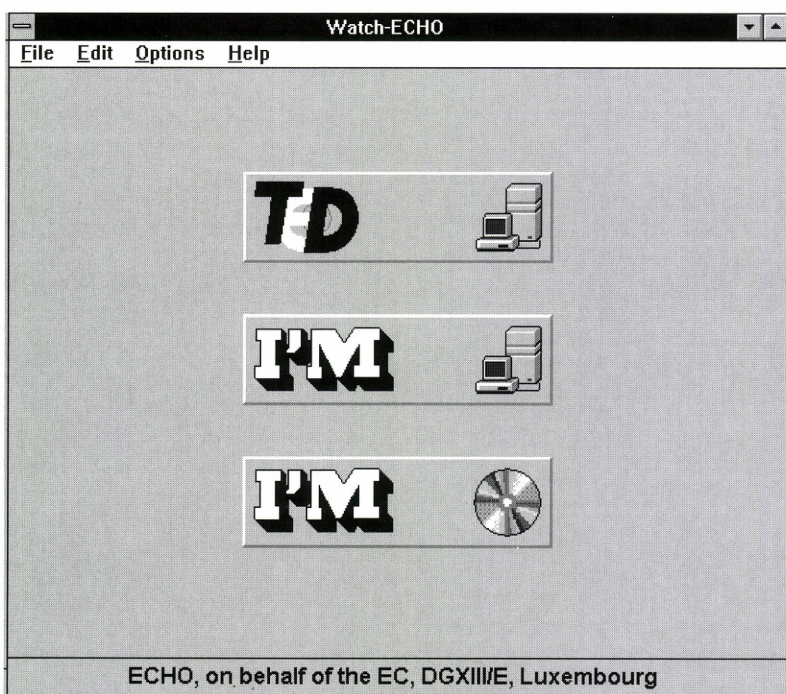


Fig. 1 - Watch-ECHO's opening window, from which the databases can be selected

Getting started

Since Watch-ECHO communicates with ECHO in the CCL (Common Command Language), your user code on the ECHO host computer must be set up to enter CCL mode as soon as you log on to the system. If you customarily work with ECHO via menus, you must instruct ECHO to bypass the opening menu when logging on:

- a) Log on to the system
- b) Select the CCL option from the main menu screen
- c) At the "?" prompt type:

DEF START

to which the system will reply with a message similar to this one:

START COMMANDS: CALL ECHO

- d) Here, press the SPACE-BAR and then the ENTER key. The system replies:

START COMMANDS DELETED ?

When you next log on to the system, you will go directly to the CCL prompt.

- e) Now, to log off from the system (so that you can record the connection and disconnection procedures) type:

STOP


The system replies:

```
QUERY : 00013574/0001/$$00
DATE : 95:03:01 TIME : 09:58:31
% EXC0419 1153 95-03-01 3167
% EXC0421 0.7177
```

You are now all set to record the automatic procedures.

Recording the procedure

By following the steps explained below, you are recording a "macro", which Watch-ECHO will use to connect with ECHO for each query.

- a) Under the Option menu, choose the Terminal option. The terminal window appears
- b) Click the highlighted button  to begin recording the macro
- c) Choose Connection Macro in the Record Macro window
- d) Click OK.

You now have to connect manually to ECHO. Watch-ECHO remembers every key you press until you tell it to stop recording.

The actual connection sequence depends on the set-up you are using and from where you are connecting. Below is an example of a connection via the Luxembourg PSDN (please note that macros do vary!).

How do I use Watch-ECHO?

To formulate a query, you select one of the query forms included with the application. Alternatively, Watch-ECHO allows you to create a new query form which you can personally adapt to your information needs. Once you

have selected a form and have entered the search terms, Watch-ECHO will transform the query form into a syntactically correct query expression formulated in CCL. Watch-ECHO then runs your query and reports back to you the number of documents found. When you are filling in a query form, you can select search terms directly from the target database indexes and paste them into your query. In this way, you know that the terms you have chosen actually relate to information in the database. For greater cost-efficiency, Watch-

ECHO makes all these services available at any time on your own PC. You can prepare your queries off-line, without incurring data communication charges, since the most important indexes have been downloaded and stored on your workstation.

How can I arrange the documents retrieved?

This is no problem for Watch-ECHO! The application provides a flexible navigation tool to guide you through retrieved documents. The software allows you to define your own document layouts and it simplifies the exploitation of the information. Watch-ECHO filters the data retrieved from ECHO so that only the meaningful part is passed to you. Prompts, document identifiers etc. are taken off the flow of incoming data while it is re-organised into fields and documents according to a customised document layout. The document navigator allows users to look at the titles and/or the full text of the documents retrieved. Looking at the titles allows the user to select documents of interest. While working with Watch-ECHO, help is always just a glance away. The bottom bar of all Watch-ECHO windows, i.e. the Status Bar, includes a brief explanation or tip about the currently selected command.

How does I'M Guide compare the CD-ROM with the on-line information?

Watch-ECHO provides a single interface to the I'M Guide CD-ROM and on-line database. Through Watch-ECHO, you are able to conduct a search on the CD-ROM version of the database. You are then able to connect to the on-line version via the same interface in order to perform the search on the disk for more recent or complementary information for the data retrieved from the CD-ROM. Watch-ECHO makes sure that the information downloaded is not duplicated on the CD-ROM.

Using Watch-ECHO

You interact with Watch-ECHO using two windows: the MAIN window and the TERMINAL window.

The MAIN window gives access to all the database functions, such as preparing and submitting queries, viewing documents and so on. This MAIN window has the same four main elements as those described above.

The TERMINAL window is not active when using the CD-ROM, since you are working locally.

```

1.   ATQ0V1E1S0=0
2.   OK
3.   ATDT0,0736
    CONNECT 2400
4.   LUXPAC 009 003 192 009
5.   [USER_NUI]-448112
    COM
6.   % THIS IS ECHO; PLEASE ENTER YOUR CODE
7.   %/[USER_CODE]#####
    #####
    % JMS0066 GRIPSR 95-03-01 25:13 6246
    % CMD0553
    Important message : please consult
    INFO STOPPRESS (Last update: 28.02.95)
    -----
    CUSTOMER-NUMBER IS 123456
    USERCODE USED LAST ON 26.02.95 AT 25:12
    YOU ARE NOW ACCEPTED BY GRIPS VERSION 4.01
    ENTER BASE COMMAND
8.   ?
    
```

Refer to your modem's manual and your PSDN documentation for specific information. In this case:

Step	Description	Example
1.	Initialise the modem	ATQ0V1E1S0=0
2.	Wait for modem confirmation	OK
3.	Dial the LUXPAC phone number	ATDT0,0736
4.	Wait for the LUXPAC prompt	LUXPAC 009 003 192 009
5.	Send the NUI and the ECHO NUA	[USER_NUI]-448112
6.	Wait for the ECHO answer	% THIS IS ECHO; PLEASE ENTER YOUR CODE
7.	Enter the user code	[USER_CODE]
8.	Wait for the CCL prompt	?

Since Watch-ECHO communicates with ECHO in the CCL, the connection macro must reach the CCL prompt. Stop recording by clicking  when you receive the following message:

**YOU ARE NOW ACCEPTED BY GRIPS VERSION X.YY
ENTER BASE COMMAND
?**

This terminates the recording process. For the automatic procedure to work consistently each time you wish to connect, you now have to edit the recorded macro to remove any typing errors or variables.

How can I obtain my copy of Watch-ECHO?

Both Watch-ECHO and the I'M Guide CD-ROM are currently under test. Users will be kept informed via the usual channels (i.e. the stoppress message and ECHO Facts for Users) when these new applications are ready for distribution. Users will be able to obtain a copy of Watch-ECHO, on diskette, from the ECHO help desk. Alternatively it can be ordered on-line and will be available for downloading from the WWW.

The I'M Guide CD-ROM, including Watch-ECHO, can be purchased from the National Awareness Partners for the sum of 50 ECU. A list of NAP contact points can be obtained from the ECHO help desk.

ECHO
B.P. 2373
L-1023 Luxembourg

Tel.: +352-34981-200
Fax: +352-34981-234.

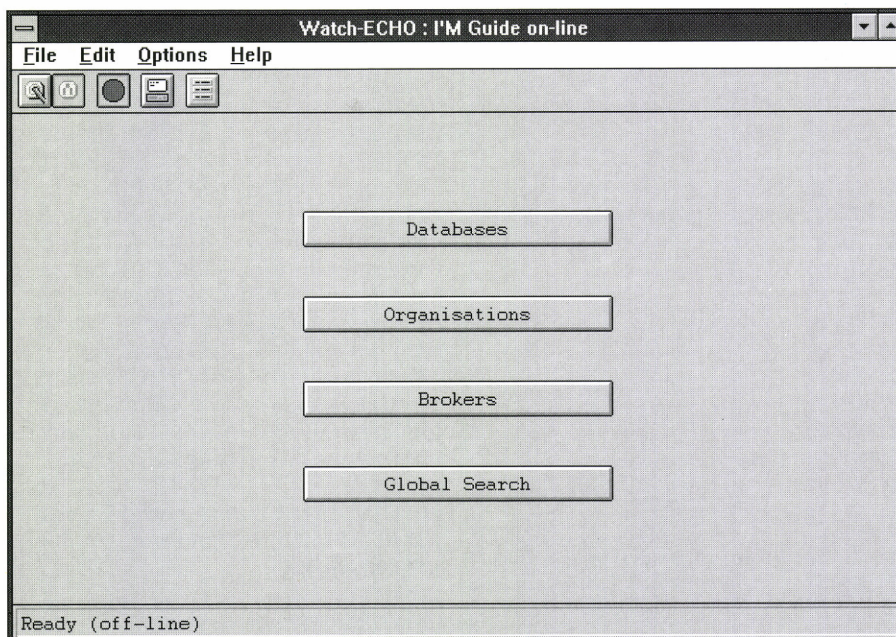


Fig. 2 - I'M Guide's on-line menu window. From this the user selects the organisation section of the database by clicking twice on the mouse button

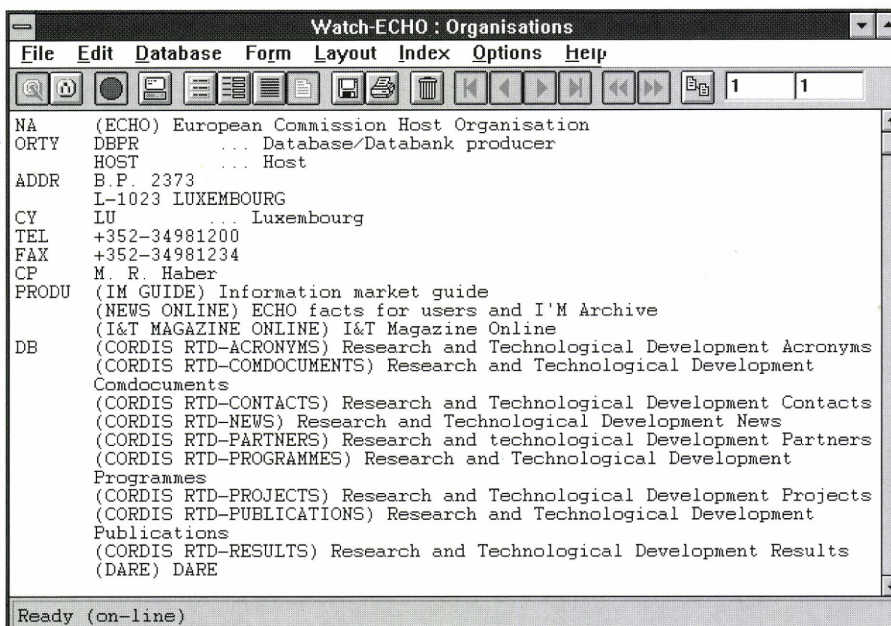


Fig. 3 - Above is an example of a full-text document.

NAP activities!

The list is accurate at the time of going to press and covers the period from April to May 1995. Please contact your local NAP for further details, since more events may be planned which are not featured here.

Austria – TECHINFORM/WKÖ

All events listed will take place in Vienna

“Datenbanken für Export-akademie”

Date: 26-04-95

“EU-Datenbanksysteme Internet”

Dates: 03-05-95, 10-05-95
and 17-05-95

Belgium – CNDST/NCWTD

“Electronic Information Awareness”

Date: 10-04-95
Place: Brussels

N.B. This event is held in collaboration with the Belgian Documentation Association and the International Translation Centre of The Hague (Netherlands).

Denmark – INFOSCAN

N.B. All events listed will take place in Copenhagen

“The basics of Electronic Information ”

Date: 17-05-95

“EU Legal Databases ”

Date: 18-19/05/95

Greece – National Documentation Centre (NDC)

NDC will be present at the “Business Technology ” exhibition in Piraeus from 5-9 April 1995. A special “Info Day ” is to take place on 8 April 1995 at which the guest speaker will be Mr M. Carpentier, Director General of DG XIII.

Germany – Institut der deutschen Wirtschaft

“Grundlagen der Tele-kommunikation”

Date: 06-08/04/95
Place: Gummersbach

“Einführung in CCL und Inhalte TED/Workshop AK Datenbanken”

Date: 19-20/04/95
Place: Cologne

"Nützung von Datenbanken für mittelständische Unternehmen"

Date: 25-04-95
Place: Bonn

"Einführung in die Datenbanknutzung"

Date: 26-27/04/95
Place: Hamminkeln

"Nützung externer Datenbanken"

Date: 27-29/04/95
Place: Gummersbach

"Nützung externer Datenbanken/Erfahrungen aus einem Modellversuch"

Date: 04-05-95
Place: Würzburg

"Datenbanknutzung im naturwissenschaftlichen und technischen Bereich"

Date: 24-05-95
Place: Cologne

Ireland – Forbairt

N.B. All activities listed will take place in Dublin. The following events are planned:

"Information for Safety Officers"

Date: 05-04-95

"A business opportunity"

Date: 11-04-95

Exhibition – "Information Age"

Date: 24-05-95.

IDEA on ECHO

In issue 3/94 of ECHO Facts for Users we announced the forthcoming arrival of the IDEA (Interinstitutional Directory of European Administrations) database. Produced by the Office for Official Publications, this database will hold information from directories of the European Union Institutions. IDEA is aimed not only at those already working within the EU Institutions but also at a wider public. It is for this reason that the data must be transparent not only for those familiar with the internal organisation of the European Union institutions but also those who, for example, do not know what the term "Directorate General" means. It is currently felt that the data require further treatment. Users will be informed via the usual channels (i.e. Stoppress and ECHO Facts for Users) as soon as the database is launched. IDEA will initially be available free-of-charge for a few months after which a fee of 30 ECU per connect hour will be levied.

National Awareness Partner network continues to grow in every way

1994 was certainly a successful year for the NAPs! The network has now almost doubled in size, and last year new NAPs were welcomed from France, Germany, Ireland, Italy, Spain, Austria, Finland, Iceland, Norway and Sweden.

The National Awareness Partners have "spread the word" regarding the use and benefits of electronic information and the role of the IMPACT programme in this area by conducting almost 400 seminars, and over 100 workshops. They have been present at more than 60 exhibitions and 20 conferences. Continuing our introductions of the recently appointed National Awareness Partners, we are pleased to introduce partners situated in:

Sweden

In Sweden two NAPs have been nominated:

- Statskontoret (Swedish Agency for Administrative Development)
- IDC-KTHB, Information and Documentation Centre at the Royal Institute of Technology Library.

Statskontoret is a government agency under the Ministry of Finance. Its mission is to assist the Swedish government in matters concerning efficiency, organisation and control within public administration. Since Information Technology is an integral part of public administration this area is also one of Statskontoret's responsibilities.

The NAP activities are in many ways complementary to the services Statskontoret already provides concerning information infrastructure. However, the NAP activities do add a new dimension to the services provided by this organisation: the content side of information technology applications.

IDC-KTHB is a computerised information department within the library at the Royal Institute of Technology in Stockholm. For almost 30 years now, IDC has worked with electronic information and electronic information services, running their own services as well as being the national agent for some of the most important European information services, e.g. STN International and

ESA-IRS. IDC's basic mission has always been to provide scientific and technical information to research in academia and industry. With the expansion of the information market, IDC's client-base is now ever broadening with more and more "end-users" carrying out their own information searches. One of the most important services over the years has always been IDC's involvement in training of (potential) users concerning information retrieval, not only on-site at the Institute of Technology, where thousands of engineers have been trained, but also off-site at the premises of any organisations interested in this kind of training. Every month IDC arranges several courses, seminars, workshops etc. in the area of electronic information provision.

IDC and Statskontoret have divided the NAP activities according to their competence and specialities. This means that IDC is mainly involved in user related aspects and provides user support and advice with emphasis on user training.

Naturally, Statskontoret concentrates on market access to information produced within the public sector and on contacts with the providers of such information. It also concentrates on general and market related aspects of information technology, e.g. it informs and advises companies on Commission projects, Calls for Proposal/Tender and distributes Commission papers and reports.

Naturally, IDC and Statskontoret coordinate their joint activities, making sure that all information requests regarding any aspect of the IMPACT programme and the NAP activities are answered in full.

Finally it should be mentioned that both IDC and Statskontoret will publish regular newsletters as part of their IMPACT NAP activities.

For further information contact:

Statskontoret
Norra Riddarholmshamnen 1
Box 2280
S-10317 Stockholm

Contact: Mr Sören Lindh
Tel.: +46-8-454-4704
Fax: +46-8-454-4693.

IDC
Royal Institute of Technology Library
S-10044 Stockholm

Contact: Mrs Marie Wallin
Tel.: +46-8-790-8950
Fax: +46-8-790-8954.



CORDIS

A New Image for CORDIS

Gone is the hard, black CORDIS "pcb logo" representing a colourless, slightly introverted, hi-tech organisation. The new image with its strong but gentle colours reflects a strategy for the benefit of the people of Europe through the practical implementation of research results.

This new strategy is only possible because of the work that has already been done by CORDIS. This basic work will continue, but we are now in a position to focus clearly on the future.

At the heart of CORDIS are its nine databases containing information about research and technological development within Europe. These databases contain an immense amount of information, the value of which is unquantifiable. Yes, we can count the number of records, and we can quote the investment made by the Commission into this research. We can even estimate the value of the privately funded research contained on these databases. But more important than these numbers is the use made of this information at a practical level.

A production manager or a design engineer, for example, who works in a factory, may have a technical problem. If he logs on to ECHO he has a good chance of finding information relating to his problem. Most important of all, he gets from CORDIS a name and

address, and a telephone number. He can immediately telephone and talk to someone who has a knowledge of the matter. In this way CORDIS does not simply provide information. It facilitates communication between individuals with common interests.

Communication like this can provide a wide range of benefits. For example, product quality can be improved and production times and costs can be reduced. This translates into better product performance, improvements in sales, lower costs, and increased profitability. All of these benefits purchasers, employees, and everyone involved with the product. People benefit. That is what is important. CORDIS helps to improve the quality of life for Europeans. For people.

In doing this we also improve Europe's competitiveness in the global market place. This again results in things like improved sales, better profitability and increased employment and this too improves the quality of life for all of us.

The benefits resulting from this communication are effective in both directions. It may simply result in the sale of a publication, or it may be the sale of a product, the licensing of a technique, or a commercial agreement of some other nature. The scope of the information provided by CORDIS is vast. It ranges from agriculture to

nuclear fusion technology, and from covers for unused chimney flues to fillers for use in bone surgery. Such examples are trite compared with the mind-stretching experience of browsing through database entries at random.

But simply having this mass of information is not enough. CORDIS has to disseminate it. Information dissemination is communication, and CORDIS tackles this in several different ways.

Information is made available in different forms suitable for different people. The on-line databases serve a certain type of user well, but the information in these databases is also available on CD-ROM for those for whom this is a more suitable medium. There are also publications containing various facets of the database information, and contacts in European member states are available to assist individuals and organisations to obtain information maintained by CORDIS.

Different methods of accessing the on-line databases, suitable for different types of people, are available. Watch-CORDIS, for example, is a Windows-based front end that enables the databases to be searched simply by clicking and pointing a mouse. It also automates the log-on and log-off procedures, taking that chore away from the user. As alternatives, on-line



CORDIS users have the choice of an intuitive menu search system, or a powerful command line search mode.

Always underlying this mass of data with its various methods of access is the possibility of talking directly to someone knowledgeable. This facility to communicate has been enhanced in several ways. One of the more recent databases, RTD-Contacts, provides details of individuals who are able to provide information, advice, or assistance. They can provide information about many aspects of RTD and can help with information ranging from calls for proposals, partner searches, advice on preparing bids, through to the dissemination of results, patenting, and the financing of further development.

In a similar vein, the RTD-Projects Database has been upgraded to provide details of all partners co-operating in the project.

The RTD-Partners Database has as its prime objective its function as a partner matching service. It enables organisations to find suitable partners for activities ranging from the submission of proposals and tenders, research projects, to commercial activities including licensing of techniques and products, marketing agreements, and manufacturing agreements.

The matching works in two directions. For example, a research organisation can locate a manufacturer to make his products, and a manufacturer can locate new products suitable for his production expertise. Those with new products can also locate organisations who can market them, in the same way that marketing organisations can identify profitable new product lines.

A new feature is the facility to access CORDIS through the Internet and the World Wide Web. This opens up the market for European technology to sell itself to a yet wider global market.

CORDIS on-line databases can be accessed using the Internet, and the hypertext functionality of the World Wide Web has been exploited to allow the interactive on-line completion of data entries for the RTD-Expressions of Interest Database. This is a database operated by CORDIS on behalf of the ESPRIT and Telematics programmes as a partner matching service for responses to current calls for proposals. Users can interrogate both the Expressions of Interest and the RTD-Partners databases with a single search, using the Superbase tool. It is expected that other programs will use this facility in the future.

The World Wide Web is also used by CORDIS to provide information in World Wide Web hypertext form.

These existing facilities may soon be complemented by public conferencing facilities and a bulletin board. Communication with the outside world will drive CORDIS in a direction determined by people and organisations having real requirements. CORDIS will become a dynamic organisation responding to the real needs of the peoples of the European Union, not simply to the European Commission.

The use of technology in this way means that it no longer dominates. It becomes a tool, and Community research becomes oriented to the needs of the people. CORDIS is determined to discharge its obligation to see that the people of Europe benefit from their investment.

For further information contact:

ECHO/CORDIS
Customer Service
B.P. 2373
L-1023 Luxembourg

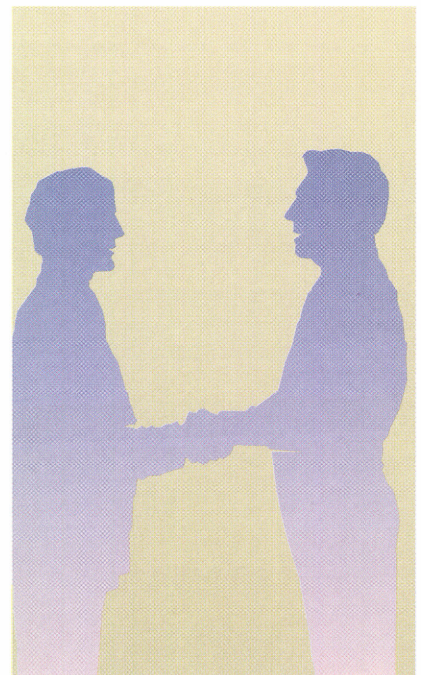
E-mail: helpdesk@cordis.lu
Fax: 352-34981-248.

WWW URL : <http://www.cordis.lu>

Another meeting – another success!

The EC Information Sources and Services meeting held during the International On-line and CD-ROM exhibition in London last year provided those present with the opportunity to catch up on important facts regarding the IMPACT 2 programme, ECHO and CORDIS. Participants seemed especially keen to hear of the new and dynamic services offered by all those involved with the meeting and were particularly interested in the launch of DG XIII's World Wide Web. Lively discussions ensued and questions were asked regarding the policies and trends.

Such user meetings, held as far as possible at major conferences and exhibitions throughout the Member States, always attract a crowd and this year was no exception. Over 180 participants attended the meeting.



I am interested in receiving information on

CORDIS ON-LINE DATABASES

CORDIS DATABASES ON CD-ROM

WATCH-CORDIS

Name

Organisation/Company

Address

City

Country

Are you an ECHO user? If so, please provide your User Reg. No. 000

ECHO/CORDIS Customer Service, B.P. 2373, L-1023 Luxembourg.
CORDIS-L fax (+352) 34 98 1248

