

Message in a database

We are pleased to announce the launch of a database dedicated to the famous "stoppres" messages displayed on the ECHO host. The database comprises all messages which have been displayed over the years which inform our users of important events, changes and features relating to the ECHO host and other matters.

The stoppres messages are changed regularly (at least every fortnight) and so this gives users an indication of the updating frequency of the database. The database is easy to search and only has four fields, namely:

Date of publication / Title
Text / Descriptors.

The stoppres messages are generally written in English but you may find that messages have also been written in other languages.

Happy searching!

New EMIRE questionnaire

EMIRE users will notice that a questionnaire regarding EMIRE has been implemented on the system. Users of the database who complete the questionnaire will automatically receive a newsletter from the European Foundation for the Improvement of Living and Working Conditions which is entitled "P+: European Participation Monitor".

The newsletter aims to act as an international forum for the discussion of various questions concerning workers' participation in Europe.

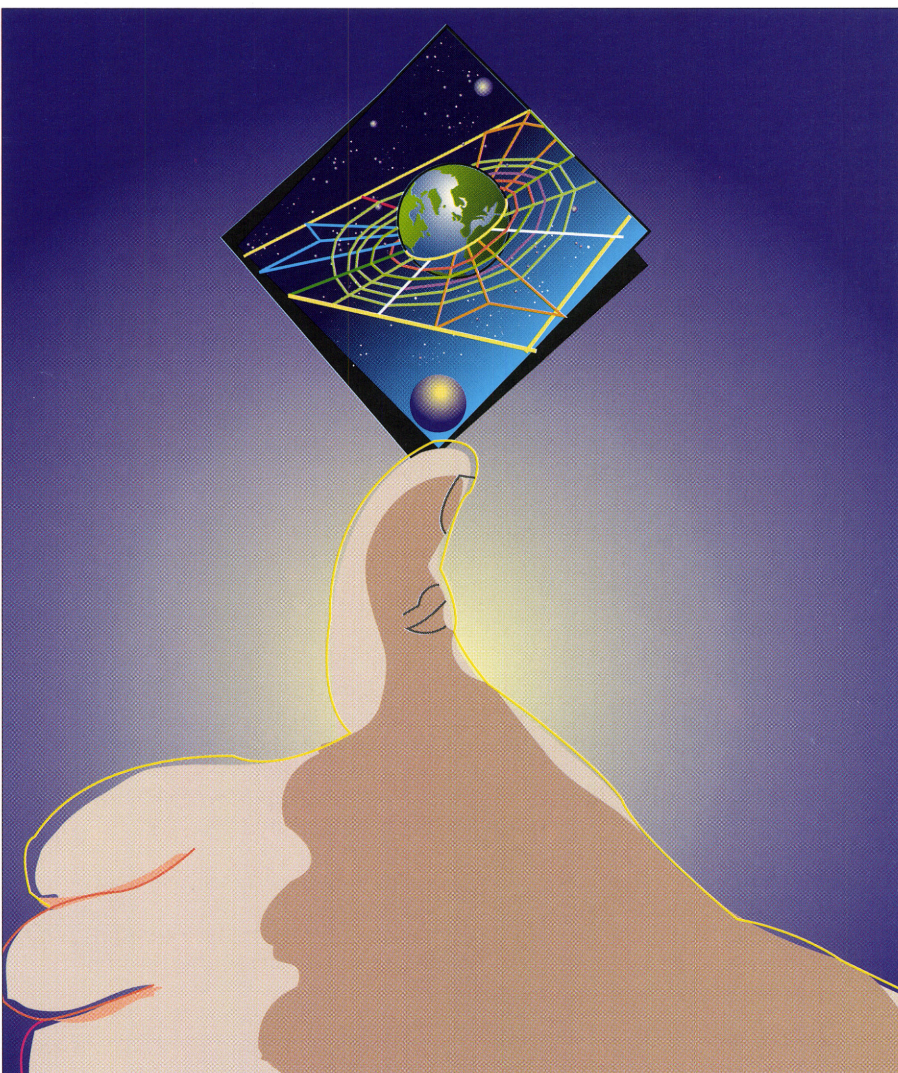
If you have any questions regarding the EMIRE database please contact ECHO.



In this issue:

I'M EUROPE	pp. 1-2
TED	p. 6
NAPs	pp. 8-9
CORDIS	pp. 10-11

One year of successful operation



I'M-EUROPE (<http://www.echo.lu>) has now been in operation for one year. In the course of its operations the server has shown a high level of dynamism in terms of coverage, quality and innovation and has acquired a prominent position in cyberspace. It is now a major player in the dissemination of information and provision of services related to the European electronic information services market.

I'M-EUROPE aims to promote public awareness on the activities of DG XIII and to stimulate the European elec-

tronic information services market and render it conducive to innovation and growth. The server offers three online discussion forums and an E-mail gateway in order to stimulate communications and discussion among the players (producers, brokers and consumers alike) involved in the electronic information services market.

Interest in I'M-EUROPE is continuing to grow. There were 169.189 document accesses in June compared with 164.326 in May. The BBS (Bulletin Board Service) is by far the most popular service (it has attracted 23.621 accesses in June). This denotes the

need for online communication and discussion forums. We have now introduced a system of remote moderation for the BBS which will make it easier to administer the service. Other popular services are ECHO (6292 accesses), the What's new page (4802 accesses) and the search tool Index-Europe (4240 accesses).

I'M-EUROPE is obviously exciting considerable interest across Europe and in the USA. Accesses from the EU represent almost 60% of the total document accesses. The largest national user group is the UK (8.82%) followed by Denmark (7.15%). Document accesses from the USA account for 15.20% of the total.

I'M-EUROPE: Future Directions

The new I'M-EUROPE's home page

A new page for the server will soon be implemented. The presentation and structure of the new home page reflect the contents of the server and its coverage of the issues relating to INFO2000, IMPACT, ECHO, the Telematics Applications programme and the new ICT and GST pages. The new proposed home page can be viewed by accessing : <http://www.echo.lu/test/newhome.html>

Increased mobility between I'M-EUROPE and ECHO

It is planned to increase the mobility between I'M-EUROPE and ECHO to give I'M-EUROPE users user-friendly access to the ECHO databases and services. An HTML terminal and a generic CCL interface have therefore been developed and will soon be implemented on I'M-EUROPE.

The HTML Terminal

The HTML-Terminal will provide WWW access to ECHO's menus running on the BS2000 mainframe. It will provide a temporary solution to access ECHO CCL databases via WWW before the implementation of the generic CCL interface. The implementation of the HTML terminal has now been completed and the service is now online.

The Generic CCL Interface

The development of a generic WWW gateway to all the ECHO databases will be implemented in 1995. The gateway should be accessed directly from I'M-EUROPE's and the NAPs' home pages. The WWW generic CCL interface will hide the complexities of the CCL and offer users a robust and graphic gate-

way to the ECHO databases. All the ECHO databases available to X.25 users via the GUI WATCH-ECHO interface will be available to Internet users via the WWW with similar functionalities.

Documents recently added to I'M-EUROPE

The documents recently added to I'M-EUROPE include:

- Multimedia content for the Information Society
An information note, full programme details and an online registration form for the event: Multimedia content for the Information Society to be held in Linz (Austria) on September, 25-26 1995.

- The ICT Partnership
The ICT (Information and Communications Technology Partnership) is a DG-XIII initiative which groups together the users, the suppliers and the professionals in order to enhance their role in the development of the Information Society.

- The OII standards and specifications list has been extended to cover the area of library Information Interchange Standards, describing about 80 standards in that area.

- Advanced Communications Technologies and Services (ACTS)
Call for Expressions of Interest to be associated with an RTD programme in the area of Advanced Communications Technologies and Services.

- Multimedia Educational Software Task Force
Call for Expressions of Interest as published in the Official Journal on June 15.

- A Survey of Distributed Networked Multimedia Research Teams
A survey of 46 organisations involved in distributed multimedia research. The areas of current activities of each organisation are described together with contact information.

- Version 1.16 of Watch-ECHO
Watch-ECHO is a Windows application which provides easy access to the ECHO on-line databases via a modem, X.25 connection or Local Area Network and off-line via the CD-ROM. Running on any standard PC equipped with Microsoft Windows. Version 1.16 of the package and the Postscript version of the user manual are available for ftp. The software has been downloaded over 363 times.

- EUR-OP's Official TED Gateways
A complete list of all the EUR-OP's gateways in Member States. The gateways are in charge of distributing EUR-OP's commercial databases including TED. EUR-OP's new policy means that TED users are no longer able to access the database directly via ECHO but are encouraged to access via a gateway operator. This distribution policy is in line with the principle of subsidiarity and is of benefit to TED users, since it provides one-stop shopping for Community information for both ECHO and Eurobases.

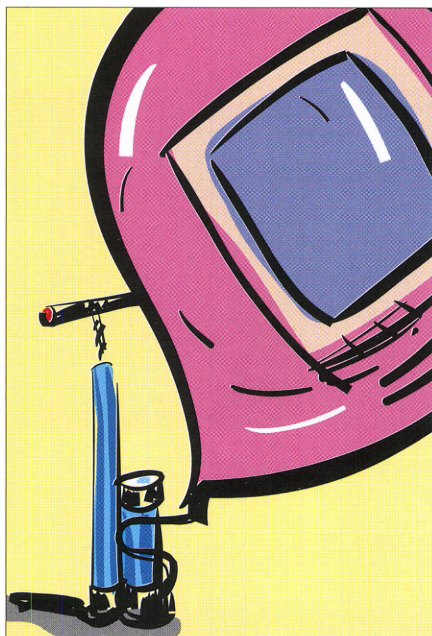
- EUROGI Press release: Geographical information research and education online.
The press release concerns the prototype of the first part of the EUROGI directories project. It is a joint effort of EUROGI, the European Umbrella Organisation for Geographical Information, and NexpRI, The Netherlands Expertise Centre for Geographical Information Processing. The prototype contains databases of European GI research and European GI training and GI education courses. The World Wide Web (WWW) interface allows for both geographical and thematic searches in the databases. The server can be accessed from: <http://www.frw.ruu.nl/eurogi/eurogi.html>. Data collection is still in process and is facilitated by an online form, ready to complete for anybody involved in GI research or GI education.

I'M-EUROPE EVENTS

- NetMedia, London 15/06/95
A presentation of the Info2000 programme was given at NetMedia 95, a major conference focusing on journalism and the Internet. I'M-Europe was presented to a large number of conference delegates. The line-up included: Mr D. Gilmour, the online editor of San Jose Mercury, Mr P. McGrath, Managing Editor of Newsweek International, and M. Strangelove, author of "How to advertise on the Internet".

- 3rd WWW concertation meeting, Brussels 20/06/95
I'M-EUROPE was presented at the 3rd WWW concertation meeting. The Consortium discussed the issues related to the co-ordination of WWW related efforts within the Commission.

Mr G.Comyn of DG XIII showed that the EC is heavily involved in WWW research and development. In addition to supporting the Web Consortium, the Commission is currently funding 16 research projects and is actively taking part in the G-7 WWW initiatives.



The number of ECHO users – registered and non-registered – has increased from over 19 000 in September of last year to more than 27 000 in July 1995. The growth in the number of users has created the need to review the existing set-up in terms of computer capacity in order to meet the growing demands placed on the host. The on-line registration form, access to ECHO via the Internet and the enhanced activities of the National Awareness Partners have contributed to a growth in usage (almost 11 000 connect hours in March 1995) which far exceeds that experienced before.

However, the increasing number of users means that our system has often been stretched to its limits. Access has been hampered by system overload – there were simply not enough access ports to accommodate all the users knocking at the door. Once connected, the system was slow in responding; at certain times of the day users were waiting for their turn.

The inconvenience faced by users in accessing and obtaining quick results from the system via whichever channel, i.e. Internet, X.25, direct dialling and the academic networks, was carefully monitored by the ECHO help desk team. Although we were aware of the difficulties users were experiencing, we were unable to react immediately since the resources were simply not available to us.

Clearly, the time had come to react and adapt to the challenge of the vastly increased demand if users were to receive the desired level of service from

ECHO increases computer capacity to meet growing demand

the ECHO host. The result is that, from 1 October this year, a new infrastructure for computer facilities will be established which will provide a 40-50% increase in the resources available to ECHO users.

The new system will allow more parallel users and therefore more Internet users at any one time than at present. Users will immediately become aware of a marked improvement in the speed of access.

In addition to taking measures to cope with the increase in users, ECHO has recognised the need to continuously monitor the performance of the computer in order to adapt in a timely fashion to changing requirements. Consequently, a monitoring mechanism has been developed which can keep an eye on ECHO's performance throughout the day. This makes it possible to react quickly and to exploit the new resources to solve problems before they get out of hand.

Among other things, the monitoring system has, to date, tested parameters such as:

- response time when typing password
- response time for the BASE TEDA command
- response time for the FIND command in the TEDA database
- response time for the SHOW command in the TEDA database
- response time for the BASE IM92 command
- response time for the FIND command in the IM92 database
- response time for the SHOW command in IM92 database
- response time for the INFO command
- response time for the STOP command.

This has enabled ECHO to experience first-hand some of the difficulties faced by users.

The results of the tests were gathered at specified test times and formatted tables and charts were produced showing the test results (please see

overleaf). Some interesting findings are briefly mentioned below.

Average time for different tests

Surprisingly enough, test results showed that the BASE command takes more time to process than any other CCL command tested. When a user asks for a connection to a database the system processes several tests in order to check if the database requested by the user actually exists. The system also has to find out if the user has permission to access the requested database before allowing access.

The time needed to trace data requested during a FIND or a SHOW command is less since most of the data at this level are already checked. The system does not have to carry out checks in the same way.

Peak times...

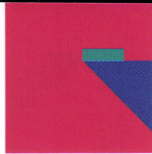
11.00 a.m., 14.00 hrs and 17.00 hrs are ECHO's busiest times with the highest number of users connected. Response time can be affected by database updating procedures, work on ECHO's customer database and the use of the on-line registration facility.

Feedback from you

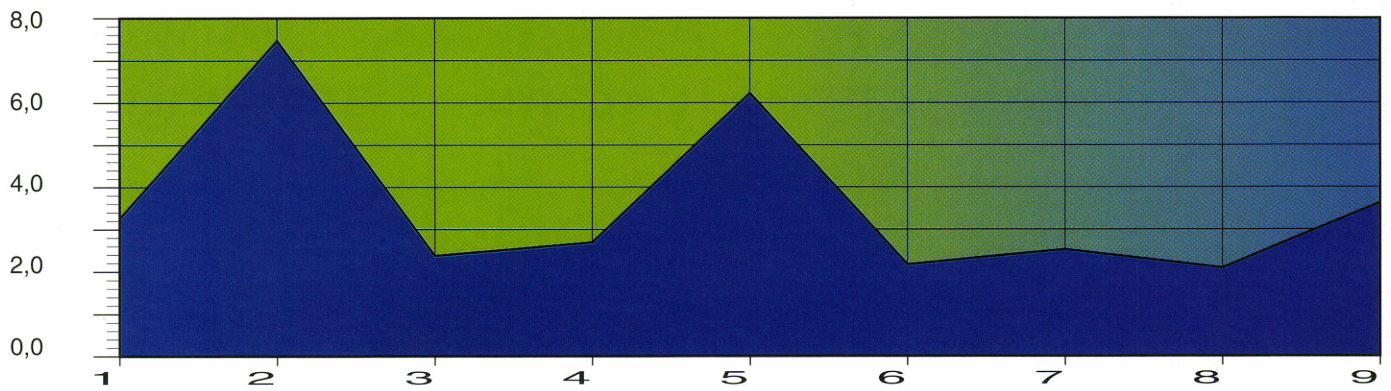
If you have any questions regarding any aspect of this article please do not hesitate to contact the ECHO help desk. If you have any specific points to make about accessing ECHO from your country, via whichever channels, we would also like to hear from you. Further details on the technicalities of the new system will be covered in the forthcoming issue of this publication.

ECHO
B.P. 2373
L-1023 Luxembourg.

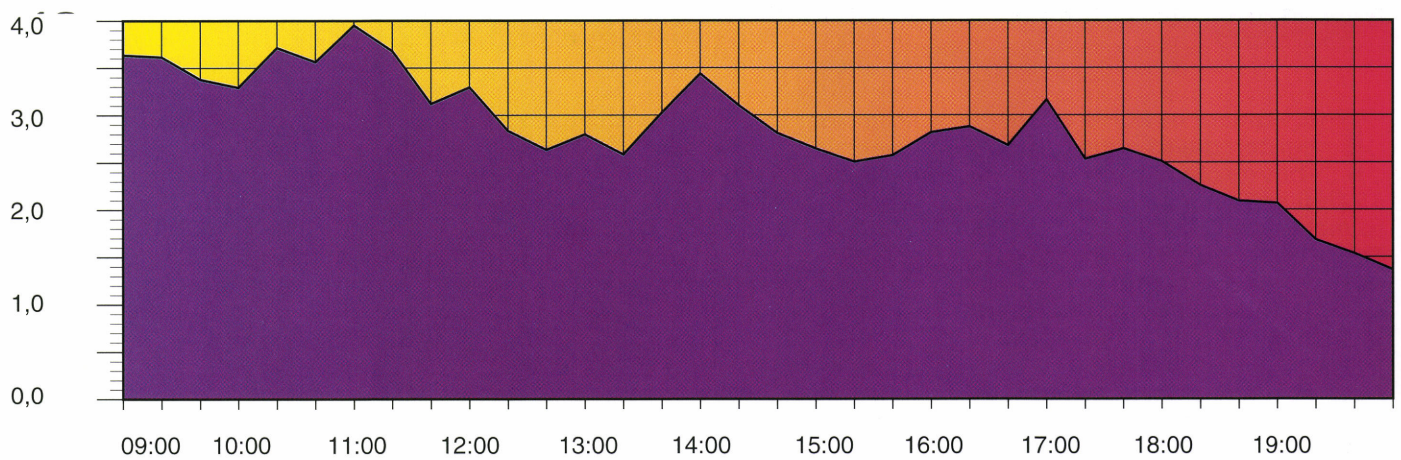
Tel.: +352-34981-200
Fax: +352-34981-234
E-mail: echo@echo.lu



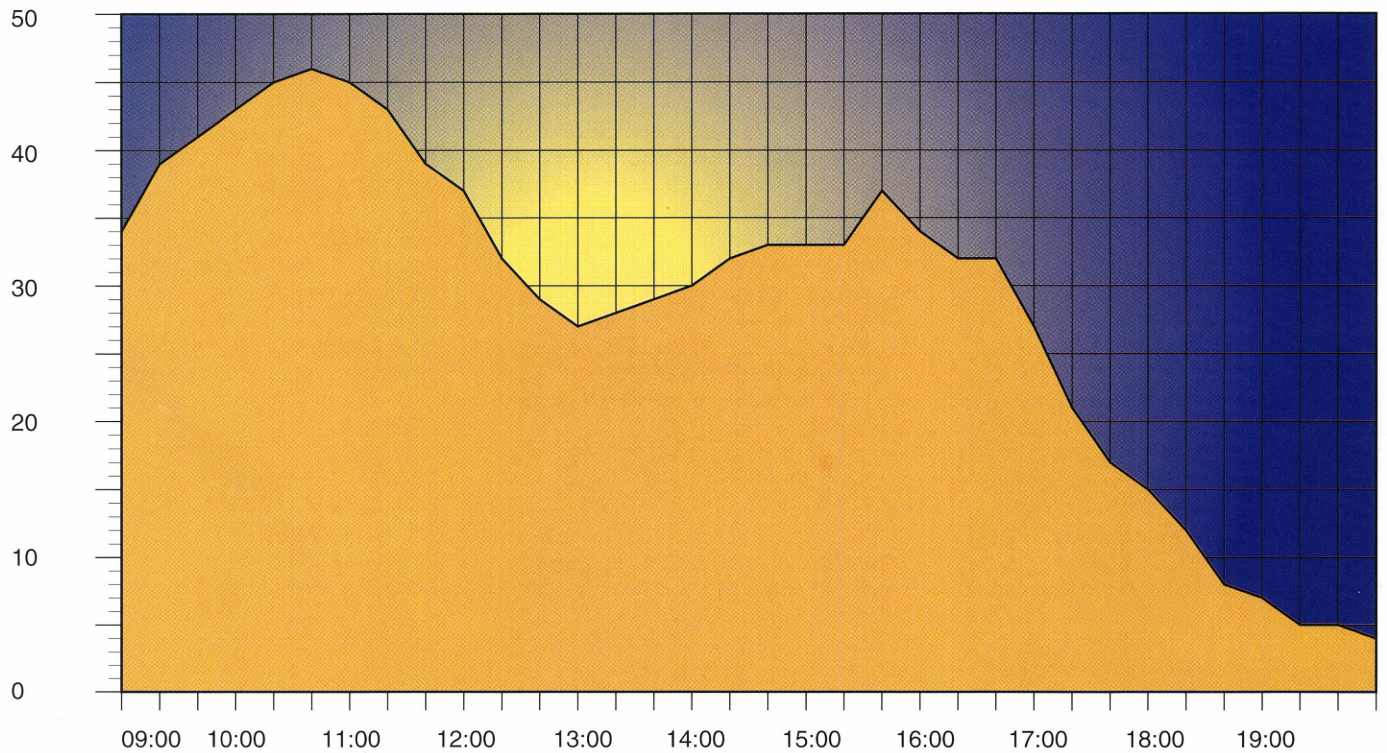
AVERAGE TIMES FOR THE DIFFERENT TESTS (SECS)



TOTAL RESPONSE TIME FOR THE TESTS AT DIFFERENT HOURS (SECS)



NUMBER OF USERS AT DIFFERENT HOURS





In the last issue of ECHO Facts for Users we gave information on the impending INFO2000 programme. In this issue we are able to provide more detailed information about the specific action lines of the programme.

On 30 June 1995 the European Commission formally approved the proposal for a multi-annual Community programme to stimulate the development of a European multimedia content industry and to encourage the use of multimedia content in the emerging information society. The proposal has been communicated to the European Parliament and Council, and to the Economic and Social Committee and the Committee of the Regions, before the programme is adopted later this year.

What is INFO2000 about?

INFO2000 is a programme of DG XIII (Telecommunications, Information Market and Exploitation of Research) to encourage Europe's information providers to develop new multimedia products and services and to stimulate user demand for these products and services. It will focus on the transition from print to electronic publishing and on the interactive multimedia services that are currently emerging. The programme will be managed by DG XIII/E in Luxembourg and will run for a period of four years (1996-1999). The budget proposed for INFO2000 is 100 MECU.

INFO2000 ACTION LINES

The INFO2000 actions build on Europe's basic strength in content and address some of the structural weaknesses of the information industry and multimedia market in Europe. They aim at accelerating market uptake of multimedia products and services, at unleashing the economic and cultural

INFO2000: Scribe to Screen

European Commission approves new EU programme to stimulate European multimedia content industry

potential of public sector information, and at strengthening the international and pan-European dimension of the emerging European multimedia content industry.

Action line 1 – Stimulating demand and raising awareness

What information is on offer and where? How can I access this information and under what conditions? These are the fundamental questions asked by people who need to use electronic information. INFO2000 activities will help provide the answers and make the market more transparent. A pan-European network of some 50 organisations located throughout Member States will help users, particularly in small and medium-sized companies, to make efficient use of multimedia information.

In addition, services and products on offer do not always correspond to the real market needs. The creation of pan-European user groups will be encouraged to organise the market demand side more effectively and to initiate dialogue with multimedia producers in order to improve the responsiveness of their services to user needs.

Action line 2 – Exploiting Europe's public sector information

The public sector owns vast resources of information which are extremely valuable for both individuals and business users, as well as for information providers, as raw material for value added services. For example, access to health information by individuals may be as important as access to company information by business users. Much of this type of information is held by the public sector. However, the access to this information is often difficult and cumbersome across EU Member States. Better access to, and exploitation of, public sector information resources is a major element in the INFO2000 initiative. Actions will include the development of policies to facilitate access and exploitation under reasonable conditions, the linking of directories describing public sector information resources, and guidance for users in accessing these resources. There will also be support for the creation of inventories of digital information collec-

tions which will assist the creators of multimedia information services to find the raw material they need.

Action line 3 – Triggering European multimedia potential

Multimedia and global competition constitute major challenges to Europe's information industry which is traditionally used to operating in national or regional environments and which needs to develop new ways of creating, packaging and marketing information to cope with emerging trends. INFO2000 will support the production of high quality European multimedia content in three strategic areas: exploitation of Europe's cultural heritage, business services for small and medium-sized companies, and geographic information. The creation of multimedia information products often requires the acquisition of vast numbers of copyright licences from many authors and a large variety of collecting societies. INFO2000 aims to help establish improved procedures for trading such rights across Europe, which will make this process considerably more straightforward and more economic. Finally, this action line will support the exchange of best business practice at European level with a view to achieving a high quality level within the European information industry.

Support actions

The actions will be supported and their effects enhanced through a number of programme support actions that will address horizontal issues relevant to all action lines, such as analysing developments in the multimedia market, spreading the use of technical standards and encouraging skills development.

Contact for further information:
European Commission
DG XIII/E, Office B4/17
L-2920 Luxembourg

Tel.: +352 4301 32560
Fax: +352 4301 34079
E-mail: j.hoorens@mhsg.cec.be

The INFO2000 programme proposal is available on the Commission's I'M-Europe WWW server (<http://www.echo.lu/>).

Regular TED users will remember that ECHO introduced, in 1994, the OT (Original Text) field, which provided the original text of the document and the translated version.

TED is translated into all official languages of the European Union and therefore documents can be submitted to the Office of Publications in any EU language and are translated before being loaded onto the database. The original language text is always legally binding and it was for this reason that the database producer decided to introduce this feature.

With this in mind, ECHO is pleased to announce that the same feature will be introduced for the Abstract (AB) field. A new field OA (Original language Abstract) is now available. It can be consulted separately by the user (type S F=OA) or it will appear in the standard document output format (SHOW). The field does not appear in the full format of the document since it would duplicate the OT (Original Text) field.

A typical example looks like this:

s f=ti;ab;oa;

1.00/000004 ECHO: -TED /COPYRIGHT ECHO
 TI: SE-Oerebro: food products and beverages
 AB: Goods, CPA reference number: CPV:
 01112000, 01121000, 01131000,
 05001200, 15000000, 15811000,
 15971000, 15981000.

Food products and beverages. Other vegetables, fresh or chilled. Grapes.
 Fish, fresh or chilled. Potatoes and dried vegetables. Bread, fresh pastry goods and cakes. Malt. Mineral waters and soft drinks.

OA: Varornas art och maengd, CPA-referensnummer: CPV: 01112000, 01121000, 01131000, 05001200, 15000000, 15811000, 15971000, 15981000.
 Nedanstaaende prisuppgifter aer beraknade totalvaerden exklusive moms:
 1.) Livsmedel, frysta varor, specerier, kaffe: 62 000 000 SKR.
 2.) Livsmedel, faerskt koett: 16 000 000 SKR.
 3.) Livsmedel, faerskt fisk: 2 000 000 SKR.
 4.) Livsmedel, alkoholhaltiga maltdrycker, mineralvatten: 2 000 000 SKR.
 5.) Livsmedel, faerska groensaker, potatis, frukt: 11 000 000 SKR.
 6.) Livsmedel, faerskt broed och faerskt pasta: 4 000 000 SKR.
 7.) Livsmedel: 16 000 000 SKR.

END OF SHOW

?

News from TED

Field features

New Code TD=I "Expressions of Interest"

Expressions of Interest are usually issued by the European Institutions. Such documents give an indication of forthcoming calls for proposals, and interested participants are asked to indicate how they would answer such a call. The awarding authority is then able to decide whether or not the interested individual/organisation is able to bid in the forthcoming proposal.

These documents do not really fit neatly into the codes relating to Calls for Tender (TD=3), Requests for proposals (TD=5) or Prequalification notices (TD=4). As of September 1995, the TD=I code will be used to classify documents which are classified as expressions of interest. Documents encoded "expressions of interest" will no longer be classified under TD=3.

Take care of your password!

Did you know that you can select, change or delete your own password? If you want to make sure that your password is secure and would like to change it in any way have a look at the following. Please note that redefining your own password is only possible when using the CCL:

- Entering a new password

Type the following after the question mark:

Define password

The user will type in the new password required, for example:

➔ TCUPLRSF

ECHO will answer: NEW PASSWORD ACCEPTED

- Changing a password:

Type in the following:

Define password

The system will answer:

➔ PLEASE ENTER OLD PASSWORD

Enter the password you would like to change, e.g. TCUPLRSF

The system will ask:

➔ PLEASE ENTER NEW PASSWORD

Enter your new password and the system will reply:

➔ NEW PASSWORD ACCEPTED

- If you want to delete a password type the following after the "?" prompt:

Define password

The system will respond:

➔ PLEASE ENTER OLD PASSWORD

At which point you type in the password you want to delete. The system will confirm that your password has been deleted by replying:

➔ PASSWORD DELETED

Gateway update

Clients based in Germany and Greece have already been notified that it is now their turn to choose a gateway.

Each client was contacted individually by ECHO informing them of this changeover. All gateway users are asked to remember that the gateways operate their own help desks and TED users are now kindly asked to call their respective gateway if they have any questions.

Clients should remember that they are not obliged to use a gateway which is situated in their country.

Please tell us....

The gateway service has now been operational in at least 11 countries for some three months. The changeover mechanism was structured between ECHO and the gateways to ensure that inconvenience to customers was kept to a minimum during this changeover period.

Since the opening of more and more gateways is imminent, we would like to make sure that we are meeting the requirements of our users in this area.

If you have any comments, positive or negative, to make regarding the switchover or have any specific questions about the gateways, please let us know.

Workshop on EU Opportunities for Electronic Publishing Support

Thursday 12 October 1995,
14.00 - 17.00h, Frankfurt Book Fair

Hall 4.2, Room Hacienda

For the third year in succession DG XIII/E will organise an information event during Frankfurt Book Fair. Two years ago an IMPACT Information Day was followed by a very successful meeting of European heads of publishing houses and related industries with accompanying workshop. This gave the opportunity to present and discuss the Study on New Opportunities for Publishers in the Information Services Market. Last year's EU Information Session provided an update on the various DG XIII/E initiatives of relevance to electronic publishing.

This year's Workshop will focus on the proposed initiatives in INFO2000, the findings of the ADMEDIA study and the results of two Information Engineering feasibility studies. (See full agenda below.)

PROGRAMME

- | | |
|-------------|---|
| 14.00-14.15 | Welcome
Frans de Bruïne,
Director, DG XIII/E,
European Commission |
| 14.15-14.45 | The INFO2000
Programme
Frans de Bruïne,
Director, DG XIII/E,
European Commission |
| 14.45-15.15 | ADMEDIA: The future of
media and advertising
Brian Blunden, Chief
Executive, International
Electronic Publishing
Research Centre (IEPRC) |
| 15.15-15.45 | Information Engineering
2001: Identifying the
influential technologies
and their impact
Paul Ormerod, Director,
Meta Generics Ltd |
| 15.45-16.15 | Usability of new infor-
mation products
Elke-Maria Melchior,
Interactive ACit-Advance
Concepts for
Technology GmbH |
| 16.15-17.00 | Questions/Answers |

Your I'M Guide to educational material!



Nowadays, more and more educational establishments are recognising the importance of teaching children with the help of computers. Producers of electronic information have realised that this is the shape of things to come and there is now a vast array of CD-ROM products on the market which help schools, colleges and higher education establishments to make lessons more lively and therefore much more fun for those attending.

I'M Guide is a good source from which information on CD-ROM products can be found. The user only has to look at some of the titles included under this section of the database to realise the great leap forward that educational material has taken during the last decade. Titles range from simple CD-ROMs such as "My first incredible, amazing dictionary" to "Scary poems for rotten kids"! Multimedia tools for schools and colleges are available which bring life to poetry and other literary classics, and which even provide dictionaries – not just lexical dictionaries but those regarding chemistry, acronyms and abbreviations.

Today, encyclopaedias are also available in multimedia form. Such encyclopaedias aim to encourage both children and adults to research ideas and to develop skills. Their bulky volumes are reduced to one CD-ROM, which brings to life all the facts within.

A whole range of products (notably CD-ROMs) are available to the teacher and the learner. CD-ROMs dedicated to passing mathematical examinations in the UK are now on the market. Products have also been developed which help adults learn to read and write and extend to specialist areas, such as teaching sign language to people who are hard of hearing.

The businessman can learn French and read up about total quality management on CD-ROM.

In total you can find 312 products in I'M Guide indexed with the term "Education" (F CT=EDUCATION).

189 of these titles are available on CD-ROM, 88 as on-line databases, 15 on diskette, 4 on CD-I and 3 on other media.

References to all this and more can be obtained from I'M Guide, proving that no subject is too vast or too trivial to be included in the database.

I'M Guide CD-ROM available from the National Awareness Partners

Please note that the I'M Guide CD-ROM can be purchased from the National Awareness Partners for the sum of 50 ECU. A list of partners was included in the last issue of ECHO Facts for Users 2/95 and is also available on-line by typing INFO NAP at the CCL prompt.

It's your turn now!

You've read a lot about I'M Guide in practically every issue of ECHO Facts for Users. The articles provided have aimed at helping you to obtain maximum benefit from the database and to show the richness of the data held within.

In order to adapt the database structure and its indexing even more to the preferences of our customers we would like to receive some information from you! The questionnaire on page 8 has been devised to obtain as much information from you as possible but will not take up too much of your time. The results of the questionnaire will be used to help us to further develop I'M Guide into a database which answers the needs of its users in a user-friendly way.

Please return the questionnaire to us by 30 November at the latest.

ECHO Customer Service
(Ref. I'M Guide)
B.P. 2373
L-1023 Luxembourg

Tel: +352/34981-200
Fax: +352/34981-234
E-mail: echo@echo.lu

User details

Country of origin _____

Last use _____

Frequency of use _____

Your search strategy

- | | | |
|---|--|---|
| <input type="checkbox"/> Freetext only | <input type="checkbox"/> Freetext and Descriptors | <input type="checkbox"/> Operators and Freetext |
| <input type="checkbox"/> Descriptors only | <input type="checkbox"/> Freetext and Thesaurus | <input type="checkbox"/> Operators and Descriptors |
| <input type="checkbox"/> Thesaurus only | <input type="checkbox"/> Descriptors and Thesaurus | <input type="checkbox"/> Operators and Thesaurus |
| | <input type="checkbox"/> All of the above | <input type="checkbox"/> Operators and all of the above |

Subjects

- | | | |
|--|--|--|
| <input type="checkbox"/> Information science | <input type="checkbox"/> Philosophy | <input type="checkbox"/> Religion |
| <input type="checkbox"/> Social science | <input type="checkbox"/> Language | <input type="checkbox"/> Natural science |
| <input type="checkbox"/> Medicine | <input type="checkbox"/> Applied science | <input type="checkbox"/> Art |
| <input type="checkbox"/> Leisure | <input type="checkbox"/> Literature | <input type="checkbox"/> Geography |
| <input type="checkbox"/> History | <input type="checkbox"/> Territorial science | |

Tools

- Predominantly Freetext
 Descriptors
 Thesaurus

If you do not use one of the above, please indicate why:

- Not needed
 Negative results
 Too few hits
 Not user-friendly
 Too many hits
 Other reasons; please indicate below: _____

What do you use the database for?

Example: To look for information brokers around Marseille
 To look for companies engaged in the chemical industry
 To look for a tool with which to teach English in schools

This coupon should be returned to:

ECHO Customer Service/ Ref. I'M Guide Fax: +352/34981-234
 B.P. 2373
 L-1023 Luxembourg

**NAP activities!**

The following list is accurate at the time of going to press and covers the period from mid-September to mid-November 1995. As always, please contact your local NAP for further details, since more events may be planned which are not featured here.

AUSTRIA

ÖGDI (Österreichische Gesellschaft für Dokumentation und Information)

"Information in Europe"

Date: 25/09/95

Place: Graz

"Mehrsprachige Hypermedia Fachinformation"

Date: 10/10/95

Place: Linz

"Datenbanknutzung, ECHO, Europa, IMPACT, Internet"

Date: 16-19/10/95

Place: Hirschegg

TECHINFORM - WKÖ / Wirtschaftskammer Österreich Aussenwirtschaft

"Ausstellungsbeteiligung anlässlich der Infotage Linz-Impact"

Date: 25-27/09/95

Place: Linz

"UTEC MESSE"

Date: 17-20/10/95

Place: Vienna

BELGIUM

CNDST/NCWTD
 Centre National de Documentation Scientifique et Technique/
 National Centrum voor Wetenschappelijke en Technische Documentatie

"The Internet and the WWW's chemical databases"

Date: 04-10-95

Place: Brussels

DENMARK

INFOSCAN

"Electronic Information in the Language Industry"

Date: 18/09/95

Place: Copenhagen

"Introduction to Electronic Information Retrieval"

Date: 20/09/95

Place: Copenhagen

"Workshop EC Legal databases"

Date: 21-22/09/95

Place: Copenhagen

FINLAND

VTT Technical Research Centre of Finland

"Workshop on ECHO databases"

Date: 03-10-95

Place: Espoo

"Introductory workshop/seminar" on on-line searching"

Date: 04-10-95

Place: Espoo

"Workshop on ECHO databases"

Date: 17-10-95

Place: Espoo

"Introductory Seminar/workshop on on-line searching"

Date: 17-10-95

Place: Espoo

GERMANY

IW Institut der deutschen Wirtschaft

"ECHO-TED Schulung"

Date: 20-09-95

Place: Köln

"Messe Datenbankdemonstration"

Date: 09-10-95

Place: Kassel

GREECE

NDC - National Documentation Centre

"EURO-ISDN"

Date: 10-11-95

Place: Athens

ICELAND

SIFT/Icelandic Forum of IT&T Users

"IMPACT AND EDI"

Date: 10-10-95

Place: Reykjavik

"IMPACT and the Icelandic Software Industry"

Date: 11-11-95

Place: Reykjavik

IRELAND

BTIS University of Limerick Business Technical Information Service

"Multimedia Applications in Industry"

Date: 04-10-95

Place: Limerick

"The Information Superhighway - an overview

Date: 11-10-95

Place: Limerick

ITALY

AIB - Associazione Italiane Biblioteche

"Internet and WWW - I'M Europe"

Date: 21-09-95

Place: Rome

"Bibliotexpo"

Date: 08-10/11/95

Place: Brescia

"XLI AIB National Congress"

Date: 08-10/11/95

Place: Brescia

LUXEMBOURG

EIC - Chambre des Métiers du G.D. de Luxembourg

"Cours Internet - E-mail"

Date: 10-11-95

Place: Luxembourg

"Porte Ouverte Espace Auto-formation"

Date: 10-11-95

Place: Luxembourg

"Séminaire Télécommunications"

Date: 11-11-95

Place: Luxembourg

NETHERLANDS

NBBI - Project Bureau for Information Management

"ECHO advanced course"

Date: 06-10-95

Place: The Hague

NORWAY

INFOSØK

"Exhibition Nord IoD"

Date: 06-08/10/95

Place: Oslo

SPAIN

CINDOC Consejo Superior de Investigaciones Científicas /Centro de Información y documentación

"Seminario Taller Internet"

Date: 25-09-95

Place: Madrid

"Seminario Taller Internet"

Date: 16-18/10/95

Place: Madrid

"Seminario Taller Internet"

Date: 23-25/10/95

Place: Madrid

"Seminario Taller Internet"

Date: 24-10-95

Place: Barcelona

"Seminario Taller Internet"

Date: 13-14/11/95

Place: Madrid

"SIMO'95"

Date: 14-19/11/95

Place: Madrid

"Congress/Health Information"

Date: 15-18/11/95

Place: Madrid

ASEDIE - Asociación Española de Distribuidores de Información

"Derecho y legislación"

Date: 27-28/09/95

Place: Bilbao

"Seminarios Divulgativos"

Date: 02-10-95

Place: Bilbao

"Bases de Datos Información y Desarrollo e Información Tecnológica"

Date: 04-05/10/95

Place: Madrid

"Seminario Taller Internet"

Date: 09-10-95

Place: Barcelona

"Taller ECHO + I'M EUROPE"

Date: 09-11/10/95

Place: Cadiz

"Productos y comercio exterior"

Date: 18-19/10/95

Place: Bilbao

"Información Financiera"

Date: 07-08/11/95

Place: Bilbao

"Seminario Taller Internet"

Date: 13-15/11/95

Place: Murcia

SWEDEN

Statskontoret

"IMPACT Introduction at KFB Telematic Day"

Date: 28-09-95

Place: Stockholm

UNITED KINGDOM

Scottish Enterprise Tayside/University of Dundee

"Introduction to European Databases"

Date: 17-10-95

Place: Dundee

"Innovations and Industry"

Date: 28-30/10/95

Place: Dundee



CORDIS

Data for the CORDIS CD-ROM are now down-loaded to the CD-ROM Master disk from the Central Production System. "Ho hum," you say and yawn. And well you might. This sort of operation is both esoteric, and invisible to users, but it is another small improvement to the service. It really is. This policy change provides more up-to-date data for the CD-ROM. It is typical of the ongoing small improvements in the service. To some people such details may be insignificant, and in isolation they may be. But this attention to the individual details that are in themselves unimportant, together, provides a superior and high quality service.

We have also proved out a system that enables information for database entries to be submitted electronically, via the World Wide Web. Data validation may also be done electronically. These arrangements should enable records to appear on the on-line database very soon after the data have been submitted.

Similarly, CORDIS currently offers a limited electronic document delivery service via the World Wide Web using de facto standard word-processing document files. This is the Fourth Framework Document Library and a wide range of documents relating to the Fourth Framework Programme and the ongoing Calls can be browsed or downloaded. This service is continually being expanded and it is intended that word-processor files will be supplemented using other appropriate standards such as portable document files (PDF files).

It is envisaged that more extensive use of electronic information collection and distribution techniques will be implemented in the future. In conjunction with improved data validation methods, and the continual efforts to reduce things like CD-ROM production lead times, CORDIS will continue to improve the currency and availability of its data.

Continuing improvements to CORDIS

Whilst implementing those actions we shall also be making efforts to improve data quality, liaising with data providers, users, and CORDIS Multipliers. Much of this work overlaps, and, for example, providing CD-ROM data via the Central Production System as mentioned above also improves data quality and production reliability. The usability of the various media through which CORDIS disseminates data is another area where we are working hard. Part of this is the implementation of the databases, operating systems, and users documentation in other languages.

This particular ambition is confounded by the practical problems of disseminating data from the ECHO Host in 8-bit form which is needed for the extended ASCII characters used in many European languages. ECHO can be interrogated using a whole variety of hardware platforms ranging from handheld personal computers to mainframes. The problem is that not every hardware platform uses ASCII code. Even the ubiquitous PC uses ASCII code in DOS mode and ANSI when operating under Windows. Only those characters within the range between 23 and 126 are identical in both ASCII and ANSI. Therefore, even with the same code page set for DOS and Windows, the same text files will display different characters outside the range 32-126 when viewed in DOS and Windows, if the correct ANSI/ASCII code is not used. There are also differing codes used on other hardware platforms. Basically, unless we know what code any particular CORDIS user is using we cannot transmit the correct characters. There is also the question of the user who has a simple 7-bit terminal: how does he view 8-bit data? These points only scratch the surface of this problem, but they start to illustrate the extent of the technical problems that need to be resolved at each progressive step forward.

The other practical problem is financial. Although CORDIS is properly funded, it is not in the position to solve problems simply by throwing vast amounts of money at them. Such techniques have been used in the past, but not by the Commission we hasten to add, and have proved successful in certain

instances. Unfortunately the good times are no longer with us. We now have to think long and hard – thinking is relatively cheap – and we have to wait to tackle tasks when the resources become available. In the end this process tends to produce the more economical solutions.

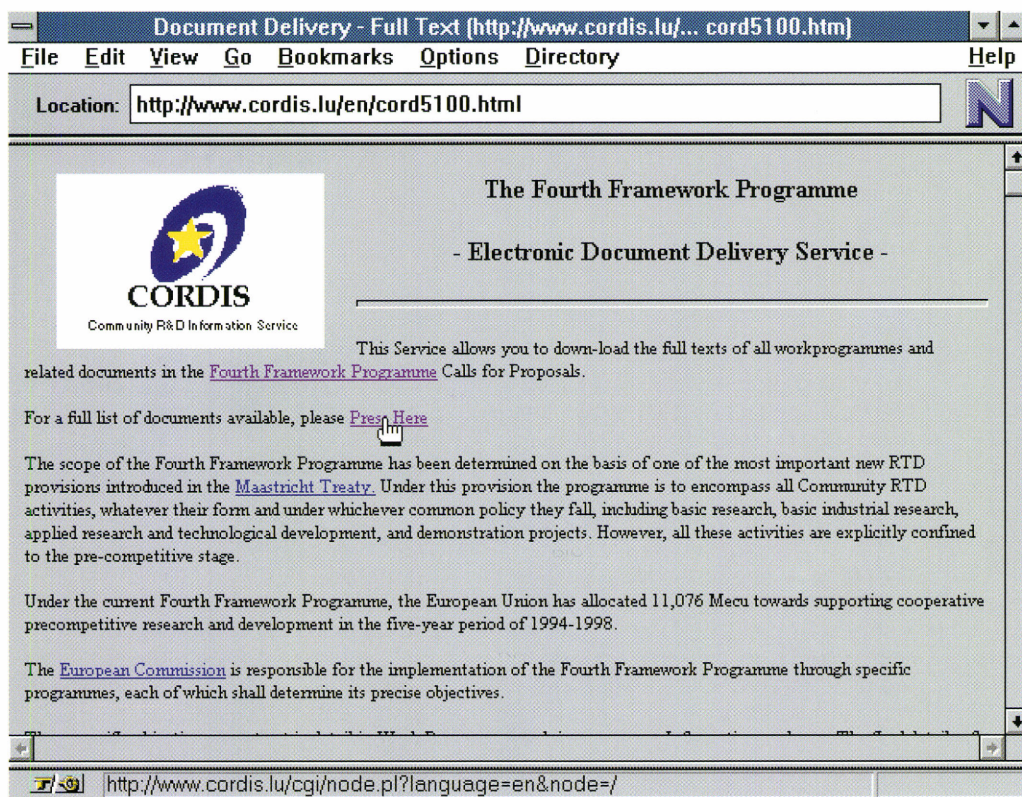
We are already looking towards new technologies like multimedia to see where this might be used beneficially and cost-effectively. Meanwhile we continue to work on quality, to rationalise databases adopted from different sources, and to improve data currency.

Activities implementing new technologies run in parallel with the dissemination of data in the more traditional ways. These include hard copy publications such as CORDIS-focus. Alongside the technical and production activities we continually work to promote CORDIS throughout the European Community. Although much of this promotion takes place at fairs and exhibitions, we rely greatly on the network of Relay Centres as local promotional agents, and more recently, on the Office of Official Publications to promote sales of the CORDIS CD-ROM as widely as possible.

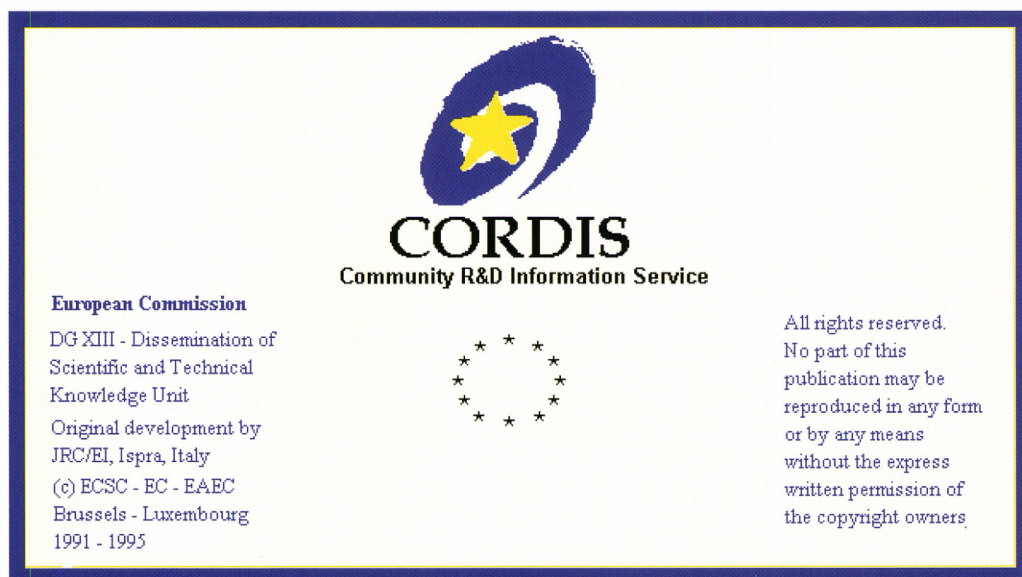
It remains an important objective to disseminate the information provided by CORDIS as widely as possible throughout the European Union.

CORDIS Customer Service
BP 2373
L-1023 Luxembourg

Phone: +352 3498 1240
Fax: +352 3498 1248
e-mail: helpdesk@cordis.lu
www: <http://www.cordis.lu/>



◀ The Fourth Framework Document Library Home Page. New techniques such as the provision of information in suitable electronic form will enable users to obtain the full text of documents at any time.



◀ Behind the new CORDIS CD-ROM introductory screen lie subtle improvements to data currency and quality.



I am interested in receiving information on

CORDIS ON-LINE DATABASES CORDIS DATABASES ON CD-ROM Watch-CORDIS

Name

Organisation/Company

Address

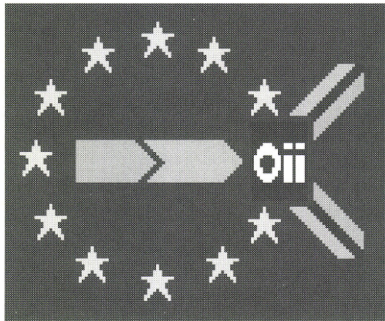
City

Country

Are you an ECHO user? If so, please provide your User Reg. No. 00

ECHO/CORDIS Customer Service, B.P. 2373, L-1023 Luxembourg.
CORDIS fax (+352) 34 98 1248

Which Standards should I use for Open Information Interchange and Why?



An open Workshop organised jointly by the European Commission DG XIII OII Initiative and EWOS

30 & 31 October 1995
Royal Crown Hotel, Brussels

Objective

The purpose of this workshop is to enable participants to:

- learn about the latest developments in OII standards and their application
- exchange experiences of implementing and using these standards
- discuss the issues and problems in OII
- come to a decision on which standards to be used in their specific environment
- contribute to developing recommendations on actions.

The scope of the Workshop covers both standards and specifications for the multimedia content markets.

Format and Specific Themes

The 1.5 day Workshop (starting at 14:00 h on Monday) will include presentations from leading industry experts and panel discussion.

Specific themes will include:

- standards and specifications for platform independent applications - what is being used? what is being planned? what is missing?
- the role and requirements of "electronic librarians" - what is needed to

help information providers to provide and disseminate information? What is needed to help users to find and access the information?

- using OII standards: legal implications, multilingualism and the cultural aspects.

There will be an exhibition of available and prototype products for facilitating Open Information Interchange at the Workshop.

The Workshop will be chaired by Ms Man-Sze Li of DG XIII/OII Support Team and Chairperson of the EWOS Expert Group on EDI.

Intended Participants

The Workshop is aimed at:

- information providers who want to understand how available and emerging OII standards and specifications will impact their offerings
- information users who want to understand how available and emerging OII standards will enhance their business practices
- standards developers who want to ensure that the standards output incorporates the changing needs of the multimedia content industry
- consultants who want to be kept up-to-date on the players of the multimedia content industry and their interests
- anyone who wishes to contribute to recommendations on actions to be taken in addressing issues and problems in the OII environment.

There will be no participation fee.

To Join In

If you wish to participate in this Workshop, you are invited to register by sending a fax or an e-mail to Mr Gerhard Heine at DG XIII/E of the European Commission (Fax: +352-43013-3190 E-mail:gerhard.heine@lux.dg13.cec.be).

Please include your full contact details (name, job title, organisation, postal address, telephone and fax numbers, Email address), so that we can forward additional material to you by the most appropriate means.

If you would like to exhibit at this Workshop, please send details as above, including information about the product you would like to exhibit. Exhibition space will be provided free-of-charge.



ECHO will be represented at the following events:

Frankfurt	"Buchmesse 95" 05-10/10/95
Milan	"Biblio-Expo" 08-10/11/95
London	IOLIM 05-07/12/95



ECHO Facts for Users is a Communication of the European Commission Host Organisation to its users.

A service provided by the Commission of the European Communities - DG XIII: Telecommunications, Information Market and Exploitation of Research.

Printed by: Merziger Druckerei Merzig, Germany

Editor: Jane Sanderson

The views expressed do not necessarily reflect those of the Commission.

Catalogue no. EUR-OP CD-AA-95-003-EN-C.

ECHO P.O. Box 2373
 L-1023 Luxembourg
 E-mail: echo@echo.lu