

Quarterly national accounts – ESA

2 □ 1987 Quarterly

GDP for the Community up slightly (+3%) in an unstable international environment

Production rose in all the Community countries, with the exception of the United Kingdom. However, the increases are less marked than those recorded in the second quarter of 1986, reflecting a somewhat uncertain situation. As they were accompanied by an all-round expansion of imports, total resources increased in all the Community countries.

There was an improvement in all uses of GDP in almost all the Member States. There was, however, a slight decline in consumption in France and a further reduction in exports by the United Kingdom, reflecting the continuing lack of competitiveness of the British economy. There was again a slow-down in the growth rate for the current year, compared with that of the previous year, with the exception of investment in Italy and the United Kingdom. In short, it is apparent that private consumption is continuing to fuel demand, since from the public sector demand is virtually stagnant, with the result that some governments have decided to adopt policies to curb demand, particularly for consumer goods, to ward off the danger of a fresh round of inflation and offset the growing deficit in the balance of payments.

To turn to the trade balance, with the exception of United Kingdom exports, imports and exports are rising fairly steadily; however, imports are expanding at a more rapid pace, with the result that the trade balance continues to deteriorate. The fall of the dollar at the beginning of the year is presumably the main cause of this state of affairs, and the fact that for the most part exports by the Community countries are also continuing to expand should be taken as evidence that our products are very competitive in international markets. The results of subsequent quarters will show whether these trends continue.

To turn to the United States and Japan, the United States unquestionably benefited from the downturn of the dollar, in that it reduced its deficit, while at the same time increasing production and investment. Japan, however, was the only country where production stagnated, largely due to a decline in exports. On the other hand, domestic demand (including investment) remained strong leading to quite a substantial increase in imports.

In conclusion, all the Community countries recorded reasonably satisfactory results for the quarter under consideration, although there is still some uncertainty due to the slow-down of the production growth rate and the deterioration in the trade balance. Subsequent quarters will give some indication of how these indicators are to be interpreted.

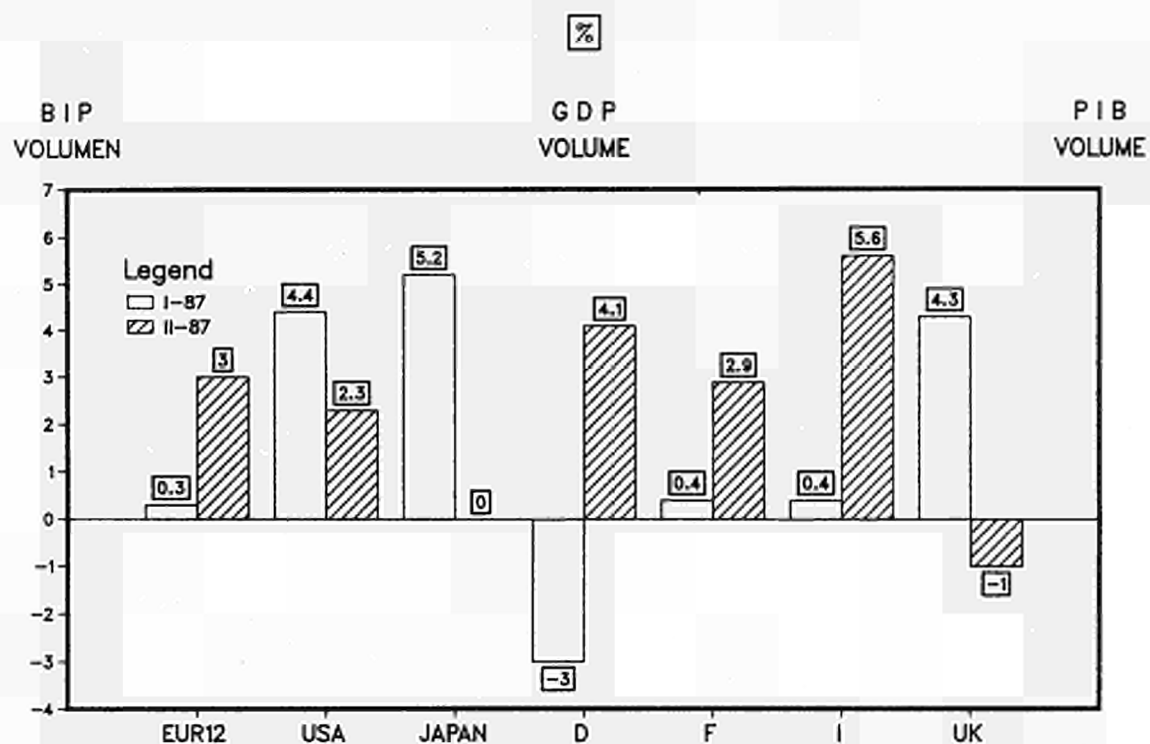
OFICINA ESTADÍSTICA DE LAS COMUNIDADES EUROPEAS
DE EUROPÆISKE FÆLLESSKABERS STATISTISKE KONTOR
STATISTISCHES AMT DER EUROPÄISCHEN GEMEINSCHAFTEN
ΣΤΑΤΙΣΤΙΚΗ ΥΠΗΡΕΣΙΑ ΤΩΝ ΕΥΡΩΠΑΪΚΩΝ ΚΟΙΝΟΤΗΤΩΝ
STATISTICAL OFFICE OF THE EUROPEAN COMMUNITIES
OFFICE STATISTIQUE DES COMMUNAUTÉS EUROPÉENNES
ISTITUTO STATISTICO DELLE COMUNITÀ EUROPEE
BUREAU VOOR DE STATISTIEK DER EUROPESE GEMEENSCHAPPEN
SERVIÇO DE ESTATÍSTICA DAS COMUNIDADES EUROPEIAS

L-2920 Luxembourg – Tél. 43011 – Télex: Comeur Lu 3423
8-1049 Bruxelles, bâtiment Berlaymont, rue de la Loi 200 (bureau de liaison) – Tél. 235 1111

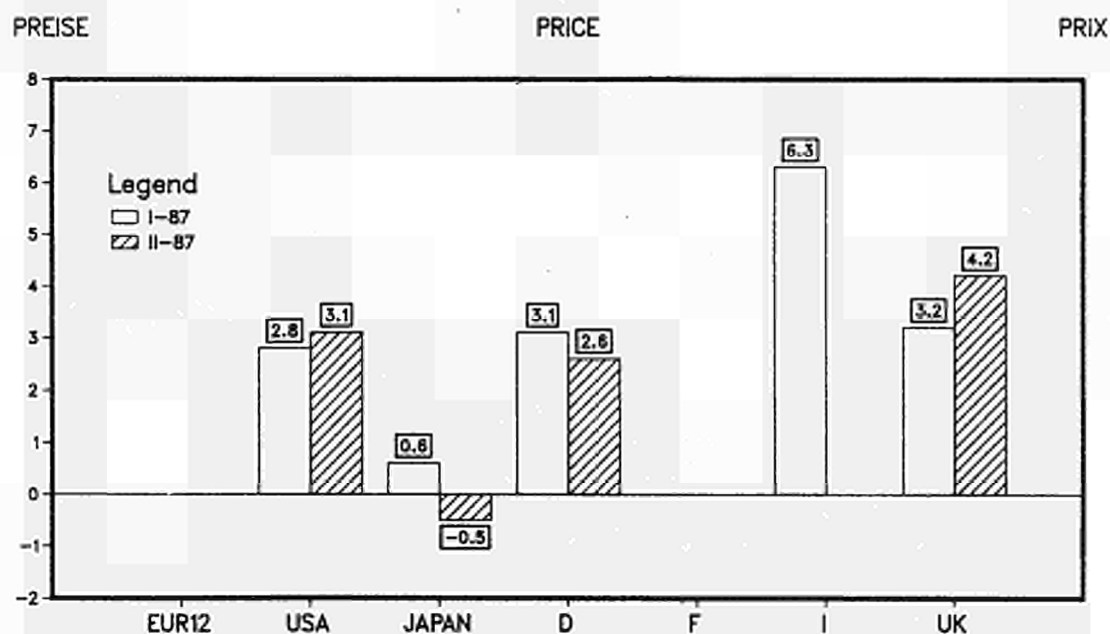
The information included in this bulletin has been taken from the Cronos data bank, which is accessible via the different host companies. For all information about these host companies contact Eurostat in Luxembourg, tel. 4301-3220. To obtain specifications of the principal characteristics of the series contained in this bulletin contact Luxembourg, tel. 4301-3521.

Symbols and abbreviations

:	No data available
–	Nil
%	Per cent
1980 = 100	Reference year
EUR 12 = 100	Data for countries expressed as a percentage of the Community of 12 total
ESA	European System of Integrated Economic Accounts



% Veraenderung zum letzten Quartal, sahs. ber., als jahresrate
 % change compared with previous quarter, seas. adj., at annual rates
 % par rapport au trimestre precedent, cvs, a taux annual



% Veraenderung zum gleichen Quartal im Vorjahr(sais. ber.)
 % change compared with corresponding quarter of the previous year (seas. adj.)
 % par rapport au trimestre correspondant de l'annee precedente (cvs)

BIP - VOLUMEN

GDP - VOLUME

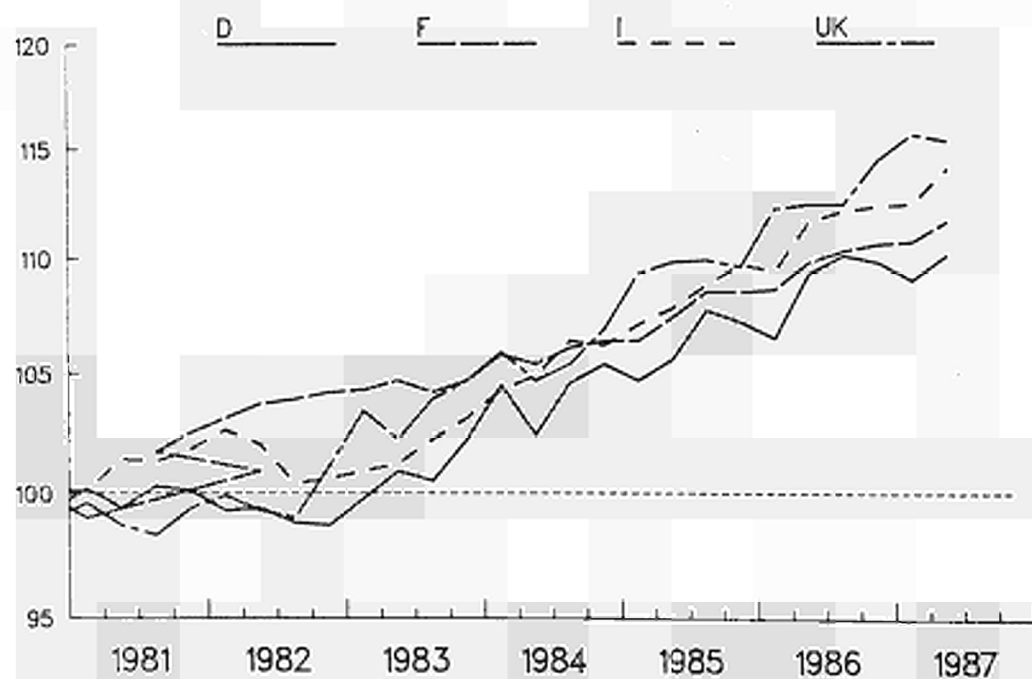
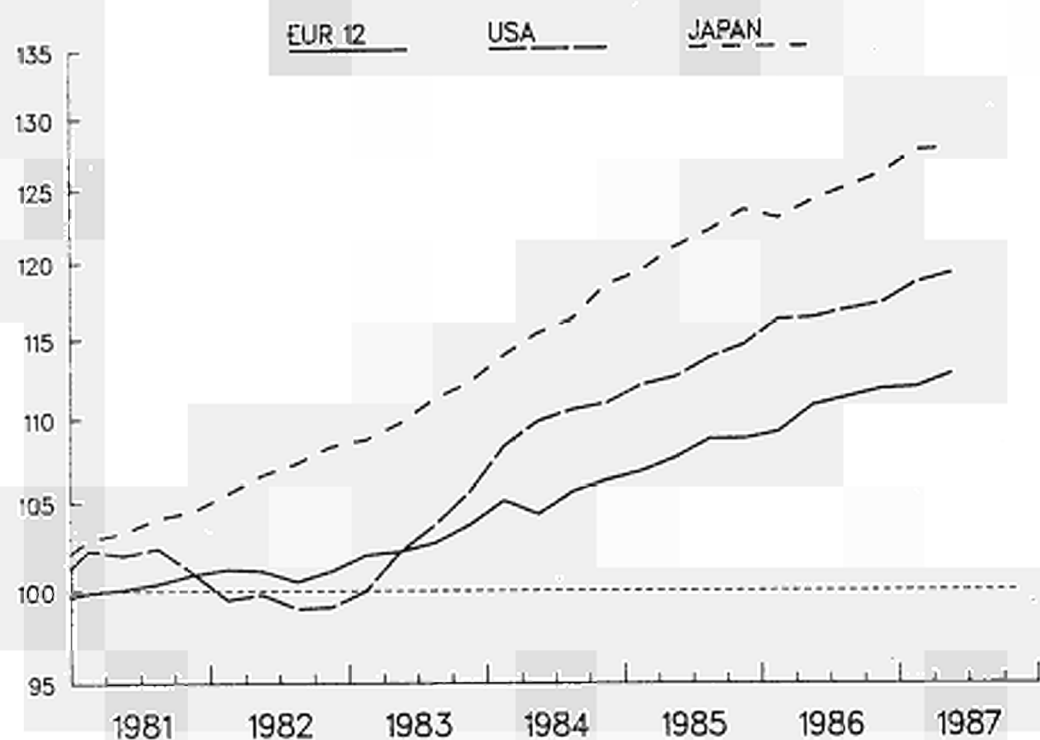
PIB - VOLUME

TENDENZ

TREND

TENDANCE

1980 = 100



EINFACH-LOGARITHMISCHE SKALA

SEMI-LOGARITHMIC SCALE

ECHELLE SEMI-LOGARITHMIQUE

GROWTH OF GDP AND ITS COMPONENTS X VOLUME									
	GDP	PRIVATE CONSUMPTION	GOVERNMENT CONSUMPTION	GROSS FIXED CAP. FORMAT	CHANGE IN STOCKS (1)	DOMESTIC DEMAND	EXTERNAL BALANCE (1)	EXPORTS	IMPORTS
EUR 12									
1985	2.5	2.5	1.8	2.3	0.8	2.4	1.2	4.8	4.6
1986 (M)	2.5	2.5	2.1	3.6	2.2	3.8	-0.1	1.3	5.8
1987 (M)	2.2	2.1	1.9	4.1	1.9	3.1	-1.0	2.3	5.4
1988 (M)	2.5	2.8	1.6	3.7	1.9	2.7	-1.4	3.4	4.5
1985 II	2.9	2.1	2.5	-1.0	-0.1	1.4	1.3	4.0	-1.1
III	4.3	6.4	2.0	6.4	1.0	6.1	0.9	-1.1	4.7
IV	-0.1	2.2	3.2	-0.4	0.4	1.2	0.6	3.4	8.1
1986 I	1.3	3.6	0.4	-3.2	-0.6	2.2	0.4	-7.9	-5.1
II	6.1	6.3	3.2	10.4	1.8	7.3	0.1	15.0	19.2
III	1.8	3.8	3.0	1.6	2.2	4.6	-0.6	-0.9	8.6
IV	1.9	1.5	0.0	2.5	2.0	2.2	-0.7	-2.4	-1.1
1987 I	0.3	1.4	0.3	-6.4	3.3	1.0	-0.9	-2.9	-0.4
II	3.0	5.9	2.2	11.1	3.3	5.4	-1.5	2.9	11.0
UNITED STATES									
1985	3.0	3.4	4.5	8.4	0.6	3.5	-5.0	1.4	5.3
1986 (M)	2.5	4.1	3.5	1.9	0.2	3.2	-8.0	2.5	10.4
1987 (M)	2.3	2	1.8	0.8	0.2	1.9	-5.7	7.4	2.8
1988 (M)	2.5	2	1	3.7	0.4	1	-3.5	5.7	2.8
1985 II	2.1	4.0	4.9	10.2	0.7	4.8	-4.1	-5.4	19.3
III	4.0	6.7	14.9	0.3	-0.2	3.6	-4.2	-4.6	2.5
IV	3.1	1.2	8.2	10.2	-0.1	4.7	-4.7	6.7	17.2
1986 I	5.2	6.4	-8.5	-3.6	1.3	6.0	-4.4	5.5	-1.1
II	0.6	4.1	7.6	-0.9	1.1	2.8	-5.1	-1.4	18.3
III	1.4	7.1	3.0	0.8	0.2	2.0	-5.6	10.2	18.7
IV	1.5	0.5	7.7	4.1	-0.5	-0.5	-5.3	9.2	-6.8
1987 I	4.4	-0.7	-6.3	-13.1	1.8	5.0	-4.7	9.8	-5.3
II	2.3	2.1	4.2	5.1	1.0	0.1	-4.7	11.6	7.2
JAPAN									
1985	4.5	2.4	2.0	5.6	0.9	3.8	3.9	4.4	-0.4
1986 (M)	2.5	2.7	6.6	6.6	0.7	4.1	2.6	-4.8	3.3
1987 (M)	2.7	2.7	8.9	4.9	0.4	3.7	1.7	-1.0	4.5
1988 (M)	3.2	1	0.3	3.6	0.6	1	1.4	2.4	4.6
1985 II	5.5	3.0	-1.0	6.3	0.8	3.0	4.4	14.0	0.7
III	3.4	2.5	3.4	9.7	0.8	6.7	4.3	-12.2	-8.8
IV	4.7	2.1	3.9	9.0	0.9	5.1	4.2	-7.4	-8.1
1986 I	-1.7	1.6	3.4	2.0	0.6	0.5	3.7	-13.1	-1.6
II	3.7	4.9	1.6	6.4	1.3	8.0	2.4	6.4	16.5
III	3.0	5.2	4.9	7.4	0.9	4.2	2.3	-3.0	3.6
IV	2.9	-2.9	57.1	9.3	-0.2	2.4	2.5	-3.9	-8.6
1987 I	5.2	7.4	-43.8	7.4	0.2	3.1	3.0	5.8	-2.6
II	0.0	2.6	3.4	7.8	0.2	6.7	1.8	-6.4	23.8
DEUTSCHLAND									
1985	2.6	1.9	1.7	-0.3	0.4	1.5	4.6	7.8	4.6
1986 (M)	2.5	3.9	3.3	3.2	0.4	3.6	3.5	-0.8	2.7
1987 (M)	1.5	3.2	2.3	2.6	0.4	2.9	2.2	-1.0	3.9
1988 (M)	2.0	2.9	2.1	3.1	0.4	2.8	1.4	1.0	3.8
1985 II	3.7	4.5	3.6	12.1	-	0.5	5.7	7.1	-2.4
III	8.0	7.4	6.1	9.7	-	8.4	5.6	5.8	6.9
IV	-1.8	0.3	3.5	4.0	-	2.4	4.6	-11.5	0.3
1986 I	-2.8	0.3	-4.5	-17.3	-	-4.0	4.9	-4.8	-11.3
II	10.4	13.4	6.6	26.4	-	14.7	3.9	21.4	17.4
III	-3.2	0.3	7.0	-4.8	-	1.5	4.5	-5.7	16.4
IV	-1.1	0.2	-5.4	9.3	-	3.7	3.1	-3.7	13.8
1987 I	-3.0	-1.7	2.0	-24.9	-	-2.4	3.0	-8.2	-6.8
II	4.1	12.2	1.0	20.5	-	4.1	3.8	9.9	10.5
FRANCE									
1985	1.1	2.3	1.4	3.4	0.2	1.9	-1.7	1.7	5.0
1986 (M)	2.4	2.9	1.9	3.7	1.4	4.1	-3.3	0.5	6.9
1987 (M)	1.5	1.8	2.1	4.0	1.1	2.0	-3.8	2.6	4.2
1988 (M)	2.4	1.9	1.0	4.8	1.1	2.4	-3.8	4.5	4.3
1985 II	3.5	-1.2	3.0	5.2	-0.2	2.8	0.7	7.2	2.2
III	4.2	5.5	3.3	10.3	0.7	9.8	-0.4	-5.5	14.6
IV	-0.1	3.3	3.5	-4.7	0.2	-0.5	-0.5	4.4	4.9
1986 I	0.5	3.8	1.3	3.2	-0.9	-0.9	-0.4	-6.8	-7.9
II	4.5	3.4	3.7	8.5	1.5	14.1	-2.1	1.9	32.3
III	1.8	3.9	2.6	-0.8	1.6	3.1	-2.4	4.2	9.0
IV	1.2	-0.3	1.3	0.0	1.0	-2.3	-1.7	-6.6	-17.7
1987 I	0.4	2.5	2.6	1.6	1.7	5.0	-2.6	-2.8	14.1
II	2.9	-0.8	1.3	7.5	2.5	4.5	-2.8	0.9	4.3
ITALIA									
1985	2.7	2.9	3.4	3.3	2.2	3.2	-0.7	3.7	5.4
1986 (M)	2.7	3.9	2.8	1.2	2.6	3.6	-1.6	1.4	4.9
1987 (M)	3.2	4.2	2.9	4.4	3.0	4.4	-2.7	2.3	7.0
1988 (M)	2.8	3.9	2.8	3.1	2.7	3.2	-3.3	4.1	6.0
1985 II	2.3	4.0	2.3	0.7	2.3	3.7	-2.5	-5.7	1.1
III	4.0	4.4	3.9	-2.4	2.0	1.7	-1.9	5.5	-4.5
IV	3.1	2.5	3.4	2.9	2.2	3.3	-2.0	18.8	18.6
1986 I	-1.1	2.6	2.3	-1.2	2.7	3.8	-3.2	-12.5	8.2
II	7.9	0.2	3.1	7.3	1.8	-1.2	-1.3	22.5	-10.5
III	1.8	6.0	2.0	0.3	3.1	9.4	-2.8	1.0	26.6
IV	0.9	4.6	3.7	-2.9	3.0	2.3	-3.2	-28.1	-19.6
1987 I	0.4	5.9	1.7	1.8	2.9	3.9	-4.1	4.0	18.3
II	5.6	4.1	3.5	8.5	3.4	7.0	-4.4	5.2	10.8
UNITED KINGDOM									
1985	3.7	3.5	0.4	1.8	0.2	2.8	1.2	6.1	2.9
1986 (M)	2.4	4.7	1.2	0.6	0.2	3.2	0.4	5.0	5.8
1987 (M)	3.1	3.8	1.5	3.8	0.4	3.5	0.0	5.3	6.7
1988 (M)	2.6	3.2	1.0	3.4	0.4	2.8	-0.2	3.9	4.7
1985 II	2.0	0.8	1.5	-31.5	0.9	-0.9	1.5	5.6	-4.7
III	0.2	8.9	-3.6	8.3	0.3	3.6	0.6	-10.6	0.7
IV	-1.0	2.9	2.6	-6.4	-0.1	-0.4	0.5	8.5	11.1
1986 I	9.6	7.5	2.3	7.7	0.6	9.4	0.5	-6.3	-7.2
II	0.5	6.6	0.2	-7.8	0.0	0.1	0.6	12.4	11.2
III	-0.1	5.6	0.7	16.4	-0.2	5.6	-0.8	3.4	23.4
IV	7.1	2.1	0.7	2.3	0.6	5.3	-0.3	21.7	15.2
1987 I	4.3	2.8	-3.7	1.1	-0.2	-2.7	1.4	-2.1	-25.0
II	-1.0	6.9	2.9	4.7	-0.2	5.9	-0.3	-5.6	18.5

2 CHANGE COMPARED WITH PREVIOUS PERIOD (FOR QUARTERS, SEAS. ADJUSTED, AT ANNUAL RATES)
(1) PERCENT OF GDP
(*) FORECASTS

BIP - PREISINDEX

GDP - PRICE INDEX

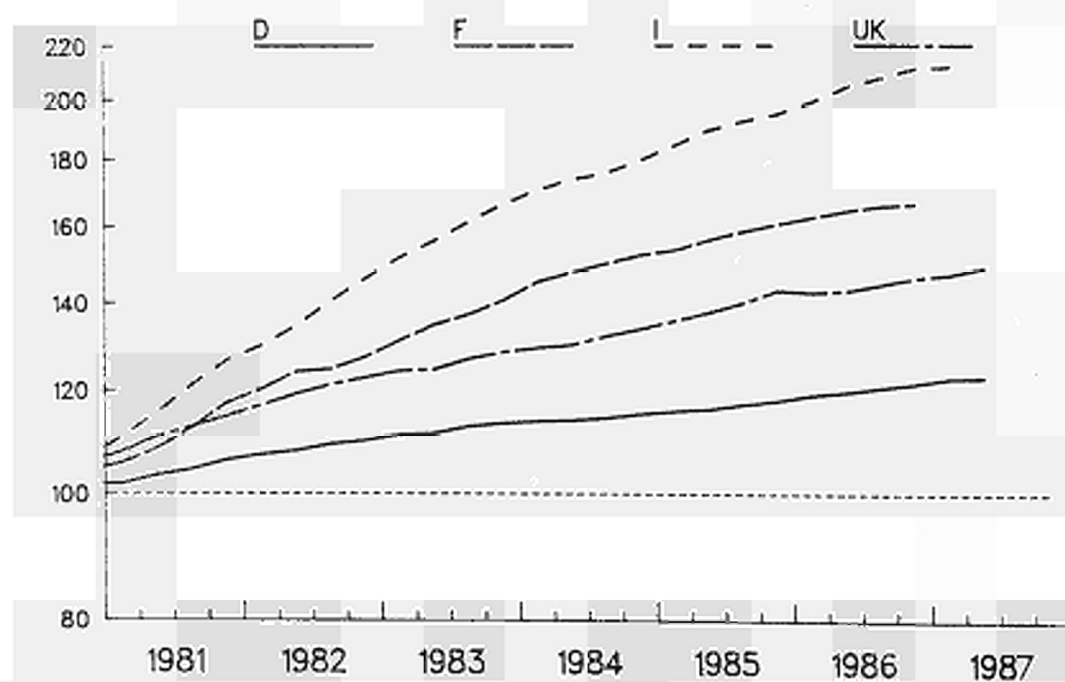
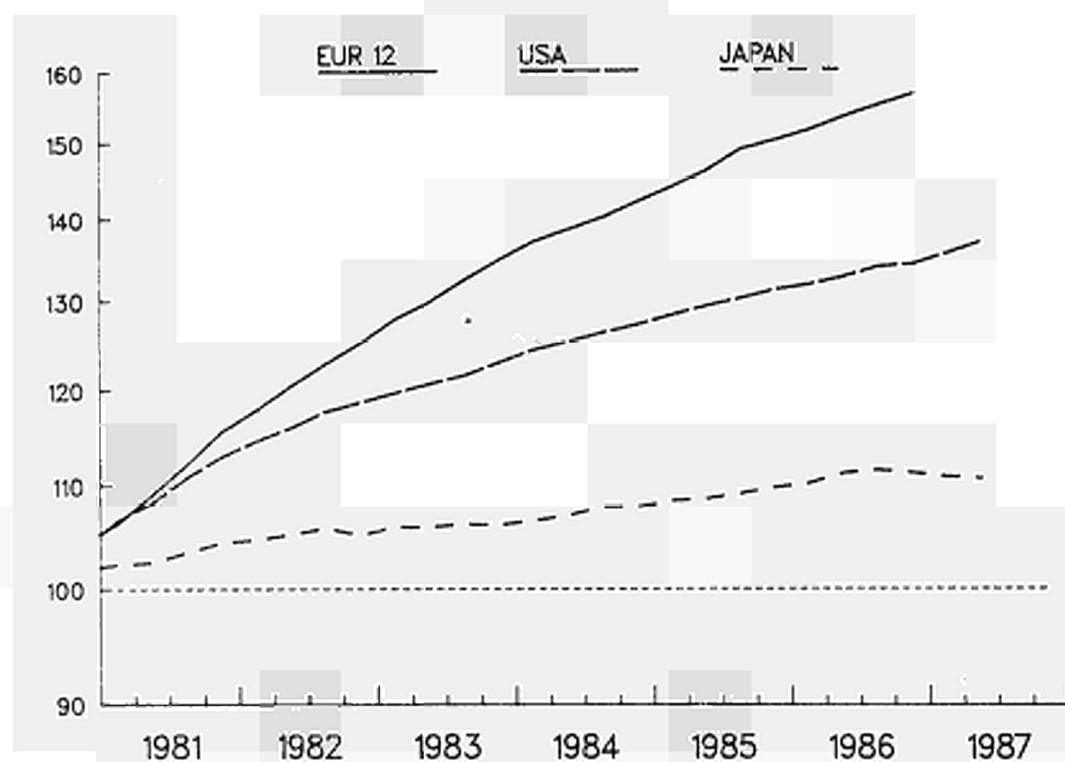
INDICE DES PRIX DU PIB

TENDENZ

TREND

TENDANCE

1980 = 100



EINFACH-LOGARITHMISCHE SKALA

SEMI-LOGARITHMIC SCALE

ECHELLE SEMI-LOGARITHMIQUE

CHANGE IN PRICE OF GDP AND ITS COMPONENTS
%

	GDP	PRIVATE CONSUMPTION	GOVERNMENT CONSUMPTION	GROSS FIXED CAP. FORMAT	DOMESTIC DEMAND	EXPORTS	IMPORTS
EUR 12							
1985	6.1	5.9	5.7	5.1	5.6	5.2	3.6
1986 (*)	5.6	3.6	5.3	3.6	3.7	-4.6	-10.9
1987 (*)	4.1	3.5	4.7	3.8	3.8	0.1	-1.0
1988 (*)	3.6	3.3	3.9	3.5	3.6	2.6	2.9
1985 II	5.5	5.6	5.6	5.3	5.5	4.6	6.8
III	5.7	5.2	5.3	4.7	5.0	4.3	1.8
IV	5.7	4.8	4.9	4.5	4.4	1.7	-2.3
1986 I	5.5	3.7	4.9	3.7	3.6	-2.3	-7.8
II	5.0	2.8	3.2	3.6	2.7	-5.0	-12.3
III	4.6	2.5	4.2	2.8	2.2	-5.0	-12.8
IV	4.2	2.1	4.6	2.8	2.2	-3.4	-9.9
1987 I	:	:	:	:	:	:	:
II	:	:	:	:	:	:	:
UNITED STATES							
1985	3.1	3.4	3.7	1.0	2.9	-2.7	-2.5
1986 (*)	2.6	2.1	:	:	:	:	:
1987 (*)	2.8	3.5	:	:	:	:	:
1988 (*)	3.9	:	:	:	:	:	:
1985 II	3.2	3.5	3.9	-0.2	3.5	-2.1	-3.0
III	3.1	3.3	3.4	0.0	3.7	-2.1	-2.6
IV	3.2	3.7	3.1	0.1	3.6	-1.8	-1.0
1986 I	2.7	3.1	3.0	0.2	2.4	-1.2	-0.4
II	2.6	2.0	2.6	2.0	2.0	-1.3	-3.7
III	2.8	2.1	2.9	2.6	2.0	-1.8	-4.7
IV	2.2	1.7	1.0	2.7	2.0	-1.9	-2.8
1987 I	2.8	2.9	2.8	2.9	2.8	-0.7	1.1
II	3.1	4.2	3.7	1.9	4.1	0.1	4.9
JAPAN							
1985	1.5	2.1	2.4	-0.2	1.5	-1.4	-3.2
1986 (*)	1.9	0.8	-4.8	0.8	:	:	:
1987 (*)	0.8	0.0	:	:	:	:	:
1988 (*)	0.9	:	:	:	:	:	:
1985 II	1.5	2.3	2.5	0.1	1.6	1.6	1.4
III	1.2	2.0	2.3	-0.5	1.3	-2.1	-3.3
IV	1.7	1.9	2.2	-0.8	1.4	-6.6	-11.6
1986 I	1.5	1.3	2.9	-1.0	0.7	-11.0	-19.6
II	2.3	0.9	2.7	-1.7	-0.4	-13.8	-34.2
III	2.1	0.4	2.1	-2.4	-0.6	-16.1	-37.6
IV	1.3	-0.1	-7.5	-2.5	-1.3	-8.6	-29.7
1987 I	0.6	-0.5	-0.3	-2.7	-1.2	-6.4	-21.2
II	-0.5	:	:	:	:	:	:
DEUTSCHLAND							
1985	2.2	2.1	2.2	1.6	2.1	2.7	2.1
1986 (*)	3.1	-0.7	2.2	1.3	0.2	-1.6	-11.8
1987 (*)	2.0	1.9	2.2	2.0	1.7	-2.4	-4.3
1988 (*)	2.1	2.0	2.2	2.5	2.2	1.0	1.5
1985 II	2.1	2.4	2.5	1.6	2.4	3.5	4.7
III	2.4	2.0	2.4	1.2	2.0	2.9	1.8
IV	2.5	1.5	1.2	1.2	1.6	1.3	-2.2
1986 I	2.9	0.3	1.7	0.9	0.9	0.0	-5.4
II	3.2	-0.9	2.8	1.5	0.0	-1.7	-11.8
III	3.1	-0.5	2.3	1.4	-0.1	-2.1	-12.8
IV	3.1	-0.8	1.7	1.3	0.1	-2.0	-11.8
1987 I	3.1	-0.5	1.0	1.3	0.5	-1.9	-11.8
II	2.6	0.8	3.2	1.1	1.8	-1.4	-4.8
FRANCE							
1985	5.9	5.5	4.8	2.9	4.9	4.2	0.6
1986 (*)	4.6	2.7	3.8	1.4	2.2	-4.7	-13.7
1987 (*)	3.3	2.7	3.0	3.0	3.1	-1.2	-1.5
1988 (*)	2.4	2.3	2.8	2.6	2.4	1.6	2.0
1985 II	5.8	6.2	3.7	4.8	5.3	6.4	5.0
III	5.8	5.5	4.7	4.5	4.0	3.7	0.0
IV	5.6	4.7	4.2	4.0	4.7	0.9	-3.6
1986 I	5.8	3.4	5.3	2.6	3.8	-2.2	-10.4
II	5.3	2.6	3.3	2.9	2.4	-3.7	-14.4
III	4.4	2.1	2.4	1.4	:	-4.0	-13.8
IV	3.6	2.1	1.9	3.0	:	-2.8	-10.2
1987 I	:	:	:	:	:	:	:
II	:	:	:	:	:	:	:
ITALIA							
1985	8.8	9.3	8.7	7.9	8.5	7.8	6.7
1986 (*)	8.0	6.1	6.5	4.3	4.9	-3.4	-15.7
1987 (*)	6.0	4.3	7.5	4.0	5.0	0.4	-3.5
1988 (*)	4.2	3.7	3.7	3.1	4.3	3.0	4.4
1985 II	9.0	9.7	9.2	8.7	8.3	10.0	10.7
III	9.5	9.1	9.6	8.1	6.7	8.5	6.2
IV	8.5	8.9	6.3	7.2	7.7	5.6	1.6
1986 I	7.9	7.8	5.6	5.9	:	-0.9	-7.8
II	7.9	6.8	7.6	4.6	:	-5.0	-16.9
III	7.9	5.8	6.0	3.7	:	-7.1	-21.8
IV	8.3	5.8	7.6	3.1	:	-4.6	-18.6
1987 I	6.3	3.6	4.8	2.2	:	-2.2	-12.0
II	:	:	:	:	:	:	:
UNITED KINGDOM							
1985	5.8	5.2	5.4	6.2	5.4	4.9	3.5
1986 (*)	3.7	3.7	6.5	5.9	4.8	-7.1	-3.6
1987 (*)	4.5	3.9	5.6	5.8	4.5	4.0	3.9
1988 (*)	4.8	4.2	5.5	5.4	4.6	4.0	3.4
1985 II	5.8	5.2	7.0	7.3	5.7	8.0	7.8
III	6.1	5.2	5.0	6.9	5.0	3.1	-0.5
IV	7.0	5.2	4.8	6.8	5.5	-0.3	-5.2
1986 I	5.1	4.5	5.4	6.4	4.7	-6.1	-7.1
II	3.8	3.6	6.8	6.3	5.4	-9.8	-6.4
III	3.2	3.5	6.0	5.9	5.6	-7.5	-2.4
IV	2.1	2.9	7.0	4.6	2.6	-4.7	2.3
1987 I	3.2	2.4	5.4	4.1	4.0	-1.5	1.1
II	4.2	2.4	5.6	4.5	3.1	4.8	2.8

PIB

zu Marktpreisen

GDP

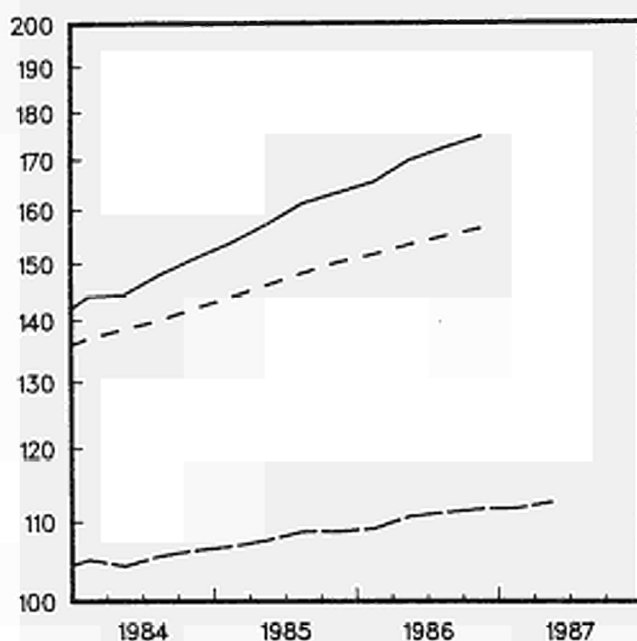
at market prices

1980 = 100

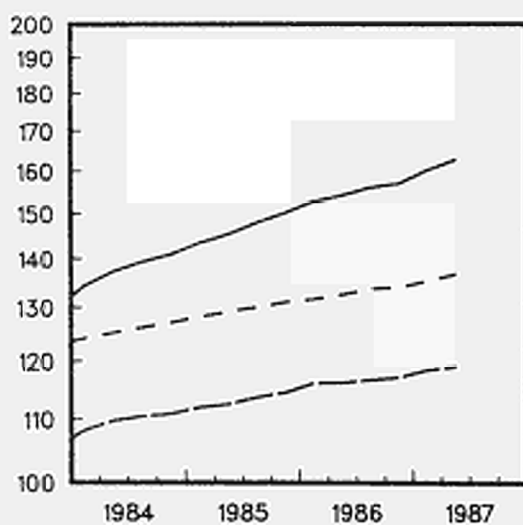
PIB

aux prix du marché

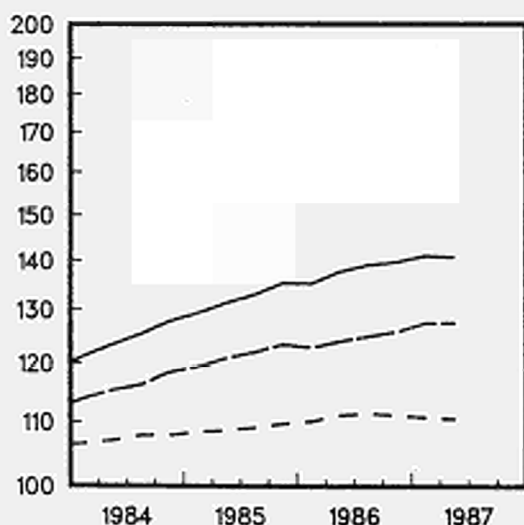
EUR 12



USA



JAPAN



- in jew. Preisen (sais. ber.), At current prices (seas. adj.), Aux prix courants (cvs)
- - - in Preisen von 1980 (sais. ber.), At 1980 prices (seas. adj.), Aux prix de 1980 (cvs)
- . - implizierter Preisindex (sais. ber.), Implied deflator (seas. adj.), Ind. implicite des prix (cvs)

EINFACH-LOGARITHMISCHE SKALA

SEMI-LOGARITHMIC SCALE

ECHELLE SEMI-LOGARITHMIQUE

GROSS DOMESTIC PRODUCT BY KIND OF ACTIVITY

VOLUME

	EUR-12	B	DK	D	GR	E	F	IRL	I	L	HL	P	UK	USA	JAP
AGRICULTURE, FORESTRY, FISHING															
EUR12 = 100															
1980	100.0	2.1	2.5	13.2	8.3	0.2	23.0	2.1	29.9	0.1	5.2	5.0	8.6	84.3	41.0
1980 = 100															
1982	:	110.1	119.1	119.6	100.7	89.2	109.0	99.0	97.4	121.1	122.2	:	111.2	118.4	101.9
1983	:	108.8	108.9	108.0	91.8	94.8	103.5	97.6	106.0	109.5	126.2	:	106.1	97.4	103.1
1984	:	118.2	133.1	117.1	98.2	104.9	112.4	:	102.4	:	133.5	:	123.3	113.4	105.3
1985	:	119.3	127.2	113.1	99.4	106.3	111.9	:	100.0	:	130.2	:	117.1	125.4	106.2
1986 (*)	:	:	:	:	:	:	:	:	:	:	:	:	118.5	:	:
%															
1983	II	-11.7	-	-	-32.9	-	-15.7	-	-3.7	-	-	-	-11.4	-	-
	III	-1.8	-	-	44.4	-	-15.9	-	16.3	-	-	-	7.8	-	-
	IV	22.9	-	-	-53.3	-	9.4	-	-5.4	-	-	-	23.1	-	-
1984	I	-9.0	-	-	28.2	-	15.2	-	-20.9	-	-	-	32.7	-	-
	II	12.6	-	-	-28.4	-	20.2	-	14.7	-	-	-	26.9	-	-
	III	4.3	-	-	33.5	-	16.5	-	-10.6	-	-	-	3.1	-	-
	IV	-12.7	-	-	-12.0	-	3.7	-	-6.9	-	-	-	-12.5	-	-
1985	I	-13.2	-	-	-0.3	-	-15.5	-	-7.1	-	-	-	-12.9	-	-
	II	9.6	-	-	-22.9	-	-5.0	-	14.0	-	-	-	-6.7	-	-
	III	15.2	-	-	19.5	-	3.4	-	10.6	-	-	-	0.0	-	-
	IV	-18.4	-	-	51.5	-	-0.5	-	-0.4	-	-	-	0.0	-	-
1986	I	-11.9	-	-	-29.4	-	3.5	-	-21.5	-	-	-	3.4	-	-
	II	30.4	-	-	19.0	-	-9.6	-	29.7	-	-	-	-3.4	-	-
	III	:	-	-	-11.3	-	:	-	1.2	-	-	-	-16.9	-	-
	IV	:	-	-	68.1	-	:	-	-7.1	-	-	-	17.7	-	-
1987	I	:	-	-	-53.9	-	:	-	:	-	-	-	-3.4	-	-
	II	:	-	-	:	-	:	-	:	-	-	-	:	-	-
INDUSTRY AND CONSTRUCTION															
EUR12 = 100															
1980	100.0	3.2	1.3	26.3	1.4	0.1	19.6	0.7	19.4	0.2	4.7	1.8	21.3	104.6	45.2
1980 = 100															
1982	:	99.4	95.7	95.9	94.7	99.3	99.3	73.6	97.3	94.4	92.1	:	97.6	96.4	107.7
1983	:	100.7	100.1	97.4	94.9	100.7	100.3	66.1	95.1	:	94.3	:	101.2	101.6	112.0
1984	:	102.7	103.5	99.3	95.4	100.1	100.5	:	97.8	:	96.9	:	102.7	111.2	121.3
1985	:	103.1	108.8	102.5	99.0	102.1	100.6	:	98.9	:	99.8	:	107.2	114.8	129.7
1986 (*)	:	:	:	:	:	:	:	:	:	:	:	:	108.9	:	:
%															
1983	II	0.1	-	8.3	-5.9	-	2.4	-	-1.6	-	-	-	-0.4	-	-
	III	5.0	-	9.5	9.6	-	-2.7	-	0.1	-	-	-	11.3	-	-
	IV	4.8	-	8.4	6.2	-	1.6	-	3.6	-	-	-	3.9	-	-
1984	I	4.1	-	4.8	-0.5	-	4.3	-	8.9	-	-	-	0.8	-	-
	II	-9.2	-	-22.2	-1.6	-	-6.0	-	0.4	-	-	-	-4.6	-	-
	III	8.4	-	18.2	-3.8	-	6.4	-	8.6	-	-	-	0.0	-	-
	IV	1.7	-	-8.8	-6.1	-	-2.6	-	-8.0	-	-	-	3.1	-	-
1985	I	0.7	-	4.2	11.0	-	-1.9	-	2.4	-	-	-	10.5	-	-
	II	5.2	-	6.8	1.8	-	4.3	-	4.0	-	-	-	8.7	-	-
	III	3.3	-	4.2	3.8	-	5.7	-	-1.0	-	-	-	-4.1	-	-
	IV	1.5	-	0.0	6.9	-	2.5	-	2.1	-	-	-	1.5	-	-
1986	I	-3.8	-	-9.5	-5.3	-	-4.8	-	-0.3	-	-	-	1.5	-	-
	II	10.2	-	17.2	6.3	-	5.8	-	12.0	-	-	-	4.1	-	-
	III	:	-	-0.5	-6.8	-	:	-	-1.4	-	-	-	4.0	-	-
	IV	:	-	-2.0	-8.0	-	:	-	3.7	-	-	-	1.5	-	-
1987	I	:	-	-9.2	10.2	-	:	-	:	-	-	-	6.2	-	-
	II	:	-	:	:	-	:	-	:	-	-	-	8.4	-	-
SERVICES															
EUR12 = 100															
1980	100.0	3.9	2.1	24.4	1.7	0.1	21.5	0.7	17.1	0.2	4.1	1.8	20.3	145.2	43.8
1980 = 100															
1982	100.7	102.3	103.6	102.4	103.7	103.7	103.7	103.5	102.2	103.1	100.9	:	102.8	102.7	106.4
1983	102.3	101.6	105.8	104.5	104.8	105.6	105.0	104.0	102.9	102.5	101.7	:	105.0	107.1	111.1
1984	:	103.5	108.6	107.9	109.9	108.2	107.3	:	106.3	:	103.6	:	109.2	112.7	115.4
1985	:	104.8	113.2	111.2	113.6	110.7	109.1	:	110.2	:	105.3	:	113.2	116.3	120.2
1986 (*)	:	:	:	:	:	:	:	:	:	:	:	:	117.0	:	:
%															
1983	II	2.5	-	0.5	2.7	-	3.8	-	3.7	-	-	-	2.3	-	-
	III	3.6	-	3.3	10.2	-	1.1	-	5.5	-	-	-	5.0	-	-
	IV	6.2	-	12.2	1.3	-	2.9	-	4.5	-	-	-	4.2	-	-
1984	I	2.2	-	-1.5	-2.9	-	3.0	-	5.5	-	-	-	3.4	-	-
	II	0.7	-	-1.3	3.9	-	-0.5	-	1.9	-	-	-	3.3	-	-
	III	4.5	-	6.2	9.5	-	1.6	-	5.2	-	-	-	4.8	-	-
	IV	4.8	-	8.8	2.1	-	1.7	-	3.7	-	-	-	4.4	-	-
1985	I	1.8	-	-1.9	-2.0	-	1.2	-	5.6	-	-	-	4.8	-	-
	II	2.8	-	0.8	6.2	-	3.9	-	3.8	-	-	-	3.2	-	-
	III	3.2	-	5.7	4.4	-	1.7	-	2.2	-	-	-	2.5	-	-
	IV	3.9	-	5.0	4.1	-	2.8	-	4.4	-	-	-	3.2	-	-
1986	I	0.6	-	-1.3	-3.6	-	0.9	-	1.2	-	-	-	2.4	-	-
	II	5.3	-	5.4	3.2	-	3.9	-	6.7	-	-	-	5.6	-	-
	III	:	-	2.3	-0.5	-	:	-	1.4	-	-	-	5.8	-	-
	IV	:	-	5.3	4.5	-	:	-	-2.0	-	-	-	5.7	-	-
1987	I	:	-	-2.8	-5.1	-	:	-	:	-	-	-	2.5	-	-
	II	:	-	:	:	-	:	-	:	-	-	-	6.3	-	-

% CHANGE COMPARED WITH PREVIOUS QUARTER, SEAS. ADJUSTED, AT ANNUAL RATES
 (*) PROVISIONAL DATA

EXPLANATORY NOTES

This publication shows annual and quarterly growth rates for the main aggregates of national accounts, by volume and by price, for the following Member States and major trading partners : Germany, France, Italy, United Kingdom, EUR 12, the United States and Japan.

Source of data

The annual data are extracted from the ESA aggregates obtained by Eurostat from the national statistical offices by means of a harmonized questionnaire sent once a year. The data marked with an asterisk (*) are estimates based on DG II's economic budget forecasts and are updated twice a year, in May and October.

The seasonally adjusted quarterly data are taken from national sources. They follow the general concept, definitions and method of seasonal adjustment used in their country of origin. Consequently, the aggregates of different countries are not fully comparable.

In view of the particular features of national systems two sources are sometimes needed to cover all the aggregates in this bulletin.

DEUTSCHLAND	: Statistisches Bundesamt, Bundesbank
FRANCE	: INSEE
ITALIA	: ISTAT
UNITED KINGDOM	: CSO
USA	: Department of Commerce (BEA)
JAPAN	: Bureau of Economic Planning

The Community total (EUR 12) for each quarterly aggregate is derived from the sum of the data for the four large countries (D, F, I, UK), converted to a common currency using PPSs. These four countries account for approximately 80 % of the GDP of the Community of Twelve.

It should be noted that the growth rates of the aggregates at constant prices are shown as annual rates. However, the figures are based on the data for one quarter, so that the result may be very different from the underlying annual trend and should therefore be interpreted with caution.

Publications and storage of the data

The annual data from the national questionnaires are published in the "Aggregates" bulletin in the series "National accounts ESA". They are also available, via the network and from host companies, in Eurostat's CRONOS-SEF SEC1 data bank. The quarterly data are also available in CRONOS-SEF ICG.

For all information on annual and quarterly aggregates, contact Eurostat in Luxembourg, tel. 4301-3521

For all information on access to the CRONOS data bank, contact Eurostat in Luxembourg, tel. 4301-3220.

Requests for a subscription to this bulletin should be sent to the **Office for Official Publications of the European Communities, L-2985 Luxembourg.**

Venta y suscripciones · Salg og abonnement · Verkauf und Abonnement · Πωλήσεις και συνδρομές
Sales and subscriptions · Vente et abonnements · Vendita e abbonamenti
Verkoop en abonnementen · Venda e assinaturas

BELGIQUE/BELGIË

Moniteur belge/Belgisch Staatsblad
Rue de Louvain 40-42/Leuvensestraat 40-42
1000 Bruxelles/1000 Brussel
Tél. 5 12 00 26
CCP/Postrekening 000-2005502-27

Sous-dépôts/Agentschappen:

Librairie européenne/
Europese Boekhandel
Rue de la Loi 244/Wetstraat 244
1040 Bruxelles/1040 Brussel

CREDOC

Rue de la Montagne 34/Bergstraat 34
Bte 11/Bus 11
1000 Bruxelles/1000 Brussel

DANMARK

Schultz EF-publikationer

Montergade 19
1116 København K
Tlf: (01) 14 11 95
Telecopier: (01) 32 75 11

BR DEUTSCHLAND

Bundesanzeiger Verlag

Breite Straße
Postfach 10 80 06
5000 Köln 1
Tel. (02 21) 20 29-0
Fernschreiber: ANZEIGER BONN 8 882 595
Telecopierer: 20 29 278

GREECE

G.C. Eleftheroudakis SA

International Bookstore
4 Nikis Street
105 63 Athens
Tel. 322 22 55
Telex 219410 ELEF

Sub-agent for Northern Greece:

Molho's Bookstore

The Business Bookshop
10 Tsimiski Street
Thessaloniki
Tel. 275 271
Telex 412885 LIMO

ESPAÑA

Boletín Oficial del Estado

Trafalgar 27
28010 Madrid
Tel. (91) 446 60 00

Mundi-Prensa Libros, S.A.

Castelló 37
28001 Madrid
Tel. (91) 431 33 99 (Libros)
431 32 22 (Suscripciones)
435 36 37 (Dirección)
Télex 49370-MPLI-E

FRANCE

Journal officiel
Service des publications
des Communautés européennes

26, rue Desaix
75727 Paris Cedex 15
Tél. (1) 45 78 61 39

IRELAND

Government Publications Sales Office

Sun Alliance House
Molesworth Street
Dublin 2
Tel. 71 03 09

or by post

Government Stationery Office
Publications Section

6th floor
Bishop Street
Dublin 8
Tel. 78 16 66

ITALIA

Licosa Spa

Via Lamarmora, 45
Casella postale 552
50 121 Firenze
Tel. 57 97 51
Telex 570466 LICOSA I
CCP 343 509

Subagenti:

Libreria scientifica Lucio de Biasio - AEIYOU

Via Meravigli, 16
20 123 Milano
Tel. 80 76 79

Libreria Tassi

Via A. Farnese, 28
00 192 Roma
Tel. 31 05 90

Libreria giuridica

Via 12 Ottobre, 172/R
16 121 Genova
Tel. 59 56 93

GRAND-DUCHÉ DE LUXEMBOURG
et autres pays/and other countries

Office des publications officielles
des Communautés européennes

2, rue Mercier
L-2985 Luxembourg
Tél. 49 92 81
Télex PUBOF LU 1324 b
CCP 19190-81
CC bancaire BIL 8-109/6003/200

Abonnements/Subscriptions

Messageries Paul Kraus

11, rue Christophe Plantin
L-2339 Luxembourg
Tél. 49 98 888
Télex 2515
CCP 49242-63

NEDERLAND

Staatsdrukkerij- en uitgeverijbedrijf

Christoffel Plantijnstraat
Postbus 20014
2500 EA 's-Gravenhage
Tel. (070) 78 98 80 (bestellingen)

PORTUGAL

Imprensa Nacional
Casa da Moeda, E. P.

Rua D. Francisco Manuel de Melo, 5
1092 Lisboa Codex
Tel. 69 34 14
Telex 15328 INCM

Distribuidora Livros Bertrand Lda.

Grupo Bertrand, SARL

Rua das Terras dos Vales, 4-A
Apart. 37
2700 Amadora CODEX
Tel. 493 90 50 - 494 87 88
Telex 15798 BERDIS

UNITED KINGDOM

HM Stationery Office

HMSO Publications Centre
51 Nine Elms Lane
London SW8 5DR
Tel. (01) 211 56 56

Sub-agent:

Alan Armstrong & Associates Ltd

72 Park Road
London NW1 4SH
Tel. (01) 723 39 02
Telex 297635 AAALTD G

UNITED STATES OF AMERICA

European Community Information
Service

2100 M Street, NW
Suite 707
Washington, DC 20037
Tel. (202) 862 9500

CANADA

Renouf Publishing Co., Ltd

61 Sparks Street
Ottawa
Ontario K1P 5R1
Tel. Toll Free 1 (800) 267 4164
Ottawa Region (613) 238 8985-6
Telex 053-4936

JAPAN

Kinokuniya Company Ltd

17-7 Shinjuku 3-Chome
Shinjuku-ku
Tokyo 160-91
Tel. (03) 354 0131

Journal Department

PO Box 55 Chitose
Tokyo 156
Tel. (03) 439 0124

Price (excluding VAT) in Luxembourg

	ECU	BFR	IRL	UKL	USD
Single copy	2,50	110	2	1.80	2.50
Subscription	9,30	400	7	6.60	10



OFICINA DE PUBLICACIONES OFICIALES DE LAS COMUNIDADES EUROPEAS
 KONTORET FOR DE EUROPÆISKE FÆLLESSKABERS OFFICIELLE PUBLIKATIONER
 AMT FÜR AMTLICHE VERÖFFENTLICHUNGEN DER EUROPAISCHEN GEMEINSCHAFTEN
 ΥΠΗΡΕΣΙΑ ΕΠΙΣΗΜΩΝ ΕΚΔΟΣΕΩΝ ΤΩΝ ΕΥΡΩΠΑΙΚΩΝ ΚΟΙΝΟΤΗΤΩΝ
 OFFICE FOR OFFICIAL PUBLICATIONS OF THE EUROPEAN COMMUNITIES
 OFFICE DES PUBLICATIONS OFFICIELLES DES COMMUNAUTÉS EUROPÉENNES
 UFFICIO DELLE PUBBLICAZIONI UFFICIALI DELLE COMUNITA EUROPEE
 BUREAU VOOR OFFICIELE PUBLIKATIES DER EUROPESE GEMEENSCHAPPEN
 SERVIÇO DAS PUBLICAÇÕES OFICIAIS DAS COMUNIDADES EUROPEIAS

ISSN 1010-1764