

# Quarterly national accounts – ESA

2 □ 1990 Quarterly

*Fourth quarter of 1989: GDP +0.7%, inflation +1.2%: economic growth up slightly*

*After two quarters of relative stagnation, the fourth quarter of 1989 once again saw fairly sustained growth (+0.7%) in the Community economy. Despite this, growth in 1989 was slightly below that of 1988, thus confirming the forecasts for the year. On the other hand, there was another increase in inflation (+1.2%) as measured by the implicit deflators of GDP. However, against a background of restrictive economic policy in most of the Member States this increase in inflation would seem to be fairly transitory, since it was caused by very specific factors such as the marked increase in the deflator of non-market GDP recorded in France.*

*With regard to uses, after two quarters of decline, there was a considerable increase in investments (+1.1%) during the fourth quarter of 1989, which is all the more positive since interest rates are fairly high. Furthermore, there was a noticeable rise in private consumption (+0.9%), while public consumption was slightly down (-0.1%).*

*As regards the figures for the individual Member States, for international trade in goods and services there was a considerable increase in imports to France and the Federal Republic of Germany (+5.3% and +4.8% respectively), while in the United Kingdom they decreased (-1.7%) and in Italy the increase was only slight (+0.2%). On the other hand, exports were up in almost all Member States, particularly in France and the United Kingdom (+4.9% and +3.8% respectively). The one exception was Germany, where the figure fell for the second quarter in a row (-0.2%). On the supply side, there was a considerable upsurge in GDP in Germany (+1.0%) and a slight slow-down (+0.4%) in Italy.*

*Among the components of domestic demand, there was a noticeable increase in investments in Germany (+3.4%), with slower growth in France and Italy (+0.7% and +0.4% respectively) and a fall in the United Kingdom (-0.5%) for the first time since the beginning of 1987. On the other hand, there was a marked increase in private consumption in Germany and the United Kingdom (+1.0% and +1.3%), while the rate of growth slowed in France (+0.5%). As regards inflation, there was a slight reduction in Germany (+0.4%) and a marked increase in the United Kingdom (+1.6%). In Italy the high inflation rate remained unchanged (+1.1%).*

*In the United States the fourth quarter saw a marked slow-down in economic growth (+0.3%) with inflation unchanged (+0.8%). Among the components of GDP, it is worth mentioning the fall in investments (-1.1%) and the increase in public consumption (+0.6%).*

*In Japan the fourth quarter was a period of stabilization, with a noticeable slow-down in GDP growth (+0.7%) and a marked increase in inflation (+0.9%) to the highest rate since the first quarter of 1983. Among the components of GDP, investments and private consumption grew at a slightly slower rate, although this growth remained very strong (+3.0% and 1.6% respectively).*



OFICINA ESTADÍSTICA DE LAS COMUNIDADES EUROPEAS  
DE EUROPÆISKE FÆLLESSKABERS STATISTISKE KONTOR  
STATISTISCHES AMT DER EUROPÄISCHEN GEMEINSCHAFTEN  
ΣΤΑΤΙΣΤΙΚΗ ΥΠΗΡΕΣΙΑ ΤΩΝ ΕΥΡΩΠΑΪΚΩΝ ΚΟΙΝΟΤΗΤΩΝ  
STATISTICAL OFFICE OF THE EUROPEAN COMMUNITIES  
OFFICE STATISTIQUE DES COMMUNAUTÉS EUROPÉENNES  
ISTITUTO STATISTICO DELLE COMUNITÀ EUROPEE  
BUREAU VOOR DE STATISTIEK DER EUROPESE GEMEENSCHAPPEN  
SERVIÇO DE ESTATÍSTICA DAS COMUNIDADES EUROPEIAS

L-2920 Luxembourg – Tél. 43011 – Télex : Comeur Lu 3423  
B-1049 Bruxelles, bâtiment Berlaymont, rue de la Loi 200 (bureau de liaison) – Tél. 235 1111

## EXPLANATORY NOTES

This publication shows quarterly and, for comparison, annual growth rates for the main aggregates of national accounts, in volume and price terms, for some Member States (Federal Republic of Germany, France, Italy, United Kingdom) and major trading partners of the Community (United States and Japan).

To facilitate analysis of short-term trends, movements in the aggregates showed in the tables of this bulletin are expressed in growth rates compared with the previous period.

### Source of data

*The annual data* are extracted from the aggregates figures obtained by Eurostat from the National Statistical Offices of the Member States, the United States and Japan by means of a harmonized questionnaire (ESA) in November of each year. The data marked with an asterisk (\*) are forecasts published by the Commission (DG II) three times a year, in February, May and October.

*The quarterly data* are taken from purely national sources, and follow the general concepts, definitions and methods of seasonal adjustment used in their country of origin. Users should be aware that, owing to this lack of harmonization, the aggregates for the various countries given in this publication may not be totally comparable.

Eurostat is currently using only the expenditure measure of GDP. It should however be noted that some countries, such as the United Kingdom, estimate and publish GDPs based on more than one measure.

### Community total

The Community total for each aggregate is derived by totalling the data for the available countries converted into a common unit using purchasing power standards (PPS). For the quarterly aggregates, the Community total is the sum of the seasonally adjusted values of the four largest Member States (D, F, I, UK). These four countries accounting for only approximately 80 % of the GDP of the Community of Twelve, when referring to the Community it is not appropriate to use the definition of EUR 12 but to call it simply EUR. (It must however be said that the annual data which are in the tables, are EUR 12 data).

### Publications and storage of the data

The annual data are published each year in the volume '**National Accounts ESA - Aggregates**'. They are also available, via servers, from Eurostat's **Cronos** data base, SEF:SEC1. The quarterly data are also stored in **Cronos** SEF:ICG.

For all information on annual and quarterly aggregates, contact Eurostat in Luxembourg, tel. 4301-4351.

For all information on access to the Cronos data base, contact Eurostat in Luxembourg, tel. 4301-4567.

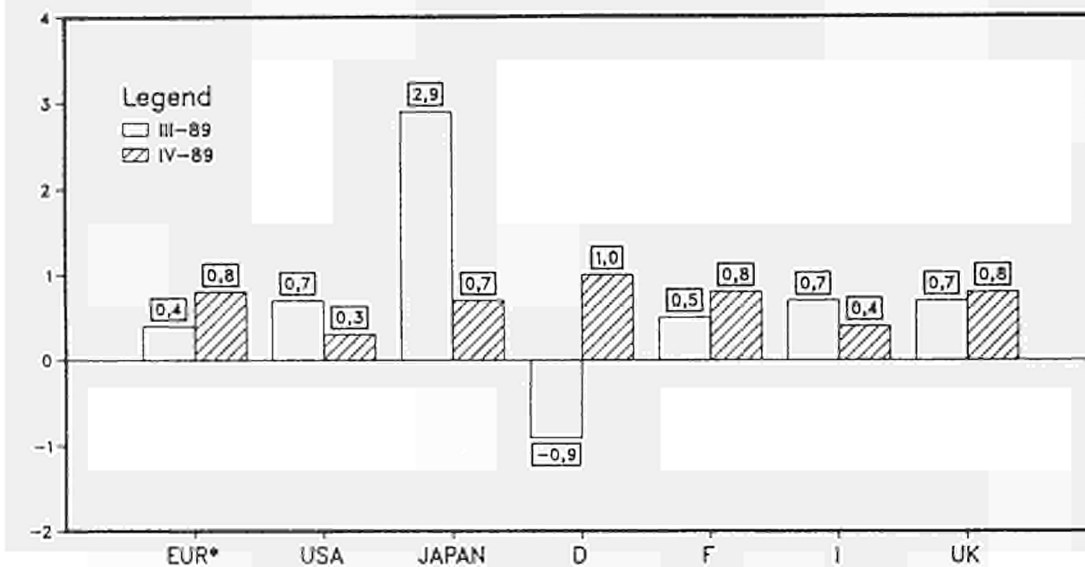
Requests for a subscription to this bulletin should be sent to the **Office for Official Publications of the European Communities, L-2985 Luxembourg**.

*Symbols and abbreviations: see last page.*

B I P  
VOLUMEN

G D P  
VOLUME

P I B  
VOLUME

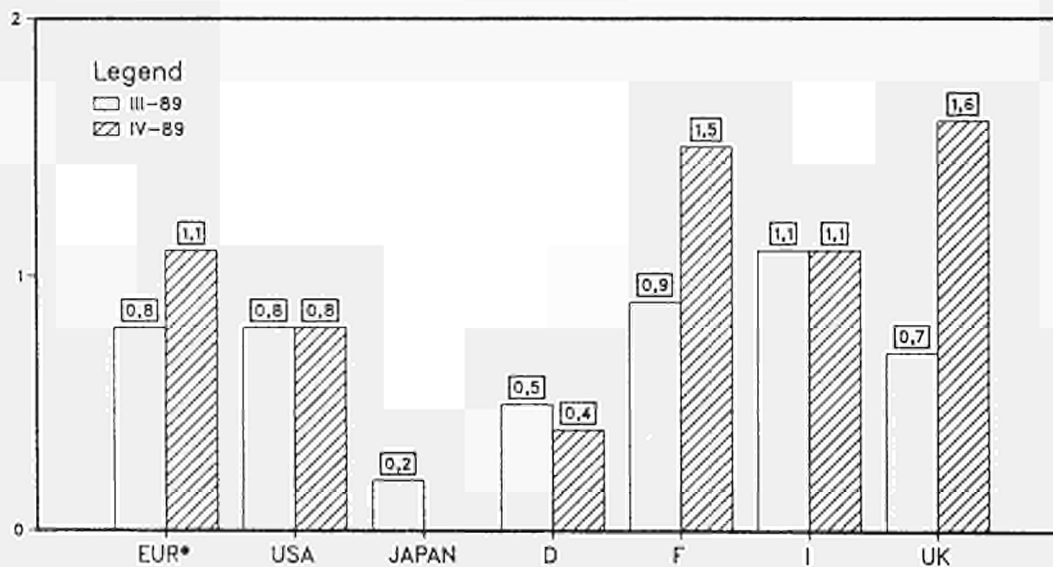


% Veränderung zum letzten Quartal, Saisonbereinigt  
 % change compared with previous quarter, seas. adj.  
 % par rapport au trimestre précédent, cvs

PREISE

PRICES

PRIX



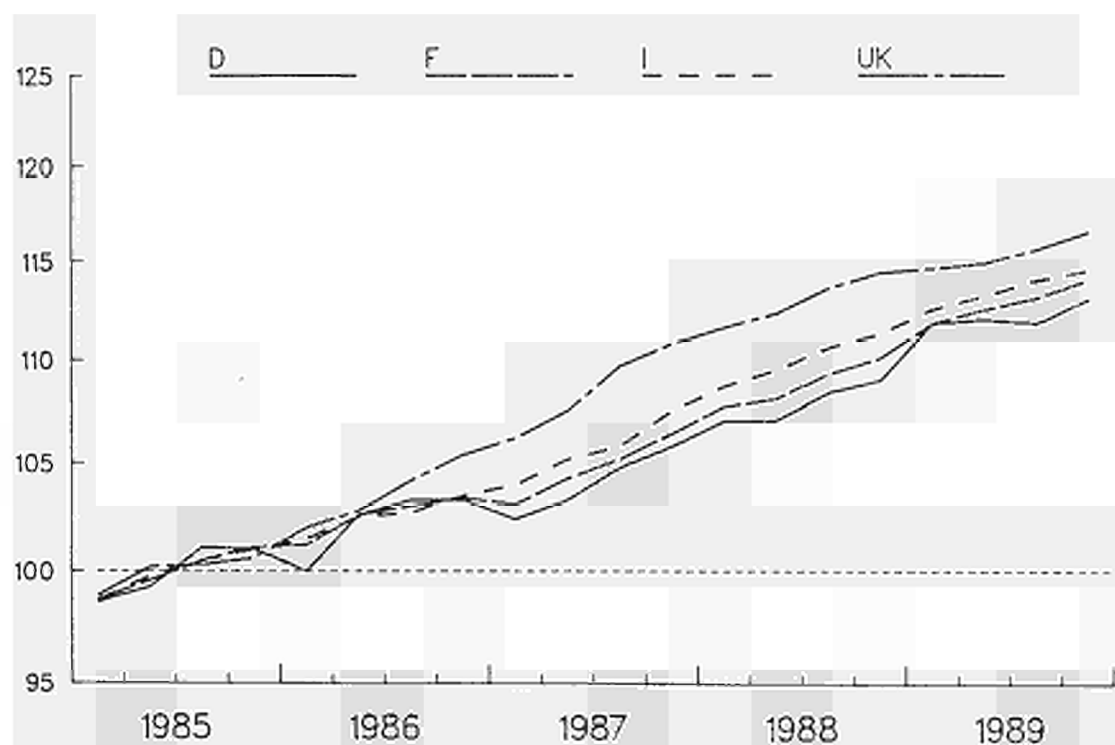
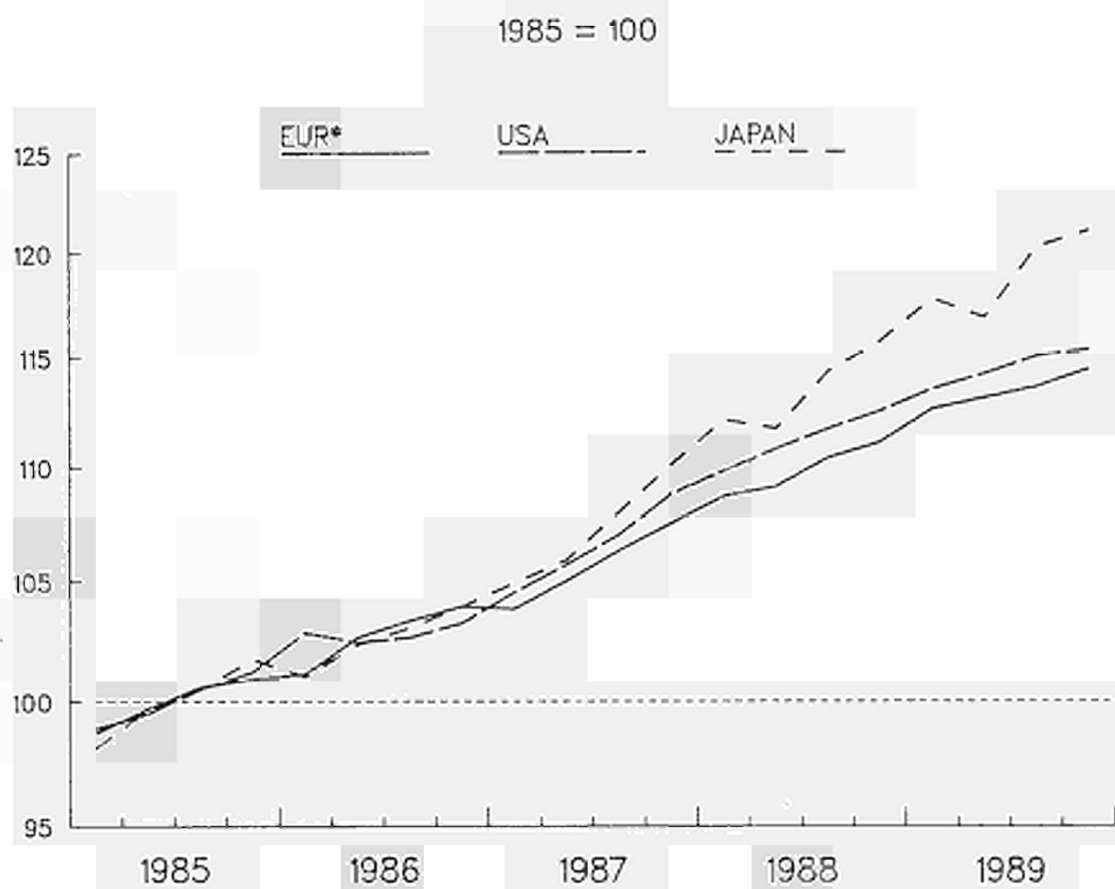
% Veränderung zum letzten Quartal (Saisonbereinigt)  
 % change compared with previous quarter (seas. adj.)  
 % par rapport au trimestre précédent (cvs)

• voir notes explicatives  
 see explanatory notes  
 siehe Erläuterungen

BIP - VOLUMEN

GDP - VOLUME

PIB - VOLUME



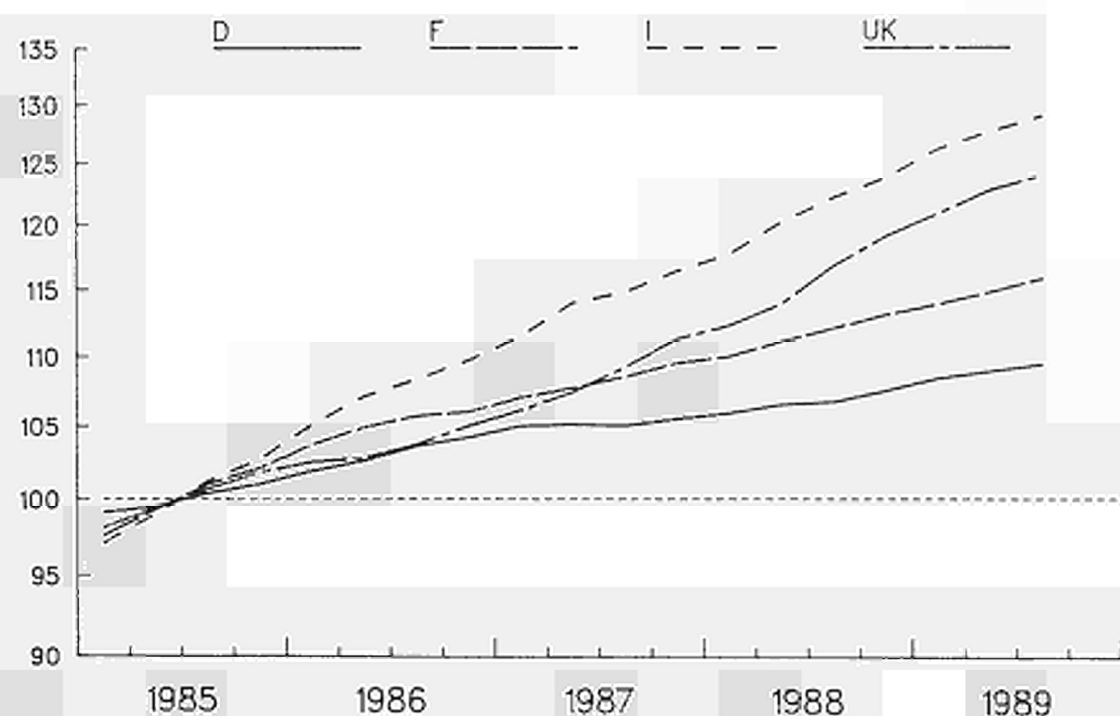
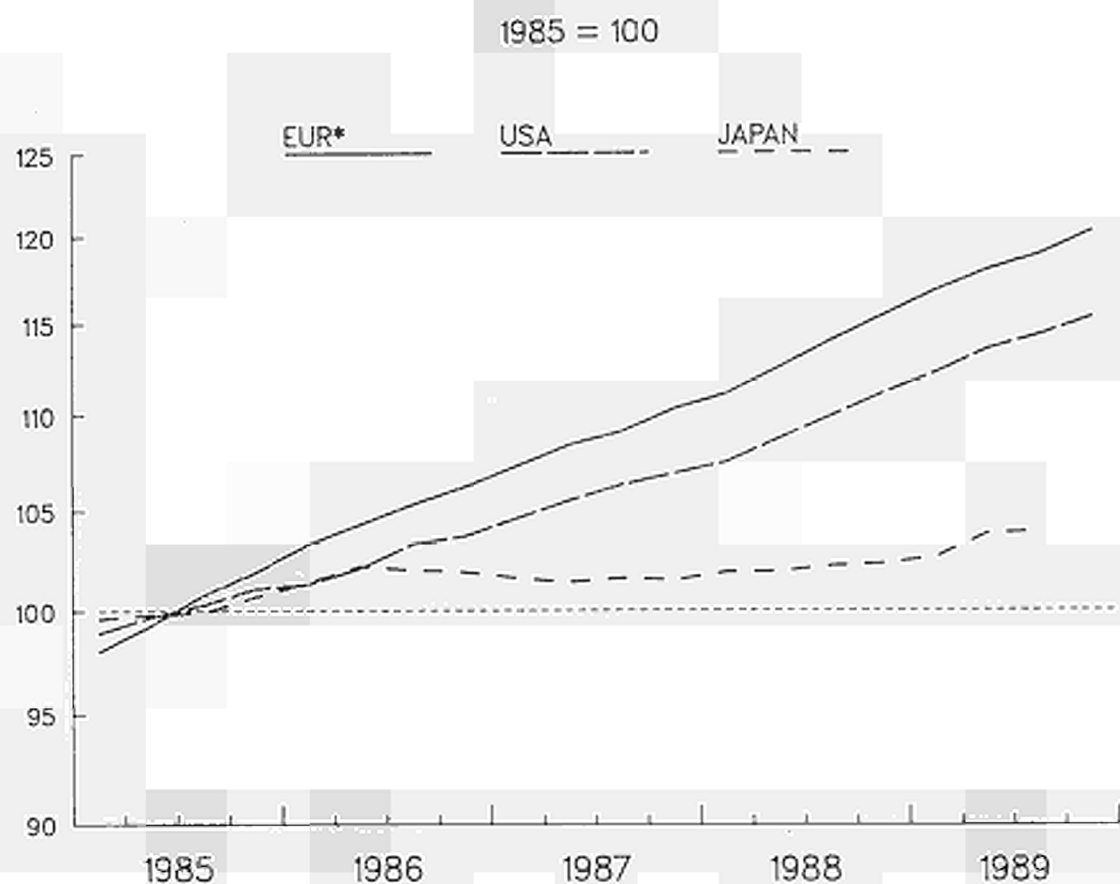
EINFACH-LOGARITHMISCHE SKALA  
• siehe Erläuterungen

SEMI-LOGARITHMIC SCALE  
• see explanatory notes

ECHELLE SEMI-LOGARITHMIQUE  
• voir notes explicatives

GROWTH OF GDP AND ITS COMPONENTS X VOLUME									
	GDP	PRIVATE CONSUMPTION	GOVERNMENT CONSUMPTION	GROSS FIXED CAP. FORMAT	CHANGE IN STDCKS (1)	DOMESTIC DEMAND	EXTERNAL BALANCE (1)	EXPORTS	IMPORTS
<b>EUR 12</b>									
1988	3.8	3.9	1.7	8.4	0.9	4.8	-2.2	5.4	8.6
1989 (*)	3.4	3.2	1.3	6.7	0.9	3.7	-2.6	7.9	8.7
1990 (*)	3.0	3.2	1.8	4.6	0.7	3.1	-2.7	6.7	6.6
1991 (*)	3.1	2.7	1.6	4.1	0.7	2.9	-2.5	7.2	6.5
1987 IV	1.1	1.5	0.5	2.2	1.1	1.7	-1.7	1.6	3.3
1988 I	1.1	0.8	0.5	2.3	1.4	1.3	-1.9	-1.4	-0.4
II	0.4	0.3	0.4	1.8	0.9	0.1	-1.6	4.5	3.3
III	1.2	1.5	0.1	1.8	1.5	2.0	-2.4	0.0	2.5
IV	0.6	0.9	0.7	1.1	1.8	1.2	-3.0	0.5	2.2
1989 I	2.4	0.7	-0.4	3.8	1.5	0.9	-2.5	4.4	2.6
II	0.4	0.5	0.0	-0.9	1.4	0.0	-2.1	3.8	2.4
III	0.4	0.4	0.5	0.6	1.1	0.2	-1.8	-1.0	-1.6
IV	0.7	0.9	-0.1	1.1	1.1	0.8	-1.9	2.3	2.2
<b>UNITED STATES</b>									
1988	4.6	3.4	2.3	5.4	0.2	3.2	-1.7	18.0	5.3
1989 (*)	3.0	2.7	2.7	1.6	0.1	2.4	-1.3	11.2	6.1
1990 (*)	2.1	1.8	1.1	2.6	0.3	2.0	-1.2	6.2	5.1
1991 (*)	2.3	2.1	0.4	5.0	0.2	2.2	-1.1	7.6	6.1
1987 IV	1.6	-0.2	1.1	0.0	1.6	1.5	-1.8	4.9	2.4
1988 I	1.0	1.5	-2.1	1.2	1.0	0.1	-1.0	6.9	0.3
II	0.9	0.6	1.0	2.9	0.6	0.7	-0.9	0.4	-0.6
III	0.8	0.8	-0.9	0.6	1.0	0.9	-0.9	2.3	2.5
IV	0.7	0.8	3.9	-0.8	0.5	0.6	-0.8	3.7	4.0
1989 I	0.9	0.5	-0.8	0.8	0.7	0.5	-0.4	3.3	-0.1
II	0.6	0.5	1.3	0.8	0.5	0.5	-0.3	3.1	2.3
III	0.7	1.4	-0.6	0.3	0.6	0.9	-0.4	1.0	1.8
IV	0.3	0.1	0.6	-1.1	0.6	0.1	-0.2	2.3	0.6
<b>JAPAN</b>									
1988	5.7	5.0	2.2	13.4	0.4	7.5	-0.2	8.1	22.7
1989 (*)	4.8	3.5	2.1	10.8	0.8	6.2	-1.0	15.5	21.4
1990 (*)	4.2	4.2	2.5	7.8	1.0	5.5	-2.0	15.5	21.2
1991 (*)	3.4	4.2	4.8	6.0	1.1	5.0	-3.3	13.8	20.3
1987 IV	1.9	0.9	0.2	4.8	0.5	2.2	1.3	0.8	5.2
1988 I	1.8	2.2	0.9	3.5	0.5	2.5	0.9	1.4	4.5
II	-0.3	0.6	0.4	0.4	0.6	0.6	0.0	-1.7	4.9
III	2.3	1.4	0.7	3.2	0.6	1.9	0.4	9.9	7.0
IV	1.2	0.0	0.8	2.5	0.3	0.7	0.4	1.0	0.5
1989 I	1.8	2.1	0.6	4.2	0.3	2.6	0.0	6.8	9.6
II	-0.8	-1.0	0.0	-0.1	0.7	-0.3	-0.5	-0.8	2.4
III	2.9	2.0	0.3	4.2	0.5	2.4	-0.1	6.6	4.1
IV	0.7	1.6	0.9	3.0	0.3	1.8	-1.0	1.0	6.3
<b>DEUTSCHLAND</b>									
1988	3.7	3.0	0.4	5.9	0.5	3.8	1.3	5.2	5.9
1989 (*)	3.4	1.4	-0.8	7.2	1.1	2.8	1.9	9.4	7.7
1990 (*)	3.7	3.6	0.1	6.4	0.5	3.6	2.0	9.3	9.3
1991 (*)	3.7	3.1	0.5	4.3	-0.1	2.7	3.0	12.0	9.4
1987 IV	0.9	1.1	0.2	0.4	-	1.3	1.8	2.2	3.5
1988 I	1.2	0.4	0.6	3.3	-	1.1	1.9	0.5	0.3
II	-	-0.3	0.6	-1.5	-	0.1	1.7	1.6	2.2
III	1.4	1.4	0.7	0.9	-	0.9	2.1	1.7	0.5
IV	0.5	0.2	0.5	1.0	-	0.8	1.8	1.2	2.3
1989 I	2.6	0.5	-1.4	9.5	-	0.8	3.4	5.7	0.8
II	0.2	0.2	0.0	-4.0	-	0.4	3.2	5.0	6.2
III	-0.1	0.2	0.0	-1.4	-	-0.4	3.5	-2.7	-3.6
IV	1.0	1.0	-0.8	3.4	-	2.8	1.7	-0.2	4.8
<b>FRANCE</b>									
1988	3.3	2.5	2.2	7.5	0.6	3.5	-2.4	7.2	7.5
1989 (*)	3.5	2.9	2.8	5.1	0.6	3.3	-2.1	10.1	8.4
1990 (*)	3.2	2.8	3.0	4.6	0.7	3.3	-2.1	6.9	6.7
1991 (*)	3.2	2.7	2.4	3.9	0.8	3.0	-1.9	7.3	6.3
1987 IV	1.1	1.6	0.6	2.1	2.9	-0.3	-2.2	4.0	3.9
1988 I	1.2	0.2	1.0	2.4	4.2	2.7	-2.2	1.0	0.8
II	0.3	0.3	0.6	1.5	4.2	0.4	-2.4	0.1	0.7
III	1.1	1.7	0.5	3.0	2.9	0.5	-2.8	2.1	3.7
IV	0.8	0.7	0.4	0.9	4.5	2.2	-3.0	1.2	2.0
1989 I	1.5	0.6	0.4	2.4	2.2	-1.2	-2.0	7.7	3.3
II	0.6	0.5	0.3	-0.4	4.1	2.1	-2.0	0.8	0.7
III	0.5	1.3	0.4	1.5	1.0	-1.8	-2.1	-1.4	-0.9
IV	0.7	0.5	0.1	0.7	3.0	2.5	-2.3	4.9	5.3
<b>ITALIA</b>									
1988	3.9	4.2	3.0	4.9	2.0	4.6	-3.3	5.3	7.8
1989 (*)	3.2	3.8	0.5	5.1	1.8	3.3	-3.4	10.1	9.6
1990 (*)	3.1	3.5	2.5	4.5	2.0	3.7	-4.0	5.6	7.3
1991 (*)	2.8	3.2	2.5	3.8	1.9	3.2	-4.3	5.4	6.3
1987 IV	1.6	1.0	0.8	2.6	2.3	2.1	-4.2	2.1	3.7
1988 I	1.1	0.8	0.8	2.5	2.6	1.4	-4.4	-7.2	-4.8
II	0.7	1.0	0.6	1.0	0.9	-0.7	-3.1	14.2	6.1
III	1.1	1.1	0.4	1.0	2.4	2.4	-4.4	-3.2	2.6
IV	0.6	1.2	0.2	1.8	1.9	0.8	-4.6	2.4	2.6
1989 I	1.0	0.9	0.0	1.5	3.0	1.9	-5.4	-0.4	3.2
II	0.7	0.8	0.0	1.0	1.6	-0.6	-4.2	9.7	3.3
III	0.7	0.6	0.0	1.1	1.4	0.4	-3.9	-1.5	-2.2
IV	0.4	0.8	0.0	0.4	0.9	0.1	-3.6	1.6	0.2
<b>UNITED KINGDOM</b>									
1988	4.1	6.9	0.4	13.1	0.9	7.3	-3.6	0.7	12.3
1989 (*)	2.3	3.8	0.5	4.8	0.7	3.2	-4.6	4.1	7.1
1990 (*)	1.6	2.4	1.3	-1.0	-0.7	0.2	-3.2	6.5	1.5
1991 (*)	2.4	1.6	1.2	1.8	-0.2	2.0	-2.8	4.9	3.6
1987 IV	1.0	2.4	0.2	4.4	0.6	2.1	-1.8	-1.7	2.1
1988 I	0.7	1.9	-0.3	0.6	0.7	1.4	-2.5	-1.2	1.2
II	0.6	0.3	-0.2	7.5	0.0	0.7	-2.7	4.4	4.6
III	1.2	1.9	-0.9	2.8	1.3	2.7	-4.3	-1.5	3.8
IV	0.7	1.6	1.5	0.6	1.8	1.9	-5.6	-2.4	2.0
1989 I	0.2	0.9	-0.6	0.2	1.8	0.4	-5.8	3.5	3.6
II	0.2	0.8	-0.2	0.4	0.9	-0.3	-5.2	0.3	-1.4
III	0.7	-0.5	1.3	1.6	1.1	0.4	-4.9	2.0	0.9
IV	0.2	1.3	0.2	-0.5	-0.6	-0.9	-3.2	3.8	-1.7

X CHANGE COMPARED WITH PREVIOUS PERIOD (FOR QUARTERS, SEAS. ADJUSTED )  
(1) PERCENT OF GDP  
(\*) FORECASTS



EINFACH-LOGARITHMISCHE SKALA  
• siehe Erläuterungen

SEMI-LOGARITHMIC SCALE  
• see explanatory notes

ECHELLE SEMI-LOGARITHMIQUE  
• voir notes explicatives

CHANGE IN PRICE OF GDP AND ITS COMPONENTS X							
	GDP	PRIVATE CONSUMPTION	GOVERNMENT CONSUMPTION	GROSS FIXED CAP. FORMAT	DOMESTIC DEMAND	EXPORTS	IMPORTS
<b>EUR 12</b>							
1988	4.5	3.7	4.8	4.1	4.1	2.9	2.2
1989 (*)	4.9	4.8	5.0	4.6	4.7	6.4	6.5
1990 (*)	5.1	4.7	5.8	4.3	4.7	2.7	1.7
1991 (*)	4.5	4.4	5.1	4.2	4.4	3.6	3.3
1987 IV	1.1	0.7	1.9	1.1	0.8	0.0	-0.7
1988 I	0.8	0.6	0.4	1.0	0.8	-0.5	-0.6
II	1.2	1.0	1.4	0.6	1.3	1.0	1.4
III	1.3	1.0	1.9	0.8	1.1	2.2	1.7
IV	1.2	0.8	1.1	0.8	0.9	1.3	0.4
1989 I	1.2	1.5	1.0	1.4	1.4	1.5	2.0
II	1.0	1.1	1.3	1.4	1.3	1.9	3.0
III	0.8	1.0	1.2	1.1	0.9	0.1	0.3
IV	1.2	1.0	2.1	0.9	1.1	0.3	0.1
<b>UNITED STATES</b>							
1988	3.2	4.1	3.9	1.2	3.6	3.8	3.2
1989 (*)	4.1	4.4	:	:	:	:	:
1990 (*)	3.5	4.1	:	:	:	:	:
1991 (*)	4.2	4.2	:	:	:	:	:
1987 IV	0.5	1.1	0.4	0.5	0.6	0.4	1.1
1988 I	0.6	0.6	2.0	0.6	0.8	1.1	2.2
II	1.2	1.2	0.5	0.0	1.2	1.6	0.2
III	1.0	1.0	0.8	0.4	0.7	2.2	0.6
IV	1.2	1.1	1.5	1.8	1.3	0.4	1.5
1989 I	1.0	1.2	1.3	0.2	1.1	1.1	2.7
II	1.1	1.4	0.4	0.2	1.1	0.3	:
III	0.8	0.5	1.2	0.3	0.5	-0.6	:
IV	0.8	1.1	1.2	0.1	0.9	0.1	:
<b>JAPAN</b>							
1988	0.4	0.0	0.9	-0.9	-0.3	0.5	-0.4
1989 (*)	1.4	1.7	:	:	:	:	-19.5
1990 (*)	2.6	2.9	:	:	:	:	:
1991 (*)	3.3	3.5	:	:	:	:	:
1987 IV	-0.1	0.1	-1.3	0.0	-0.2	-1.6	-4.3
1988 I	0.4	-0.6	1.1	-0.1	-0.2	-0.2	-2.2
II	0.1	0.4	0.9	-1.1	-0.2	1.2	3.5
III	0.3	0.1	0.7	0.4	0.5	2.0	2.4
IV	0.1	0.9	-1.0	-0.4	0.2	-2.1	-4.5
1989 I	0.3	-0.6	2.0	0.9	-0.1	0.6	1.8
II	1.2	1.7	1.5	1.2	1.8	4.2	12.0
III	-0.1	0.1	1.3	-0.3	-0.2	0.4	-0.9
IV	0.9	0.3	-0.2	-0.2	0.3	0.5	-0.8
<b>DEUTSCHLAND</b>							
1988	1.5	1.3	1.4	1.4	1.2	1.9	1.4
1989 (*)	2.5	3.1	2.5	3.1	3.1	2.4	5.0
1990 (*)	3.4	2.9	4.1	3.5	3.0	1.1	0.1
1991 (*)	3.6	3.1	4.3	4.1	3.4	2.9	2.8
1987 IV	0.5	0.2	0.2	0.4	0.1	0.4	-0.6
1988 I	0.3	0.1	0.2	0.1	0.0	0.2	-0.8
II	0.6	0.3	0.8	0.4	0.7	0.7	1.3
III	0.2	0.7	0.4	0.8	0.6	0.8	2.0
IV	0.8	0.3	0.2	0.5	0.4	0.8	-0.4
1989 I	0.9	2.0	1.5	0.8	1.5	0.4	2.0
II	0.4	0.2	-0.5	1.3	0.6	1.4	3.0
III	0.5	0.4	1.3	0.6	0.4	0.0	-0.9
IV	0.4	0.4	0.6	0.5	0.3	-0.7	-0.7
<b>FRANCE</b>							
1988	3.3	3.0	2.4	2.4	3.2	2.8	2.8
1989 (*)	3.0	3.5	2.5	2.9	3.2	6.7	8.6
1990 (*)	3.0	2.9	2.9	2.6	2.8	1.0	0.7
1991 (*)	2.8	3.0	3.0	2.7	2.9	3.0	3.4
1987 IV	1.0	0.5	1.9	0.4	2.4	-0.1	0.2
1988 I	0.5	0.5	-0.7	0.5	-0.9	-0.8	-0.3
II	0.8	1.0	1.0	0.8	1.3	1.6	1.2
III	1.0	0.8	0.6	0.9	1.7	2.5	1.4
IV	0.7	0.6	0.6	0.9	-0.6	1.0	0.7
1989 I	0.8	0.8	0.7	0.8	-3.0	1.5	3.2
II	0.7	1.1	0.9	0.9	-0.6	2.0	2.8
III	0.9	0.6	0.8	0.6	3.3	-0.2	-0.6
IV	1.6	0.7	4.8	0.3	-0.2	0.3	-0.3
<b>ITALIA</b>							
1988	6.0	4.8	8.7	4.6	5.7	4.5	4.1
1989 (*)	6.3	6.0	7.8	5.5	6.3	6.6	7.5
1990 (*)	6.5	5.5	8.5	4.9	5.8	2.6	0.6
1991 (*)	5.3	5.0	5.0	4.7	4.9	3.7	3.2
1987 IV	1.3	1.3	3.4	1.9	0.8	1.3	-0.9
1988 I	1.3	1.1	1.1	1.0	1.4	-0.1	-0.1
II	2.0	1.2	2.3	1.1	2.4	1.5	2.9
III	2.2	1.4	3.8	1.0	1.7	3.1	2.1
IV	1.9	1.3	1.1	0.3	1.3	2.6	2.1
1989 I	1.5	1.7	1.4	2.1	1.4	1.6	2.4
II	1.6	1.6	2.7	1.7	1.9	1.3	2.0
III	1.1	1.3	1.2	1.4	1.3	0.1	0.4
IV	1.1	1.4	1.0	0.9	1.1	0.6	0.2
<b>UNITED KINGDOM</b>							
1988	6.6	5.0	6.9	6.6	5.7	0.6	-0.7
1989 (*)	6.9	5.8	6.9	6.4	6.0	8.7	5.8
1990 (*)	6.3	6.5	6.9	5.3	6.4	6.5	6.0
1991 (*)	5.4	5.1	7.0	4.3	5.3	3.3	2.7
1987 IV	1.7	1.1	1.9	2.2	1.5	-1.3	-1.3
1988 I	1.2	0.9	1.1	2.6	1.2	-1.4	-0.9
II	1.6	1.9	1.6	-0.2	1.6	0.4	0.4
III	2.1	1.3	2.9	0.5	1.4	3.3	1.3
IV	2.1	1.0	2.3	1.9	1.4	1.2	-0.3
1989 I	1.7	1.2	0.4	2.0	1.2	2.9	0.7
II	1.5	1.5	2.1	1.7	1.9	3.2	4.0
III	0.7	1.6	1.7	1.8	1.2	0.6	2.3
IV	1.6	1.6	1.6	1.8	1.8	1.4	1.4

X CHANGE COMPARED WITH PREVIOUS PERIOD (FOR QUARTERS, SEAS. ADJUSTED DATA)  
(\*) FORECASTS

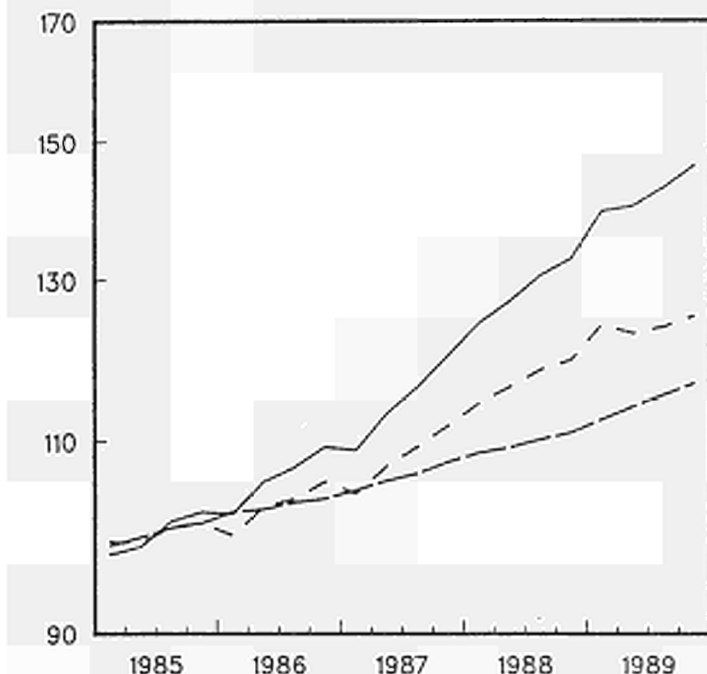
BRUTTOANLAGE-  
INVESTITIONEN

GROSS FIXED  
CAPITAL FORMATION

FORMATION BRUTE  
DE CAPITAL FIXE

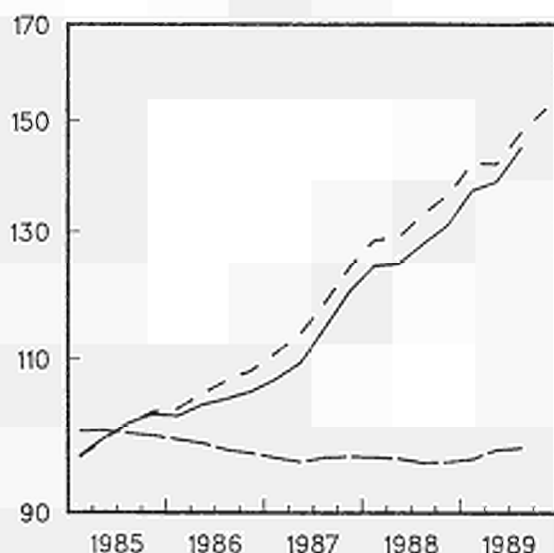
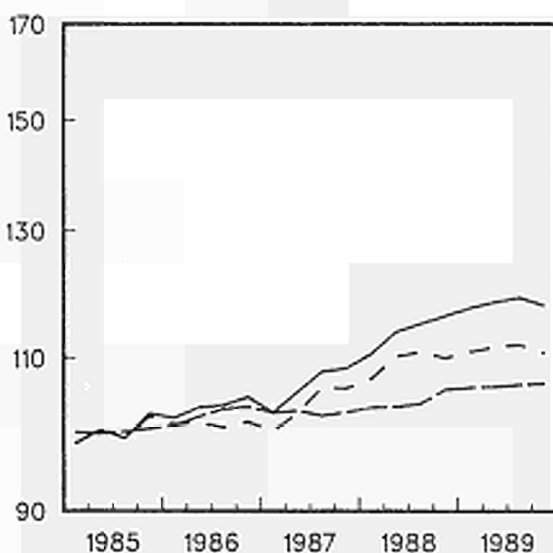
1985 = 100

EUR\*



USA

JAPAN



- in jew. Preisen (sais. ber.), At current prices (seas. adj.), Aux prix courants (cvs)
- - - in Preisen von 1985 (sais. ber.), At 1985 prices (seas. adj.), Aux prix de 1985 (cvs)
- · - implizierter Preisindex (sais. ber.), Implied deflator (seas. adj.), Ind. implicite des prix (cvs)

EINFACH-LOGARITHMISCHE SKALA  
• siehe Erläuterungen

SEMI-LOGARITHMIC SCALE  
• see explanatory notes

ECHELLE SEMI-LOGARITHMIQUE  
• voir notes explicatives



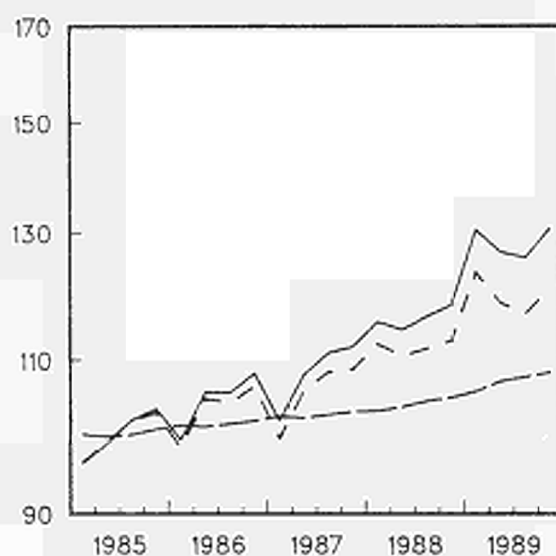
BRUTTOANLAGE-  
INVESTITIONEN

GROSS FIXED  
CAPITAL FORMATION

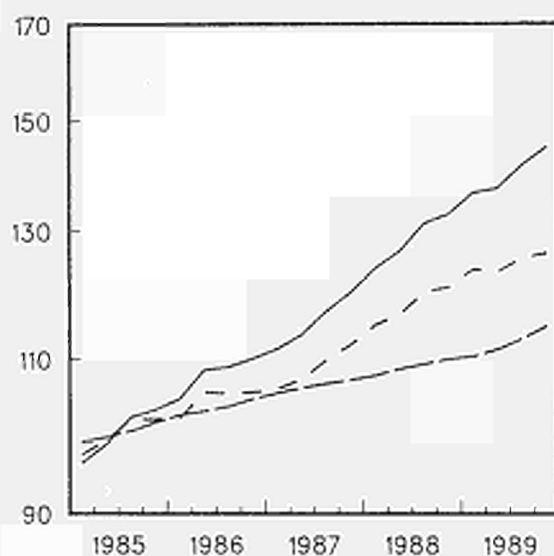
FORMATION BRUTE  
DE CAPITAL FIXE

1985 = 100

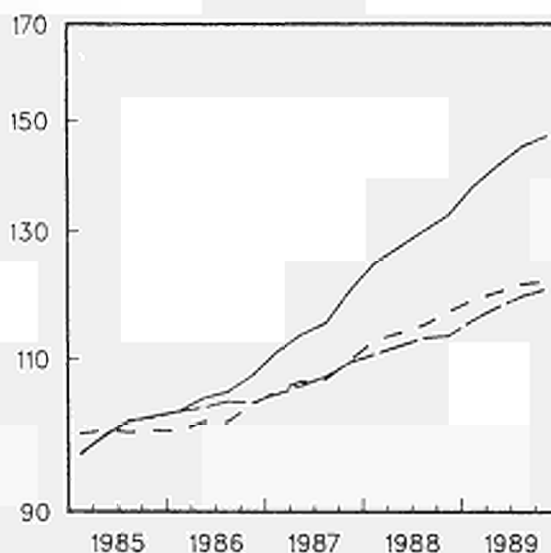
DEUTSCHLAND



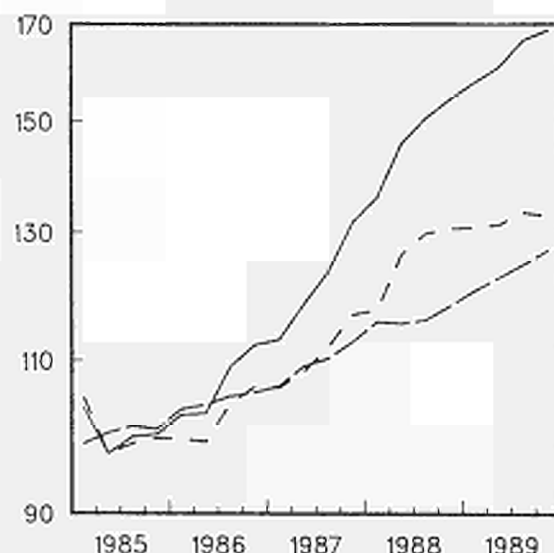
FRANCE



ITALIA



UNITED KINGDOM



- in jew. Preisen (sais. ber.), At current prices (seas. adj.), Aux prix courants (cvs)
- - - in Preisen von 1985 (sais. ber.), At 1985 prices (seas. adj.), Aux prix de 1985 (cvs)
- · - implizierter Preisindex (sais. ber.), Implied deflator (seas. adj.), Ind. implicite des prix (cvs)

EINFACH-LOGARITHMISCHE SKALA

SEMI-LOGARITHMIC SCALE

ECHELLE SEMI-LOGARITHMIQUE

## **Symbols and abbreviations**

<b>:</b>	No data available
<b>-</b>	Nil
<b>%</b>	Per cent
<b>1985 = 100</b>	Reference year
<b>EUR 12 = 100</b>	Data for countries expressed as a percentage of the Community of 12 total (= 100)
<b>ESA</b>	European system of integrated economic accounts

**Venta y suscripciones • Salg og abonnement • Verkauf und Abonnement • Πωλήσεις και συνδρομές  
Sales and subscriptions • Vente et abonnements • Vendita e abbonamenti  
Verkoop en abonnementen • Venda e assinaturas**

**BELGIQUE / BELGIË**

**Moniteur beige / Belgisch Staatsblad**  
Rue de Louvain 42 / Louvenseweg 42  
1000 Bruxelles / 1000 Brussel  
Tél. (02) 512 00 26  
Fax 511 01 84  
CCP / Postrekening 000-2005502-27

Autres distributeurs / Overige verkooppunten

**Librairie européenne /  
Europese Boekhandel**  
Avenue Albert Jonnart 50 /  
Albert Jonnartlaan 50  
1200 Bruxelles / 1200 Brussel  
Tél. (02) 734 02 81  
Fax 735 08 60

**Jean De Lannoy**  
Avenue du Roi 202 / Koningslaan 202  
1060 Bruxelles / 1060 Brussel  
Tél. (02) 538 51 69  
Télex 63220 UNBOOK B

**CREDOC**  
Rue de la Montagne 34 / Bergstraat 34  
Bte 11 / Bus 11  
1000 Bruxelles / 1000 Brussel

**DANMARK**

**J. H. Schultz Information A/S**  
EF-Publikationer  
Ottillavej 18  
2500 Valby  
Tlf. 36 44 22 66  
Fax 36 44 01 41  
Girokonto 6 00 08 86

**BR DEUTSCHLAND**

**Bundesanzeiger Verlag**  
Breite Straße  
Postfach 10 80 06  
5000 Köln 1  
Tel. (0221) 20 29-0  
Fernschreiber:  
ANZEIGER BONN 8 882 595  
Fax 20 29 278

**GREECE**

**G.C. Eleftheroudakis SA**  
International Bookstore  
Nikis Street 4  
10563 Athens  
Tel. (01) 322 63 23  
Telex 219410 ELEF  
Fax 323 98 21

**ESPAÑA**

**Boletín Oficial del Estado**  
Tratfalgar, 27  
28010 Madrid  
Tel. (91) 446 60 00

**Mundi-Prensa Libros, S.A.**  
Castelló, 37  
28001 Madrid  
Tel. (91) 431 33 99 (Libros)  
431 32 22 (Suscripciones)  
435 38 37 (Dirección)

Télex 49370-MPLI-E  
Fax (91) 275 39 98

Sucursal:  
**Librería Internacional AEDOS**  
Consejo de Ciento, 391  
08009 Barcelona  
Tel. (93) 301 88 15  
Fax (93) 317 01 41

Generalitat de Catalunya:  
**Librería Ràmbia dels estudis**  
Ràmbia, 118 (Palau Moja)  
08002 Barcelona  
Tel. (93) 302 68 35  
302 64 62

**FRANCE**

**Journal officiel**  
Service des publications  
des Communautés européennes  
26, rue Desaix  
75727 Paris Cedex 15  
Tél. (1) 40 58 75 00  
Fax (1) 40 58 75 74

**IRELAND**

**Government Publications Sales Office**  
Sun Alliance House  
Molesworth Street  
Dublin 2  
Tel. 71 03 09

or by post  
**Government Stationery Office**  
EEC Section  
6th floor  
Bishop Street  
Dublin 8  
Tel. 78 16 66  
Fax 78 06 45

**ITALIA**

**Licosa Spa**  
Via Benedetto Fortini, 120/10  
Casella postale 552  
50125 Firenze  
Tel. (055) 64 54 15  
Fax 64 12 57  
Telex 570466 LICOSA I  
CCP 343 509

Subagenti:  
**Libreria scientifica Lucio de Biasio - AEIOU**  
Via Meravigli, 16  
20123 Milano  
Tel. (02) 80 76 79

**Herder Editrice e Libreria**  
Piazza Montecitorio, 117-120  
00186 Roma  
Tel. (06) 679 46 28/679 53 04

**Libreria giuridica**  
Via 12 Ottobre, 172/R  
16121 Genova  
Tel. (010) 59 56 93

**GRAND-DUCHÉ DE LUXEMBOURG**

Abonnements seulement  
Subscriptions only  
Nur für Abonnements

**Messageries Paul Kraus**  
11, rue Christophe Plantin  
2339 Luxembourg  
Tél. 499 88 88  
Télex 2515  
CCP 49242-63

**NEDERLAND**

**SDU uitgeverij**  
Christoffel Plantijnstraat 2  
Postbus 20014  
2500 EA 's-Gravenhage  
Tel. (070) 78 98 80 (bestellingen)  
Fax (070) 47 63 51

**PORTUGAL**

**Imprensa Nacional**  
Casa da Moeda, EP  
Rua D. Francisco Manuel de Melo, 5  
1092 Lisboa Codex  
Tel. (01) 69 34 14

**Distribuidora de Livros Bertrand, Ld.º**  
**Grupo Bertrand, SARL**  
Rua das Terras dos Vales, 4-A  
Apartado 37  
2700 Amadora Codex  
Tel. (01) 493 90 50 - 494 87 88  
Telex 15788 BERDIS  
Fax 491 02 55

**UNITED KINGDOM**

**HMSO Books (PC 16)**  
HMSO Publications Centre  
51 Nine Elms Lane  
London SW8 5DR  
Tel. (01) 873 9090  
Fax GP3 873 8463

Sub-agent:

**Alan Armstrong Ltd**  
2 Arkwright Road  
Reading, Berks RG2 0SQ  
Tel. (0734) 75 18 55  
Telex 849937 AAALTD G  
Fax (0734) 75 51 64

**SCHWEIZ / SUISSE / SVIZZERA**

**OSEC**  
Stampfenbachstraße 65  
8035 Zürich  
Tel. (01) 365 51 51  
Fax (01) 365 52 21

**ÖSTERREICH**

**Manz'sche Verlags-  
und Universitätsbuchhandlung**  
Kohlmarkt 16  
1014 Wien  
Tel. (0222) 531 61-0  
Telex 11 25 00 BOX A  
Fax (0222) 531 61-81

**TÜRKIYE**

**Dünya süper veb ofset A.Ş.**  
Narlıbahçe Sokak No. 15  
Cağaloğlu  
İstanbul  
Tel. 512 01 90  
Telex 23822 DSVO-TR

**UNITED STATES OF AMERICA**

**UNIPUB**  
4811-F Assembly Drive  
Lanham, MD 20706-4391  
Tel. Toll Free (800) 274 4888  
Fax (301) 459 0056  
Telex 7108260418

**CANADA**

**Renouf Publishing Co., Ltd**  
61 Sparks Street  
Ottawa  
Ontario K1P 5R1  
Tel. Toll Free 1 (800) 287 41 64  
Ottawa Region (813) 238 89 85-6  
Telex 053-4938

**JAPAN**

**Kinokuniya Company Ltd**  
17-7 Shinjuku 3-Chome  
Shinjuku-ku  
Tokyo 180-91  
Tel. (03) 354 01 31

**Journal Department**  
PO Box 55 Chitose  
Tokyo 156  
Tel. (03) 439 01 24

**SVERIGE**

**BTJ**  
Box 200  
22100 Lund  
Tel. (046) 18 00 00  
Fax (046) 18 01 25

**AUTRES PAYS  
OTHER COUNTRIES  
ANDERE LÄNDER**

**Office des publications officielles  
des Communautés européennes**  
2, rue Mercier  
L-2985 Luxembourg  
Tél. 49 92 81  
Télex PUBOF LU 1324 b  
Fax 48 85 73  
CC bancaire BIL 8-109/6003/700

Price (excl. VAT) in Luxembourg: Single copy ECU 5.50 • Subscription ECU 20.50



OFICINA DE PUBLICACIONES OFICIALES DE LAS COMUNIDADES EUROPEAS  
KONTORET FOR DE EUROPÆISKE FÆLLESSKABERS OFFICIELLE PUBLIKATIONER  
AMT FÜR AMTLICHE VERÖFFENTLICHUNGEN DER EUROPÄISCHEN GEMEINSCHAFTEN  
ΥΠΗΡΕΣΙΑ ΕΠΙΣΗΜΩΝ ΕΚΔΟΣΕΩΝ ΤΩΝ ΕΥΡΩΠΑΪΚΩΝ ΚΟΙΝΟΤΗΤΩΝ  
OFFICE FOR OFFICIAL PUBLICATIONS OF THE EUROPEAN COMMUNITIES  
OFFICE DES PUBLICATIONS OFFICIELLES DES COMMUNAUTÉS EUROPÉENNES  
UFFICIO DELLE PUBBLICAZIONI UFFICIALI DELLE COMUNITÀ EUROPEE  
BUREAU VOOR OFFICIËLE PUBLIKATIES DER EUROPESE GEMEENSCHAPPEN  
SERVIÇO DAS PUBLICAÇÕES OFICIAIS DAS COMUNIDADES EUROPEIAS

ISSN 1010-1764

L - 2985 Luxembourg

Catalogue number: CA-BY-90-002-EN-C