

Verzoek om medewerking om "succesverhalen" op te sporen

In opdracht van de Europese Commissie is de Nederlandse Voorlichtingspartner, het NBBi op zoek naar organisaties, waar het gebruik van elektronische informatiediensten en -produkten heeft geleid tot aansprekend succes. De Europese Commissie wil namelijk dat bedrijven en organisaties in Europa op de hoogte zijn van de voordelen van het gebruik van elektronische informatie. Deze voordelen kunnen het beste aangevoeld worden door succesverhalen over het gebruik van elektronische informatie. Daarom is het NBBi op zoek naar "succesverhalen".

Graag zouden wij gebruik maken van uw medewerking om deze succesverhalen op te sporen. Kent u voorbeelden van organisaties waar het gebruik van elektronische informatie daadwerkelijk tot aantoonbaar succes heeft geleid? En waaruit bestaat dat succes; is er een opdracht binnengehaald of geld bespaard? Een beter imago gecreëerd? Konden nieuwe zakenpartners gevonden worden? Of zijn er andere voorbeelden van succes? Met succes bedoelen wij dus niet alleen financieel succes, maar ook succes op marketing-, verkoop-, bedrijfsvoerings- en publicitair gebied of het voorkomen van "missers" en fouten.

Kent u zelf succesverhalen of heeft u tips waar deze successen te vinden zijn, dan verzoeken wij u, telefonisch of per fax, contact op te nemen met het NBBi Projectbureau voor Informatiemanagement, Postbus 80544, 250B GM Den Haag. Telefoon: 070-3607833, fax: 070-3615011. Contactpersoon: Annemiek Wiercx. Vanzelfsprekend behandelen wij uw informatie vertrouwelijk.

In this issue:

TED	p. 4
Videotex	pp. 5-7
CORDIS	pp. 8-9
I'M Guide	p. 11

EURODICAUTOM

YOUR ELECTRONIC DICTIONARY



Introduction

The Eurodicautom database, developed by the European Commission's translation services and produced by the European Commission, exists as an on-line terminology database which contains translations of scientific and technical terms, contextual phrases and abbreviations in all nine official languages of the European Union.

Until now, users have been able to choose between the CCL (Common Command Language) version and the original query language used by the EC's translation services (Call EDIC). However, users of the CCL version of the database will have noticed that it is no longer accessible. This version has been withdrawn from the ECHO host and now only the Call EDIC version remains. Regular users of the CCL need not fear the Call EDIC version, since it provides exactly the same, if not better, search possibilities and is, like all ECHO databases, extremely user friendly (as the examples given in this article show). It has been and continues to be refined to such an extent that it can

offer the same quick and concise search results as its former counterpart. On-line assistance is (as with the CCL version) constantly available and can be obtained at any time during a search simply by typing "H" at the asterisk (*) prompt.

The EC Translation Service's query language (Call EDIC)

Use of the Call EDIC version requires very little user input and is run by a series of easily remembered commands. Updated monthly, this system is conceived as an interactive dictionary for translators. It aims to provide a list of terms (in their different contexts) matching the query, so that the translator can browse and choose the correct translation. When logging on to the Eurodicautom database, the user will be presented with the following. (N.B. user input is shown in bold).

?

BASE EU92

BASE COMMAND ACCEPTED FOR EU92;EURODICAUTOM;28.04.1994



 * EURODICAUTOM *

For detailed information on EURODICAUTOM, please type : "INFO EURODICAUTOM". To search in original query language (CEC), please type : "CALL EDIC". To search using the CCL version, please type : "CALL CHOICE".

?

call edic

NEW FEATURE ONLINE: SEND A MESSAGE TO THE DB-PRODUCER WITH THE M-COMMAND: M <TEXT TEXT>ONLY POSSIBLE AFTER DISPLAY OF A DOCUMENT

% SSM3034
 PRESS L FOR TERMINOLOGY OR X FOR ABBREVIATION

*I

TYPE CODE OF SOURCE LANGUAGE
 DE GERMAN DA DANISH EN ENGLISH
 FR FRENCH IT ITALIAN NL DUTCH
 PT PORTUGUESE ES SPANISH

*en

TYPE CODE(S) OF TARGET LANGUAGE(S) WITH SINGLE SPACE BETWEEN (FOR EXAMPLE: DE NL) OR A FOR ANY LANGUAGES

*a

SOURCE LANGUAGE :EN
 TARGET LANGUAGE(S): DE IT FR NL DA ES PT
 SUBJECT CODE : PRESS Q OR ANOTHER COMMAND

By typing CALL EDIC, the user selects to use the Commission's Translation Service's query language. The user can choose to search for either terminology or abbreviations and if the user chooses "L" for terminology he/she will be asked which source language is to be used (i.e. the language in which the search terms to be translated will be entered). Once this has been established the user is then required to specify into which language the term should be translated. Here, the user may specify any number of languages or even select all languages available. Once the scene is set, the user can commence the search.

Searching Eurodicautom using the Commission's Translation Services' version

The asterisk sign (*) prompts the user for input. In order to obtain the translation of a specific term (single word or

multiple word terms) simply type the word preceded by the command Q and press the enter key.

*q airbag

DOC = 1 PAGE = 1
 BE= BTB TY= TFI93 NI= 0000931
 DATE = 931111 CF= 4 CM NOT SPECIFIED
 EN VE airbag
 ES VE airbag
 FR VE air-bag
 RF Le Monde,7.7.92.-26
 NT Coussin autogonflable place dans le volant de la voiture qui, en cas de choc, protege le conducteur ou le passager.
 PRESS C TO CONTINUE OR GIVE ANOTHER COMMAND

In reply to a specific query, the system will offer a series of records/documents which match the request. The most relevant documents are always shown first. Document and page numbers help the user to browse through the different documents available. The user will type C to continue and is able to scan documents by using their document numbers.

Each document will include information about the Institution which has contributed to a particular translation. This information is displayed in the BE field:

ACH=Switzerland BTM=Montreal
 MBZ=The Hague AGO=Agfa Gevaert
 BTP=Parliament TAI=Brussels and Luxembourg BTB=Brussels
 BTO=Quebec BTL=Luxembourg
 CT=Council of Ministers.

Entries in the Eurodicautom database are classified according to the reliability of the translation. Terms and abbreviations range on a scale from 0 to 5 (0 being the lowest, 5 being the official translation). This classification system is displayed in the CF field.

The CM field indicates under which subject the term or abbreviation has been classified. Typing "S" at the * prompt which appears on your screen will cause the system to sort all documents automatically so that all those selected according to the codes specified will appear first on your screen. The codes include, amongst others: agriculture, medicine, domestic economy and telecommunications. (A complete list is featured in the Eurodicautom technical sheet which can be obtained from the ECHO help desk.) The RF section of the documents indicates the source from which the terminological information was taken and, last but not least, DF gives the definition of the Vedette (headword).

Further search hints

If the system does not find a document which matches your request it will ask the user if he/she would like to truncate the search. (In other words, it will ask if the word for which a translation is required could be used as a possible stem for the search.) To do this, simply type the command T at the * prompt (please see example below – user input is shown in bold).

*q vide

SORRY, NO ANSWER. PRESS T FOR TRUNCATION OR GIVE ANOTHER COMMAND

*T

DOC = 1 PAGE = 1 BE= BTL
 TY= NEO93 NI= 1800009 DATE = 931004 CF= 2 CM OO9
 EN VE video
 RF arrete du 3/10/84 portant enrichissement du voc. des telecommunications, JORF 10/11/84
 FR VE video
 DF qualifie ou designe des applications ou des appareils relatifs a la formation, l'enregistrement, le traitement ou la transmission d'images de television ou d'images analogues, ou de signaux occupant une largeur de bande comparable
 RF arrete du 3/10/84 portant enrichissement du voc. des telecommunications, JORF 10/11/84
 NT DOM: techniques de telecommunications; USG: terme d'usage obligatoire

PRESS C TO CONTINUE OR GIVE ANOTHER COMMAND

Articles and prepositions as significant words

The database also provides users with the opportunity to specify that the article or preposition for which they are searching should be treated as a significant term in its own context. In order to prompt the system to do this, simply type the asterisk sign (*) immediately after the term, as in the example below. (User input is shown in bold.)

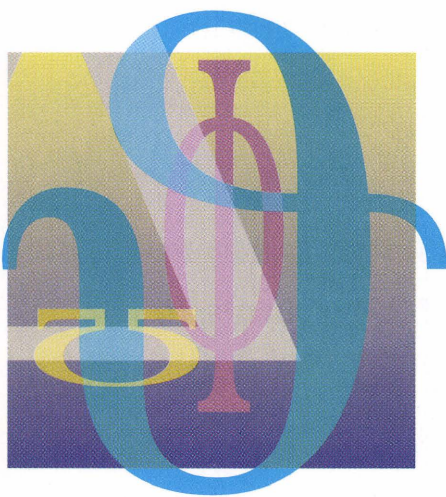
q on line

DOC = 1 PAGE = 1
 BE= BTL TY= NEO93 NI= 0900001
 DATE = 931004 CF= 2
 CM AUM
 EN VE on-line
 RF arrete du 22/12/81 relatif a l'enrichissement du voc. de l'informatique, JORF 17/01/82
 FR VE en ligne
 DF se dit d'un materiel lorsqu'il fon-

ctionne en relation directe avec un autre
RF arrete du 22/12/81 relatif a l'enrichissement du voc.de l'informatique, JORF 17/01/82
NT DOM:informatique;USG:terme d'usage obligatoire;GRM:locution adjectivale
PRESS C TO CONTINUE OR GIVE ANOTHER COMMAND

To end the search session type "E" at the asterisk prompt

NOTE:
The examples shown above have been taken directly from the on-line database using non-rich Latin characters.



Accessing the database in Greek or rich Latin characters

For over three years users have been able to access Eurodicautom using the Greek language and rich Latin characters. In order to access the database in this way certain parameters must be respected.

The alphabet used

The Greek version of the Eurodicautom database follows the ISO 8859-7 standard (also known as ELOT 928). This standard is composed of the rich Greek characters (i.e. those containing accents) and the non-rich Latin characters (i.e. those not containing accents).

Equipment necessary for Greek access

The terminal used must be able to offer and accept Greek characters, and must preferably follow the standards defined by the ISO 8859-7 standard or the equivalent ELOT 928. If it is not possible to obtain the wide range of

characters which are available using ISO 8859-7, the user can make use of the numerous telecommunications programs existing on the market in the form of "conversion tables". These tables make it possible for the ISO 8859-7 characters to be converted to the internal codes of the user's terminal.

Equipment necessary for rich Latin access

The databases hosted on ECHO and implemented with accentuated Latin characters follow the ISO 8859-1 standard. This standard allows rich Latin characters (i.e. those containing accents) and non-rich Latin characters (i.e. those not containing accents) to be used.

Accessing Eurodicautom

Greek language access:
NUA +270442124
Rich Latin access: NUA +270442125

In order to access using the Greek language or rich Latin characters your terminal should be set to the following:

- 8 DATABITS
- NO PARITY
- 1 STOP BIT
- FULL DUPLEX
- THE SPEED DEPENDS ON THE MODEM USED

If your communication settings do not allow for either of the access possibilities mentioned above you may still access Eurodicautom by setting your equipment to the following:

7 bit access: NUA +270448112

- 7 DATABITS
- EVEN PARITY
- 1 STOP BIT
- FULL DUPLEX
- THE SPEED DEPENDS ON THE MODEM USED.

If you have any queries regarding any of the information mentioned in this article, please do not hesitate to contact the ECHO help desk:

Tel.: +352-34981-200
Fax: +352-34981-234.

Further details on the specific content of the Eurodicautom database can be obtained from:

Mr Alain Reichling
Commission des Communautés européennes
SdT/Terminologie
Bâtiment Jean Monnet - A2/129
L-2920 Luxembourg.

Tel.: +352-4301-32335
Telex: 3423 COMEUR LU.

Corsi di formazione in Italia

Nel quadro delle attività di sensibilizzazione per il programma IMPACT, ECHO sta organizzando in collaborazione con l'ENEA, National Awareness Partner in Italia, dei corsi di addestramento all'uso del linguaggio di interrogazione CCL per utenti principianti. Il seminario dura due giorni e permette ai partecipanti di allenarsi ad interrogare basi dati in linea. Il programma provvisorio è il seguente :

Prima giornata :

1. I requisiti per il collegamento in linea
2. L'informazione elettronica : l'azione comunitaria
3. I servizi comunitari d'informazione
4. Il programma IMPACT
5. Le principali basi dati di ECHO
6. Dimostrazione di alcune basi dati
7. I principali comandi del CCL
8. Prime esercitazioni

Seconda giornata :

1. La base dati TED (Tenders Electronic Daily) : tutti i bandi di gara per appalti pubblici in Europa e nei paesi del GATT
2. Le basi dati sulla ricerca e lo sviluppo : CORDIS
3. Revisione ed approfondimento dei comandi CCL
4. Esercitazioni
5. Risposte alle domande dei partecipanti.

I due prossimi seminari avranno luogo :

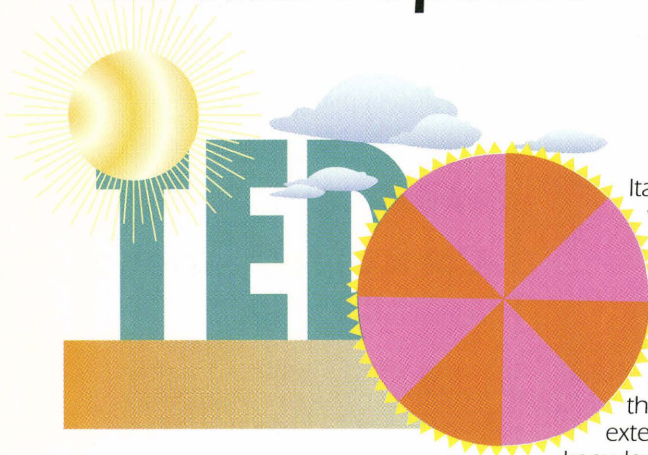
- BARI, 7-8 giugno
- ROMA, 13-14 giugno

Se siete interessati a partecipare ad un corso, vi preghiamo di rivolgervi a :

Dott. Massimo Gazzotti
ENEA
Viale G. Ercolani, 8
40138 Bologna

Tel : 051-6098 197.
Fax: 051-6098 255

TED Alert update



Italy, Portugal and Spain, where coverage is currently low.

Commercial Agents have to provide a service where they can set up a search profile for their clients, thus they are expected to have extensive experience and

knowledge of using TED on ECHO – both in terms of using the retrieval language as well as the contents and the area of public procurement in general.

To obtain a list of Commercial Agents please contact:

ECHO
B.P. 2373
L-1023 Luxembourg

Tel.: +352-34981-200
Fax: +352-34981-234.

Call Tedusage

A new on-line command "Call Tedusage" has recently been implemented in the database. This command allows users to obtain their user statistics at any time during their database search when using the CCL. The command may also be used whilst searching in other ECHO databases.

Once the command "Call Tedusage" has been entered the system amasses the statistics required. A table listing the following will be displayed:

- Session date (from/to)
- Connect time
- The number of complete documents viewed
- The number of free documents viewed
- Number of accesses.

The system will then ask the user if it is required to provide further details on the sessions and will also provide the option to continue with the CCL. (Please note that statistics for the months commencing 1 January 1994 can be obtained.) The Office for Official Publications will continue to send a monthly statement, including an invoice, to each user. However, Call Tedusage is an ideal tool which allows

users to monitor exactly how frequently the TED database is being used and allows them to keep track of the particular dates the database is accessed.

F PDLAST=\$

Users who have saved and execute the same search string on a regular basis will be pleased to know that a new command has been introduced for TED which will allow them to further automate their searches.

Typing F PDLAST=\$ will prompt the system to search for the very last day of publication, which means that users no longer have to alter the date of publication each time they want to look for current documents.

Further information regarding the above can be obtained from the ECHO help desk (see address opposite).

As already reported in ECHO Facts for Users, the TED Alert Service, which is the fax or telex document delivery service from TED, has recently been undergoing organisational changes designed to bring the service closer to potential clients. The service, which was originally operated by ECHO whilst it was under test, allows the personalised and confidential storage of a search 'profile' for all registered clients. Each time TED is up-dated, the profiles are matched against new entries in the database and, whenever there is a new notice which meets the criteria of a client, it will be sent by fax or telex directly from the ECHO host.

Commercial Agents have been appointed with the approval of the Office for Official Publications of the EC (EUR-OP) and it is hoped that a network will be established which will provide overall geographic and sectoral coverage throughout the EU and in other countries where there is a demand. The spread of agents per country as of March 1994 is as follows:

EU countries:	Non-EU countries:
Denmark: 2	Cyprus: 1
France: 1	Finland: 1
Germany: 6	Israel: 1
Greece: 2	Norway: 1
Ireland: 1	Sweden: 2.
Italy: 2	
Luxembourg: 1	
Netherlands: 2	
Spain: 1	
UK: 8	

Commercial Agents are not restricted to being active in their own countries, but it is hoped that more agents will be established in countries such as France,

NUI: nouvelle adresse!

Une nouvelle procédure de connexion en France

Depuis le 1er janvier 1994, la commercialisation des NUI (Network User Identifier) n'est plus assurée par France Télécom Réseaux et Services Internationaux – Intelcomfrance – mais directement par France Télécom TRANSPAC.

Les demandeurs de NUI doivent s'adresser en fonction de leur lieu de résidence auprès de l'agence régionale de Transpac (Bordeaux, Lille, Lyon, Marseille, Nancy, Rennes). Pour votre information, nous vous donnons les coordonnées à Paris:

Direction commerciale de TRANSPAC
Immeuble Galliéni
8, Place du Maréchal Juin
92136 Issy-les-Moulineaux Cédex

Téléphone: +33-1-46-48-15-15
Télécopie: +33-1-46-48-16-16.

Quant à la procédure pour appeler un serveur hors de la France, des changements sont également intervenus; la nouvelle procédure (pour les détenteurs de nouveaux NUI) est la suivante:

N<NUI><NUA>

A base de dados IMPACT/ECHO no videotexto em Portugal

A base de dados IMPACT/ECHO, uma série de páginas de informação, está agora disponível para todos os utilizadores portugueses. As páginas são 150, escritas em português, e fornecem informação sobre a estrutura e actividades da DG XIII (Telecomunicações, Mercado da Informação e Valorização da Investigação), programas relacionados com as Tecnologias de Informação no âmbito da Comissão das Comunidades Europeias, acontecimentos importantes e muito mais.

Para aceder a este serviço os utilizadores deverão ter em conta o seguinte:

Acesso nacional

Emulação: CEPT 1 (BTX)
Parâmetros de comunicação: 8 bits, no parity, 1 stop bit
Tel.: (067) 199 ou (067) 198 para o acesso tipo quiosque

Quando aparecer no ecrã o prompt "ter?" digite "4"

É necessário utilizar a password "INFOECHO"

Acesso internacional

A emulação e os parâmetros de comunicação são os indicados anteriormente. No entanto, deve-se utilizar o seguinte número de telefone:

+351-1-525788/527837.

É necessário uma password, que é fornecida, pelo serviço, a cada utilizador individualmente. Após a introdução desta password digite "INFOECHO"

Um folheto com informação detalhada sobre as páginas do videotexto está disponível através do serviço de apoio do ECHO. No entanto, para mais informação sobre o sistema contacte:

TELEPAC
Rua António Loureiro Borges, N° 1
Arquiparque - Miraflores
1495 ALGÉS

Contacto: Falhusca Dias

Tel.: +351-1-790 70 00
Fax: +351-1-790 72 25.

Informação sobre o programa IMPACT e sobre o ECHO em geral pode ser obtida no:

INETI (Instituto Nacional de Engenharia e Tecnologia Industrial)
Centro de Informação Técnica para a Indústria
Estrada do Paço do Lumiar
Edifício A
1699 LISBOA CODEX

Contacto:
Doutora Ana Maria Ramalho Correia

Tel.: +351-1-716 51 41
Fax: +351-1-716 47 32

IMPACT CENTRAL OFFICE
DG XIII/E
Bâtiment Jean Monnet
L-2920 Luxembourg

Tel.: +352-34981-222
Fax: +352-4301-32847

Portuguese videotex now hosting IMPACT/ECHO database

The IMPACT/ECHO database, a series of information "frames", is now available to all Portuguese users. The frames consist of some 150 pages of information, written in the Portuguese language, which provide information on the structure and activities of DG XIII (Telecommunications, Information Market and Exploitation of Research), IT-related programmes within the Commission of the European Communities, important events and much more.

In order to access the service users should note the following:

National Access

Emulation: CEPT 1 (BTX)
Communication parameters: 8 bits, no parity, 1 stop bit
Tel.: (067)199 or (067) 198 for kiosk access.

When the "ter?" prompt appears on the screen type "4"

The password "INFOECHO" must be used.

International Access

The emulation and communication parameters are the same as given above. However, the following telephone number should be used:

+351-1-525788/527837.

A password is required which is issued individually to the users by the service.

Once this password has been entered, type "INFOECHO" as above.

A leaflet detailing the information which can be found on the pages is available from the ECHO help desk. However, if you require further information on the system please contact:

TELEPAC
Rua António Loureiro Borges, N° 1
Arquiparque - Miraflores
1495 ALGÉS

Contact: Falhusca Dias

Tel.: +351-1-790 70 00
Fax: +351-1-790 72 25.

Further information on IMPACT and ECHO in general can be obtained from:

INETI (Instituto Nacional de Engenharia e Tecnologia Industrial)
Centro de Informação Técnica para a Indústria
Estrada do Paço do Lumiar
Edifício A
1699 LISBOA CODEX

Contact:
Dr Ana Maria Ramalho Correia

Tel.: +351-1-716 51 41
Fax: +351-1-716 47 32.

IMPACT CENTRAL OFFICE
DG XIII/E
Bâtiment Jean Monnet
L-2920 Luxembourg

Tel.: +352-34981-222
Fax: +352-4301-32847.

New operator for IMPACT/ECHO videotex

Irish videotex users will be interested to note that the IMPACT/ECHO database is now hosted on the Amdex Minitel bureau. Amdex Systems are an authorised Minitel service bureau in Ireland. Amdex are also travel technology specialists and market a range of reservation systems, back office systems, CRS (Computerised Reservation Systems) connectivity products and databases to the travel industry in Ireland and overseas.

The IMPACT/ECHO database is available in Ireland on the Minitel network.

Users can access the service from a Minitel terminal or from a PC running suitable emulation software. Once logged on to Minitel, users enter the service by typing the service code "ECHO" followed by SEND. The ECHO main menu will then be displayed. To move around the service, users simply select from the choice of options or keywords from the list displayed. The service includes a facility enabling users to connect directly to the ECHO host in Luxembourg by typing "CONNECT" followed by SEND. Once connected, users will be asked to enter the ECHO public password or their own password which will enable them to access the following databases:

CCL-TRAIN
I'M GUIDE
NEWS ON-LINE
I&T MAGAZINE
UNESBIB.

Users will also be able to access the ECHO mailbox.

For further information on the IMPACT/ECHO videotex pages please contact:

ECHO
B.P. 2373
L-1023 Luxembourg

Tel.: +352-34981-200
Fax: +352-34981-234.

Further information on Amdex Systems can be obtained directly from:

Amdex Systems Limited
IDA Business Centre
IDA Tallaght Business Park
Whitestown
Dublin 24
Ireland

Contact: Quintin Scally

Tel.: +353-1-4599491
Fax: +353-1-4590395.

I'M Guide: Deutsche Menüversion in BTX!

Bereits seit mehreren Jahren stellt ECHO ca. 150 Informationsseiten über IMPACT und ECHO über die nationalen Videotex Systeme zur Verfügung. Dieser Service enthält Informationen zu vier Bereichen:

- Glossar (Begriffserklärungen zum Bereich Fachinformation)
- Allgemeines (Informationen zu den

Institutionen der EU und zu ECHO)

- Programme (Informationen zu Programmen der EU im Bereich Fachinformation)
- Datenbanken (Informationen über wichtige Datenbanken zur EU).

Diese Informationen werden selbstverständlich auch weiterhin zur Verfügung gestellt. Darüber hinaus erweitert ECHO sein Angebot im deutschen Bildschirmtext um einen interessanten Dienst:

Mit I'M Guide wird ab Mai 1994 zum ersten Mal eine ECHO Datenbank in einer menügeführten Version in BTX angeboten.

Warum I'M Guide?

Als "Datenbank der Datenbanken" bietet I'M Guide wertvolle Informationen über elektronische Informationsprodukte und -dienste, die in Europa zur Verfügung stehen. Mit derzeit über 8 000 Einträgen zu Datenbanken, Organisationen und Informationsvermittlern handelt es sich bei I'M Guide um den umfangreichsten Leitfaden zum Europäischen Markt für Informationsdienste.

Warum Menüversion?

Bisher war I'M Guide in BTX nur mit Hilfe der Befehlssprache CCL recherchierbar. Um die Benutzerfreundlichkeit zu erhöhen und auch CCL-unerfahrenen Benutzern den Zugang zu I'M Guide zu erleichtern, wurde eine Menüoberfläche in deutscher Sprache entwickelt. Der Benutzer wählt einfach die Optionen aus, die ihn interessieren und erhält die gewünschten Informationen.

Der Zugang zur Datenbank erfolgt über *33255# bzw. über *ECHO-KEG. Über das ECHO Hauptmenü gelangen Sie anschließend zu den deutschen Menüs von I'M Guide.

I'M Guide: German menu version soon available on BTX!

For some years now around 150 "frames" of information regarding IMPACT and ECHO have been implemented on national videotex systems. These pages of information, available on BTX, will soon be supplemented by a new service.

ECHO is pleased to announce that I'M Guide is to be its first menu driven database available on BTX (as of May 1994).

Why I'M Guide?

As a "database of databases" I'M Guide provides valuable data on information products and services available in Europe. Containing more than 8 000 references, I'M Guide is the most comprehensive guide to the European electronic information services market!

Why menu driven?

Until now the I'M Guide database on BTX was only searchable using the CCL (Common Command Language). In order to enhance user friendliness and thus help users who are not familiar with the CCL, ECHO has developed a menu driven interface in the German language. All you have to do is to answer the questions the system asks and you will obtain the information required.

The database can be accessed using *33255# or *ECHO-KEG. The ECHO main menu will then guide you to the German menus.

Le 3619 ECHO est arrivé...

ECHO, le centre serveur de la Commission, est avant tout un serveur expérimental où sont testées non seulement les nouvelles technologies de l'information (par exemple l'interrogation multilingue d'une base de données en texte intégral, le service audiotex Max,...) mais également les bases de données produites par plusieurs Directions générales de la Commission européenne. C'est à ce titre qu'en 1988, ont été mises en oeuvre les bases de données pour être interrogeables sur le vidéotex.

Tout d'abord ce fut sur le 3613 avec un mot de passe (NUI) décerné par Intelcomfrance puis sur un minitel B sans NUI.

Pour faciliter l'accès des utilisateurs minitel et les sensibiliser davantage aux services d'information offerts par la Commission européenne, sera ouvert en mai 1994 le 3619.

Que vous offre le 3619 ? Un accès aux services télématiques étrangers par le kiosque Télétel international. ECHO est directement accessible à partir du

3619, sur MINITEL B (bi-standard). Il suffit d'entrer le code de service ECHO. Sur la page d'accueil vous sera proposé le choix entre quatre options:

1. INFO- Présentation des services d'information européens.

Ce sont les pages d'information diffusées sur tous les terminaux vidéotex existant dans les pays-membres (ex.: sous PRESTEL en Grande-Bretagne, sous BTX en Allemagne etc..) Le menu principal présente neuf rubriques, à savoir:

- Nouvelles du Marché européen de l'information
- Introduction à l'utilisation de l'information électronique
- ECHO (European Commission Host Organisation)
- Adresses utiles en France
- Courrier électronique - Service de commande de documents
- Les services vidéotex concernant l'Europe
- Les services vidéotex offerts par la Commission européenne
- Mots-clés A - Z
- Producteur.

2. BDD- Bases de données I'M GUIDE, EUREKA...

Vous êtes sur le serveur ECHO et le menu vous donne le choix d'interroger gratuitement les bases de données I'M (Information Market) Guide, EUREKA.

3. SII- Services d'Information IMPACT

Sept rubriques peuvent être consultées en anglais actuellement et dans d'autres langues ultérieurement

- IMPACT in brief (an introduction to the IMPACT programme)
- IMPACT News
- IMPACT Contact Points
- IMPACT Projects
- IMPACT Documentation
- IMPACT Document List and Document Ordering Service
- IMPACT electronic mailbox facility.

4. BDCT- Bases de données avec accord d'utilisation CORDIS et TED (pour les utiliser contacter ECHO: 05906956: n°. vert)

Pour accéder à ces bases de données vous devrez remplir un accord d'utilisation et annexe.

Pourquoi ?

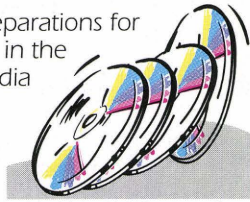
- pour les statistiques de CORDIS
- pour la facturation de la base TED,

version en-ligne du "supplément S" du JOCE sur les appels d'offre publics; en effet l'interrogation en-ligne coûte 60 écus + 0.8 écus par document en texte intégral (1 écu = 6.63 FF, 04/94).

Pour information, il existe également TED ALERT (TED par fax).

Call for proposals for exploratory actions in multimedia publishing

As part of its preparations for further activities in the area of multimedia publishing, the Commission of the European Communities is inviting proposals on the subjects of electronic publishing, information dissemination and information retrieval.



Task:

Feasibility projects in the area of multimedia publishing/information engineering concerned with improving the usability of information through better methods for the design, creation, dissemination and access to integrated multimedia information services. Projects will be supported that test the feasibility of pilot applications built around identified user requirements, and will address the research objectives in the three main stages in the information chain:

Electronic publishing:

To improve the methods for authors and publishers to capture and manage information so that it can be delivered to users in a form that matches their requirements. To demonstrate the application of advanced techniques for the creation of information products that are independent of a specific technology base, that can be smoothly integrated into existing user environments and that add value in comparison with existing products.

Information dissemination:

To develop and validate new approaches from the information providers to aid the user in finding and accessing information without prior knowledge of the origin, location or format of the information. To develop advanced database systems supporting

different media that are easily connectable to open information environments. To develop methods to improve the transactional basis for obtaining information, so that the information owner and user have an economic relationship where pricing and obligations are clear and intellectual property rights are protected.

Information retrieval:

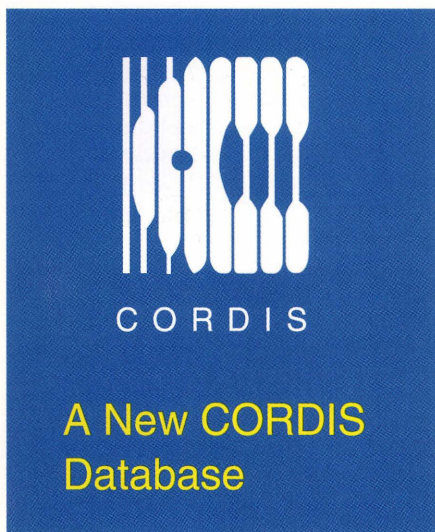
To develop advanced techniques to improve the user's ability to retrieve and display information, to interact with the open information environment, to import information into the local environment. To develop systems that enable the user to make better use of the information available. To develop and validate consistent measures of usability and suitability of interfaces and access methods. Feasibility projects established with this call will address the following tasks:

- specify and justify the goals and intended results;
- identify the user communities involved;
- identify the research tasks;
- identify the infrastructure and information service requirements and how they would be met;
- specify the organization needs;
- identify the extent to which existing products and facilities can be used and the results from other research programmes that can be used.

Selected feasibility projects will be supported on a shared-cost basis by the European Commission, depending on the task, subject to a maximum contribution of 100 000 ECU per project, and should not exceed six months' duration. Consortia organisations and individuals established and resident in the European Economic Area are invited to submit one or more proposals on the above topic.

Intending proposers must apply in writing to the Commission's services for an information package containing background material on the research objectives and example pilot applications and detailed information about the procedures and forms required for the submission of proposals and the contract that will be established with successful proposers. All correspondence regarding the call and all proposals should be addressed to:

European Commission, DG XIII, Directorate E, JMO C 4/024, L-2920 Luxembourg, facsimile (352) 4301-32847. Proposals must arrive at the Commission by 15. 6. 1994 (17.00).



The new CORDIS RTD-Contacts Database is now operating on the ECHO host.

This database enables you to identify people throughout Europe who can provide you with information and advice on matters associated with European Research and Technological Development.

Typically, the individuals listed are individuals within the European Commission and other European institutions. These are people who are responsible for developing Community RTD Policies and for the day to day management of individual programmes. They also include national representatives on programme steering committees, and nominated contacts for EU programmes at national level.

Other contacts covered include those for various EU information points, networks and other support mechanisms. They include Commission RTD help desks, programme information points, VALUE Relay Centres, CORDIS Correspondents, IMPACT National Awareness Partners, Euro Info Centres, and members of SPRINT Networks. Certain non-EU contacts are also listed such as national contacts for EUREKA, COST, and the European Space Agency.

This is an immensely practical database. It enables users to locate contacts in their own area, who have the right type of technical expertise, and those who can provide help with administrative matters.

Within the database full information is provided, including the contact's name, position, organisation, postal address, telephone, facsimile and telex numbers and other supporting information.

The RTD-Contacts Database will be available via the CORDIS Menu System towards the end of May, and it will be incorporated in edition III 1994 of the CORDIS CD-ROM.

■ **Searching** ■

The RTD-Contacts Database is similar to the other CORDIS databases and can be searched using similar techniques.

One of the most useful searches for a new user is to use the Common Command Language DISPLAY command to view the contents of the Category (CAT). An appropriate contact organisation category can then be selected from the list displayed. The category selected can then be used as a search term in conjunction with either a country in the Country field, or a region in the Region field. Such searches should return contacts with the relevant expertise and geographical focus.

■ **A Typical Search** ■

A search of this type using the Boolean AND is shown below.

Command	Explanation
BASE CONT	Enter the RTD-Contacts Database
D CAT=\$	View the contents of the Category field

Command	Explanation
F CAT=ENC-CCS and CNY=FR	Search for records containing the code ENC-CCS (CORDIS Correspondents) in the Category (CAT) field and the code FR (France) in the Country (CNY) field
S F=GCON	View field group GCON. This group provides full details of the contact identified in the search
MORE	Press Enter at the preset MORE prompt to view the remainder of the record
STOP	Exit from the ECHO Host

■ **Using the DISPLAY Command with the Category Field** ■

The Category field is a coded field, and the code is a hierarchical code with two levels and the DISPLAY command can be used to view the codes with their text expansions. A useful trick with this database is to use the DISPLAY command with the \$ character to view either all the codes under a level one code heading, or to view all the occurrences of a level two code. Examples of this are given in the table below.

Command	Explanation
D CAT=\$	Displays all the codes in the Category field, for example:
D CAT=\$	1.01 206 ECP ... EC Programmes - CEC Contacts
	1.02 24 ECP-ENO ... EC National Offices
	1.03 33 ECP-EUP ... European Parliament
	1.04 4 ECP-EUS ... EUROSTAT
	1.05 92 ECP-JRC ... EC Joint Research Centres
	1.06 13 ECP-RIP ... RTD Information Points
	1.07 40 ECP-RPM ... RTD Programme Managers
	MORE
D CAT=ENC\$	Displays all level two codes under the level one ENC code heading, for example:
D CAT=ENC\$	1.01 1335 ENC ... EC Programmes - National Contacts
	1.02 32 ENC-CCS ... CORDIS Correspondents
	1.03 222 ENC-EIC ... EuroInfo Centres
	1.04 18 ENC-NAP ... ECHO National Awareness Partners
	1.05 80 ENC-OET ... Organisations for the Promotion of Energy Technologies (OPETs)
	1.06 360 ENC-PCP ... Programme National Contact Points
	1.07 594 ENC-PSC ... Programme Steering Committees
	1.08 29 ENC-VRC ... VALUE Relay Centres
	****END OF DISPLAY****
D CAT=\$CCS	Displays all occurrences of the level two CCS code, for example:
D CAT=\$CCS	1.01 32 ENC-CCS ... CORDIS Correspondents
	****END OF DISPLAY****

■ Info-files Replaced ■

Now that all CORDIS contacts such as VALUE Relay Centres are included in the RTD-Contacts Database the info-files containing these contacts will be removed from the system. There will, however, be an overlap period while everyone becomes familiar with the new system.

■ Info-files ■

Full details of the RTD-Contacts Database are available in the following on-line info-files.

- INFO CNCONT A description of the database
- INFO CNFIELDS Details of the fields in the database
- INFO CNCAT Codes used in the Category field. In addition to the codes and their text expansions this info-file includes a description of each category listed
- INFO CNEXAMPLES Search techniques
- INFO CYCODES Country codes for Europe, used in the CNY field
- INFO ISOALL ISO Two-letter country codes worldwide, used in the CNY field
- INFO NUTSCODES Region codes for community countries, used in the Region field
- INFO REGCODES ISO region codes for EFTA countries, used in the Region field
- INFO SIC CORDIS Subject Index Codes, used in the Subject Index Codes field.

Fields in the RTD-Contacts Database

The following table lists all the fields in the database and provides examples of field entries and of CCL FIND and DISPLAY command usage.

Field label/Field Name	Field Content	CCL Field Type
ADR /Address	The postal or street address for the contact	Free-text & Direct
CAT/Category	The category of the contact organization	Free-text on text
CIT/City	The city or town for the contact's address	Free-text & Direct
CNM/Contact Name	The name of the contact person	Free-text & Direct
CNY/Country	The country of the contact person's organization	Free-text on text
DEP/Department	The contact person's department	Free-text & Direct
FAX/Fax	The fax number for the contact	Show only
FNC/Function	A description of the contact's working role	Free-text & Direct
GEN/General Information	Supporting information	Free-text
MBX/Electronic Mailbox	The electronic mailbox number for the contact	Show only
ODS/Organization Designation	The designation of the organization	Free-text & Direct
ORG/Organization	The name of the organization	Free-text & Direct
PGA/Programme Acronym	Acronyms identifying any programmes in which the organization has participated	Free-text & Direct
POC/Postcode	The contact person's postcode	Show only
POS/Position	The contact person's position	Show only
OVD/Quality Validation Date	The date that the information was checked prior to loading on the host	Date
RCN/Record Control Number	A unique reference number for each record	Direct
REG/Region	The region covered by the contact person's organization	Free-text on text
SIC/Subject Index Codes	The CORDIS Subject Index Codes	Free-text on text
TEL/Telephone	The telephone number for the contact person	Show only
TLX/Telex	The telex number for the contact person	Show only
UPD/Update Date	The date the record was entered on to, or updated on the host	Date



I am interested in receiving information on

CORDIS ON-LINE DATABASES

CORDIS DATABASES ON CD-ROM

Name

Organisation/Company

Address

City

Country

Are you an ECHO user? If so, please provide your User Reg. No. 000

ECHO/CORDIS Customer Service, B.P. 2373, L-1023 Luxembourg.
CORDIS-L fax (+352) 34 98 1248

Results of the Call for Declarations of Intent

The Call for Declarations of Intent published on 1 October 1993 (O.J. C266) has aroused substantial interest from the information market. Four hundred and forty eight responses with project ideas have now been registered and the Commission is analysing these with a view primarily to defining the scope and conditions for a Call for Proposals for projects to develop new information services.

The countries of origin of the responses are shown in the following table:

Country	Number
Belgium	16
Denmark	20
Finland	4
France	38
Germany	49
Greece	34
Italy	93
Ireland	14
Liechtenstein	1
Luxembourg	2
Norway	13
Netherlands	45
Portugal	12
Spain	31
Sweden	14
United Kingdom	62
Total	448

Some 95 different subjects were mentioned by respondents. The largest focus was on business information, including agriculture, manufacturing, trading, directories, standards, markets, safety, just-in-time delivery, etc. Overlapping this focus to a large extent was the theme of electronic publishing in a broad sense, addressing in a few cases consumer markets with cultural, civic and retailing information but also covering archives and specialist publishing including scientific and technical information. Overall, the majority of responses support the view that the management, quality and speed of information are key factors in the search for competitiveness in business and industry.

The Commission will continue to examine the responses to the call in parallel with the orientations that are expected to result from the work of the high level group of prominent persons designated by the Council and the

Commission to study the specific measures to be taken into consideration as a result of the CORFU summit at the end of June concerning the White Paper on Growth, Competitiveness and Employment. Subject to a sufficient budget being made available for 1995 for project support, it now seems likely that a call for proposals will be published in the Official Journal on 15 September 1994, with a closing date of 15 December 1994. Further details of this call will be announced when the scope and conditions have been decided.

Information regarding the call in general may be obtained from:

Mr G. Fraser
CEC, DG XIII/E
L-2920 Luxembourg

Tel.: +352-4301-32869
Fax: +352-4301-32847.

Easier access to UNESCO databases

Throughout the latter half of 1993 the trilogy of UNESCO databases hosted on ECHO were announced in ECHO Facts for Users. To date, the three databases (UNESBIB, DARE and INDEX TRANSLATIONUM) were only available in the CCL (Common Command Language) mode. However, work on the databases is progressing fast and ECHO is pleased to announce that they are all now available via a series of user friendly menu screens, meaning once again that the user can obtain information without having knowledge of the CCL.

The three UNESCO databases are:

- UNESBIB: A bibliography of UNESCO documents and publications (50 000 references);
- DARE: International referral database in social sciences (10 000 records), and
- Index Translationum: International bibliography of translated books in all domains (600 000 references).

Accessing the UNESCO databases could not be easier. Users simply logon to ECHO in the usual way and select the databases from the main menu screen. The UNESBIB database is to be found under option 3 of the main ECHO menu (Scientific and R&D databases) while DARE is to be found

under option 2 (User guidance) and Index Translationum under option 5 (Language Industry). After choosing one UNESCO database and selecting the option "menu version" the user is then presented with a short description of each database and an opening menu guides him/her in the various possibilities available in the database.

The user is then guided step by step until the search results are displayed. ECHO and UNESCO hope that this menu version will facilitate user access and we welcome comments or suggestions about the quality of the databases and their formatting from ECHO users. To this end, an on-line questionnaire is soon to be implemented on ECHO which provides users with the opportunity to comment on all aspects of the databases. The first hundred respondents to the on-line questionnaire will be offered a UNESCO database directory or a CD-ROM!

If you have any further queries on any aspect of this article please contact:

ECHO help desk
B.P. 2373
L-1023 Luxembourg.

Tel.: +352-34981-200
Fax: +352-34981-234.

CCL training courses in your country

If you have an urgent need to attend a CCL training course, but have found that to date none have been scheduled in your country, the CST (operating the ECHO host) will be happy to organise courses on request which will be held in Luxembourg.

Once interest has been established the dates will be announced in the forthcoming issue of ECHO Facts for Users.

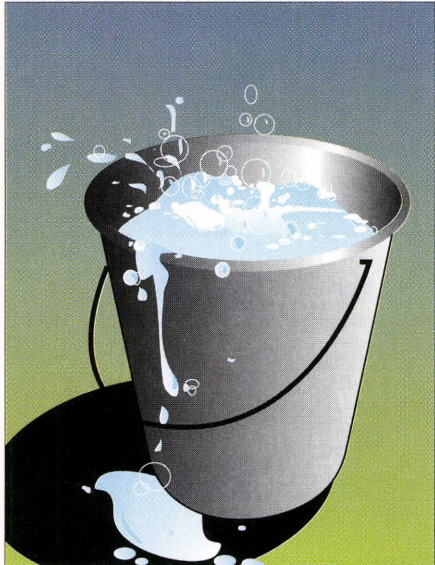
Please address all enquiries to:

ECHO/CST
B.P. 2373
L-1023 Luxembourg

Tel.: +352-34981-200
Fax: +352-34981-234.

NOTE:
When expressing interest, please state the language in which you would like the course to be conducted.

A spring clean for I'M Guide!



Data collection

Exhibitions and conferences provide all involved in the information market with the opportunity to discover exactly what changes and what innovative products have been produced by their peers.

The International On-line/CD-ROM exhibition held in London last December was no exception. As a result, the I'M Guide database, available free-of-charge on ECHO, has been undergoing a major review. To this end the producer of the database, the EIIA (European Information Industry Association) is now pleased to announce that the data collected during the aforementioned exhibition are now implemented on-line. This data review did not simply require new data to be added, but also amendments and alterations to be made, since producers and organisations present at the exhibition were also able to carry out "on-the-spot" checks to see whether information already in the database was indeed correct.

As regular users of the database and readers of ECHO Facts for Users will know, the EIIA does not simply use major events as its only means of receiving pertinent information. Data are collected and sent to the EIIA offices on a regular basis from its network of offices situated throughout

the Member States. Similarly, the EIIA subscribes to an exhaustive mailing list which means that it receives news regarding new products, organisations and the like as and when it is announced.

In order to avoid duplication of efforts between the secretariat of the EIIA in Luxembourg and its national partners throughout the Member States, a mechanism for data exchange has been defined. Each fortnight, the EIIA in Luxembourg sends each of its partners comprehensive information on all the records which have been modified or updated in any way.

What's new?

Dig deep into the I'M Guide and you will be pleasantly surprised at the range of subjects and products covered by the database.

Users involved in the area of medicine and scientific research may be interested to find that the I'M Guide includes information on an on-line database detailing the development status and the clinical use of pharmaceutical products available on the market. Similarly, information on a CD-ROM product entitled "EUROPHARM" may be of interest to those users who wish to find out which products exist in Europe regarding drug descriptions.

For the business minded, I'M Guide announces the existence of a product which explains how to "operate intelligently" in the European Union. "European Update", distributed by Faxon Europe, is a CD-ROM which includes reports of interest regarding economic policy, tax and legal issues and the like. Compass have produced directories available on-line and on CD-ROM regarding businesses in Europe and in the Asia/Pacific region, which are mentioned in I'M Guide.

Moving on to products of a bibliographic nature, "EI MECHDISC", produced by Engineering Intelligence has recently been included in the I'M Guide database. Distributed by Dialog Europe, Thomson Henry, Faxon Europe and Microinfo, "EI MECHDISC" gives comprehensive information on significant literature on mechanical and civil engineering.

I'M Guide does not limit itself to specific subject areas. For example, historians will find there is a multimedia CD-ROM product available giving details on the French Revolution ("Revolution", distributed by Faxon Europe). Enthusiasts of Charles Dickens' works will find that a CD-ROM has been produced which contains not only his complete works but short stories which are "hard to find" and literary criticism, colour illustrations and "voice overs".

Information of a geographical nature is also to be found in the I'M Guide. Details on "AREMM (Atlas en Réseau des Espaces Méditerranéens Multi-média)", a multimedia CD-ROM containing maps, photographs, texts and information on agriculture, food and commerce in the Mediterranean countries, has been recently included in the database.

Addresses and telephone numbers are provided for all information products, brokers and organisations mentioned in the database. However, I'M Guide is not a gateway to any of the services it contains and it is up to the user to contact the producer or distributor of the product which is of interest in order to receive further information.

Data growth

Statistically, the database is forever growing. The month of April ended with the database containing details on more than 5 000 products (including CD-ROMs, diskettes and the like). It is encouraging to see that a good percentage of the data is contributed by the Member States, with the United Kingdom contributing almost one fifth of the data followed by Germany, France and Italy.

Almost 2 500 organisations are listed in I'M Guide. Here, users can find out where and how to contact an organisation of interest and, just as important, what kind of products the organisation offers. Again, statistics show that the Member States are featured highly, with the largest data contributions again coming from the United Kingdom, Germany, Denmark and France.

Statistics for the broker section of the database are continuing on an upward trend. The highest number of information brokers listed in the database come from Germany, France and Spain.

Every effort is made to ensure that the data contained in the database are correct. If you have any suggestions to make regarding the data content, or

would like to place an entry in the database (this may be done free-of-charge) please contact the ECHO help desk.

ECHO
B. P. 2373
L-1023 Luxembourg

Tel.: +352-34981-200
Fax: +352-34981-234.

NOTE:

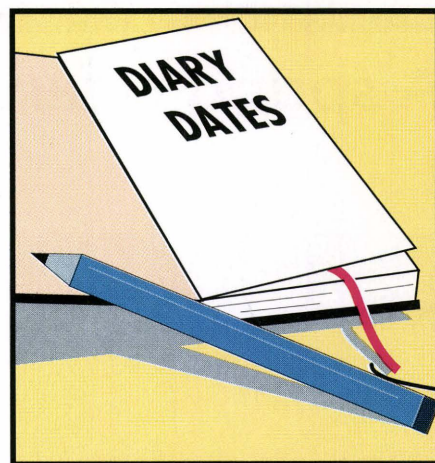
The products mentioned in this article are merely a cross-section of the information which has recently been added to the database. Many more subject areas than those mentioned are covered and interested users should contact the ECHO help desk (see above) to obtain a complete list of

descriptors and controlled terms (keywords) used in the I'M Guide.

Menu available for I'M Forum

ECHO is pleased to report that a menu version is soon to be available for the I'M Forum database. Scheduled to open at the beginning of June, the menu version will guide users around the database which now contains 1 000 entries.

If you require further information on I'M Forum, or would like to register your company details within the database, please contact ECHO.



ECHO will be represented at the following exhibitions during the course of 1994:

- | | |
|-----------|---|
| Frankfurt | INFOBASE
17-19/05/94 |
| Paris | IDT'94
31/05-02/06/94 |
| Brussels | EITC "European
Information Technology
Conference"
13-15/06/94. |

PLEASE NOTE:

Information on events organised by the VALUE Relay Centres (see ECHO Facts for Users issue 4/93) can be obtained on-line at ECHO via an information file. This file may be accessed by typing:

INFO VRC-EVENTS

at the '?' prompt when using the CCL. Further details on events organised by the VALUE Relay Centres may also be included in the CORDIS RTD-News database.

I would like to order the following videos:

ECHO short (without CCL) TED

ECHO long (with CCL) (cost price 15 Ecu)

Language: English format: VHS

French

German

Italian

Spanish

I would also like to receive the new ECHO Manual:
(cost price 10 Ecu)

English German

French Spanish

I would in addition like to order the CCL training diskette, format: 5 1/4" 3 1/2"
(cost price 15 Ecu)

.....(Lang.)

Name

Organisation

Street

City

Country

Payment must be made on receipt of an invoice from the Office for Official Publications
of the European Communities. Please return completed coupon to:
ECHO Customer Service P.O. Box 2373 L-1023 Luxembourg

2/94



ECHO Facts for Users is a Communication of the European Commission Host Organisation to its users.

A service provided by the Commission of the European Communities – DG XIII: Telecommunications, Information Market and Exploitation of Research.

Printed by: Merziger Druckerei
Merzig, Germany

Editor: Jane Sanderson

The views expressed do not necessarily reflect those of the Commission.

Catalogue no. EUR-OP
CD-AA-94-002-EN-C.

ECHO P.O. Box 2373
L-1023 Luxembourg

