

## Official unveiling of the World Wide Web to take place at the EC Information Sources and Services meeting

ECHO is pleased to invite all users to the EC Information Sources and Services Meeting, set to take place during the International On-line and CD-ROM exhibition in London this year.

The meeting is scheduled for Thursday 8 December 1994. Users in the United Kingdom and Ireland will have already received a letter of invitation. However, other interested users are welcome to register by contacting the ECHO help desk.

On the agenda this year will be presentations on the development of the IMPACT 2 programme, as well as the official unveiling of the new WWW (World Wide Web) server and the IDEA (Inter Institutional Directory of European Administrations) database. An update on the latest developments within the CORDIS service, EURO-OP/EUROBASES will also be provided.

The meeting will start at 9.30 a.m., at the Hilton Olympia, Battersea and Tower Rooms. Participants are requested to register from 8.30 a.m. (before the meeting commences). A buffet breakfast will be provided during registration. The meeting will close around midday.



### In this issue:

TED	pp. 5-7
CORDIS	pp. 8-10
I'M Guide	p. 11

## IMPACT WWW helps Europe to prepare for the global information



### Launch of I'M-Europe on the Internet

Recent European initiatives targeted towards creating employment opportunities have highlighted the importance of creating a Common Information Area and of ensuring a role for Europe in the global information society. One of the major challenges confronting us today, as the Communication of the Commission to the Council and European Parliament, COM (94) 347 of July 1994, highlighted, is the development of a stable information infrastructure, a global

information superhighway to ensure that information can be transmitted quickly and reliably in whatever formats are required.

In preparing Europe for the global information society, the need has been acknowledged for more pan-European information services and increased computer literacy, as well as greater awareness of the benefits of the new media. The IMPACT (Information Market Policy Actions) programme for the development of the European information market addresses such issues.



## European information goes global

To help European citizens and businesses – especially SMEs – understand more about the benefits of electronic information, the IMPACT programme has introduced various tools and methods to create increased awareness. In this context, DG XIII/E has recently decided to harness the power of the Internet by setting up I'M-EUROPE, a World Wide Web (WWW) server.

By joining the Internet, DG XIII/E will make its services available to some 30 million users and will exploit the potential of a medium which is undergoing rapid transformation from a 20th century academic tool to a 21st century public and corporate multimedia network. Plans to increase the Internet's ability to accommodate voice, video, broadcast and multimedia traffic are currently being discussed.

## The World Wide Web

WWW was developed at CERN in Geneva and is widely considered to represent the leading edge of Internet technology. It is a distributed information system which is based on the client server model. It consists of a collection of files, directories, images, video and sound recordings distributed throughout the Internet and connected with hypertext links.

WWW is built on a client server architecture and is based on a series of standard protocols:

- Uniform Resource Locators (URLs) which identify the location of an information object and the protocol needed to access it;
- Hypertext Mark-up Language (HTML) providing mechanisms for specifying the physical aspects of a document and its logical structure. HTML also offers facilities for specifying hypertext links to other documents on the web;
- Communication between servers and clients is controlled by the Hypertext Transfer Protocol (HTTP) which is fast, reliable and easy to implement and upgrade.

## Accessing and browsing the WWW

Browsers are client programs which have been designed to access HTML documents located on WWW servers throughout the Internet.

Two types of browsers are available:

- Line-based browsers offering text mode access only (e.g. Lynx and Emacs-W3);
- Graphical User Interface (GUI) based access, offering full graphical interface to WWW documents (e.g. Mosaic, WinWeb).

## Why WWW for I'M-EUROPE?

The very composition of the World Wide Web made it the ideal technology for use with I'M-EUROPE since it is secure, interactive, user-friendly and, of course, widely used.

I'M-EUROPE was conceived as an instrument to promote the development of the European electronic information market. It endeavours to serve the business and academic communities as well as the general public, not only offering its users a cost-effective information service covering all aspects of the European information industry, but also offering the opportunity to take an active part in the various projects and programmes funded by DG XIII. The server provides users of all backgrounds with a tool for keeping abreast with the EC's initiatives relating to the development of a European Information Market.

I'M-EUROPE offers its users a dynamic service, with contents and structure of the different parts regularly monitored in order to reflect the developments in the European information services market and the initiatives launched by DG XIII in response to those changes. It goes without saying that the technology underlying I'M-EUROPE will be developed to accommodate the changes affecting the Internet and releases of new WWW client and server software.

## Contents of I'M-EUROPE

### I'M-EUROPE home page



The main home page presents the user who accesses I'M-EUROPE with a list of all the services available from the server. Each item on the list is the hypertext link to a collection of documents and facilities that constitute the service in question. A link may be iconic or textual. Clicking on a given link invokes the service to which that link is connected.

The home page of I'M-EUROPE contains the following items:

- Information about the European Union
- European Community programmes related to the Information Market
- IMPACT
- ECHO
- CORDIS
- Directorate General XIII
- I'M-EUROPE mailbox
- I'M-Index
- Other resources on the World Wide Web

### Information about the European Union



This service offers the full texts of key EC publications. At present the Bangemann report, its follow-up (Communication of the

Commission to the Council and European Parliament), and the Maastricht treaty are available. The White Paper on Growth, Competitiveness and Employment is currently being dealt with. Users can navigate through the documents using tables of contents in which each entry is a hypertext link to the appropriate section of the document.

### European Community programmes related to the information market



On selecting this service, the user is presented with the names of 23 programmes. Clicking on a particular programme name displays a detailed description of that programme which includes:

- Full title
- Subject index codes
- Objectives
- Subdivisions
- Implementation schedule
- Relationships to other programmes
- Council decision date
- Key publications.

Information regarding the programme's start and finish dates, duration, status, funding, contract types, commission service, contact person and all the relevant Official Journal references is also included. Users are thus able to obtain up-to-the-minute information on the progress of the programmes that are of interest to them.



## IMPACT – The Information Market Policy Actions Programme



The IMPACT home page offers a comprehensive suite of services designed to support users who are or who wish to become actively involved in the IMPACT programme.

The services available are:

- A brief description of the programme. This description contains embedded hypertext links allowing users to move to the DG XIII page and to the description of the IMPACT 2 programme;
- The full text of the 1994 Call for Proposals (Information Services for Business and Industry) together with all the relevant background documents required to construct a proposal. Facilities available include an MS-DOS program to help in the preparation of proposals and a partner contact tool which prompts users to fill in their details on an on-line form for input to the I'M-FORUM database. In order to search I'M-FORUM to identify potential partners, a gateway from WWW to the CCL database available on ECHO is provided;
- Details of projects which resulted from previous calls for proposals in the areas of interactive multimedia and geographical information systems. Users are thus able to keep abreast of innovative activities under the auspices of IMPACT;
- A news service containing information on forthcoming events and announcements relating to the programme;
- Contact points for the Impact Central Office, the Impact Programme Committee members, the Legal Advisory Board, the Impact Central Support Team and the National Awareness Partners.

## ECHO

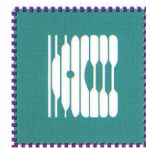


The ECHO home page gives the user access to background information on ECHO and its services, as well as facilities for accessing these services. Detailed information is available on each of the ECHO databases including descriptions of database contents, record structure and examples of search strategies. Users may access ECHO via a telnet session.

Access is also available, via a gateway, to EUROCAUTOM, the multilingual on-line dictionary of the EC Translation Services.

The service includes the possibility to download a program to enable users to learn the Common Command Language (CCL), the query language which unlocks the full power of the ECHO databases (the complete user manual may be downloaded by the user onto his/her machine if required).

## CORDIS



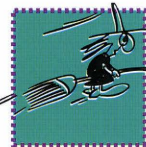
The CORDIS service on I'M-EUROPE offers a brief description of CORDIS and an indication of the contents of the nine CORDIS databases. Users can also obtain details on the Value Relay Service. Detailed information on Value Relay Centres will be added in the near future.

## Directorate General XIII



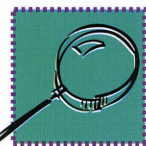
The DG XIII home page contains a brief description of the tasks and functions of DG XIII. Users can also access contact information for the various directorates of DG XIII. A contact person is identified for each directorate along with the relevant telephone number.

## I'M-EUROPE mailbox



The I'M-EUROPE mailbox has been developed in order to gather as much feedback as possible from the user communities. All queries and comments are welcome and will be taken into consideration as changes and enhancements are implemented. The I'M-EUROPE team replies to all requests for information and advice on a daily basis.

## I'M Index



The I'M index service is an ICE based search and retrieval engine used to search the contents of I'M-EUROPE for particular themes and subjects. Users can either enter searches using Boolean operators or may enter individual search terms. The system displays the sections of I'M-EUROPE that match the search. The user then clicks on the name of the section that interests him/her in order to move to that service.

The user is also able to access, from the home page, related resources available on the World Wide Web.

## Use of I'M-EUROPE: Some figures

I'M-EUROPE is already proving very popular with Internet users. During its first two months of operation, the main home page was accessed 12960 times. Of the individual services available the European Documents page was the most popular (2590 accesses), followed by the European Programmes related to the EI market (2400 accesses). The ECHO home page was requested 2311 times, and the CORDIS home page was requested 2656 times. After two months of operation 372 electronic messages have been received from users. Feedback of this type will play a vital role in the shaping of the service in the future.

## How can I access I'M-EUROPE?

Users who have access to Internet and a WWW browser may access I'M-EUROPE by opening the following URL:

<http://www.echo.lu/>

Users who have access to Internet but do not have a WWW browser may access I'M-EUROPE through a TELNET access to publicly available line-mode browsers. You can TELNET to our Lynx line-mode browser via the following:

address: WWW.ECHO.LU  
login: WWW

Another option for obtaining WWW documents is to request, via e-mail, one or more pages of information from I'M-EUROPE (or any other server) provided that the complete URL – Uniform Resource Locator – is known. This can be done by sending an e-mail message (with no subject line) to [listserv@info.cern.ch](mailto:listserv@info.cern.ch) with the following text line (this is an example for I'M-EUROPE's home page):

SEND <http://www.echo.lu/home.html>

## How can I obtain my WWW browser?

Public domain software for accessing the World Wide Web (and, therefore, I'M-EUROPE) can be obtained by anonymous FTP (i.e. you are able to login as a guest to an FTP site in order to transfer files). The anonymous FTP process is the following:

- (1) connect to an FTP site with the FTP command (e.g. [ftp ftp.ncsa.uiuc.edu](ftp://ftp.ncsa.uiuc.edu))



- (2) type the word "anonymous" as login
- (3) type your complete e-mail address as the password.

Once logged in, you can navigate through the different directories with the CD command, and transfer files to your machine using the GET command.

### Browsers for Windows

*NCSA Mosaic for Windows*

**Address:** ftp.ncsa.uiuc.edu

**File:**  
Web/Mosaic/Windows/wmos20a7.zip

*WinWeb*

**Address:**

ftp.einet.net

**File:**

inet/pc/winweb/winweb.zip

### Browsers for Macintosh

*NCSA Mosaic for Mac*

**Address:**

ftp.ncsa.uiuc.edu

**File:**

Web/Mosaic/Mac/NCSAMosaicMac.103.sit.hqx

*MacWeb*

**Address:**

ftp.einet.net

**File:**

inet/mac/macweb/macweb.latest.sea.hqx

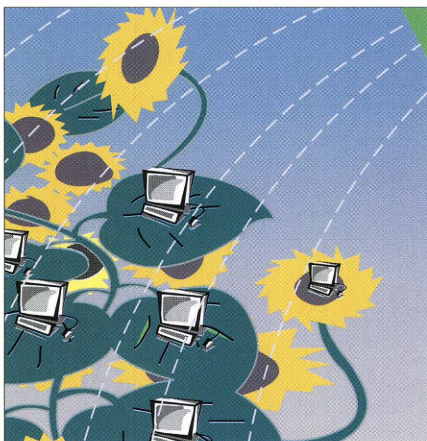
### How can I obtain access to Internet?

If you are studying or working in a University and wish to access Internet check with your technical support or related department in order to see if an account can be provided. If not, please contact the ECHO help desk.

We hope that this information is of assistance to you. If you have any questions, please do not hesitate to contact ECHO or to address your enquiries to:

webmaster@echo.lu

## Expansion of the National Awareness Partners Network



In issue 3/94 of ECHO Facts for Users, we provided you with information on three new members of the National Awareness Partners (NAPs) network. We are now pleased to provide details on new NAPs situated in Austria and Germany:

### Austria

The Austrian Economic Chamber is a public corporation. TECHINFORM (founded in 1980) is a sub-department of the Austrian Economic Chamber and employs six staff. The department acts as a consulting and information pool for Austrian enterprises (industry, business and trade), universities and institutions. Five additional branch offices are situated throughout Austria, meaning that regional areas of the country are also provided with the services on offer.

Supplying knowledge to customers allows for efficient product development, successful marketing and supports export activities. The central task of TECHINFORM is the promotion of business and it is for this reason that non-profit information services are offered. TECHINFORM accesses a staggering 1500 databases in order to carry out research studies in the fields of technology, business and science information, etc. on behalf of its clients. TECHINFORM offers this type of information service throughout Austria.

Its main tasks are:

- consultation and provision of information regarding the latest developments in both technology and economy (research);

- organisation of consultation meetings, workshops, seminars as well as participation in exhibitions and conferences;
- organisation of cooperation and utilisation of cooperation databases;
- consultation regarding the installation of electronic in-house databases and connection to external databases;
- promotion of innovation and support of technology transfer.

### Integration in networks and programmes

TECHINFORM uses the telecommunications services offered by Radio Austria (Datex-P), General Electric, Internet and Sprintnet. Its projects extend from national to European programmes of the Ministry of Economics, the Patent Office, the Bureau for International Technology Transfer (BIT), the Association of Austrian Librarians (VÖB) and the Austrian Community for Documentation and Information (OGDI). The organisation also subscribes to the technology network of the EUREGIO Lake Constance.

For further information on TECHINFORM and its activities as a National Awareness Partner please contact:

### TECHINFORM

Wirtschaftskammer Österreich  
Aussenwirtschaft  
Wiedner Hauptstrasse 63  
Postfach 150  
A-1045 Wien

Tel.: +43-1-501-05-4523 or 4566  
Fax: +43-1-502-06-277.

Contact: Egon Kratochvil/Johann Kafka

### Germany

Deutsche Gesellschaft für Dokumentation e.V. (DGD) is a non-profit making association of information and documentation professionals and currently has some 2000 members. Its basic mission is to support information and science practice. To this end DGD:

- offers a forum for communication between the following different groups:
  - suppliers, users, scientists and practitioners;
- promotes the image of the profession and public awareness in



the area of electronic information services;

- comments on official information and legal barriers;
- reduces information barriers, creates transparency in the information markets;
- mediates between the different professions and offers education/training courses for information professionals.

DGD organises conferences (National On-line meetings, annual conferences and "Deutscher Dokumentartag") as well as specialised conferences concerning specific areas of information and documentation. The association also initiates and supports continuous education and training in the form of workshops as well as providing instruction and training for documentation assistants. It cooperates on a national and international basis with other associations such as AKDok and EIA. It also publishes journals, books and newsletters.

DGD has working groups in 15 different regions all over Germany which offer various activities for information professionals and students, as well as a network of 15 professional committees and two user groups (on-line and CD-ROM) who observe recent developments in information science and practice. A special user group for information brokers was recently formed.

The association maintains permanent contacts with the professional German library and archive associations as well as with societies, associations, institutes and study groups which deal with computer science/informatics, information technology, document management, technical documentation and standards.

For further information on DGD and its activities as a National Awareness Partner please contact:

Deutsche Gesellschaft für Dokumentation e.V. (DGD)  
Ostbahnhofstrasse, 13  
D-60314 Frankfurt/Main

Tel.: +49-69-430313  
Fax: +49-69-4909096.

Contact: Dr Sabine Graumann / Mr Hans Nerlich

More introductions will be made in the forthcoming issue of ECHO Facts for Users (1/95).

# Important TED news!

## TED via gateways

In line with EUR-OP's (Office for Official Publications of the EU) distribution policy and the principle of subsidiarity, a Call for Candidatures was published in the Official Journal and consequently in the TED database on 24 December 1993. The Call announced EUR-OP's intentions to create a network of distributors (gateways) for the commercial databases of the Institutions of the European Communities. Following the Call, many national agents have now been selected. The aim of the distribution policy is to have gateway operators in all Member and EEA States and eventually in other countries where usage of EUR-OP's databases is high.

The TED database (and its printed counterpart) is produced by the EUR-OP, and it is just one of the chargeable databases which will be distributed nationally by agents. The benefits of this distribution policy can only please the end-user, since telecommunication costs may be slightly lower than before. The "switch-over" of ECHO clients to distributors is scheduled to take place during 1995 and all clients will be contacted individually in order to ensure that the transfer is as smooth as possible.

It is hoped that gateways will be opened in more countries. TED users situated in those countries in which a gateway is not yet operational will remain under ECHO until a suitable gateway is found.

The current list of official gateways is featured below. Please note that this list is correct at the time of going to press.



### Austria

EDV-Elektronische Datenverarbeitung Gesellschaft  
Hofmühlgasse 3-5  
A-1060 Wien

Tel.: +43-1-599-07-175  
Fax: +43-1-599-07-250

### Finland

VTKK Information Service Ltd.,  
Espoonatori B  
SF-02770 Espoo

Tel.: +358-0-457-23-32  
Fax: +358-0-457-37-56

### Iceland

SKÝRR  
Háaleitisbraut, 9  
IS-108 Reykjavík

Tel: +354-1-695-100  
Fax: +354-1-695-251

### Ireland

Intergate  
71 Talbot Street  
Dublin 1

Tel.: +353-1-836-49-03  
Fax: +353-1-855-15-09

### Italy

CERVED SpA  
Via Staderini, 93  
I-00155 Rome



Tel: +39-6-255-911  
Fax: +39-6-255-91309

### Norway

Vestlandsforskning  
Fossetunet 3  
N-5800 Sogndal

Tel.: +45-57-67-60-00  
Fax: +45-57-67-61-90

### Portugal

Telepac  
Rua Dr. António Loureiro Borges 1  
Arquiparque - Miraflores  
P-1495 Lisboa

Tel.: +351-1-790-70-00  
Fax: +351-1-790-70-01

### Spain

SPRITEL  
Parque Tecnológico, Edificio 103  
E-48016 Zamudio (Vizcaya)

Tel.: +34-4-420-94-70  
Fax: +34-4-420-94-65

### Switzerland

Schweizerische Zentrale für  
Handelsförderung  
(OSEC)  
Stampfenbachstrasse 85  
CH-8035 Zürich

Tel.: +41-1-365-54-54  
Fax: +41-1-365-54-11

### United Kingdom

Context Ltd.,  
Grand Union House  
20 Kentish Town Road  
London NW1 9NR

Tel.: +44-71-267-89-89  
Fax: +44-71-267-11-33

## Important announcement for TED's UK users!

Context Ltd., the UK gateway for EUR-OP's databases, would like to interview TED users to ensure that they will provide the services you require when their operation of the TED database commences. Transfer of TED's UK clients to Context Ltd. is



currently scheduled to take place during 1995. However, ECHO will inform all its UK clients as to the exact date of transfer well in advance.

If you would like to talk with a representative from Context Ltd. regarding your requirements, please contact:

Feona Hamilton

Context Ltd.,  
Grand Union House,  
20 Kentish Town Road  
London NW1 9NR

Tel.: 071-267-89-89  
Fax: 071-267-11-33.

## Community Procurement Vocabulary (CPV)

The long-awaited CPV codes are soon to arrive! Developed by DG XV/B-4 of the European Commission, the codes will enable users to immediately select a document of interest and thus refine their search strategy.

The new codes are far more detailed than the existing NACE codes. For each NACE code already featured in the database there are at least 20 corresponding CPV codes. This average increases in the services sector, where one NACE code can have the equivalent of up to 200 CPV codes!

The NACE codes (found in the CT and CC fields) will remain in the database for three months after the implementation of the new coding system. This will ensure that users are able to familiarise themselves with the CPV codes before the NACE codes are withdrawn.

Two new fields will be created to accommodate the CPV codes. The PC (Product Code) field will contain the code number (e.g. 74831300) and also the corresponding code name whilst the PN (Product Name) will contain the code name (e.g. translation services) and the corresponding code number.

The CPV codes will appear in the database at the beginning of 1995. TED users will be notified by separate mail as to the exact dates of implementation. In addition, users are advised to consult the on-line information file: INFO TDCODES which is continually updated.

## Changes in the structure of the Supplement to the Official Journal (OJS)

There has been a considerable increase in the number of notices published in the Supplement to the Official Journal (OJS), with all the signs being that this trend will continue in the future.



In order to guarantee the publication dates applicable to these notices, without compromising production costs, the Commission and the Office for Official Publications have been forced to restructure the Supplement and review the existing translation practices.

The new structure is as follows:

- Documents issued by the European Institutions are now translated in their entirety;
- Documents issued from the Member States are published in their original language. A summary of the most important points of the documents is now provided in all official languages (please note that this summary is now shorter than the one formerly provided);
- Documents issued from those countries situated outside the Member States are published in the English language;
- Contract awards are published in all languages.

The new structure of the Supplement S came into force on 18 October 1994. However, the TED database will not follow the new structure of its printed counterpart until the CPV (Common Procurement Vocabulary) codes have been implemented (please see this page for further details). Users will be informed of any alterations to the structure of TED well in advance via the usual channels. In addition, the on-line information file: INFO TDNEWS will keep users informed of the changes as and when they occur.



## Cut and paste!

### Improvements in the SHOW format

The output (SHOW) command has been changed so that reading and processing the documents contained in TED will be clearer for the user. The following improvements will be made:

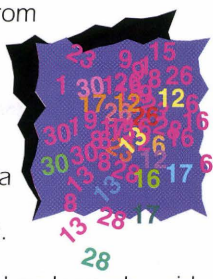
- Every field will appear on a separate line. This affects the DT, PD, PG and OJ fields.
- The fields have been slightly regrouped in a more logical order. The order of appearance is now the following:
  - Title
  - Bibliographic references
  - Dates
  - Legal codes
  - Product codes
  - Regional and language codes
  - Text
  - The FN field has been withdrawn, since it is redundant within the RN field and is therefore not required;

- The DD field is now included in the SHORT and STANDARD format. This means that users are able to check whether tender specifications may still be requested before looking at the full format of the document.

The new structure of the database fields can be seen on page 7.

## TED Updates

TED is produced from Monday to Friday and is published from Tuesday to Saturday. The updated data are usually available via ECHO from midnight onwards.



TED is not updated on Luxembourgish or EC holidays therefore no updates will take place on:

- |           |           |
|-----------|-----------|
| 1 January | Easter    |
| 1 May     | 9 May     |
| Ascension | Pentecost |

- |               |                           |
|---------------|---------------------------|
| Whit Monday   | 23 June                   |
| 15 August     | 1 November                |
| Christmas Day | Boxing Day (26 December). |

If a public holiday falls on a Monday (such as Easter Monday or Whit Monday) no update will take place on the Tuesday which follows.

### For your 1995 diary!

During 1995, the TED database will be updated as usual every Tuesday and Saturday.

The following dates are the expectation to the rule:

- 1 January 1995
- 18 April 1995
- 2 May 1995
- 25 May 1995
- 6 June 1995
- 23 June 1995
- 15 August 1995
- 1 November 1995
- 26 December 1995
- 27 December 1995.

Note: TED will not be updated on 27 December 1994.

## NEW STRUCTURE FOR THE TED DATABASE AS OF NOVEMBER 1994

FIELD NAME	ACRONYM	COMMANDS,FT	OUTPUT FORMAT:	EXAMPLES
Title of the document	TI	- - S FT	SHORT STD ALL	F PACAK\$/TI
Publication date	PD	D F S	SHORT STD ALL	F PD=940311
Number of document	ND	D F S	SHORT STD ALL	F ND=12345-94
Journal number	OJ	D F S	SHORT STD ALL	D OJ=\$
Page number	PG	D F S	SHORT STD ALL	F PG=44
Doc. received by EUR-OP	DR	- - S	ALL	S F=DS
Deadline for specifications	DD	D F S	SHORT STD ALL	F DD>941212
Deletion date	DT	D F S	SHORT STD ALL	F DT>930715
Type of document	TD	D F S	SHORT STD ALL	F TD=(1 OR 2)
Nature of contract	NC	D F S	SHORT STD ALL	F NC=4
Type of procedure	PR	D F S	STD ALL	F PR=1
Regulation of procurement	RP	D F S	STD ALL	D RP=\$
Awarding authority	AA	D F S	STD ALL	F AA=5
Type of bid required	TY	D F S	STD ALL	D TY=\$
Awarding criteria	AC	D F S	STD ALL	F AC=1
Referenced NDs	RN	D F S	ALL	S F=RN
Code for contract object	CC	D F S	STD ALL	F CC=33\$
Term for contract object	CT	D F S FT	(-) (-)	F CT=\$CORK\$
* CPV product code	PC	D F S	STD ALL	F PC=2330\$
* CPV product name	PN	D F S	(-) (-)	F PN=\$WOOD\$
Name of awarding authority	AU	D F S FT	SHORT STD ALL	F CY=FR
Original language	OL	D F S	SHORT STD ALL	D OL=\$
Successful bidder	CO	D F S	ALL	D CO=IBM
Abstract of tender	AB	- - - FT	SHORT STD (-)	F WOOD\$
Text	TX	- - -	ALL	S F=TX
Original language text	OL	- - S	ALL	S F=OT

\* To be implemented at a later date





CORDIS

**Watch-CORDIS –  
a user friendly  
front-end to the  
CCL**

■ **So you want to search a CORDIS database? ■**

Imagine formulating your search off-line in Windows by pointing and clicking your mouse. Then, when you are ready and you initiate your search, your PC automatically logs on to ECHO, selects the database, searches it, and downloads your data in the format that you specified. All this happens in one of those timeless moments while you sit back in your chair, watching specks of dust floating in the sunlight shafting in through the window: life is sweet and simple. Then you find your coffee is cold. Searching CORDIS is as easy as this. But to experience it you need Watch (Windows Access to Central Host) - CORDIS.

Watch-CORDIS is a new CORDIS software application that enables you to search CORDIS databases on the ECHO host, using a Windows front-end.

■ **Installation ■**

Considering how many people get out of their technological comfort zones when they get involved in computer communications, Watch-CORDIS is delightfully simple to install and to run. During installation it asks you a few questions and it uses the answers to create a logon macro. The questions are simple. For individual voice line users, for example, are you using a modem, what is your ECHO User Code, and from which country are you dialling?

After installation you can view the connection macro to check that it is correct, and, if necessary, you can modify it.

■ **Accessing ECHO ■**

If there is a catch with this application it is that before you can use it you need to access ECHO manually and use the DEFINE command to reset the ECHO - START command so that when you next logon you are placed directly into CCL mode, without having to wade through all the preliminary menus. To do this, logon to ECHO, enter CCL mode and type:

**DEFINE START**

and press Enter. ECHO responds by displaying the current START command, for example CALL ECHO, or CALL CORDIS. Type a blank space and press ENTER. This deletes the START command so that next time you logon you are placed directly into the CCL.

Having done this you can now use the automatic logon macro in Watch-CORDIS. If you have Watch-CORDIS but no other means of accessing ECHO you can use either the Windows Terminal, or the Watch-CORDIS Terminal Emulator to access ECHO manually and reset the START command.

■ **Reduce Data Connection Charges ■**

By using Watch-CORDIS to formulate searches off-line, telephone and data connection charges should be reduced for most users, simply because you will be spending less time on-line. However, it might be interesting to check the charging structure of your particular telephone company or PSDN operator and to consider the nature of your searches, and the quantity of data transmitted and received. PSDN charges are sometimes deviously contrived, for example a carriage return may be charged as a whole line of data. Telephone call charges may be based on an initial period at a set charge so that repeatedly logging on for a brief time and logging off again may actually cost more than remaining on-line to complete a series of short searches.

■ **Automatic Updates ■**

Many fields in CORDIS databases use codes, or are catalogue fields. These codes and catalogues are included with the Watch-CORDIS software in the form of indexes. Thus, searches can be formulated off-line using these codes and catalogue entries. When these codes and catalogues are updated they can be downloaded to automatically update the indexes on your own Watch-CORDIS installation.

■ **Query Forms ■**

The query form is the Window from which you formulate and initiate the search. The query used by Watch-CORDIS can be changed and the new query forms saved under a different name for future use. You can thus have a selection of query forms available for different purposes.

I am interested in receiving information on

CORDIS ON-LINE DATABASES

CORDIS DATABASES ON CD-ROM

Name .....

Organisation/Company .....

Address .....

City .....

Country .....

Are you an ECHO user? If so, please provide your User Reg. No. 000

ECHO/CORDIS Customer Service, B.P. 2373, L-1023 Luxembourg.  
CORDIS-L fax (+352) 34 98 1248



CORDIS



### ■ Data Returned by a Search ■

Data returned by a search can be tailored to your own requirements. You can specify which fields are displayed and you can change the order in which they are displayed. This can be done either by creating a new layout, or by editing one of the existing layouts. New layouts can be saved under a name of your own choice for future use, providing a selection of layouts for different purposes.

Data can also be printed, or saved to disk, and you can select either a range of records or selected records.

### ■ Global Searches ■

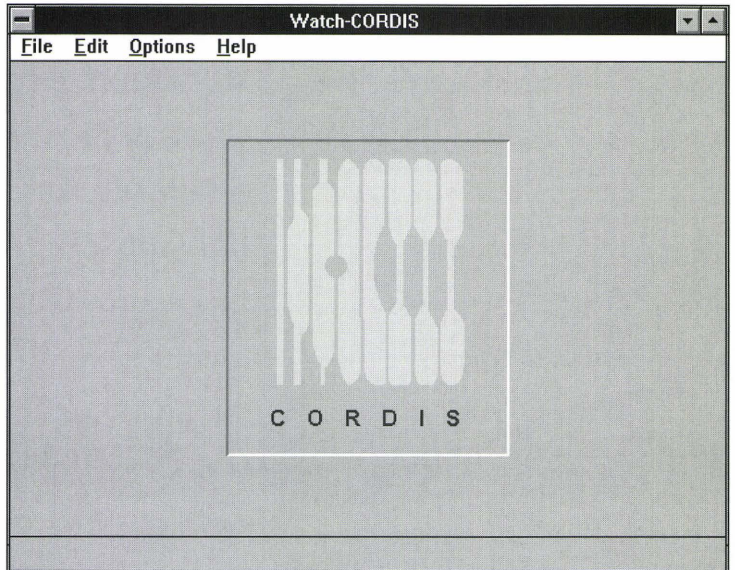
Like the CD-ROM for DOS software, Watch-CORDIS incorporates a global search facility. This enables all the CORDIS databases on the ECHO host to be interrogated with a single search query. When Watch-CORDIS searches the databases on the ECHO host it is using the CCL. With this in mind we might borrow a concept from IBM, Watch-CORDIS is a better CCL than the CCL. Yes, it's absolutely true, Watch-CORDIS not only makes life easier and cheaper, but it enables you to do more things than you could do before. Given the problems associated with international computer communications, the complexity of the Microsoft Windows environment, and the difficulties of interfacing with the CORDIS databases, Watch-CORDIS works remarkably well.

And it's free!

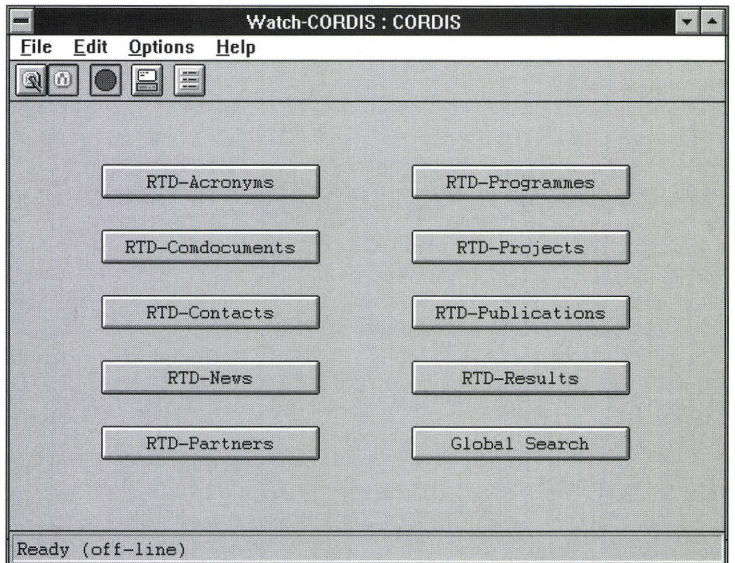
### ■ Hardware Requirements ■

To use Watch-CORDIS you will require a personal computer capable of running Microsoft Windows version 3.1 or higher. You will also require some means of communicating with ECHO, either a modem via the telephone voice lines or packet switching service, or some other form of connection. Watch-CORDIS also requires about 4 Mbytes of free space on your hard disk. It will work with 4 Mbytes of RAM but is likely to be slow and problems may occur with complex searches or if you are handling large quantities of data. To be safe, 8 Mbytes of RAM is recommended.

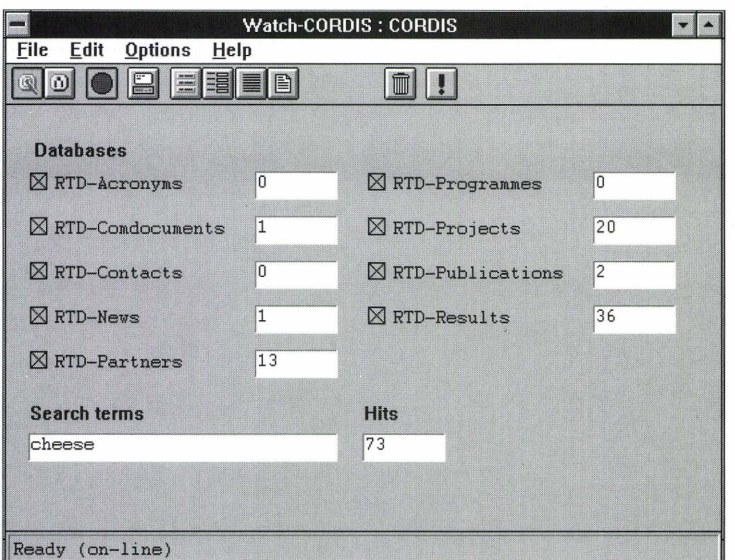
The Watch-CORDIS Introduction Screen



The Watch-CORDIS Database Selection Screen showing the Global Search Option



The results of a Global Search





## ■ Obtaining Watch-CORDIS ■

Watch-CORDIS is available on 3.5 inch 1.4 Mbyte floppy disks. For a copy of Watch-CORDIS, and for any other information about access to CORDIS, please contact the CORDIS help desk. Although Watch-CORDIS is available free-of-charge it is copyright.

## ■ News Item ■

### High Speed Data Transfer

Early versions of Windows 3.1 (Windows for Workgroups) had bugs affecting communications. One of these was a strange problem whereby you could only get the PC to talk to your modem at 19200 baud. This was an educational little bug because it demonstrated that you can actually access ECHO at 19200 baud and search and download data, and it all works.

The modems on ECHO voice lines automatically adjust themselves to the speed of the incoming signal, and they will operate at 19200 baud. However, ECHO and CORDIS consider that such high speeds are technically unreliable and recommend a maximum of 9600 baud. You are, after all, using a pair of telephone wires for purposes for which they were never intended. There is also a perceived potential problem in downloading data at such high speeds. Nevertheless the system does appear to work at these speeds without problems.

Watch-CORDIS allows you to set your communications to 19200 baud. If you do use this setting and you have problems try reducing the speed to 2400 or even 1200 baud. If this cures the problem you can try increasing the speed to 9600 baud.

Further information on all aspects of this article can be obtained from:

ECHO/CORDIS Customer Service  
B.P. 2373  
L-1023 Luxembourg

Fax: +352-34981-248

E-mail:  
CORDIS-HELPDESK @ DCFILX.DAS.NET

or

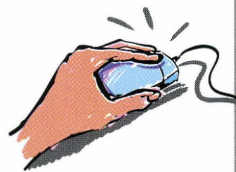
X400: C=DE; A=DBP; P=GEONET;  
S=CORDIS-HELPDESK

or

Internet: HELPDESK@CORDIS.LU

## Windows Access to Central Host now available for TED and I'M Guide!

Data available at  
the click of a  
mouse button



Both the TED and the I'M Guide databases are now available via a GUI-based interface known as Watch-ECHO. The software\* is fully compatible with MS-Windows reducing the new user's learning curve. Both interfaces are intuitively easy to use and will appeal to users from a variety of backgrounds regardless of their level of experience with computers.

Watch-TED offers its users the possibility to search the various sections of the database (TED-Current, TED Archive and TED Demo) separately or to perform a global search across all the database.

Watch-I'M Guide allows its users to search three sections of the database (databases, database producers and information brokers) separately or to perform a global search of the whole database. Watch-I'M Guide includes a single user interface for the CD-ROM and the on-line database.

Searches are conducted in both applications by completing an on-screen form which includes all searchable fields, thus meaning that inexperienced users are able to obtain precise information without previously learning the CCL (Common Command Language), the database retrieval language used by ECHO.

The main features of both of the applications are:

- full MS-Windows compatibility, reducing the new user's learning curve;
- automatic handling of connection and disconnection procedures. Communication scripts are automatically recorded and activated;
- automatic query submission giving the user the possibility to submit one or several searches daily at the click of a mouse;
- a comprehensive range of searching functions: use of Boolean

and proximity operators, date and range searching, left-hand truncation and phrase searching;

- a large number of searchable fields;
- easily customised screen display and download formats.

The application will be presented at the International On-line and CD-ROM exhibition which is to be held in London on 6-8 December 1994.

To install and use the applications you need:

- an IBM AT or 100% compatible with at least a 80386-based processor;
- Microsoft Windows (version 3.1 or higher);
- 4Mb free RAM;
- 4 Mb of hard disk space;
- a modem, X.28 or PC/NFS, or Windows socket or Interrupt 14 h compatible LAN software (version 4.0 or higher) connection.

Further information can be obtained from ECHO.

\* The software was first developed for the CORDIS service.

## The INFO files

The INFO files were devised by ECHO a few years ago as an on-line help facility to be constantly monitored, updated and revised in order to suit user requirements. The INFO files are divided into the following sections:

- Information on the I'M-EUROPE WWW server
- Information on ECHO
- Information on on-line information
- Information on ECHO Databases
- Information on ECHO Services
- Information on the CCL
- Information on technical aspects
- Information on ISO codes
- A list of all available INFO files.

The English version of the files has recently undergone major content and language revision, but what we would really like to know is if the files are of assistance to you, and whether or not they meet your on-line requirements. Please leave your comments in the ECHO mailbox.



## Quality assurance in database production

Quality management, quality assurance and ISO 9000 are all "buzz-words" which frequently appear in the press these days, and almost every European company is considering introducing or has already introduced quality assurance in its production process.

Of course the electronic information industry, especially within the area of database production, is subject to such initiatives.

We would therefore like to announce that ECHO has decided to introduce quality assurance in the production of the I'M Guide database.

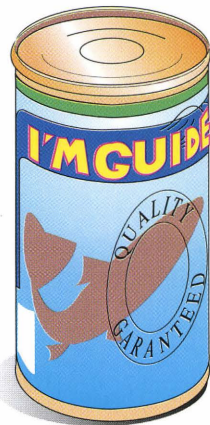
This initiative is a "pilot-project" within the framework of action line 3 (Increasing user-friendliness and improving information literacy) of the IMPACT 2 programme and it has been decided to use ECHO and I'M Guide as a test-bed for quality assurance in database production.

Initial steps towards this were taken more than six months ago, when a "Cook-book" for the production of the database was drawn up for internal use. The "Cook-book" defines, in great detail, each step undertaken in the production process of the database, and provides information on who is responsible for specific tasks and which tools are used. So far, the "Cook-book" has been an extremely valuable instrument for the ECHO staff working with I'M Guide and it has substantially contributed to a much more "streamlined" production process of the database.

This "Cook-book" will now form the basis of a further study, in which a professional quality assurance consultant will critically examine its contents. The results of the project will be made available to other database hosts and producers on request.

Once again, the European Commission and ECHO, through this project, demonstrate their role as stimulators within the electronic information market. This follows their traditional pattern of initiating projects

which are of benefit to the entire information industry, using ECHO as an experimental service and making the results freely available.



In addition to this project, ECHO and its partner for the data input collection, the European Information Industry Association (EIIA) have, over the last four months, initiated new mechanisms in order to improve the quality of I'M Guide. As a result of these efforts some changes will be introduced to the database in the future, particularly concerning CD-ROMs, CD-Is and other "portable" databases.

In brief, the main changes will be that I'M Guide will contain three different types of organisation records:

- information producers
- information brokers
- information distributors, and within this group the following sub-groups:
  - On-line hosts
  - Gateways
  - CD-ROM and CD-I distributors
  - Diskette distributors
  - Distributors of databases on other media.

These changes bring "portable" databases in line with on-line databases, since, basically, a distributor of "portable" databases is similar to a host from the user's point of view, as it is this organisation which needs to be contacted in order to obtain access to the database.

For users of I'M Guide this change means that the organisation regarded as a "distributor" is a contact point for "obtaining access to" the database, independently of whether it is an on-line or "portable" database.

This will, as we see it, make the database more user-friendly. However, we should mention that it will be impos-

sible to include every single CD-ROM/CD-I distributor available in Europe in I'M Guide.

As you are probably well aware, these days CD-ROMs are enjoying a much wider distribution network – even book shops distribute CD-ROMs! It is virtually impossible to represent all these millions of European book-shops in I'M Guide, and we have therefore decided on the following policy:

All specialised CD-ROM and diskette database distributors based in Europe.

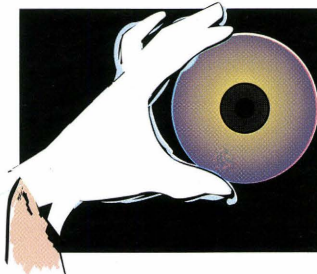
and

all organisations already listed in I'M Guide (because they are also database producers and/or hosts)

will be included within the database.

We believe that these "types of shops" can provide more valuable information than just any book shop which distributes a few CD-ROM titles.

## ECHO requires test users for its CD-ROM!



ECHO is pleased to announce that the I'M Guide CD-ROM, the first to be produced by ECHO, will be presented at the International On-line and CD-ROM exhibition in London (6-8 December 1994). The CD-ROM is available in all nine official languages of the European Union.

A Windows Interface, (Watch – Windows Access to Central Host – ECHO) based on that developed for the CORDIS databases (see page 10) will provide users with an interface to I'M Guide and Tenders Electronic Daily. However, the I'M Guide interface has been developed one step further. After the information required has been retrieved from the CD-ROM version of the database users are able to connect to the on-line version, via the same interface, in order to check the validity of the data retrieved during their CD-





ROM search. To ensure that the product is acceptable with all ECHO users, and to ensure that it is compatible with all possible telecommunication set-ups, ECHO is looking for users who are willing to test and comment on the new interface. If you are interested in testing this new application, please send us your address and a log-file detailing exactly how you access the ECHO databases. The first 250 users to respond will receive a test version of the CD-ROM and, after an initial test period, will be required to send their comments to ECHO. Users attending the International On-line and CD-ROM exhibition are welcome to leave their business cards and log-files with the ECHO representatives who will be

present on the "European Union" Stand.

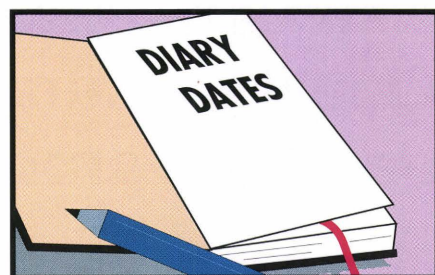
However, if you prefer to send this information by mail please address the package to:

ECHO  
B.P. 2373  
L-1023 Luxembourg.

¡ Ahora también puede llamarnos gratuitamente desde España !

Help desk de ECHO: 900 99 3521

Oficina Central de IMPACT 900 99 3522.



ECHO will be represented at the following events:

London IOLIM '94  
06-08/12/94

Cannes MILIA exhibition & conference  
13-16/01/95

## N A P a c t i v i t i e s !

The list is accurate at the time of going to press and covers the period from January 1995 to March 1995. The workshops and seminars organised by the NAPs provide an introduction to ECHO and the IMPACT programme. Please contact your NAP for further details.

The following workshops have been planned:

### Greece

National Documentation Centre (NDC)

Date: 02-01-95  
Place: Athens

Date: 07-01-95  
Place: Athens

### France

AF2i - Association Française des Intermédiaires en Information

Date: 15-01-95  
Place: Paris

Date: 15-01-95  
Place: Lyon

### Spain

CSIC/ Consejo Superior de Investigaciones Científicas

Date: 10-01-95  
Place: Madrid

### Sweden

IDC Information and Documentation Centre

Date: 02-01-95  
Place: Stockholm

The following seminars have been planned:

### Belgium

CNDST/NCWTD

Date: 19-01-95  
Place: Brussels

### Denmark

INFOSCAN

Date: 03-03-95  
Place: Roskilde

### France

Date: 15-01-95  
Place: Lyon

### Greece

National Documentation Centre (NDC)

Date: 02-01-95  
Place: Athens

Date: 07/11-01-95  
Place: Athens

Date: 07-01-95  
Place: Xnathi

### Iceland

SIFT - Icelandic Forum of IT&T Users

Date: 05-01-95  
Place: Reykjavik

Date: 07-01-95  
Place: Egilsstadir

### Ireland

Forbairt Technology Services

Date: 16-01-95  
Place: Dublin

Date: 17-01-95  
Place: Dublin

Date: 23-01-95  
Place: Dublin

Please contact your local NAP for further details.



ECHO Facts for Users is a Communication of the European Commission Host Organisation to its users.

A service provided by the Commission of the European Communities - DG XIII: Telecommunications, Information Market and Exploitation of Research.

Printed by: Merziger Druckerei Merzig, Germany

Editor: Jane Sanderson

The views expressed do not necessarily reflect those of the Commission.

Catalogue no. EUR-OP CD-AA-94-004-EN-C.

ECHO P.O. Box 2373  
L-1023 Luxembourg

# ECHO

